



SINGAPOREAN NOTICES TO MARINERS

SECTION	CONTENT	Page
I	Index of Charts & Publications	1
II	New Publications	6
	Notices to Mariners and Chart Corrections	7
	Temporary and Preliminary Notices	10
III	Navigational Information	12
	Amendments to Publications	13
IV	Reprint of Radio Navigational Warnings	15
V	Extract of Admiralty Notices to Mariners for Dual Badged Charts	16

The monthly Notices to Mariners contain corrective information affecting charts published by the Hydrographic Department, Maritime and Port Authority of Singapore. The information contained in these Notices should be updated on the charts affected. Notices under Section II apply only to the particular Singaporean Chart(s) indicated.

Mariners are requested to notify the Chief Hydrographer, Maritime and Port Authority of Singapore, immediately on the discovery of new dangers or suspected dangers to navigation and of changes or defects in aids to navigation. See Hydrographic Note on back page.

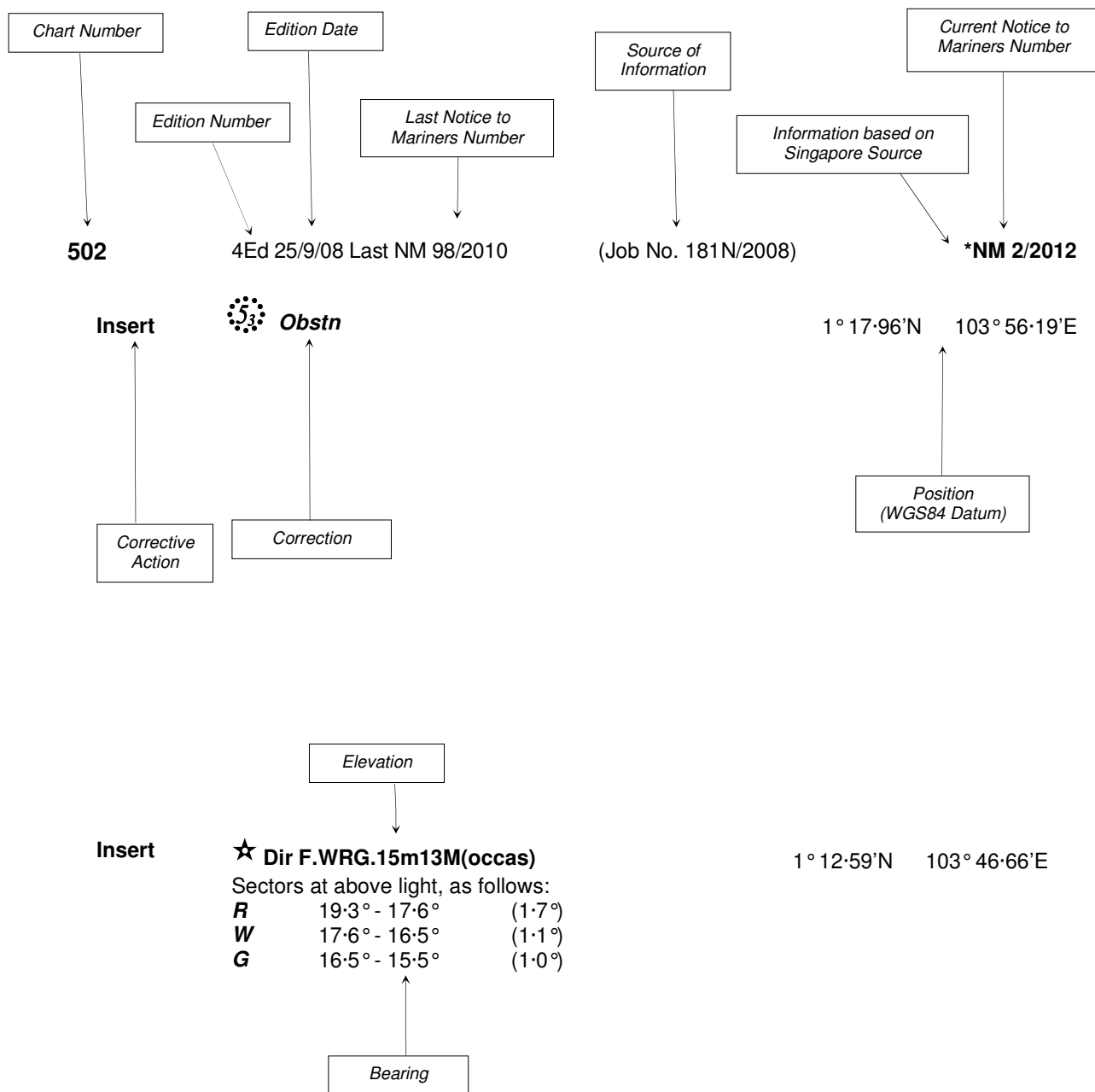
The monthly Singaporean Notices to Mariners can be accessed directly from the MPA website:
[http://www.mpa.gov.sg/sites/port_and_shipping/circulars_and_notices/singapore_notices_to_mariners\(ntm\).page](http://www.mpa.gov.sg/sites/port_and_shipping/circulars_and_notices/singapore_notices_to_mariners(ntm).page)

This service is offered free of charge.

Hydrographic Department
Maritime and Port Authority of Singapore
460 Alexandra Road
PSA Building #20-00
Singapore 119963
Tel: (65) 6375 1227
Fax: (65) 6278 7646

EXPLANATION OF FORMAT

The elements of a typical chart correction are explained below.



Notes:

- a) Notice to Mariners number followed by:
T indicates a Temporary Notice (eg. ***NM 3T/2012**).
P indicates a Preliminary Notice (eg. ***NM 4P/2012**).
- b) Bearings are true reckoned clockwise from 000° to 359°; those relating to lights are from seaward.
- c) Heights and elevations are above Mean High Water Springs.

I
INDEX OF CHARTS AND PUBLICATIONS

INDEX OF AFFECTED CHARTS

DESCRIPTION	NOTICE NO.	PAGE NO.
Index of Singaporean Charts	-	3
Index of Dual Badged Charts	-	4
Index of Singapore Electronic Navigational Chart (ENC)	-	5
Singaporean Chart GSP1, SP1	*21, *22	7
Singaporean Chart 200	23, 24, 25	7
Singaporean Chart 201	24	8
Singaporean Chart 501	*21	8
Singaporean Chart 502	*21, *22	8, 9
Temporary and Preliminary Notices	*26T	10, 11
Port Marine Notices	*27	12
Singaporean Print-On-Demand (POD) Charts	*28	12
Amendments to Publications	*29	13, 14
Reprint of Radio Navigational Warnings	-	15
Extract of Admiralty Notices to Mariners for Dual Badged Charts	-	16
Singapore Electronic Navigational Chart (ENC) Distributors	-	17
Chart Agents for the Maritime and Port Authority of Singapore Nautical Charts and Publications	-	17

*Denotes information are based on Singaporean source.

I
INDEX OF CHARTS AND PUBLICATIONS

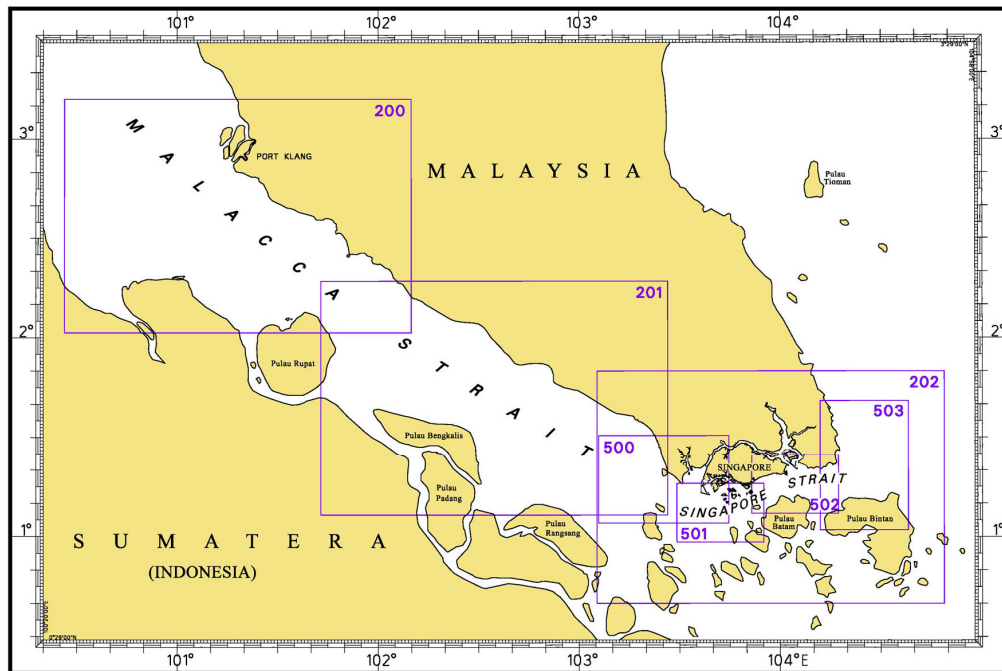
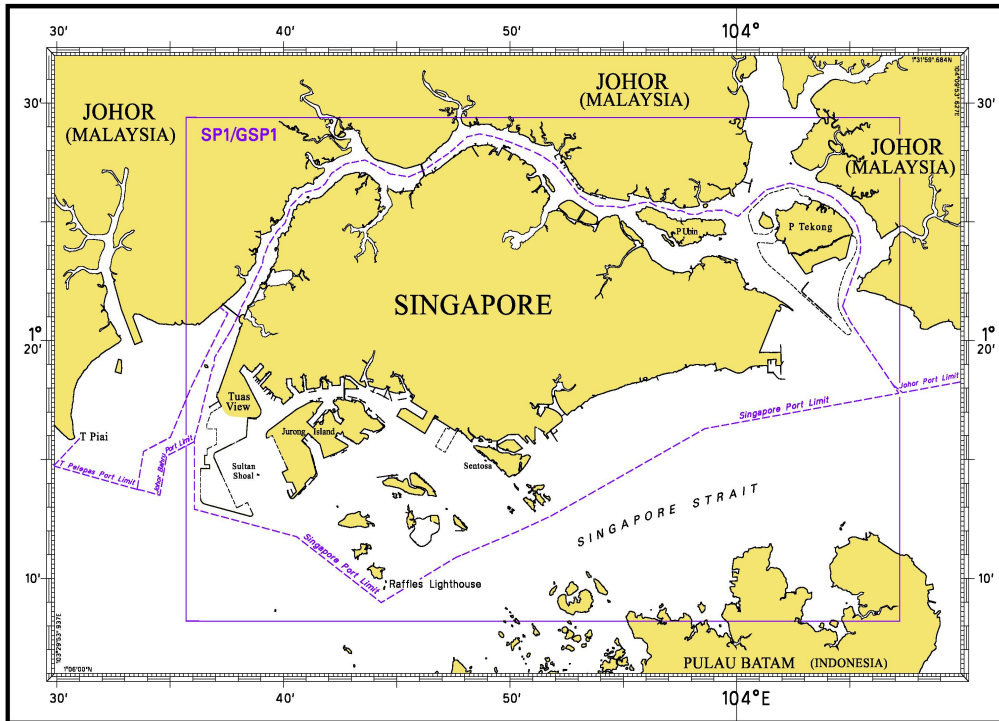
INDEX OF NOTICES

NOTICE NO.	DESCRIPTION	PAGE NO.
-	Index of Singaporean Charts	3
-	Index of Dual Badged Charts	4
-	Index of Singapore Electronic Navigational Chart (ENC)	5
*21, *22	Singaporean Chart GSP1, SP1	7
23, 24, 25	Singaporean Chart 200	7
24	Singaporean Chart 201	8
*21	Singaporean Chart 501	8
*21, *22	Singaporean Chart 502	8, 9
*26T	Temporary and Preliminary Notices	10, 11
*27	Port Marine Notices	12
*28	Singaporean Print-On-Demand (POD) Charts	12
*29	Amendments to Publications	13, 14
-	Reprint of Radio Navigational Warnings	15
-	Extract of Admiralty Notices to Mariners for Dual Badged Charts	16
-	Singapore Electronic Navigational Chart (ENC) Distributors	17
-	Chart Agents for the Maritime and Port Authority of Singapore Nautical Charts and Publications	17

* Denotes information are based on Singaporean source.

I INDEX OF CHARTS AND PUBLICATIONS

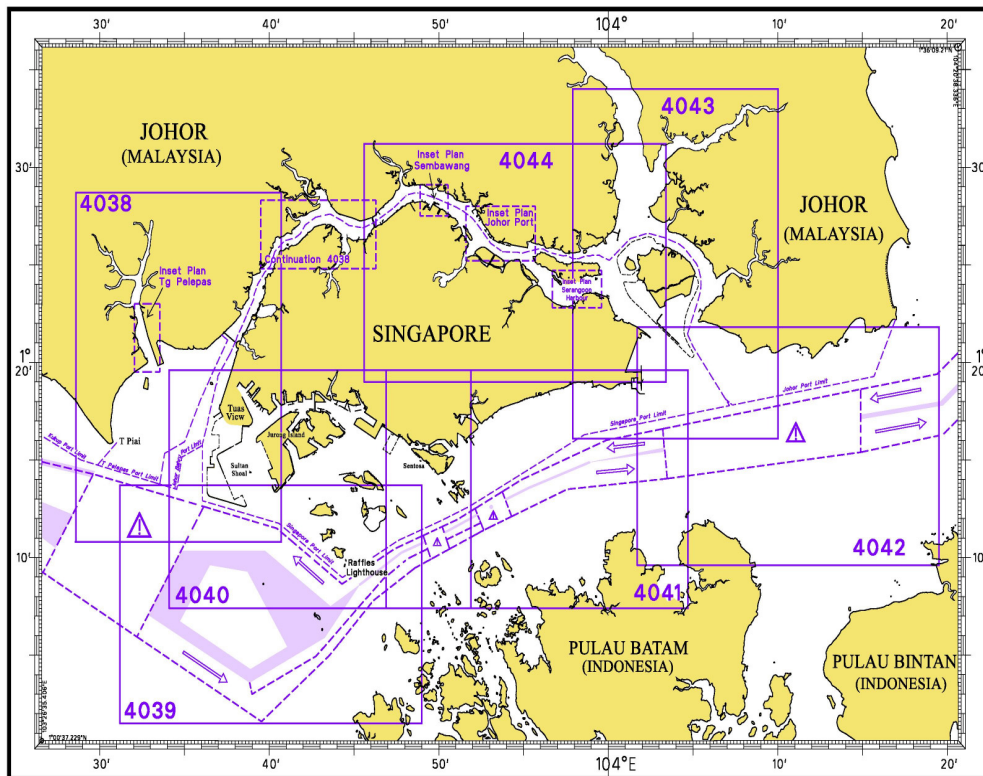
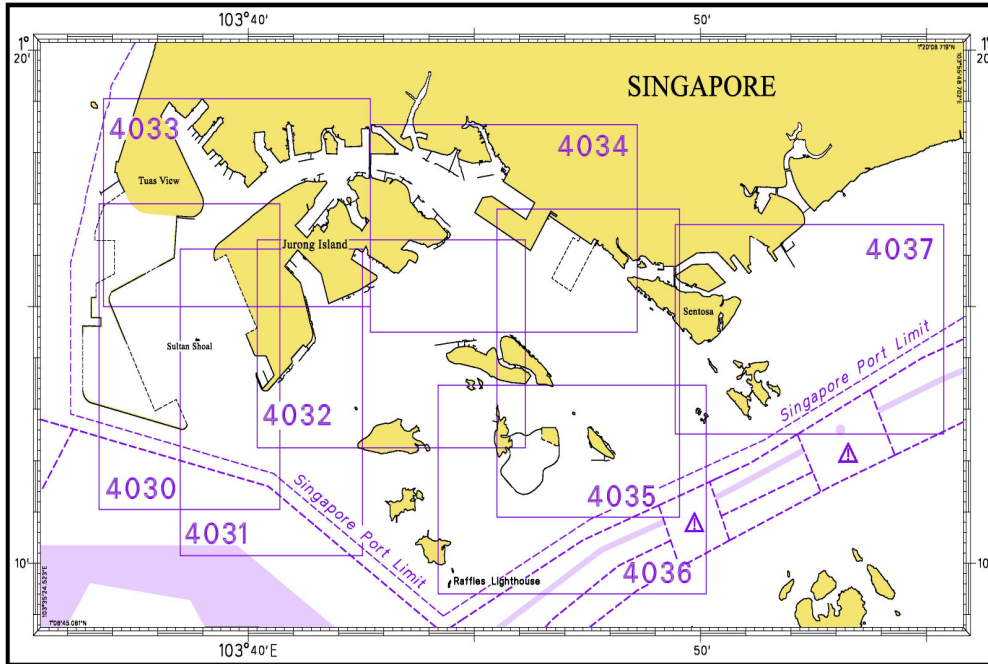
INDEX OF SINGAPOREAN CHARTS



Notes:
Updated SINGAPOREAN Charts are available through our Print-On-Demand (POD) Chart Service. For more information, refer to Section III – Navigational Information. These charts can be purchased from our authorised Chart Agents.

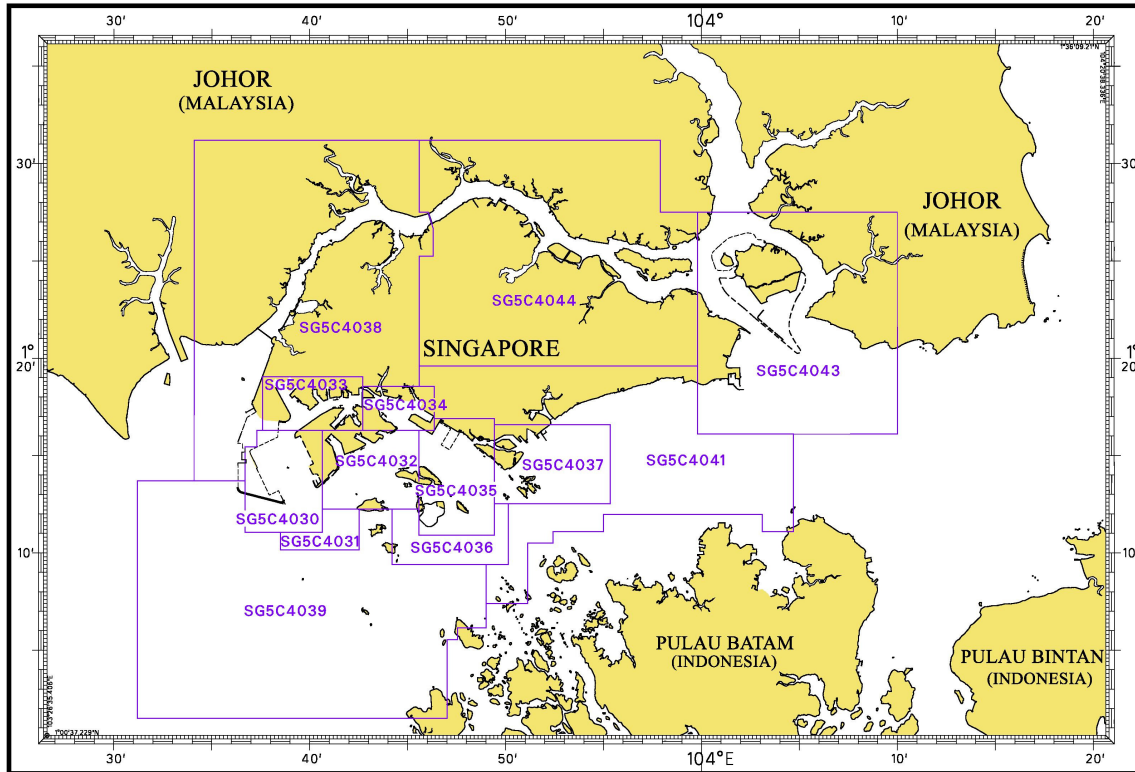
I
INDEX OF CHARTS AND PUBLICATIONS

INDEX OF DUAL BADGED CHARTS



I INDEX OF CHARTS AND PUBLICATIONS

INDEX OF SINGAPORE ELECTRONIC NAVIGATIONAL CHART (ENC)






COVERAGE OF SINGAPORE ELECTRONIC NAVIGATIONAL CHART (ENC)

ENC Name	ENC Coverage	ENC Edition
SG5C4030	West Jurong Anchorages and Temasek Fairway	4 th Edition (28/10/2010)
SG5C4031	Western Approaches to Jurong Island	4 th Edition (28/10/2010)
SG5C4032	Sinki Fairway	6 th Edition (27/04/2011)
SG5C4033	Tuas Bay, West Jurong Channel and Pesek Basin	4 th Edition (28/10/2010)
SG5C4034	East Jurong Channel, Pasir Panjang Terminal and West Keppel Fairway	9 th Edition (29/09/2011)
SG5C4035	Western Anchorages, Jong Fairway and Cruise Bay	10 th Edition (29/09/2011)
SG5C4036	Raffles Lighthouse to The Sisters	5 th Edition (27/04/2011)
SG5C4037	Keppel Harbour, Tanjong Pagar Terminal and Approaches	5 th Edition (31/05/2011)
SG5C4038	Johor Strait – Western Part	4 th Edition (28/10/2010)
SG5C4039	Western Approaches to Main Strait	4 th Edition (11/08/2011)
SG5C4041	Pulau Sebarok to Changi	5 th Edition (11/08/2011)
SG5C4043	Kuala Johor and Sungai Johor	6 th Edition (28/07/2011)
SG5C4044	Johor Strait – Eastern Part	6 th Edition (28/07/2011)


**II
NEW PUBLICATIONS**

Nil

II
NOTICES TO MARINERS AND CHART CORRECTIONS

GSP1, SP1	6 Ed 27/1/11 Last NM 9/2012	(HD/HY/AB0301911)	*NM 21/2012
Insert	limit of anchorage joining:	1°15·41'N 103°51·73'E 1°15·76'N 103°52·21'E 1°16·03'N 103°52·02'E	
Delete	limit of anchorage joining:	1°16·01'N 103°51·66'E 1°16·08'N 103°51·76'E 1°15·92'N 103°51·88'E 1°16·03'N 103°52·02'E	
Substitute	anchoring limit with maritime limit joining from: to:	1°15·41'N 103°51·73'E 1°16·01'N 103°51·66'E	
		(HD/HE025/55/2011)	*NM 22/2012
Insert	 Fl.Y.2s7m3M ICT-1 firm line jetty, joining from: to:	1°15·77'N 103°52·08'E 1°16·21'N 103°51·76'E 1°15·77'N 103°52·08'E	
<hr/>			
200	3 Ed 22/9/11 Last NM 10/2012	(Admiralty Notices to Mariners No. 6/620/2012)	NM 23/2012
Insert		2°53·41'N 100°35·36'E	
		(Royal Malaysian Navy Notices to Mariners No. 1/35/2012)	NM 24/2012
Insert	submarine cable '  ' joining:	2°20·69'N 102°03·11'E 2°19·92'N 102°02·45'E 2°18·20'N 101°59·25'E 2°15·36'N 101°58·52'E 2°13·31'N 101°56·75'E 2°11·34'N 101°55·07'E 2°08·15'N 101°52·31'E 2°05·88'N 101°50·87'E 2°04·03'N 101°49·78'E 2°01·74'N 101°48·44'E 2°01·48'N 101°48·29'E (Chart border)	
		Marine Department, Malaysia Notices to Mariners No. 8/2012)	NM 25/2012
Substitute	light character Q.14m15M for Q.12m11M	2°33·89'N 101°23·36'E	

II
NOTICES TO MARINERS AND CHART CORRECTIONS

201	4 Ed 7/10/10 Last NM 105/2010	(Royal Malaysian Navy Notices to Mariners No. 1/35/2012)	NM 24/2012
Insert	submarine cable '  ' joining:		2°16·99'N 101°58·94'E (Chart border) 2°15·36'N 101°58·52'E 2°13·31'N 101°56·75'E 2°11·34'N 101°55·07'E 2°08·15'N 101°52·31'E 2°05·88'N 101°50·87'E 2°04·03'N 101°49·78'E 2°01·74'N 101°48·44'E 1°59·19'N 101°46·94'E 1°59·02'N 101°46·84'E

501	5 Ed 24/9/09 Last NM 2/2012	(HD/HY/AB0301911)	*NM 21/2012
Insert	limit of anchorage joining:		1°15·41'N 103°51·73'E 1°15·76'N 103°52·21'E 1°15·99'N 103°52·04'E (North Border)
Delete	limit of anchorage joining:		1°15·99'N 103°51·83'E 1°15·92'N 103°51·88'E 1°15·99'N 103°51·98'E (North Border)
Substitute	anchoring limit with maritime limit joining from: to:		1°15·41'N 103°51·73'E 1°15·99'N 103°51·66'E


502	5 Ed 22/9/11 Last NM 8/2012	(HD/HY/AB0301911)	*NM 21/2012
Insert	limit of anchorage joining:		1°15·41'N 103°51·73'E 1°15·76'N 103°52·21'E 1°16·03'N 103°52·02'E
Delete	limit of anchorage joining:		1°16·01'N 103°51·66'E 1°16·08'N 103°51·76'E 1°15·92'N 103°51·88'E 1°16·03'N 103°52·02'E
Substitute	anchoring limit with maritime limit joining from: to:		1°15·41'N 103°51·73'E 1°16·01'N 103°51·66'E

II
NOTICES TO MARINERS AND CHART CORRECTIONS

(HD/HE025/55/2011)

***NM 22/2012**

Insert

 **Fl.Y.2s7m3M ICT-1**
firm line jetty, joining from:
to:

1°15·77'N 103°52·08'E
1°16·21'N 103°51·76'E
1°15·77'N 103°52·08'E

II TEMPORARY AND PRELIMINARY NOTICES

*(NM 26T/2012) VIBRO-CORING SAMPLING IN WEST BOUND LANE OF THE TRAFFIC SEPARATION SCHEME IN THE SINGAPORE STRAIT.

Purpose

Mariners navigating in the Singapore Strait are hereby informed that Vibro-coring sampling operations will be carried out in the westbound lane of the Traffic Separation Scheme.

Date

With effect from 1st March to 31st April 2012 (2 month).

Duration

0700 to 1900hrs including Sunday and Public Holidays.

Working Area

Within an area bounded by the following coordinates from Singapore Port Limit and the area within the westbound lane of the Traffic Separation Scheme (please see charts attached):

Area 1 WGS 84 Datum		
Points	Lat. (N)	Long. (E)
1	1°15.827'	103°57.737'
2	1°14.865'	103°58.134'
3	1°13.298'	103°54.401'
4	1°13.884'	103°54.131'

Area G4 WGS 84 Datum		
Points	Lat. (N)	Long. (E)
1	1°14.897'	103°58.121'
2	1°16.217'	104°01.630'
3	1°16.097'	104°01.674'
4	1°14.684'	103°58.200'

Vessels

Vessels involved in the operations will display the appropriate day and night signals and will stand by on VHF Ch 14 and 12 and shall follow any traffic information given by Vessel Traffic Information Service (VTIS).

Navigational Broadcast

Navigational warning broadcast will be promulgated by VTIS on VHF CH 09 and NAVTEX to inform vessels of the dredging operation. Mariners are to maintain a listening watch for the above safety information.

Caution

Mariners are advised to:

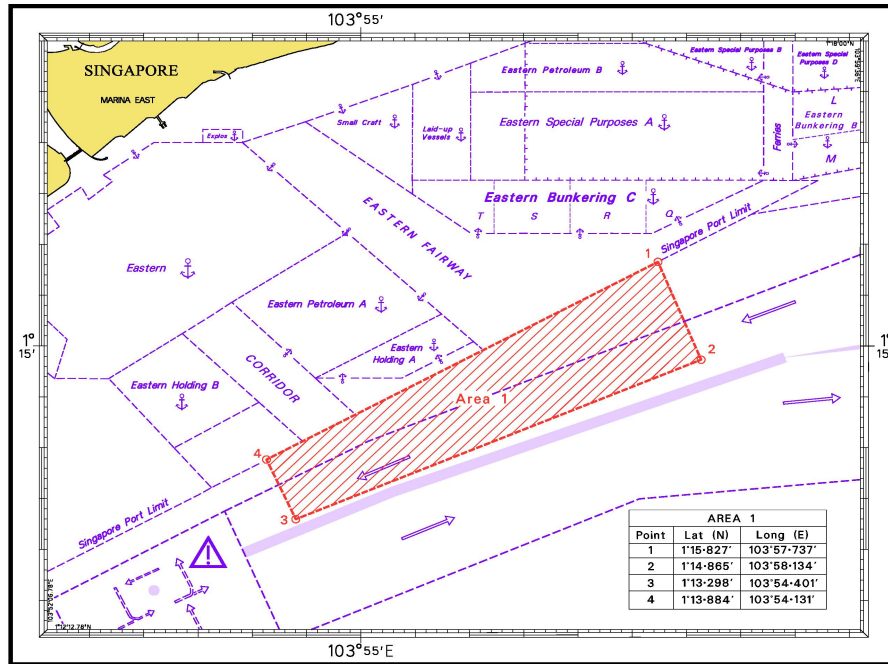
- (a) Navigate with caution and proceed at slow speed when approaching the area; and
- (b) Keep well clear of the working vessels.

Charts affected: SP1/GSP1, 202, 502 & 4041

Source: PENTA -OCEAN / KOON / HYUNDAI / VAN OORD JOINT VENTURE
HD/DB67/5/2012

II TEMPORARY AND PRELIMINARY NOTICES

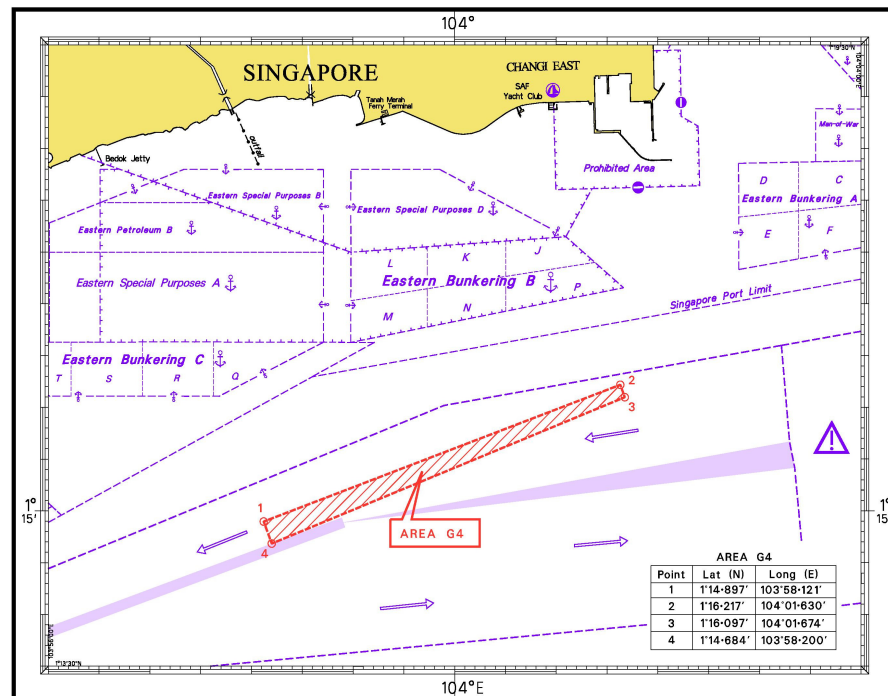
VIBRO-CORING SAMPLING IN WEST BOUND LANE OF THE TRAFFIC SEPARATION SCHEME IN THE SINGAPORE STRAIT – AREA 1



Prepared by TanLP/GohSN Hydrographic Dept MPA 30 Jan 12 CA021/12

HY Code AA1900912

VIBRO-CORING SAMPLING IN WEST BOUND LANE OF THE TRAFFIC SEPARATION SCHEME IN THE SINGAPORE STRAIT – AREA G4



Prepared by TanLP/GohSN Hydrographic Dept MPA 30 Jan 12 CA021/12

HY Code AA1900812

III NAVIGATIONAL INFORMATION

***(NM 27/2012) PORT MARINE NOTICES**

The following PMNs have been shortlisted, as they would be of particular interest to mariners.

These notices can be accessed directly from MPA website:

http://www.mpa.gov.sg/sites/port_and_shipping/circulars_and_notices/port_marine_notices.page

PMN No.	Subject
10/2012	Dredging works off Pasir Panjang Ferry Terminal.
13/2012	Construction of Wharf at Tuas View.
14/2012	Construction of sea water intake structure off Jurong Island.
16/2012	Soil investigation works off Tuas View.
17/2012	Reclamation work at Tuas View Extension.
18/2012	Construction works at Cleanseas jetty on Pulau Sebarok.
19/2012	Submarine cable installation off Changi East.
20/2012	Mooring and unmooring of vessels at mooring buoys at Banyan Basin, Jurong Island.
21/2012	Installation and maintenance of ADCP sensor buoy in Jurong Island Ayer Chawan Basin.

***(NM 28/2012) SINGAPOREAN PRINT-ON-DEMAND (POD) CHARTS**

Print-On-Demand (POD) Charts are the most up-to-date paper nautical charts printed for navigational use. These nautical charts are produced in accordance with the International Hydrographic Organisation (IHO) chart specifications. These official nautical charts are continually updated to the latest Notices to Mariners before they are printed and sold to users.

These POD Charts include GSP1, SP1, 200, 201, 202, 500, 501, 502 and 503.

BENEFITS TO OUR CUSTOMERS

Convenience

Customers need not make numerous hand corrections to the nautical charts before use. In addition the updated POD Charts are more accurate and reliable than offset printed charts with hand corrections.

Clarity

Clarity in the presentation of updated information as compared to lithographic printed charts, where in some cases there are several overlapping corrections over existing information.

Coverage

The POD Charts cover the Malacca and Singapore Straits, from One Fathom Bank to Horsburgh Lighthouse.

III
AMENDMENTS TO PUBLICATIONS

***(NM 29/2012) UPDATING OF PUBLICATION “SINGAPORE PORT INFORMATION 2010/2011”**

1. Page 96

DEPTHS OF NAVIGATIONAL CHANNELS AND FAIRWAYS

Insert the following:

LOCATIONS	DEPTHS (m)	
	Delete	Insert
Cruise Bay (Berth CC01 to VC01)	10.0	9.8

Source: Controlling Depth List January 2012 (HD/HY/B00102211)

2. Page 146 – Item 19a

WHARVES AND BERTHS

MARINA SOUTH – INTERNATIONAL CRUISE TERMINAL (1°15.9’N, 103°51.6’E)

Insert the following:

Berths	Length of Berth	Depth Alongside (Year Surveyed)
1	373m	11.5m (2011)
2	396m	11.3m (2011)

Source: HD/HY Code A00100612

3. Page 149 – Item 18a

JURONG ISLAND- SLNG TERMINAL (1°14.0’N, 103°40.2’E)

Insert the following:

Berths	Length of Berth	Depth Alongside (Year Surveyed)
SLNG	420m	17.7m (2011)

Source: HD/HY Code D00103811

4. Page 152 – Item 31

PULAU ULAR (SHELL REFINERY)(1°13.6’N, 103°45.4’E)

Insert the following:

Berths	Depth Alongside (Year Surveyed)	
	Delete	Insert
ECC Quay	9.1m (2007)	9.1m (2011)
13	11.2m (2009)	11.2m (2011)

Source: HD/HY Code F00103311 and F00103911

III
AMENDMENTS TO PUBLICATIONS

5. Page 152 – Item 30

PULAU BUKOM (SHELL REFINERY)(1°14.0'N, 103°46.1'E)

Insert the following:

Berths	Depth Alongside (Year Surveyed)	
	Delete	Insert
No. 1	12.3m (2001)	11.1m (2011)
No. 2	11.3m (2001)	8.9m (2011)
No. 3	11.3m (2005)	11.3m (2011)
No. 4	11.8m (2005)	11.8m (2011)
No. 5	12.9m (2005)	12.9m (2011)
No. 6	15.6m (2005)	15.7m (2011)
No. 7	13.5m (2005)	13.5m (2011)
No. 8	16.2m (2005)	16.2m (2011)
No. 10	15.8m (2005)	15.8m (2011)
No. 10B	6.1m (2001)	5.9m (2011)
No. 10C	6.0m (2001)	6.0m (2011)
No. 11	5.7m (2005)	5.6m (2011)
No. 12	13.2m (2005)	13.0m (2011)

Source: HD/HY Code F00103311 and F00103711

IV
REPRINT OF RADIO NAVIGATIONAL WARNINGS

The following Radio Navigational Warnings have been shortlisted, as they would be of particular interest to mariners.

TT012

BUFFALO ROCK ISOLATED DANGER MARKS FL(2)5S IN POSITION 01°09'90"N 103°48'15"E IS UNLIT.

TT018

RACON DELTA Q(6)FL.15S IN POSITION LAT 01°03'59"N LONG 103°38'86"E IS REPORTED UNLIT.

TT022 (AMENDED 060130Z)

A COASTER VESSEL WAS REPORTED SUNK IN POSITION 01°10'80"N 103°34'00"E. VESSELS PASSING IN THE VICINITY ARE ADVISED TO KEEP CLEAR AND NAVIGATE WITH CAUTION.

TT023

SELAT PHILLIP BUOY LFL.10S IN POSITION 01°03'00"N 103°39'00"E IS UNLIT.

TT173

VESSELS IN EAST JOHOR STRAIT ARE ADVISED TO NAVIGATE WITH CAUTION WHEN NEAR THE PROJECT AREAS OFF PULAU TEKONG, CHANGI AND MALANG PAPAN AS SHALLOW WATER AREAS EXIST. VESSELS ARE ADVISED TO KEEP LOOKOUT FOR TUGS AND BARGES NAVIGATING NEAR THE PROJECT AREAS AND PASSENGER FERRIES CROSSING BETWEEN CHANGI AND PULAU TEKONG AND VICINITY OF PASIR GUDANG.

TT884

SALVAGE OPERATIONS UNDERWAY IN 01°13'40"N 103°57'75"E. ALL SHIPS ARE REQUESTED TO GIVE A WIDE BERTH OF AT LEAST 5 CABLES WHEN PASSING THE AREA.

TT931

VESSELS NAVIGATING IN THE SINGAPORE STRAIT ARE REQUESTED NOT TO DIRECT THEIR HIGH INTENSITY SEARCHLIGHTS SKYWARD IN THE VICINITY OF CHANGI AIRPORT TO AVOID DISRUPTION TO AIR NAVIGATION.

TT961

VESSELS INTENDING TO CROSS THE TRAFFIC SEPARATION SCHEME (TSS) OR PRECAUTIONARY AREAS IN THE SINGAPORE STRAIT DURING THE HOURS OF DARKNESS ARE RECOMMENDED TO DISPLAY THE NIGHT SIGNALS CONSISTING OF 3 ALL-ROUND GREEN LIGHTS IN A VERTICAL LINE WITH EFFECT FROM 1ST JULY 2011 AT 0000UTC (0800SGT) AS DETAILED IN MARITIME AND PORT AUTHORITY OF SINGAPORE'S PORT MARINE CIRCULAR, 02 OF 2011 DATED 30 MAY 2011.

ISSUED BY SINGAPORE PORT OPERATIONS CONTROL CENTRE (as at 26th February 2012)

V
**EXTRACT OF ADMIRALTY NOTICES TO MARINERS
 FOR DUAL BADGED CHARTS**

These notices can also be accessed directly from UKHO Website:

<http://www.ukho.gov.uk/ProductsandServices/MaritimeSafety/Pages/NMPublic.aspx>

390* SINGAPORE – West Keppel Fairway North-eastwards – Maritime limit.Buoyage.Works.

Source: Maritime and Port Authority of Singapore

Chart 4034 [*previous update 118/12*] WGS84 DATUM

Insert	the accompanying block, showing amendments to maritime limit, buoyage and works, centred on:	1° 15'·678N., 103° 47'·670E.
--------	--	------------------------------

Chart 4035 [*previous update 119/12*] WGS84 DATUM

Insert	the accompanying block, showing amendments to maritime limit, buoyage and works, centred on:	1° 15'·680N., 103° 47'·665E.
--------	--	------------------------------

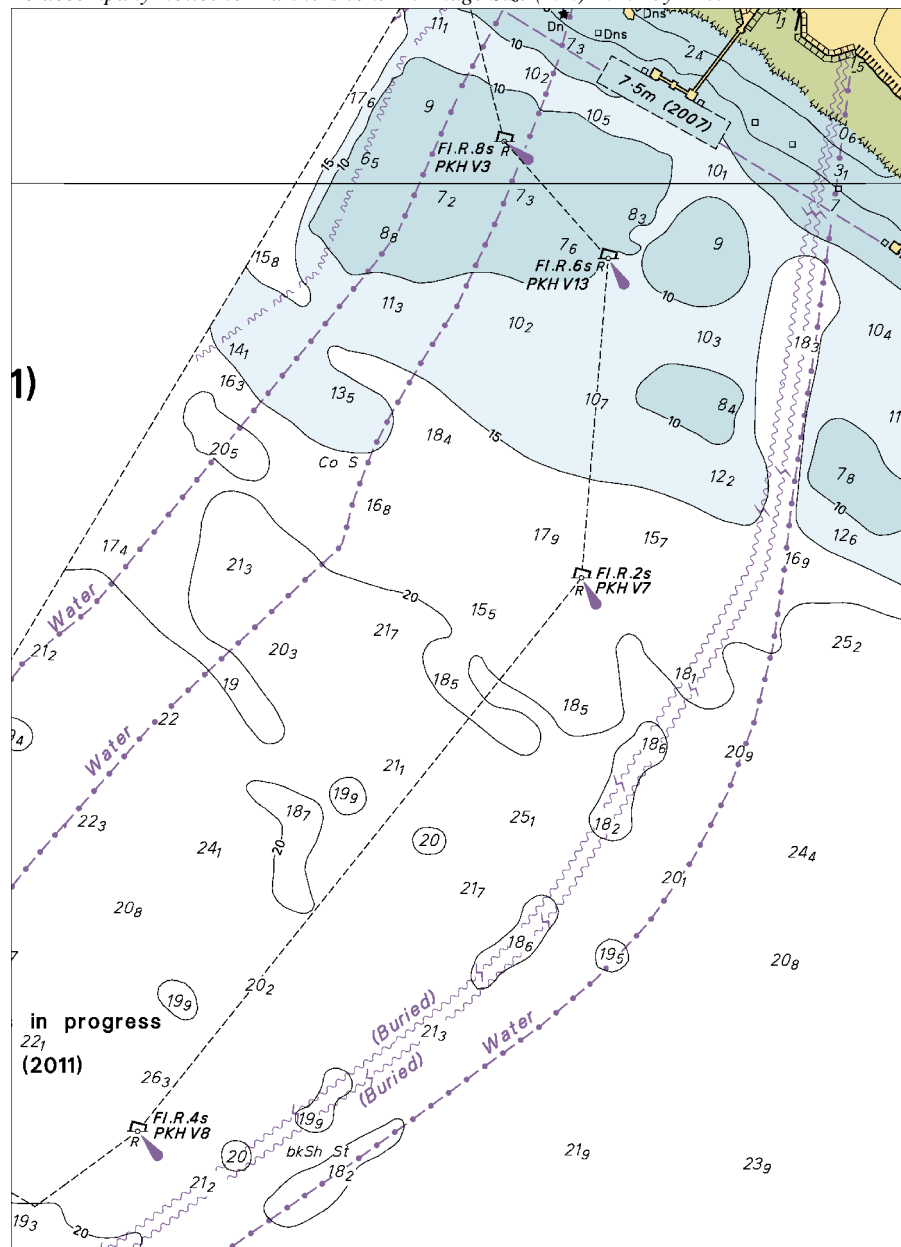
Chart 4040 [*previous update 118/12*] WGS84 DATUM

Insert	the accompanying block, showing amendments to maritime limit, buoyage and works, centred on:	1° 15'·70N., 103° 47'·65E.
--------	--	----------------------------

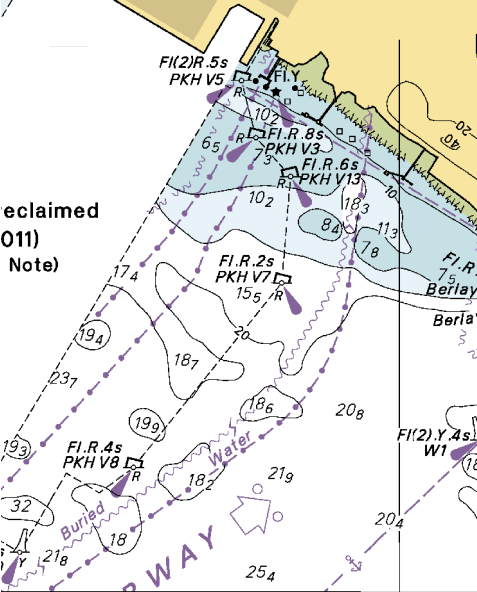
Chart 4041 [*previous update 119/12*] WGS84 DATUM

Insert	the accompanying block, showing amendments to maritime limit, buoyage and works, centred on:	1° 15'·69N., 103° 47'·64E.
--------	--	----------------------------

Updated to Admiralty Notices to Mariners Edition No. 8 of 2012 dated 23rd February 2012.

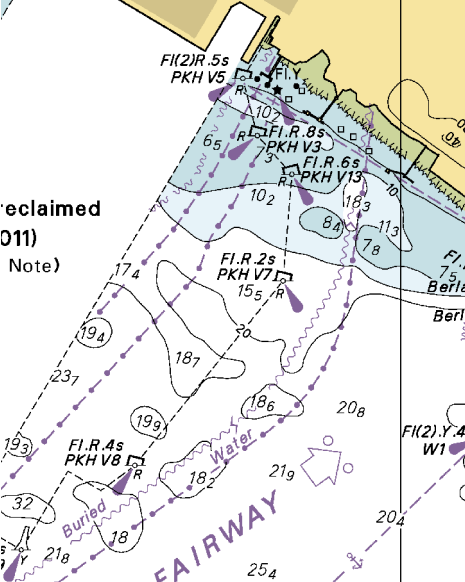


To accompany Notice to Mariners 390/12. Image Size (mm) 78.5 by 62.9



Block for Chart No 4040

To accompany Notice to Mariners 390/12. Image Size (mm) 77.5 by 61.4



Block for Chart No 4041

SINGAPORE ELECTRONIC NAVIGATIONAL CHART (ENC) DISTRIBUTORS

Please approach any of the appointed distributors to purchase the Singapore ENC.

DISTRIBUTOR	ADDRESS	TELEPHONE/FAX NO./EMAIL/WEBSITE
DPM (Singapore) Pte Ltd	1 Maritime Square, #09-72 HarbourFront Centre, Singapore 099253	Tel. No.: +65 6270 4060 Fax No.: +65 6276 3858 Email: sales@dpmsingapore.com.sg Website: http://www.dpmsingapore.com.sg
MARIS Information Systems (MARIS)	52 Telok Blangah Road #01-06 Telok Blangah House Singapore 058809	Tel. No.: +65 6276 1472 Fax No.: +65 6276 1473 Email: support@maris.sg Website: http://www.maris.no
Maritime Information Systems AS (MARIS)	Danholmen 25, 3128 Notteroy, Norway	Tel. No.: +47 33 30 42 50 Fax No.: +47 33 30 42 51 Email: sales@maris.no Website: http://www.maris.no
Motion Smith	15 Jalan Kilang Barat #08-01/05 Frontech Centre Singapore 159357	Tel. No.: +65 6220 5098 Fax No.: +65 6225 4902 Email: sales@motsmith.com Website: http://www.motsmith.com
Transas Marine Pacific Pte Ltd	Cyber Centre 16 & 18 Jalan Kilang Barat Singapore 159358	Tel. No.: +65 6271 0200 Fax No.: +65 6271 7300 Email: dominic@transas.com.sg Website: http://www.transas.com.sg
Vector Services Pte Ltd	15 West Coast Highway, #02-14A Pasir Panjang Building Singapore 117861	Tel. No.: +65 6777 3602 Fax No.: +65 6777 9203 Email: kwchoy@pacific.net.sg
ChartWorld Asia Pacific Pte Ltd	Frontech Centre 07-01 15 Jalan Kilang Barat, Singapore 159357	Tel. No.: +65 6513 3500 Email: steven.schootbrugge@chartworld.com Website: http://www.chartworld.com
ChartWorld GmbH	Ruhrstrasse 90, D-22761 Hamburg, Germany	Tel. No.: +49 40 853 58 6942 Fax No.: +49 40 853 58 6949 Email: sales@chartworld.com Website: http://www.chartworld.com
Japan Hydrographic Association Electronic Charts Division	Daiichi Sogo Bldg, 6F 1-6-6, Hanedakuko, Ota-ku, Tokyo 144-0041, Japan	Tel. No.: +81 3 5708 7093 Fax No.: +81 3 5708 7094 Email: shimizu-6kj@jha.jp Website: http://www.jha.or.jp/en/jha/
Jeppesen Norway A/S	P.O Box 212 , N-4371 Egersund, Norway	Tel No.: +47 514 64 700 Fax No: +47 514 64 701 Email: license.marine@jeppesen.com Website : http://www.jeppesen.com
PRIMAR STAVANGER	Lervigsveien 36, P.O Box 60, N-4001 Stavanger, Norway	Tel. No.: +47 51 93 9500 Fax No.: +47 51 93 9501 Email: sales@ecc.no Website : http://www.primar.no
United Kingdom Hydrographic Office	Admiralty Way, Taunton, Somerset TA1 2DN United Kingdom	Tel. No.: +44 1823 337900 Fax No.: +44 1823 284077 Email: ENC.SalesReports@ukho.gov.uk Website: http://www.ukho.gov.uk

**Chart Agents for the Maritime and Port Authority of Singapore
Nautical Charts and Publications**

Please approach any of the appointed chart agent to purchase the Singapore Nautical Charts and Publications.

CHART AGENT	ADDRESS	TELEPHONE/FAX NO./EMAIL/WEBSITE
DPM (Singapore) Pte Ltd	1 Maritime Square, #09-72 HarbourFront Centre, Singapore 099253	Tel. No.: +65 6270 4060 Fax No.: +65 6276 3858 Email: sales@dpmsingapore.com.sg Website: http://www.dpmsingapore.com.sg
E.W. Liner Charts & Publications Pte Ltd	102F, Pasir Panjang Road, #08-01, Citilink Warehouse Complex, Singapore 118530	Tel. No.: +65 6323 0773 Fax No.: +65 6323 0775 Email: ewliner@singnet.com.sg Website: http://www.ewliner.com
Motion Smith	15 Jalan Kilang Barat #08-01/05 Frontech Centre Singapore 159357	Tel. No.: +65 6220 5098 (After office hours: +65 8163 9993) Fax No.: +65 6225 4902 Email: sales@motsmith.com Website: http://www.motsmith.com

HYDROGRAPHIC NOTE - Instructions

1. Mariners are requested to notify the Chief Hydrographer, Maritime and Port Authority of Singapore, when new or suspected dangers to navigation are discovered, changes are observed in aids to navigation or where corrections to nautical publications may be necessary. Reports, which cannot be confirmed or are lacking in certain details should not be withheld.
2. Any ambiguities of time, positioning and depth should be stressed and any firm expectation of being able to check the information provided on a following voyage should be mentioned.
3. Mariners using satellite position fixing systems, eg. GPS, should provide details of equipment and datum used (where applicable). Where bearings (true or magnetic) are taken visually or by radar to fix a position, it should include more than two objects in order to provide a check on its accuracy. A position may also be defined by bearing and distance from a conspicuous object eg. beacon, lighthouse etc.
4. The note should include a tracing or a digital image of the chart used and the details should be clearly marked.
5. Echo sounders frequently register greater depths than the advertised maximum depth for the equipment, eg. a trace appearing at 50 metres may be in fact be 550 metres or even 1050 metres for equipment whose maximum depth is 500 metres. Erroneous depths caused by 2nd transmission error can usually be recognised by the following:
 - (a) the tracing being weaker than normal for the depth registered,
 - (b) the trace appearing to pass through the transmission line,
 - (c) the feathery nature of the trace.
6. Upon receipt of a hydrographic note, a Notice to Mariners may be issued. The sender's vessel or name is quoted as the source unless the same information is also received in foreign Notices to Mariners.
7. Reports of shoals, uncharted dangers and defects in aids to navigation may also be made to the appropriate Singapore Port Operations Control Centre on VHF Channels 10, 12, 14, 68 or 73.

HYDROGRAPHIC NOTE

To:

Chief Hydrographer
Maritime and Port Authority of Singapore
460 Alexandra Road PSA Building #20-00
Singapore 119963

Tel : (65) 6375 1227
Fax : (65) 6278 7646
Email : hydrographic@mpa.gov.sg

Sender's Contact Details :

Date :

Name of Vessel :

Address of Sender :

Tel : Fax :

Email :

Nature of Observation :

General Location :

Subject :

Position : Lat. Long.

Charts Used :

Date & Time of Observation :

Details :

.....

.....

Attachment :

Equipment Used :

Type of Position Fixing : GPS / DGPS Others :

Type of Echo Sounder :

Name and Signature :

Ship's/Company's Stamp :