



SINGAPOREAN NOTICES TO MARINERS

SECTION	CONTENT	Page
I	Index of Charts & Publications	1
II	New Publications	6
	Notices to Mariners and Chart Corrections	7
	Temporary and Preliminary Notices	9
III	Navigational Information	10
	Amendments to Publications	11
IV	Reprint of Radio Navigational Warnings	13
V	Extract of Admiralty Notices to Mariners for Dual Badged Charts	14

The monthly Notices to Mariners contain corrective information affecting charts published by the Hydrographic Department, Maritime and Port Authority of Singapore. The information contained in these Notices should be updated on the charts affected. Notices under Section II apply only to the particular Singaporean Chart(s) indicated.

Mariners are requested to notify the Chief Hydrographer, Maritime and Port Authority of Singapore, immediately on the discovery of new dangers or suspected dangers to navigation and of changes or defects in aids to navigation. See Hydrographic Note on back page.

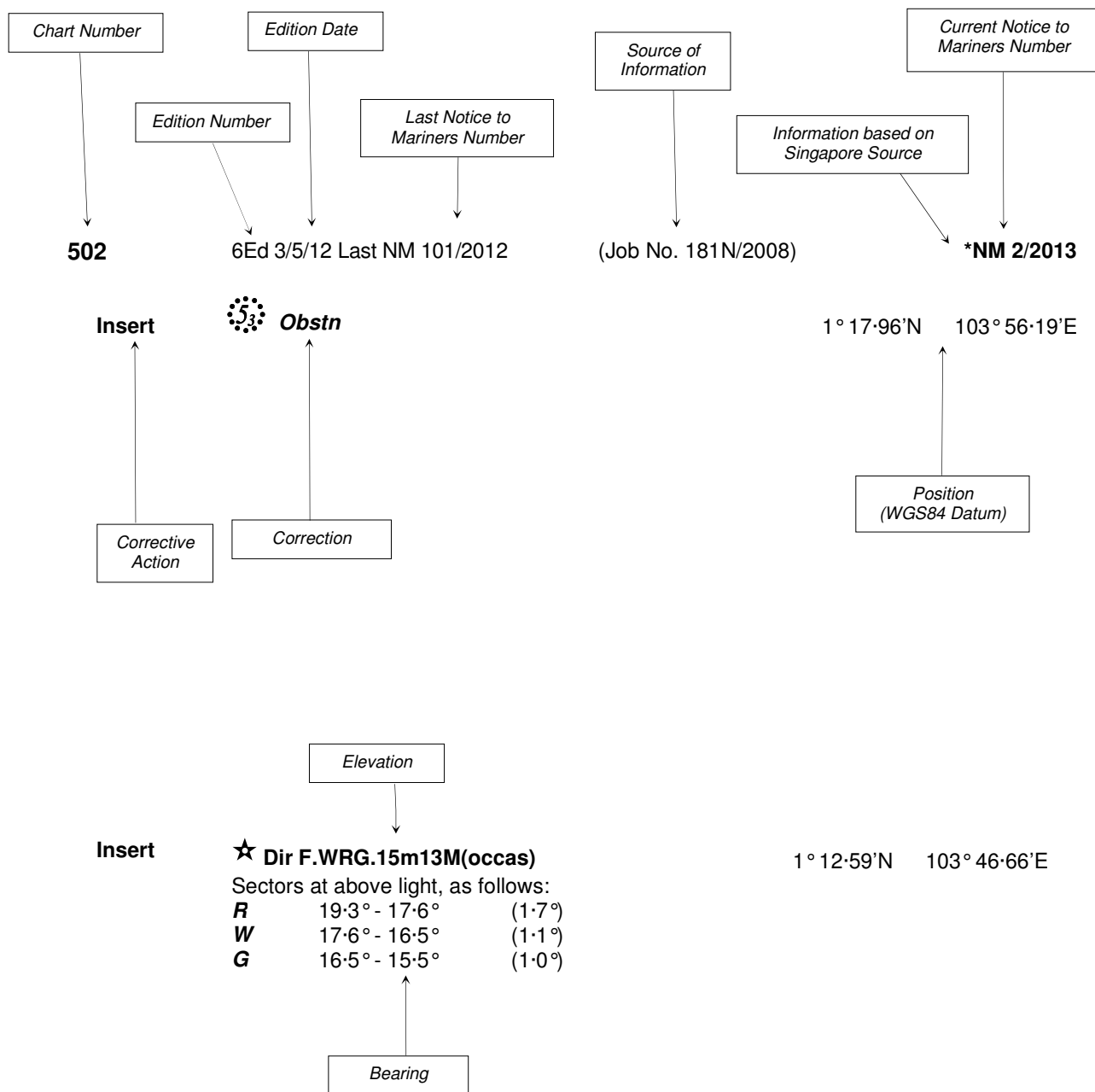
The monthly Singaporean Notices to Mariners can be accessed directly from the MPA website:
[www.mpa.gov.sg/sites/port_and_shipping/circulars_and_notices/singapore_notices_to_mariners\(ntm\).page](http://www.mpa.gov.sg/sites/port_and_shipping/circulars_and_notices/singapore_notices_to_mariners(ntm).page)

This service is offered free of charge.

Hydrographic Department
Maritime and Port Authority of Singapore
460 Alexandra Road
PSA Building #20-00
Singapore 119963
Tel: (65) 6375 1227
Fax: (65) 6278 7646

EXPLANATION OF FORMAT

The elements of a typical chart correction are explained below.



Notes:

- a) Notice to Mariners number followed by:
T indicates a Temporary Notice (eg. ***NM 3T/2013**).
P indicates a Preliminary Notice (eg. ***NM 4P/2013**).
- b) Bearings are true reckoned clockwise from 000° to 359°; those relating to lights are from seaward.
- c) Heights and elevations are above Mean High Water Springs.

I
INDEX OF CHARTS AND PUBLICATIONS

INDEX OF AFFECTED CHARTS

DESCRIPTION	NOTICE NO.	PAGE NO.
Index of Singaporean Charts	-	3
Index of Dual Badged Charts	-	4
Index of Singapore Electronic Navigational Chart (ENC)	-	5
New Edition Singaporean Chart	-	6
Singaporean Chart GSP1/SP1	*28 , *29, *30, *31 *32, *33, 34	7
Singaporean Chart 202	*32, *33, 35	7
Singaporean Chart 501	*29, *32, *33	8
Singaporean Chart 502	*28	8
Temporary and Preliminary Notices	36P	9
Singapore Port Marine Notices	*37	10
Singaporean Print-On-Demand (POD) Charts	*38	10
Amendments to Publications	*39	11, 12
Reprint of Radio Navigational Warnings	-	13
Extract of Admiralty Notices to Mariners for Dual Badged Charts	-	14
Singapore Electronic Navigational Chart (ENC) Distributors	-	15
Chart Agents for the Maritime and Port Authority of Singapore Nautical Charts and Publications	-	16

*Denotes information are based on Singaporean source.

I
INDEX OF CHARTS AND PUBLICATIONS

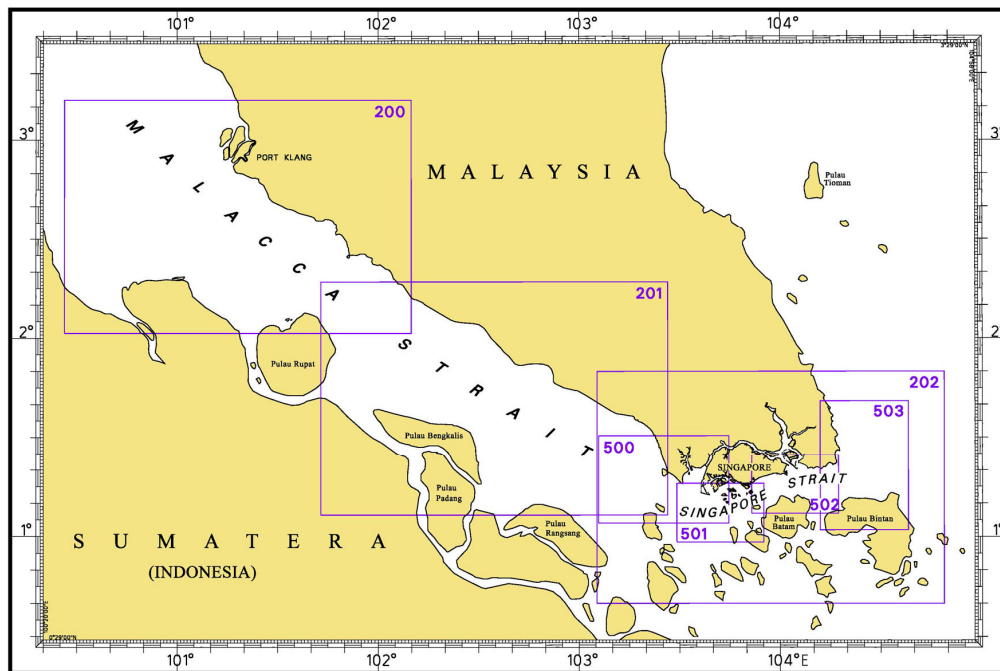
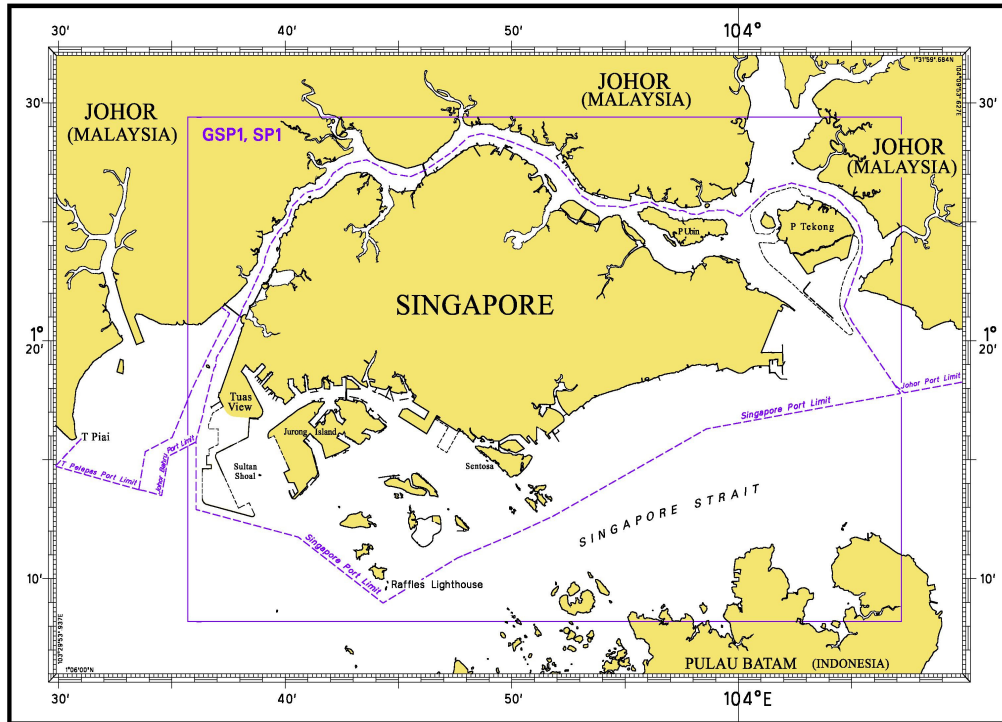
INDEX OF NOTICES

NOTICE NO.	DESCRIPTION	PAGE NO.
-	Index of Singaporean Charts	3
-	Index of Dual Badged Charts	4
-	Index of Singapore Electronic Navigational Chart (ENC)	5
-	New Edition Singaporean Chart	6
*28, *29, *30, *31 *32, *33, 34	Singaporean Chart GSP1/SP1	7
*32, *33, 35	Singaporean Chart 202	7
*29, *32, *33	Singaporean Chart 501	8
*28	Singaporean Chart 502	8
36P	Temporary and Preliminary Notices	9
*37	Singapore Port Marine Notices	10
*38	Singaporean Print-On-Demand (POD) Charts	10
*39	Amendments to Publications	11, 12
-	Reprint of Radio Navigational Warnings	13
-	Extract of Admiralty Notices to Mariners for Dual Badged Charts	14
-	Singapore Electronic Navigational Chart Distributors	15
-	Chart Agents for the Maritime and Port Authority of Singapore Nautical Charts and Publications	16

* Denotes information are based on Singaporean source.

I INDEX OF CHARTS AND PUBLICATIONS

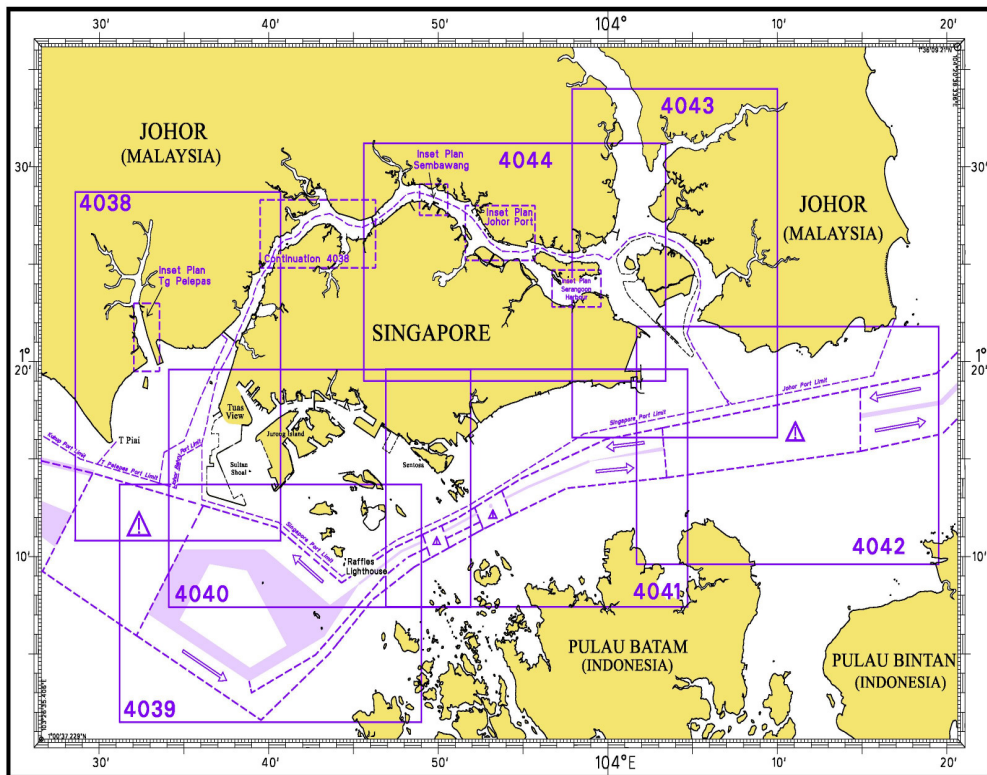
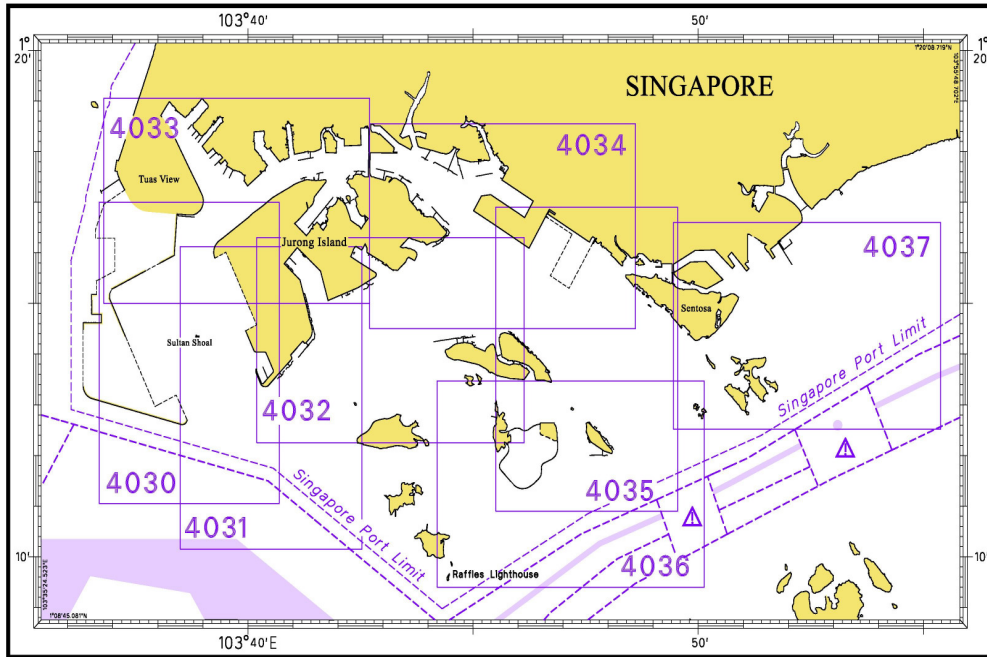
INDEX OF SINGAPOREAN CHARTS



Notes:
 Updated SINGAPOREAN Charts are available through our Print-On-Demand (POD) Chart Service. For more information, refer to Section III – Navigational Information. These charts can be purchased from our authorised Chart Agents.

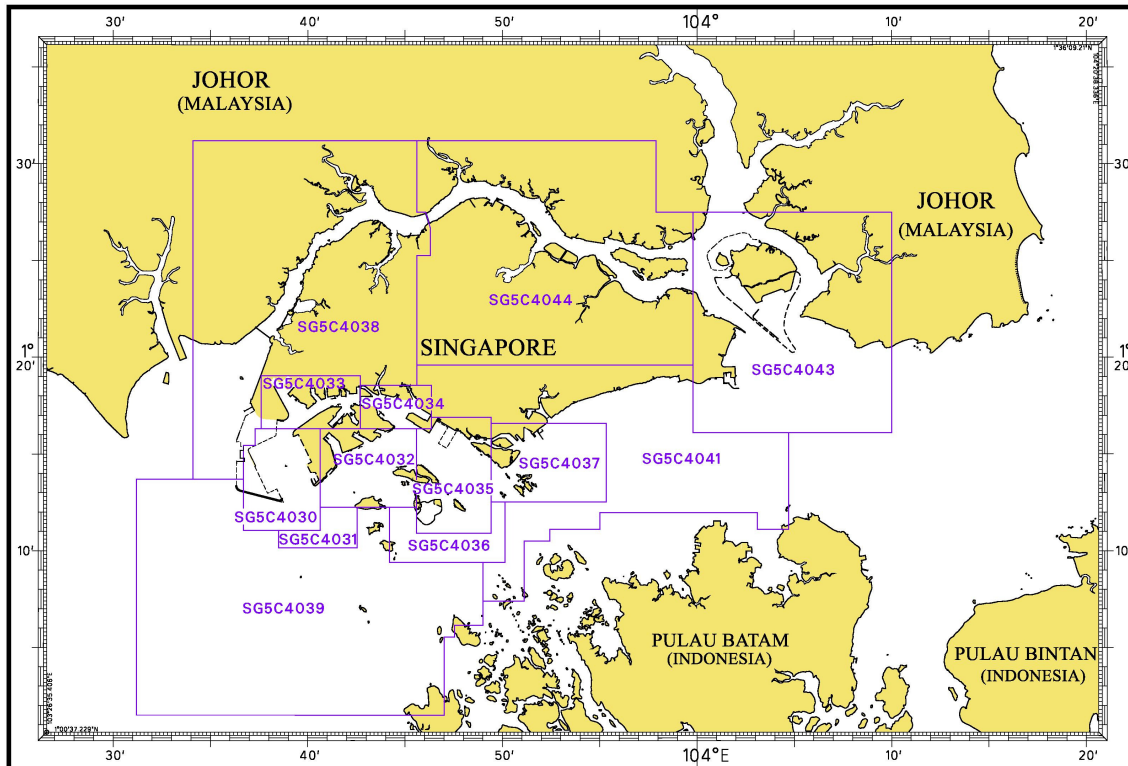
I
INDEX OF CHARTS AND PUBLICATIONS

INDEX OF DUAL BADGED CHARTS



I INDEX OF CHARTS AND PUBLICATIONS

INDEX OF SINGAPORE ELECTRONIC NAVIGATIONAL CHART (ENC)






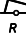

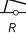

COVERAGE OF SINGAPORE ELECTRONIC NAVIGATIONAL CHART (ENC)

ENC Name	ENC Coverage	ENC Edition
SG5C4030	West Jurong Anchorages and Temasek Fairway	5 th Edition (3/05/2012)
SG5C4031	Western Approaches to Jurong Island	5 th Edition (3/05/2012)
SG5C4032	Sinki Fairway	7 th Edition (3/05/2012)
SG5C4033	Tuas Bay, West Jurong Channel and Pesek Basin	5 th Edition (3/05/2012)
SG5C4034	East Jurong Channel, Pasir Panjang Terminal and West Keppel Fairway	10 th Edition (3/05/2012)
SG5C4035	Western Anchorages, Jong Fairway and Cruise Bay	12 th Edition (27/09/2012)
SG5C4036	Raffles Lighthouse to The Sisters	6 th Edition (3/05/2012)
SG5C4037	Keppel Harbour, Tanjong Pagar Terminal and Approaches	6 th Edition (3/05/2012)
SG5C4038	Johor Strait – Western Part	5 th Edition (3/05/2012)
SG5C4039	Western Approaches to Main Strait	5 th Edition (3/05/2012)
SG5C4041	Pulau Sebarok to Changi	6 th Edition (3/05/2012)
SG5C4043	Kuala Johor and Sungai Johor	8 th Edition (16/08/2012)
SG5C4044	Johor Strait – Eastern Part	8 th Edition (16/08/2012)



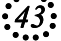
**II
NEW PUBLICATIONS**

Nil

II
NOTICES TO MARINERS AND CHART CORRECTIONS

GSP1/SP1	7 Ed 3/05/12 Last NM 16/2013	(HD/HY/A00111710)		*NM 28/2013
Insert	 Wk		1°16'31'N	103°56'66'E
		(HD/HY/F00100513)		*NM 29/2013
Insert	 Wk		1°10'10'N	103°45'60'E
		(HD/HE025/5/2013)		*NM 30/2013
Insert	 Fl.Y.4s Bukom ADCP1		1°14'35'N	103°46'26'E
		(HD/HE025/9/2013)		*NM 31/2013
Insert	light character for Menalung Buoy, Fl.G.10s		1°12'80'N	103°44'09'E
		(HD/HE025/12/2013)		*NM 32/2013
Insert	 Fl.R.5s Sebarok legend '(collapsed)' at Sebarok Beacon		1°11'86'N 1°11'84'N	103°48'42'E 103°48'36'E
		(HD/HE025/11/2013)		*NM 33/2013
Delete	Automatic Identification System 'AIS' and Fl.R.5s7m10M at Sebarok Beacon		1°11'84'N	103°48'36'E
		(Malaysia Marine Department NM No. 20/2013)		NM 34/2013
Insert	 Fl(2)R.5s10m5M Neville Rock		1°26'68'N	104°02'62'E
Delete	 Fl(2)R.5s Neville Rock		1°26'65'N	104°02'74'E
<hr/>				
202	6 Ed 24/09/09 Last NM 21/2013	(HD/HE025/12/2013)		*NM 32/2013
Insert	 Fl.R.5s Sebarok legend '(collapsed)' at Sebarok Beacon		1°11'86'N 1°11'84'N	103°48'42'E 103°48'36'E
		(HD/HE025/11/2013)		*NM 33/2013
Delete	Fl.R.5s10M at		1°11'84'N	103°48'36'E
		(Admiralty Notice No. 51/5721/2012)		NM 35/2013
Insert	radar beacon, Racon (M) , at light		0°58'90'N	104°13'61'E

II
NOTICES TO MARINERS AND CHART CORRECTIONS

501	6 Ed 3/05/12 Last NM 22/2013	(HD/HY/F00100513)	*NM 29/2013
Insert	 <i>Wk</i>		1°10'10"N 103°45'60"E
		(HD/HE025/12/2013)	*NM 32/2013
Insert	 FI.R.5s Sebarok legend '(collapsed)' at Sebarok Beacon		1°11'86"N 103°48'42"E 1°11'84"N 103°48'36"E
		(HD/HE025/11/2013)	*NM 33/2013
Delete	Automatic Identification System 'AIS' and FI.R.5s7m10M at Sebarok Beacon		1°11'84"N 103°48'36"E
<hr style="border-top: 1px dashed black;"/>			
502	6 Ed 3/05/12 Last NM 21/2013	(HD/HY/A00111710)	*NM 28/2013
Insert	 <i>Wk</i>		1°16'31"N 103°56'66"E
<hr style="border-top: 1px dashed black;"/>			

II
TEMPORARY AND PRELIMINARY NOTICES

(NM 36P/2013)

**SOUTH EAST ASIA JAPAN CABLE SYSTEM (SJC) -
Post Lay Inspection and Burial (PLIB)**

- Purpose** : The SJC submarine cable Post Lay Inspection and Burial shall be executed through Sector 7 and Sector 8; within the proximities of the Precautionary Area, and in the way of the East Bound Traffic Lane of the Traffic Separation Scheme (TSS) in the Singapore Strait.
- Work Vessel** : 'MIRAERO'
- Call Sign** : DSRB3
- Date of work** : With effect from 26th February 2013 to 5th March 2013.
- Duration of work** : The MIRAERO vessel will take up to 6 working days to start and finish the PLIB within the stipulated period.
- Operating hours** : Daily, from 0000 hrs to 2400 hrs (including Sundays and Public Holidays).

1. The Post-Lay Inspection and Burial works positions are as follows :

Position	(Co-ordinates: WGS84)		Remarks (Working Hours)
	Latitude (N)	Longitude (E)	
Start Point	01° 09.903 N	103° 34.832 E	Daily, from 0000 to 2400 Hrs
End Point	01° 05.833 N	103° 31.693 E	Daily, from 0000 to 2400 Hrs
Start Point	01° 05.299 N	103° 45.262 E	Daily, from 0000 to 2400 Hrs
End Point	01° 10.992 N	103° 53.850 E	Daily, from 0000 to 2400 Hrs

2. **Charts affected** : GSP1, SP1, 202, 500, 501, 4039, 4040 and 4041.
3. **Caution** : Mariners are advised
a) to navigate with caution.
b) to give a wide berth when approaching the cable installation vessel.

Source : HD/DB67/7/2013.

III NAVIGATIONAL INFORMATION

***(NM 37/2013) SINGAPORE PORT MARINE NOTICES**

The following Port Marine Notices have been shortlisted, as they would be of particular interest to mariners.

These notices can be accessed directly from MPA website:
www.mpa.gov.sg/sites/port_and_shipping/circulars_and_notices/port_marine_notices.page

PMN No.	Subject
12/2013	Dredging works off Cyrene Reef.
13/2013	Restoration work along shoreline of Pulau Ubin.
14/2013	Construction of sea water intake structure at Singapore Refining Company Terminal, Jurong Island.
15/2013	Reclamation work at Tuas View Extension.
16/2013	Shell Bukom SBM Subsea Pipeline Repair.
17/2013	Soil investigation works off Temasek Fairway and West Jurong Channel.
18/2013	Dredging works off Shell Bukom SBM.

***(NM 38/2013) SINGAPOREAN PRINT-ON-DEMAND (POD) CHARTS**

Print-On-Demand (POD) Charts are the most up-to-date paper nautical charts printed for navigational use. These nautical charts are produced in accordance with the International Hydrographic Organisation (IHO) chart specifications. These official nautical charts are continually updated to the latest Notices to Mariners before they are printed and sold to users.

These POD Charts include GSP1, SP1, 200, 201, 202, 500, 501, 502 and 503.

BENEFITS TO OUR CUSTOMERS

Convenience

Customers need not make numerous hand corrections to the nautical charts before use. In addition the updated POD Charts are more accurate and reliable than offset printed charts with hand corrections.

Clarity

Clarity in the presentation of updated information as compared to lithographic printed charts, where in some cases there are several overlapping corrections over existing information.

Coverage

The POD Charts cover the Malacca and Singapore Straits, from One Fathom Bank to Horsburgh Lighthouse.

III
AMENDMENTS TO PUBLICATIONS

*(NM 39/2013) UPDATING OF PUBLICATION "SINGAPORE PORT INFORMATION 2012/2013"

DEPTHS OF NAVIGATIONAL CHANNELS AND FAIRWAYS

1. Page 104

Amend the following:

LOCATIONS	DEPTHS (m)	REMARKS
East Keppel Fairway (eastern half)	16.0	Deep water channel

Source: Berth List dated 4.2.13

WHARVES AND BERTHS

2. Page 156 – Item 2

KEPPEL TERMINAL (PSA SINGAPORE TERMINALS) (1°16.0'N 103°50.0'E)

Amend the following:

Berth	Length of Berth	Depth Alongside (Year Surveyed)	Controlling Depth In Approaches
K11	135m	13.4m (2012)	15.0m

Source: Berth List dated 4.2.13

3. Page 162 – Item 9

Amend the following:

MARINA SOUTH – INTERNATIONAL CRUISE TERMINAL (1°15.9'N 103°51.6'E) to
MARINA SOUTH – MARINA BAY CRUISE CENTRE (1°15.9'N 103°51.6'E)

Source: Berth List dated 4.2.13

4. Page 164 – Item 17

**JURONG ISLAND – (TEMASEK BASIN) (HELIOS TERMINAL CORPORATION PTE LTD)
(1°13.6'N 103°40.4'E)**

Amend the following:

Berth	Length of Berth	Depth Alongside (Year Surveyed)	Controlling Depth In Approaches
OHT 1	372m	18.5m (2007)	15.5m
OHT 2			
OHT 3	35.8m	14.7m (2007)	15.5m

Source: Berth List dated 4.2.13

III
AMENDMENTS TO PUBLICATIONS

5. Page 166 – Item 23

Insert the following:

JURONG ISLAND (OILTANKING SINGAPORE LTD) (1°16.8'N 103°44.1'E)

Berth	Length of Berth	Max LOA	Depth Alongside (Year Surveyed)	Controlling Depth In Approaches
11	270m	236m	14.8m (2010)	15.0m
12	266m	220m	13.9m (2010)	15.0m

Delete the following Item 24

JURONG ISLAND (OILTANKING SINGAPORE LTD) (1°16.3'N 103°44.3'E)

Berth	Length of Berth	Max LOA	Depth Alongside (Year Surveyed)	Controlling Depth In Approaches
11	270m	236m	14.8m (2010)	15.0m
12	266m	220m	13.9m (2010)	15.0m

Source: Berth List dated 4.2.13

6. Page 168 – Item 32

Amend the following:

PULAU BUKOM (SHELL REFINERY) (1°14.0'N 103°46.1'E)

Berth	Length of Berth	Max LOA	Depth Alongside (Year Surveyed)	Controlling Depth In Approaches
6	245m	110m - 270m	16.5m (2013)	13.6m

Source: HY Code C00100113

IV
REPRINT OF RADIO NAVIGATIONAL WARNINGS

The following Radio Navigational Warnings have been shortlisted, as they would be of particular interest to mariners.

TT071

REPORT OF A CAPSIZED SAMPAN AT APPROXIMATE POSITION 01°07'08"N 103°41'93"E.

TT173

VESSELS IN EAST JOHOR STRAIT ARE ADVISED TO NAVIGATE WITH CAUTION WHEN NEAR THE PROJECT AREAS OFF PULAU TEKONG, CHANGI AND MALANG PAPAN AS SHALLOW WATER AREAS EXIST. VESSELS ARE ADVISED TO KEEP LOOKOUT FOR TUGS AND BARGES NAVIGATING NEAR THE PROJECT AREAS AND PASSENGER FERRIES CROSSING BETWEEN CHANGI AND PULAU TEKONG AND VICINITY OF PASIR GUDANG.

TT961

VESSELS INTENDING TO CROSS THE TRAFFIC SEPARATION SCHEME(TSS) OR PRECAUTIONARY AREAS IN THE SINGAPORE STRAIT DURING THE HOURS OF DARKNESS ARE RECOMMENDED TO DISPLAY THE NIGHT SIGNALS CONSISTING OF 3 ALL-ROUND GREEN LIGHTS IN A VERTICAL LINE WITH EFFECT FROM 1ST JULY 2011 AT 0000UTC (0800SGT) AS DETAILED IN MARITIME AND PORT AUTHORITY OF SINGAPORE'S PORT MARINE CIRCULAR, 02 OF 2011 DATED 30 MAY 2011.

ISSUED BY SINGAPORE PORT OPERATIONS CONTROL CENTRE (as at 24th February 2013)

V
**EXTRACT OF ADMIRALTY NOTICES TO MARINERS
 FOR DUAL BADGED CHARTS**

These notices can also be accessed directly from UKHO Website:

www.ukho.gov.uk/ProductsandServices/MaritimeSafety/Pages/NMPublic.aspx

718 SINGAPORE – Jurong Island South-westwards, Terumbu Pempang Laut North-westwards and Pulau Batam North-westwards – Wreck. Buoyage. Radar beacon. Automatic Identification System. Light-beacon. Dredged area. Legend. Coastline. Depths.

Source: Maritime and Port Authority of Singapore

Chart 4030 [*previous update 253/13*] WGS84 DATUM

Insert	the accompanying block, showing new dredged area, legend, buoyage and amendments to coastline and depths, centred on:	1° 14'·278N., 103° 39'·930E.
--------	---	------------------------------

Chart 4031 [*previous update 253/13*] WGS84 DATUM

Insert	the accompanying block, showing new dredged area, legend, buoyage and amendments to coastline and depths, centred on:	1° 14'·278N., 103° 39'·932E.
--------	---	------------------------------



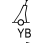

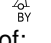
Chart 4032 [*previous update 253/13*] WGS84 DATUM

Insert	Automatic Identification System. AIS at Sinki light-beacon	(a) 1° 14'·048N., 103° 43'·310E.
Amend	range of Sinki light-beacon to, 10M	(a) above

Chart 4040 [*previous update 253/13*] WGS84 DATUM

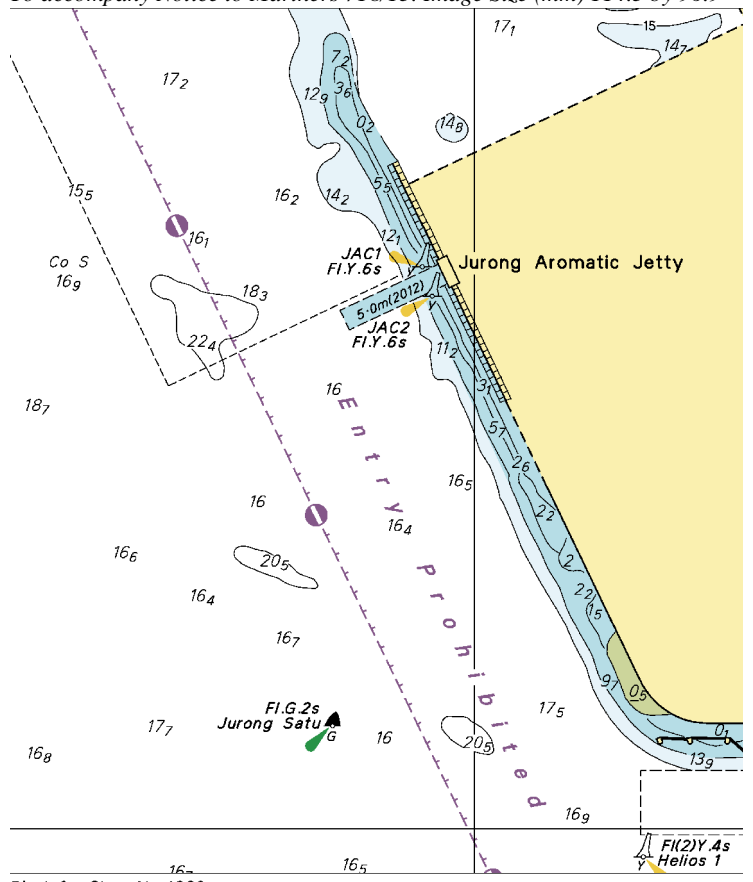
Insert	Automatic Identification System. AIS at Sinki light-beacon	(a) 1° 14'·05N., 103° 43'·31E.
Amend	range of Sinki light-beacon to, 10M	(a) above

Chart 4041 [*previous update 457/13*] WGS84 DATUM

Delete		(a)	1° 13'·38N., 103° 57'·74E.
			(a) above
	Q(3)10s, 400m ESE of:		(a) above
			(a) above
	Q(6)+LFl. 10s, 560m S of:		(a) above
			(a) above
	Q(9)15s, 470m WSW of:		(a) above
			(a) above
	Q and associated radar beacon, <i>Racon (D)</i> , close NNW of:		(a) above

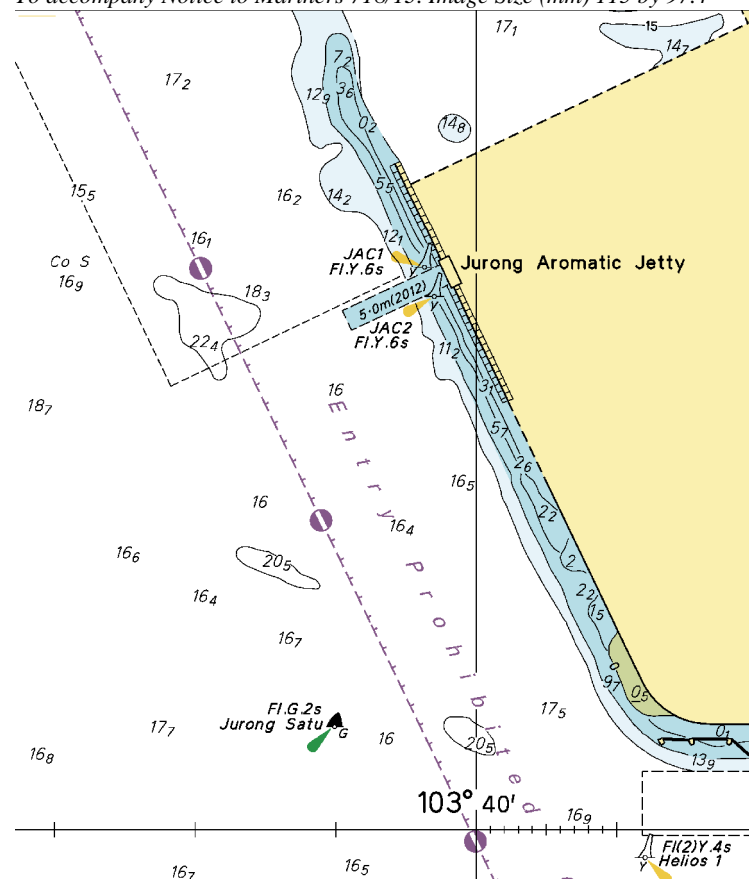
 Updated to Admiralty Notices to Mariners Edition No. 9 of 2013 dated 28th February 2013.

To accompany Notice to Mariners 718/13. Image Size (mm) 114.3 by 96.9



Block for Chart No 4030

To accompany Notice to Mariners 718/13. Image Size (mm) 115 by 97.4



Block for Chart No 4031

MPA ENC DISTRIBUTORS

ENC DISTRIBUTOR	ADDRESS	TELEPHONE/FAX NO./EMAIL/WEBSITE
ChartWorld GmbH ChartWorld Asia Pacific Pte Ltd.	Atlantic Haus, Zirkusweg 1 D-20359 Hamburg Germany Frontech Centre 07-01, 15 Jalan Kilang Barat, Singapore 159357	Tel. No.: +49 40 853 58 6942 Fax No.: +49 40 853 58 6949 Email: sales@chartworld.com Tel No.: +65 6513 3500 Website : http://www.chartworld.com http://www.ecdis-as-a-service.com
DPM (Singapore) Pte Ltd	1 Maritime Square, #09-72 HarbourFront Centre, Singapore 099253	Tel. No.: +65 6270 4060 Fax No.: +65 6276 3858 Email: sales@dpmsingapore.com.sg Website: http://www.dpmsingapore.com.sg
Maritime Information Systems (MARIS) Maritime Information Systems AS (MARIS)	52, Telok Blangah Road #01-06, Telok Blangah House, Singapore 058809 Danholmen 25, 3128 Notteroy, Norway	Tel. No.: +65 6276 1472 Fax No.: +65 6276 1473 Email: : support@maris.sg Website: http://www.maris.no Tel. No.: +47 33 30 42 50 Fax No.: +47 33 30 42 51 Email: : sales@maris.no Website: http://www.maris.no
Motion Smith	15 Jalan Kilang Barat #08-01/05 Frontech Centre, Singapore 159357	Tel. No.: +65 6220 5098 Fax No.: +65 6225 4902 Email: sales@motsmith.com Website: http://www.motsmith.com
Transas Marine Pacific Pte Ltd	Cyber Centre 16 & 18 Jalan Kilang Barat Singapore 159358	Tel. No.: +65 6271 0200 Fax No.: +65 6271 7300 Email: dominic@transas.com.sg Website: http://www.transas.com.sg
Japan Hydrographic Association	Daiichi Sogo Bldg, 6F 1-6-6, Hanedakuko, Ota-ku Tokyo 144-0041, Japan	Tel. No.: +81 3 5708 7093 Fax No.: +81 3 5708 7094 Email: shimizu-6ki@jha.jp Website: http://www.jha.or.jp/en/jha/
Jeppesen Norway AS	P.O Box 212 , N-4371 Egersund, Norway	Tel No.: +47 51 46 4700 Fax No: +47 51 46 4701 Email: license.marine@jeppesen.com Website : http://www.jeppesen.com/marine
PRIMAR STAVANGER	Lervigsveien 36, P.O Box 60, N-4001 Stavanger, Norway	Tel. No.: +47 51 93 9500 Fax No.: +47 51 93 9501 Email: sales@ecc.no Website : http://www.primar.no
The United Kingdom Hydrographic Office	Admiralty Way, Taunton, Somerset, TA1 2DN United Kingdom	Tel. No.: +44 1823 33 7900 Fax No.: +44 1823 28 4077 Emails: ENC.SalesReports@ukho.gov.uk Website: http://www.ukho.gov.uk

Chart Agents for the Maritime and Port Authority of Singapore
Nautical Charts and Publications

Please approach any of the appointed chart agents to purchase the Singapore Nautical Charts and Publications.

CHART AGENT	ADDRESS	TELEPHONE/FAX NO./EMAIL/WEBSITE
Cornes (Singapore) Pte Ltd	10 Anson Road #23-06/6A International Plaza Singapore 079903	Tel. No.: +65 6223 8320 Fax No.: +65 6223 8321 Email: sales9850@cspl.sg Website: http://www.cornes-charts.com
DPM (Singapore) Pte Ltd	1 Maritime Square, #09-72 HarbourFront Centre, Singapore 099253	Tel. No.: +65 6270 4060 Fax No.: +65 6276 3858 Email: sales@dpmsingapore.com.sg Website: http://www.dpmsingapore.com.sg
E.W. Liner Charts & Publications Pte Ltd	102F, Pasir Panjang Road, #08-01, Citilink Warehouse Complex, Singapore 118530	Tel. No.: +65 6323 0773 Fax No.: +65 6323 0775 Email: ewliner@singnet.com.sg Website: http://www.ewliner.com
Kelvin Hughes (Singapore) Pte Ltd	896 Dunearn Road #03-05 Sime Darby Centre Singapore 589472	Tel. No.: +65 6545 9880 Fax No.: +65 6545 8892 Email: leslie.khoo@kelvinhughes.com.sg Website: http://www.kelvinhughes.com
Motion Smith	15 Jalan Kilang Barat #08-01/05 Frontech Centre Singapore 159357	Tel. No.: +65 6220 5098 (After office hours:+65 8163 9993) Fax No.: +65 6225 4902 Email: sales@motsmith.com Website: http://www.motsmith.com

HYDROGRAPHIC NOTE - Instructions

1. Mariners are requested to notify the Chief Hydrographer, Maritime and Port Authority of Singapore, when new or suspected dangers to navigation are discovered, changes are observed in aids to navigation or where corrections to nautical publications may be necessary. Reports, which cannot be confirmed or are lacking in certain details should not be withheld.
2. Any ambiguities of time, positioning and depth should be stressed and any firm expectation of being able to check the information provided on a following voyage should be mentioned.
3. Mariners using satellite position fixing systems, eg. GPS, should provide details of equipment and datum used (where applicable). Where bearings (true or magnetic) are taken visually or by radar to fix a position, it should include more than two objects in order to provide a check on its accuracy. A position may also be defined by bearing and distance from a conspicuous object eg. beacon, lighthouse etc.
4. The note should include a tracing or a digital image of the chart used and the details should be clearly marked.
5. Echo sounders frequently register greater depths than the advertised maximum depth for the equipment, eg. a trace appearing at 50 metres may be in fact be 550 metres or even 1050 metres for equipment whose maximum depth is 500 metres. Erroneous depths caused by 2nd transmission error can usually be recognised by the following:
 - (a) the tracing being weaker than normal for the depth registered,
 - (b) the trace appearing to pass through the transmission line,
 - (c) the feathery nature of the trace.
6. Upon receipt of a hydrographic note, a Notice to Mariners may be issued. The sender's vessel or name is quoted as the source unless the same information is also received in foreign Notices to Mariners.
7. Reports of shoals, uncharted dangers and defects in aids to navigation may also be made to the appropriate Singapore Port Operations Control Centre on VHF Channels 10, 12, 14, 68 or 73.

HYDROGRAPHIC NOTE

To:

Chief Hydrographer
Maritime and Port Authority of Singapore
460 Alexandra Road PSA Building #20-00
Singapore 119963

Tel : (65) 6375 1227
Fax : (65) 6278 7646
Email : hydrographic@mpa.gov.sg

Sender's Contact Details :

Date :

Name of Vessel :

Address of Sender :

Tel : Fax :

Email :

Nature of Observation :

General Location :

Subject :

Position : Lat. Long.

Charts Used :

Date & Time of Observation :

Details :

.....

.....

Attachment :

Equipment Used :

Type of Position Fixing : GPS / DGPS Others :

Type of Echo Sounder :

Name and Signature :

Ship's/Company's Stamp :