



## SINGAPOREAN NOTICES TO MARINERS

---

SECTION	CONTENT	Page
I	Index of Charts & Publications	1
II	New Publications	6
	Notices to Mariners and Chart Corrections	7
	Temporary and Preliminary Notices	8
III	Navigational Information	11
	Amendments to Publications	12
IV	Reprint of Radio Navigational Warnings	13
V	Extract of Admiralty Notices to Mariners for Dual Badged Charts	14

---

**The monthly Notices to Mariners contain corrective information affecting charts published by the Hydrographic Department, Maritime and Port Authority of Singapore. The information contained in these Notices should be updated on the charts affected. Notices under Section II apply only to the particular Singaporean Chart(s) indicated.**

---

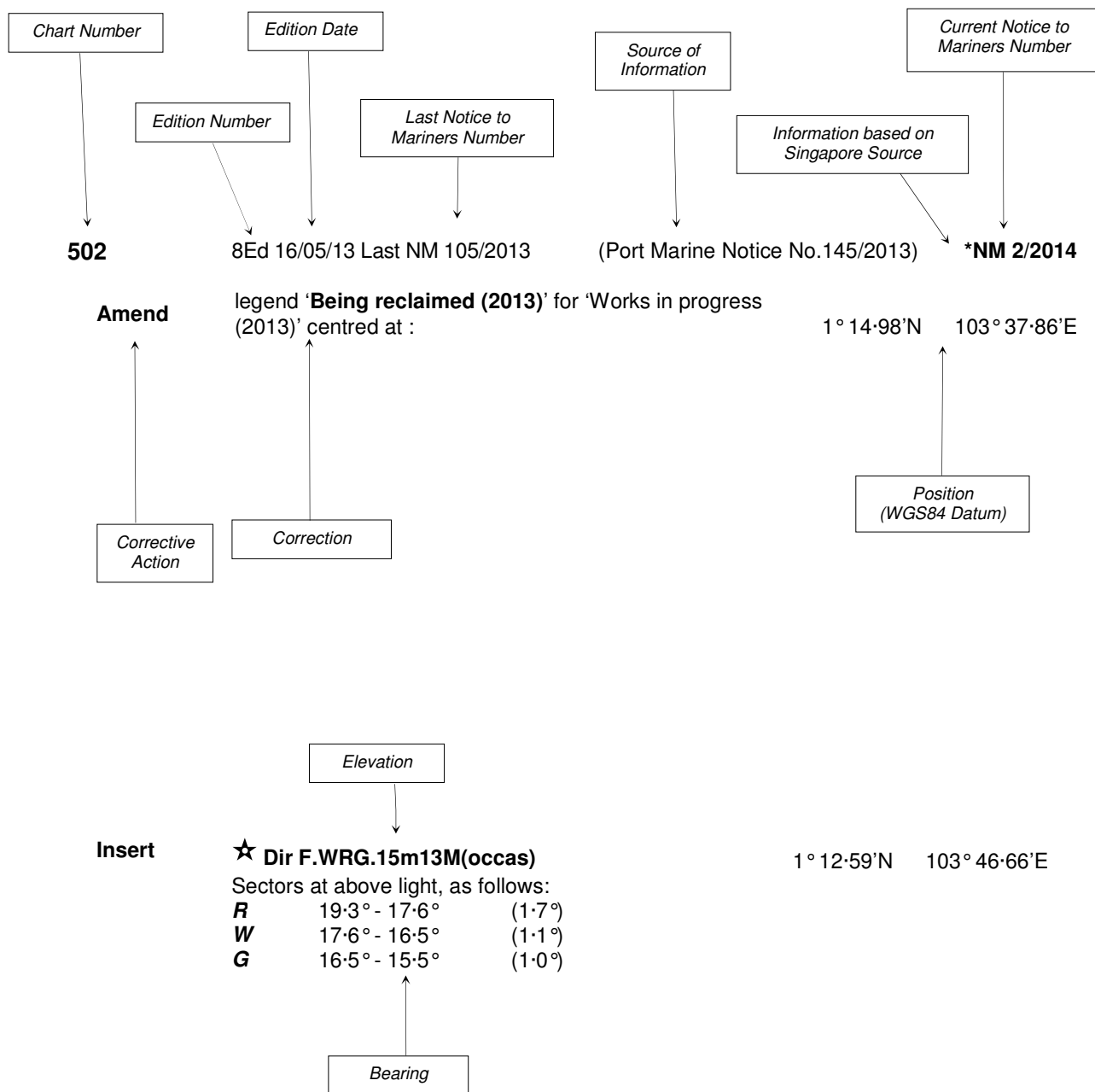
Mariners are requested to notify the Chief Hydrographer, Maritime and Port Authority of Singapore, immediately on the discovery of new dangers or suspected dangers to navigation and of changes or defects in aids to navigation. See Hydrographic Note on back page.

The monthly Singaporean Notices to Mariners can be accessed directly from the MPA website:  
[www.mpa.gov.sg/sites/port\\_and\\_shipping/circulars\\_and\\_notices/singapore\\_notices\\_to\\_mariners\(ntm\).page](http://www.mpa.gov.sg/sites/port_and_shipping/circulars_and_notices/singapore_notices_to_mariners(ntm).page)

Hydrographic Department  
Maritime and Port Authority of Singapore  
460 Alexandra Road  
#20-00 PSA Building  
Singapore 119963  
Tel: (65) 6375 1227  
Fax: (65) 6278 7646

## EXPLANATION OF FORMAT

The elements of a typical chart correction are explained below.



Notes:

- a) Notice to Mariners number followed by:
  - T** indicates a Temporary Notice (eg. \*NM 3T/2014).
  - P** indicates a Preliminary Notice (eg. \*NM 4P/2014).
- b) Bearings are true reckoned clockwise from 000° to 359°; those relating to lights are from seaward.
- c) Heights and elevations are above Mean High Water Springs.

I  
**INDEX OF CHARTS AND PUBLICATIONS**

**INDEX OF AFFECTED CHARTS**

DESCRIPTION	NOTICE NO.	PAGE NO.
Index of Singaporean Charts	-	3
Index of Dual Badged Charts	-	4
Index of Singapore Electronic Navigational Chart (ENC)	-	5
New Edition Singaporean Charts	-	6
Singaporean Chart GSP1/SP1	*17	7
Singaporean Chart 202	18	7
Temporary and Preliminary Notices	19P, *20T, 21T, 22T	8 to 10
Singapore Port Marine Notices	*23	11
Singaporean Print-On-Demand (POD) Charts	*24	11
Amendments to Publications	*25	12
Reprint of Radio Navigational Warnings	-	13
Extract of Admiralty Notices to Mariners for Dual Badged Charts	-	14
Singapore Electronic Navigational Chart (ENC) Distributors	-	15
Chart Agents for the Maritime and Port Authority of Singapore Nautical Charts and Publications	-	16

\*Denotes information are based on Singaporean source.

I  
**INDEX OF CHARTS AND PUBLICATIONS**

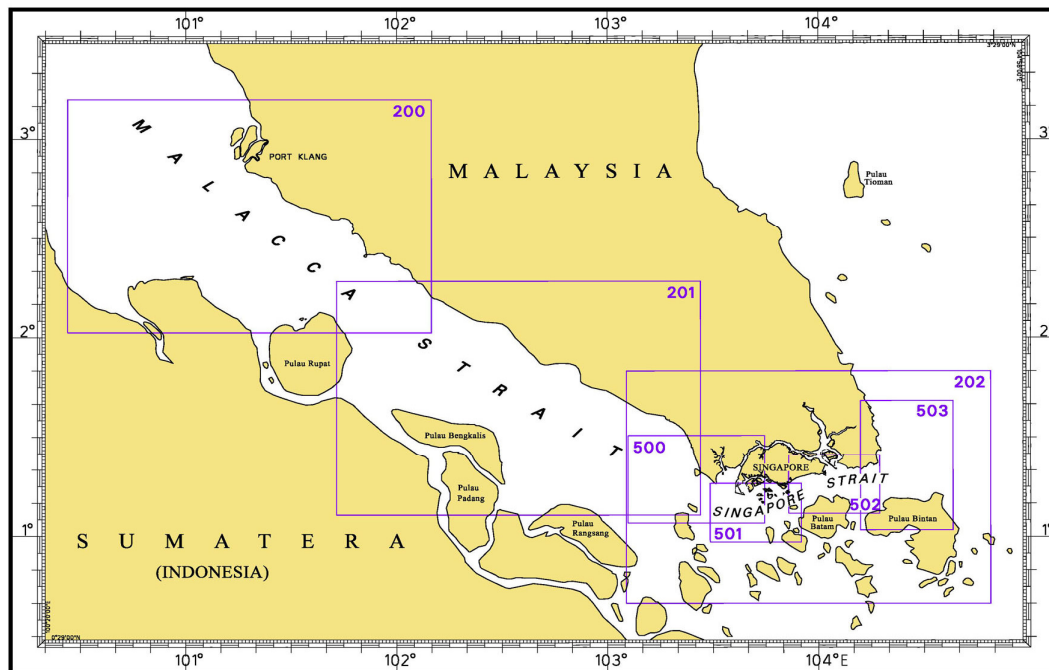
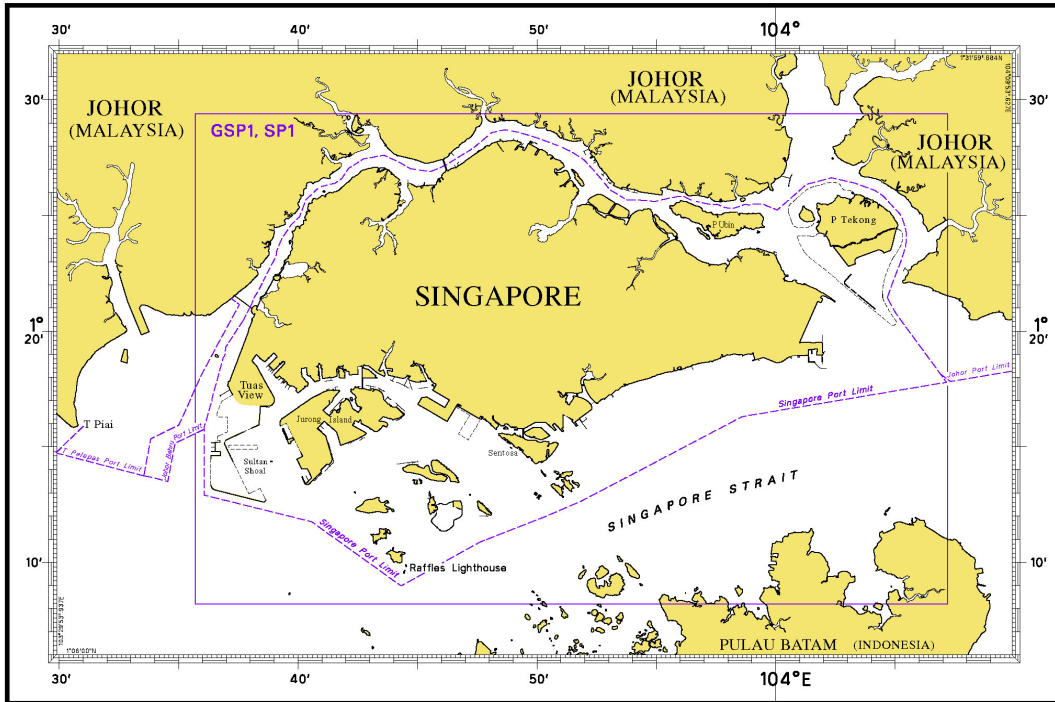
**INDEX OF NOTICES**

NOTICE NO.	DESCRIPTION	PAGE NO.
-	Index of Singaporean Charts	3
-	Index of Dual Badged Charts	4
-	Index of Singapore Electronic Navigational Chart (ENC)	5
-	New Edition Singaporean Charts	6
*17	Singaporean Chart GSP1/SP1	7
18	Singaporean Chart 202	7
19P, *20T, 21T, 22T	Temporary and Preliminary Notices	8 to 10
*23	Singapore Port Marine Notices	11
*24	Singaporean Print-On-Demand (POD) Charts	11
*25	Amendments to Publications	12
-	Reprint of Radio Navigational Warnings	13
-	Extract of Admiralty Notices to Mariners for Dual Badged Charts	14
-	Singapore Electronic Navigational Chart (ENC) Distributors	15
-	Chart Agents for the Maritime and Port Authority of Singapore Nautical Charts and Publications	16

\* Denotes information are based on Singaporean source.

# I INDEX OF CHARTS AND PUBLICATIONS

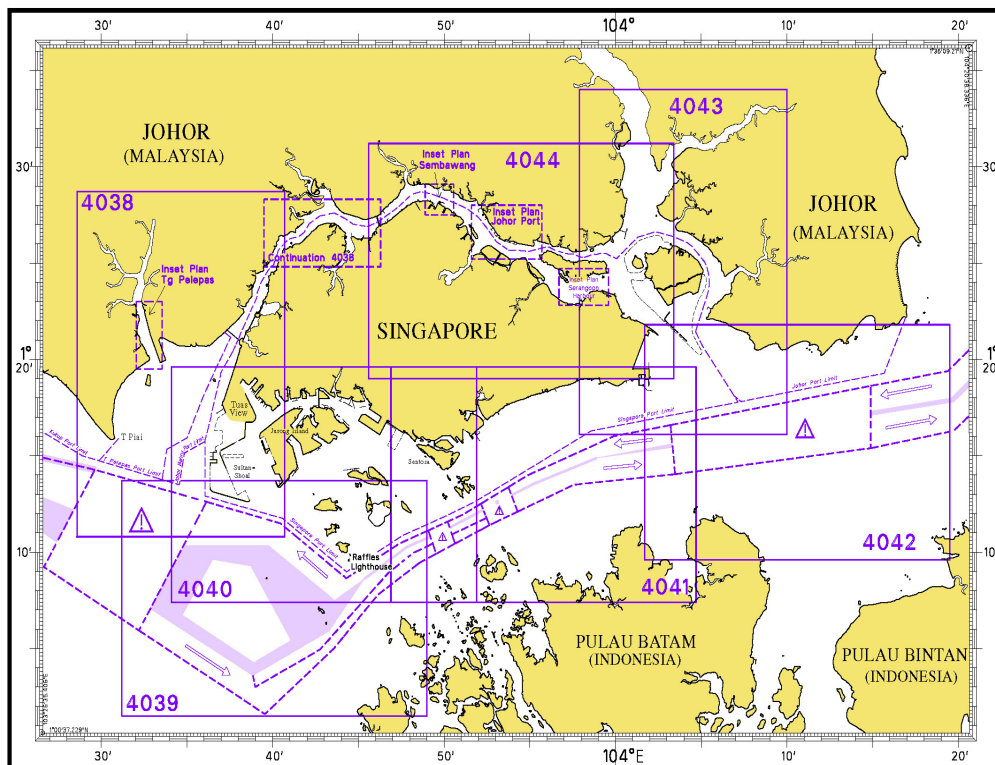
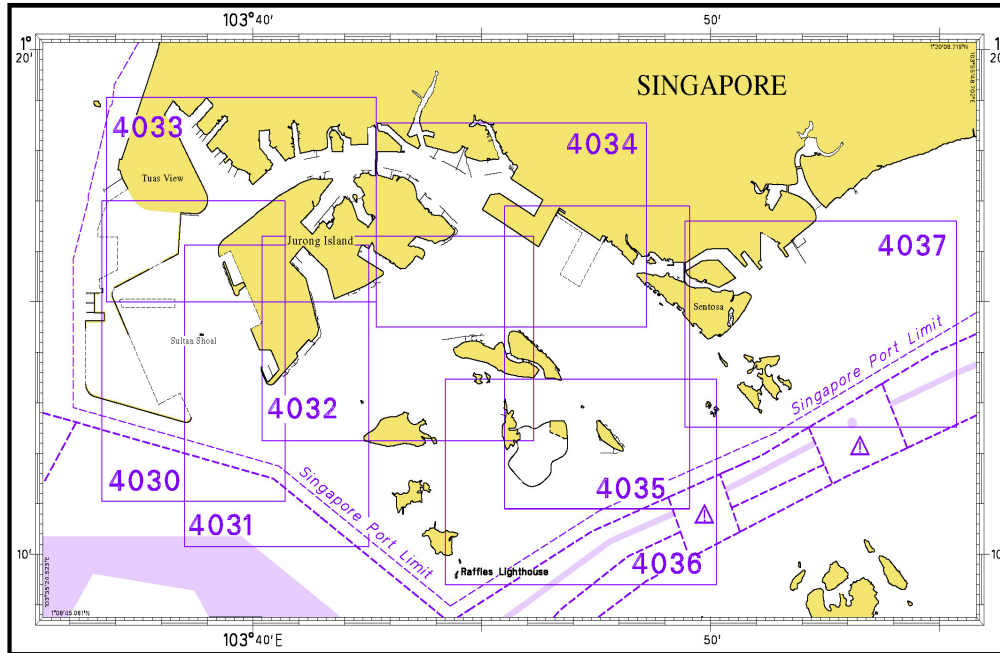
## INDEX OF SINGAPOREAN CHARTS



Notes:  
Updated SINGAPOREAN Charts are available through our Print-On-Demand (POD) Chart Service. For more information, refer to Section III – Navigational Information. These charts can be purchased from our authorised Chart Agents.

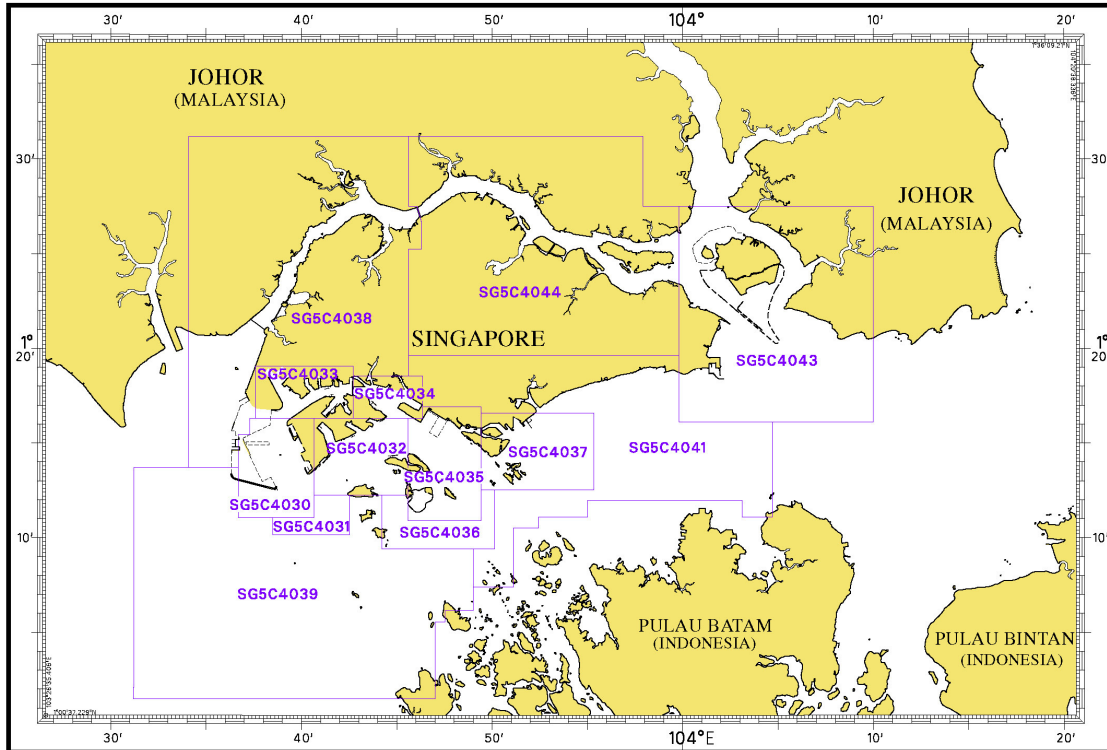
# I INDEX OF CHARTS AND PUBLICATIONS

## INDEX OF DUAL BADGED CHARTS



# I INDEX OF CHARTS AND PUBLICATIONS

## INDEX OF SINGAPORE ELECTRONIC NAVIGATIONAL CHART (ENC)



## COVERAGE OF SINGAPORE ELECTRONIC NAVIGATIONAL CHART (ENC)

ENC Name	ENC Coverage	ENC Edition
SG5C4030	West Jurong Anchorages and Temasek Fairway	5 <sup>th</sup> Edition (3/05/2012)
SG5C4031	Western Approaches to Jurong Island	5 <sup>th</sup> Edition (3/05/2012)
SG5C4032	Sinki Fairway	7 <sup>th</sup> Edition (3/05/2012)
SG5C4033	Tuas Bay, West Jurong Channel and Pesek Basin	5 <sup>th</sup> Edition (3/05/2012)
SG5C4034	East Jurong Channel, Pasir Panjang Terminal and West Keppel Fairway	11 <sup>th</sup> Edition (28/06/2013)
SG5C4035	Western Anchorages, Jong Fairway and Cruise Bay	14 <sup>th</sup> Edition (26/09/2013)
SG5C4036	Raffles Lighthouse to The Sisters	6 <sup>th</sup> Edition (3/05/2012)
SG5C4037	Keppel Harbour, Tanjong Pagar Terminal and Approaches	7 <sup>th</sup> Edition (25/04/2013)
SG5C4038	Johor Strait – Western Part	6 <sup>th</sup> Edition (26/09/2013)
SG5C4039	Western Approaches to Main Strait	5 <sup>th</sup> Edition (3/05/2012)
SG5C4041	Pulau Sebarok to Changi	7 <sup>th</sup> Edition (9/05/2013)
SG5C4043	Kuala Johor and Sungai Johor	9 <sup>th</sup> Edition (29/08/2013)
SG5C4044	Johor Strait – Eastern Part	9 <sup>th</sup> Edition (29/08/2013)

## II NEW PUBLICATIONS

### NEW EDITION SINGAPOREAN CHARTS TO BE PUBLISHED ON 15<sup>TH</sup> APRIL 2014

**Chart Number** : \*GSP1  
**Title** : Anchorages and Aids to Navigation  
**Coverage** : Lat 01° 08' 20 N 01° 29' 40 N  
 Long 103° 35' 70 E 104° 07' 20 E  
**Scale** : 1: 60 000  
**Date Published** : 15<sup>th</sup> April 2014  
**Size of Chart** : 973·9 x 651·2 mm  
**Descriptions** : This new edition includes new changes to aids to navigation, working areas, submarine cables, depth contours from the latest surveys in the vicinity of West of Tuas reclamation, Tuas Anchorages, Temasek Fairway, West Jurong Channel, Pesek and Banyan Basins, Pasir Panjang, Approaches to Pulau Sebarok, South of St John Island, Tanjong Pagar Terminal, Keppel Harbour, Tanah Merah, Pulau Tekong and Sembawang Shipyard.

The existing chart of the same number published on 16<sup>th</sup> May 2013 will be superseded.

\* This chart is provided with a grid area reference.

**Chart Number** : SP1  
**Title** : Anchorages and Aids to Navigation  
**Coverage** : Lat 01° 08' 20 N 01° 29' 40 N  
 Long 103° 35' 70 E 104° 07' 20 E  
**Scale** : 1: 60 000  
**Date Published** : 15<sup>th</sup> April 2014  
**Size of Chart** : 973·9 x 651·2 mm  
**Descriptions** : This new edition includes new changes to aids to navigation, working areas, submarine cables, depth contours from the latest surveys in the vicinity of West of Tuas reclamation, Tuas Anchorages, Temasek Fairway, West Jurong Channel, Pesek and Banyan Basins, Pasir Panjang, Approaches to Pulau Sebarok, South of St John Island, Tanjong Pagar Terminal, Keppel Harbour, Tanah Merah, Pulau Tekong and Sembawang Shipyard.

The existing chart of the same number published on 16<sup>th</sup> May 2013 will be superseded.



## II TEMPORARY AND PRELIMINARY NOTICES

(NM 19P/2014)

### ASIA PACIFIC GATEWAY SUBMARINE CABLE NETWORK (APG) - Post-Lay Inspection and Burial (PLIB)

**Purpose** : The APG submarine cable Post-Lay Inspection and Burial (PLIB) shall be executed within Sector 9 of the Traffic Separation Scheme (TSS) of the Singapore Strait; from the proximities of the Precautionary Area, and in way of the East Bound Traffic Lane, thence to the South China Sea.

The vessel during the PLIB activity shall have her speed over the track at between 00 knot to maximum of 01 knot.

**Work Vessel** : 'MIRAERO'

**Call Sign** : DSRB3

**Date of work** : With effect from 1<sup>st</sup> March 2014 to 31<sup>st</sup> March 2014.

**Duration of work** : The PLIB vessel will require up to this period to complete the Post-Lay Inspection and Burial Works.

**Operating hours** : For Area 02: from 0700 hours to 1900 hours (including Sundays and Public Holidays).

For Area 03: from 0000 hours to 24 hours (including Sundays and Public Holidays).

#### 1. Working Areas

The designated working areas' position co-ordinates (WGS84 Datum) are tabulated below :

Area	From		To		Remarks (Working Hours)
	Latitude (N)	Longitude (E)	Latitude (N)	Longitude (E)	
02	01° 15.469'	104° 10.945'	01° 17.123'	104° 17.223'	Daily, from 0700 to 1900 Hrs
03	01° 17.195'	104° 17.952'	01° 22.664'	104° 25.366'	Daily, from 0000 to 2400 Hrs

#### 2. Post-Lay Inspection and Burial (PLIB) Route Position List (RPL)

The PLIB works has its track's Centre Line position co-ordinates, as follows :

Position	(Co-ordinates: WGS84)		Remarks (Working Hours; at Area 02)
	Latitude (N)	Longitude (E)	
Start Point	01° 15.469'	104° 10.945'	Daily, from 0700 to 1900 Hrs
End Point	01° 15.821'	104° 11.637'	Daily, from 0700 to 1900 Hrs
Start Point	01° 15.816'	104° 12.202'	Daily, from 0700 to 1900 Hrs
End Point	01° 15.815'	104° 12.349'	Daily, from 0700 to 1900 Hrs
Start Point	01° 15.816'	104° 12.767'	Daily, from 0700 to 1900 Hrs
End Point	01° 15.816'	104° 12.840'	Daily, from 0700 to 1900 Hrs
Start Point	01° 15.816'	104° 12.840'	Daily, from 0700 to 1900 Hrs
End Point	01° 17.121'	104° 17.222'	Daily, from 0700 to 1900 Hrs
Start Point	01° 17.121'	104° 17.222'	Daily, from 0700 to 1900 Hrs
End Point	01° 17.123'	104° 17.223'	Daily, from 0700 to 1900 Hrs

**II**  
**TEMPORARY AND PRELIMINARY NOTICES**

Position	(Co-ordinates: WGS84)		Remarks (Working Hours; at Area 03)
	Latitude (N)	Longitude (E)	
Start Point	01° 17.195'	104° 17.952'	Daily, from 0000 to 2400 Hrs
End Point	01° 17.199'	104° 17.955'	Daily, from 0000 to 2400 Hrs
Start Point	01° 17.199'	104° 17.955'	Daily, from 0000 to 2400 Hrs
End Point	01° 17.075'	104° 18.056'	Daily, from 0000 to 2400 Hrs
Start Point	01° 17.075'	104° 18.056'	Daily, from 0000 to 2400 Hrs
End Point	01° 17.712'	104° 20.526'	Daily, from 0000 to 2400 Hrs
Start Point	01° 17.722'	104° 20.620'	Daily, from 0000 to 2400 Hrs
End Point	01° 18.001'	104° 21.329'	Daily, from 0000 to 2400 Hrs
Start Point	01° 17.994'	104° 21.385'	Daily, from 0000 to 2400 Hrs
End Point	01° 18.043'	104° 21.689'	Daily, from 0000 to 2400 Hrs
Start Point	01° 18.373'	104° 22.124'	Daily, from 0000 to 2400 Hrs
End Point	01° 20.343'	104° 23.656'	Daily, from 0000 to 2400 Hrs
Start Point	01° 20.534'	104° 23.990'	Daily, from 0000 to 2400 Hrs
End Point	01° 20.567'	104° 24.040'	Daily, from 0000 to 2400 Hrs
Start Point	01° 22.314'	104° 25.333'	Daily, from 0000 to 2400 Hrs
End Point	01° 22.661'	104° 25.365'	Daily, from 0000 to 2400 Hrs
Start Point	01° 22.661'	104° 25.365'	Daily, from 0000 to 2400 Hrs
End Point	01° 22.664'	104° 25.366'	Daily, from 0000 to 2400 Hrs

3. **Working Corridor :**  
The working corridor's width is 250 metres on either side of the PLIB route centre line; the PLIB working corridor's is therefore 500 metres width.
4. **Charts affected :** GSP1, SP1, 202, 502, 503, 4041 and 4042.
5. **Caution :** Mariners are advised  
 a) to navigate with caution.  
 b) to give a wide berth when approaching the Cable Laying and Burial vessel.

**Source :** HD/DB67/16/2013.  
(Repetition of SNM No. 2/13P/2014 with extension to date of work to 31<sup>st</sup> March 2014)

---

**II**  
**TEMPORARY AND PRELIMINARY NOTICES**

**\*NM 20T/2014 SINGAPORE – Selat Pauh**

1. The isolated danger Gerita Beacon, *Fl(2)10s8m4M* at Monggok Gerita in position 1° 13·42'N 103° 43·48'E had been damaged.
  2. Charts affected: GSP1/SP1, 501, 4032, 4039, 4040
  3. Source: Singapore Radio Navigational Warnings No. TT112
- 

**NM 21T/2014 MALACCA STRAIT – Permatang Sedepa (One Fathom Bank)**

1. An isolated danger light-buoy, *Fl(2)10s*, marking a wreck, has been established in position 2° 56·63'N 100° 59·49'E. (WGS84 Datum).
  2. Charts affected: 200
  3. Source: Admiralty Notice to Mariners No. 6/564(T)/2014
- 

**NM 22T/2014 INDONESIA – Sumatera – Selat Riau**

1. An isolated danger light-buoy, *Q(3)15s*, has been established in position 1° 09·84'N 104° 13·31'E. (WGS84 Datum) marking a wreck.
  2. Charts affected: 202, 502, 503, 4042
  3. Source: Admiralty Notice to Mariners No. 7/653(T)/2014
-

### III NAVIGATIONAL INFORMATION

**\*(NM 23/2014) SINGAPORE PORT MARINE NOTICES**

The following Port Marine Notices have been shortlisted, as they would be of particular interest to mariners.

These notices can be accessed directly from MPA website:  
[www.mpa.gov.sg/sites/port\\_and\\_shipping/circulars\\_and\\_notices/port\\_marine\\_notices.page](http://www.mpa.gov.sg/sites/port_and_shipping/circulars_and_notices/port_marine_notices.page)

<b>PMN No.</b>	<b>Subject</b>
16/2014	Repair works to Breakwater off East Coast Park.
17/2014	Repair works to revetment seawall and drain outfalls off East Coast Park.
18/2014	VHF Channel 17 for communication on tugs and water services.
19/2014	Proposed upgrading of berthing facilities at Technics Offshore Jetty.
22/2014	Soil investigation work on side of Jurong Island, off Temasek Fairway.
23/2014	Soil investigation work off Kuala Johor, Changi East.
24/2014	Repair and upgrading work at Vopka Terminal Jetty No. 2, Pulau Sebarok.

**\*(NM 24/2014) SINGAPOREAN PRINT-ON-DEMAND (POD) CHARTS**

Print-On-Demand (POD) Charts are the most up-to-date paper nautical charts printed for navigational use. These nautical charts are produced in accordance with the International Hydrographic Organisation (IHO) chart specifications. These official nautical charts are continually updated to the latest Notices to Mariners before they are printed and sold to users.

These POD Charts include 200, 201, 202, 500, 501, 502 and 503.

**BENEFITS TO OUR CUSTOMERS**

**Convenience**

Customers need not make numerous hand corrections to the nautical charts before use. In addition the updated POD Charts are more accurate and reliable than offset printed charts with hand corrections.

**Clarity**

Clarity in the presentation of updated information as compared to lithographic printed charts, where in some cases there are several overlapping corrections over existing information.

**Coverage**

The POD Charts cover the Malacca and Singapore Straits, from One Fathom Bank to Horsburgh Lighthouse.

**III**  
**AMENDMENTS TO PUBLICATIONS**

**\*(NM 25/2014) UPDATING OF PUBLICATION "SINGAPORE PORT INFORMATION 2014/2015"**

1. Page 132

**CHARACTERISTICS OF AIDS TO NAVIGATION - RECLAMATION OFF TUAS VIEW**

Delete the following:

<b>Name of Beacon/Buoy</b>	<b>Position Lat. N Long. E Deg Min</b>	<b>Structure Colour &amp; Shape</b>	<b>Light Characteristic</b>	<b>Owner</b>
HVB-11 Beacon	01 17.394 103 37.207	Yellow beacon	Fl.Y.2s	Hyundai - VOBN

Source: HD/HE025/21/2014

2. Page 170 - Item 15

**WHARVES AND BERTHS**

**JURONG ISLAND (EXXONMOBIL ASIA PACIFIC PTE LTD) (1°16.8'N, 103°41.5'E)**

Amend the following:

<b>Berth</b>	<b>Length of Berth</b>	<b>Max LOA</b>	<b>Depth Alongside (Year Surveyed)</b>	<b>Controlling Depth In Approaches</b>
No.6	210m	228m	<b>13.4m (2013)</b>	12.1m

Source: HD/HY code E00105413

---

**IV**  
**REPRINT OF RADIO NAVIGATIONAL WARNINGS**

The following Radio Navigational Warnings have been shortlisted, as they would be of particular interest to mariners.

TT026 (AMENDED ON 07 OCT 13)

TUAS RECLAMATION WORKING AREA AT WESTERN PART OF SINGAPORE PORT ARE MARKED BY BUOYS (REF. PMN: 54/2013, 119/2013).

TT076

RACON DELTA BUOY Q(6)LFI 15S IN POSITION LAT 01°03.781'N LONG 103°38.77'E HAS BEEN REMOVED FOR MAINTENANCE.

TT117

BUFFALO ROCK BUOY FL(2)5S IN THE DEEP WATER ROUTE OF SINGAPORE STRAIT IN POSITION LAT 01°09.85'N LONG 103°48.10'E IS UNLIT.

TT135

RACON TK Q(6) + LFI 15 SECS IN POSITION LAT 01°05.960'N LONG 103°43.210'E IS REPORTED UNLIT.

TT152

SURVEY VESSEL 'MIRAERO' WILL BE CARRYING OUT OPERATIONS ON THE SUBMARINE CABLE IN THE FOLLOWING AREA;

- 1) 01°15.58'N 104°04.55'E TO 01°15.86'N 104°08.75'E
- 2) 01°15.46'N 104°10.94'E TO 01°17.12'N 104°17.22'E
- 3) 01°17.19'N 104°19.95'E TO 01°22.66'N 104°25.36'E

VESSELS ADVISED TO KEEP A LOOKOUT, KEEP CLEAR AND NAVIGATE WITH CAUTION.

TT173

VESSELS IN EAST JOHOR STRAIT ARE ADVISED TO NAVIGATE WITH CAUTION WHEN NEAR THE PROJECT AREAS OFF PULAU TEKONG, CHANGI AND MALANG PAPAN AS SHALLOW WATER AREAS EXIST. VESSELS ARE ADVISED TO KEEP LOOKOUT FOR TUGS AND BARGES NAVIGATING NEAR THE PROJECT AREAS AND PASSENGER FERRIES CROSSING BETWEEN CHANGI AND PULAU TEKONG AND VICINITY OF PASIR GUDANG.

TT961

VESSELS INTENDING TO CROSS THE TRAFFIC SEPARATION SCHEME(TSS) OR PRECAUTIONARY AREAS IN THE SINGAPORE STRAIT DURING THE HOURS OF DARKNESS ARE RECOMMENDED TO DISPLAY THE NIGHT SIGNALS CONSISTING OF 3 ALL-ROUND GREEN LIGHTS IN A VERTICAL LINE WITH EFFECT FROM 1ST JULY 2011 AT 010000UTC (0800SGT) AS DETAILED IN MARITIME AND PORT AUTHORITY OF SINGAPORE'S PORT MARINE CIRCULAR, 02 OF 2011 DATED 30 MAY 2011.

---

ISSUED BY SINGAPORE PORT OPERATIONS CONTROL CENTRE (as at 23<sup>rd</sup> February 2014)

V  
**EXTRACT OF ADMIRALTY NOTICES TO MARINERS  
FOR DUAL BADGED CHARTS**

**These notices can also be accessed directly from UKHO Website:**  
[www.ukho.gov.uk/ProductsandServices/MaritimeSafety/Pages/NMPublic.aspx](http://www.ukho.gov.uk/ProductsandServices/MaritimeSafety/Pages/NMPublic.aspx)

NIL

---

Updated to Admiralty Notices to Mariners Edition No. 9 of 2014 dated 27<sup>th</sup> February 2014.

## MPA ENC DISTRIBUTORS

ENC DISTRIBUTOR	ADDRESS	TELEPHONE/FAX NO./EMAIL/WEBSITE
ChartWorld GmbH	Atlantic Haus, Zirkusweg 1 D-20359 Hamburg Germany	Tel. No.: +49 40 853 58 6942 Fax No.: +49 40 853 58 6949 Email: <a href="mailto:sales@chartworld.com">sales@chartworld.com</a>
ChartWorld Asia Pacific Pte Ltd.	Frontech Centre 07-01, 15 Jalan Kilang Barat, Singapore 159357	Tel No.: +65 6513 3500  Website : <a href="http://www.chartworld.com">http://www.chartworld.com</a> <a href="http://www.ecdis-as-a-service.com">http://www.ecdis-as-a-service.com</a>
DPM (Singapore) Pte Ltd	2 Boon Leat Terrace, #05-02/03 Harbourside 2, Singapore 119844	Tel. No.: +65 6270 4060 Fax No.: +65 6276 3858 Email: <a href="mailto:sales@dpmsingapore.com.sg">sales@dpmsingapore.com.sg</a> Website: <a href="http://www.dpmsingapore.com.sg">http://www.dpmsingapore.com.sg</a>
Maritime Information Systems (MARIS)	52, Telok Blangah Road #01-06, Telok Blangah House, Singapore 058809	Tel. No.: +65 6276 1472 Fax No.: +65 6276 1473 Email: : <a href="mailto:support@maris.sg">support@maris.sg</a> Website: <a href="http://www.maris.no">http://www.maris.no</a>
Maritime Information Systems AS (MARIS)	Danholmen 25, 3128 Notteroy, Norway	Tel. No.: +47 33 30 42 50 Fax No.: +47 33 30 42 51 Email: : <a href="mailto:sales@maris.no">sales@maris.no</a> Website: <a href="http://www.maris.no">http://www.maris.no</a>
Motion Smith	15 Jalan Kilang Barat #08-01/05 Frontech Centre, Singapore 159357	Tel. No.: +65 6220 5098 Fax No.: +65 6225 4902 Email: <a href="mailto:sales@motsmith.com">sales@motsmith.com</a> Website: <a href="http://www.motsmith.com">http://www.motsmith.com</a>
Transas Marine Pacific Pte Ltd	Cyber Centre 16/18 Jalan Kilang Barat Off Jalan Bukit Merah Singapore 159358	Tel. No.: +65 6271 0200 Fax No.: +65 6271 7300 Email: <a href="mailto:navigation.asia@transas.com">navigation.asia@transas.com</a> Website: <a href="http://www.transas.com">http://www.transas.com</a>
Japan Hydrographic Association (Electronic Charts Division)	Daiichi Sogo Bldg, 6F 1-6-6, Hanedakuko, Ota-ku Tokyo 144-0041, Japan	Tel. No.: +81 3 5708 7093 Fax No.: +81 3 5708 7094 Email: <a href="mailto:shimizu-6kj@jha.jp">shimizu-6kj@jha.jp</a> Website: <a href="http://www.jha.or.jp/en/jha/">http://www.jha.or.jp/en/jha/</a>
Jeppesen Norway AS	P.O Box 212 , N-4371 Egersund, Norway	Tel No.: +47 51 46 4700 Fax No: +47 51 46 4701 Email: <a href="mailto:license.marine@jeppesen.com">license.marine@jeppesen.com</a> Website : <a href="http://www.jeppesen.com/marine">http://www.jeppesen.com/marine</a>
PRIMAR STAVANGER	Lervigsveien 36, P.O Box 60, N-4001 Stavanger, Norway	Tel. No.: +47 51 93 9500 Fax No.: +47 51 93 9501 Email: <a href="mailto:sales@ecc.no">sales@ecc.no</a> Website : <a href="http://www.primar.no">http://www.primar.no</a>
The United Kingdom Hydrographic Office	Admiralty Way, Taunton, Somerset, TA1 2DN United Kingdom	Tel. No.: +44 1823 33 7900 Fax No.: +44 1823 28 4077 Emails: <a href="mailto:ENC.SalesReports@ukho.gov.uk">ENC.SalesReports@ukho.gov.uk</a> Website: <a href="http://www.ukho.gov.uk">http://www.ukho.gov.uk</a>

**Chart Agents for the Maritime and Port Authority of Singapore**  
**Nautical Charts and Publications**

Please approach any of the appointed chart agents to purchase the Singapore Nautical Charts and Publications.

<b>CHART AGENT</b>	<b>ADDRESS</b>	<b>TELEPHONE/FAX NO./EMAIL/WEBSITE</b>
Cornes (Singapore) Pte Ltd	10 Anson Road #23-06/6A International Plaza Singapore 079903	Tel. No.: +65 6223 8320 Fax No.: +65 6223 8321 Email: sales9850@cspl.sg Website: <a href="http://www.cornes-charts.com">http://www.cornes-charts.com</a>
DPM (Singapore) Pte Ltd	2 Boon Leat Terrace, #05-02/03 Harbourside 2, Singapore 119844	Tel. No.: +65 6270 4060 Fax No.: +65 6276 3858 Email: sales@dpmsingapore.com.sg Website: <a href="http://www.dpmsingapore.com.sg">http://www.dpmsingapore.com.sg</a>
E.W. Liner Charts & Publications Pte Ltd	102F, Pasir Panjang Road, #08-01, Citilink Warehouse Complex, Singapore 118530	Tel. No.: +65 6323 0773 Fax No.: +65 6323 0775 Email: ewliner@singnet.com.sg Website: <a href="http://www.ewliner.com">http://www.ewliner.com</a>
Kelvin Hughes (Singapore) Pte Ltd	896 Dunearn Road #03-05 Sime Darby Centre Singapore 589472	Tel. No.: +65 6545 9880 Fax No.: +65 6545 8892 Email: leslie.khoo@kelvinhughes.com.sg Website: <a href="http://www.kelvinhughes.com">http://www.kelvinhughes.com</a>
Motion Smith	15 Jalan Kilang Barat #08-01/05 Frontech Centre Singapore 159357	Tel. No.: +65 6220 5098 (After office hours:+65 8163 9993) Fax No.: +65 6225 4902 Email: sales@motsmith.com Website: <a href="http://www.motsmith.com">http://www.motsmith.com</a>

## HYDROGRAPHIC NOTE - Instructions

1. Mariners are requested to notify the Chief Hydrographer, Maritime and Port Authority of Singapore, when new or suspected dangers to navigation are discovered, changes are observed in aids to navigation or where corrections to nautical publications may be necessary. Reports, which cannot be confirmed or are lacking in certain details should not be withheld.
2. Any ambiguities of time, positioning and depth should be stressed and any firm expectation of being able to check the information provided on a following voyage should be mentioned.
3. Mariners using satellite position fixing systems, eg. GPS, should provide details of equipment and datum used (where applicable). Where bearings (true or magnetic) are taken visually or by radar to fix a position, it should include more than two objects in order to provide a check on its accuracy. A position may also be defined by bearing and distance from a conspicuous object eg. beacon, lighthouse etc.
4. The note should include a tracing or a digital image of the chart used and the details should be clearly marked.
5. Echo sounders frequently register greater depths than the advertised maximum depth for the equipment, eg. a trace appearing at 50 metres may be in fact be 550 metres or even 1050 metres for equipment whose maximum depth is 500 metres. Erroneous depths caused by 2nd transmission error can usually be recognised by the following:
  - (a) the tracing being weaker than normal for the depth registered,
  - (b) the trace appearing to pass through the transmission line,
  - (c) the feathery nature of the trace.
6. Upon receipt of a hydrographic note, a Notice to Mariners may be issued. The sender's vessel or name is quoted as the source unless the same information is also received in foreign Notices to Mariners.
7. Reports of shoals, uncharted dangers and defects in aids to navigation may also be made to the appropriate Singapore Port Operations Control Centre on VHF Channels 10, 12, 14, 68 or 73.

**HYDROGRAPHIC NOTE**

To:

Chief Hydrographer  
Maritime and Port Authority of Singapore  
460 Alexandra Road PSA Building #20-00  
Singapore 119963

Tel : (65) 6375 1227  
Fax : (65) 6278 7646  
Email : [hydrographic@mpa.gov.sg](mailto:hydrographic@mpa.gov.sg)

**Sender's Contact Details** :

Date : .....

Name of Vessel : .....

Address of Sender : .....

Tel : ..... Fax : .....

Email : .....

**Nature of Observation** :

General Location : .....

Subject : .....

Position : Lat. .... Long. ....

Charts Used : .....

Date & Time of Observation : .....

Details : .....

.....

.....

.....

Attachment : .....

**Equipment Used** :

Type of Position Fixing : ..... GPS / DGPS ..... Others : .....

Type of Echo Sounder : .....

Name and Signature : .....

Ship's/Company's Stamp : .....