



SINGAPOREAN NOTICES TO MARINERS

SECTION	CONTENT	Page
I	Index of Charts & Publications	1
II	New Publications	9
	Notices to Mariners and Chart Corrections	10
	Temporary and Preliminary Notices	11
III	Navigational Information	12
	Amendments to Publications	13
IV	Reprint of Radio Navigational Warnings	14
V	Extract of Admiralty Notices to Mariners for Dual-Badged Charts	15

The monthly Notices to Mariners contain corrective information affecting charts published by the Hydrographic Department, Maritime and Port Authority of Singapore. The information contained in these Notices should be updated on the charts affected. Notices under Section II apply only to the particular Singaporean Chart(s) indicated.

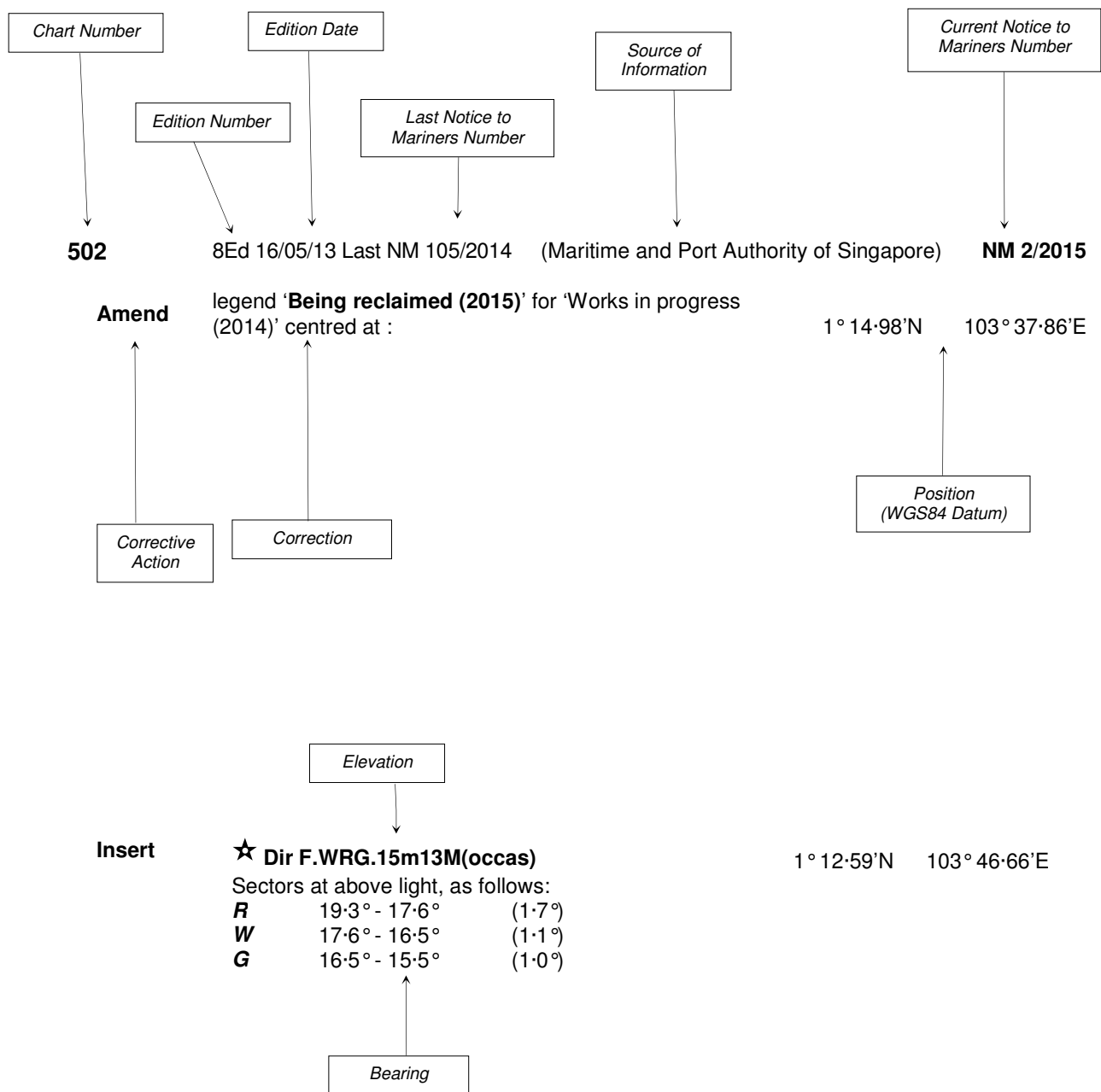
Mariners are requested to notify the Chief Hydrographer, Maritime and Port Authority of Singapore, immediately on the discovery of new dangers or suspected dangers to navigation and of changes or defects in aids to navigation. See Hydrographic Note on back page.

The monthly Singaporean Notices to Mariners can be accessed directly from the MPA website:
[http://www.mpa.gov.sg/sites/port_and_shipping/circulars_and_notices/singapore_notices_to_mariners\(ntm\).page](http://www.mpa.gov.sg/sites/port_and_shipping/circulars_and_notices/singapore_notices_to_mariners(ntm).page)

Hydrographic Department
Maritime and Port Authority of Singapore
7B Keppel Road
#20-00 Tanjong Pagar Complex
Singapore 089055
Tel: (65) 6325 2027
Fax: (65) 6226 1076
Email: hydrographic@mpa.gov.sg

EXPLANATION OF FORMAT

The elements of a typical chart correction are explained below.



Notes:

- Notice to Mariners number followed by:
 - T** indicates a Temporary Notice (eg. **NM 3T/2015**).
 - P** indicates a Preliminary Notice (eg. **NM 4P/2015**).
- Bearings are true reckoned clockwise from 000° to 359°; those relating to lights are from seaward.
- Heights and elevations are above Mean High Water Springs.

I
INDEX OF CHARTS AND PUBLICATIONS

INDEX OF AFFECTED CHARTS

DESCRIPTION	NOTICE NO.	PAGE NO.
Index of Singaporean Charts	-	3, 4
Index of Dual-Badged Charts	-	5 to 7
Index of Singapore Electronic Navigational Chart (ENC)	-	8
New Edition Singaporean Charts	-	9
Singaporean Chart GSP1/SP1	*23, *24	10
Singaporean Chart 202	25	10
Singaporean Chart 501	25	10
Temporary and Preliminary Notices	*26T	11
Singapore Port Marine Notices	*27	12
Singaporean Print-On-Demand (POD) Charts	*28	12
Amendments to Publications	*29	13, 14
Reprint of Radio Navigational Warnings	-	15
Extract of Admiralty Notices to Mariners for Dual-Badged Charts	-	16 to 18
Singapore Electronic Navigational Chart (ENC) Distributors	-	19
Chart Distributors for the Maritime and Port Authority of Singapore Nautical Charts and Publications	-	20

*Source: Maritime and Port Authority of Singapore

I
INDEX OF CHARTS AND PUBLICATIONS

INDEX OF NOTICES

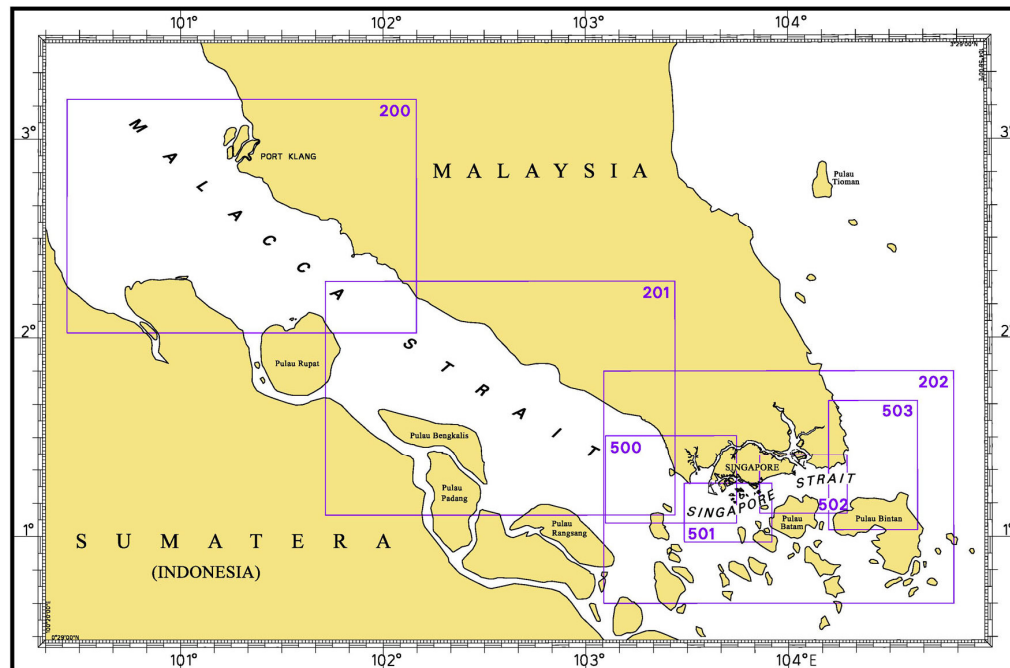
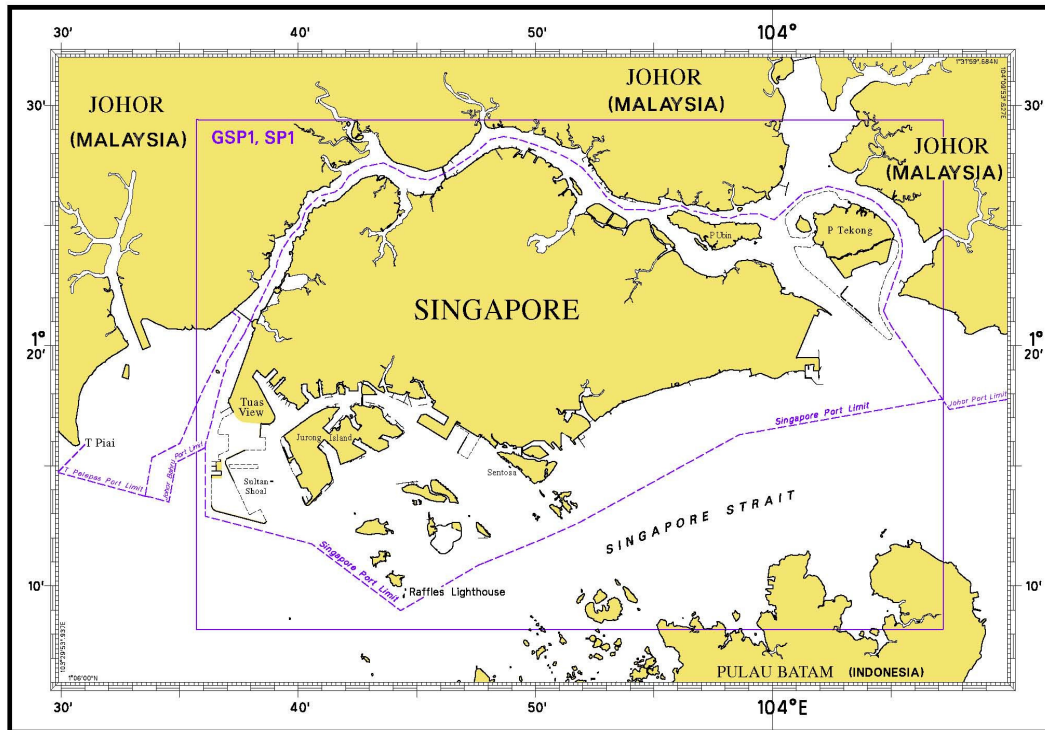
NOTICE NO.	DESCRIPTION	PAGE NO.
-	Index of Singaporean Charts	3, 4
-	Index of Dual-Badged Charts	5 to 7
-	Index of Singapore Electronic Navigational Chart (ENC)	8
-	New Edition Singaporean Charts	9
*23, *24	Singaporean Chart GSP1/SP1	10
25	Singaporean Chart 202	10
25	Singaporean Chart 501	10
*26T	Temporary and Preliminary Notices	11
*27	Singapore Port Marine Notices	12
*28	Singaporean Print-On-Demand (POD) Charts	12
*29	Amendments to Publications	13, 14
-	Reprint of Radio Navigational Warnings	15
-	Extract of Admiralty Notices to Mariners for Dual-Badged Charts	16 to 18
-	Singapore Electronic Navigational Chart (ENC) Distributors	19
-	Chart Distributors for the Maritime and Port Authority of Singapore Nautical Charts and Publications	20

* Source: Maritime and Port Authority of Singapore

I

INDEX OF CHARTS AND PUBLICATIONS

INDEX OF SINGAPOREAN CHARTS



Notes:

Updated Singaporean Charts are available through our Print-On-Demand (POD) Chart Service. For more information, refer to Section III – Navigational Information. These charts can be purchased from our Chart Distributors.

I
INDEX OF CHARTS AND PUBLICATIONS

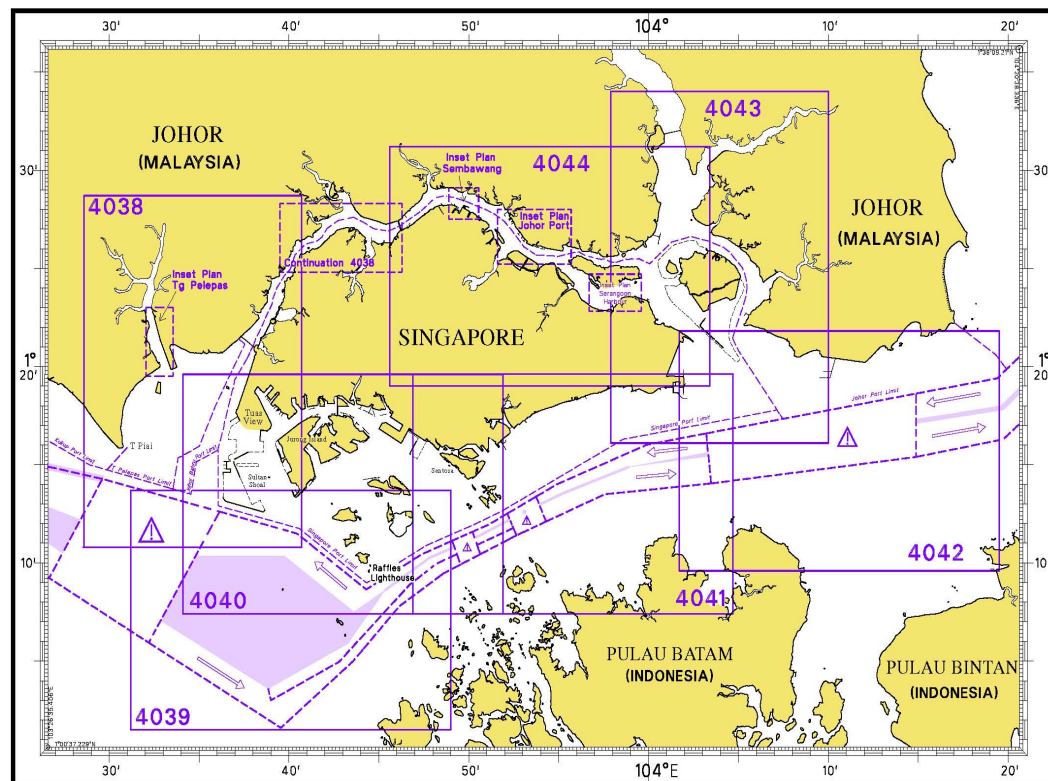
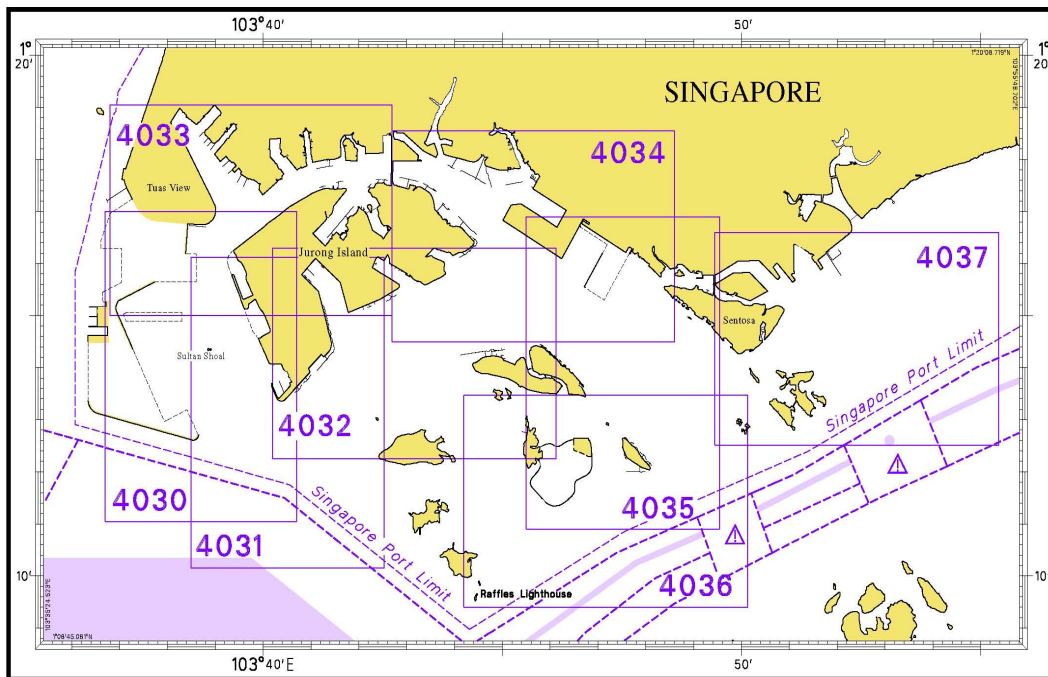
SINGAPOREAN CHARTS

Chart No.	Chart Title	Scale 1:	Date Published of Latest Edition
GSP1	Anchorage and Aids to Navigation (with Area Reference)	60 000	02/03/2015
SP1	Anchorage and Aids to Navigation	60 000	02/03/2015
200	Malacca Strait - Port Klang to Tanjung Keling	200 000	22/09/2011
201	Malacca Strait - Tanjung Keling to Western Entrance of Singapore Strait	200 000	15/08/2014
202	Singapore Strait	200 000	26/09/2013
500	Malacca and Singapore Straits – Pulau Pisang to Raffles Lighthouse	75 000	26/09/2013
501	Singapore Strait – Western Part	50 000	03/05/2012
502	Singapore Strait - Eastern Part	50 000	03/05/2012
503	South China Sea - Eastern Approaches and Entrance to Singapore Strait	75 000	15/08/2014
-	Charts for Small Craft – Singapore Strait & Adjacent Waterways	10 000 to 200 000	02/01/2015
1	<p>Symbols Abbreviations Terms and S-57 Objects used on Singapore Nautical and Electronic Navigational Charts.</p> <p>Available at MPA website http://www.mpa.gov.sg/sites/global_navigation/publications/chart1.page</p>	-	28/07/2011

I

INDEX OF CHARTS AND PUBLICATIONS

INDEX OF DUAL-BADGED CHARTS



I
INDEX OF CHARTS AND PUBLICATIONS

DUAL- BADGED CHARTS

Chart No.	Chart Title	Scale 1:	Date Published of Latest Edition
4030	Port of Singapore West Jurong Anchorages and Temasek Fairway	10 000	15/05/2014
4031	Port of Singapore Western Approaches to Jurong Island	10 000	15/05/2014
4032	Port of Singapore Sinki Fairway	10 000	15/05/2014
4033	Port of Singapore Tuas Bay, West Jurong Channel and Pesek Basin	10 000	15/05/2014
4034	Port of Singapore East Jurong Channel, Pasir Panjang Terminal and West Keppel Fairway	10 000	28/08/2014
4035	Port of Singapore Western Anchorages, Jong Fairway and Cruise Bay	10 000	28/08/2014
4036	Port of Singapore Raffles Lighthouse to The Sisters	10 000	25/04/2013
4037	Port of Singapore Keppel Harbour, Tanjong Pagar Terminal and Approaches	10 000	25/04/2013
4038	Malaysia and Singapore Johor Strait – Western Part	30 000	26/09/2013
4039	Indonesia, Singapore and Malaysia Western Approaches to Main Strait	30 000	24/04/2014
4040	Singapore, Indonesia and Malaysia Tuas View to Pulau Sakijang Bendera (S. John's Island)	30 000	14/08/2014
4041	Singapore and Indonesia Pulau Sebarok to Changi	30 000	14/08/2014

I

INDEX OF CHARTS AND PUBLICATIONS

DUAL- BADGED CHARTS

Chart No.	Chart Title	Scale 1:	Date Published of Latest Edition
4042	Indonesia, Malaysia and Singapore Changi to Pulau Mungging and Tanjung Buntan to Tanjung Tondang	30 000	24/04/2014
4043	Malaysia and Singapore Kuala Johor and Sungai Johor	30 000	14/08/2014
4044	Singapore and Malaysia Johor Strait - Eastern Part	30 000	14/08/2014

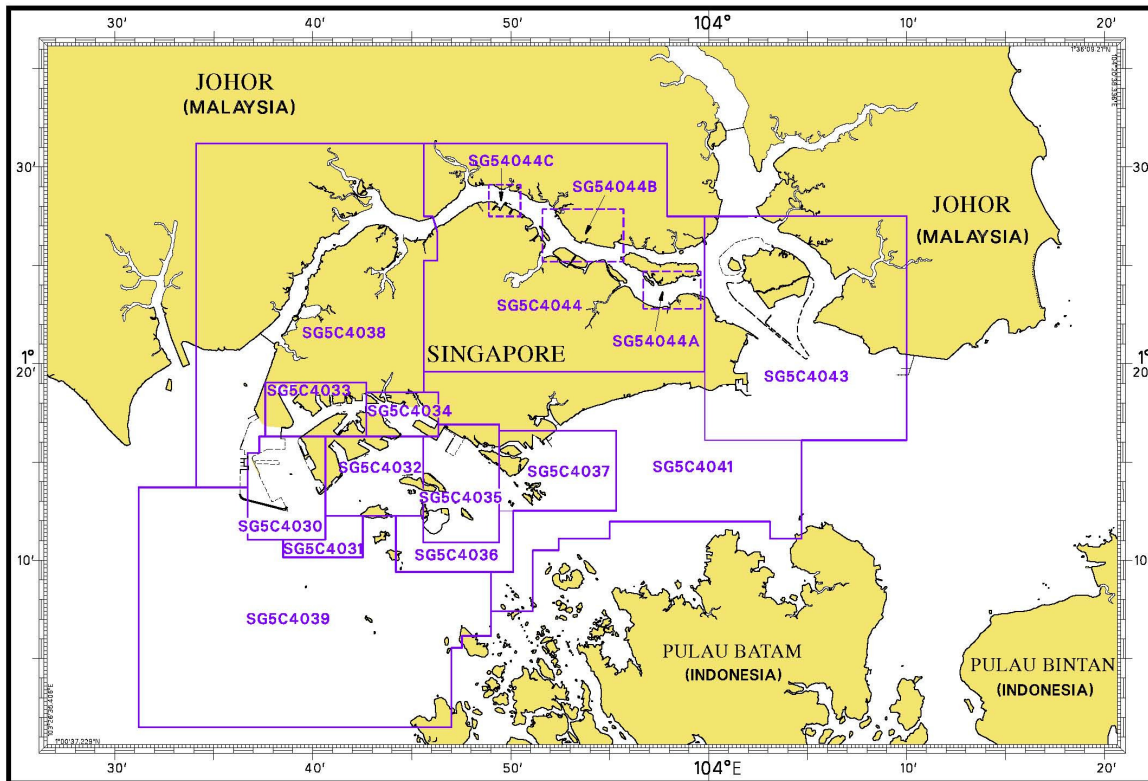
SINGAPOREAN PUBLICATIONS

Item	Title
1	Singapore Tide Tables Year 2015
2	Singapore Port Information 2014/2015

I

INDEX OF CHARTS AND PUBLICATIONS

INDEX OF SINGAPORE ELECTRONIC NAVIGATIONAL CHART (ENC)



SINGAPORE ELECTRONIC NAVIGATIONAL CHART (ENC)

ENC Name	ENC Coverage	ENC Edition
SG5C4030	West Jurong Anchorages and Temasek Fairway	7 th Edition (1/09/2014)
SG5C4031	Western Approaches to Jurong Island	7 th Edition (1/09/2014)
SG5C4032	Sinki Fairway	9 th Edition (1/09/2014)
SG5C4033	Tuas Bay, West Jurong Channel and Pesek Basin	7 th Edition (1/09/2014)
SG5C4034	East Jurong Channel, Pasir Panjang Terminal and West Keppel Fairway	12 th Edition (1/09/2014)
SG5C4035	Western Anchorages, Jong Fairway and Cruise Bay	15 th Edition (1/09/2014)
SG5C4036	Raffles Lighthouse to The Sisters	8 th Edition (1/09/2014)
SG5C4037	Keppel Harbour, Tanjong Pagar Terminal and Approaches	8 th Edition (1/09/2014)
SG5C4038	Johor Strait – Western Part	7 th Edition (1/09/2014)
SG5C4039	Western Approaches to Main Strait	7 th Edition (1/09/2014)
SG5C4041	Pulau Sebarok to Changi	8 th Edition (1/09/2014)
SG5C4043	Kuala Johor	10 th Edition (1/09/2014)
SG5C4044	Johor Strait – Eastern Part	10 th Edition (1/09/2014)
SG54044A	Serangoon Harbour	1 st Edition (1/09/2014)
SG54044B	Pelabuhan Johor (Johor Port)	1 st Edition (1/09/2014)
SG54044C	Sembawang	1 st Edition (1/09/2014)

II NEW PUBLICATIONS

NEW EDITION SINGAPOREAN CHARTS TO BE PUBLISHED ON 2ND MARCH 2015

Chart Number : *GSP1
Title : Anchorages and Aids to Navigation
Coverage : Lat 01° 08' 20 N 01° 29' 40 N
 Long 103° 35' 70 E 104° 07' 20 E
Scale : 1: 60 000
Date Published : 2nd March 2015
Size of Chart : 973·9 x 651·2 mm
Descriptions : This new edition includes new changes to aids to navigation, working areas, submarine cables, depth contours from the latest surveys in the vicinity of west of Tuas View reclamation, West Johor Strait, Temasek Fairway, Sinki Fairway, Selat Pandan, West Keppel Fairway, East Jurong Channel, Pasir Panjang, west of Sentosa, south of St John Island, Eastern Fairway, Cable area at Tanah merah, Pulau Tekong and approaches to Sembawang Shipyard.

The existing chart of the same number published on 15th April 2014 will be superseded.

* This chart is provided with a grid area reference.

Chart Number : SP1
Title : Anchorages and Aids to Navigation
Coverage : Lat 01° 08' 20 N 01° 29' 40 N
 Long 103° 35' 70 E 104° 07' 20 E
Scale : 1: 60 000
Date Published : 2nd March 2015
Size of Chart : 973·9 x 651·2 mm
Descriptions : This new edition includes new changes to aids to navigation, working areas, submarine cables, depth contours from the latest surveys in the vicinity of west of Tuas View reclamation, West Johor Strait, Temasek Fairway, Sinki Fairway, Selat Pandan, West Keppel Fairway, East Jurong Channel, Pasir Panjang, west of Sentosa, south of St John Island, Eastern Fairway, Cable area at Tanah merah, Pulau Tekong and approaches to Sembawang Shipyard.

The existing chart of the same number published on 15th April 2014 will be superseded.

II NOTICES TO MARINERS AND CHART CORRECTIONS

GSP1/SP1 10Ed 2/03/15 New Edition (Maritime and Port Authority of Singapore) **NM 23/2015**

Insert  **FI(2+1)G.10s Merawang** 1°19'30"N 103°37'01"E

(Maritime and Port Authority of Singapore) **NM 24/2015**

Replace name *W3* with name ***E Cyrene*** 1°15'66"N 103°45'69"E
name *W4* with name ***Butir*** 1°14'62"N 103°43'70"E

202 7Ed 6/09/13 Last NM 17/2015 (Admiralty Notice No. 9/1055/2015) **NM 25/2015**

Insert  **Fl. Y. 8s** 1°06'70"N 103°46'30"E

501 6Ed 3/05/12 Last NM 17/2015 (Admiralty Notice No. 9/1055/2015) **NM 25/2015**

Insert  **Fl. Y. 8s** 1°06'70"N 103°46'30"E

II TEMPORARY AND PRELIMINARY NOTICES

GSP1/SP1 10Ed 2/03/15 New Edition (Maritime and Port Authority of Singapore) **NM 26T/2015**

Insert



(a)

1°15'94"N

103°53'77'E



FI(2)10s adjacent to

(a) above

502 6Ed 3/05/12 Last NM 1/2015 (Maritime and Port Authority of Singapore) **NM 26T/2015**

Insert



(a)

1°15'94"N

103°53'77'E



FI(2)10s adjacent to

(a) above

III NAVIGATIONAL INFORMATION

***(NM 27/2015) SINGAPORE PORT MARINE NOTICES**

The Port Marine Notices shortlisted below would be of particular interest to mariners. Details and complete list of Port Marine Notices are available at this link:

http://www.mpa.gov.sg/sites/port_and_shipping/circulars_and_notices/port_marine_notices.page

PMN No.	Subject
17/2015	Installation of buoys and management of allocated dumping areas north of West Jurong Anchorage, off Temasek Fairway.
18/2015	Dredging work off south-east of Tuas View.
20/2015	Transport of material from PPT Phase 3 and 4 working area to sand stockpile area at Tuas adjoining F2.

***(NM 28/2015) SINGAPOREAN PRINT-ON-DEMAND (POD) CHARTS**

Print-On-Demand (POD) Charts are the most up-to-date paper nautical charts printed for navigational use. These nautical charts are produced in accordance with the International Hydrographic Organisation (IHO) chart specifications. These official nautical charts are continually updated to the latest Notices to Mariners before they are printed and sold to users.

These POD Charts include 200, 201, 202, 500, 501, 502 and 503.

BENEFITS TO OUR CUSTOMERS

Convenience

Customers need not make numerous hand corrections to the nautical charts before use. In addition the updated POD Charts are more accurate and reliable than offset printed charts with hand corrections.

Clarity

Clarity in the presentation of updated information as compared to lithographic printed charts, where in some cases there are several overlapping corrections over existing information.

Coverage

The POD Charts cover the Malacca and Singapore Straits, from One Fathom Bank to Horsburgh Lighthouse.

*Source: Maritime and Port Authority of Singapore

III AMENDMENTS TO PUBLICATIONS

*(NM 29/2015) UPDATING OF PUBLICATION "SINGAPORE PORT INFORMATION 2014/2015"

1. **CHARACTERISTICS OF AIDS TO NAVIGATION**

Page 139

EAST JURONG CHANNEL

Amend W3 Buoy to the following:

Name of Beacon/Buoy	Position Lat. N Long. E Deg Min	Structure Colour & Shape	Light Characteristic	Owner
E Cyrene Buoy	01° 15.611' 103° 45.885'	Red white vertical stripe spherical	LFl.W.10s	MPA

2. Page 142

SINKI FAIRWAY

Amend W4 Buoy to the following:

Name of Beacon/Buoy	Position Lat. N Long. E Deg Min	Structure Colour & Shape	Light Characteristic	Owner
Butir Buoy	01° 14.636' 103° 43.828'	Green Conical	Fl.G.5s	MPA

3. Page 132

WEST JOHOR STRAIT

Insert the following:

Name of Beacon/Buoy	Position Lat. N Long. E Deg Min	Structure Colour & Shape	Light Characteristic	Owner
Merawang Buoy	01° 19.297' 103° 37.014'	Green Conical with one red horizontal band	Fl(2+1)G.10s	DHI

4. Page 173

WHARVES AND BERTHS

JURONG ISLAND (PETROCHEMICAL CORPORATION OF SINGAPORE)

(1°15.9'N, 103°43.0'E)

Amend the following:

Berth	Length of Berth	Max LOA	Depth Alongside (Year Surveyed)	Controlling Depth In Approaches
No.1 (Unloading)	41m	-	1.7m (2014)	2.5m
No.2 (Solids)	165m	165m	6.4m (2014)	9.6m
No.3 (Liquid)	130m	130m	10.2m (2014)	11.3m
No.4 (Liquid)	140m	140m	12.1m (2014)	10.9m
No.5 (Liquid)	140m	140m	12.0m (2014)	10.9m
Barge Wharf (Unloading)	117m	100m	3.0m (2014)	3.0m

III AMENDMENTS TO PUBLICATIONS

5. Page 181

JURONG ISLAND (VOPAK TERMINALS SINGAPORE PTE LTD)
(1°15.5'N, 103°42.6'E)

Amend the following:

Berth	Length of Berth	Max LOA	Depth Alongside (Year Surveyed)	Controlling Depth In Approaches
1A	151m	126m	11.0m (2014)	7.8m

6. Page 182

LOYANG JETTY (TOLL OFFSHORE PETROLEUM SERVICES PTE LTD)
(1°23.1'N, 103°58.1'E)

Amend the following:

Berth	Length of Berth	Depth Alongside (Year Surveyed)	Controlling Depth In Approaches
1	60m	6.8m (2014)	6.8m
2	70m	7.2m (2014)	6.8m
2A	45m	8.4m (2014)	6.8m
3	50m	6.8m (2014)	7.0m
3A	45m	8.0m (2014)	7.0m
4	50m	6.3m (2014)	7.0m
5	50m	6.0m (2014)	7.0m
6	45m	6.2m (2014)	7.0m
7	50m	5.7m (1981)	5.0m
8	50m	5.7m (1981)	5.0m
9	120m	7.0m (2011)	6.8m
A	85m	6.7m (2011)	6.8m
B	72m	6.4m (2014)	6.8m
C	72m	6.2m (2014)	6.8m

*Source: Maritime and Port Authority of Singapore

IV REPRINT OF RADIO NAVIGATIONAL WARNINGS

The following Radio Navigational Warnings have been shortlisted, as they would be of particular interest to mariners.

TT175

VESSELS IN EAST JOHOR STRAIT ARE ADVISED TO NAVIGATE WITH CAUTION WHEN NEAR THE PROJECT AREAS OFF PULAU TEKONG, CHANGI AND MALANG PAPAN AS SHALLOW WATER AREAS EXIST. VESSELS ARE ADVISED TO KEEP LOOKOUT FOR TUGS AND BARGES NAVIGATING NEAR THE PROJECT AREAS AND PASSENGER FERRIES CROSSING BETWEEN CHANGI AND PULAU TEKONG AND VICINITY OF PASIR GUDANG.

TT217

HELEN MAR REEF (RACON M) FL.6SEC IN POSITION 01° 07.66'N 103° 40.56'E HAS BEEN REPORTED UNLIT. VESSELS TO NAVIGATE WITH EXTRA CAUTION.

TT240

SALVAGE OPERATIONS IS BEING CONDUCTED IN THE VICINITY OF HORSBURGH LIGHTHOUSE IN POSITION LAT 01° 19.814'N LONG 104° 24.337'E.
ALL VESSELS APPROACHING THE VICINITY ARE ADVISED TO MAINTAIN A GOOD LOOKOUT AND KEEP AT LEAST 5 CABLES CLEAR FROM HORSBURGH LIGHTHOUSE.

TT241

UNKNOWN UNLIT YELLOW COLOUR BUOY REPORTED ADRIFT AT POSITION LAT 01° 14.55'N LONG 103° 58.47'E. ALL VESSELS ARE ADVISED TO KEEP A LOOK OUT.

TT961

VESSELS INTENDING TO CROSS THE TRAFFIC SEPARATION SCHEME(TSS) OR PRECAUTIONARY AREAS IN THE SINGAPORE STRAIT DURING THE HOURS OF DARKNESS ARE RECOMMENDED TO DISPLAY THE NIGHT SIGNALS CONSISTING OF 3 ALL-ROUND GREEN LIGHTS IN A VERTICAL LINE WITH EFFECT FROM 1ST JULY 2011 AT 010000UTC (0800SGT) AS DETAILED IN MARITIME AND PORT AUTHORITY OF SINGAPORE'S PORT MARINE CIRCULAR, 02 OF 2011 DATED 30 MAY 2011.

ISSUED BY SINGAPORE PORT OPERATIONS CONTROL CENTRE (as at 22nd February 2015)

V

EXTRACT OF ADMIRALTY NOTICES TO MARINERS FOR DUAL-BADGED CHARTS

These notices can also be accessed directly from UKHO Website:



<http://www.ukho.gov.uk/ProductsandServices/MaritimeSafety/Pages/NMPublic.aspx>

630 SINGAPORE – Sentosa E – Eastern Fairway – Pilot boarding places.

Source: Maritime and Port Authority of Singapore

Note: Former Notice 255(P)/15 is cancelled.

Chart 4041 [previous update 272/15] WGS84 DATUM

Insert	 Eastern Boarding Ground C	1° 15'·89N., 103° 57'·83E.
Move	 Eastern Boarding Ground B , from:	1° 15'·65N., 103° 57'·40E.
	to:	1° 15'·41N., 103° 56'·96E.

634 SINGAPORE – Tuas View S, Pulau Sudong NW, Terumbu Pandan NE, Pulau Buaya, Pulau Damar Laut SE Seraya Power Station and West Keppel Fairway N – Buoy. Beacons. Depths. Works. Legends. Dredged depths. Berth. Light-beacon.

Source: Maritime and Port Authority of Singapore

Chart 4030 [previous update 272/15] WGS84 DATUM

Delete	 Fl.Y.4s TS-01	1° 16'·576N., 103° 38'·806E.
--------	---	------------------------------

Chart 4031 [previous update 272/15] WGS84 DATUM

Delete	 Banyan (Ru)	1° 13'·345N., 103° 41'·583E.
--------	---	------------------------------

Chart 4032 [previous update 272/15] WGS84 DATUM

Insert	depth, 16s	1° 15'·761N., 103° 45'·502E.
		(a) 1° 15'·583N., 103° 45'·774E.
Delete	depth, 17 , close SW of:	(a) above
	 Banyan (Ru)	1° 13'·345N., 103° 41'·585E.

Chart 4033 [previous update 5445/14] WGS84 DATUM

Insert	maritime limit, pecked line, joining:	1° 17'·386N., 103° 42'·200E.
		1° 17'·272N., 103° 41'·999E.
		1° 17'·194N., 103° 42'·028E.
		(shore)
		and
		1° 17'·179N., 103° 42'·035E.
		(shore)
		1° 17'·117N., 103° 42'·071E.
		1° 17'·108N., 103° 42'·058E.
		1° 17'·049N., 103° 42'·099E.
		(shore)
		and
		1° 17'·046N., 103° 42'·101E.
		(shore)
		1° 16'·967N., 103° 42'·155E.
		(existing limit)
	legend, Works in progress (2014), centred on:	1° 17'·202N., 103° 42'·208E.
Delete	 Fl.R.5s3m3M Chawan	1° 17'·160N., 103° 42'·120E.
		1° 17'·014N., 103° 42'·214E.
	 Fl.Y.4s TS-01	1° 16'·576N., 103° 38'·806E.

V

EXTRACT OF ADMIRALTY NOTICES TO MARINERS FOR DUAL-BADGED CHARTS

634 SINGAPORE – Tuas View S, Pulau Sudong NW, Terumbu Pandan NE, Pulau Buaya, Pulau Damar Laut SE Seraya Power Station and West Keppel Fairway N – Buoy. Beacons. Depths. Works. Legends. Dredged depths. Berth. Light-beacon. (continued)

Chart 4034 [previous update 272/15] WGS84 DATUM

Insert	depth, 16s	1° 15'·761N., 103° 45'·502E.
	limit of dredged area, pecked line, joining:	(a) 1° 15'·583N., 103° 45'·774E.
		(b) 1° 17'·029N., 103° 43'·947E. (existing limit)
		1° 17'·012N., 103° 43'·965E.
		1° 16'·992N., 103° 43'·946E.
		(c) 1° 17'·010N., 103° 43'·928E. (existing limit)
		and
		1° 15'·719N., 103° 46'·761E. (existing limit)
		1° 15'·573N., 103° 46'·674E.
		1° 15'·551N., 103° 46'·714E. (existing limit)
Amend	legend, 18.0m (2014) , centred on: berth number, P34	(d) 1° 15'·628N., 103° 46'·731E.
	dredged depth to, 6.3m (2014) , centred on:	1° 15'·606N., 103° 46'·766E.
	dredged depth to, 12.0m , centred on:	1° 17'·997N., 103° 43'·301E.
		1° 17'·089N., 103° 43'·866E.
Delete	depth, 17 , close SW of:	(a) above
	former limit of dredged area, pecked line, joining:	(b)-(c) above
	depth, 18 , close NE of:	(d) above
	depth, 20 , and associated 20m contour, close SW of:	(d) above
	20m contour, joining:	1° 15'·673N., 103° 46'·734E. (existing contour)
		1° 15'·557N., 103° 46'·702E. (existing contour)

Chart 4035 [previous update 272/15] WGS84 DATUM

Insert	depth, 16s	(a) 1° 15'·583N., 103° 45'·774E.
	limit of dredged area, pecked line, joining:	1° 15'·719N., 103° 45'·761E. (existing limit)
		1° 15'·573N., 103° 46'·674E.
		1° 15'·551N., 103° 46'·714E. (existing limit)
	legend, 18.0m (2014) , centred on: berth number, P34	(b) 1° 15'·628N., 103° 46'·731E.
		1° 15'·606N., 103° 46'·766E.
Delete	depth, 17 , close SW of:	(a) above
	depth, 18 , close NE of:	(b) above
	depth, 20 , and associated 20m contour, close SW of:	(b) above
	20m contour, joining:	1° 15'·673N., 103° 46'·734E. (existing contour)
		1° 15'·557N., 103° 46'·702E. (existing contour)

V

EXTRACT OF ADMIRALTY NOTICES TO MARINERS FOR DUAL-BADGED CHARTS

634 SINGAPORE – Tuas View S, Pulau Sudong NW, Terumbu Pandan NE, Pulau Buaya, Pulau Damar Laut SE Seraya Power Station and West Keppel Fairway N – Buoy. Beacons. Depths. Works. Legends. Dredged depths. Berth. Light-beacon. (continued)

Chart 4038 [previous update 272/15] WGS84 DATUM


Delete  *Fl.Y.4s TS-01* 1° 16' 58N., 103° 38' 79E

Chart 4039 [previous update 272/15] WGS84 DATUM

Delete  Banyan (Ru) 1° 13' 35N., 103° 41' 59E.

Chart 4040 [previous update 272/15] WGS84 DATUM

Insert depth, **16s** 1° 15' 76N., 103° 45' 50E.

Delete  *Fl.Y.4s TS-01* 1° 16' 58N., 103° 38' 79E

 Banyan (Ru) 1° 13' 35N., 103° 41' 59E.

707(T)/15 MALACCA STRAIT – Permatang Sedepa (One Fathom Bank) – Wreck.

Source: Marine Department, Peninsular Malaysia Notices 35(T)/07 and 38(T)/08

1. Salvage operations are carried out on the wreck *Arktis Island* in position 2° 53' 14N., 100° 59' 00E.
2. Numerous vessels will be involved in the operations.
3. Mariners are advised to keep clear of operations and navigate with caution in the vicinity. (WGS84 Datum)
4. Former Notice 938(T)/13 is cancelled.

Admiralty charts affected: 2139, 3901, 3902, 3940, 3945, 3946

Singaporean charts affected: 200

708(T)/15 MALAYSIA – Peninsular Malaysia, West Coast – Tanjung Tuan South-eastwards – Buoy. Wreck.

Source: Malaysian Notice 7/119(T)/13 and Marine Department Notice 60(T)/13

1. An isolated danger light-buoy, *Fl(2)10s*, marking a wreck, has been temporarily established in position 2° 19' 42N., 101° 57' 63E. (WGS84 Datum)
2. Former Notice 3961(T)/13 is cancelled.

Admiralty charts affected: 3902, 3946

Singaporean charts affected: 200

Updated to Admiralty Notices to Mariners Edition No. 8 of 2015 dated 26th February 2015.

SINGAPORE ENC DISTRIBUTORS

ENC DISTRIBUTOR	ADDRESS	TEL/FAX /EMAIL/WEBSITE
ChartWorld GmbH	Atlantic Haus, Zirkusweg 1 D-20359 Hamburg Germany	Tel: +49 40 853 58 6942 Fax: +49 40 853 58 6949 Email: sales@chartworld.com
ChartWorld Asia Pacific Pte Ltd.	Frontech Centre 07-01, 15 Jalan Kilang Barat, Singapore 159357	Tel: +65 6513 3500 Website: http://www.chartworld.com http://www.ecdis-as-a-service.com
DPM (Singapore) Pte Ltd	2 Boon Leat Terrace, #05-02/03 Harbourside 2, Singapore 119844	Tel: +65 6270 4060 Fax: +65 6276 3858 Email: sales@dpmsingapore.com.sg Website: http://www.dpmsingapore.com.sg
Maritime Information Systems (MARIS)	52, Telok Blangah Road #01-06, Telok Blangah House, Singapore 058809	Tel: +65 6276 1472 Fax: +65 6276 1473 Email: : support@maris.sg Website: http://www.maris.no
Maritime Information Systems AS (MARIS)	Danholmen 25, 3128 Notteroy, Norway	Tel: +47 33 30 42 50 Fax: +47 33 30 42 51 Email: : sales@maris.no Website: http://www.maris.no
Motion Smith	15 Jalan Kilang Barat #08-01/05 Frontech Centre, Singapore 159357	Tel: +65 6220 5098 Fax: +65 6225 4902 Email: sales@motsmith.com Website: http://www.motsmith.com
Transas Marine Pacific Pte Ltd	Cyber Centre 16/18 Jalan Kilang Barat Off Jalan Bukit Merah Singapore 159358	Tel: +65 6271 0200 Fax: +65 6271 7300 Email: navigation.asia@transas.com Website: http://www.transas.com
Japan Hydrographic Association (Electronic Charts Division)	Daiichi Sogo Bldg, 6F 1-6-6, Hanedakuko, Ota-ku Tokyo 144-0041, Japan	Tel: +81 3 5708 7093 Fax: +81 3 5708 7094 Email: shimizu-6kj@jha.jp Website: http://www.jha.or.jp/en/jha/
Jeppesen Norway AS	P.O Box 212 , N-4371 Egersund, Norway	Tel: +47 51 46 4700 Fax: +47 51 46 4701 Email: license.marine@jeppesen.com Website : http://www.jeppesen.com/marine
PRIMAR STAVANGER	Lervigsveien 36, P.O Box 60, N-4001 Stavanger, Norway	Tel: +47 51 93 9500 Fax: +47 51 93 9501 Email: sales@ecc.no Website : http://www.primar.no
The United Kingdom Hydrographic Office	Admiralty Way, Taunton, Somerset, TA1 2DN United Kingdom	Tel: +44 1823 33 7900 Fax: +44 1823 28 4077 Emails: ENCS.SalesReports@ukho.gov.uk Website: http://www.ukho.gov.uk

Chart Distributors for the Maritime and Port Authority of Singapore
Nautical Charts and Publications

Please approach any of the Chart Distributors to purchase the Singapore Nautical Charts and Publications.

CHART DISTRIBUTORS	ADDRESS	TEL/FAX/EMAIL/WEBSITE
Cornes (Singapore) Pte Ltd	10 Anson Road #23-06/6A International Plaza Singapore 079903	Tel: +65 6223 8320 Fax: +65 6223 8321 Email: sales9850@cspl.sg Website: http://www.cornes-charts.com
DPM (Singapore) Pte Ltd	2 Boon Leat Terrace, #05-02/03 Harbourside 2, Singapore 119844	Tel: +65 6270 4060 Fax: +65 6276 3858 Email: sales@dpmsingapore.com.sg Website: http://www.dpmsingapore.com.sg
E.W. Liner Charts & Publications Pte Ltd	102F, Pasir Panjang Road, #08-01, Citilink Warehouse Complex, Singapore 118530	Tel: +65 6323 0773 Fax: +65 6323 0775 Email: ewliner@singnet.com.sg Website: http://www.ewliner.com
Kelvin Hughes (Singapore) Pte Ltd	896 Dunearn Road #03-05 Sime Darby Centre Singapore 589472	Tel: +65 6545 9880 Fax: +65 6545 8892 Email: leslie.khoo@kelvinhughes.com.sg Website: http://www.kelvinhughes.com
Motion Smith	15 Jalan Kilang Barat #08-01/05 Frontech Centre Singapore 159357	Tel: +65 6220 5098 (After office hours: +65 8163 9993) Fax: +65 6225 4902 Email: sales@motsmith.com Website: http://www.motsmith.com

HYDROGRAPHIC NOTE - Instructions

1. Mariners are requested to notify the Chief Hydrographer, Maritime and Port Authority of Singapore, when new or suspected dangers to navigation are discovered, changes are observed in aids to navigation or where corrections to nautical publications may be necessary. Reports, which cannot be confirmed or are lacking in certain details should not be withheld.
2. Any ambiguities of time, positioning and depth should be stressed and any firm expectation of being able to check the information provided on a following voyage should be mentioned.
3. Mariners using satellite position fixing systems, eg. GPS, should provide details of equipment and datum used (where applicable). Where bearings (true or magnetic) are taken visually or by radar to fix a position, it should include more than two objects in order to provide a check on its accuracy. A position may also be defined by bearing and distance from a conspicuous object eg. beacon, lighthouse etc.
4. The note should include a tracing or a digital image of the chart used and the details should be clearly marked.
5. Echo sounders frequently register greater depths than the advertised maximum depth for the equipment, eg. a trace appearing at 50 metres may be in fact be 550 metres or even 1050 metres for equipment whose maximum depth is 500 metres. Erroneous depths caused by 2nd transmission error can usually be recognised by the following:
 - (a) the tracing being weaker than normal for the depth registered,
 - (b) the trace appearing to pass through the transmission line,
 - (c) the feathery nature of the trace.
6. Upon receipt of a hydrographic note, a Notice to Mariners may be issued. The sender's vessel or name is quoted as the source unless the same information is also received in foreign Notices to Mariners.
7. Reports of shoals, uncharted dangers and defects in aids to navigation may also be made to the appropriate Singapore Port Operations Control Centre on VHF Channels 10, 12, 14, 68 or 73.

HYDROGRAPHIC NOTE

To:

Chief Hydrographer
Maritime and Port Authority of Singapore
460 Alexandra Road PSA Building #20-00
Singapore 119963

Tel : (65) 6325 2027
Fax : (65) 6226 1076
Email : hydrographic@mpa.gov.sg

Sender's Contact Details :

Date :

Name of Vessel :

Address of Sender :

Tel : Fax :

Email :

Nature of Observation :

General Location :

Subject :

Position : Lat. Long.

Charts Used :

Date & Time of Observation :

Details :

.....

.....

Attachment :

Equipment Used :

Type of Position Fixing : GPS / DGPS Others :

Type of Echo Sounder :

Name and Signature :

Ship's/Company's Stamp :