



SINGAPOREAN NOTICES TO MARINERS

SECTION	CONTENT	Page
I	Index of Charts & Publications	3
II	New Publications	9
	Notices to Mariners and Chart Corrections	13
	Temporary and Preliminary Notices	14
III	Navigational Information	15
	Amendments to Publications	16
IV	Reprint of Radio Navigational Warnings	20
V	Extract of Admiralty Notices to Mariners for Dual-Badged Charts	22

The monthly Notices to Mariners contain corrective information affecting charts published by the Hydrographic Department, Maritime and Port Authority of Singapore. The information contained in these Notices should be updated on the charts affected. Notices under Section II apply only to the particular Singaporean Chart(s) indicated.

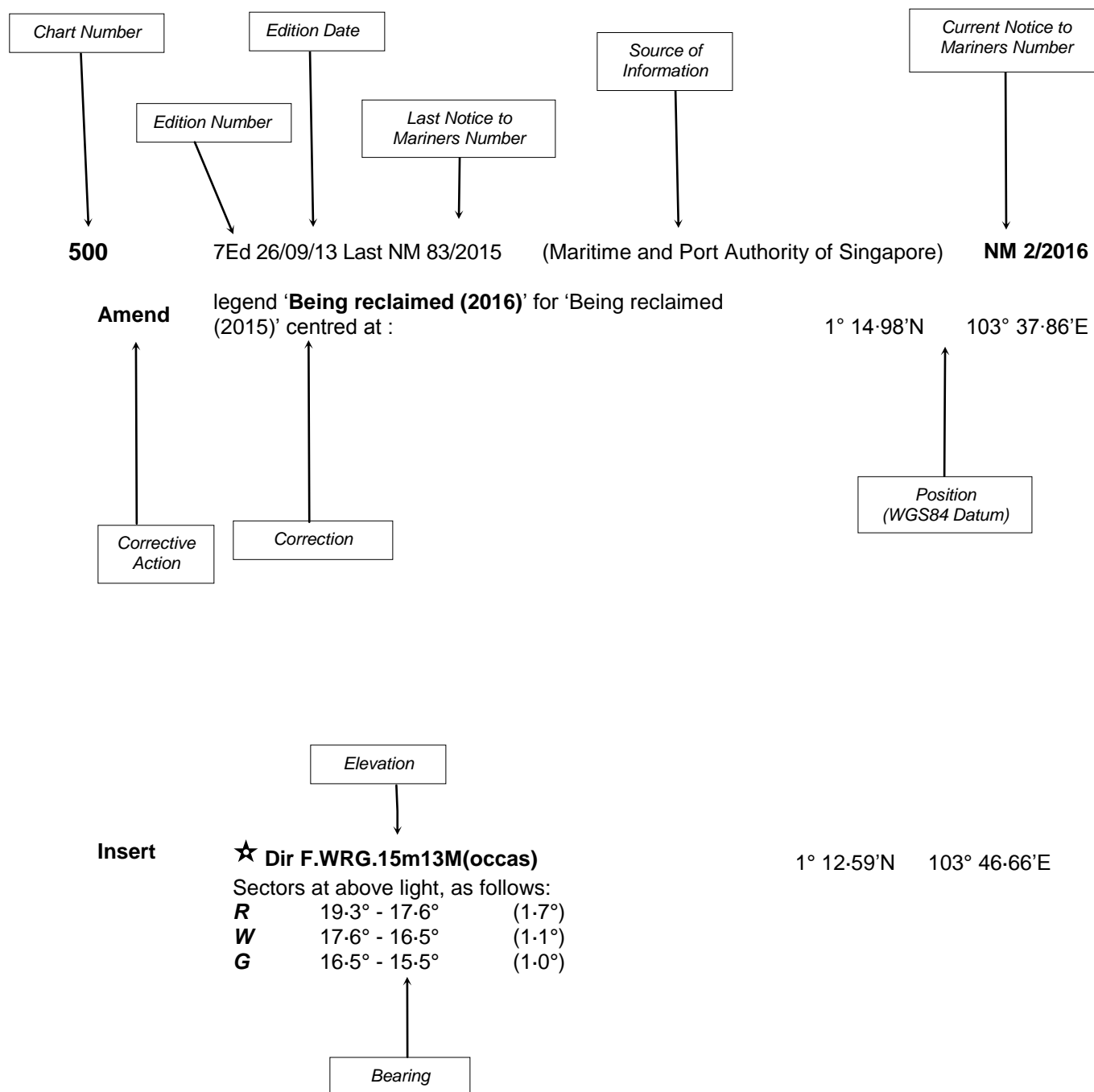
Mariners are requested to notify the Chief Hydrographer, Maritime and Port Authority of Singapore, immediately on the discovery of new dangers or suspected dangers to navigation and of changes or defects in aids to navigation. See Hydrographic Note on back page.

The monthly Singaporean Notices to Mariners can be accessed directly from the MPA website:
<http://www.mpa.gov.sg/web/portal/home/port-of-singapore/circulars-and-notices/singapore-notices-to-mariners-ntm>

Hydrographic Department
Maritime and Port Authority of Singapore
7B Keppel Road
#20-00 Tanjong Pagar Complex
Singapore 089055
Tel: (65) 6325 2027
Fax: (65) 6226 1076
Email: hydrographic@mpa.gov.sg

EXPLANATION OF FORMAT

The elements of a typical chart correction are explained below.



Notes:

- Notice to Mariners number followed by:
T indicates a Temporary Notice (eg. **NM 3T/2016**).
P indicates a Preliminary Notice (eg. **NM 4P/2016**).
- Bearings are true reckoned clockwise from 000° to 359° ; those relating to lights are from seaward.
- Heights and elevations are above Mean High Water Springs.

I
INDEX OF CHARTS AND PUBLICATIONS

INDEX OF AFFECTED CHARTS

DESCRIPTION	NOTICE NO.	PAGE NO.
Index of Singaporean Charts	-	3, 4
Index of Dual-Badged Charts	-	5 to 7
Index of Singapore Electronic Navigational Chart (ENC)	-	8
New Edition Dual Badged Chart	-	9,10
New Edition Singapore ENC	-	10,11
New Edition Singaporean Chart	-	12
Singaporean Chart 202	16,*17	13
Singaporean Chart 503	*17	13
Temporary and Preliminary Notices	-	14
Singapore Port Marine Notices/Circulars	*18	15
Singaporean Print-On-Demand (POD) Charts	*19	15
Amendments to Publications	*20,*21	16 to 19
Reprint of Radio Navigational Warnings	-	20,21
Extract of Admiralty Notices to Mariners for Dual-Badged Charts	-	22
Singapore Electronic Navigational Chart (ENC) Distributors	-	23
Chart Distributors for the Maritime and Port Authority of Singapore Nautical Charts and Publications	-	24

*Source: Maritime and Port Authority of Singapore

I
INDEX OF CHARTS AND PUBLICATIONS

INDEX OF NOTICES

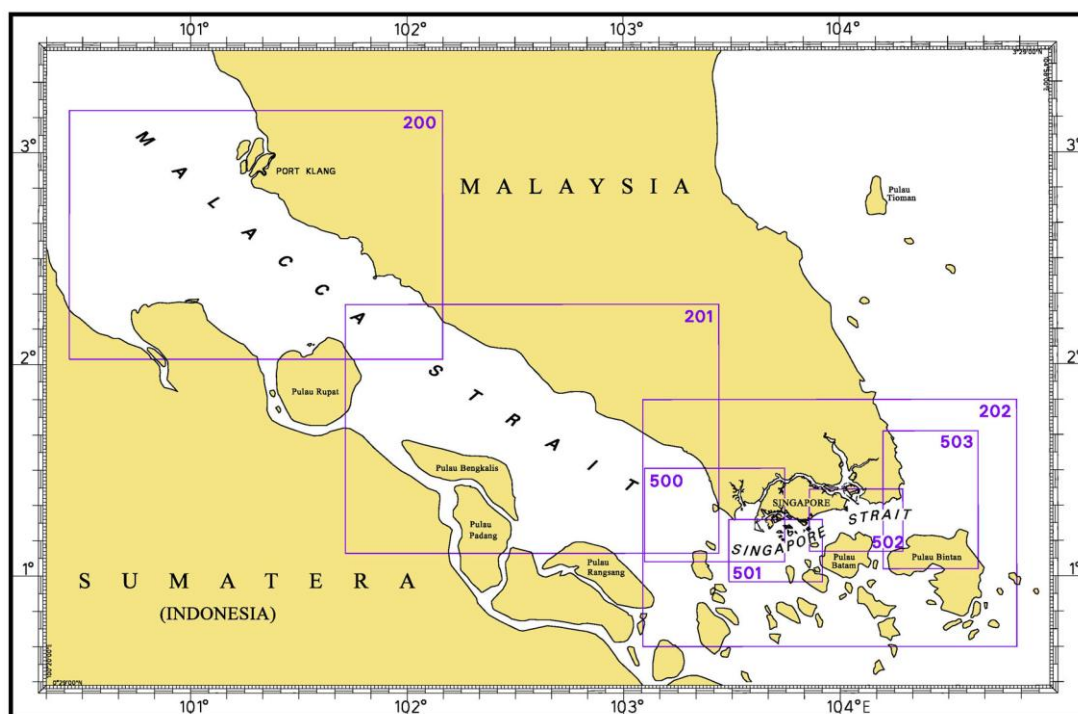
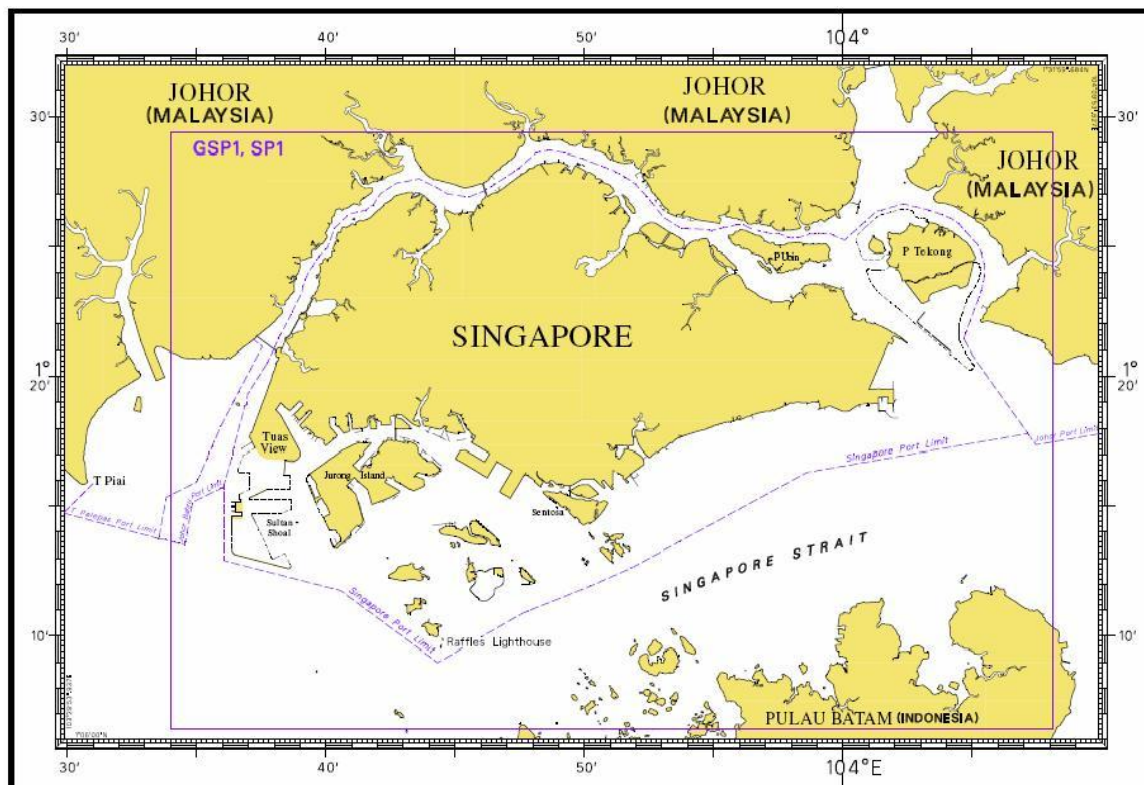
NOTICE NO.	DESCRIPTION	PAGE NO.
-	Index of Singaporean Charts	3, 4
-	Index of Dual-Badged Charts	5 to 7
-	Index of Singapore Electronic Navigational Chart (ENC)	8
-	New Edition Dual Badged Chart	9,10
-	New Edition Singapore ENC	10,11
-	New Edition Singaporean Chart	12
16,*17	Singaporean Chart 202	13
*17	Singaporean Chart 503	13
-	Temporary and Preliminary Notices	14
*18	Singapore Port Marine Notices/Circulars	15
*19	Singaporean Print-On-Demand (POD) Charts	15
*20,*21	Amendments to Publications	16 to 19
-	Reprint of Radio Navigational Warnings	20,21
-	Extract of Admiralty Notices to Mariners for Dual-Badged Charts	22
-	Singapore Electronic Navigational Chart (ENC) Distributors	23
-	Chart Distributors for the Maritime and Port Authority of Singapore Nautical Charts	24

* Source: Maritime and Port Authority of Singapore

I

INDEX OF CHARTS AND PUBLICATIONS

INDEX OF SINGAPOREAN CHARTS



Notes:

Updated Singaporean Charts are available through our Print-On-Demand (POD) Chart Service. For more information, refer to Section III – Navigational Information. These charts can be purchased from our Chart Distributors.

I
INDEX OF CHARTS AND PUBLICATIONS

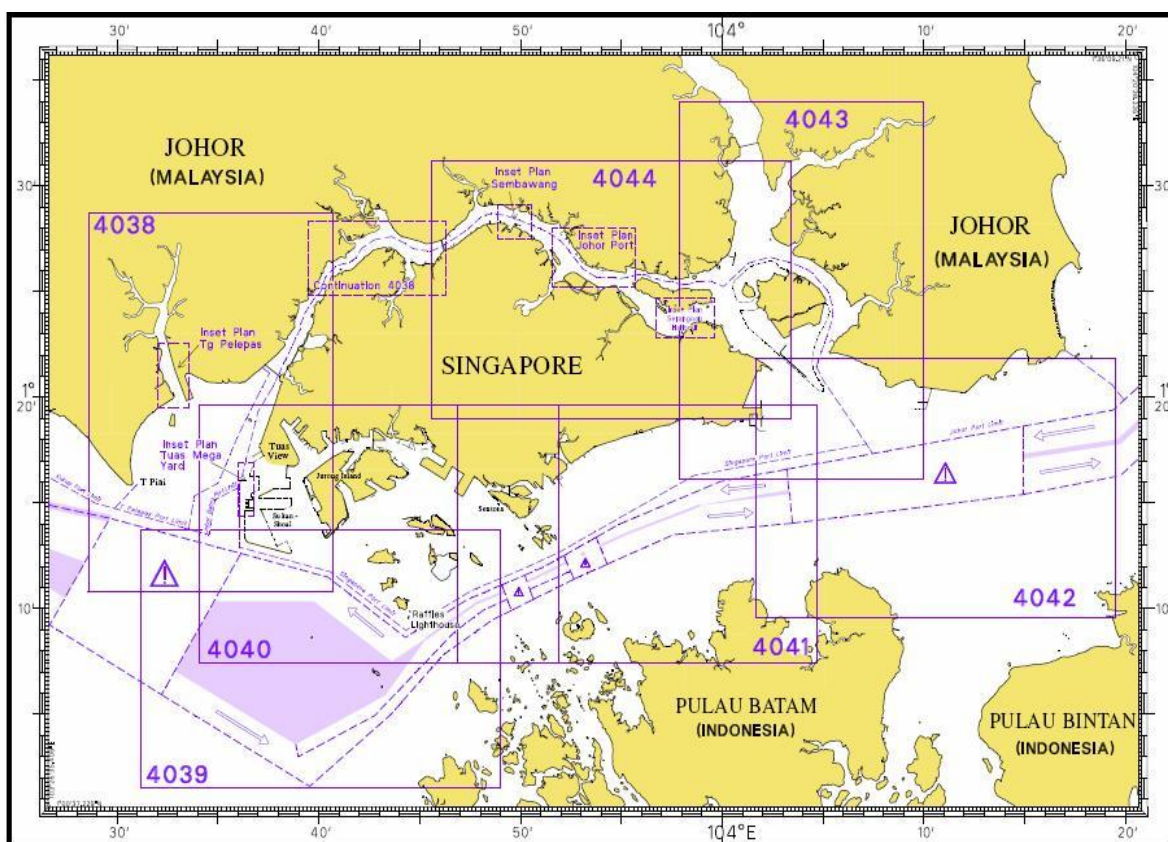
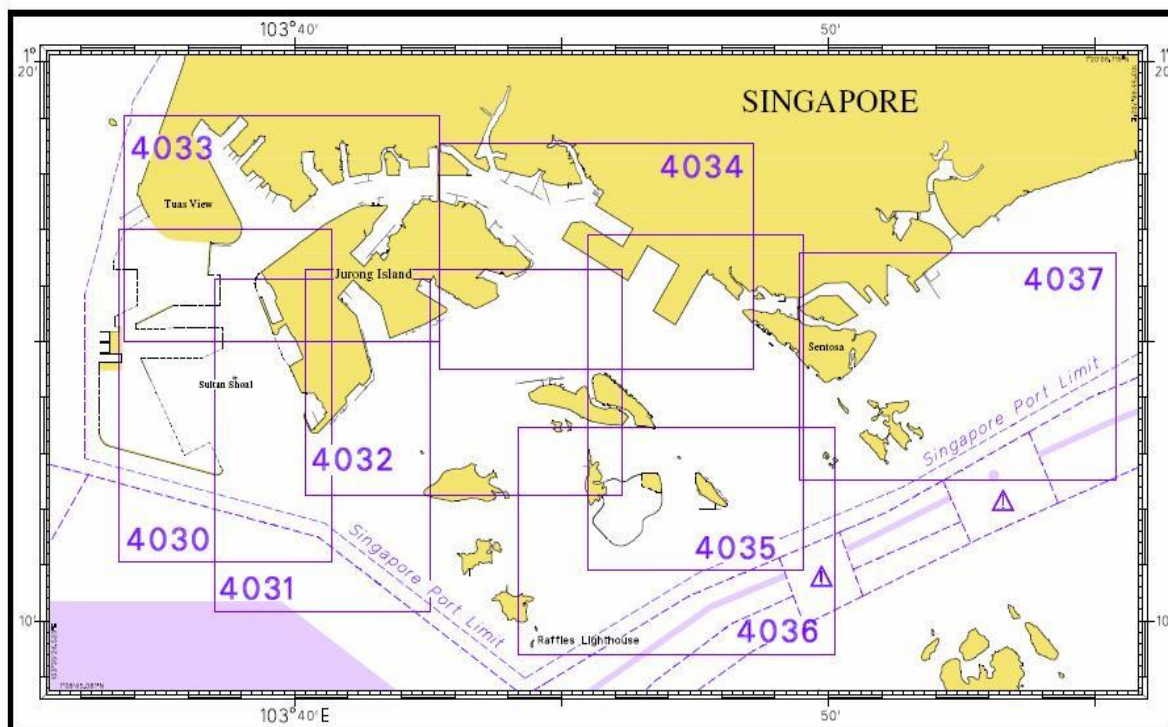
SINGAPOREAN CHARTS

Chart No.	Chart Title	Scale 1:	Date Published of Latest Edition
GSP1	Anchorage and Aids to Navigation (with Area Reference)	65 000	15/02/2016
SP1	Anchorage and Aids to Navigation	65 000	15/02/2016
200	Malacca Strait - Port Klang to Tanjung Keling	200 000	01/09/2015
201	Malacca Strait - Tanjung Keling to Western Entrance of Singapore Strait	200 000	15/08/2014
202	Singapore Strait	200 000	26/09/2013
500	Malacca and Singapore Straits – Pulau Pisang to Raffles Lighthouse	75 000	26/09/2013
501	Singapore Strait – Western Part	50 000	01/09/2015
502	Singapore Strait - Eastern Part	50 000	01/09/2015
503	South China Sea - Eastern Approaches and Entrance to Singapore Strait	75 000	15/08/2014
-	Charts for Small Craft – Singapore Port Waters and Approaches	10 000 to 200 000	January 2016
1	Symbols Abbreviations Terms and S-57 Objects used on Singapore Nautical and Electronic Navigational Charts. Available at MPA website: http://www.mpa.gov.sg	-	28/07/2011

I

INDEX OF CHARTS AND PUBLICATIONS

DUAL-BADGED CHARTS



I
INDEX OF CHARTS AND PUBLICATIONS

Chart No.	Chart Title	Scale 1:	Date Published of Latest Edition
4030	Port of Singapore West Jurong Anchorages and Temasek Fairway	10 000	07/05/2015
4031	Port of Singapore Western Approaches to Jurong Island	10 000	07/05/2015
4032	Port of Singapore Sinki Fairway	10 000	15/05/2014
4033	Port of Singapore Tuas Bay, West Jurong Channel and Pesek Basin	10 000	07/05/2015
4034	Port of Singapore East Jurong Channel, Pasir Panjang Terminal and West Keppel Fairway	10 000	28/05/2015
4035	Port of Singapore Western Anchorages, Jong Fairway and Cruise Bay	10 000	28/05/2015
4036	Port of Singapore Raffles Lighthouse to The Sisters	10 000	28/05/2015
4037	Port of Singapore Keppel Harbour, Tanjong Pagar Terminal and Approaches	10 000	28/05/2015
4038	Malaysia and Singapore Johor Strait – Western Part	30 000	25/02/2016
4039	Indonesia, Singapore and Malaysia Western Approaches to Main Strait	30 000	24/04/2014
4040	Singapore, Indonesia and Malaysia Tuas View to Pulau Sakijang Bendera (S. John's Island)	30 000	27/08/2015
4041	Singapore and Indonesia Pulau Sebarok to Changi	30 000	27/08/2015

I

INDEX OF CHARTS AND PUBLICATIONS**DUAL- BADGED CHARTS**

Chart No.	Chart Title	Scale 1:	Date Published of Latest Edition
4042	Indonesia, Malaysia and Singapore Changi to Pulau Mungging and Tanjung Buntan to Tanjung Tondang	30 000	24/04/2014
4043	Malaysia and Singapore Kuala Johor and Sungai Johor	30 000	09/04/2015
4044	Singapore and Malaysia Johor Strait - Eastern Part	30 000	09/04/2015

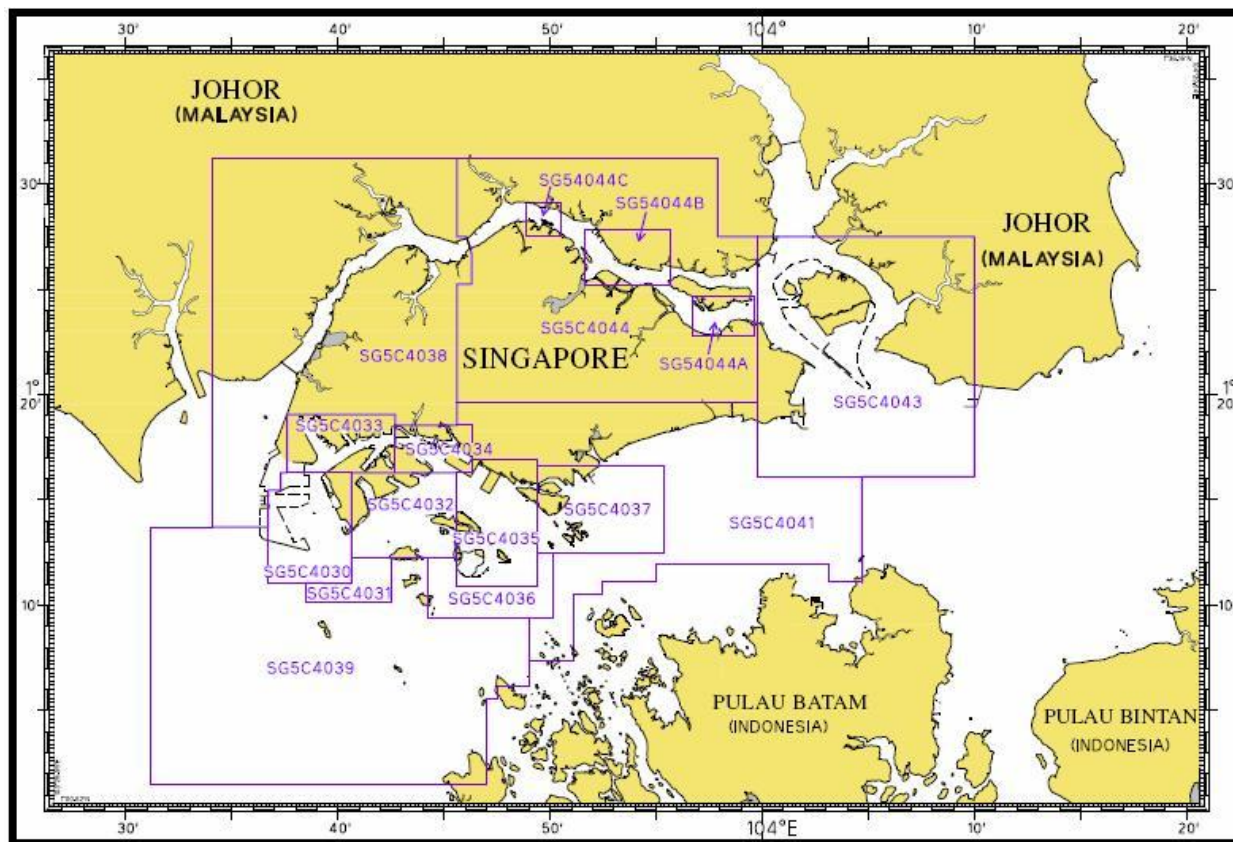
SINGAPOREAN PUBLICATIONS

Item	Title	Date Published of Latest Edition
1	Singapore Tide Tables Year 2016	09/09/2015
2	Singapore Port Information 2016/2017	04/01/2016

I

INDEX OF CHARTS AND PUBLICATIONS

INDEX OF SINGAPORE ELECTRONIC NAVIGATIONAL CHART (ENC)



SINGAPORE ELECTRONIC NAVIGATIONAL CHART (ENC)

ENC Name	ENC Coverage	ENC Edition
SG5C4030	West Jurong Anchorages and Temasek Fairway	8 th Edition (7/05/2015)
SG5C4031	Western Approaches to Jurong Island	7 th Edition (1/09/2014)
SG5C4032	Sinki Fairway	10 th Edition (7/05/2015)
SG5C4033	Tuas Bay, West Jurong Channel and Pesek Basin	8 th Edition (7/05/2015)
SG5C4034	East Jurong Channel, Pasir Panjang Terminal and West Keppel Fairway	13 th Edition (28/05/2015)
SG5C4035	Western Anchorages, Jong Fairway and Cruise Bay	16 th Edition (28/05/2015)
SG5C4036	Raffles Lighthouse to The Sisters	9 th Edition (28/05/2015)
SG5C4037	Keppel Harbour, Tanjong Pagar Terminal and Approaches	9 th Edition (28/05/2015)
SG5C4038	Johor Strait – Western Part	9 th Edition (25/02/2016)
SG5C4039	Western Approaches to Main Strait	8 th Edition (27/08/2015)
SG5C4041	Pulau Sebarok to Changi	9 th Edition (27/08/2015)
SG5C4043	Kuala Johor	11 th Edition (9/04/2015)
SG5C4044	Johor Strait – Eastern Part	11 th Edition (9/04/2015)
SG54044A	Serangoon Harbour	2 nd Edition (9/04/2015)
SG54044B	Pelabuhan Johor (Johor Port)	2 nd Edition (9/04/2015)
SG54044C	Sembawang	2 nd Edition (9/04/2015)

The latest edition of the Singapore ENC covering Singapore Waters and their approaches can be found in our monthly Singaporean Notices to Mariners at MPA website: <http://www.mpa.gov.sg>

II NEW PUBLICATIONS

NEW EDITION DUAL BADGED CHART PUBLISHED ON 25TH FEBRUARY 2016

Chart Number	:	4038
Title	:	Malaysia and Singapore Johor Strait, Western Part
Coverage	:	Lat 01° 10-80' N 01° 28-70' N Long 103° 28-60' E 103° 40-70' E
Scale	:	1: 30 000
Date Published	:	25 th February 2016
Size of Chart	:	750.6 x 1100.2 mm
Remarks	:	This new edition includes updates covering Temasek Fairway, West Jurong Channel, Sudong Anchorage, west of Tuas View Extension, West Johor Strait and Tanjung Pelepas.

The existing chart of the same number published on 26th September 2013 is superseded.

NEW EDITION DUAL BADGED CHART TO BE PUBLISHED ON 17TH MARCH 2016

Chart Number	:	4030
Title	:	Port of Singapore West Jurong Anchorages and Temasek Fairway
Coverage	:	Lat 01° 11-05' N 01° 17-00' N Long 103° 36-70' E 103° 40-70' E
Scale	:	1 : 10 000
Date Published	:	17 th March 2016
Size of Chart	:	742.0 x 1096.5 mm
Remarks	:	This new edition includes updates covering Temasek Fairway, West Jurong Channel, Jurong Anchorages, west of Jurong Island and Sudong Anchorages.

The existing chart of the same number published on 07th May 2015 will be superseded.

II NEW PUBLICATIONS

Chart Number : 4031
Title : Port of Singapore
 Western Approaches to Jurong Island
Coverage : Lat 01° 10·15' N 01° 16·12' N
 Long 103° 38·50' E 103° 42·53' E
Scale : 1 : 10 000
Date Published : 17th March 2016
Size of Chart : 747·5 x 1100·2 mm
Remarks : This new edition includes updates covering Temasek Fairway, west of Jurong Island, Banyan Basin and Sudong Anchorages.
 The existing chart of the same number published on 07th May 2015 will be superseded.

Chart Number : 4033
Title : Port of Singapore
 Tuas Bay, West Jurong Channel and Pesek Basin
Coverage : Lat 01° 15·00' N 01° 19·05' N
 Long 103° 36·80' E 103° 42·70' E
Scale : 1 : 10 000
Date Published : 17th March 2016
Size of Chart : 1094·4mm x 746·4mm
Remarks : This new edition includes updates covering Temasek Fairway, West Jurong Channel, Tuas Approach Channel, Northern Tuas Basin and Pesek Basin.
 The existing chart of the same number published on 07th May 2015 will be superseded.

NEW EDITION SINGAPORE ENC RELEASED ON 25TH FEBRUARY 2016

ENC Name : SG5C4038
Location : Johor Strait – Western Part
Coverage : Lat 01° 13·70' N 01° 31·20' N
 Long 103° 34·10' E 103° 46·34' E
Compilation Scale : 1: 22 000
Date Released : 25th February 2016
Descriptions : This new edition includes updates covering Temasek Fairway, West Jurong Channel, Sudong Anchorage, west of Tuas View Extension, West Johor Strait and Tanjung Pelepas.
 The existing cell of the same name released on 27th August 2015 is superseded.

II NEW PUBLICATIONS

NEW EDITION SINGAPORE ENC TO BE RELEASED ON 17TH MARCH 2016

ENC Name : SG5C4030
Location : West Jurong Anchorages and Temasek Fairway
Coverage : Lat 01° 11'050' N 01° 16'300' N
 Long 103° 36'700' E 103° 40'640' E
Compilation Scale : 1: 8 000
Date Released : 17th March 2016
Descriptions : This new edition includes updates covering Temasek Fairway, West Jurong Channel, Jurong Anchorages, west of Jurong Island and Sudong Anchorages.

The existing cell of the same name released on 07th May 2015 will be superseded.

ENC Name : SG5C4031
Location : Western Approaches to Jurong Island
Coverage : Lat 01° 10'150' N 01° 12'250' N
 Long 103° 38'500' E 103° 42'530' E
Compilation Scale : 1: 8 000
Date Released : 17th March 2016
Descriptions : This new edition includes updates covering Sudong Anchorages.

The existing cell of the same name released on 01st September 2014 will be superseded.

ENC Name : SG5C4033
Location : Tuas Bay, West Jurong Channel and Pesek Basin
Coverage : Lat 01° 16'300' N 01° 19'050' N
 Long 103° 38'000' E 103° 42'700' E
Compilation Scale : 1: 8 000
Date Released : 17th March 2016
Descriptions : This new edition includes updates covering Tuas Bay, West Jurong Channel and Pesek Basin.

The existing cell of the same name released on 07th May 2015 will be superseded.

II NEW PUBLICATIONS

NEW EDITION SINGAPOREAN CHART PUBLISHED ON 15TH FEBRUARY 2016

Chart Number	:	*GSP1
Title	:	Anchorage and Aids to Navigation
Coverage	:	Lat 01° 06.43' N 01° 29.40' N Long 103° 34.00' E 104° 08.10' E
Scale	:	1: 65 000
Date Published	:	15 th February 2016
Size of Chart	:	973.2 x 651.3mm
Descriptions	:	This new edition covers the eastern and western approaches to the port of Singapore. It includes updates on aids to navigation, working areas, submarine cables, updated contours covering west of Tuas View Reclamation, West Johor Strait, Temasek Fairway, West Jurong Channel, East Jurong Channel, Pasir Panjang, West Keppel Fairway, Western anchorages, Buran Channel, East Keppel Fairway, south of St John Island, East Johor Strait and around Pulau Tekong.



The existing chart of the same number published on 2nd March 2015 is superseded.

* This chart is provided with a grid area reference.

Chart Number	:	SP1
Title	:	Anchorage and Aids to Navigation
Coverage	:	Lat 01° 06.43' N 01° 29.40' N Long 103° 34.00' E 104° 08.10' E
Scale	:	1: 65 000
Date Published	:	15 th February 2016
Size of Chart	:	973.2 x 651.3mm
Descriptions	:	This new edition covers the eastern and western approaches to the port of Singapore. It includes updates on aids to navigation, working areas, submarine cables, updated contours covering west of Tuas View Reclamation, West Johor Strait, Temasek Fairway, West Jurong Channel, East Jurong Channel, Pasir Panjang, West Keppel Fairway, Western anchorages, Buran Channel, East Keppel Fairway, south of St John Island, East Johor Strait and around Pulau Tekong.

The existing chart of the same number published on 2nd March 2015 is superseded.

II NOTICES TO MARINERS AND CHART CORRECTIONS

202	7Ed 26/09/13 Last NM 07/2016	(DGST NTM NR 175/15)	NM 16/2016
Amend	light to Fl.G.5s	1°03·83'N	103°17·85'E
	light to Fl.R.4s	1°08·85'N	103°17·02'E
		(Maritime and Port Authority of Singapore)	*NM 17/2016
Insert	 Wk	1°17·83'N	104°23·69'E
<hr/>			
503	5Ed 15/08/14 Last NM 63/2015	(Maritime and Port Authority of Singapore)	*NM 17/2016
Insert	 Wk	1°17·83'N	104°23·69'E
<hr/>			

II
TEMPORARY AND PRELIMINARY NOTICES

NIL

III NAVIGATIONAL INFORMATION

*(NM 18/2016) SINGAPORE PORT MARINE NOTICES/CIRCULARS

The Port Marine Notices/Circulars shortlisted below would be of particular interest to mariners. Details and complete list of Port Marine Notices/Circulars are available at this link: <http://www.mpa.gov.sg>

PMN No.	Subject
11/2016	Dredging work off Pulau Satumu

PMC No.	Subject
03/2016	VHF radio telephone reporting procedures for vessel manoeuvring within the traffic information area (TIA) in the East Johor Strait

*(NM 19/2016) SINGAPOREAN PRINT-ON-DEMAND (POD) CHARTS

Print-On-Demand (POD) Charts are the most up-to-date paper nautical charts printed for navigational use. These nautical charts are produced in accordance with the International Hydrographic Organisation (IHO) chart specifications. All Singaporean Charts are continually updated to the latest Notices to Mariners before they are printed and sold to users.

These POD Charts include GSP1, SP1, 200, 201, 202, 500, 501, 502 and 503.

BENEFITS TO OUR CUSTOMERS

Convenience

Customers need not make numerous hand corrections to the nautical charts before use. In addition the updated POD Charts are more accurate and reliable than offset printed charts with hand corrections.

Clarity

Clarity in the presentation of updated information as compared to non-POD printed charts, where in some cases there are several overlapping corrections over existing information.

Coverage

The POD Charts cover the Straits of Malacca and Singapore, from One Fathom Bank to Horsburgh Lighthouse.

*Source: Maritime and Port Authority of Singapore

III AMENDMENTS TO PUBLICATIONS

*(NM 20/2016) UPDATING OF PUBLICATION “SINGAPORE PORT INFORMATION 2016/2017”

1. Page 105

Amend the following:

No.	Anchorages	Depth (m)	
		Delete	Insert
28	Sudong Explosive (ASUEX)	20.2	20.7
31	Sudong Holding (ASH)	23.1	23.2

2. Page 109

CONTROLLING DEPTHS OF NAVIGATIONAL CHANNELS AND FAIRWAYS

Amend the following:

LOCATIONS	Depth (m)	
	Delete	Insert
West Jurong Channel	12.1	12.0

3. Page 135/136

WEST JURONG CHANNEL

Amend the following:

Name of Beacon/ Buoy	Position	
	Delete	Insert
Kanan Buoy	01°16-898'N 103°40-221'E	01°16-958'N 103°40-131'E
Pesek Buoy	01°17-257'N 103°40-675'E	01°17-182'N 103°40-592'E

4. Page 156

CHANGI EAST

Amend the following:

Name of Beacon/ Buoy	Light Characteristic	
	Delete	Insert
CEF04 Buoy	Fl.Y.4s	Fl.Y.2s

III AMENDMENTS TO PUBLICATIONS

5. Page 158

PULAU TEKONG (Cont/)

Amend the following:

Name of Beacon/ Buoy	Light Characteristic	
	Delete	Insert
TJUT-19 Buoy	Fl.Y.4s	QW

6. Page 171

PULAU BUKOM (SHELL EASTERN PETROLEUM PTE LTD) (01°14-0'N 103°46-1'E)

Amend the following:

Berth	Depth Alongside (Year Surveyed)	
	Delete	Insert
1	11.2m (2012)	11.2m (2015)
2	9.2m (2012)	9.0m (2015)
3	11.3m (2012)	11.0m (2015)
4	11.6m (2012)	11.7m (2015)
5	12.9m (2012)	12.9m (2015)
6	16.5m (2012)	16.4m (2015)
7	13.5m (2012)	13.7m (2015)
8	16.6m (2012)	16.6m (2015)
9	13.0m (2012)	13.0m (2015)
10	15.7m (2012)	15.7m (2015)
10A	3.0m (2012)	2.7m (2015)
10B	5.6m (2012)	5.5m (2015)
10C	6.1m (2012)	6.1m (2015)
11	5.5m (2012)	5.5m (2015)
12	13.0m (2012)	13.1m (2015)
13 (Pulau Ular)	10.9m (2012)	10.9m (2015)

Single Buoy Mooring	Least Depth (Year Surveyed)	
	Delete	Insert
Shell SBM	24.0m (2013)	24.0m (2015)

PULAU ULAR (SHELL EASTERN PETROLEUM PTE LTD) (01°13-6'N 103°45-4'E)

Amend the following:

Berth	Depth Alongside (Year Surveyed)	
	Delete	Insert
ECC Quay	9.1m (2011)	8.3m (2015)

III AMENDMENTS TO PUBLICATIONS

7. Page 205

MARITIME AND PORT AUTHORITY OF SINGAPORE NAUTICAL CHARTS AND PUBLICATIONS DISTRIBUTORS

Amend the following:

Chart Distributor : Global Navigation Solutions Pte Ltd
 Address : 2 Boon Leat Terrace #05-02/03/04,
 Harbourside Building 2
 Singapore 119844
 Telephone : (65) 6270 4060
 : (After Office hours: (65) 9632 5268)
 Fax : (65) 6276 3858
 Email : **sg.info@gnsworldwide.com**
 Internet Web Site : <http://www.gnsworldwide.com>

Page 206

MPA APPOINTED ELECTRONIC NAVIGATIONAL CHART (ENC) DISTRIBUTORS

8. **Amend** the following:

DISTRIBUTOR	ADDRESS	TELEPHONE/FAX NO./EMAIL/WEBSITE
Global Navigation Solutions Pte Ltd	2 Boon Leat Terrace, #05-02/03/04 Harbourside Building 2, Singapore 119844	Tel. No.: +65 6270 4060 Fax No.: +65 6276 3858 Email: sg.info@gnsworldwide.com Website: http://www.gnsworldwide.com

9. Page 211

INDEX

Amend the following:

Delete	Insert
OBT Front Beacon	OTB Front Beacon
OBT Rear Beacon	OTB Rear Beacon

III AMENDMENTS TO PUBLICATIONS

***(NM 21/2016) UPDATING OF PUBLICATION “SINGAPORE TIDE TABLES YEAR 2016”**

1. Page 275

DISTRIBUTORS FOR THE MARITIME AND PORT AUTHORITY OF SINGAPORE PUBLICATIONS

Amend the following:

Distributor	:	Global Navigation Solutions Pte Ltd
Address	:	2 Boon Leat Terrace #05-02/03/04,
		Harbourside Building 2
		Singapore 119844
Telephone	:	(65) 6270 4060
	:	After Office hours: (65) 9632 5268
Fax	:	(65) 6276 3858
Email	:	sg.info@gnsworldwide.com
Internet Web Site	:	http://www.gnsworldwide.com

IV REPRINT OF RADIO NAVIGATIONAL WARNINGS

The following Radio Navigational Warnings have been shortlisted, as they would be of particular interest to mariners.

TT175

VESSELS IN EAST JOHOR STRAIT ARE ADVISED TO NAVIGATE WITH PARTICULAR ALERTNESS AND CAUTION WHEN NEAR THE PROJECT AREAS OFF PULAU TEKONG, CHANGI AND MALANG PAPAN AS SHALLOW WATER AREAS EXIST. VESSELS ARE REMINDED TO PROCEED AT A SAFE SPEED AND MAINTAIN A PROPER LOOK-OUT, PARTICULARLY FOR TUGS AND BARGES NAVIGATING NEAR THE PROJECT AREAS AND PASSENGER FERRIES CROSSING BETWEEN CHANGI AND PULAU TEKONG AND VICINITY OF PASIR GUDANG.

TT273

ALL VESSELS ARE ADVISED TO NAVIGATE WITH CAUTION, COMPLY WITH THE INTERNATIONAL COLLISION REGULATIONS, MAINTAIN VHF RADIO WATCH AND LISTEN TO TRAFFIC INFORMATION WHEN NAVIGATING IN THE SINGAPORE STRAIT AND PORT WATERS. MARINERS ARE ALSO ADVISED TO KEEP A GOOD LOOKOUT OF FREQUENT FERRIES CROSSING THE SINGAPORE STRAIT.

TT282

RACON DELTA Q(6).LFI.15s IN POSITION 01-03.60N 103-38.85E IS REPORTED UNLIT. ALL VESSELS ARE ADVISED TO NAVIGATE WITH PARTICULAR CAUTION.

TT285 (AMENDED ON 28 DEC 2015 0112Z)

A SUNKEN YACHT IS LOCATED AT POSITION 01-17.83N 104-23.69E. ALL VESSELS ARE ADVISED TO NAVIGATE WITH PARTICULAR CAUTION.

TT292 (AMENDED 01 FEB 2016 0124UTC)

TWO WRECKS ARE LOCATED AT 01-12.39N 103-54.15E AND 01-12.81N 103-54.90E IN THE EAST BOUND LANE OF SINGAPORE STRAIT. AN EMERGENCY WRECK MARKING BUOY WITH A LIGHT CHARACTERISTIC OF ALTERNATING BLUE YELLOW 3 SECONDS HAS BEEN INSTALLED AT POSN 01-12.70N 103-54.52E IN THE EAST BOUND LANE OF THE SINGAPORE STRAIT. MARINERS ARE ADVISED TO NAVIGATE WITH CAUTION.

TT296

CS 'ASEAN PROTECTOR' WILL BE CARRYING OUT UNDERWATER CABLE LAYING OPERATIONS AT THE FOLLOWING COORDINATES:

FROM WAYPOINT 1 01-17.158N 103-36.957E
 TO WAYPOINT 2 01-16.597N 103-36.351E
 TO WAYPOINT 3 01-15.776N 103-36.134E
 TO WAYPOINT 4 01-14.888N 103-36.068E
 TO WAYPOINT 5 01-13.392N 103-35.931E
 TO WAYPOINT 6 01-10.969N 103-35.703E
 TO WAYPOINT 7 01-10.869N 103-35.648E
 TO WAYPOINT 8 01-10.814N 103-35.574E
 TO WAYPOINT 9 01-10.770N 103-35.399E
 TO WAYPOINT 10 01-10.766N 103-35.301E
 TO WAYPOINT 11 01-10.885N 103-34.189E
 TO WAYPOINT 12 01-11.059N 103-32.913E

VESSEL ARE REQUESTED TO KEEP WELL CLEAR OF THE OPERATIONS AREA.

TT301

DHI-ADCP BUOY WILL BE INSTALLED ON 05 FEB 2016 IN POSN 01-09.501N 103-44.599E. LIGHT CHARACTERISTIC, FL.Y.4S. COLOUR SHAPE, YELLOW PILLAR. THE BUOY IS EXPECTED TO BE IN PLACE FOR AT LEAST 6 MONTHS. VESSELS ARE ADVISED TO NAVIGATE WITH PARTICULAR CAUTION.

TT309

NEA CHG CHANGI BUOY FL Y 4S IN POSITION 01-20.7N 104-04.97E IS REPORTED UNLIT.

IV
REPRINT OF RADIO NAVIGATIONAL WARNINGS

TT310

CS FU HAI WILL BE CARRYING OUT A) PRE-LAY GRAPNEL RUN/ROUTE CLEARANCE (PLGR/RC) WORKS AND CABLE INSTALLATION & BURIAL (CIB) WORKS ON SMWS CABLE SYSTEM AT THE FOLLOWING WAYPOINTS FROM 28TH FEB TO 1ST MAR 2016:

Point 1 (Per Chartlet) 01-11.059N 103-32.913E

Point 2 (Per Chartlet) 01-12.920N 103-24.850E

Point 3 (Per Chartlet) 01-14.550N 103-19.300E

VESSEL ARE REQUESTED TO KEEP WELL CLEAR OF THE OPERATIONS AREA.

TT961

VESSELS INTENDING TO CROSS THE TRAFFIC SEPARATION SCHEME (TSS) OR PRECAUTIONARY AREAS IN THE SINGAPORE STRAIT DURING THE HOURS OF DARKNESS ARE RECOMMENDED TO DISPLAY THE NIGHT SIGNALS CONSISTING OF 3 ALL ROUND GREEN LIGHTS IN A VERTICAL LINE AS DETAILED IN MARITIME AND PORT AUTHORITY OF SINGAPORE'S PORT MARINE CIRCULAR, 02 OF 2011 DATED 30 MAY 2011.

SR123 (AMENDED ON 200330Z)

SEA ROBBERIES ARE REPORTED IN THE SINGAPORE STRAIT, ALL VESSELS ARE REMINDED TO MAINTAIN A PROPER LOOK-OUT AND REPORT ANY SUSPICIOUS CRAFT TO VTIS SINGAPORE.

ISSUED BY SINGAPORE PORT OPERATIONS CONTROL CENTRE (as at 28th Feb 2016)

V
EXTRACT OF ADMIRALTY NOTICES TO MARINERS
FOR DUAL-BADGED CHARTS

These notices can also be accessed directly from UKHO Website:

<http://www.ukho.gov.uk/ProductsandServices/MaritimeSafety/Pages/NMPublic.aspx>

692* SINGAPORE - Pasir Panjang Ferry Terminal - Light. Dolphin.

Source: Maritime and Port Authority of Singapore

Chart 4034 [*previous update 5276/15*] WGS84 DATUM

Delete	★ Fl.Y.2,5s Dn	1° 16′.121N., 103° 47′.736E.
--------	----------------	------------------------------

Chart 4035 [*previous update 5449/15*] WGS84 DATUM

Delete	★ Fl.Y.2,5s Dn	1° 16′.121N., 103° 47′.736E.
--------	----------------	------------------------------

Chart 4040 [*previous update 204/16*] WGS84 DATUM

Delete	★ Fl.Y	1° 16′.12N., 103° 47′.74E
--------	--------	---------------------------

Chart 4041 [*previous update 5276/15*] WGS84 DATUM

Delete	★ Fl.Y	1° 16′.12N., 103° 47′.74E
--------	--------	---------------------------

Updated to Admiralty Notices to Mariners Edition No. 09 of 2016 dated 3rd March 2016

SINGAPORE ENC DISTRIBUTORS

ENC DISTRIBUTOR	ADDRESS	TEL/FAX /EMAIL/WEBSITE
ChartWorld GmbH	Atlantic Haus, Zirkusweg 1 D-20359 Hamburg Germany	Tel: +49 40 853 58 6942 Fax: +49 40 853 58 6949 Email: sales@chartworld.com
ChartWorld Asia Pacific Pte Ltd.	Frontech Centre 07-01 15 Jalan Kilang Barat Singapore 159357	Tel: +65 6513 3500 Website: http://www.chartworld.com http://www.ecdis-as-a-service.com
Global Navigation Solutions Pte Ltd	2 Boon Leat Terrace #05-02/03/04, Harbourside Building 2 Singapore 119844	Tel: +65 6270 4060 Fax: +65 6276 3858 Email: sg.info@gnsworldwide.com Website: www.gnsworldwide.com
Maritime Information Systems (MARIS)	52, Telok Blangah Road #01-06 Telok Blangah House Singapore 058809	Tel: +65 6276 1472 Fax: +65 6276 1473 Email: : support@maris.sg Website: http://www.maris.no
Maritime Information Systems AS (MARIS)	Danholmen 25, 3128 Notteroy Norway	Tel: +47 33 30 42 50 Fax: +47 33 30 42 51 Email: : sales@maris.no Website: http://www.maris.no
Motion Smith	15 Jalan Kilang Barat #08-01/05 Frontech Centre Singapore 159357	Tel: +65 6220 5098 Fax: +65 6225 4902 Email: sales@motsmith.com Website: http://www.motsmith.com
Transas Marine Pacific Pte Ltd	Cyber Centre 16/18 Jalan Kilang Barat Off Jalan Bukit Merah Singapore 159358	Tel: +65 6271 0200 Fax: +65 6271 7300 Email: navigation.asia@transas.com Website: http://www.transas.com
Japan Hydrographic Association (Electronic Charts Division)	Daiichi Sogo Bldg, 6F 1-6-6, Hanedakuko, Ota-ku Tokyo 144-0041, Japan	Tel: +81 3 5708 7093 Fax: +81 3 5708 7094 Email: shimizu-6kj@jha.jp Website: http://www.jha.or.jp/en/jha/
Jeppesen Norway AS	P.O Box 212 , N-4371 Egersund Norway	Tel: +47 51 46 4700 Fax: +47 51 46 4701 Email: license.marine@jeppesen.com Website : http://www.jeppesen.com/marine
PRIMAR STAVANGER	Lervigsveien 36, P.O Box 60 N-4001 Stavanger, Norway	Tel: +47 51 93 9500 Fax: +47 51 93 9501 Email: sales@ecc.no Website : http://www.primar.no
The United Kingdom Hydrographic Office	Admiralty Way, Taunton Somerset, TA1 2DN United Kingdom	Tel: +44 1823 33 7900 Fax: +44 1823 28 4077 Emails: ENCS.SalesReports@ukho.gov.uk Website: http://www.ukho.gov.uk

Chart Distributors for the Maritime and Port Authority of Singapore
Nautical Charts and Publications

Please approach any of the Chart Distributors to purchase the Singapore Nautical Charts and Publications.

CHART DISTRIBUTORS	ADDRESS	TEL/FAX/EMAIL/WEBSITE
Chartco (Singapore) Pte Ltd	896 Dunearn Road #03-05 Sime Darby Centre Singapore 589472	Tel: +65 6545 9880 Ext 65285 Fax: +65 6545 8892 Email: leslie.khoo@chartco.com Website: http://www.chartco.com
Cornes (Singapore) Pte Ltd	10 Anson Road #23-06/6A International Plaza Singapore 079903	Tel: +65 6223 8320 Fax: +65 6223 8321 Email: sales9850@cspl.sg Website: http://www.cornes-charts.com
E.W. Liner Charts & Publications Pte Ltd	100, Pasir Panjang Road #05-10 Singapore 118518	Tel: +65 6323 0773 Fax: +65 6323 0775 Email: sales@ewliner.com Website: http://www.ewliner.com
Global Navigation Solutions Pte Ltd	2 Boon Leat Terrace #05-02/03/04, Harbourside Building 2 Singapore 119844	Tel: +65 6270 4060 (After office hours: +65 9632 5268) Fax: +65 6276 3858 Email: sg.info@gnsworldwide.com Website: www.gnsworldwide.com
Motion Smith	15 Jalan Kilang Barat #08-01/05 Frontech Centre Singapore 159357	Tel: +65 6220 5098 (After office hours: +65 8163 9993) Fax: +65 6225 4902 Email: sales@motsmith.com Website: http://www.motsmith.com

HYDROGRAPHIC NOTE - Instructions

1. Mariners are requested to notify the Chief Hydrographer, Maritime and Port Authority of Singapore, when new or suspected dangers to navigation are discovered, changes are observed in aids to navigation or where corrections to nautical publications may be necessary. Reports, which cannot be confirmed or are lacking in certain details should not be withheld.
2. Any ambiguities of time, positioning and depth should be stressed and any firm expectation of being able to check the information provided on a following voyage should be mentioned.
3. Mariners using satellite position fixing systems, eg. GPS, should provide details of equipment and datum used (where applicable). Where bearings (true or magnetic) are taken visually or by radar to fix a position, it should include more than two objects in order to provide a check on its accuracy. A position may also be defined by bearing and distance from a conspicuous object eg. beacon, lighthouse etc.
4. The note should include a tracing or a digital image of the chart used and the details should be clearly marked.
5. Echo sounders frequently register greater depths than the advertised maximum depth for the equipment, eg. a trace appearing at 50 metres may be in fact be 550 metres or even 1050 metres for equipment whose maximum depth is 500 metres. Erroneous depths caused by 2nd transmission error can usually be recognised by the following:
 - (a) the tracing being weaker than normal for the depth registered,
 - (b) the trace appearing to pass through the transmission line,
 - (c) the feathery nature of the trace.
6. Upon receipt of a hydrographic note, a Notice to Mariners may be issued. The sender's vessel or name is quoted as the source unless the same information is also received in foreign Notices to Mariners.
7. Reports of shoals, uncharted dangers and defects in aids to navigation may also be made to the appropriate Singapore Port Operations Control Centre on VHF Channels 10, 12, 14, 68 or 73.

HYDROGRAPHIC NOTE

To:

Chief Hydrographer
Maritime and Port Authority of Singapore
7B Keppel Road #20-00 Tanjong Pagar Complex
Singapore 089055

Tel : (65) 6325 2027
Fax : (65) 6226 1076
Email : hydrographic@mpa.gov.sg

Sender's Contact Details :

Date :

Name of Vessel :

Address of Sender :

Tel : Fax :

Email :

Nature of Observation :

General Location :

Subject :

Position : Lat. Long.

Charts Used :

Date & Time of Observation :

Details :

.....

.....

Attachment :

Equipment Used :

Type of Position Fixing : GPS / DGPS Others :

Type of Echo Sounder :

Name and Signature :

Ship's/Company's Stamp :