



SINGAPOREAN NOTICES TO MARINERS

SECTION	CONTENT	Page
I	Index of Charts & Publications	3
II	New Charts & Publications	11
	Notices to Mariners and Chart Corrections	17
	Temporary and Preliminary Notices	18
III	Navigational Information	21
	Amendments to Publications	22
IV	Reprint of Radio Navigational Warnings	24
V	Extract of Admiralty Notices to Mariners for Dual-Badged Charts	25

The monthly Notices to Mariners contain information required to keep charts and publications published by the Hydrographic Department, Maritime and Port Authority of Singapore up-to-date.

Mariners are requested to notify the Chief Hydrographer, Maritime and Port Authority of Singapore, immediately of the discovery of new or suspected dangers to navigation, observed changes to aids to navigation and ways Singaporean Charts and Publications can be improved. The Hydrographic Note on the back page should be used for this purpose.

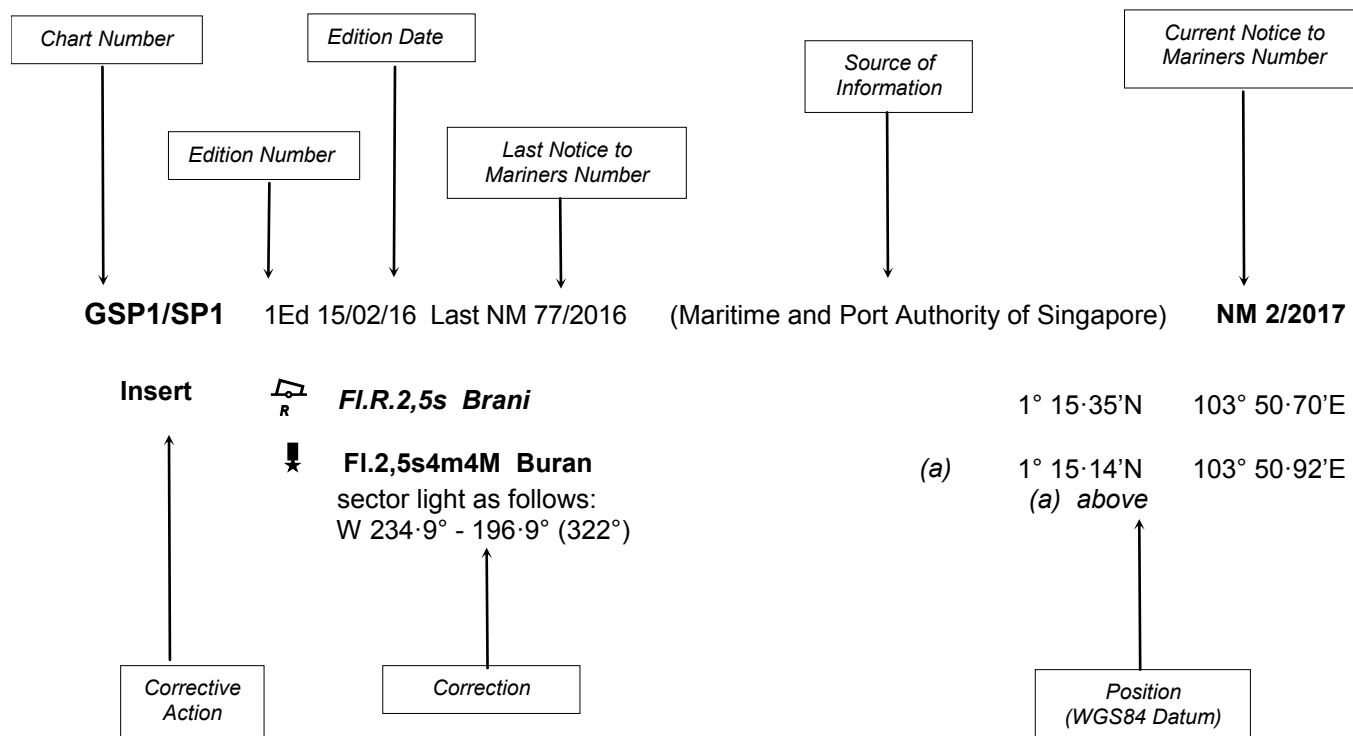
The monthly Singaporean Notices to Mariners can be accessed directly from the MPA website:

<http://www.mpa.gov.sg/web/portal/home/port-of-singapore/circulars-and-notices/singapore-notices-to-mariners-ntm>

Hydrographic Department
Maritime and Port Authority of Singapore
7B Keppel Road
#20-00 Tanjong Pagar Complex
Singapore 089055
Tel : (65) 6325 2027
Fax : (65) 6226 1076
Email : hydrographic@mpa.gov.sg
Website : www.mpa.gov.sg

EXPLANATION OF FORMAT

The elements of a typical chart correction are explained below.



Notes:

a) Notice to Mariners number followed by:

T indicates a Temporary Notice (eg. **NM 3T/2017**).

P indicates a Preliminary Notice (eg. **NM 4P/2017**).

b) Bearings are true reckoned clockwise from 000° to 359°; those relating to lights are from seaward.

c) Heights and elevations are above Mean High Water Springs.

I
INDEX OF CHARTS AND PUBLICATIONS

INDEX OF AFFECTED CHARTS

DESCRIPTION	NOTICE NO.	PAGE NO.
Index of Singaporean Charts	-	3, 4
Index of Dual-Badged Charts	-	5 to 8
Index of Singapore Electronic Navigational Chart	-	9
Index of Malacca and Singapore Straits Electronic Navigational Chart	-	10
New Charts and Publications	-	11 to 17
Singaporean Chart 202	18, 19,	17
Singaporean Chart 502	20	17
Singaporean Chart 503	18	17
Temporary and Preliminary Notices	*21T, 22P, 23P	18 to 20
Singapore Port Marine Notices/Circulars	*24	21
Amendments to Publications	*25	22, 23
Reprint of Radio Navigational Warnings	-	24
Extract of Admiralty Notices to Mariners for Dual-Badged Charts	-	25
Singapore Electronic Navigational Chart Distributors	-	26
Chart Distributors for the Maritime and Port Authority of Singaporean Charts and Publications	-	27

*Source: Maritime and Port Authority of Singapore

I
INDEX OF CHARTS AND PUBLICATIONS

INDEX OF NOTICES

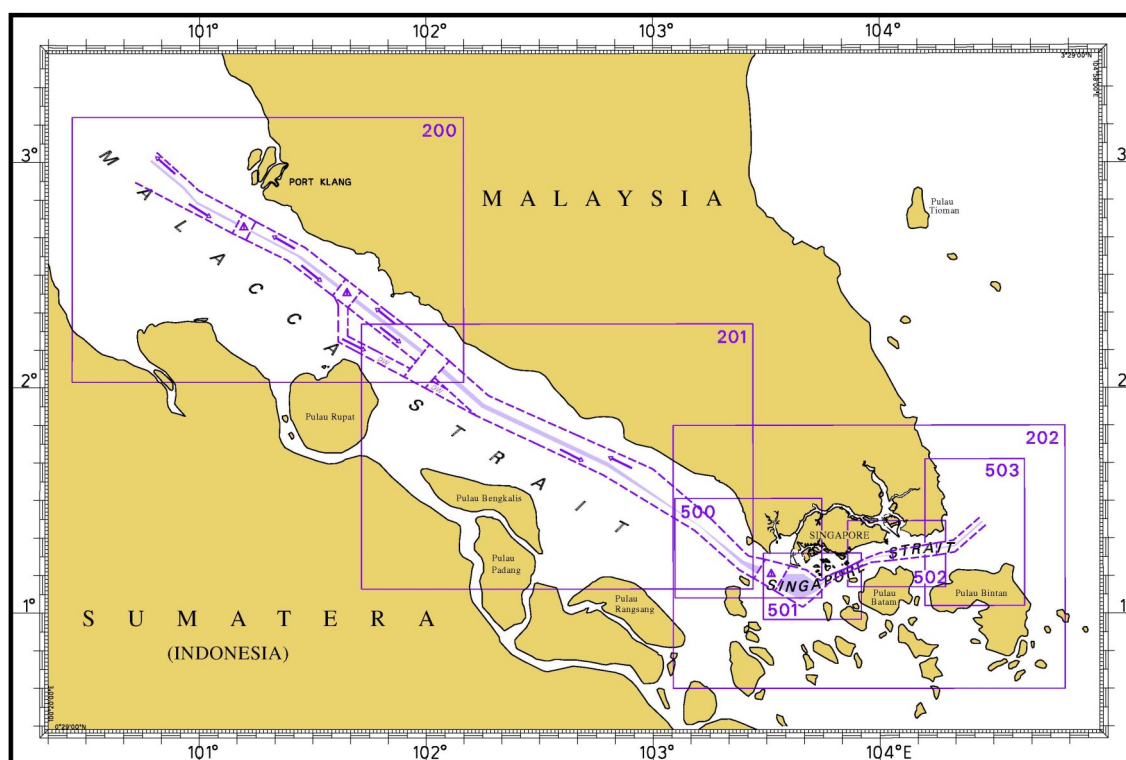
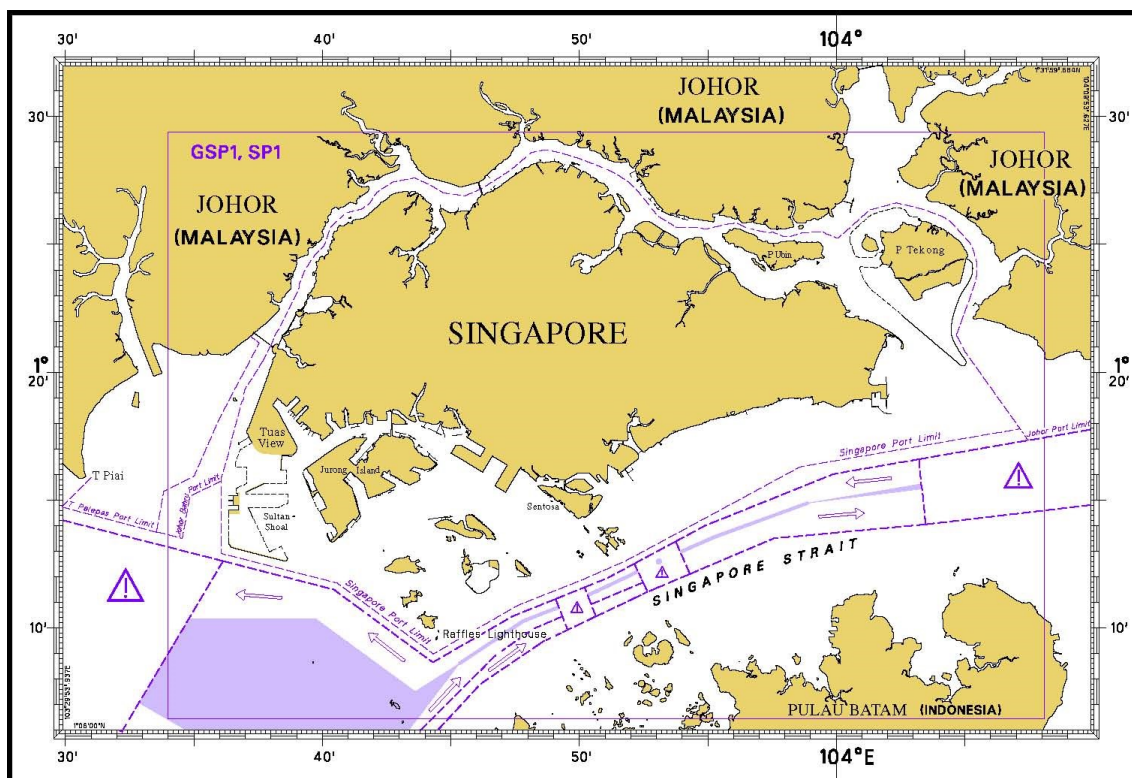
NOTICE NO.	DESCRIPTION	PAGE NO.
-	Index of Singaporean Charts	3, 4
-	Index of Dual-Badged Charts	5 to 8
-	Index of Singapore Electronic Navigational Chart	9
-	Index of Malacca and Singapore Straits Electronic Navigational Chart	10
-	New Charts and Publications	11 to 17
18, 19	Singaporean Chart 202	17
20	Singaporean Chart 502	17
18	Singaporean Chart 503	17
*21T, 22P, 23P	Temporary and Preliminary Notices	18 to 20
*24	Singaporean Port Marine Notices/Circulars	21
*25	Amendment to Publications	22, 23
-	Reprint of Radio Navigational Warnings	24
-	Extract of Admiralty Notices to Mariners for Dual-Badged Charts	25
-	Singapore Electronic Navigational Chart Distributors	26
-	Chart Distributors for the Maritime and Port Authority of Singaporean Charts and Publications	27

*Source: Maritime and Port Authority of Singapore

I

INDEX OF CHARTS AND PUBLICATIONS

INDEX OF SINGAPOREAN CHARTS



Notes:

Singaporean Charts are available through our Print-On-Demand (POD) Chart Service. Print-On-Demand (POD) Charts are the most up-to-date paper nautical charts printed for navigational use. These nautical charts are produced in accordance with the International Hydrographic Organization (IHO) chart specifications. All Singaporean Charts are continually updated to the latest Notices to Mariners before they are printed and sold to users.

I

INDEX OF CHARTS AND PUBLICATIONS

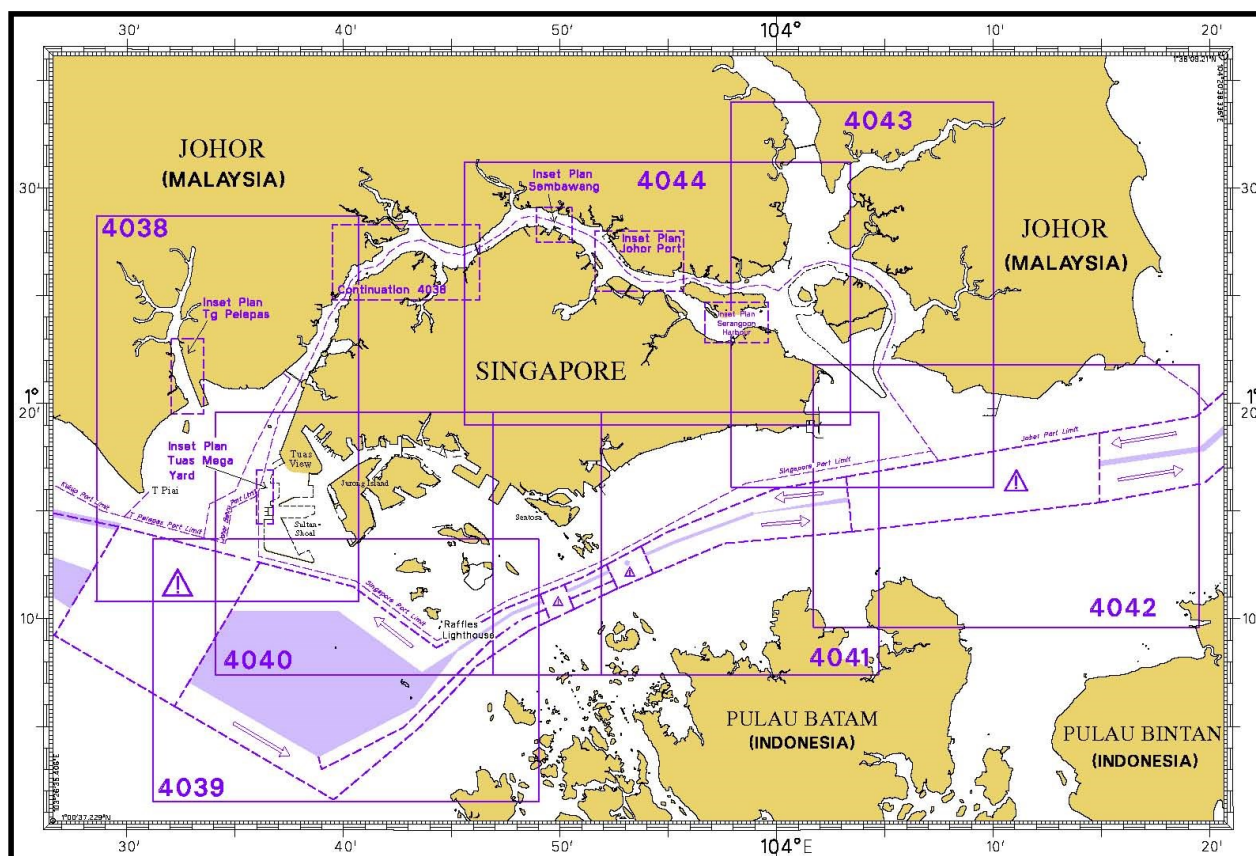
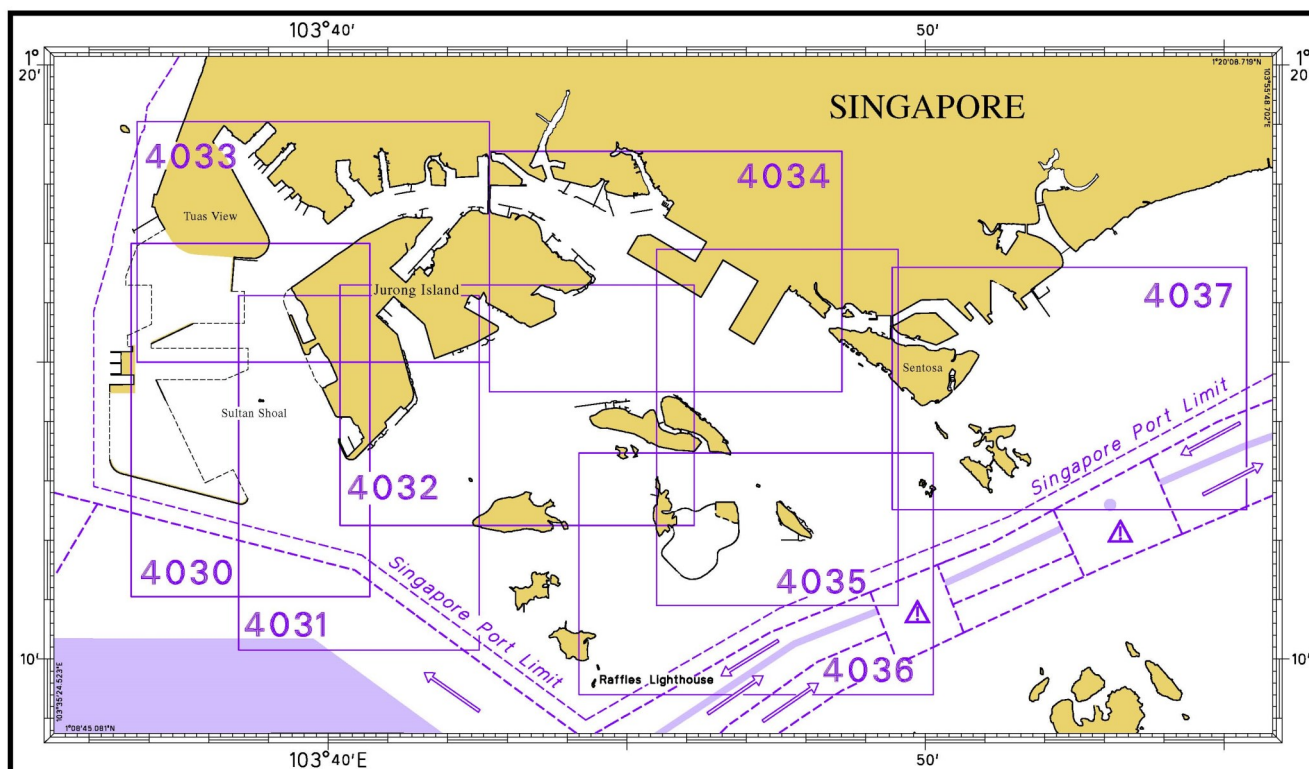
SINGAPOREAN CHARTS

Chart No.	Chart Title	Scale 1:	Date Published of Latest Edition
GSP1	Anchorage and Aids to Navigation (with Area Reference)	65 000	15/02/2016
SP1	Anchorage and Aids to Navigation	65 000	15/02/2016
200	Malacca Strait - Port Klang to Tanjung Keling	200 000	01/09/2015
201	Malacca Strait - Tanjung Keling to Western Entrance of Singapore Strait	200 000	15/08/2014
202	Singapore Strait	200 000	15/09/2016
500	Malacca and Singapore Straits - Pulau Pisang to Raffles Lighthouse	75 000	26/09/2013
501	Singapore Strait - Western Part	50 000	01/09/2015
502	Singapore Strait - Eastern Part	50 000	01/09/2015
503	South China Sea - Eastern Approaches and Entrance to Singapore Strait	75 000	15/08/2014
-	Charts for Small Craft - Singapore Port Waters and Approaches	10 000 to 200 000	January 2016
1	Symbols Abbreviations Terms and S57 Objects used on Singapore Nautical and Electronic Navigational Charts Available for download at MPA website: http://www.mpa.gov.sg/web/portal/home/publications/chart-symbols-and-abbreviations	-	28/07/2011

I

INDEX OF CHARTS AND PUBLICATIONS

DUAL-BADGED CHARTS



I
INDEX OF CHARTS AND PUBLICATIONS

DUAL-BADGED CHARTS

Chart No.	Chart Title	Scale 1:	Date Published of Latest Edition
4030	Port of Singapore West Jurong Anchorages and Temasek Fairway	10 000	17/03/2016
4031	Port of Singapore Western Approaches to Jurong Island	10 000	17/03/2016
4032	Port of Singapore Sinki Fairway	10 000	04/08/2016
4033	Port of Singapore Tuas Bay, West Jurong Channel and Pesek Basin	10 000	17/03/2016
4034	Port of Singapore East Jurong Channel, Pasir Panjang Terminal and West Keppel Fairway	10 000	04/08/2016
4035	Port of Singapore Western Anchorages, Jong Fairway and Cruise Bay	10 000	28/05/2015
4036	Port of Singapore Raffles Lighthouse to The Sisters	10 000	28/05/2015
4037	Port of Singapore Keppel Harbour, Tanjong Pagar Terminal and Approaches	10 000	28/05/2015
4038	Malaysia and Singapore Johor Strait - Western Part	30 000	25/02/2016
4039	Indonesia, Singapore and Malaysia Western Approaches to Main Strait	30 000	24/04/2014
4040	Singapore, Indonesia and Malaysia Tuas View to Pulau Sakijang Bendera (St. John's Island)	30 000	27/08/2015
4041	Singapore and Indonesia Pulau Sebarok to Changi	30 000	27/08/2015

I
INDEX OF CHARTS AND PUBLICATIONS

DUAL-BADGED CHARTS

Chart No.	Chart Title	Scale 1:	Date Published of Latest Edition
4042	Indonesia, Malaysia and Singapore Changi to Pulau Mungging and Tanjung Buntan to Tanjung Tondang	30 000	24/04/2014
4043	Malaysia and Singapore Kuala Johor and Sungai Johor	30 000	16/06/2016
4044	Singapore and Malaysia Johor Strait - Eastern Part	30 000	16/06/2016

SINGAPOREAN PUBLICATIONS

Item	Title	Date Published of Latest Edition
1	Singapore Tide Tables Year 2017	09/09/2016
2	Singapore Port Information 2016/2017	04/01/2016

I

INDEX OF CHARTS AND PUBLICATIONS

DUAL-BADGED PORT APPROACH GUIDES

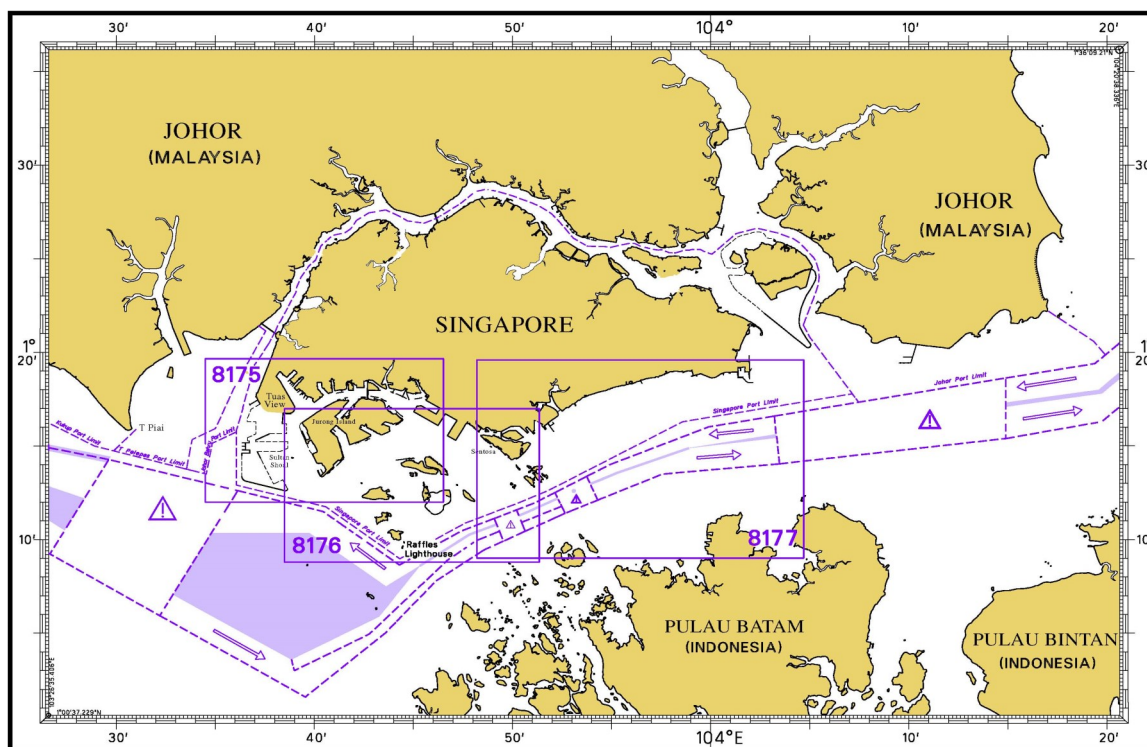
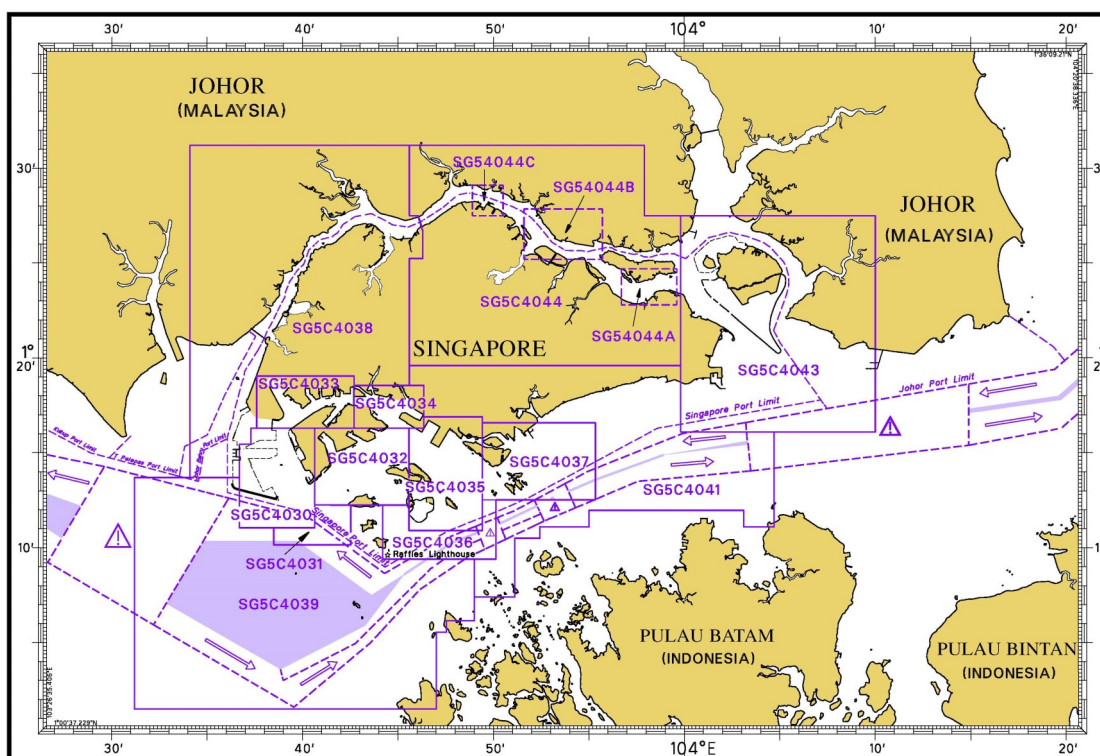


Chart No.	Chart Title	Scale 1:	Date Published of Latest Edition
8175	Port Approach Guide Singapore, Tuas View to Pasir Panjang Terminal including Jurong Channels	21 500	15/09/2016
8176	Port Approach Guide Singapore, Sinki Fairway to Southern Fairway	23 000	15/09/2016
8177	Port Approach Guide Singapore, Southern Fairway to Changi	30 000	15/09/2016

Note : The full range of Admiralty Port Approach guides is available from the Admiralty Chart Agents. To find an Admiralty Chart Agent, please visit : <http://www.admiralty.co.uk/how-to-buy>

I

INDEX OF CHARTS AND PUBLICATIONS



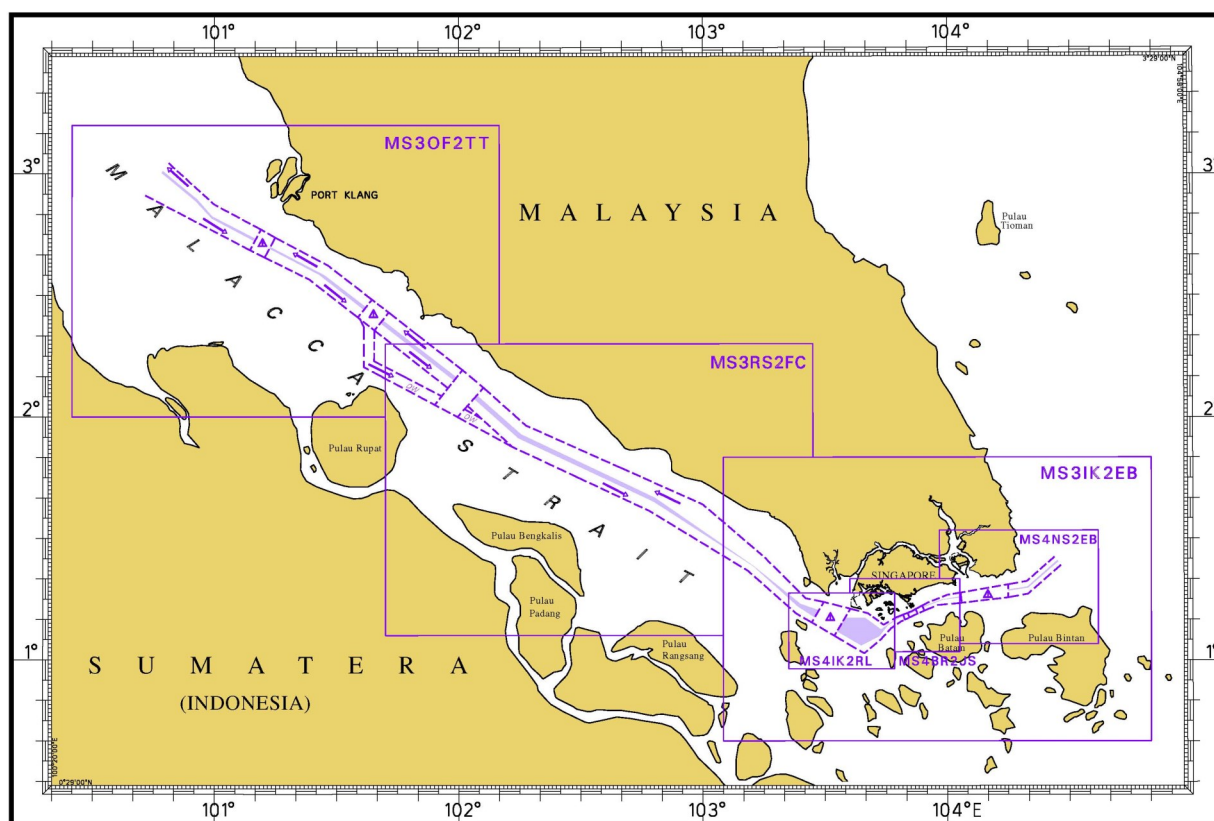
SINGAPORE ELECTRONIC NAVIGATIONAL CHART (ENC)

ENC Name	ENC Coverage	ENC Edition
SG5C4030	West Jurong Anchorages and Temasek Fairway	9th Edition (17/03/2016)
SG5C4031	Western Approaches to Jurong Island	8th Edition (17/03/2016)
SG5C4032	Sinki Fairway	11th Edition (4/08/2016)
SG5C4033	Tuas Bay, West Jurong Channel and Pesek Basin	9th Edition (17/03/2016)
SG5C4034	East Jurong Channel, Pasir Panjang Terminal and West Keppel Fairway	14th Edition (4/08/2016)
SG5C4035	Western Anchorages, Jong Fairway and Cruise Bay	18th Edition (4/08/2016)
SG5C4036	Raffles Lighthouse to The Sisters	9th Edition (28/05/2015)
SG5C4037	Keppel Harbour, Tanjong Pagar Terminal and Approaches	9th Edition (28/05/2015)
SG5C4038	Johor Strait - Western Part	9th Edition (25/02/2016)
SG5C4039	Western Approaches to Main Strait	8th Edition (27/08/2015)
SG5C4041	Pulau Sebarok to Changi	9th Edition (27/08/2015)
SG5C4043	Kuala Johor	12th Edition (16/06/2016)
SG5C4044	Johor Strait - Eastern Part	12th Edition (16/06/2016)
SG54044A	Serangoon Harbour	3rd Edition (16/06/2016)
SG54044B	Pelabuhan Johor (Johor Port)	3rd Edition (16/06/2016)
SG54044C	Sembawang	3rd Edition (16/06/2016)

The latest edition of the Singapore ENC covering Singapore Waters and their approaches can be found in the MPA website:
<http://www.mpa.gov.sg/web/portal/home/port-of-singapore/port-operations/charts-tidal-information-aids-to-navigation-hydrography/nautical-charts/singapore-electronic-navigational-chart-enc>

I

INDEX OF CHARTS AND PUBLICATIONS



MALACCA AND SINGAPORE STRAITS **ELECTRONIC NAVIGATIONAL CHART (MSS-ENC)**

ENC Name	ENC Coverage	ENC Edition
MS3OF2TT	One Fathom Bank to Tanjung Keling	5th Edition (15/11/2016)
MS3RS2FC	Raleigh Shoal to Fair Channel	7th Edition (15/11/2016)
MS3IK2EB	Iyu Kechil to Eastern Bank	7th Edition (15/11/2016)
MS4IK2RL	Iyu Kechil to Raffles Lighthouse	8th Edition (15/11/2016)
MS4BR2JS	Buffalo Rock to Johor Shoal	9th Edition (15/11/2016)
MS4NS2EB	Nongsa to Eastern Bank	8th Edition (15/11/2016)

For further information, please contact:
Japan Hydrographic Association (JHA)
Email: enc-support@jha.jp

Website: http://www.jha.or.jp/en/jha/purchase/distributors_world.html

II NEW CHARTS AND PUBLICATIONS

NEW EDITION SINGAPOREAN CHARTS TO BE PUBLISHED ON 1ST MARCH 2017

Chart Number	:	*GSP1
Title	:	Anchorage and Aids to Navigation
Coverage	:	Lat 01° 06-43' N 01° 29-40' N Long 103° 34-00' E 104° 08-10' E
Scale	:	1 : 65 000
Date Published	:	1 st March 2017
Size of Chart	:	973.2 x 651.3 mm
Description	:	This new edition includes new changes to aids to navigation, working areas, submarine cables, depth contours from the latest surveys covering west of Tuas View Reclamation, West Johor Strait, Temasek Fairway, West Jurong Channel, East Jurong Channel, Pasir Panjang, West Keppel Fairway, Western Anchorages, Buran Channel, East Keppel Fairway, south of St John Island, East Johor Strait and around Pulau Tekong.
		The existing chart of the same number published on 15 th February 2016 will be superseded.

*This chart is provided with a grid reference.

Chart Number	:	SP1
Title	:	Anchorage and Aids to Navigation
Coverage	:	Lat 01° 06-43' N 01° 29-40' N Long 103° 34-00' E 104° 08-10' E
Scale	:	1 : 65 000
Date Published	:	1 st March 2017
Size of Chart	:	973.2 x 651.3 mm
Description	:	This new edition includes new changes to aids to navigation, working areas, submarine cables, depth contours from the latest surveys covering west of Tuas View Reclamation, West Johor Strait, Temasek Fairway, West Jurong Channel, East Jurong Channel, Pasir Panjang, West Keppel Fairway, Western Anchorages, Buran Channel, East Keppel Fairway, south of St John Island, East Johor Strait and around Pulau Tekong.
		The existing chart of the same number published on 15 th February 2016 will be superseded.

II NEW CHARTS AND PUBLICATIONS

NEW EDITION DUAL BADGED CHARTS TO BE PUBLISHED ON 2ND MARCH 2017

Chart Number	:	4030
Title	:	Port of Singapore West Jurong Anchorages and Temasek Fairway
Coverage	:	Lat 01° 11·05' N 01° 17·00' N Long 103° 36·70' E 103° 40·70' E
Scale	:	1 : 10 000
Date Published	:	2 nd March 2017
Size of Chart	:	742.0 x 1096.5 mm
Description	:	This new edition includes updates covering Temasek Fairway, West Jurong Channel, Jurong Anchorages, west of Jurong Island and Sudong Anchorages. The existing chart of the same number published on 17 th March 2016 will be superseded.

Chart Number	:	4031
Title	:	Port of Singapore Western Approaches to Jurong Island
Coverage	:	Lat 01° 10·15' N 01° 16·12' N Long 103° 38·50' E 103° 42·53' E
Scale	:	1 : 10 000
Date Published	:	2 nd March 2017
Size of Chart	:	747.5 x 1100.2 mm
Description	:	This new edition includes updates covering Temasek Fairway, west of Jurong Island, Banyan Basin and Sudong Anchorages. The existing chart of the same number published on 17 th March 2016 will be superseded.

II NEW CHARTS AND PUBLICATIONS

NEW EDITION DUAL BADGED CHARTS TO BE PUBLISHED ON 6TH APRIL 2017

Chart Number	:	4035
Title	:	Port of Singapore Western Anchorages, Jong Fairway and Cruise Bay
Coverage	:	Lat 01° 10-90' N 01° 16-90' N Long 103° 45-50' E 103° 49-54' E
Scale	:	1 : 10 000
Date Published	:	6 th April 2017
Size of Chart	:	749.4 x 1105.7 mm
Description	:	This new edition includes updates covering Pasir Panjang Terminal Phase 3 and 4, East Jurong Channel, Western Anchorages, around Pulau Bukom, west of Pulau Sebarok, Shell SBM area, east of Semakau Dumping Ground, Jong Fairway, west of Sentosa and the Main Strait.
		The existing chart of the same number published on 28 th May 2015 will be superseded.

Chart Number	:	4036
Title	:	Port of Singapore Raffles Lighthouse to The Sisters
Coverage	:	Lat 01° 09-40' N 01° 13-47' N Long 103° 44-20' E 103° 50-13' E
Scale	:	1 : 10 000
Date Published	:	6 th April 2017
Size of Chart	:	1100.0 x 750.1 mm
Description	:	This new edition includes updates covering Jong Fairway, west of Pulau Sebarok, Shell SBM area, east of Semakau Dumping Ground, Raffles Anchorages, Western Quarantine and Immigration Anchorage and the Main Strait.
		The existing chart of the same number published on 28 th May 2015 will be superseded.

II NEW CHARTS AND PUBLICATIONS

NEW EDITION DUAL BADGED CHARTS TO BE PUBLISHED ON 6TH APRIL 2017

Chart Number	:	4037
Title	:	Port of Singapore Keppel Harbour, Tanjong Pagar Terminal and Approaches
Coverage	:	Lat 01° 12·52' N 01° 16·59' N Long 103° 49·40' E 103° 55·34' E
Scale	:	1 : 10 000
Date Published	:	6 th April 2017
Size of Chart	:	1101.8 x 750.1 mm
Description	:	This new edition includes updates covering west of Sentosa, Buran Channel, Western Quarantine and Immigration Anchorage, East Keppel Fairway, Marina South Pier, approaches to East Keppel Fairway, Eastern Corridor and Eastern Fairway.

The existing chart of the same number published on 28th May 2015 will be superseded.

II NEW CHARTS AND PUBLICATIONS

NEW EDITION SINGAPORE ENC TO BE RELEASED ON 2ND MARCH 2017

ENC Name	:	SG5C4030
Title	:	West Jurong Anchorages and Temasek Fairway
Coverage	:	Lat 01° 11'050' N 01° 16'300' N Long 103° 36'700' E 103° 40'640' E
Compilation Scale	:	1 : 8 000
Date Released	:	2 nd March 2017
Description	:	This new edition includes updates covering Temasek Fairway, West Jurong Channel, Jurong Anchorages, west of Jurong Island and Sudong Anchorages.
		The existing cell of the same name released on 17 th March 2016 will be superseded.

ENC Name	:	SG5C4032
Title	:	Sinki Fairway
Coverage	:	Lat 01° 12'250' N 01° 16'300' N Long 103° 40'640' E 103° 45'580' E
Compilation Scale	:	1 : 8 000
Date Released	:	2 nd March 2017
Description	:	This new edition includes updates covering Sinki Fairway and Banyan Basin.
		The existing cell of the same name released on 4 th August 2016 will be superseded.

II NEW CHARTS AND PUBLICATIONS

NEW EDITION SINGAPORE ENC TO BE RELEASED ON 6TH APRIL 2017

ENC Name	:	SG5C4035
Title	:	West Jurong Anchorages, Jong Fairway and Cruise Bay
Coverage	:	Lat 01° 10-900' N 01° 16-900' N Long 103° 45-580' E 103° 49-425' E
Compilation Scale	:	1 : 8 000
Date Released	:	6 th April 2017
Description	:	This new edition includes updates covering Pasir Panjang Terminal Phase 3 and 4, East Jurong Channel, Western Anchorage, around Pulau Bukom, west of Pulau Sebarok, Shell SBM area, east of Semakau Dumping Ground, Jong Fairway, west of Sentosa and the Main Strait.

The existing cell of the same name released on 4th August 2016 will be superseded.

ENC Name	:	SG5C4036
Title	:	Raffles Lighthouse to The Sisters
Coverage	:	Lat 01° 09-400' N 01° 12-520' N Long 103° 44-200' E 103° 50-130' E
Compilation Scale	:	1 : 8 000
Date Released	:	6 th April 2017
Description	:	This new edition includes updates covering Raffles Anchorages and the Main Strait.

The existing cell of the same name released on 28th May 2015 will be superseded.

ENC Name	:	SG5C4037
Title	:	Keppel Harbour, Tanjong Pagar Terminal and Approaches
Coverage	:	Lat 01° 12-520' N 01° 16-590' N Long 103° 49-425' E 103° 55-340' E
Compilation Scale	:	1 : 8 000
Date Released	:	6 th April 2017
Description	:	This new edition includes updates covering east of Sentosa, Buran Channel, Western Quarantine and Immigration Anchorage, East Keppel Fairway, Marina South Pier, approaches to East Keppel Fairway, Eastern Corridor and Eastern Fairway.

The existing cell of the same name released on 28th May

II

NOTICES TO MARINERS AND CHART CORRECTIONS

202	8 Ed 15/09/16 Last NM 6/2017	(Royal Malaysian Navy Notice No. 11/212/16)	NM 18/2017
Insert		1° 19-31'N 104° 24-39'E (Indonesian Notice No. 50/619/16)	NM 19/2017
Insert	★ Fl.5s10M	0° 57-03'N 103° 21-87'E	
<hr/>			
502	7 Ed 1/09/15 Last NM 78/2016	(Admiralty Notice No. 8/868/17)	NM 20/2017
Insert	depth, 9_l , enclosed by 10m contour	(a) 1° 08-48'N 104° 11-43'E	
Delete	depth, 10 , and associated 10m contour, close NW of:	(a) above	
<hr/>			
503	5 Ed 15/08/14 Last NM 4/2017	(Royal Malaysian Navy Notice No. 11/212/16)	NM 18/2017
Insert		1° 19-31'N 104° 24-39'E	
<hr/>			

II

TEMPORARY AND PRELIMINARY NOTICES

*(NM 21T/2017)

Sultan Shoal Lighthouse RACON Inoperative

Remarks : RACON Morse (K) at Sultan Shoal Lighthouse in position Latitude 1° 14·377'N
Longitude 103° 38·884'E is inoperative.

Charts affected : Singaporean GSP1/SP1, 202, 500, 501, Dual Badged BA4030, BA4031, BA4038
and BA4040.

Publication affected : Singapore Port Information 2016/2017.

*Source: Maritime and Port Authority of Singapore

II

TEMPORARY AND PRELIMINARY NOTICES**(NM 22P/2016)****ASIA-AMERICA CABLE SYSTEM (AAG) - CABLE REPAIR OPERATIONS**

- Description** : Submarine cable repair operations for the AAG cable shall be executed in the west-bound lane of the Traffic Separation Scheme off Tanjung Setapa/Pulau Bintan (STRAITREP Sector 9).
- Work vessel** : **CS Cable Retriever**
- Call Sign** : **S6OM**
- Planned Dates of Operation** : With effect from 11th March to 20th March 2017. The operation is conducted on a 24 hour basis, including Sundays and Public holiday.

1. Working Route

Position	Co-ordinates (WGS84)	
	Latitude (N)	Longitude (E)
1	01° 17·137'	104° 09·155'
2	01° 17·179'	104° 09·363'
3	01° 17·153'	104° 09·467'
4	01° 17·077'	104° 09·581'
5 (Estimated Fault)	01° 17·002'	104° 09·659'
6	01° 16·979'	104° 09·698'

2. Charts affected: Singaporean 202, 502, Dual Badged BA4042 and BA4043
3. Caution: Mariners are advised
a) to navigate with caution
b) to keep clear and provide a wide berth when approaching the working route.
4. Navigational warning broadcast will be promulgated by Singapore VTIS on VHF CH 09 and NAVTEX. Mariners are to maintain a listening watch.
- Source : Vanda Marine Services Pte Ltd

II

TEMPORARY AND PRELIMINARY NOTICES**(NM 23P/2016)****TATA INDICOM INDIA-SINGAPORE CABLE SYSTEM (TIISCS) - CABLE REPAIR OPERATIONS**

- Description** : Submarine cable repair operations for the TIISCS cable shall be executed south of the east-bound traffic lane in the Singapore Strait (Main Strait). (STRAITREP Sector 7)
- Work vessel** : **CS Durable or Substitute**
- Call Sign** : **V7D18**
- Planned Dates of Operation** : With effect from 1st March to 31st March 2017. The operation is conducted on a 24 hour basis, including Sundays and Public holiday.

1. The co-ordinates (WGS-84) of the cable fault is located below:

Position	Co-ordinates (WGS84)	
	Latitude (N)	Longitude (E)
1	01° 04·841'	103° 33·686'

2. Charts affected: Singaporean 202, 500, 501 and Dual Badged BA4039
3. Mariners are advised to navigate with caution and give a wide berth.
4. Navigational warning broadcast will be promulgated by Singapore VTIS on VHF CH 09 and NAVTEX. Mariners are to maintain a listening watch.

Source : Monsoon Agencies Pte Ltd

III NAVIGATIONAL INFORMATION

*(NM 24/2017)

SINGAPORE PORT MARINE NOTICES/CIRCULARS

The Port Marine Notices/Circulars shortlisted below would be of particular interest to Mariners. Details and complete list of Port Marine Notices/Circulars are available at this link:

<http://www.mpa.gov.sg/web/portal/home/port-of-singapore/circulars-and-notices>

PMN No.**Subject**

16/2017	Dredging work off western end of Jurong Island
27/2017	Maintenance dredging work in Sungei Pandan
29/2017	Mission Rasi II - Fund raising event at Cruise Bay
30/2017	Soil investigation works in Tuas Reclamation Area and ALGAS Anchorage

PMC No.**Subject**

3/2017	Prohibition of anchoring in the Straits of Malacca and Singapore
4/2017	Water price revisions for shipping customers

*Source: Maritime and Port Authority of Singapore

III AMENDMENTS TO PUBLICATIONS

*(NM 25/2017) UPDATING OF PUBLICATION “SINGAPORE PORT INFORMATION 2016/2017”

DISSEMINATION OF PASSAGE PLAN TO SHIPMASTERS

1. Page 90

Amend the following:

1	<p>To assist shipmasters in planning their vessel's passage in port, the pilotage service Provider (PSA Marine Pte Ltd) provides plans of the pilot's intended passage on their website at:</p> <p>https://www.psamarine.com/quick-links/ordering-our-services/order-pilotage-service/</p>
---	---

Amend the following:

4	<p>For further information, please contact any of the following:</p> <p>MPA</p> <p>Mr Lawrence Koo Tel: +65 6325 2475</p> <p>PSA MARINE PTE LTD</p> <p>Mr Jimmy Koh Tel: +65 6379 9867</p>
---	--

CONTROLLING DEPTHS OF NAVIGATIONAL CHANNELS AND FAIRWAYS

2. Page 109

Amend the following:

LOCATIONS	DEPTHS (m)	REMARKS
Temasek Fairway	15.3	

3. Page 182

Insert the following:

PULAU KEPPEL - KEPPEL MARINA MULTI PURPOSE BERTH (1° 15·8'N, 103° 48·7'E)

Berth	Length of Berth Box	Width of Berth	Depth Alongside (Year Surveyed)	Controlling Depth in Approaches
MKPM	210m	30m	6.2m (2016)	8.9m

DB Charts: 4035

III AMENDMENTS TO PUBLICATIONS

MPA APPOINTED ELECTRONIC NAVIGATIONAL CHART (ENC) DISTRIBUTORS

4. Page 206

Amend the following:

DISTRIBUTOR	ADDRESS	TELEPHONE/ FAX NO./EMAIL/ WEBSITE
Global Navigation Solutions Ltd	2 Boon Leat Terrrace, #05-02/03/04 Harbourside Building 2, Singapore 119844	Tel. No.: +65 6270 4060 Fax No.: +65 6276 3858 Email: sg.support@gnsworldwide.com Website: http://www.gnsworldwide.com.sg
Japan Hydrographic Association	Daiichi Sogo Bldg, 6F 1-6-6, Hanedakuko, Ota-ku Tokyo 144-0041, Japan	Tel. No.: +81 3 5708 7093 Fax No.: +81 3 5708 7094 Email: enc-support@jha.jp Website: http://www.jha.or.jp/en/jha/

*Source: Maritime and Port Authority of Singapore

IV

REPRINT OF RADIO NAVIGATIONAL WARNINGS

The following Radio Navigational Warnings have been shortlisted, as they would be of particular interest to mariners.

TT175

VESSELS IN EAST JOHOR STRAIT ARE ADVISED TO NAVIGATE WITH PARTICULAR ALERTNESS AND CAUTION WHEN NEAR PROJECT AREAS OFF PULAU TEKONG, CHANGI AND MALANG PAPAN AS SHALLOW WATER AREA EXIST. VESSELS ARE REMINDED TO PROCEED AT SAFE SPEED AND MAINTAIN A PROPER LOOKOUT, PARTICULARLY FOR TUGS AND BARGES NAVIGATING NEAR THE PROJECT AREAS AND PASSENGER FERRIES CROSSING BETWEEN CHANGI AND PULAU TEKONG AND VICINITY OF PASIR GUDANG.

TT273

ALL VESSELS ARE ADVISED TO NAVIGATE WITH CAUTION, COMPLY WITH THE INTERNATIONAL COLLISION REGULATIONS, MAINTAIN VHF RADIO WATCH AND LISTEN TO TRAFFIC INFORMATION WHEN NAVIGATING IN THE SINGAPORE STRAIT AND PORT WATERS. MARINERS ARE ALSO ADVISED TO KEEP A GOOD LOOKOUT OF FREQUENT FERRIES CROSSING THE SINGAPORE STRAIT.

TT363

MARINERS ARE REMINDED NOT TO ANCHOR IN ALL AREAS IN THE TSS OF THE STRAITS OF MALACCA AND SINGAPORE AS WELL AS BETWEEN THE LANDWARD LIMITS OF THE TSS AND APPROACHES TO THE PORTS. VESSELS ENTERING ANY PORT IN ANY LITTORAL STATES ARE TO ANCHOR IN THE ANCHORAGES DESIGNATED BY THE RESPECTIVE LITTORAL STATES ONLY.

TT389

NIPAH NORTH CARDINAL BEACON AT APPROXIMATE POSITION LAT 1°10'40"N LONG 103°39'74"E IS REPORTED UNLIT.

TT390

BATU BERHANTI ISOLATED DANGER BUOY IN POSITION LAT 1°11'790"N LONG 103°52'474"E IS REPORTED UNLIT. ALL VESSELS PASSING THE VICINITY ARE ADVISED TO NAVIGATE WITH EXTRA CAUTION.

TT392

A TUG BOAT HARITA BERLIAN 18 REPORTED SANK AT APPROXIMATE POSITION LAT 1°15'76"N LONG 104°06'20"E ON 16 FEB 2017 0800 LOCAL TIME. ALL PASSING VESSELS ARE REQUESTED TO KEEP A GOOD LOOKOUT AND REPORT ANY SIGHTINGS TO VTIS CH 14 OR MRCC SINGAPORE AT TEL: +65 62265539, FAX: +65 62279971 OR E-MAIL: POCC@MPA.GOV.SG.

TT393

CS "LORDBROG" WILL BE CARRYING OUT SUBMARINE CABLE REPAIR OPERATIONS AT SOUTH OF TANJUNG SETAPA IN THE TSS WEST BOUND LANE BOUNDED BY THE FOLLOWING CO-ORDINATES:

A	1° 17'38"N	104° 08'76"E
B	1° 17'66"N	104° 12'10"E
C	1° 17'75"N	104° 12'66"E
D	1° 17'86"N	104° 13'77"E
E	1° 17'29"N	104° 13'77"E
F	1° 17'18"N	104° 12'66"E
G	1° 17'09"N	104° 12'10"E
H	1° 16'42"N	104° 08'91"E

ALL VESSELS ARE ADVISED TO KEEP A LOOKOUT, NAVIGATE WITH CAUTION AND GIVE A WIDE BERTH WHEN PASSING THE OPERATION AREA.

TT961

VESSELS INTENDING TO CROSS THE TRAFFIC SEPARATION SCHEME (TSS) OR PRECAUTIONARY AREAS IN THE SINGAPORE STRAIT DURING HOURS OF DARKNESS ARE RECOMMENDED TO DISPLAY THE NIGHT SIGNALS CONSISTING OF 3 ALL ROUND GREEN LIGHTS IN A VERTICAL LINE AS DETAILED IN MARITIME AND PORT AUTHORITY OF SINGAPORE'S PORT MARINE CIRCULAR, 02 OF 2011 DATED 30 MAY 2011.

SR123

SEA ROBBERIES ARE REPORTED IN THE SINGAPORE STRAIT. ALL VESSELS ARE REMINDED TO MAINTAIN A PROPER LOOK-OUT AND REPORT ANY SUSPICIOUS CRAFT TO VTIS SINGAPORE.

ISSUED BY SINGAPORE PORT OPERATIONS CONTROL CENTRE (as at 26th Feb 2017)

V

EXTRACT OF ADMIRALTY NOTICES TO MARINERS FOR DUAL-BADGED CHARTS

These notices can also be accessed directly from UKHO Website:

<https://www.admiralty.co.uk/maritime-safety-information/admiralty-notices-to-mariners>

327(T)/17 SINGAPORE - Pasir Panjang Terminal NW - Works.

Source: Maritime and Port Authority of Singapore

1. Construction works are taking place at West coast Pier, within an area bounded by the following positions:
 - 1° 17·584'N, 103° 45·623'E
 - 1° 17·603'N, 103° 45·635'E
 - 1° 17·580'N, 103° 45·672'E
 - 1° 17·562'N, 103° 45·660'E

Mariners are advised to keep clear of the works area and to navigate with caution when in the vicinity.
(WGS84 Datum)

Chart affected - 4034

500 SINGAPORE - Kuala Johor - Buoyage.

Source: Maritime and Port Authority of Singapore

Chart 4043 [*previous update 6319/16*] WGS84 DATUM




Insert	 Fl.Y.3s (sync) TK-MB-11	1° 23·26'N 104° 01·21'E
	 Fl.Y.3s (sync) TK-MB-12	1° 23·13'N 104° 01·34'E
	 Fl.Y.10s TK-MB-10	1° 21·78'N 104° 02·94'E
	 Fl.Y.10s TK-MB-9	1° 21·66'N 104° 03·08'E

Chart 4044 [*previous update 6564/16*] WGS84 DATUM

Insert	 Fl.Y.3s (sync) TK-MB-11	1° 23·26'N 104° 01·21'E
	 Fl.Y.3s (sync) TK-MB-12	1° 23·13'N 104° 01·34'E
	 Fl.Y.10s TK-MB-10	1° 21·78'N 104° 02·94'E
	 Fl.Y.10s TK-MB-9	1° 21·66'N 104° 03·08'E

Updated to Admiralty Notices to Mariners No. 8 of 2017 dated 23rd Feb 2017

SINGAPORE ENC DISTRIBUTORS

ENC DISTRBTUTOR	ADDRESS	TEL/FAX/EMAIL/WEBSITE
C-MAP Norway AS	Hovlandsveien 52, 4374, Egersund Norway	Tel: +47 51 46 4700 Fax: +47 51 46 4701 Email: enc@c-map.com Website: http://www.c-map.com
Chartworld GmbH	Atlantic Haus, Zirkusweg 1 D-20359 Hamburg, Germany	Tel: +49 40 853 58 6942 Fax: +49 40 853 58 6949 Email: sales@chartworld.com
Chartworld Asia Pacific Pte Ltd	Frontech Centre #07-01 15 Jalan Kilang Barat Singapore 159357	Tel: +65 6513 3500 Website: http://www.chartworld.com http://www.ecdis-as-a-service.com
Global Navigation Solutions Ltd	2 Boon Leat Terrace #05-02/03/04, Harbourside Building 2 Singapore 119844	Tel: +65 62704060 Fax: +65 62763858 Email: sg.support@gnsworldwide.com Website: www.gnsworldwide.com
Japan Hydrographic Association (Electronic Charts Division)	Daiichi Sogo Bldg, 6F 1-6-6, Hanedakuko, Ota-ku Tokyo 144-0041 Japan	Tel: +81 3 5708 7093 Fax: +81 3 5708 7094 Email: enc-support@jha.jp Website: http://www.jha.or.jp/en/jha/
Maritime Information Systems (MARIS)	52, Telok Blangah Road #01-06 Telok Blangah House Singapore 058809	Tel: +65 6276 1472 Fax: +65 6276 1473 Email: support@maris.sg Website: http://www.maris.no
Maritime Information System AS (MARIS)	Danholmen 25, 3128 Notteroy Norway	Tel: +47 33 30 42 50 Fax: +47 33 30 42 51 Email: sales@maris.no Website: http://www.maris.no
Motion Smith	15 Jalan Kilang Barat #08-01/05 Frontech Centre Singapore 159357	Tel: +65 6220 5098 Fax: +65 6225 4902 Email: sales@motsmith.com Website: http://www.motsmith.com
PRIMAR STAVANGER	Lervigsveien 36, P.O Box 60 N-4001 Stavenger, Norway	Tel: +47 51 93 9500 Fax: +47 51 93 9501 Email: sales@ecc.no Website: http://www.primar.no
Transas Marine Pacific Pte Ltd	Cyber Centre 16/18 Jalan Kilang Barat Off Jalan Bukit Merah Singapore 159358	Tel: +65 6271 0200 Fax: +65 62717300 Email: navigation.asia@transas.com Website: http://www.transas.com
The United Kingdom Hydrographic Office	Admiralty Way, Taunton Somerset, TA1 2DN United Kingdom	Tel: +44 1823 33 7900 Fax: +44 1823 28 4077 Email: ENCS.SalesReports@ukho.gov.uk Website: http://www.ukho.gov.uk

Chart Distributors for the Maritime and Port Authority of Singapore
Charts and Publications

Please approach any of the Chart Distributors to purchase the Singaporean Charts and Publications

CHART DISTRIBUTORS	ADDRESS	TEL/FAX/EMAIL/WEBSITE
Chartco (Singapore) Pte Ltd	896 Dunearn Road #03-05 Sime Darby Centre Singapore 589472	Tel: +65 6545 9880 Ext 65285 Fax: +65 6545 8892 Email: leslie.khoo@chartco.com Website: http://www.chartco.com
Cornes (Singapore) Pte Ltd	10 Anson Road #17-04 International Plaza Singapore 079903	Tel: +65 6223 8320 Fax: +65 6223 8321 Email: sales9850@cspl.sg Website: http://www.cornes-charts.com
E.W. Liner Charts & Publications Pte Ltd	100, Pasir Panjang Road #05-10 Singapore 118518	Tel: +65 6323 0773 Fax: +65 6323 0775 Email: sales@ewliner.com Website: http://www.ewliner.com
Global Navigation Solutions Ltd	2 Boon Leat Terrace #05-02/03/04, Harbourside Building 2 Singapore 119844	Tel: +65 6270 4060 (After office hours: +65 9632 5268) Fax: +65 6276 3858 Email: sg.info@gnsworldwide.com Website: http://www.gnsworldwide.com
Motion Smith	15 Jalan Kilang Barat #08-01/05 Frontech Centre Singapore 159357	Tel: +65 6220 5098 (After office hours: +65 8163 9993) Fax: +65 225 4902 Email: sales@motsmith.com Website: http://www.motsmith.com

HYDROGRAPHIC NOTE - Instructions

1. Mariners are requested to notify the Chief Hydrographer, Maritime and Port Authority of Singapore, when new or suspected dangers to navigation are discovered, changes are observed in aids to navigation or where corrections to nautical publications may be necessary. Reports, which cannot be confirmed or are lacking in certain details should not be withheld.
2. Any ambiguities of time, positioning and depth should be stressed and any firm expectation of being able to check the information provided on a following voyage should be mentioned.
3. Mariners using satellite position fixing systems, eg. GPS, should provide details of equipment and datum used (where applicable). Where bearings (true or magnetic) are taken visually or by radar to fix a position, it should include more than two objects in order to provide a check on its accuracy. A position may also be defined by bearing and distance from a conspicuous object eg. beacon, lighthouse etc.
4. The note should include a tracing or a digital image of the chart used and the details should be clearly marked.
5. Echo sounders frequently register greater depths than the advertised maximum depth for the equipment, eg. a trace appearing at 50 metres may be in fact be 550 metres or even 1050 metres for equipment whose maximum depth is 500 metres. Erroneous depths caused by 2nd transmission error can usually be recognised by the following:
 - (a) the tracing being weaker than normal for the depth registered,
 - (b) the trace appearing to pass through the transmission line,
 - (c) the feathery nature of the trace.
6. Upon receipt of a hydrographic note, a Notice to Mariners may be issued. The sender's vessel or name is quoted as the source unless the same information is also received in foreign Notices to Mariners.
7. Reports of shoals, uncharted dangers and defects in aids to navigation may also be made to the appropriate Singapore Port Operations Control Centre on VHF Channels 10, 12, 14, 68 or 73.

HYDROGRAPHIC NOTE

To:

Chief Hydrographer
Maritime and Port Authority of Singapore
7B Keppel Road #20-00 Tanjong Pagar Complex
Singapore 089055

Tel : (65) 6325 2027
Fax : (65) 6226 1076
Email : hydrographic@mpa.gov.sg

Sender's Contact Details :

Date :

Name of Vessel :

Address of Sender :

Tel : Fax :

Email :

Nature of Observation :

General Location :

Subject :

Position : Lat. Long.

Charts Used :

Date & Time of Observation :

Details :

.....

.....

Attachment :

Equipment Used :

Type of Position Fixing : GPS / DGPS Others :

Type of Echo Sounder :

Name and Signature :

Ship's/Company's Stamp :