



SINGAPOREAN NOTICES TO MARINERS

	CONTENT	Page
I	Index of Charts & Publications Affected	29
II	Charts Corrections New Charts Publications	30
III	Marine Information	32
IV	Reprints of Radio Navigational Warnings	35
V	Reprint of Admiralty Notices to Mariners for Dual Badged Charts	36

The monthly Notices to Mariners contain corrective information affecting charts published by the Hydrographic Department, Maritime and Port Authority of Singapore. The information contained in these Notices should be inserted on the charts affected. Notices under Section II apply only to the particular Singaporean Chart(s) indicated.

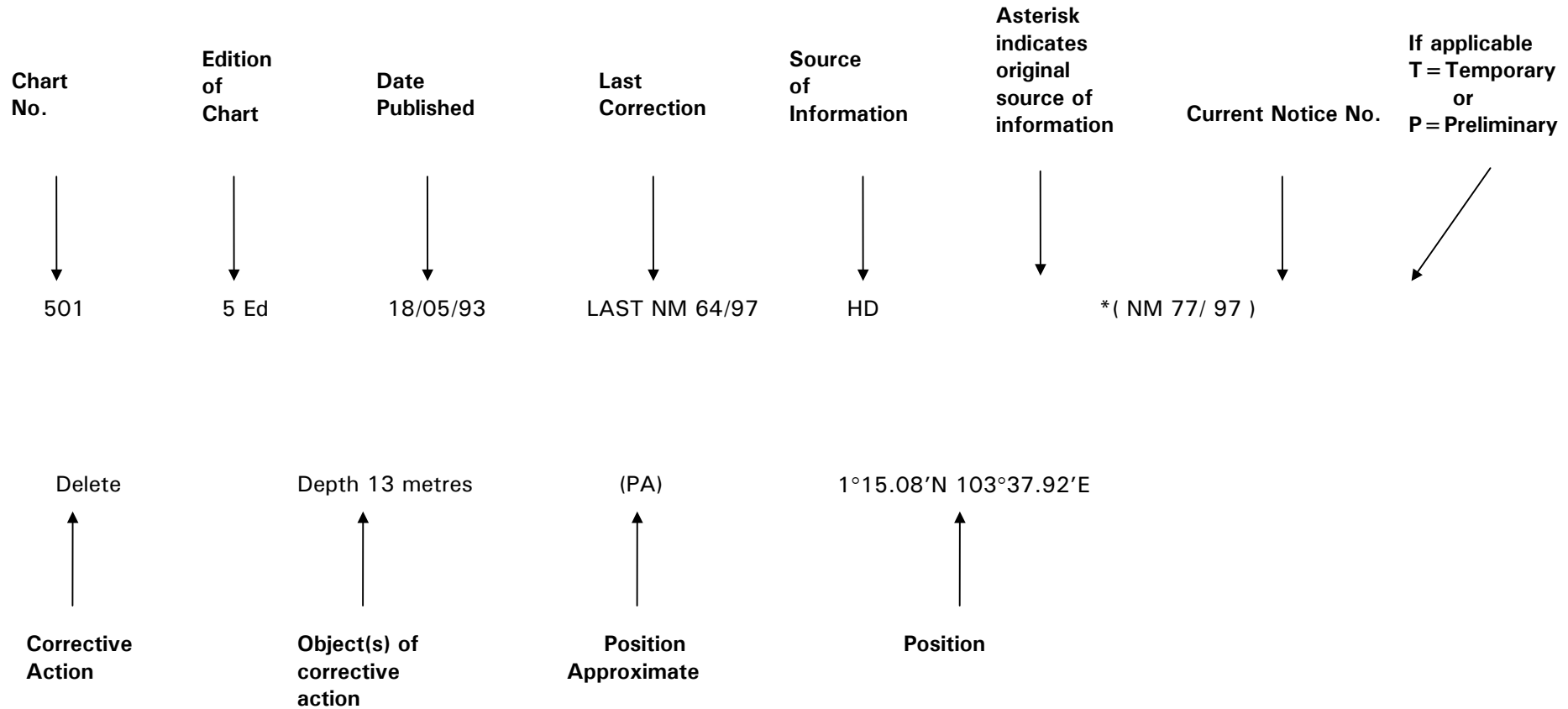
Mariners are requested to notify the Chief Hydrographer, Maritime and Port Authority of Singapore, immediately on the discovery of new dangers or suspected dangers to navigation and of changes or defects in aids to navigation.

This notices can be accessed from the MPA webpage:
<http://www.mpa.gov.sg/infocentre/publications/noticesmari.htm>. Copies of this notices can also be obtained free from the Hydrographic Department, Maritime and Port Authority of Singapore or from Motion Smith telephone number (65) 62205098.

Hydrographic Department
Maritime and Port Authority of Singapore
P.O. Box 313
PSA Building Post Office
Singapore 911141
Tel : (65) 63751550
Fax : (65) 62787646

EXPLANATION OF FORMAT

The elements of a typical chart correction are explained below.



An asterisk (*) preceding a notice number indicates that the information is based on original Singapore source. The capital letter (T) or (P) denotes Temporary or Preliminary respectively.

Bearings are referred to the True Compass in degrees clockwise from 000° to 359°; those related to lights are from seaward. Heights and elevations of lights are above Mean High Water Springs, (applicable to Singaporean Charts).

All positions are in WGS 84.

SECTION I
INDEX OF CHARTS AND PUBLICATIONS AFFECTED

NOTICES	DESCRIPTION	PAGE	NOTICES	DESCRIPTION	PAGE
*19	Publication of New Edition Chart	30			
*20	Height Restricted Anchorages in Port Height Restricted	32			
*21	Updating of Publication "Singapore Port Information - Edition 2004"	33			
*22	Construction of the Marina Barrage Across Marina Channel	33			

**SECTION II
SINGAPORE NOTICES*****(NM 19/2005) NEW EDITION CHART PUBLISHED**

- Title** : CHARTS FOR SMALL CRAFT – Singapore Strait and Adjacent Waterways – 2005 Edition
- Content** : The publication contains 19 Small Craft Charts and related nautical information bound into an atlas measuring 60cm x 40cm. It includes information on pleasure craft facilities and sea sport activities such as sailing and power boating. The pages are laminated to prevent damage from seawater.
- The symbols, abbreviations and terms depicted on these charts are consistent with the Chart Standards and Specifications adopted by the International Hydrographic Organization (IHO).
- This publication includes information on pleasure craft facilities and sea sport activities such as sailing and power boating.
- Price (Excluding GST)** : S\$91.00
- Available from** : Motion Smith
78 Shenton Way #01-03
Singapore 079120
- Tel: 62205098 (After office hours: Pager No. 93044156, 93044159)
Fax: 62254902
E-mail: sales@motsmith.com
Internet Web Site at: <http://www.motsmith.com>
- Remarks** : CHARTS FOR SMALL CRAFT – Singapore Strait and Adjacent Waterways – 2003 Edition is superseded.

(Previous NM No. 1/6P/2005 is cancelled)

**SECTION II
TEMPORARY AND PRELIMINARY NOTICES**

Nil

SECTION III MARINE INFORMATION

***(NM 20/2005) HEIGHT RESTRICTED ANCHORAGES IN PORT**
(Previous NM No. 1/9/05 is superseded.)

1 In the exercise of his powers conferred by Section 43 of the Maritime and Port Authority of Singapore Act (Cap. 170A), the Port Master hereby declares the following areas as Height Restricted Areas and directs that the conditions set out hereunder shall be complied with:

(a) 49-METRE HEIGHT RESTRICTED AREAS

No vessel whose height¹ **exceeds 49 metres** shall enter, transit or anchor in the 49-metre Height Restricted Area which is bounded by a line joining the following geographical positions:

Positions in WGS 84

	Latitude	Longitude
(1)	01°18.296'N	103°56.514'E
(2)	01°18.296'N	103°56.708'E
(3)	01°17.496'N	103°58.979'E
(4)	01°17.646'N	104°01.096'E
(5)	01°17.154'N	104°01.664'E
(6)	01°16.626'N	103°58.978'E
(7)	01°16.629'N	103°56.514'E

thence to the point of origin

Please note that the Eastern Special Purposes 'A' Anchorage, Eastern Petroleum 'B' Anchorage and the Eastern Special Purposes 'C' Anchorage lie within the 49-metre Height Restricted Areas.

(b) 15-METRE HEIGHT RESTRICTED AREAS

No vessel whose height **exceeds 15 metres** shall enter, transit or anchor in the 15-metre Height Restricted Area which is bounded by a line joining the following geographical positions:

Positions in WGS 84

	Latitude	Longitude
(8)	01°23.346'N	103°59.946'E
(9)	01°23.196'N	104°00.296'E
(10)	01°21.096'N	104°03.013'E
(11)	01°17.646'N	104°01.096'E
(12)	01°17.496'N	103°58.979'E
(13)	01°18.429'N	103°56.330'E

thence in the eastward direction along the coastline to the point of origin.

Please note that the Eastern Special Purposes Anchorage 'B' and the Eastern Special Purposes Anchorages 'D' lie within the 15-metre Height Restricted Area.

2 Masters, owners, agents and persons-in-charge of vessels anchored in the above Height Restricted Areas are to ensure that the height of the vessel shall not be modified to exceed the permissible heights during her stay at the anchorages.

3 Masters, owners, agents and persons-in-charge of vessels are also reminded to comply with the height restriction in Keppel Harbour and the VHF radio reporting procedures for vessels manoeuvring in the East Johor Strait. The prohibitions and restrictions in the height restricted area of Keppel Harbour is stipulated in Regulation 49 of the Maritime and Port Authority of Singapore (Port) Regulations. Details of the

¹ Refers to the height declared by the vessel, measured vertically from the water-line to the highest point of the vessel including its cargo, structure or equipment on board. If there are extendible structures on board, the highest point shall be the maximum height attainable by these structures when fully extended, if such extended height exceeds the height of its cargo or fixed structures or equipment. This height must be verifiable with the appropriate plans or documents carried on board the vessel.

SECTION III MARINE INFORMATION

VHF radio reporting procedures for vessels manoeuvring within the Traffic Information Area (TIA) in the East Johor Strait is contained in Port Marine Circular (PMC) No 17 of 2001.

Source: Port Marine Circular No. 4 of 2005, Dated: 18 Feb 2005.

***(NM 21/2005) UPDATING OF PUBLICATION "SINGAPORE PORT INFORMATION EDITION 2004"**

To replace page 61:

HEIGHT RESTRICTED ANCHORAGES IN PORT

1 In the exercise of his powers conferred by Section 43 of the Maritime and Port Authority of Singapore Act (Cap. 170A), the Port Master hereby declares the following areas as Height Restricted Areas and directs that the conditions set out hereunder shall be complied with:

(b) 49-METRE HEIGHT RESTRICTED AREAS

No vessel whose height¹ **exceeds 49 metres** shall enter, transit or anchor in the 49-metre Height Restricted Area which is bounded by a line joining the following geographical positions:

Positions in WGS 84

	Latitude	Longitude
(1)	01°18.296'N	103°56.514'E
(2)	01°18.296'N	103°56.708'E
(3)	01°17.496'N	103°58.979'E
(4)	01°17.646'N	104°01.096'E
(5)	01°17.154'N	104°01.664'E
(6)	01°16.626'N	103°58.978'E
(7)	01°16.629'N	103°56.514'E

thence to the point of origin

Please note that the Eastern Special Purposes 'A' Anchorage, Eastern Petroleum 'B' Anchorage and the Eastern Special Purposes 'C' Anchorage lie within the 49-metre Height Restricted Areas.

(b) 15-METRE HEIGHT RESTRICTED AREAS

No vessel whose height **exceeds 15 metres** shall enter, transit or anchor in the 15-metre Height Restricted Area which is bounded by a line joining the following geographical positions:

Positions in WGS 84

	Latitude	Longitude
(8)	01°23.346'N	103°59.946'E
(9)	01°23.196'N	104°00.296'E
(10)	01°21.096'N	104°03.013'E
(11)	01°17.646'N	104°01.096'E
(12)	01°17.496'N	103°58.979'E
(13)	01°18.429'N	103°56.330'E

thence in the eastward direction along the coastline to the point of origin.

¹ Refers to the height declared by the vessel, measured vertically from the water-line to the highest point of the vessel including its cargo, structure or equipment on board. If there are extendible structures on board, the highest point shall be the maximum height attainable by these structures when fully extended, if such extended height exceeds the height of its cargo or fixed structures or equipment. This height must be verifiable with the appropriate plans or documents carried on board the vessel.

SECTION III MARINE INFORMATION

Please note that the Eastern Special Purposes Anchorage 'B' and the Eastern Special Purposes Anchorages 'D' lie within the 15-metre Height Restricted Area.

2 Masters, owners, agents and persons-in-charge of vessels anchored in the above Height Restricted Areas are to ensure that the height of the vessel shall not be modified to exceed the permissible heights during her stay at the anchorages.

3 Masters, owners, agents and persons-in-charge of vessels are also reminded to comply with the height restriction in Keppel Harbour and the VHF radio reporting procedures for vessels manoeuvring in the East Johor Strait. The prohibitions and restrictions in the height restricted area of Keppel Harbour is stipulated in Regulation 49 of the Maritime and Port Authority of Singapore (Port) Regulations. Details of the VHF radio reporting procedures for vessels manoeuvring within the Traffic Information Area (TIA) in the East Johor Strait is contained in Port Marine Circular (PMC) No 17 of 2001.

Source: Port Marine Circular No. 4 of 2005, Dated: 18 Feb 2005.

***(NM 22/2005) CONSTRUCTION OF THE MARINA BARRAGE ACROSS MARINA CHANNEL**

Applicable to : Mariners operating in the Marina Channel.

Date : With effect from 14 Feb 05 to 14 Aug 05.

Location : Marina Channel, within 2 working areas bounded by the following coordinates
(Please see plan attached)

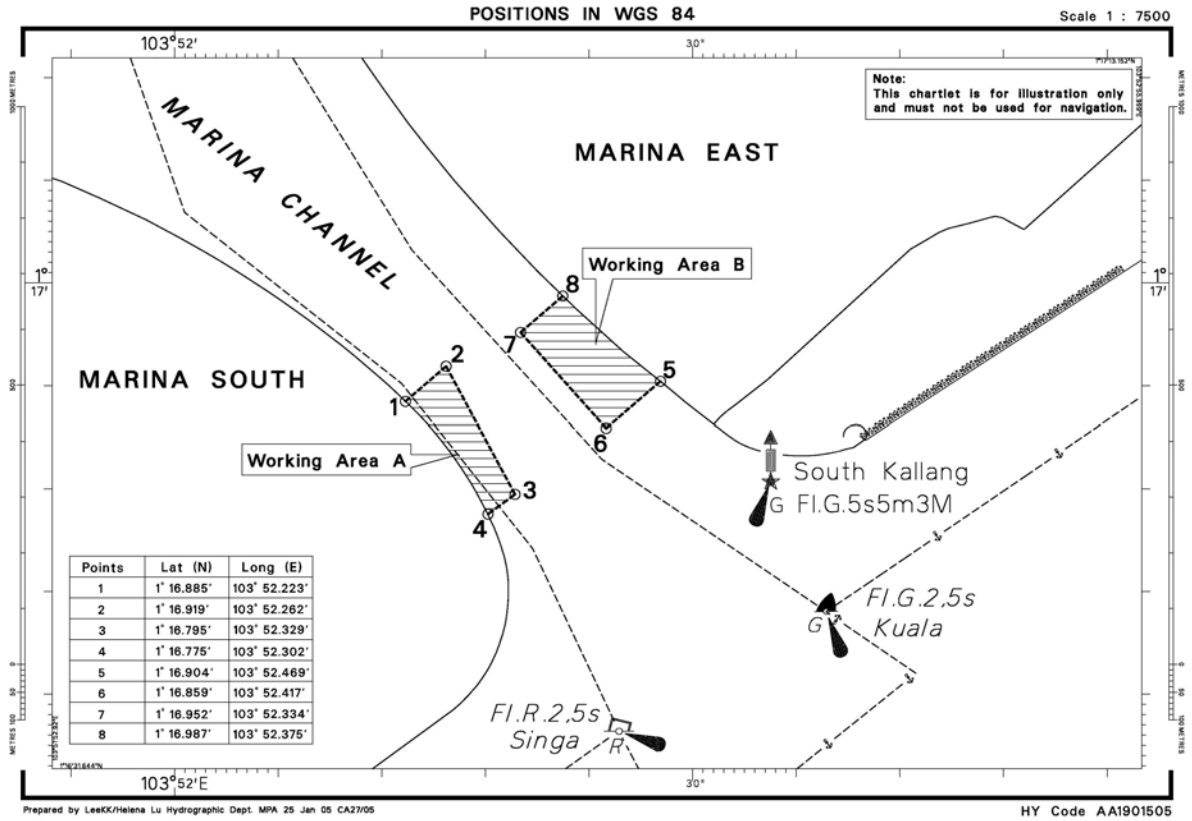
Area A		WGS 84 Datum	
Point	Latitude (N)	Longitude (E)	
1	01°16.885'	103°52.223'	
2	01°16.919'	103°52.262'	
3	01°16.795'	103°52.329'	
4	01°16.775'	103°52.302'	
Area B		WGS 84 Datum	
Point	Latitude (N)	Longitude (E)	
5	01°16.904'	103°52.469'	
6	01°16.859'	103°52.417'	
7	01°16.952'	103°52.334'	
8	01°16.987'	103°52.375'	

Working Hours : 0700 hours to 1900 hours daily, including Sundays and Public Holidays.

Source : Port Marine Notice No. 19 of 2005, dated 4 Feb 05

Charts affected : SP1, GSP1 and 4041

SECTION III MARINE INFORMATION



SECTION IV
REPRINT OF RADIO NAVIGATIONAL WARNINGS

Nil

**SECTION V
REPRINT OF ADMIRALTY NOTICES TO MARINERS
FOR DUAL BADGED CHART**

Nil

HYDROGRAPHIC NOTE - Instructions

1. Mariners are requested to notify the Chief Hydrographer, Maritime and Port Authority of Singapore, when new or suspected dangers to navigation are discovered, changes are observed in aids to navigation or where corrections to nautical publications may be necessary. Reports which cannot be confirmed or are lacking in certain details should not be withheld.
2. Any ambiguities of time, positioning and depths inaccuracies should be stressed and any firm expectation of being able to check the information on a following voyage should be mentioned.
3. Mariners using satellite position fixing systems, eg. GPS, should provide details of equipment and datum used (where applicable). Where bearings (true or magnetic) are taken visually or by radar to fix a position, it should include more than two objects in order to provide a check on its accuracy. A position may also be defined by bearing and distance from a conspicuous object eg. beacon, lighthouse etc.
4. The note should include a tracing or a digital image of the chart used and the details should be marked in red.
5. Echo sounders frequently register greater depths than the advertised maximum for the set, eg. with a set whose maximum is 500 metres, a trace appearing at 50 metres may in fact be 550 metres or even 1050 metres. Erroneous deep soundings caused by 2nd transmission error can usually be recognised by the following:-
 - (a) the tracing being weaker than normal for the depth registered,
 - (b) the trace appearing to pass through the transmission line,
 - (c) the feathery nature of the trace.
6. Reports may also be made to Singapore Port Operations on Hague Plan VHF Channels 12 or 20.
7. An acknowledgement of receipt will be sent. When a Notice to Mariners is issued, the sender's vessel or name is quoted as authority unless the same information is also received in foreign Notices to Mariners.

HYDROGRAPHIC NOTE

To:

The Chief Hydrographer
Hydrographic Department
Maritime and Port Authority of Singapore
460 Alexandra Road #20-00 PSA Building
Singapore 119963

Email address: hydrographic@mpa.gov.sg

Date:

Name of vessel / address of sender:

.....
.....

Contact details:

Tel/Fax/Email address:

General locality:

Subject:

Approx.Position: Lat..... Long.....

Charts used:

Method of Position Fixing:.....

Type of Echo Sounder:

Transducer Frequency:

(if applicable)

Details: -

.....
.....
.....
.....

Attachments:

Signature of

Observer/Reporter: Ship' s stamp