



SINGAPOREAN NOTICES TO MARINERS

	CONTENT	Page
I	Index of Charts & Publications	87
II	New Publications	90
	Notices to Mariners and Chart Corrections	91
	Temporary and Preliminary Notices	92
III	Navigational Information	93
	Amendments to Publications	94
IV	Reprint of Radio Navigational Warnings	96
V	Reprint of Admiralty Notices to Mariners for Dual Badged Charts	97

The monthly Notices to Mariners contain corrective information affecting charts published by the Hydrographic Department, Maritime and Port Authority of Singapore. The information contained in these Notices should be updated on the charts affected. Notices under Section II apply only to the particular Singaporean Chart(s) indicated.

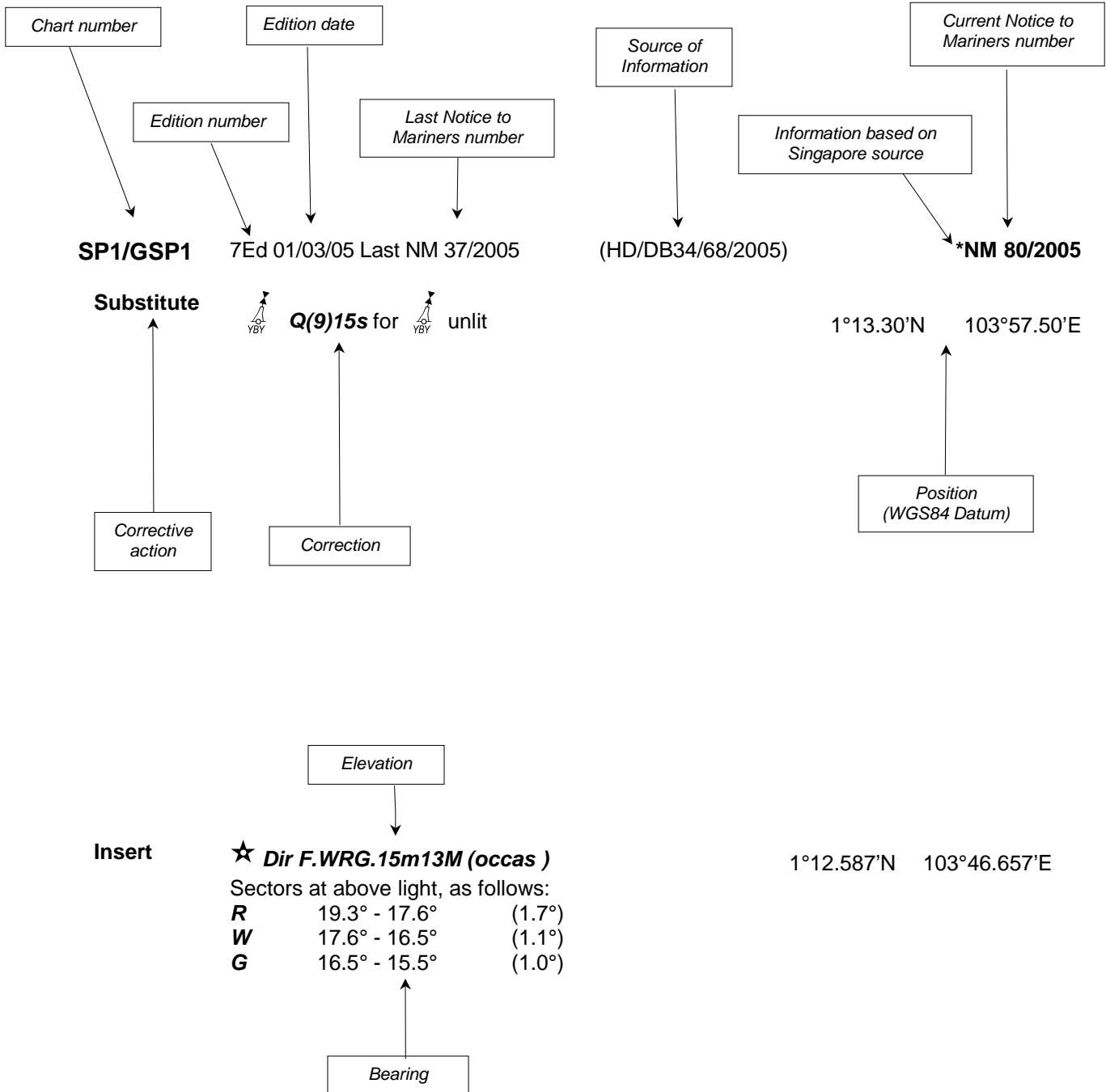
Mariners are requested to notify the Chief Hydrographer, Maritime and Port Authority of Singapore, immediately on the discovery of new dangers or suspected dangers to navigation and of changes or defects in aids to navigation. See Hydrographic Note on back page.

The monthly Singaporean Notices to Mariners can be accessed directly from the MPA website:
<http://www.mpa.gov.sg/infocentre/publications/noticesmari.htm>
 This service is offered free of charge.

Hydrographic Department
 Maritime and Port Authority of Singapore
 460 Alexandra Road PSA Building #20-00
 Singapore 119963
 Tel : (65) 6375 1227
 Fax : (65) 6278 7646

EXPLANATION OF FORMAT

The elements of a typical chart correction are explained below.



Notes:

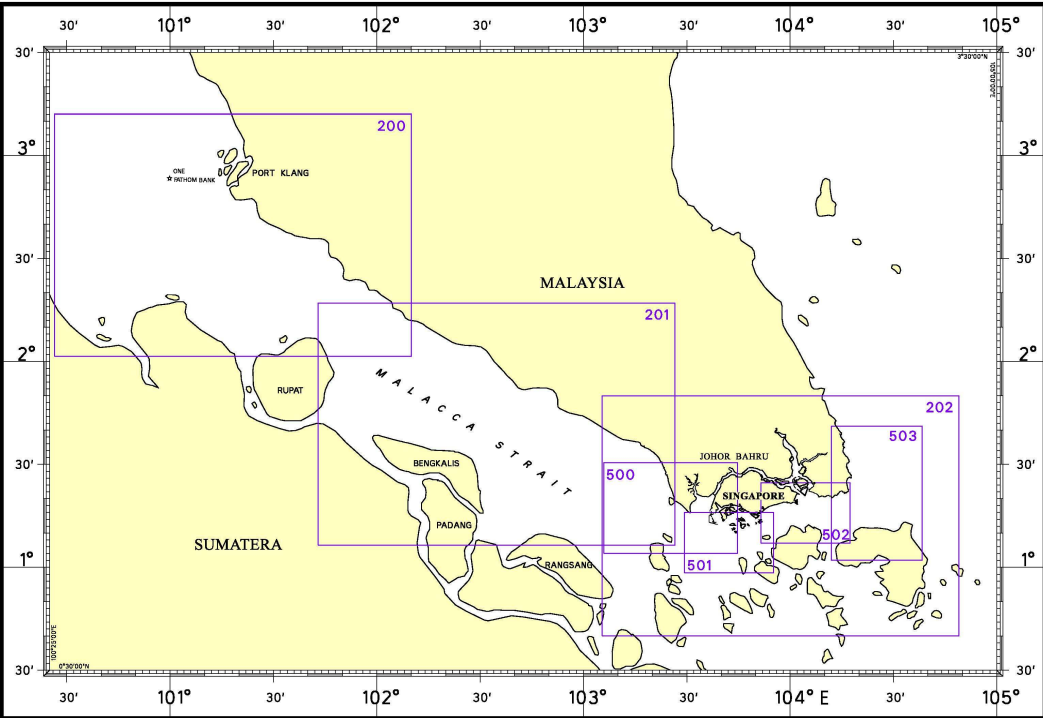
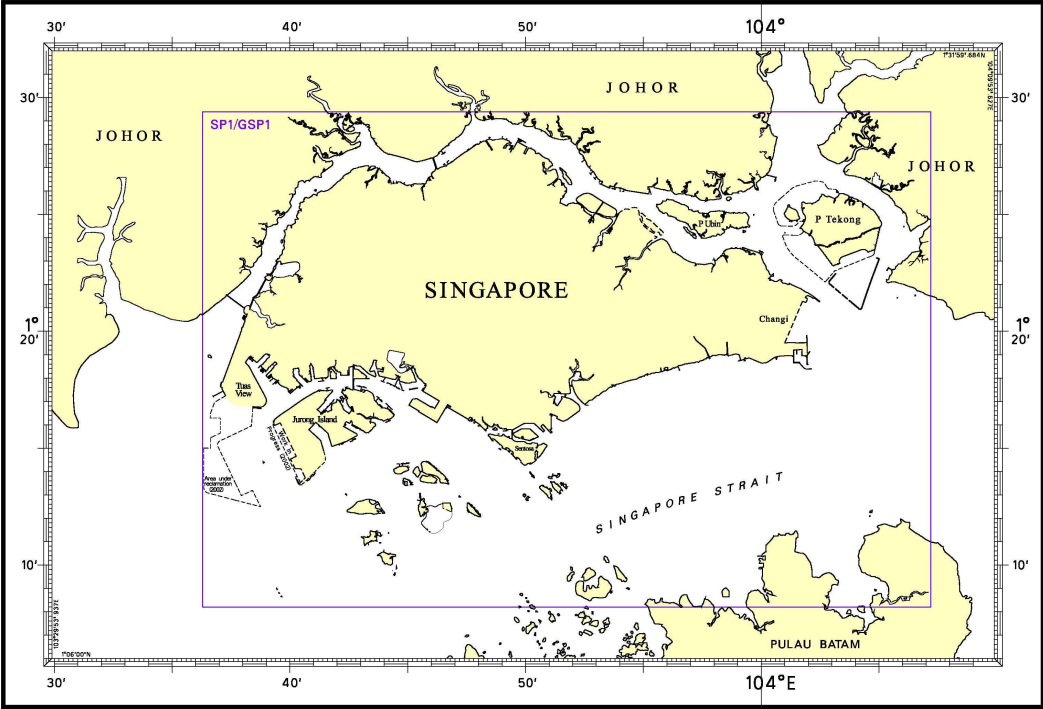
- a) Notice to Mariners number followed by:
 - T** indicates a Temporary Notice (eg. *NM 80T/2005).
 - P** indicates a Preliminary Notice (eg. *NM 80P/2005).
- b) Bearings are referred to True Compass in degrees clockwise from 000° to 359°. Bearings related to lights are from seaward.
- c) Heights and elevations are above Mean High Water Springs.

I

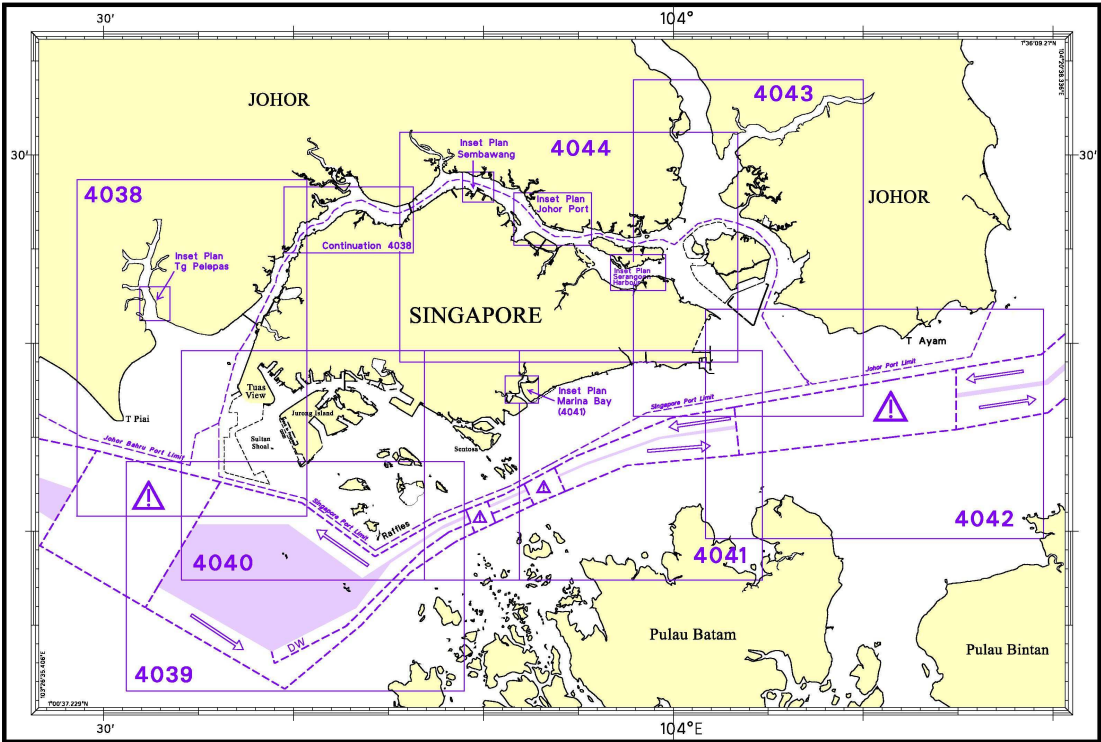
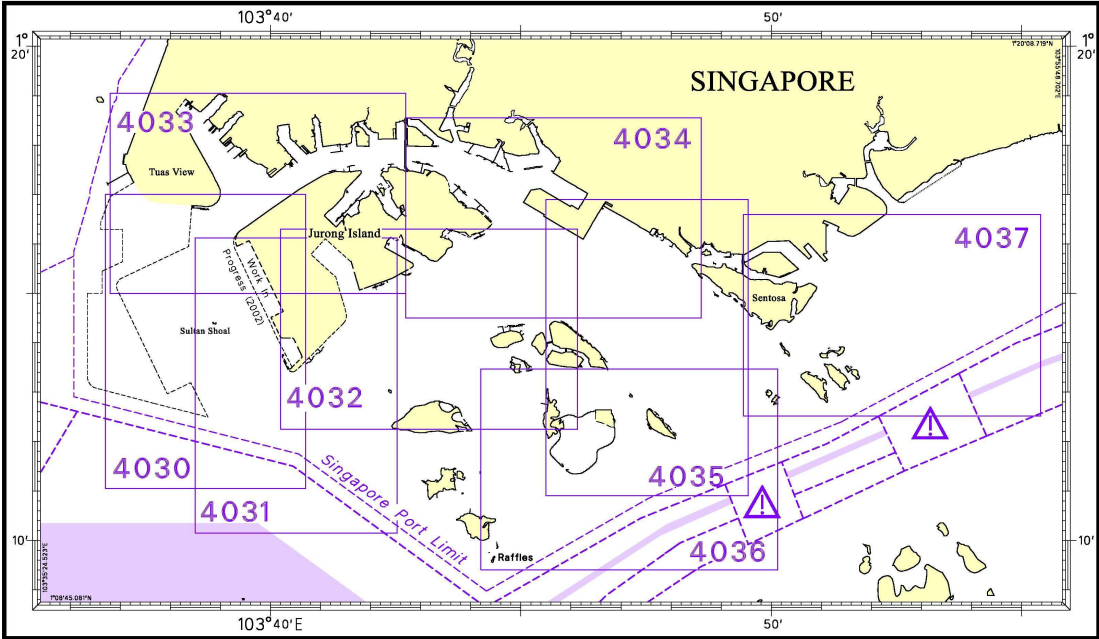
INDEX OF CHARTS AND PUBLICATIONS

NOTICES	DESCRIPTION	PAGE	NOTICES	DESCRIPTION	PAGE
	INDEX OF SINGAPOREAN CHARTS	88			
	INDEX OF DUAL BADGED CHARTS	89			
	New Edition DUAL BADGED CHARTS	90			
39	200	91			
40	201	91			
*41	Port Marine Notices	93			
*42	Updating of Publication "SINGAPORE PORT INFORMATION 2006/2007 EDITION"	94			

I
INDEX OF CHARTS AND PUBLICATIONS
INDEX OF SINGAPOREAN CHARTS



I
INDEX OF CHARTS AND PUBLICATIONS
INDEX OF DUAL BADGED CHARTS



II NEW PUBLICATIONS

NEW EDITION DUAL BADGED CHART PUBLISHED ON 24 May 2007

Chart No : 4037
Title : Port of Singapore – Keppel Harbour, Tanjong Pagar Terminal and Approaches
Coverage Lat 1° 12.52' N 1° 16.59' N
 Long 103° 49.40' E 103° 55.34' E
Scale : 1 : 10 000
Date Published : 24 May 2007
Size of chart : 1100.8 x 750.1mm
Remarks : This new edition includes new surveys covering East Keppel Fairway, Eastern Fairway, new submarine pipelines and cables from Sentosa to Pulau Seringat and the One° 15 Marina Club. The existing chart of the same number published on 13 April 2006 is superseded.

NEW EDITION DUAL BADGED CHART PUBLISHED ON 24 May 2007

Chart No : 4041
Title : Singapore and Indonesia
 Pulau Sebarok to Changi
Coverage Lat 1° 07.40' N 1° 19.60' N
 Long 103° 46.90' E 104° 04.70' E
Scale : 1 : 30 000
Date Published : 24 May 2007
Size of chart : 1100.6 x 749.5mm
Remarks : This new edition includes new surveys covering East Keppel Fairway, West Keppel Fairway, Eastern Fairway and anchorages, new submarine pipelines and cables from Sentosa to Pulau Seringat and the One° 15 Marina Club. Inset Plan covering Marina Bay has been removed. The existing chart of the same number published on 1 December 2005 is superseded.

NEW EDITION DUAL BADGED CHART PUBLISHED ON 29 MARCH 2007

Chart No : 4039
Title : Western Approaches to Main Strait
Coverage Lat 1° 01.50' N 1° 13.70' N
 Long 103° 31.20' E 103° 49.00' E
Scale : 1 : 30 000
Date Published : 29 March 2007
Size of chart : 1100.7 x 749.5mm
Remarks : The new edition includes new surveys covering Approaches to Temasek and Sinki Fairways, Raffles Shoal and new jetties of Pulau Sebarok. The existing chart of the same number published on 1 December 2005 is superseded.

II
NOTICES TO MARINERS AND CHART CORRECTIONS

200 2Ed 30/11/05 Last NM 23/2007 (Admiralty Notices 17/1944/2007) **NM 39/2007**

Delete



2°40.75'N

101°06.53'E

201 2Ed 15/09/03 Last NM 127/2006 (Admiralty Notices 15/1717/2007) **NM 40/2007**

Insert



1°32.77'N

101°54.90'E

II
TEMPORARY AND PRELIMINARY NOTICES

Nil

III
NAVIGATIONAL INFORMATION

***(NM 41/2007) PORT MARINE NOTICES**

These notices can be accessed directly from MPA website:
http://www.mpa.gov.sg/circulars_and_notices/portmarine_notices/pm_notices.htm

PMN No.	Subject
37/2007	Construction of: (a) Causeway across Pulau Punggol Barat and Pulau Punggol Timur; and (b) Bridge across Pulau Punggol Barat and Mainland (Seletar) (Revision of PMN No. 120/2006)
38/2007	Dredging and Marine construction works at entrance to Sungei Serangoon (Revision of PMN No. 178/2006)
46/2007	Repair of Barge Ramp at Pulau Busing (Revision of PMN No. 132/2006)
50/2007	Construction works at Siloso Beach, Sentosa.
52/2007	Construction of automotive container berths (P12 to P14) and storage yards at Pasir Panjang.
53/2007	Construction of marine jetty and foreshore structures at Jurong Island. (Revision of PMN No. 142/2006)
54/2007	a) Reclamation of Jurong Island Phase 4; and b) Marine soil investigation at Banyan Basin (Revision of PMN No. 144/2006)

III AMENDMENTS TO PUBLICATIONS

***(NM 42/2007) UPDATING OF PUBLICATION "SINGAPORE PORT INFORMATION 2006/2007 EDITION"**

1 Page 149 - Item 9

JURONG TERMINAL (JURONG PORT PTE LTD) (1°18.3'N, 103°43.1'E)

Amend the following:

Berth	Depth Alongside (Year Surveyed)		Controlling Depth In Approaches
	Delete	<i>Insert</i>	<i>Insert</i>
J4	13.0m (1997)	13.0m (2007)	13.2m

Source: HD/HY Code H00101407

2 Page 155 - Item 28

PULAU BUSING (TANKSTORE) (1°14.4'N, 103°44.7'E)

Amend the following:

Berth	Length of Berth	
	Delete	<i>Insert</i>
Berth 5	360m	281.1m

Insert the following:

Berth	Length of Berth	Max LOA	Depth Alongside (Year Surveyed)	Controlling Depth In Approaches
Berth 7	280m	280m	15.3 (2007)	15.3m from west 15.3m from east
Berth 8	308m	280m	17.1 (2007)	16.1m from west 15.3m from east

Source: HD/HY Code D00101407

3 Page 152 - Item 15

JURONG ISLAND (EXXONMOBIL ASIA PACIFIC PTE LTD) (1°16.8'N, 103°41.5'E)

Amend the following:

Berth	Depth Alongside (Year Surveyed)		Controlling Depth In Approaches	
	Delete	<i>Insert</i>	Delete	<i>Insert</i>
Solid Handling Pier	8.1m (2005)	10.0m (2007)	-	8.1m

Source: HD/HY Code E00101607

III AMENDMENTS TO PUBLICATIONS

4 Page 153 - Item 20

JURONG ISLAND (SINGAPORE REFINING CO PTE LTD) (1°17.6'N, 103°43.0'E)

Amend the following:

Berth	Depth Alongside (Year Surveyed)		Controlling Depth In Approaches	
	Delete	<i>Insert</i>	Delete	<i>Insert</i>
No. 1	15.7m (1999)	15.7m (2007)	13.9m	13.9m
No.3	10.7m (2000)	10.7m (2007)	-	12.1m
No. 5	10.7m (2003)	10.6m (2007)	7.3m	8.3m
No. 6	11.4m (1992)	11.4m (2007)	-	12.1m

* Berth 4 has been demolished

Source: HD/HY Codes H00101607 & H00101707

5 Page 125 -

PULAU SEBAROK (Contd/)

Amend the following:

	Name Of Beacon/Buoy	Position Lat. N Long. E Deg Min
Delete	VOTTS Front Beacon Lts in Line 40°05' (P Sebarok jetty 5)	01 12.007 103 47.818
<i>Insert</i>	VOTTS Front Beacon (P Sebarok jetty)	01 12.007 103 47.592

Source: HD/HE025/008/2007

IV
REPRINT OF RADIO NAVIGATIONAL WARNINGS

Nil

V
REPRINT OF ADMIRALTY NOTICES TO MARINERS
FOR DUAL BADGED CHARTS

1846 * SINGAPORE — Pulau Seringat — North Coast — Wreck. Buoy.

Source: Maritime and Port Authority of Singapore

Chart 4037 [previous update 872/07] WGS84 DATUM

Delete



(a) 1° 13' .948N. , 103° 51' .146E.



Fl(2)10s KMJa, close NW of:

(a) above

1847 * SINGAPORE — Changi East South-westwards and Marina Bay — Wreck. Buoy. Landmark.

Source: Maritime and Port Authority of Singapore

Chart 4041 [previous update 1274/07] WGS84 DATUM

Delete



1° 17' .34N. , 103° 51' .87E.



(a) 1° 16' .98N. , 103° 57' .84E.



Fl(2)10s, close SE of:

(a) above

Chart 4041(plan A, Marina Bay) [previous update 1274/07] WGS84 DATUM

Delete



1° 17' .341N. , 103° 51' .872E.

1848 * SINGAPORE — Pulau Punggol Timor North-eastwards — Buoyage.

Source: Maritime and Port Authority of Singapore

Chart 4044 [previous update New Edition 22/02/2007] WGS84 DATUM

Insert



Fl.Y.6s Shimizu 1

1° 25' .66N. , 103° 53' .92E.



Fl.Y.6s Shimizu 2

1° 25' .22N. , 103° 53' .90E.

Chart 4044 (plan B, Pelabuhan Johor) [previous update New Edition 22/02/2007] WGS84 DATUM

Insert



Fl.Y.6s Shimizu 1

1° 25' .662N. , 103° 53' .915E.



Fl.Y.6s Shimizu 2

1° 25' .224N. , 103° 53' .897E.

V
**REPRINT OF ADMIRALTY NOTICES TO MARINERS
 FOR DUAL BADGED CHARTS**

1849 * SINGAPORE — Kuala Johor — Tanjong Changi to T Ladang — Submarine power cable. Legend.

Source: Maritime and Port Authority of Singapore

Chart 4043 [previous update 969/07] WGS84 DATUM

Insert	submarine power cable,  \sphericalangle  , joining:	1° 23' .23N. , 104° 00' .01E. (shore) 1° 23' .60N. , 104° 00' .49E. 1° 23' .90N. , 104° 00' .55E. (a) 1° 24' .34N. , 104° 00' .96E. (b) 1° 24' .55N. , 104° 01' .75E. (shore) (a)-(b) above
	legend, <i>Buried</i> , along:	

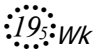
1850 * SINGAPORE — Raffles Shoal — Depths. Wreck.

Source: Maritime and Port Authority of Singapore

Chart 4031 [previous update 798/07] WGS84 DATUM

Insert	depth 16_i depth 16	(a) 1° 10' .605N. , 103° 41' .615E. (b) 1° 10' .487N. , 103° 41' .739E.
Delete	depth 14_i enclosed by 15m contour, close SE of: depth 14_b enclosed by 15m contour depth 14_7 enclosed by 15m contour depth 14_3 enclosed by 15m contour depth 14_9 enclosed by 15m contour, close NW of:	(a) above 1° 10' .596N. , 103° 41' .364E. 1° 10' .558N. , 103° 41' .665E. 1° 10' .536N. , 103° 41' .716E. (b) above

Chart 4040 [previous update 1277/07] WGS84 DATUM

Insert	depth 15_7	1° 10' .44N. , 103° 41' .51E.
Delete	depth 14_i and associated 15m contour depth 15_i depth 14_b enclosed by 15m contour 	1° 10' .60N. , 103° 41' .62E. 1° 10' .50N. , 103° 41' .58E. 1° 10' .60N. , 103° 41' .36E. 1° 09' .64N. , 103° 42' .71E.

V
REPRINT OF ADMIRALTY NOTICES TO MARINERS
FOR DUAL BADGED CHARTS

1851 * SINGAPORE — Changi East Southwards — Wreck.

Source: Maritime and Port Authority of Singapore

Chart 4041 [previous update 1847/07] WGS84 DATUM

Delete



1° 17' .08N. , 104° 01' .21E.

Chart 4043 [previous update 1849/07] WGS84 DATUM

Delete



1° 17' .08N. , 104° 01' .22E.

1852 * SINGAPORE — West Jurong Channel — Jurong Island — T Tok Northwards — Depths. Dredged depth.

Source: Maritime and Port Authority of Singapore

Chart 4033 [previous update 1275/07] WGS84 DATUM

Insert

depth 11₉

(a) 1° 17' .635N. , 103° 42' .462E.

Amend dredged depth to, 12.4m (2006), centred on:

1° 17' .631N. , 103° 42' .547E.

Delete depth 12₂, adjacent to:

(a) above

1853 * SINGAPORE — Sentosa — Buk Selegu North-eastwards — Mooring buoys.

Source: Maritime and Port Authority of Singapore

Chart 4035 [previous update 1274/07] WGS84 DATUM

Delete



1° 15' .601N. , 103° 49' .142E.

1° 15' .585N. , 103° 49' .156E.

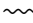

1° 15' .563N. , 103° 49' .194E.

1907 * SINGAPORE STRAIT — Johor — Tanjung Setapa South — westwards — Submarine cable.


Source: Maritime and Port Authority of Singapore

Chart 4042 [previous update 2184/07] WGS84 DATUM

Insert

submarine cable, , joining:1° 17' .07N. , 104° 03' .63E.()

1° 17' .35N. , 104° 07' .25E.

1° 17' .55N. , 104° 07' .78E.()

Updated to Admiralty Notices to Mariners Edition No. 17 of 2007 dated 19 April 2007

SINGAPORE ELECTRONIC NAVIGATIONAL CHARTS (ENC) DISTRIBUTORS
Please approach any of the appointed distributors to purchase the Singapore ENC.

CONTACT PERSON/ DESIGNATION	ADDRESS	TELEPHONE/FAX NO./EMAIL/WEBSITE
Mr Chong Chee Meng General Manager	DPM (Singapore) Pte Ltd 1 Maritime Square, #09-72 Harbour Front Centre, Singapore 099253	Tel. No.: +65 6270 4060 Fax No.: +65 6276 3858 Email: sales@dpmsingapore.com.sg Website: http://www.dpmsingapore.com.sg
Mr Hamzah Akhbar MDS Branch Manager	Kelvin Hughes (S) Pte Ltd 8 Pandan Avenue #02-00, Singapore 609384	Tel. No.: +65 6545 9880 ext.24 Fax No.: +65 6545 8892 Email: hamzah.akhbar@khsing.com Website: http://www.kelvinhughes.co.uk
Mr Philip Loh Sales Manager	Motion Smith 76 Shenton Way #01-01, Singapore 079119	Tel. No.: +65 6220 5098 Fax No.: +65 6225 4902 Email: sales@motsmith.com Website: http://www.motsmith.com
Mr Choy Kum Weng Director	Vector Services Pte Ltd 2 Maritime Square #04-12B SP I Building, Singapore 099255	Tel. No.: +65 6278 7212 Fax No.: +65 6278 7212 Email: kwchoy@pacific.net.sg
Mr Looi Keen Wai Regional Sales Manager	Transas Marine Pacific Pte Ltd 750C Chai Chee Road, Technopark@Chai Chee, #04-07 Singapore 469003	Tel. No.: +65 6443 3061 Fax No.: +65 6443 3025 Email: looi@transas.com.sg Website: http://www.transas.com.sg
Mr George Arts President	Marine Press of Canada 640 Rue St-Paul Ouest, Suite 300 Montreal (QC) Canada, H3C1L9	Tel. No.: (514) 866-8342 Fax No.: (514) 866-9050 Email : sales@marinepress.com Website: http://www.marinepress.com
Mr Thomas Wilde Superintendent	HanseNautic GmbH Bade & Hornig, Eckardt & Messtorff Herrengarten 31 D-20459 Hamburg, Germany	Tel. No.: +49 40 374 811-32 Fax No.: +49 40 366 400 Email: wilde@hansenautic.de Website : http://www.HanseNautic.com
Ms Verena Borsos Manager	SevenCs AG + Co. KG Ruhrstrasse 90, D-22761 Hamburg, Germany	Tel. No.: +49 40 853 58 6940 Fax No.: +49 40 853 58 6949 Email: sales@chartworld.com Website : http://www.sevencs.com
Mr Keiji Shimizu ENC Manager	Japan Hydrographic Association ENC Service Division 5-3-3 Tsukiji, Chuo-ku Tokyo 104-0045, Japan	Tel. No.: +81 3 3543 0752 Fax No.: +81 3 3543 0695 Email: enc-support@jha.jp Website: http://www.jha.jp.com
Mr Jester-Kim Foreign Business Department Manager	E_MLX Co. Ltd Ssangyong Research No.2 Lab Sinseong-Dong 100 Yusong-Gu, Daejeon 305-804, Korea (ROK)	Tel. No.: +82 42 865 1893 Fax No.: +82 42 865 1884 Email: Jester-kim@emlx.co.kr
Mr C G Kim Managing Director	Korean Ocean Development Co. Ltd 2ND Fl, Dongbang Bldg, 25-4, 4 Ga Jungang-Dong, Jung-Gu, Busan, South Korea	Tel. No.: +82 514 66 0760 Fax No.: +82 514 65 9345 Email: sales@chartkorea.com Website: http://www.chartkorea.com

SINGAPORE ELECTRONIC NAVIGATIONAL CHARTS (ENC) DISTRIBUTORS
Please approach any of the appointed distributors to purchase the Singapore ENC.

CONTACT PERSON/ DESIGNATION	ADDRESS	TELEPHONE/FAX NO./EMAIL/WEBSITE
Mr Kjell Nodland	C-Map Norway A/S P.O Box 212 , N-4371 Egersund, Norway	Tel No.: +47 514 64 700 Fax No: +47 514 64 701 Email: market@c-map.no Website : http://www.c-map.no
Ms Eva Hegland Sales, order and distributor support.	PRIMAR STAVANGER Lervigsveien 36, P.O Box 60, N-4001 Stavanger, Norway	Tel. No.: +47 51 93 9500 Fax No.: +47 51 93 9501 Email: sales@primar.org Website : http://www.primar-stavanger.org
Mr Roar Moe International Marketing Coordinator	Maritime Information System AS (MARIS) Danholmen 25, No.3115 Tonsberg, Norway	Tel. No.: +47 33 30 42 50 Fax No.: +47 33 30 42 51 Email: roar.moe@maris.no Website: http://www.maris.no
Mr Andy Criddle Regional Sales Manager	United Kingdom Hydrographic Office Admiralty Way, Taunton, Somerset TA1 2DN United Kingdom	Tel. No.: +44 (0)1823 337900 Fax No.: +44 (0)1823 284077 Emails: vargroup@ukho.gov.uk & andrew.criddle@ukho.gov.uk Website: http://www.ukho.gov.uk

CHART AGENTS FOR MARITIME AND PORT AUTHORITY OF SINGAPORE (MPA) PUBLICATIONS

Agent's name : MOTION SMITH
Address : 76 Shenton Way # 01-01
Singapore 079119
Telephone : (65) 6220 5098
: (After Office hours: Pager No. 9304 4156, 9304 4159)
Fax No. : (65) 6225 4902
E-mail : sales@motsmith.com
Website : <http://www.motsmith.com>

Agent's name : HONG YUNN SEA PROFESSIONAL CO., LTD
Address : 198 Ta Tong 1st Road, Kaohsiung 800,
Taiwan
Telephone : 886-7-2217367
Fax No. : 886-7-2818180
E-mail : kimchang@hongyunn.com.tw
Website : <http://www.hongyunn.com.tw>

HYDROGRAPHIC NOTE - Instructions

1. Mariners are requested to notify the Chief Hydrographer, Maritime and Port Authority of Singapore, when new or suspected dangers to navigation are discovered, changes are observed in aids to navigation or where corrections to nautical publications may be necessary. Reports, which cannot be confirmed or are lacking in certain details should not be withheld.
2. Any ambiguities of time, positioning and depth should be stressed and any firm expectation of being able to check the information provided on a following voyage should be mentioned.
3. Mariners using satellite position fixing systems, eg. GPS, should provide details of equipment and datum used (where applicable). Where bearings (true or magnetic) are taken visually or by radar to fix a position, it should include more than two objects in order to provide a check on its accuracy. A position may also be defined by bearing and distance from a conspicuous object eg. beacon, lighthouse etc.
4. The note should include a tracing or a digital image of the chart used and the details should be clearly marked.
5. Echo sounders frequently register greater depths than the advertised maximum depth for the equipment, eg. a trace appearing at 50 metres may be in fact be 550 metres or even 1050 metres for equipment whose maximum depth is 500 metres. Erroneous depths caused by 2nd transmission error can usually be recognised by the following:
 - (a) the tracing being weaker than normal for the depth registered,
 - (b) the trace appearing to pass through the transmission line,
 - (c) the feathery nature of the trace.
6. An acknowledgement of receipt will be sent. When a Notice to Mariners is issued, the sender's vessel or name is quoted as the source unless the same information is also received in foreign Notices to Mariners.
7. Reports of shoals, uncharted dangers and defects in aids to navigation may also be made to the appropriate Singapore Port Operations Control Station on VHF Channels 10, 12, 14, 68 or 73.

HYDROGRAPHIC NOTE

To:

Chief Hydrographer
Hydrographic Department
Maritime and Port Authority of Singapore
460 Alexandra Road PSA Building #20-00
Singapore 119963

Tel : (65) 6375 1227
Fax : (65) 6278 7646
Email : hydrographic@mpa.gov.sg

Sender's Contact Details :

Date :
Name of Vessel :
Address of Sender :
Tel : Fax :
Email :

Nature of Observation :

General Location :
Subject :
Position : Lat. Long.
Charts Used :
Date & Time of Observation :
Details :
.....
.....
Attachment :

Equipment Used :

Type of Position Fixing : GPS / DGPS Others :
Type of Echo Sounder :

Name and Signature :

Ship's/Company's stamp :