



## SINGAPOREAN NOTICES TO MARINERS

SECTION	CONTENT	Page
I	Index of Charts & Publications	80
II	New Publications	85
	Notices to Mariners and Chart Corrections	86
	Temporary and Preliminary Notices	87
III	Navigational Information	88
	Amendments to Publications	90
IV	Reprint of Radio Navigational Warnings	92
V	Reprint of Admiralty Notices to Mariners for Dual Badged Charts	93

The monthly Notices to Mariners contain corrective information affecting charts published by the Hydrographic Department, Maritime and Port Authority of Singapore. The information contained in these Notices should be updated on the charts affected. Notices under Section II apply only to the particular Singaporean Chart(s) indicated.

Mariners are requested to notify the Chief Hydrographer, Maritime and Port Authority of Singapore, immediately on the discovery of new dangers or suspected dangers to navigation and of changes or defects in aids to navigation. See Hydrographic Note on back page.

The monthly Singaporean Notices to Mariners can be accessed directly from the MPA website:  
[http://www.mpa.gov.sg/sites/port\\_and\\_shipping/circulars\\_and\\_notices/singapore\\_notices\\_to\\_mariners\(ntm\).page](http://www.mpa.gov.sg/sites/port_and_shipping/circulars_and_notices/singapore_notices_to_mariners(ntm).page)

This service is offered free of charge.

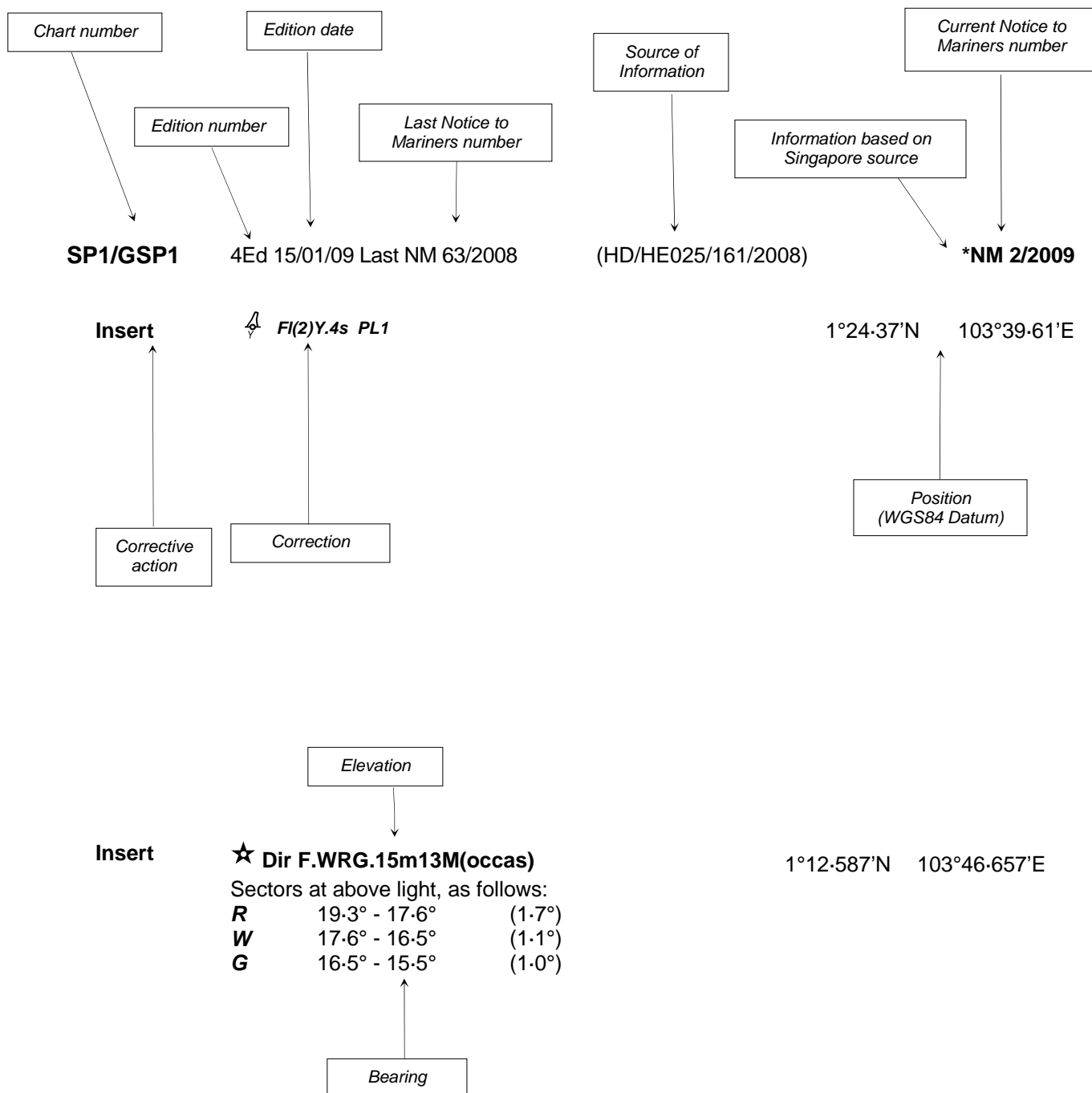
The Chief Hydrographer of  
Maritime and Port Authority of Singapore  
wishes all users of Singaporean and Dual Badged  
Charts

**A HAPPY VESAK DAY**

Hydrographic Department  
Maritime and Port Authority of Singapore  
460 Alexandra Road  
PSA Building #20-00  
Singapore 119963  
Tel: (65) 6375 1227  
Fax: (65) 6278 7646

## EXPLANATION OF FORMAT

The elements of a typical chart correction are explained below.



**Notes:**

- a) Notice to Mariners number followed by:
  - T** indicates a Temporary Notice (eg. **\*NM 1T/2009**).
  - P** indicates a Preliminary Notice (eg. **\*NM 1P/2009**).
- b) Bearings are referred to True Compass in degrees clockwise from 000° to 359°. Bearings related to lights are from seaward.
- c) Heights and elevations are above Mean High Water Springs.

I  
INDEX OF CHARTS AND PUBLICATIONS

DESCRIPTION	NOTICE NO.	PAGE NO.
Index of Singaporean Charts	-	82
Index of Dual Badged Charts	-	83
Index of Singapore Electronic Navigational Charts (ENC)	-	84
New Edition Dual Badged Charts	-	85
Singaporean Chart SP1/GSP1	*40, *41, *42, *43	86
Singaporean Chart 501	*44	86
Temporary and Preliminary Notices	45T, 46T	87
Port Marine Notices	*47	88
Singaporean Print on Demand (POD) Charts	*48	89
Updating of Publication "SINGAPORE PORT INFORMATION 2008/2009 EDITION"	*49	90
Reprint of Radio Navigational Warnings	-	92
Reprint of Admiralty Notices to Mariners for Dual Badged Charts	-	93
Singapore Electronic Navigational Charts (ENC) Distributors	-	97

\* Denotes information are based on Singapore source.

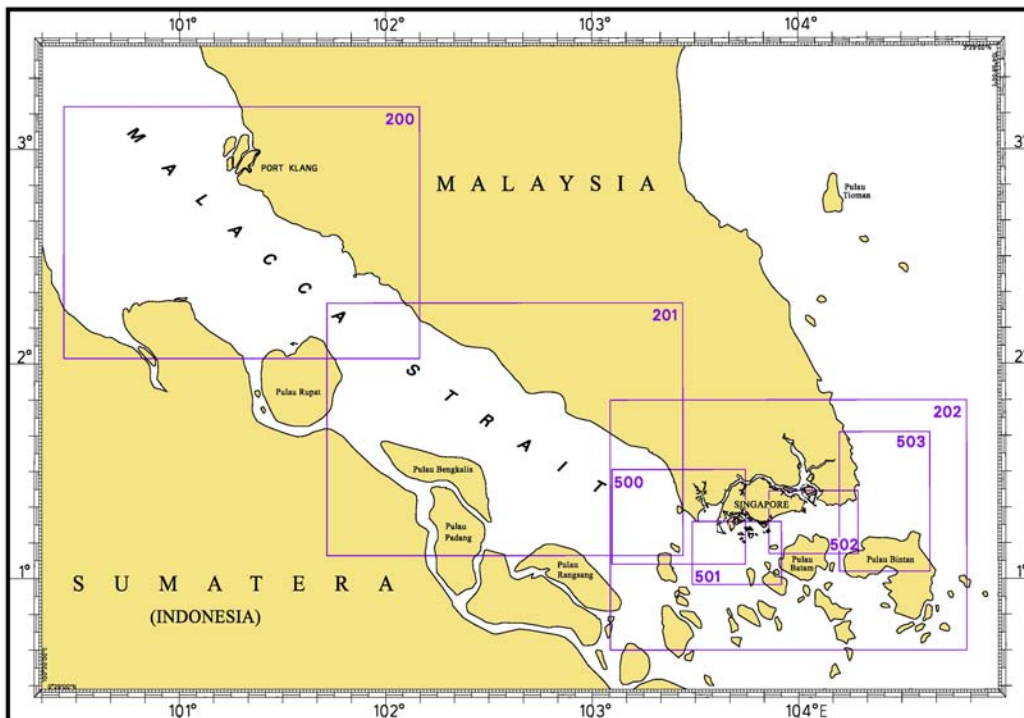
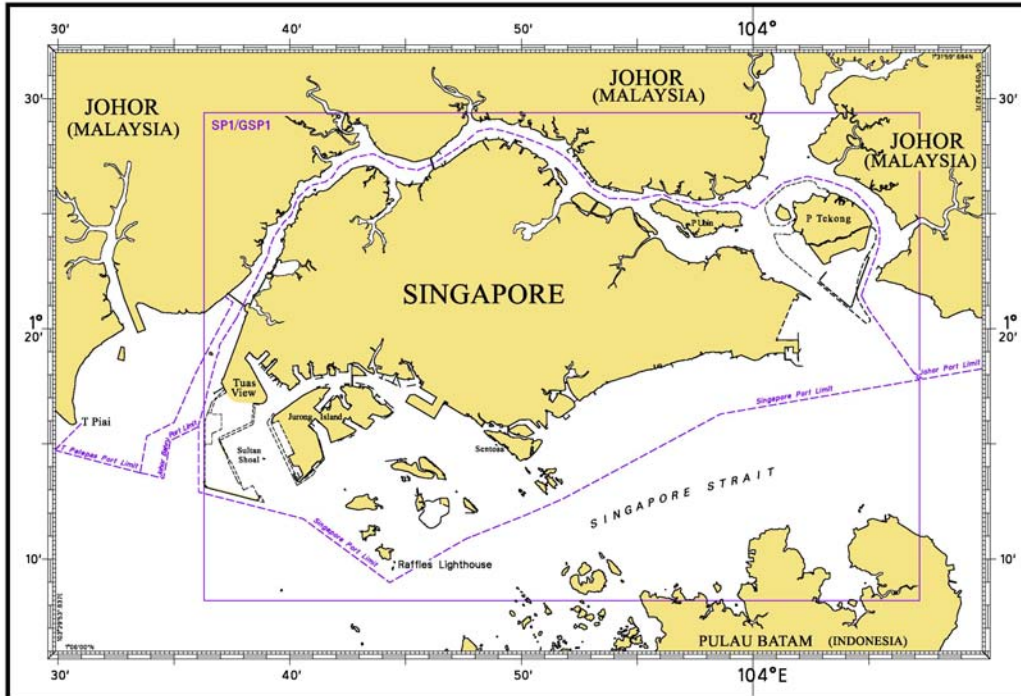
## INDEX OF CHARTS AND PUBLICATIONS

NOTICE NO.	DESCRIPTION	PAGE NO.	NOTICE NO.	DESCRIPTION	PAGE NO.
-	Index of Singaporean Charts	82			
-	Index of Dual Badged Charts	83			
-	Index of Singapore Electronic Navigational Charts (ENC)	84			
-	New Edition Dual Badged Charts	85			
*40	SP1/GSP1	86			
*41	SP1/GSP1	86			
*42	SP1/GSP1	86			
*43	SP1/GSP1	86			
*44	501	86			
45T, 46T	Temporary and Preliminary Notices	87			
*47	Port Marine Notices	88			
*48	Singaporean Print on Demand (POD) Charts	89			
*49	Updating of Publication "SINGAPORE PORT INFORMATION 2008/2009 EDITION"	90			
-	Reprint of Radio Navigational Warnings	92			
-	Reprint of Admiralty Notices to Mariners for Dual Badged Charts	93			
-	Singapore Electronic Navigational Charts (ENC) Distributors	97			

\* Denotes information are based on Singapore source.

# I INDEX OF CHARTS AND PUBLICATIONS

## INDEX OF SINGAPOREAN CHARTS



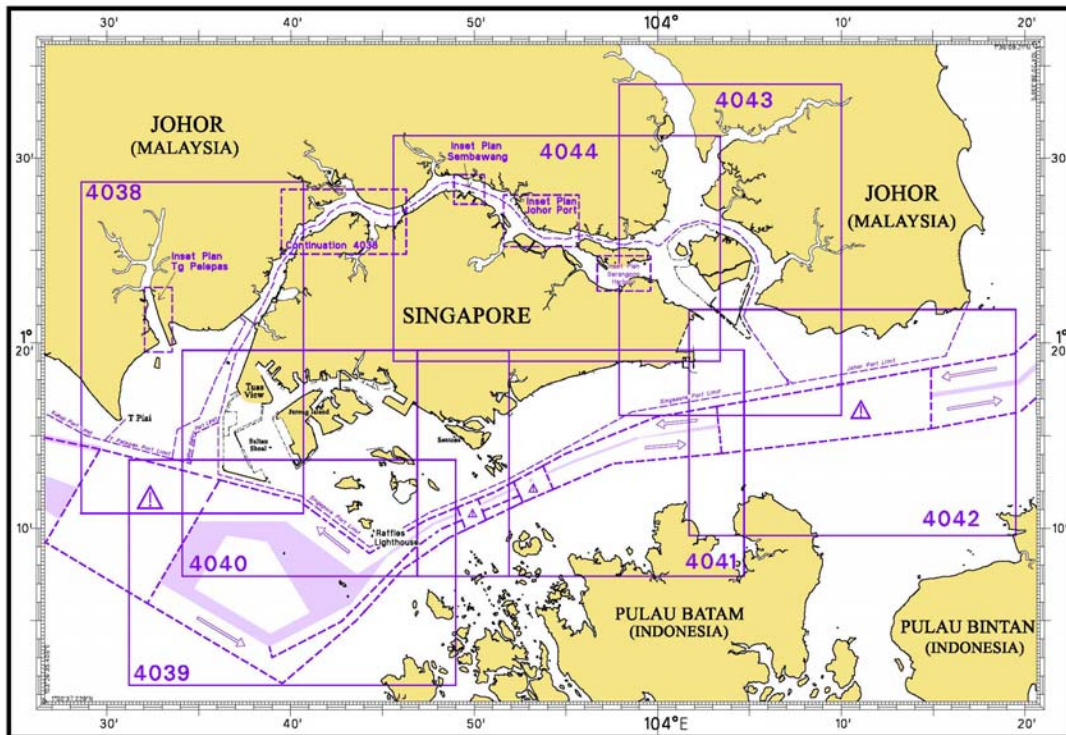
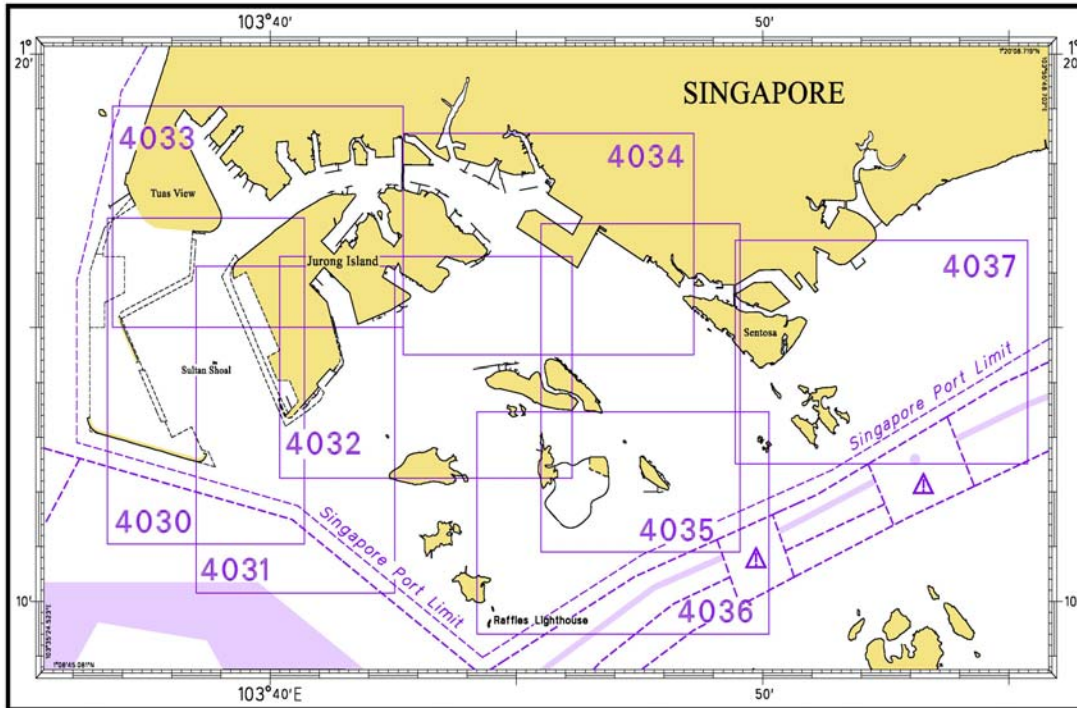
**Notes:**

Updated SINGAPOREAN Charts (excluding Charts SP1/GSP1) are available through our Print On Demand (POD) Chart Service. For more information, refer to Section III – Navigational Information and these charts can be purchased from our authorised Chart Agents:

DPM (Singapore) Pte Ltd, E.W. Liner Charts & Publications Pte Ltd and Motion Smith.

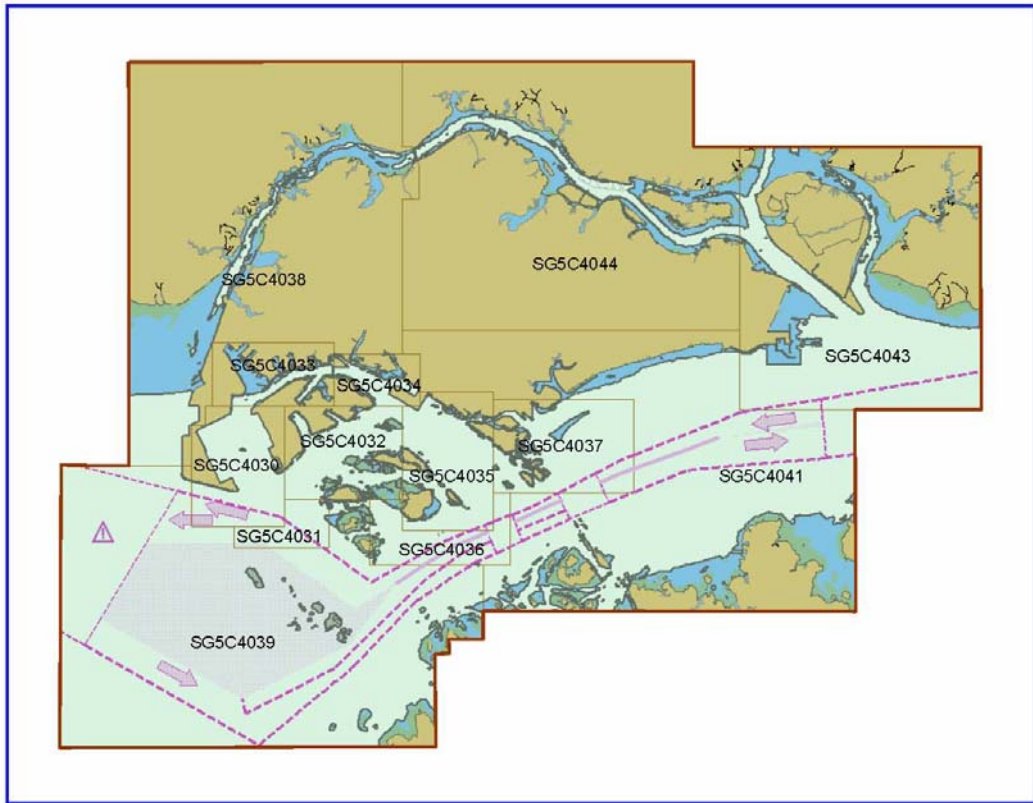
I  
INDEX OF CHARTS AND PUBLICATIONS

INDEX OF DUAL BADGED CHARTS



I  
INDEX OF CHARTS AND PUBLICATIONS

INDEX OF SINGAPORE ELECTRONIC NAVIGATIONAL CHARTS (ENC)



## II NEW PUBLICATIONS

### NEW EDITION DUAL BADGED CHARTS TO BE PUBLISHED ON 21 MAY 2009

The following new edition charts are jointly produced by MPA, Hydrographic Department and the United Kingdom Hydrographic Office :

Chart Number	:	4036
Title	:	Port of Singapore – Raffles Lighthouse To The Sisters
Coverage	:	Lat 1° 09.40' N 1° 13.47' N Long 103° 44.20' E 103° 50.13' E
Scale	:	1 : 10 000
Date Published	:	21 May 2009
Size of Chart	:	1100.0 X 750.1mm
Remarks	:	This new edition includes updated surveys covering these areas : <ul style="list-style-type: none"> <li>• Southern Fairway.</li> <li>• Jong Fairway.</li> <li>• Western Anchorages.</li> <li>• North of Pulau Semakau.</li> <li>• Approaches to Shell SBM.</li> </ul>

The existing chart of the same number published on 5 July 2007 is superseded.

Chart Number	:	4037
Title	:	Port of Singapore – Keppel Harbour, Tanjong Pagar Terminal and Approaches
Coverage	:	Lat 1° 12.52' N 1° 16.59' N Long 103° 49.40' E 103° 55.34' E
Scale	:	1 : 10 000
Date Published	:	21 May 2009
Size of Chart	:	1101.8 X 750.1mm
Remarks	:	This new edition includes updated surveys covering these areas : <ul style="list-style-type: none"> <li>• East Keppel Fairway.</li> <li>• Eastern Fairway.</li> <li>• Southern Fairway.</li> <li>• Sisters Fairway.</li> <li>• Eastern Anchorage.</li> <li>• East of Brani Causeway.</li> <li>• Sentosa Cove.</li> <li>• South of Marina South.</li> </ul>

The existing chart of the same number published on 24 May 2007 is superseded.

II  
NOTICES TO MARINERS AND CHART CORRECTIONS

<b>SP1/GSP1</b>	4Ed 15/01/09 Last NM 26/2009	(HD/HY/C00100509)		<b>*NM 40/2009</b>
<b>Substitute</b>	 <b>Obstn</b> for  Q(6)+LFl.15s4m6M Second Bukom (collapsed)		1°14.18'N 103°46.44'E	
		(HD/HE025/45/2009)		<b>*NM 41/2009</b>
<b>Delete</b>			1°24.31'N 104°01.21'E	
		(HD/HY/G00102209)		<b>*NM 42/2009</b>
<b>Delete</b>	 <i>Wk</i>		1°13.71'N 103°37.67'E	
		(HD/HE025/49/2009)		<b>*NM 43/2009</b>
<b>Substitute</b>	 <b>Fl(2)R.5s PKHV 5</b> for  Fl.R.2,5s Ampang		1°16.15'N 103°47.66'E	
<hr/>				
<b>501</b>	4Ed 21/09/06 Last NM 7/2009	(HD/HY/C00111607)		<b>*NM 44/2009</b>
<b>Substitute</b>	 <b>Wk</b> for  <b>Obstn</b>		1°12.08'N 103°48.22'E	
<hr/>				

**II**  
**TEMPORARY AND PRELIMINARY NOTICES**

**201**                    3Ed 5/10/07 Last 27/2009                    (Peninsular Malaysia NM 16(T)/2009)                    **NM 45T/2009**

**Insert**                    Mudah Selatan Radar Beacon **(inoperative)**                    1°25-20'N                    103°11-20'E

---

**202**                    5Ed 19/10/06 Last 35/2009                    (Peninsular Malaysia NM 16(T)/2009)                    **NM 45T/2009**

**Insert**                    Mudah Selatan Radar Beacon **(inoperative)**                    1°25-20'N                    103°11-20'E

(Peninsular Malaysia NM 17(T)/2009)                    **NM 46T/2009**

**Insert**                    Pulau Mungging Radar Beacon **(inoperative)**                    1°21-73'N                    104°17-89'E

---

**500**                    5Ed 30/08/07 Last 133/2008                    (Peninsular Malaysia NM 16(T)/2009)                    **NM 45T/2009**

**Insert**                    Mudah Selatan Radar Beacon **(inoperative)**                    1°25-20'N                    103°11-20'E

---

**502**                    4Ed 25/09/08 Last 14/2009                    (Peninsular Malaysia NM 17(T)/2009)                    **NM 46T/2009**

**Insert**                    Pulau Mungging Radar Beacon **(inoperative)**                    1°21-73'N                    104°17-89'E

---

**503**                    3Ed 25/09/08                    (Peninsular Malaysia NM 17(T)/2009)                    **NM 46T/2009**

**Insert**                    Pulau Mungging Radar Beacon **(inoperative)**                    1°21-73'N                    104°17-89'E

---

### III NAVIGATIONAL INFORMATION

#### \*(NM 47/2009) PORT MARINE NOTICES

The following PMNs have been shortlisted, as they would be of particular interest to mariners.

These notices can be accessed directly from MPA website:

[http://www.mpa.gov.sg/sites/port\\_and\\_shipping/circulars\\_and\\_notices/port\\_marine\\_notices.page](http://www.mpa.gov.sg/sites/port_and_shipping/circulars_and_notices/port_marine_notices.page)

<b>PMN No.</b>	<b>Subject</b>
207/2008	Dredging works in East Keppel Fairway and its vicinity.
218/2008	Construction of seawall and land reclamation in Cruise Bay.
220/2008	Reclamation of Jurong Island Phase 4.
221/2008	Reclamation work at Tuas View extension.
2/2009	Marine Jetty (MJ10) construction works at OILTANKING ODFJELL, Jurong Island.
7/2009	Sand mining at Area 1 and dumping at (i) Jurong Island LNG Project and (ii) Pasir Panjang Terminal Project Working Areas.
9/2009	Marine jetty construction works at Loyang, off Sungei Selarang.
10/2009	Dredging and construction of Berths (P13 to P18) and stacking/storage yards at Pasir Panjang Terminal.
12/2009	Marine construction and dredging works at ExxonMobil Pesek Berth 6.
13/2009	Dredging and marine construction works at Sungei Serangoon.
16/2009	Marine construction works off Marina Barrage.
18/2009	Reclamation at Pasir Panjang Terminal and Pasir Panjang Panjang Wharves.
20/2009	Installation of additional fenders and cat-ladders at Berth 9, Brani Terminal.
25/2009	A) Maintenance dredging works at Tanjong Pagar, Keppel and Brani Terminals. B) Upgrading of Berth K12 at Keppel Terminal.
27/2009	Dredging and bedding layer operations from Jurong Island to Pulau Ular.
30/2009	Slope protection works on St John's Island.
31/2009	A) Dredging operations from Jurong Island to Pulau Ular and B) Bedding layer and wire lay operations from Jurong Island to Pulau Ular.
37/2009	Marine soil investigation off Marina East.
38/2009	Removal of underwater obstruction at Marina South – Phase II.
41/2009	Dredging works at East Keppel Fairway.
43/2009	Marine Jetty construction works at Tuas Basin (Keppel Tuas Yard).
46/2009	Backfilling operations from Jurong Island to Pulau Ular.
47/2009	Reclamation work at Tuas View Extension.

### III NAVIGATIONAL INFORMATION

\*(NM 48/2009)

#### **SINGAPOREAN PRINT ON DEMAND (POD) CHARTS**

**Print On Demand (POD)** Charts are the most up-to-date paper nautical charts printed for navigational use. These nautical charts are produced in accordance with the International Hydrographic Organisation (IHO) charting specifications. These official nautical charts are continually updated to the latest Notices to Mariners before they are printed and sold to users.

These POD Charts include 200, 201, 202, 500, 501, 502, 503.

#### **BENEFITS TO OUR CUSTOMERS**

##### **Convenience**

Customers need not make numerous hand corrections to the nautical charts before use. In addition the updated POD Charts are more accurate and reliable than offset printed charts with hand corrections.

##### **Clarity**

Clarity in the presentation of updated information as compared to lithographic printed charts, where in some cases there are several overlapping corrections over existing information.

##### **Coverage**

The POD Charts cover the Malacca and Singapore Straits, from One Fathom Bank to Horsburgh Lighthouse.

---

### III AMENDMENTS TO PUBLICATIONS

#### \*(NM 49/2009) UPDATING OF PUBLICATION "SINGAPORE PORT INFORMATION 2008/2009 EDITION"

1. Front inner cover.

##### RECORDS OF AMENDMENTS

Change of MPA web-site :

Delete	<a href="http://www.mpa.gov.sg/infocentre/publications/noticesmari.htm">www.mpa.gov.sg/infocentre/publications/noticesmari.htm</a>
Insert	<a href="http://www.mpa.gov.sg/sites/port_and_shipping/circulars_and_notices/singapore_notices_to_mariners(ntm).page">http://www.mpa.gov.sg/sites/port_and_shipping/circulars_and_notices/singapore_notices_to_mariners(ntm).page</a>

Page 92

##### NAVIGATIONAL CHANNELS – CONTROLLING DEPTHS

Change of MPA web-site :

Delete	<a href="http://www.mpa.gov.sg/portdevelopment/guidelines_procedures/guidelines_frontpage.htm">http://www.mpa.gov.sg/portdevelopment/guidelines_procedures/guidelines_frontpage.htm</a>
Insert	<a href="http://www.mpa.gov.sg/sites/pdf/navigational_depths.pdf">http://www.mpa.gov.sg/sites/pdf/navigational_depths.pdf</a>

2. Page 112

##### CHARACTERISTICS OF AIDS TO NAVIGATION EAST JURONG CHANNEL (Cont/)

Insert the following:

Name of Beacon/Buoy	Delete	Insert
<b>Gatx West Light (Jetty West End)</b>	Gatx West Light (Jetty West End)	<b>OVPJ West Light (Jetty West End)</b>
<b>Gatx East Light (Jetty East End)</b>	Gatx East Light (Jetty East End)	<b>OVPJ East Light (Jetty East End)</b>
<b>Gatx Buoy</b>	Gatx Buoy	<b>OVPJ Buoy</b>

Source : HE025/047/2009, HE025/048/2009, HE025/046/2009.

3. Page 133 - Item 1

##### TANJONG PAGAR TERMINAL (PSA Corporation Ltd) (1°16.0'N, 103°51.0'E)

Berth	Depth Alongside (Year Surveyed)	
	Delete	Insert
<b>T5</b>	14.8m(2002)	<b>15.3m(2009)</b>

Source : HD/HY Code B00104409

4. Page 134 - Item 2

##### KEPPEL TERMINAL (PSA Corporation Ltd) (1°16.0'N, 103°50.0'E)

Berth	Depth Alongside (Year Surveyed)		Controlling Depth In Approaches	
	Delete	Insert	Delete	Insert
<b>K13</b>	13.8m(2002)	<b>15.5m(2009)</b>	15.1m	<b>15.5m</b>

Source : HD/HY Code B00102809

**III**  
**AMENDMENTS TO PUBLICATIONS**

<b>Berth</b>	<b>Depth Alongside (Year Surveyed)</b>	
	Delete	Insert
<b>K20</b>	10.0m(2002)	<b>10.0m(2009)</b>
<b>K23</b>	9.9m(2008)	<b>10.0m(2009)</b>

Source : HD/HY Code B00102409, B00104309

5. Page 145 - Item 20

**JURONG TERMINAL (JURONG PORT PTE LTD) (1°18.3'N, 103°43.1'E)**

<b>Berth</b>	<b>Depth Alongside (Year Surveyed)</b>	
	Delete	Insert
<b>J11</b>	9.9m(2008)	<b>10.2m(2009)</b>

Source : HD/HY Code J00101809

**IV**  
**REPRINT OF RADIO NAVIGATIONAL WARNINGS**

TT173

VSLS IN EAST JOHOR STRAIT ARE ADVISED TO NAVIGATE WITH CAUTION WHEN NEAR THE PROJECT AREAS OFF PU.TEKONG, PU.SERANGOON, CHANGI AND MALANG PAPAN AS SHALLOW WATER AREAS EXIST. VSLS ARE ADVISED TO KEEP LOOKOUT FOR TUGS AND BARGES NAVIGATING NEAR THE PROJECT AREAS AND PASSENGER FERRIES CROSSING BETWEEN CHANGI AND PULAU TEKONG AND VICINITY OF PASIR GUDANG.

TT352

DAYMARK SIGNALS AT RAFFLES LIGHT HOUSE IS OUT OF ORDER.

TT611

A SHIP REPORTED LOSING HER PORT ANCHOR AND 12 SHACKLES OF ANCHOR CHAIN, IN APROX POSN 01°11.55'N 103°52.52'E, OFF BATU BERHENTI BEACON.

TT619

DREDGER GERARDUS MERCATOR/QUEEN OF PENTA OCEAN IS CONDUCTING DREDGING OPERATIONS IN POSITIONS BOUNDED BY COORDINATES:

01°15.827' N 103°57.737' E

01°14.865' N 103°58.134' E

01°13.298' N 103°54.401' E

01°13.884' N 103°54.131' E

VESSELS ARE ADVISED TO PROCEED AT SAFE SPEED AND TO GIVE WIDE BERTH.

TT631

A WOODEN CRAFT SUNK AT 01°19.49'N 104° 02.79'E.

TT753

A SMALL WOODEN CARGO BOAT 10M IN LENGTH SUNK AT 01°15.73'N 103°32.1'E.

TT755 (AMENDED 180109 1314Z)

THE POSITION OF THE PROBABLE SUNKEN CRAFT IS LAT 01°18.71'N LONG 104°21.54'E WITH A LEAST DEPTH OF 57 METRES.

TT757

A TUG WAS REPORTED SUNK IN LAT 01°22.41'N LONG 104°23.15'E.

TT779 (AMENDED 040420Z)

31 MAR 2009 1245UTC

SALVAGE OPERATIONS ARE IN PROGRESS BY TWO TUGBOATS AND A BARGE IN POSITION 01°22.34'N 104°23.30'E, VESSELS ARE ADVISED TO KEEP A LOOKOUT, PASS AT SLOW SPEED AND TO GIVE A WIDE BERTH.

TT782

TUGBOAT "ORIENTAL BALTIC" WAS REPORTED GROUNDED OFF HELEN MAR REEF AND HER BARGE "TERAS 3652" WAS REPORTED ADRIFT , LAST KNOWN POSITION LAT 01°07.46'N LONG 103°46.4'E.VESSELS IN THE VICINITY ARE ADVISED TO NAVIGATE WITH CAUTION & REPORT ANY SIGHTINGS OF THE ADRIFT BARGE TO SPOCC AT TLX 87-20021 FAX 65-62279971, TEL 65-62265539 OR EMAIL POCC@MPA.GOV.SG

ISSUED BY SINGAPORE PORT OPERATION CONTROL CENTRE  
(as at 19 April 2009)

---

V  
**REPRINT OF ADMIRALTY NOTICES TO MARINERS  
 FOR DUAL BADGED CHARTS**


These notices can be accessed directly from UKHO Website:

<http://www.ukho.gov.uk/ProductsandServices/MaritimeSafety/Pages/NMPublic.aspx>

**1790\* SINGAPORE – East Johor Strait – Pulau Ubin Westwards – Tajam Southwards – Legend.  
 Mooring buoy.**

Source: Maritime and Port Authority of Singapore

**Chart 4044** [ *previous update 1211/09* ] WGS84 DATUM

Insert legend, **Numerous mooring buoys**, centred on: 1° 25'.11N., 103° 55'.62E.  
 1° 24'.88N., 103° 56'.09E.

**Chart 4044 (plan B, Pelabuhan Johor (Johor Port))** [ *previous update 1211/09* ] WGS84 DATUM

Insert  1° 25'.207N., 103° 55'.596E.

**1791\* SINGAPORE – Keppel Harbour – Brani Terminal, Keppel Terminal and Tanjong Pagar Terminal - Dredged depths.**

Source: Maritime and Port Authority of Singapore

**Chart 4037** [ *previous update 1210/09* ] WGS84 DATUM

Amend dredged depth to, **12.0m (2008)**, centred on: 1° 15'.792N., 103° 49'.758E.  
 dredged depth to, **15.0m (2008)**, centred on: 1° 15'.832N., 103° 49'.902E.  
 dredged depth to, **11.0m (2008)**, centred on: 1° 15'.804N., 103° 50'.774E.  
 dredged depth to, **15.5m (2008)**, centred on: 1° 15'.760N., 103° 50'.667E.  
 dredged depth to, **10.0m (2008)**, centred on: 1° 15'.901N., 103° 49'.691E.  
 dredged depth to, **10.1m (2008)**, centred on: 1° 15'.846N., 103° 49'.594E.


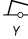

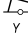

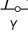

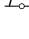

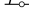
**1792\* SINGAPORE – Sentosa – Siloso Beach Westwards to P. Palawan Northwards – Buoyage.  
 Mooring buoys.**

Source: Maritime and Port Authority of Singapore

**Chart 4034** [ *previous update New Edition 19/02/2009* ] WGS84 DATUM

Substitute  **Fl.Y.10s AZ4** for  **Fl.Y.10s AZ4** 1° 15'.225N., 103° 48'.576E.

**Chart 4035** [ *previous update New Edition 19/02/2009* ] WGS84 DATUM

Substitute  **Fl.Y.6s AZ2** for  **Fl.Y.6s AZ2** 1° 15'.034N., 103° 48'.967E.  
 **Fl.Y.8s AZ3** for  **Fl.Y.8s AZ3** 1° 14'.989N., 103° 48'.937E.  
 **Fl.Y.10s AZ4** for  **Fl.Y.10s AZ4** 1° 15'.225N., 103° 48'.576E.  
 for  1° 15'.095N., 103° 48'.924E.  
 for  1° 15'.082N., 103° 48'.909E.

**1793\* SINGAPORE – Jurong Island – Sinki Fairway – Banyan Basin and Sakra Basin – Dredged area. Depths.  
 Works. Coastline. Dolphins.**

Source: Maritime and Port Authority of Singapore

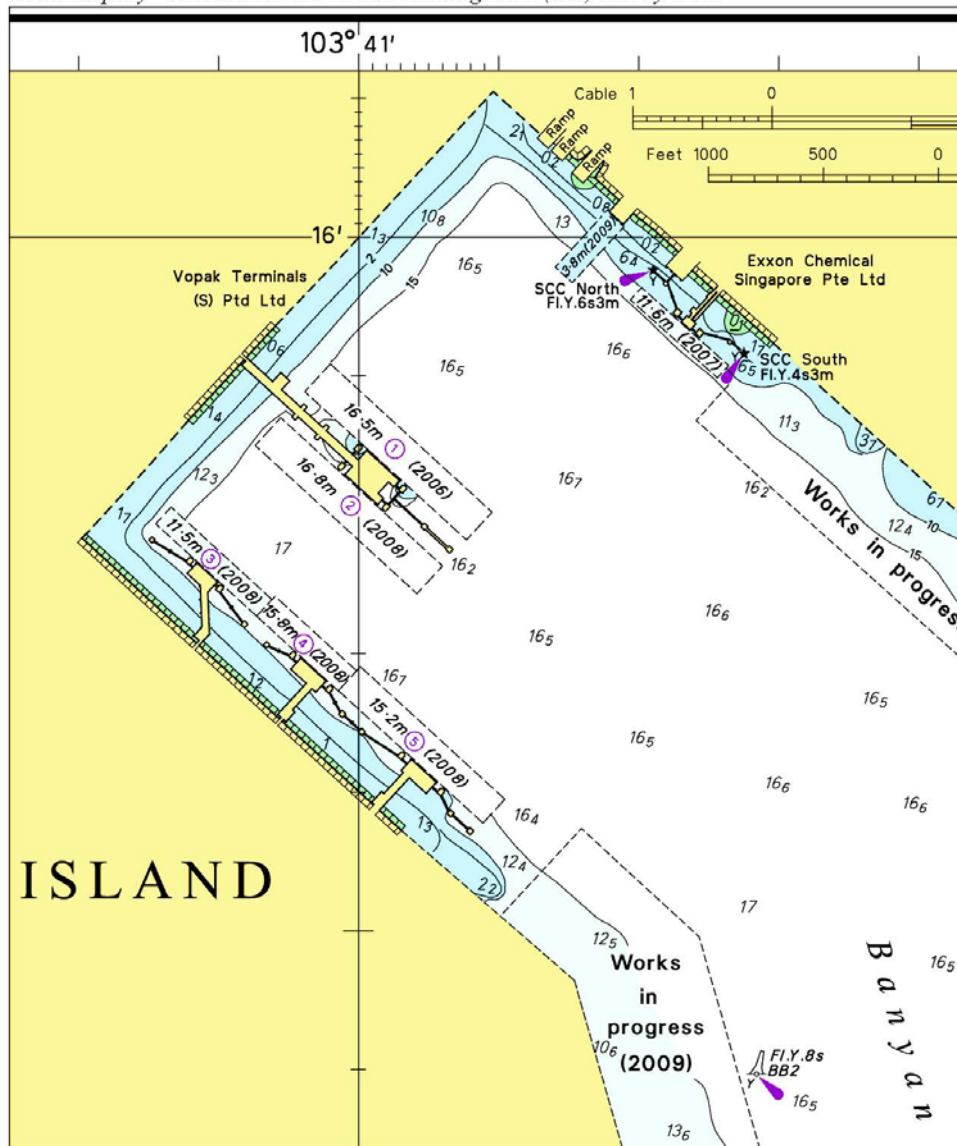
**Chart 4031** [ *previous update 578/09* ] WGS84 DATUM

Insert the accompanying block, showing a new dredged area and amendments to depths and works, centred on: 1° 15'.750N., 103° 41'.100E.



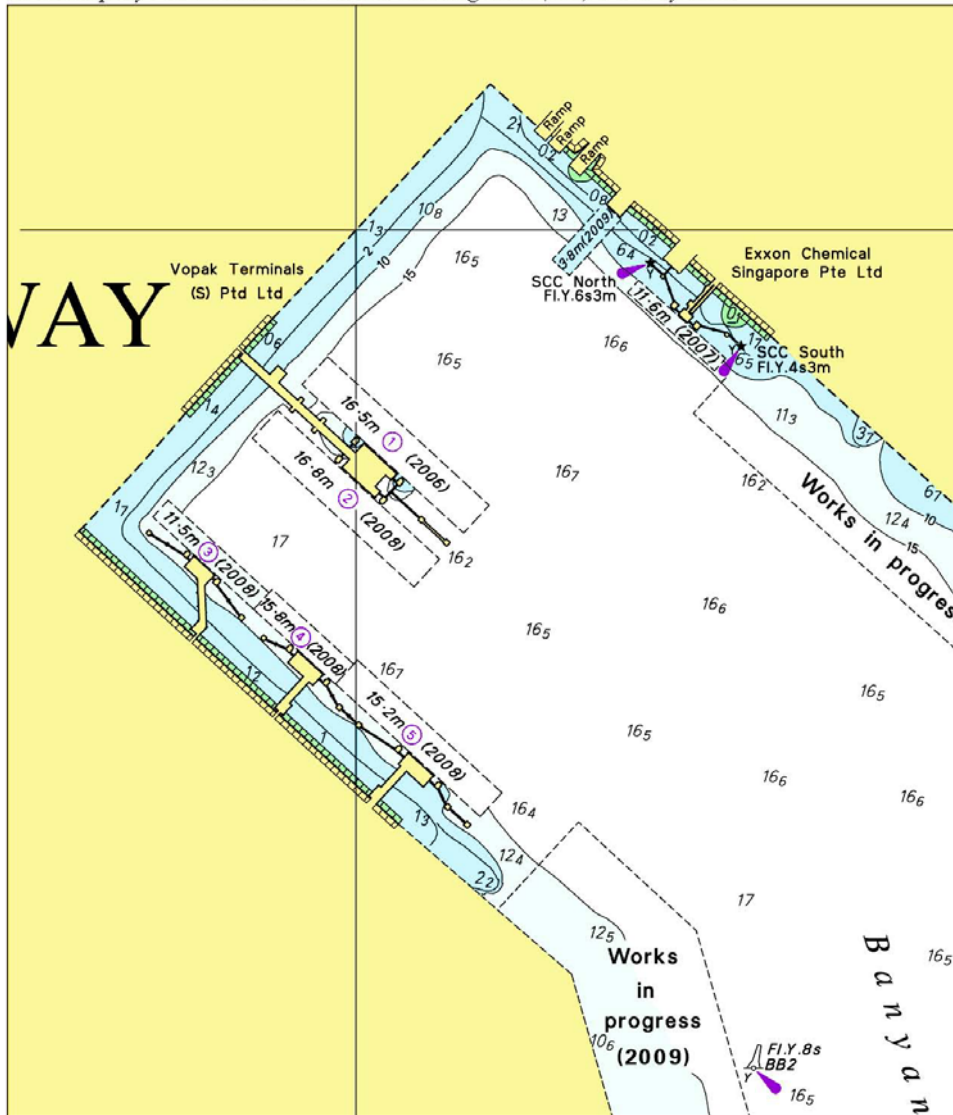
V  
REPRINT OF ADMIRALTY NOTICES TO MARINERS  
FOR DUAL BADGED CHARTS

To accompany Notice to Mariners 1793/09. Image Size (mm) 152 by 126.7



V  
REPRINT OF ADMIRALTY NOTICES TO MARINERS  
FOR DUAL BADGED CHARTS

To accompany Notice to Mariners 1793/09. Image Size (mm) 147.5 by 126.7



**SINGAPORE ELECTRONIC NAVIGATIONAL CHARTS (ENC) DISTRIBUTORS**  
Please approach any of the appointed distributors to purchase the Singapore ENC.

<b>CONTACT PERSON/ DESIGNATION</b>	<b>ADDRESS</b>	<b>TELEPHONE/FAX NO./EMAIL/WEBSITE</b>
Mr Chong Chee Meng General Manager	DPM (Singapore) Pte Ltd 1 Maritime Square, #09-72 Harbour Front Centre, Singapore 099253	Tel. No.: +65 6270 4060 Fax No.: +65 6276 3858 Email: <a href="mailto:sales@dpmsingapore.com.sg">sales@dpmsingapore.com.sg</a> Website: <a href="http://www.dpmsingapore.com.sg">http://www.dpmsingapore.com.sg</a>
Mr Hamzah Akhbar MDS Branch Manager	Kelvin Hughes(S) Pte Ltd 8 Pandan Avenue #02-00, Singapore 609384	Tel. No.: +65 6545 9880 ext.24 Fax No.: +65 6545 8892 Email: <a href="mailto:hamzah.akhbar@khsing.com">hamzah.akhbar@khsing.com</a> Website: <a href="http://www.kelvinhughes.co.uk">http://www.kelvinhughes.co.uk</a>
Mr Looi Keen Wai Regional Sales Manager	Maritime Information Systems (MARIS) 52, Telok Blangah Road #01-06, Telok Blangah Centre, Singapore 058809	Tel. No.: +65 6276 1472 Fax No.: +65 6276 1473 Email: <a href="mailto:support@maris.sg">support@maris.sg</a> Website: <a href="http://www.maris.no">http://www.maris.no</a>
Ms Kathrine Bjaroy Marketing Coordinator	Maritime Information System AS (MARIS) Danholmen 25, 3128 Notteroy, Norway	Tel. No.: +47 33 30 42 50 Fax No.: +47 33 30 42 51 Email: <a href="mailto:roar.moe@maris.no">roar.moe@maris.no</a> Website: <a href="http://www.maris.no">http://www.maris.no</a>
Mr Dave Chow En Wai	Motion Smith 15 Jalan Kilang Barat #08-01/05 Frontech Centre Singapore 159357	Tel. No.: +65 6220 5098 Fax No.: +65 6225 4902 Email: <a href="mailto:sales@motsmith.com">sales@motsmith.com</a> Website: <a href="http://www.motsmith.com">http://www.motsmith.com</a>
Mr Dominic Oliver	Transas Marine Pacific Pte Ltd 750C Chai Chee Road, #04-07, Technopark@Chai Chee, Singapore 469003	Tel. No.: +65 6443 3061 Fax No.: +65 6443 3025 Email: <a href="mailto:dominic@transas.com.sg">dominic@transas.com.sg</a> Website: <a href="http://www.transas.com.sg">http://www.transas.com.sg</a>
Mr Choy Kum Weng Director	Vector Services Pte Ltd 15 West Coast Highway, #02-14A Pasir Panjang Building Singapore 117861	Tel. No.: +65 6777 3602 Fax No.: +65 6777 9203 Email: <a href="mailto:kwchoy@pacific.net.sg">kwchoy@pacific.net.sg</a>
Mr George Arts President	Marine Press of Canada 640 Rue St-Paul Ouest, Suite 300 Montreal (QC) Canada, H3C1L9	Tel. No.: (514) 866-8342 Fax No.: (514) 866-9050 Email : <a href="mailto:sales@marinepress.com">sales@marinepress.com</a> Website: <a href="http://www.marinepress.com">http://www.marinepress.com</a>
Mr Thomas Wilde Superintendent	HanseNautic GmbH Bade & Hornig, Eckardt & Messtorff Herrengaben 31 D-20459 Hamburg, Germany	Tel. No.: +49 40 374 811-32 Fax No.: +49 40 366 400 Email: <a href="mailto:wilde@hansenautic.de">wilde@hansenautic.de</a> Website : <a href="http://www.HanseNautic.com">http://www.HanseNautic.com</a>
Ms Verena Borsos Manager	SevenCs AG + Co. KG Ruhrstrasse 90, D-22761 Hamburg, Germany	Tel. No.: +49 40 853 58 6940 Fax No.: +49 40 853 58 6949 Email: <a href="mailto:sales@chartworld.com">sales@chartworld.com</a> Website : <a href="http://www.sevencs.com">http://www.sevencs.com</a>
Mr Keiji Shimizu General Manager	Japan Hydrographic Association Electronic Charts Division Daiichi Sogo Bldg, 6F 1-6-6, Hanedakuko, Ota-ku, Tokyo 144-0041, Japan	Tel. No.: +81 3 5708 7093 Fax No.: +81 3 5708 7094 Email: <a href="mailto:enc-support@jha.jp">enc-support@jha.jp</a> Website: <a href="http://www.jha.jp">http://www.jha.jp</a>

**SINGAPORE ELECTRONIC NAVIGATIONAL CHARTS (ENC) DISTRIBUTORS**  
Please approach any of the appointed distributors to purchase the Singapore ENC.

<b>CONTACT PERSON/ DESIGNATION</b>	<b>ADDRESS</b>	<b>TELEPHONE/FAX NO./EMAIL/WEBSITE</b>
Mr Jester-Kim Foreign Business Department Manager	E_MLX Co. Ltd Ssangyong Research No.2 Lab Sinseong-Dong 100 Yusong-Gu, Daejoen 305-804, Korea (ROK)	Tel. No.: +82 42 865 1893 Fax No.: +82 42 865 1884 Email: <a href="mailto:Jester-kim@emlx.co.kr">Jester-kim@emlx.co.kr</a>
Mr C G Kim Managing Director	Korean Ocean Development Co. Ltd 2ND Fl, Dongbang Bldg, 25-4, 4 Ga Jungang-Dong, Jung-Gu, Busan, South Korea	Tel. No.: +82 514 66 0760 Fax No.: +82 514 65 9345 Email: <a href="mailto:sales@chartkorea.com">sales@chartkorea.com</a> Website: <a href="http://www.chartkorea.com">http://www.chartkorea.com</a>
Mr Kjell Nodland	Jeppesen Norway A/S P.O Box 212 , N-4379 Egersund, Norway	Tel No.: +47 514 64 700 Fax No: +47 514 64 701 Email: <a href="mailto:enc@c-map.no">enc@c-map.no</a> Website : <a href="http://www.c-map.no">http://www.c-map.no</a>
Ms Eva Hegland Sales, order and distributor support.	PRIMAR STAVANGER Lervigsveien 36, P.O Box 60, N-4001 Stavanger, Norway	Tel. No.: +47 51 93 9500 Fax No.: +47 51 93 9501 Email: <a href="mailto:sales@primar.org">sales@primar.org</a> Website : <a href="http://www.primar-stavanger.org">http://www.primar-stavanger.org</a>
Mrs Christine Trickett Product Manager	United Kingdom Hydrographic Office Admiralty Way, Taunton, Somerset TA1 2DN United Kingdom	Tel. No.: +44 (0)1823 337900 Fax No.: +44 (0)1823 284077 Emails: <a href="mailto:vargroup@ukho.gov.uk">vargroup@ukho.gov.uk</a> & <a href="mailto:christine.trickett@ukho.gov.uk">christine.trickett@ukho.gov.uk</a> Website: <a href="http://www.ukho.gov.uk">http://www.ukho.gov.uk</a>

---

### Agents for the Maritime and Port Authority of Singapore Publications

**Agent's name** : **DPM (Singapore) Pte Ltd**  
**Address** : 1 Maritime Square #09-72, HarbourFront Centre,  
Singapore 099253  
**Telephone** : (65) 6270 4060  
**Fax No.** : (65) 6276 3858  
**E-mail** : [sales@dpmsingapore.com.sg](mailto:sales@dpmsingapore.com.sg)  
**Internet Web Site** : <http://www.dpmsingapore.com.sg>

**Agent's name** : **E.W. Liner Charts & Publications Pte Ltd**  
**Address** : 102F, Pasir Panjang Road, #08-01, Citilink Warehouse Complex,  
Singapore 118530  
**Telephone** : (65) 6323 0773  
**Fax No.** : (65) 6323 0775  
**E-mail** : [ewliner@singnet.com.sg](mailto:ewliner@singnet.com.sg)  
**Internet Web Site** : <http://www.ewliner.com>

**Agent's name** : **Motion Smith**  
**Address** : 15 Jalan Kilang Barat  
#08-01/05 Frontech Centre,  
Singapore 159357  
**Telephone** : (65) 6220 5098  
: (After office hours: 8163 9993)  
**Fax No.** : (65) 6225 4902  
**E-mail** : [sales@motsmith.com](mailto:sales@motsmith.com)  
**Internet Web Site** : <http://www.motsmith.com>

---

## HYDROGRAPHIC NOTE - Instructions

1. Mariners are requested to notify the Chief Hydrographer, Maritime and Port Authority of Singapore, when new or suspected dangers to navigation are discovered, changes are observed in aids to navigation or where corrections to nautical publications may be necessary. Reports, which cannot be confirmed or are lacking in certain details should not be withheld.
2. Any ambiguities of time, positioning and depth should be stressed and any firm expectation of being able to check the information provided on a following voyage should be mentioned.
3. Mariners using satellite position fixing systems, eg. GPS, should provide details of equipment and datum used (where applicable). Where bearings (true or magnetic) are taken visually or by radar to fix a position, it should include more than two objects in order to provide a check on its accuracy. A position may also be defined by bearing and distance from a conspicuous object eg. beacon, lighthouse etc.
4. The note should include a tracing or a digital image of the chart used and the details should be clearly marked.
5. Echo sounders frequently register greater depths than the advertised maximum depth for the equipment, eg. a trace appearing at 50 metres may be in fact be 550 metres or even 1050 metres for equipment whose maximum depth is 500 metres. Erroneous depths caused by 2nd transmission error can usually be recognised by the following:
  - (a) the tracing being weaker than normal for the depth registered,
  - (b) the trace appearing to pass through the transmission line,
  - (c) the feathery nature of the trace.
6. An acknowledgement of receipt will be sent. When a Notice to Mariners is issued, the sender's vessel or name is quoted as the source unless the same information is also received in foreign Notices to Mariners.
7. Reports of shoals, uncharted dangers and defects in aids to navigation may also be made to the appropriate Singapore Port Operations Control Station on VHF Channels 10, 12, 14, 68 or 73.

**HYDROGRAPHIC NOTE**

To:

Chief Hydrographer  
Hydrographic Department  
Maritime and Port Authority of Singapore  
460 Alexandra Road PSA Building #20-00  
Singapore 119963

Tel : (65) 6375 1227  
Fax : (65) 6278 7646  
Email : [hydrographic@mpa.gov.sg](mailto:hydrographic@mpa.gov.sg)

**Sender's Contact Details** :

Date : .....

Name of Vessel : .....

Address of Sender : .....

Tel : ..... Fax : .....

Email : .....

**Nature of Observation** :

General Location : .....

Subject : .....

Position : Lat. .... Long. ....

Charts Used : .....

Date & Time of Observation : .....

Details : .....

.....

.....

.....

Attachment : .....

**Equipment Used** :

Type of Position Fixing : ..... GPS / DGPS ..... Others : .....

Type of Echo Sounder : .....

Name and Signature : .....

Ship's/Company's stamp : .....