



## SINGAPOREAN NOTICES TO MARINERS

SECTION	CONTENT	Page
I	Index of Charts & Publications	89
II	New Publications	94
	Notices to Mariners and Chart Corrections	96
	Temporary and Preliminary Notices	97
III	Navigational Information	98
	Amendments to Publications	100
IV	Reprint of Radio Navigational Warnings	101
V	Reprint of Admiralty Notices to Mariners for Dual Badged Charts	102

The monthly Notices to Mariners contain corrective information affecting charts published by the Hydrographic Department, Maritime and Port Authority of Singapore. The information contained in these Notices should be updated on the charts affected. Notices under Section II apply only to the particular Singaporean Chart(s) indicated.

Mariners are requested to notify the Chief Hydrographer, Maritime and Port Authority of Singapore, immediately on the discovery of new dangers or suspected dangers to navigation and of changes or defects in aids to navigation. See Hydrographic Note on back page.

The monthly Singaporean Notices to Mariners can be accessed directly from the MPA website:  
[http://www.mpa.gov.sg/sites/port\\_and\\_shipping/circulars\\_and\\_notices/singapore\\_notices\\_to\\_mariners\(ntm\).page](http://www.mpa.gov.sg/sites/port_and_shipping/circulars_and_notices/singapore_notices_to_mariners(ntm).page)

This service is offered free of charge.

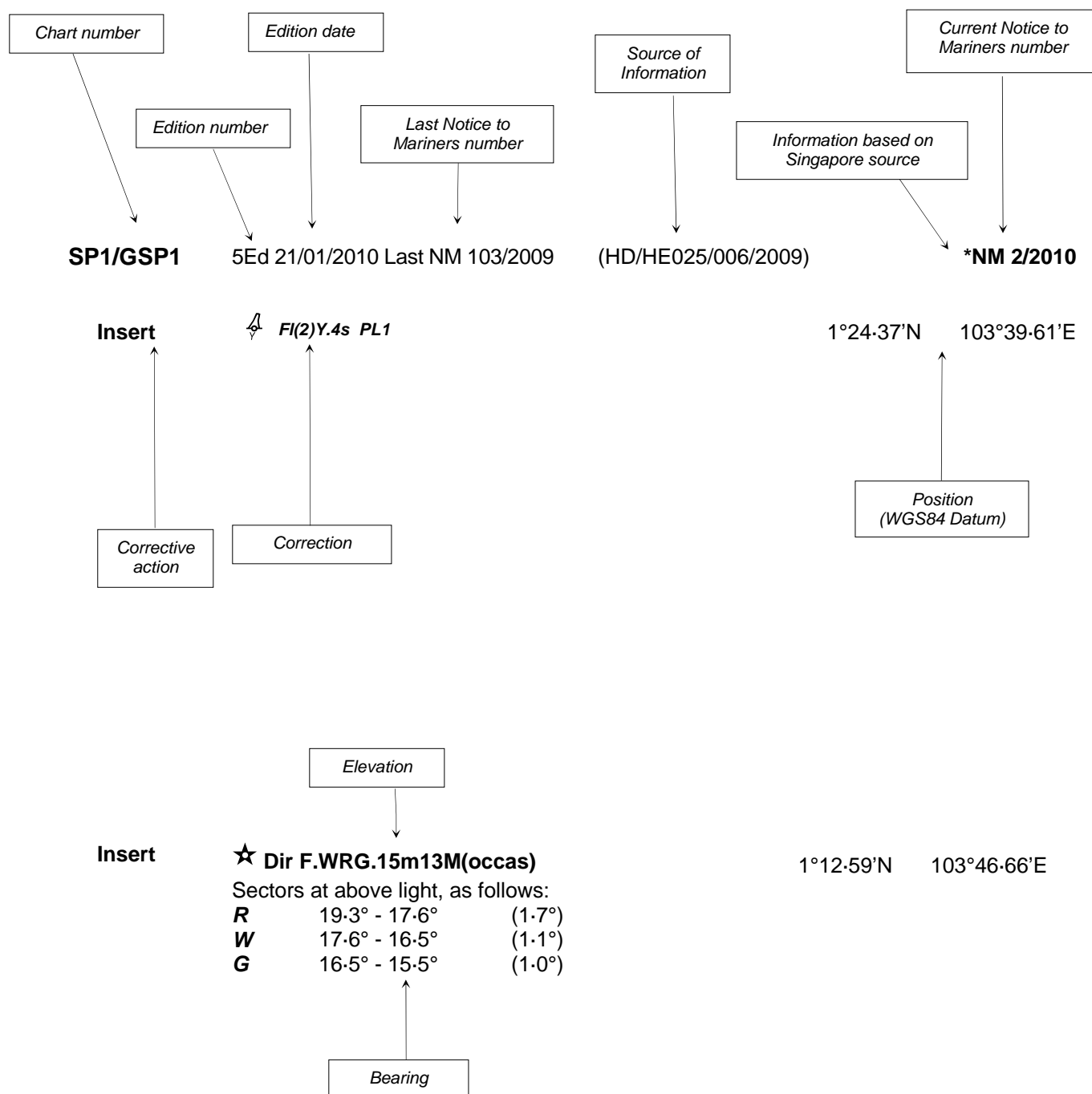
The Chief Hydrographer of  
Maritime and Port Authority of Singapore  
wishes all users of Singaporean and Dual Badged Charts

**A HAPPY LABOUR  
and  
VESAK DAY**

Hydrographic Department  
Maritime and Port Authority of Singapore  
460 Alexandra Road  
PSA Building #20-00  
Singapore 119963  
Tel: (65) 6375 1227  
Fax: (65) 6278 7646

## EXPLANATION OF FORMAT

The elements of a typical chart correction are explained below.



### Notes:

- Notice to Mariners number followed by:
  - T** indicates a Temporary Notice (eg. **\*NM 1T/2010**).
  - P** indicates a Preliminary Notice (eg. **\*NM 3P/2010**).
- Bearings are true reckoned clockwise from 000° to 359° ; those relating to lights are from seaward.
- Heights and elevations are above Mean High Water Springs.

**I**  
**INDEX OF CHARTS AND PUBLICATIONS**

**INDEX OF CHARTS AFFECTED**

DESCRIPTION	NOTICE NO.	PAGE NO.
Index of Singaporean Charts	-	91
Index of Dual Badged Charts	-	92
Index of Singapore Electronic Navigational Charts (ENC)	-	93
New Edition Singaporean Chart	-	94
New Edition Dual Badged Charts	-	95
Singaporean Chart SP1/GSP1	*41	96
Temporary and Preliminary notices	-	97
Port Marine Notices	*42	98
Singaporean Print-On-Demand (POD) Charts	*43	99
Amendments to Publications	*44	100
Reprint of Radio Navigational Warnings	-	101
Reprint of Admiralty Notices to Mariners for Dual Badged Charts	-	102 to 104
Singapore Electronic Navigational Charts (ENC) Distributors	-	105
Agents for the Maritime and Port Authority of Singapore Nautical Charts and Publications	-	106

\*Denotes information are based on Singaporean source.

I  
**INDEX OF CHARTS AND PUBLICATIONS**

**INDEX OF NOTICES**

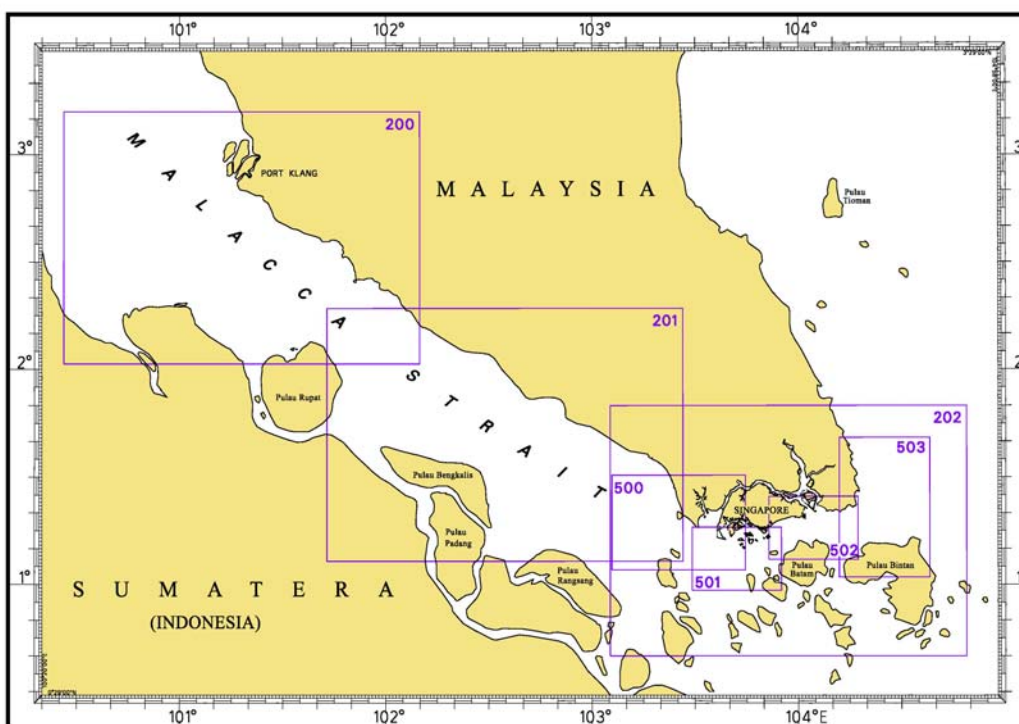
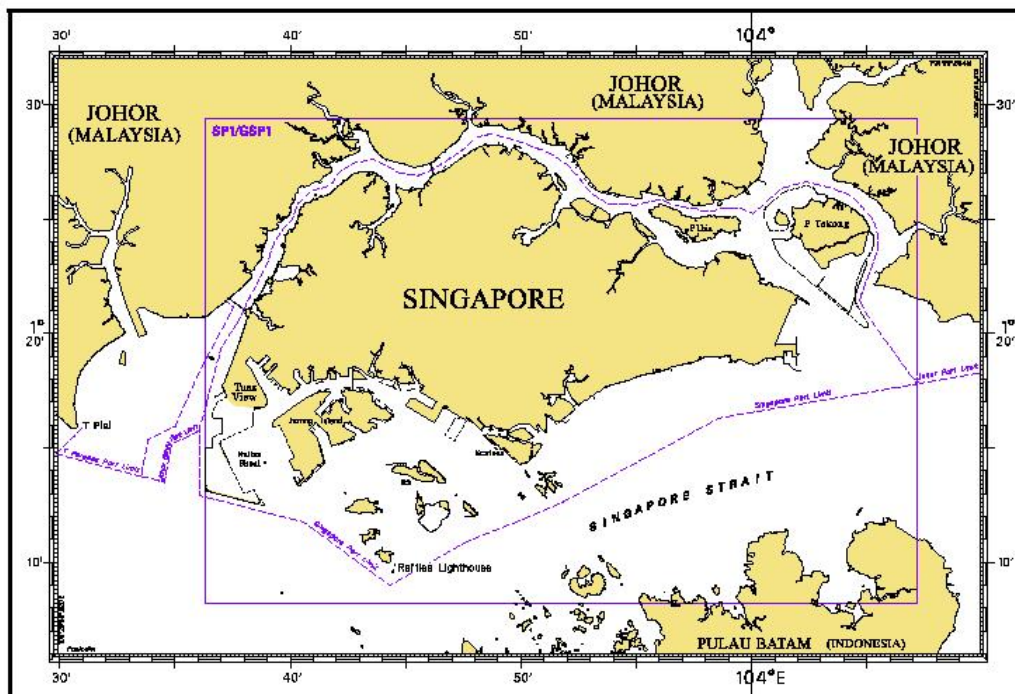
NOTICE NO.	DESCRIPTION	PAGE NO.	NOTICE NO.	DESCRIPTION	PAGE NO.
-	Index of Singaporean Charts	91			
-	Index of Dual Badged Charts	92			
-	Index of Singapore Electronic Navigational Charts (ENC)	93			
-	New Edition Singaporean Chart	94			
-	New Edition Dual Badged Charts	95			
*41	SP1/GSP1	96			
-	Temporary and Preliminary notices	97			
*42	Port Marine Notices	98			
*43	Singaporean Print-On-Demand (POD) Charts	99			
*44	Amendments to Publications	100			
-	Reprint of Radio Navigational Warnings	101			
-	Reprint of Admiralty Notices to Mariners for Dual Badged Charts	102 to 104			
-	Singapore Electronic Navigational Charts (ENC) Distributors	105, 106			
-	Agents for the Maritime and Port Authority of Singapore Nautical Charts and Publications	106			

\* Denotes information are based on Singaporean source.

# I

## INDEX OF CHARTS AND PUBLICATIONS

### INDEX OF SINGAPOREAN CHARTS



#### Notes:

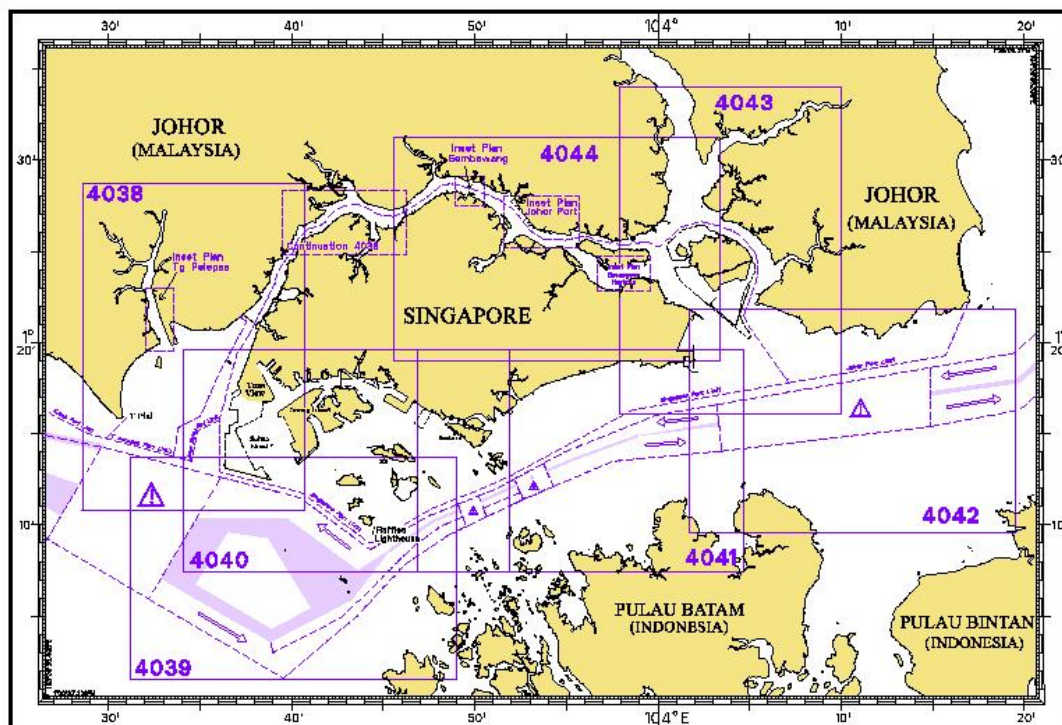
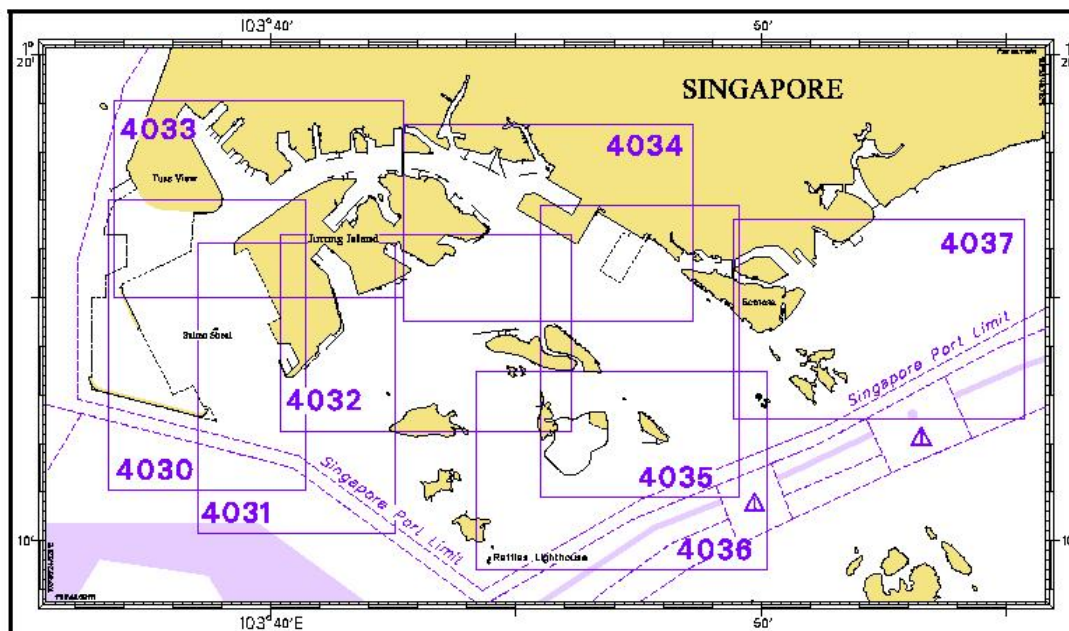
Updated SINGAPOREAN Charts are available through our Print-On-Demand (POD) Chart Service. For more information, refer to Section III – Navigational Information and these charts can be purchased from our authorised Chart Agents:

DPM (Singapore) Pte Ltd, E.W. Limer Charts & Publications Pte Ltd and Motion Smith.

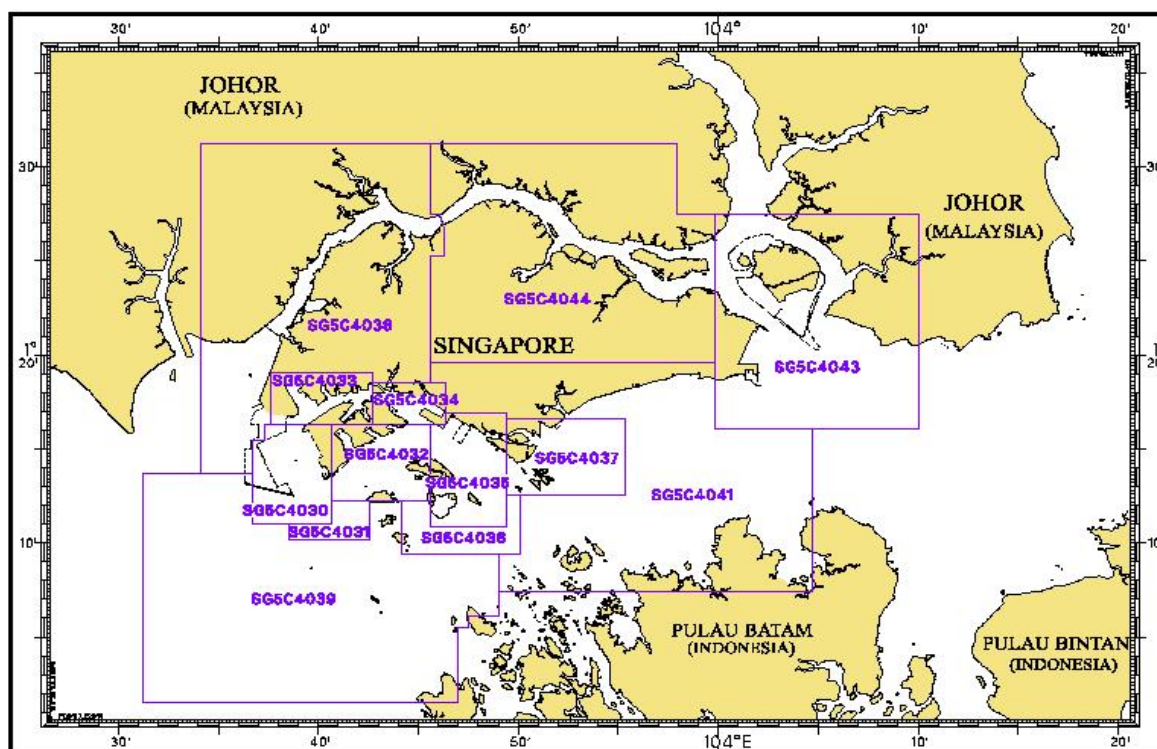
# I

## INDEX OF CHARTS AND PUBLICATIONS

### INDEX OF DUAL BADGED CHARTS





**INDEX OF CHARTS AND PUBLICATIONS****INDEX OF SINGAPORE ELECTRONIC NAVIGATIONAL CHARTS (ENC)****INDEX OF SINGAPORE ENC**

ENC Name	ENC Title	Latitude	Longitude
SG5C4030	West Jurong Anchorages and Temasek Fairway	1°11.050'N 1°16.300'N	103°36.700'E 103°40.640'E
SG5C4031	Western Approaches to Jurong Island	1°10.150'N 1°12.250'N	103°38.500'E 103°42.530'E
SG5C4032	Sinki Fairway	1°12.250'N 1°16.300'N	103°40.640'E 103°45.580'E
SG5C4033	Tuas Bay, West Jurong Channel and Pesek Basin	1°16.300'N 1°19.050'N	103°37.600'E 103°42.700'E
SG5C4034	East Jurong Channel, Pasir Panjang Terminal and West Keppel Fairway	1°16.300'N 1°18.550'N	103°42.700'E 103°46.356'E
SG5C4035	Western Anchorages, Jong Fairway and Cruise Bay	1°10.900'N 1°16.900'N	103°45.580'E 103°49.425'E
SG5C4036	Raffles Lighthouse to The Sisters	1°09.400'N 1°12.520'N	103°44.200'E 103°50.130'E
SG5C4037	Keppel Harbour, Tanjong Pagar Terminal and Approaches	1°12.520'N 1°16.590'N	103°49.425'E 103°55.340'E
SG5C4038	Johor Strait – Western Part	1°13.700'N 1°31.200'N	103°34.100'E 103°46.300'E
SG5C4039	Western Approaches to Main Strait	1°01.500'N 1°13.700'N	103°31.200'E 103°49.000'E
SG5C4041	Pulau Sebarok to Changi	1°07.400'N 1°19.600'N	103°45.600'E 103°04.700'E
SG5C4043	Kuala Johor and Sungai Johor	1°16.100'N 1°27.500'N	103°59.800'E 104°10.000'E
SG5C4044	Johor Strait – Eastern Part	1°19.600'N 1°31.200'N	103°45.600'E 103°59.800'E

## II NEW PUBLICATIONS

### NEW EDITION SINGAPOREAN CHART PUBLISHED ON 1<sup>ST</sup> APRIL 2010

<b>Chart No.</b>	:	503
<b>Title</b>	:	Eastern Approaches and Entrance To Singapore Strait
<b>Coverage</b>	:	Lat 1° 02.00' N 1° 41.06' N Long 104° 11.89' E 104° 38.17' E
<b>Scale</b>	:	1: 75 000
<b>Date Published</b>	:	1 <sup>st</sup> April 2010
<b>Size of Chart</b>	:	649.9 x 960.0 mm
<b>Remarks</b>	:	This new edition includes new submarine cables and updated surveys around Pedra Branca.

The existing chart of the same number published on 25<sup>th</sup> September 2008 is superseded.



## II NEW PUBLICATIONS

### NEW EDITION DUAL BADGED CHARTS PUBLISHED ON 8<sup>TH</sup> APRIL 2010


<b>Chart Number</b>	:	4034
<b>Title</b>	:	Port of Singapore – East Jurong Channel, Pasir Panjang Terminal and West Keppel Fairway
<b>Coverage</b>	:	Lat 01° 14-50' N 01° 18-55' N Long 103° 42-70' E 103° 48-60' E
<b>Scale</b>	:	1: 10 000
<b>Date Published</b>	:	8 <sup>th</sup> April 2010
<b>Size of Chart</b>	:	1094.3 x 746.3 mm
<b>Remarks</b>	:	This new edition includes updated surveys covering these areas: <ul style="list-style-type: none"> <li>• West of Cyrene Reef</li> <li>• East Jurong Channel</li> <li>• Approaches to Pasir Panjang Ferry Terminal</li> </ul>

The existing chart of the same number published on 8<sup>th</sup> Oct 2009 is superseded.

<b>Chart Number</b>	:	4035
<b>Title</b>	:	Port of Singapore – Western Anchorages, Jong Fairway and Cruise Bay
<b>Coverage</b>	:	Lat 01° 10-90' N 01° 16-90' N Long 103° 45-50' E 103° 49-54' E
<b>Scale</b>	:	1: 10 000
<b>Date Published</b>	:	8 <sup>th</sup> April 2010
<b>Size of Chart</b>	:	749.4 x 1105.7mm
<b>Remarks</b>	:	This new edition includes updated surveys covering these areas: <ul style="list-style-type: none"> <li>• Approaches to Pasir Panjang Ferry Terminal</li> <li>• Shell SBM Area</li> <li>• East Jurong Channel</li> <li>• West of Brani Causeway</li> </ul>

The existing chart of the same number published on 8<sup>th</sup> Oct 2009 is superseded.

**II**  
**NOTICES TO MARINERS AND CHART CORRECTIONS**

<b>SP1/GSP1</b>	5Ed 21/01/10 Last NM 33/2010	(HD/HE025/028/2010)	<b>*NM 41/2010</b>
Insert	 <b>Fl.Y.4s</b>	1°17-50'N	103°37-03'E

---

**II**  
**TEMPORARY AND PRELIMINARY NOTICES**

Nil

### III NAVIGATIONAL INFORMATION

#### \*(NM 42/2010) PORT MARINE NOTICES

The following PMNs have been shortlisted, as they would be of particular interest to mariners.

These notices can be accessed directly from MPA website:

[http://www.mpa.gov.sg/sites/port\\_and\\_shipping/circulars\\_and\\_notices/port\\_marine\\_notices.page](http://www.mpa.gov.sg/sites/port_and_shipping/circulars_and_notices/port_marine_notices.page)

PMN No.	Subject
6/2010	Ferry route between West Coast ECC Jetty (WCECC) and Pulau Ular Ferry Terminal (PUFT).
7/2010	Marine construction works off Marina Barrage.
10/2010	Dredging operations at Banyan Basin (Selat Banyan West Jetty).
11/2010	Reclamation at Pasir Panjang Terminal and Pasir Panjang Whaves.
12/2010	Construction of physical barrier off PCG Base (Lim Chu Kang).
21/2010	Reclamation at Ayer Chawan Basin, Jurong Island.
22/2010	Dredging works at East Keppel Fairway.
24/2010	Soil investigation works off Tuas View.
25/2010	Underwater drilling and blasting works at Pasir Panjang Fairway.
26/2010	Dredging operations at Loyang Way.
29/2010	Construction of International Cruise Terminal at Marina South.
34/2010	Construction of sea wall at Marina Wharf.
37/2010	Construction of Sentosa Boardwalk.
39/2010	Demolition of West Coast Ferry Terminal jetty.
40/2010	Sand Mining at Area 1 and Dumping at Pasir Pamjang Terminal Project Working Area.
41/2010	Dredging works off Pasir Panjang Terminal.

---

### III NAVIGATIONAL INFORMATION

\*(NM 43/2010)

#### **SINGAPOREAN PRINT-ON-DEMAND (POD) CHARTS**

**Print-On-Demand (POD)** Charts are the most up-to-date paper nautical charts printed for navigational use. These nautical charts are produced in accordance with the International Hydrographic Organisation (IHO) charting specifications. These official nautical charts are continually updated to the latest Notices to Mariners before they are printed and sold to users.

These POD Charts include SP1/GSP1, 200, 201, 202, 500, 501, 502 and 503.

#### **BENEFITS TO OUR CUSTOMERS**

##### **Convenience**

Customers need not make numerous hand corrections to the nautical charts before use. In addition the updated POD Charts are more accurate and reliable than offset printed charts with hand corrections.

##### **Clarity**

Clarity in the presentation of updated information as compared to lithographic printed charts, where in some cases there are several overlapping corrections over existing information.

##### **Coverage**

The POD Charts cover the Malacca and Singapore Straits, from One Fathom Bank to Horsburgh Lighthouse.

---

### III AMENDMENTS TO PUBLICATIONS

\*(NM 44/2010) UPDATING OF PUBLICATION “SINGAPORE PORT INFORMATION 2010/2011”

1. Page 142 – Item 4

Delete the following :

#### WHARVES AND BERTHS

#### MARINA WHARVES (1°16.4'N, 103°51.1'E)

Berth	Length of Berth	Depth Alongside (Year Surveyed)	Controlling Depth In Approaches
<b>M1</b>	120m	4.2m (1994)	4.2m
<b>M2</b>	120m	5.8m (1994)	5.6m
<b>M3</b>	120m	5.5m (1994)	5.6m
<b>M4</b>	120m	5.1m (1994)	5.6m
<b>M5</b>	85m	5.5m (1987)	5.6m
<b>M6</b>	45m	8.0m (2002)	6.9m

#### Berth              Height of Wharf Deck above Chart Datum

**M1 – M4**              4.12m

**M5**                      4.30m

DB Chart: 4037

Source: Port Marine Notice No. 34/2010



**IV**  
**REPRINT OF RADIO NAVIGATIONAL WARNINGS**

TT173

VESSELS IN EAST JOHOR STRAIT ARE ADVISED TO NAVIGATE WITH CAUTION WHEN NEAR THE PROJECT AREAS OFF PULAU TEKONG, PULAU SERANGOON, CHANGI AND MALANG PAPAN AS SHALLOW WATER AREAS EXIST. VESSELS ARE ADVISED TO KEEP LOOKOUT FOR TUGS AND BARGES NAVIGATING NEAR THE PROJECT AREAS AND PASSENGER FERRIES CROSSING BETWEEN CHANGI AND PULAU TEKONG AND VICINITY OF PASIR GUDANG.

TT619 (AMENDED ON 270430z)

DREDGER QUEEN OF PENTA OCEAN IS CONDUCTING DREDGING OPERATIONS IN POSITIONS BOUNDED BY COORDINATES:

01°15.827' N 103°57.737' E

01°14.865' N 103°58.134' E

01°13.298' N 103°54.401' E

01°13.884' N 103°54.131' E

VESSELS ARE ADVISED TO PROCEED AT SAFE SPEED AND TO GIVE A WIDE BERTH.

TT753

A SMALL WOODEN CARGO BOAT 10M IN LENGTH SUNK AT 01°15.73'N 103°32.1'E.

TT851 (AMENDED 080600UTC)

DREDGER "QUEEN OF PENTA OCEAN" WILL BE CARRYING OUT DREDGING OPERATIONS IN THE VICINITY OF SINGAPORE PORT LIMITS AND THE WESTBOUND LANE OF TSS OFF EASTERN PILOT BOARDING GROUND BRAVO PILOT STATION. VESSELS ARE TO KEEP A LOOKOUT AND GIVE A WIDE BERTH.

TT854

DANGER TO NAVIGATION

A VESSEL HAD SUNK IN POSITION 01°26.3'N 104°38.5'E. VESSELS ARE TO KEEP CLEAR.

SR154

THERE WAS A REPORT OF AN UNIDENTIFIED VESSEL SUNK SOUTHWEST OF HORSBURGH AT POSN 01°16.12'N 104°21.5'E. VESSELS IN THE VICINITY ARE ADVISED TO KEEP A LOOKOUT AND REPORT SIGHTING TO SPOCC.

ISSUED BY SINGAPORE PORT OPERATIONS CONTROL CENTRE

(as at 25<sup>th</sup> April 2010)

**V**  
**REPRINT OF ADMIRALTY NOTICES TO MARINERS**  
**FOR DUAL BADGED CHARTS**

These notices can be accessed directly from UKHO Website:

<http://www.ukho.gov.uk/ProductsandServices/MaritimeSafety/Pages/NMPublic.aspx>

**1590\* MALAYSIA – Peninsular Malaysia, East Coast – Johor – Malang Berendam – Light-beacon.**

Light List Vol. F, 2010/11, 1737.2

Source: Marine Department, Peninsular Malaysia Notice 12/10

**Chart 4042** [ *previous update 5076/09* ] WGS84 DATUM

Insert	 <b>Fl(2)6s19m7M</b>	1° 21' 48N., 104° 05' 35E.
--------	---	----------------------------

**Chart 4043** [ *previous update 1146/09* ] WGS84 DATUM

Insert	 <b>Fl(2)6s19m7M</b>	1° 21' 48N., 104° 05' 35E.
--------	---	----------------------------

**1634\* SINGAPORE – Pasir Panjang – Keppel Harbour and Dockyard Reach – Depths. Dredged depth. Works.**



**Buoyage. Legends. Cautionary notes. Foul.**

Source: Maritime and Port Authority of Singapore

**Chart 4037** [ *previous update 655/09* ] WGS84 DATUM

Insert	the accompanying block, showing amendments to depths and dredged depth, centred on:	1° 15' 910N., 103° 50' 560E.
	depth <del>19</del> <sub>9</sub> enclosed by 20m contour (a)	1° 15' 583N., 103° 51' 300E.
Delete	depth <del>20</del> <sub>7</sub> adjacent to:	(a) above

**Chart 4040** [ *previous update 1106/09* ] WGS84 DATUM

Insert	the accompanying block, showing amendments to the works, buoyage, legends and cautionary note, centred on:	1° 15' 85N., 103° 47' 40E.
Substitute	 <b>Fl.Y.10s TSS 5</b> for  <b>Fl.Y.10s TSS 5</b>	1° 15' 63N., 103° 45' 41E.

**Chart 4041** [ *previous update 1106/09* ] WGS84 DATUM

Insert	the accompanying block, showing amendments to the works and buoyage, centred on:	1° 15' 80N., 103° 47' 54E.
	the accompanying note, RECLAMATION WORKS IN PROGRESS, centred on:	1° 18' 46N., 103° 53' 90E.

**Chart 4044** [ *previous update 6003/09* ] WGS84 DATUM

Insert	 <b>Foul</b>	(a) 1° 28' 46N., 103° 48' 63E.
Delete	Depth <del>6</del> <sub>9</sub> close SW of:	(a) above

Updated to Admiralty Notices to Mariners Edition No. 17 of 2010 dated 29<sup>th</sup> April 2010.

chart, part  
contour. T

To be used only through prior arrangement with Port  
Operations Centre.

**RECLAMATION WORKS IN PROGRESS**  
(1°15'·8N 103°47'·2E)

Reclamation works are in progress in this area.  
The working area is marked by buoys. Mariners  
are advised to keep well clear. Depths within  
the working area will be shallower as the  
reclamation progresses. For further information  
consult the local authorities and see relevant  
Singaporean Port Marine Notices available at  
the MPA website: <http://www.mpa.gov.sg>.

**Works in progress (2009)**  
**Being reclaimed (2009)**  
(See Note)

**PASIR PANJANG FAIRWAY**

**Keppel Fairway**

**Marina@Keppel Bay**

**P. Keppel**

**CRUI**

**Rimau**

**FL.G.5s6m4M**

**FL.Y.4s TSS2**

**FL.Y.6s TSS3**

**Co S**

**FL.Y.2s PKH V9**

**FL.Y.2s PKH V7**

**FL.Y.2s PKH V6**

**FL.Y.2s PKH V10**

**FL.Y.2s PKH V11**

**FL.Y.2s PKH V1**

**FL.Y.2s PKH V2**

**FL.Y.2s PKH V4**

**FL.Y.2s PKH V5**

**FL.Y.2s PKH V3**

**FL.Y.2s PKH V8**

**FL.Y.2s PKH V12**

**FL.Y.2s PKH V13**

**FL.Y.2s PKH V14**

**FL.Y.2s PKH V15**

**FL.Y.2s PKH V16**

**FL.Y.2s PKH V17**

**FL.Y.2s PKH V18**

**FL.Y.2s PKH V19**

**FL.Y.2s PKH V20**

**FL.Y.2s PKH V21**

**FL.Y.2s PKH V22**

**FL.Y.2s PKH V23**

**FL.Y.2s PKH V24**

**FL.Y.2s PKH V25**

**FL.Y.2s PKH V26**

**FL.Y.2s PKH V27**

**FL.Y.2s PKH V28**

**FL.Y.2s PKH V29**

**FL.Y.2s PKH V30**

**FL.Y.2s PKH V31**

**FL.Y.2s PKH V32**

**FL.Y.2s PKH V33**

**FL.Y.2s PKH V34**

**FL.Y.2s PKH V35**

**FL.Y.2s PKH V36**

**FL.Y.2s PKH V37**

**FL.Y.2s PKH V38**

**FL.Y.2s PKH V39**

**FL.Y.2s PKH V40**

**FL.Y.2s PKH V41**

**FL.Y.2s PKH V42**

**FL.Y.2s PKH V43**

**FL.Y.2s PKH V44**

**FL.Y.2s PKH V45**

**FL.Y.2s PKH V46**

**FL.Y.2s PKH V47**

**FL.Y.2s PKH V48**

**FL.Y.2s PKH V49**

**FL.Y.2s PKH V50**

**FL.Y.2s PKH V51**

**FL.Y.2s PKH V52**

**FL.Y.2s PKH V53**

**FL.Y.2s PKH V54**

**FL.Y.2s PKH V55**

**FL.Y.2s PKH V56**

**FL.Y.2s PKH V57**

**FL.Y.2s PKH V58**

**FL.Y.2s PKH V59**

**FL.Y.2s PKH V60**

**FL.Y.2s PKH V61**

**FL.Y.2s PKH V62**

**FL.Y.2s PKH V63**

**FL.Y.2s PKH V64**

**FL.Y.2s PKH V65**

**FL.Y.2s PKH V66**

**FL.Y.2s PKH V67**

**FL.Y.2s PKH V68**

**FL.Y.2s PKH V69**

**FL.Y.2s PKH V70**

**FL.Y.2s PKH V71**

**FL.Y.2s PKH V72**

**FL.Y.2s PKH V73**

**FL.Y.2s PKH V74**

**FL.Y.2s PKH V75**

**FL.Y.2s PKH V76**

**FL.Y.2s PKH V77**

**FL.Y.2s PKH V78**

**FL.Y.2s PKH V79**

**FL.Y.2s PKH V80**

**FL.Y.2s PKH V81**

**FL.Y.2s PKH V82**

**FL.Y.2s PKH V83**

**FL.Y.2s PKH V84**

**FL.Y.2s PKH V85**

**FL.Y.2s PKH V86**

**FL.Y.2s PKH V87**

**FL.Y.2s PKH V88**

**FL.Y.2s PKH V89**

**FL.Y.2s PKH V90**

**FL.Y.2s PKH V91**

**FL.Y.2s PKH V92**

**FL.Y.2s PKH V93**

**FL.Y.2s PKH V94**

**FL.Y.2s PKH V95**

**FL.Y.2s PKH V96**

**FL.Y.2s PKH V97**

**FL.Y.2s PKH V98**

**FL.Y.2s PKH V99**

**FL.Y.2s PKH V100**

**FL.Y.2s PKH V101**

**FL.Y.2s PKH V102**

**FL.Y.2s PKH V103**

**FL.Y.2s PKH V104**

**FL.Y.2s PKH V105**

**FL.Y.2s PKH V106**

**FL.Y.2s PKH V107**

**FL.Y.2s PKH V108**

**FL.Y.2s PKH V109**

**FL.Y.2s PKH V110**

**FL.Y.2s PKH V111**

**FL.Y.2s PKH V112**

**FL.Y.2s PKH V113**

**FL.Y.2s PKH V114**

**FL.Y.2s PKH V115**

**FL.Y.2s PKH V116**

**FL.Y.2s PKH V117**

**FL.Y.2s PKH V118**

**FL.Y.2s PKH V119**

**FL.Y.2s PKH V120**

**FL.Y.2s PKH V121**

**FL.Y.2s PKH V122**

**FL.Y.2s PKH V123**

**FL.Y.2s PKH V124**

**FL.Y.2s PKH V125**

**FL.Y.2s PKH V126**

**FL.Y.2s PKH V127**

**FL.Y.2s PKH V128**

**FL.Y.2s PKH V129**

**FL.Y.2s PKH V130**

**FL.Y.2s PKH V131**

**FL.Y.2s PKH V132**

**FL.Y.2s PKH V133**

**FL.Y.2s PKH V134**

**FL.Y.2s PKH V135**

**FL.Y.2s PKH V136**

**FL.Y.2s PKH V137**

**FL.Y.2s PKH V138**

**FL.Y.2s PKH V139**

**FL.Y.2s PKH V140**

**FL.Y.2s PKH V141**

**FL.Y.2s PKH V142**

**FL.Y.2s PKH V143**

**FL.Y.2s PKH V144**

**FL.Y.2s PKH V145**

**FL.Y.2s PKH V146**

**FL.Y.2s PKH V147**

**FL.Y.2s PKH V148**

**FL.Y.2s PKH V149**

**FL.Y.2s PKH V150**

**FL.Y.2s PKH V151**

**FL.Y.2s PKH V152**

**FL.Y.2s PKH V153**

**FL.Y.2s PKH V154**

**FL.Y.2s PKH V155**

**FL.Y.2s PKH V156**

**FL.Y.2s PKH V157**

**FL.Y.2s PKH V158**

**FL.Y.2s PKH V159**

**FL.Y.2s PKH V160**

**FL.Y.2s PKH V161**

**FL.Y.2s PKH V162**

**FL.Y.2s PKH V163**

**FL.Y.2s PKH V164**

**FL.Y.2s PKH V165**

**FL.Y.2s PKH V166**

**FL.Y.2s PKH V167**

**FL.Y.2s PKH V168**

**FL.Y.2s PKH V169**

**FL.Y.2s PKH V170**

**FL.Y.2s PKH V171**

**FL.Y.2s PKH V172**

**FL.Y.2s PKH V173**

**FL.Y.2s PKH V174**

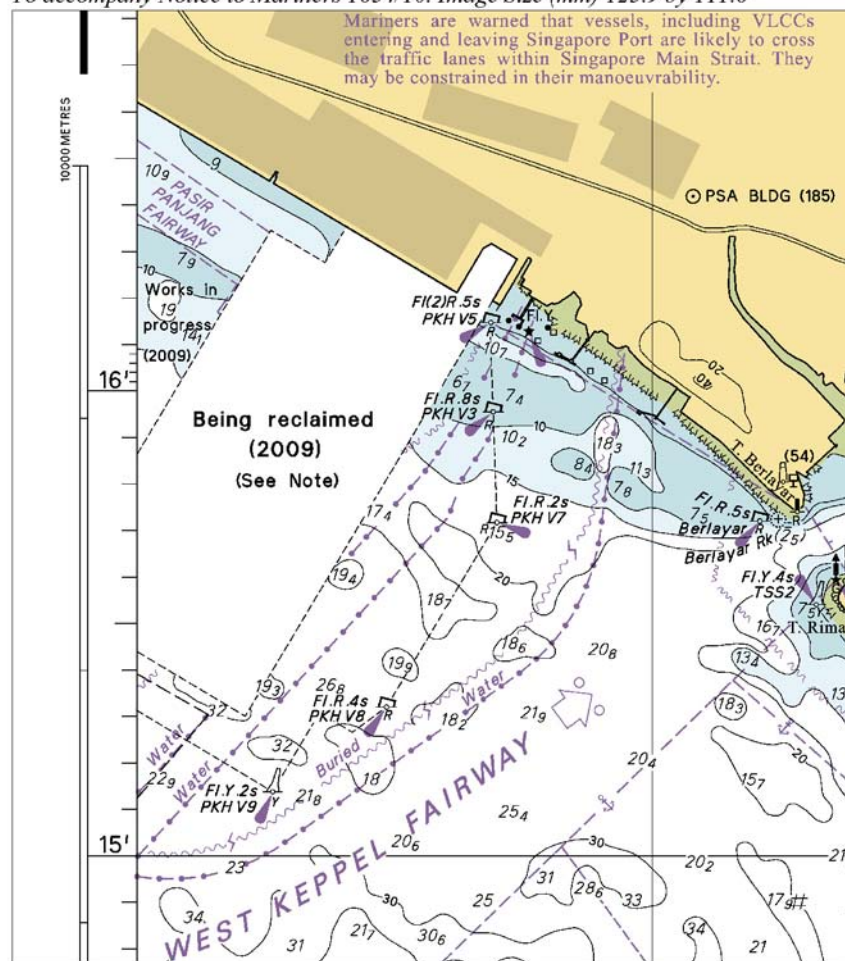
**FL.Y.2s PKH V175**

**FL.Y.2s PKH V176**

103

V  
**REPRINT OF ADMIRALTY NOTICES TO MARINERS  
 FOR DUAL BADGED CHARTS**

*To accompany Notice to Mariners 1634/10. Image Size (mm) 125.9 by 111.6*



Block for Chart No 4041

*To accompany Notice to Mariners 1634/10*

*On Chart 4041*

**RECLAMATION WORKS IN PROGRESS**

(1° 15' 8" N 103° 47' 2" E)

Reclamation works are in progress in this area. The working area is marked by buoys. Mariners are advised to keep well clear. Depths within the working area will be shallower as the reclamation progresses. For further information consult the local authorities and see the relevant Singaporean Port Marine Notices available at the MPA website: <http://www.mpa.gov.sg>.

**SINGAPORE ELECTRONIC NAVIGATIONAL CHARTS (ENC) DISTRIBUTORS**  
Please approach any of the appointed distributors to purchase the Singapore ENC.

DISTRIBUTOR	ADDRESS	TELEPHONE/FAX NO./EMAIL/WEBSITE
DPM (Singapore) Pte Ltd	1 Maritime Square, #09-72 HarbourFront Centre, Singapore 099253	Tel. No.: +65 6270 4060 Fax No.: +65 6276 3858 Email: sales@dpmsingapore.com.sg Website: http://www.dpmsingapore.com.sg
Kelvin Hughes(S) Pte Ltd	8 Pandan Avenue #02-00, Singapore 609384	Tel. No.: +65 6545 9880 ext.24 Fax No.: +65 6545 8892 Email: hamzah.akhbar@khsing.com Website: http://www.kelvinhughes.co.uk
Maritime Information Systems (MARIS)	52, Telok Blangah Road #01-06, Telok Blangah Centre, Singapore 058809	Tel. No.: +65 6276 1472 Fax No.: +65 6276 1473 Email: support@maris.sg Website: http://www.maris.no
Maritime Information System AS (MARIS)	Danholmen 25, 3128 Notteroy, Norway	Tel. No.: +47 33 30 42 50 Fax No.: +47 33 30 42 51 Email: roar.moe@maris.no Website: http://www.maris.no
Motion Smith	15 Jalan Kilang Barat #08-01/05 Frontech Centre Singapore 159357	Tel. No.: +65 6220 5098 Fax No.: +65 6225 4902 Email: sales@motsmith.com Website: http://www.motsmith.com
Transas Marine Pacific Pte Ltd	750C Chai Chee Road, #04-07, Technopark@Chai Chee, Singapore 469003	Tel. No.: +65 6443 3061 Fax No.: +65 6443 3025 Email: dominic@transas.com.sg Website: http://www.transas.com.sg
Vector Services Pte Ltd	15 West Coast Highway, #02-14A Pasir Panjang Building Singapore 117861	Tel. No.: +65 6777 3602 Fax No.: +65 6777 9203 Email: kwchoy@pacific.net.sg
Marine Press of Canada	640 Rue St-Paul Ouest, Suite 300 Montreal (QC) Canada, H3C1L9	Tel. No.: (514) 866 8342 Fax No.: (514) 866 9050 Email : sales@marinepress.com Website: http://www.marinepress.com
HanseNautic GmbH Bade & Hornig, Eckardt & Messtorff	Herrengarten 31 D-20459 Hamburg, Germany	Tel. No.: +49 40 374 811-32 Fax No.: +49 40 366 400 Email: wilde@hansenautic.de Website : http://www.HanseNautic.com
ChartWorld GmbH	Ruhrstrasse 90, D-22761 Hamburg, Germany	Tel. No.: +49 40 853 58 6940 Fax No.: +49 40 853 58 6949 Email: sales@chartworld.com Website : http://www.sevencs.com
Japan Hydrographic Association Electronic Charts Division	Daiichi Sogo Bldg, 6F 1-6-6, Hanedakuko, Ota-ku, Tokyo 144-0041, Japan	Tel. No.: +81 3 5708 7093 Fax No.: +81 3 5708 7094 Email: enc-support@jha.jp Website: http://www.jha.jp



**SINGAPORE ELECTRONIC NAVIGATIONAL CHARTS (ENC) DISTRIBUTORS**  
Please approach any of the appointed distributors to purchase the Singapore ENC.

DISTRIBUTOR	ADDRESS	TELEPHONE/FAX NO./EMAIL/WEBSITE
E_MLX Co. Ltd	Ssangyong Research No.2 Lab Sinseong-Dong 100 Yusong-Gu, Daejeon 305-804, Korea (ROK)	Tel. No.: +82 42 865 1893 Fax No.: +82 42 865 1884 Email: Jester-kim@emlx.co.kr
Korean Ocean Development Co. Ltd	2ND Fl, Dongbang Bldg, 25-4, 4 Ga Jungang-Dong, Jung-Gu, Busan, South Korea	Tel. No.: +82 514 66 0760 Fax No.: +82 514 65 9345 Email: sales@chartkorea.com Website: <a href="http://www.chartkorea.com">http://www.chartkorea.com</a>
Jeppesen Norway A/S	P.O Box 212 , N-4379 Egersund, Norway	Tel No.: +47 514 64 700 Fax No: +47 514 64 701 Email: enc@c-map.no Website : <a href="http://www.c-map.no">http://www.c-map.no</a>
PRIMAR STAVANGER	Lervigsveien 36, P.O Box 60, N-4001 Stavanger, Norway	Tel. No.: +47 51 93 9500 Fax No.: +47 51 93 9501 Email: sales@primar.org Website : <a href="http://www.primar-stavanger.org">http://www.primar-stavanger.org</a>
United Kingdom Hydrographic Office	Admiralty Way, Taunton, Somerset TA1 2DN United Kingdom	Tel. No.: +44 (0)1823 337900 Fax No.: +44 (0)1823 284077 Emails: vargroup@ukho.gov.uk & christine.trickett@ukho.gov.uk Website: <a href="http://www.ukho.gov.uk">http://www.ukho.gov.uk</a>

### Agents for the Maritime and Port Authority of Singapore Nautical Charts and Publications

**Agent's Name** : **DPM (Singapore) Pte Ltd**  
**Address** : 1 Maritime Square #09-72, HarbourFront Centre,  
Singapore 099253  
**Telephone** : (65) 6270 4060  
**Fax No.** : (65) 6276 3858  
**E-mail** : sales@dpmsingapore.com.sg  
**Internet Web Site** : <http://www.dpmsingapore.com.sg>

**Agent's Name** : **E.W. Liner Charts & Publications Pte Ltd**  
**Address** : 102F, Pasir Panjang Road, #08-01, Citilink Warehouse Complex,  
Singapore 118530  
**Telephone** : (65) 6323 0773  
**Fax No.** : (65) 6323 0775  
**E-mail** : ewliner@singnet.com.sg  
**Internet Web Site** : <http://www.ewliner.com>

**Agent's Name** : **Motion Smith**  
**Address** : 15 Jalan Kilang Barat  
#08-01/05 Frontech Centre,  
Singapore 159357  
**Telephone** : (65) 6220 5098  
: (After office hours: 8163 9993)  
**Fax No.** : (65) 6225 4902  
**E-mail** : sales@motsmith.com  
**Internet Web Site** : <http://www.motsmith.com>



## **HYDROGRAPHIC NOTE - Instructions**

1. Mariners are requested to notify the Chief Hydrographer, Maritime and Port Authority of Singapore, when new or suspected dangers to navigation are discovered, changes are observed in aids to navigation or where corrections to nautical publications may be necessary. Reports, which cannot be confirmed or are lacking in certain details should not be withheld.
2. Any ambiguities of time, positioning and depth should be stressed and any firm expectation of being able to check the information provided on a following voyage should be mentioned.
3. Mariners using satellite position fixing systems, eg. GPS, should provide details of equipment and datum used (where applicable). Where bearings (true or magnetic) are taken visually or by radar to fix a position, it should include more than two objects in order to provide a check on its accuracy. A position may also be defined by bearing and distance from a conspicuous object eg. beacon, lighthouse etc.
4. The note should include a tracing or a digital image of the chart used and the details should be clearly marked.
5. Echo sounders frequently register greater depths than the advertised maximum depth for the equipment, eg. a trace appearing at 50 metres may be in fact be 550 metres or even 1050 metres for equipment whose maximum depth is 500 metres. Erroneous depths caused by 2nd transmission error can usually be recognised by the following:
  - (a) the tracing being weaker than normal for the depth registered,
  - (b) the trace appearing to pass through the transmission line,
  - (c) the feathery nature of the trace.
6. An acknowledgement of receipt will be sent. When a Notice to Mariners is issued, the sender's vessel or name is quoted as the source unless the same information is also received in foreign Notices to Mariners.
7. Reports of shoals, uncharted dangers and defects in aids to navigation may also be made to the appropriate Singapore Port Operations Control Centre on VHF Channels 10, 12, 14, 68 or 73.

## HYDROGRAPHIC NOTE

To:

Chief Hydrographer  
Hydrographic Department  
Maritime and Port Authority of Singapore  
460 Alexandra Road PSA Building #20-00  
Singapore 119963

Tel : (65) 6375 1227  
Fax : (65) 6278 7646  
Email : [hydrographic@mpa.gov.sg](mailto:hydrographic@mpa.gov.sg)

**Sender's Contact Details** :

Date : .....

Name of Vessel : .....

Address of Sender : .....

Tel : ..... Fax : .....

Email : .....

**Nature of Observation** :

General Location : .....

Subject : .....

Position : Lat. .... Long. ....

Charts Used : .....

Date & Time of Observation : .....

Details : .....

.....

.....

Attachment : .....

**Equipment Used** :

Type of Position Fixing : GPS / DGPS Others : .....

Type of Echo Sounder : .....

Name and Signature : .....

Ship's/Company's stamp : .....