



SINGAPOREAN NOTICES TO MARINERS

SECTION	CONTENT	Page
I	Index of Charts & Publications	1
II	New Publications	6
	Notices to Mariners and Chart Corrections	14
	Temporary and Preliminary Notices	15
III	Navigational Information	19
	Amendments to Publications	20
IV	Reprint of Radio Navigational Warnings	21
V	Extract of Admiralty Notices to Mariners for Dual Badged Charts	22

The monthly Notices to Mariners contain corrective information affecting charts published by the Hydrographic Department, Maritime and Port Authority of Singapore. The information contained in these Notices should be updated on the charts affected. Notices under Section II apply only to the particular Singaporean Chart(s) indicated.

Mariners are requested to notify the Chief Hydrographer, Maritime and Port Authority of Singapore, immediately on the discovery of new dangers or suspected dangers to navigation and of changes or defects in aids to navigation. See Hydrographic Note on back page.

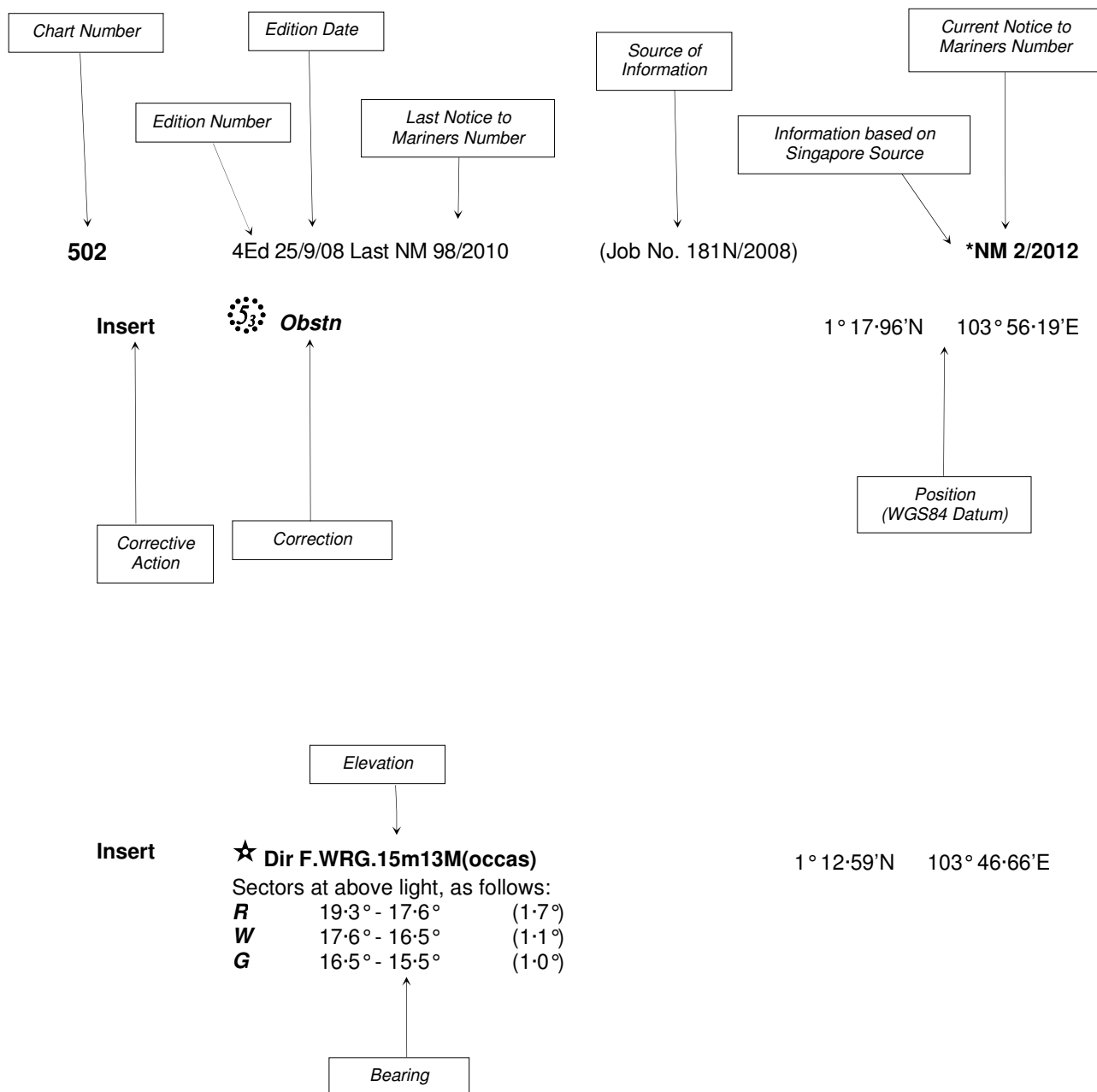
The monthly Singaporean Notices to Mariners can be accessed directly from the MPA website:
[http://www.mpa.gov.sg/sites/port_and_shipping/circulars_and_notices/singapore_notices_to_mariners\(ntm\).page](http://www.mpa.gov.sg/sites/port_and_shipping/circulars_and_notices/singapore_notices_to_mariners(ntm).page)

This service is offered free of charge.

Hydrographic Department
Maritime and Port Authority of Singapore
460 Alexandra Road
PSA Building #20-00
Singapore 119963
Tel: (65) 6375 1227
Fax: (65) 6278 7646

EXPLANATION OF FORMAT

The elements of a typical chart correction are explained below.



Notes:

- a) Notice to Mariners number followed by:
T indicates a Temporary Notice (eg. ***NM 3T/2012**).
P indicates a Preliminary Notice (eg. ***NM 4P/2012**).
- b) Bearings are true reckoned clockwise from 000° to 359°; those relating to lights are from seaward.
- c) Heights and elevations are above Mean High Water Springs.

I
INDEX OF CHARTS AND PUBLICATIONS

INDEX OF AFFECTED CHARTS

DESCRIPTION	NOTICE NO.	PAGE NO.
Index of Singaporean Charts	-	3
Index of Dual Badged Charts	-	4
Index of Singapore Electronic Navigational Chart (ENC)	-	5
Singapore Port Information 2012/2013	-	6
New Edition Singaporean Charts	-	7, 8
New Edition Dual Badged Charts	-	9 to 13
Singaporean Chart 200	43	14
Singaporean Chart 201	44, 45	14
Temporary and Preliminary Notices	*46T, 47T, 48T, 49T,	15 to 18
Port Marine Notices	*50	19
Singaporean Print-On-Demand (POD) Charts	*51	19
Amendments to Publications	-	20
Reprint of Radio Navigational Warnings	-	21
Extract of Admiralty Notices to Mariners for Dual Badged Charts	-	22 to 25
Singapore Electronic Navigational Chart (ENC) Distributors	-	26
Chart Agents for the Maritime and Port Authority of Singapore Nautical Charts and Publications	-	27

*Denotes information are based on Singaporean source.

I
INDEX OF CHARTS AND PUBLICATIONS

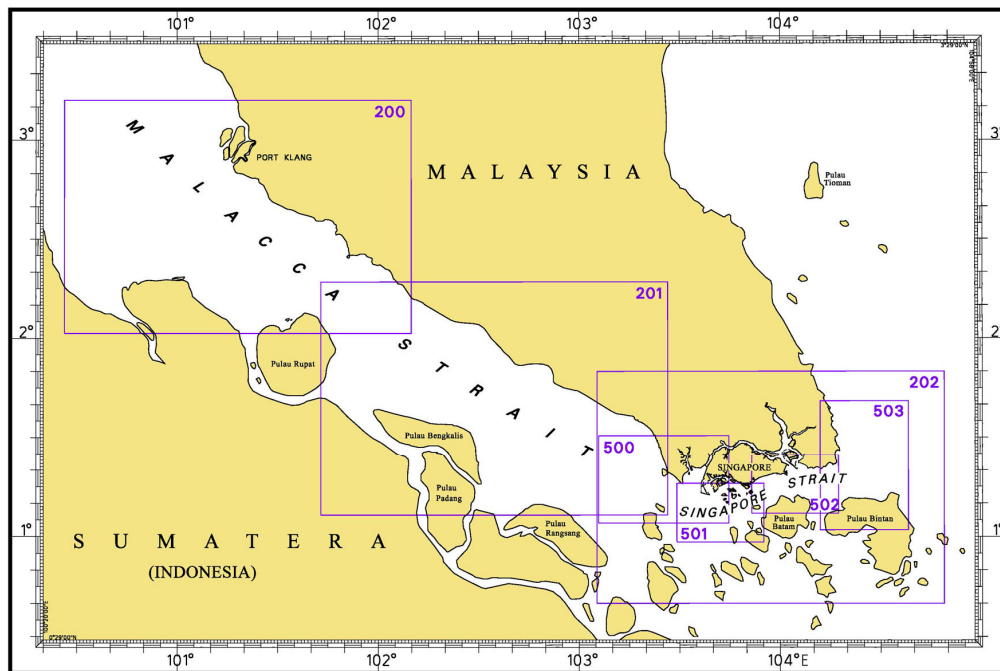
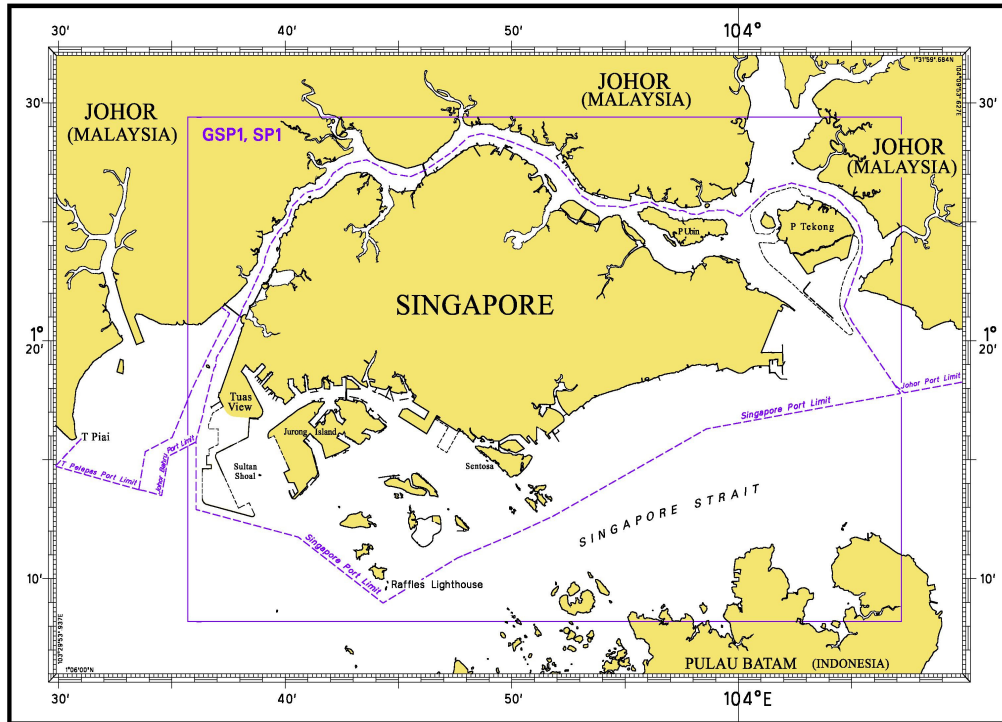
INDEX OF NOTICES

NOTICE NO.	DESCRIPTION	PAGE NO.
-	Index of Singaporean Charts	3
-	Index of Dual Badged Charts	4
-	Index of Singapore Electronic Navigational Chart (ENC)	5
-	Singapore Port Information 2012/2013	6
-	New Edition Singaporean Charts	7, 8
-	New Edition Dual Badged Charts	9 to 13
43	Singaporean Chart 200	14
44, 45	Singaporean Chart 201	14
*46T, 47T, 48T 49T	Temporary and Preliminary Notices	15 to 18
*50	Port Marine Notices	19
*51	Singaporean Print-On-Demand (POD) Charts	19
-	Amendments to Publications	21
-	Reprint of Radio Navigational Warnings	27
-	Extract of Admiralty Notices to Mariners for Dual Badged Charts	22 to 25
-	Singapore Electronic Navigational Chart (ENC) Distributors	26
-	Chart Agents for the Maritime and Port Authority of Singapore Nautical Charts and Publications	27

* Denotes information are based on Singaporean source.

I INDEX OF CHARTS AND PUBLICATIONS

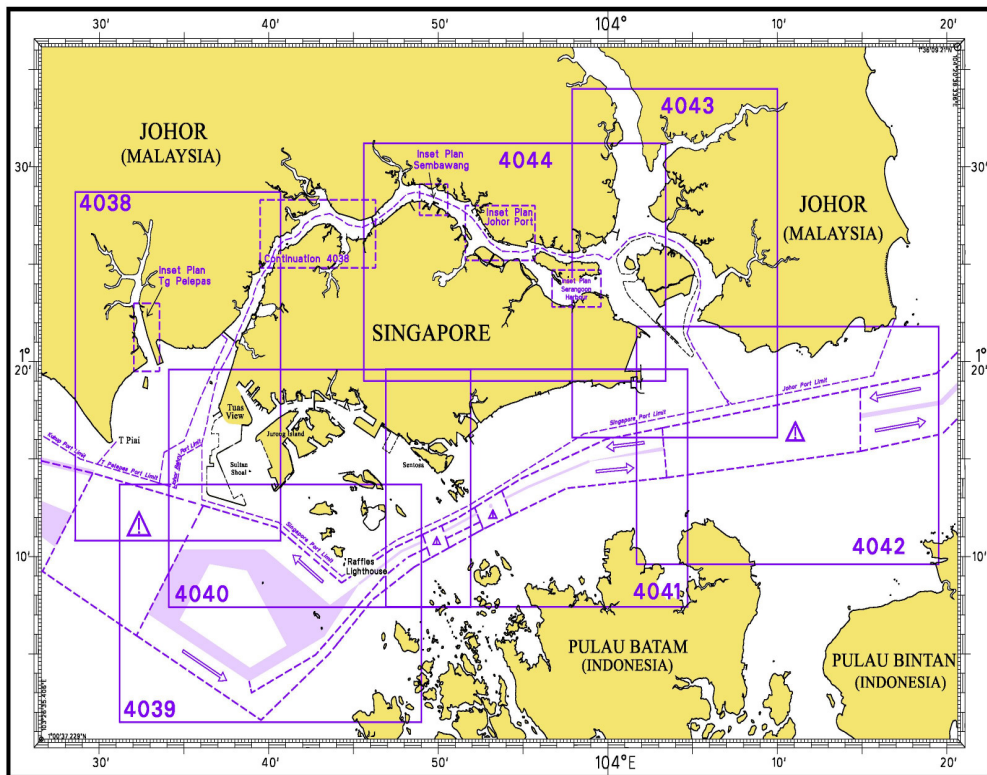
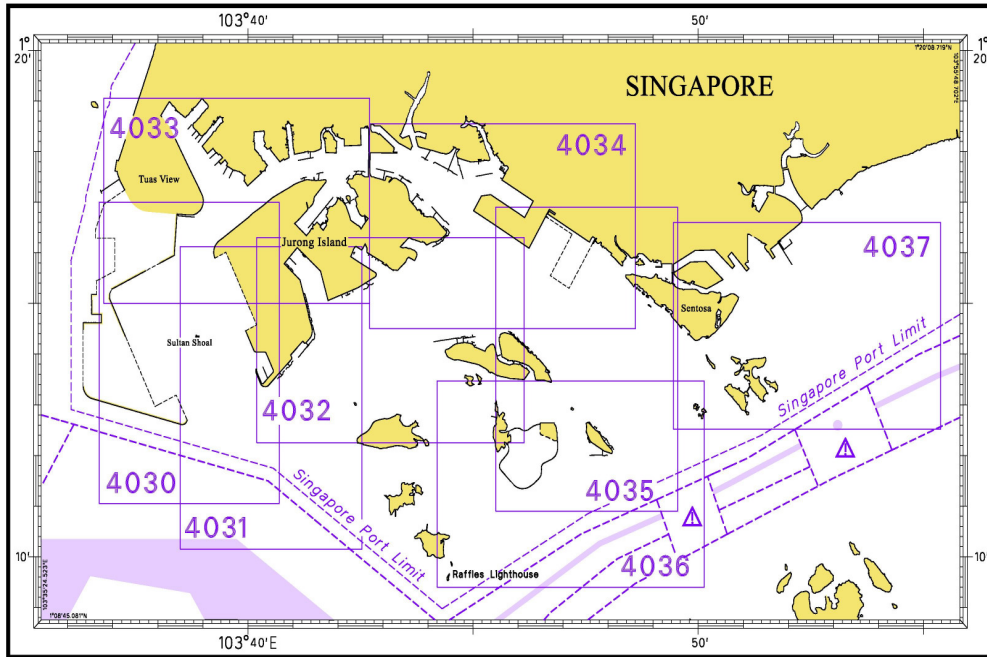
INDEX OF SINGAPOREAN CHARTS



Notes:
Updated SINGAPOREAN Charts are available through our Print-On-Demand (POD) Chart Service. For more information, refer to Section III – Navigational Information. These charts can be purchased from our authorised Chart Agents.

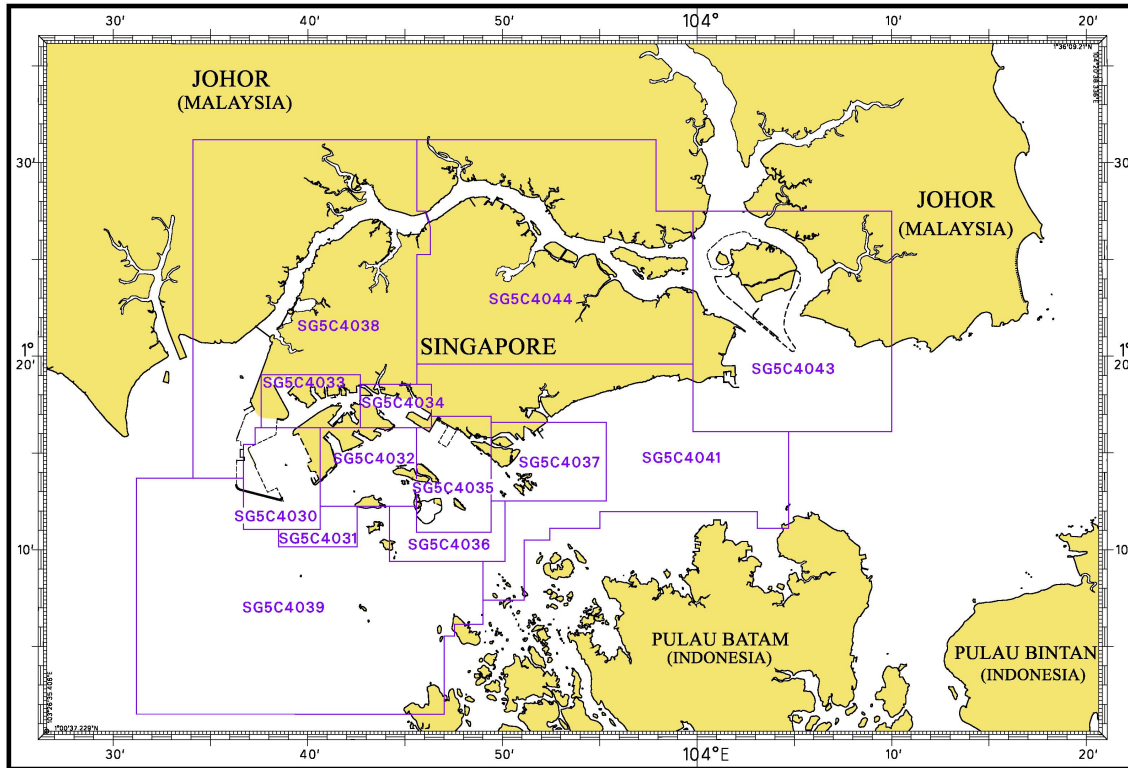
I INDEX OF CHARTS AND PUBLICATIONS

INDEX OF DUAL BADGED CHARTS



I INDEX OF CHARTS AND PUBLICATIONS

INDEX OF SINGAPORE ELECTRONIC NAVIGATIONAL CHART (ENC)



COVERAGE OF SINGAPORE ELECTRONIC NAVIGATIONAL CHART (ENC)

ENC Name	ENC Coverage	ENC Edition
SG5C4030	West Jurong Anchorages and Temasek Fairway	5 th Edition (3/05/2012)
SG5C4031	Western Approaches to Jurong Island	5 th Edition (3/05/2012)
SG5C4032	Sinki Fairway	7 th Edition (3/05/2012)
SG5C4033	Tuas Bay, West Jurong Channel and Pesek Basin	5 th Edition (3/05/2012)
SG5C4034	East Jurong Channel, Pasir Panjang Terminal and West Keppel Fairway	10 th Edition (3/05/2012)
SG5C4035	Western Anchorages, Jong Fairway and Cruise Bay	11 th Edition (3/05/2012)
SG5C4036	Raffles Lighthouse to The Sisters	6 th Edition (3/05/2012)
SG5C4037	Keppel Harbour, Tanjong Pagar Terminal and Approaches	6 th Edition (3/05/2012)
SG5C4038	Johor Strait – Western Part	5 th Edition (3/05/2012)
SG5C4039	Western Approaches to Main Strait	5 th Edition (3/05/2012)
SG5C4041	Pulau Sebarok to Changi	6 th Edition (3/05/2012)
SG5C4043	Kuala Johor and Sungai Johor	7 th Edition (3/05/2012)
SG5C4044	Johor Strait – Eastern Part	7 th Edition (3/05/2012)

II NEW PUBLICATIONS

NEW EDITION SINGAPORE PORT INFORMATION 2012/2013 TO BE PUBLISHED IN MAY 2012.

Summary of Publication

This publication contains Port Information such as:

1. Routeing and Reporting Information

- a) Straits of Malacca and Singapore – Routeing System.
- b) Mandatory Ship Reporting In the Straits of Malacca and Singapore – Straitrep.
- c) Rules for vessels navigating during hours of darkness through the Straits of Malacca and Singapore.
- d) Revised reporting procedures for notification and confirmation of a vessel's arrival in Singapore
- e) Amendment to reporting procedures for vessels manoeuvring in port.
- f) Guide to VHF communication in port and Singapore Strait
- g) VHF Radio Telephone reporting Procedures for vessel manoeuvring within the Traffic Information Area in the East Johor Strait.
- h) Tall vessels' movements in the port waters surrounding Changi Airport.
- i) Height Restricted Areas in port.

2. Pilotage and Pilotage Exemption Information

3. Port Clearances and Reporting

- a) Port health clearance procedures for vessels arriving in Singapore.
- b) Port clearance formalities for arriving and departing vessels.
- c) Reporting of Marine incidents in port.
- d) Dissemination of passage plan to shipmasters.
- e) Conduct of mandatory Port Limit courses.
- f) Facilities for the collection of garbage from ships in Singapore.

4. Navigational Information

- a) Anchorages and fairways in the port.
- b) The use of canoes and kayaks within the port limits of Singapore.
- c) Depths of Navigational channels and fairways.
- d) Depths of rivers and Basins.

5. Information on Aids to Navigation

- a) IALA Maritime Buoyage System
- b) Characteristics of Aids to Navigation – List of beacons, buoys and lighthouses.

6. Communication – International Code of Signals

7. Nautical Services and Products

- a) Index and chart catalogue of Singaporean charts.
- b) Index and chart catalogue of Dual Badged charts.
- c) Agents for Maritime and Port Authority of Singapore publications.
- d) Singapore Electronic Navigational Charts (ENC) Catalogue and Electronic Navigational Charts Distributors.

To Whom Will It Be Useful?

Mariners, shipping community, port users and other interested users.

Frequency / Year of Publication

Once every 2 years.

This publication would be available from the following Chart Agents:

- 1) DPM (Singapore) Pte Ltd
- 2) E.W. Liner Charts & Publications Pte Ltd
- 3) Motion Smith

II NEW PUBLICATIONS

Amendments to anchorages and fairways affecting the following publications:
(It will be implemented from 0000 HOURS UT, 1st June 2012)

**NEW EDITION SINGAPOREAN CHARTS TO BE PUBLISHED ON 3RD MAY 2012
(THESE CHARTS SHOW CHANGES TO ANCHORAGES AND FAIRWAYS WHICH
COME INTO EFFECT 0000 HOURS UT, 1ST JUNE 2012)**

Chart Number : GSP1
Title : Anchorages and Aids to Navigation (with area reference)
Coverage : Lat 01°08'20"N 01°29'40"N
 Long 103°35'70"E 103°07'20"E
Scale : 1: 60 000
Date Published : 3rd May 2012
Size of Chart : 973.9 x 651.2 mm
Description of changes : This new edition includes :

- Revised anchorages and fairways
- Revised Height Restricted Area
- New submarine cables
- Marina Bay Cruise Centre
- Reclamation at Ayer Merbau (Jurong Island)
- New depth contours covering:-
 - i. East Jurong Channel
 - ii. Around Pulau Tekong
 - iii. West Bound Lane of the TSS South of Eastern Anchorages
 - iv. Jong Fairway
 - v. East Keppel Fairway

This new edition supersedes the earlier edition published on 27th January 2011.

Chart Number : SP1
Title : Anchorages and Aids to Navigation
Coverage : Lat 01°08'20"N 01°29'40"N
 Long 103°35'70"E 103°07'20"E
Scale : 1: 60 000
Date Published : 3rd May 2012
Size of Chart : 973.9 x 651.2 mm
Description of changes : This new edition includes :

- Revised anchorages and fairways
- Revised Height Restricted Area
- New submarine cables
- Marina Bay Cruise Centre
- Reclamation at Ayer Merbau (Jurong Island)
- New depth contours covering:-
 - i. East Jurong Channel
 - ii. Around Pulau Tekong
 - iii. West Bound Lane of the TSS South of Eastern Anchorages
 - iv. Jong Fairway
 - v. East Keppel Fairway

This new edition supersedes the earlier edition published on 27th January 2011.

II NEW PUBLICATIONS

NEW EDITION SINGAPOREAN CHARTS TO BE PUBLISHED ON 3RD MAY 2012 (THESE CHARTS SHOW CHANGES TO ANCHORAGES AND FAIRWAYS WHICH COME INTO EFFECT 0000 HOURS UT, 1ST JUNE 2012)

Chart Number	:	501
Title	:	Singapore Strait – Western Part
Coverage	:	Lat 0°58'36"N 0°16'00"N Long 103°29'17"E 103°55'05"E
Scale	:	1: 50 000
Date Published	:	3 rd May 2012
Size of Chart	:	960.0 x 649.9 mm
Description of changes	:	This new edition includes : <ul style="list-style-type: none"> • Revised anchorages and fairways • New submarine cables • New coastline of Jurong Island • Updated surveys covering Dual Badged Charts 4039, 4040 and 4041 which would be published on 3rd May 2012.

This new edition supersedes the earlier edition published on 24th Sep 2009.

Chart Number	:	502
Title	:	Singapore Strait – Eastern Part
Coverage	:	Lat 01°07'00"N 01°24'61"N Long 103°51'43"E 104°17'31"E
Scale	:	1: 50 000
Date Published	:	3 rd May 2012
Size of Chart	:	960.0 x 649.2 mm
Description of changes	:	This new edition includes : <ul style="list-style-type: none"> • Revised anchorages and fairways • Revised Height Restricted Area • Marina Bay Cruise Centre • Updated surveys covering Dual Badged Chart 4041, which would be published on 3rd May 2012. • New submarine cables and topographic details

This new edition supersedes the earlier edition published on 22nd Sep 2011.

NEW EDITIONS OF THE SINGAPORE ELECTRONIC NAVIGATIONAL CHARTS (ENC) (RELEASE 2012) TO BE RELEASED ON 3RD MAY 2012

For more information:

Please contact Ms Jenny Goh/Carrie Ang at Tel: 6375 1575/1557 or visit our website:

[http://www.mpa.gov.sg/sites/port_and_shipping/port/charts_tidal_information_and_hydrography/charts/Singapore_electronic_navigational_chart\(enc\).page](http://www.mpa.gov.sg/sites/port_and_shipping/port/charts_tidal_information_and_hydrography/charts/Singapore_electronic_navigational_chart(enc).page)

II NEW PUBLICATIONS

Amendments to anchorages and fairways affecting the following publications:
(It will be implemented from 0000 HOURS UT, 1st June 2012)

**NEW EDITION DUAL BADGED CHARTS TO BE PUBLISHED ON 3RD MAY 2012
(THESE CHARTS SHOW CHANGES TO ANCHORAGES AND FAIRWAYS WHICH
COME INTO EFFECT 0000 HOURS UT, 1ST JUNE 2012)**

Chart Number	:	4030
Title	:	Port of Singapore West Jurong Anchorages and Temasek Fairway
Coverage	:	Lat 01°11·05'N 01°17·00'N Long 103°36·70'E 103°40·70'E
Scale	:	1: 10 000
Date Published	:	3 rd May 2012
Size of Chart	:	742.0 x 1096.5 mm
Description of changes	:	a) Updated survey data covering these areas : <ul style="list-style-type: none"> • Temasek Fairway • West Jurong Anchorages • West Jurong Channel • Sudong Holding Anchorage • Area surrounding the Tuas View Extension <p>b) Amendment of West Jurong Anchorage</p> <p>c) Deletion of Tuas Petroleum Holding Anchorage</p>

The existing chart of the same number published on 25th March 2010 will be superseded.

Chart Number	:	4031
Title	:	Port of Singapore Western Approaches to Jurong Island
Coverage	:	Lat 01°10·15'N 01°16·12'N Long 103°38·50'E 103°42·53'E
Scale	:	1: 10 000
Date Published	:	3 rd May 2012
Size of Chart	:	747.5 x 1100.2 mm
Description of changes	:	a) Updated survey data covering these areas : <ul style="list-style-type: none"> • Temasek Fairway • Sudong Anchorages • Banyan Basin • Approaches to Sinki Fairway <p>b) Amendment of West Jurong Anchorage</p>

The existing chart of the same number published on 25th March 2010 will be superseded.

II NEW PUBLICATIONS

NEW EDITION DUAL BADGED CHARTS TO BE PUBLISHED ON 3RD MAY 2012 (THESE CHARTS SHOW CHANGES TO ANCHORAGES AND FAIRWAYS WHICH COME INTO EFFECT 0000 HOURS UT, 1ST JUNE 2012)

Chart Number	:	4032
Title	:	Port of Singapore Sinki Fairway
Coverage	:	Lat 01°12'25"N 01°16'30"N Long 103°40'20"E 103°46'13"E
Scale	:	1: 10 000
Date Published	:	3 rd May 2012
Size of Chart	:	1100.0 x 746.4 mm
Description of changes	:	a) Updated survey data covering these areas : <ul style="list-style-type: none"> • Portion of Banyan Basin • Sakra Basin • East Jurong Channel • South of Pulau Ular • Selat Sinki <p>b) Amendment of Selat Pauh Anchorage</p> <p>c) Insertion of Selat Pauh Petroleum Anchorage</p>

The existing chart of the same number published on 4th March 2010 will be superseded.

Chart Number	:	4033
Title	:	Port of Singapore Tuas Bay, West Jurong Channel and Pesek Basin
Coverage	:	Lat 01°15'00"N 01°19'05"N Long 103°36'80"E 103°42'70"E
Scale	:	1: 10 000
Date Published	:	3 rd May 2012
Size of Chart	:	1094.4 x 746.4 mm
Description of changes	:	a) Updated survey data covering these areas : <ul style="list-style-type: none"> • Temasek Fairway • Portion of West Jurong Channel • Tanjong Kling Basin • East Samulun Basin • West Samulun Basin • Pesek Basin • Northern Tuas Basin <p>b) Amendment of West Jurong Anchorage</p> <p>c) Deletion of Tuas Petroleum Holding Anchorage</p>

The existing chart of the same number published on 4th March 2010 will be superseded.

II NEW PUBLICATIONS

**NEW EDITION DUAL BADGED CHARTS TO BE PUBLISHED ON 3RD MAY 2012
(THIS CHART SHOWS CHANGES TO ANCHORAGES AND FAIRWAYS WHICH
COME INTO EFFECT 0000 HOURS UT, 1ST JUNE 2012)**

Chart Number	:	4039
Title	:	Western Approaches to Main Strait
Coverage	:	Lat 01°01'50"N 01°13'70"N Long 103°31'20"E 103°49'00"E
Scale	:	1: 30 000
Date Published	:	3 rd May 2012
Size of Chart	:	1100.7 x 749.5 mm
Description of changes	:	a) Updated survey data covering these areas : <ul style="list-style-type: none">• South of Tuas View Extension• Shell SBM Area• Jong Fairway• Sudong Anchorages• Selat Pauh Anchorage• Sinki Fairway
		b) Amendment of the following anchorages: <ul style="list-style-type: none">• Selat Pauh Anchorage• Raffles Reserved Anchorage
		c) Insertion of the following anchorages: <ul style="list-style-type: none">• Raffles Petroleum Anchorage• Sudong Petroleum Holding Anchorage• Selat Pauh Petroleum Anchorage

The existing chart of the same number published on 11th August 2011 will be superseded.

II NEW PUBLICATIONS

NEW EDITION DUAL BADGED CHARTS TO BE PUBLISHED ON 3RD MAY 2012 (THIS CHART SHOWS CHANGES TO ANCHORAGES AND FAIRWAYS WHICH COME INTO EFFECT 0000 HOURS UT, 1ST JUNE 2012)

Chart Number	:	4040
Title	:	Singapore, Indonesia and Malaysia Tuas View to Pulau Sakijang Bendera (S. John's Island)
Coverage	:	Lat 01°07'40"N 01°19'60"N Long 103°34'10"E 103°51'90"E
Scale	:	1: 30 000
Date Published	:	3 rd May 2012
Size of Chart	:	1100.6 x 749.5 mm
Description of changes	:	<p>a) Updated survey data covering these areas :</p> <ul style="list-style-type: none"> • Area surrounding the Tuas View Extension • West and East Jurong Channel • Portion of Temasek Fairway • Portion of East Jurong Channel • Approaches to Tanjong Pagar Terminal <p>b) Amendment of the following fairways and anchorages:</p> <ul style="list-style-type: none"> • West Keppel Fairway • East Keppel Fairway • West Jurong Anchorage • Selat Pauh Anchorage • Raffles Reserved Anchorage <p>c) Deletion of the following fairway and anchorage:</p> <ul style="list-style-type: none"> • Pasir Panjang Fairway • Tuas Petroleum Holding Anchorage <p>d) Insertion of the following anchorages:</p> <ul style="list-style-type: none"> • Sudong Petroleum Holding Anchorage • Selat Pauh Petroleum Anchorage • Raffles Petroleum Anchorage

The existing chart of the same number published on 11th August 2011 will be superseded.

II NEW PUBLICATIONS

NEW EDITION DUAL BADGED CHARTS TO BE PUBLISHED ON 3RD MAY 2012 (THIS CHART SHOWS CHANGES TO ANCHORAGES AND FAIRWAYS WHICH COME INTO EFFECT 0000 HOURS UT, 1ST JUNE 2012)

Chart Number	:	4041
Title	:	Singapore and Indonesia Pulau Sebarok to Changi
Coverage	:	Lat 01°07'40"N 01°19'60"N Long 103°46'90"E 103°04'70"E
Scale	:	1: 30 000
Date Published	:	3 rd May 2012
Size of Chart	:	1100.6 x 749.5 mm
Description of changes	:	<p>a) Updated survey data covering these areas :</p> <ul style="list-style-type: none"> • West Bound Lane of the Traffic Separation Scheme • Portion of East Keppel Fairway • Approaches to Tanjong Pagar Terminal • Marina Bay Cruise Centre <p>b) Amendment of the following fairway and anchorages:</p> <ul style="list-style-type: none"> • East Keppel Fairway • Eastern Petroleum B Anchorage • Eastern Special Purposes A Anchorage • Eastern Bunkering C Anchorage <p>c) Deletion of the following anchorages:</p> <ul style="list-style-type: none"> • Explosives Anchorage • Eastern Special Purposes D Anchorage • Eastern Special Purposes B Anchorage • Small Craft Anchorage • Laid-up Vessels Anchorage <p>d) Insertion of the following anchorages:</p> <ul style="list-style-type: none"> • Small Craft A Anchorage • Small Craft B Anchorage • Eastern Petroleum C Anchorage <p>e) Renaming of Corridor to Eastern Corridor</p> <p>f) Height Restricted Areas:</p> <ul style="list-style-type: none"> • Amendment of Height Restricted Area for all vessels over 15 metres high. • Insertion of Height Restricted Area for all vessels over 30 metres high.

The existing chart of the same number published on 11th August 2011 will be superseded.

II
NOTICES TO MARINERS AND CHART CORRECTIONS

200 3 Ed 22/09/11 Last NM 25/2012 (Malaysia, Marine Department NM No. 17/2012) **NM 43/2012**

Insert  **Fl. Y. 4s** 2°53·69'N 100°59·70'E

201 4 Ed 7/10/10 Last NM 24/2012 (Malaysia, Marine Department NM No. 20/2012) **NM 44/2012**

Insert  **Fl. Y. 4s** 2°03·03'N 102°17·77'E

Insert depth **5₁** (a) 1°41·42'N 101°49·65'E

Delete  **Fl. 7s** 1°20·95'N 102°10·10'E

Depth **6₂** , close NW of: (a) above

II TEMPORARY AND PRELIMINARY NOTICES

*(NM 46T/2012) VIBRO-CORING SAMPLING IN WEST BOUND LANE OF THE TRAFFIC SEPARATION SCHEME IN THE SINGAPORE STRAIT.

Purpose

Mariners navigating in the Singapore Strait are hereby informed that Vibro-coring sampling operations will be carried out in the westbound lane of the Traffic Separation Scheme.

Date

With effect from 1st March to 31st May 2012 (3 months).

Duration

0700 to 1900hrs including Sunday and Public Holidays.

Working Area

Within an area bounded by the following coordinates from Singapore Port Limit and the area within the westbound lane of the Traffic Separation Scheme (please see charts attached):

Area 1 WGS 84 Datum		
Points	Lat. (N)	Long. (E)
1	1°15.827'	103°57.737'
2	1°14.865'	103°58.134'
3	1°13.298'	103°54.401'
4	1°13.884'	103°54.131'

Area G4 WGS 84 Datum		
Points	Lat. (N)	Long. (E)
1	1°14.897'	103°58.121'
2	1°16.217'	104°01.630'
3	1°16.097'	104°01.674'
4	1°14.684'	103°58.200'

Vessels

Vessels involved in the operations will display the appropriate day and night signals and will stand by on VHF Ch 14 and 12 and shall follow any traffic information given by Vessel Traffic Information Service (VTIS).

Navigational Broadcast

Navigational warning broadcast will be promulgated by VTIS on VHF CH 09 and NAVTEX to inform vessels of the dredging operation. Mariners are to maintain a listening watch for the above safety information.

Caution

Mariners are advised to:

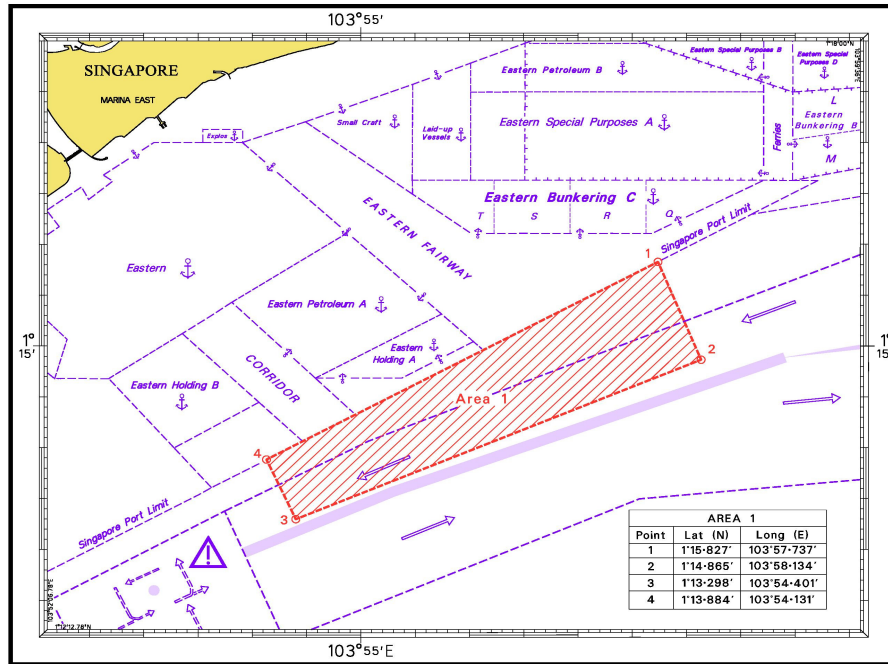
- (a) Navigate with caution and proceed at slow speed when approaching the area; and
- (b) Keep well clear of the working vessels.

Charts affected: SP1/GSP1, 202, 502 & 4041

Source: PENTA -OCEAN / KOON / HYUNDAI / VAN OORD JOINT VENTURE
HD/DB67/5/2012

II TEMPORARY AND PRELIMINARY NOTICES

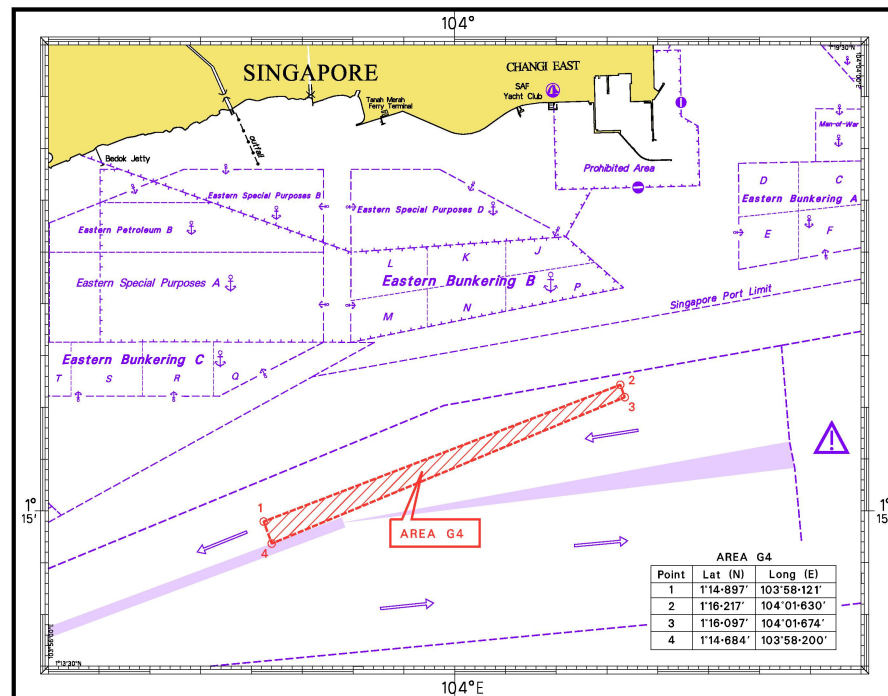
VIBRO-CORING SAMPLING IN WEST BOUND LANE OF THE TRAFFIC SEPARATION SCHEME IN THE SINGAPORE STRAIT – AREA 1



Prepared by TanLP/GohSN Hydrographic Dept MPA 30 Jan 12 CA021/12

HY Code AA1900912

VIBRO-CORING SAMPLING IN WEST BOUND LANE OF THE TRAFFIC SEPARATION SCHEME IN THE SINGAPORE STRAIT – AREA G4



Prepared by TanLP/GohSN Hydrographic Dept MPA 30 Jan 12 CA021/12

HY Code AA1900812

II TEMPORARY AND PRELIMINARY NOTICES

(NM 47T/2012) TGN INTRA - ASIA SUBMARINE CABLE SYSTEM – Submarine Cable repair at Segment 1

Purpose : The Intra Asia submarine cable linking Singapore, Vietnam, Phillipines, Hong Kong and China will be repaired at location latitude 1°18-868' N longitude 104° 21-555' E in the eastbound Lane of the Traffic Separation Scheme, in the Singapore Strait.

Work Vessel : Cable Ship 'CS LODBROG'

Call Sign : FNPW

Work Dates : With effect from 3rd May to 10th May 2012. (Approximately 8 days)

Operating hours : 24 hours, including Sunday and Public Holiday .

1. The submarine cable repair working area are delimited by the following positions :

Position	(Co-ordinates: WGS84)		Remarks (Working hours)
	Latitude (N)	Longitude (E)	
From Point A	1° 19-16'	104° 20-12'	24 hours
to Point B	1° 19-14'	104° 21-49'	24 hours
to Point C	1° 19-32'	104° 21-84'	24 hours
to Point D	1° 19-91'	104° 22-29'	24 hours
to Point E	1° 19-56'	104° 22-76'	24 hours
to Point F	1° 18-92'	104° 22-20'	24 hours
to Point G	1° 18-60'	104° 21-62'	24 hours
to Point H	1° 18-69'	104° 20-24'	24 hours

2. **Charts affected :** 202 and 503.

3. **Caution :** Mariners are advised
- a) to navigate with caution.
 - b) not to anchor or trawl in the vicinity of the working area.
 - c) to give a wide berth from the working vessel.

Source : HD/DB67/9/2012.

II TEMPORARY AND PRELIMINARY NOTICES

(NM 48T/2012) ASIA SUBMARINE CABLE EXPRESS (ASE) – Post Lay Inspection and Burial Works (PLIB)

Purpose : The ASE submarine cable Post Lay Inspection and Burial Works shall be executed at Sector 9, in way of the West bound and East bound Traffic lane of the Traffic Separation Scheme (TSS) in the Singapore Strait.

Work Vessel : MIRAERO

Call Sign : DSRB3

Date of work With effect from 10th May to 31st May 2012.

Duration of survey This working vessel will only take up to 5 working days to start and finish the PLIB operations within the stipulated period.

Operating hours : Daily, including Sunday and Public Holiday .

1. The locations where the PLIB activity will take place are as follows :

Location No.	(Co-ordinates: WGS84)		Remarks (Working hours)
	Latitude (N)	Longitude (E)	
No. 1 from	1° 16·13'	104° 04·14'	24 hours
to	1° 15·39'	104° 04·75'	24 hours
No. 2 from	1° 16·80'	104° 03·27'	24 hours
to	1° 16·77'	104° 03·32'	24 hours

2. Charts affected : GSP1, SP1, 202, 502, 503, 4041 and 4042.

3. Mariners are advised
- a) to navigate with caution.
 - b) not to anchor or trawl in the vicinity of the cable route.
 - c) to give a wide berth when approaching the working vessel.

Source : HD/DB67/10/2012

(NM 49T/2012) SALVAGE WORK OF WRECK “M.V. CALIFORNIA” – MALACCA STRAIT

Purpose : Mariners are advised that the salvage work of wreck “M.V. California” is being carried out in the Malacca Strait.

Position : Lat. 1°57·7' N Long. 102°10·6'E

Duration : 27th March to 1st August 2012.

Work Vessels : Accommodation Barge : ‘Tropical 388’
Towing Tug : ‘SWISSCO Sentry’
Assist Tug : ‘SWISSCO Sunrise’

Caution: Mariners are advised

- a) to navigate with caution.
- b) not to anchor or trawl in the vicinity of the working area.
- c) to give a wide berth from the working vessels.

Charts affected : 201

Source : Malaysia, Marine Department Notices to Mariners No. 23T/2012.

III NAVIGATIONAL INFORMATION

*(NM 50/2012) PORT MARINE NOTICES

The following PMNs have been shortlisted, as they would be of particular interest to mariners.

These notices can be accessed directly from MPA website:

http://www.mpa.gov.sg/sites/port_and_shipping/circulars_and_notices/port_marine_notices.page

PMN No.	Subject
42/2012	Reclamation of Jurong Island Phase 4.
44/2012	Construction of Pontoon facility at West Coast Base.
45/2012	Area survey off Jurong Island.
46/2012	Demolition of jetty off Sentosa.
47/2012	Mooring and unmooring of vessels at mooring buoys at Banyan Basin, Jurong Island.
48/2012	Reclamation of Tuas View Extension.
49/2012	Removal of submarine pipeline off Jurong Island.
50/2012	Construction works of Mega Shipyard at Tuas View Extension.
51/2012	Construction of floating sea barrier at Sentosa Cove.

*(NM 51/2012) SINGAPOREAN PRINT-ON-DEMAND (POD) CHARTS

Print-On-Demand (POD) Charts are the most up-to-date paper nautical charts printed for navigational use. These nautical charts are produced in accordance with the International Hydrographic Organisation (IHO) chart specifications. These official nautical charts are continually updated to the latest Notices to Mariners before they are printed and sold to users.

These POD Charts include GSP1, SP1, 200, 201, 202, 500, 501, 502 and 503.

BENEFITS TO OUR CUSTOMERS

Convenience

Customers need not make numerous hand corrections to the nautical charts before use. In addition the updated POD Charts are more accurate and reliable than offset printed charts with hand corrections.

Clarity

Clarity in the presentation of updated information as compared to lithographic printed charts, where in some cases there are several overlapping corrections over existing information.

Coverage

The POD Charts cover the Malacca and Singapore Straits, from One Fathom Bank to Horsburgh Lighthouse.

**III
AMENDMENTS TO PUBLICATIONS**

Nil

IV
REPRINT OF RADIO NAVIGATIONAL WARNINGS

The following Radio Navigational Warnings have been shortlisted, as they would be of particular interest to mariners.

TT022 (AMENDED 060130Z)

A COASTER VESSEL WAS REPORTED SUNK IN POSITION 01°10'80"N 103°34'00"E.

TT034

BATU BERHANTI ISOLATED DANGER BUOY FL(2)5S AT POSITION 01°07'59"N 103°45'67"E MISSING.

TT173

VESSELS IN EAST JOHOR STRAIT ARE ADVISED TO NAVIGATE WITH CAUTION WHEN NEAR THE PROJECT AREAS OFF PULAU TEKONG, CHANGI AND MALANG PAPAN AS SHALLOW WATER AREAS EXIST. VESSELS ARE ADVISED TO KEEP LOOKOUT FOR TUGS AND BARGES NAVIGATING NEAR THE PROJECT AREAS AND PASSENGER FERRIES CROSSING BETWEEN CHANGI AND PULAU TEKONG AND VICINITY OF PASIR GUDANG.

TT884

SALVAGE OPERATIONS UNDERWAY IN 01°13'40"N 103°57'75"E. ALL SHIPS ARE REQUESTED TO GIVE A WIDE BERTH OF AT LEAST 5 CABLES WHEN PASSING THE AREA.

TT931

VESSELS NAVIGATING IN THE SINGAPORE STRAIT ARE REQUESTED NOT TO DIRECT THEIR HIGH INTENSITY SEARCHLIGHTS SKYWARD IN THE VICINITY OF CHANGI AIRPORT TO AVOID DISRUPTION TO AIR NAVIGATION.

TT961

VESSELS INTENDING TO CROSS THE TRAFFIC SEPARATION SCHEME(TSS) OR PRECAUTIONARY AREAS IN THE SINGAPORE STRAIT DURING THE HOURS OF DARKNESS ARE RECOMMENDED TO DISPLAY THE NIGHT SIGNALS CONSISTING OF 3 ALL-ROUND GREEN LIGHTS IN A VERTICAL LINE WITH EFFECT FROM 1ST JULY 2011 AT 0000UTC (0800SGT) AS DETAILED IN MARITIME AND PORT AUTHORITY OF SINGAPORE'S PORT MARINE CIRCULAR, 02 OF 2011 DATED 30 MAY 2011.

ISSUED BY SINGAPORE PORT OPERATIONS CONTROL CENTRE (as at 29th April 2012)

V
**EXTRACT OF ADMIRALTY NOTICES TO MARINERS
 FOR DUAL BADGED CHARTS**

These notices can also be accessed directly from UKHO Website:

<http://www.ukho.gov.uk/ProductsandServices/MaritimeSafety/Pages/NMPublic.aspx>

1591* SINGAPORE – Marina South Southwards – Jetties. Light-beacon. Anchorage area. Maritime limit. Berths. Coastline. Depths. Obstructions. Buoyage. Legends.

Light List Vol. F, 2011/12, 1226.14

Source: Maritime and Port Authority of Singapore

Chart 4037 [*previous update 1115/12*] WGS84 DATUM

Insert the accompanying block, showing new jetties, berths, light beacon and amendments to coastline, depths, obstructions, buoyage, anchorage area, maritime limit and legends, centred on: 1° 15'·863N., 103° 51'·760E.

Chart 4040 [*previous update 1115/12*] WGS84 DATUM

Insert the accompanying block, showing new jetties and amendments to coastline, depths, obstruction, anchorage area, maritime limit and legends, centred on: 1° 15'·74N., 103° 51'·62E.

Chart 4041 [*previous update 1116/12*] WGS84 DATUM

Insert the accompanying block, showing new jetties, light beacon and amendments to coastline, depths, obstruction, buoyage, anchorage area, maritime limit and legends, centred on: 1° 15'·79N., 103° 51'·70E.

1592* SINGAPORE – Johor Strait – Tuas View South-westwards – Reclamation area. Depths. Legends. Works

Source: Maritime and Port Authority of Singapore

Chart 4038 [*previous update 119/12*] WGS84 DATUM

Insert the accompanying block, showing amendments to depths, legends, works and reclamation area, centred on: 1° 16'·09N., 103° 36'·53E.

1593* SINGAPORE – Keppel Harbour – Brani Terminal North-eastwards – Depths.

Source: Maritime and Port Authority of Singapore

Chart 4037 [*previous update 1591/12*] WGS84 DATUM

Insert depth *15_s* (a) 1° 15'·756N., 103° 50'·598E.
 (b) 1° 15'·686N., 103° 50'·652E.

Delete depth *15* enclosed by 15m contour, adjacent to: (a) above
 depth *15_l* , close north of: (b) above

1594* SINGAPORE – Pulau Bukom Northwards and Pulau Ular Northwards and Southwards – Dredged depths.

Source: Maritime and Port Authority of Singapore

Chart 4032 [*previous update 1115/12*] WGS84 DATUM

Amend dredged depth to, **9.1m (2011)** 1° 13'·634N., 103° 45'·362E.
 dredged depth to, **11.2m (2011)** 1° 14'·280N., 103° 45'·423E.
 dredged depth to, **5.6m (2011)** 1° 14'·290N., 103° 45'·569E.
 dredged depth to, **13.0m (2011)** 1° 14'·436N., 103° 45'·845E.
 dredged depth to, **13.0m (2012)** 1° 14'·390N., 103° 45'·919E.
 dredged depth to, **16.2m (2011)** 1° 14'·317N., 103° 46'·011E.
 dredged depth to, **13.5m (2011)** 1° 14'·238N., 103° 46'·102E.

V
EXTRACT OF ADMIRALTY NOTICES TO MARINERS
FOR DUAL BADGED CHARTS

1594* SINGAPORE – Pulau Bukom Northwards and Pulau Ular Northwards and Southwards – Dredged depths. (continued)

Source: Maritime and Port Authority of Singapore

Chart 4035 [*previous update 390/12*] WGS84 DATUM

Insert the accompanying block, showing amendments to dredged depths, centred on:

1° 14'·030N., 103° 46'·130E.

1729(P) SINGAPORE – Sultan Shoal to Changi East – Anchorage areas. Fairways.

Source: Maritime and Port Authority of Singapore

1. Amendments to anchorages and fairways will be implemented from **0000 HOURS UT, 1 JUNE 2012**. The new anchorages and fairways are shown on the accompanying diagram.
2. The anchorages and fairways are listed below with their limits both before and after the implementation date. (All positions are referred to WGS84 Datum)

Anchorage designation	LIMITS UNTIL 0000 HOURS UT, 1 JUNE 2012	NEW LIMITS AFTER 0000 HOURS UT, 1 JUNE 2012
Tuas Petroleum Holding	1°15-031'N, 103°37-079'E 1°15-510'N, 103°38-078'E 1°15-168'N, 103°38-240'E 1°14-692'N, 103°37-240'E	Anchorage deleted
West Jurong	1°15-743'N, 103°38-564'E 1°14-505'N, 103°39-155'E 1°13-807'N, 103°37-661'E 1°14-692'N, 103°37-240'E 1°15-168'N, 103°38-240'E 1°15-510'N, 103°38-078'E	1°15-002'N, 103°38-918'E 1°14-505'N, 103°39-155'E 1°13-807'N, 103°37-661'E 1°14-305'N, 103°37-425'E
Selat Pauh Petroleum		1°13-524'N, 103°42-576'E 1°13-664'N, 103°42-833'E 1°13-234'N, 103°43-366'E 1°12-922'N, 103°43-270'E 1°13-047'N, 103°42-930'E 1°12-991'N, 103°42-826'E
Selat Pauh	1°13-780'N, 103°43-047'E 1°13-480'N, 103°43-747'E 1°13-314'N, 103°44-914'E 1°13-414'N, 103°45-463'E 1°13-180'N, 103°45-515'E 1°12-814'N, 103°44-547'E 1°12-814'N, 103°43-563'E 1°13-048'N, 103°42-930'E 1°13-580'N, 103°42-680'E	1°13-780'N, 103°43-047'E 1°13-480'N, 103°43-747'E 1°13-314'N, 103°44-914'E 1°13-414'N, 103°45-463'E 1°13-180'N, 103°45-515'E 1°12-814'N, 103°44-547'E 1°12-814'N, 103°43-563'E 1°12-922'N, 103°43-270'E 1°13-234'N, 103°43-366'E 1°13-664'N, 103°42-833'E
Raffles Reserved	1°11-898'N, 103°44-247'E 1°12-147'N, 103°44-546'E 1°11-347'N, 103°45-697'E 1°10-397'N, 103°45-000'E	1°11-368'N, 103°44-513'E 1°11-805'N, 103°45-038'E 1°11-347'N, 103°45-697'E 1°10-397'N, 103°45-000'E
Raffles Petroleum		1°12-046'N, 103°44-172'E 1°12-244'N, 103°44-409'E 1°11-805'N, 103°45-038'E 1°11-368'N, 103°44-513'E
Sudong Petroleum Holding		1°10-065'N, 103°43-171'E 1°09-770'N, 103°43-394'E 1°09-713'N, 103°43-313'E 1°09-905'N, 103°43-054'E

V
EXTRACT OF ADMIRALTY NOTICES TO MARINERS
FOR DUAL BADGED CHARTS

1729(P) SINGAPORE – Sultan Shoal to Changi East – Anchorage areas. Fairways. (continued)

Explosives	1°17-130'N, 103°53-546'E 1°17-130'N, 103°53-911'E 1°17-000'N, 103°53-911'E 1°17-000'N, 103°53-546'E	Anchorage deleted
Eastern	1°15-038'N, 103°51-766'E 1°16-015'N, 103°51-661'E 1°16-085'N, 103°51-759'E 1°15-922'N, 103°51-876'E 1°16-173'N, 103°52-222'E 1°16-333'N, 103°52-107'E 1°16-563'N, 103°52-427'E 1°16-441'N, 103°52-493'E 1°16-620'N, 103°52-716'E 1°16-680'N, 103°52-628'E 1°17-000'N, 103°53-095'E 1°17-000'N, 103°53-911'E 1°16-112'N, 103°54-876'E 1°14-680'N, 103°52-679'E 1°14-680'N, 103°52-179'E 1°15-066'N, 103°52-294'E 1°15-241'N, 103°52-119'E 1°15-013'N, 103°51-795'E	1°15-038'N, 103°51-766'E 1°15-409'N, 103°51-727'E 1°15-764'N, 103°52-212'E 1°16-028'N, 103°52-022'E 1°16-173'N, 103°52-222'E 1°16-333'N, 103°52-107'E 1°16-563'N, 103°52-427'E 1°16-441'N, 103°52-493'E 1°16-620'N, 103°52-716'E 1°16-680'N, 103°52-628'E 1°17-000'N, 103°53-095'E 1°17-000'N, 103°53-911'E 1°16-112'N, 103°54-876'E 1°14-680'N, 103°52-679'E 1°14-680'N, 103°52-179'E 1°15-066'N, 103°52-294'E 1°15-241'N, 103°52-119'E 1°15-013'N, 103°51-795'E
Small Craft	1°17-205'N, 103°54-491'E 1°17-573'N, 103°55-478'E 1°16-500'N, 103°55-470'E	Anchorage deleted
Laid Up Vessels	1°17-573'N, 103°55-478'E 1°17-780'N, 103°56-012'E 1°16-630'N, 103°56-012'E 1°16-630'N, 103°55-470'E	Anchorage deleted
Small Craft A		1°18-297'N, 103°57-333'E 1°18-297'N, 103°58-710'E 1°18-000'N, 103°58-710'E 1°18-000'N, 103°56-573'E
Eastern Petroleum B	1°17-975'N, 103°56-513'E 1°17-975'N, 103°57-620'E 1°17-592'N, 103°58-710'E 1°17-500'N, 103°58-710'E 1°17-500'N, 103°56-013'E 1°17-780'N, 103°56-013'E	1°18-000'N, 103°56-573'E 1°18-000'N, 103°58-710'E 1°17-498'N, 103°58-710'E 1°17-498'N, 103°56-000'E 1°17-776'N, 103°56-000'E
Eastern Special Purposes B	1°18-297'N, 103°57-333'E 1°18-297'N, 103°58-710'E 1°17-592'N, 103°58-710'E 1°17-975'N, 103°57-620'E 1°17-975'N, 103°56-513'E	Anchorage deleted
Eastern Special Purposes A	1°17-500'N, 103°56-013'E 1°17-500'N, 103°58-710'E 1°16-630'N, 103°58-710'E 1°16-630'N, 103°56-013'E	1°17-498'N, 103°56-000'E 1°17-498'N, 103°58-710'E 1°16-630'N, 103°58-710'E 1°16-630'N, 103°55-286'E 1°17-204'N, 103°54-489'E 1°17-776'N, 103°56-000'E
Eastern Bunkering C	1°16-630'N, 103°55-470'E 1°16-630'N, 103°58-710'E 1°16-107'N, 103°57-682'E 1°16-107'N, 103°56-012'E 1°16-500'N, 103°55-470'E	1°16-630'N, 103°55-286'E 1°16-630'N, 103°58-710'E 1°16-107'N, 103°57-682'E 1°16-107'N, 103°56-012'E

V
EXTRACT OF ADMIRALTY NOTICES TO MARINERS
FOR DUAL BADGED CHARTS

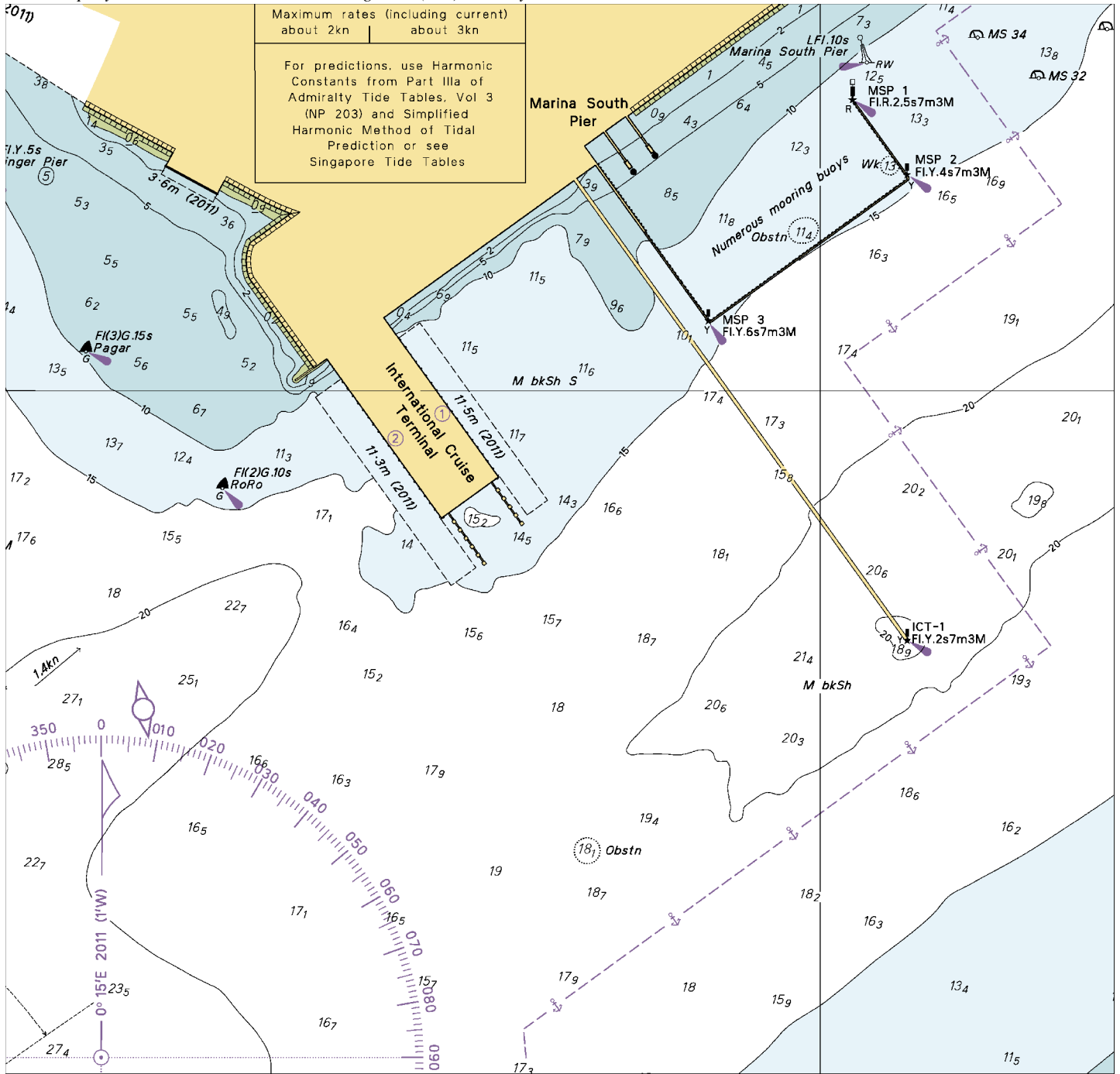
1729(P) SINGAPORE – Sultan Shoal to Changi East – Anchorage areas. Fairways. (continued)

Eastern Special Purposes D	1°18·297'N, 103°58·980'E 1°18·297'N, 103°59·852'E 1°17·647'N, 104°01·094'E 1°17·497'N, 103°58·979'E	Anchorage deleted
Small Craft B		1°18·297'N, 103°58·978'E 1°18·297'N, 103°59·853'E 1°18·000'N, 104°00·420'E 1°18·000'N, 103°58·978'E
Eastern Petroleum C		1°18·000'N, 103°58·978'E 1°18·000'N, 104°00·420'E 1°17·647'N, 104°01·095'E 1°17·497'N, 103°58·978'E

Fairway designation	LIMITS UNTIL 0000 HOURS UT, 1 JUNE 2012	NEW LIMITS AFTER 0000 HOURS UT, 1 JUNE 2012
Pasir Panjang Fairway	1°16·053'N, 103°46·309'E 1°16·678'N, 103°46·679'E 1°16·578'N, 103°46·846'E 1°16·341'N, 103°47·181'E 1°16·166'N, 103°47·080'E 1°16·170'N, 103°47·070'E 1°16·230'N, 103°47·112'E 1°16·449'N, 103°46·803'E 1°15·938'N, 103°46·500'E	Fairway deleted
East Keppel Fairway		A northern limit has been inserted joining positions: 1°15·142'N, 103°50·917'E (existing limit) 1°15·038'N, 103°51·766'E (existing limit)
West Keppel Fairway		The existing limits have been amended as follows: 1°15·391'N, 103°45·677'E (existing limit) 1°15·848'N, 103°46·366'E 1°15·523'N, 103°46·603'E 1°15·189'N, 103°47·159'E 1°16·115'N, 103°47·707'E 1°15·746'N, 103°48·307'E 1°15·595'N, 103°48·392'E (existing limit)
CORRIDOR		The legend, CORRIDOR, centred on 1°14·700'N, 103°54·235'E, is replaced by legend, EASTERN CORRIDOR

Updated to Admiralty Notices to Mariners Edition No. 17 of 2012 dated 26th April 2012.

To accompany Notice to Mariners 1591/12. Image Size (mm) 182.6 by 189.3

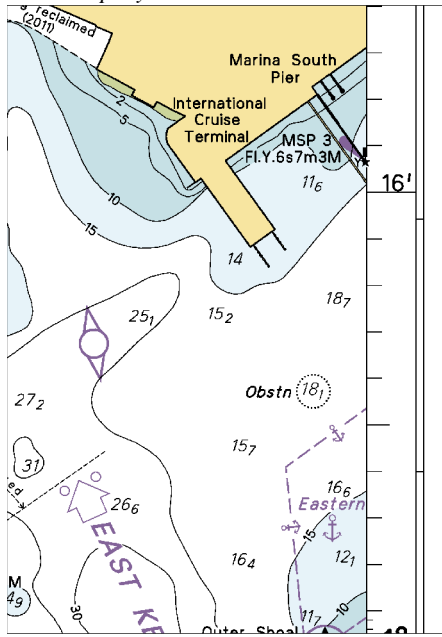


Maximum rates (including current) about 2kn	about 3kn
--	-----------

For predictions, use Harmonic Constants from Part IIIa of Admiralty Tide Tables, Vol 3 (NP 203) and Simplified Harmonic Method of Tidal Prediction or see Singapore Tide Tables

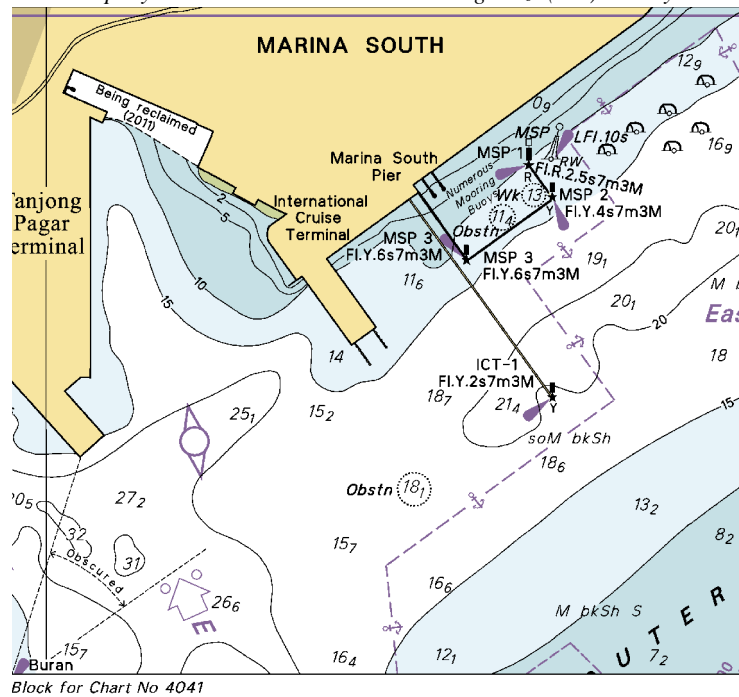
Block for Chart No 4037

To accompany Notice to Mariners 1591/12. Image Size (mm) 83 by 57.9

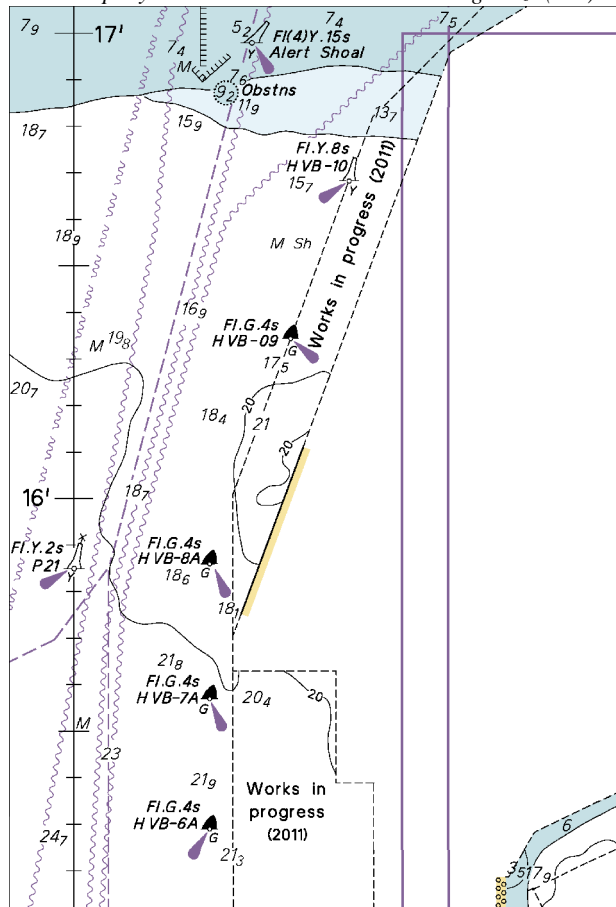


Block for Chart No 4040

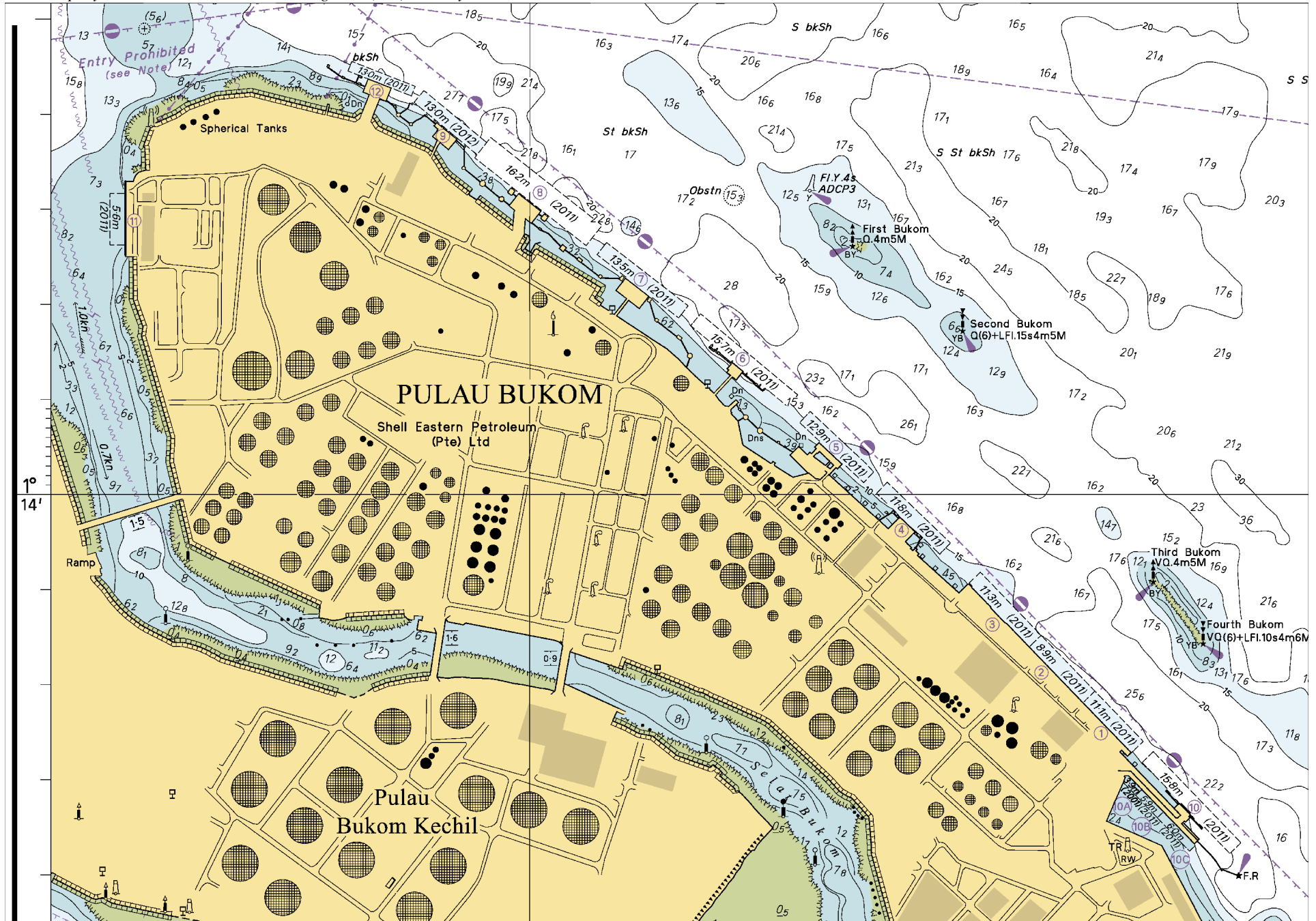
To accompany Notice to Mariners 1591/12. Image Size (mm) 88.1 by 96.3



To accompany Notice to Mariners 1592/12. Image Size (mm) 119.2 by 80.6



Block for Chart No 4038



MPA ENC DISTRIBUTORS

CONTACT PERSON/ DESIGNATION	ADDRESS	TELEPHONE/FAX NO./EMAIL/WEBSITE
ChartWorld GmbH ChartWorld Asia Pacific Pte Ltd.	Ruhrstrasse 90, 22761 Hamburg, Germany Frontech Centre 07-01, 15 Jalan Kilang Barat, Singapore 159357	Tel. No.: +49 40 853 58 6942 Fax No.: +49 40 853 58 6949 Email: sales@chartworld.com Tel No.: +65 65133500 Website : http://www.chartworld.com
DPM (Singapore) Pte Ltd	1 Maritime Square, #09-72 HarbourFront Centre, Singapore 099253	Tel. No.: +65 6270 4060 Fax No.: +65 6276 3858 Email: sales@dpmsingapore.com.sg Website: http://www.dpmsingapore.com.sg
Maritime Information Systems (MARIS) Maritime Information Systems AS (MARIS)	52, Telok Blangah Road #01-06, Telok Blangah House, Singapore 058809 Danholmen 25, 3128 Notteroy, Norway	Tel. No.: +65 6276 1472 Fax No.: +65 6276 1473 Email: : support@maris.sg Website: http://www.maris.no Tel. No.: +47 33 30 42 50 Fax No.: +47 33 30 42 51 Email: : sales@maris.no Website: http://www.maris.no
Motion Smith	15 Jalan Kilang Barat #08-01/05 Frontech Centre, Singapore 159357	Tel. No.: +65 6220 5098 Fax No.: +65 6225 4902 Email: sales@motsmith.com Website: http://www.motsmith.com
Transas Marine Pacific Pte Ltd	Cyber Centre 16 & 18 Jalan Kilang Barat Singapore 159358	Tel. No.: +65 6271 0200 Fax No.: +65 6271 7300 Email: dominic@transas.com.sg Website: http://www.transas.com.sg
Vector Services Pte Ltd	196 Pandan Loop, #06-29 Pantech Business Hub Singapore 128384	Tel. No.: +65 6777 3602 Fax No.: +65 6777 9203 Email: kwchoy@pacific.net.sg
Japan Hydrographic Association Electronic Charts Division	Daiichi Sogo Bldg, 6F 1-6-6, Hanedakuko, Ota-ku Tokyo 144-0041, Japan	Tel. No.: +81 3 5708 7093 Fax No.: +81 3 5708 7094 Email: shimizu-6kj@jha.jp Website: http://www.jha.or.jp/en/jha/
Jeppesen Norway AS	P.O Box 212 , N-4371 Egersund, Norway	Tel No.: +47 51 46 4700 Fax No: +47 51 46 4701 Email: license.marine@jeppesen.com Website : http://www.jeppesen.com/marine
PRIMAR STAVANGER	Lervigsveien 36, P.O Box 60, N-4001 Stavanger, Norway	Tel. No.: +47 51 93 9500 Fax No.: +47 51 93 9501 Email: sales@ecc.no Website : http://www.primar.no
The United Kingdom Hydrographic Office	Admiralty Way, Taunton, Somerset, TA1 2DN United Kingdom	Tel. No.: +44 1823 33 7900 Fax No.: +44 1823 28 4077 Emails: ENCs.SalesReports@ukho.gov.uk Website: http://www.ukho.gov.uk

Chart Agents for the Maritime and Port Authority of Singapore
Nautical Charts and Publications

Please approach any of the appointed chart agent to purchase the Singapore Nautical Charts and Publications.

CHART AGENT	ADDRESS	TELEPHONE/FAX NO./EMAIL/WEBSITE
DPM (Singapore) Pte Ltd	1 Maritime Square, #09-72 HarbourFront Centre, Singapore 099253	Tel. No.: +65 6270 4060 Fax No.: +65 6276 3858 Email: sales@dpmsingapore.com.sg Website: http://www.dpmsingapore.com.sg
E.W. Liner Charts & Publications Pte Ltd	102F, Pasir Panjang Road, #08-01, Citilink Warehouse Complex, Singapore 118530	Tel. No.: +65 6323 0773 Fax No.: +65 6323 0775 Email: ewliner@singnet.com.sg Website: http://www.ewliner.com
Motion Smith	15 Jalan Kilang Barat #08-01/05 Frontech Centre Singapore 159357	Tel. No.: +65 6220 5098 (After office hours:+65 8163 9993) Fax No.: +65 6225 4902 Email: sales@motsmith.com Website: http://www.motsmith.com

HYDROGRAPHIC NOTE - Instructions

1. Mariners are requested to notify the Chief Hydrographer, Maritime and Port Authority of Singapore, when new or suspected dangers to navigation are discovered, changes are observed in aids to navigation or where corrections to nautical publications may be necessary. Reports, which cannot be confirmed or are lacking in certain details should not be withheld.
2. Any ambiguities of time, positioning and depth should be stressed and any firm expectation of being able to check the information provided on a following voyage should be mentioned.
3. Mariners using satellite position fixing systems, eg. GPS, should provide details of equipment and datum used (where applicable). Where bearings (true or magnetic) are taken visually or by radar to fix a position, it should include more than two objects in order to provide a check on its accuracy. A position may also be defined by bearing and distance from a conspicuous object eg. beacon, lighthouse etc.
4. The note should include a tracing or a digital image of the chart used and the details should be clearly marked.
5. Echo sounders frequently register greater depths than the advertised maximum depth for the equipment, eg. a trace appearing at 50 metres may be in fact be 550 metres or even 1050 metres for equipment whose maximum depth is 500 metres. Erroneous depths caused by 2nd transmission error can usually be recognised by the following:
 - (a) the tracing being weaker than normal for the depth registered,
 - (b) the trace appearing to pass through the transmission line,
 - (c) the feathery nature of the trace.
6. Upon receipt of a hydrographic note, a Notice to Mariners may be issued. The sender's vessel or name is quoted as the source unless the same information is also received in foreign Notices to Mariners.
7. Reports of shoals, uncharted dangers and defects in aids to navigation may also be made to the appropriate Singapore Port Operations Control Centre on VHF Channels 10, 12, 14, 68 or 73.

HYDROGRAPHIC NOTE

To:

Chief Hydrographer
Maritime and Port Authority of Singapore
460 Alexandra Road PSA Building #20-00
Singapore 119963

Tel : (65) 6375 1227
Fax : (65) 6278 7646
Email : hydrographic@mpa.gov.sg

Sender's Contact Details :

Date :

Name of Vessel :

Address of Sender :

Tel : Fax :

Email :

Nature of Observation :

General Location :

Subject :

Position : Lat. Long.

Charts Used :

Date & Time of Observation :

Details :

.....

.....

Attachment :

Equipment Used :

Type of Position Fixing : GPS / DGPS Others :

Type of Echo Sounder :

Name and Signature :

Ship's/Company's Stamp :