



SINGAPOREAN NOTICES TO MARINERS

SECTION	CONTENT	Page
I	Index of Charts & Publications	1
II	New Publications	6
	Notices to Mariners and Chart Corrections	10
	Temporary and Preliminary Notices	11
III	Navigational Information	13
	Amendments to Publications	14
IV	Reprint of Radio Navigational Warnings	16
V	Extract of Admiralty Notices to Mariners for Dual Badged Charts	17

The monthly Notices to Mariners contain corrective information affecting charts published by the Hydrographic Department, Maritime and Port Authority of Singapore. The information contained in these Notices should be updated on the charts affected. Notices under Section II apply only to the particular Singaporean Chart(s) indicated.

Mariners are requested to notify the Chief Hydrographer, Maritime and Port Authority of Singapore, immediately on the discovery of new dangers or suspected dangers to navigation and of changes or defects in aids to navigation. See Hydrographic Note on back page.

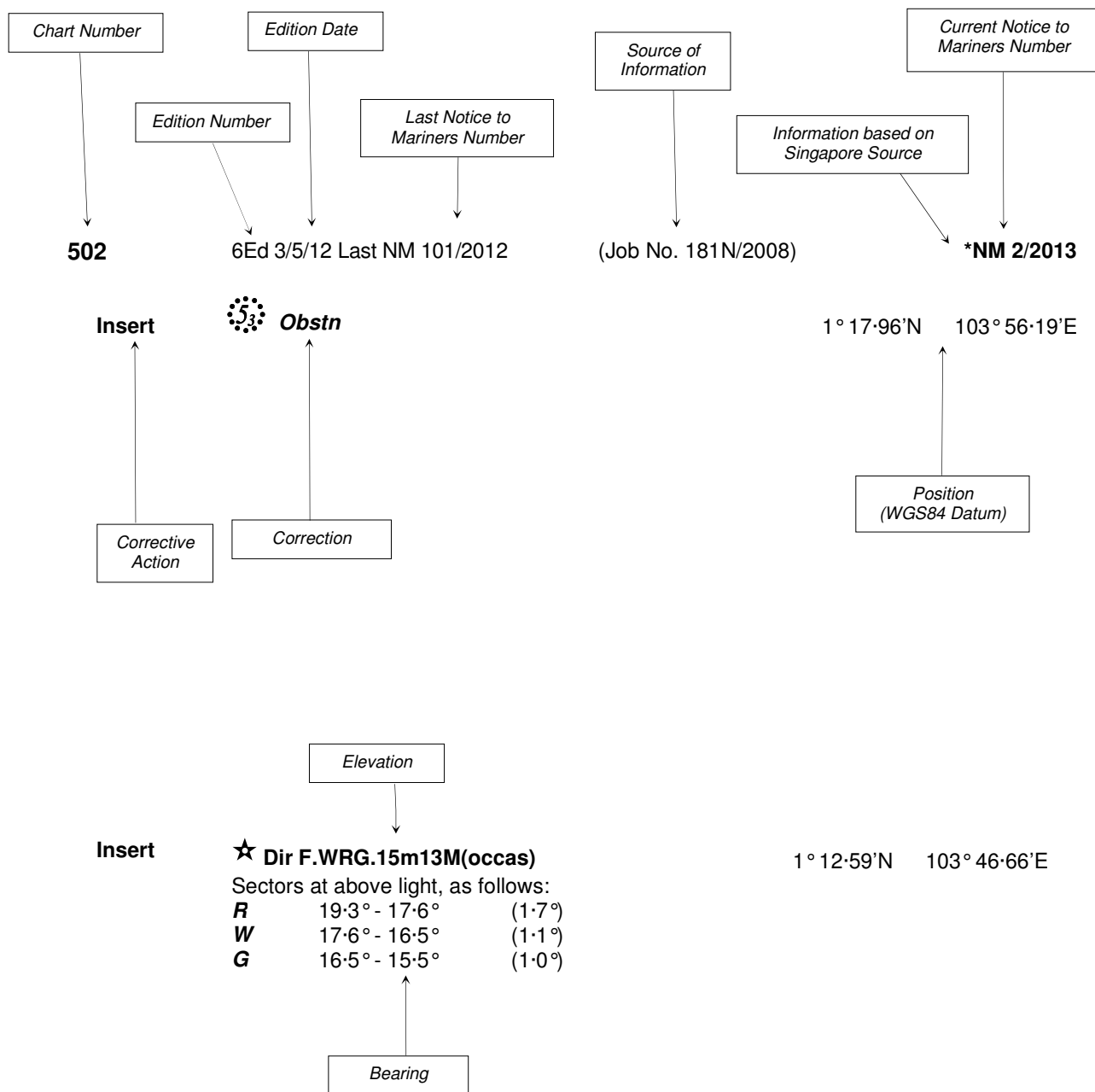
The monthly Singaporean Notices to Mariners can be accessed directly from the MPA website:
[www.mpa.gov.sg/sites/port_and_shipping/circulars_and_notices/singapore_notices_to_mariners\(ntm\).page](http://www.mpa.gov.sg/sites/port_and_shipping/circulars_and_notices/singapore_notices_to_mariners(ntm).page)

This service is offered free of charge.

Hydrographic Department
Maritime and Port Authority of Singapore
460 Alexandra Road
#20-00 PSA Building
Singapore 119963
Tel: (65) 6375 1227
Fax: (65) 6278 7646

EXPLANATION OF FORMAT

The elements of a typical chart correction are explained below.



Notes:

- a) Notice to Mariners number followed by:
T indicates a Temporary Notice (eg. ***NM 3T/2013**).
P indicates a Preliminary Notice (eg. ***NM 4P/2013**).
- b) Bearings are true reckoned clockwise from 000° to 359°; those relating to lights are from seaward.
- c) Heights and elevations are above Mean High Water Springs.

I
INDEX OF CHARTS AND PUBLICATIONS

INDEX OF AFFECTED CHARTS

DESCRIPTION	NOTICE NO.	PAGE NO.
Index of Singaporean Charts	-	3
Index of Dual Badged Charts	-	4
Index of Singapore Electronic Navigational Chart (ENC)	-	5
New Edition Singaporean Charts	-	6
New Edition Dual Badged Charts	-	7 to 9
Singaporean Chart GSP1/SP1	*50, *51	10
Singaporean Chart 502	*52	10
Temporary and Preliminary Notices	53P, *54P	11, 12
Singapore Port Marine Notices	*55	13
Singaporean Print-On-Demand (POD) Charts	*56	13
Amendments to Publications	*57	14, 15
Reprint of Radio Navigational Warnings	-	16
Extract of Admiralty Notices to Mariners for Dual Badged Charts	-	17 to 19
Singapore Electronic Navigational Chart (ENC) Distributors	-	20
Chart Agents for the Maritime and Port Authority of Singapore Nautical Charts and Publications	-	21

*Denotes information are based on Singaporean source.

I
INDEX OF CHARTS AND PUBLICATIONS

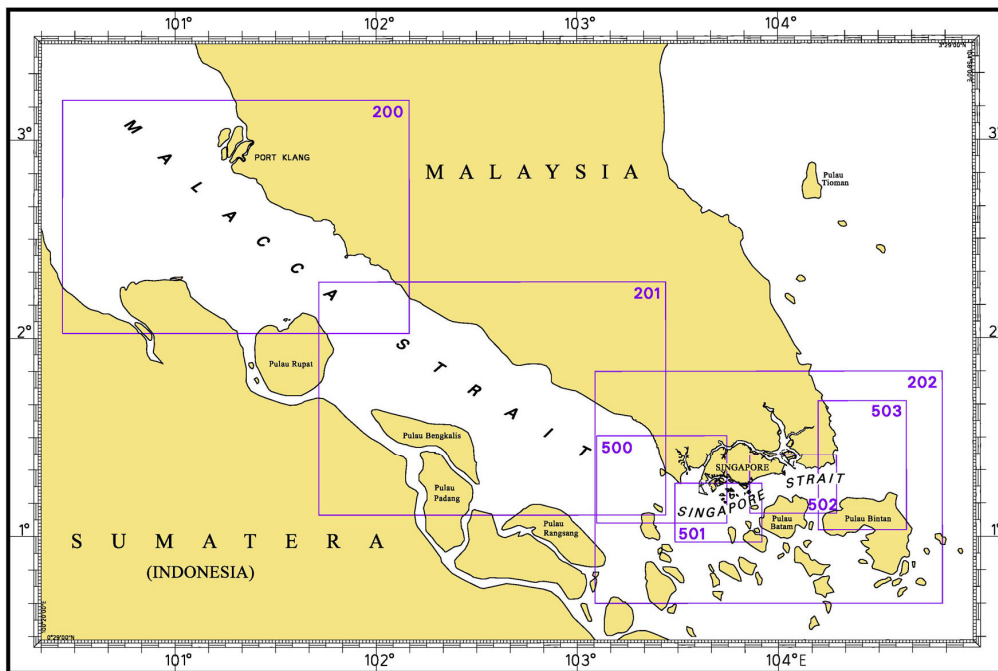
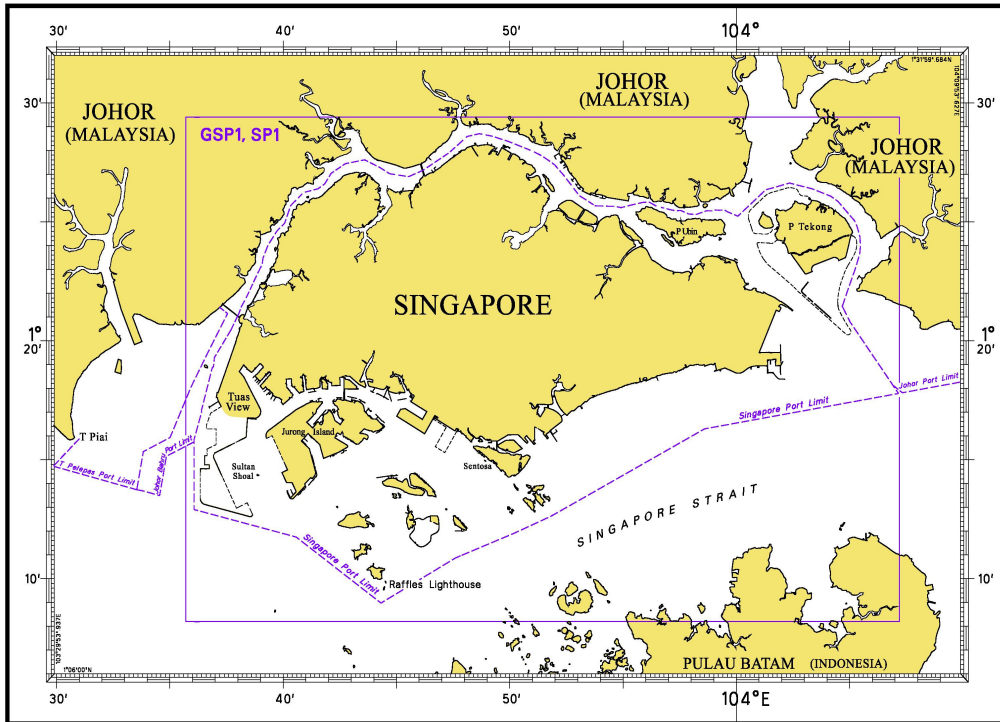
INDEX OF NOTICES

NOTICE NO.	DESCRIPTION	PAGE NO.
-	Index of Singaporean Charts	3
-	Index of Dual Badged Charts	4
-	Index of Singapore Electronic Navigational Chart (ENC)	5
-	New Edition Singaporean Charts	6
-	New Edition Dual Badged Charts	7 to 9
*50, *51	Singaporean Chart GSP1/SP1	10
*52	Singaporean Chart 502	10
53P, *54P	Temporary and Preliminary Notices	11, 12
*55	Singapore Port Marine Notices	13
*56	Singaporean Print-On-Demand (POD) Charts	13
*57	Amendments to Publications	14, 15
-	Reprint of Radio Navigational Warnings	16
-	Extract of Admiralty Notices to Mariners for Dual Badged Charts	17 to 19
-	Singapore Electronic Navigational Chart Distributors	20
-	Chart Agents for the Maritime and Port Authority of Singapore Nautical Charts and Publications	21

* Denotes information are based on Singaporean source.

I INDEX OF CHARTS AND PUBLICATIONS

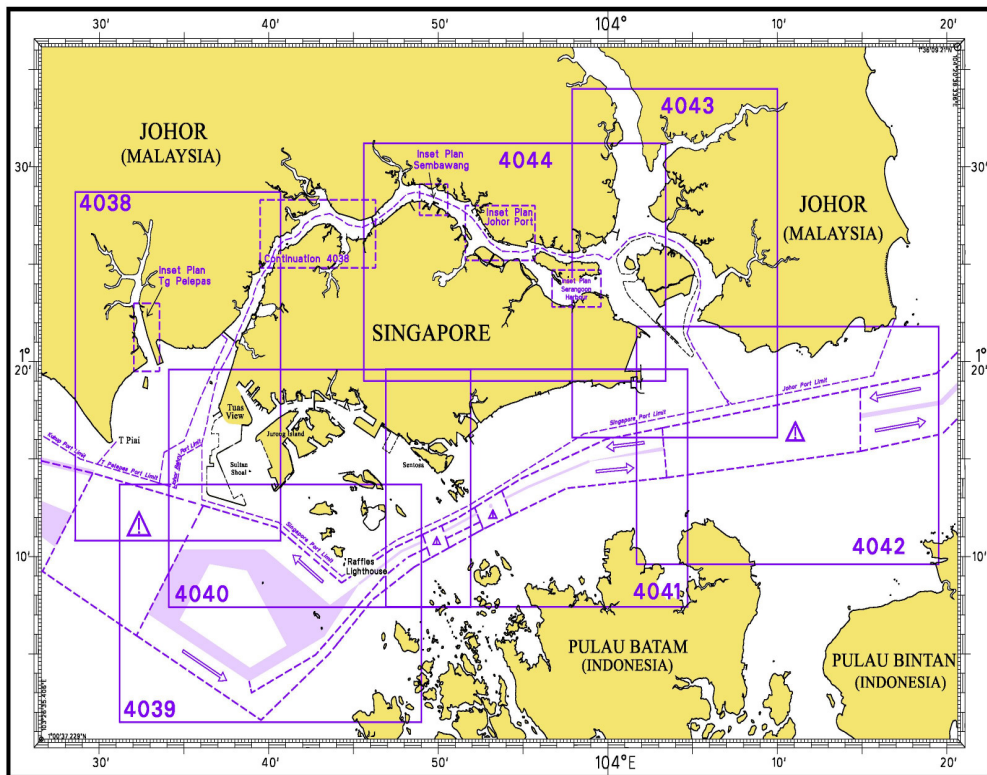
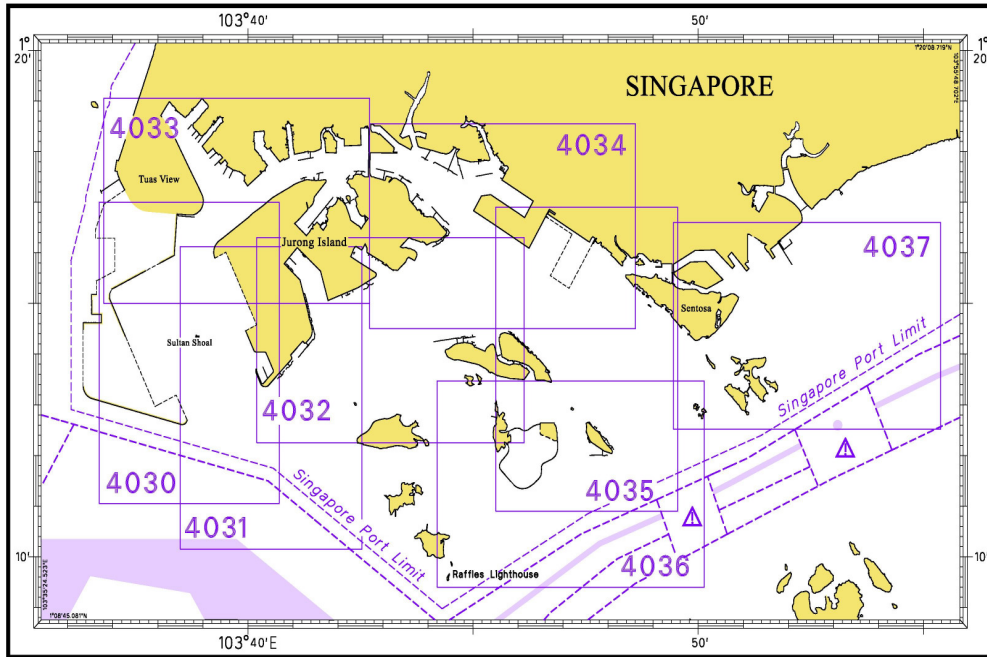
INDEX OF SINGAPOREAN CHARTS



Notes:
 Updated SINGAPOREAN Charts are available through our Print-On-Demand (POD) Chart Service. For more information, refer to Section III – Navigational Information. These charts can be purchased from our authorised Chart Agents.

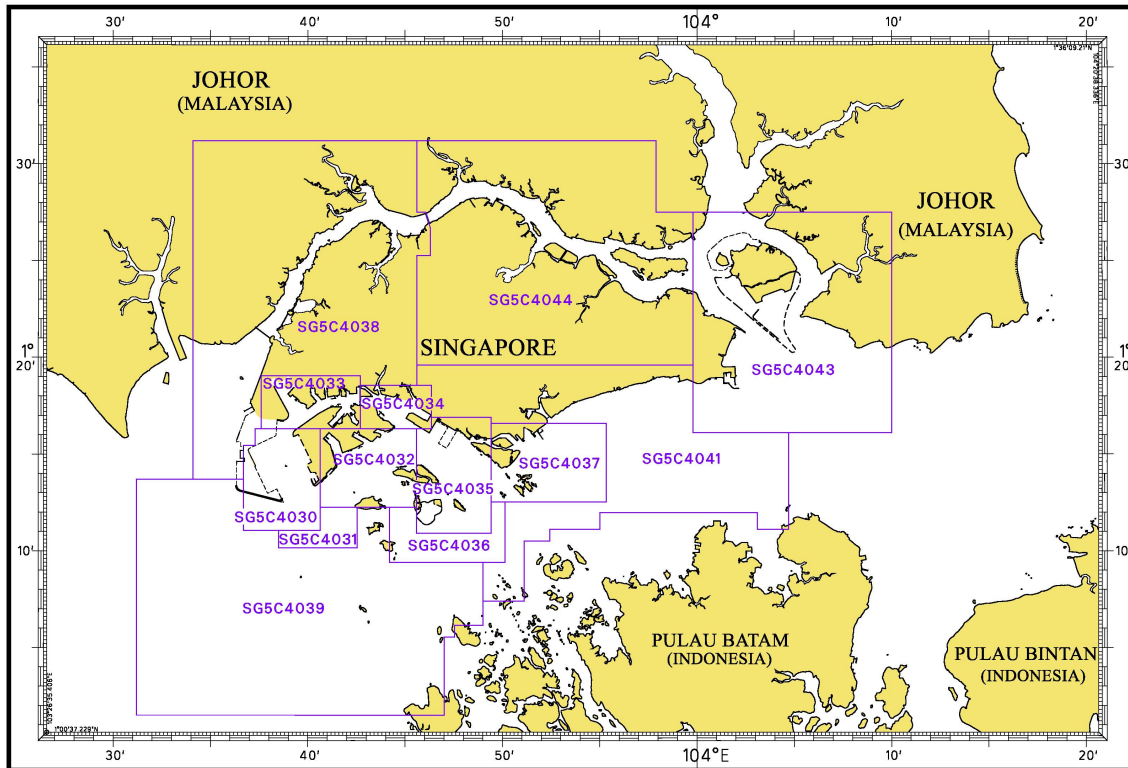
I
INDEX OF CHARTS AND PUBLICATIONS

INDEX OF DUAL BADGED CHARTS



I INDEX OF CHARTS AND PUBLICATIONS

INDEX OF SINGAPORE ELECTRONIC NAVIGATIONAL CHART (ENC)



COVERAGE OF SINGAPORE ELECTRONIC NAVIGATIONAL CHART (ENC)

ENC Name	ENC Coverage	ENC Edition
SG5C4030	West Jurong Anchorages and Temasek Fairway	5 th Edition (3/05/2012)
SG5C4031	Western Approaches to Jurong Island	5 th Edition (3/05/2012)
SG5C4032	Sinki Fairway	7 th Edition (3/05/2012)
SG5C4033	Tuas Bay, West Jurong Channel and Pesek Basin	5 th Edition (3/05/2012)
SG5C4034	East Jurong Channel, Pasir Panjang Terminal and West Keppel Fairway	11 th Edition (11/04/2013)
SG5C4035	Western Anchorages, Jong Fairway and Cruise Bay	13 th Edition (25/04/2013)
SG5C4036	Raffles Lighthouse to The Sisters	6 th Edition (3/05/2012)
SG5C4037	Keppel Harbour, Tanjong Pagar Terminal and Approaches	7 th Edition (25/04/2013)
SG5C4038	Johor Strait – Western Part	5 th Edition (3/05/2012)
SG5C4039	Western Approaches to Main Strait	5 th Edition (3/05/2012)
SG5C4041	Pulau Sebarok to Changi	7 th Edition (9/05/2013)
SG5C4043	Kuala Johor and Sungai Johor	8 th Edition (16/08/2012)
SG5C4044	Johor Strait – Eastern Part	8 th Edition (16/08/2012)

II NEW PUBLICATIONS

NEW EDITION SINGAPOREAN CHARTS TO BE PUBLISHED ON 16TH MAY 2013

Chart Number : GSP1
Title : Anchorages and Aids to Navigation (with area reference)
Coverage : Lat 01° 08' 20 N 01° 29' 40 N
 Long 103° 35' 70 E 104° 07' 20 E
Scale : 1: 60 000
Date Published : 16th May 2013
Size of Chart : 973·9 x 651·2 mm
Descriptions : This new edition includes new submarine cables, changes to depth contours from the latest surveys in the vicinity of Tuas and Eastern Anchorages, Pasir Panjang and Tanjong Pagar Terminals, East and West Jurong Channels, Jong Fairway, Approaches to Pulau Sebarok, Sembawang Shipyard, around Pulau Tekong and South of St John Island.

The existing chart of the same number published on 3rd May 2012 is superseded.

Chart Number : SP1
Title : Anchorages and Aids to Navigation
Coverage : Lat 01° 08' 20 N 01° 29' 40 N
 Long 103° 35' 70 E 104° 07' 20 E
Scale : 1: 60 000
Date Published : 16th May 2013
Size of Chart : 973·9 x 651·2 mm
Descriptions : This new edition includes new submarine cables, changes to depth contours from the latest surveys in the vicinity of Tuas and Eastern Anchorages, Pasir Panjang and Tanjong Pagar Terminals, East and West Jurong Channels, Jong Fairway, Approaches to Pulau Sebarok, Sembawang Shipyard, around Pulau Tekong and South of St John Island.

The existing chart of the same number published on 3rd May 2012 is superseded.

II NEW PUBLICATIONS

NEW EDITION DUAL BADGED CHARTS PUBLISHED ON 11TH AND 25TH APRIL 2013

Chart Number : 4034
Title : Port of Singapore
 East Jurong Channel, Pasir Panjang Terminal and West Keppel
 Fairway
Coverage : Lat 01° 14'·50 N 01° 18'·55 N
 Long 103° 42'·70 E 103° 48'·60 E
Scale : 1: 10 000
Date Published : 11th April 2013
Size of Chart : 1094·3 x 746·3 mm
Descriptions : This new edition includes changes to depths from recent surveys
 in the vicinity of Pasir Panjang Terminal, West Keppel Fairway,
 East Jurong Channel, Damar Laut Causeway and Sakra Basin.

The existing chart of the same number published on 29th September 2011 is superseded.

Chart Number : 4036
Title : Port of Singapore
 Raffles Lighthouse To The Sisters
Coverage : Lat 01° 09'·40 N 01° 13'·47 N
 Long 103° 44'·20 E 103° 50'·13 E
Scale : 1: 10 000
Date Published : 25th April 2013
Size of Chart : 1100·0 x 750·1 mm
Descriptions : This new edition includes changes to depths from the latest
 surveys in the vicinity of Jong Fairway, west of Pulau Sebarok and
 Shell SBM.

The existing chart of the same number published on 28th April 2011 is superseded.

II NEW PUBLICATIONS

NEW EDITION DUAL BADGED CHART PUBLISHED ON 25TH APRIL 2013

Chart Number	:	4037
Title	:	Port of Singapore Keppel Harbour, Tanjong Pagar Terminal and Approaches
Coverage	:	Lat 01° 12'·52 N 01° 16'·59 N Long 103° 49'·40 E 103° 55'·34 E
Scale	:	1: 10 000
Date Published	:	25 th April 2013
Size of Chart	:	1101·8 x 750·1 mm
Descriptions	:	This new edition includes changes to depths from the latest surveys in the vicinity of East Keppel Fairway, Eastern Anchorage, approaches to Tanjong Pagar Terminal, Marina South Pier and approaches to Eastern Corridor.

The existing chart of the same number published on 28th April 2011 is superseded.

NEW EDITION DUAL BADGED CHART TO BE PUBLISHED ON 9TH MAY 2013

Chart Number	:	4040
Title	:	Singapore, Indonesia and Malaysia Tuas View to Pulau Sakijang Bendera (S. John's Island)
Coverage	:	Lat 01° 07'·40 N 01° 19'·60 N Long 103° 34'·10 E 103° 51'·90 E
Scale	:	1: 30 000
Date Published	:	9 th May 2013
Size of Chart	:	1100·6 x 749·5 mm
Descriptions	:	This new edition includes changes to depths from the latest surveys in the vicinity of Tuas Anchorages, East and West Jurong Channel, East Keppel, Jong and Temasek Fairways, approaches to Tanjong Pagar Terminal, Pasir Panjang Terminal and Pulau Sebarok.

The existing chart of the same number published on 3rd May 2012 will be superseded.





II NEW PUBLICATIONS

NEW EDITION DUAL BADGED CHART TO BE PUBLISHED ON 9TH MAY 2013

Chart Number	:	4041
Title	:	Singapore and Indonesia Pulau Sebarok to Changi
Coverage	:	Lat 01° 07'·40 N 01° 19'·60 N Long 103° 46'·90 E 104° 04'·70 E
Scale	:	1: 30 000
Date Published	:	9 th May 2013
Size of Chart	:	1100·6 x 749·5 mm
Descriptions	:	This new edition includes changes to depths from the latest surveys in the vicinity of East Keppel Fairway, Eastern Anchorages, East Keppel and Jong Fairways, Eastern Corridor and Marina South, approaches to Pulau Sebarok.

The existing chart of the same number published on 3rd May 2012 will be superseded.

II
NOTICES TO MARINERS AND CHART CORRECTIONS

GSP1/SP1	7 Ed 3/05/12 Last NM 43/2013	(HD/HY/G00100713)	*NM 50/2013
Insert	 Wk		1°23'·04N 103°39'·08E
		(HD/HE025/36 to 38/2013)	*NM 51/2013
Insert	 Fl.Y.4s NEA - CYR		1°15'·72N 103°44'·74E
	 Fl.Y.4s NEA - TUA		1°19'·22N 103°37'·47E
	 Fl.Y.4s NEA - LCK		1°27'·57N 103°43'·59E
<hr/>			
502	6 Ed 3/05/12 Last NM 44/2013	(MPA, Hydrographic Dept.)	*NM 52/2013
Delete	legend ' <i>Dredging Area (see Note)</i> ' at		1°14'·47N 103°55'·97E
<hr/>			

II
TEMPORARY AND PRELIMINARY NOTICES

(NM 53P/2013) INDONESIA - Submarine Fibre Optic Cables established at Batam Island - Riau Strait

1. The cables are laid joining the following positions :

Position	(Co-ordinates: WGS84)		Remarks
	Latitude (N)	Longitude (E)	
1	1° 10' .07	104° 08' .33	Tanjung Bemban, Batam
2	1° 10' .08	104° 09' .75	joining to
3	1° 10' .16	104° 09' .93	joining to
4	1° 10' .08	104° 10' .21	joining to
5	1° 10' .07	104° 11' .38	joining to
6	1° 09' .60	104° 12' .09	joining to
7	1° 08' .83	104° 12' .25	joining to
8	1° 06' .71	104° 12' .03	joining to
9	1° 05' .41	104° 11' .94	joining to
10	1° 04' .57	104° 11' .89	joining to
11	1° 02' .77	104° 12' .18	joining to
12	0° 59' .24	104° 12' .59	joining to
13	0° 58' .40	104° 13' .20	joining to
14	0° 54' .01	104° 19' .05	joining to
15	0° 47' .57	104° 21' .00	joining to
16	0° 45' .21	104° 23' .22	joining to
17	0° 40' .57	104° 24' .49	Chart border 202

2. Charts affected : 202 and 502..

Source : Indonesian Notices to Mariners No. 06/048(P)2013

III NAVIGATIONAL INFORMATION

*(NM 55/2013) SINGAPORE PORT MARINE NOTICES

The following Port Marine Notices have been shortlisted, as they would be of particular interest to mariners.

These notices can be accessed directly from MPA website:
www.mpa.gov.sg/sites/port_and_shipping/circulars_and_notices/port_marine_notices.page

PMN No.	Subject
41/2013	Dumping of excavated materials off Tuas View Extension.
42/2013	Dredging works at Benoi Basin.
43/2013	Dredging and construction works at Ayer Merbau Basin.
45/2013	Construction of floating sea barrier at Sentosa Cove.
48/2013	Construction of Changi East Finger Extension.
51/2013	Repair and restoration work to existing rock bund at Sentosa Cove.
52/2013	Construction works for Mega Shipyard at Tuas View extension.
54/2013	Reclamation of Tuas View Extension.

*(NM 56/2013) SINGAPOREAN PRINT-ON-DEMAND (POD) CHARTS

Print-On-Demand (POD) Charts are the most up-to-date paper nautical charts printed for navigational use. These nautical charts are produced in accordance with the International Hydrographic Organisation (IHO) chart specifications. These official nautical charts are continually updated to the latest Notices to Mariners before they are printed and sold to users.

These POD Charts include GSP1, SP1, 200, 201, 202, 500, 501, 502 and 503.

BENEFITS TO OUR CUSTOMERS

Convenience

Customers need not make numerous hand corrections to the nautical charts before use. In addition the updated POD Charts are more accurate and reliable than offset printed charts with hand corrections.

Clarity

Clarity in the presentation of updated information as compared to lithographic printed charts, where in some cases there are several overlapping corrections over existing information.

Coverage

The POD Charts cover the Malacca and Singapore Straits, from One Fathom Bank to Horsburgh Lighthouse.

III AMENDMENTS TO PUBLICATIONS

*(NM 57/2013) UPDATING OF PUBLICATION "SINGAPORE PORT INFORMATION 2012/2013"

1. Page 126

Insert the following:

CHARACTERISTICS OF AIDS TO NAVIGATION – WEST JOHOR STRAIT

Name of Beacon/Buoy	Position Lat. N Long. E Deg Min	Structure Colour & Shape	Light Characteristic	Owner
NEA-LCK Buoy	01°27.572' 103°43.593'	Yellow pillar with X topmark	Fl.Y.4s	NEA
NEA-TUA Buoy	01°19.217' 103°37.469'	Yellow pillar with X topmark	Fl.Y.4s	NEA

Page 137

CHARACTERISTICS OF AIDS TO NAVIGATION – SELAT PANDAN

Name of Beacon/Buoy	Position Lat. N Long. E Deg Min	Structure Colour & Shape	Light Characteristic	Owner
NEA-CYR Buoy	01°15.723' 103°44.739'	Yellow pillar with X topmark	Fl.Y.4s	NEA

Page 144

CHARACTERISTICS OF AIDS TO NAVIGATION – EASTERN ROADS

Name of Beacon/Buoy	Position Lat. N Long. E Deg Min	Structure Colour & Shape	Light Characteristic	Owner
NEA-ECP Buoy	01°18.392' 103°57.200'	Yellow pillar with X topmark	Fl.Y.4s	NEA

Page 147

CHARACTERISTICS OF AIDS TO NAVIGATION – SERANGOON HARBOUR

Name of Beacon/Buoy	Position Lat. N Long. E Deg Min	Structure Colour & Shape	Light Characteristic	Owner
NEA-SRG Buoy	01°23.195' 103°57.222'	Yellow pillar with X topmark	Fl.Y.4s	NEA

III
AMENDMENTS TO PUBLICATIONS

*(NM 57/2013) UPDATING OF PUBLICATION "SINGAPORE PORT INFORMATION 2012/2013"
(continued)

Page 149

Insert the following:

CHARACTERISTICS OF AIDS TO NAVIGATION – EAST JOHOR STRAIT

Name of Beacon/Buoy	Position Lat. N Long. E Deg Min	Structure Colour & Shape	Light Characteristic	Owner
NEA-SLT Buoy	01°26.900' 103°51.800'	Yellow pillar with X topmark	Fl.Y.4s	NEA

Page 151

CHARACTERISTICS OF AIDS TO NAVIGATION – PULAU TEKONG

Name of Beacon/Buoy	Position Lat. N Long. E Deg Min	Structure Colour & Shape	Light Characteristic	Owner
NEA-PTK Buoy	01°25.686' 104°00.659'	Yellow pillar with X topmark	Fl.Y.2s	NEA
NEA-CHG Buoy	01°20.706' 104°04.977'	Yellow pillar with X topmark	Fl.Y.4s	NEA

Source: HE025/26 to 30/2013, HE025/36 to 38/2013

IV
REPRINT OF RADIO NAVIGATIONAL WARNINGS

The following Radio Navigational Warnings have been shortlisted, as they would be of particular interest to mariners.

TT071

REPORT OF A CAPSIZED SAMPAN AT APPROXIMATE POSITION 01°07'·08N 103°41'·93E.

TT091

A HALF SUBMERGED FISHING BOAT WITH BOW ABOVE WATER IS SIGHTED OFF RACON D AT APPROXIMATE POSITION 01°02'·7N 103°39'·20E.

VESSELS TRANSITTING IN THE AREA TO EXERCISE CAUTION.

TT092

CABLESHIP NETWORKER IS CARRYING OUT SUBMARINE CABLE RECOVERY AND INSTALLATION FROM SINGAPORE TO BATAM FROM 08 APRIL 2013 TO 13 MAY 2013.

ALL VESSELS ARE ADVISED TO KEEP A SHARP LOOKOUT AND GIVE WIDE BERTH WHEN PASSING THROUGH THE OPERATION AREA.

TT173

VESSELS IN EAST JOHOR STRAIT ARE ADVISED TO NAVIGATE WITH CAUTION WHEN NEAR THE PROJECT AREAS OFF PULAU TEKONG, CHANGI AND MALANG PAPAN AS SHALLOW WATER AREAS EXIST. VESSELS ARE ADVISED TO KEEP LOOKOUT FOR TUGS AND BARGES NAVIGATING NEAR THE PROJECT AREAS AND PASSENGER FERRIES CROSSING BETWEEN CHANGI AND PULAU TEKONG AND VICINITY OF PASIR GUDANG.

TT961

VESSELS INTENDING TO CROSS THE TRAFFIC SEPARATION SCHEME(TSS) OR PRECAUTIONARY AREAS IN THE SINGAPORE STRAIT DURING THE HOURS OF DARKNESS ARE RECOMMENDED TO DISPLAY THE NIGHT SIGNALS CONSISTING OF 3 ALL-ROUND GREEN LIGHTS IN A VERTICAL LINE WITH EFFECT FROM 1ST JULY 2011 AT 010000UTC (0800SGT) AS DETAILED IN MARITIME AND PORT AUTHORITY OF SINGAPORE'S PORT MARINE CIRCULAR, 02 OF 2011 DATED 30 MAY 2011.

ISSUED BY SINGAPORE PORT OPERATIONS CONTROL CENTRE (as at 21st April 2013)

V
**EXTRACT OF ADMIRALTY NOTICES TO MARINERS
 FOR DUAL BADGED CHARTS**

These notices can also be accessed directly from UKHO Website:

www.ukho.gov.uk/ProductsandServices/MaritimeSafety/Pages/NMPublic.aspx

1106 MALAYSIA – Peninsular Malaysia, East Coast – Johor Southwards – Maritime limit. Works.

Source: Maritime and Port Authority of Singapore

Note: Former Notice 5459(T)/11 is cancelled.

Chart 4042 [previous update 5721/12] WGS84 DATUM

Insert	maritime limit, pecked line, joining:	(a)	1° 20'·55N., 104° 08'·13E. (shore)
		(b)	1° 19'·06N., 104° 07'·48E.
		(c)	1° 17'·86N., 104° 07'·32E.
		(d)	1° 19'·05N., 104° 14'·06E.
		(e)	1° 21'·37N., 104° 13'·86E. (shore)
	legend, Works in progress (2012) , within:		(a)-(e) above

Chart 4043 [previous update 5497/12] WGS84 DATUM

Insert	maritime limit, pecked line, joining:	(a)	1° 20'·55N., 104° 08'·13E. (shore)
		(b)	1° 19'·06N., 104° 07'·48E.
		(c)	1° 17'·86N., 104° 07'·32E.
		(d)	1° 18'·33N., 104° 10'·00E. (E border)
	legend, Works in progress (2012) , within:		(a)-(d) above

1552 SINGAPORE – Pulau Sudong North-eastwards, Pulau Bukom North-eastwards, Pulau Sebarok South-eastwards, Pulau Senang Eastwards, Changi East South-westwards and Pulau Tanjung Surat South-westwards – Buoyage. Light-beacons. Automatic Identification System. Wrecks. Depths. Dredged depth.

Source: Maritime and Port Authority of Singapore

Chart 4032 [previous update 718/13] WGS84 DATUM







Replace	depth <i>14₆</i> enclosed by 15m contour with depth <i>15₁</i>		1° 14'·283N., 103° 46'·110E.
	 <i>Menalung</i> with  FI.G.10s Menalung		1° 12'·796N., 103° 44'·088E.

Chart 4035 [previous update 1107/13] WGS84 DATUM

Insert	 FI.Y.4s Bukom ADCP1		1° 14'·345N., 103° 46'·262E.
	 FI.R.5s Sebarok		1° 11'·859N., 103° 48'·421E.
Amend	depth <i>14₈</i> dredged depth to, 16.5m (2013) , centred on:	(a)	1° 14'·436N., 103° 46'·130E. 1° 14'·142N., 103° 46'·222E.
Replace	 FI.R.5s7m10M Sebarok, associated circular red arc and Automatic Identification System, AIS, with  Sebarok (collapsed)		1° 11'·838N., 103° 48'·356E.
	depth <i>14₆</i> enclosed by 15m contour with depth <i>15₁</i>		1° 14'·283N., 103° 46'·110E.
Delete	depth <i>13₇</i> , adjacent to:	(a)	above
	depth <i>15₉</i>		1° 14'·428N., 103° 46'·327E.

V
**EXTRACT OF ADMIRALTY NOTICES TO MARINERS
 FOR DUAL BADGED CHARTS**

1552 SINGAPORE – Pulau Sudong North-eastwards, Pulau Bukom North-eastwards, Pulau Sebarok South-eastwards, Pulau Senang Eastwards, Changi East South-westwards and Pulau Tanjung Surat South-westwards – Buoyage. Light-beacons. Automatic Identification System. Wrecks. Depths. Dredged depth. (continued)

Source: Maritime and Port Authority of Singapore

Chart 4036 [*previous update 1107/13*] WGS84 DATUM

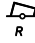



Insert	 Fl.R.5s Sebarok	1° 11'·859N., 103° 48'·421E.
	 Wk	1° 10'·101N., 103° 45'·596E.
Replace	 Fl.R.5s7m10M Sebarok and associated Automatic Identification System, AIS, with  Sebarok (collapsed)	1° 11'·838N., 103° 48'·356E.

Chart 4039 [*previous update 1107/13*] WGS84 DATUM


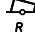











Insert	 Wk	1° 10'·10N., 103° 45'·60E.
	 Fl.R.5s Sebarok	1° 11'·86N., 103° 48'·42E.
Replace	 Menalung with  Fl.G.10s Menalung	1° 12'·79N., 103° 44'·05E.
	 Fl.R.5s7m10M Sebarok, associated circular red arc and Automatic Identification System, AIS, with  Sebarok (collapsed)	1° 11'·84N., 103° 48'·36E.

Chart 4040 [*previous update 1107/13*] WGS84 DATUM

Insert	 Fl.Y.4s Bukom ADCP1	1° 14'·35N., 103° 46'·26E.
	 Fl.R.5s Sebarok	1° 11'·86N., 103° 48'·42E.
	 Wk	1° 10'·10N., 103° 45'·60E.
	15m contour, joining:	(a) 1° 14'·31N., 103° 46'·01E. (existing contour)
		(b) 1° 14'·18N., 103° 46'·17E. (existing contour)
	depth 14₈	(c) 1° 14'·44N., 103° 46'·13E.
Replace	depth 14₆ with depth 15₁	1° 14'·28N., 103° 46'·11E.
	 Menalung with  Fl.G.10s Menalung	1° 12'·79N., 103° 44'·05E.
	 Fl.R.5s7m10M Sebarok, associated circular red arc and Automatic Identification System, AIS, with  Sebarok (collapsed)	1° 11'·84N., 103° 48'·36E.
Delete	former 15m contour, joining:	(a) above
		(b) above
	depth 13₆ , close SE of:	(c) above

V
**EXTRACT OF ADMIRALTY NOTICES TO MARINERS
 FOR DUAL BADGED CHARTS**

1552 SINGAPORE – Pulau Sudong North-eastwards, Pulau Bukom North-eastwards, Pulau Sebarok South-eastwards, Pulau Senang Eastwards, Changi East South-westwards and Pulau Tanjung Surat South-westwards – Buoyage. Light-beacons. Automatic Identification System. Wrecks. Depths. Dredged depth. (continued)

Source: Maritime and Port Authority of Singapore

Chart 4041 [*previous update 1443/13*] WGS84 DATUM





Insert	 Wk	1° 16'·31N., 103° 56'·66E.
	 Fl.R.5s Sebarok	1° 11'·86N., 103° 48'·42E.
Replace	 Fl.R.5s7m10M Sebarok, associated circular red arc and Automatic Identification System, AIS, with  Sebarok (collapsed)	1° 11'·84N., 103° 48'·36E.

Chart 4043 [*previous update 1108/13*] WGS84 DATUM

Insert	 Fl(2)R.5s10m5M Neville Rock	1° 26'·68N., 104° 02'·62E.
Delete	 Fl(2)R.5s Neville Rock	1° 26'·65N., 104° 02'·74E.

Chart 4044 [*previous update 1108/13*] WGS84 DATUM

Insert	 Fl(2)R.5s10m5M Neville Rock	1° 26'·68N., 104° 02'·62E.
Delete	 Fl(2)R.5s Neville Rock	1° 26'·65N., 104° 02'·74E.

Updated to Admiralty Notices to Mariners Edition No. 17 of 2013 dated 25th April 2013.

MPA ENC DISTRIBUTORS

ENC DISTRIBUTOR	ADDRESS	TELEPHONE/FAX NO./EMAIL/WEBSITE
ChartWorld GmbH ChartWorld Asia Pacific Pte Ltd.	Atlantic Haus, Zirkusweg 1 D-20359 Hamburg Germany Frontech Centre 07-01, 15 Jalan Kilang Barat, Singapore 159357	Tel. No.: +49 40 853 58 6942 Fax No.: +49 40 853 58 6949 Email: sales@chartworld.com Tel No.: +65 6513 3500 Website : http://www.chartworld.com http://www.ecdis-as-a-service.com
DPM (Singapore) Pte Ltd	2 Boon Leat Terrace, #05-02/03 Harbourside 2, Singapore 119844	Tel. No.: +65 6270 4060 Fax No.: +65 6276 3858 Email: sales@dpmsingapore.com.sg Website: http://www.dpmsingapore.com.sg
Maritime Information Systems (MARIS) Maritime Information Systems AS (MARIS)	52, Telok Blangah Road #01-06, Telok Blangah House, Singapore 058809 Danholmen 25, 3128 Notteroy, Norway	Tel. No.: +65 6276 1472 Fax No.: +65 6276 1473 Email: : support@maris.sg Website: http://www.maris.no Tel. No.: +47 33 30 42 50 Fax No.: +47 33 30 42 51 Email: : sales@maris.no Website: http://www.maris.no
Motion Smith	15 Jalan Kilang Barat #08-01/05 Frontech Centre, Singapore 159357	Tel. No.: +65 6220 5098 Fax No.: +65 6225 4902 Email: sales@motsmith.com Website: http://www.motsmith.com
Transas Marine Pacific Pte Ltd	Cyber Centre 16/18 Jalan Kilang Barat Off Jalan Bukit Merah Singapore 159358	Tel. No.: +65 6271 0200 Fax No.: +65 6271 7300 Email: navigation.asia@transas.com Website: http://www.transas.com
Japan Hydrographic Association (Electronic Charts Division)	Daiichi Sogo Bldg, 6F 1-6-6, Hanedakuko, Ota-ku Tokyo 144-0041, Japan	Tel. No.: +81 3 5708 7093 Fax No.: +81 3 5708 7094 Email: shimizu-6ki@jha.jp Website: http://www.jha.or.jp/en/jha/
Jeppesen Norway AS	P.O Box 212 , N-4371 Egersund, Norway	Tel No.: +47 51 46 4700 Fax No: +47 51 46 4701 Email: license.marine@jeppesen.com Website : http://www.jeppesen.com/marine
PRIMAR STAVANGER	Lervigsveien 36, P.O Box 60, N-4001 Stavanger, Norway	Tel. No.: +47 51 93 9500 Fax No.: +47 51 93 9501 Email: sales@ecc.no Website : http://www.primar.no
The United Kingdom Hydrographic Office	Admiralty Way, Taunton, Somerset, TA1 2DN United Kingdom	Tel. No.: +44 1823 33 7900 Fax No.: +44 1823 28 4077 Emails: ENCS.SalesReports@ukho.gov.uk Website: http://www.ukho.gov.uk

Chart Agents for the Maritime and Port Authority of Singapore
Nautical Charts and Publications

Please approach any of the appointed chart agents to purchase the Singapore Nautical Charts and Publications.

CHART AGENT	ADDRESS	TELEPHONE/FAX NO./EMAIL/WEBSITE
Cornes (Singapore) Pte Ltd	10 Anson Road #23-06/6A International Plaza Singapore 079903	Tel. No.: +65 6223 8320 Fax No.: +65 6223 8321 Email: sales9850@cspl.sg Website: http://www.cornes-charts.com
DPM (Singapore) Pte Ltd	2 Boon Leat Terrace, #05-02/03 Harbourside 2, Singapore 119844	Tel. No.: +65 6270 4060 Fax No.: +65 6276 3858 Email: sales@dpmsingapore.com.sg Website: http://www.dpmsingapore.com.sg
E.W. Liner Charts & Publications Pte Ltd	102F, Pasir Panjang Road, #08-01, Citilink Warehouse Complex, Singapore 118530	Tel. No.: +65 6323 0773 Fax No.: +65 6323 0775 Email: ewliner@singnet.com.sg Website: http://www.ewliner.com
Kelvin Hughes (Singapore) Pte Ltd	896 Dunearn Road #03-05 Sime Darby Centre Singapore 589472	Tel. No.: +65 6545 9880 Fax No.: +65 6545 8892 Email: leslie.khoo@kelvinhughes.com.sg Website: http://www.kelvinhughes.com
Motion Smith	15 Jalan Kilang Barat #08-01/05 Frontech Centre Singapore 159357	Tel. No.: +65 6220 5098 (After office hours:+65 8163 9993) Fax No.: +65 6225 4902 Email: sales@motsmith.com Website: http://www.motsmith.com

HYDROGRAPHIC NOTE - Instructions

1. Mariners are requested to notify the Chief Hydrographer, Maritime and Port Authority of Singapore, when new or suspected dangers to navigation are discovered, changes are observed in aids to navigation or where corrections to nautical publications may be necessary. Reports, which cannot be confirmed or are lacking in certain details should not be withheld.
2. Any ambiguities of time, positioning and depth should be stressed and any firm expectation of being able to check the information provided on a following voyage should be mentioned.
3. Mariners using satellite position fixing systems, eg. GPS, should provide details of equipment and datum used (where applicable). Where bearings (true or magnetic) are taken visually or by radar to fix a position, it should include more than two objects in order to provide a check on its accuracy. A position may also be defined by bearing and distance from a conspicuous object eg. beacon, lighthouse etc.
4. The note should include a tracing or a digital image of the chart used and the details should be clearly marked.
5. Echo sounders frequently register greater depths than the advertised maximum depth for the equipment, eg. a trace appearing at 50 metres may be in fact be 550 metres or even 1050 metres for equipment whose maximum depth is 500 metres. Erroneous depths caused by 2nd transmission error can usually be recognised by the following:
 - (a) the tracing being weaker than normal for the depth registered,
 - (b) the trace appearing to pass through the transmission line,
 - (c) the feathery nature of the trace.
6. Upon receipt of a hydrographic note, a Notice to Mariners may be issued. The sender's vessel or name is quoted as the source unless the same information is also received in foreign Notices to Mariners.
7. Reports of shoals, uncharted dangers and defects in aids to navigation may also be made to the appropriate Singapore Port Operations Control Centre on VHF Channels 10, 12, 14, 68 or 73.

HYDROGRAPHIC NOTE

To:

Chief Hydrographer
Maritime and Port Authority of Singapore
460 Alexandra Road PSA Building #20-00
Singapore 119963

Tel : (65) 6375 1227
Fax : (65) 6278 7646
Email : hydrographic@mpa.gov.sg

Sender's Contact Details :

Date :

Name of Vessel :

Address of Sender :

Tel : Fax :

Email :

Nature of Observation :

General Location :

Subject :

Position : Lat. Long.

Charts Used :

Date & Time of Observation :

Details :

.....

.....

Attachment :

Equipment Used :

Type of Position Fixing : GPS / DGPS Others :

Type of Echo Sounder :

Name and Signature :

Ship's/Company's Stamp :