



SINGAPOREAN NOTICES TO MARINERS

SECTION	CONTENT	Page
I	Index of Charts & Publications	1
II	New Publications	9
	Notices to Mariners and Chart Corrections	12
	Temporary and Preliminary Notices	16
III	Navigational Information	17
	Amendments to Publications	18
IV	Reprint of Radio Navigational Warnings	19
V	Extract of Admiralty Notices to Mariners for Dual-Badged Charts	20

The monthly Notices to Mariners contain corrective information affecting charts published by the Hydrographic Department, Maritime and Port Authority of Singapore. The information contained in these Notices should be updated on the charts affected. Notices under Section II apply only to the particular Singaporean Chart(s) indicated.

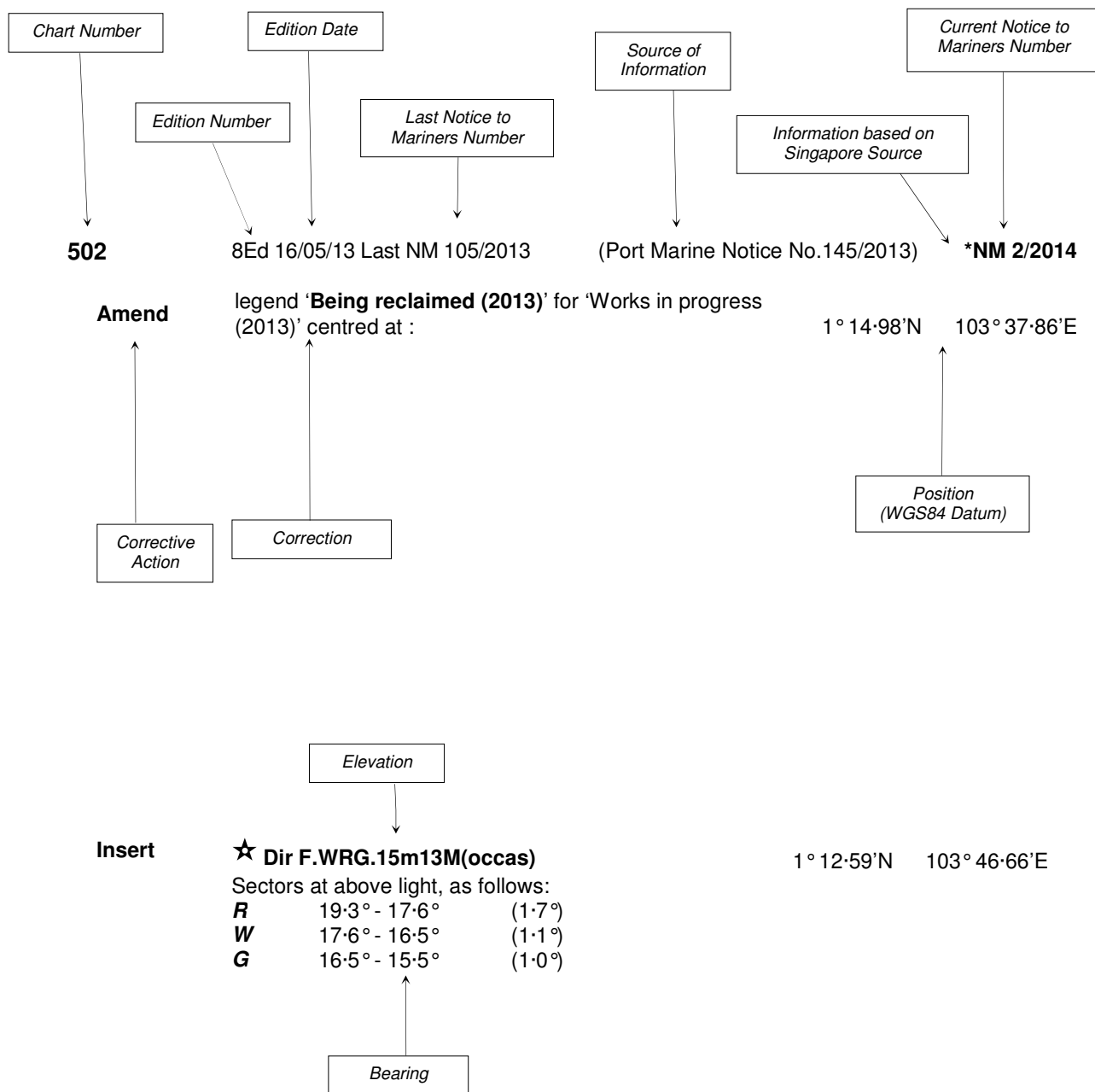
Mariners are requested to notify the Chief Hydrographer, Maritime and Port Authority of Singapore, immediately on the discovery of new dangers or suspected dangers to navigation and of changes or defects in aids to navigation. See Hydrographic Note on back page.

The monthly Singaporean Notices to Mariners can be accessed directly from the MPA website:
[www.mpa.gov.sg/sites/port_and_shipping/circulars_and_notices/singapore_notices_to_mariners\(ntm\).page](http://www.mpa.gov.sg/sites/port_and_shipping/circulars_and_notices/singapore_notices_to_mariners(ntm).page)

Hydrographic Department
Maritime and Port Authority of Singapore
460 Alexandra Road
#20-00 PSA Building
Singapore 119963
Tel: (65) 6375 1227
Fax: (65) 6278 7646
Email: hydrographic@mpa.gov.sg

EXPLANATION OF FORMAT

The elements of a typical chart correction are explained below.



Notes:

- a) Notice to Mariners number followed by:
 - T** indicates a Temporary Notice (eg. *NM 3T/2014).
 - P** indicates a Preliminary Notice (eg. *NM 4P/2014).
- b) Bearings are true reckoned clockwise from 000° to 359°; those relating to lights are from seaward.
- c) Heights and elevations are above Mean High Water Springs.

I
INDEX OF CHARTS AND PUBLICATIONS

INDEX OF AFFECTED CHARTS

DESCRIPTION	NOTICE NO.	PAGE NO.
Index of Singaporean Charts	-	3
Index of Dual-Badged Charts	-	5
Index of Singapore Electronic Navigational Chart (ENC)	-	8
New Edition Singaporean Charts	-	9
New Edition Dual-Badged Charts	-	10, 11
Singaporean Chart GSP1/SP1	*34, *35, *36, *37, 38, 39	12, 13
Singaporean Chart 202	39, 40	13
Singaporean Chart 500	39	13,14
Singaporean Chart 501	39	14, 15
Singaporean Chart 502	*37, 40	15
Singaporean Chart 503	40	15
Temporary and Preliminary Notices	-	16
Singapore Port Marine Notices	*41	17
Singaporean Print-On-Demand (POD) Charts	*42	17
Amendments to Publications	*43	18
Reprint of Radio Navigational Warnings	-	19
Extract of Admiralty Notices to Mariners for Dual-Badged Charts	-	20
Singapore Electronic Navigational Chart (ENC) Distributors	-	22
Chart Agents for the Maritime and Port Authority of Singapore Nautical Charts and Publications	-	23

*Denotes information are based on Singaporean source.

I
INDEX OF CHARTS AND PUBLICATIONS

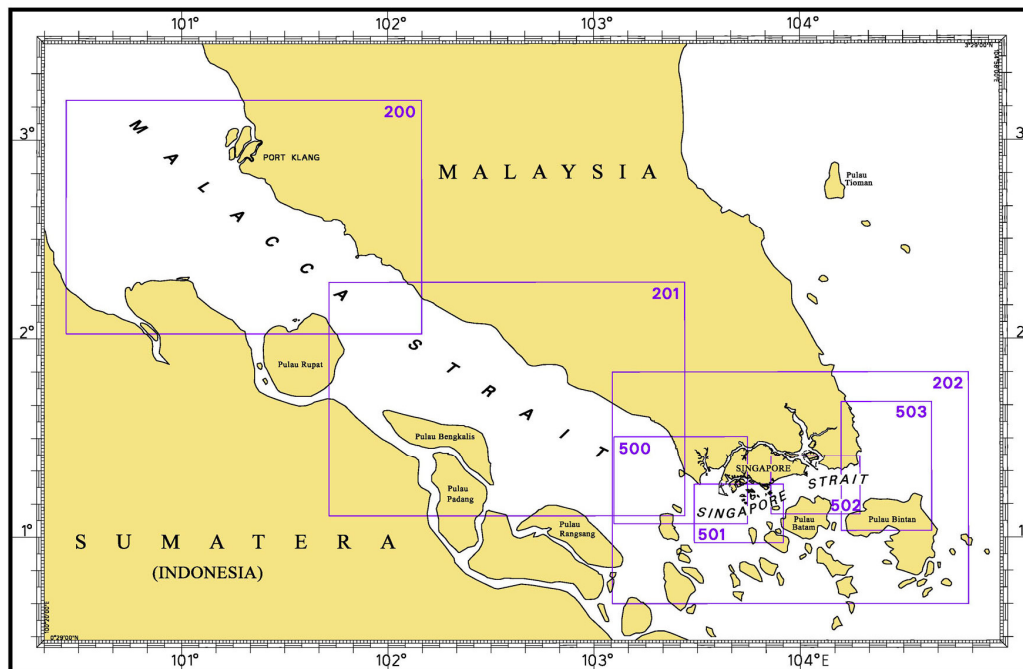
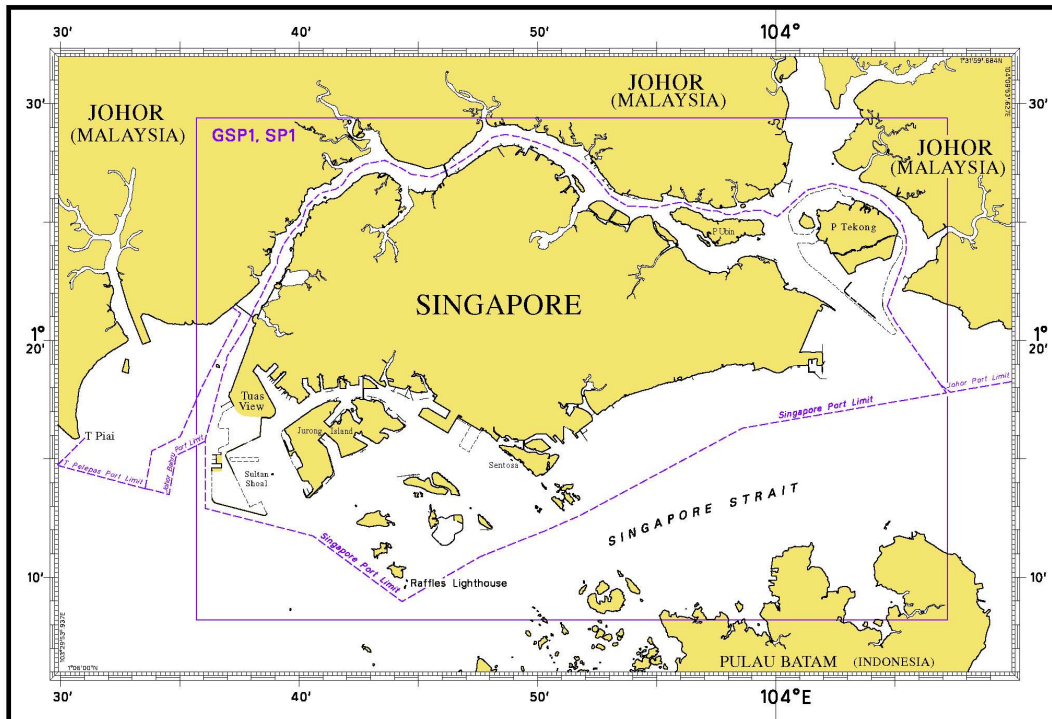
INDEX OF NOTICES

NOTICE NO.	DESCRIPTION	PAGE NO.
-	Index of Singaporean Charts	3
-	Index of Dual-Badged Charts	5
-	Index of Singapore Electronic Navigational Chart (ENC)	8
-	New Edition Singaporean Charts	9
-	New Edition Dual-Badged Charts	10, 11
*34, *35, *36, *37 38, 39	Singaporean Chart GSP1/SP1	12, 13
39, 40	Singaporean Chart 202	13
39	Singaporean Chart 500	13, 14
39	Singaporean Chart 501	14, 15
*37, 40	Singaporean Chart 502	15
40	Singaporean Chart 503	15
-	Temporary and Preliminary Notices	16
*41	Singapore Port Marine Notices	17
*42	Singaporean Print-On-Demand (POD) Charts	17
*43	Amendments to Publications	18
-	Reprint of Radio Navigational Warnings	19
-	Extract of Admiralty Notices to Mariners for Dual-Badged Charts	20
-	Singapore Electronic Navigational Chart (ENC) Distributors	22
-	Chart Agents for the Maritime and Port Authority of Singapore Nautical Charts and Publications	23

* Denotes information are based on Singaporean source.

I INDEX OF CHARTS AND PUBLICATIONS

INDEX OF SINGAPOREAN CHARTS



Notes:
 Updated Singaporean Charts are available through our Print-On-Demand (POD) Chart Service. For more information, refer to Section III – Navigational Information. These charts can be purchased from our authorised Chart Agents.

I
INDEX OF CHARTS AND PUBLICATIONS

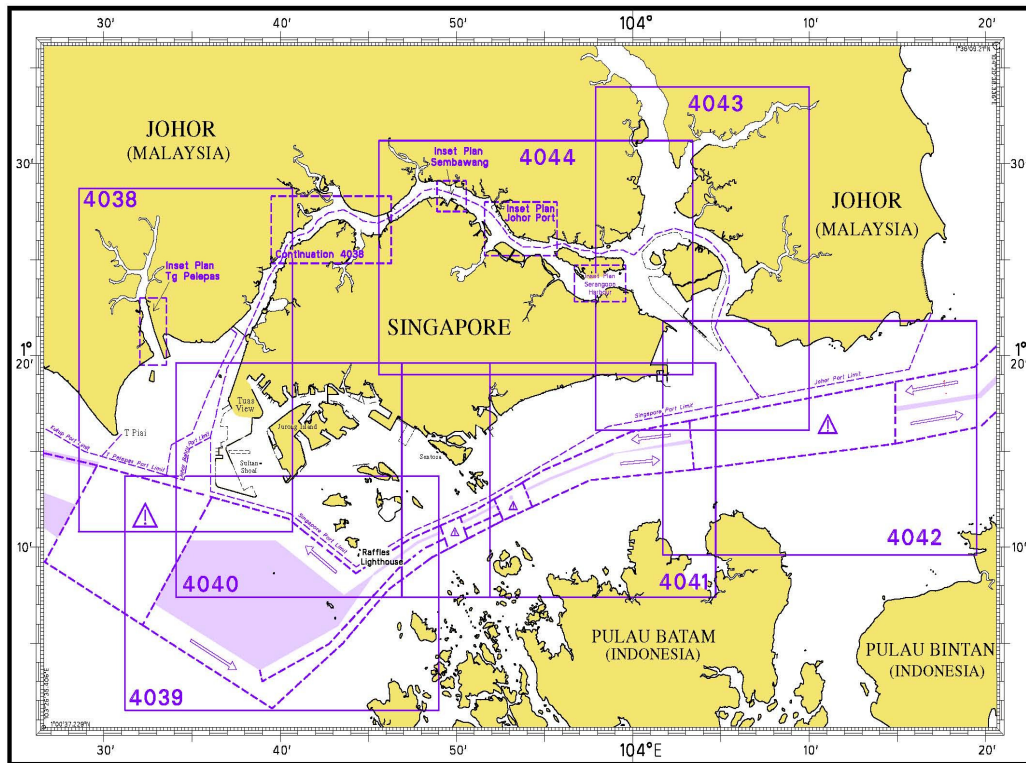
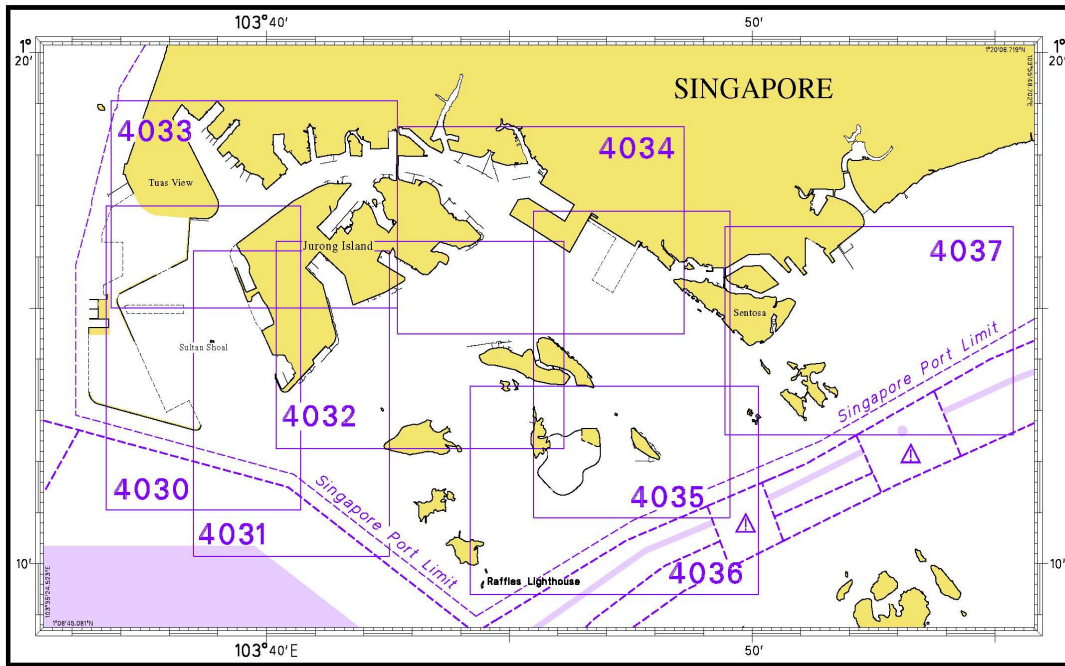
SINGAPOREAN CHARTS

Chart No.	Chart Title	Scale 1:	Date Published of Latest Edition
GSP1	Anchorage and Aids to Navigation (with Area Reference)	60 000	15/04/2014
SP1	Anchorage and Aids to Navigation	60 000	15/04/2014
200	Malacca Strait - Port Klang to Tanjung Keling	200 000	22/09/2011
201	Malacca Strait - Tanjung Keling to Western Entrance of Singapore Strait	200 000	07/10/2010
202	Singapore Strait	200 000	26/09/2013
500	Malacca and Singapore Straits – Pulau Pisang to Raffles Lighthouse	75 000	26/09/2013
501	Singapore Strait – Western Part	50 000	03/05/2012
502	Singapore Strait - Eastern Part	50 000	03/05/2012
503	South China Sea - Eastern Approaches and Entrance to Singapore Strait	75 000	01/04/2010
-	Charts for Small Craft – Singapore Strait & Adjacent Waterways	10 000 to 200 000	02/01/2014
-	* Symbols Abbreviations Terms and S-57 Objects used on Singapore Nautical and Electronic Navigational Charts.	-	28/07/2011

* Available at MPA website http://www.mpa.gov.sg/sites/global_navigation/publications/chart1.page

I INDEX OF CHARTS AND PUBLICATIONS

INDEX OF DUAL-BADGED CHARTS



I
INDEX OF CHARTS AND PUBLICATIONS

DUAL- BADGED CHARTS

Chart No.	Chart Title	Scale 1:	Date Published of Latest Edition
4030	Port of Singapore West Jurong Anchorages and Temasek Fairway	10 000	03/05/2012
4031	Port of Singapore Western Approaches to Jurong Island	10 000	03/05/2012
4032	Port of Singapore Sinki Fairway	10 000	03/05/2012
4033	Port of Singapore Tuas Bay, West Jurong Channel and Pesek Basin	10 000	03/05/2012
4034	Port of Singapore East Jurong Channel, Pasir Panjang Terminal and West Keppel Fairway	10 000	11/04/2013
4035	Port of Singapore Western Anchorages, Jong Fairway and Cruise Bay	10 000	26/09/2013
4036	Port of Singapore Raffles Lighthouse to The Sisters	10 000	25/04/2013
4037	Port of Singapore Keppel Harbour, Tanjong Pagar Terminal and Approaches	10 000	25/04/2013
4038	Malaysia and Singapore Johor Strait – Western Part	30 000	26/09/2013
4039	Indonesia, Singapore and Malaysia Western Approaches to Main Strait	30 000	24/04/2014
4040	Singapore, Indonesia and Malaysia, Tuas View to Pulau Sakijang Bendera (S. John's Island)	30 000	09/05/2013
4041	Singapore and Indonesia, Pulau Sebarok to Changi	30 000	09/05/2013

I
INDEX OF CHARTS AND PUBLICATIONS

DUAL- BADGED CHARTS

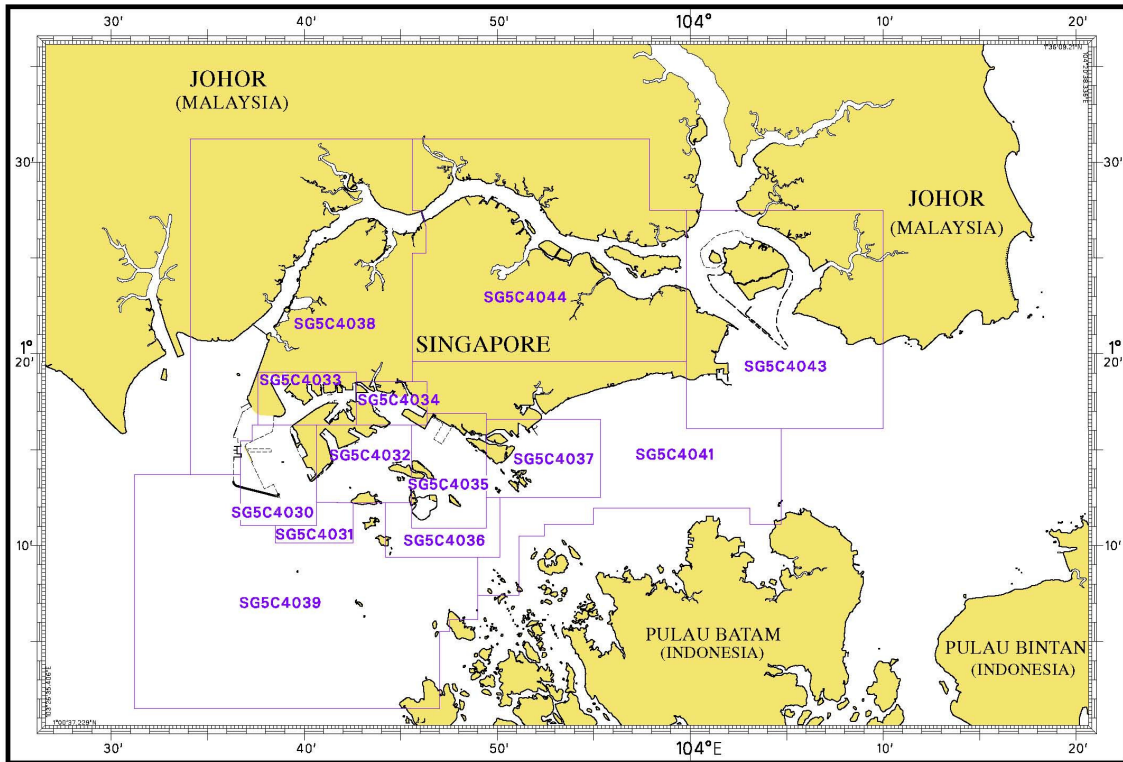
Chart No.	Chart Title	Scale 1:	Date Published of Latest Edition
4042	Indonesia, Malaysia and Singapore, Changi to Pulau Mungging and Tanjung Buntan to Tanjung Tondang	30 000	24/04/2014
4043	Malaysia and Singapore Kuala Johor and Sungai Johor	30 000	29/08/2013
4044	Singapore and Malaysia Johor Strait - Eastern Part	30 000	29/08/2013

SINGAPOREAN PUBLICATIONS

Item	Title
1	Singapore Tide Tables Year 2014
2	Singapore Port Information 2014/2015

I INDEX OF CHARTS AND PUBLICATIONS

INDEX OF SINGAPORE ELECTRONIC NAVIGATIONAL CHART (ENC)



SINGAPORE ELECTRONIC NAVIGATIONAL CHART (ENC)

ENC Name	ENC Coverage	ENC Edition
SG5C4030	West Jurong Anchorages and Temasek Fairway	5 th Edition (3/05/2012)
SG5C4031	Western Approaches to Jurong Island	5 th Edition (3/05/2012)
SG5C4032	Sinki Fairway	7 th Edition (3/05/2012)
SG5C4033	Tuas Bay, West Jurong Channel and Pesek Basin	5 th Edition (3/05/2012)
SG5C4034	East Jurong Channel, Pasir Panjang Terminal and West Keppel Fairway	11 th Edition (28/06/2013)
SG5C4035	Western Anchorages, Jong Fairway and Cruise Bay	14 th Edition (26/09/2013)
SG5C4036	Raffles Lighthouse to The Sisters	6 th Edition (3/05/2012)
SG5C4037	Keppel Harbour, Tanjong Pagar Terminal and Approaches	7 th Edition (25/04/2013)
SG5C4038	Johor Strait – Western Part	6 th Edition (26/09/2013)
SG5C4039	Western Approaches to Main Strait	6 th Edition (24/04/2014)
SG5C4041	Pulau Sebarok to Changi	7 th Edition (9/05/2013)
SG5C4043	Kuala Johor and Sungai Johor	9 th Edition (29/08/2013)
SG5C4044	Johor Strait – Eastern Part	9 th Edition (29/08/2013)

II NEW PUBLICATIONS

NEW EDITION SINGAPOREAN CHARTS PUBLISHED ON 15TH APRIL 2014

Chart Number : *GSP1
Title : Anchorages and Aids to Navigation
Coverage : Lat 01° 08' 20 N 01° 29' 40 N
 Long 103° 35' 70 E 104° 07' 20 E
Scale : 1: 60 000
Date Published : 15th April 2014
Size of Chart : 973·9 x 651·2 mm
Descriptions : This new edition includes changes to aids to navigation, working areas, submarine cables, depth contours from the latest surveys in the vicinity of West of Tuas reclamation, Tuas Anchorages, Temasek Fairway, West Jurong Channel, Pesek and Banyan Basins, Pasir Panjang, Approaches to Pulau Sebarok, South of St John Island, Tanjong Pagar Terminal, Keppel Harbour, Tanah Merah, Pulau Tekong and Sembawang Shipyard.

The existing chart of the same number published on 16th May 2013 is superseded.

* This chart is provided with a grid area reference.

Chart Number : SP1
Title : Anchorages and Aids to Navigation
Coverage : Lat 01° 08' 20 N 01° 29' 40 N
 Long 103° 35' 70 E 104° 07' 20 E
Scale : 1: 60 000
Date Published : 15th April 2014
Size of Chart : 973·9 x 651·2 mm
Descriptions : This new edition includes changes to aids to navigation, working areas, submarine cables, depth contours from the latest surveys in the vicinity of West of Tuas reclamation, Tuas Anchorages, Temasek Fairway, West Jurong Channel, Pesek and Banyan Basins, Pasir Panjang, Approaches to Pulau Sebarok, South of St John Island, Tanjong Pagar Terminal, Keppel Harbour, Tanah Merah, Pulau Tekong and Sembawang Shipyard.

The existing chart of the same number published on 16th May 2013 is superseded.

II NEW PUBLICATIONS

NEW EDITION DUAL- BADGED CHARTS PUBLISHED ON 24TH APRIL 2014

Chart Number : 4039
Title : Indonesia, Singapore and Malaysia
 Western Approaches To Main Strait
Coverage : Lat 01° 01'·50 N 01° 13'·70 N
 Long 103° 31'·20 E 103° 49'·00 E
Scale : 1: 30 000
Date Published : 24th April 2014
Size of Chart : 1100·7 x 749·5 mm
Descriptions : This new edition includes changes to anchorages, submarine cables and depths from the latest surveys covering Temasek Fairway and Jong Fairway.

The existing chart of the same number published on 3rd May 2012 is superseded.

Chart Number : 4042
Title : Indonesia, Singapore and Malaysia
 Changi To Pulau Mungging and Tanjung Buntan To
 Tanjung Tondang
Coverage : Lat 01° 09'·55 N 01° 21'·75 N
 Long 104° 01'·70 E 104° 19'·50 E
Scale : 1: 30 000
Date Published : 24th April 2014
Size of Chart : 1100·6 x 749·5 mm
Descriptions : This new edition includes changes to submarine cables and depths from the latest surveys covering Kuala Johor.

The existing chart of the same number published on 16th August 2012 is superseded.

NEW EDITION DUAL- BADGED CHARTS TO BE PUBLISHED ON 15TH MAY 2014

Chart Number : 4030
Title : Port of Singapore
 West Jurong Anchorages and Temasek Fairway
Coverage : Lat 01° 11'·05 N 01° 17'·00 N
 Long 103° 36'·70 E 103° 40'·70 E
Scale : 1: 10 000
Date Published : 15th May 2014
Size of Chart : 742·0 x 1096·5 mm
Descriptions : This new edition includes changes to depths and topographic details from the latest surveys covering Temasek Fairway, West Jurong Anchorages, West Jurong Channel, west of Jurong Island and area south of Tuas View Extension.

The existing chart of the same number published on 3rd May 2012 will be superseded.

II NEW PUBLICATIONS

NEW EDITION DUAL- BADGED CHARTS TO BE PUBLISHED ON 15TH MAY 2014

Chart Number : 4031
Title : Port of Singapore
 : Western Approaches to Jurong Island
Coverage : Lat 01° 10'·15 N 01° 16'·12 N
 : Long 103° 38'·50 E 103° 42'·53 E
Scale : 1: 10 000
Date Published : 15th May 2014
Size of Chart : 747·5 x 1100·2 mm
Descriptions : This new edition includes changes to depths and topographic details from the latest surveys covering Temasek Fairway, Jurong Anchorages, Banyan Basin and portion of Sinki Fairway.

The existing chart of the same number published on 3rd May 2012 will be superseded.


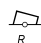







Chart Number : 4032
Title : Port of Singapore
 : Sinki Fairway
Coverage : Lat 01° 12'·25 N 01° 16'·30 N
 : Long 103° 40'·20 E 103° 46'·13 E
Scale : 1: 10 000
Date Published : 15th May 2014
Size of Chart : 1100·0 x 746·4 mm
Descriptions : This new edition includes changes to depths from the latest surveys covering north of Pulau Bukom, Banyan Basin, East Jurong Channel, portion of West Keppel Fairway, portion of Selat Sinki and north of Pulau Hantu.

The existing chart of the same number published on 3rd May 2012 will be superseded.

Chart Number : 4033
Title : Port of Singapore
 : Tuas Bay, West Jurong Channel and Pesek Basin
Coverage : Lat 01° 15'·00 N 01° 19'·05 N
 : Long 103° 36'·80 E 103° 42'·70 E
Scale : 1: 10 000
Date Published : 15th May 2014
Size of Chart : 1094·4 x 746·4 mm
Descriptions : This new edition includes changes to depths and topographic details from the latest surveys covering Temasek Fairway, West Jurong Channel, Benoi Basin, Pesek Basin and Tuas View Extension.

The existing chart of the same number published on 3rd May 2012 will be superseded.

II NOTICES TO MARINERS AND CHART CORRECTIONS

GSP1/SP1	9 Ed 15/04/14 (New Edition)		*NM 34/2014
Insert	legend 'collapsed' at	1° 13·39'N	103° 46·78'E
			*NM 35/2014
Insert	 Fl.Y.8s	1° 11·43'N	103° 45·68'E
			*NM 36/2014
Delete	 Fl(2)R.10s Terumbu	1° 11·26'N	103° 46·40'E
			*NM 37/2014
Delete	 Fl.Y.2s TK-MB1	1° 20·27'N	104° 04·73'E
	 Fl.Y.2s TK-MB2	1° 20·39'N	104° 04·59'E
	 Fl.Y.4s TK-MB3	1° 22·15'N	104° 02·52'E
	 Fl.Y.4s TK-MB4	1° 22·27'N	104° 02·38'E
	 Fl.Y.6s TK-MB5	1° 22·44'N	104° 02·17'E
	 Fl.Y.6s TK-MB6	1° 22·57'N	104° 02·03'E
			(Royal Malaysian Navy Notice No.1/29/2014) NM 38/2014
Insert	port limit, dashed line, joining:	1° 17·72'N	104° 07·20'E
		(chart border)	
		1° 18·13'N	104° 06·90'E
Delete	former port limit, dashed line, joining:	1° 17·91'N	104° 07·20'E
		(chart border)	
		1° 18·13'N	104° 06·90'E
			(Admiralty Notice No.13/1303P/2014) NM 39/2014
Insert	anchorage areas bounded by the following positions:	1° 10·30'N	103° 35·70'E
		(chart border)	
		1° 10·30'N	103° 38·70'E
		1° 09·17'N	103° 38·70'E
		1° 09·55'N	103° 35·70'E
		(chart border)	
	anchorage symbol  centred at:	1° 09·87'N	103° 37·33'E
Insert	anchorage areas bounded by the following positions:	1° 09·55'N	103° 35·70'E
		(chart border)	
		1° 09·45'N	103° 36·50'E
		1° 08·20'N	103° 35·76'E
		(chart border)	

II
NOTICES TO MARINERS AND CHART CORRECTIONS


Insert legend anchorage, **Zone A**  centred at: 1° 09·08'N 103° 35·97'E

202 7 Ed 26/09/13 Last NM 29/2014 (Admiralty Notice No.13/1303P/2014) **NM 39/2014**


Insert anchorage areas bounded by the following positions: 1° 10·30'N 103° 35·30'E
1° 10·30'N 103° 38·70'E
1° 09·17'N 103° 38·70'E
1° 09·60'N 103° 35·30'E

anchorage symbol  centred at: 1° 09·90'N 103° 37·10'E

Insert anchorage areas bounded by the following positions: 1° 09·55'N 103° 34·90'E
1° 09·60'N 103° 35·30'E
1° 09·45'N 103° 36·50'E
1° 06·17'N 103° 34·55'E
1° 07·07'N 103° 33·03'E

legend anchorage, **Zone A**  centred at: 1° 08·11'N 103° 34·67'E

Insert anchorage areas bounded by the following positions: 1° 06·30'N 103° 42·00'E
1° 06·55'N 103° 42·50'E
1° 05·80'N 103° 42·80'E
1° 04·90'N 103° 40·90'E
1° 05·38'N 103° 40·63'E
1° 05·49'N 103° 40·84'E
1° 07·67'N 103° 39·53'E
1° 08·28'N 103° 40·72'E
1° 06·30'N 103° 42·00'E


legend anchorage, **Zone B**  centred at: 1° 07·20'N 103° 40·68'E

(Admiralty Notice No.16/1633/2014) **NM 40/2014**



Insert  (a) 1° 09·74'N 104° 13·13'E
 **Fl.R.4s**, close N of: (a) above



500 7 Ed 26/09/13 Last NM 3/2014 (Admiralty Notice No.13/1303P/2014) **NM 39/2014**

Insert anchorage areas bounded by the following positions: 1° 10·30'N 103° 35·30'E
1° 10·30'N 103° 38·70'E
1° 09·17'N 103° 38·70'E
1° 09·60'N 103° 35·30'E

Insert anchorage symbol  centred at: 1° 09·90'N 103° 37·10'E

II NOTICES TO MARINERS AND CHART CORRECTIONS

Insert	anchorage areas bounded by the following positions:	1° 09·55'N	103° 34·90'E
		1° 09·60'N	103° 35·30'E
		1° 09·45'N	103° 36·50'E
		1° 06·17'N	103° 34·55'E
		1° 07·07'N	103° 33·03'E
		legend anchorage, Zone A  centred at:	1° 08·11'N
Insert	anchorage areas bounded by the following positions:	1° 06·30'N	103° 42·00'E
		1° 06·55'N	103° 42·50'E
		1° 05·80'N	103° 42·80'E
		1° 04·90'N	103° 40·90'E
		1° 05·38'N	103° 40·63'E
		1° 05·49'N	103° 40·84'E
		1° 07·67'N	103° 39·53'E
		1° 08·28'N	103° 40·72'E
		1° 06·30'N	103° 42·00'E
		legend anchorage, Zone B  centred at:	1° 07·20'N

501	6 Ed 3/05/12 Last NM 28/2014	(Admiralty Notice No.13/1303P/2014)	NM 39/2014
Insert	anchorage areas bounded by the following positions:	1° 10·30'N	103° 35·30'E
		1° 10·30'N	103° 38·70'E
		1° 09·17'N	103° 38·70'E
		1° 09·60'N	103° 35·30'E
		anchorage symbol  centred at:	1° 09·90'N
Insert	anchorage areas bounded by the following positions:	1° 09·55'N	103° 34·90'E
		1° 09·60'N	103° 35·30'E
		1° 09·45'N	103° 36·50'E
		1° 06·17'N	103° 34·55'E
		1° 07·07'N	103° 33·03'E
		legend anchorage, Zone A  centred at:	1° 08·11'N
Insert	anchorage areas bounded by the following positions:	1° 06·30'N	103° 42·00'E
		1° 06·55'N	103° 42·50'E
		1° 05·80'N	103° 42·80'E
		1° 04·90'N	103° 40·90'E
		1° 05·38'N	103° 40·63'E
		1° 05·49'N	103° 40·84'E
		1° 07·67'N	103° 39·53'E
		1° 08·28'N	103° 40·72'E
		1° 06·30'N	103° 42·00'E

II
NOTICES TO MARINERS AND CHART CORRECTIONS

Insert legend anchorage, **Zone B**  centred at: 1° 07·20'N 103° 40·68'E

502 6 Ed 3/05/12 Last NM 30/2014 ***NM 37/2014**

Delete  *Fl.Y.2s TK-MB1* 1° 20·27'N 104° 04·73'E


 *Fl.Y.2s TK-MB2* 1° 20·39'N 104° 04·59'E

(Admiralty Notice No.16/1633/2014) **NM 40/2014**

Insert  (a) 1° 09·74'N 104° 13·13'E

 **Fl.R.4s**, close N of: (a) above

503 4 Ed 1/04/10 Last NM 29/2014 (Admiralty Notice No.16/1633/2014) **NM 40/2014**

Insert  (a) 1° 09·74'N 104° 13·13'E

 **Fl.R.4s**, close N of: (b) above

II
TEMPORARY AND PRELIMINARY NOTICES

NIL

III NAVIGATIONAL INFORMATION

***(NM 41/2014) SINGAPORE PORT MARINE NOTICES**

The following Port Marine Notices have been shortlisted, as they would be of particular interest to mariners.

These notices can be accessed directly from MPA website:
www.mpa.gov.sg/sites/port_and_shipping/circulars_and_notices/port_marine_notices.page

PMN No.	Subject
44/2014	Construction of a jetty at Sungei Jurong.
47/2014	Soil investigation work, off West Jurong Channel.
50/2014	Construction of Changi East Finger Extension.
51/2014	Soil investigation work off West Jurong Channel.
55/2014	Soil investigation work for proposed Tuas Terminal Phase 1.

***(NM 42/2014) SINGAPOREAN PRINT-ON-DEMAND (POD) CHARTS**

Print-On-Demand (POD) Charts are the most up-to-date paper nautical charts printed for navigational use. These nautical charts are produced in accordance with the International Hydrographic Organisation (IHO) chart specifications. These official nautical charts are continually updated to the latest Notices to Mariners before they are printed and sold to users.

These POD Charts include 200, 201, 202, 500, 501, 502 and 503.

BENEFITS TO OUR CUSTOMERS

Convenience

Customers need not make numerous hand corrections to the nautical charts before use. In addition the updated POD Charts are more accurate and reliable than offset printed charts with hand corrections.

Clarity

Clarity in the presentation of updated information as compared to lithographic printed charts, where in some cases there are several overlapping corrections over existing information.

Coverage

The POD Charts cover the Malacca and Singapore Straits, from One Fathom Bank to Horsburgh Lighthouse.

III
AMENDMENTS TO PUBLICATIONS

***(NM 43/2014) UPDATING OF PUBLICATION "SINGAPORE PORT INFORMATION 2014/2015"**

1. Page 110

DEPTHS OF NAVIGATIONAL CHANNELS AND FAIRWAYS

Amend the following:

LOCATIONS	DEPTHS(m)	REMARKS
East Johor Strait – Sembawang Shipyard to Ordnance Reach	9.2m	

2. Page 165 – Item 5

WHARVES AND BERTHS

PASIR PANJANG TERMINAL (PSA SINGAPORE TERMINALS)(1°17.2'N, 103°46.1'E)

Insert the following:

Berth	Length of Berth	Depth Alongside (Year Surveyed)	Controlling Depth In Approaches
P31	360m	18.0m (2014)	-
P32	360m	18.0m (2014)	-

3. Page 170 – Item 17a

**JURONG ISLAND – (TEMASEK FAIRWAY) (JURONG AROMATICS CORPORATION)
(1°15.6'N, 103°39.5'E)**

Amend the following:

Berth	Length of Berth	Depth Alongside (Year Surveyed)	Controlling Depth In Approaches
1	320m	17.0m (2013)	15.3m
2	242m	17.0m (2014)	15.3m
3	190m	17.0m (2013)	15.3m

4. Page 176 – Item 33

SHELL PANDAN TANKER JETTY (SHELL REFINERY)(1°17.4'N, 103°44.7'E)

Amend the following:

Berth	Length of Berth	Depth Alongside (Year Surveyed)	Controlling Depth In Approaches
Shell Tanker Jetty	205m	10.3m (2013)	10.3m

IV
REPRINT OF RADIO NAVIGATIONAL WARNINGS

The following Radio Navigational Warnings have been shortlisted, as they would be of particular interest to mariners.

TT026 (AMENDED ON 16 MAR 14)

TUAS RECLAMATION WORKING AREA AT WESTERN PART OF SINGAPORE PORT ARE MARKED BY FLWG BUOYS (REF. PMN: 54/2013, 30/2014).

TT164 (POSN AMENDED ON 241000Z)

BATU BERHANTI ISOLATED DANGER BUOY REPORTED OUT OF POSITION AND DRIFTING AT POSITION LAT 01°12.17'N LONG 103°52.70'E.

ALL VESSELS APPROACHING THE VICINITY ARE ADVISED TO NAVIGATE WITH CAUTION.

TT173

VESSELS IN EAST JOHOR STRAIT ARE ADVISED TO NAVIGATE WITH CAUTION WHEN NEAR THE PROJECT AREAS OFF PULAU TEKONG, CHANGI AND MALANG PAPAN AS SHALLOW WATER AREAS EXIST. VESSELS ARE ADVISED TO KEEP LOOKOUT FOR TUGS AND BARGES NAVIGATING NEAR THE PROJECT AREAS AND PASSENGER FERRIES CROSSING BETWEEN CHANGI AND PULAU TEKONG AND VICINITY OF PASIR GUDANG.

TT961

VESSELS INTENDING TO CROSS THE TRAFFIC SEPARATION SCHEME(TSS) OR PRECAUTIONARY AREAS IN THE SINGAPORE STRAIT DURING THE HOURS OF DARKNESS ARE RECOMMENDED TO DISPLAY THE NIGHT SIGNALS CONSISTING OF 3 ALL-ROUND GREEN LIGHTS IN A VERTICAL LINE WITH EFFECT FROM 1ST JULY 2011 AT 010000UTC (0800SGT) AS DETAILED IN MARITIME AND PORT AUTHORITY OF SINGAPORE'S PORT MARINE CIRCULAR, 02 OF 2011 DATED 30 MAY 2011.

ISSUED BY SINGAPORE PORT OPERATIONS CONTROL CENTRE (as at 27th April 2014)

V
**EXTRACT OF ADMIRALTY NOTICES TO MARINERS
 FOR DUAL-BADGED CHARTS**

These notices can also be accessed directly from UKHO Website:
www.ukho.gov.uk/ProductsandServices/MaritimeSafety/Pages/NMPublic.aspx

1488 SINGAPORE – Jurong Island W, Temasek Fairway W and Tuas View W – Obstruction. Wreck. Buoyage. Light.

Light List Vol. F, 2013/14, 1679.5
 Source: Maritime and Port Authority of Singapore

Chart 4030 [previous update 1306/14] WGS84 DATUM

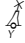
Insert	 Obstn	1° 14'·477N., 103° 39'·555E.
Delete	 <i>Fl.Y.4s APRJ1-B4</i>	1° 14'·935N., 103° 39'·814E.
	 <i>Fl.Y.4s APRJ1-B5</i>	1° 14'·864N., 103° 40'·013E.
	 <i>Fl.Y.4s APRJ1-B6</i>	1° 14'·659N., 103° 39'·942E.
	 <i>Fl.Y.2s HVB-06</i>	1° 15'·280N., 103° 37'·230E.

Chart 4031 [previous update 1306/14] WGS84 DATUM

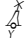
Insert	 Obstn	1° 14'·477N., 103° 39'·555E.
Delete	 <i>Fl.Y.4s APRJ1-B4</i>	1° 14'·935N., 103° 39'·814E.
	 <i>Fl.Y.4s APRJ1-B5</i>	1° 14'·864N., 103° 40'·013E.
	 <i>Fl.Y.4s APRJ1-B6</i>	1° 14'·659N., 103° 39'·942E.


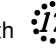
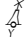



Chart 4033 [previous update 1309/14] WGS84 DATUM

Delete	 <i>Fl.Y.2s HVB-06</i>	1° 15'·280N., 103° 37'·230E.
--------	---	------------------------------

Chart 4038 [previous update 1306/14] WGS84 DATUM

Replace	 <i>Wk</i> with  Obstn	1° 14'·48N., 103° 39'·56E.
Delete	 <i>Fl.Y.4s APRJ1-B4</i>	1° 14'·94N., 103° 39'·81E.
	 <i>Fl.Y.4s APRJ1-B5</i>	1° 14'·86N., 103° 40'·01E.
	 <i>Fl.Y.4s APRJ1-B6</i>	1° 14'·66N., 103° 39'·94E.
	 <i>Fl.Y.2s HVB-06</i>	1° 15'·28N., 103° 37'·23E.
	★ <i>Fl.Y.2s HVB-11</i>	1° 17'·39N., 103° 37'·21E.

Chart 4040 [previous update 1308/14] WGS84 DATUM

Replace	 <i>Obstn</i> with  Obstn	1° 14'·48N., 103° 39'·56E.
Delete	 <i>Fl.Y.4s APRJ1-B4</i>	1° 14'·94N., 103° 39'·81E.
	 <i>Fl.Y.4s APRJ1-B5</i>	1° 14'·86N., 103° 40'·01E.
	 <i>Fl.Y.4s APRJ1-B6</i>	1° 14'·66N., 103° 39'·94E.
	 <i>Fl.Y.2s HVB-06</i>	1° 15'·28N., 103° 37'·23E.
	★ <i>Fl.Y.2s HVB-11</i>	1° 17'·39N., 103° 37'·21E.

V
EXTRACT OF ADMIRALTY NOTICES TO MARINERS
FOR DUAL-BADGED CHARTS

Updated to Admiralty Notices to Mariners Edition No. 17 of 2014 dated 24th April 2014.

MPA ENC DISTRIBUTORS

ENC DISTRIBUTOR	ADDRESS	TELEPHONE/FAX NO./EMAIL/WEBSITE
ChartWorld GmbH ChartWorld Asia Pacific Pte Ltd.	Atlantic Haus, Zirkusweg 1 D-20359 Hamburg Germany Frontech Centre 07-01, 15 Jalan Kilang Barat, Singapore 159357	Tel. No.: +49 40 853 58 6942 Fax No.: +49 40 853 58 6949 Email: sales@chartworld.com Tel No.: +65 6513 3500 Website : http://www.chartworld.com http://www.ecdis-as-a-service.com
DPM (Singapore) Pte Ltd	2 Boon Leat Terrace, #05-02/03 Harbourside 2, Singapore 119844	Tel. No.: +65 6270 4060 Fax No.: +65 6276 3858 Email: sales@dpmsingapore.com.sg Website: http://www.dpmsingapore.com.sg
Maritime Information Systems (MARIS) Maritime Information Systems AS (MARIS)	52, Telok Blangah Road #01-06, Telok Blangah House, Singapore 058809 Danholmen 25, 3128 Notteroy, Norway	Tel. No.: +65 6276 1472 Fax No.: +65 6276 1473 Email: : support@maris.sg Website: http://www.maris.no Tel. No.: +47 33 30 42 50 Fax No.: +47 33 30 42 51 Email: : sales@maris.no Website: http://www.maris.no
Motion Smith	15 Jalan Kilang Barat #08-01/05 Frontech Centre, Singapore 159357	Tel. No.: +65 6220 5098 Fax No.: +65 6225 4902 Email: sales@motsmith.com Website: http://www.motsmith.com
Transas Marine Pacific Pte Ltd	Cyber Centre 16/18 Jalan Kilang Barat Off Jalan Bukit Merah Singapore 159358	Tel. No.: +65 6271 0200 Fax No.: +65 6271 7300 Email: navigation.asia@transas.com Website: http://www.transas.com
Japan Hydrographic Association (Electronic Charts Division)	Daiichi Sogo Bldg, 6F 1-6-6, Hanedakuko, Ota-ku Tokyo 144-0041, Japan	Tel. No.: +81 3 5708 7093 Fax No.: +81 3 5708 7094 Email: shimizu-6ki@jha.jp Website: http://www.jha.or.jp/en/jha/
Jeppesen Norway AS	P.O Box 212 , N-4371 Egersund, Norway	Tel No.: +47 51 46 4700 Fax No: +47 51 46 4701 Email: license.marine@jeppesen.com Website : http://www.jeppesen.com/marine
PRIMAR STAVANGER	Lervigsveien 36, P.O Box 60, N-4001 Stavanger, Norway	Tel. No.: +47 51 93 9500 Fax No.: +47 51 93 9501 Email: sales@ecc.no Website : http://www.primar.no
The United Kingdom Hydrographic Office	Admiralty Way, Taunton, Somerset, TA1 2DN United Kingdom	Tel. No.: +44 1823 33 7900 Fax No.: +44 1823 28 4077 Emails: ENC.SalesReports@ukho.gov.uk Website: http://www.ukho.gov.uk

Chart Agents for the Maritime and Port Authority of Singapore
Nautical Charts and Publications

Please approach any of the appointed chart agents to purchase the Singapore Nautical Charts and Publications.

CHART AGENT	ADDRESS	TELEPHONE/FAX NO./EMAIL/WEBSITE
Cornes (Singapore) Pte Ltd	10 Anson Road #23-06/6A International Plaza Singapore 079903	Tel. No.: +65 6223 8320 Fax No.: +65 6223 8321 Email: sales9850@cspl.sg Website: http://www.cornes-charts.com
DPM (Singapore) Pte Ltd	2 Boon Leat Terrace, #05-02/03 Harbourside 2, Singapore 119844	Tel. No.: +65 6270 4060 Fax No.: +65 6276 3858 Email: sales@dpmsingapore.com.sg Website: http://www.dpmsingapore.com.sg
E.W. Liner Charts & Publications Pte Ltd	102F, Pasir Panjang Road, #08-01, Citilink Warehouse Complex, Singapore 118530	Tel. No.: +65 6323 0773 Fax No.: +65 6323 0775 Email: ewliner@singnet.com.sg Website: http://www.ewliner.com
Kelvin Hughes (Singapore) Pte Ltd	896 Dunearn Road #03-05 Sime Darby Centre Singapore 589472	Tel. No.: +65 6545 9880 Fax No.: +65 6545 8892 Email: leslie.khoo@kelvinhughes.com.sg Website: http://www.kelvinhughes.com
Motion Smith	15 Jalan Kilang Barat #08-01/05 Frontech Centre Singapore 159357	Tel. No.: +65 6220 5098 (After office hours:+65 8163 9993) Fax No.: +65 6225 4902 Email: sales@motsmith.com Website: http://www.motsmith.com

HYDROGRAPHIC NOTE - Instructions

1. Mariners are requested to notify the Chief Hydrographer, Maritime and Port Authority of Singapore, when new or suspected dangers to navigation are discovered, changes are observed in aids to navigation or where corrections to nautical publications may be necessary. Reports, which cannot be confirmed or are lacking in certain details should not be withheld.
2. Any ambiguities of time, positioning and depth should be stressed and any firm expectation of being able to check the information provided on a following voyage should be mentioned.
3. Mariners using satellite position fixing systems, eg. GPS, should provide details of equipment and datum used (where applicable). Where bearings (true or magnetic) are taken visually or by radar to fix a position, it should include more than two objects in order to provide a check on its accuracy. A position may also be defined by bearing and distance from a conspicuous object eg. beacon, lighthouse etc.
4. The note should include a tracing or a digital image of the chart used and the details should be clearly marked.
5. Echo sounders frequently register greater depths than the advertised maximum depth for the equipment, eg. a trace appearing at 50 metres may be in fact be 550 metres or even 1050 metres for equipment whose maximum depth is 500 metres. Erroneous depths caused by 2nd transmission error can usually be recognised by the following:
 - (a) the tracing being weaker than normal for the depth registered,
 - (b) the trace appearing to pass through the transmission line,
 - (c) the feathery nature of the trace.
6. Upon receipt of a hydrographic note, a Notice to Mariners may be issued. The sender's vessel or name is quoted as the source unless the same information is also received in foreign Notices to Mariners.
7. Reports of shoals, uncharted dangers and defects in aids to navigation may also be made to the appropriate Singapore Port Operations Control Centre on VHF Channels 10, 12, 14, 68 or 73.

HYDROGRAPHIC NOTE

To:

Chief Hydrographer
Maritime and Port Authority of Singapore
460 Alexandra Road PSA Building #20-00
Singapore 119963

Tel : (65) 6375 1227
Fax : (65) 6278 7646
Email : hydrographic@mpa.gov.sg

Sender's Contact Details :

Date :

Name of Vessel :

Address of Sender :

Tel : Fax :

Email :

Nature of Observation :

General Location :

Subject :

Position : Lat. Long.

Charts Used :

Date & Time of Observation :

Details :

.....

.....

.....

Attachment :

Equipment Used :

Type of Position Fixing : GPS / DGPS Others :

Type of Echo Sounder :

Name and Signature :

Ship's/Company's Stamp :