



## SINGAPOREAN NOTICES TO MARINERS

SECTION	CONTENT	Page
I	Affected Charts & Publications	1
II	New Charts & Publications	3
	Notices to Mariners and Chart Corrections	4
	Temporary and Preliminary Notices	5
III	Navigational Information	6
	Amendments to Publications	7
IV	Reprint of Maritime Safety Information	10
V	Extract of Admiralty Notices to Mariners for Dual-Badged Charts	12

The monthly Notices to Mariners contain information required to keep charts and publications published by the Hydrographic Department, Maritime and Port Authority of Singapore up-to-date.

Mariners are requested to notify the Chief Hydrographer, Maritime and Port Authority of Singapore, immediately of the discovery of new or suspected dangers to navigation, observed changes to aids to navigation and ways Singaporean Charts and Publications can be improved. The Hydrographic Note on the back page should be used for this purpose.

Detailed information of charts and publications (coverage of charts, latest editions and distributors) are available on the Maritime and Port Authority Website: [www.mpa.gov.sg](http://www.mpa.gov.sg)

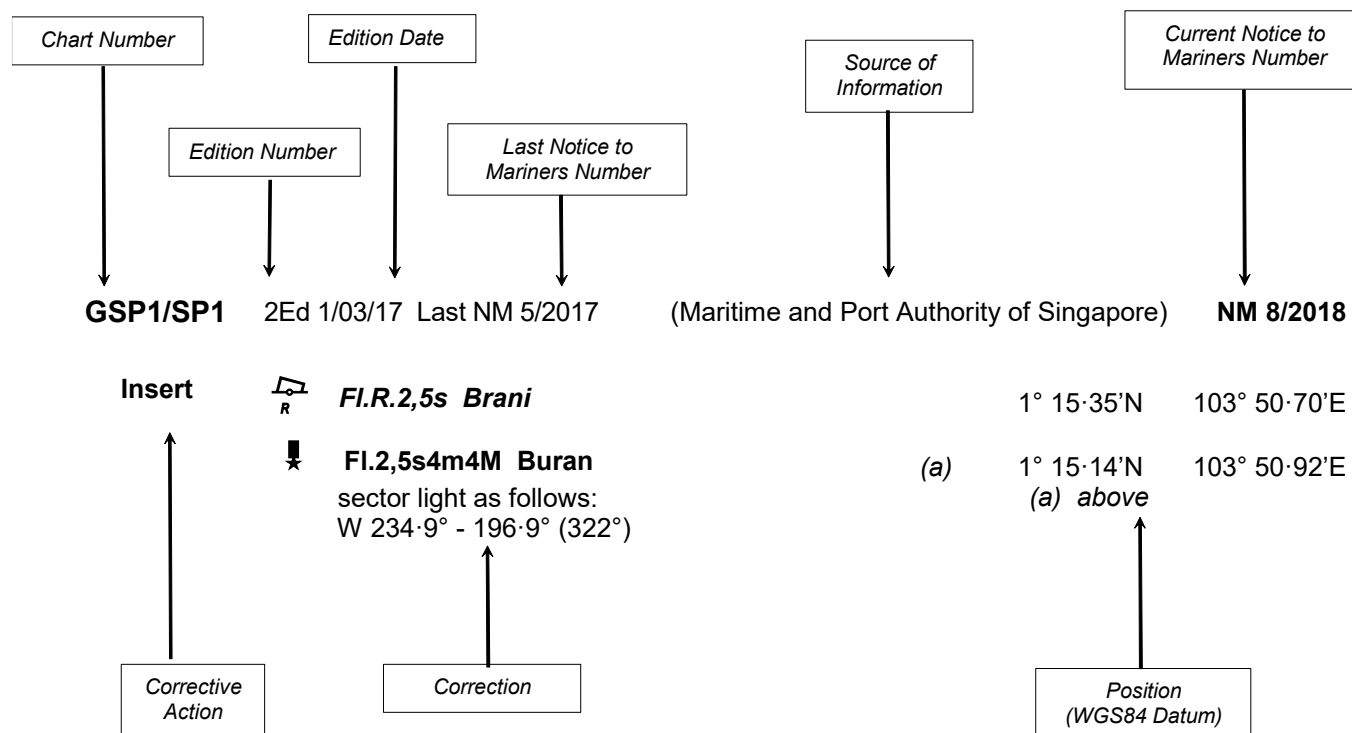
- [Singaporean Notice to Mariners](#)
- [Singaporean Charts](#)
- [Dual-Badged Charts](#)
- [Singapore ENC](#)
- [Malacca and Singapore Straits ENC](#)
- [Singapore Port Information](#)
- [Singapore Tide Tables](#)

### Contact information:

Hydrographic Department  
Maritime and Port Authority of Singapore  
7B Keppel Road  
#20-00 Tanjong Pagar Complex  
Singapore 089055  
Tel : (65) 6325 2027  
Fax : (65) 6226 1076  
Email : [hydrographic@mpa.gov.sg](mailto:hydrographic@mpa.gov.sg)

## EXPLANATION OF FORMAT

The elements of a typical chart correction are explained below.



### Notes:

- Notice to Mariners number followed by:  
**T** indicates a Temporary Notice (eg. **NM 9T/2018**).  
**P** indicates a Preliminary Notice (eg. **NM 10P/2018**).
- Bearings are true reckoned clockwise from 000° to 359°; those relating to lights are from seaward.
- Heights and elevations are above Mean High Water Springs.

I  
**AFFECTED CHARTS AND PUBLICATIONS**

**INDEX OF AFFECTED CHARTS**

<b>DESCRIPTION</b>	<b>NOTICE NO.</b>	<b>PAGE NO.</b>
New Charts and Publications	-	3
Singaporean Chart GSP1/SP1	*36, *37, *38	4
Singaporean Chart 500	*39	4
Temporary and Preliminary Notices	-	5
Singapore Port Marine Notices/Circulars	*40	6
Amendments to Publications	*41, *42	7 to 9
Reprint of Maritime Safety Information	-	10, 11
Extract of Admiralty Notices to Mariners for Dual-Badged Charts	-	12 to 18

\*Source: Maritime and Port Authority of Singapore

I  
**AFFECTED CHARTS AND PUBLICATIONS**

**INDEX OF NOTICES**

<b>NOTICE NO.</b>	<b>DESCRIPTION</b>	<b>PAGE NO.</b>
-	New Charts and Publications	3
*36, *37, *38	Singaporean Chart GSP1/SP1	4
*39	Singaporean Chart 500	4
-	Temporary and Preliminary Notices	5
*40	Singapore Port Marine Notices/Circulars	6
*41, *42	Amendments to Publications	7 to 9
-	Reprint of Maritime Safety Information	10, 11
-	Extract of Admiralty Notices to Mariners for Dual-Badged Charts	12 to 18



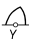

\*Source: Maritime and Port Authority of Singapore

**II**  
**NEW CHARTS AND PUBLICATIONS**

NIL

## II

## NOTICES TO MARINERS AND CHART CORRECTIONS

<b>GSP1/SP1</b>	3 Ed 15/1/18 Last NM 23/2018	(Maritime and Port Authority of Singapore)	<b>NM 36/2018</b>
<b>Delete</b>	 <i>Fl. Y. 2s Xinsha-2</i>	1°13·30'N	103°37·90'E
		(Maritime and Port Authority of Singapore)	<b>NM 37/2018</b>
<b>Delete</b>	 <i>VQ(3)5 HSPBV 01</i>	1°14·14'N	103°37·50'E
		(Maritime and Port Authority of Singapore)	<b>NM 38/2018</b>
<b>Delete</b>	 <i>Fl. Y. 16s Entrance</i>	1°18·49'N	103°37·14'E
<hr/>			
<b>500</b>	8 Ed 15/9/17 Last NM 23/2018	(Maritime and Port Authority of Singapore)	<b>NM 39/2018</b>
<b>Delete</b>	 Merawang Fl.G.6s	1°19·75'N	103°37·70'E
<hr/>			

**II**  
**TEMPORARY AND PRELIMINARY NOTICES**

NIL

### III NAVIGATIONAL INFORMATION

\*(NM 40/2018)

**SINGAPORE PORT MARINE NOTICES/CIRCULARS**

The Port Marine Notices/Circulars shortlisted below would be of particular interest to Mariners. Details and complete list of Port Marine Notices/Circulars are available at this link:

<http://www.mpa.gov.sg/web/portal/home/port-of-singapore/circulars-and-notices>

**PMN No.****Subject**

29/2018	Dredging works off Sultan Shoal Lighthouse
34/2018	Reclamation work at Pulau Tekong
35/2018	Mooring and unmooring of vessels off Pulau Tekong
36/2018	Soil investigation work off Changi Ferry Terminal
38/2018	Reclamation work at Tuas View, off Temasek Fairway
39/2018	Mooring and unmooring of vessels at Tuas Finger One project area

**PMC No.****Subject**

3/2018	Persons authorised to supply water to ocean going vessels and harbour craft in Port
--------	---

---

\*Source: Maritime and Port Authority of Singapore

### III AMENDMENTS TO PUBLICATIONS

\*(NM 41/2018) UPDATING OF PUBLICATION “SINGAPORE PORT INFORMATION 2018/2019”

#### CHARACTERISTICS OF AIDS TO NAVIGATION

1. Page 131

##### WEST JOHOR STRAIT

**Delete** the following:

Name Of Beacon/Buoy	Position Lat. N Long. E	Structure, Colour & Shape	Light Characteristic	Owner
Entrance Buoy	01°18.485' 103°37.144'	Yellow conical	Fl.Y.16s	MPA

2. Page 132

##### TUAS VIEW EXTENSION

**Delete** the following:

Name Of Beacon/Buoy	Position Lat. N Long. E	Structure, Colour & Shape	Light Characteristic	Owner
HSPBV 01 Buoy	01°14.137' 103°37.504'	Double black cones topmark bases together on black yellow black pillar	VQ(3)5s	HSPBV Joint Venture
Xinsha-2 Buoy	01°13.296' 103°37.902'	Yellow pillar	Fl.Y.2s	Xinsha

#### WHARVES AND BERTHS

3. Page 159

##### 4 JURONG ISLAND - TEMASEK FAIRWAY (SCP TEMBUSU TERMINAL) (1°15.6'N, 103°39.5'E)

**Amend** the following:

Berth	Length of Berth Box	Depth Alongside (Year Surveyed)	Controlling Depth In Approaches
OT1	320m	17.0m (2018)	15.0m

### III AMENDMENTS TO PUBLICATIONS

4. Page 162

**16 JURONG ISLAND — BANYAN BASIN (HORIZON SINGAPORE TERMINALS PTE LTD)**  
(1°14·7'N, 103°41·4'E)

**Amend** the following:

Berth	Length of Berth Box	Max LOA	Min LOA	Depth Alongside (Year Surveyed)	Controlling Depth In Approaches
OBH 1	367m	333m	-	16.8m (2017)	16.5m from Sinki Fairway and 14.9m from Selat Pandan
OBH 2	275m	250m	-	<b>15.4m (2018)</b>	
OBH 3	267m	200m	-	15.6m (2017)	
OBH 4	267m	200m	-	15.6m (2017)	

**Amend** the following:

**18 JURONG ISLAND — BANYAN BASIN (UT SINGAPORE SERVICES PTE LTD)**  
(1°14·5'N, 103°41·5'E)

#### BERTH OPERATORS' INFORMATION

5. Page 190

**Amend** the following:

COMPANY	ADDRESS	TELEPHONE	FACSIMILE
<b>UT Singapore Services Pte Ltd</b>	61 Meranti Crescent Singapore 627807	63030133	63030138

\*Source: Maritime and Port Authority of Singapore

### III AMENDMENTS TO PUBLICATIONS

\*(NM 42/2018) UPDATING OF PUBLICATION “SINGAPORE TIDE TABLE 2018”

#### DISTRIBUTORS FOR THE MARITIME AND PORT AUTHORITY OF SINGAPORE PUBLICATIONS

1. Page 275

**Amend** the following:

Distributor	: Global Navigation Solutions Ltd
Address	: 2 Boon Leat Terrace, #05-02/03/04, Harbourside Building 2 Singapore 119844
Telephone	: (65) 6270 4060 After Office hours: (65) 9632 5268
Fax	: (65) 6276 3858
Email	: <b><a href="mailto:purchasing@gnsworldwide.com">purchasing@gnsworldwide.com</a></b>
Internet Web Site	: <a href="http://www.gnsworldwide.com">http://www.gnsworldwide.com</a>

---

\*Source: Maritime and Port Authority of Singapore

## IV

### REPRINT OF MARITIME SAFETY INFORMATION

The following Maritime Safety Information have been shortlisted, as they would be of particular interest to mariners.

#### TT175

VESSELS IN EAST JOHOR STRAIT ARE ADVISED TO NAVIGATE WITH PARTICULAR ALERTNESS AND CAUTION WHEN NEAR THE PROJECT AREAS OFF PULAU TEKONG, CHANGI AND MALANG PAPAN AS SHALLOW WATER AREAS EXIST. VESSELS ARE REMINDED TO PROCEED AT A SAFE SPEED AND MAINTAIN A PROPER LOOKOUT, PARTICULARLY FOR TUGS AND BARGES NAVIGATING NEAR THE PROJECT AREAS AND PASSENGER FERRIES CROSSING BETWEEN CHANGI AND PULAU TEKONG AND VICINITY OF PASIR GUDANG.

#### TT273

ALL VESSELS ARE ADVISED TO NAVIGATE WITH CAUTION, COMPLY WITH THE COLREGS, MAINTAIN VHF RADIO WATCH AND LISTEN TO TRAFFIC INFORMATION WHEN NAVIGATING IN THE SINGAPORE STRAIT AND PORT WATERS. MARINERS ARE ALSO ADVISED TO KEEP A GOOD LOOKOUT OF FREQUENT FERRIES CROSSING THE SINGAPORE STRAIT.

#### TT363

MARINERS ARE REMINDED NOT TO ANCHOR IN ALL AREAS IN THE TSS, INCLUDING PRECAUTIONARY AREAS OF THE STRAITS OF MALACCA AND SINGAPORE AS WELL AS BETWEEN THE LANDWARD LIMITS OF THE TSS AND APPROACHES TO THE PORTS. VESSELS ENTERING ANY PORT IN ANY LITTORAL STATES ARE TO ANCHOR IN THE ANCHORAGES DESIGNATED BY THE RESPECTIVE LITTORAL STATES ONLY.

#### TT399

VESSELS ARRIVING TO SINGAPORE OR TRANSITING THROUGH THE STRAIT ARE RECOMMENDED TO UPDATE THEIR DESTINATION ACCURATELY IN THE AIS TO ENHANCE SITUATIONAL AWARENESS FOR OTHER TRAFFIC IN THE VICINITY. EXAMPLE: SG-PEBGB FOR PILOT EASTERN BOARDING GROUND BRAVO.

#### TT418

WEST BOUND DEEP DRAFT VESSELS AND VLCCS ARE REMINDED TO COMPLY WITH THE RULES OF VESSELS NAVIGATING THROUGH THE STRAITS OF MALACCA AND SINGAPORE (SOMS). THEY SHALL ALLOW FOR AN UKC OF AT LEAST 3.5 METRES AT ALL TIMES DURING THE ENTIRE PASSAGE THROUGH THE SOMS AND AS FAR AS IT IS SAFE & PRACTICABLE, PROCEED AT A SPEED OF NOT MORE THAN 12 KTS OVER THE GROUND IN THE WESTBOUND LANE OF THE SINGAPORE STRAIT (BETWEEN SOUTH OF ST JOHN'S ISLAND & RAFFLES LIGHTHOUSE).

THEY ARE ADVISED TO BROADCAST, 8 HOURS BEFORE ENTERING THE TSS, NAVIGATIONAL INFORMATION GIVING NAME, DEADWEIGHT, DRAUGHT, SPEED AND TIMES OF PASSING HORSBURGH LIGHTHOUSE AND RAFFLES LIGHTHOUSE.

#### TT426

ALL MARINERS ARE REMINDED TO NAVIGATE WITH CAUTION IN THE PRECAUTIONARY AREAS AND TSS, MAINTAIN A GOOD LOOKOUT FOR CROSSING TRAFFIC. VESSELS INTENDING TO CROSS THE TSS SHALL DO SO ONLY WHEN IT IS SAFE AND SHALL AT ALL TIMES COMPLY WITH THE COLLISION REGULATIONS.

#### TT430 (AMENDED ON 29 DEC 2017 0152Z)

THE FOLLOWING ATONS AIS/RACONS ARE TEMPORARILY REMOVED FOR UPGRADING.

ATONS WITH AIS TEMPORARILY REMOVED FOR UPGRADING:

1. ANGLER BUOY
2. BANYAN BEACON
3. MALANG PAPAN BEACON
4. RASU BUOY
5. RAFFLES LIGHTHOUSE
6. SAKIJANG BEACON
7. SELEGI BEACON

ATONS WITH RACON TEMPORARILY REMOVED FOR UPGRADING:

1. CYRENE BEACON
2. HORSBURGH LIGHTHOUSE
3. RAFFLES LIGHTHOUSE
4. SEREBUT BEACON
5. SULTAN SHOAL LIGHTHOUSE

MARINERS ARE ADVISED TO NAVIGATE WITH CAUTION.

#### IV

### REPRINT OF MARITIME SAFETY INFORMATION

TT437

ALL VESSELS IN SEMBAWANG WHARVES LOCATION ARE TO CHECK YOUR COSPAS-SARSAT SYSTEM AND ENSURE THAT 121.5MHZ IS NOT TRANSMITTED. PLEASE STOP EMITTING YOUR 121.5MHZ DISTRESS ALERT IF YOU ARE NOT IN DISTRESS TO PREVENT INTERFERENCE TO AIRSPACE FREQUENCY.

TT440

A NUMBER OF UNKNOWN VESSELS ARE OBSERVED ANCHORED IN THE TSS/PRECAUTIONARY AREA SOUTH OF TG. RAMUNIA AT APPROXIMATE POSITION 1°17'91"N 104°14'92"E. ALL VESSELS ARE ADVISED TO KEEP A GOOD LOOKOUT AND PROCEED WITH CAUTION WHEN PASSING THIS AREA IN THE SINGAPORE STRAIT.

TT460

RACON D BUOY Q(6)LF15s IN POSITION 1°03'63"N 103°38'81"E IS REPORTED MISSING AND UNLIT. VSLs ADVISED TO NAVIGATE WITH CAUTION.

TT464

SURVEY VESSEL SUMBER OCEAN IS CONDUCTING MARINE SURVEY IN SINGAPORE STRAIT AT TSS WEST/EAST BOUND LANE AND TSS ZONE (SECTOR 7) FROM 21 APRIL 2018 TO 30 APRIL 2018. VESSELS PASSING THE VICINITY ARE ADVISED TO KEEP WELL CLEAR OF THE SURVEY VESSEL PROCEED AT SAFE SPEED AND TO NAVIGATE WITH CAUTION.

TT961

VESSELS INTENDING TO CROSS THE TRAFFIC SEPERATION SCHEME (TSS) OR PRECAUTIONARY AREAS IN THE SINGAPORE STRAIT DURING THE HOURS OF DARKNESS ARE RECOMMENDED TO DISPLAY THE NIGHT SIGNALS CONSISTING OF 3 ALL ROUND GREEN LIGHTS IN A VERTICAL LINE AS DETAILED IN THE MARITIME AND PORT AUTHORITY OF SINGAPORE'S PORT MARINE CIRCULAR, 04 OF 2013 DATED 7 MAY 2013.

SR123

SEA ROBBERIES ARE REPORTED IN THE SINGAPORE STRAIT. ALL VESSELS TO REPORT ANY SUSPICIOUS CRAFT TO VTIS SINGAPORE.

SR414

REPORT OF AN UNAUTHORISED BOARDING ON 22 APRIL 2018 AT 0001HRS LT IN POSITION 1°16'00"N 104°01.00'E. MARINERS ARE ADVISED TO BE VIGILANT AND MAINTAIN ANTI-PIRACY WATCH WHEN PASSING THE AREA.

---

ISSUED BY SINGAPORE PORT OPERATIONS CONTROL CENTRE (as at 22<sup>nd</sup> April 2018)

**V**  
**EXTRACT OF ADMIRALTY NOTICES TO MARINERS**  
**FOR DUAL-BADGED CHARTS**

These notices can also be accessed directly from UKHO Website:

<https://www.admiralty.co.uk/maritime-safety-information/admiralty-notices-to-mariners>

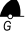
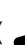
**1596 SINGAPORE - Port of Singapore - Temasek Fairway and Johor Strait - Buoyage. Maritime limit. NM Blocks.**

Source: Maritime and Port Authority of Singapore

**Chart 4030** [ *previous update 387/18* ] WGS84 DATUM

Insert	 <b>Fl.Y.4s GMAPS 01</b>	1°13.970'N	103°38.145'E
	 <b>Fl.Y.2s Xinsha-2</b>	1°13.296'N	103°37.902'E
Move	 <b>Fl.G.4s Jurong Dua</b> , from:	1°15.003'N	103°39.572'E
	to:	1°15.012'N	103°39.597'E
	 <b>Fl.Y.6s Xinsha-1</b> , from:	1°13.200'N	103°38.432'E
	to:	1°13.296'N	103°38.476'E
Delete	maritime limit, pecked line, joining:	1°15.440'N	103°38.710'E
	 ( )	1°15.415'N	103°38.709'E
		1°15.415'N	103°37.504'E
		1°15.333'N	103°37.333'E
		1°15.333'N	103°38.760'E
		(fairway limit)	
	 <b>Fl.Y.4s HSPBV 02</b>	1°13.807'N	103°37.661'E
	 <b>Fl.Y.2s HSPBV 03</b>	1°13.060'N	103°38.010'E

**Chart 4031** [ *previous update 1293/18* ] WGS84 DATUM

Move	 <b>Fl.G.4s Jurong Dua</b> , from:	1°15.003'N	103°39.572'E
	to:	1°15.012'N	103°39.597'E
Delete	maritime limit, pecked line, joining:	1°15.415'N	103°38.500'E
		(W border)	
		1°15.415'N	103°38.709'E
		1°15.440'N	103°38.709'E
	 ( )	and	
		1°15.333'N	103°38.500'E
		(W border)	
		1°15.333'N	103°38.760'E
		(fairway limit)	

**V**  
**EXTRACT OF ADMIRALTY NOTICES TO MARINERS**  
**FOR DUAL-BADGED CHARTS**

**Chart 4032** [ *previous update 161/18* ] WGS84 DATUM

Insert the accompanying block, centred on: 1°16·0'N 103°43·8'E

**1596 SINGAPORE - Port of Singapore - Temasek Fairway and Johor Strait - Buoyage. Maritime limit. NM Blocks. (continued)**

**Chart 4033** [ *previous update 161/18* ] WGS84 DATUM

Move

*Fl.G.4s Jurong Dua*, from:

1°15·003'N 103°39·572'E

to:

1°15·012'N 103°39·597'E

Delete

maritime limit, pecked line, joining:

1°15·440'N 103°38·709'E



1°15·415'N 103°38·709'E

1°15·415'N 103°37·504'E

1°15·333'N 103°37·333'E

1°15·333'N 103°38·760'E

(fairway limit)

**Chart 4034** [ *previous update 5728/17* ] WGS84 DATUM

Insert the accompanying block, centred on: 1°16·0'N 103°43·8'E

**Chart 4035** [ *previous update 5728/17* ] WGS84 DATUM

Insert the accompanying block, centred on: 1°12·5'N 103°47·4'E

**Chart 4036** [ *previous update 164/18* ] WGS84 DATUM

Insert the accompanying block, centred on: 1°12·5'N 103°47·4'E

**Chart 4038** [ *previous update 847/18* ] WGS84 DATUM

Insert the accompanying block A, centred on: 1°19·2'N 103°37·4'E

the accompanying block B, centred on: 1°16·6'N 103°36·6'E

*Fl.Y.4s GMAPS 01*

1°13·97'N 103°38·15'E

*Fl.Y.2s Xinsha-2*

1°13·30'N 103°37·90'E

Move

*Fl.G.4s Jurong Dua*, from:

1°15·00'N 103°39·57'E

to:

1°15·01'N 103°39·60'E

*Fl.Y.6s Xinsha-1*, from:

1°13·21'N 103°38·45'E

to:

1°13·30'N 103°38·48'E

**V**  
**EXTRACT OF ADMIRALTY NOTICES TO MARINERS**  
**FOR DUAL-BADGED CHARTS**

Delete maritime limit, pecked line, joining: 1°15·44'N 103°38·71'E



1°15·42'N 103°38·71'E

1°15·42'N 103°37·50'E


1°15·33'N 103°37·33'E

1°15·33'N 103°38·76'E

(fairway limit)

 **Fl. Y. 4s HSPB V 02**

1°13·81'N 103°37·66'E

 **Fl. Y. 2s HSPB V 03**

1°13·06'N 103°38·01'E

**Chart 4038 (Panel C, Tuas Mega Yard) [ previous update 847/18 ] WGS84 DATUM**

Insert the accompanying block C, centred on: 1°16·3'N 103°36·5'E

**Chart 4039 [ previous update 4890/17 ] WGS84 DATUM**

Insert  **Fl. Y. 2s Xinsha-2** 1°13·30'N 103°37·90'E

Move  **Fl. Y. 6s Xinsha-1**, from: 1°13·21'N 103°38·45'E  
to: 1°13·30'N 103°38·48'E

Delete  **Fl. Y. 2s HSPB V 03** 1°13·06'N 103°38·01'E

**Chart 4040 [ previous update 387/18 ] WGS84 DATUM**

Insert the accompanying block A, centred on: 1°18·9'N 103°37·2'E

the accompanying block B, centred on: 1°16·5'N 103°36·7'E

the accompanying block C, centred on: 1°16·0'N 103°43·8'E












 **Fl. Y. 4s GMAPS 01** (a) 1°13·97'N 103°38·15'E

 **Fl. Y. 2s Xinsha-2** (b) 1°13·30'N 103°37·90'E

Move  **Fl. Y. 6s Xinsha-1**, from: 1°13·21'N 103°38·45'E  
to: 1°13·30'N 103°38·48'E

 **Fl. G. 4s Jurong Dua**, from: 1°15·00'N 103°39·57'E  
to: 1°15·01'N 103°39·60'E

**V**  
**EXTRACT OF ADMIRALTY NOTICES TO MARINERS**  
**FOR DUAL-BADGED CHARTS**

Delete	 <i>Fl. Y. 4s HSPBV 02</i> , close SW of:	(a) above	
	 <i>Fl. Y. 2s HSPBV 03</i> , close SE of:	(b) above	
	maritime limit, pecked line, joining:	1°15'44'N	103°38'71'E
		1°15'41'N	103°38'71'E
		1°15'41'N	103°37'50'E
		1°15'33'N	103°37'33'E
		1°15'33'N	103° 38'76'E
		(fairway limit)	
<b>1597 SINGAPORE - Changi East, Kuala Johor and Pulau Tekong - NM Blocks. Buoyage.</b>			
Source: Maritime and Port Authority of Singapore			
<b>Chart 4041</b> [ <i>previous update 164/18</i> ] WGS84 DATUM			
Insert	the accompanying block, centred on:	1°18'5'N	104°00'5'E
<b>Chart 4042</b> [ <i>previous update 1158/18</i> ] WGS84 DATUM			
Delete	 <i>Fl. Y. 4s NEA-CHG</i>	1°20'71'N	104°04'98'E
<b>Chart 4043</b> [ <i>previous update 1135/18</i> ] WGS84 DATUM			
Insert	the accompanying block, centred on:	1°18'5'N	104°00'5'E
	 <i>Fl. Y. 4s NEA-CHG</i>	1°20'02'N	104°02'52'E
	 <i>Fl. Y. 2s HY-CSO4</i>	1°22'26'N	104°00'53'E
	 <i>Fl. Y. 2s HY-CSO2</i>	1°22'31'N	104°00'52'E
Delete	former  <i>Fl. Y. 4s NEA-CHG</i>	1°20'71'N	104°04'98'E
	 <i>Fl. Y. 2s(sync) HDEC-1</i>	(a) 1°24'23'N	104°00'92'E
	 <i>Fl. Y. 2s(sync) HDEC-3</i>	(b) 1°24'22'N	104°01'18'E
	 <i>Fl. Y. 2s(sync) HDEC-4</i> , close N of:	(b) above	
	 <i>Fl. Y. 2s(sync) HDEC-6</i> , close N of:	(a) above	

**V**  
**EXTRACT OF ADMIRALTY NOTICES TO MARINERS**  
**FOR DUAL-BADGED CHARTS**

**1597**                    **SINGAPORE - Changi East, Kuala Johor and Pulau Tekong - NM Blocks. Buoyage. (continued)**

**Chart 4044** [ *previous update 1135/18* ] WGS84 DATUM

Insert



***Fl.Y.2s HY-CS02***

1°22'31'N

104°00'52'E



***Fl.Y.2s HY-CS04***

1°22'26'N

104°00'53'E



***Fl.Y.4s NEA-CHG***

1°20'02'N

104°02'52'E

Delete



***Fl.Y.2s(sync) HDEC-1***

(a) 1°24'23'N

104°00'92'E



***Fl.Y.2s(sync) HDEC-3***

(b) 1°24'22'N

104°01'18'E



***Fl.Y.2s(sync) HDEC-4, close N of:***

(b) above



***Fl.Y.2s(sync) HDEC-6, close N of:***

(a) above



**V**  
**EXTRACT OF ADMIRALTY NOTICES TO MARINERS**  
**FOR DUAL-BADGED CHARTS**

**1786 SINGAPORE - Raffles Shoal N and Temasek Fairway - Legends. Note. Anchorage areas.**

Source: Maritime and Port Authority of Singapore

*Note:* Chart 4039 is to be deleted from the list of charts affected by Notice 1187(P)/18.

**Chart 4039** [ *previous update 1596/18* ] WGS84 DATUM

Insert	legend, ( <b>see Note</b> ), centred on:	1°11.16'N	103°41.61'E
Amend	legend to, <b>Sudong Explosive</b> , centred on:	1°10.31'N	103°42.74'E
Replace	the existing note, SUDONG EXPLOSIVE ANCHORAGE, with the accompanying note, SUDONG SPECIAL PURPOSE ANCHORAGE, centred on:	1°02.53'N	103°47.53'E
Delete	limit of anchorage area, pecked line, joining:	1°13.28'N	103°38.47'E
	(existing limit)		
		1°13.06'N	103°38.01'E
		1°13.70'N	103°37.71'E
		(N border)	
	legend, <i>LNG/LPG/Chemical Gas Carrier</i>  , centred on:	1°13.63'N	103°38.35'E
	legend, <i>Sudong Bunkering A</i>  , centred on:	1°11.83'N	103°40.83'E
	limit of anchorage area, pecked line, joining:	1°11.76'N	103°41.42'E
	(existing limit)		
		1°11.37'N	103°41.08'E
	(existing limit)		
	and		
		1°11.42'N	103°42.14'E
	(existing limit)		
		1°10.88'N	103°41.73'E
	(existing limit)		
	legend, <i>Sudong Explosive</i> ( <i>see Note</i> ), and associated symbols, centred on:	1°10.91'N	103°42.18'E

## V

## EXTRACT OF ADMIRALTY NOTICES TO MARINERS FOR DUAL-BADGED CHARTS

**1698(P)/18 SINGAPORE - Jurong Island S - Note.**

Source: Maritime and Port Authority of Singapore

1. Updated Section: ANCHORAGES

Replace: Jurong Sector

With:

**Jurong Sector**

**\*• Sudong Petroleum Holding Anchorage (ASPH):**

- Centred on 1°09·89'N, 103°43·22'E. For port limit tankers waiting to service vessels at Sudong anchorages. Depths from 22 to 31m.

**\*• Sudong Explosives Anchorage (ASUEX):**

- Centred on 1°10·30'N, 103°42·80'E. For vessels and small craft loading or discharging explosives and IMO Class 1 dangerous goods, and vessels in transit with such cargo, and other vessels as directed by the Port Master. Depths from 19 to 32m. A height restriction of **47m** applies and vessels should keep at least 600m from New Southern Islands Live Firing Area.

**\*• Sudong Special Purpose Anchorage (ASSPU)**

- Centred on 1°11·37'N, 103°41·57'E. For VLCCs over 75 000gt requiring immigration clearance, and other vessels as directed by the Port Master. Depths from 21 to 32m.

**\*• Sudong Holding Anchorage (ASH):**

- Centred on 1°12·04'N, 103°40·17'E. A temporary holding anchorage used with prior permission of the Port Master. Depths from 23 to 28m. A wreck (1°11·99'N, 103°40·26'E), depth 24·1m, lies close inside the E boundary.

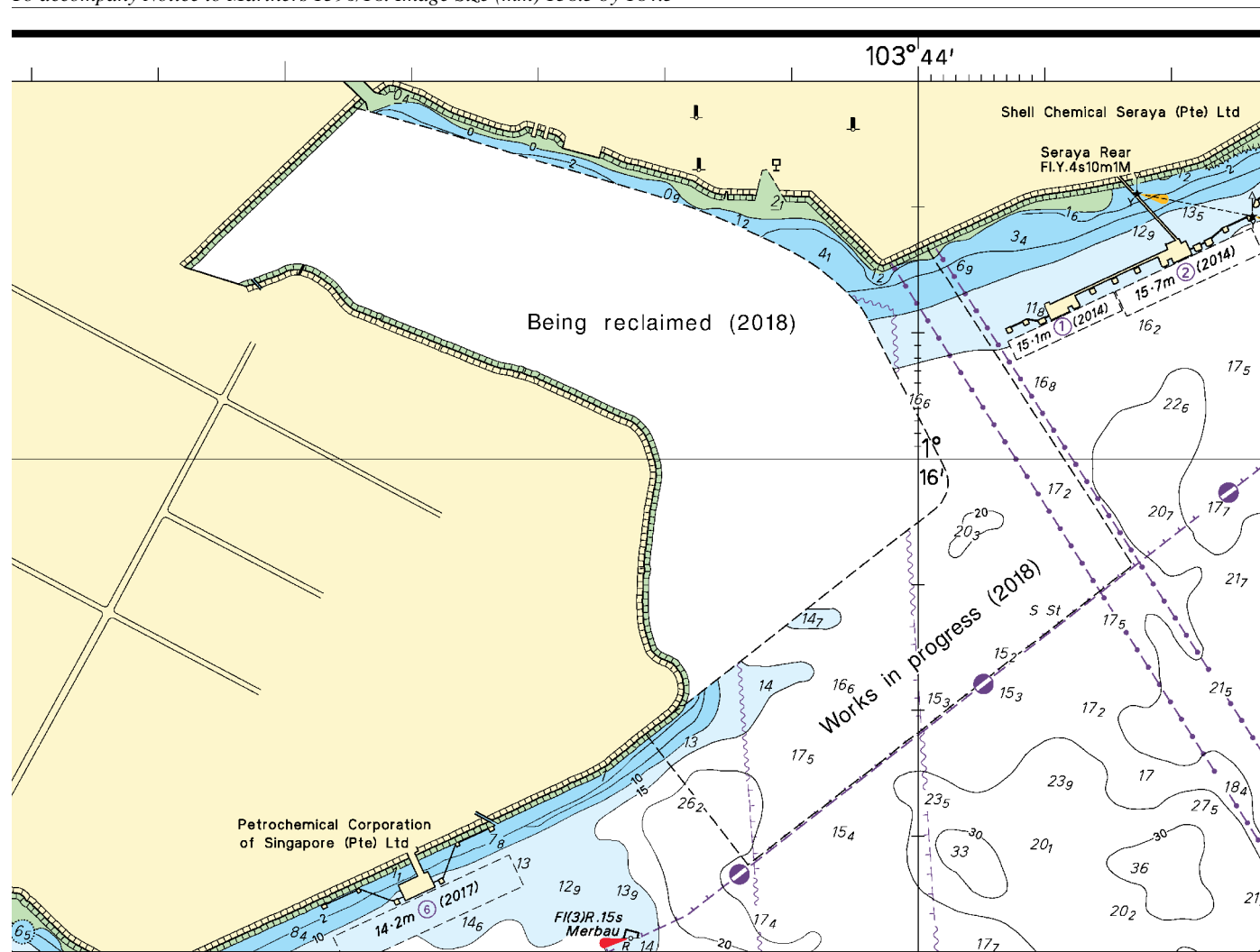
2. Former Notice 1186(P)/18 is cancelled.

\* Indicates new or revised entry.

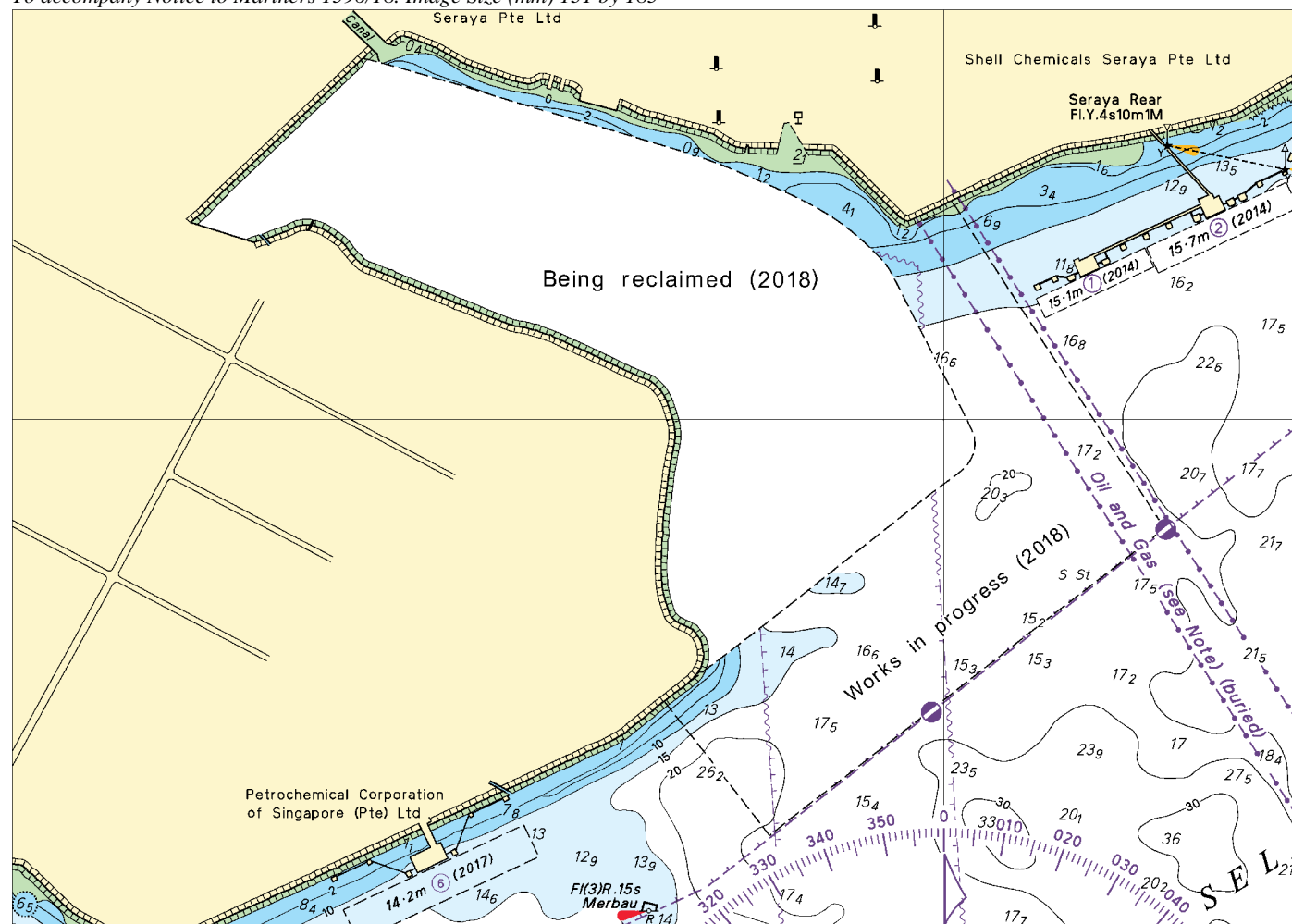
**Chart affected - 8176**

---

Updated to Admiralty Notices to Mariners No. 17 of 2018 dated 26<sup>th</sup> April 2018

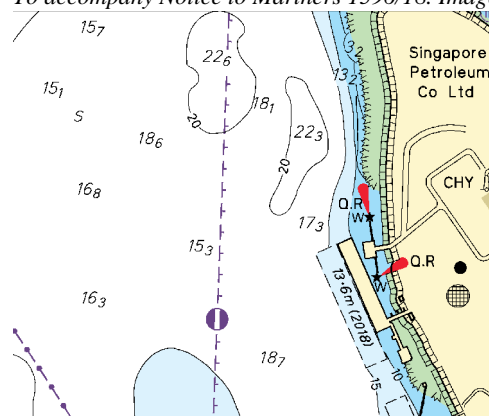


To accompany Notice to Mariners 1596/18. Image Size (mm) 131 by 185



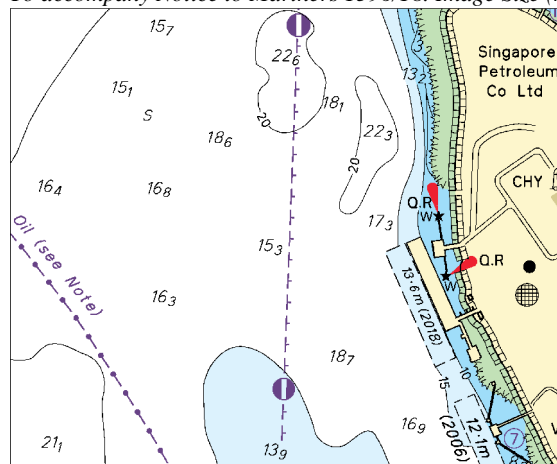
Block for Chart No 4034

*To accompany Notice to Mariners 1596/18. Image Size (mm) 54 by 63.3*

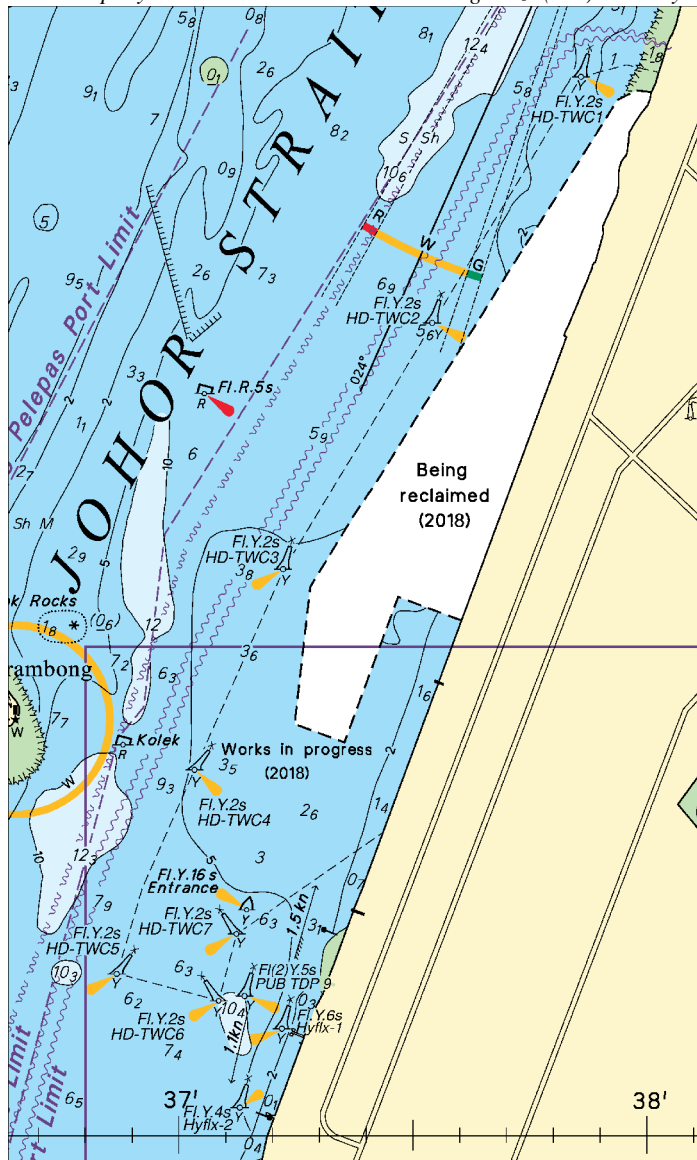


Block for Chart No 4035

To accompany Notice to Mariners 1596/18. Image Size (mm) 60.6 by 72.9

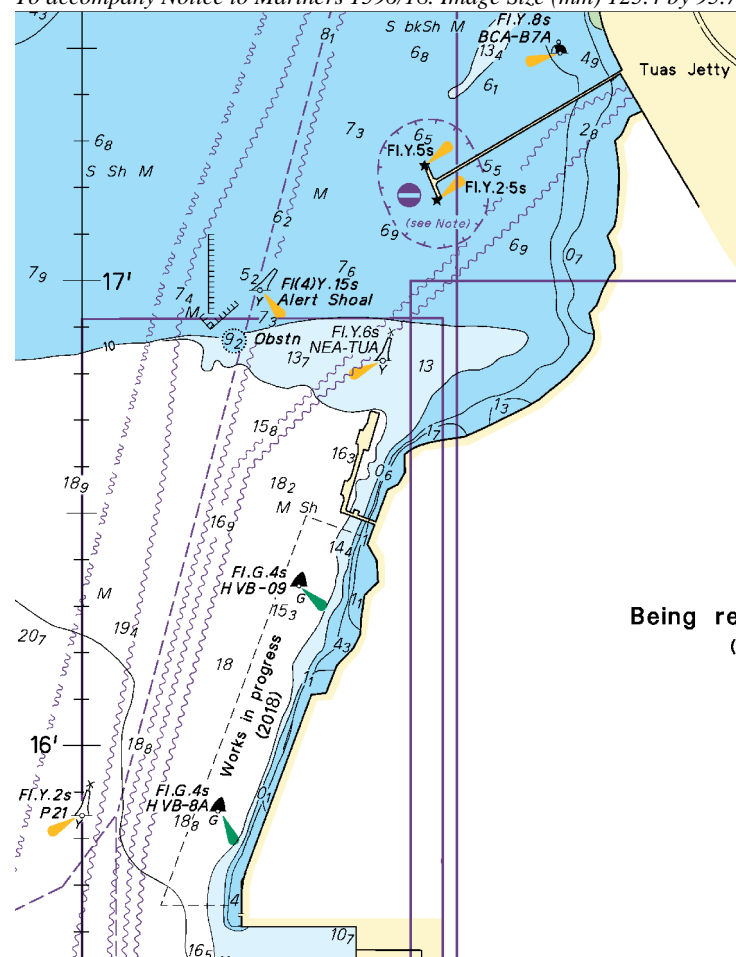


Block for Chart No 4036



Block A for Chart No 4038

To accompany Notice to Mariners 1596/18. Image Size (mm) 125.4 by 95.7



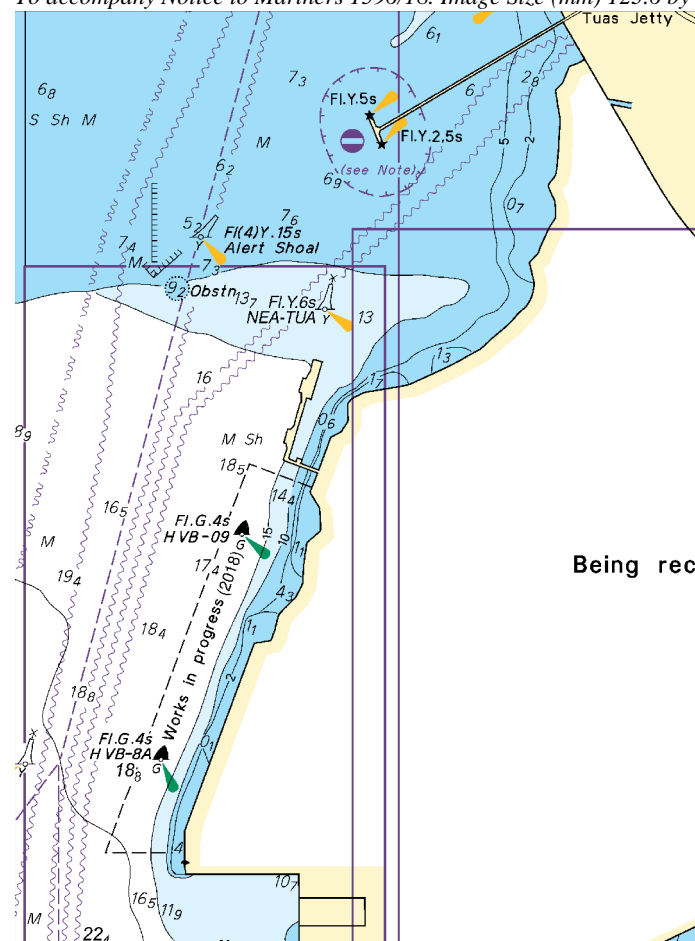
Block B for Chart No 4038

Being re  
(



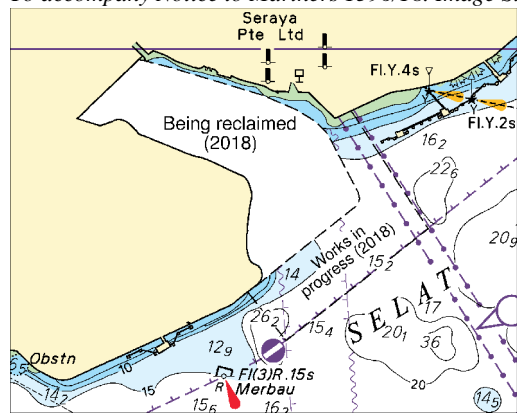
Block A for Chart No 4040

To accompany Notice to Mariners 1596/18. Image Size (mm) 123.6 by 90.1



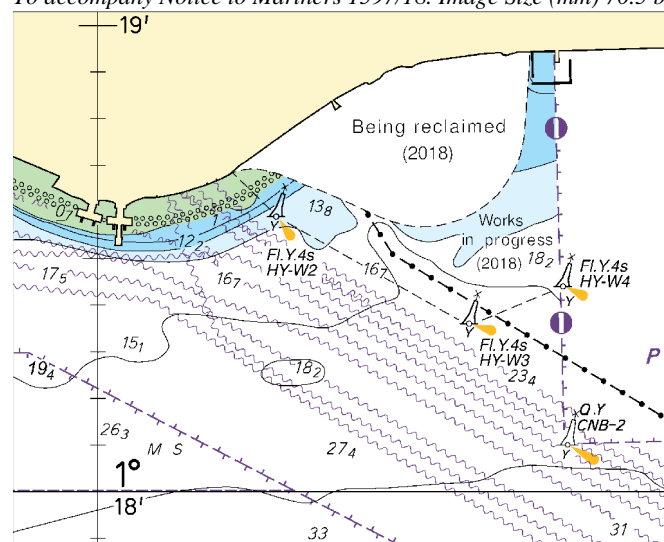
Block B for Chart No 4040

To accompany Notice to Mariners 1596/18. Image Size (mm) 53.4 by 67



Block C for Chart No 4040

To accompany Notice to Mariners 1597/18. Image Size (mm) 70.5 by 86.6



Block for Chart No 4041

Block for Chart No 4043

*To accompany Notice to Mariners 1786/18*

*On Chart 4039*

SUDONG SPECIAL PURPOSE ANCHORAGE  
(1°11'.2N 103°41'.6E)  
Entry into this area is prohibited to all vessels over  
47 metres high.

## **HYDROGRAPHIC NOTE - Instructions**

1. Mariners are requested to notify the Chief Hydrographer, Maritime and Port Authority of Singapore, when new or suspected dangers to navigation are discovered, changes are observed in aids to navigation or where corrections to nautical publications may be necessary. Reports, which cannot be confirmed or are lacking in certain details should not be withheld.
2. Any ambiguities of time, positioning and depth should be stressed and any firm expectation of being able to check the information provided on a following voyage should be mentioned.
3. Mariners using satellite position fixing systems, eg. GPS, should provide details of equipment and datum used (where applicable). Where bearings (true or magnetic) are taken visually or by radar to fix a position, it should include more than two objects in order to provide a check on its accuracy. A position may also be defined by bearing and distance from a conspicuous object eg. beacon, lighthouse etc.
4. The note should include a tracing or a digital image of the chart used and the details should be clearly marked.
5. Echo sounders frequently register greater depths than the advertised maximum depth for the equipment, eg. a trace appearing at 50 metres may be in fact be 550 metres or even 1050 metres for equipment whose maximum depth is 500 metres. Erroneous depths caused by 2nd transmission error can usually be recognised by the following:
  - (a) the tracing being weaker than normal for the depth registered,
  - (b) the trace appearing to pass through the transmission line,
  - (c) the feathery nature of the trace.
6. Upon receipt of a hydrographic note, a Notice to Mariners may be issued. The sender's vessel or name is quoted as the source unless the same information is also received in foreign Notices to Mariners.
7. Reports of shoals, uncharted dangers and defects in aids to navigation may also be made to the appropriate Singapore Port Operations Control Centre on VHF Channels 10, 12, 14, 68 or 73.

## HYDROGRAPHIC NOTE

To:

Chief Hydrographer  
Maritime and Port Authority of Singapore  
7B Keppel Road #20-00 Tanjong Pagar Complex  
Singapore 089055

Tel : (65) 6325 2027  
Fax : (65) 6226 1076  
Email : [hydrographic@mpa.gov.sg](mailto:hydrographic@mpa.gov.sg)

### **Sender's Contact Details** :

Date : .....

Name of Vessel : .....

Address of Sender : .....

Tel : ..... Fax : .....

Email : .....

### **Nature of Observation** :

General Location : .....

Subject : .....

Position : Lat. .... Long. ....

Charts Used : .....

Date & Time of Observation : .....

Details : .....

.....

.....

Attachment : .....

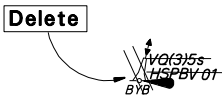
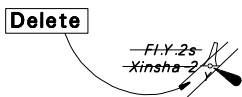
### **Equipment Used** :

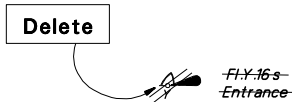
Type of Position Fixing : ..... GPS / DGPS ..... Others : .....

Type of Echo Sounder : .....

Name and Signature : .....

Ship's/Company's Stamp : .....

	103°35'E				
	1°15'N				
		<div>Delete</div> 			
		<div>Delete</div> 			
CORRECTION NO.	SNM EDN NO.	LAST CORRNO NO.	CHART NO.	Location on Chart	
36, 37	5/2018	23/2018	GSP1/SP1	X	

	103°35'E				
	1°20'N				
		<div>Delete</div> 			
CORRECTION NO.	SNM EDN NO.	LAST CORRNO NO.	CHART NO.	Location on Chart	
38	5/2018	37/2018	GSP1/SP1	X	

Caution: some computer printers might distort the tracings.  
Users are advised to check and, if necessary, adjust settings on the printer

