



## SINGAPOREAN NOTICES TO MARINERS

SECTION	CONTENT	Page
I	Affected Charts & Publications	1
II	Notices to Mariners and Chart Corrections Temporary and Preliminary Notices	3 4
III	Navigational Information Amendments to Publications	8 9
IV	Reprint of Maritime Safety Information	10
V	Extract of Admiralty Notices to Mariners for Dual-Badged Charts	12

The monthly Notices to Mariners contain information required to keep charts and publications published by the Hydrographic Division, Maritime and Port Authority of Singapore up-to-date.

Mariners are requested to notify the Chief Hydrographer, Maritime and Port Authority of Singapore, immediately of the discovery of new or suspected dangers to navigation, observed changes to aids to navigation and ways Singaporean Charts and Publications can be improved. The Hydrographic Note on the back page should be used for this purpose.

Detailed information of charts and publications (coverage of charts, latest editions and distributors) are available on the Maritime and Port Authority Website: [www.mpa.gov.sg](http://www.mpa.gov.sg)

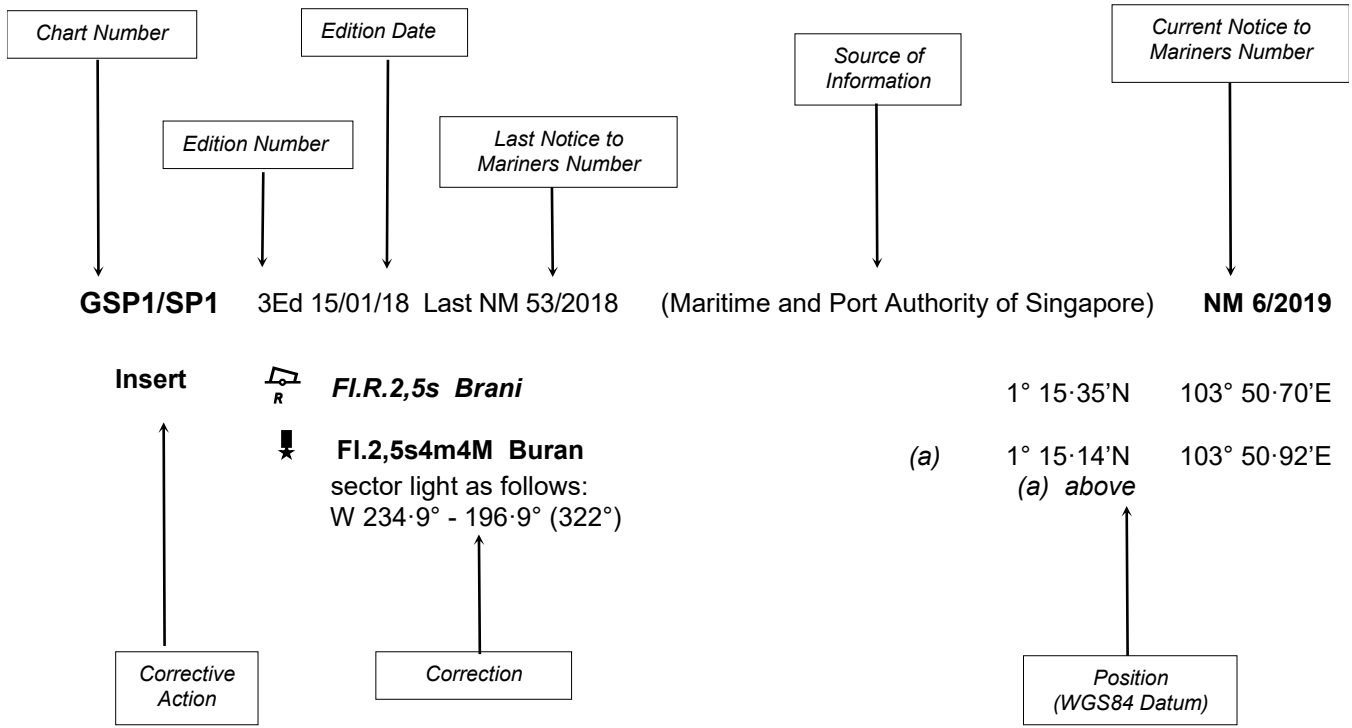
- [Singaporean Notice to Mariners](#)
- [Singaporean Charts](#)
- [Dual-Badged Charts](#)
- [Singapore ENC](#)
- [Malacca and Singapore Straits ENC](#)
- [Singapore Port Information](#)
- [Singapore Tide Tables](#)

### Contact information:

Hydrographic Division  
Maritime and Port Authority of Singapore  
7B Keppel Road  
#20-00 Tanjong Pagar Complex  
Singapore 089055  
Tel : (65) 6325 2027  
Fax : (65) 6226 1076  
Email : [hydrographic@mpa.gov.sg](mailto:hydrographic@mpa.gov.sg)

## EXPLANATION OF FORMAT

The elements of a typical chart correction are explained below.



Notes:

- a) Notice to Mariners number followed by:
  - T** indicates a Temporary Notice (eg. **NM 9T/2019**).
  - P** indicates a Preliminary Notice (eg. **NM 10P/2019**).
- b) Bearings are true reckoned clockwise from 000° to 359°; those relating to lights are from seaward.
- c) Heights and elevations are above Mean High Water Springs.

I  
**AFFECTED CHARTS AND PUBLICATIONS**

**INDEX OF AFFECTED CHARTS**

DESCRIPTION	NOTICE NO.	PAGE NO.
Singaporean Chart 202	*54	3
Singaporean Chart 503	*54	3
Temporary and Preliminary Notices	*55T, 56P	4 - 7
Singapore Port Marine Notices/Circulars	*57	8
Amendments to Publications	*58	9
Reprint of Maritime Safety Information	-	10 - 11
Extract of Admiralty Notices to Mariners for Dual-Badged Charts	-	12 - 16

\*Source: Maritime and Port Authority of Singapore

I  
**AFFECTED CHARTS AND PUBLICATIONS**

**INDEX OF NOTICES**

<b>NOTICE NO.</b>	<b>DESCRIPTION</b>	<b>PAGE NO.</b>
*54	Singaporean Chart 202	3
*54	Singaporean Chart 503	3
*55T, 56P	Temporary and Preliminary Notices	4 - 7
*57	Singapore Port Marine Notices/Circulars	8
*58	Amendments to Publications	9
-	Reprint of Maritime Safety Information	10 - 11
-	Extract of Admiralty Notices to Mariners for Dual-Badged Charts	12 - 16

\*Source: Maritime and Port Authority of Singapore

**II**  
**NOTICES TO MARINERS AND CHART CORRECTIONS**

<b>202</b>	8 Ed 15/9/16	Last NM 41/2019 (Maritime and Port Authority of Singapore)	<b>NM 54/2019</b>
<b>Insert</b>	legend, Racon(O), at lighthouse		1°19·81'N 104°24·34'E
-----			
<b>503</b>	5 Ed 15/8/14	Last NM 31/2019 (Maritime and Port Authority of Singapore)	<b>NM 54/2019</b>
<b>Insert</b>	legend, Racon(O), at lighthouse		1°19·81'N 104°24·34'E
-----			

## II

**TEMPORARY AND PRELIMINARY NOTICES**

<b>*(NM 55T/2019)</b>	<b>SUNKEN VESSEL IN WESTERN PETROLEUM 'A' ANCHORAGE (AWPA)</b>
<b>Description</b>	: The sunken vessel 'UWCON 3' is located at Latitude 1°14·226'N Longitude 103°47·969'E with least depth 24.5m below CD in Western Petroleum 'A' Anchorage (AWPA).
<b>Charts affected</b>	: Singaporean GSP1/SP1, 202, 501, Dual Badged 4035, 4040 and 4041
<b>Source</b>	: Maritime and Port Authority of Singapore

## II

**TEMPORARY AND PRELIMINARY NOTICES**

(NM 56P/2019)

**NEW CHANNELS, ANCHORAGE AREAS, PRECAUTIONARY AREAS,  
PILOT BOARDING PLACES AND BUOYAGE - INDONESIA (BATU AMPAR)**

1. Extensive changes have taken place in the approaches to Batu Ampar and Sekupang as follows:
2. West Batu Ampar, East Batu Ampar, West Sekupang and East Sekupang Terminal Channels have been established joining the following positions:

1°11.28'N,	103°54.52'E
1°11.15'N,	103°53.40'E
1°10.11'N,	103°54.47'E
1°09.05'N,	103°54.42'E
1°08.66'N,	103°54.49'E
1°08.07'N,	103°55.07'E
1°07.46'N,	103°55.38'E
1°07.50'N,	103°55.45'E
1°08.12'N,	103°55.13'E
1°08.72'N,	103°54.63'E
1°10.04'N,	103°54.83'E
1°09.91'N,	103°55.45'E
1°09.91'N,	103°59.80'E
1°10.00'N,	103°59.80'E
1°10.00'N,	103°59.42'E
1°11.60'N,	104°00.00'E
1°12.60'N,	104°00.00'E
1°12.51'N,	103°59.75'E
1°11.65'N,	103°59.75'E
1°10.30'N,	103°58.53'E
1°10.30'N,	103°55.45'E
1°11.28'N,	103°54.52'E

3. A channel to the Sea Trial Area and Anchorage Areas has been established joining the following positions:

1°09.25'N,	103°54.71'E
1°09.81'N,	103°55.60'E
1°09.20'N,	103°55.60'E
1°09.00'N,	103°54.67'E
1°09.25'N,	103°54.71'E

4. Precautionary areas have been established joining the following positions:

(a)

1°10.11'N,	103°54.47'E
1°10.84'N,	103°54.94'E
1°10.30'N,	103°55.45'E
1°09.91'N,	103°55.45'E
1°10.11'N,	103°54.47'E

(b)

1°10.65'N,	103°58.85'E
1°10.00'N,	103°59.42'E
1°10.30'N,	103°55.45'E
1°09.91'N,	103°55.45'E
1°10.11'N,	103°54.47'E
1°09.91'N,	103°59.42'E
1°09.91'N,	103°58.54'E
1°10.30'N,	103°58.53'E
1°10.65'N,	103°58.85'E

## II

## TEMPORARY AND PRELIMINARY NOTICES

(c) 1°09·22'N, 103°54·43'E  
 1°09·25'N, 103°54·43'E  
 1°09·00'N, 103°54·67'E  
 1°09·05'N, 103°54·42'E  
 1°09·22'N, 103°54·43'E

5. Pilot boarding places have been established in the following positions:

*West* 1°10·81'N, 103°54·37'E  
*East* 1°10·43'N, 103°59·09'E

6. New anchorage areas have been established at the following positions:

*C.I.Q.P Area* 1°10·53'N, 103°55·45'E  
 1°10·41'N, 103°55·45'E  
 1°10·41'N, 103°56·40'E  
 1°11·00'N, 103°56·40'E  
 1°10·53'N, 103°55·45'E

*General Cargo Anchorage* 1°11·00'N, 103°56·40'E  
 1°11·65'N, 103°57·65'E  
 1°10·41'N, 103°57·65'E  
 1°10·41'N, 103°56·40'E  
 1°11·00'N, 103°56·40'E

*Container Anchorage* 1°10·41'N, 103°57·65'E  
 1°10·41'N, 103°58·53'E  
 1°11·76'N, 103°58·53'E  
 1°11·65'N, 103°57·65'E  
 1°10·41'N, 103°57·65'E

*Tanker Anchorage* 1°11·76'N, 103°58·53'E  
 1°10·41'N, 103°58·53'E  
 1°11·65'N, 103°59·65'E  
 1°11·88'N, 103°59·65'E  
 1°11·76'N, 103°58·53'E

*Sea Trial Anchorage* 1°09·20'N, 103°56·32'E  
 1°09·81'N, 103°56·32'E  
 1°09·81'N, 103°55·60'E  
 1°09·20'N, 103°55·60'E  
 1°09·20'N, 103°56·32'E

*Waiting Anchorage* 1°09·81'N, 103°56·32'E  
 1°09·20'N, 103°56·32'E  
 1°09·20'N, 103°57·05'E  
 1°09·81'N, 103°57·05'E  
 1°09·81'N, 103°56·32'E



## II

## TEMPORARY AND PRELIMINARY NOTICES

<i>Transshipment Anchorage</i>	1°09·81'N, 1°09·20'N, 1°09·20'N, 1°09·81'N, 1°09·81'N,	103°57·05'E 103°57·05'E 103°57·95'E 103°57·95'E 103°57·05'E
<i>Multipurpose Anchorage</i>	1°09·20'N, 1°09·20'N, 1°09·81'N, 1°09·81'N, 1°09·20'N,	103°57·95'E 103°58·80'E 103°58·80'E 103°57·95'E 103°57·95'E

7. Light-buoys have been established in the following positions:

<b>Colour</b>	<b>Designation</b>	<b>Position</b>	
	<i>MPMT1 Sekupang</i>	1° 11·16'N,	103° 54·06'E
Green	<i>West No 1</i>	1° 10·14'N,	103° 54·34'E
Red	<i>West No 2</i>	1° 10·30'N,	103° 55·45'E
Green	<i>West No 5</i>	1° 08·07'N,	103° 54·97'E
Yellow	<i>Moratelindo</i>	1° 09·81'N,	103° 54·87'E
Yellow		1° 09·27'N,	103° 55·69'E
Green	<i>East No 1</i>	1° 11·65'N,	103° 59·75'E
Red	<i>East No 2</i>	1° 10·09'N,	103° 59·45'E
Green	<i>East No 3</i>	1° 09·91'N,	103° 58·80'E
Green	<i>East No 5</i>	1° 09·88'N,	103° 59·71'E
	<i>RWVS 2 Batu Ampar</i>	1° 11·92'N,	104° 00·00'E

8. Aids to navigation in the area may be altered or moved owing to these extensive changes.
9. Mariners are advised to navigate with caution.
10. These changes will be included in the upcoming new edition Singaporean and Dual Badged Charts

Charts affected : Singaporean GSP1/SP1, 202 and Dual Badged 4041

---

Source : Indonesian Notice No. 10/136-137(P)/2019 & Admiralty Notice No. 17/2106(P)/2019

**III**  
**NAVIGATIONAL INFORMATION**

**\*(NM 57/2019)**

**SINGAPORE PORT MARINE NOTICES/CIRCULARS**

The Port Marine Notices/Circulars shortlisted below would be of particular interest to Mariners. Details and complete list of Port Marine Notices/Circulars are available at this link:

<http://www.mpa.gov.sg/web/portal/home/port-of-singapore/circulars-and-notices>

**PMN No.**

**Subject**

30/2019	Reclamation work at Pulau Tekong
31/2019	Mooring and unmooring of vessels off Pulau Tekong
33/2019	Dredging works in the West Jurong Channel
36/2019	Reclamation work at Tuas View, off Temasek Fairway
37/2019	Mooring and unmooring of vessels at Tuas Finger One project area

---

\*Source: Maritime and Port Authority of Singapore

### III AMENDMENTS TO PUBLICATIONS

\*(NM 58/2019) UPDATING OF PUBLICATION “SINGAPORE PORT INFORMATION 2018/2019”

#### CHARACTERISTICS OF AIDS TO NAVIGATION

1. Page 136

##### SAKRA BASIN

Insert the following:

Name of Beacon/ Buoy	Position Lat. N Long. E Deg Min	Structure, Colour & Shape	Light Characteristic	Owner
PCS 5 Buoy	01°15·834' 103°42·891'	Yellow pillar	Fl.Y.6s	Petrochemical Corporation of Singapore Pte Ltd

2. Page 156

##### NAME OF LIGHTHOUSES

Amend the following:

Name of Beacon/ Buoy	Position Lat. N Long. E Deg Min	Structure, Colour & Shape	Light Characteristic	Owner
Horsburgh Lighthouse	01°19·814' 104°24·337'	White round tower, with black bands, 29m. Radar Reflector, Racon Morse Code 'O' (3 & 10cm) AIS	Fl.W.10s31m20M	MPA

\*Source: Maritime and Port Authority of Singapore

## IV REPRINT OF MARITIME SAFETY INFORMATION

The following Maritime Safety Information have been shortlisted, as they would be of particular interest to mariners.

TT175

VESSELS IN EAST JOHOR STRAIT ARE ADVISED TO NAVIGATE WITH PARTICULAR ALERTNESS AND CAUTION WHEN NEAR THE PROJECT AREAS OFF PULAU TEKONG, CHANGI AND MALANG PAPAN AS SHALLOW WATER AREAS EXIST. VESSELS ARE REMINDED TO PROCEED AT A SAFE SPEED AND MAINTAIN A PROPER LOOK-OUT, PARTICULARLY FOR TUGS AND BARGES NAVIGATING NEAR THE PROJECT AREAS AND PASSENGER FERRIES CROSSING BETWEEN CHANGI AND PULAU TEKONG AND VICINITY OF PASIR GUDANG.

TT273

ALL VESSELS ARE ADVISED TO NAVIGATE WITH CAUTION, COMPLY WITH THE COLREGS, MAINTAIN VHF RADIO WATCH AND LISTEN TO TRAFFIC INFORMATION WHEN NAVIGATING IN THE SINGAPORE STRAIT AND PORT WATERS. MARINERS ARE ALSO ADVISED TO KEEP A GOOD LOOKOUT OF FREQUENT FERRIES CROSSING THE SINGAPORE STRAIT.

TT363 (AMENDED ON 140821UTC APRIL 2019)

MARINERS ARE REMINDED NOT TO ANCHOR IN ALL AREAS IN THE TSS, INCLUDING PRECAUTIONARY AREAS OF THE STRAITS OF MALACCA AND SINGAPORE AS WELL AS BETWEEN THE LANDWARD LIMITS OF THE TSS AND APPROACHES TO THE PORTS. VESSELS ENTERING ANY PORT IN ANY LITTORAL STATES ARE TO ANCHOR IN THE ANCHORAGES DESIGNATED BY THE RESPECTIVE LITTORAL STATES. MARINERS ARE ALSO REMINDED THAT EVERY CARE SHOULD BE TAKEN TO AVOID ANCHORING IN THE VICINITY OF SUBMARINE CABLES OR PIPELINES.

TT399

VESSELS ARRIVING TO SINGAPORE OR TRANSITING THROUGH THE STRAIT ARE RECOMMENDED TO UPDATE THEIR DESTINATION ACCURATELY IN THE AIS TO ENHANCE SITUATIONAL AWARENESS FOR OTHER TRAFFIC IN THE VICINITY. EG: SG-PEBGB FOR PILOT EASTERN BOARDING GROUND BRAVO.

TT418

WEST BOUND DEEP DRAFT VESSELS AND VLCCS ARE REMINDED TO COMPLY WITH THE RULES OF VESSELS NAVIGATING THROUGH THE STRAITS OF MALACCA AND SINGAPORE(SOMS). THEY SHALL ALLOW FOR AN UKC OF AT LEAST 3.5 METRES AT ALL TIMES DURING THE ENTIRE PASSAGE THROUGH THE SOMS AND AS FAR AS IT IS SAFE & PRACTICABLE, PROCEED AT A SPEED OF NOT MORE THAN 12 KTS OVER THE GROUND IN THE WESTBOUND LANE OF THE SINGAPORE STRAIT (BETWEEN SOUTH OF ST JOHN'S ISLAND & RAFFLES LIGHTHOUSE).

THEY ARE ADVISED TO BROADCAST, 8 HOURS BEFORE ENTERING THE TSS, NAVIGATIONAL INFORMATION GIVING NAME, DEADWEIGHT, DRAUGHT, SPEED AND TIMES OF PASSING HORSBURGH LIGHTHOUSE AND RAFFLES LIGHTHOUSE.

TT426

ALL MARINERS ARE REMINDED TO NAVIGATE WITH CAUTION IN THE PRECAUTIONARY AREAS AND TSS, MAINTAIN A GOOD LOOKOUT FOR CROSSING TRAFFIC. VESSELS INTENDING TO CROSS THE TSS SHALL DO SO ONLY WHEN IT IS SAFE AND SHALL AT ALL TIMES COMPLY WITH THE COLREGS.

TT430(AMENDED ON 090050UTC APRIL 2019)

THE FOLLOWING ATONS AIS ARE TEMPORARILY REMOVED FOR UPGRADING.

ATONS WITH AIS TEMPORARILY REMOVED FOR UPGRADING:

1. ANGLER BUOY
2. RASU BUOY

MARINERS ARE ADVISED TO NAVIGATE WITH CAUTION

TT440

A NUMBER OF UNKNOWN VESSELS ARE OBSERVED ANCHORED IN THE TSS/PRECAUTIONARY AREA SOUTH OF TG. RAMUNIA AT APPROXIMATE POSITION 01°17.91'N, 104°14.92'E.

ALL VESSELS ARE ADVISED TO KEEP A GOOD LOOK OUT AND PROCEED WITH CAUTION WHEN PASSING THIS AREA IN THE SINGAPORE STRAIT.

TT514 AMENDED ON 11020730UTC FEB 2019

DAMAGED AND CAPSIZED VESSEL 'STAR CENTURION' AT APPROXIMATE POSITION LAT 01°24'N LONG 104°35'E. ALL PASSING VESSELS ARE ADVISED TO KEEP WELL CLEAR AND NAVIGATE WITH CAUTION.

TT521

A SUNKEN VESSEL WAS LOCATED AT 01°20.03'N 104°21.41'E. THE LEAST DEPTH IS 41.0 METRES BELOW CHART DATUM.

TT527

RACON DELTA RADAR SIGNAL TRANSMISSION IN POSITION LAT 01°03.60'N LONG 103°38.85'E IS REPORTED NOT WORKING. ALL VESSELS ARE ADVISED TO NAVIGATE WITH EXTRA CAUTION.

**IV**  
**REPRINT OF MARITIME SAFETY INFORMATION**

TT535 (AMENDED 250915SGT APRIL 2019)

AN UNAUTHORISED BOARDING WAS REPORTED ON 240510SGT APRIL 2019 IN POSITION 01°10.63'N 103°34.30'E. ALL VESSELS PASSING THE VICINITY ARE ADVISED TO KEEP A VIGILANT WATCH AND NAVIGATE WITH EXTRA CAUTION.

TT536 (AMENDED 250915SGT APRIL 2019)

AN UNAUTHORISED BOARDING WAS REPORTED ON 250530SGT APRIL 2019 IN POSITION 01°13.33'N 103°31.02'E. ALL VESSELS PASSING THE VICINITY ARE ADVISED TO KEEP A VIGILANT WATCH AND NAVIGATE WITH EXTRA CAUTION.

TT961

VESSELS INTENDING TO CROSS THE TRAFFIC SEPARATION SCHEME (TSS) OR PRECAUTIONARY AREAS IN THE SINGAPORE STRAIT DURING THE HOURS OF DARKNESS ARE RECOMMENDED TO DISPLAY THE NIGHT SIGNALS CONSISTING OF 3 ALL ROUND GREEN LIGHTS IN A VERTICAL LINE AS DETAILED IN THE MARITIME AND PORT AUTHORITY OF SINGAPORE'S PORT MARINE CIRCULAR, 04 OF 2013 DATED 7 MAY 2013.

SR123 (AMENDED 170105UTC APRIL 2019)

ALL VESSELS ARE ADVISED TO MAINTAIN A CONSTANT VISUAL AND RADAR WATCH FOR SMALL CRAFT AND REPORT ANY SUSPICIOUS ACTIVITIES IN THE SINGAPORE STRAIT TO VTIS SINGAPORE.

---

ISSUED BY SINGAPORE PORT OPERATIONS CONTROL CENTRE (as at 29<sup>th</sup> Apr 2019)

**V**  
**EXTRACT OF ADMIRALTY NOTICES TO MARINERS**  
**FOR DUAL-BADGED CHARTS**

These notices can also be accessed directly from UKHO Website:

<http://www.admiralty.co.uk/maritime-safety-information/admiralty-notices-to-mariners>

**1880 SINGAPORE - Obstruction.**

Source: Maritime and Port Authority of Singapore

**Chart 4042** [ *previous update 1276/19* ] WGS84 DATUM

Insert  *Obstn* 1° 19.78'N, 104° 03.50'E

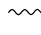
**Chart 4043** [ *previous update 885/19* ] WGS84 DATUM

Insert  *Obstn* 1° 19.78'N, 104° 03.50'E

**1909 SINGAPORE - Submarine cable. Legend.**

Source: Maritime and Port Authority of Singapore

**Chart 4033** [ *previous update New Edition 20/9/2018* ] WGS84 DATUM

Insert submarine cable, , joining:

1° 18.549'N, 103° 40.928'E  
 1° 17.819'N, 103° 40.972'E  
 1° 17.790'N, 103° 40.962'E  
 (a) 1° 17.764'N, 103° 40.949'E  
 (b) 1° 17.438'N, 103° 40.533'E  
 1° 17.358'N, 103° 40.478'E  
 1° 17.265'N, 103° 40.455'E  
 1° 17.173'N, 103° 40.464'E  
 1° 17.055'N, 103° 40.514'E

Insert legend, *Cable Tunnel (buried)*, along: (a)-(b) above

**1910 SINGAPORE - Depth.**

Source: Maritime and Port Authority of Singapore

**Chart 4041** [ *previous update New Edition 27/12/2018* ] WGS84 DATUM

Insert depth, *16*<sub>3</sub> 1° 17.95'N, 103° 56.45'E


**1932 SINGAPORE - Depths, Obstruction. Wrecks. Buoy.**

Source: Maritime and Port Authority of Singapore

**Chart 4031** [ *previous update 1071/19* ] WGS84 DATUM

Insert depth, *17*<sub>9</sub> 1° 11.051'N, 103° 42.426'E

**Chart 4032** [ *previous update 5263/19* ] WGS84 DATUM

Insert  *Obstn* 1° 12.820'N, 103° 43.576'E





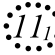



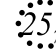
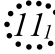
depth, *16*<sub>3</sub> (a) 1° 15.617'N, 103° 45.802'E

Delete depth, *17*, close W of: (a) above

**V**  
**EXTRACT OF ADMIRALTY NOTICES TO MARINERS**  
**FOR DUAL-BADGED CHARTS**

These notices can also be accessed directly from UKHO Website:


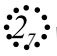


<http://www.admiralty.co.uk/maritime-safety-information/admiralty-notices-to-mariners>

Replace	 Wk with  Wk	1° 13·023'N, 103° 43·834'E
<b>Chart 4034</b> [ <i>previous update 5263/19</i> ] WGS84 DATUM		
Insert	depth, <i>16</i> <sub>3</sub>	(a) 1° 15·617'N, 103° 45·802'E
Delete	depth, <i>17</i> , close W of:	(a) above
<b>Chart 4035</b> [ <i>previous update 872/19</i> ] WGS84 DATUM		
Insert	depth, <i>16</i> <sub>3</sub>	(a) 1° 15·617'N, 103° 45·802'E
Delete	depth, <i>17</i> , close W of:	(a) above
<b>Chart 4038</b> [ <i>previous update 1071/19</i> ] WGS84 DATUM		
Replace	 Wk with,  Wk	1° 12·76'N, 103° 35·08'E
Delete	symbol, mooring buoy, <i>FL.Y.3s</i>	1° 15·57'N, 103° 38·35'E
<b>Chart 4039</b> [ <i>previous update 1071/19</i> ] WGS84 DATUM		
Insert	depth, <i>17</i> <sub>9</sub>	(a) 1° 11·05'N, 103° 42·43'E
Delete	depth, <i>18</i> , close SE of:	(a) above
Insert	 <i>Obstn</i>	1° 12·82'N, 103° 43·58'E
Replace	 Wk with  Wk	1° 13·02'N, 103° 43·83'E
	depth, <i>19</i> <sub>4</sub> , with depth, <i>19</i> <sub>6</sub>	1° 10·20'N, 103° 42·77'E
	 Wk with,  Wk	1° 12·76'N, 103° 35·08'E
<b>Chart 4040</b> [ <i>previous update 1071/19</i> ] WGS84 DATUM		
Insert	depth, <i>17</i> <sub>9</sub>	(a) 1° 11·05'N, 103° 42·43'E
Delete	depth, <i>18</i> , close SE of:	(a) above
Insert	 <i>Obstn</i>	1° 12·82'N, 103° 43·58'E
	depth, <i>16</i> <sub>3</sub>	(b) 1° 15·62'N, 103° 45·80'E
Delete	depth, <i>17</i> , close SW of:	(b) above

**V**  
**EXTRACT OF ADMIRALTY NOTICES TO MARINERS**  
**FOR DUAL-BADGED CHARTS**

These notices can also be accessed directly from UKHO Website:

<http://www.admiralty.co.uk/maritime-safety-information/admiralty-notices-to-mariners>

Replace	 Wk, with  Wk	1° 13·02'N, 103° 43·83'E
	depth, <i>19<sub>4</sub></i> , with depth, <i>19<sub>6</sub></i>	1° 10·20'N, 103° 42·77'E
	 Wk, with  Wk	1° 12·76'N, 103° 35·08'E
Delete	symbol, mooring buoy, <i>Fl.Y.3s</i>	1° 15·57'N, 103° 38·35'E

**1978 SINGAPORE - NM Block.**

Source: Maritime and Port Authority of Singapore

**Chart 4038** [ *previous update 1932/19* ] WGS84 DATUM

Insert the accompanying block, centred on: 1° 18·1'N, 103° 36·7'E

**Chart 4040** [ *previous update 1932/19* ] WGS84 DATUM

Insert the accompanying block, centred on: 1° 18·1'N, 103° 36·7'E

**1939(P)/19 SINGAPORE - Light.**

Source: Maritime and Port Authority of Singapore

1. The sectors at Semakau light in position 1°12·59'N, 103°46·66'E have been amended as follows:

G16·5° - 17·2° (0·7)°

W17·2° - 18·1° (0·9)°

R18·1° - 19·7° (1·6)°

2. These changes will be included in the next New Editions of charts 4035, 4036, 4040 and 8176. (WGS84 DATUM)

**Charts affected - 3833 - 4035 - 4036 - 4039 - 4040 - 8176**

**2035(P)/19 INDONESIA - Sumatera - channels. Anchorage areas. Precautionary areas. Pilot boarding places. Buoyage. Virtual aids to navigation.**

Source: Indonesian Notices 10/136-137(P)/19

1. Extensive changes have taken place in the approaches to Batuampar and Sekupng which are shown on the accompanying diagram and as follows:

2. West Batu Ampar Terminal channel has been established between the following positions:

1° 09·96'N, 103° 59·80'E

1° 09·96'N, 103° 59·42'E

1° 10·11'N, 103° 58·53'E

1° 10·11'N, 103° 55·45'E

1° 10·44'N, 103° 54·68'E

1° 11·22'N, 103° 53·99'E



**V**  
**EXTRACT OF ADMIRALTY NOTICES TO MARINERS**  
**FOR DUAL-BADGED CHARTS**

These notices can also be accessed directly from UKHO Website:

<http://www.admiralty.co.uk/maritime-safety-information/admiralty-notices-to-mariners>

3. East Batu Ampar Terminal channel has been established between the following positions:
  - 1° 09·96'N, 103° 59·80'E
  - 1° 09·96'N, 103° 59·42'E
  - 1° 10·11'N, 103° 58·96'E
  - 1° 11·61'N, 103° 59·87'E
  - 1° 12·55'N, 103° 59·87'E
4. West Sekupang Terminal channel has been established between the following positions:
  - 1° 07·48'N, 103° 55·41'E
  - 1° 08·09'N, 103° 55·10'E
  - 1° 08·70'N, 103° 54·54'E
  - 1° 10·07'N, 103° 54·65'E
  - 1° 10·37'N, 103° 54·73'E
  - 1° 11·22'N, 103° 53·99'E
5. East Sekupang Terminal channel has been established between the following positions:
  - 1° 07·48'N, 103° 55·41'E
  - 1° 08·09'N, 103° 55·10'E
  - 1° 08·70'N, 103° 54·54'E
  - 1° 10·07'N, 103° 54·65'E
  - 1° 10·37'N, 103° 54·73'E
  - 1° 10·11'N, 103° 55·45'E
  - 1° 10·11'N, 103° 58·96'E
  - 1° 11·61'N, 103° 59·87'E
  - 1° 12·55'N, 103° 59·87'E
6. A channel to the Sea Trial Area and Anchorage Areas has been established between the following positions:
  - 1° 09·51'N, 103° 55·60'E
  - 1° 09·13'N, 103° 54·69'E
7. Precautionary areas have been established, centred on following positions:
  - No1*            1° 10·28'N, 103° 55·03'E
  - No2*            1° 09·13'N, 103° 54·56'E
  - No3*            1° 10·19'N, 103° 58·87'E
8. Pilot boarding places have been established in the following positions:
  - West*          1° 10·71'N, 103° 54·37'E
  - East*          1° 10·43'N, 103° 59·09'E
9. New anchorage areas have been established, centred on the following positions:
  - C,I,Q,P Area*            1° 10·57'N, 103° 55·97'E
  - General Cargo*        1° 10·85'N, 103° 57·00'E
  - Anchorage*
  - Container Anchorage*    1° 11·05'N, 103° 58·10'E
  - Tanker Anchorage*      1° 11·38'N, 103° 58·96'E
  - Sea Trial Anchorage*     1° 09·50'N, 103° 55·95'E
  - Waiting Anchorage*     1° 09·50'N, 103° 56·68'E
  - Transshipment Anchorage* 1° 09·50'N, 103° 57·49'E
  - Multipurpose Anchorage* 1° 09·50'N, 103° 58·37'E

**V**  
**EXTRACT OF ADMIRALTY NOTICES TO MARINERS**  
**FOR DUAL-BADGED CHARTS**

These notices can also be accessed directly from UKHO Website:

<http://www.admiralty.co.uk/maritime-safety-information/admiralty-notices-to-mariners>

10. Light-buoys have been established between the following positions:

<i>Colour</i>	<i>Designation</i>	<i>Position</i>
	<i>MPMT1 Sekupang</i>	1° 11·16'N, 103° 54·06'E
Green	<i>West No 1</i>	1° 10·14'N, 103° 54·34'E
Red	<i>West No 2</i>	1° 10·30'N, 103° 55·45'E
Green	<i>West No 5</i>	1° 08·07'N, 103° 54·97'E
Yellow	<i>Moratelindo</i>	1° 09·81'N, 103° 54·87'E
Yellow		1° 09·27'N, 103° 55·69'E
Green	<i>East No 1</i>	1° 11·65'N, 103° 59·75'E
Red	<i>East No 2</i>	1° 10·09'N, 103° 59·45'E
Green	<i>East No 3</i>	1° 09·91'N, 103° 58·80'E
Green	<i>East No 5</i>	1° 09·88'N, 103° 59·71'E
	<i>RWVS 2 Batu Ampar</i>	1° 11·92'N, 104° 00·00'E

11. Aids to navigation in the area may be altered or moved owing to these extensive changes.

12. Mariners are advised to navigate with caution in the area.

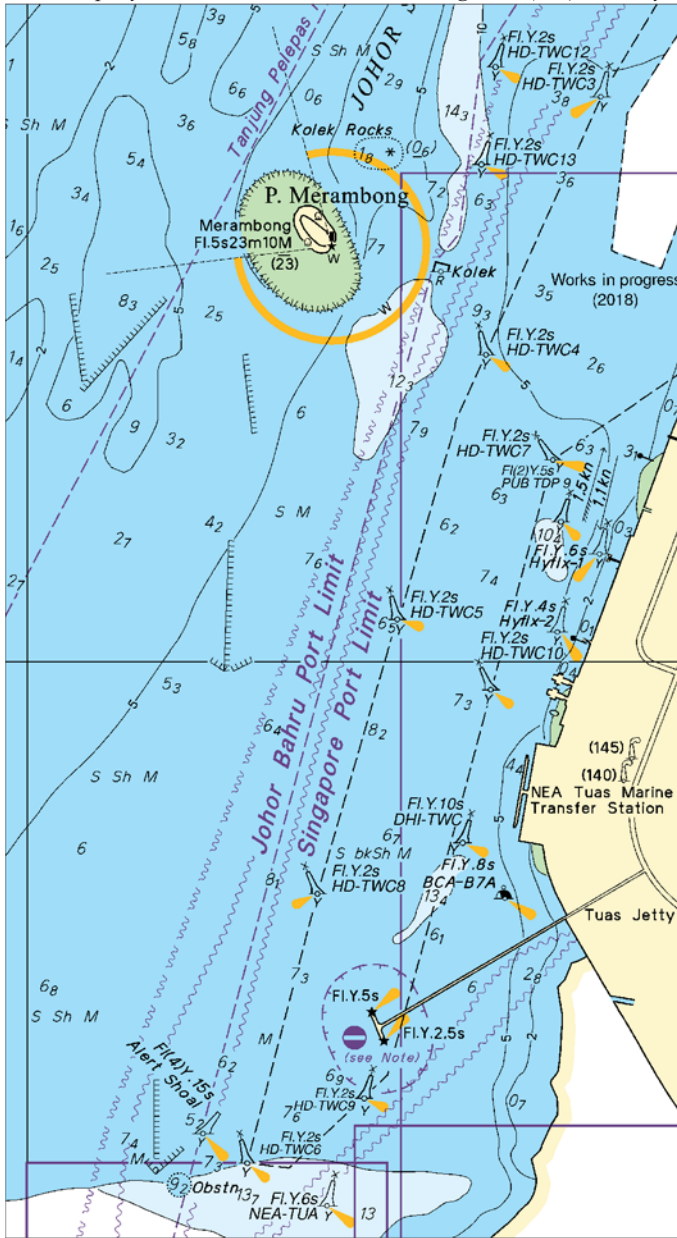
13. These changes will be included in the next New Edition of Chart 4041, 5524 and 5527.  
(WGS84 DATUM)

**Charts affected - 4041 - 5524 - 5527**

---

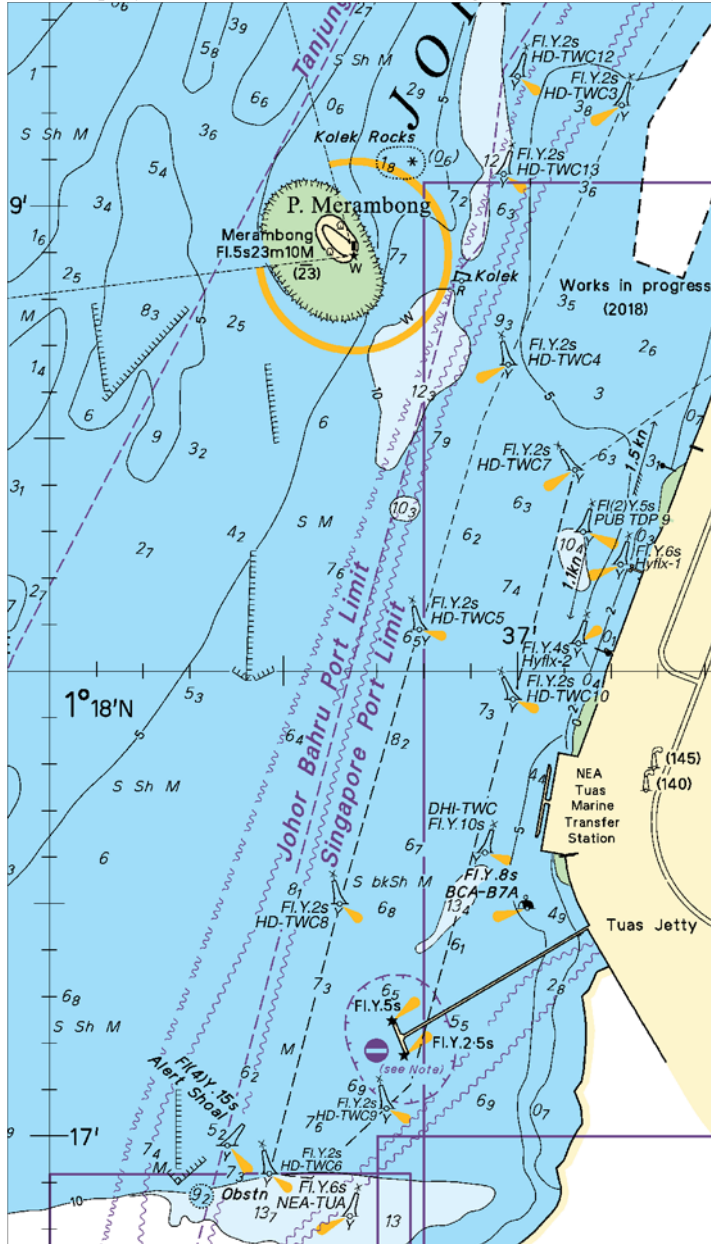
Updated to Admiralty Notices to Mariners No. 17 of 2019 dated 25<sup>th</sup> April 2019

To accompany Notice to Mariners 1978/19. Image Size (mm) 163.1 by 89.5

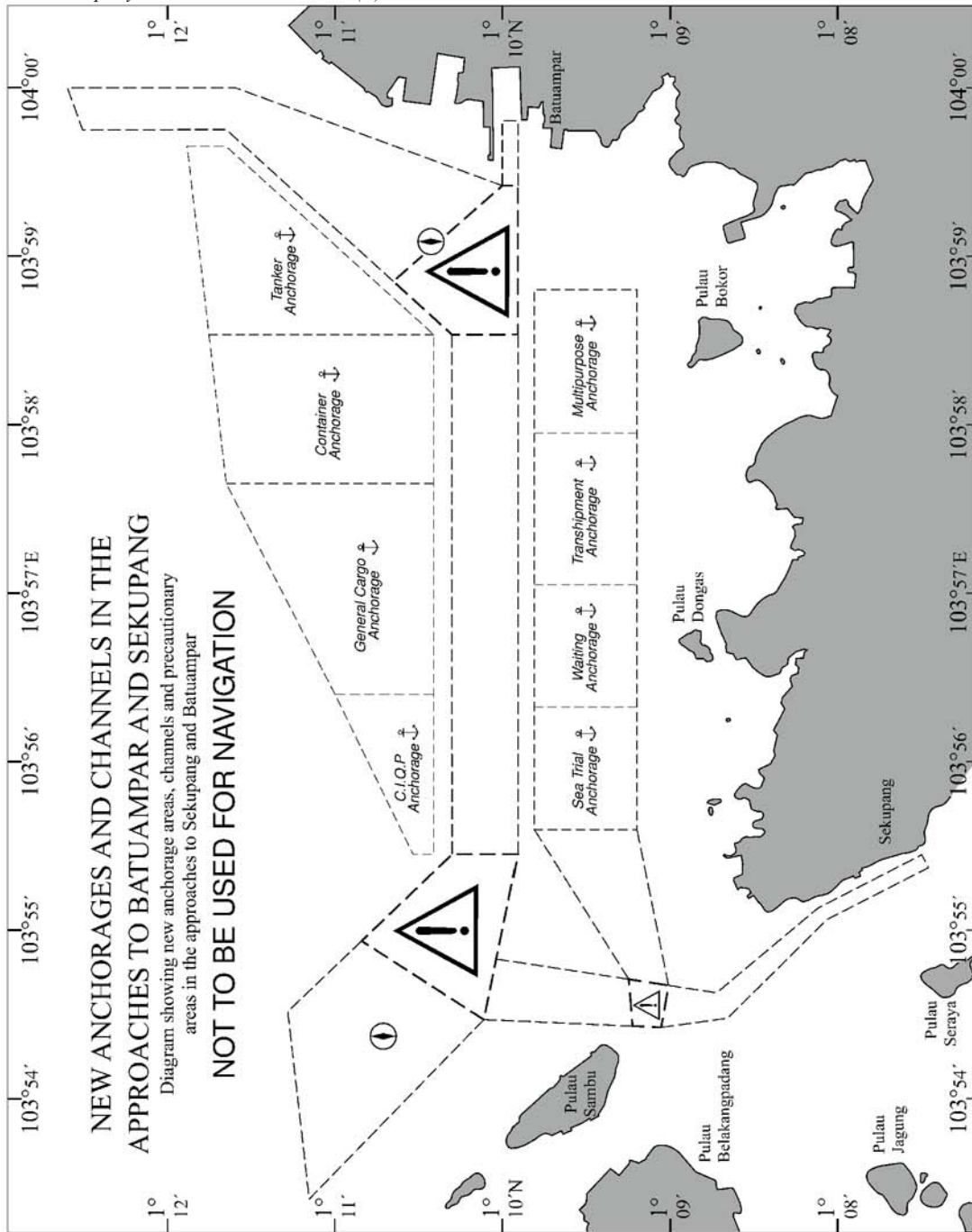


Block for Chart No 4040

To accompany Notice to Mariners 1978/19. Image Size (mm) 164.4 by 93.9



Block for Chart No 4038



## HYDROGRAPHIC NOTE - Instructions

1. Mariners are requested to notify the Chief Hydrographer, Maritime and Port Authority of Singapore, when new or suspected dangers to navigation are discovered, changes are observed in aids to navigation or where corrections to nautical publications may be necessary. Reports, which cannot be confirmed or are lacking in certain details should not be withheld.
2. Any ambiguities of time, positioning and depth should be stressed and any firm expectation of being able to check the information provided on a following voyage should be mentioned.
3. Mariners using satellite position fixing systems, eg. GPS, should provide details of equipment and datum used (where applicable). Where bearings (true or magnetic) are taken visually or by radar to fix a position, it should include more than two objects in order to provide a check on its accuracy. A position may also be defined by bearing and distance from a conspicuous object eg. beacon, lighthouse etc.
4. The note should include a tracing or a digital image of the chart used and the details should be clearly marked.
5. Echo sounders frequently register greater depths than the advertised maximum depth for the equipment, eg. a trace appearing at 50 metres may be in fact be 550 metres or even 1050 metres for equipment whose maximum depth is 500 metres. Erroneous depths caused by 2nd transmission error can usually be recognised by the following:
  - (a) the tracing being weaker than normal for the depth registered,
  - (b) the trace appearing to pass through the transmission line,
  - (c) the feathery nature of the trace.
6. Upon receipt of a hydrographic note, a Notice to Mariners may be issued. The sender's vessel or name is quoted as the source unless the same information is also received in foreign Notices to Mariners.
7. Reports of shoals, uncharted dangers and defects in aids to navigation may also be made to the appropriate Singapore Port Operations Control Centre on VHF Channels 10, 12, 14, 68 or 73.

## HYDROGRAPHIC NOTE

To:

Chief Hydrographer  
Maritime and Port Authority of Singapore  
7B Keppel Road #20-00 Tanjong Pagar Complex  
Singapore 089055

Tel : (65) 6325 2027  
Fax : (65) 6226 1076  
Email : [hydrographic@mpa.gov.sg](mailto:hydrographic@mpa.gov.sg)

### **Sender's Contact Details** :

Date : .....

Name of Vessel : .....

Address of Sender : .....

Tel : ..... Fax : .....

Email : .....

### **Nature of Observation** :

General Location : .....

Subject : .....

Position : Lat. .... Long. ....

Charts Used : .....

Date & Time of Observation : .....

Details :  
.....  
.....  
.....

Attachment : .....

### **Equipment Used** :

Type of Position Fixing : ..... GPS / DGPS ..... Others : .....

Type of Echo Sounder : .....

Name and Signature : .....

Ship's/Company's Stamp : .....

104°20'E

1°20'N

Insert

Racon (O)

AIS  
HORSBURGH  
LIGHTHOUSE  
Fl.10s3Im20M  
TR(50)



CORRECTION NO.	SNM EDN NO.	LAST CORR NO.	CHART NO.	Location on Chart		
54	5/2019	41/2019	202			X

Caution: some computer printers might distort the tracings.  
Users are advised to check and, if necessary, adjust settings on the printer



104°25'E

1°20'N

**Insert**

Racon (O)

F1.10s31m20M  
HORNBURGH  
LIGHTHOUSE  
TR(50)  
AIS



CORRECTION NO.	SNM EDN NO.	LAST CORR NO.	CHART NO.	Location on Chart		
54	5/2019	31/2019	503		X	

Caution: some computer printers might distort the tracings.  
Users are advised to check and, if necessary, adjust settings on the printer