



SINGAPOREAN NOTICES TO MARINERS

	CONTENT	Page
I	Index of Charts & Publications	207
II	New Publications	210
	Notices to Mariners and Chart Corrections	214
	Temporary and Preliminary Notices	215
III	Navigational Information	216
	Amendments to Publications	223
IV	Reprint of Radio Navigational Warnings	224
V	Reprint of Admiralty Notices to Mariners for Dual Badged Charts	226

The monthly Notices to Mariners contain corrective information affecting charts published by the Hydrographic Department, Maritime and Port Authority of Singapore. The information contained in these Notices should be updated on the charts affected. Notices under Section II apply only to the particular Singaporean Chart(s) indicated.

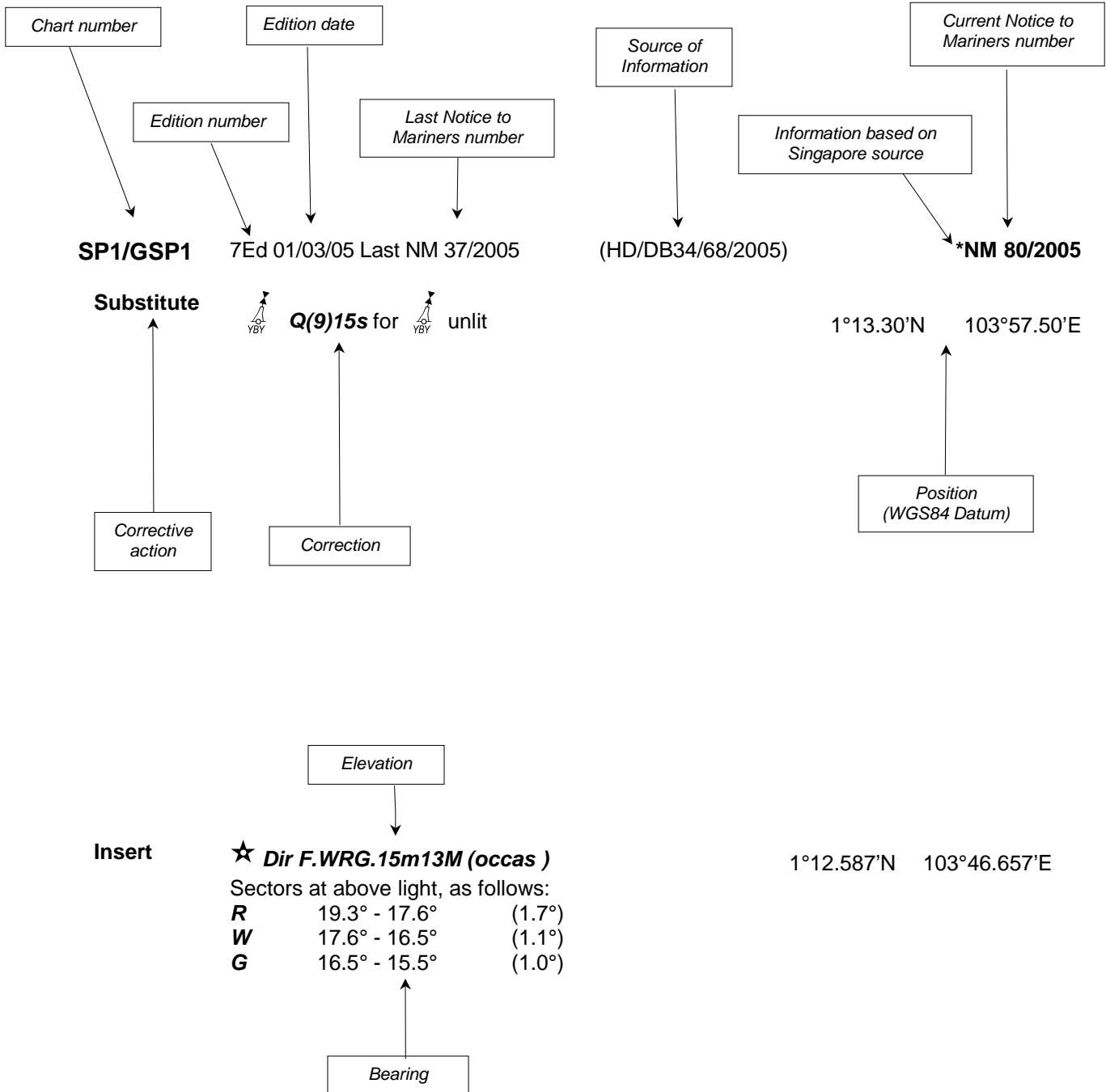
Mariners are requested to notify the Chief Hydrographer, Maritime and Port Authority of Singapore, immediately on the discovery of new dangers or suspected dangers to navigation and of changes or defects in aids to navigation. See Hydrographic Note on back page.

With effect from 1st January 2007, we would no longer provide hardcopies of Singaporean Notices to Mariners (SNM). The monthly SNM can be accessed directly through MPA website, <http://www.mpa.gov.sg/inforcentre/publications/noticesmari.htm>
This service is offered free of charge.

Hydrographic Department
Maritime and Port Authority of Singapore
P.O. Box 313
PSA Building Post Office
Singapore 911141
Tel : (65) 6375 1550
Fax : (65) 6278 7646

EXPLANATION OF FORMAT

The elements of a typical chart correction are explained below.



Notes:

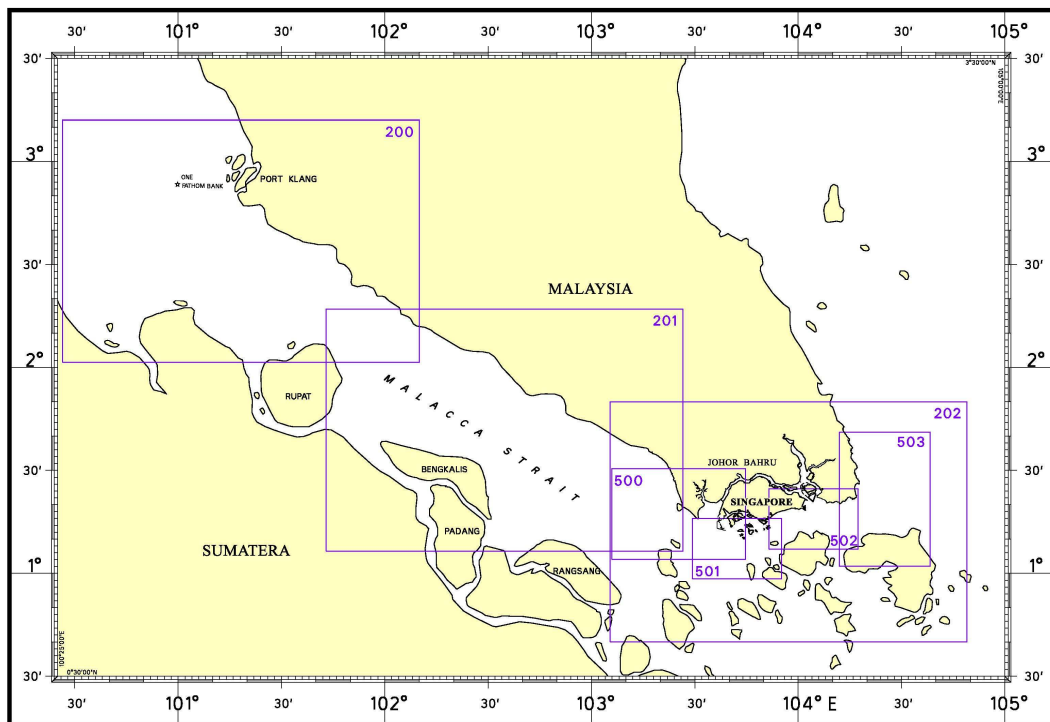
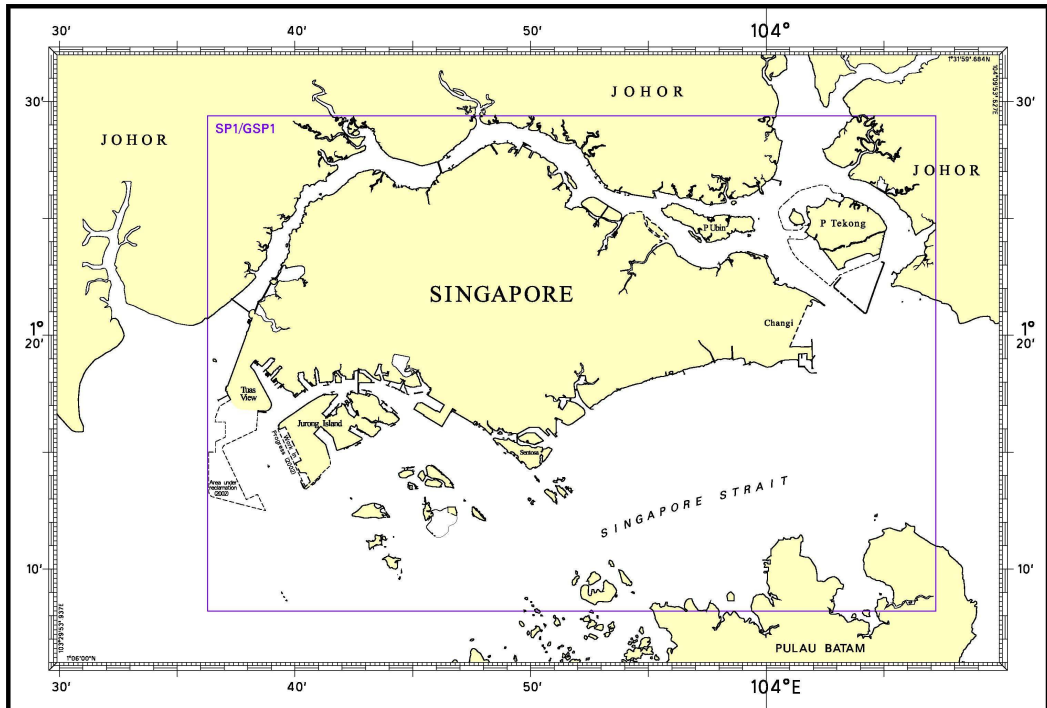
- a) Notice to Mariners number followed by:
 - T** indicates a Temporary Notice (eg. ***NM 80T/2005**).
 - P** indicates a Preliminary Notice (eg. ***NM 80P/2005**).
- b) Bearings are referred to True Compass in degrees clockwise from 000° to 359°. Bearings related to lights are from seaward.
- c) Heights and elevations are above Mean High Water Springs.

I

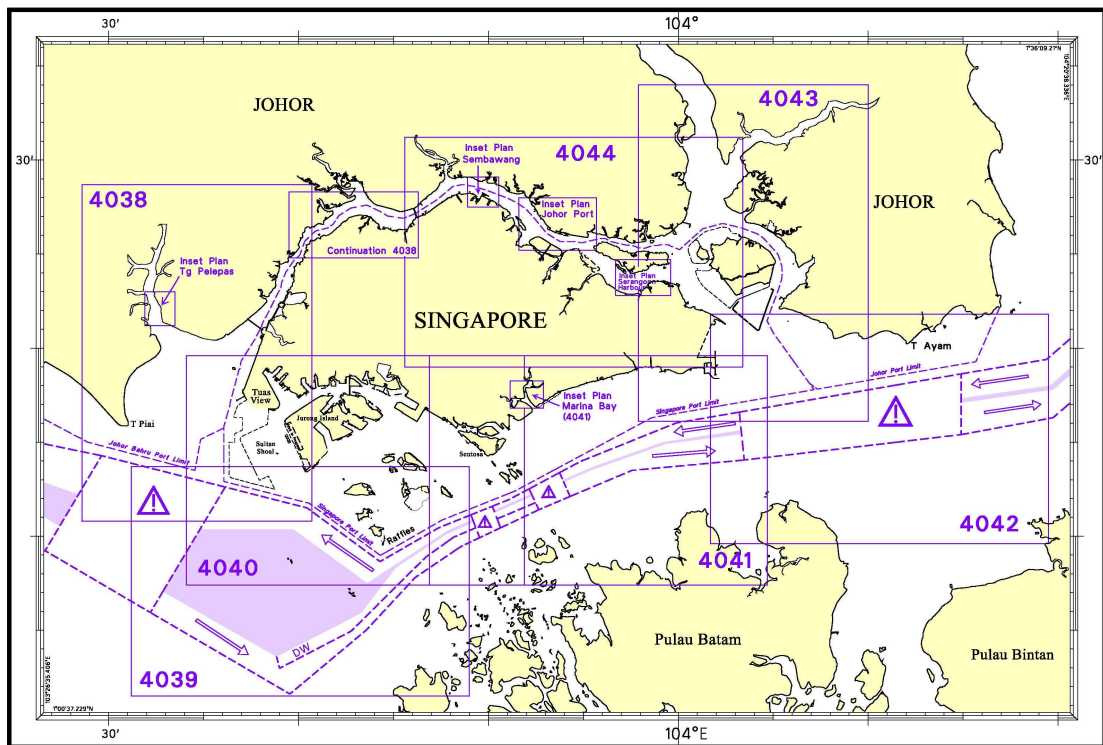
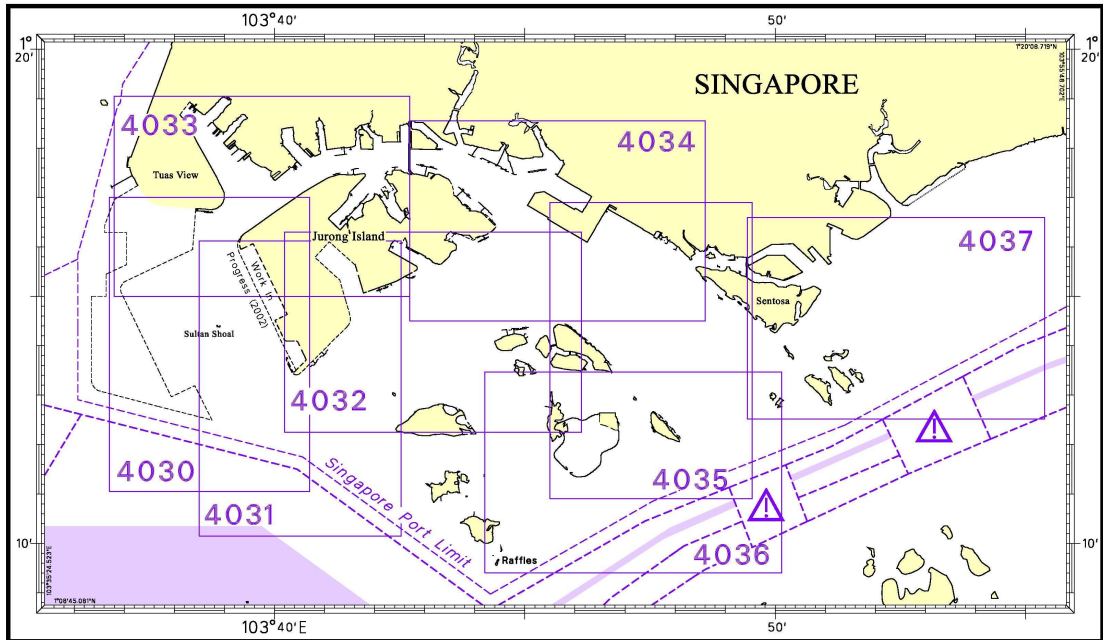
INDEX OF CHARTS AND PUBLICATIONS

NOTICES	DESCRIPTION	PAGE	NOTICES	DESCRIPTION	PAGE
	INDEX OF SINGAPOREAN CHARTS	208	*146	Updating of Publication "SINGAPORE PORT INFORMATION 2006/2007 EDITION"	223
	INDEX OF DUAL BADGED CHARTS	209			
	New Publication "YEAR 2007 SINGAPORE TIDE TABLES"	210			
	New Edition SINGAPOREAN CHARTS	211			
	New Edition DUAL BADGED CHARTS	211			
	New Edition SINGAPORE ELECTRONIC NAVIGATIONAL CHARTS	213			
*139	SP1/GSP1	214			
*140	SP1/GSP1	214			
*141	500	214			
	501	214			
*142	Reclamation at Pulau Tekong	216			
*143	(A) Reclamation of Jurong Island Phase 4 and (B) Marine Soil Investigation and Seismic Blasting Survey at Banyan Basin	218			
*144	Repair of Barge Ramp at Pulau Busing	220			
*145	Soil Investigation Works at Sungei Punggol	221			

I
INDEX OF CHARTS AND PUBLICATIONS
INDEX OF SINGAPOREAN CHARTS

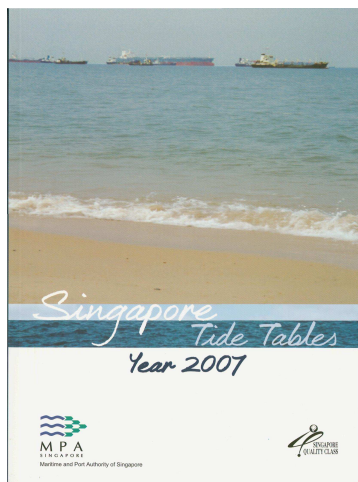


I
INDEX OF CHARTS AND PUBLICATIONS
INDEX OF DUAL BADGED CHARTS



II NEW PUBLICATIONS

NEW PUBLICATION



YEAR 2007 SINGAPORE TIDE TABLES

Summary of Publication

- (a) The daily prediction of tidal height and tidal stream stations within the Port of Singapore, Singapore Strait and Malacca Strait.
- (b) The predictions consist of 4 main segments to facilitate easy reference:
 - High and Low Water Predictions
 - Hourly Tidal Height Predictions
 - Hourly Tidal Stream Predictions
 - Maximum and Slack Tidal Stream Predictions
 - Malacca Strait – High and Low Water Predictions
- (c) As in earlier publications, the presentation of the predictions are enhanced with colour codes so as to differentiate the various states of tidal heights, eg falling or rising tide and tidal stream directions. Moon faces, eg full and new moon, are also included in each calendar month to complement the prediction values.
- (d) The Tidal Heights are given in metres above Chart Datum (CD) and can be referenced to all Singaporean Charts and Dual Badged Charts covering the area. A table showing the various tidal levels eg. MHWS, MLWS, etc, at various stations with reference to CD is also included in this publication.

To Whom Will It Be Useful?

Mariners, shipping community, port users and other interested users.

Frequency/Year of Publication

Annually

Cost of publication

The price of the publication is S\$20.80 (excluding Goods & Services Tax).

Order Enquires

Motion Smith : 76 Shenton Way #01-01
Singapore 079119
Tel : (65) 6220 5098
(After office hours:
Pager No. 9304 4156, 9304 4159)
Fax : (65) 6225 4902
E-mail : sales@motsmith.com
Website : <http://www.motsmith.com>

II NEW PUBLICATIONS

NEW EDITION SINGAPOREAN CHART 202 PUBLISHED ON 19 OCTOBER 2006

Chart No. : 202
Title : Singapore Strait
Coverage : Lat 0° 40.00' N 1° 50.00' N
 Long 103° 05.34' E 104° 48.89' E
Scale : 1:200 000
Date Published : 19 October 2006
Remarks : This new edition includes new surveys, submarine cables and anchorages.
 This new edition supersedes the earlier edition published on 15 November
 2004.

NEW EDITION SINGAPOREAN CHART 501 PUBLISHED ON 21 SEPTEMBER 2006

Chart No. : 501
Title : Singapore Strait – Western Part
Coverage : Lat 0° 58.36' N 0° 16.00' N
 Long 103° 29.17' E 103° 55.05' E
Scale : 1:50 000
Date Published : 21 September 2006
Remarks : This new edition includes new surveys covering Temasek, Sinki, Southern
 and East Keppel Fairways and Raffles Shoal. New submarine cables and
 Nipa Transit Anchorage are also included. This new edition supersedes the
 earlier edition published on 15 September 2003.

NEW EDITION DUAL BADGED CHART PUBLISHED ON 21 SEPTEMBER 2006

Chart No. : 4040
Title : Tuas View to Pulau Sakijang Bendera (S John's Island)
Coverage : Lat 1° 07.40' N 1° 19.60' N
 Long 103° 34.10' E 103° 51.90' E
Scale : 1:30 000
Date Published : 21 September 2006
Remarks : This new edition includes new surveys covering Temasek, Sinki and East
 Keppel Fairways, West Jurong Channel and Raffles Shoal. This new edition
 supersedes the earlier edition published on 1 December 2005.

II NEW PUBLICATIONS

NEW EDITION DUAL BADGED CHARTS PUBLISHED IN AUGUST 2006

Chart No. : 4030
Title : Port of Singapore – West Jurong Anchorages and Temasek Fairway
Coverage : Lat 1° 11.05' N 1° 17.00' N
 Long 103° 36.70' E 103° 40.70' E
Scale : 1:10 000
Date Published : 10 August 2006
Remarks : This new edition includes new surveys covering Temasek Fairway and West Jurong Channel. This new edition supersedes the earlier edition published on 22 January 2004.

Chart No. : 4031
Title : Port of Singapore – Western Approaches to Jurong Island
Coverage : Lat 1° 10.15' N 1° 16.12' N
 Long 103° 38.50' E 103° 42.53' E
Scale : 1:10 000
Date Published : 10 August 2006
Remarks : This new edition includes new surveys covering Raffles Shoal, Selat Pauh, Southern Island Firing Area, Temasek Fairway, VLCC Jetties and Banyan Basin. This new edition supersedes the earlier edition published on 22 January 2004.

Chart No. : 4032
Title : Port of Singapore – Sinki Fairway
Coverage : Lat 1° 12.25' N 1° 16.30' N
 Long 103° 40.20' E 103° 46.13' E
Scale : 1:10 000
Date Published : 10 August 2006
Remarks : This new edition includes new surveys covering Selat Pauh, Southern Island Firing Area, VLCC Jetties, Banyan Basin and Selat Sinki. This new edition supersedes the earlier edition published on 22 January 2004.

Chart No. : 4038
Title : Malaysia and Singapore, Johor Strait, Western Part.
 Plan A, Town Reach (Scale 1:30 000)
 Plan B, Malaysia, Pelabuhan Tanjung Pelepas (Scale 1:15 000)
Coverage : Lat 1° 10.80' N 1° 28.70' N
 Long 103° 28.60' E 103° 40.70' E
Scale : 1:30 000
Date Published : 17 August 2006
Remarks : This new edition includes new surveys covering Temasek Fairway, Sinki Fairway and Raffles Shoal. This new edition supersedes the earlier edition published on 17 November 2005.

Charts are available from : Motion Smith
 76 Shenton Way #01-01
 Singapore 079119
 Tel : (65) 6220 5098
 (After office hours, Pager No.9304 4156, 9304 4159).
 Fax : (65) 6225 4902
 Email : sales@motsmith.com
 Internet Website : <http://www.motsmith.com>

II
NEW PUBLICATIONS





NEW EDITION OF THE SINGAPORE ELECTRONIC NAVIGATIONAL CHARTS (ENC) COVERING DUAL BADGED CHARTS 4030, 4031, 4032 WERE RELEASED ON 10 AUG 2006 AND 4038 ON 17 AUG 2006.

For more information:

Please contact Ms Jenny Goh/Siti at Tel: 6375 1575/6 or visit our website:

<http://www.mpa.gov.sg/portdevelopment/services/enc.htm>

II
NOTICES TO MARINERS AND CHART CORRECTIONS

SP1/GSP1	8Ed 30/03/06 Last NM 126/2006	(HD/HE025/122/2006)	*NM 139/2006
Delete	 West Retan, Q(9)15s5m		1°17.53'N 103°45.10'E
		(HD/HE025/128/2006)	* NM 140/2006
Insert	 FI(2)10s, KM Ja		1°13.96N 103°51.14'E
<hr/>			
500	4Ed 15/08/05 Last NM 118/2006	(HD/HE025/120/2006)	* NM 141/2006
Relocate	 FI(4)Y.15s, Rasu (1°11.73'N,103°39.54'E)		1°11.80'N 103°39.55'E
<hr/>			
501	4Ed 21/09/06	(HD/HE025/120/2006)	* NM 141/2006
Relocate	 FI(4)Y.15s, Rasu (1°11.73'N,103°39.54'E)		1°11.80'N 103°39.55'E
<hr/>			

II
TEMPORARY AND PRELIMINARY NOTICES

Nil

III NAVIGATIONAL INFORMATION

The Singapore Port Marine Notices can be accessed through the MPA website,
http://www.mpa.gov.sg/circulars_and_notices/portmarine_notices/pm_notices.htm

*** (NM 142/2006) RECLAMATION AT PULAU TEKONG**

Applicable to : Mariners operating at East Johor Strait
 Date : With effect from 19 September 2006 to 18 March 2007
 Location : At Pulau Tekong, within a working area bounded by the following co-ordinates
 (please see plan attached):

WGS 84 Datum

Point / Name	Latitude (N)	Longitude (E)	Colour	Shape	Light Characteristics
L1	1°25.890'	104°03.471'	-	-	-
L2/ * TJUT-20	1°26.260'	104°03.478'	Yellow	Pillar Buoy	Fl Y 2s
TJUT-19	1°26.544'	104°02.353'	Black/ Yellow	Pillar Buoy	Q Fl
TJUT-18	1°26.271'	104°01.343'	Yellow	Pillar Buoy	Fl Y 4s
North Tekong	1°26.021'	104°01.033'	Black/ Yellow	Pillar Buoy	Q Fl
6	1°25.488'	104°00.444'	-	-	-
Tekong	1°25.406'	104°00.442'	Green	Conical Buoy	Fl (3) G 15s
West Tekong	1°25.167'	104°00.434'	Yellow/ Black/ Yellow	Pillar Buoy	Q(9) 15s
TJUT-6	1°24.583'	104°00.634'	Green	Conical Buoy	Fl (2) G 10s
TJUT-5	1°24.218'	104°00.759'	Green	Conical Buoy	Fl G 4s
TJUT-3	1°23.350'	104°01.057'	Green	Conical Buoy	Fl G 2s
Malang Tiga	1°23.044'	104°01.417'	Green	Conical Buoy	Fl G 2.5s
TJUT-1	1°22.591'	104°01.949'	Green	Conical Buoy	Fl G 4s
Nelayan	1°21.853'	104°02.817'	Green	Conical Buoy	Fl G 4s
TJUT-9	1°21.074'	104°03.734'	Green	Conical Buoy	Fl G 4s
South Nelayan	1°20.620'	104°04.310'	Yellow/ Black	Pillar Buoy	Q(6)+LFl 15s
TJUT-10	1°21.187'	104°04.485'	Red	Can Buoy	Fl R 2s
Red Calder	1°21.750'	104°04.690'	Red	Can Buoy	Fl R 4s
TJUT-11	1°22.267'	104°04.876'	Red	Can Buoy	Fl R 6s
Calder	1°23.044'	104°05.159'	Red	Can Buoy	Fl R 8s
21	1°23.703'	104°04.861'	-	-	-

III NAVIGATIONAL INFORMATION

22	1°24.310'	104°01.759'	-	-	-
23	1°24.227'	104°01.665'	-	-	-
24	1°24.294'	104°01.571'	-	-	-
25	1°24.574'	104°01.623'	-	-	-
26	1°24.590'	104°01.777'	-	-	-

* Note: Buoy "TJUT-20" will be installed with a silt and current meter.

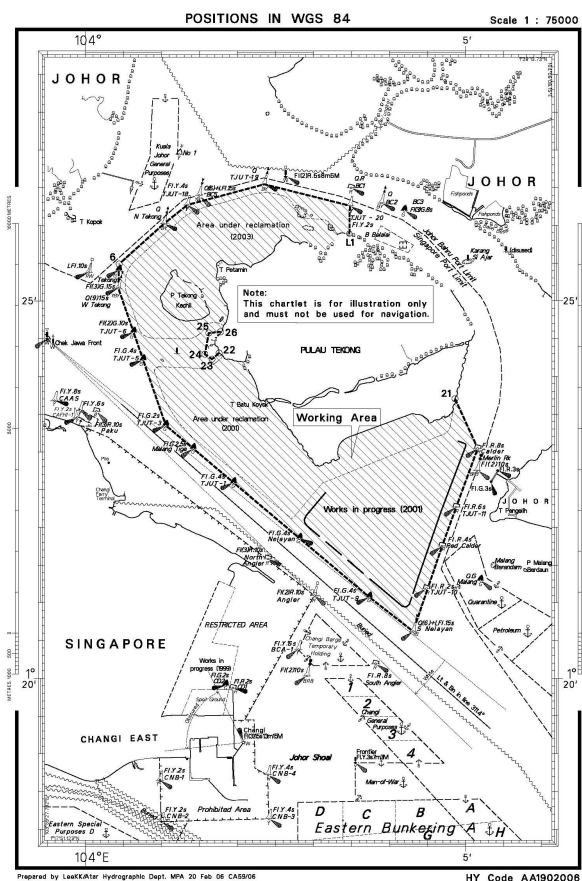
Working Hours : 24 hours daily including Sundays and Public Holidays.

Details : Reclamation works at Pulau Tekong will involve dredging, construction of revetment and trailer-suction-hopper dredgers (TSHD) transporting and pumping sand into the working area.

Caution : **When in the vicinity of the working area, mariners are reminded to:**

- (a) keep well clear and not to enter the working area;
- (b) maintain a proper look-out;
- (c) proceed at a safe speed & navigate with caution;
- (d) maintain a listening watch on VHF Channel 16/ 21; and
- (e) communicate with Sembawang Control on VHF Channel 21 for assistance, if required.

Source : Port Marine Notice No. 130 of 2006 dated 17 September 2006



III NAVIGATIONAL INFORMATION

*** (NM 143/2006) (A) RECLAMATION OF JURONG ISLAND PHASE 4; AND
(B) MARINE SOIL INVESTIGATION AND SEISMIC BLASTING SURVEY AT BANYAN
BASIN**

Applicable to : Mariners operating at the western part of Singapore waters

This is a revision of Port Marine Notice No. 101 of 2006. The job scope and the work period are revised. Port Marine Notice No. 101 of 2006 is cancelled with effect from 18 September 2006.

Date : With effect from 19 September 2006 to 18 March 2007

Location : Western part of Singapore, within a working area bounded by the following co-ordinates (please see plan attached):

Working Area (A)

Point	WGS 84 Datum		Name/ Buoy/Light Characteristics
	Latitude (N)	Longitude (E)	
1	1° 15.559'	103° 41.052'	--
2	1° 15.621'	103° 41.108'	--
3	1° 15.496'	103° 41.243'	--
4	1° 15.250'	103° 41.313'	--
5	1° 15.224'	103° 41.222'	--
5a	1° 15.467'	103° 41.153'	--

Working Area (B)

Point	WGS 84 Datum		Name/ Buoy/Light Characteristics
	Latitude (N)	Longitude (E)	
6	1° 15.868'	103° 41.241'	--
7	1° 15.962'	103° 41.326'	--
8	1° 15.960'	103° 41.591'	--
9	1° 15.602'	103° 41.615'	--
10	1° 15.618'	103° 41.517'	--

Working Area (C)

Point	WGS 84 Datum		Name/ Buoy/Light Characteristics
	Latitude (N)	Longitude (E)	
11	1° 13.923'	103° 40.992'	
12	1° 13.819'	103° 41.098'	
13	1° 13.688'	103° 41.027'	
14	1° 13.487'	103° 40.763'	
15	1° 13.203'	103° 40.317'	PKDBH-9/Yellow Pillar/FI(4) Y 15s
16	1° 13.500'	103° 40.175'	PKDBH-1/Yellow Pillar/FI Y 4s
17	1° 13.971'	103° 39.948'	
18	1° 14.568'	103° 39.663'	
19	1° 15.057'	103° 39.430'	
20	1° 15.546'	103° 39.197'	
21	1° 15.928'	103° 39.015'	Jurong Empat/YBY Pillar/ Q (9)15s
22	1° 16.333'	103° 39.300'	
23	1° 16.240'	103° 39.364'	

And from Point 23 back to Point 11, along the coastline.

Marine Bore Hole Locations

Marine BH	WGS 84 Datum		Schedule	
	Latitude	Longitude	Start	End
VBH4 -10	1° 15.541'	103° 41.129'	11 Sept 2006	18 Oct 2006
MBH4 -11	1° 15.513'	103° 41.148'	11 Sept 2006	17 Sept 2006
MBH4 -12	1° 15.428'	103° 41.189'	18 Sept 2006	24 Sept 2006

III NAVIGATIONAL INFORMATION

MBH4 -13	1° 16.345'	103° 41.224'	24 Sept 2006	01 Oct 2006
VBH4 -14	1° 16.270'	103° 41.233'	19 Oct 2006	26 Nov 2006

Marine Seismic Line Locations

Seismic Line	Latitude	Longitude
L9a Start	1° 15.585'	103° 41.152'
L9a End	1° 15.521'	103° 41.090'
L9b Start	1° 15.780'	103° 41.330'
L9b End	1° 15.817'	103° 41.352'

The following buoys will be temporarily installed in the vicinity of Working Area A:

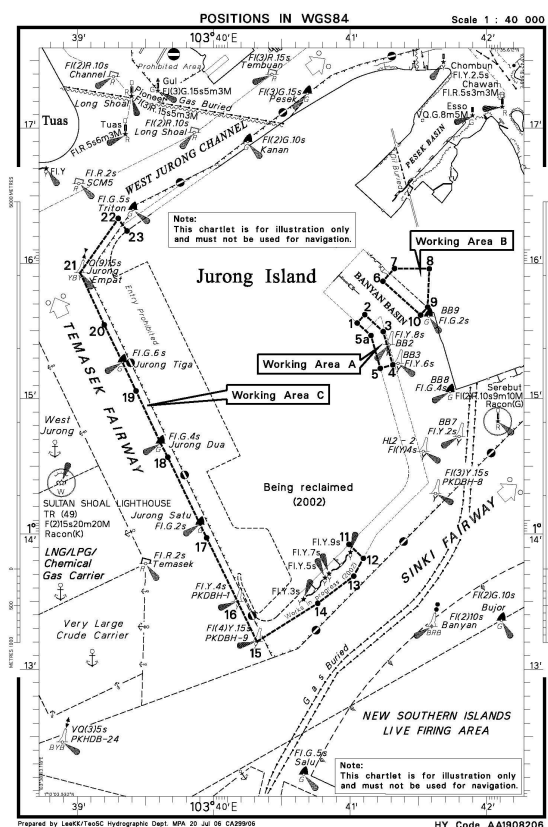
WGS 84 Datum

Point	Latitude (N)	Longitude (E)	Name/ Buoy/Light Characteristics
1	1° 15.398'	103° 41.286'	BB2 / Yellow Pillar / FL Y 8s
2	1° 15.261'	103° 41.352'	BB3 / Yellow Pillar / FL Y 6s

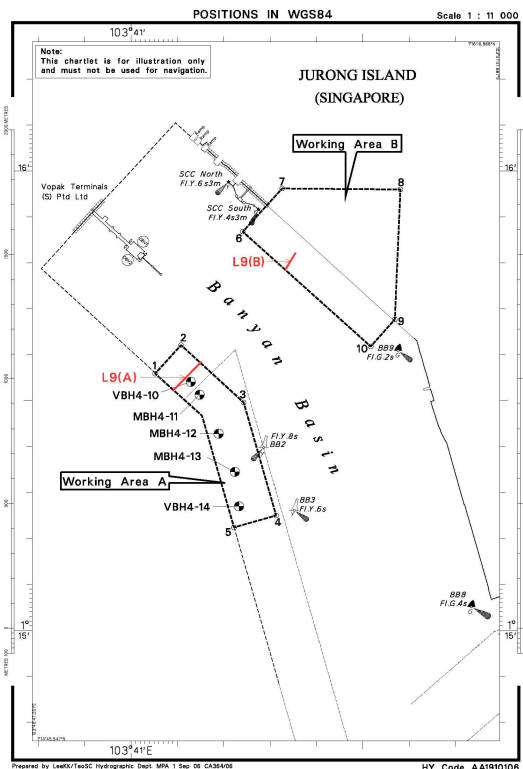
Working Hours : 24 hours daily including Sundays and Public Holidays.

Caution : (a) **When in the vicinity of the working areas, mariners are reminded to:**
 (b) **keep well clear and not to enter the working areas;**
 (c) **maintain a proper look-out;**
 (d) **proceed at a safe speed & navigate with caution;**
 (e) **maintain a listening watch on the applicable VHF Channel and communicate with the relevant Control Sectors for assistance, if required.**

Source : Port Marine Notice No. 131 of 2006 dated 18 September 2006



III NAVIGATIONAL INFORMATION



* (NM 144/2006) REPAIR OF BARGE RAMP AT PULAU BUSING

- Applicable to : Mariners operating in the vicinity of Selat Sinki.
- Date : With effect from 27 September 2006 to 28 March 2007.
- Location : Eastern side of Pulau Busing, bounded by the following coordinates (please see plan attached):

Working Area

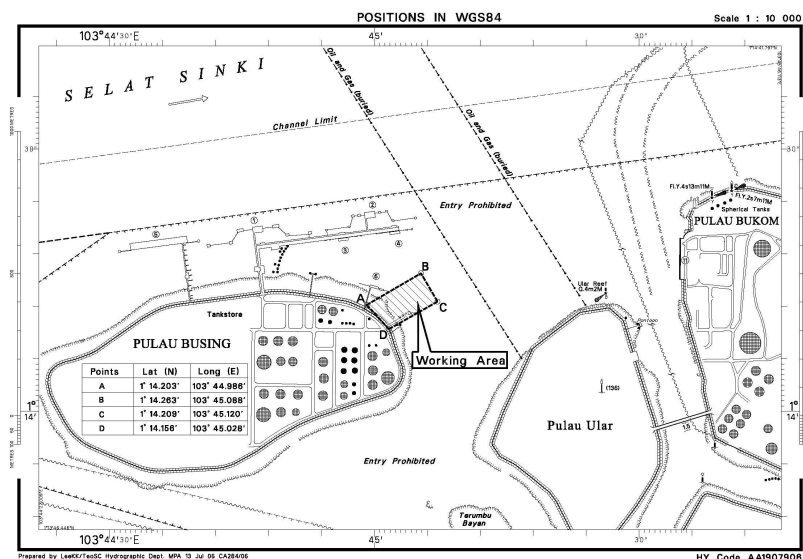
<u>WGS 84 Datum</u>		
<u>Point</u>	<u>Latitude (N)</u>	<u>Longitude (E)</u>
A	1° 14.203'	103° 44.988'
B	1° 14.263'	103° 45.088'
C	1° 14.209'	103° 45.120'
D	1° 14.156'	103° 45.028'

- Working Hours : 24 hours daily, including Sundays and Public Holidays.

- Caution : **When in the vicinity of the working area, mariners are reminded to:**
- (a) keep well clear and not to enter the working area of the repair operation;
 - (b) maintain a proper lookout;
 - (c) proceed at a safe speed;
 - (d) maintain a listening watch on VHF Channel 68; and
 - (e) communicate with Sinki Control on VHF 68 for assistance, if required.

- Source : Port Marine Notice No. 132 of 2006 dated 27 September 2006.

III NAVIGATIONAL INFORMATION



* (NM 145/2006) SOIL INVESTIGATION WORKS AT SUNGEI PUNGGOL

Applicable to : Mariners operating in Sungei Punggol.

Date : With effect from 06 October 2006 to 05 January 2007

Location : Soil investigation works will be carried out at 11 Borehole (BH) locations at Sungei Punggol at the following locations (please see plan attached):

Working Area

WGS 84 Datum

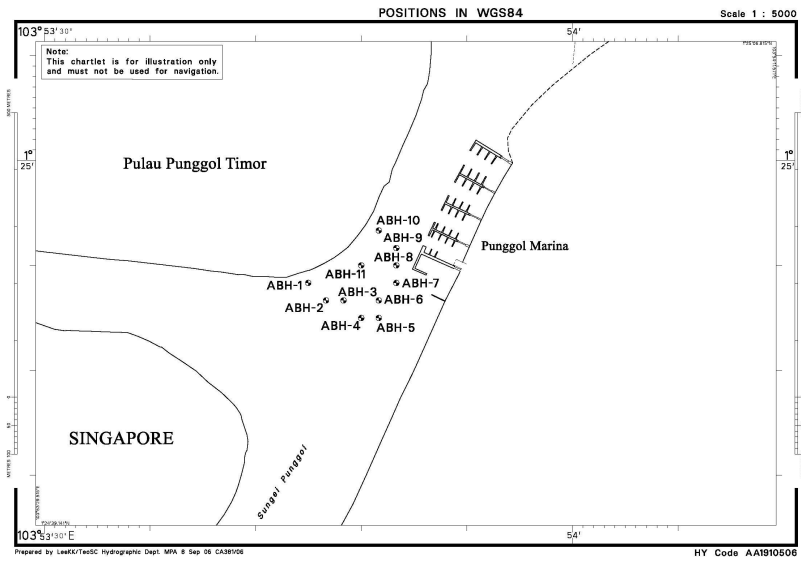
Point	Latitude (N)	Longitude (E)
ABH1	1°24.883'	103°53.750'
ABH2	1°24.867'	103°53.767'
ABH3	1°24.867'	103°53.783'
ABH4	1°24.850'	103°53.800'
ABH5	1°24.850'	103°53.817'
ABH6	1°24.867'	103°53.817'
ABH7	1°24.883'	103°53.833'
ABH8	1°24.900'	103°53.833'
ABH9	1°24.917'	103°53.833'
ABH10	1°24.933'	103°53.817'
ABH11	1°24.900'	103°53.800'

Working Hours : 24 hours daily including Sundays and Public Holidays.

Caution : **a) When in the vicinity of the working area, mariners are reminded to:**
b) keep well clear and not to enter the safety working zone of the jack-up barge;
c) maintain a proper lookout;
d) proceed at a safe speed;
e) navigate with caution when in the vicinity;
f) maintain a listening watch on VHF Channel 21 Sembawang Control; and
g) communicate with Sembawang Control on VHF Channel 21 for assistance, if required.

Source : Port Marine Notice No. 133 of 2006 dated 29 September 2006.

III NAVIGATIONAL INFORMATION



III
AMENDMENTS TO PUBLICATIONS

***(NM 146/2006) UPDATING OF PUBLICATION "SINGAPORE PORT INFORMATION 2006/2007 EDITION"**

1 Page 119

TERUMBU RETAN DARAT

Delete the following:

Name of Beacon / Buoy	Position Lat. N Long. E Deg Min	Structure Colour & Shape	Light Characteristic	Owner
West Retan Beacon	01 17.532 103 45.095	Double black cones point to point on yellow tubular tower, black at bottom, black pile cap on yellow piles	Q(9)W.15s5m3M	Shell Eastern Petroleum (Pte) Ltd

Source: HD/HE025/122/2006

2 Page 147 - Item 7

PASIR PANJANG TERMINAL (PSA Corporation Ltd) (1°17.2'N, 103°46.1'E)

Amend the following:

Berth	Depth Alongside (Year Surveyed)	
	Delete	Insert
P21	16.0m (2005)	16.0m (2006)

Source: HD/HY Codes C00109606

IV
REPRINT OF RADIO NAVIGATIONAL WARNINGS

Nil

V
REPRINT OF ADMIRALTY NOTICES TO MARINERS
FOR DUAL BADGED CHARTS

Nil

SINGAPORE ELECTRONIC NAVIGATIONAL CHARTS (ENC) DISTRIBUTORS
Please approach any of the appointed distributors to purchase the Singapore ENC.

PERSON TO CONTACT	ADDRESS	TELEPHONE/FAX NO./EMAIL/WEBSITE
Mr Chong Chee Meng General Manager	DPM (Singapore) Pte Ltd 1 Maritime Square, #09-72 Harbour Front Centre, Singapore 099253	Tel. No.: +65 6270 4060 Fax No.: +65 6276 3858 Email: sales@dpmsingapore.com.sg Website: http://www.dpmsingapore.com.sg
Ms Shirley Koh	Kelvin Hughes (S) Pte Ltd 8 Pandan Avenue #02-00, Singapore 609384	Tel. No.: +65 6545 9880 ext.12 Fax No.: +65 6545 8892 Email: shirley.koh@khsing.com Website: http://www.kelvinhughes.co.uk
Mr Philip Loh Sales Manager	Motion Smith 76 Shenton Way #01-01, Singapore 079119	Tel. No.: +65 6220 5098 Fax No.: +65 6225 4902 Email: sales@motsmith.com Website: http://www.motsmith.com
Mr Choy Kum Weng Director	Vector Services Pte Ltd 2 Maritime Square #04-12B SPI Building, Singapore 099255	Tel. No.: +65 6278 7212 Fax No.: +65 6278 7212 Email: kwchoy@pacific.net.sg
Mr Looi Keen Wai Regional Sales Manager	Transas Marine Pacific Pte Ltd 750C Chai Chee Road, Technopark@Chai Chee, #04-07 Singapore 469003	Tel. No.: +65 6443 3061 Fax No.: +65 6443 3025 Email: looi@transas.com.sg Website: www.transas.com.sg
Mr George Arts President	Marine Press of Canada 640 Rue St-Paul Ouest, Suite 300 Montreal (QC) Canada, H3C1L9	Tel. No.: (514) 866-8342 Fax No.: (514) 866-9050 Email: sales@marinepress.com Website: www.marinepress.com
Mr Thomas Wilde Superintendent	HanseNautic GmbH Bade & Hornig, Eckardt & Messtorff Herrengaben 31 D-20459 Hamburg, Germany	Tel. No.: +49 40 374 811-32 Fax No.: +49 40 366 400 Email: info@HanseNautic.com Website: http://www.HanseNautic.com
Ms Verena Borsos Manager	SevenCs AG + Co. KG Ruhrstrasse 90, D-22761 Hamburg, Germany	Tel. No.: +49 40 853 58 6940 Fax No.: +49 40 853 58 6949 Email: sales@chartworld.com Website: http://www.sevencs.com
Mr K. Shimiz ENC Manager	Japan Hydrographic Association ENC Service Division 5-3-3 Tsukiji, Chuo-ku Tokyo 104-0045, Japan	Tel. No.: +81 3 3543 0752 Fax No.: +81 3 3543 0695 Email: enc-support@jha.jp Website: http://www.jha.jp.com
Mr Jester-Kim Foreign Business Department Manager	E_MLX Co. Ltd Ssangyong Research No.2 Lab Sinseong-Dong 100 Yusong-Gu, Daejoen 305-804, Korea (ROK)	Tel. No.: +82 42 865 1893 Fax No.: +82 42 865 1884 Email: Jester-kim@emlx.co.kr
Mr C G Kim	Korean Ocean Development Co. Ltd 2ND Fl, Dongbang Bldg, 25-4, 4 Ga Jungang-Dong, Jung-Gu, Busan, South Korea	Tel. No.: +82 514 66 0760 Fax No.: +82 514 65 9345 Email: sales@chartkorea.com Website: http://chartkorea.com
Mr Kjell Nodland	C-Map Norway A/S P.O Box 212, N-4371 Egersund, Norway	Tel No.: +47 514 64 700 Fax No: +47 514 64 701 Email: market@c-map.no Website: http://www.c-map.no

Ms Marianne Barstad	PRIMAR STAVANGER Lervigsveien 36, P.O Box 60, N-4001 Stavanger, Norway	Tel. No.: +47 51 93 9500 Fax No.: +47 51 93 9501 Email: sales@primar.org Website: http://www.primar-stavanger.org
Mr Roar Moe International Marketing Coordinator	Maritime Information System AS (MARIS) Danholmen 25, No.3115 Tonsberg, Norway	Tel. No.: +47 33 30 42 50 Fax No.: +47 33 30 42 51 Email: roar.moe@maris.no Website: http://www.maris.no
Mr Andy Criddle Regional Sales Manager	United Kingdom Hydrographic Office Admiralty Way, Taunton, Somerset TA1 2DN United Kingdom	Tel. No.: +44 (0)1823 337900 Fax No.: +44 (0)1823 284077 Email: vargroup@ukho.gov.uk & andrew.criddle@ukho.gov.uk Website: www.ukho.gov.uk

CHART AGENT FOR MARITIME AND PORT AUTHORITY OF SINGAPORE (MPA) PUBLICATIONS

Agent's name : Motion Smith
Address : 76 Shenton Way # 01-01
Singapore 079119
Telephone : (65) 6220 5098
: (After Office hours: Pager No. 9304 4156, 9304 4159)
Fax No. : (65) 6225 4902
E-mail : sales@motsmith.com
Website : <http://www.motsmith.com>

HYDROGRAPHIC NOTE - Instructions

1. Mariners are requested to notify the Chief Hydrographer, Maritime and Port Authority of Singapore, when new or suspected dangers to navigation are discovered, changes are observed in aids to navigation or where corrections to nautical publications may be necessary. Reports which cannot be confirmed or are lacking in certain details should not be withheld.
2. Any ambiguities of time, positioning and depth should be stressed and any firm expectation of being able to check the information provided on a following voyage should be mentioned.
3. Mariners using satellite position fixing systems, eg. GPS, should provide details of equipment and datum used (where applicable). Where bearings (true or magnetic) are taken visually or by radar to fix a position, it should include more than two objects in order to provide a check on its accuracy. A position may also be defined by bearing and distance from a conspicuous object eg. beacon, lighthouse etc.
4. The note should include a tracing or a digital image of the chart used and the details should be clearly marked.
5. Echo sounders frequently register greater depths than the advertised maximum depth for the equipment, eg. a trace appearing at 50 metres may be in fact be 550 metres or even 1050 metres for equipment whose maximum depth is 500 metres. Erroneous depths caused by 2nd transmission error can usually be recognised by the following:
 - (a) the tracing being weaker than normal for the depth registered,
 - (b) the trace appearing to pass through the transmission line,
 - (c) the feathery nature of the trace.
6. An acknowledgement of receipt will be sent. When a Notice to Mariners is issued, the sender's vessel or name is quoted as the source unless the same information is also received in foreign Notices to Mariners.
7. Reports of shoals, uncharted dangers and defects in aids to navigation may also be made to the appropriate Singapore Port Operations Control Station on VHF Channels 10, 12, 14, 68 or 73.

HYDROGRAPHIC NOTE

To:

Chief Hydrographer
Hydrographic Department
Maritime and Port Authority of Singapore
460 Alexandra Road #20-00 PSA Building
Singapore 119963

Tel : (65) 6375 1550 or (65) 6375 1551
Fax : (65) 6278 7646
Email : hydrographic@mpa.gov.sg

Sender's Contact Details :

Date :

Name of Vessel :

Address of Sender :

Tel : Fax :

Email :

Nature of Observation :

General Location :

Subject :

Position : Lat. Long.

Charts Used :

Date & Time of Observation :

Details :

.....

.....

.....

Attachment :

Equipment Used :

Type of Position Fixing : GPS / DGPS Others :

Type of Echo Sounder :

Name and Signature :

Ship's / Company's tamp :