



SINGAPOREAN NOTICES TO MARINERS

SECTION	CONTENT	Page
I	Index of Charts & Publications	203
II	New Publications	206
	Notices to Mariners and Chart Corrections	208
	Temporary and Preliminary Notices	209
III	Navigational Information	210
	Amendments to Publications	211
IV	Reprint of Radio Navigational Warnings	212
V	Reprint of Admiralty Notices to Mariners for Dual Badged Charts	213

The monthly Notices to Mariners contain corrective information affecting charts published by the Hydrographic Department, Maritime and Port Authority of Singapore. The information contained in these Notices should be updated on the charts affected. Notices under Section II apply only to the particular Singaporean Chart(s) indicated.

Mariners are requested to notify the Chief Hydrographer, Maritime and Port Authority of Singapore, immediately on the discovery of new dangers or suspected dangers to navigation and of changes or defects in aids to navigation. See Hydrographic Note on back page.

The monthly Singaporean Notices to Mariners can be accessed directly from the MPA website:

<http://www.mpa.gov.sg/> > Circulars & Notices > Singaporean NTM

or

<http://www.mpa.gov.sg/infocentre/publications/noticesmari.htm>

This service is offered free of charge.

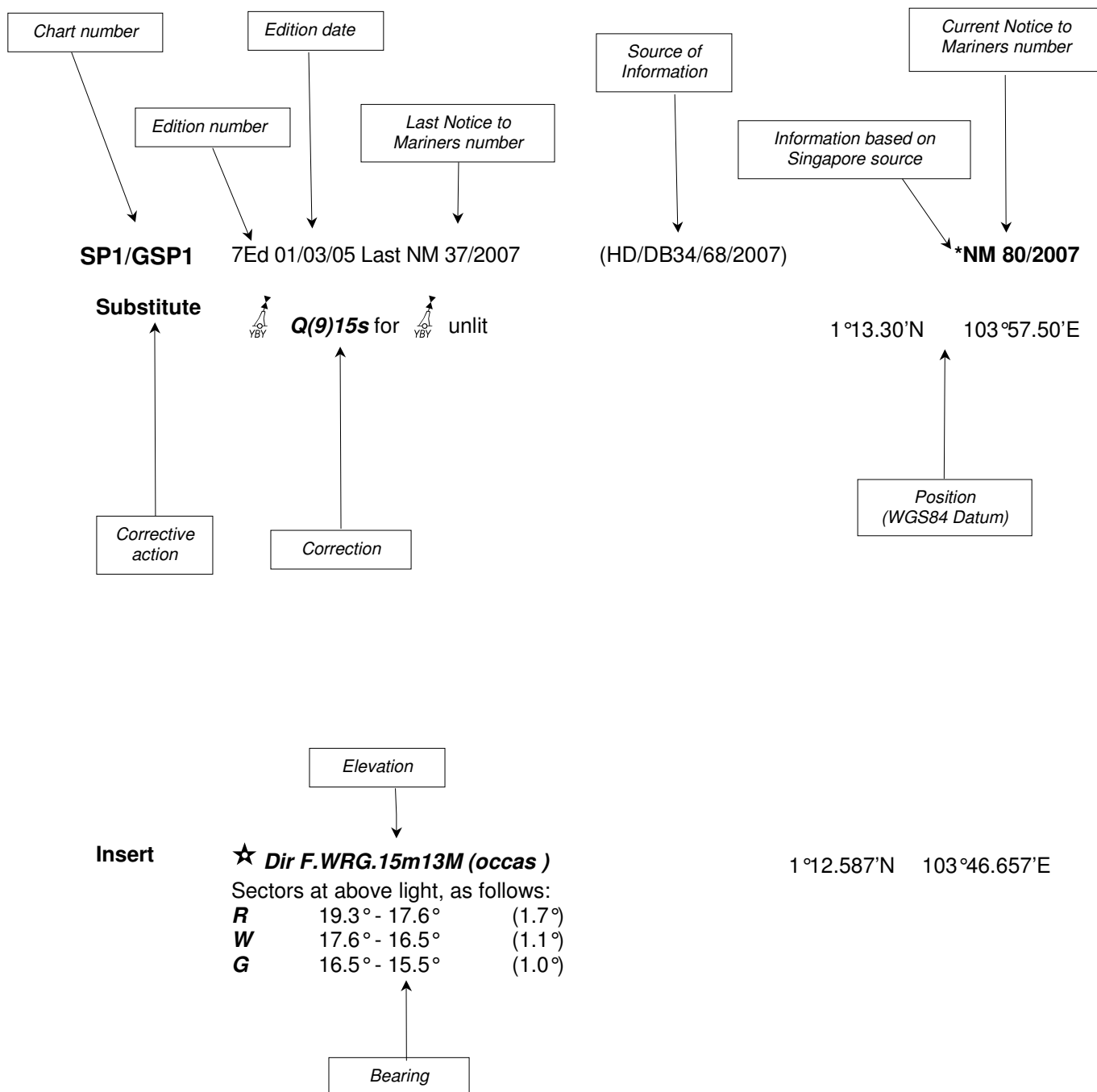
Hydrographic Department
Maritime and Port Authority of Singapore
460 Alexandra Road
PSA Building #20-00
Singapore 119963

Tel : (65) 6375 1227

Fax : (65) 6278 7646

EXPLANATION OF FORMAT

The elements of a typical chart correction are explained below.



Notes:

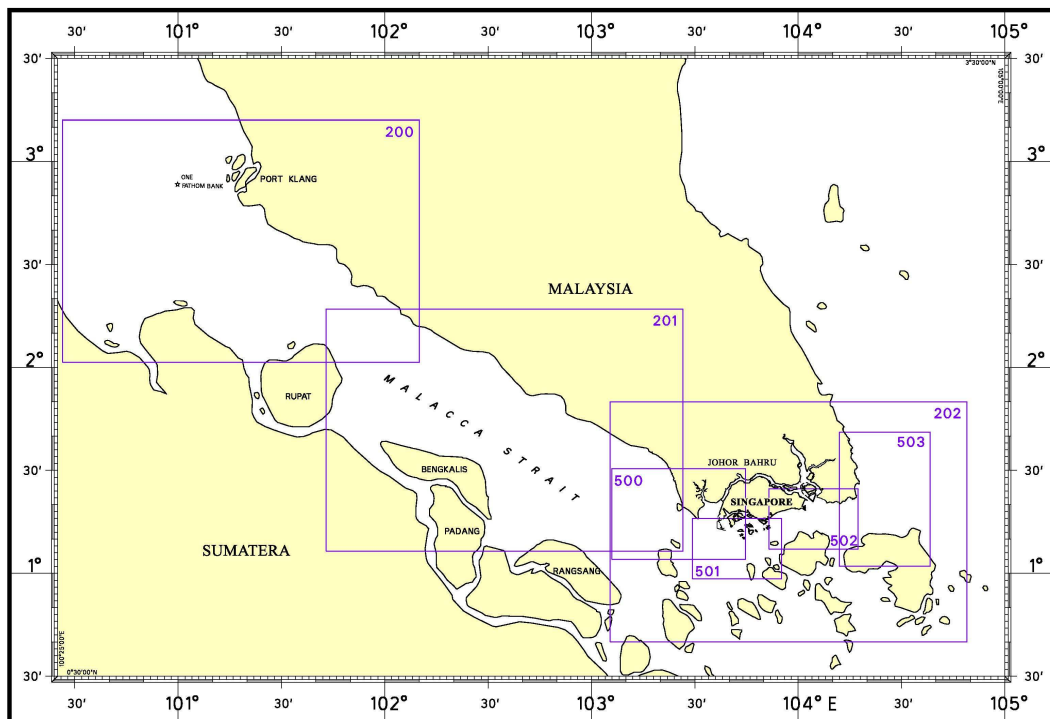
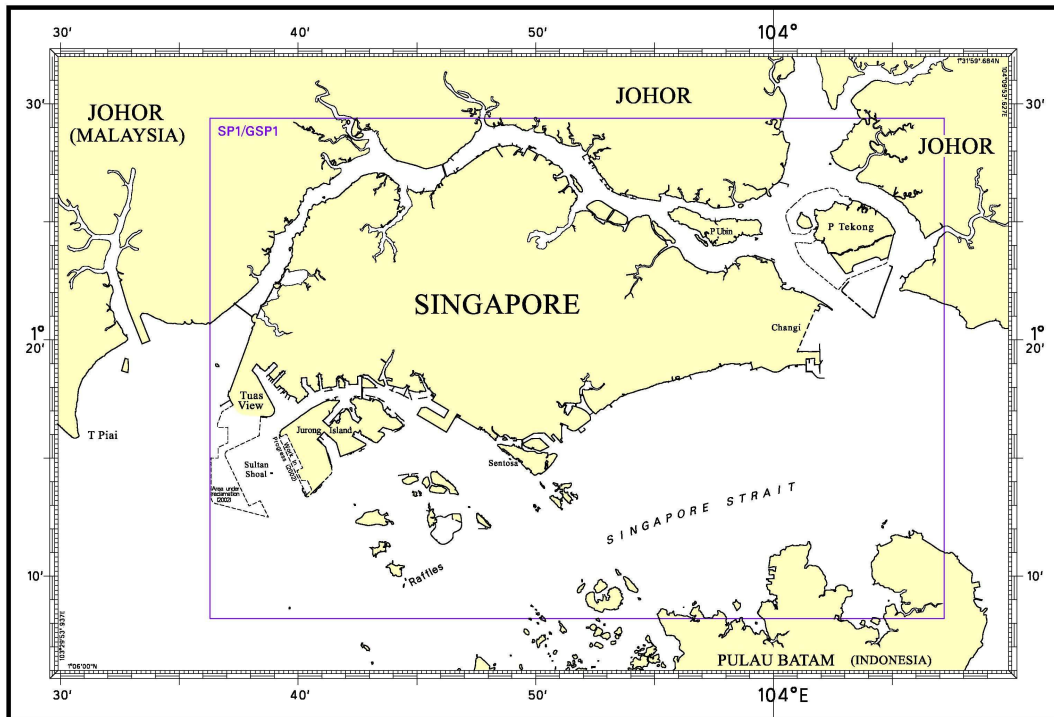
- a) Notice to Mariners number followed by:
 - T** indicates a Temporary Notice (eg. ***NM 80T/2007**).
 - P** indicates a Preliminary Notice (eg. ***NM 80P/2007**).
- b) Bearings are referred to True Compass in degrees clockwise from 000° to 359°. Bearings related to lights are from seaward.
- c) Heights and elevations are above Mean High Water Springs.

I

INDEX OF CHARTS AND PUBLICATIONS

NOTICES	DESCRIPTION	PAGE	NOTICES	DESCRIPTION	PAGE
	INDEX OF SINGAPOREAN CHARTS	204			
	INDEX OF DUAL BADGED CHARTS	205			
	New Publication "SINGAPORE TIDE TABLES YEAR 2008"	206			
	New Edition SINGAPOREAN CHARTS	207			
*105	SP1/GSP1	208			
*106	SP1/GSP1	208			
*107	SP1/GSP1	208			
108T	SP1/GSP1	209			
	202	209			
	501	209			
	502	209			
*109	Port Marine Notices	210			
*110	Updating of Publication "SINGAPORE PORT INFORMATION 2006/2007 EDITION"	211			

I
INDEX OF CHARTS AND PUBLICATIONS
INDEX OF SINGAPOREAN CHARTS

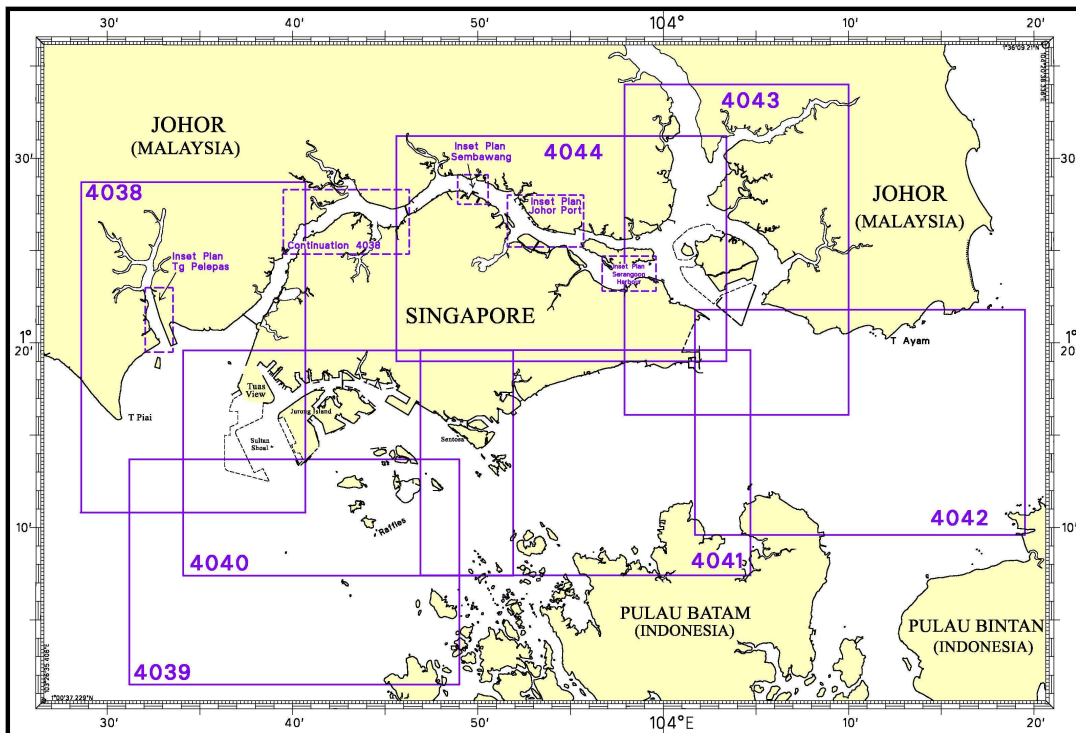
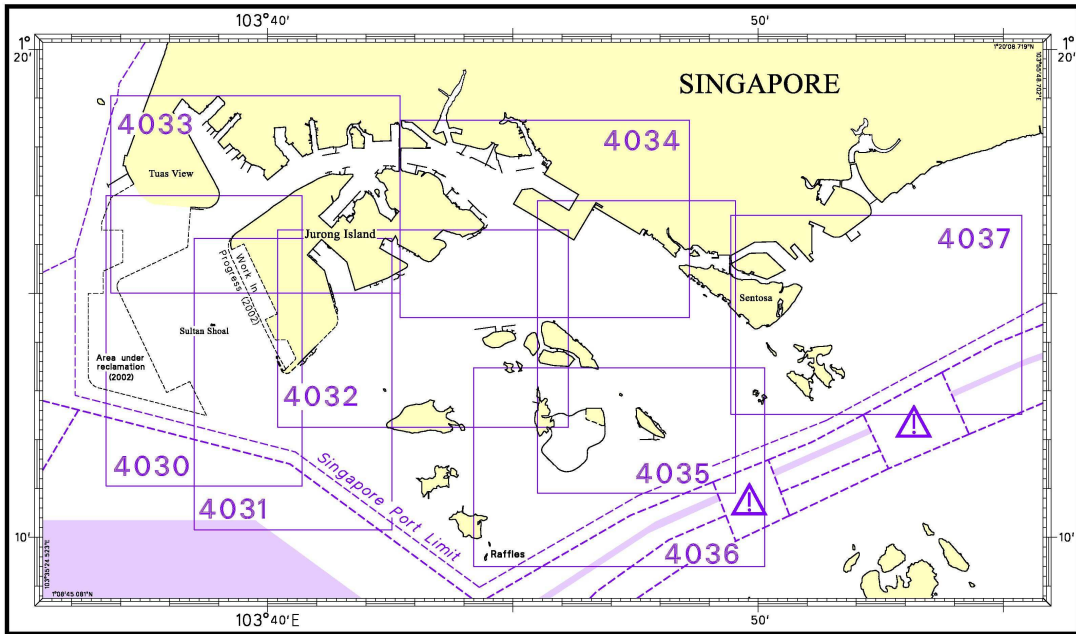


Notes:

Updated SINGAPOREAN Charts (excluding Charts SP1/GSP1 and 503) are available through our Print On Demand (POD). For more information, refer to Section III – Navigational Information and these charts can be purchased from our authorised Chart Agents:
 DPM (Singapore) Pte Ltd, E.W. Liner Charts & Publications Pte Ltd and Motion Smith.

I INDEX OF CHARTS AND PUBLICATIONS

INDEX OF DUAL BADGED CHARTS



II NEW PUBLICATIONS

NEW PUBLICATION



SINGAPORE TIDE TABLES YEAR 2008

Summary of Publication

- (a) This 239 page book contains the following information:
The predictions consist of 5 main segments to facilitate easy reference:
- High and Low Water Predictions
 - Hourly Tidal Height Predictions
 - Hourly Tidal Stream Predictions
 - Maximum and Slack Tidal Stream Predictions
 - Malacca Strait – High and Low Water Predictions
- The predictions cover stations in Singapore and selected stations along the West Coast of Peninsular Malaysia.
- (b) As in earlier publications, the presentation of the predictions is enhanced with colour codes so as to differentiate the various states of tidal heights, eg falling or rising tide and tidal stream directions. Moon phases, eg full and new moon, are also included in each calendar month to complement the prediction values.
- (c) The Tidal Heights are given in metres above Chart Datum (CD). The CD is the datum of soundings shown on the Singaporean Charts and Dual Badged Charts covering the area. A table showing the various tidal levels eg. Mean High Water Springs, Mean Low Water Springs etc, at various stations with reference to CD is also included in this publication.

To Whom Will It Be Useful?

Mariners, shipping community, port users and other interested users.

Frequency/Year of Publication

Annually.

Cost of publication

To be advised by Chart Agents.

Order Enquires:

This publication is available from the following Chart Agents:

- 1) DPM (Singapore) Pte Ltd
- 2) E.W. Liner Charts & Publications Pte Ltd
- 3) Motion Smith

(Please refer to Page 219 for details.)

II NEW PUBLICATIONS

NEW EDITION SINGAPOREAN CHART PUBLISHED ON 30 AUGUST 2007

Chart No. : 500
Title : Malacca and Singapore Straits
 Pulau Pisang To Raffles Lighthouse
Coverage : Lat 1°04.05' N 1°30.50' N
 Long 103°05.80' E 103°44.61' E
Scale : 1:75 000
Date Published : 30 August 2007
Size of chart : 959.8 X 649.9 mm
Remarks : This new edition includes updated surveys covering approaches to Temasek and Sinki Fairways, Raffles Shoal, new topography and new jetties at Jurong Island. The existing chart of the same number published on 15 Aug 2005 is superseded.

NEW EDITION SINGAPOREAN CHART PUBLISHED ON 5 OCTOBER 2007



Chart No. : 201
Title : Malacca Strait – Tanjung Keling to Western Entrance of Singapore Strait
Coverage : Lat 1°06.43'N 2°16.99' N
 Long 101°42.91'E 103°26.45' E
Scale : 1 : 200 000
Date Published : 5 October 2007
Size of chart : 960.0 X 650.0 mm
Remarks : This new edition includes new submarine cables and anchorages. The 50metre contours were added to enhance the safety of navigation. This would complement the other 200 series charts where the 50m contour has been charted. Tidal height levels were updated based on the Admiralty Tide Tables. This new edition supersedes the earlier edition published on 15 September 2003.

II
NOTICES TO MARINERS AND CHART CORRECTIONS



SP1/GSP1 2Ed 19/07/07 Last NM 97/2007 (HD/HY Code G00107207) ***NM 105/2007**

Insert  **Wk** 1°13.71'N 103°37.67'E

(HD/HE025/104/2007) ***NM 106/2007**

Substitute  **Fl.Y.6s5m4M** for  **Fl.R.5s5m3M** 1°16.72'N 103°52.36'E

(HD/HE025/105/2007) ***NM 107/2007**

Substitute  **Fl.Y.6s5m4M** for  **Fl.G.5s5m3M** 1°16.81'N 103°52.58'E

II
TEMPORARY AND PRELIMINARY NOTICES

SP1/GSP1 2Ed 19/07/07 Last NM 97/2007 (Janhidros NTM No. 35/301/2007) **NM 108T/2007**

Insert legend, "**Extinguished**" against Batu Berhanti light
beacon 1°11.09'N 103°52.99'E

202 5Ed 19/10/06 Last NM 99/2007 (Janhidros NTM No. 35/301/2007) **NM 108T/2007**

Insert legend, "**Extinguished**" against Batu Berhanti light
beacon 1°11.08'N 103°52.99'E

501 4Ed 21/09/06 Last NM 95/2007 (Janhidros NTM No. 35/301/2007) **NM 108T/2007**

Insert legend, "**Extinguished**" against Batu Berhanti light
beacon 1°11.09'N 103°52.99'E

502 3Ed 25/10/05 Last NM 102/2007 (Janhidros NTM No. 35/301/2007) **NM 108T/2007**

Insert legend, "**Extinguished**" against Batu Berhanti light
beacon 1°11.09'N 103°52.99'E

III NAVIGATIONAL INFORMATION

*(NM 109/2007) PORT MARINE NOTICES

These notices can be accessed directly from MPA website:

http://www.mpa.gov.sg/circulars_and_notices/portmarine_notices/pm_notices.htm

PMN No.	Subject
130/2007	Marine construction works at Jurong Port, J1 Basin.

SINGAPOREAN PRINT ON DEMAND (POD) CHARTS

Print On Demand (POD) Charts are the most up-to-date paper nautical charts printed for navigational use. These nautical charts are produced in accordance with the International Hydrographic Organisation (IHO) charting specifications. These official nautical charts are continually updated to the latest Notices to Mariners before they are printed and sold to users.

BENEFITS TO OUR CUSTOMERS

Convenience

Customers need not make numerous hand corrections to the nautical charts before use. In addition the updated POD Charts are more accurate and reliable than offset printed charts with hand corrections.

Clarity

Clarity in the presentation of updated information as compared to lithographic printed charts, where in some cases there are several overlapping corrections over existing information.

Coverage

The POD Charts cover the Malacca and Singapore Straits, from One Fathom Bank to Horsburgh Lighthouse.

III
AMENDMENTS TO PUBLICATIONS

***(NM 110/2007) UPDATING OF PUBLICATION "SINGAPORE PORT INFORMATION 2006/2007 EDITION"**

1 Page 150 - Item 9

JURONG TERMINAL (JURONG PORT PTE LTD) (1°18.3'N, 103°43.1'E)

Amend the following:

Berth	Length of Berth		Depth Alongside (Year Surveyed)	
	Delete	<i>Insert</i>	Delete	<i>Insert</i>
J10	-	-	11.5m (2001)	9.4m (2007)
J11	-	-	8.4m (2007)	8.6m (2007)
J12	275m	350m	8.9m (2007)	9.3m (2007)

Source: HD/HY Code J00106507

2 Page 150 - Item 10

PULAU DAMAR LAUT (JURONG PORT PTE LTD) (1°18.1'N, 103°42.9'E)

Amend the following:

Berth	Depth Alongside (Year Surveyed)	
	Delete	<i>Insert</i>
J25	13.2m (2007)	13.2m (2007)*

* 12.9m high spot off Berth J25 at Lat. 1° 18.4'N Long. 103° 42.9'E.

Source: HD/HY Code J00106507

3 Page 131

APPROACHES TO KALLANG BASIN (Cont/)

Amend the following:

Name Of Beacon / Buoy	Structure Colour & Shape		Light Characteristic	
	Delete	<i>Insert</i>	Delete	<i>Insert</i>
South Marina Beacon	Red cylinder on red pile	Yellow 'X' on yellow pile	Fl.R.5s5m3M	Fl.Y.6s5m4M
South Kallang Beacon	Green cone on green pile	Yellow 'X' on yellow pile	Fl.G.5s5m3M	Fl.Y.6s5m4M

Source: HD/HE025/104/2007 & HD/HE025/105/2007

IV
REPRINT OF RADIO NAVIGATIONAL WARNINGS

Nil

V
**REPRINT OF ADMIRALTY NOTICES TO MARINERS
 FOR DUAL BADGED CHARTS**

These notices can be accessed directly from UKHO Website:

<http://www.ukho.gov.uk/amd/weeklyNms.asp>

**4521* SINGAPORE - East Jurong Channel - Damar Laut Basin - Lights. Coastline. Depths. Dredged depths.
 Legends.**

Light List Vol. F, 2006/07, 1700.21, 1700.22

Source: Maritime and Port Authority of Singapore

Chart 4034 [*previous update 4134/07*] WGS84 DATUM

Insert	the accompanying block, showing new lights and amendments to coastline, depths and dredged depths, centred on:	1° 18'·40N., 103° 42'·93E.
Amend	legend to, 10·4m (2007), centred on:	1° 17'·450N., 103° 44'·772E.
	legend to, 15·4m (2007), centred on:	1° 17'·391N., 103° 43'·574E.

4592 MALAYSIA - Peninsular Malaysia, West Coast - Johor Strait Western Part - Pelabuhan Tanjung Pelepas Southwards - Light-beacon. Buoy.

Light List Vol. F, 2006/07, 1677.4

Source: UK Hydrographic Office

Chart 4038 (plan B, Pelabuhan Tanjung Pelepas) [*previous update 2832/07*] WGS84 DATUM

Substitute	 Q(3)10s for  Q(3)10s	1° 19'·749N., 103° 33'·050E.
------------	---	------------------------------

Chart 4038 [*previous update 2832/07*] WGS84 DATUM

Substitute	 Q(3)10s for  Q(3)10s	1° 19'·75N., 103° 33'·05E.
------------	---	----------------------------

4593* SINGAPORE - Changi East South-eastwards - Depths.

Source: Maritime and Port Authority of Singapore

Chart 4041 [*previous update 4027/07*] WGS84 DATUM

Insert	depth 18 ₉ enclosed by 20m contour	(a) 1° 18'·20N., 104° 03'·67E.
Substitute	depth 17 ₂ for depth 17 ₅	(b) 1° 18'·35N., 104° 03'·49E.
	depth 22 ₄ for depth 23 ₂	(c) 1° 17'·82N., 104° 04'·44E.
Delete	depth 16 ₈ enclosed by 20m contour, adjacent to:	(a) above

Chart 4042 [*previous update 1907/07*] WGS84 DATUM

Insert	depth 17 ₂	(a) 1° 18'·35N., 104° 03'·49E.
	depth 18 ₉ enclosed by 20m contour	(b) 1° 18'·21N., 104° 03'·67E.
	depth 18 ₈ enclosed by 20m contour	(c) 1° 18'·09N., 104° 05'·27E.
Substitute	depth 22 ₄ for depth 23 ₂	1° 17'·82N., 104° 04'·44E.
	depth 17 ₉ enclosed by 20m contour for depth 18 ₂ enclosed by 20m contour	1° 18'·19N., 104° 04'·73E.
Delete	depth 17 ₄ , adjacent to:	(a) above
	depth 16 ₈ enclosed by 20m contour, adjacent to:	(b) above
	depth 19 enclosed by 20m contour, adjacent to:	(c) above

V
**REPRINT OF ADMIRALTY NOTICES TO MARINERS
 FOR DUAL BADGED CHARTS**

Chart 4043 [*previous update 4258/07*] WGS84 DATUM

Insert	depth 18 ₉ enclosed by 20m contour	(a)	1° 18'·21N., 104° 03'·67E.
	depth 18 ₈ enclosed by 20m contour	(b)	1° 18'·09N., 104° 05'·27E.
Substitute	depth 17 ₂ for depth 17 ₅		1° 18'·35N., 104° 03'·49E.
	depth 22 ₄ for depth 23 ₂		1° 17'·82N., 104° 04'·44E.
	depth 17 ₉ enclosed by 20m contour for depth 18 ₂ enclosed by 20m contour		1° 18'·19N., 104° 04'·73E.
Delete	depth 16 ₈ enclosed by 20m contour, adjacent to:	(a)	above
	depth 19 enclosed by 20m contour, adjacent to:	(b)	above

4594* SINGAPORE - Tuas View - Dredged depth.

Source: Maritime and Port Authority of Singapore

Chart 4030 [*previous update 70/07*] WGS84 DATUM

Amend	dredged depth to, 13.0m (2007), centred on:	1° 16'·680N., 103° 38'·683E.
-------	---	------------------------------



Chart 4033 [*previous update 2857/07*] WGS84 DATUM

Amend	dredged depth to, 13.0m (2007), centred on:	1° 16'·680N., 103° 38'·683E.
-------	---	------------------------------

4595* SINGAPORE STRAIT - Pulau Nipa South-westwards - Anchorage areas. Legend.

Source: Maritime and Port Authority of Singapore

Chart 4039 [*previous update 4060/07*] WGS84 DATUM

Insert	limit of anchorage area, pecked line, joining:	(a)	1° 04'·19N., 103° 31'·20E. (W border)
		(b)	1° 03'·56N., 103° 31'·63E. and 1° 03'·90N., 103° 31'·40E. 1° 03'·63N., 103° 31'·20E. (W border)
			1° 03'·76N., 103° 31'·40E.
Delete	 Gas Tanker, centred on: legend, Anchorage Area, close SE of: former limit of anchorage area, pecked line, close N of:	(c)	1° 03'·89N., 103° 31'·29E. (c) above (a)-(b) above

4596* SINGAPORE - Main Strait - Sentosa Eastwards - Obstruction.

Source: Maritime and Port Authority of Singapore

Chart 4037 [*previous update 4027/07*] WGS84 DATUM

Insert	 <i>Obstn</i>	1° 13'·985N., 103° 54'·424E.
--------	--	------------------------------

Chart 4041 [*previous update 4593/07*] WGS84 DATUM

Insert	 <i>Obstn</i>	1° 13'·99N., 103° 54'·42E.
--------	--	----------------------------

V
REPRINT OF ADMIRALTY NOTICES TO MARINERS
FOR DUAL BADGED CHARTS

4597* SINGAPORE - Main Strait - Pulau Sebarok Southwards - Light-beacon.

Light List Vol. F, 2007/08, 1694.8

Source: Maritime and Port Authority of Singapore

Chart 4035 [*previous update 4061/07*] WGS84 DATUM

Move  FI(3)G.10s6m4M Gusong, from: 1° 11'·117N., 103° 47'·646E.
to: 1° 11'·080N., 103° 47'·640E.

Chart 4036 [*previous update New Edition 05/07/2007*] WGS84 DATUM

Move  FI(3)G.10s6m4M Gusong, from: 1° 11'·117N., 103° 47'·646E.
to: 1° 11'·080N., 103° 47'·640E.

Chart 4039 [*previous update 4595/07*] WGS84 DATUM

Move  FI(3)G.10s6m4M Gusong, from: 1° 11'·12N., 103° 47'·65E.
to: 1° 11'·08N., 103° 47'·64E.

Chart 4040 [*previous update 4061/07*] WGS84 DATUM


Move  FI(3)G.10s6m4M Gusong, from: 1° 11'·12N., 103° 47'·65E.
to: 1° 11'·08N., 103° 47'·64E.

Chart 4041 [*previous update 4596/07*] WGS84 DATUM

Move  FI(3)G.10s6m4M Gusong, from: 1° 11'·12N., 103° 47'·65E.
to: 1° 11'·08N., 103° 47'·64E.

4598* SINGAPORE - Sentosa Northwards - Cruise Bay - Buoy.

Source: Maritime and Port Authority of Singapore

Move  FI(3)G.15s Renggis, from: 1° 15'·587N., 103° 48'·932E.
to: 1° 15'·626N., 103° 48'·841E.

4599* SINGAPORE - Jurong Island - Banyan Basin - Buoy.

Source: Maritime and Port Authority of Singapore

Chart 4031 [*previous update 3385/07*] WGS84 DATUM

Delete  FI.G.2s BB9 1° 15'·609N., 103° 41'·576E.

Chart 4032 [*previous update 4061/07*] WGS84 DATUM

Delete  FI.G.2s BB9 1° 15'·609N., 103° 41'·576E.

V
**REPRINT OF ADMIRALTY NOTICES TO MARINERS
 FOR DUAL BADGED CHARTS**

4600* SINGAPORE - Jurong Island Westwards - Depths. Foul.

Source: Maritime and Port Authority of Singapore

Chart 4030 [*previous update 4594/07*] WGS84 DATUM



Insert	depth 19 depth 19 ₆ enclosed by 20m contour	(a) 1° 14'·140N., 103° 38'·280E. 1° 14'·659N., 103° 37'·622E.
Substitute	depth 14 ₂ for depth 14 ₅  Foul for  Foul depth 19 ₄ enclosed by 20m contour for depth 20 enclosed by 20m contour depth 19 ₄ enclosed by 20m contour for depth 19 ₉ enclosed by 20m contour depth 19 ₄ enclosed by 20m contour for depth 19 ₇ enclosed by 20m contour	1° 15'·730N., 103° 38'·533E. 1° 14'·805N., 103° 38'·087E. 1° 14'·781N., 103° 38'·362E. 1° 14'·840N., 103° 38'·486E.
Delete	depth 19 ₆ , close S of:	1° 14'·161N., 103° 38'·429E. (a) above

Chart 4031 [*previous update 4599/07*] WGS84 DATUM

Substitute	depth 14 ₂ for depth 14 ₅	1° 15'·730N., 103° 38'·533E.
------------	---	------------------------------

Chart 4033 [*previous update 4594/07*] WGS84 DATUM

Substitute	depth 14 ₂ for depth 14 ₅	1° 15'·730N., 103° 38'·533E.
------------	---	------------------------------

Chart 4038 [*previous update 4592/07*] WGS84 DATUM


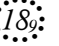


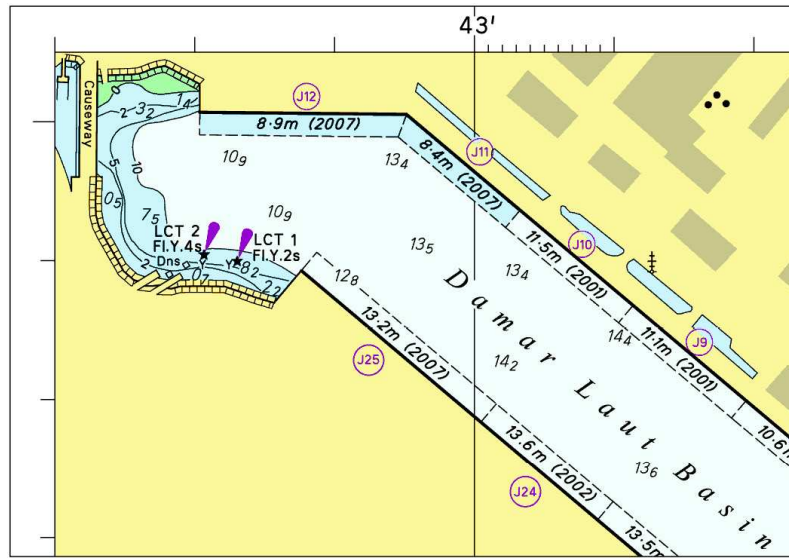
Insert	depth 14 ₂ depth 19 ₆ enclosed by 20m contour	1° 15'·73N., 103° 38'·53E. (a) 1° 14'·66N., 103° 37'·62E.
Substitute	 Foul for  Foul depth 19 ₄ enclosed by 20m contour for depth 19 ₉ enclosed by 20m contour	1° 14'·81N., 103° 38'·09E. 1° 14'·84N., 103° 38'·49E.
Delete	depth 20 ₁ , adjacent to:	(a) above

Chart 4040 [*previous update 4597/07*] WGS84 DATUM

Insert	depth 14 ₂ depth 19 ₆ enclosed by 20m contour	1° 15'·73N., 103° 38'·53E. (a) 1° 14'·66N., 103° 37'·62E.
Substitute	 Foul for  Foul depth 19 ₄ enclosed by 20m contour for depth 19 ₉ enclosed by 20m contour	1° 14'·81N., 103° 38'·09E. 1° 14'·84N., 103° 38'·49E.
Delete	depth 20 ₁ , adjacent to:	(a) above

V
REPRINT OF ADMIRALTY NOTICES TO MARINERS
FOR DUAL BADGED CHARTS



Block for Chart No 4034

Updated to Admiralty Notices to Mariners Edition No. 41 of 2007 dated 11 October 2007.

SINGAPORE ELECTRONIC NAVIGATIONAL CHARTS (ENC) DISTRIBUTORS

Please approach any of the appointed distributors to purchase the Singapore ENC.

CONTACT PERSON/ DESIGNATION	ADDRESS	TELEPHONE/FAX NO./EMAIL/WEBSITE
Mr Chong Chee Meng General Manager	DPM (Singapore) Pte Ltd 1 Maritime Square, #09-72 Harbour Front Centre, Singapore 099253	Tel. No.: +65 6270 4060 Fax No.: +65 6276 3858 Email: sales@dpsmsingapore.com.sg Website: http://www.dpsmsingapore.com.sg
Mr Hamzah Akhbar MDS Branch Manager	Kelvin Hughes(S) Pte Ltd 8 Pandan Avenue #02-00, Singapore 609384	Tel. No.: +65 6545 9880 ext.24 Fax No.: +65 6545 8892 Email: hamzah.akhbar@khsing.com Website: http://www.kelvinhughes.co.uk
Mr Philip Loh Sales Manager	Motion Smith 76 Shenton Way #01-01, Singapore 079119	Tel. No.: +65 6220 5098 Fax No.: +65 6225 4902 Email: sales@motsmith.com Website: http://www.motsmith.com
Mr Dexter Lee Regional Sales Manager	Transas Marine Pacific Pte Ltd 750C Chai Chee Road, Technopark@Chai Chee, #04-07 Singapore 469003	Tel. No.: +65 6443 3061 Fax No.: +65 6443 3025 Email: looi@transas.com.sg Website: http://www.transas.com.sg
Mr Choy Kum Weng Director	Vector Services Pte Ltd 15 West Coast Highway, #02-14A Pasir Panjang Building Singapore 117861	Tel. No.: +65 6777 3602 Fax No.: +65 6777 9203 Email: kwchoy@pacific.net.sg
Mr George Arts President	Marine Press of Canada 640 Rue St-Paul Ouest, Suite 300 Montreal (QC) Canada, H3C1L9	Tel. No.: (514) 866-8342 Fax No.: (514) 866-9050 Email : sales@marinepress.com Website: http://www.marinepress.com
Mr Thomas Wilde Superintendent	HanseNautic GmbH Bade & Hornig, Eckardt & Messtorff Herrengaben 31 D-20459 Hamburg, Germany	Tel. No.: +49 40 374 811-32 Fax No.: +49 40 366 400 Email: wilde@hansenautic.de Website : http://www.HanseNautic.com
Ms Verena Borsos Manager	SevenCs AG + Co. KG Ruhrstrasse 90, D-22761 Hamburg, Germany	Tel. No.: +49 40 853 58 6940 Fax No.: +49 40 853 58 6949 Email: sales@chartworld.com Website : http://www.sevencs.com
Mr Keiji Shimizu ENC Manager	Japan Hydrographic Association ENC Service Division 5-3-3 Tsukiji, Chuo-ku Tokyo 104-0045, Japan	Tel. No.: +81 3 3543 0752 Fax No.: +81 3 3543 0695 Email: enc-support@jha.jp Website: http://www.jha.jp.com
Mr Jester-Kim Foreign Business Department Manager	E_MLX Co. Ltd Ssangyong Research No.2 Lab Sinseong-Dong 100 Yusong-Gu, Daejoen 305-804, Korea (ROK)	Tel. No.: +82 42 865 1893 Fax No.: +82 42 865 1884 Email: Jester-kim@emlx.co.kr
Mr C G Kim Managing Director	Korean Ocean Development Co. Ltd 2ND Fl, Dongbang Bldg, 25-4, 4 Ga Jungang-Dong, Jung-Gu, Busan, South Korea	Tel. No.: +82 514 66 0760 Fax No.: +82 514 65 9345 Email: sales@chartkorea.com Website: http://www.chartkorea.com

SINGAPORE ELECTRONIC NAVIGATIONAL CHARTS (ENC) DISTRIBUTORS
Please approach any of the appointed distributors to purchase the Singapore ENC.

CONTACT PERSON/ DESIGNATION	ADDRESS	TELEPHONE/FAX NO./EMAIL/WEBSITE
Mr Kjell Nodland	C-Map Norway A/S P.O Box 212 , N-4371 Egersund, Norway	Tel No.: +47 514 64 700 Fax No.: +47 514 64 701 Email: market@c-map.no Website : http://www.c-map.no
Mr Roar Moe International Marketing Coordinator	Maritime Information System AS (MARIS) Danholmen 25, No.3115 Tonsberg, Norway	Tel. No.: +47 33 30 42 50 Fax No.: +47 33 30 42 51 Email: roar.moe@maris.no Website: http://www.maris.no
Ms Eva Hegland Sales, order and distributor support.	PRIMAR STAVANGER Lervigsveien 36, P.O Box 60, N-4001 Stavanger, Norway	Tel. No.: +47 51 93 9500 Fax No.: +47 51 93 9501 Email: sales@primar.org Website : http://www.primar-stavanger.org
Mr Andy Criddle Regional Sales Manager	United Kingdom Hydrographic Office Admiralty Way, Taunton, Somerset TA1 2DN United Kingdom	Tel. No.: +44 (0)1823 337900 Fax No.: +44 (0)1823 284077 Emails: vargroup@ukho.gov.uk & andrew.criddle@ukho.gov.uk Website: http://www.ukho.gov.uk

Agents for the Maritime and Port Authority of Singapore Publications

Agent's name : **DPM (Singapore) Pte Ltd**
Address : 1 Maritime Square #09-72, HarbourFront Centre,
Singapore 099253
Telephone : (65) 6270 4060
Fax No. : (65) 6276 3858
E-mail : sales@dpmsingapore.com.sg
Internet Web Site : <http://www.dpmsingapore.com.sg>

Agent's name : **E.W. Liner Charts & Publications Pte Ltd**
Address : 102F, Pasir Panjang Road, #08-01, Citilink Warehouse Complex,
Singapore 118530
Telephone : (65) 6323 0773
Fax No. : (65) 6323 0775
E-mail : ewliner@singnet.com.sg
Internet Web Site : <http://www.ewliner.com>

Agent's name : **Motion Smith**
Address : 76 Shenton Way # 01-01
Singapore 079119
Telephone : (65) 6220 5098
: (After office hours: 8163 9993)
Fax No. : (65) 6225 4902
E-mail : sales@motsmith.com
Internet Web Site : <http://www.motsmith.com>

HYDROGRAPHIC NOTE - Instructions

1. Mariners are requested to notify the Chief Hydrographer, Maritime and Port Authority of Singapore, when new or suspected dangers to navigation are discovered, changes are observed in aids to navigation or where corrections to nautical publications may be necessary. Reports, which cannot be confirmed or are lacking in certain details should not be withheld.
2. Any ambiguities of time, positioning and depth should be stressed and any firm expectation of being able to check the information provided on a following voyage should be mentioned.
3. Mariners using satellite position fixing systems, eg. GPS, should provide details of equipment and datum used (where applicable). Where bearings (true or magnetic) are taken visually or by radar to fix a position, it should include more than two objects in order to provide a check on its accuracy. A position may also be defined by bearing and distance from a conspicuous object eg. beacon, lighthouse etc.
4. The note should include a tracing or a digital image of the chart used and the details should be clearly marked.
5. Echo sounders frequently register greater depths than the advertised maximum depth for the equipment, eg. a trace appearing at 50 metres may be in fact be 550 metres or even 1050 metres for equipment whose maximum depth is 500 metres. Erroneous depths caused by 2nd transmission error can usually be recognised by the following:
 - (a) the tracing being weaker than normal for the depth registered,
 - (b) the trace appearing to pass through the transmission line,
 - (c) the feathery nature of the trace.
6. An acknowledgement of receipt will be sent. When a Notice to Mariners is issued, the sender's vessel or name is quoted as the source unless the same information is also received in foreign Notices to Mariners.
7. Reports of shoals, uncharted dangers and defects in aids to navigation may also be made to the appropriate Singapore Port Operations Control Station on VHF Channels 10, 12, 14, 68 or 73.

HYDROGRAPHIC NOTE

To:

Chief Hydrographer
Hydrographic Department
Maritime and Port Authority of Singapore
460 Alexandra Road PSA Building #20-00
Singapore 119963

Tel : (65) 6375 1227
Fax : (65) 6278 7646
Email : hydrographic@mpa.gov.sg

Sender's Contact Details :

Date :
Name of Vessel :
Address of Sender :
Tel : Fax :
Email :

Nature of Observation :

General Location :
Subject :
Position : Lat. Long.
Charts Used :
Date & Time of Observation :
Details :
.....
.....
Attachment :

Equipment Used :

Type of Position Fixing : GPS / DGPS Others :
Type of Echo Sounder :

Name and Signature :

Ship's/Company's stamp :