



SINGAPOREAN NOTICES TO MARINERS

SECTION	CONTENT	Page
I	Index of Charts & Publications	228
II	New Publications	233
	Notices to Mariners and Chart Corrections	235
	Temporary and Preliminary Notices	237
III	Navigational Information	238
	Amendments to Publications	239
IV	Reprint of Radio Navigational Warnings	241
V	Reprint of Admiralty Notices to Mariners for Dual Badged Charts	242

The monthly Notices to Mariners contain corrective information affecting charts published by the Hydrographic Department, Maritime and Port Authority of Singapore. The information contained in these Notices should be updated on the charts affected. Notices under Section II apply only to the particular Singaporean Chart(s) indicated.

Mariners are requested to notify the Chief Hydrographer, Maritime and Port Authority of Singapore, immediately on the discovery of new dangers or suspected dangers to navigation and of changes or defects in aids to navigation. See Hydrographic Note on back page.

The monthly Singaporean Notices to Mariners can be accessed directly from the MPA website:

<http://www.mpa.gov.sg/> > Circulars & Notices > Singaporean NTM

or

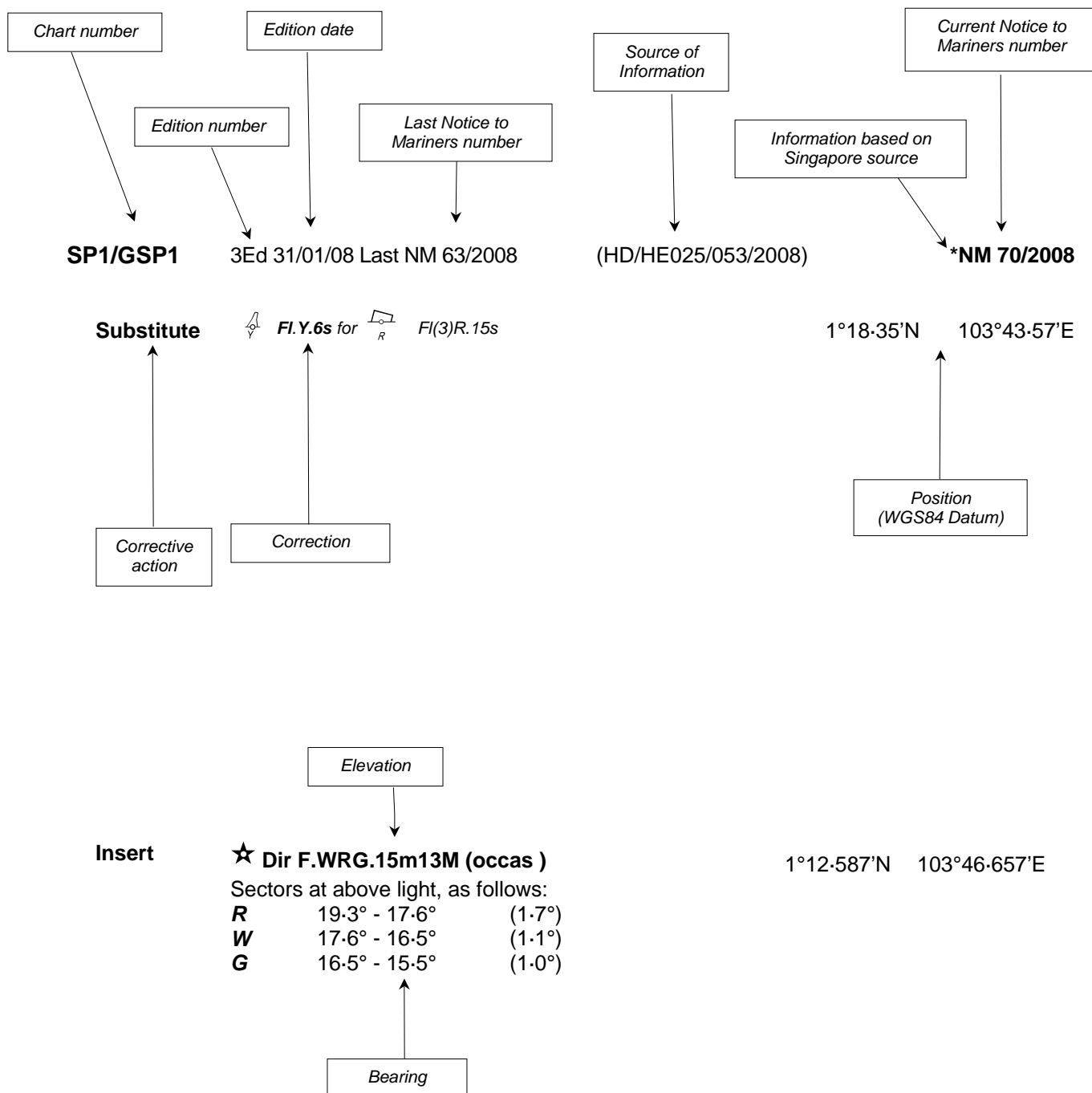
<http://www.mpa.gov.sg/infocentre/publications/noticesmari.htm>

This service is offered free of charge.

Hydrographic Department
Maritime and Port Authority of Singapore
460 Alexandra Road
PSA Building #20-00
Singapore 119963
Tel: (65) 6375 1227
Fax: (65) 6278 7646

EXPLANATION OF FORMAT

The elements of a typical chart correction are explained below.



Notes:

- a) Notice to Mariners number followed by:
 - T** indicates a Temporary Notice (eg. ***NM 80T/2008**).
 - P** indicates a Preliminary Notice (eg. ***NM 80P/2008**).
- b) Bearings are referred to True Compass in degrees clockwise from 000° to 359°. Bearings related to lights are from seaward.
- c) Heights and elevations are above Mean High Water Springs.

I
INDEX OF CHARTS AND PUBLICATIONS

DESCRIPTION	NOTICE NO.	PAGE NO.
Index of Singaporean Charts	-	230
Index of Dual Badged Charts	-	231
Index of Singapore Electronic Navigational Charts (ENC)	-	232
New Publication "SINGAPORE TIDE TABLES YEAR 2009"	-	233
New Edition Singaporean Charts	-	234
Singaporean Chart GSP1/SP1	*141, *142, 147T	235 237
Singaporean Chart 201	143, 144, 145, 146	235
Singaporean Chart 501	*141	236
Singaporean Chart 502	147T	237
Port Marine Notices	*148	238
Singaporean Print on Demand (POD) Charts	*149	238
Updating of Publication "SINGAPORE PORT INFORMATION 2008/2009 EDITION"	*150	239
Updating of Publication "SINGAPORE TIDE TABLES YEAR 2009"	*151	239
Singapore Electronic Navigational Charts (ENC) Distributors	-	244

* Denotes information are based on Singapore source.

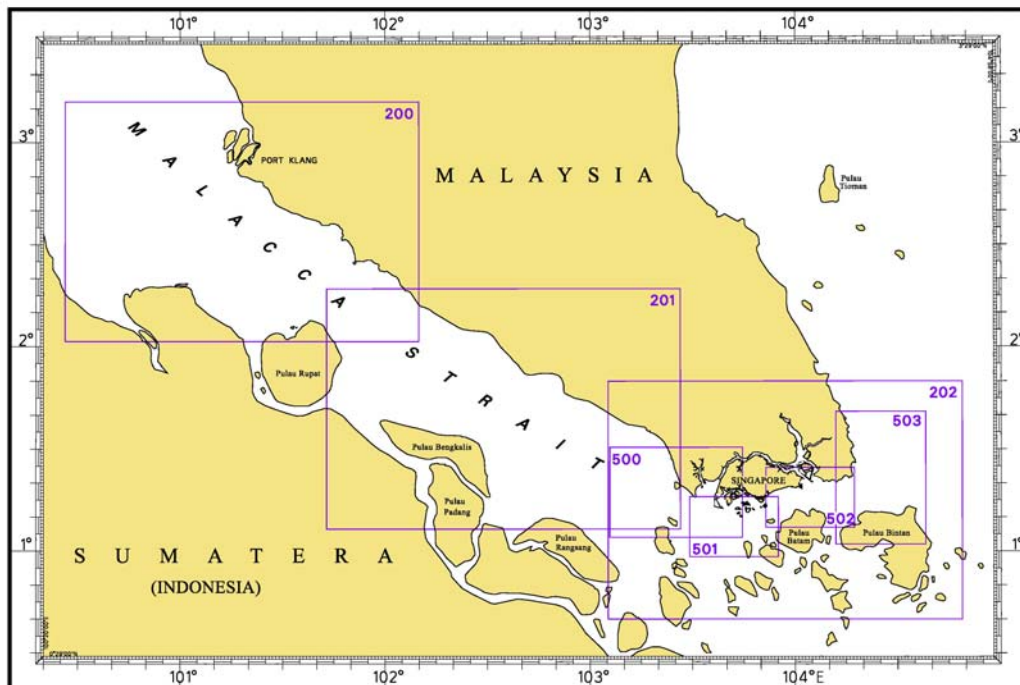
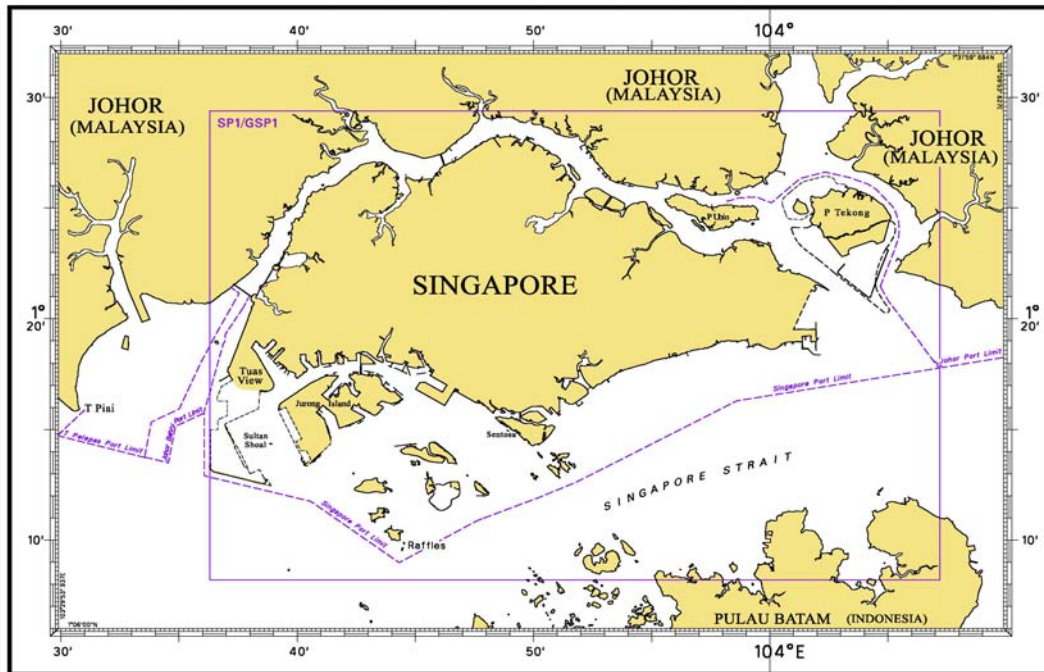
INDEX OF CHARTS AND PUBLICATIONS

NOTICE NO.	DESCRIPTION	PAGE NO.	NOTICE NO.	DESCRIPTION	PAGE NO.
	Index of Singaporean Charts	230			
	Index of Dual Badged Charts	231			
	Index of Singapore Electronic Navigational Charts (ENC)	232			
	New Publication "SINGAPORE TIDE TABLES 2009"	233			
	New Edition Singaporean Charts	234			
*141	SP1/GSP1	235			
	501	236			
*142	SP1/GSP1	235			
143	201	235			
144	201	235			
145	201	235			
146	201	235			
147T	SP1/GSP1	237			
	502	237			
*148	Port Marine Notices	238			
*149	Singaporean Print on Demand (POD) Charts	238			
*150	Updating of Publication "SINGAPORE PORT 2008/2009 EDITION"	239			
*151	Updating of Publication "SINGAPORE TIDE TABLES YEAR 2009"	240			
-	Singapore Electronic Navigational Charts (ENC) Distributors	243			

* Denotes information are based on Singapore source.

I INDEX OF CHARTS AND PUBLICATIONS

INDEX OF SINGAPOREAN CHARTS

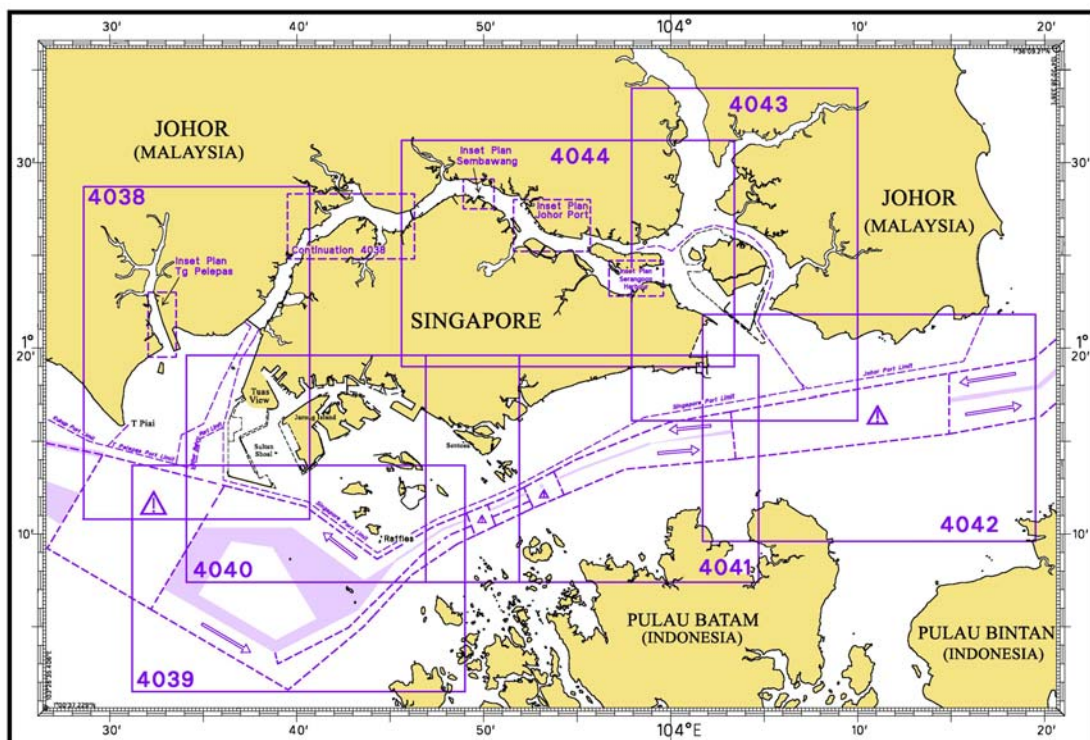
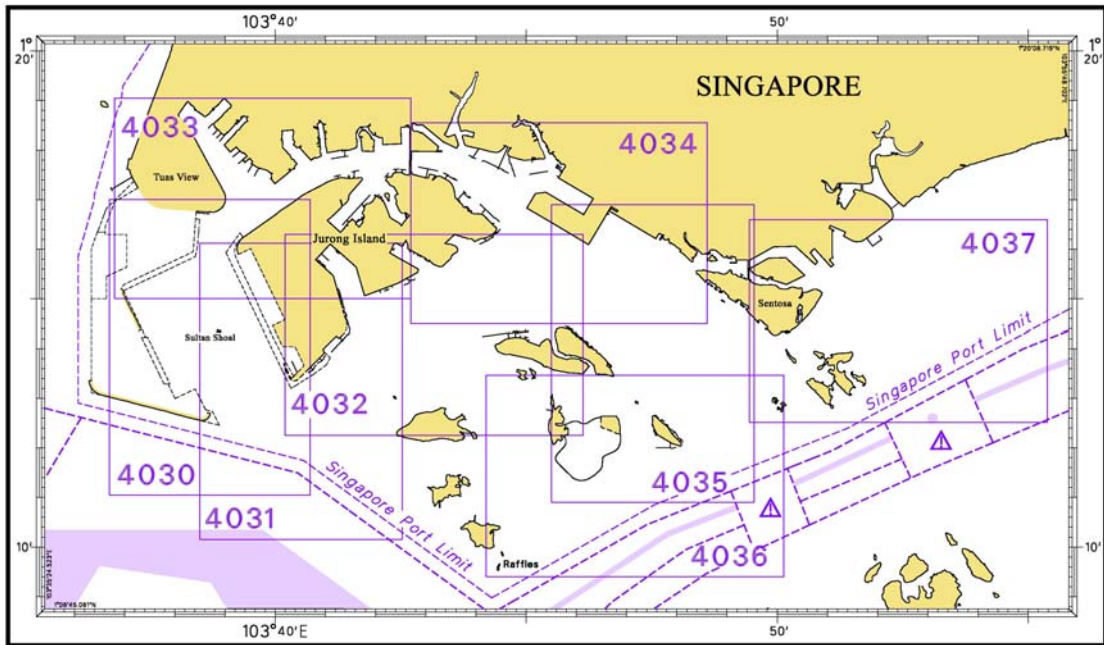


Notes:

Updated SINGAPOREAN Charts (excluding Charts SP1/GSP1) are available through our Print On Demand (POD) Chart Service. For more information, refer to Section III – Navigational Information and these charts can be purchased from our authorised Chart Agents:
DPM (Singapore) Pte Ltd, E.W. Liner Charts & Publications Pte Ltd and Motion Smith.

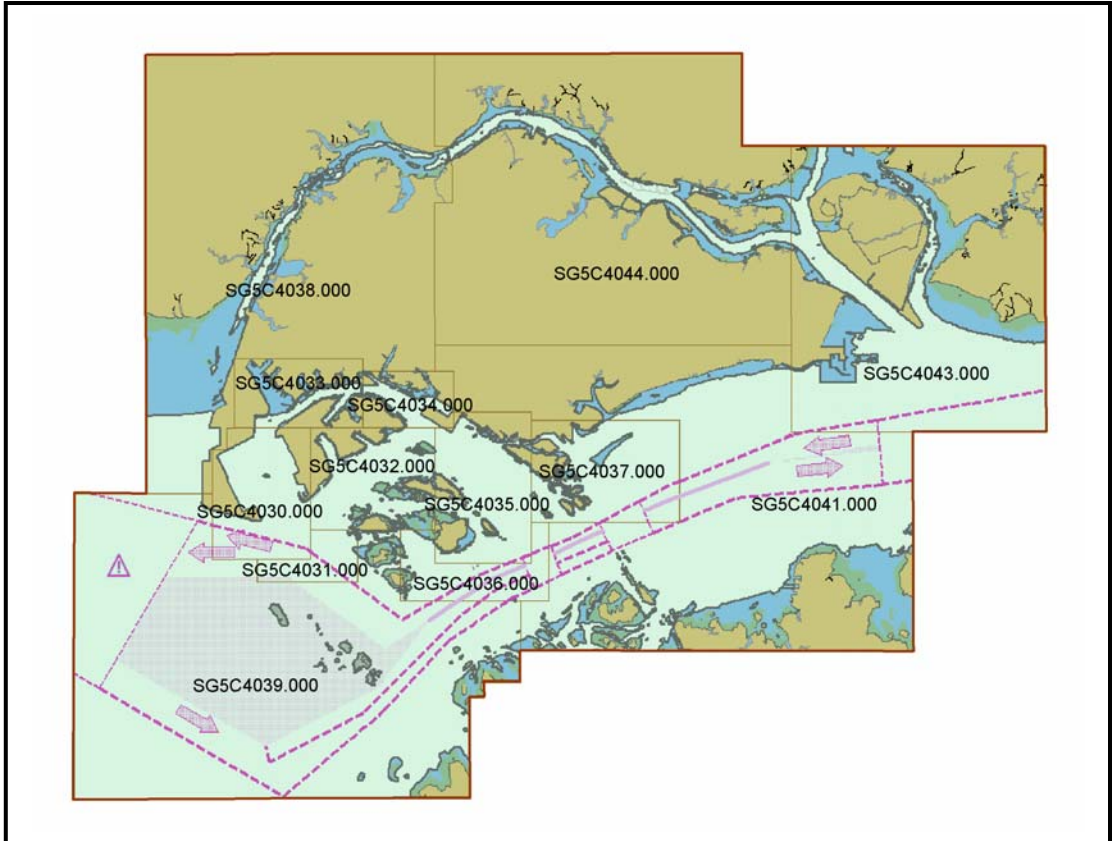
I INDEX OF CHARTS AND PUBLICATIONS

INDEX OF DUAL BADGED CHARTS

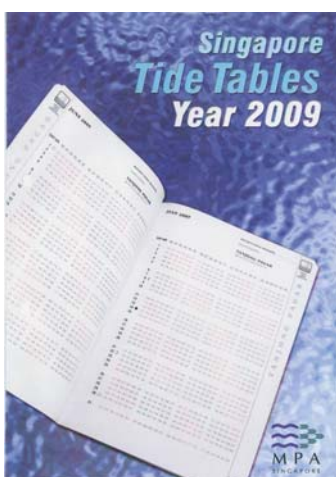


I
INDEX OF CHARTS AND PUBLICATIONS

INDEX OF SINGAPORE ELECTRONIC NAVIGATIONAL CHARTS (ENC)



II NEW PUBLICATIONS



SINGAPORE TIDE TABLES YEAR 2009 PUBLISHED ON 22 SEPTEMBER 2008

Summary of Publication

- (a) This 239 page book contains the following information:
The predictions consist of 5 main segments to facilitate easy reference:
- High and Low Water Predictions
 - Hourly Tidal Height Predictions
 - Hourly Tidal Stream Predictions
 - Maximum and Slack Tidal Stream Predictions
 - Malacca Strait – High and Low Water Predictions
- The predictions cover stations in Singapore and selected stations along the Malacca Strait.
- (b) As in earlier publications, the presentation of the predictions is enhanced with colour codes so as to differentiate the various states of tidal heights, eg falling or rising tide and tidal stream directions. Moon phases, eg full and new moon, are also included in each calendar month to complement the prediction values.
- (c) The tidal heights are given in metres above Chart Datum (CD). The CD is the datum of soundings shown on the Singaporean Charts and Dual Badged Charts covering the area. A table showing the various tidal levels eg. Mean High Water Springs, Mean Low Water Springs etc, at various stations with reference to CD is also included in this publication.

To Whom Will It Be Useful?

Mariners, shipping community, port users and other interested users.

Frequency of Publication

Annually.

Cost of Publication

To be advised by Chart Agents.

Order Enquires:

This publication is available from the following Chart Agents:

- 1) DPM (Singapore) Pte Ltd
 - 2) E.W. Liner Charts & Publications Pte Ltd
 - 3) Motion Smith
- (Please refer to Page 244 for details.)
-

II NEW PUBLICATIONS

NEW EDITION SINGAPOREAN CHARTS PUBLISHED ON 25 SEPTEMBER 2008

Chart No. : 502
Title : Singapore Strait - Eastern Part
Coverage : Lat 1° 07·00'N 1° 24·61' N
 Long 103° 51·43'E 104° 17·31'E
Scale : 1: 50 000 (WGS84 Datum)
Date Published : 25 September 2008
Size of chart : 960.0 x 649.2 mm
Remarks : This new edition includes new submarine cables and updated surveys covering :









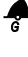


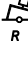
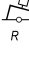

- Eastern Anchorage
- Eastern Bunkering Anchorages
- Eastern Special Purposes D Anchorage
- Changi General Purposes Anchorage
- Man-of-War Anchorage
- Eastern Fairway
- East Keppel Fairway
- Area South of Pulau Tekong
- Cable Corridor Area off Tanah Merah Ferry Terminal

This new edition supersedes the earlier edition published on 25 October 2005.

Chart No. : 503
Title : Eastern Approaches And Entrance To Singapore Strait
Coverage : Lat 1° 02·00'N 1° 41·06' N
 Long 104° 11·89'E 104° 38·17'E
Scale : 1: 75 000 (WGS84 Datum)
Date Published : 25 September 2008
Size of chart : 649.9 x 960.0 mm
Remarks : This new edition includes new submarine cables.

This new edition supersedes the earlier edition published on 15 September 2004.

II NOTICES TO MARINERS AND CHART CORRECTIONS

SP1/GSP1	3Ed 31/01/08 Last 132/2008	(HD/HY Code F00107108)	*NM 141/2008
Insert	 Obstrn		1°11-12'N 103°47-65'E
		(HD/HE025/138/2008)	*NM 142/2008
Insert	 Q(3)10s6m3M East Jurong		1°18-00'N 103°43-69'E
<hr/>			
201	3Ed 5/10/07 Last 111/2008	(Admiralty Notices 40/5416/2008)	NM 143/2008
Insert			1°21-73'N 102°10-94'E
	 Fl.7s		1°20-94'N 102°10-10'E
		(Admiralty Notices 40/5417/2008)	NM 144/2008
Insert	 Fl(2)10s28m16M		1°35-47'N 102°46-70'E
Delete	 Fl(2)10s		1°35-97'N 102°46-07'E
		(Admiralty Notices 41/5584/2008)	NM 145/2008
Amend	light to, Fl.3s13m10M		1°11-77'N 102°09-38'E
		(Admiralty Notices 44/5976/2008)	NM 146/2008
Insert	 Fl.R.4s No 4		1°11-97'N 102°14-08'E
	 Fl.G.4,5s No 3		1°12-51'N 102°13-00'E
	 Fl.G.1,5s		1°09-48'N 102°13-41'E
Amend	light-beacon to, LFl.15s13m11M		1°11-17'N 102°12-90'E
Substitute	 Fl.G.2,5s No 1 for  Q.G		1°14-46'N 102°11-40'E
	 Fl.R.4s No 2 for  Fl.R.4s		1°20-34'N 102°12-00'E
Delete	★ Iso.2s15m8M		1°13-20'N 102°11-50'E
	★ Iso.2s18m8M	(a)	1°13-10'N 102°11-50'E
	★ Iso.2s15m8M & F.Y leading line, pecked and firm line, and associated legend, Ldg Lts 180°, extending in direction 0° from:	(a) above	1°13-08'N 102°11-59'E
	 Mo(U)15s		1°09-63'N 102°13-31'E

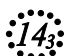
II
NOTICES TO MARINERS AND CHART CORRECTIONS

501

4Ed 21/09/06 Last 134/2008

(HD/HY Code F00107108)


***NM 141/2008**

Substitute  *Obstn* for depth *15*₉


1°11-12'N 103°47-65'E

II
TEMPORARY AND PRELIMINARY NOTICES

SP1/GSP1 3Ed 31/01/08 Last 132/2008 (Indonesian NM 39/336/2008) **NM 147T/2008**

Insert  **Q Racon (D) (extinguished)** 1°13.45'N 103°57.70'E

502 4Ed 25/09/08 New Edition (Indonesian NM 39/336/2008) **NM 147T/2008**

Insert  **Q Racon (D) (extinguished)** 1°13.45'N 103°57.70'E

III NAVIGATIONAL INFORMATION

*(NM 148/2008) PORT MARINE NOTICES

The following PMNs have been shortlisted, as they would be of particular interest to mariners.

These notices can be accessed directly from MPA website:

http://www.mpa.gov.sg/circulars_and_notices/portmarine_notices/pm_notices.htm

PMN No.	Subject
177/2008	Reclamation at Pasir Panjang Terminal and Pasir Panjang Wharves.
181/2008	Dredging and construction of berths (P13 to P18) and stacking/storage yards at Pasir Panjang Terminal.
186/2008	Sand mining at Area 1 and dumping at (i) Jurong Island LNG Project and (ii) Pasir Panjang Terminal project working areas.
188/2008	Construction of a new bridge from Pulau Brani to Sentosa.
189/2008	Widening of existing causeway and causeway extension works.
190/2008	Marine jetty construction works at Tuas Basin (Keppel Tuas Yard).

*(NM 149/2008) SINGAPOREAN PRINT ON DEMAND (POD) CHARTS

Print On Demand (POD) Charts are the most up-to-date paper nautical charts printed for navigational use. These nautical charts are produced in accordance with the International Hydrographic Organisation (IHO) charting specifications. These official nautical charts are continually updated to the latest Notices to Mariners before they are printed and sold to users.

These POD Charts include 200, 201, 202, 500, 501, 502, 503.

BENEFITS TO OUR CUSTOMERS

Convenience

Customers need not make numerous hand corrections to the nautical charts before use. In addition the updated POD Charts are more accurate and reliable than offset printed charts with hand corrections.

Clarity

Clarity in the presentation of updated information as compared to lithographic printed charts, where in some cases there are several overlapping corrections over existing information.

Coverage

The POD Charts cover the Malacca and Singapore Straits, from One Fathom Bank to Horsburgh Lighthouse.

III AMENDMENTS TO PUBLICATIONS

***(NM 150/2008) UPDATING OF PUBLICATION "SINGAPORE PORT INFORMATION 2008/2009 EDITION"**

1 Page 136 – Item 3

BRANI TERMINAL (PSA Corporation Ltd)(1°15-7'N, 103°50-2'E)

Insert the following:

Berth	Depth Alongside (Year Surveyed)	
	Delete	Insert
B1	11.2m(2007)	12.0m(2008)
B2	10.7m(2007)	12.0m(2008)

Source: HD/HY Code B00103508, B00103308

2 Page 139 – Item 7

PASIR PANJANG TERMINAL (PSA Corporation Ltd)(1°17-2'N, 103°46-1'E)

Insert the following:

Berth	Length of Berth	Depth Alongside (Year Surveyed)
P18	326m	16.0m (2008)

Source: HD/HY Code C00112608

3 Page 145 – Item 20

JURONG TERMINAL (JURONG PORT PTE LTD)(1°18-3'N, 103°43-1'E)

Insert the following:

Berth	Length of Berth	Depth Alongside (Year Surveyed)
J1A	125m	5.0m (2008)
J1B	220m	5.0m (2008)

Source: HD/HY Code J00103608

Berth	Length of Berth	Depth Alongside (Year Surveyed)
J1C	130	5.0m (2008)
J2A	150	6.7m (2008)

Source: HD/HY Code J00104508

Berth	Depth Alongside (Year Surveyed)	
	Delete	Insert
J4	13.0m(2007)	12.9m(2007)
J5	13.0m(1997)	11.7m(2007)
J6	13.0m(1997)	11.0m(2007)
J7	12.1m(1998)	11.5m(2007)

Source: HD/HY Code J00107407

**III
AMENDMENTS TO PUBLICATIONS**

4 Page 154 – Item 41

**JURONG ISLAND – BANYAN BASIN
(VOPAK TERMINALS SINGAPORE PTE LTD)(1°15-9’N, 103°41-0’E)**

Insert the following:

Berth	Length of Berth		Depth Alongside (Year Surveyed)	
	Delete	Insert	Delete	Insert
OBV2	-	-	16.5m(2007)	16.8m(2008)
OBV3	-	-	11.5m(2007)	11.5M(2008)
OBV4	204m	146	15.5m(2007)	15.8m(2008)
OBV5	-	260	-	15.2m(2008)

Source: HD/HY Code E00102608

***(NM 151/2008) CORRIGENDUM “SINGAPORE TIDE TABLES YEAR 2009”**

For pages 15 to 22, the high waters which appear in red should read in black and the low waters which appear in black should read in red.

IV
REPRINT OF RADIO NAVIGATIONAL WARNINGS

Nil

V
**REPRINT OF ADMIRALTY NOTICES TO MARINERS
 FOR DUAL BADGED CHARTS**

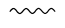

These notices can be accessed directly from UKHO Website:

<http://www.ukho.gov.uk/amd/weeklyNms.asp>

5952* SINGAPORE STRAIT – Malaysia – Teluk Ramunia South-eastwards – Submarine cable.

Source: Maritime and Port Authority of Singapore

Chart 4042 [*previous update New Edition 24/07/2008*] WGS84 DATUM

Insert	submarine cable,  , joining:	(a) 1° 18'.94N., 104° 14'.89E. (existing cable) 1° 18'.95N., 104° 14'.99E. 1° 18'.91N., 104° 15'.14E. (b) 1° 18'.98N., 104° 15'.20E. (existing cable)
Delete	former submarine cable,  , joining:	(a) above (b) above

5956* SINGAPORE – East Jurong Channel – Jurong Island North-eastwards – Dredged depths.

Source: Maritime and Port Authority of Singapore

Chart 4034 [*previous update 5026/08*] WGS84 DATUM

Amend	dredged depth to, <i>12.8m (2008), centred on:</i> dredged depth to, <i>15.5m (2008), centred on:</i>	1° 16'.812N., 103° 44'.146E. 1° 17'.629N., 103° 43'.146E.
-------	--	--

5957* SINGAPORE – East Jurong Channel – Jurong Terminal South-eastwards – Rock.

Source: Maritime and Port Authority of Singapore

Chart 4034 [*previous update 5956/08*] WGS84 DATUM

Substitute	 (14 ₄) for  (14 ₉)	1° 17'.916N., 103° 43'.664E.
------------	---	------------------------------

5962* SINGAPORE – Tanjong Pagar Terminal Eastwards – Buoy.

Source: Maritime and Port Authority of Singapore

Chart 4037 [*previous update 5026/08*] WGS84 DATUM

Insert	 <i>Fl.Y.4s TP3</i>	1° 15'.831N., 103° 51'.109E.
--------	--	------------------------------

Updated to Admiralty Notices to Mariners Edition No. 44 of 2008 dated 30 October 2008.

SINGAPORE ELECTRONIC NAVIGATIONAL CHARTS (ENC) DISTRIBUTORS
Please approach any of the appointed distributors to purchase the Singapore ENC.

CONTACT PERSON/ DESIGNATION	ADDRESS	TELEPHONE/FAX NO./EMAIL/WEBSITE
Mr Chong Chee Meng General Manager	DPM (Singapore) Pte Ltd 1 Maritime Square, #09-72 Harbour Front Centre, Singapore 099253	Tel. No.: +65 6270 4060 Fax No.: +65 6276 3858 Email: sales@dpmsingapore.com.sg Website: http://www.dpmsingapore.com.sg
Mr Hamzah Akhbar MDS Branch Manager	Kelvin Hughes(S) Pte Ltd 8 Pandan Avenue #02-00, Singapore 609384	Tel. No.: +65 6545 9880 ext.24 Fax No.: +65 6545 8892 Email: hamzah.akhbar@khsing.com Website: http://www.kelvinhughes.co.uk
Mr Looi Keen Wai Regional Sales Manager	Maritime Information Systems (MARIS) 52, Telok Blangah Road #01-06, Telok Blangah Centre, Singapore 058809	Tel. No.: +65 6276 1472 Fax No.: +65 6276 1473 Email: support@maris.sg Website: http://www.maris.no
Ms Kathrine Bjaroy Marketing Coordinator	Maritime Information System AS (MARIS) Danholmen 25, 3128 Notteroy, Norway	Tel. No.: +47 33 30 42 50 Fax No.: +47 33 30 42 51 Email: roar.moe@maris.no Website: http://www.maris.no
Mr Bernard Wong Sales Manager	Motion Smith 15 Jalan Kilang Barat #08-01/05 Frontech Centre Singapore 159357	Tel. No.: +65 6220 5098 Fax No.: +65 6225 4902 Email: sales@motsmith.com Website: http://www.motsmith.com
Mr Dominic Oliver	Transas Marine Pacific Pte Ltd 750C Chai Chee Road, #04-07, Technopark@Chai Chee, Singapore 469003	Tel. No.: +65 6443 3061 Fax No.: +65 6443 3025 Email: dominic@transas.com.sg Website: http://www.transas.com.sg
Mr Choy Kum Weng Director	Vector Services Pte Ltd 15 West Coast Highway, #02-14A Pasir Panjang Building Singapore 117861	Tel. No.: +65 6777 3602 Fax No.: +65 6777 9203 Email: kwchoy@pacific.net.sg
Mr George Arts President	Marine Press of Canada 640 Rue St-Paul Ouest, Suite 300 Montreal (QC) Canada, H3C1L9	Tel. No.: (514) 866-8342 Fax No.: (514) 866-9050 Email : sales@marinepress.com Website: http://www.marinepress.com
Mr Thomas Wilde Superintendent	HanseNautic GmbH Bade & Hornig, Eckardt & Messtorff Herrengaben 31 D-20459 Hamburg, Germany	Tel. No.: +49 40 374 811-32 Fax No.: +49 40 366 400 Email: wilde@hansenautic.de Website : http://www.HanseNautic.com
Ms Verena Borsos Manager	SevenCs AG + Co. KG Ruhrstrasse 90, D-22761 Hamburg, Germany	Tel. No.: +49 40 853 58 6940 Fax No.: +49 40 853 58 6949 Email: sales@chartworld.com Website : http://www.sevencs.com
Mr Keiji Shimizu General Manager	Japan Hydrographic Association Electronic Charts Division Daiichi Sogo Bldg, 6F 1-6-6, Hanedakuko, Ota-ku, Tokyo 144-0041, Japan	Tel. No.: +81 3 5708 7093 Fax No.: +81 3 5708 7094 Email: enc-support@jha.jp Website: http://www.jha.jp

SINGAPORE ELECTRONIC NAVIGATIONAL CHARTS (ENC) DISTRIBUTORS
Please approach any of the appointed distributors to purchase the Singapore ENC.

CONTACT PERSON/ DESIGNATION	ADDRESS	TELEPHONE/FAX NO./EMAIL/WEBSITE
Mr Jester-Kim Foreign Business Department Manager	E_MLX Co. Ltd Ssangyong Research No.2 Lab Sinseong-Dong 100 Yusong-Gu, Daejoen 305-804, Korea (ROK)	Tel. No.: +82 42 865 1893 Fax No.: +82 42 865 1884 Email: Jester-kim@emlx.co.kr
Mr C G Kim Managing Director	Korean Ocean Development Co. Ltd 2ND Fl, Dongbang Bldg, 25-4, 4 Ga Jungang-Dong, Jung-Gu, Busan, South Korea	Tel. No.: +82 514 66 0760 Fax No.: +82 514 65 9345 Email: sales@chartkorea.com Website: http://www.chartkorea.com
Mr Kjell Nodland	Jeppesen Norway A/S P.O Box 212 , N-4379 Egersund, Norway	Tel No.: +47 514 64 700 Fax No: +47 514 64 701 Email: enc@c-map.no Website : http://www.c-map.no
Ms Eva Hegland Sales, order and distributor support.	PRIMAR STAVANGER Lervigsveien 36, P.O Box 60, N-4001 Stavanger, Norway	Tel. No.: +47 51 93 9500 Fax No.: +47 51 93 9501 Email: sales@primar.org Website : http://www.primar-stavanger.org
Mrs Christine Trickett Product Manager	United Kingdom Hydrographic Office Admiralty Way, Taunton, Somerset TA1 2DN United Kingdom	Tel. No.: +44 (0)1823 337900 Fax No.: +44 (0)1823 284077 Emails: vargroup@ukho.gov.uk & christine.trickett@ukho.gov.uk Website: http://www.ukho.gov.uk

Agents for the Maritime and Port Authority of Singapore Publications

Agent's name : **DPM (Singapore) Pte Ltd**
Address : 1 Maritime Square #09-72, HarbourFront Centre,
Singapore 099253
Telephone : (65) 6270 4060
Fax No. : (65) 6276 3858
E-mail : sales@dpmsingapore.com.sg
Internet Web Site : <http://www.dpmsingapore.com.sg>

Agent's name : **E.W. Liner Charts & Publications Pte Ltd**
Address : 102F, Pasir Panjang Road, #08-01, Citilink Warehouse Complex,
Singapore 118530
Telephone : (65) 6323 0773
Fax No. : (65) 6323 0775
E-mail : ewliner@singnet.com.sg
Internet Web Site : <http://www.ewliner.com>

Agent's name : **Motion Smith**
Address : 15 Jalan Kilang Barat
#08-01/05 Frontech Centre,
Singapore 159357
Telephone : (65) 6220 5098
: (After office hours: 8163 9993)
Fax No. : (65) 6225 4902
E-mail : sales@motsmith.com
Internet Web Site : <http://www.motsmith.com>

HYDROGRAPHIC NOTE - Instructions

1. Mariners are requested to notify the Chief Hydrographer, Maritime and Port Authority of Singapore, when new or suspected dangers to navigation are discovered, changes are observed in aids to navigation or where corrections to nautical publications may be necessary. Reports, which cannot be confirmed or are lacking in certain details should not be withheld.
2. Any ambiguities of time, positioning and depth should be stressed and any firm expectation of being able to check the information provided on a following voyage should be mentioned.
3. Mariners using satellite position fixing systems, eg. GPS, should provide details of equipment and datum used (where applicable). Where bearings (true or magnetic) are taken visually or by radar to fix a position, it should include more than two objects in order to provide a check on its accuracy. A position may also be defined by bearing and distance from a conspicuous object eg. beacon, lighthouse etc.
4. The note should include a tracing or a digital image of the chart used and the details should be clearly marked.
5. Echo sounders frequently register greater depths than the advertised maximum depth for the equipment, eg. a trace appearing at 50 metres may be in fact be 550 metres or even 1050 metres for equipment whose maximum depth is 500 metres. Erroneous depths caused by 2nd transmission error can usually be recognised by the following:
 - (a) the tracing being weaker than normal for the depth registered,
 - (b) the trace appearing to pass through the transmission line,
 - (c) the feathery nature of the trace.
6. An acknowledgement of receipt will be sent. When a Notice to Mariners is issued, the sender's vessel or name is quoted as the source unless the same information is also received in foreign Notices to Mariners.
7. Reports of shoals, uncharted dangers and defects in aids to navigation may also be made to the appropriate Singapore Port Operations Control Station on VHF Channels 10, 12, 14, 68 or 73.

HYDROGRAPHIC NOTE

To:

Chief Hydrographer
Hydrographic Department
Maritime and Port Authority of Singapore
460 Alexandra Road PSA Building #20-00
Singapore 119963

Tel : (65) 6375 1227
Fax : (65) 6278 7646
Email : hydrographic@mpa.gov.sg

Sender's Contact Details :

Date :

Name of Vessel :

Address of Sender :

Tel : Fax :

Email :

Nature of Observation :

General Location :

Subject :

Position : Lat. Long.

Charts Used :

Date & Time of Observation :

Details :

.....

.....

.....

Attachment :

Equipment Used :

Type of Position Fixing : GPS / DGPS Others :

Type of Echo Sounder :

Name and Signature :

Ship's/Company's stamp :