



SINGAPOREAN NOTICES TO MARINERS

SECTION	CONTENT	Page
I	Index of Charts & Publications	206
II	New Publications	211
	Notices to Mariners and Chart Corrections	212
	Temporary and Preliminary Notices	213
III	Navigational Information	214
	Amendments to Publications	216
IV	Reprint of Radio Navigational Warnings	217
V	Reprint of Admiralty Notices to Mariners for Dual Badged Charts	218

The monthly Notices to Mariners contain corrective information affecting charts published by the Hydrographic Department, Maritime and Port Authority of Singapore. The information contained in these Notices should be updated on the charts affected. Notices under Section II apply only to the particular Singaporean Chart(s) indicated.

Mariners are requested to notify the Chief Hydrographer, Maritime and Port Authority of Singapore, immediately on the discovery of new dangers or suspected dangers to navigation and of changes or defects in aids to navigation. See Hydrographic Note on back page.

The monthly Singaporean Notices to Mariners can be accessed directly from the MPA website:
[http://www.mpa.gov.sg/sites/port_and_shipping/circulars_and_notices/singapore_notices_to_mariners\(ntm\).page](http://www.mpa.gov.sg/sites/port_and_shipping/circulars_and_notices/singapore_notices_to_mariners(ntm).page)

This service is offered free of charge.

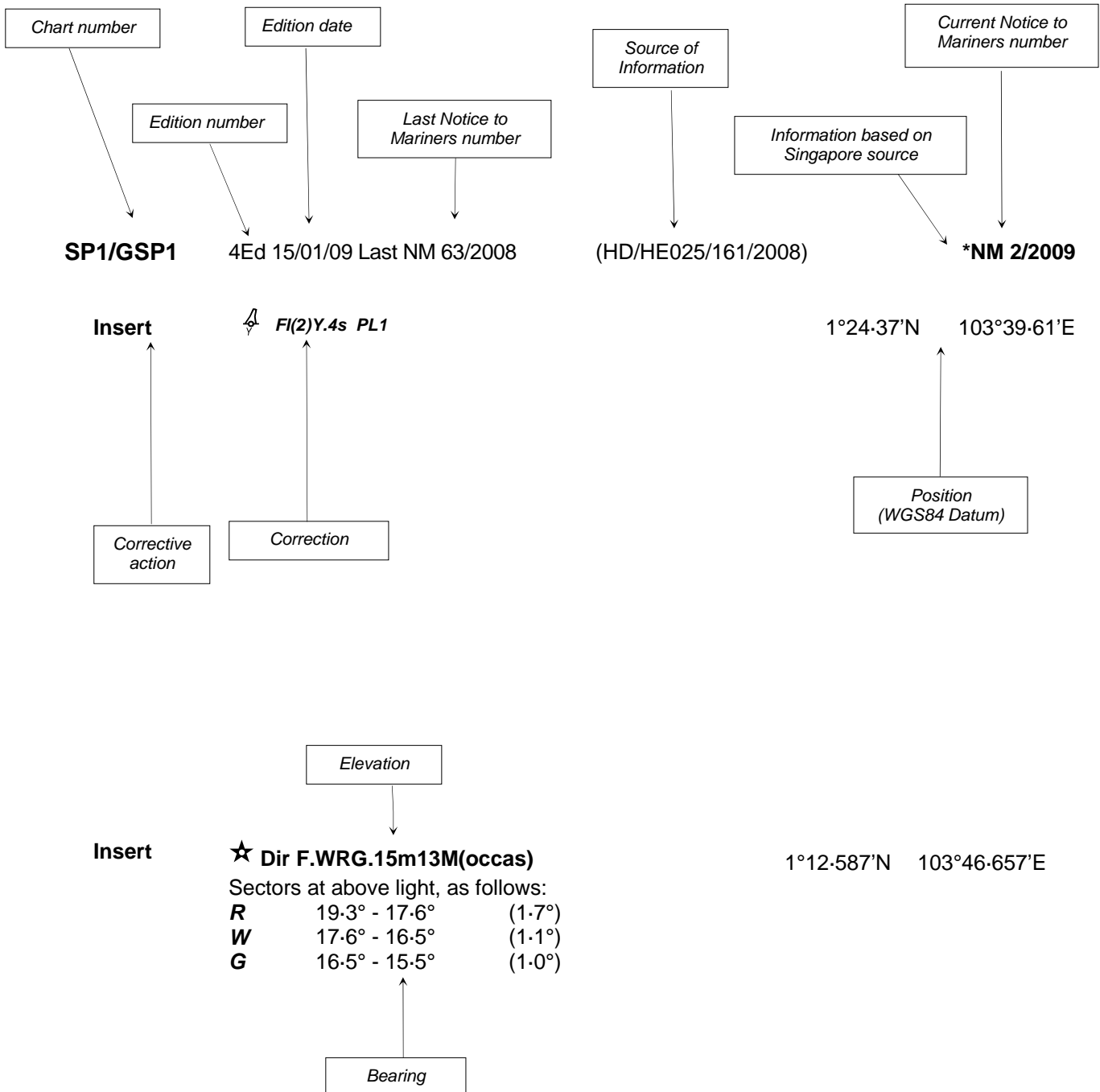
The Chief Hydrographer of
 Maritime and Port Authority of Singapore
 wishes all users of Singaporean and Dual Badged Charts

“SELAMAT HARI RAYA AIDILADHA”

Hydrographic Department
 Maritime and Port Authority of Singapore
 460 Alexandra Road
 PSA Building #20-00
 Singapore 119963
 Tel: (65) 6375 1227
 Fax: (65) 6278 7646

EXPLANATION OF FORMAT

The elements of a typical chart correction are explained below.



Notes:

- a) Notice to Mariners number followed by:
 - T** indicates a Temporary Notice (eg. *NM 1T/2009).
 - P** indicates a Preliminary Notice (eg. *NM 1P/2009).
- b) Bearings are true reckoned clockwise from 000° to 359° ; those relating to lights are from seaward.
- c) Heights and elevations are above Mean High Water Springs.

I
INDEX OF CHARTS AND PUBLICATIONS

DESCRIPTION	NOTICE NO.	PAGE NO.
Index of Singaporean Charts	-	208
Index of Dual Badged Charts	-	209
Index of Singapore Electronic Navigational Charts (ENC)	-	210
New Edition Dual Badged Charts	-	211
Singaporean Chart SP1/GSP1	*103	212
Singaporean Chart 201	104	212
Singaporean Chart 500	104	212
Temporary and Preliminary Notices	105T	213
Port Marine Notices	*106	214
Submarine cable repair work - Singapore Strait	*107	214
Singaporean Print On Demand (POD) Charts	*108	214
Updating of Publication "SINGAPORE PORT INFORMATION 2008/2009 EDITION"	*109	216
Reprint of Radio Navigational Warnings	-	217
Reprint of Admiralty Notices to Mariners for Dual Badged Charts	-	218
Singapore Electronic Navigational Charts (ENC) Distributors	-	219

* Denotes information are based on Singapore source.

I

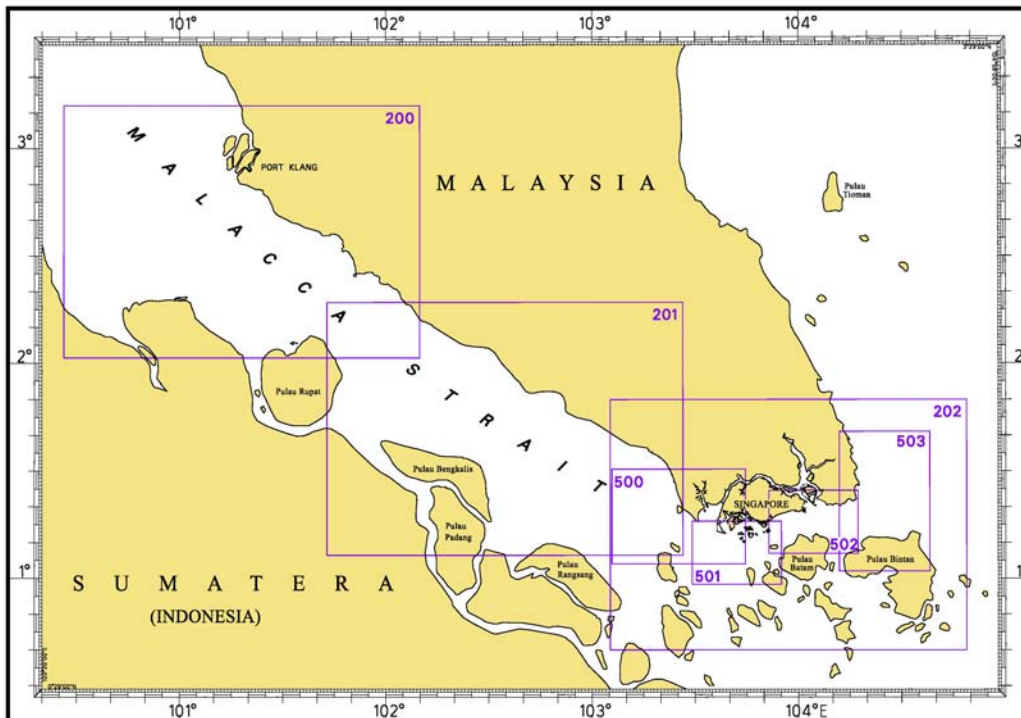
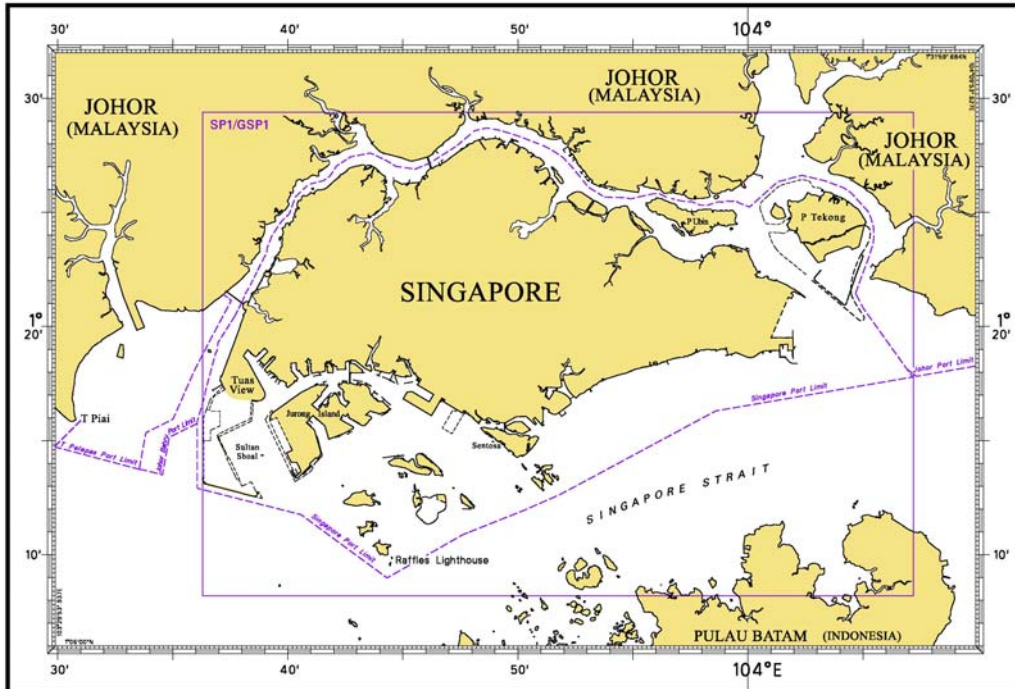
INDEX OF CHARTS AND PUBLICATIONS

NOTICE NO.	DESCRIPTION	PAGE NO.	NOTICE NO.	DESCRIPTION	PAGE NO.
-	Index of Singaporean Charts	208			
-	Index of Dual Badged Charts	209			
-	Index of Singapore Electronic Navigational Charts (ENC)	210			
-	New Edition Dual Badged Charts	211			
*103	SP1/GSP1	212			
104	201	212			
105T	Temporary and Preliminary Notices	213			
*106	Port Marine Notices	214			
*107	Submarine cable repair Work – Singapore Strait	214			
*108	Singaporean Print On Demand (POD) Charts	214			
*109	Updating of Publication “SINGAPORE PORT INFORMATION 2008/2009 EDITION”	216			
-	Reprint of Radio Navigational Warnings	217			
-	Reprint of Admiralty Notices to Mariners for Dual Badged Charts	218			
-	Singapore Electronic Navigational Charts (ENC) Distributors	219			

* Denotes information are based on Singapore source.

I INDEX OF CHARTS AND PUBLICATIONS

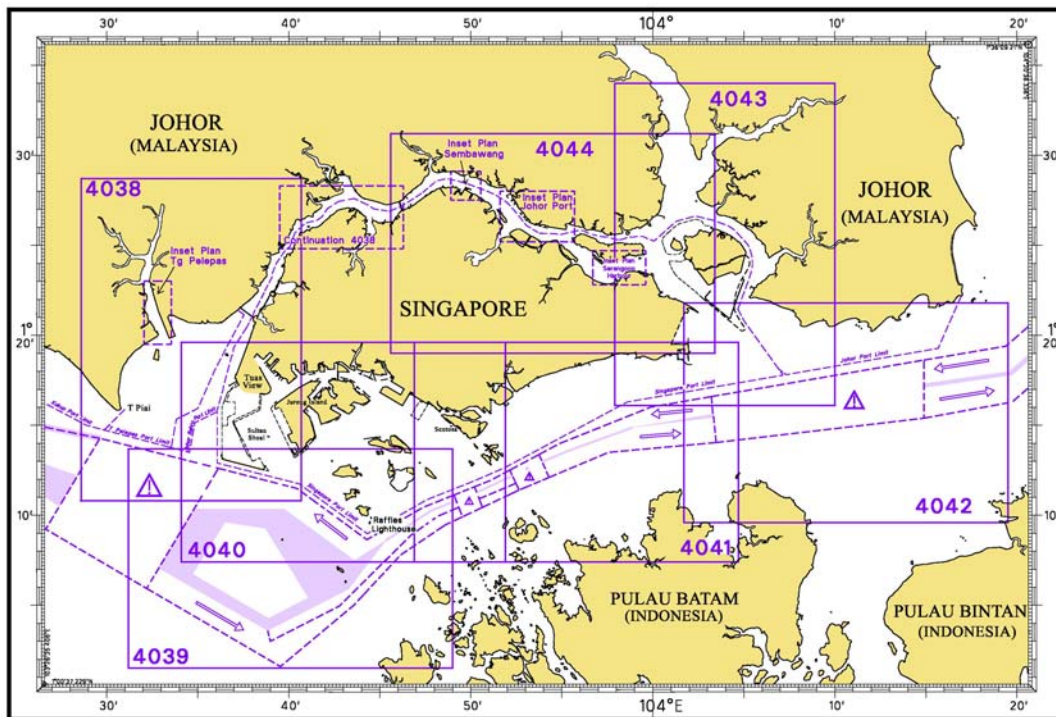
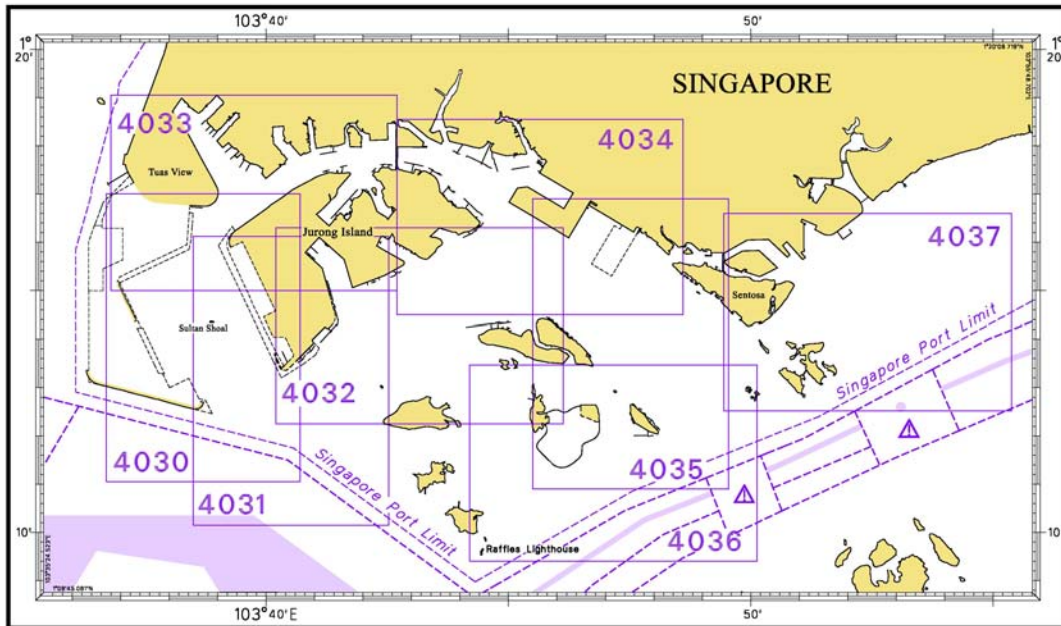
INDEX OF SINGAPOREAN CHARTS



Notes:
 Updated SINGAPOREAN Charts (excluding Charts SP1/GSP1) are available through our Print On Demand (POD) Chart Service. For more information, refer to Section III – Navigational Information and these charts can be purchased from our authorised Chart Agents:
 DPM (Singapore) Pte Ltd, E.W. Liner Charts & Publications Pte Ltd and Motion Smith.

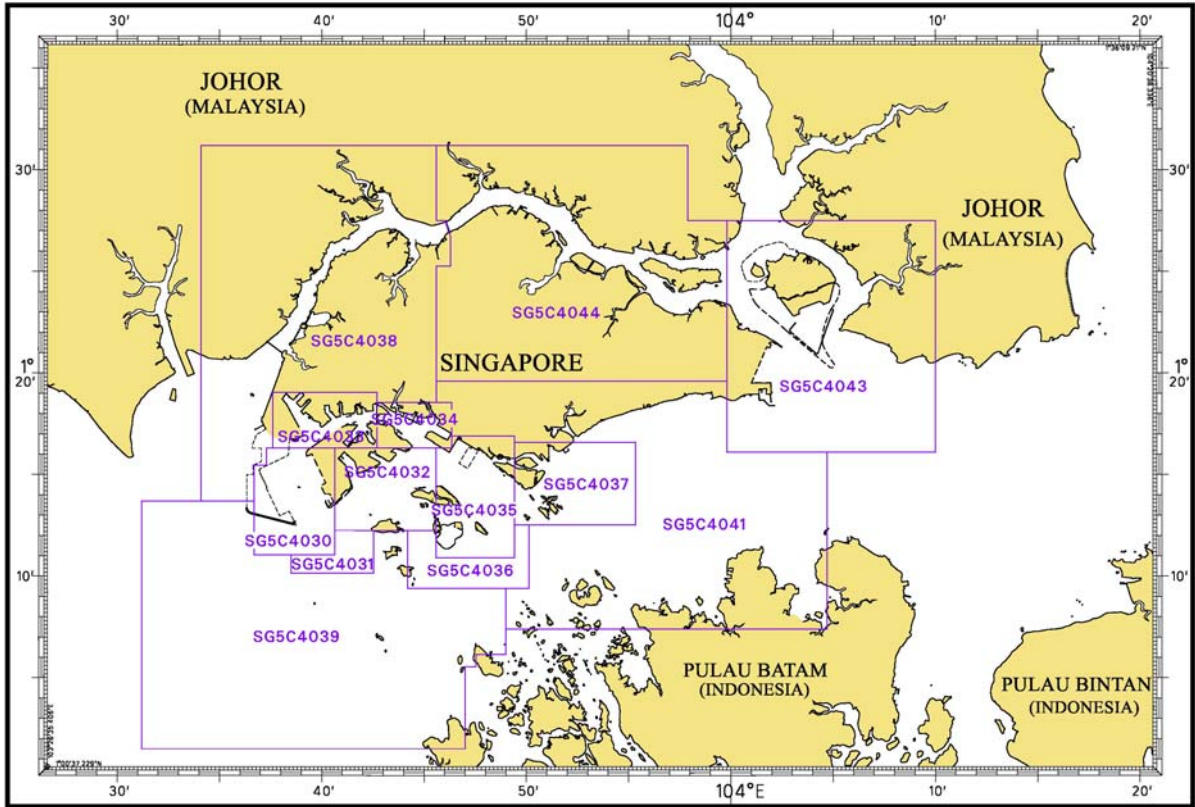
I INDEX OF CHARTS AND PUBLICATIONS

INDEX OF DUAL BADGED CHARTS



I
INDEX OF CHARTS AND PUBLICATIONS

INDEX OF SINGAPORE ELECTRONIC NAVIGATIONAL CHARTS (ENC)



II NEW PUBLICATIONS

NEW EDITION DUAL BADGED CHARTS PUBLISHED ON 8TH OCTOBER 2009


Chart Number	:	4034
Title	:	Port of Singapore – East Jurong Channel, Pasir Panjang Terminal and West Keppel Fairway
Coverage	:	Lat 01° 14.50'N 01° 18.55' N Long 103° 42.70'E 103° 48.60' E
Scale	:	1: 10 000
Date Published	:	8th October 2009
Size of Chart	:	1094.3 x 746.3 mm
Remarks	:	This new edition includes: - <ul style="list-style-type: none"> • Northern part of Damar Laut Basin • Entrance to Sungei Jurong • Pasir Panjang Terminal Berths P13 to P15 • Off Tanjong Penjuru • Approaches to Pasir Panjang Reclamation Area • Selat Sinki and Selat Pandan • Ayer Merbau Basin • West Keppel Fairway

This existing chart of the same number published on 19th February 2009 is superseded.

Chart Number	:	4035
Title	:	Port of Singapore – Western Anchorages, Jong Fairway and Cruise Bay
Coverage	:	Lat 01° 10.90'N 01° 16.90' N Long 103° 45.50'E 103° 49.54' E
Scale	:	1: 10 000
Date Published	:	8th October 2009
Size of Chart	:	749.4 x 1105.7 mm
Remarks	:	This new edition includes: - <ul style="list-style-type: none"> • Cruise Bay • Shell SBM Area • West Keppel Fairway • Southern Fairway • Approaches to Pasir Panjang Reclamation Area • Part of the Singapore Main Strait

This existing chart of the same number published on 19th February 2009 is superseded.

II
NOTICES TO MARINERS AND CHART CORRECTIONS

SP1/GSP1	4Ed 15/01/09 Last NM 96/2009			*NM 103/2009
Insert	Firm line joining		1°14.23'N	103°45.39'E
		and	1°14.27'N	103°45.47'E
	Firm line joining		1°14.25'N	103°45.43'E
		and	1°14.19'N	103°45.43'E
Delete	 Q.4m2M Ular Reef	(HD/HE025/124/2009)	1°14.22'N	103°45.43'E

201	3Ed 5/10/07 Last NM 86/2009	INDON 13 (August 2006)		NM 104/2009
Insert	depth <i>13₁</i>		1°19.45'N	103°12.41'E
Delete	depth <i>17₆</i>		1°19.11'N	103°12.82'E

500	5Ed 30/08/07 Last NM 86/2009	INDON 13 (August 2006)		NM 104/2009
Insert	depth <i>13₁</i>		1°19.45'N	103°12.41'E

III NAVIGATIONAL INFORMATION

*(NM 106/2009) PORT MARINE NOTICES

The following PMNs have been shortlisted, as they would be of particular interest to mariners.

These notices can be accessed directly from MPA website:

http://www.mpa.gov.sg/sites/port_and_shipping/circulars_and_notices/port_marine_notices.page

PMN No.	Subject
135/2009	Construction of Crane Dance Structure, reclamation and installation works in Cruise Bay.
137/2009	Construction of International Cruise Terminal at Marina South.
143/2009	Kusu Pilgrimage Season (18th October 2009 to 16th November 2009).
144/2009	Reclamation at Pasir Panjang Terminal and Pasir Panjang Wharves.
149/2009	Underwater drilling and blasting works at Pasir Panjang Fairway.

*(NM 107/2009) SUBMARINE CABLE REPAIR WORK – SINGAPORE STRAIT

Remark : Repair of VSNL Intra-Asia Segment 1 submarine cable operation.

Date : With effect from 6th October 09 to 8th November 09.

- Cable repairs are in progress within the working area bounded by the following positions (WGS84).

1°16-98'N	104°06-87'E to
1°16-74'N	104°07-94'E to
1°17-20'N	104°10-99'E
- Charts affected : 202, 502 and 503
- Mariners are advised
 - to navigate with caution
 - not to anchor or trawl in the vicinity of the cable route

Source : HD/DB67/010/2009

*(NM 108/2009) SINGAPOREAN PRINT-ON-DEMAND (POD) CHARTS

Print-On-Demand (POD) Charts are the most up-to-date paper nautical charts printed for navigational use. These nautical charts are produced in accordance with the International Hydrographic Organisation (IHO) charting specifications. These official nautical charts are continually updated to the latest Notices to Mariners before they are printed and sold to users.

These POD Charts include 200, 201, 202, 500, 501, 502, 503.

III NAVIGATIONAL INFORMATION

BENEFITS TO OUR CUSTOMERS

Convenience

Customers need not make numerous hand corrections to the nautical charts before use. In addition the updated POD Charts are more accurate and reliable than offset printed charts with hand corrections.

Clarity

Clarity in the presentation of updated information as compared to lithographic printed charts, where in some cases there are several overlapping corrections over existing information.

Coverage

The POD Charts cover the Malacca and Singapore Straits, from One Fathom Bank to Horsburgh Lighthouse.

III
AMENDMENTS TO PUBLICATIONS

***(NM 109/2009) UPDATING OF PUBLICATION “SINGAPORE PORT INFORMATION 2008/2009 EDITION”**

1. Page 139 – Item 7

PASIR PANJANG TERMINAL (PSA Corporation Ltd) (1°17.2'N, 103°46.1'E)

Insert the following :

Berth	Length of Berth	Depth Alongside (Year Surveyed)	Controlling Depth In Approaches
P16	326m	16.0m(2009)	-
P17	326m	16.0m(2009)	-

Source : HD/HY Code C00107709 and C00107809

2. Page 144 – Item 17

JURONG – TG. SAKUNYIT & JURONG ISLAND (EXXONMOBIL ASIA PACIFIC PTE LTD) (1°17.9'N, 103°41.3'E)

Insert the following :

Berth	Depth Alongside (Year Surveyed)	
	Delete	Insert
6	7.6m(2005)	9.0m(2009)

Source : HD/HY Code H00101809

3. Page 147

PULAU ULAR (SHELL REFINERY) (1°13.6'N, 103°45.4'E)

Insert the following :

Berth	Length of Berth	Depth Alongside (Year Surveyed)	Controlling Depth In Approaches
13	168.5m	11.2m(2009)	-

Source : HD/HY Code F00108309

IV
REPRINT OF RADIO NAVIGATIONAL WARNINGS

TT173

VLSL IN EAST JOHOR STRAIT ARE ADVISED TO NAVIGATE WITH CAUTION WHEN NEAR THE PROJECT AREAS OFF PU.TEKONG, PU.SERANGOON, CHANGI AND MALANG PAPAN AS SHALLOW WATER AREAS EXIST. VLSL ARE ADVISED TO KEEP LOOKOUT FOR TUGS AND BARGES NAVIGATING NEAR THE PROJECT AREAS AND PASSENGER FERRIES CROSSING BETWEEN CHANGI AND PULAU TEKONG AND VICINITY OF PASIR GUDANG.

TT611

A SHIP REPORTED LOSING HER PORT ANCHOR AND 12 SHACKLES OF ANCHOR CHAIN, IN APROX POSN 01°11.55'N 103°52.52'E, OFF BATU BERHENTI BEACON.

TT619

DREDGER QUEEN OF PENTA OCEAN IS CONDUCTING DREDGING OPERATIONS IN POSITIONS BOUNDED BY COORDINATES:

01°15.827' N 103°57.737' E

01°14.865' N 103°58.134' E

01°13.298' N 103°54.401' E

01°13.884' N 103°54.131' E

VESSELS ARE ADVISED TO PROCEED AT SAFE SPEED AND TO GIVE A WIDE BERTH.

TT753

A SMALL WOODEN CARGO BOAT 10M IN LENGTH SUNK AT 01°15.73'N 103°32.1'E.

TT811

VISIBILITY IN THE SINGAPORE STRAIT AND PORT WATERS IS REDUCED BY HAZE. ALL VLSL ARE ADVISED TO NAVIGATE WITH CAUTION.

TT833 (AMENDED ON 250100HRS)

CABLESHIP "TYCOM RELIANCE" IS CARRY OUT CABLE REPAIR OPERATIONS IN BETWEEN THE TWO CORDINATES :

(A) LAT 01°17.10'N LONG 104°10.50'E

(B) LAT 01°17.10'N LONG 104°11.20'E

VESSEL PRESENT POSN IS AT LAT 01°17.10'N LONG 104°10.83'E

ALL VESSELS APPROACHING VICINITY ARE REQUESTED TO GIVE HER A WIDE BERTH, PROCEED AT SAVE SPEED AND NAVIGATE WITH CAUTION.

TT838

RACON DELTA Q(6)FL.15SECS AT POSN 01°03.59'N 103°38.86'E IS UNLIT.

TT840

ISOLATED DANGER BUOY BUFFALO ROCK FL(2)5S AT POSN 01°09.90'N 103°48.15'E IS REPORTED UNLIT.

SR123

SEA ROBBERIES REPORTED IN THE SINGAPORE STRAIT, MARINERS ARE ADVISED TO TAKE PRECAUTIONS AND INCREASE LOOK-OUT FOR SUSPICIOUS SMALL FAST MOVING CRAFT APPROACHING THEIR VESSELS. MARINERS ARE TO MAINTAIN ANTI-PIRACY WATCH WHEN PASSING THROUGH THE AREA.

ISSUED BY SINGAPORE PORT OPERATIONS CONTROL CENTRE
(as at 25th October 2009)

V
**REPRINT OF ADMIRALTY NOTICES TO MARINERS
 FOR DUAL BADGED CHARTS**

These notices can be accessed directly from UKHO Website:

<http://www.ukho.gov.uk/ProductsandServices/MaritimeSafety/Pages/NMPublic.aspx>

5330* SINGAPORE – Keppel Harbour to East Keppel Fairway and Pulau Senang Westwards and Southwards – Buoy. Dredged depth. Depths. Lights. Legend. Wreck.

Light List Vol. F, 2009/10, 1726.4, 1726.2

Source: Maritime and Port Authority of Singapore

Chart 4036 [*previous update 4211/09*] WGS84 DATUM

Delete  *Fl.Y.2s Satumu* 1° 09'.426N., 103° 44'.412E.

Chart 4037 [*previous update 4507/09*] WGS84 DATUM

Amend dredged depth to, *12.1m (2009)*, centred on: 1° 15'.431N., 103° 50'.499E.

Substitute depth *10₂* for depth *10₇* 1° 14'.683N., 103° 52'.638E.

Chart 4039 [*previous update New Edition 23/07/2009*] WGS84 DATUM

Insert depth *15₈* 1° 09'.90N., 103° 42'.85E.

Delete  *Fl.Y.2s Satumu* 1° 09'.43N., 103° 44'.41E.

Chart 4040 [*previous update New Edition 23/07/2009*] WGS84 DATUM

Insert depth *15₈* 1° 09'.90N., 103° 42'.85E.

Delete  *Fl.Y.2s Satumu* 1° 09'.43N., 103° 44'.41E.

Chart 4041 [*previous update 4507/09*] WGS84 DATUM

Insert **★ Fl.Y.6s** 1° 16'.83N., 103° 52'.30E.
 1° 16'.92N., 103° 52'.42E.
 legend, (**14x Lts sync**), orientated SW/NE, centred on: 1° 16'.89N., 103° 52'.34E.

Substitute  *Wk* for  *Wk* 1° 14'.68N., 103° 52'.64E.

5770* SINGAPORE – Marina East – Lights.

Light List Vol. F, 2009/10, 1726.2, 1726.4

Source: UKHO

Note: *Certain copies only*

Chart 4041 [*previous update 5330/09*] WGS84 DATUM

Amend light to, Fl.Y.6s 1° 16'.83N., 103° 52'.30E.
 1° 16'.92N., 103° 52'.42E.

SINGAPORE ELECTRONIC NAVIGATIONAL CHARTS (ENC) DISTRIBUTORS
Please approach any of the appointed distributors to purchase the Singapore ENC.

CONTACT PERSON	ADDRESS	TELEPHONE/FAX NO./EMAIL/WEBSITE
Mr Chong Chee Meng	DPM (Singapore) Pte Ltd 1 Maritime Square, #09-72 Harbour Front Centre, Singapore 099253	Tel. No.: +65 6270 4060 Fax No.: +65 6276 3858 Email: sales@dpsingapore.com.sg Website: http://www.dpsingapore.com.sg
Mr Hamzah Akhbar	Kelvin Hughes(S) Pte Ltd 8 Pandan Avenue #02-00, Singapore 609384	Tel. No.: +65 6545 9880 ext.24 Fax No.: +65 6545 8892 Email: hamzah.akhbar@khsing.com Website: http://www.kelvinhughes.co.uk
Mr Looi Keen Wai	Maritime Information Systems (MARIS) 52, Telok Blangah Road #01-06, Telok Blangah Centre, Singapore 058809	Tel. No.: +65 6276 1472 Fax No.: +65 6276 1473 Email: support@maris.sg Website: http://www.maris.no
Ms Kathrine Bjaroy	Maritime Information System AS (MARIS) Danholmen 25, 3128 Notteroy, Norway	Tel. No.: +47 33 30 42 50 Fax No.: +47 33 30 42 51 Email: roar.moe@maris.no Website: http://www.maris.no
Mr Dave Chow En Wai	Motion Smith 15 Jalan Kilang Barat #08-01/05 Frontech Centre Singapore 159357	Tel. No.: +65 6220 5098 Fax No.: +65 6225 4902 Email: sales@motsmith.com Website: http://www.motsmith.com
Mr Dominic Oliver	Transas Marine Pacific Pte Ltd 750C Chai Chee Road, #04-07, Technopark@Chai Chee, Singapore 469003	Tel. No.: +65 6443 3061 Fax No.: +65 6443 3025 Email: dominic@transas.com.sg Website: http://www.transas.com.sg
Mr Choy Kum Weng	Vector Services Pte Ltd 15 West Coast Highway, #02-14A Pasir Panjang Building Singapore 117861	Tel. No.: +65 6777 3602 Fax No.: +65 6777 9203 Email: kwchoy@pacific.net.sg
Mr George Arts	Marine Press of Canada 640 Rue St-Paul Ouest, Suite 300 Montreal (QC) Canada, H3C1L9	Tel. No.: (514) 866 8342 Fax No.: (514) 866 9050 Email : sales@marinepress.com Website: http://www.marinepress.com
Mr Thomas Wilde	HanseNautic GmbH Bade & Hornig, Eckardt & Messtorff Herrengaben 31 D-20459 Hamburg, Germany	Tel. No.: +49 40 374 811-32 Fax No.: +49 40 366 400 Email: wilde@hansenautic.de Website : http://www.HanseNautic.com
Ms Verena Borsos	SevenCs AG + Co. KG Ruhrstrasse 90, D-22761 Hamburg, Germany	Tel. No.: +49 40 853 58 6940 Fax No.: +49 40 853 58 6949 Email: sales@chartworld.com Website : http://www.sevencs.com
Mr Keiji Shimizu	Japan Hydrographic Association Electronic Charts Division Daiichi Sogo Bldg, 6F 1-6-6, Hanedakuko, Ota-ku, Tokyo 144-0041, Japan	Tel. No.: +81 3 5708 7093 Fax No.: +81 3 5708 7094 Email: enc-support@jha.jp Website: http://www.jha.jp

SINGAPORE ELECTRONIC NAVIGATIONAL CHARTS (ENC) DISTRIBUTORS
Please approach any of the appointed distributors to purchase the Singapore ENC.

CONTACT PERSON	ADDRESS	TELEPHONE/FAX NO./EMAIL/WEBSITE
Mr Jester-Kim	E_MLX Co. Ltd Ssangyong Research No.2 Lab Sinseong-Dong 100 Yusong-Gu, Daejoen 305-804, Korea (ROK)	Tel. No.: +82 42 865 1893 Fax No.: +82 42 865 1884 Email: Jester-kim@emlx.co.kr
Mr C G Kim	Korean Ocean Development Co. Ltd 2ND Fl, Dongbang Bldg, 25-4, 4 Ga Jungang-Dong, Jung-Gu, Busan, South Korea	Tel. No.: +82 514 66 0760 Fax No.: +82 514 65 9345 Email: sales@chartkorea.com Website: http://www.chartkorea.com
Mr Kjell Nodland	Jeppesen Norway A/S P.O Box 212 , N-4379 Egersund, Norway	Tel No.: +47 514 64 700 Fax No: +47 514 64 701 Email: enc@c-map.no Website : http://www.c-map.no
Ms Eva Hegland	PRIMAR STAVANGER Lervigsveien 36, P.O Box 60, N-4001 Stavanger, Norway	Tel. No.: +47 51 93 9500 Fax No.: +47 51 93 9501 Email: sales@primar.org Website : http://www.primar-stavanger.org
Mrs Christine Trickett	United Kingdom Hydrographic Office Admiralty Way, Taunton, Somerset TA1 2DN United Kingdom	Tel. No.: +44 (0)1823 337900 Fax No.: +44 (0)1823 284077 Emails: vargroup@ukho.gov.uk & christine.trickett@ukho.gov.uk Website: http://www.ukho.gov.uk

**Agents for the Maritime and Port Authority of Singapore
Nautical Charts and Publications**

Agent's name : **DPM (Singapore) Pte Ltd**
Address : 1 Maritime Square #09-72, HarbourFront Centre,
Singapore 099253
Telephone : (65) 6270 4060
Fax No. : (65) 6276 3858
E-mail : sales@dpmsingapore.com.sg
Internet Web Site : http://www.dpmsingapore.com.sg

Agent's name : **E.W. Liner Charts & Publications Pte Ltd**
Address : 102F, Pasir Panjang Road, #08-01, Citilink Warehouse Complex,
Singapore 118530
Telephone : (65) 6323 0773
Fax No. : (65) 6323 0775
E-mail : ewliner@singnet.com.sg
Internet Web Site : http://www.ewliner.com

Agent's name : **Motion Smith**
Address : 15 Jalan Kilang Barat
#08-01/05 Frontech Centre,
Singapore 159357
Telephone : (65) 6220 5098
: (After office hours: 8163 9993)
Fax No. : (65) 6225 4902
E-mail : sales@motsmith.com
Internet Web Site : http://www.motsmith.com

HYDROGRAPHIC NOTE - Instructions

1. Mariners are requested to notify the Chief Hydrographer, Maritime and Port Authority of Singapore, when new or suspected dangers to navigation are discovered, changes are observed in aids to navigation or where corrections to nautical publications may be necessary. Reports, which cannot be confirmed or are lacking in certain details should not be withheld.
2. Any ambiguities of time, positioning and depth should be stressed and any firm expectation of being able to check the information provided on a following voyage should be mentioned.
3. Mariners using satellite position fixing systems, eg. GPS, should provide details of equipment and datum used (where applicable). Where bearings (true or magnetic) are taken visually or by radar to fix a position, it should include more than two objects in order to provide a check on its accuracy. A position may also be defined by bearing and distance from a conspicuous object eg. beacon, lighthouse etc.
4. The note should include a tracing or a digital image of the chart used and the details should be clearly marked.
5. Echo sounders frequently register greater depths than the advertised maximum depth for the equipment, eg. a trace appearing at 50 metres may be in fact be 550 metres or even 1050 metres for equipment whose maximum depth is 500 metres. Erroneous depths caused by 2nd transmission error can usually be recognised by the following:
 - (a) the tracing being weaker than normal for the depth registered,
 - (b) the trace appearing to pass through the transmission line,
 - (c) the feathery nature of the trace.
6. An acknowledgement of receipt will be sent. When a Notice to Mariners is issued, the sender's vessel or name is quoted as the source unless the same information is also received in foreign Notices to Mariners.
7. Reports of shoals, uncharted dangers and defects in aids to navigation may also be made to the appropriate Singapore Port Operations Control Centre on VHF Channels 10, 12, 14, 68 or 73.

HYDROGRAPHIC NOTE

To:

Chief Hydrographer
Hydrographic Department
Maritime and Port Authority of Singapore
460 Alexandra Road PSA Building #20-00
Singapore 119963

Tel : (65) 6375 1227
Fax : (65) 6278 7646
Email : hydrographic@mpa.gov.sg

Sender's Contact Details :

Date :

Name of Vessel :

Address of Sender :

Tel : Fax :

Email :

Nature of Observation :

General Location :

Subject :

Position : Lat. Long.

Charts Used :

Date & Time of Observation :

Details :

.....

.....

Attachment :

Equipment Used :

Type of Position Fixing : GPS / DGPS Others :

Type of Echo Sounder :

Name and Signature :

Ship's/Company's stamp :