



## SINGAPOREAN NOTICES TO MARINERS

SECTION	CONTENT	Page
I	Index of Charts & Publications	209
II	New Publications	212
	Notices to Mariners and Chart Corrections	215
	Temporary and Preliminary Notices	216
III	Navigational Information	218
	Amendments to Publications	219
IV	Reprint of Radio Navigational Warnings	220
V	Reprint of Admiralty Notices to Mariners for Dual Badged Charts	221

The monthly Notices to Mariners contain corrective information affecting charts published by the Hydrographic Department, Maritime and Port Authority of Singapore. The information contained in these Notices should be updated on the charts affected. Notices under Section II apply only to the particular Singaporean Chart(s) indicated.

Mariners are requested to notify the Chief Hydrographer, Maritime and Port Authority of Singapore, immediately on the discovery of new dangers or suspected dangers to navigation and of changes or defects in aids to navigation. See Hydrographic Note on back page.

The monthly Singaporean Notices to Mariners can be accessed directly from the MPA website:  
[http://www.mpa.gov.sg/sites/port\\_and\\_shipping/circulars\\_and\\_notices/singapore\\_notices\\_to\\_mariners\(ntm\).page](http://www.mpa.gov.sg/sites/port_and_shipping/circulars_and_notices/singapore_notices_to_mariners(ntm).page)

This service is offered free of charge.

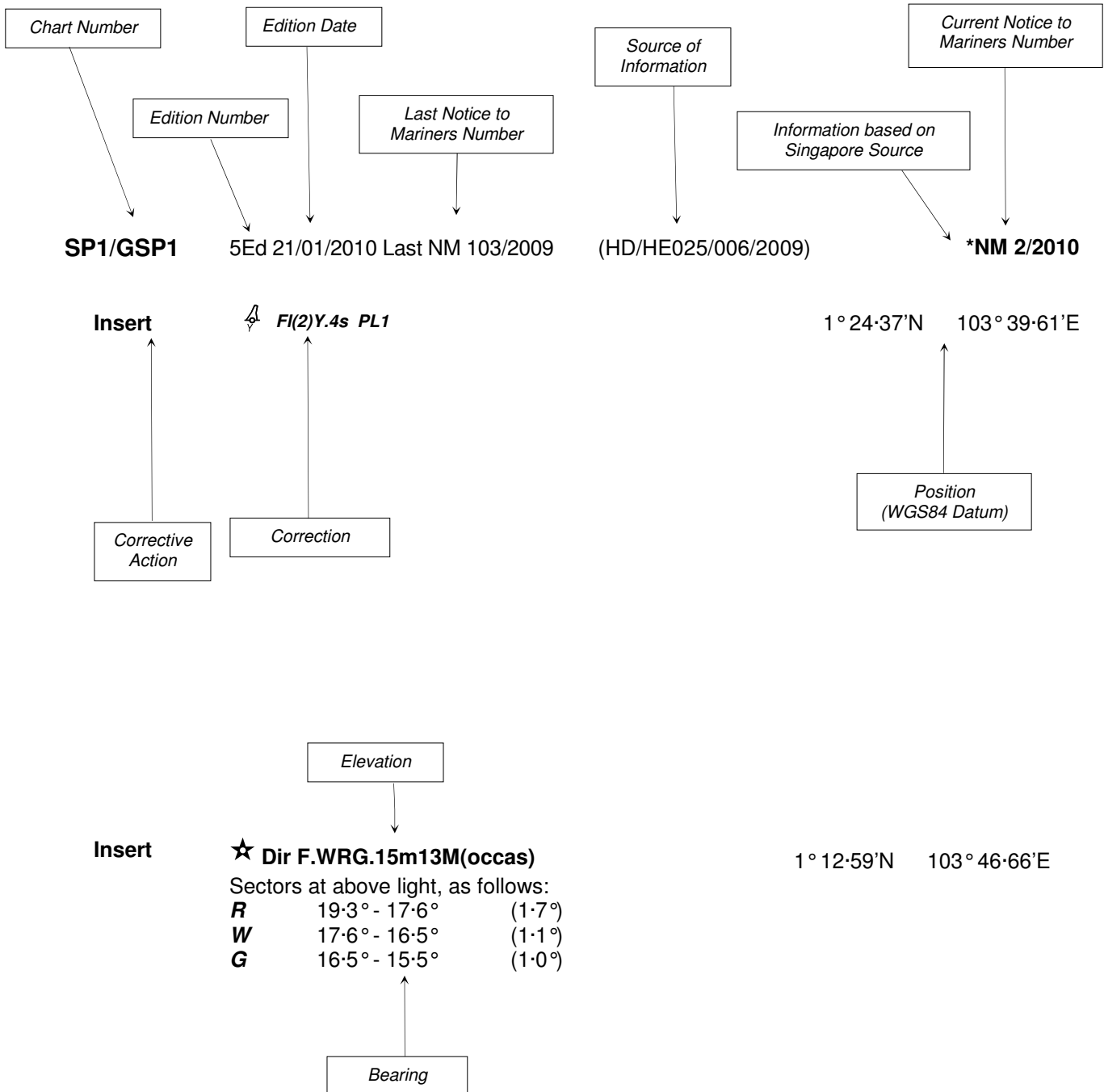
The Chief Hydrographer of  
 Maritime and Port Authority of Singapore  
 wishes all users of Singaporean and Dual Badged  
 Charts

**“A HAPPY DEEPAVALI”  
 and  
 “SELAMAT HARI RAYA AIDILADHA”**

Hydrographic Department  
 Maritime and Port Authority of Singapore  
 460 Alexandra Road  
 PSA Building #20-00  
 Singapore 119963  
 Tel: (65) 6375 1227  
 Fax: (65) 6278 7646

## EXPLANATION OF FORMAT

The elements of a typical chart correction are explained below.



**Notes:**

- a) Notice to Mariners number followed by:  
**T** indicates a Temporary Notice (eg. **\*NM 1T/2010**).  
**P** indicates a Preliminary Notice (eg. **\*NM 3P/2010**).
- b) Bearings are true reckoned clockwise from 000° to 359° ; those relating to lights are from seaward.
- c) Heights and elevations are above Mean High Water Springs.

I  
INDEX OF CHARTS AND PUBLICATIONS

INDEX OF AFFECTED CHARTS

DESCRIPTION	NOTICE NO.	PAGE NO.
Index of Singaporean Charts	-	209
Index of Dual Badged Charts	-	210
Index of Singapore Electronic Navigational Chart (ENC)	-	211
New Publication "SINGAPORE TIDE TABLES YEAR 2011"	-	212
New Edition Dual Badged Charts	-	213
New Edition Singaporean Charts	-	214
Singaporean Chart SP1/GSP1	*96, *97	215
Singaporean Chart 501	*96, *98	215
Singaporean Chart 502	*98	215
Temporary and Preliminary Notices	*99T	216
Port Marine Notices	*100	217
Singaporean Print-On-Demand (POD) Charts	*101	217
54 <sup>th</sup> UNB-OMG / UNH-CCOM Multibeam Sonar Training Course, Singapore	*102	218
Amendments to Publications	*103	219
Reprint of Radio Navigational Warnings	-	220
Reprint of Admiralty Notices to Mariners for Dual Badged Charts	-	221 to 224
Singapore Electronic Navigational Chart (ENC) Distributors	-	225
Agents for the Maritime and Port Authority of Singapore Nautical Charts and Publications	-	226

\*Denotes information are based on Singaporean source.

I  
INDEX OF CHARTS AND PUBLICATIONS

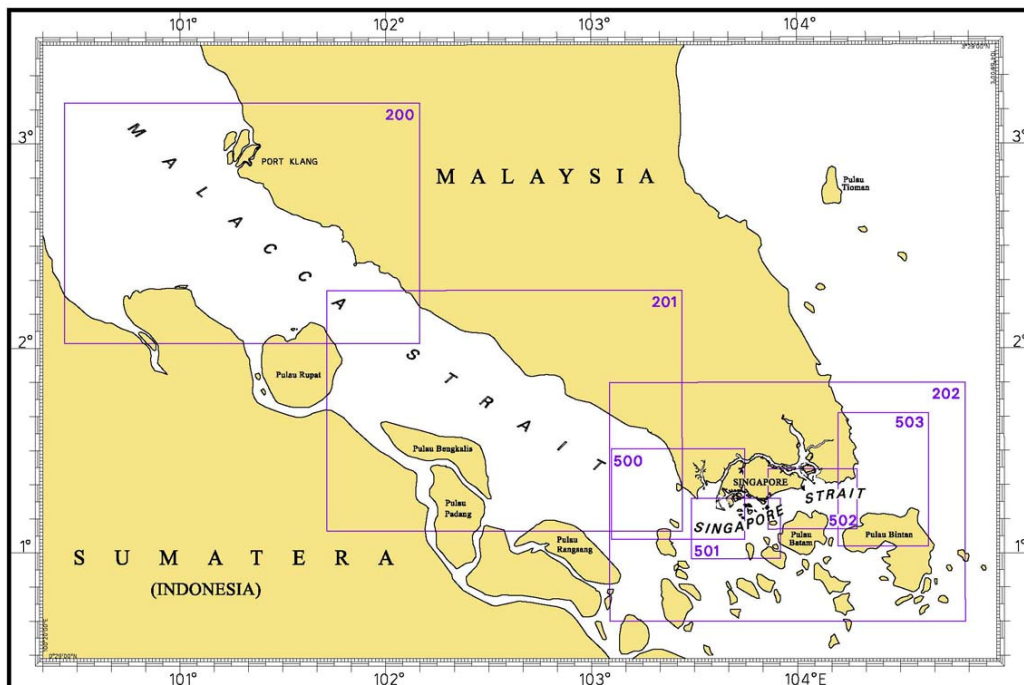
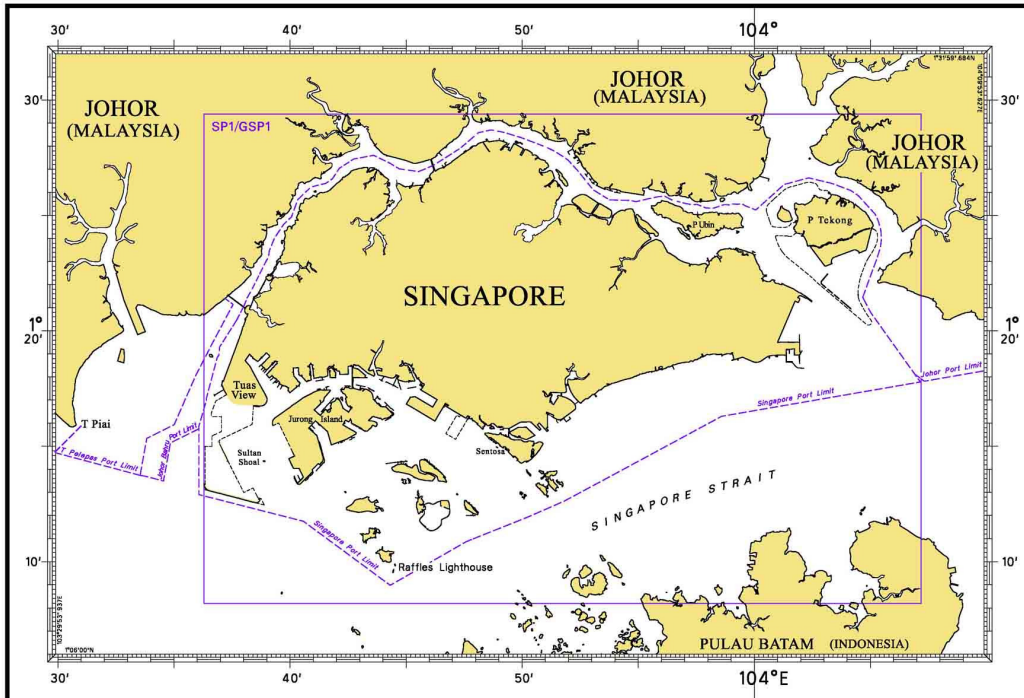
INDEX OF NOTICES

NOTICE NO.	DESCRIPTION	PAGE NO.
-	Index of Singaporean Charts	209
-	Index of Dual Badged Charts	210
-	Index of Singapore Electronic Navigational Chart (ENC)	211
-	New Publication "SINGAPORE TIDE TABLES YEAR 2011"	212
-	New Edition Dual Badged Charts	213
-	New Edition Singaporean Charts	214
*96, *97	Singaporean Chart SP1/GSP1	215
*96, *98	Singaporean Chart 501	215
*98	Singaporean Chart 502	215
*99T	Temporary and Preliminary Notices	216
*100	Port Marine Notices	217
*101	Singaporean Print-On-Demand (POD) Charts	217
*102	54 <sup>th</sup> UNB-OMG / UNH-CCOM Multibeam Sonar Training Course, Singapore	218
*103	Amendments to Publications	219
-	Reprint of Radio Navigational Warnings	220
-	Reprint of Admiralty Notices to Mariners for Dual Badged Charts	221 to 224
-	Singapore Electronic Navigational (ENC) Distributors	225
-	Agents for the Maritime and Port Authority of Singapore Charts and Publications	226

\* Denotes information are based on Singaporean source.

# I INDEX OF CHARTS AND PUBLICATIONS

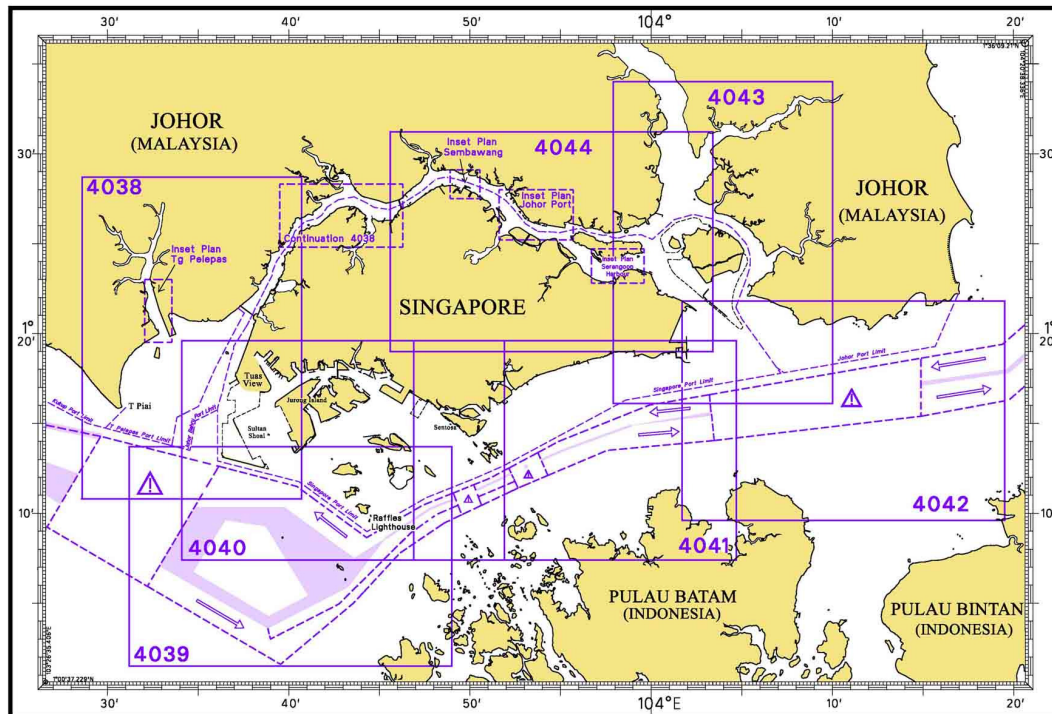
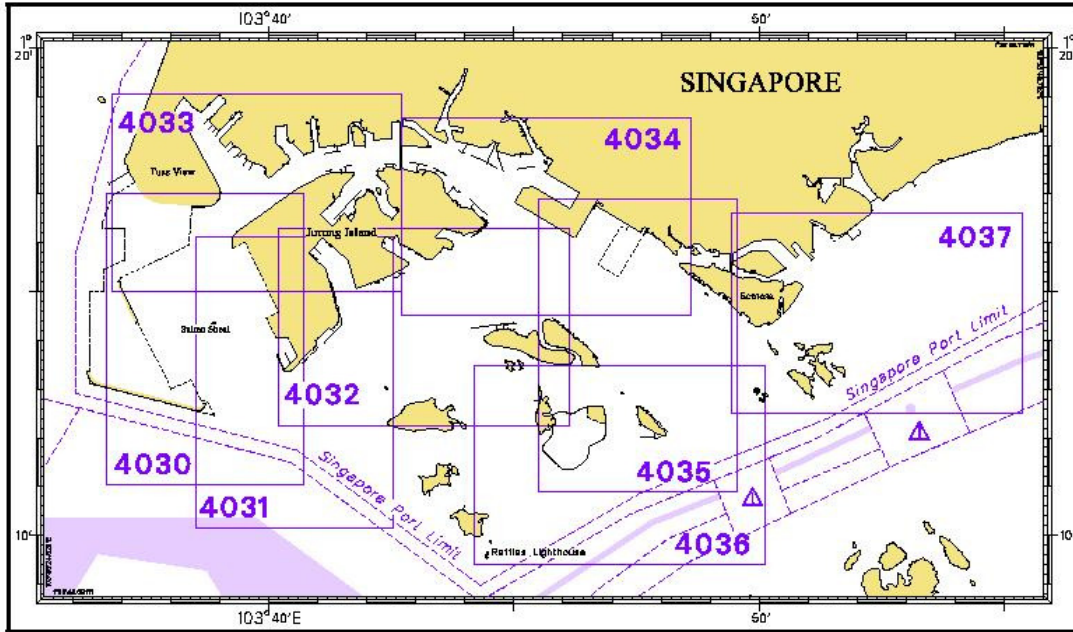
## INDEX OF SINGAPOREAN CHARTS



Notes:  
 Updated SINGAPOREAN Charts are available through our Print-On-Demand (POD) Chart Service. For more information, refer to Section III – Navigational Information and these charts can be purchased from our authorised Chart Agents:  
 DPM (Singapore) Pte Ltd, E.W. Liner Charts & Publications Pte Ltd and Motion Smith.

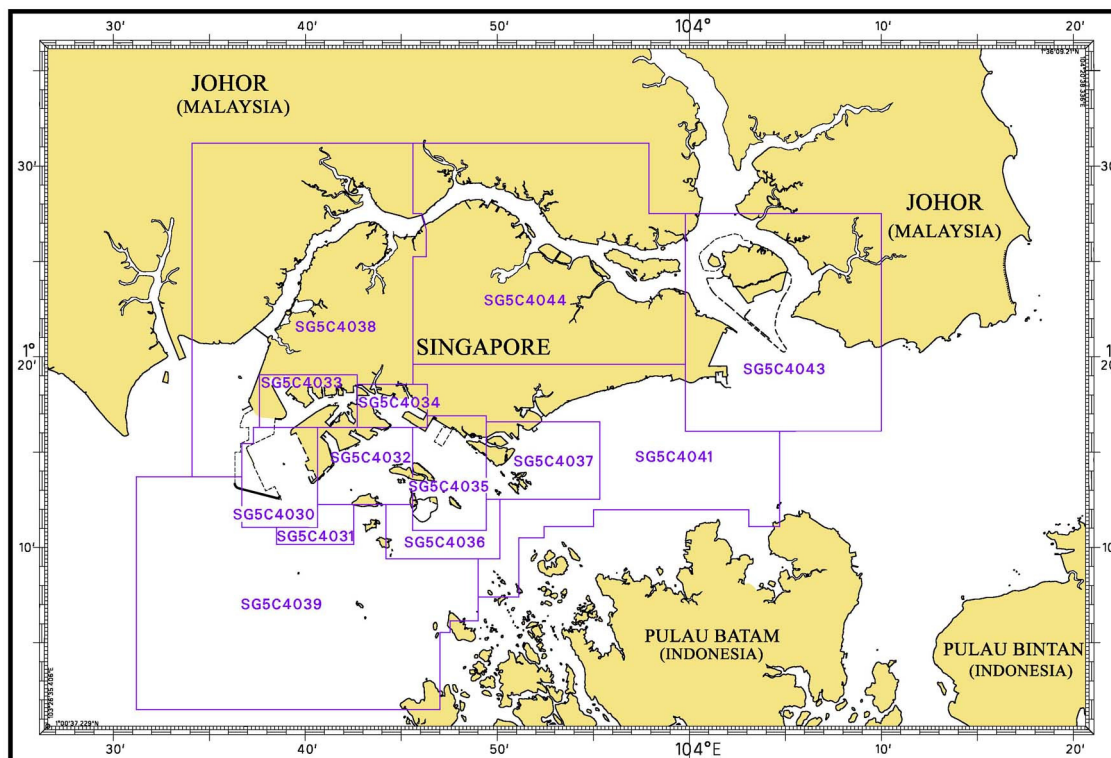
# I INDEX OF CHARTS AND PUBLICATIONS

## INDEX OF DUAL BADGED CHARTS



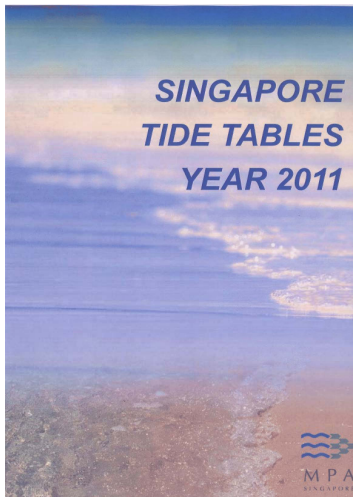
I  
**INDEX OF CHARTS AND PUBLICATIONS**  
**INDEX OF SINGAPORE ELECTRONIC NAVIGATIONAL CHART (ENC)**

**INDEX OF SINGAPORE ENC**



ENC Name	ENC Title	Latitude	Longitude
SG5C4030	West Jurong Anchorages and Temasek Fairway	1°11'050"N 1°16'300"N	103°36'700"E 103°40'640"E
SG5C4031	Western Approaches to Jurong Island	1°10'150"N 1°12'250"N	103°38'500"E 103°42'530"E
SG5C4032	Sinki Fairway	1°12'250"N 1°16'300"N	103°40'640"E 103°45'580"E
SG5C4033	Tuas Bay, West Jurong Channel and Pesek Basin	1°16'300"N 1°19'050"N	103°37'600"E 103°42'700"E
SG5C4034	East Jurong Channel, Pasir Panjang Terminal and West Keppel Fairway	1°16'300"N 1°18'550"N	103°42'700"E 103°46'356"E
SG5C4035	Western Anchorages, Jong Fairway and Cruise Bay	1°10'900"N 1°16'900"N	103°45'580"E 103°49'425"E
SG5C4036	Raffles Lighthouse to The Sisters	1°09'400"N 1°12'520"N	103°44'200"E 103°50'130"E
SG5C4037	Keppel Harbour, Tanjong Pagar Terminal and Approaches	1°12'520"N 1°16'590"N	103°49'425"E 103°55'340"E
SG5C4038	Johor Strait – Western Part	1°13'700"N 1°31'200"N	103°34'100"E 103°46'300"E
SG5C4039	Western Approaches to Main Strait	1°01'500"N 1°13'700"N	103°31'200"E 103°49'000"E
SG5C4041	Pulau Sebarok to Changi	1°07'400"N 1°19'600"N	103°45'600"E 104°04'700"E
SG5C4043	Kuala Johor and Sungai Johor	1°16'100"N 1°27'500"N	103°59'800"E 104°10'000"E
SG5C4044	Johor Strait – Eastern Part	1°19'600"N 1°31'200"N	103°45'600"E 103°59'800"E

## II NEW PUBLICATIONS



### SINGAPORE TIDE TABLES YEAR 2011

#### Summary of Publication

- (a) This 239-page book contains Tidal Height and Tidal Stream Predictions covering stations in Singapore Port waters and selected stations along the Malacca and Singapore Straits.

The predictions consist of 5 main segments to facilitate easy reference:

- High and Low Water Predictions
  - Hourly Tidal Height Predictions
  - Hourly Tidal Stream Predictions
  - Maximum and Slack Tidal Stream Predictions
  - Malacca Strait – High and Low Water Predictions
- (b) The presentation of the predictions is enhanced with colour codes so as to differentiate the various states of tidal heights, eg falling or rising tide and tidal stream directions. Moon phases, eg full and new moon, are also included in each calendar month to complement the prediction values.
- (c) The tidal heights are given in metres above Chart Datum (CD). The CD is the datum of soundings shown on the Singaporean Charts and Dual Badged Charts covering the area. A table showing the various tidal levels eg. Mean High Water Springs, Mean Low Water Springs etc, at various stations with reference to CD is also included in this publication.

#### To Whom Will It Be Useful?

Mariners, shipping community, port users and other interested users.

#### Frequency of Publication

Annually.

#### Cost of Publication

To be advised by Chart Agents.

#### Order Enquires:

This publication is available from the following Chart Agents:

- 1) DPM (Singapore) Pte Ltd
- 2) E.W. Liner Charts & Publications Pte Ltd
- 3) Motion Smith

(Please refer to Page 226 for details.)

---

## II NEW PUBLICATIONS

### NEW EDITION DUAL BADGED CHARTS PUBLISHED ON 30<sup>TH</sup> SEPTEMBER 2010

<b>Chart Number</b>	:	4034
<b>Title</b>	:	Port of Singapore – East Jurong Channel, Pasir Panjang Terminal and West Keppel Fairway
<b>Coverage</b>	:	Lat 01°14.50'N 01°18.55'N Long 103°42.70'E 103°48.60'E
<b>Scale</b>	:	1: 10 000
<b>Date Published</b>	:	30 <sup>th</sup> September 2010
<b>Size of Chart</b>	:	1094.3 X 746.3 mm
<b>Remarks</b>	:	This new edition includes updated surveys covering these areas : <ul style="list-style-type: none"> <li>• Pasir Panjang Basin</li> <li>• Off Pasir Panjang Ferry Terminal</li> <li>• Tanjong Penjuru – Vopak Terminal Jetty</li> <li>• Jurong Island (Pulau Seraya) – Oiltanking Singapore Ltd</li> <li>• Portion of Sungei Pandan</li> </ul>

The existing chart of the same number published on 8<sup>th</sup> April 2010 is superseded.

<b>Chart Number</b>	:	4035
<b>Title</b>	:	Port of Singapore – Western Anchorage, Jong Fairway and Cruise Bay
<b>Coverage</b>	:	Lat 01°10.90'N 01°16.90'N Long 103°45.50'E 103°49.54'E
<b>Scale</b>	:	1: 10 000
<b>Date Published</b>	:	30 <sup>th</sup> September 2010
<b>Size of Chart</b>	:	749.4 X 1105.7 mm
<b>Remarks</b>	:	This new edition includes updated surveys covering these areas : <ul style="list-style-type: none"> <li>• Off Pasir Panjang Ferry Terminal</li> <li>• West of Pulau Sebarok</li> <li>• Shell SBM Area</li> <li>• South of Semakau Dumping Ground</li> <li>• West of Brani Causeway</li> </ul>

The existing chart of the same number published on 8<sup>th</sup> April 2010 is superseded.

## II NEW PUBLICATIONS

### NEW EDITION SINGAPOREAN CHART PUBLISHED ON 7<sup>TH</sup> OCTOBER 2010

**Chart Number** : 201  
**Title** : Malacca Strait  
 – Tanjung Keling To Western Entrance Of Singapore Strait  
**Coverage** : Lat 1° 06.43' N 02° 16.99' N  
 Long 101° 42.91' E 103° 26.45' E  
**Scale** : 1 : 200 000  
**Date Published** : 7<sup>th</sup> October 2010  
**Size of chart** : 960.0 x 650.0 mm  
**Remarks** : This new edition includes new submarine cables and updated bathymetry.

The existing chart of the same number published on 5<sup>th</sup> October 2007 is superseded.

**Chart Number** : 500  
**Title** : Malacca and Singapore Straits  
 Pulau Pisang To Raffles Lighthouse  
**Coverage** : Lat 1° 04.05' N 01° 30.50' N  
 Long 103° 05.80' E 103° 44.61' E  
**Scale** : 1 : 75 000  
**Date Published** : 7<sup>th</sup> October 2010  
**Size of chart** : 959.8 x 649.9 mm  
**Remarks** : This new edition includes updated coastlines of Jurong Island, new submarine cables and as laid positions of the Natuna pipelines with the 500m corridor bathymetry.

The existing chart of the same number published on 30<sup>th</sup> August 2007 is superseded.

---

**II**  
**NOTICES TO MARINERS AND CHART CORRECTIONS**

<b>SP1/GSP1</b>	5Ed 21/01/10 Last NM 88/2010	(Port Marine Notice No. 131/2010)	<b>* NM 96/2010</b>
<b>Insert</b>	dashed line working limit joining:		1°16-02'N 103°47-77'E 1°15-96'N 103°47-88'E 1°15-79'N 103°47-86'E 1°15-67'N 103°47-79'E 1°15-69'N 103°47-75'E 1°16-02'N 103°47-77'E
	legend " <b>Works in progress (2010)</b> "		1°15-88'N 103°47-82'E
		(HD/HE025/99/2010)	<b>* NM 97/2010</b>
<b>Move</b>	★ <b>FL.Y</b> from: to:		1°16-70'N 103°38-77'E 1°16-73'N 103°38-85'E
<b>Insert</b>	extend firm line joining from: to:		1°16-70'N 103°38-77'E 1°16-73'N 103°38-85'E

<b>501</b>	5Ed 24/09/09 Last NM 36/2010	(Port Marine Notice No. 131/2010)	<b>*NM 96/2010</b>
<b>Insert</b>	dashed line working limit joining:		1°16-00'N 103°47-81'E 1°15-96'N 103°47-88'E 1°15-79'N 103°47-86'E 1°15-67'N 103°47-79'E 1°15-69'N 103°47-75'E 1°16-00'N 103°47-77'E
	legend " <b>Works in progress (2010)</b> "		1°15-88'N 103°47-82'E
		(HD/HY/A00105010)	<b>*NM 98/2010</b>
<b>Insert</b>	depth <b>20<sub>3</sub></b>		1°13-75'N 103°52-26'E
<b>Delete</b>	depth <b>18<sub>8</sub></b> and 20m contour		1°13-67'N 103°52-32'E

<b>502</b>	4Ed 25/09/08 Last NM 90/2010	(HD/HY/A00105010)	<b>*NM 98/2010</b>
<b>Insert</b>	depth <b>20<sub>3</sub></b>		1°13-75'N 103°52-26'E
<b>Delete</b>	depth <b>18<sub>8</sub></b> and 20m contour		1°13-67'N 103°52-32'E

**II**  
**TEMPORARY AND PRELIMINARY NOTICES**

**\*(NM 99T/2010)      REPAIRS AND MAINTENANCE OF OUTER SHOAL BEACON**

- Remark :**
1. Outer Shoal Beacon was removed for repair and maintenance. It is scheduled to be reinstalled at the original location in December after completing the repair and maintenance operations.
  2. The beacon was replaced by a green conical buoy with light character Fl.G.5s. at 1°15.046'N 103°51.811'E.

**Date :**                      With effect from 5<sup>th</sup> October 2010 to 31<sup>st</sup> December 2010.

**Charts affected :**      SP1/GSP1, 501, 502, 4037, 4040 and 4041.

**Source :**      HD/HE025/98/2010

---

### III NAVIGATIONAL INFORMATION

#### \*(NM 100/2010) PORT MARINE NOTICES

The following PMNs have been shortlisted, as they would be of particular interest to mariners.

These notices can be accessed directly from MPA website:

[http://www.mpa.gov.sg/sites/port\\_and\\_shipping/circulars\\_and\\_notices/port\\_marine\\_notices.page](http://www.mpa.gov.sg/sites/port_and_shipping/circulars_and_notices/port_marine_notices.page)

PMN No.	Subject
121/2010	Kusu pilgrimage season (8 <sup>th</sup> October to 5 <sup>th</sup> November 2010).
126/2010	Construction of wharf at Tuas View.
127/2010	Construction of Sentosa Boardwalk.
129/2010	Installation of Silt Barricade off Pasir Panjang Ferry Terminal.
131/2010	Reclamation at Pasir Panjang Terminal and Pasir Panjang Wharves.
132/2010	Reclamation work at Tuas View extension.
135/2010	Reduced visibility in the Singapore Strait and Port waters.
136/2010	Dredging works at East Keppel Fairway.
138/2010	Haze alert – 24 Hours PSI Level <100.

#### \*(NM 101/2010) SINGAPOREAN PRINT-ON-DEMAND (POD) CHARTS

Print-On-Demand (POD) Charts are the most up-to-date paper nautical charts printed for navigational use. These nautical charts are produced in accordance with the International Hydrographic Organisation (IHO) charting specifications. These official nautical charts are continually updated to the latest Notices to Mariners before they are printed and sold to users.

These POD Charts include SP1/GSP1, 200, 201, 202, 500, 501, 502 and 503.

#### BENEFITS TO OUR CUSTOMERS

##### **Convenience**

Customers need not make numerous hand corrections to the nautical charts before use. In addition the updated POD Charts are more accurate and reliable than offset printed charts with hand corrections.

##### **Clarity**

Clarity in the presentation of updated information as compared to lithographic printed charts, where in some cases there are several overlapping corrections over existing information.

##### **Coverage**

The POD Charts cover the Malacca and Singapore Straits, from One Fathom Bank to Horsburgh Lighthouse.

**III**  
**NAVIGATIONAL INFORMATION**

\*(NM 102/2010) **54<sup>th</sup> UNIVERSITY OF NEW BRUNSWICK – Ocean Mapping Group / UNIVERSITY OF NEW HAMPSHIRE – Center for Coastal and Ocean Mapping Multibeam Sonar Training Course, Singapore**

**The Course**

This six-day, 36-lecture course is designed to provide a theoretical and practical background in marine swath survey technology and techniques for hydrographic surveys, continental shelf boundary delimitation, offshore engineering, harbour dredging, fisheries habitat, route survey and scientific research, and provides overviews of:

- the technology and problems associated with shallow water multibeam surveys,
- processing and visualization techniques designed to address the complexities of swath mapping,
- constraints on using swath bathymetry to produce highest quality data.

**When**

22<sup>nd</sup> – 27<sup>th</sup> Nov 2010

**Where**

Grand Ballroom 1, Furama City Centre Hotel,  
60 Eu Tong Sen Street, Singapore 059804  
<http://www.furama.com/citycentre/>

For more information:

Please contact Mr Lee Weng Choy at email [wcleee@mpa.gov.sg](mailto:wcleee@mpa.gov.sg)

Tel: +65 6375 1220

Fax: +65 6278 7646 or

Mr Muhammad Nor Azmi Bin Aman at email [Md\\_Nor\\_Azmi\\_Bin\\_Aman@mpa.gov.sg](mailto:Md_Nor_Azmi_Bin_Aman@mpa.gov.sg)

Tel: +65 6375 1543

Fax: +65 6278 7646

or visit our website:

[http://www.mpa.gov.sg/sites/images/pdf\\_capture/mbc54info\\_v7\\_fields\\_distributed.pdf](http://www.mpa.gov.sg/sites/images/pdf_capture/mbc54info_v7_fields_distributed.pdf)

**III**  
**AMENDMENTS TO PUBLICATIONS**

\*(NM 103/2010) UPDATING OF PUBLICATION "SINGAPORE PORT INFORMATION 2010/2011"

1. Page 113

**CHARACTERISTICS OF AIDS TO NAVIGATION  
WEST JOHOR STRAIT**

Name of Beacon/Buoy	Position	
	Lat. N	Long. E
	Delete	Insert
<b>TP2 Beacon (Jetty East End)</b>	01 16.696 103 38.768	<b>01 16.728 103 38.852</b>

Source: HD/HE025/99/2010

2. Page 143 – Item 6

**WHARVES AND BERTHS  
PASIR PANJANG TERMINAL (PSA SINGAPORE TERMINALS) (1°17.2'N, 103°46.1'E)**

Berth	Depth Alongside (Year Surveyed)	
	Delete	Insert
<b>P07</b>	15.0m (2006)	<b>15.0m (2010)</b>
<b>P08</b>	15.0m (2006)	<b>15.0m (2010)</b>

Source: HD/HY/C00106510

---

**IV**  
**REPRINT OF RADIO NAVIGATIONAL WARNINGS**

TT173

VESSELS IN EAST JOHOR STRAIT ARE ADVISED TO NAVIGATE WITH CAUTION WHEN NEAR THE PROJECT AREAS OFF PULAU TEKONG, CHANGI AND MALANG PAPAN AS SHALLOW WATER AREAS EXIST. VESSELS ARE ADVISED TO KEEP LOOKOUT FOR TUGS AND BARGES NAVIGATING NEAR THE PROJECT AREAS AND PASSENGER FERRIES CROSSING BETWEEN CHANGI AND PULAU TEKONG AND VICINITY OF PASIR GUDANG.

TT619

DREDGER QUEEN OF PENTA OCEAN IS CONDUCTING DREDGING OPERATIONS IN POSITIONS BOUNDED BY COORDINATES:

01°15.827' N 103°57.737' E

01°14.865' N 103°58.134' E

01°13.298' N 103°54.401' E

01°13.884' N 103°54.131' E

VESSELS ARE ADVISED TO PROCEED AT SAFE SPEED AND TO GIVE A WIDE BERTH.

TT753

A SMALL WOODEN CARGO BOAT 10M IN LENGTH SUNK AT 01°15.73'N 103°32.10'E.

TT884

SALVAGE OPS UNDERWAY IN 01°13.40'N 103°57.75'E. ALL SHIPS ARE REQUESTED TO GIVE A WIDE BERTH OF AT LEAST 5 CABLES WHEN PASSING THE AREA.

TT886

SAFE WATER MARK LFL.10S(RW) MARKED THE ENTRANCE INTO DWR IS MISSING.

TTT903

PHILLIP CHANNEL TAKONG ISOLATED DANGER BUOY FL(2)5SECS IN POSN 01°05.80'N 103°43.70'E REPORTED TO BE UNLIT.

SR154

THERE WAS A REPORT OF AN UNIDENTIFIED VESSEL SUNK SOUTHWEST OF HORSBURGH AT POSITION 01°16.12'N 104°21.50'E. VESSELS IN THE VICINITY ARE ADVISED TO KEEP A LOOKOUT AND REPORT SIGHTING TO SPOCC.

ISSUED BY SINGAPORE PORT OPERATIONS CONTROL CENTRE (as at 24<sup>th</sup> October 2010)

V  
**REPRINT OF ADMIRALTY NOTICES TO MARINERS  
 FOR DUAL BADGED CHARTS**

These notices can be accessed directly from UKHO Website:

<http://www.ukho.gov.uk/ProductsandServices/MaritimeSafety/Pages/NMPublic.aspx>

**4767 SINGAPORE – East Keppel Fairway, West Jurong Channel, Pulau Busing South-westwards and Pulau Tekong Northwards – Depths. Channel. Restricted area. Buoyage. Beacon.**

Light List Vol. F, 2010/11, 1737.4

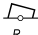
Source: Maritime and Port Authority of Singapore

Note: Charts 4043 and 4044 rock remains.

**Chart 4030** [ *previous update 4183/10* ] WGS84 DATUM

Insert the accompanying block, showing amendments to channel, restricted area and depths, centred on: 1° 16'·790N., 103° 39'·965E.

**Chart 4032** [ *previous update 2726/10* ] WGS84 DATUM

Delete	 <i>Fl.R.2s UF1</i>	1° 13'·980N., 103° 44'·130E.
	 <i>Fl.G.4s UF2</i>	1° 13'·900N., 103° 44'·110E.
	 <i>Fl.G.8s UF3</i>	1° 13'·820N., 103° 44'·370E.
	 <i>Fl.R.4s UF4</i>	1° 13'·846N., 103° 44'·562E.
	 <i>Fl.G.6s UF5</i>	1° 13'·733N., 103° 44'·788E.

**Chart 4033** [ *previous update 4183/10* ] WGS84 DATUM

Insert the accompanying block, showing amendments to channel, restricted area and depths, centred on: 1° 17'·000N., 103° 39'·975E.

**Chart 4037** [ *previous update 3041/10* ] WGS84 DATUM

Insert	depth $\bar{5}_1$	(a)	1° 14'·992N., 103° 51'·920E.
Delete	depth $\bar{5}_4$ , adjacent to:		(a) above

**Chart 4041** [ *previous update 4182/10* ] WGS84 DATUM

Substitute	depth $\bar{5}_1$ for depth $\bar{5}_4$	(a)	1° 14'·99N., 103° 51'·92E.
------------	---	-----	----------------------------

**Chart 4043** [ *previous update New Edition 29/07/2010* ] WGS84 DATUM

Insert	 <i>Fl(2)R.5s Neville Rock</i>	1° 26'·65N., 104° 02'·74E.
Delete	 <i>Fl(2)R.5s8m5M</i>	1° 26'·65N., 104° 02'·63E.

**Chart 4044** [ *previous update New Edition 29/07/2010* ] WGS84 DATUM

Insert	 <i>Fl(2)R.5s Neville Rock</i>	1° 26'·65N., 104° 02'·74E.
Delete	 <i>Fl(2)R.5s8m5M</i>	1° 26'·65N., 104° 02'·63E.

V  
**REPRINT OF ADMIRALTY NOTICES TO MARINERS  
FOR DUAL BADGED CHARTS**

**4785\* MALAYSIA – Peninsular Malaysia, West Coast – Johor – West Reach – Buoy.**

Source: Maritime and Port Authority of Singapore and Malaysian Notice 68/10

**Chart 4038** [ *previous update New Edition 05/08/2010* ] WGS84 DATUM

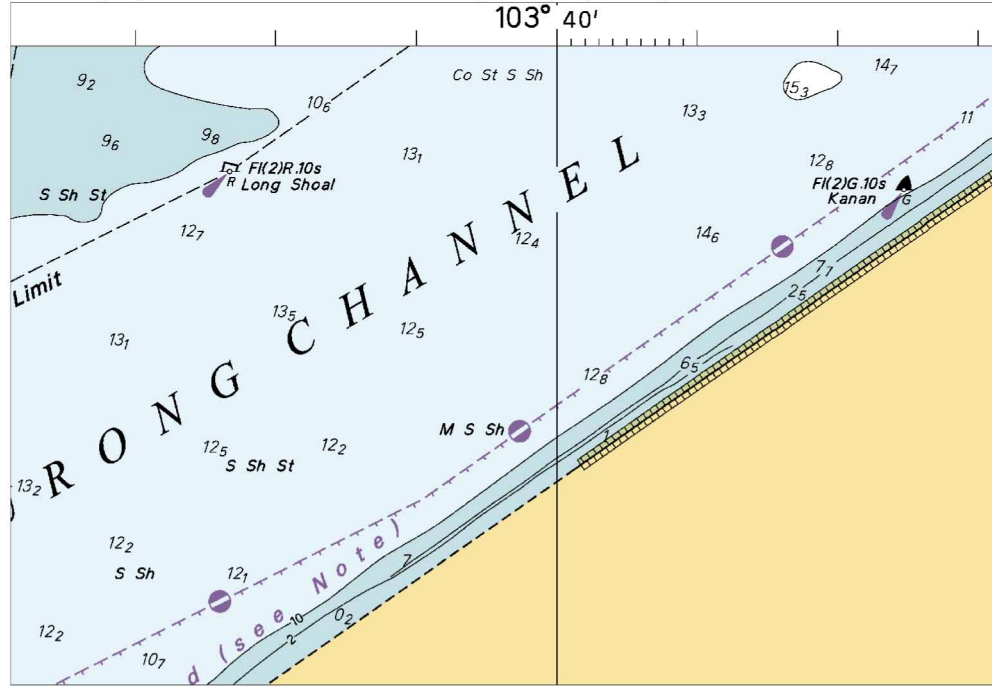
Insert  ***Fl.R.3s Puteri Harbour***

1° 24'·80N., 103° 39'·79E.

Updated to Admiralty Notices to Mariners Edition No. 43 of 2010 dated 28<sup>th</sup> October 2010.

V  
REPRINT OF ADMIRALTY NOTICES TO MARINERS  
FOR DUAL BADGED CHARTS

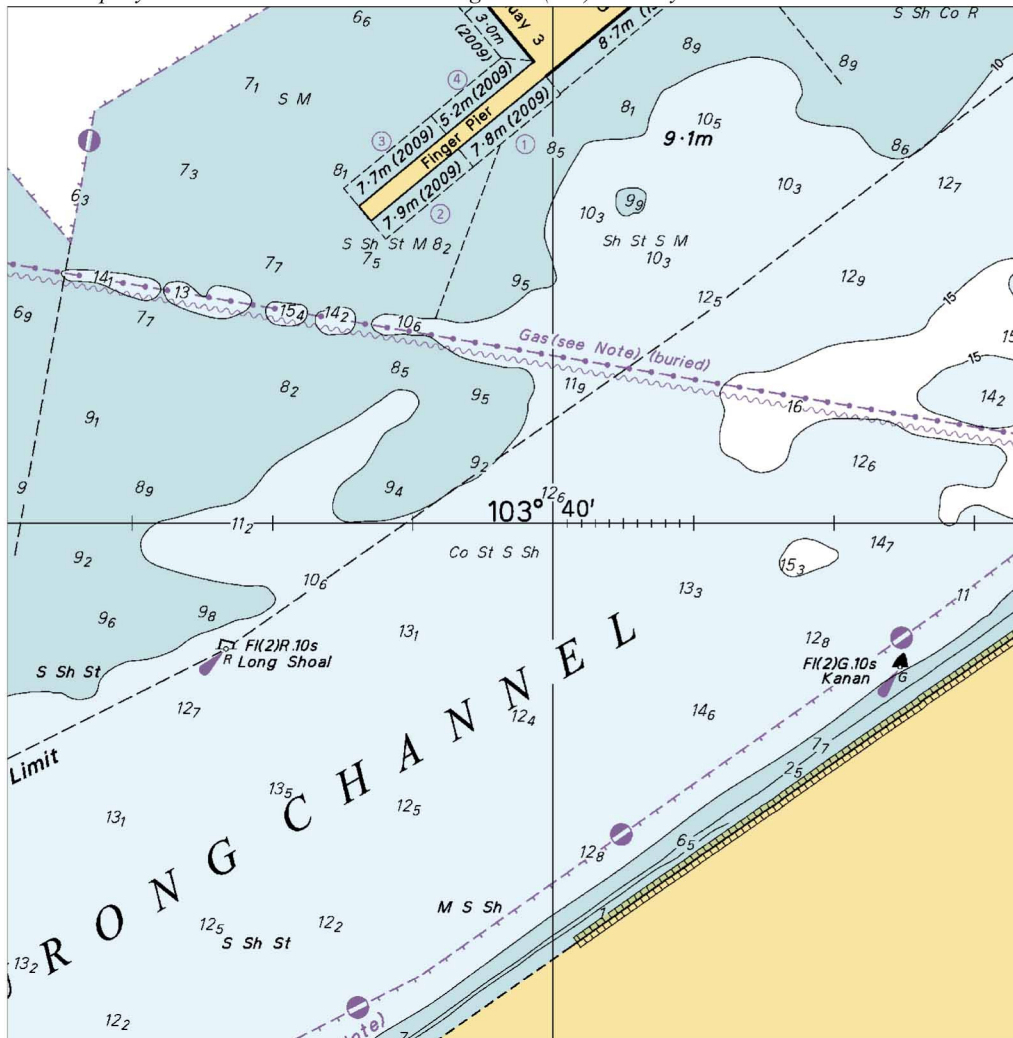
To accompany Notice to Mariners 4767/10. Image Size (mm) 90.2 by 130.3



Block for Chart No 4030

V  
REPRINT OF ADMIRALTY NOTICES TO MARINERS  
FOR DUAL BADGED CHARTS

To accompany Notice to Mariners 4767/10. Image Size (mm) 136.7 by 134.4



Block for Chart No 4033

**SINGAPORE ELECTRONIC NAVIGATIONAL CHART (ENC) DISTRIBUTORS**

Please approach any of the appointed distributors to purchase the Singapore ENC.

<b>DISTRIBUTOR</b>	<b>ADDRESS</b>	<b>TELEPHONE/FAX NO./EMAIL/WEBSITE</b>
DPM (Singapore) Pte Ltd	1 Maritime Square, #09-72 HarbourFront Centre, Singapore 099253	Tel. No.: +65 6270 4060 Fax No.: +65 6276 3858 Email: sales@dpmsingapore.com.sg Website: http://www.dpmsingapore.com.sg
Motion Smith	15 Jalan Kilang Barat #08-01/05 Frontech Centre Singapore 159357	Tel. No.: +65 6220 5098 Fax No.: +65 6225 4902 Email: sales@motsmith.com Website: http://www.motsmith.com
Transas Marine Pacific Pte Ltd	Cyber Centre 16 & 18 Jalan Kilang Barat Singapore 159358	Tel. No.: +65 6271 0200 Fax No.: +65 6271 7300 Email: dominic@transas.com.sg Website: http://www.transas.com.sg
Vector Services Pte Ltd	15 West Coast Highway, #02-14A Pasir Panjang Building Singapore 117861	Tel. No.: +65 6777 3602 Fax No.: +65 6777 9203 Email: kwchoy@pacific.net.sg
ChartWorld GmbH	Ruhrstrasse 90, D-22761 Hamburg, Germany	Tel. No.: +49 40 853 58 6942 Fax No.: +49 40 853 58 6949 Email: sales@chartworld.com Website : http://www.chartworld.com
Japan Hydrographic Association Electronic Charts Division	Daiichi Sogo Bldg, 6F 1-6-6, Hanedakuko, Ota-ku, Tokyo 144-0041, Japan	Tel. No.: +81 3 5708 7093 Fax No.: +81 3 5708 7094 Email: shimizu-6kj@jha.jp Website: http://www.jha.or.jp/en/jha/
Jeppesen Norway A/S	P.O Box 212 , N-4371 Egersund, Norway	Tel No.: +47 514 64 700 Fax No: +47 514 64 701 Email: license.marine@jeppesen.com Website : http://www.jeppesen.com
PRIMAR STAVANGER	Lervigsveien 36, P.O Box 60, N-4001 Stavanger, Norway	Tel. No.: +47 51 93 9500 Fax No.: +47 51 93 9501 Email: sales@ecc.no Website : http://www.primar.no
United Kingdom Hydrographic Office	Admiralty Way, Taunton, Somerset TA1 2DN United Kingdom	Tel. No.: +44 1823 337900 Fax No.: +44 1823 284077 Emails: ENC.SalesReports@ukho.gov.uk Website: http://www.ukho.gov.uk

## **Agents for the Maritime and Port Authority of Singapore Nautical Charts and Publications**

**Agent's Name** : **DPM (Singapore) Pte Ltd**  
**Address** : 1 Maritime Square #09-72, HarbourFront Centre,  
Singapore 099253  
**Telephone** : (65) 6270 4060  
**Fax No.** : (65) 6276 3858  
**E-mail** : sales@dpmsingapore.com.sg  
**Internet Web Site** : <http://www.dpmsingapore.com.sg>

**Agent's Name** : **E.W. Liner Charts & Publications Pte Ltd**  
**Address** : 102F, Pasir Panjang Road, #08-01, Citilink Warehouse Complex,  
Singapore 118530  
**Telephone** : (65) 6323 0773  
**Fax No.** : (65) 6323 0775  
**E-mail** : ewliner@singnet.com.sg  
**Internet Web Site** : <http://www.ewliner.com>

**Agent's Name** : **Motion Smith**  
**Address** : 15 Jalan Kilang Barat  
#08-01/05 Frontech Centre,  
Singapore 159357  
**Telephone** : (65) 6220 5098  
: (After office hours: 8163 9993)  
**Fax No.** : (65) 6225 4902  
**E-mail** : sales@motsmith.com  
**Internet Web Site** : <http://www.motsmith.com>

---

## HYDROGRAPHIC NOTE - Instructions

1. Mariners are requested to notify the Chief Hydrographer, Maritime and Port Authority of Singapore, when new or suspected dangers to navigation are discovered, changes are observed in aids to navigation or where corrections to nautical publications may be necessary. Reports, which cannot be confirmed or are lacking in certain details should not be withheld.
2. Any ambiguities of time, positioning and depth should be stressed and any firm expectation of being able to check the information provided on a following voyage should be mentioned.
3. Mariners using satellite position fixing systems, eg. GPS, should provide details of equipment and datum used (where applicable). Where bearings (true or magnetic) are taken visually or by radar to fix a position, it should include more than two objects in order to provide a check on its accuracy. A position may also be defined by bearing and distance from a conspicuous object eg. beacon, lighthouse etc.
4. The note should include a tracing or a digital image of the chart used and the details should be clearly marked.
5. Echo sounders frequently register greater depths than the advertised maximum depth for the equipment, eg. a trace appearing at 50 metres may be in fact be 550 metres or even 1050 metres for equipment whose maximum depth is 500 metres. Erroneous depths caused by 2nd transmission error can usually be recognised by the following:
  - (a) the tracing being weaker than normal for the depth registered,
  - (b) the trace appearing to pass through the transmission line,
  - (c) the feathery nature of the trace.
6. Upon receipt of a hydrographic note, a Notice to Mariners may be issued. The sender's vessel or name is quoted as the source unless the same information is also received in foreign Notices to Mariners.
7. Reports of shoals, uncharted dangers and defects in aids to navigation may also be made to the appropriate Singapore Port Operations Control Centre on VHF Channels 10, 12, 14, 68 or 73.

# HYDROGRAPHIC NOTE

To:

Chief Hydrographer  
Hydrographic Department  
Maritime and Port Authority of Singapore  
460 Alexandra Road PSA Building #20-00  
Singapore 119963

Tel : (65) 6375 1227  
Fax : (65) 6278 7646  
Email : [hydrographic@mpa.gov.sg](mailto:hydrographic@mpa.gov.sg)

**Sender's Contact Details** :

Date : .....

Name of Vessel : .....

Address of Sender : .....

Tel : ..... Fax : .....

Email : .....

**Nature of Observation** :

General Location : .....

Subject : .....

Position : Lat. .... Long. ....

Charts Used : .....

Date & Time of Observation : .....

Details : .....

.....

.....

.....

Attachment : .....

**Equipment Used** :

Type of Position Fixing : ..... GPS / DGPS ..... Others : .....

Type of Echo Sounder : .....

Name and Signature : .....

Ship's/Company's Stamp : .....