



## SINGAPOREAN NOTICES TO MARINERS

---

SECTION	CONTENT	Page
I	Index of Charts & Publications	196
II	New Publications	201
	Notices to Mariners and Chart Corrections	204
	Temporary and Preliminary Notices	205
III	Navigational Information	207
	Amendments to Publications	208
IV	Reprint of Radio Navigational Warnings	209
V	Reprint of Admiralty Notices to Mariners for Dual Badged Charts	210

---

**The monthly Notices to Mariners contain corrective information affecting charts published by the Hydrographic Department, Maritime and Port Authority of Singapore. The information contained in these Notices should be updated on the charts affected. Notices under Section II apply only to the particular Singaporean Chart(s) indicated.**

---

Mariners are requested to notify the Chief Hydrographer, Maritime and Port Authority of Singapore, immediately on the discovery of new dangers or suspected dangers to navigation and of changes or defects in aids to navigation. See Hydrographic Note on back page.

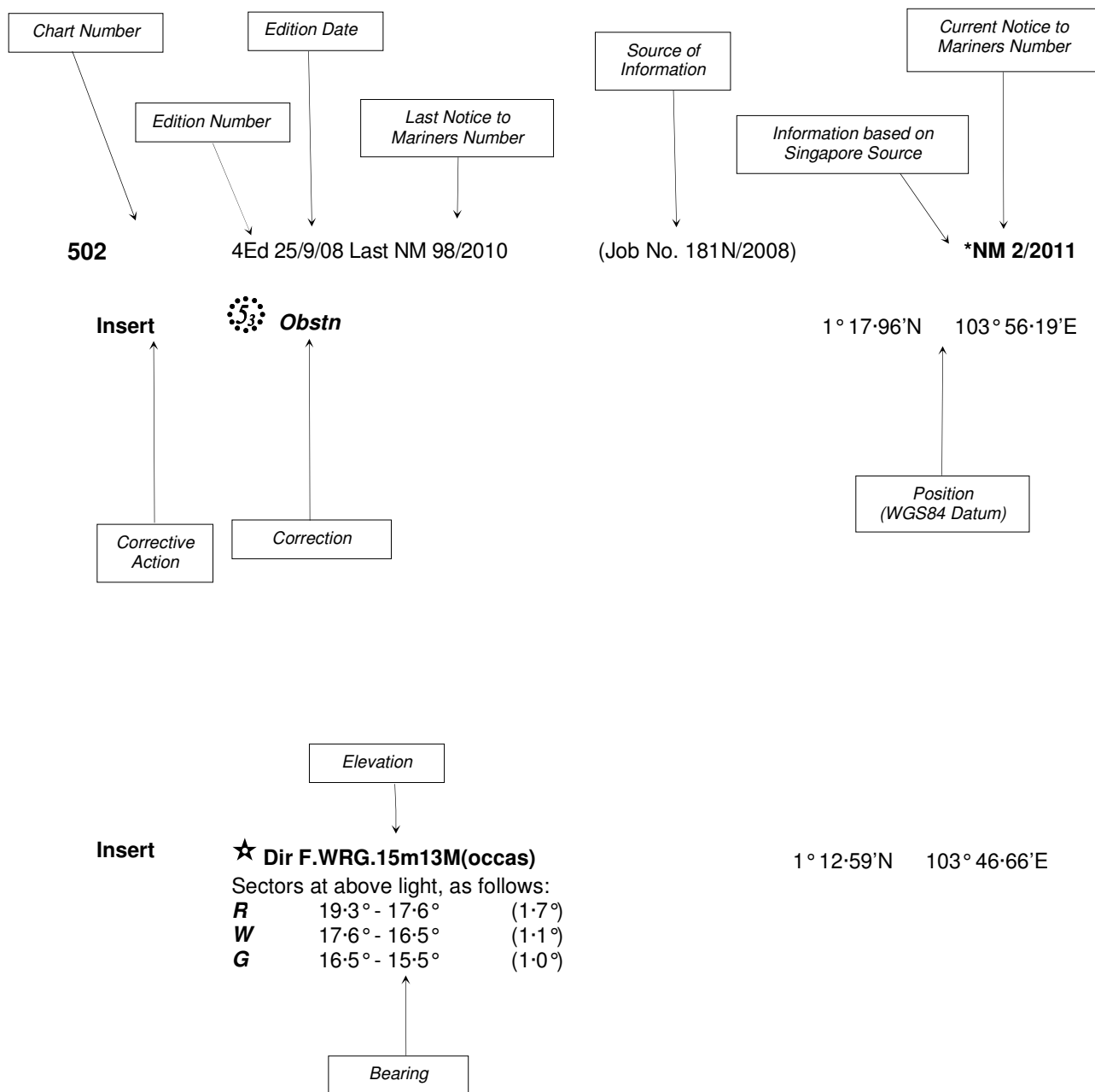
The monthly Singaporean Notices to Mariners can be accessed directly from the MPA website:  
[http://www.mpa.gov.sg/sites/port\\_and\\_shipping/circulars\\_and\\_notices/singapore\\_notices\\_to\\_mariners\(ntm\).page](http://www.mpa.gov.sg/sites/port_and_shipping/circulars_and_notices/singapore_notices_to_mariners(ntm).page)

This service is offered free of charge.

Hydrographic Department  
Maritime and Port Authority of Singapore  
460 Alexandra Road  
PSA Building #20-00  
Singapore 119963  
Tel: (65) 6375 1227  
Fax: (65) 6278 7646

## EXPLANATION OF FORMAT

The elements of a typical chart correction are explained below.



**Notes:**

- a) Notice to Mariners number followed by:  
**T** indicates a Temporary Notice (eg. **\*NM 3T/2011**).  
**P** indicates a Preliminary Notice (eg. **\*NM 4P/2011**).
- b) Bearings are true reckoned clockwise from 000° to 359°; those relating to lights are from seaward.
- c) Heights and elevations are above Mean High Water Springs.

I  
INDEX OF CHARTS AND PUBLICATIONS

INDEX OF AFFECTED CHARTS

DESCRIPTION	NOTICE NO.	PAGE NO.
Index of Singaporean Charts	-	198
Index of Dual Badged Charts	-	199
Index of Singapore Electronic Navigational Chart (ENC)	-	200
Singapore Tide Tables 2012	-	201 to 203
Singaporean Chart SP1/GSP1	*90, *91, *92, *93, *94	204
Singaporean Chart 200	95	204
Temporary and Preliminary Notices	96T, 97P, 98T, 99P	205 to 206
Port Marine Notices	*100	207
Singaporean Print-On-Demand (POD) Charts	*101	207
Amendments to Publications	*102	208
Reprint of Radio Navigational Warnings	-	209
Reprint of Admiralty Notices to Mariners for Dual Badged Charts	-	210
Singapore Electronic Navigational Chart (ENC) Distributors	-	211
Chart Agents for the Maritime and Port Authority of Singapore Nautical Charts and Publications	-	211

\*Denotes information are based on Singaporean source.

I  
INDEX OF CHARTS AND PUBLICATIONS

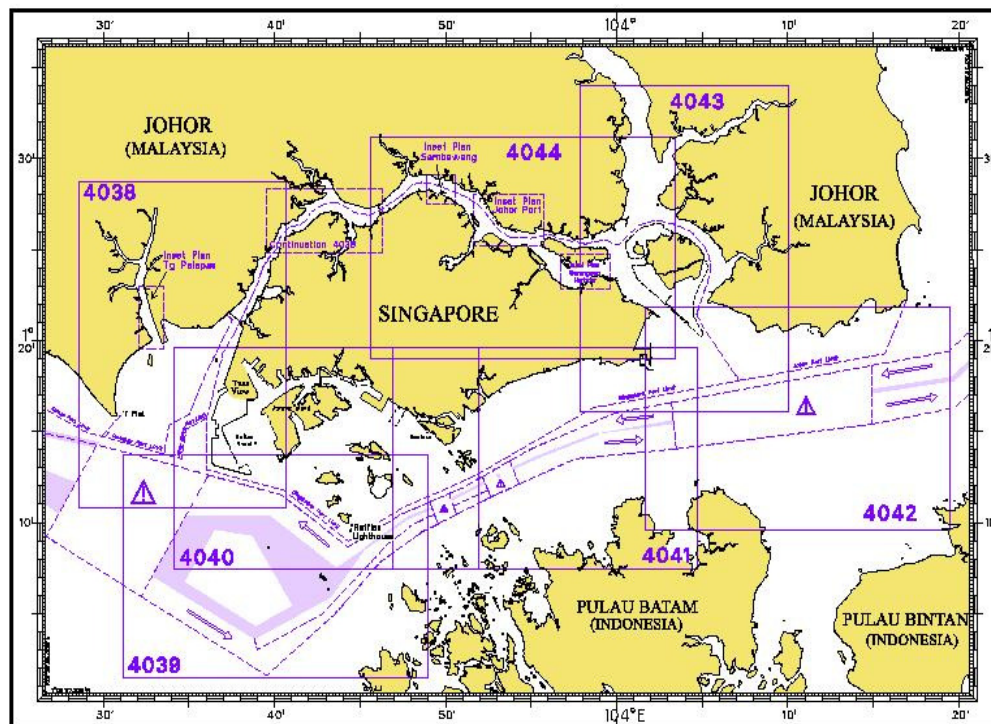
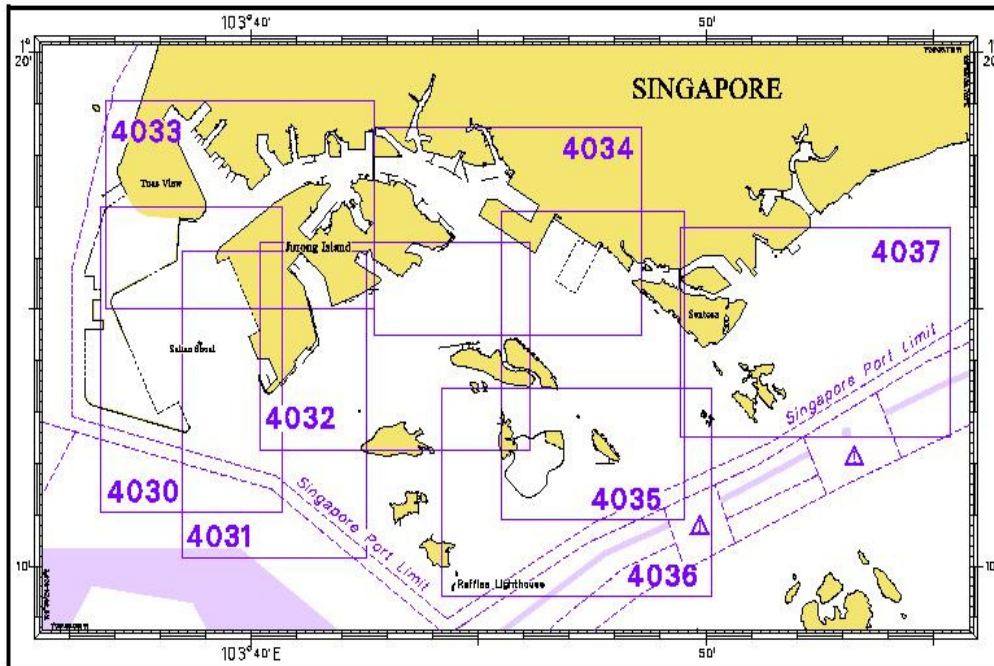
INDEX OF NOTICES

NOTICE NO.	DESCRIPTION	PAGE NO.
-	Index of Singaporean Charts	198
-	Index of Dual Badged Charts	199
-	Index of Singapore Electronic Navigational Chart (ENC)	200
-	Singapore Tide Tables 2012	201 to 203
*90, *91, *92, *93, *94	Singaporean Chart SP1/GSP1	204
95	Singaporean Chart 200	204
96T, 97P, 98T, 99P	Temporary and Preliminary Notices	205 to 206
*100	Port Marine Notices	207
*101	Singaporean Print-On-Demand (POD) Charts	207
*102	Amendments to Publications	208
-	Reprint of Radio Navigational Warnings	209
-	Reprint of Admiralty Notices to Mariners for Dual Badged Charts	210
-	Singapore Electronic Navigational Chart (ENC) Distributors	211
-	Chart Agents for the Maritime and Port Authority of Singapore Nautical Charts and Publications	211

\* Denotes information are based on Singaporean source.

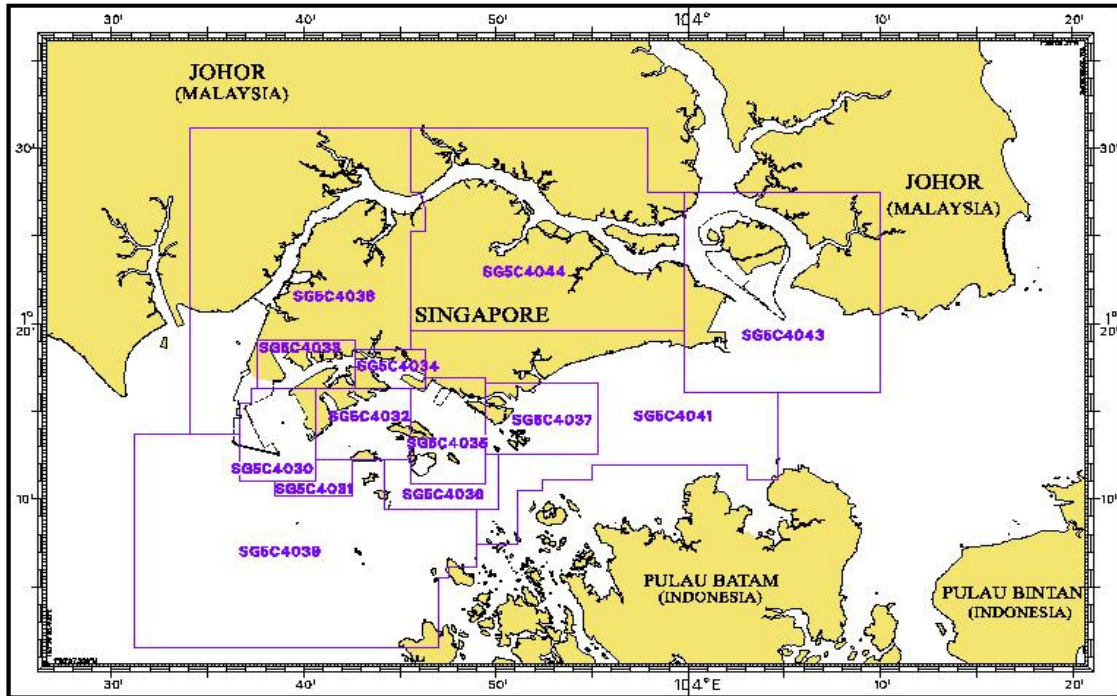


I  
**INDEX OF CHARTS AND PUBLICATIONS**  
**INDEX OF DUAL BADGED CHARTS**



# I INDEX OF CHARTS AND PUBLICATIONS

## INDEX OF SINGAPORE ELECTRONIC NAVIGATIONAL CHART (ENC)



## COVERAGE OF SINGAPORE ELECTRONIC NAVIGATIONAL CHART (ENC)

ENC Name	ENC Coverage	ENC Edition (Release 2010.1)
SG5C4030	West Jurong Anchorages and Temasek Fairway	4 <sup>th</sup> Edition (28/10/2010)
SG5C4031	Western Approaches to Jurong Island	4 <sup>th</sup> Edition (28/10/2010)
SG5C4032	Sinki Fairway	6 <sup>th</sup> Edition (27/04/2011)
SG5C4033	Tuas Bay, West Jurong Channel and Pesek Basin	4 <sup>th</sup> Edition (28/10/2010)
SG5C4034	East Jurong Channel, Pasir Panjang Terminal and West Keppel Fairway	9 <sup>th</sup> Edition (29/09/2011)
SG5C4035	Western Anchorages, Jong Fairway and Cruise Bay	10 <sup>th</sup> Edition (29/09/2011)
SG5C4036	Raffles Lighthouse to The Sisters	5 <sup>th</sup> Edition (27/04/2011)
SG5C4037	Keppel Harbour, Tanjong Pagar Terminal and Approaches	5 <sup>th</sup> Edition (27/04/2011)
SG5C4038	Johor Strait – Western Part	4 <sup>th</sup> Edition (28/10/2010)
SG5C4039	Western Approaches to Main Strait	4 <sup>th</sup> Edition (11/08/2011)
SG5C4041	Pulau Sebarok to Changi	5 <sup>th</sup> Edition (11/08/2011)
SG5C4043	Kuala Johor and Sungai Johor	6 <sup>th</sup> Edition (28/07/2011)
SG5C4044	Johor Strait – Eastern Part	6 <sup>th</sup> Edition (28/07/2011)

## II NEW PUBLICATIONS

### PUBLICATION OF SINGAPORE TIDE TABLES YEAR 2012

#### Summary of Publication

This 251-page book contains Tidal Height and Tidal Stream Predictions covering stations in Singapore port waters and along the Malacca and Singapore Straits.

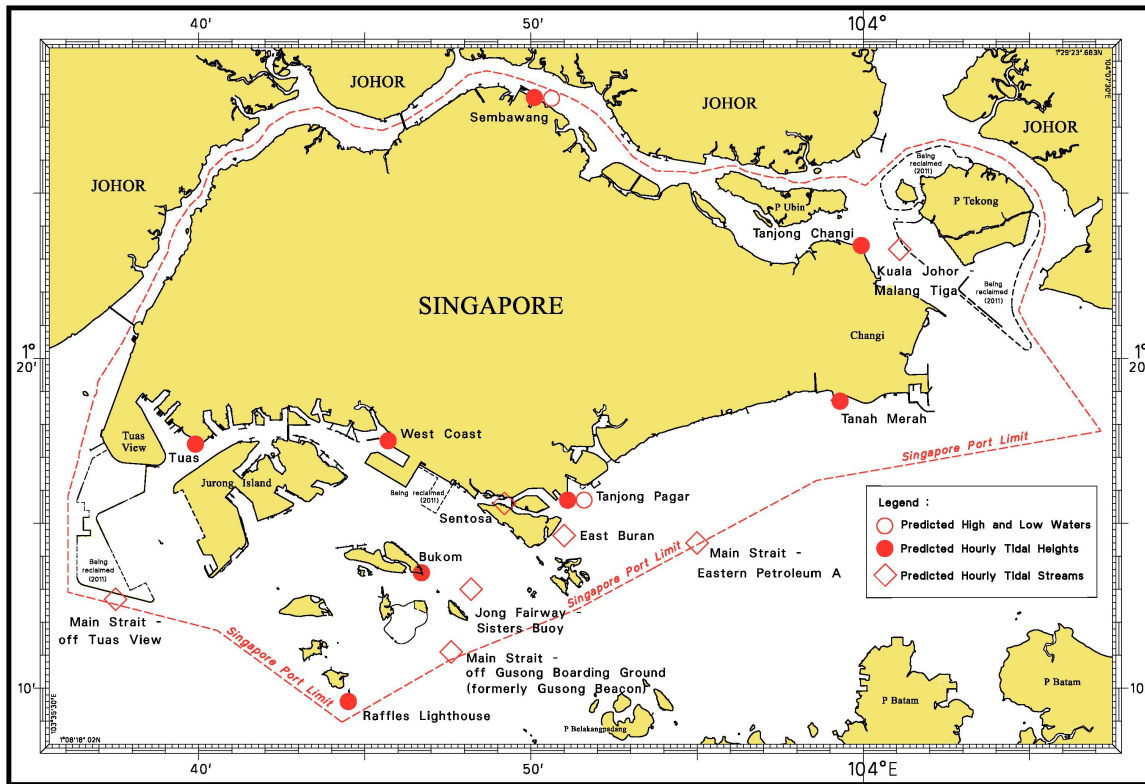
A new Tidal Stream Predictions station (Main Strait – off Tuas View) is included in the publication. This publication consist of 5 main segments to facilitate easy reference.

1. **High and Low Water Predictions** at the following stations:
  - a) Tanjong Pagar
  - b) Sembawang
  
2. **Hourly Tidal Height Predictions** at the following stations:
  - a) Tuas
  - b) Raffles Lighthouse
  - c) West Coast
  - d) Bukom
  - e) Tanjong Pagar
  - f) Tanah Merah
  - g) Tanjong Changi
  - h) Sembawang
  - i) Singapore Strait - Horsburgh Lighthouse
  
3. **Hourly Tidal Stream Predictions** at the following stations:
  - a) **Main Strait – off Tuas View**
  - b) Jong Fairway – Sisters Buoy
  - c) Main Strait – off Gusong Boarding Ground (formerly Gusong Beacon)
  - d) Sentosa
  - e) East Buran
  - f) Main Strait – Eastern Petroleum A
  - g) Kuala Johor – off Malang Tiga
  
4. **Maximum and Slack Tidal Stream Predictions** at the following stations:
  - a) Malacca Strait – Off The Brothers Light
  - b) Singapore Strait – Selat Phillip
  - c) Singapore Strait – Karang Banteng (Buffalo Rock)
  - d) Singapore Strait - Horsburgh Lighthouse
  
5. **Malacca Strait – High and Low Water Predictions** at the following stations:
  - a) Kedah Pier, Pulau Pinang
  - b) Port Dickson
  - c) Kuala Batu Pahat

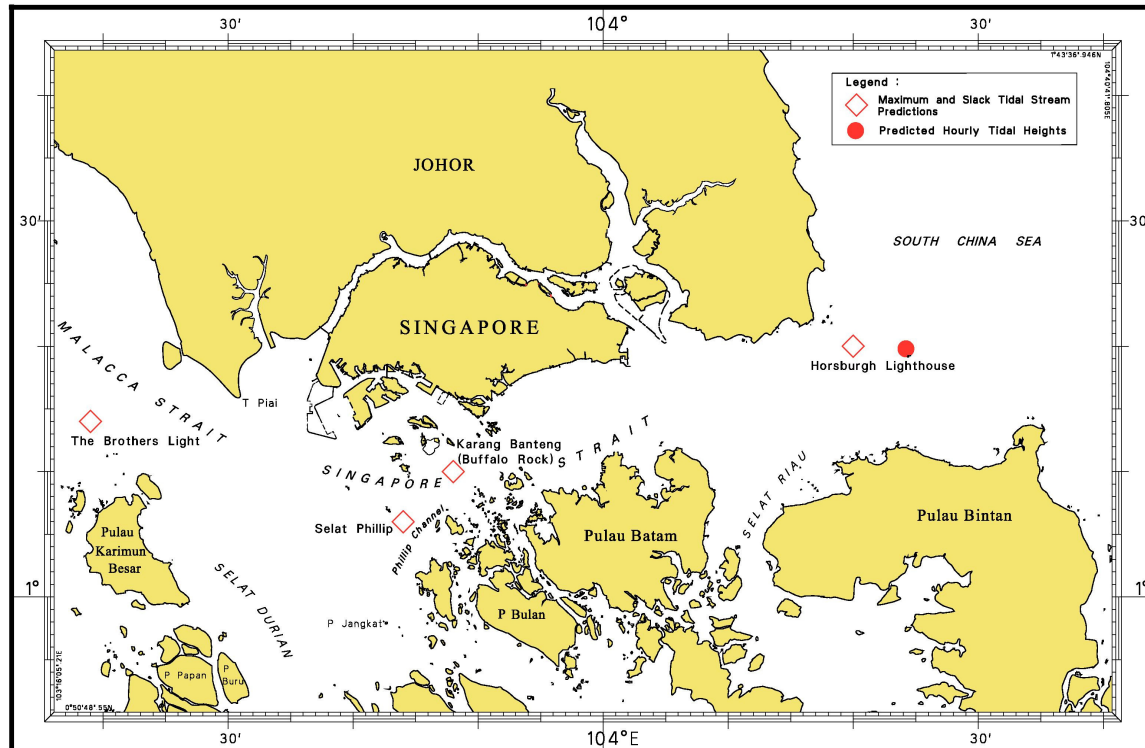
The locations of the above stations are shown in the chartlets below:

## II NEW PUBLICATIONS

### Tidal Prediction Stations within Singapore port waters



### Tidal Prediction Stations in Malacca and Singapore Straits



## II NEW PUBLICATIONS

### Tidal Prediction Stations in Malacca Strait



This publication is available from the following Chart Agents:

1. DPM (Singapore) Pte Ltd
2. E.W. Limer Charts & Publications Pte Ltd
3. Motion Smith

(Please refer Page 211 for details)

**II**  
**NOTICES TO MARINERS AND CHART CORRECTIONS**

<b>SP1/GSP1</b>	6 Ed 27/1/11 Last NM 82/2011	(HD/HY/J00101911)	<b>*NM 90/2011</b>
<b>Insert</b>	⊙ <i>Obstn</i>		1°18·06'N 103°42·09'E
	⊙ <i>Obstn</i>		1°17·99'N 103°42·17'E
		(HD/HY/A00108911)	<b>*NM 91/2011</b>
<b>Insert</b>	⊙ <i>Obstn</i>		1°15·58'N 103°51·79'E
		(HD/HY/A00107311)	<b>*NM 92/2011</b>
<b>Insert</b>	⊙ <i>Wk</i>		1°16·54'N 103°53·92'E
		(HE025/95/2011)	<b>*NM 93/2011</b>
<b>Move</b>	Jurong Dua light-buoy from: to:		1°14·67'N 103°39·61'E 1°14·86'N 103°39·52'E
		(HE025/96/2011)	<b>*NM 94/2011</b>
<b>Move</b>	Jurong Tiga light-buoy from: to:		1°15·27'N 103°39·33'E 1°15·40'N 103°39·27'E
<hr/>			
<b>200</b>	3 Ed 22/9/11	(Admiralty Notice 43/4893/2011)	<b>NM 95/2011</b>
<b>Amend</b>	maintained depth to, <i>16.5m</i> , centred on:		2°53·11'N 101°15·57'E
<hr/>			

**II**  
**TEMPORARY AND PRELIMINARY NOTICES**

**(NM 96T/2011) CONSTRUCTION OF MARINA COASTAL EXPRESSWAY AT MARINA BARRAGE – LAYING OF BUOYS**

The following buoys was laid off Marina Barrage on 28<sup>th</sup> September 2011.

Buoys	Latitude (N)	Longitude (E)	Shape	Light Character
POC485-1	1°16.863'	103°52.414'	Spar with 'x' topmark	Fl.Y.4s
POC485-2	1°16.788'	103°52.469'	Spar with 'x' topmark	Fl.Y.4s
POC485-3	1°16.879'	103°52.436'	Spar with 'x' topmark	Fl.Y.4s
POC485-4	1°16.804'	103°52.490'	Spar with 'x' topmark	Fl.Y.4s

**Duration :** The buoys will be removed after a 3 months period.

**Remarks :** As construction work is being conducted in the area, Mariners are advised to navigate with caution when in the vicinity.

**Charts affected :** SP1/GSP1 and 4041

**Source :** HE025/83 to 86/2011

**(NM 97P/2011) WORKING AREA AND DUMPING SITE ESTABLISHED OFF THE COAST OF PENDERANG, JOHOR**

This is to notify that a working area and dumping site has been established for dredging and reclamation works for the development of an Independent Deepwater Terminal off the coast of Pengerang, district of Kota Tinggi Johor, within the Pasir Gudang port limit and the details are as follows:

	Working Area and Dumping Site	
	Latitude	Longitude
1.	1°20.61'N	104°09.07'E
2.	1°18.50'N	104°08.83'E
3.	1°18.91'N	104°11.35'E
4.	1°20.76'N	104°11.57'E

**Duration :** 17<sup>th</sup> October 2011 to 16<sup>th</sup> October 2012

**Working hours :** 24 hours daily

**Remarks :** All vessels are required to keep clear of the working area and to navigate with caution when in the vicinity.

**Charts affected :** 202, 502, 4042 and 4043.

**Source :** Marine Department Malaysia, Southern Region, Port Circular No. 18/2011.

**II**  
**TEMPORARY AND PRELIMINARY NOTICES**

**(NM 98T/2011) ASIA SUBMARINE CABLE EXPRESS (ASE) – Cable Installation Segment 1.9**

**Remark :** The cable installation Segment 1.9 will be laid at the Eastbound Lane of the Traffic Separation Scheme (TSS), thence through the eastern entrance of the TSS, Singapore Strait.

**Work Vessel :** Cable Ship FU HAI

**Date of Installation:** With effect from 23<sup>rd</sup> November to 10<sup>th</sup> December 2011.

**Operating hours :** Daylight hours from Point A to Point C and 24 hours basis after Point C.

1. The submarine cable routes are listed as follows :

RPL No.	(RPL Co-ordinates: WGS84)		Remarks (Working hours)
	Latitude (N)	Longitude (E)	
From Point A	1° 15·39'	104° 04·75'	Daylight hours
to Point B	1° 14·35'	104° 05·62'	Daylight hours
to Point C	1° 14·80'	104° 09·13'	Daylight hours
to Point D	1° 16·20'	104° 14·80'	24 hours
to Point E	1° 20·14'	104° 23·98'	24 hours
to Point F	1° 23·98'	104° 27·27'	24 hours
to Point G	1° 28·84'	104° 34·42'	24 hours
to Point H	1° 37·33'	104° 38·49'	24 hours
to Point I	1° 40·23'	104° 40·33'	24 hours

2. Charts affected : GSP1, SP1, 202, 502, 503, 4041, 4042 and 4043.

3. Mariners are advised  
 a) to navigate with caution.  
 b) not to anchor or trawl in the vicinity of the cable route.  
 c) to give a wide berth when approaching the working vessel.

Source : HD/DB67/9/2011.

**(NM 99P/2011) OBSTRUCTION OFF THE TANJUNG BELUNGKOR FERRY TERMINAL – PASIR GUDANG PORT LIMIT - JOHOR**

This is to notify that an obstruction exist in the waters off the Tanjung Belungkor Ferry Terminal within the Pasir Gudang port limit at the following approximate position :

Latitude (N)	Longitude (E)
1° 26·157'	104° 40·374'

**Description :** Two metal poles protruding vertically 4 metres from the seabed.

**Remarks :** All vessels are advised to keep clear of the obstruction.

**Charts affected :** SP1/GSP1 and 4043

**Source :** Marine Department Malaysia, Southern Region, Port Circular No. 17/2011.

### III NAVIGATIONAL INFORMATION

#### \*(NM 100/2011) PORT MARINE NOTICES

The following PMNs have been shortlisted, as they would be of particular interest to mariners.

These notices can be accessed directly from MPA website:

[http://www.mpa.gov.sg/sites/port\\_and\\_shipping/circulars\\_and\\_notices/port\\_marine\\_notices.page](http://www.mpa.gov.sg/sites/port_and_shipping/circulars_and_notices/port_marine_notices.page)

<b>PMN No.</b>	<b>Subject</b>
131/2011	Installation of Silt Barricade off Pasir Panjang Ferry Terminal.
132/2011	Dredging works off Keppel FEL Shipyard.
133/2011	Reclamation of Jurong Island Phase 4.
136/2011	Dredging and Dumping at Pasir Panjang Terminal Project.
137/2011	Soil investigation works between Pulau Sebarok and Pulau Sakeng.
139/2011	Reclamation at Pasir Panjang Terminal and Pasir Panjang Wharves.
140/2011	Reclamation work at Tuas View Extension.
141/2011	Dredging works at Sungei Pandan.
142/2011	Construction of SLNG Terminal at Jurong Island.
143/2011	Construction of sea barrier in the West Johor Strait.
146/2011	Closure of Marina South Pier Jetty No. 2 from 28 <sup>th</sup> October to 28 <sup>th</sup> November 2011.

---

#### \*(NM 101/2011) SINGAPOREAN PRINT-ON-DEMAND (POD) CHARTS

Print-On-Demand (POD) Charts are the most up-to-date paper nautical charts printed for navigational use. These nautical charts are produced in accordance with the International Hydrographic Organisation (IHO) charting specifications. These official nautical charts are continually updated to the latest Notices to Mariners before they are printed and sold to users.

These POD Charts include SP1/GSP1, 200, 201, 202, 500, 501, 502 and 503.

#### BENEFITS TO OUR CUSTOMERS

##### **Convenience**

Customers need not make numerous hand corrections to the nautical charts before use. In addition the updated POD Charts are more accurate and reliable than offset printed charts with hand corrections.

##### **Clarity**

Clarity in the presentation of updated information as compared to lithographic printed charts, where in some cases there are several overlapping corrections over existing information.

##### **Coverage**

The POD Charts cover the Malacca and Singapore Straits, from One Fathom Bank to Horsburgh Lighthouse.

**III**  
**AMENDMENTS TO PUBLICATIONS**

**\*(NM 102/2011) UPDATING OF PUBLICATION "SINGAPORE PORT INFORMATION 2010/2011"**

1. Page 148 – Item 14

**WHARVES AND BERTHS**

**SENOKO GASWORK STATION (CITY GAS PTE LTD)(1°28.3'N, 103°48.4'E)**

Insert the following:

Berth	Depth Alongside (Year Surveyed)	
	Delete	Insert
<b>Senoko Gaswork Jetty</b>	8.2m (1996)	<b>7.5m (2011)</b>

Source: HD/HY Code M00103011

2. Page 159 Item 44a

Insert the following:

Berth	Length of Berth	Depth Alongside (Year Surveyed)	Controlling Depth In Approaches
<b>1 (OST1)</b>	<b>203.5m</b>	<b>12.9m (2011)</b>	-

Source: Berth List and HD/HY/H00101711

Note : Delete former SNM 10/89/2011 (Page 159 Item 44a)

**IV**  
**REPRINT OF RADIO NAVIGATIONAL WARNINGS**

The following Radio Navigational Warnings have been shortlisted, as they would be of particular interest to mariners.

TT173

VESSELS IN EAST JOHOR STRAIT ARE ADVISED TO NAVIGATE WITH CAUTION WHEN NEAR THE PROJECT AREAS OFF PULAU TEKONG, CHANGI AND MALANG PAPAN AS SHALLOW WATER AREAS EXIST. VESSELS ARE ADVISED TO KEEP LOOKOUT FOR TUGS AND BARGES NAVIGATING NEAR THE PROJECT AREAS AND PASSENGER FERRIES CROSSING BETWEEN CHANGI AND PULAU TEKONG AND VICINITY OF PASIR GUDANG.

TT619

DREDGER "ANDROMEDA V" IS CONDUCTING DREDGING OPERATIONS IN COORDINATES:

01°14.890' N 103°58.120' E

01°16.210' N 104°01.630' E

01°16.090' N 104°01.670' E

01°14.680' N 103°58.200' E

VESSELS ARE TO KEEP CLEAR OF THE WORKING VESSEL.

TT753

A SMALL WOODEN CARGO BOAT 10M IN LENGTH SUNK AT 01°15.73'N 103°32.10'E.

TT884

SALVAGE OPERATIONS UNDERWAY IN 01°13.40'N 103°57.75'E. ALL SHIPS ARE REQUESTED TO GIVE A WIDE BERTH OF AT LEAST 5 CABLES WHEN PASSING THE AREA.

TT908

DANGER TO NAVIGATION

2 TUGBOATS ARE REPORTED SUNK AT 01°19.63'N 104°19.28'E

TT931

VESSELS NAVIGATING IN THE SINGAPORE STRAIT ARE REQUESTED NOT TO DIRECT THEIR HIGH INTENSITY SEARCHLIGHTS SKYWARD IN THE VICINITY OF CHANGI AIRPORT TO AVOID DISRUPTION TO AIR NAVIGATION.

TT961

VESSELS INTENDING TO CROSS THE TRAFFIC SEPERATION SCHEME(TSS) OR PRECAUTIONARY AREAS IN THE SINGAPORE STRAIT DURING THE HOURS OF DARKNESS ARE RECOMMENDED TO DISPLAY THE NIGHT SIGNALS CONSISTING OF 3 ALL-ROUND GREEN LIGHTS IN A VERTICAL LINE WITH EFFECT FROM 1ST JULY 2011 AT 0000HRS UTC (0800HRS SINGAPORE LOCAL TIME) AS DETAILED IN MARITIME AND PORT AUTHORITY OF SINGAPORE'S PORT MARINE CIRCULAR, 02 OF 2011 DATED 30 MAY 2011.

TT985

BATU BERHANTI ISOLATED DANGER BUOY FL(2)5S POSITION 01°11.75'N 103°52.50'E IS REPORTED MISSING. ADVISED CAUTION.

SR154

AN UNIDENTIFIED VESSEL REPORTED SUNK SOUTH WEST OF HORSBURGH AT 01°16.12'N 104°21.50'E.

ISSUED BY SINGAPORE PORT OPERATIONS CONTROL CENTRE (as at 30<sup>th</sup> October 2011)

V  
**REPRINT OF ADMIRALTY NOTICES TO MARINERS  
 FOR DUAL BADGED CHARTS**

**These notices can be accessed directly from UKHO Website:**

<http://www.ukho.gov.uk/ProductsandServices/MaritimeSafety/Pages/NMPublic.aspx>

**4606\* SINGAPORE – Jurong Island – Sakra Basin, Selat Pandan and T. China South-westwards – Dredged depth.  
 Obstruction. Radio reporting point.**

Source: Maritime and Port Authority of Singapore

**Chart 4032** [ *previous update 4304/11* ] WGS84 DATUM

Amend dredged depth to, *10.0m (2011)*, centred on: 1° 15'·855N., 103° 42'·831E.

**Chart 4037** [ *previous update 3567/2011* ] WGS84 DATUM

Insert  **Obstn** 1° 14'·354N., 103° 49'·650E.

**Chart 4040** [ *previous update 4304/2011* ] WGS84 DATUM

Insert  **Obstn** 1° 14'·35N., 103° 49'·65E.

Delete  1° 15'·42N., 103° 43'·79E.

**Chart 4041** [ *previous update 3756/2011* ] WGS84 DATUM

Insert  **Obstn** 1° 14'·35N., 103° 49'·65E.

Updated to Admiralty Notices to Mariners Edition No. 43 of 2011 dated 20<sup>th</sup> October 2011.

**SINGAPORE ELECTRONIC NAVIGATIONAL CHART (ENC) DISTRIBUTORS**

Please approach any of the appointed distributors to purchase the Singapore ENC.

DISTRIBUTOR	ADDRESS	TELEPHONE/FAX NO./EMAIL/WEBSITE
DPM (Singapore) Pte Ltd	1 Maritime Square, #09-72 HarbourFront Centre, Singapore 099253	Tel. No.: +65 6270 4060 Fax No.: +65 6276 3858 Email: sales@dpsmsingapore.com.sg Website: http://www.dpsmsingapore.com.sg
MARIS Information Systems (MARIS)	52 Telok Blangah Road #01-06 Telok Blangah House Singapore 058809	Tel. No.: +65 6276 1472 Fax No.: +65 6276 1473 Email: support@maris.sg Website: http://www.maris.no
Maritime Information Systems AS (MARIS)	Danholmen 25, 3128 Notteroy, Norway	Tel. No.: +47 33 30 42 50 Fax No.: +47 33 30 42 51 Email: sales@maris.no Website: http://www.maris.no
Motion Smith	15 Jalan Kilang Barat #08-01/05 Frontech Centre Singapore 159357	Tel. No.: +65 6220 5098 Fax No.: +65 6225 4902 Email: sales@motsmith.com Website: http://www.motsmith.com
Transas Marine Pacific Pte Ltd	Cyber Centre 16 & 18 Jalan Kilang Barat Singapore 159358	Tel. No.: +65 6271 0200 Fax No.: +65 6271 7300 Email: dominic@transas.com.sg Website: http://www.transas.com.sg
Vector Services Pte Ltd	15 West Coast Highway, #02-14A Pasir Panjang Building Singapore 117861	Tel. No.: +65 6777 3602 Fax No.: +65 6777 9203 Email: kwchoy@pacific.net.sg
ChartWorld GmbH	Ruhrstrasse 90, D-22761 Hamburg, Germany	Tel. No.: +49 40 853 58 6942 Fax No.: +49 40 853 58 6949 Email: sales@chartworld.com Website : http://www.chartworld.com
Japan Hydrographic Association Electronic Charts Division	Daiichi Sogo Bldg, 6F 1-6-6, Hanedakuko, Ota-ku, Tokyo 144-0041, Japan	Tel. No.: +81 3 5708 7093 Fax No.: +81 3 5708 7094 Email: shimizu-6kj@jha.jp Website: http://www.jha.or.jp/en/jha/
Jeppesen Norway A/S	P.O Box 212 , N-4371 Egersund, Norway	Tel No.: +47 514 64 700 Fax No: +47 514 64 701 Email: license.marine@jeppesen.com Website : http://www.jeppesen.com
PRIMAR STAVANGER	Lervigsveien 36, P.O Box 60, N-4001 Stavanger, Norway	Tel. No.: +47 51 93 9500 Fax No.: +47 51 93 9501 Email: sales@ecc.no Website : http://www.primar.no
United Kingdom Hydrographic Office	Admiralty Way, Taunton, Somerset TA1 2DN United Kingdom	Tel. No.: +44 1823 337900 Fax No.: +44 1823 284077 Email: ENC.SalesReports@ukho.gov.uk Website: http://www.ukho.gov.uk

**Chart Agents for the Maritime and Port Authority of Singapore  
Nautical Charts and Publications**

Please approach any of the appointed chart agent to purchase the Singapore Nautical Charts and Publications.

CHART AGENT	ADDRESS	TELEPHONE/FAX NO./EMAIL/WEBSITE
DPM (Singapore) Pte Ltd	1 Maritime Square, #09-72 HarbourFront Centre, Singapore 099253	Tel. No.: +65 6270 4060 Fax No.: +65 6276 3858 Email: sales@dpsmsingapore.com.sg Website: http://www.dpsmsingapore.com.sg
E.W. Liner Charts & Publications Pte Ltd	102F, Pasir Panjang Road, #08-01, Citilink Warehouse Complex, Singapore 118530	Tel. No.: +65 6323 0773 Fax No.: +65 6323 0775 Email: ewliner@singnet.com.sg Website: http://www.ewliner.com
Motion Smith	15 Jalan Kilang Barat #08-01/05 Frontech Centre Singapore 159357	Tel. No.: +65 6220 5098 (After office hours: +65 8163 9993) Fax No.: +65 6225 4902 Email: sales@motsmith.com Website: http://www.motsmith.com

## HYDROGRAPHIC NOTE - Instructions

1. Mariners are requested to notify the Chief Hydrographer, Maritime and Port Authority of Singapore, when new or suspected dangers to navigation are discovered, changes are observed in aids to navigation or where corrections to nautical publications may be necessary. Reports, which cannot be confirmed or are lacking in certain details should not be withheld.
2. Any ambiguities of time, positioning and depth should be stressed and any firm expectation of being able to check the information provided on a following voyage should be mentioned.
3. Mariners using satellite position fixing systems, eg. GPS, should provide details of equipment and datum used (where applicable). Where bearings (true or magnetic) are taken visually or by radar to fix a position, it should include more than two objects in order to provide a check on its accuracy. A position may also be defined by bearing and distance from a conspicuous object eg. beacon, lighthouse etc.
4. The note should include a tracing or a digital image of the chart used and the details should be clearly marked.
5. Echo sounders frequently register greater depths than the advertised maximum depth for the equipment, eg. a trace appearing at 50 metres may be in fact be 550 metres or even 1050 metres for equipment whose maximum depth is 500 metres. Erroneous depths caused by 2nd transmission error can usually be recognised by the following:
  - (a) the tracing being weaker than normal for the depth registered,
  - (b) the trace appearing to pass through the transmission line,
  - (c) the feathery nature of the trace.
6. Upon receipt of a hydrographic note, a Notice to Mariners may be issued. The sender's vessel or name is quoted as the source unless the same information is also received in foreign Notices to Mariners.
7. Reports of shoals, uncharted dangers and defects in aids to navigation may also be made to the appropriate Singapore Port Operations Control Centre on VHF Channels 10, 12, 14, 68 or 73.

**HYDROGRAPHIC NOTE**

To:

Chief Hydrographer  
Maritime and Port Authority of Singapore  
460 Alexandra Road PSA Building #20-00  
Singapore 119963

Tel : (65) 6375 1227  
Fax : (65) 6278 7646  
Email : [hydrographic@mpa.gov.sg](mailto:hydrographic@mpa.gov.sg)

**Sender's Contact Details** :

Date : .....  
Name of Vessel : .....  
Address of Sender : .....  
Tel : ..... Fax : .....  
Email : .....

**Nature of Observation** :

General Location : .....  
Subject : .....  
Position : Lat. .... Long. ....  
Charts Used : .....  
Date & Time of Observation : .....  
Details : .....  
.....  
.....  
Attachment : .....

**Equipment Used** :

Type of Position Fixing : ..... GPS / DGPS ..... Others : .....  
Type of Echo Sounder : .....

Name and Signature : .....

Ship's/Company's Stamp : .....