



SINGAPOREAN NOTICES TO MARINERS

SECTION	CONTENT	Page
I	Index of Charts & Publications	1
II	New Publications	6
	Notices to Mariners and Chart Corrections	9
	Temporary and Preliminary Notices	10
III	Navigational Information	11
	Amendments to Publications	13
IV	Reprint of Radio Navigational Warnings	14
V	Extract of Admiralty Notices to Mariners for Dual Badged Charts	15

The monthly Notices to Mariners contain corrective information affecting charts published by the Hydrographic Department, Maritime and Port Authority of Singapore. The information contained in these Notices should be updated on the charts affected. Notices under Section II apply only to the particular Singaporean Chart(s) indicated.

Mariners are requested to notify the Chief Hydrographer, Maritime and Port Authority of Singapore, immediately on the discovery of new dangers or suspected dangers to navigation and of changes or defects in aids to navigation. See Hydrographic Note on back page.

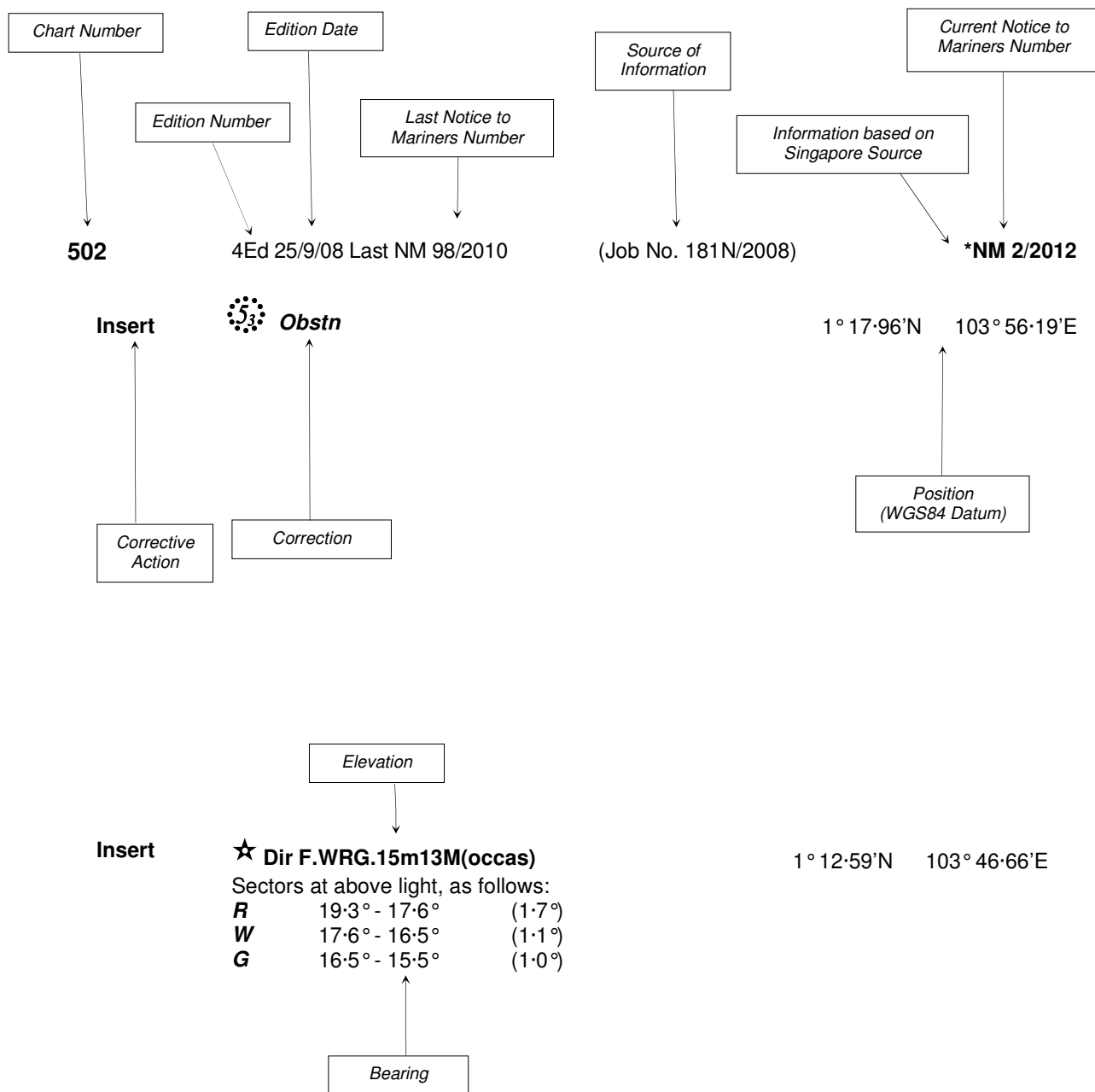
The monthly Singaporean Notices to Mariners can be accessed directly from the MPA website:
[http://www.mpa.gov.sg/sites/port_and_shipping/circulars_and_notices/singapore_notices_to_mariners\(ntm\).page](http://www.mpa.gov.sg/sites/port_and_shipping/circulars_and_notices/singapore_notices_to_mariners(ntm).page)

This service is offered free of charge.

Hydrographic Department
Maritime and Port Authority of Singapore
460 Alexandra Road
PSA Building #20-00
Singapore 119963
Tel: (65) 6375 1227
Fax: (65) 6278 7646

EXPLANATION OF FORMAT

The elements of a typical chart correction are explained below.



Notes:

- a) Notice to Mariners number followed by:
T indicates a Temporary Notice (eg. ***NM 3T/2012**).
P indicates a Preliminary Notice (eg. ***NM 4P/2012**).
- b) Bearings are true reckoned clockwise from 000° to 359°; those relating to lights are from seaward.
- c) Heights and elevations are above Mean High Water Springs.

I
INDEX OF CHARTS AND PUBLICATIONS

INDEX OF AFFECTED CHARTS

DESCRIPTION	NOTICE NO.	PAGE NO.
Index of Singaporean Charts	-	3
Index of Dual Badged Charts	-	4
Index of Singapore Electronic Navigational Chart (ENC)	-	5
Singapore Tide Tables 2013	-	6 to 8
Singaporean Chart GSP1/SP1	*88	9
Singaporean Chart 202	89	9
Temporary and Preliminary Notices	90T	10
Singapore Port Marine Notices	*91	11
Malaysia Marine Department Notices	92	11
Singaporean Print-On-Demand (POD) Charts	*93	11, 12
Amendments to Publications	*94	13
Reprint of Radio Navigational Warnings	-	14
Extract of Admiralty Notices to Mariners for Dual Badged Charts	-	15, 16
Singapore Electronic Navigational Chart (ENC) Distributors	-	17
Chart Agents for the Maritime and Port Authority of Singapore Nautical Charts and Publications	-	18

*Denotes information are based on Singaporean source.

I
INDEX OF CHARTS AND PUBLICATIONS

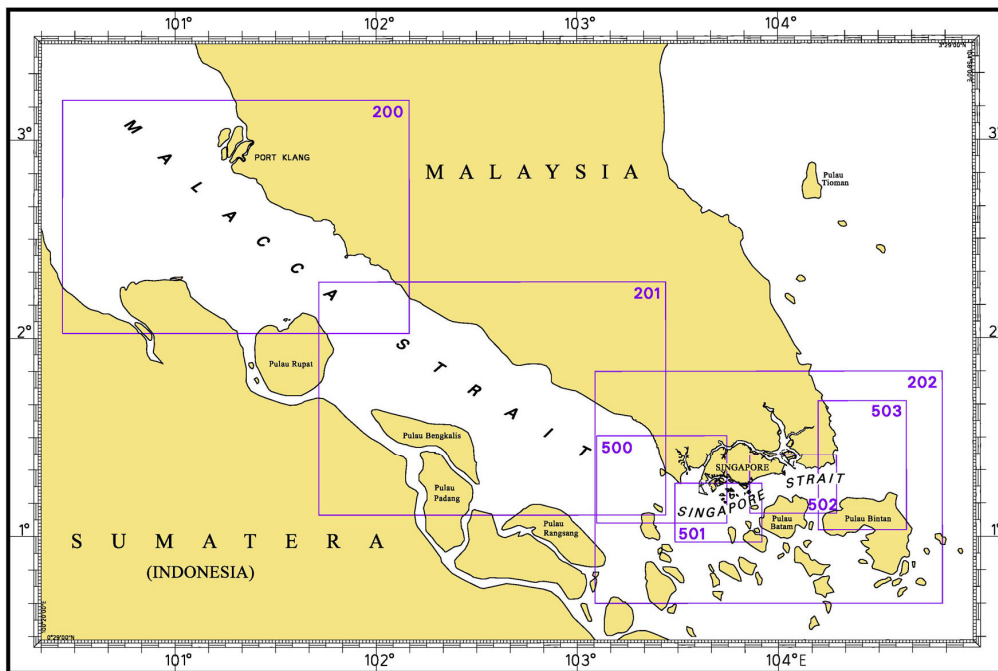
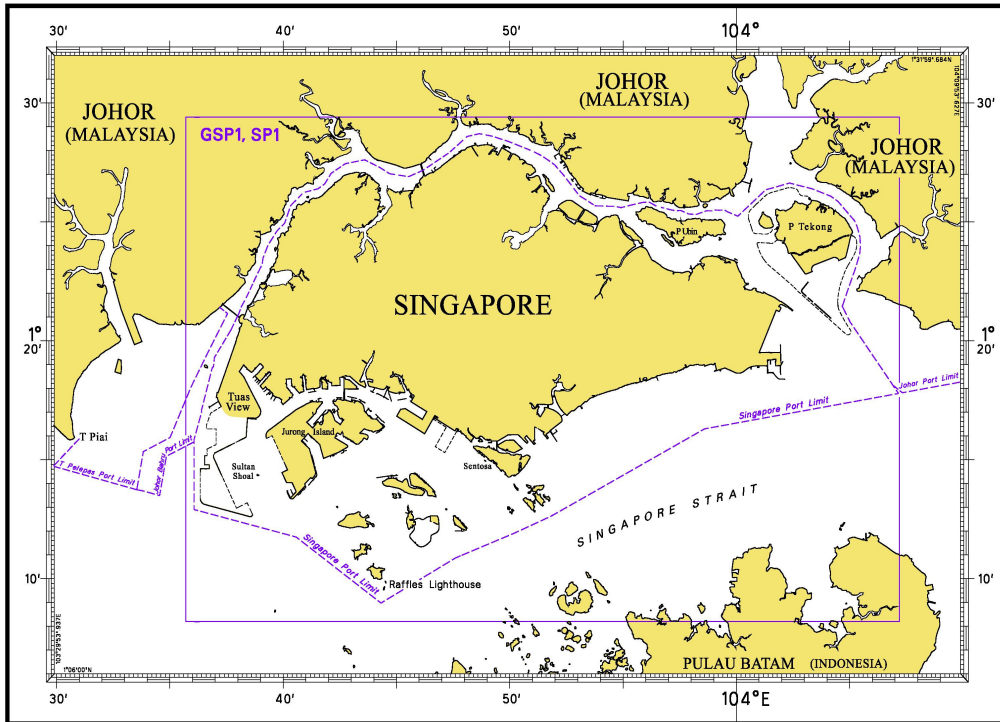
INDEX OF NOTICES

NOTICE NO.	DESCRIPTION	PAGE NO.
-	Index of Singaporean Charts	3
-	Index of Dual Badged Charts	4
-	Index of Singapore Electronic Navigational Chart (ENC)	5
-	Singapore Tide Tables 2013	6 to 8
*88	Singaporean Chart GSP1/SP1	9
89	Singaporean Chart 202	9
90T	Temporary and Preliminary Notices	10
*91	Singapore Port Marine Notices	11
92	Malaysia Marine Department Notices	11
*93	Singaporean Print-On-Demand (POD) Charts	11, 12
*94	Amendments to Publications	13
-	Reprint of Radio Navigational Warnings	14
-	Extract of Admiralty Notices to Mariners for Dual Badged Charts	15, 16
-	Singapore Electronic Navigational Chart Distributors	17
-	Chart Agents for the Maritime and Port Authority of Singapore Nautical Charts and Publications	18

* Denotes information are based on Singaporean source.

I INDEX OF CHARTS AND PUBLICATIONS

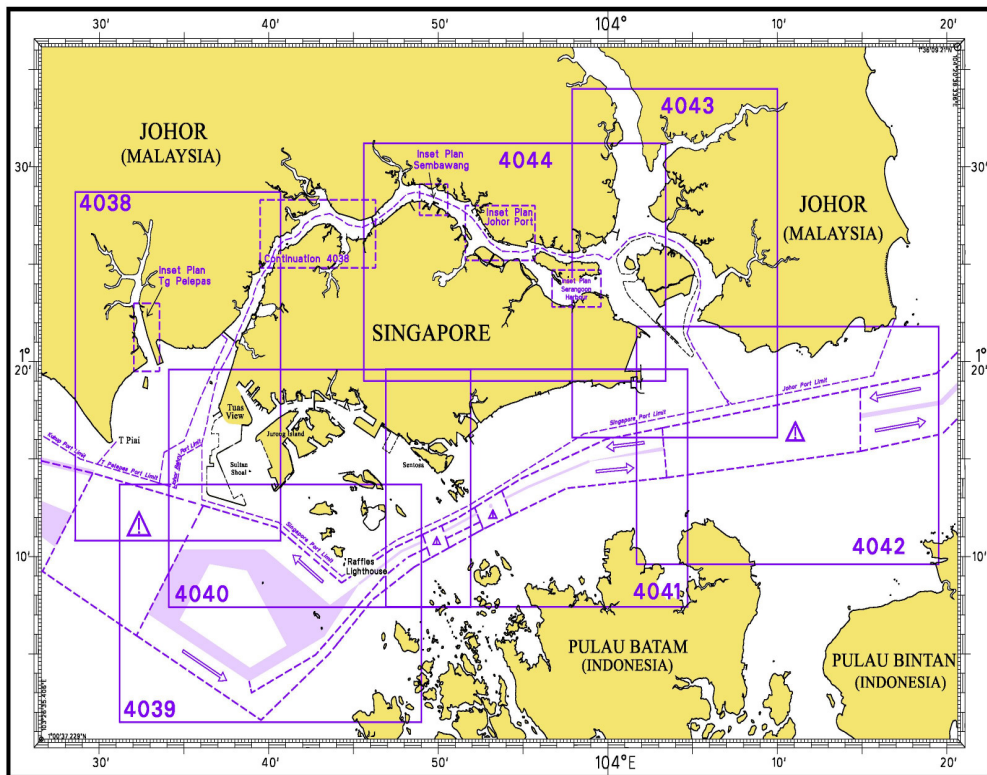
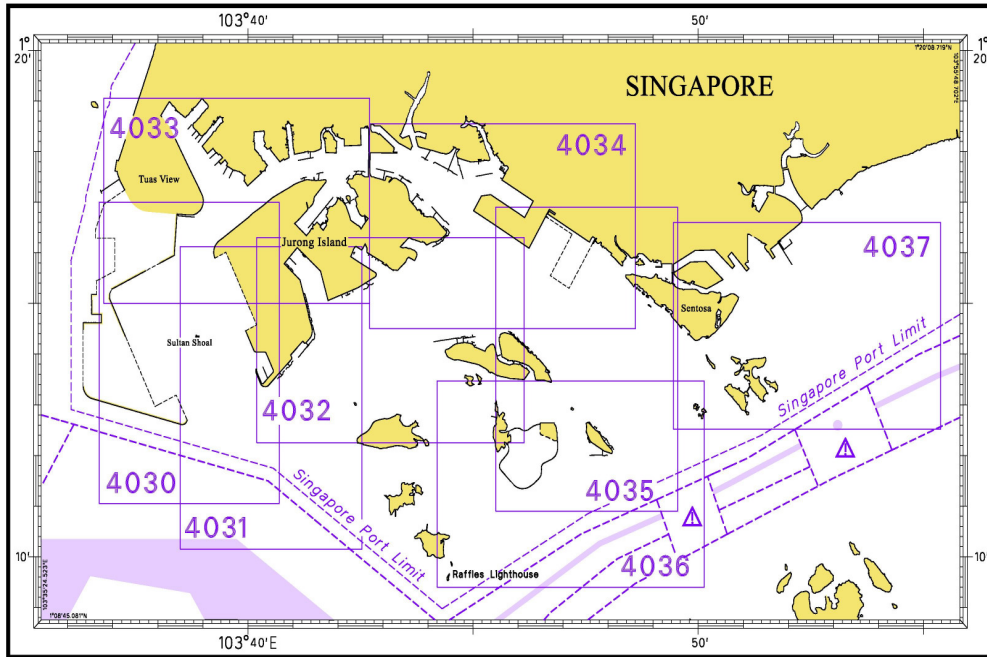
INDEX OF SINGAPOREAN CHARTS



Notes:
 Updated SINGAPOREAN Charts are available through our Print-On-Demand (POD) Chart Service. For more information, refer to Section III – Navigational Information. These charts can be purchased from our authorised Chart Agents.

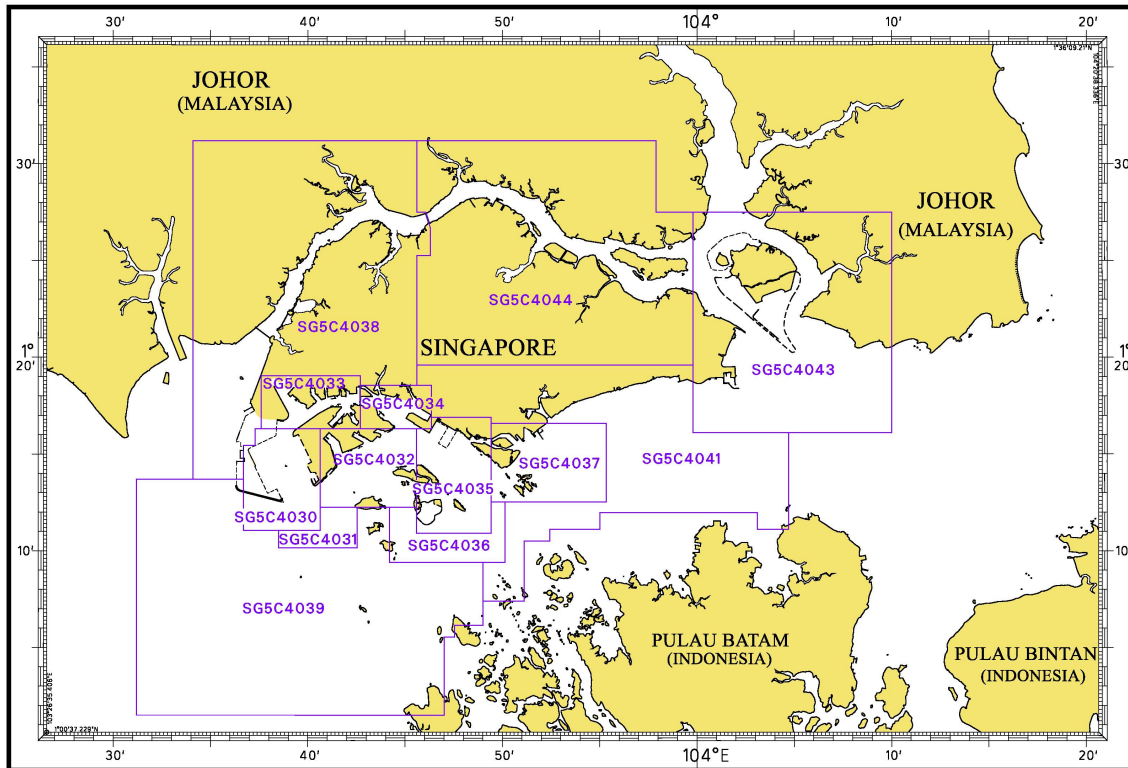
I
INDEX OF CHARTS AND PUBLICATIONS

INDEX OF DUAL BADGED CHARTS



I INDEX OF CHARTS AND PUBLICATIONS

INDEX OF SINGAPORE ELECTRONIC NAVIGATIONAL CHART (ENC)



COVERAGE OF SINGAPORE ELECTRONIC NAVIGATIONAL CHART (ENC)

ENC Name	ENC Coverage	ENC Edition
SG5C4030	West Jurong Anchorages and Temasek Fairway	5 th Edition (3/05/2012)
SG5C4031	Western Approaches to Jurong Island	5 th Edition (3/05/2012)
SG5C4032	Sinki Fairway	7 th Edition (3/05/2012)
SG5C4033	Tuas Bay, West Jurong Channel and Pesek Basin	5 th Edition (3/05/2012)
SG5C4034	East Jurong Channel, Pasir Panjang Terminal and West Keppel Fairway	10 th Edition (3/05/2012)
SG5C4035	Western Anchorages, Jong Fairway and Cruise Bay	12 th Edition (27/09/2012)
SG5C4036	Raffles Lighthouse to The Sisters	6 th Edition (3/05/2012)
SG5C4037	Keppel Harbour, Tanjong Pagar Terminal and Approaches	6 th Edition (3/05/2012)
SG5C4038	Johor Strait – Western Part	5 th Edition (3/05/2012)
SG5C4039	Western Approaches to Main Strait	5 th Edition (3/05/2012)
SG5C4041	Pulau Sebarok to Changi	6 th Edition (3/05/2012)
SG5C4043	Kuala Johor and Sungai Johor	8 th Edition (16/08/2012)
SG5C4044	Johor Strait – Eastern Part	8 th Edition (16/08/2012)

II NEW PUBLICATIONS

SINGAPORE TIDE TABLES YEAR 2013 PUBLISHED ON 1ST SEPTEMBER 2012

Summary of Publication

This 251-page book contains Tidal Height and Tidal Stream Predictions covering stations in Singapore port waters and along the Malacca and Singapore Straits.

This publication consists of 5 segments.

1. **High and Low Water Predictions** at the following stations:
 - a) Tanjong Pagar
 - b) Sembawang

2. **Hourly Tidal Height Predictions** at the following stations:
 - a) Tuas
 - b) Raffles Lighthouse
 - c) West Coast
 - d) Bukom
 - e) Tanjong Pagar
 - f) Tanah Merah
 - g) Tanjong Changi
 - h) Sembawang
 - i) Singapore Strait - Horsburgh Lighthouse

3. **Hourly Tidal Stream Predictions** at the following stations:
 - a) Main Strait – off Tuas View
 - b) Jong Fairway – Sisters Buoy
 - c) Main Strait – off Gusong Boarding Ground (formerly Gusong Beacon)
 - d) Sentosa
 - e) East Buran
 - f) Main Strait – Eastern Petroleum A
 - g) Kuala Johor – off Malang Tiga

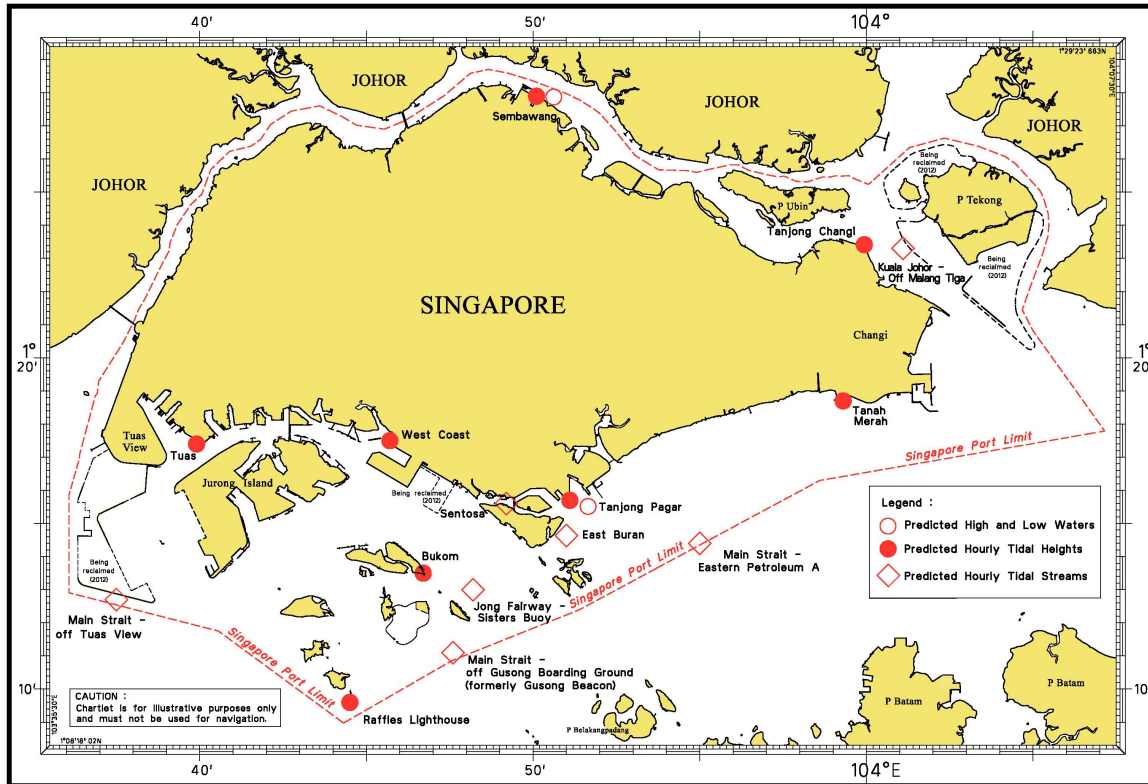
4. **Maximum and Slack Tidal Stream Predictions** at the following stations:
 - a) Malacca Strait – Off The Brothers Light
 - b) Singapore Strait – Selat Phillip
 - c) Singapore Strait – Karang Banteng (Buffalo Rock)
 - d) Singapore Strait - Horsburgh Lighthouse

5. **Malacca Strait – High and Low Water Predictions** at the following stations:
 - a) Kedah Pier, Pulau Pinang
 - b) Port Dickson
 - c) Kuala Batu Pahat

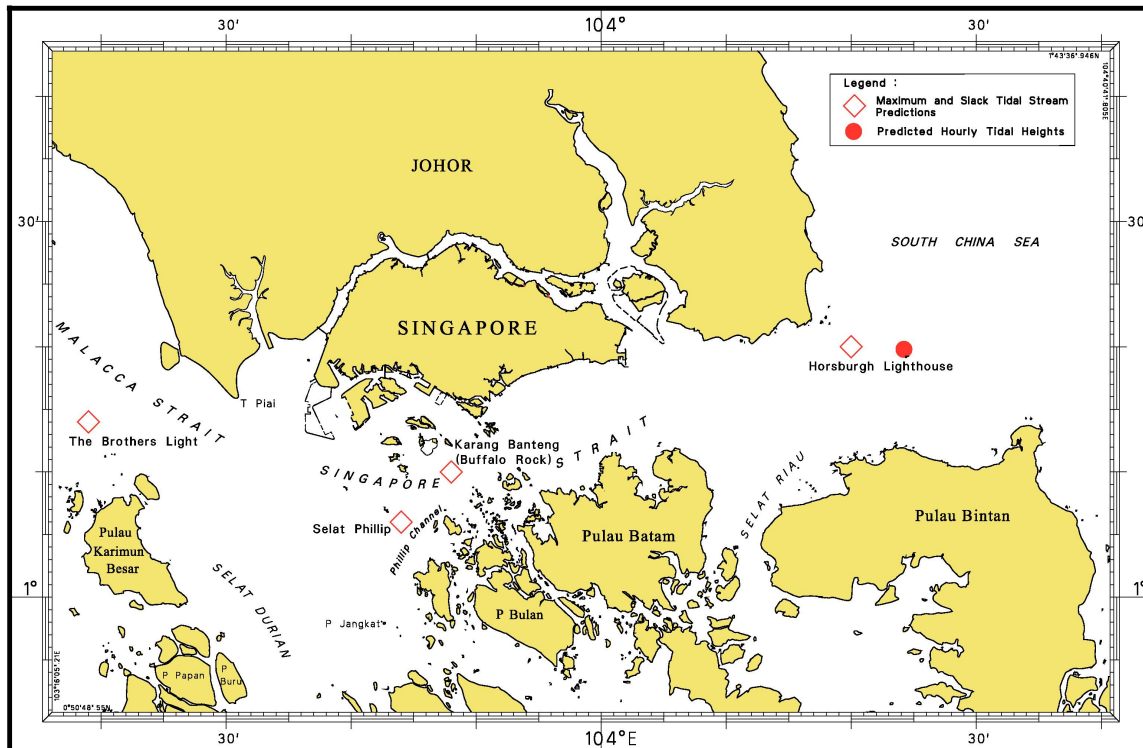
The locations of the above stations are shown in the chartlets below:

II NEW PUBLICATIONS

Tidal Prediction Stations within Singapore port waters



Tidal Prediction Stations in Malacca and Singapore Straits



II NEW PUBLICATIONS

Tidal Prediction Stations in Malacca Strait




This publication is available from the following Chart Agents:

1. DPM (Singapore) Pte Ltd
2. E.W. Limer Charts & Publications Pte Ltd
3. Motion Smith

(Please refer Page 18 for details)

II
NOTICES TO MARINERS AND CHART CORRECTIONS

GSP1/SP1	7 Ed 3/05/12 Last NM 82/2012	(HD/HE025/112/2012)	*NM 88/2012
Delete	 <i>Fl.Y.4s TMSI 1</i>		1°18'08'N 103°36'94'E
		(HD/HE025/113/2012)	
	 <i>Fl.Y.1,4s TMSI 2</i>		1°20'43'N 103°37'78'E

202	6 Ed 24/09/09 Last NM 65/2012	(Admiralty Notice 40/4439/2012)	NM 89/2012
Insert	 Iso.WR.2s11M		0°54'50'N 104°26'50'E
	 Fl(3)G.6s5M		1°04'52'N 104°08'32'E
Delete	 Iso.WR.2s13M		0°54'68'N 104°26'25'E

II
TEMPORARY AND PRELIMINARY NOTICES

**(NM 90T/2012) SOUTH EAST ASIA JAPAN CABLE SYSTEM (SJC) –
Pre-Lay Grapnel Run and Route Clearance Survey (PLGR/RC)**

Purpose : The SJC submarine cable route Pre-Lay Grapnel Run and Route Clearance survey shall be executed through Sector 7 and Sector 8; within the proximities of and in way of the East Bound Traffic Lane of the Traffic Separation Scheme (TSS) of the Singapore Strait.

Survey Vessel : 'MIRAI'

Call Sign : JM6758

Date of work : With effect from 19th November to 20th December 2012.

Duration of survey : The survey vessel will only take up to 9 working days to start and finish the PLGR/RC survey within the stipulated period.

Operating hours : Daily, 0700 to 1900 hours (including Sunday and Public Holiday).

1. The survey activity has position co-ordinates as follows :

Position	(Co-ordinates: WGS84)		Remarks (Working hours)
	Latitude (N)	Longitude (E)	
Start Point 1	1° 09·90'	103° 34·83'	daily
End Point 2	1° 05·88'	103° 31·69'	daily
Start Point 3	1° 05·30'	103° 45·26'	daily
End Point 4	1° 10·99'	103° 53·85'	daily

2. **Charts affected :** GSP1, SP1, 202, 500, 501, 4039, 4040 and 4041.

3. **Caution :** Mariners are advised
 a) to navigate with caution.
 b) to give a wide berth when approaching the survey vessel.

Source : HD/DB67/15/2012.

III NAVIGATIONAL INFORMATION

*(NM 91/2012) SINGAPORE PORT MARINE NOTICES

The following Port Marine Notices have been shortlisted, as they would be of particular interest to mariners.

These notices can be accessed directly from MPA website:

http://www.mpa.gov.sg/sites/port_and_shipping/circulars_and_notices/port_marine_notices.page

PMN No.	Subject
138/2012	Construction of Floating Sea Barrier at Sentosa Cove.
143/2012	Soil investigation works in West Jurong Channel.
144/2012	Dredging works off Sembawang Shipyard, Johor Strait.
146/2012	Repair works of Wharf 6 at Shell Terminal, Pulau Bukom.
150/2012	Soil investigation works off Tuas View.
152/2012	Dredging works off Pasir Panjang Terminal.
153/2012	Reclamation at Pasir Panjang Terminal and Pasir Panjang Wharves.

(NM 92/2012) MALAYSIA MARINE DEPARTMENT NOTICES

The following Marine Notices have been shortlisted, as they would be of particular interest to mariners.

These notices can be accessed directly from Malaysia website:

<http://www.marine.gov.my>

MN No.	Subject
56T/2012	Panjang Selatan Light Beacon construction - Malacca Strait.

*(NM 93/2012) SINGAPOREAN PRINT-ON-DEMAND (POD) CHARTS

Print-On-Demand (POD) Charts are the most up-to-date paper nautical charts printed for navigational use. These nautical charts are produced in accordance with the International Hydrographic Organisation (IHO) chart specifications. These official nautical charts are continually updated to the latest Notices to Mariners before they are printed and sold to users.

These POD Charts include GSP1, SP1, 200, 201, 202, 500, 501, 502 and 503.

BENEFITS TO OUR CUSTOMERS

Convenience

Customers need not make numerous hand corrections to the nautical charts before use. In addition the updated POD Charts are more accurate and reliable than offset printed charts with hand corrections.

III
NAVIGATIONAL INFORMATION

Clarity

Clarity in the presentation of updated information as compared to lithographic printed charts, where in some cases there are several overlapping corrections over existing information.

Coverage

The POD Charts cover the Malacca and Singapore Straits, from One Fathom Bank to Horsburgh Lighthouse.

III
AMENDMENTS TO PUBLICATIONS

***(NM 94/2012) UPDATING OF PUBLICATION "SINGAPORE PORT INFORMATION 2012/2013"**

1. Page 168

PULAU BUKOM (SHELL REFINERY) (1°14.0'N, 103°46.1'E)

Amend the following:

Single Buoy Mooring	Depth Alongside (Year Surveyed)	
	Delete	Insert
Shell SBM	24.5m (2011)	24.0m (2012)

Source: Hydrographic Department, MPA.

IV
REPRINT OF RADIO NAVIGATIONAL WARNINGS

The following Radio Navigational Warnings have been shortlisted, as they would be of particular interest to mariners.

TT022 (AMENDED 060130Z)

A COASTER VESSEL WAS REPORTED SUNK IN POSITION 01°10'80"N 103°34'00"E.
VESSELS ARE TO GIVE A WIDE BERTH AND NAVIGATE WITH CAUTION.

TT058

BUFFALO ROCK ISOLATED DANGER BUOY FL(2)5S AT POSITION 01°09'90"N 103°48'10"E . TOP MARK IS MISSING AND REPORTED UNLIT.

TT059

BATU BERHANTI BUOY FL(2)5S AT POSITION 01°11'76"N 103°52'51"E IN THE SINGAPORE STRAIT REPORTED UNLIT.

TT063

RACON DELTA BUOY Q(6)LF15S IN POSITION 01°03'78"N 103°38'77"E IS REPORTED UNLIT.

TT173

VESSELS IN EAST JOHOR STRAIT ARE ADVISED TO NAVIGATE WITH CAUTION WHEN NEAR THE PROJECT AREAS OFF PULAU TEKONG, CHANGI AND MALANG PAPAN AS SHALLOW WATER AREAS EXIST. VESSELS ARE ADVISED TO KEEP LOOKOUT FOR TUGS AND BARGES NAVIGATING NEAR THE PROJECT AREAS AND PASSENGER FERRIES CROSSING BETWEEN CHANGI AND PULAU TEKONG AND VICINITY OF PASIR GUDANG.

TT931

VESSELS NAVIGATING IN THE SINGAPORE STRAIT ARE REQUESTED NOT TO DIRECT THEIR HIGH INTENSITY SEARCHLIGHTS SKYWARD IN THE VICINITY OF CHANGI AIRPORT TO AVOID DISRUPTION TO AIR NAVIGATION.

TT961

VESSELS INTENDING TO CROSS THE TRAFFIC SEPARATION SCHEME(TSS) OR PRECAUTIONARY AREAS IN THE SINGAPORE STRAIT DURING THE HOURS OF DARKNESS ARE RECOMMENDED TO DISPLAY THE NIGHT SIGNALS CONSISTING OF 3 ALL-ROUND GREEN LIGHTS IN A VERTICAL LINE WITH EFFECT FROM 1ST JULY 2011 AT 0000UTC (0800SGT) AS DETAILED IN MARITIME AND PORT AUTHORITY OF SINGAPORE'S PORT MARINE CIRCULAR, 02 OF 2011 DATED 30 MAY 2011.

ISSUED BY SINGAPORE PORT OPERATIONS CONTROL CENTRE (as at 21st October 2012)

V
**EXTRACT OF ADMIRALTY NOTICES TO MARINERS
 FOR DUAL BADGED CHARTS**

These notices can also be accessed directly from UKHO Website:

<http://www.ukho.gov.uk/ProductsandServices/MaritimeSafety/Pages/NMPublic.aspx>

**4803* SINGAPORE – Jurong Island – Temasek Fairway and Sinki Fairway – Wreck. Maritime limits. Beacon.
 Light-beacon. Automatic Identification System. Buoy.**

Light List Vol. F, 2012/13, 1685.78

ALRS Vol. 2, 2012/13: (42/12)

Source: Maritime and Port Authority of Singapore

Chart 4030 [*previous update 4043/12*] WGS84 DATUM


Insert	 Wk		1° 14'·965N., 103° 38'·943E.
	maritime limit, pecked line, joining:		1° 14'·410N., 103° 39'·974E. (shore)
		(a)	1° 14'·318N., 103° 39'·783E. (existing limit)
Delete	former maritime limit, pecked line, joining:		(a) above 1° 14'·011N., 103° 39'·928E. 1° 13'·960N., 103° 40'·134E. 1° 13'·960N., 103° 40'·305E. 1° 13'·803N., 103° 40'·380E. 1° 13'·852N., 103° 40'·484E. (shore)

Chart 4031 [*previous update 2951/12*] WGS84 DATUM







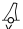
Replace	 Banyan with  FI(2)10s11m5M Banyan with	(a)	1° 13'·345N., 103° 41'·583E.
	Radar reflector symbol		
Insert	Automatic Identification System, AIS , at light-beacon	(a)	above
	 Wk		
	maritime limit, pecked line, joining:	(b)	1° 14'·965N., 103° 38'·943E. 1° 14'·410N., 103° 39'·974E. (shore) 1° 14'·318N., 103° 39'·783E. (existing limit)
Delete	former maritime limit, pecked line, joining:		(b) above 1° 14'·011N., 103° 39'·928E. 1° 13'·960N., 103° 40'·134E. 1° 13'·960N., 103° 40'·305E. 1° 13'·803N., 103° 40'·380E. 1° 13'·852N., 103° 40'·484E. (shore)
	 Fl.Y.5s Banyan , close S of:	(a)	above

Chart 4032 [*previous update 3486/12*] WGS84 DATUM

Replace	 Banyan with  FI(2)10s11m5M Banyan with	(a)	1° 13'·345N., 103° 41'·583E.
	Radar reflector symbol		
Insert	Automatic Identification System, AIS , at light-beacon	(a)	above
Delete	 Fl.Y.5s Banyan , close S of:	(a)	above

V
**EXTRACT OF ADMIRALTY NOTICES TO MARINERS
 FOR DUAL BADGED CHARTS**

4803* SINGAPORE – Jurong Island – Temasek Fairway and Sinki Fairway – Wreck. Maritime limits. Beacon. Light-beacon. Automatic Identification System. Buoy. (continued)

Chart 4038 [*previous update 2365/12*] WGS84 DATUM

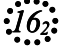
Insert	 Wk maritime limit, pecked line, joining:		1° 14'·97N., 103° 38'·94E. 1° 14'·41N., 103° 39'·97E. (shore)
		(a)	1° 14'·32N., 103° 39'·78E. (existing limit)
Delete	former maritime limit, pecked line, joining:		(a) above 1° 14'·01N., 103° 39'·93E. 1° 13'·96N., 103° 40'·13E. 1° 13'·96N., 103° 40'·30E. 1° 13'·80N., 103° 40'·38E. 1° 13'·85N., 103° 40'·48E. (shore)

Chart 4039 [*previous update 2951/12*] WGS84 DATUM



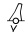



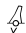
Replace	 Banyan with  Fl(2)10s11m5M Banyan with Radar reflector symbol	(a)	1° 13'·35N., 103° 41'·58E.
Insert	Automatic Identification System, AIS , at light-beacon		(a) above
Delete	 <i>Fl.Y.5s</i> Banyan, close ESE of:		(a) above

Chart 4040 [*previous update 3486/12*] WGS84 DATUM

Replace	 Banyan with  Fl(2)10s11m5M Banyan with Radar reflector symbol	(a)	1° 13'·35N., 103° 41'·58E.
Insert	Automatic Identification System, AIS , at light-beacon		(a) above
	 Wk maritime limit, pecked line, joining:		1° 14'·97N., 103° 38'·94E. 1° 14'·41N., 103° 39'·97E. (shore)
		(b)	1° 14'·32N., 103° 39'·78E. (existing limit)
Delete	former maritime limit, pecked line, joining:		(b) above 1° 14'·01N., 103° 39'·93E. 1° 13'·96N., 103° 40'·13E. 1° 13'·96N., 103° 40'·30E. 1° 13'·80N., 103° 40'·38E. 1° 13'·85N., 103° 40'·48E. (shore)
	 <i>Fl.Y.5s</i> Banyan, close ESE of:		(a) above

 Updated to Admiralty Notices to Mariners Edition No. 43 of 2012 dated 25th October 2012.

MPA ENC DISTRIBUTORS

CONTACT PERSON/ DESIGNATION	ADDRESS	TELEPHONE/FAX NO./EMAIL/WEBSITE
ChartWorld GmbH	Ruhrstrasse 90, 22761 Hamburg, Germany	Tel. No.: +49 40 853 58 6942 Fax No.: +49 40 853 58 6949 Email: sales@chartworld.com
ChartWorld Asia Pacific Pte Ltd.	Frontech Centre 07-01, 15 Jalan Kilang Barat, Singapore 159357	Tel No.: +65 65133500 Website : http://www.chartworld.com
DPM (Singapore) Pte Ltd	1 Maritime Square, #09-72 HarbourFront Centre, Singapore 099253	Tel. No.: +65 6270 4060 Fax No.: +65 6276 3858 Email: sales@dpmsingapore.com.sg Website: http://www.dpmsingapore.com.sg
Maritime Information Systems (MARIS)	52, Telok Blangah Road #01-06, Telok Blangah House, Singapore 058809	Tel. No.: +65 6276 1472 Fax No.: +65 6276 1473 Email: : support@maris.sg Website: http://www.maris.no
Maritime Information Systems AS (MARIS)	Danholmen 25, 3128 Notteroy, Norway	Tel. No.: +47 33 30 42 50 Fax No.: +47 33 30 42 51 Email: : sales@maris.no Website: http://www.maris.no
Motion Smith	15 Jalan Kilang Barat #08-01/05 Frontech Centre, Singapore 159357	Tel. No.: +65 6220 5098 Fax No.: +65 6225 4902 Email: sales@motsmith.com Website: http://www.motsmith.com
Transas Marine Pacific Pte Ltd	Cyber Centre 16 & 18 Jalan Kilang Barat Singapore 159358	Tel. No.: +65 6271 0200 Fax No.: +65 6271 7300 Email: dominic@transas.com.sg Website: http://www.transas.com.sg
Vector Services Pte Ltd	196 Pandan Loop, #06-29 Pantech Business Hub Singapore 128384	Tel. No.: +65 6777 3602 Fax No.: +65 6777 9203 Email: kwchoy@pacific.net.sg
Japan Hydrographic Association Electronic Charts Division	Daiichi Sogo Bldg, 6F 1-6-6, Hanedakuko, Ota-ku Tokyo 144-0041, Japan	Tel. No.: +81 3 5708 7093 Fax No.: +81 3 5708 7094 Email: shimizu-6kj@jha.jp Website: http://www.jha.or.jp/en/jha/
Jeppesen Norway AS	P.O Box 212 , N-4371 Egersund, Norway	Tel No.: +47 51 46 4700 Fax No: +47 51 46 4701 Email: license.marine@jeppesen.com Website : http://www.jeppesen.com/marine
PRIMAR STAVANGER	Lervigsveien 36, P.O Box 60, N-4001 Stavanger, Norway	Tel. No.: +47 51 93 9500 Fax No.: +47 51 93 9501 Email: sales@ecc.no Website : http://www.primar.no
The United Kingdom Hydrographic Office	Admiralty Way, Taunton, Somerset, TA1 2DN United Kingdom	Tel. No.: +44 1823 33 7900 Fax No.: +44 1823 28 4077 Emails: ENC.SalesReports@ukho.gov.uk Website: http://www.ukho.gov.uk

Chart Agents for the Maritime and Port Authority of Singapore
Nautical Charts and Publications

Please approach any of the appointed chart agent to purchase the Singapore Nautical Charts and Publications.

CHART AGENT	ADDRESS	TELEPHONE/FAX NO./EMAIL/WEBSITE
DPM (Singapore) Pte Ltd	1 Maritime Square, #09-72 HarbourFront Centre, Singapore 099253	Tel. No.: +65 6270 4060 Fax No.: +65 6276 3858 Email: sales@dpmsingapore.com.sg Website: http://www.dpmsingapore.com.sg
E.W. Liner Charts & Publications Pte Ltd	102F, Pasir Panjang Road, #08-01, Citilink Warehouse Complex, Singapore 118530	Tel. No.: +65 6323 0773 Fax No.: +65 6323 0775 Email: ewliner@singnet.com.sg Website: http://www.ewliner.com
Motion Smith	15 Jalan Kilang Barat #08-01/05 Frontech Centre Singapore 159357	Tel. No.: +65 6220 5098 (After office hours:+65 8163 9993) Fax No.: +65 6225 4902 Email: sales@motsmith.com Website: http://www.motsmith.com

HYDROGRAPHIC NOTE - Instructions

1. Mariners are requested to notify the Chief Hydrographer, Maritime and Port Authority of Singapore, when new or suspected dangers to navigation are discovered, changes are observed in aids to navigation or where corrections to nautical publications may be necessary. Reports, which cannot be confirmed or are lacking in certain details should not be withheld.
2. Any ambiguities of time, positioning and depth should be stressed and any firm expectation of being able to check the information provided on a following voyage should be mentioned.
3. Mariners using satellite position fixing systems, eg. GPS, should provide details of equipment and datum used (where applicable). Where bearings (true or magnetic) are taken visually or by radar to fix a position, it should include more than two objects in order to provide a check on its accuracy. A position may also be defined by bearing and distance from a conspicuous object eg. beacon, lighthouse etc.
4. The note should include a tracing or a digital image of the chart used and the details should be clearly marked.
5. Echo sounders frequently register greater depths than the advertised maximum depth for the equipment, eg. a trace appearing at 50 metres may be in fact be 550 metres or even 1050 metres for equipment whose maximum depth is 500 metres. Erroneous depths caused by 2nd transmission error can usually be recognised by the following:
 - (a) the tracing being weaker than normal for the depth registered,
 - (b) the trace appearing to pass through the transmission line,
 - (c) the feathery nature of the trace.
6. Upon receipt of a hydrographic note, a Notice to Mariners may be issued. The sender's vessel or name is quoted as the source unless the same information is also received in foreign Notices to Mariners.
7. Reports of shoals, uncharted dangers and defects in aids to navigation may also be made to the appropriate Singapore Port Operations Control Centre on VHF Channels 10, 12, 14, 68 or 73.

HYDROGRAPHIC NOTE

To:

Chief Hydrographer
Maritime and Port Authority of Singapore
460 Alexandra Road PSA Building #20-00
Singapore 119963

Tel : (65) 6375 1227
Fax : (65) 6278 7646
Email : hydrographic@mpa.gov.sg

Sender's Contact Details :

Date :

Name of Vessel :

Address of Sender :

Tel : Fax :

Email :

Nature of Observation :

General Location :

Subject :

Position : Lat. Long.

Charts Used :

Date & Time of Observation :

Details :

.....

.....

.....

Attachment :

Equipment Used :

Type of Position Fixing : GPS / DGPS Others :

Type of Echo Sounder :

Name and Signature :

Ship's/Company's Stamp :