



SINGAPOREAN NOTICES TO MARINERS

SECTION	CONTENT	Page
I	Index of Charts & Publications	1
II	New Publications	9
	Notices to Mariners and Chart Corrections	12
	Temporary and Preliminary Notices	13
III	Navigational Information	15
	Amendments to Publications	16
IV	Reprint of Radio Navigational Warnings	17
V	Extract of Admiralty Notices to Mariners for Dual-Badged Charts	18

The monthly Notices to Mariners contain corrective information affecting charts published by the Hydrographic Department, Maritime and Port Authority of Singapore. The information contained in these Notices should be updated on the charts affected. Notices under Section II apply only to the particular Singaporean Chart(s) indicated.

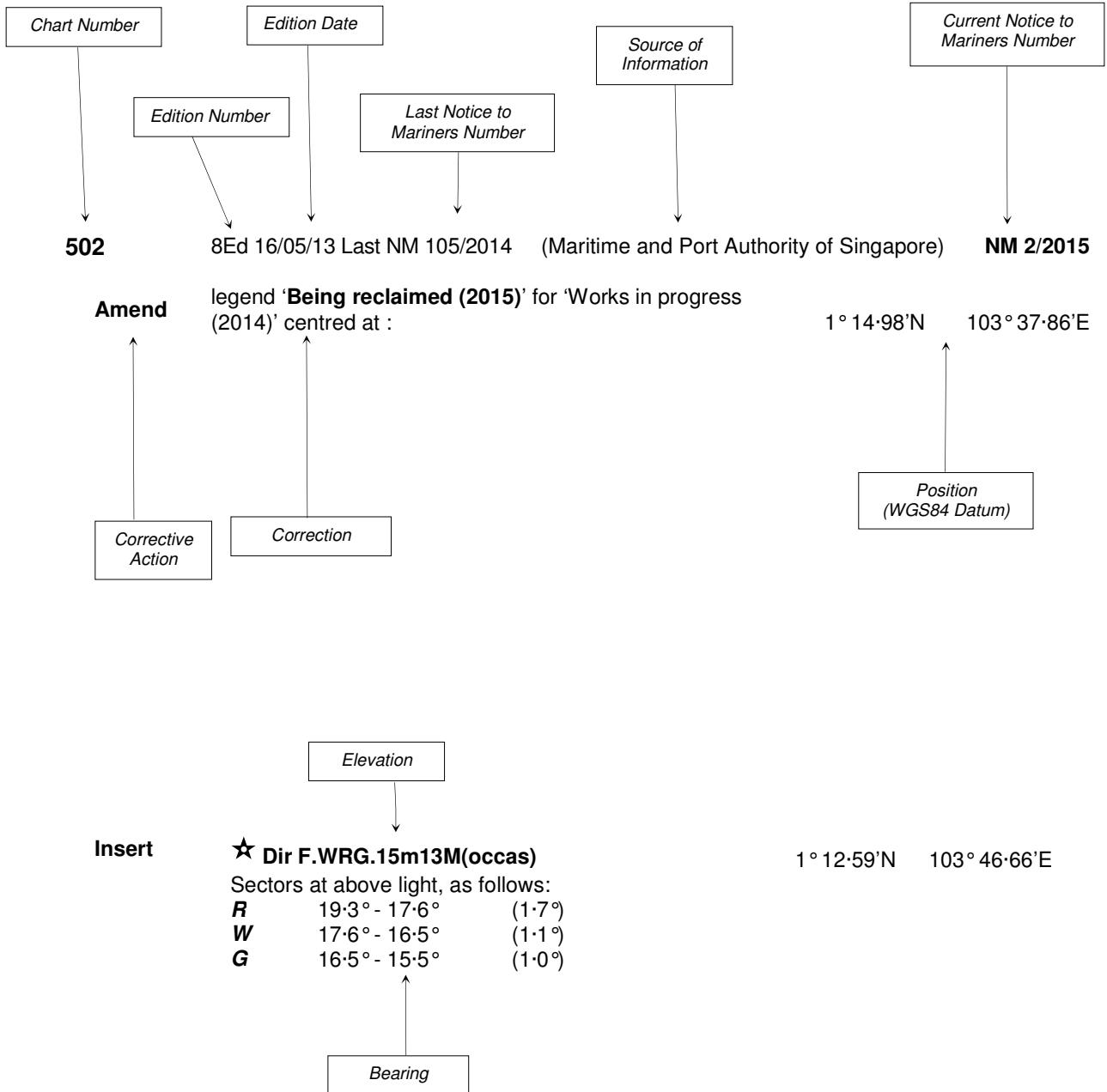
Mariners are requested to notify the Chief Hydrographer, Maritime and Port Authority of Singapore, immediately on the discovery of new dangers or suspected dangers to navigation and of changes or defects in aids to navigation. See Hydrographic Note on back page.

The monthly Singaporean Notices to Mariners can be accessed directly from the MPA website:
[http://www.mpa.gov.sg/sites/port_and_shipping/circulars_and_notices/singapore_notices_to_mariners\(ntm\).page](http://www.mpa.gov.sg/sites/port_and_shipping/circulars_and_notices/singapore_notices_to_mariners(ntm).page)

Hydrographic Department
Maritime and Port Authority of Singapore
7B Keppel Road
#20-00 Tanjong Pagar Complex
Singapore 089055
Tel: (65) 6325 2027
Fax: (65) 6226 1076
Email: hydrographic@mpa.gov.sg

EXPLANATION OF FORMAT

The elements of a typical chart correction are explained below.



Notes:

- Notice to Mariners number followed by:
T indicates a Temporary Notice (eg. **NM 3T/2015**).
P indicates a Preliminary Notice (eg. **NM 4P/2015**).
- Bearings are true reckoned clockwise from 000° to 359°; those relating to lights are from seaward.
- Heights and elevations are above Mean High Water Springs.

I
INDEX OF CHARTS AND PUBLICATIONS

INDEX OF AFFECTED CHARTS

DESCRIPTION	NOTICE NO.	PAGE NO.
Index of Singaporean Charts	-	3, 4
Index of Dual-Badged Charts	-	5 to 7
Index of Singapore Electronic Navigational Chart (ENC)	-	8
Singapore Tide Tables Year 2016	-	9 to 11
Singaporean Chart GSP1/SP1	*91, 92	12
Singaporean Chart 502	*91, 92	12
Temporary and Preliminary Notices	*93P, *94P	13, 14
Singapore Port Marine Notices	*95	15
Singaporean Print-On-Demand (POD) Charts	*96	15
Amendments to Publications	*97	16
Reprint of Radio Navigational Warnings	-	17
Extract of Admiralty Notices to Mariners for Dual-Badged Charts	-	18 to 23
Singapore Electronic Navigational Chart (ENC) Distributors	-	24
Chart Distributors for the Maritime and Port Authority of Singapore Nautical Charts and Publications	-	25

*Source: Maritime and Port Authority of Singapore

I
INDEX OF CHARTS AND PUBLICATIONS

INDEX OF NOTICES

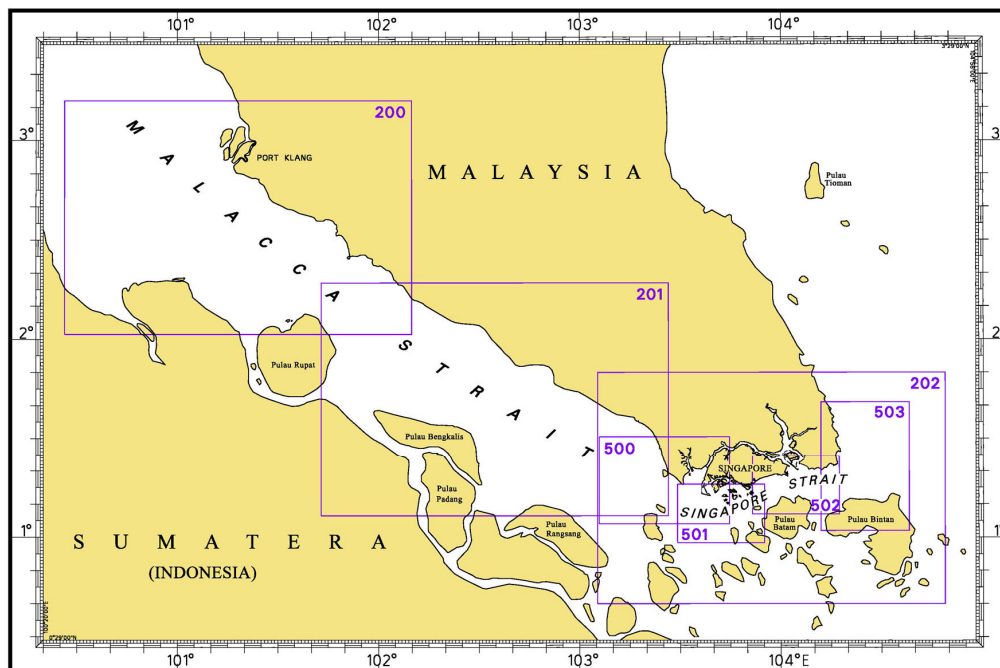
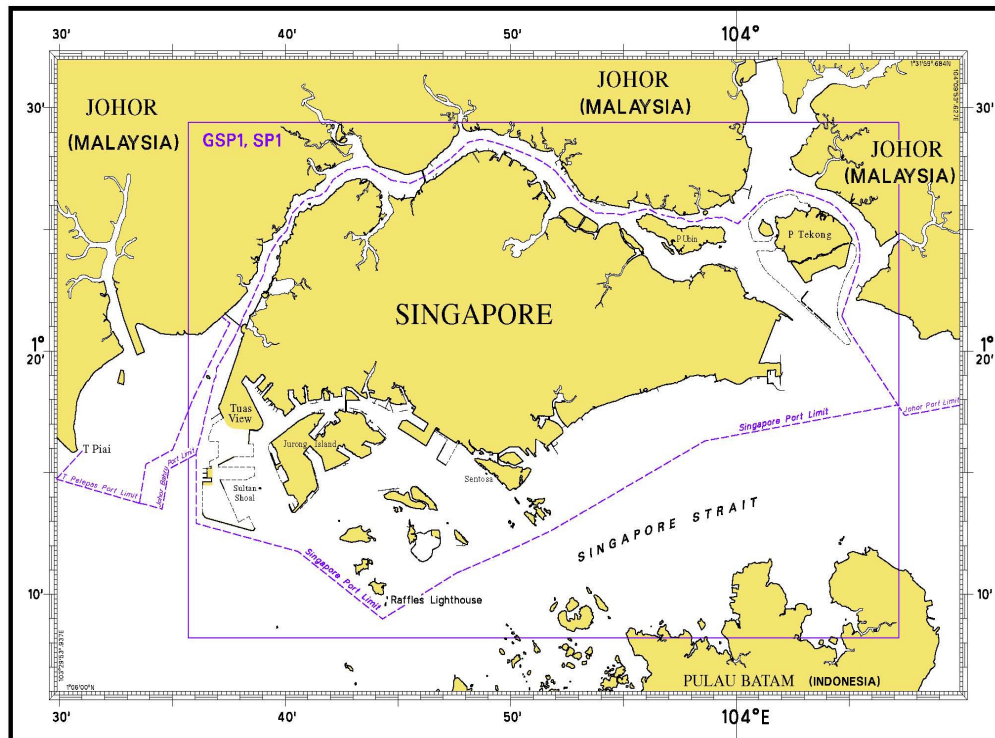
NOTICE NO.	DESCRIPTION	PAGE NO.
-	Index of Singaporean Charts	3, 4
-	Index of Dual-Badged Charts	5 to 7
-	Index of Singapore Electronic Navigational Chart (ENC)	8
-	Singapore Tide Tables 2016	9 to 11
*91, 92	Singaporean Chart GSP1/SP1	12
*91, 92	Singaporean Chart 502	12
*93P, *94P	Temporary and Preliminary Notices	13, 14
*95	Singapore Port Marine Notices	15
*96	Singaporean Print-On-Demand (POD) Charts	15
*97	Amendments to Publications	16
-	Reprint of Radio Navigational Warnings	17
-	Extract of Admiralty Notices to Mariners for Dual-Badged Charts	18 to 23
-	Singapore Electronic Navigational Chart (ENC) Distributors	24
-	Chart Distributors for the Maritime and Port Authority of Singapore Nautical Charts	25

* Source: Maritime and Port Authority of Singapore

I

INDEX OF CHARTS AND PUBLICATIONS

INDEX OF SINGAPOREAN CHARTS



Notes:

Updated Singaporean Charts are available through our Print-On-Demand (POD) Chart Service. For more information, refer to Section III – Navigational Information. These charts can be purchased from our Chart Distributors.

I
INDEX OF CHARTS AND PUBLICATIONS

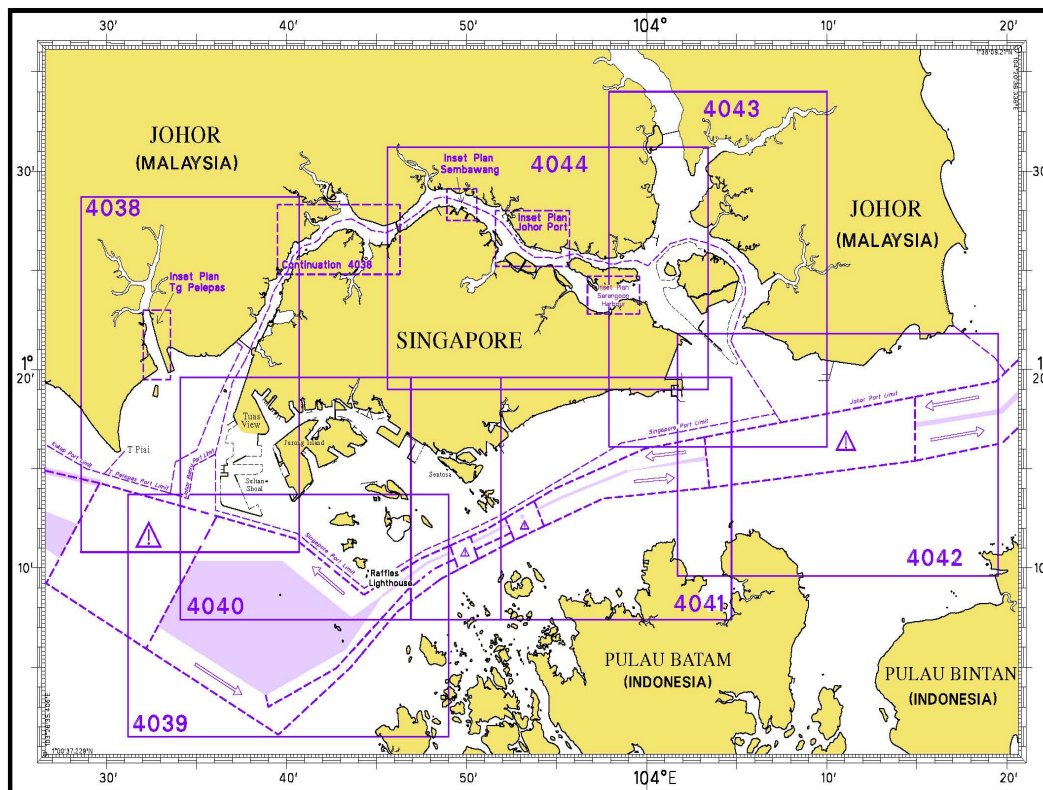
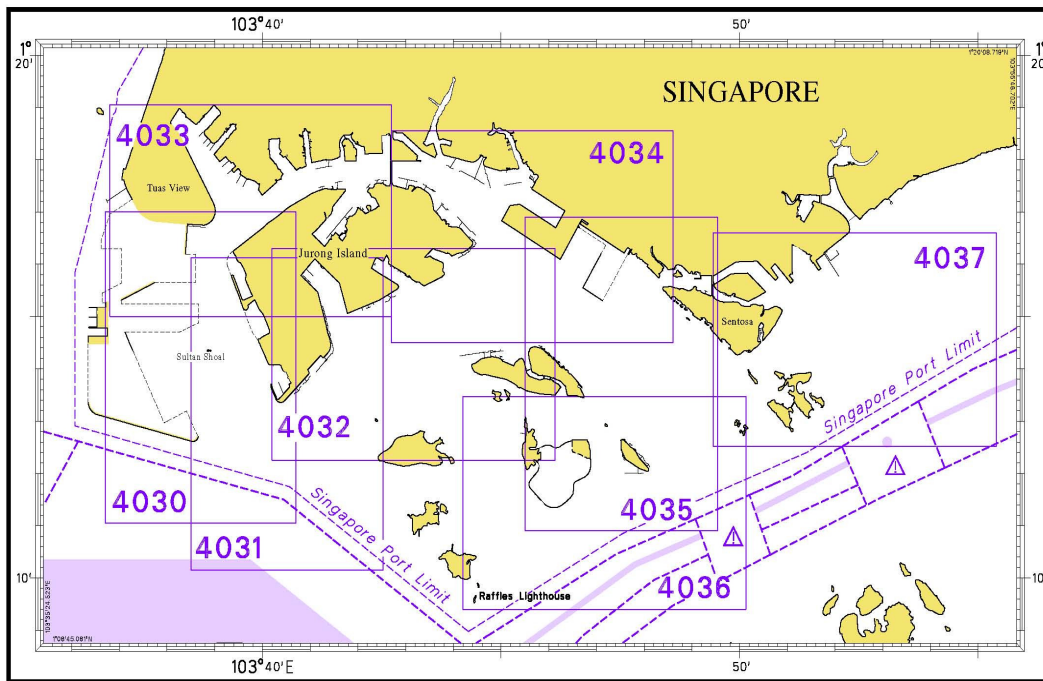
SINGAPOREAN CHARTS

Chart No.	Chart Title	Scale 1:	Date Published of Latest Edition
GSP1	Anchorage and Aids to Navigation (with Area Reference)	60 000	02/03/2015
SP1	Anchorage and Aids to Navigation	60 000	02/03/2015
200	Malacca Strait - Port Klang to Tanjung Keling	200 000	01/09/2015
201	Malacca Strait - Tanjung Keling to Western Entrance of Singapore Strait	200 000	15/08/2014
202	Singapore Strait	200 000	26/09/2013
500	Malacca and Singapore Straits – Pulau Pisang to Raffles Lighthouse	75 000	26/09/2013
501	Singapore Strait – Western Part	50 000	01/09/2015
502	Singapore Strait - Eastern Part	50 000	01/09/2015
503	South China Sea - Eastern Approaches and Entrance to Singapore Strait	75 000	15/08/2014
-	Charts for Small Craft – Singapore Strait & Adjacent Waterways	10 000 to 200 000	02/01/2015
1	<p>Symbols Abbreviations Terms and S-57 Objects used on Singapore Nautical and Electronic Navigational Charts.</p> <p>Available at MPA website http://www.mpa.gov.sg/sites/global_navigation/publications/chart1.page</p>	-	28/07/2011

I

INDEX OF CHARTS AND PUBLICATIONS

INDEX OF DUAL-BADGED CHARTS



I
INDEX OF CHARTS AND PUBLICATIONS

DUAL- BADGED CHARTS

Chart No.	Chart Title	Scale 1:	Date Published of Latest Edition
4030	Port of Singapore West Jurong Anchorages and Temasek Fairway	10 000	07/05/2015
4031	Port of Singapore Western Approaches to Jurong Island	10 000	07/05/2015
4032	Port of Singapore Sinki Fairway	10 000	15/05/2014
4033	Port of Singapore Tuas Bay, West Jurong Channel and Pesek Basin	10 000	07/05/2015
4034	Port of Singapore East Jurong Channel, Pasir Panjang Terminal and West Keppel Fairway	10 000	28/05/2015
4035	Port of Singapore Western Anchorages, Jong Fairway and Cruise Bay	10 000	28/05/2015
4036	Port of Singapore Raffles Lighthouse to The Sisters	10 000	28/05/2015
4037	Port of Singapore Keppel Harbour, Tanjong Pagar Terminal and Approaches	10 000	28/05/2015
4038	Malaysia and Singapore Johor Strait – Western Part	30 000	26/09/2013
4039	Indonesia, Singapore and Malaysia Western Approaches to Main Strait	30 000	24/04/2014
4040	Singapore, Indonesia and Malaysia Tuas View to Pulau Sakijang Bendera (S. John's Island)	30 000	27/08/2015
4041	Singapore and Indonesia Pulau Sebarok to Changi	30 000	27/08/2015

I
INDEX OF CHARTS AND PUBLICATIONS

DUAL- BADGED CHARTS

Chart No.	Chart Title	Scale 1:	Date Published of Latest Edition
4042	Indonesia, Malaysia and Singapore Changi to Pulau Mungging and Tanjung Buntan to Tanjung Tondang	30 000	24/04/2014
4043	Malaysia and Singapore Kuala Johor and Sungai Johor	30 000	09/04/2015
4044	Singapore and Malaysia Johor Strait - Eastern Part	30 000	09/04/2015

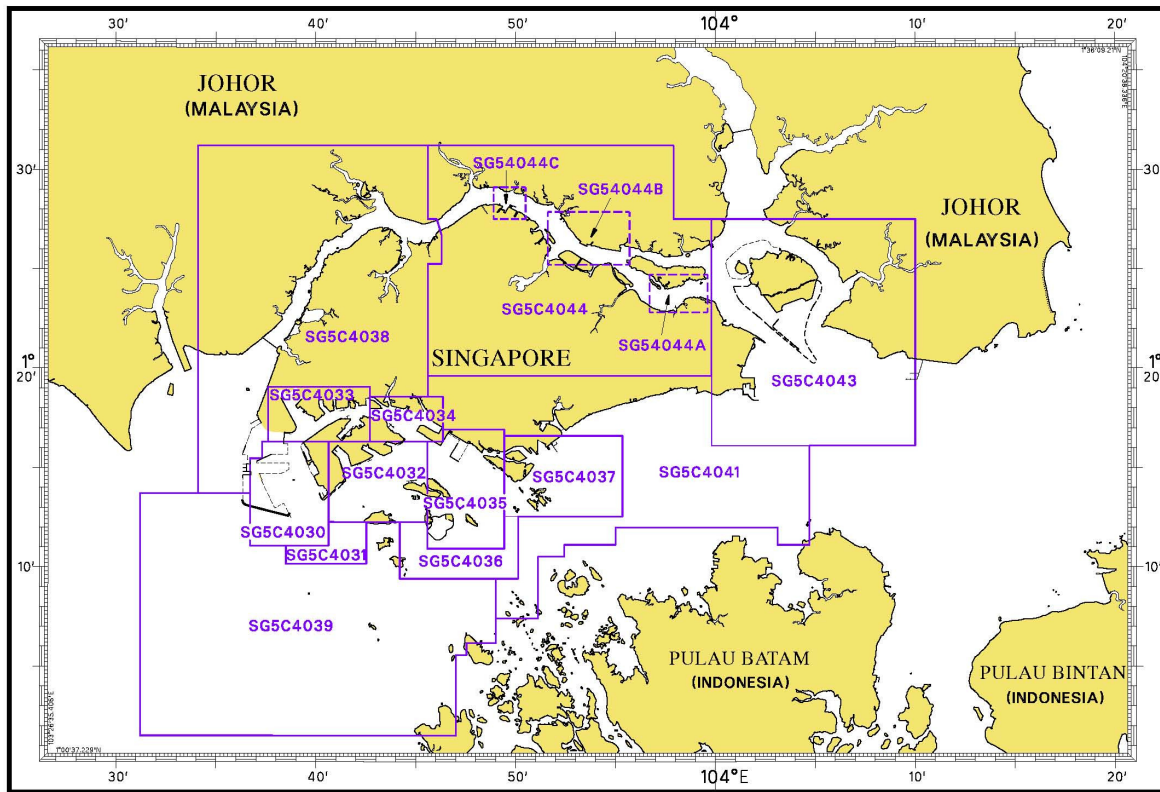
SINGAPOREAN PUBLICATIONS

Item	Title
1	Singapore Tide Tables Year 2015
2	Singapore Port Information 2014/2015
3	Singapore Tide Tables Year 2016

I

INDEX OF CHARTS AND PUBLICATIONS

INDEX OF SINGAPORE ELECTRONIC NAVIGATIONAL CHART (ENC)



SINGAPORE ELECTRONIC NAVIGATIONAL CHART (ENC)

ENC Name	ENC Coverage	ENC Edition
SG5C4030	West Jurong Anchorages and Temasek Fairway	8 th Edition (7/05/2015)
SG5C4031	Western Approaches to Jurong Island	7 th Edition (1/09/2014)
SG5C4032	Sinki Fairway	10 th Edition (7/05/2015)
SG5C4033	Tuas Bay, West Jurong Channel and Pesek Basin	8 th Edition (7/05/2015)
SG5C4034	East Jurong Channel, Pasir Panjang Terminal and West Keppel Fairway	13 th Edition (28/05/2015)
SG5C4035	Western Anchorages, Jong Fairway and Cruise Bay	16 th Edition (28/05/2015)
SG5C4036	Raffles Lighthouse to The Sisters	9 th Edition (28/05/2015)
SG5C4037	Keppel Harbour, Tanjong Pagar Terminal and Approaches	9 th Edition (28/05/2015)
SG5C4038	Johor Strait – Western Part	8 th Edition (27/08/2015)
SG5C4039	Western Approaches to Main Strait	8 th Edition (27/08/2015)
SG5C4041	Pulau Sebarok to Changi	9 th Edition (27/08/2015)
SG5C4043	Kuala Johor	11 th Edition (9/04/2015)
SG5C4044	Johor Strait – Eastern Part	11 th Edition (9/04/2015)
SG54044A	Serangoon Harbour	2 nd Edition (9/04/2015)
SG54044B	Pelabuhan Johor (Johor Port)	2 nd Edition (9/04/2015)
SG54044C	Sembawang	2 nd Edition (9/04/2015)

The latest edition of the Singapore ENC covering Singapore Waters and their approaches can be found in our monthly Singaporean Notices to Mariners at MPA website: [http://www.mpa.gov.sg/sites/port_and_shipping/port/charts_tidal_information_and_hydrography/charts/singapore_electronic_navigational_chart\(enc\).page](http://www.mpa.gov.sg/sites/port_and_shipping/port/charts_tidal_information_and_hydrography/charts/singapore_electronic_navigational_chart(enc).page)

II NEW PUBLICATION

SINGAPORE TIDE TABLES YEAR 2016 PUBLISHED ON 9TH SEPTEMBER 2015

Summary of Publication

This publication contains Tidal Height and Tidal Stream Predictions covering stations in Singapore Port Waters and along the Straits of Malacca and Singapore.

This publication consists of 5 segments.

1. **High and Low Water Predictions** at the following stations:
 - a) Tanjong Pagar
 - b) Sembawang

2. **Hourly Tidal Height Predictions** at the following stations:
 - a) West Tuas
 - b) Sultan Shoal Lighthouse
 - c) Raffles Lighthouse
 - d) West Coast
 - e) Bukom
 - f) Tanjong Pagar
 - g) Tanah Merah
 - h) Tanjong Changi
 - i) Sembawang
 - j) Singapore Strait – Horsburgh Lighthouse

3. **Hourly Tidal Stream Predictions** at the following stations:
 - a) Main Strait – off Tuas View
 - b) Sinki Fairway – Banyan
 - c) Jong Fairway – off Sisters Buoy
 - d) Main Strait – off Shell SBM Buoy
 - e) Sentosa – off Cruise Bay
 - f) East Buran
 - g) Main Strait – Eastern Petroleum A
 - h) Kuala Johor – off Malang Tiga

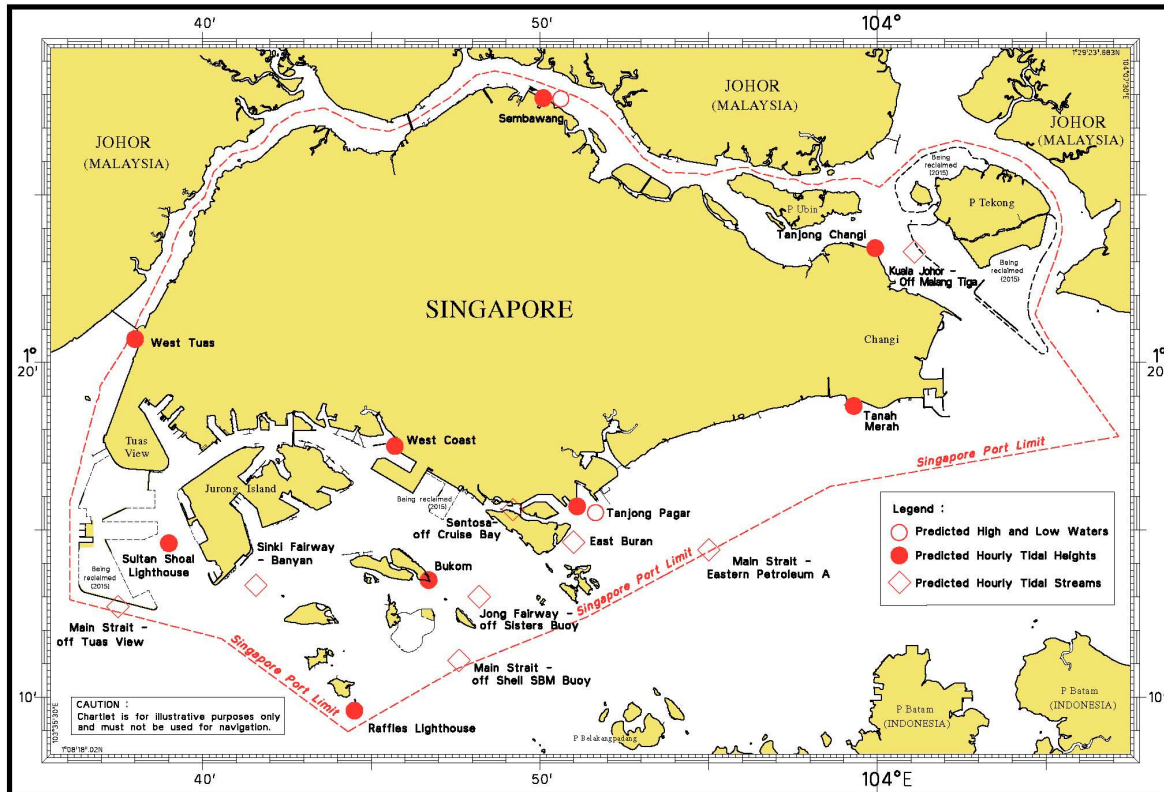
4. **Maximum and Slack Tidal Stream Predictions** at the following stations:
 - a) Malacca Strait – off Pulau Iyu Kecil Light
 - b) Singapore Strait – Selat Phillip
 - c) Singapore Strait – Karang Banteng (Buffalo Rock)
 - d) Singapore Strait – Horsburgh Lighthouse

5. **Malacca Strait – High and Low Water Predictions** at the following stations:
 - a) Kedah Pier, Pulau Pinang
 - b) Port Dickson
 - c) Kuala Batu Pahat

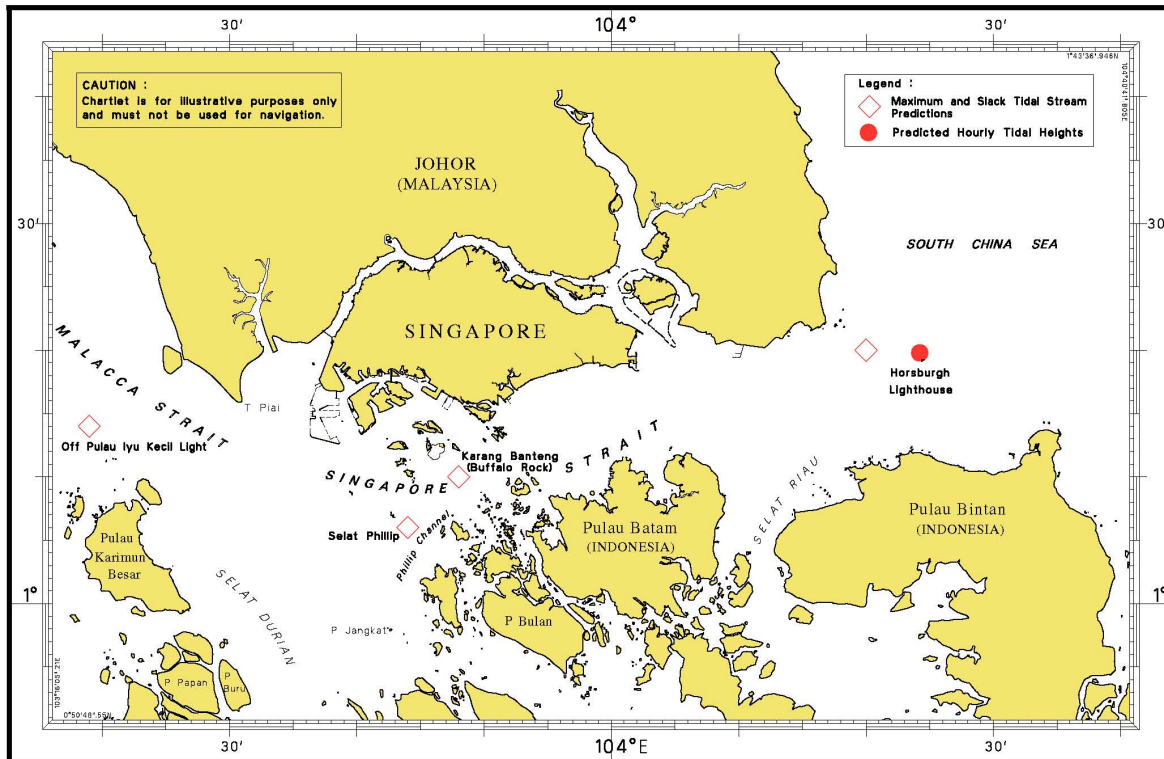
The locations of the above stations are shown in the chartlets below:

II NEW PUBLICATION

Tidal Prediction Stations within Singapore Port Waters

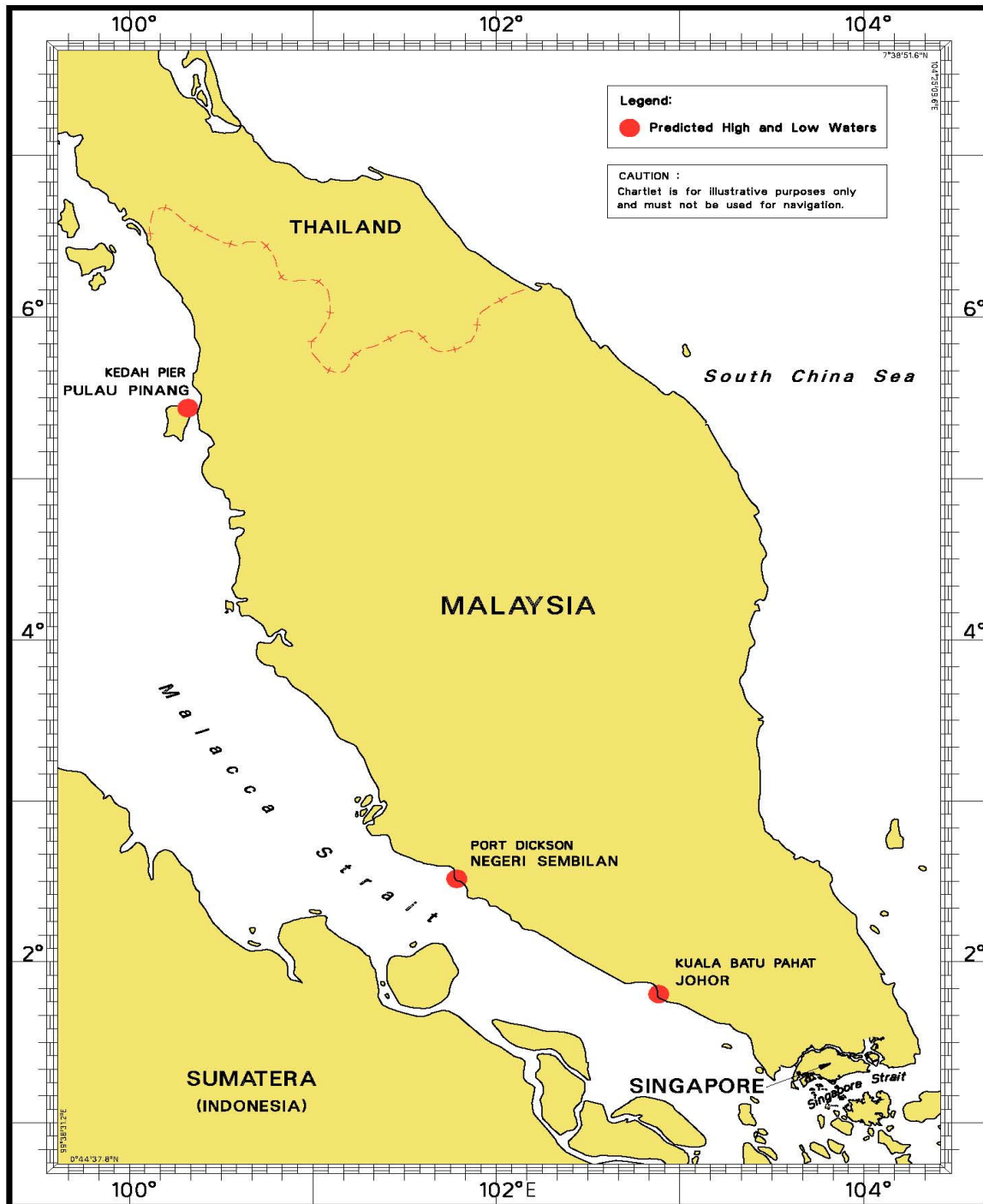


Tidal Prediction Stations in Straits of Malacca and Singapore



II NEW PUBLICATION

Tidal Prediction Stations in Malacca Strait



This publication is available from the following Chart Distributors:

1. Cornes Singapore Pte Ltd
2. DPM (Singapore) Pte Ltd
3. E.W. Limer Charts & Publications Pte Ltd
4. Kelvin Hughes (Singapore) Pte Ltd
5. Motion Smith

(Please refer Page 25 for details)

II NOTICES TO MARINERS AND CHART CORRECTIONS

GSP1/SP1 10Ed 2/03/15 Last NM 85/2015 (Maritime and Port Authority of Singapore) **NM 91/2015**

Amend	designation of light-buoy to, <i>TVE 2</i>	1°12'58"N	103°38'21"E
	designation of light-buoy to, <i>TVE 3</i>	1°12'78"N	103°37'44"E
	designation of light-buoy to, <i>TVE 4</i>	1°12'93"N	103°36'87"E

(Indonesia Notice to Mariners
No. 30/405, 406/2015)

NM 92/2015

Insert	 to beacon No.1	1°09'41"N	103°59'11"E
	 to beacon No.2	1°09'51"N	103°59'15"E

502 7Ed 1/09/15 (Indonesia Notice to Mariners
No. 30/405, 406/2015) **NM 92/2015**

Insert	 to beacon No.1	1°09'41"N	103°59'11"E
	 to beacon No.2	1°09'51"N	103°59'15"E

II TEMPORARY AND PRELIMINARY NOTICES

*(NM 93P/2015)

CITY TO CITY CABLE SYSTEM (C2C) – Replacement of Repeater

Description	:	Mariners are advised that repeater replacement works to the C2C (Singapore to Hong Kong) will be carried out in westbound traffic lane of the Traffic Separation Scheme in the Singapore Strait. Navigate with caution and give a wide berth when approaching the cable repair vessel.	
Vessel Involved	:	Cable repair vessel CS DURABLE	
Call Sign	:	V7D18	
Duration of Work	:	With effect from 9 th to 21 st November 2015 (13 days). 24 hours daily.	
Locations of repeater faults (Coordinates in WGS84)	:	Latitude (N) 01 ° 16.532'	Longitude (E) 104 ° 07.362'
Charts Affected	:	Singaporean GSP1/SP1, 202, 502	Dual Badged BA4042, BA4043

*Source: Maritime and Port Authority of Singapore

II TEMPORARY AND PRELIMINARY NOTICES

*(NM 94P/2015)

SOUTHEAST ASIA – MIDDLE EAST – WESTERN EUROPE 5 CABLE SYSTEM (SEA-ME-WE 5) - CABLE LAYING OPERATIONS

- Purpose** : Submarine cable laying operations for the SEA-ME-WE 5 shall be executed within Singapore Port Waters; in the west-bound traffic lane of the Singapore Strait (Main Strait) Traffic Separation Scheme (TSS); and in the Precautionary Area off Sultan Shoal Lighthouse.
- Work Vessel** : 'ASEAN PROTECTOR'
- Call Sign** : 9VYR5
- Planned Dates of Operation** : With effect from 5th November 2015 until 15th March 2016. 24 hours daily.

1. Working Route

The co-ordinates (WGS84) of the designated working route are tabulated below:

Waypoint		Co-ordinates (WGS84)		Remarks
		Latitude (N)	Longitude (E)	
From	1	01° 17.158'	103° 36.957'	Singapore Port Waters
To	2	01° 16.597'	103° 36.351'	
To	3	01° 15.776'	103° 36.134'	
To	4	01° 14.888'	103° 36.068'	
To	5	01° 13.392'	103° 35.931'	-
To	6	01° 10.969'	103° 35.703'	West-bound traffic lane of the Singapore Strait (Main Strait) TSS
To	7	01° 10.869'	103° 35.648'	
To	8	01° 10.814'	103° 35.574'	
To	9	01° 10.770'	103° 35.399'	
To	10	01° 10.766'	103° 35.301'	
To	11	01° 10.885'	103° 34.189'	Precautionary Area off Sultan Shoal Lighthouse
To	12	01° 11.059'	103° 32.913'	

2. **Charts Affected:** Singaporean GSP1, SP1, 202, 500, 501; Dual Badged BA4038, BA4039 and BA4040.
3. **Caution:** Mariners are advised
- to navigate with caution.
 - to give a wide berth when approaching the cable laying vessel.

*Source: Maritime and Port Authority of Singapore

III NAVIGATIONAL INFORMATION

*(NM 95/2015) SINGAPORE PORT MARINE NOTICES

The Port Marine Notices shortlisted below would be of particular interest to mariners. Details and complete list of Port Marine Notices are available at this link:

http://www.mpa.gov.sg/sites/port_and_shipping/circulars_and_notices/port_marine_notices.page

PMN No.	Subject
118/2015	Temporary Re-alignment of Temasek Fairway and West Jurong Channel.
121/2015	Reclamation work at Pulau Tekong.
122/2015	Construction of Aviation Park Staging Ground and Changi East Finger work extension.
123/2015	Mooring and unmooring of vessels off Pulau Tekong.
124/2015	Reclamation work at western part of Tuas View Extension.
125/2015	Reclamation work off Temasek Fairway, west of Jurong Island.
126/2015	Demolition of jetty at Pasir Panjang Power Station.
128/2015	Soil investigation work off west of Tuas View, Johor Strait.

*(NM 96/2015) SINGAPOREAN PRINT-ON-DEMAND (POD) CHARTS

Print-On-Demand (POD) Charts are the most up-to-date paper nautical charts printed for navigational use. These nautical charts are produced in accordance with the International Hydrographic Organisation (IHO) chart specifications. These official nautical charts are continually updated to the latest Notices to Mariners before they are printed and sold to users.

These POD Charts include 200, 201, 202, 500, 501, 502 and 503.

BENEFITS TO OUR CUSTOMERS

Convenience

Customers need not make numerous hand corrections to the nautical charts before use. In addition the updated POD Charts are more accurate and reliable than offset printed charts with hand corrections.

Clarity

Clarity in the presentation of updated information as compared to lithographic printed charts, where in some cases there are several overlapping corrections over existing information.

Coverage

The POD Charts cover the Malacca and Singapore Straits, from One Fathom Bank to Horsburgh Lighthouse.

*Source: Maritime and Port Authority of Singapore

III AMENDMENTS TO PUBLICATIONS

***(NM 97/2015) UPDATING OF PUBLICATION “SINGAPORE PORT INFORMATION 2014/2015”**

1. Page 109

DEPTHS OF NAVIGATIONAL CHANNELS AND FAIRWAYS

Amend the following:

LOCATIONS	DEPTHS (m)	REMARKS
Temasek Fairway	15.2	-
East Johor Strait – Eastern Buoy to Malang Papan Beacon	11.8	-
East Johor Strait – Punggol Point to Sembawang Shipyard	11.1	-

2. Page 111

DEPTHS OF RIVERS AND BASINS

Amend the following:

LOCATIONS	DEPTHS (m)	REMARKS
Temasek Basin	16.3	-

*Source: Maritime and Port Authority of Singapore

IV REPRINT OF RADIO NAVIGATIONAL WARNINGS

The following Radio Navigational Warnings have been shortlisted, as they would be of particular interest to mariners.

TT175

VESSELS IN EAST JOHOR STRAIT ARE ADVISED TO NAVIGATE WITH CAUTION WHEN NEAR THE PROJECT AREAS OFF PULAU TEKONG, CHANGI AND MALANG PAPAN AS SHALLOW WATER AREAS EXIST. VESSELS ARE ADVISED TO KEEP LOOKOUT FOR TUGS AND BARGES NAVIGATING NEAR THE PROJECT AREAS AND PASSENGER FERRIES CROSSING BETWEEN CHANGI AND PULAU TEKONG AND VICINITY OF PASIR GUDANG.

TT198

REPORTS OF VISIBILITY IN THE SINGAPORE STRAIT AND PORT WATERS IS REDUCED BY HAZE. VISIBILITY RANGE IS LESS THAN 5 NM. ALL VESSELS ARE ADVISED TO NAVIGATE WITH EXTRA CAUTION.

TT273

ALL VESSELS ARE ADVISED TO NAVIGATE WITH CAUTION, COMPLY WITH THE INTERNATIONAL COLLISION REGULATIONS, MAINTAIN VHF RADIO WATCH AND LISTEN TO TRAFFIC INFORMATION WHEN NAVIGATING IN THE SINGAPORE STRAIT AND PORT WATERS. MARINERS ARE ALSO ADVISED TO KEEP A GOOD LOOKOUT OF FREQUENT FERRIES CROSSING THE SINGAPORE STRAIT.

TT279 (031940H)

BATU BERHANTI BUOY IS REMOVED FOR MAINTENANCE. VESSELS ADVISED TO NAVIGATE WITH CAUTION.

TT282

RACON DELTA Q(6)LFL.15S IN POSITION LAT 01° 03.60'N LONG 103° 38.85'E IS REPORTED UNLIT. ALL VESSELS ARE ADVISED TO NAVIGATE WITH CAUTION.

TT961

VESSELS INTENDING TO CROSS THE TRAFFIC SEPARATION SCHEME(TSS) OR PRECAUTIONARY AREAS IN THE SINGAPORE STRAIT DURING THE HOURS OF DARKNESS ARE RECOMMENDED TO DISPLAY THE NIGHT SIGNALS CONSISTING OF 3 ALL-ROUND GREEN LIGHTS IN A VERTICAL LINE WITH EFFECT FROM 1ST JULY 2011 AT 010000UTC (0800SGT) AS DETAILED IN MARITIME AND PORT AUTHORITY OF SINGAPORE'S PORT MARINE CIRCULAR, 02 OF 2011 DATED 30 MAY 2011.

ISSUED BY SINGAPORE PORT OPERATIONS CONTROL CENTRE (as at 25th October 2015)

V

EXTRACT OF ADMIRALTY NOTICES TO MARINERS FOR DUAL-BADGED CHARTS

These notices can also be accessed directly from UKHO Website:

<http://www.ukho.gov.uk/ProductsandServices/MartimeSafety/Pages/NMPublic.aspx>

4999 MISCELLANEOUS UPDATES TO CHARTS

Source: UKHO

Chart	Previous Update Details	
4036	3711/15	Replace existing note, MARINERS' ROUTEING GUIDE STRAITS OF MALACCA AND SINGAPORE, with accompanying note, MARINERS' ROUTEING GUIDES MALACCA AND SINGAPORE STRAITS, centred on 1° 09'·858N., 103° 49'·190E.
4037	4459/15	Replace existing note, MARINERS' ROUTEING GUIDE MALACCA AND SINGAPORE STRAITS, with accompanying note, MARINERS' ROUTEING GUIDES MALACCA AND SINGAPORE STRAITS, centred on 1° 16'·444N., 103° 49'·616E.
4038	4667/15	Replace existing note, MARINERS' ROUTEING GUIDE MALACCA AND SINGAPORE STRAITS, with accompanying note, MARINERS' ROUTEING GUIDES MALACCA AND SINGAPORE STRAITS, centred on 1° 24'·53N., 103° 35'·54E.
4039	4667/15	Replace existing note, MARINERS' ROUTEING GUIDE MALACCA AND SINGAPORE STRAITS, with accompanying note, MARINERS' ROUTEING GUIDES MALACCA AND SINGAPORE STRAITS, centred on 1° 03'·60N., 103° 46'·60E.
4040	New Edition 27/08/2015	Replace existing note, MARINERS' ROUTEING GUIDE MALACCA AND SINGAPORE STRAITS, with accompanying note, MARINERS' ROUTEING GUIDES MALACCA AND SINGAPORE STRAITS, centred on 1° 19'·39N., 103° 46'·59E.
4041	New Edition 27/08/2015	Replace existing note, MARINERS' ROUTEING GUIDE MALACCA AND SINGAPORE STRAITS, with accompanying note, MARINERS' ROUTEING GUIDES MALACCA AND SINGAPORE STRAITS, centred on 1° 17'·47N., 103° 47'·84E.
4042	3456/15	Replace existing note, MARINERS' ROUTEING GUIDE MALACCA AND SINGAPORE STRAITS, with accompanying note, MARINERS' ROUTEING GUIDES MALACCA AND SINGAPORE STRAITS, centred on 1° 10'·96N., 104° 04'·96E.
4043	4427/15	Replace existing note MARINERS' ROUTEING GUIDE THE STRAITS OF MALACCA AND SINGAPORE, with accompanying note, MARINERS' ROUTEING GUIDES MALACCA AND SINGAPORE STRAITS, centred on 1° 28'·18N., 104° 08'·21E.

5101 MALAYSIA – Peninsular Malaysia, West Coast – Pelabuhan Tanjung Pelepas and approaches – Legends.

Source: UKHO

Chart 4038 (Panel B, Pelabuhan Tanjung Pelepas) [previous update 4999/15] WGS84 DATUM

Insert legend, See NM5099(P)/15, oriented NW/SE, centred on: 1° 20'·972N., 103° 32'·825E.

Chart 4038 [previous update 4999/15] WGS84 DATUM

Insert legend, See NM5099(P)/15, centred on: 1° 15'·49N., 103° 32'·53E.

5143 SINGAPORE – Pulau Ubin SE, Angler Bank and Pulau Tekong Kechil S – Automatic Identification Systems. Buoyage.

Source: Maritime and Port Authority of Singapore

Chart 4043 [previous update 4999/15] WGS84 DATUM

Insert Automatic Identification System, **AIS**, at light-beacon 1° 24'·10N., 103° 59'·34E.
Automatic Identification System, **AIS**, at light-buoy 1° 21'·10N., 104° 03'·01E.

V

EXTRACT OF ADMIRALTY NOTICES TO MARINERS FOR DUAL-BADGED CHARTS

5143 SINGAPORE – Pulau Ubin SE, Angler Bank and Pulau Tekong Kechil S – Automatic Identification Systems. Buoyage. (continued)

Chart 4043 [previous update 4999/15] WGS84 DATUM








Delete	 <i>Fl.Y.2s TJUT C1</i>	(a) 1° 24'·23N., 104° 00'·92E.
	 <i>Fl.Y.2s TJUT C3</i> , close E of:	(a) above
	 <i>Fl.Y.2s TJUT C4</i> , close NE of:	(a) above
	 <i>Fl.Y.2s TJUT C6</i> , close N of:	(a) above

Chart 4044 (Panel A, Serangoon Harbour) [previous update 3954/15] WGS84 DATUM

Insert	Automatic Identification System, AIS , at light-beacon	1° 24'·101N., 103° 59'·338E.
--------	---	------------------------------

Chart 4044 [previous update 3954/15] WGS84 DATUM

Insert	Automatic Identification System, AIS , at light-beacon	1° 24'·10N., 103° 59'·34E.
	Automatic Identification System, AIS , at light-buoy	1° 21'·10N., 104° 03'·01E.
Delete	 <i>Fl.Y.2s TJUT C1</i>	(a) 1° 24'·23N., 104° 00'·92E.
	 <i>Fl.Y.2s TJUT C3</i> , close E of:	(a) above
	 <i>Fl.Y.2s TJUT C4</i> , close NE of:	(a) above
	 <i>Fl.Y.2s TJUT C6</i> , close N of:	(a) above

5099(P)/15 MALAYSIA – Peninsular Malaysia, West Coast – Pelabuhan Tanjung Pelepas and approaches - Depths. Dredged areas. Breakwaters. Buoyage.

Source: ENC MY6B5123

- The approach channel to Pelabuhan Tanjung Pelepas, between positions 1° 15'·83N., 103° 32'·59E. and 1° 19'·64N., 103° 33'·35E. is no longer dredged to 16·0m. Depths less than charted exist in the area. The most significant are as follows:

Depth	Position
14·1m	1° 18'·86N., 103° 33'·48E.
13·7m	1° 19'·12N., 103° 33'·50E.

- The existing charted dredged area between 1° 18'·22N., 103° 33'·16E. and 1° 19'·37N., 103° 33'·23E. is no longer dredged to 18·0m. Depths are significantly shoaler throughout. The most significant are as follows:

Depth	Position
12·0m	1° 18'·70N., 103° 33'·13E.
10·9m	1° 18'·81N., 103° 33'·09E.
8·7m	1° 19'·23N., 103° 33'·04E.

- The dredged areas within Pelabuhan Tanjung Pelepas, between positions 1° 19'·64N., 103° 33'·35E. and 1° 22'·43N., 103° 32'·36E. have changed. Buoyage has been moved accordingly and depths less than charted exist in this area. The most significant depths are as follows:

Depth	Position
15·3m	1° 19'·80N., 103° 33'·07E.
14·9m	1° 20'·18N., 103° 32'·90E.
15·3m	1° 20'·68N., 103° 32'·78E.
14·4m	1° 21'·17N., 103° 32'·90E.
14·9m	1° 21'·44N., 103° 32'·76E.

V

EXTRACT OF ADMIRALTY NOTICES TO MARINERS FOR DUAL-BADGED CHARTS

5099(P)/15 MALAYSIA – Peninsular Malaysia, West Coast – Pelabuhan Tanjung Pelepas and approaches - Depths. Dredged areas. Breakwaters. Buoyage. (continued)

4. Two new breakwaters have been constructed, joining the following positions:

1° 21' 26N., 103° 32' 13E. (shore)
 1° 21' 41N., 103° 32' 34E.
 1° 21' 43N., 103° 32' 41E.
 1° 21' 02N., 103° 32' 54E.
 and
 1° 18' 66N., 103° 32' 84E. (shore)
 1° 18' 53N., 103° 32' 95E.
 1° 18' 54N., 103° 33' 03E.

5. Mariners are advised to navigate with caution in the area and contact the local port authority for further information.
 6. These changes will be included in the next New Edition of Chart 4038 to be published early 2016. (WGS84 Datum)

Charts affected - 4038

5187 SINGAPORE – Jurong Island W and SW, Sakra Basin and Town Reach – Automatic Identification Systems. Berth. Dredged area. Foul. Obstruction. Depth.

Source: Maritime and Port Authority of Singapore

Chart 4030 [previous update 4667/15] WGS84 DATUM

Insert	legend, AIS , at light Automatic Identification System, AIS , at light-buoy	1° 14' 377N., 103° 38' 884E. 1° 11' 798N., 103° 39' 550E.
--------	--	--

Chart 4031 [previous update 4667/15] WGS84 DATUM

Insert	legend, AIS , at light Automatic Identification System, AIS , at light-buoy	1° 14' 377N., 103° 38' 884E. 1° 11' 796N., 103° 39' 549E.
--------	--	--

Chart 4032 [previous update 4667/15] WGS84 DATUM

Insert	10m contour, joining:	1° 15' 769N., 103° 42' 996E. (existing contour) 1° 15' 736N., 103° 43' 058E. (existing contour) 1° 15' 766N., 103° 43' 018E.
Delete	berth number, 2 limit of dredged area, pecked line, and associated legend, 6.4m (2014), joining:	1° 15' 792N., 103° 42' 987E. (shore) 1° 15' 778N., 103° 42' 980E. 1° 15' 735N., 103° 43' 058E. 1° 15' 749N., 103° 43' 065E. (shore)

Chart 4034 [previous update 4476/15] WGS84 DATUM

Insert	10m contour, joining	1° 15' 769N., 103° 42' 996E. (existing contour) 1° 15' 736N., 103° 43' 058E. (existing contour)
Delete	berth number, 2 limit of dredged area, pecked line, and associated legend, 6.4m (2014), joining:	1° 15' 779N., 103° 43' 030E. 1° 15' 792N., 103° 42' 987E. (shore) 1° 15' 778N., 103° 42' 980E. 1° 15' 735N., 103° 43' 058E. 1° 15' 749N., 103° 43' 065E. (shore)

V

EXTRACT OF ADMIRALTY NOTICES TO MARINERS FOR DUAL-BADGED CHARTS

5187 SINGAPORE – Jurong Island W and SW, Sakra Basin and Town Reach – Automatic Identification Systems. Berth. Dredged area. Foul. Obstruction. Depth. (continued)

Chart 4038 [*previous update 5101/15*] WGS84 DATUM

Insert	legend, AIS , at light	1° 14'·38N., 103° 38'·88E.
	Automatic Identification System, AIS , at light-buoy	1° 11'·81N., 103° 39'·56E.

Chart 4038 (Panel A, Town Reach) [*previous update 5101/15*] WGS84 DATUM

Insert	# (87)	1° 27'·13N., 103° 44'·44E.
--------	--------	----------------------------



Obstn

(a) 1° 27'·02N., 103° 44'·58E.

Delete	depth, δ_l , close NW of:	(a) above
--------	----------------------------------	-----------

Chart 4039 [*previous update 4999/15*] WGS84 DATUM

Insert	Automatic Identification System, AIS , at light-buoy	1° 11'·81N., 103° 39'·56E.
--------	---	----------------------------

Chart 4040 [*previous update 4999/15*] WGS84 DATUM

Insert	legend, AIS , at light	1° 14'·38N., 103° 38'·89E.
	Automatic Identification System, AIS , at light-buoy	1° 11'·81N., 103° 39'·56E.

5276 SINGAPORE – Pasir Panjang Terminal, Sentosa S and Pulau Sebarok SE – Buoyage. Automatic Identification Systems, Maritime limit. Legend. NM Blocks.

Source: Maritime and Port Authority of Singapore

Chart 4034 [*previous update 5187/15*] WGS84 DATUM

Insert	the accompanying block A, centred on:	1° 16'·4N., 103° 46'·9E.
	the accompanying block B, centred on:	1° 15'·3N., 103° 47'·0E.

Delete	<i>Fl(2)R.5s PKH V5</i>	(a) 1° 16'·153N., 103° 47'·663E.
--------	-------------------------	----------------------------------



Fl.R.8s PKH V3

(b) 1° 16'·030N., 103° 47'·694E.



Fl.R.6s PKH V13

(c) 1° 15'·976N., 103° 47'·662E.



Fl.R.2s PKH V7

(d) 1° 15'·665N., 103° 47'·638E.



Fl.R.4s PKH V8

(e) 1° 15'·320N., 103° 47'·433E.

maritime limit, pecked line, joining:

1° 16'·243N., 103° 47'·717E.

(shore)

(a)-(e) above

1° 15'·266N., 103° 47'·360E.

1° 15'·274N., 103° 47'·348E.

(E border of block)

1° 15'·749N., 103° 47'·543E.

legend, Works in progress (2015), centred on:

Chart 4035 [*previous update 4476/15*] WGS84 DATUM

Insert	the accompanying block A, centred on:	1° 16'·4N., 103° 46'·9E.
	the accompanying block B, centred on:	1° 15'·3N., 103° 47'·0E.
	Automatic Identification System, AIS , at Sebarok light-beacon	1° 11'·872N., 103° 48'·433E.

V

EXTRACT OF ADMIRALTY NOTICES TO MARINERS FOR DUAL-BADGED CHARTS

5276 SINGAPORE – Pasir Panjang Terminal, Sentosa S and Pulau Sebarok SE – Buoyage. Automatic Identification Systems, Maritime limit. Legend. NM Blocks. (continued)

Chart 4035 [*previous update 4476/15*] WGS84 DATUM

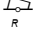
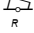
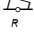
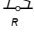
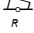
Delete		<i>Fl(2)R.5s</i> PKH V5	(a) 1° 16'·153N., 103° 47'·663E.
		<i>Fl.R.8s</i> PKH V3	(b) 1° 16'·030N., 103° 47'·694E.
		<i>Fl.R.6s</i> PKH V13	(c) 1° 15'·976N., 103° 47'·662E.
		<i>Fl.R.2s</i> PKH V7	(d) 1° 15'·665N., 103° 47'·638E.
		<i>Fl.R.4s</i> PKH V8	(e) 1° 15'·320N., 103° 47'·433E.
	maritime limit, pecked line, joining:		1° 16'·243N., 103° 47'·717E.
			(shore)
			(a)-(e) above
			1° 15'·266N., 103° 47'·360E.
			1° 15'·286N., 103° 47'·326E.
			(E border of block)
			1° 15'·456N., 103° 47'·414E.
		legend, Works in progress (2015), centred on:	

Chart 4036 [*previous update 4999/15*] WGS84 DATUM

Insert Automatic Identification System, **AIS**, at Sebarok light-beacon 1° 11'·872N., 103° 48'·433E.

Chart 4037 [*previous update 4999/15*] WGS84 DATUM

Insert Automatic Identification System, **AIS**, at Selegi light-beacon 1° 13'·579N., 103° 49'·594E.

Chart 4039 [*previous update 5187/15*] WGS84 DATUM

Insert Automatic Identification System, **AIS**, at Sebarok light-beacon 1° 11'·87N., 103° 48'·43E.

Chart 4040 [*previous update 5187/15*] WGS84 DATUM

Insert the accompanying block, centred on:
Automatic Identification System, **AIS**, at Selegi light-beacon 1° 15'·9N., 103° 47'·2E.
Automatic Identification System, **AIS**, at Sebarok light-beacon 1° 13'·58N., 103° 49'·59E.
Automatic Identification System, **AIS**, at Sebarok light-beacon 1° 11'·87N., 103° 48'·43E.


Chart 4041 [*previous update 4999/15*] WGS84 DATUM

Insert the accompanying block, centred on:
Automatic Identification System, **AIS**, at Selegi light-beacon 1° 15'·8N., 103° 47'·4E.
Automatic Identification System, **AIS**, at Sebarok light-beacon 1° 13'·58N., 103° 49'·59E.
Automatic Identification System, **AIS**, at Sebarok light-beacon 1° 11'·87N., 103° 48'·43E.

5416 SINGAPORE – Buran Channel – Rock. Depth.

Source: Maritime and Port Authority of Singapore

Chart 4037 [*previous update 5276/15*] WGS84 DATUM

Insert  with seabed type, *R* (a) 1° 14'·330N., 103° 50'·630E.
Delete depth, 5, and associated 5m contour, close NW of: (a) above

5449 SINGAPORE – Raffles Reserved anchorage E – Buoy.

Source: Maritime and Port Authority of Singapore

Chart 4035 [*previous update 5276/15*] WGS84 DATUM

Delete  *Fl.Y.8s* EM-DHI-SMK01 1° 11'·432N., 103° 45'·675E.

Chart 4036 [*previous update 5276/15*] WGS84 DATUM

Delete  *Fl.Y.8s* EM-DHI-SMK01 1° 11'·432N., 103° 45'·675E.

V
EXTRACT OF ADMIRALTY NOTICES TO MARINERS
FOR DUAL-BADGED CHARTS

5449 SINGAPORE – Raffles Reserved anchorage E – Buoy. (continued)

Chart 4039 [*previous update 5276/15*] WGS84 DATUM

Delete  *Fl.Y.8s EM-DHI-SMK01* 1° 11'·43N., 103° 45'·68E.

Chart 4040 [*previous update 5276/15*] WGS84 DATUM

Delete  *Fl.Y.8s EM-DHI-SMK01* 1° 11'·43N., 103° 45'·68E.

5451(P)/15 SINGAPORE – Temasek Fairway and West Jurong Channel – Reclamation areas. Channel limits Buoyage.

Source: Maritime and Port Authority of Singapore

1. There is ongoing reclamation work at Tuas View.
2. *The Temasek Fairway / West Jurong Channel limits have been amended to join the following positions:
 - 1° 16'·374N., 103° 38'·709E.
 - 1° 16'·582N., 103° 38'·709E.
 - 1° 17'·400N., 103° 40'·432E.
 - and
 - 1° 16'·127N., 103° 39'·216E.
 - 1° 16'·485N., 103° 39'·216E.
 - 1° 16'·585N., 103° 39'·342E.
 - 1° 17'·170N., 103° 40'·579E.
3. Buoyage marking the area has been amended.
4. *These changes are shown in the accompanying diagram, however there may be amendments as the work progresses. For the latest information, mariners are advised to consult local authorities and refer to updated information which is available at this link: <http://www.mpa.gov.sg>
5. Mariners are advised to navigate with caution in the area.
6. Former Notice 2405(P)/15 is cancelled.
 * Indicates new or revised entry.
 (WGS84 Datum)

Charts affected – 4030, 4031, 4033, 4038, 4040

Updated to Admiralty Notices to Mariners Edition No. 44 of 2015 dated 29th October 2015.

To accompany Notice to Mariners 4999/2015

On Chart 4036

MARINERS' ROUTEING GUIDES MALACCA AND
SINGAPORE STRAITS

See Mariners' Routeing Guides, 5525 Malacca Straits and 5524 Singapore Straits, for information on passage planning, routeing regulations, aids to navigation, radio reporting and other navigational advice.

To accompany Notice to Mariners 4999/2015

On Chart 4037

MARINERS' ROUTEING GUIDES MALACCA AND
SINGAPORE STRAITS

See Mariners' Routeing Guides, 5525 Malacca Straits and 5524 Singapore Straits, for information on passage planning, routeing regulations, aids to navigation, radio reporting and other navigational advice.

Wk40/15

To accompany Notice to Mariners 4999/2015

On Chart 4038

MARINERS' ROUTEING GUIDES MALACCA AND
SINGAPORE STRAITS
See Mariners' Routeing Guides, 5525 Malacca Straits
and 5524 Singapore Straits, for information on passage
planning, routeing regulations, aids to navigation, radio
reporting and other navigational advice.

To accompany Notice to Mariners 4999/2015

On Chart 4039

MARINERS' ROUTEING GUIDES MALACCA
AND SINGAPORE STRAITS
See Mariners' Routeing Guides, 5525 Malacca
Straits and 5524 Singapore Straits, for information
on passage planning, routeing regulations, aids to
navigation, radio reporting and other navigational
advice.

To accompany Notice to Mariners 4999/2015

On Chart 4040

MARINERS' ROUTEING GUIDES MALACCA AND
SINGAPORE STRAITS
See Mariners' Routeing Guides, 5525 Malacca Straits and
5524 Singapore Straits, for information on passage
planning, routeing regulations, aids to navigation, radio
reporting and other navigational advice.

To accompany Notice to Mariners 4999/2015

On Chart 4041

MARINERS' ROUTEING GUIDES MALACCA AND
SINGAPORE STRAITS
See Mariners' Routeing Guides, 5525 Malacca Straits
and 5524 Singapore Straits, for information on passage
planning, routeing regulations, aids to navigation, radio
reporting and other navigational advice.

To accompany Notice to Mariners 4999/2015

On Chart 4042

MARINERS' ROUTEING GUIDES MALACCA
AND SINGAPORE STRAITS
See Mariners' Routeing Guides, 5525 Malacca
Straits and 5524 Singapore Straits, for information
on passage planning, routeing regulations, aids to
navigation, radio reporting and other navigational
advice.

To accompany Notice to Mariners 4999/2015

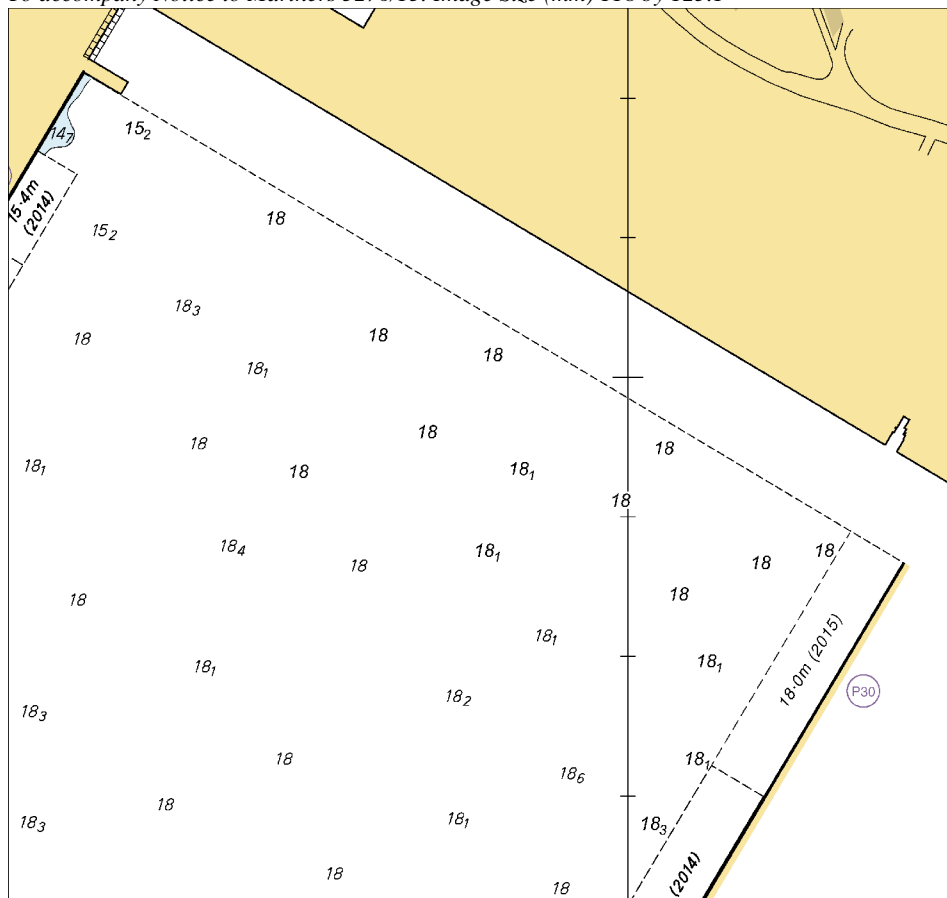
On Chart 4043

MARINERS' ROUTEING GUIDES MALACCA AND
SINGAPORE STRAITS
See Mariners' Routeing Guides, 5525 Malacca Straits
and 5524 Singapore Straits, for information on passage
planning, routeing regulations, aids to navigation, radio
reporting and other navigational advice.

[illegible]

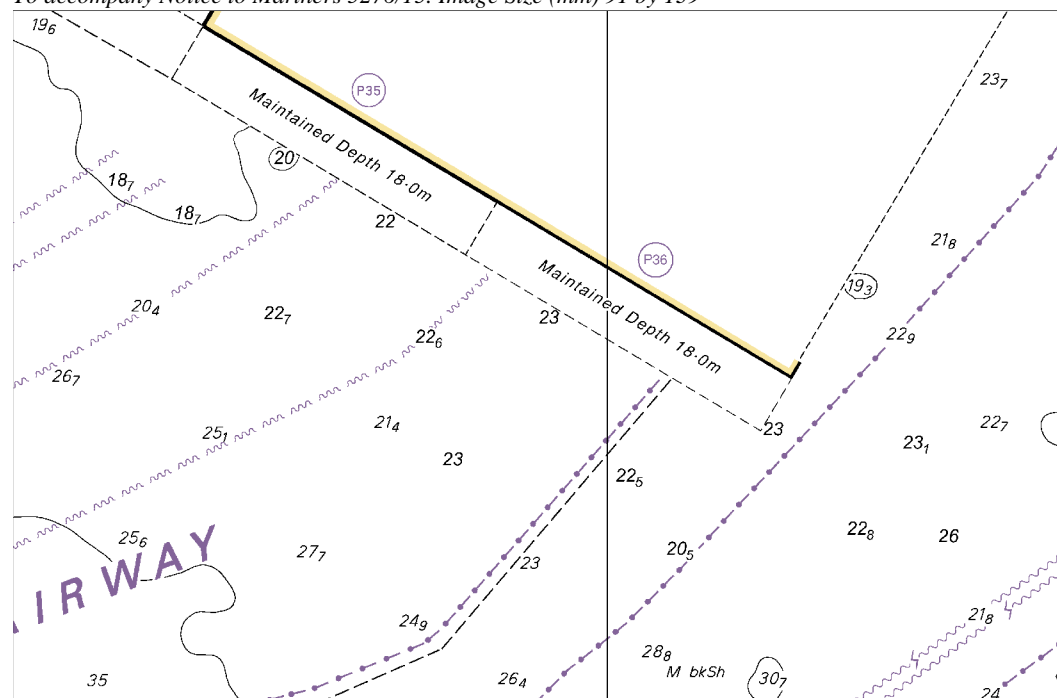
Block B for Chart No 4034

To accompany Notice to Mariners 5276/15. Image Size (mm) 118 by 125.1



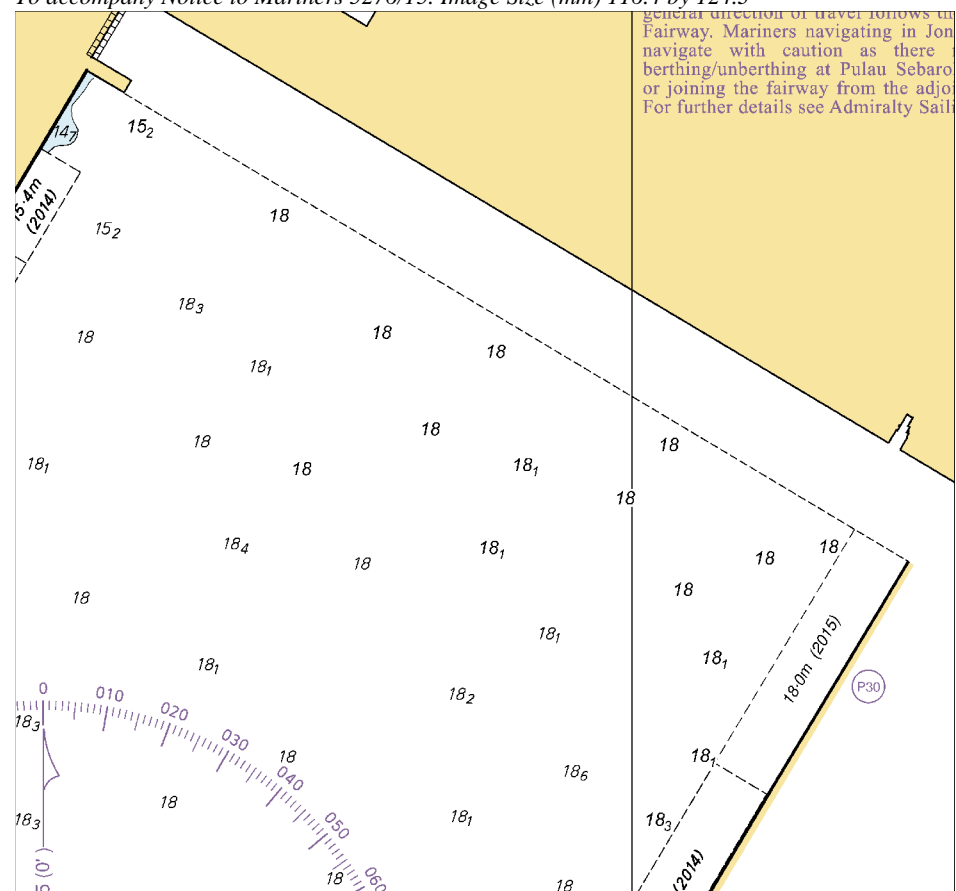
Block A for Chart No 4034

To accompany Notice to Mariners 5276/15. Image Size (mm) 91 by 139



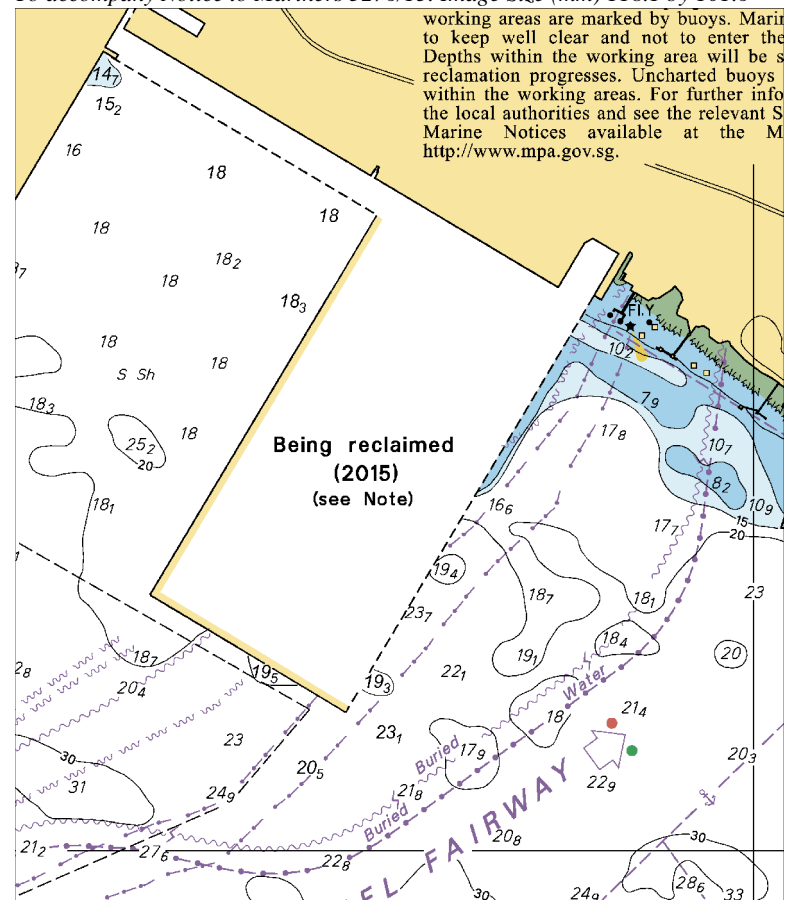
Block B for Chart No 4035

To accompany Notice to Mariners 5276/15. Image Size (mm) 116.4 by 124.3

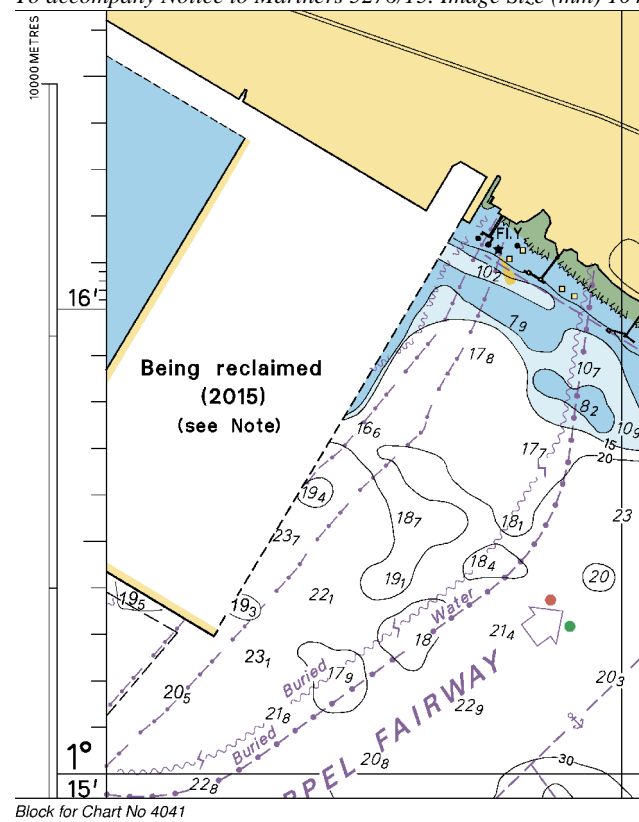


Block A for Chart No 4035

To accompany Notice to Mariners 5276/15. Image Size (mm) 118.1 by 101.6



To accompany Notice to Mariners 5276/15. Image Size (mm) 104.2 by 82.9



SINGAPORE ENC DISTRIBUTORS

ENC DISTRIBUTOR	ADDRESS	TEL/FAX /EMAIL/WEBSITE
ChartWorld GmbH	Atlantic Haus, Zirkusweg 1 D-20359 Hamburg Germany	Tel: +49 40 853 58 6942 Fax: +49 40 853 58 6949 Email: sales@chartworld.com
ChartWorld Asia Pacific Pte Ltd.	Frontech Centre 07-01 15 Jalan Kilang Barat Singapore 159357	Tel: +65 6513 3500 Website: http://www.chartworld.com http://www.ecdis-as-a-service.com
DPM (Singapore) Pte Ltd	2 Boon Leat Terrace #05-02/03, Harbourside 2 Singapore 119844	Tel: +65 6270 4060 Fax: +65 6276 3858 Email: sales@dpmsingapore.com.sg Website: http://www.dpmsingapore.com.sg
Maritime Information Systems (MARIS)	52, Telok Blangah Road #01-06 Telok Blangah House Singapore 058809	Tel: +65 6276 1472 Fax: +65 6276 1473 Email: : support@maris.sg Website: http://www.maris.no
Maritime Information Systems AS (MARIS)	Danholmen 25, 3128 Notteroy Norway	Tel: +47 33 30 42 50 Fax: +47 33 30 42 51 Email: : sales@maris.no Website: http://www.maris.no
Motion Smith	15 Jalan Kilang Barat #08-01/05 Frontech Centre Singapore 159357	Tel: +65 6220 5098 Fax: +65 6225 4902 Email: sales@motsmith.com Website: http://www.motsmith.com
Transas Marine Pacific Pte Ltd	Cyber Centre 16/18 Jalan Kilang Barat Off Jalan Bukit Merah Singapore 159358	Tel: +65 6271 0200 Fax: +65 6271 7300 Email: navigation.asia@transas.com Website: http://www.transas.com
Japan Hydrographic Association (Electronic Charts Division)	Daiichi Sogo Bldg, 6F 1-6-6, Hanedakuko, Ota-ku Tokyo 144-0041, Japan	Tel: +81 3 5708 7093 Fax: +81 3 5708 7094 Email: shimizu-6kj@jha.jp Website: http://www.jha.or.jp/en/jha/
Jeppesen Norway AS	P.O Box 212 , N-4371 Egersund Norway	Tel: +47 51 46 4700 Fax: +47 51 46 4701 Email: license.marine@jeppesen.com Website : http://www.jeppesen.com/marine
PRIMAR STAVANGER	Lervigsveien 36, P.O Box 60 N-4001 Stavanger, Norway	Tel: +47 51 93 9500 Fax: +47 51 93 9501 Email: sales@ecc.no Website : http://www.primar.no
The United Kingdom Hydrographic Office	Admiralty Way, Taunton Somerset, TA1 2DN United Kingdom	Tel: +44 1823 33 7900 Fax: +44 1823 28 4077 Emails: ENCS.SalesReports@ukho.gov.uk Website: http://www.ukho.gov.uk

Chart Distributors for the Maritime and Port Authority of Singapore
Nautical Charts and Publications

Please approach any of the Chart Distributors to purchase the Singapore Nautical Charts and Publications.

CHART DISTRIBUTORS	ADDRESS	TEL/FAX/EMAIL/WEBSITE
Cornes (Singapore) Pte Ltd	10 Anson Road #23-06/6A International Plaza Singapore 079903	Tel: +65 6223 8320 Fax: +65 6223 8321 Email: sales9850@cspl.sg Website: http://www.cornes-charts.com
DPM (Singapore) Pte Ltd	2 Boon Leat Terrace #05-02/03, Harbourside 2 Singapore 119844	Tel: +65 6270 4060 Fax: +65 6276 3858 Email: sales@dpmsingapore.com.sg Website: http://www.dpmsingapore.com.sg
E.W. Liner Charts & Publications Pte Ltd	100, Pasir Panjang Road #05-10 Singapore 118518	Tel: +65 6323 0773 Fax: +65 6323 0775 Email: ewliner@singnet.com.sg Website: http://www.ewliner.com
Kelvin Hughes (Singapore) Pte Ltd	896 Dunearn Road #03-05 Sime Darby Centre Singapore 589472	Tel: +65 6545 9880 Fax: +65 6545 8892 Email: leslie.khoo@kelvinhughes.com.sg Website: http://www.kelvinhughes.com
Motion Smith	15 Jalan Kilang Barat #08-01/05 Frontech Centre Singapore 159357	Tel: +65 6220 5098 (After office hours: +65 8163 9993) Fax: +65 6225 4902 Email: sales@motsmith.com Website: http://www.motsmith.com

HYDROGRAPHIC NOTE - Instructions

1. Mariners are requested to notify the Chief Hydrographer, Maritime and Port Authority of Singapore, when new or suspected dangers to navigation are discovered, changes are observed in aids to navigation or where corrections to nautical publications may be necessary. Reports, which cannot be confirmed or are lacking in certain details should not be withheld.
2. Any ambiguities of time, positioning and depth should be stressed and any firm expectation of being able to check the information provided on a following voyage should be mentioned.
3. Mariners using satellite position fixing systems, eg. GPS, should provide details of equipment and datum used (where applicable). Where bearings (true or magnetic) are taken visually or by radar to fix a position, it should include more than two objects in order to provide a check on its accuracy. A position may also be defined by bearing and distance from a conspicuous object eg. beacon, lighthouse etc.
4. The note should include a tracing or a digital image of the chart used and the details should be clearly marked.
5. Echo sounders frequently register greater depths than the advertised maximum depth for the equipment, eg. a trace appearing at 50 metres may be in fact be 550 metres or even 1050 metres for equipment whose maximum depth is 500 metres. Erroneous depths caused by 2nd transmission error can usually be recognised by the following:
 - (a) the tracing being weaker than normal for the depth registered,
 - (b) the trace appearing to pass through the transmission line,
 - (c) the feathery nature of the trace.
6. Upon receipt of a hydrographic note, a Notice to Mariners may be issued. The sender's vessel or name is quoted as the source unless the same information is also received in foreign Notices to Mariners.
7. Reports of shoals, uncharted dangers and defects in aids to navigation may also be made to the appropriate Singapore Port Operations Control Centre on VHF Channels 10, 12, 14, 68 or 73.

HYDROGRAPHIC NOTE

To:

Chief Hydrographer
Maritime and Port Authority of Singapore
7B Keppel Road #20-00 Tanjong Pagar Complex
Singapore 089055

Tel : (65) 6325 2027
Fax : (65) 6226 1076
Email : hydrographic@mpa.gov.sg

Sender's Contact Details :

Date :

Name of Vessel :

Address of Sender :

Tel : Fax :

Email :

Nature of Observation :

General Location :

Subject :

Position : Lat. Long.

Charts Used :

Date & Time of Observation :

Details :

.....

.....

Attachment :

Equipment Used :

Type of Position Fixing : GPS / DGPS Others :

Type of Echo Sounder :

Name and Signature :

Ship's/Company's Stamp :