



SINGAPOREAN NOTICES TO MARINERS

| SECTION | CONTENT | Page |
|---------|---|------|
| I | Index of Charts & Publications | 3 |
| II | New Charts & Publications | 10 |
| | Notices to Mariners and Chart Corrections | 17 |
| | Temporary and Preliminary Notices | 19 |
| III | Navigational Information | 20 |
| | Amendments to Publications | 21 |
| IV | Reprint of Radio Navigational Warnings | 25 |
| V | Extract of Admiralty Notices to Mariners for Dual-Badged Charts | 26 |

The monthly Notices to Mariners contain information required to keep charts and publications published by the Hydrographic Department, Maritime and Port Authority of Singapore up-to-date.

Mariners are requested to notify the Chief Hydrographer, Maritime and Port Authority of Singapore, immediately of the discovery of new or suspected dangers to navigation, observed changes to aids to navigation and ways Singaporean Charts and Publications can be improved. The Hydrographic Note on the back page should be used for this purpose.

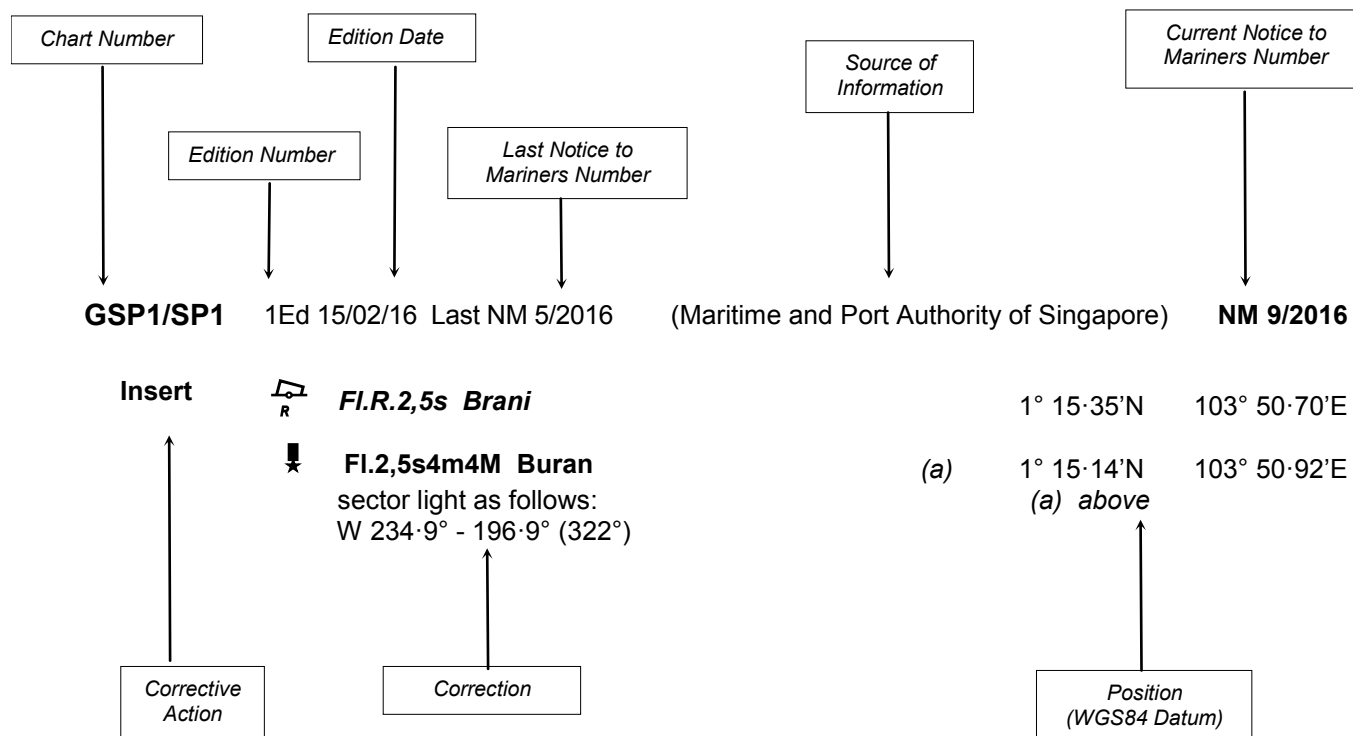
The monthly Singaporean Notices to Mariners can be accessed directly from the MPA website:

<http://www.mpa.gov.sg/web/portal/home/port-of-singapore/circulars-and-notices/singapore-notices-to-mariners-ntm>

Hydrographic Department
Maritime and Port Authority of Singapore
7B Keppel Road
#20-00 Tanjong Pagar Complex
Singapore 089055
Tel : (65) 6325 2027
Fax : (65) 6226 1076
Email : hydrographic@mpa.gov.sg
Website : www.mpa.gov.sg

EXPLANATION OF FORMAT

The elements of a typical chart correction are explained below.



Notes:

a) Notice to Mariners number followed by:

T indicates a Temporary Notice (eg. **NM 3T/2016**).

P indicates a Preliminary Notice (eg. **NM 4P/2016**).

b) Bearings are true reckoned clockwise from 000° to 359°; those relating to lights are from seaward.

c) Heights and elevations are above Mean High Water Springs.

I
INDEX OF CHARTS AND PUBLICATIONS

INDEX OF AFFECTED CHARTS

| DESCRIPTION | NOTICE NO. | PAGE NO. |
|--|------------|----------|
| Index of Singaporean Charts | - | 3, 4 |
| Index of Dual-Badged Charts | - | 5 to 7 |
| Index of Singapore Electronic Navigational Chart | - | 8 |
| Index of Malacca and Singapore Straits Electronic Navigational Chart | - | 9 |
| New Charts and Publications | - | 10 to 13 |
| Singapore Tide Tables 2017 | - | 14 to 16 |
| Singaporean Chart GSP1/SP1 | 71, *72 | 17 |
| Singaporean Chart 201 | 73 | 17 |
| Singaporean Chart 202 | 73 | 17 |
| Singaporean Chart 500 | 73 | 17 |
| Singaporean Chart 502 | *72, 74 | 17 |
| Singaporean Chart 503 | 74 | 18 |
| Temporary and Preliminary Notices | - | 19 |
| Singapore Port Marine Notices/Circulars | *75 | 20 |
| Amendments to Publications | *76 | 21 to 24 |
| Reprint of Radio Navigational Warnings | - | 25 |
| Extract of Admiralty Notices to Mariners for Dual-Badged Charts | - | 26 |
| Singapore Electronic Navigational Chart Distributors | - | 27 |
| Chart Distributors for the Maritime and Port Authority of Singaporean Charts and Publications | - | 28 |

*Source: Maritime and Port Authority of Singapore

I
INDEX OF CHARTS AND PUBLICATIONS

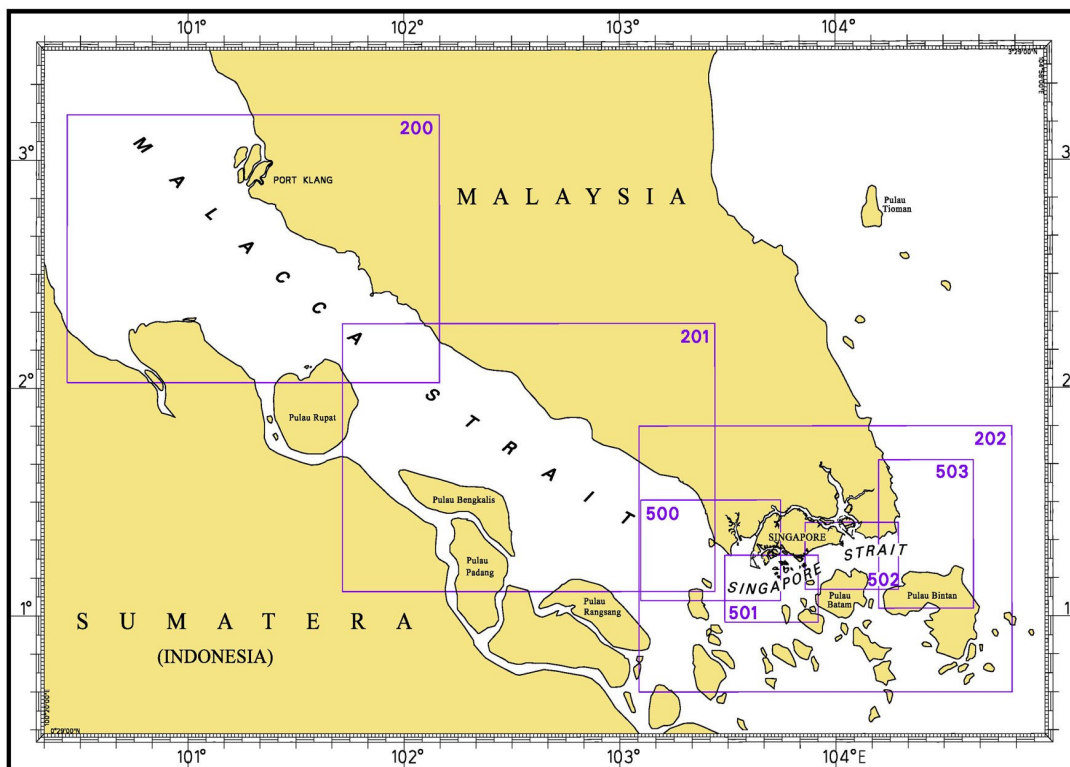
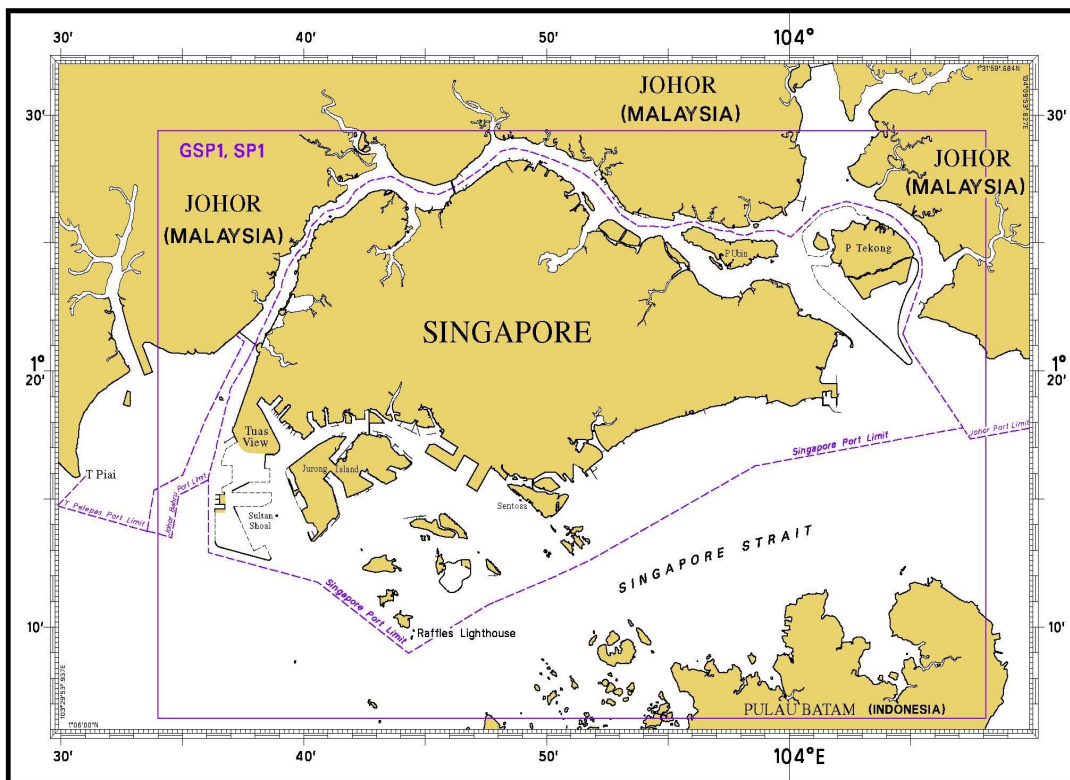
INDEX OF NOTICES

| NOTICE NO. | DESCRIPTION | PAGE NO. |
|------------|--|----------|
| - | Index of Singaporean Charts | 3, 4 |
| - | Index of Dual-Badged Charts | 5 to 7 |
| - | Index of Singapore Electronic Navigational Chart | 8 |
| - | Index of Malacca and Singapore Straits Electronic Navigational Chart | 9 |
| - | New Charts and Publications | 10 to 13 |
| - | Singapore Tide Tables 2017 | 14 to 16 |
| 71, *72 | Singaporean Chart GSP1/SP1 | 17 |
| 73 | Singaporean Chart 201 | 17 |
| 73 | Singaporean Chart 202 | 17 |
| 73 | Singaporean Chart 500 | 17 |
| *72, 74 | Singaporean Chart 502 | 17 |
| 74 | Singaporean Chart 503 | 18 |
| - | Temporary and Preliminary Notices | 19 |
| *75 | Singaporean Port Marine Notices/Circulars | 20 |
| *76 | Amendment to Publications | 21 to 24 |
| - | Reprint of Radio Navigational Warnings | 25 |
| - | Extract of Admiralty Notices to Mariners for Dual-Badged Charts | 26 |
| - | Singapore Electronic Navigational Chart Distributors | 27 |
| - | Chart Distributors for the Maritime and Port Authority of Singaporean Charts and Publications | 28 |

*Source: Maritime and Port Authority of Singapore

I INDEX OF CHARTS AND PUBLICATIONS

INDEX OF SINGAPOREAN CHARTS



Notes:

Updated Singaporean Charts are available through our Print-On-Demand (POD) Chart Service. Print-On-Demand (POD) Charts are the most up-to-date paper nautical charts printed for navigational use. These nautical charts are produced in accordance with the International Hydrographic Organisation (IHO) chart specifications. All Singaporean Charts are continually updated to the latest Notices to Mariners before they are printed and sold to users.

I

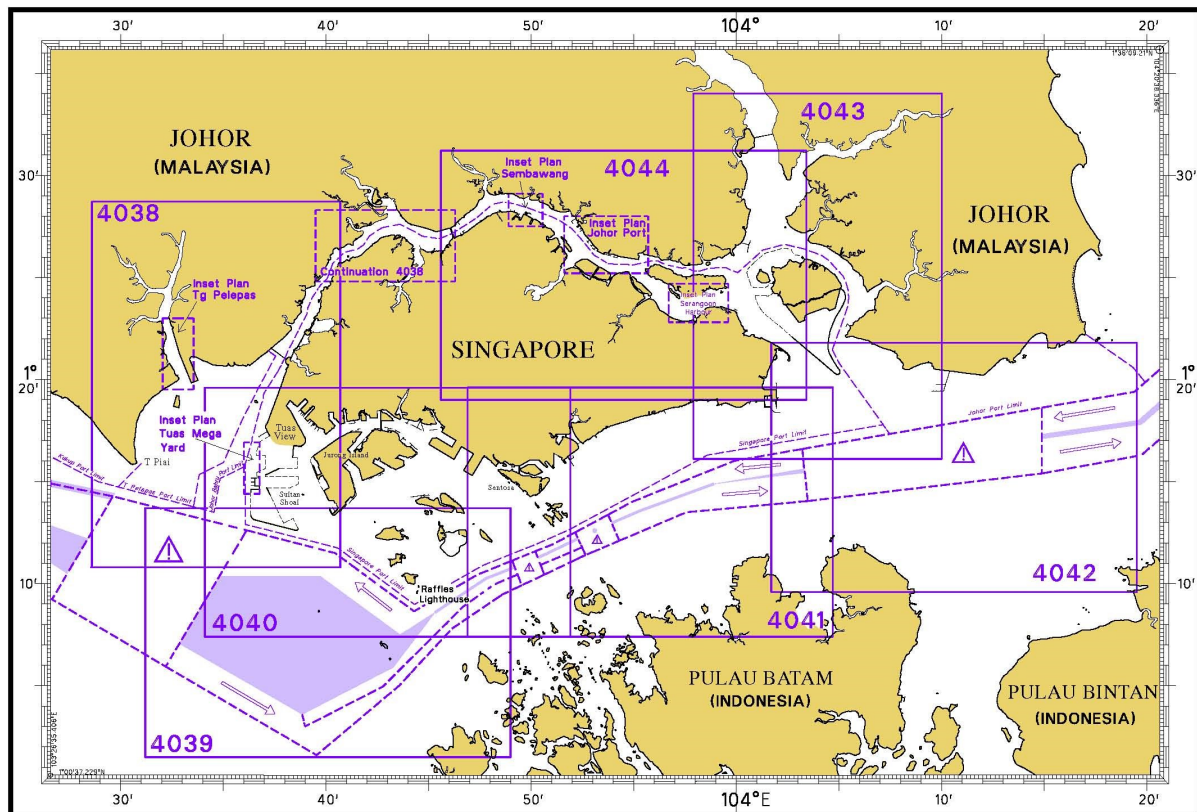
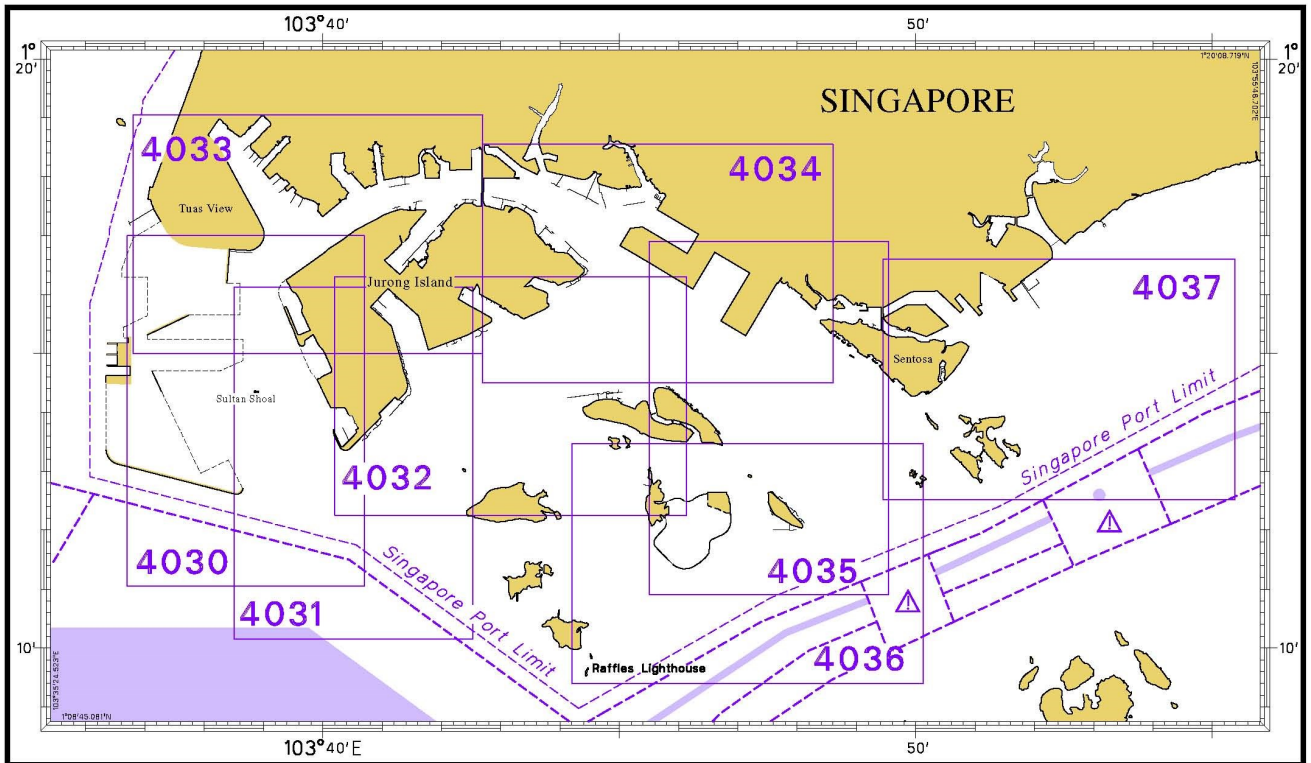
INDEX OF CHARTS AND PUBLICATIONS

SINGAPOREAN CHARTS

| Chart No. | Chart Title | Scale 1: | Date Published of Latest Edition |
|-----------|---|-------------------|----------------------------------|
| GSP1 | Anchorage and Aids to Navigation (with Area Reference) | 65 000 | 15/02/2016 |
| SP1 | Anchorage and Aids to Navigation | 65 000 | 15/02/2016 |
| 200 | Malacca Strait - Port Klang to Tanjung Keling | 200 000 | 01/09/2015 |
| 201 | Malacca Strait - Tanjung Keling to Western Entrance of Singapore Strait | 200 000 | 15/08/2014 |
| 202 | Singapore Strait | 200 000 | 15/09/2016 |
| 500 | Malacca and Singapore Straits - Pulau Pisang to Raffles Lighthouse | 75 000 | 26/09/2013 |
| 501 | Singapore Strait - Western Part | 50 000 | 01/09/2015 |
| 502 | Singapore Strait - Eastern Part | 50 000 | 01/09/2015 |
| 503 | South China Sea - Eastern Approaches and Entrance to Singapore Strait | 75 000 | 15/08/2014 |
| - | Charts for Small Craft - Singapore Port Waters and Approaches | 10 000 to 200 000 | January 2016 |
| 1 | Symbols Abbreviations Terms and S57 Objects used on Singapore Nautical and Electronic Navigational Charts Available at MPA website: http://www.mpa.gov.sg/web/portal/home/publications/charts-symbols-and-abbreviations | - | 28/07/2011 |

I
INDEX OF CHARTS AND PUBLICATIONS

DUAL-BADGED CHARTS



I
INDEX OF CHARTS AND PUBLICATIONS

DUAL-BADGED CHARTS

| Chart No. | Chart Title | Scale 1: | Date Published of Latest Edition |
|------------------|---|-----------------|---|
| 4030 | Port of Singapore West Jurong Anchorages and Temasek Fairway | 10 000 | 17/03/2016 |
| 4031 | Port of Singapore Western Approaches to Jurong Island | 10 000 | 17/03/2016 |
| 4032 | Port of Singapore Sinki Fairway | 10 000 | 04/08/2016 |
| 4033 | Port of Singapore Tuas Bay, West Jurong Channel and Pesek Basin | 10 000 | 17/03/2016 |
| 4034 | Port of Singapore East Jurong Channel, Pasir Panjang Terminal and West Keppel Fairway | 10 000 | 04/08/2016 |
| 4035 | Port of Singapore Western Anchorages, Jong Fairway and Cruise Bay | 10 000 | 28/05/2015 |
| 4036 | Port of Singapore Raffles Lighthouse to The Sisters | 10 000 | 28/05/2015 |
| 4037 | Port of Singapore Keppel Harbour, Tanjong Pagar Terminal and Approaches | 10 000 | 28/05/2015 |
| 4038 | Malaysia and Singapore Johor Strait - Western Part | 30 000 | 25/02/2016 |
| 4039 | Indonesia, Singapore and Malaysia Western Approaches to Main Strait | 30 000 | 24/04/2014 |
| 4040 | Singapore, Indonesia and Malaysia Tuas View to Pulau Sakijang Bendera (St. John's Island) | 30 000 | 27/08/2015 |
| 4041 | Singapore and Indonesia Pulau Sebarok to Changi | 30 000 | 27/08/2015 |

I
INDEX OF CHARTS AND PUBLICATIONS

DUAL-BADGED CHARTS

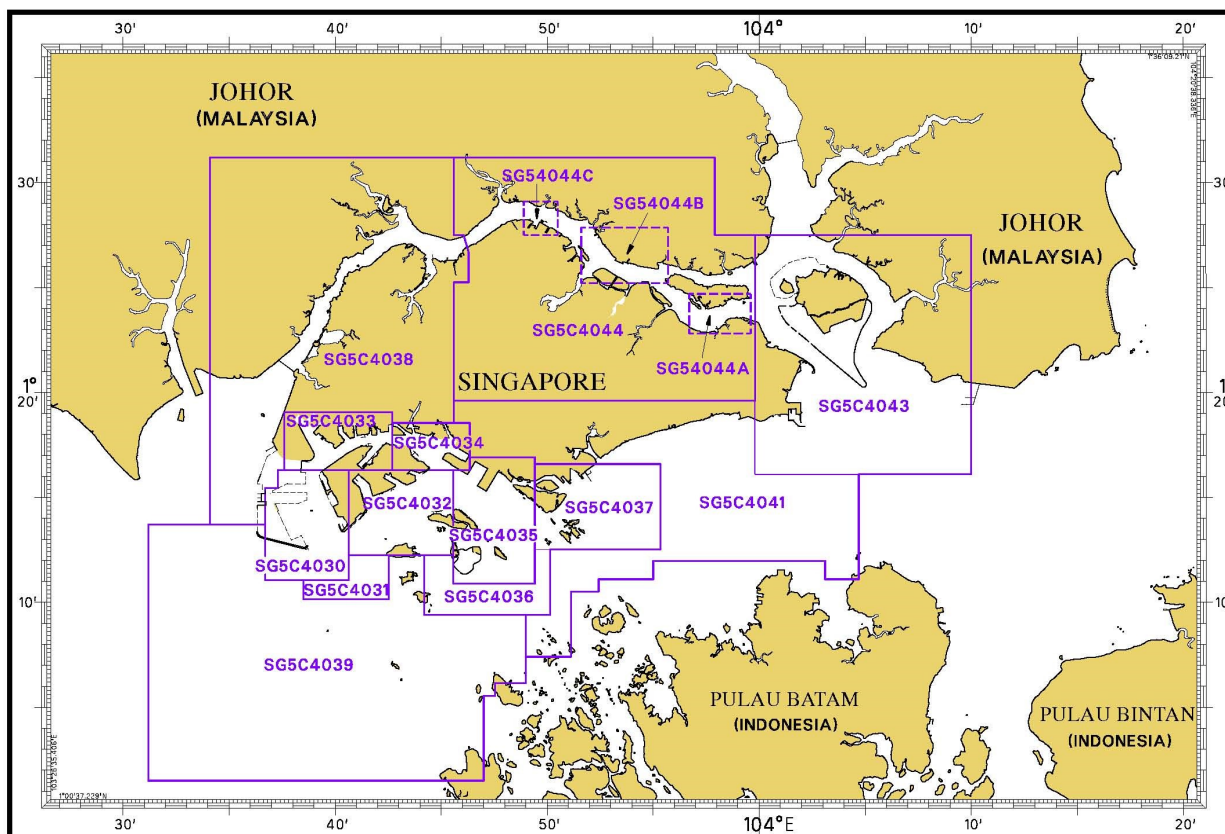
| Chart No. | Chart Title | Scale 1: | Date Published of Latest Edition |
|------------------|---|-----------------|---|
| 4042 | Indonesia, Malaysia and Singapore Changi to Pulau Mungging and Tanjung Buntan to Tanjung Tondang | 30 000 | 24/04/2014 |
| 4043 | Malaysia and Singapore Kuala Johor and Sungai Johor | 30 000 | 16/06/2016 |
| 4044 | Singapore and Malaysia Johor Strait - Eastern Part | 30 000 | 16/06/2016 |

SINGAPOREAN PUBLICATIONS

| Item | Title | Date Published of Latest Edition |
|-------------|--------------------------------------|---|
| 1 | Singapore Tide Tables Year 2016 | 09/09/2015 |
| 2 | Singapore Tide Tables Year 2017 | 09/09/2016 |
| 3 | Singapore Port Information 2016/2017 | 04/01/2016 |

I INDEX OF CHARTS AND PUBLICATIONS

INDEX OF SINGAPORE ELECTRONIC NAVIGATIONAL CHART (ENC)



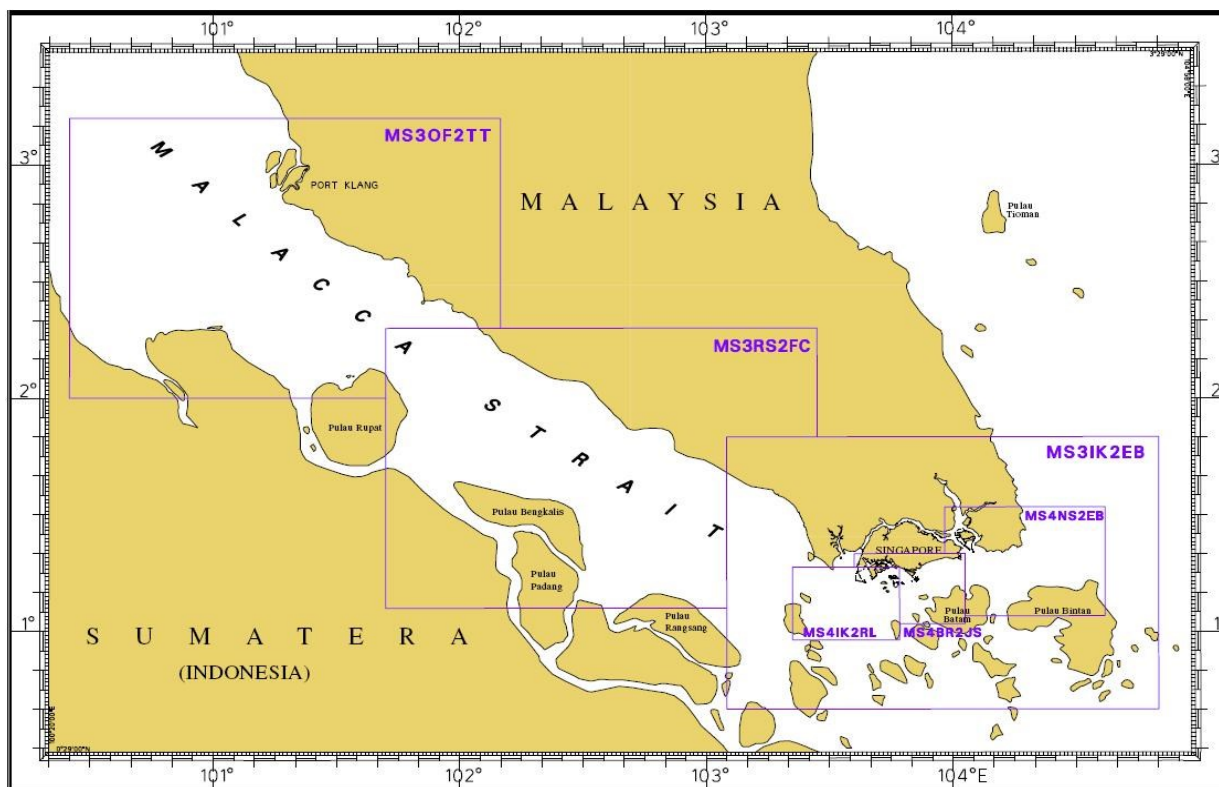
SINGAPORE ELECTRONIC NAVIGATIONAL CHART (ENC)

| ENC Name | ENC Coverage | ENC Edition |
|----------|---|---------------------------|
| SG5C4030 | West Jurong Anchorages and Temasek Fairway | 9th Edition (17/03/2016) |
| SG5C4031 | Western Approaches to Jurong Island | 8th Edition (17/03/2016) |
| SG5C4032 | Sinki Fairway | 11th Edition (4/08/2016) |
| SG5C4033 | Tuas Bay, West Jurong Channel and Pesek Basin | 9th Edition (17/03/2016) |
| SG5C4034 | East Jurong Channel, Pasir Panjang Terminal and West Keppel Fairway | 14th Edition (4/08/2016) |
| SG5C4035 | Western Anchorages, Jong Fairway and Cruise Bay | 18th Edition (4/08/2016) |
| SG5C4036 | Raffles Lighthouse to The Sisters | 9th Edition (28/05/2015) |
| SG5C4037 | Keppel Harbour, Tanjong Pagar Terminal and Approaches | 9th Edition (28/05/2015) |
| SG5C4038 | Johor Strait - Western Part | 9th Edition (25/02/2016) |
| SG5C4039 | Western Approaches to Main Strait | 8th Edition (27/08/2015) |
| SG5C4041 | Pulau Sebarok to Changi | 9th Edition (27/08/2015) |
| SG5C4043 | Kuala Johor | 12th Edition (16/06/2016) |
| SG5C4044 | Johor Strait - Eastern Part | 12th Edition (16/06/2016) |
| SG54044A | Serangoon Harbour | 3rd Edition (16/06/2016) |
| SG54044B | Pelabuhan Johor (Johor Port) | 3rd Edition (16/06/2016) |
| SG54044C | Sembawang | 3rd Edition (16/06/2016) |

The latest edition of the Singapore ENC covering Singapore Waters and their approaches can be found in our monthly Singaporean Notices to Mariners at MPA website: <http://www.mpa.gov.sg/web/portal/home/port-of-singapore/port-operations/charts-tidal-information-aids-to-navigation-hydrography/nautical-charts/singapore-electronic-navigationalchart-enc>

I INDEX OF CHARTS AND PUBLICATIONS

INDEX OF MALACCA AND SINGAPORE STRAITS ELECTRONIC NAVIGATIONAL CHART (MSS-ENC)



MALACCA AND SINGAPORE STRAITS ELECTRONIC NAVIGATIONAL CHART (MSS-ENC)

| ENC Name | ENC Coverage | ENC Edition |
|----------|-----------------------------------|--------------------------|
| MS30F2TT | One Fathom Bank to Tanjung Keling | 4th Edition (10/12/2015) |
| MS3RS2FC | Raleigh Shoal to Fair Channel | 6th Edition (15/03/2016) |
| MS3IK2EB | Iyu Kechil to Eastern Bank | 6th Edition (15/03/2016) |
| MS4IK2RL | Iyu Kechil to Raffles Lighthouse | 7th Edition (10/12/2015) |
| MS4BR2JS | Buffalo Rock to Johor Shoal | 8th Edition (10/12/2015) |
| MS4NS2EB | Nongsa to Eastern Bank | 7th Edition (1/07/2014) |

For further information, please contact:
Japan Hydrographic Association (JHA)
Email: enc-support@jha.jp

Website: http://www.jha.or.jp/en/jha/purchase/distributors_world.html

II

NEW CHARTS AND PUBLICATIONS

PORT APPROACH GUIDES FOR SINGAPORE PUBLISHED ON 15TH SEPTEMBER 2016

The United Kingdom Hydrographic Office (UKHO) has launched three new Port Approach Guides to assist with passage planning in the approaches to the Port of Singapore. These charts are published jointly by the United Kingdom Hydrographic Office and Maritime and Port Authority of Singapore.

The three new Port Approach Guides are as follows:

Chart Number : 8175
Title : Port Approach Guide Singapore,
 Tuas View to Pasir Panjang Terminal
 including Jurong Channel
Coverage : Lat 01° 12·00' N 01° 19·66' N
 Long 103° 34·50' E 103° 46·51' E
Scale : 1 : 21 500
Date Published : 15th September 2016
Size of Chart : 1036.0 x 656.0 mm

Chart Number : 8176
Title : Port Approach Guide Singapore,
 Sinki Fairway to Southern Fairway
Coverage : Lat 01° 08·80' N 01° 16·99' N
 Long 103° 38·50' E 103° 51·35' E
Scale : 1 : 23 000
Date Published : 15th September 2016
Size of Chart : 1036.0 x 656.0 mm

Chart Number : 8177
Title : Port Approach Guide Singapore,
 Southern Fairway to Changi
Coverage : Lat 01° 09·01' N 01° 19·60' N
 Long 103° 48·20' E 104° 04·70' E
Scale : 1 : 30 000
Date Published : 15th September 2016
Size of Chart : 1019.9 x 650.0 mm

Remarks : Port Approach Guides are single, port scale charts containing essential planning information for a single port. Taken from existing Admiralty charts and publications, it provides comprehensive information to assist mariners in their Singapore port entry and exit quicker and easier.

The full range of Admiralty Port Approach guides is available from the Admiralty Chart Agents. To find an Admiralty Chart Agent, please visit:
<http://www.admiralty.co.uk/how-to-buy>

II

NEW CHARTS AND PUBLICATIONS

NEW EDITION MALACCA & SINGAPORE STRAITS ENC TO BE RELEASED ON 15TH NOVEMBER 2016

ENC Name : MS3OF2TT
Location : One Fathom Bank to Tanjung Keling
Coverage : Lat 02° 00-00' N 03° 12-00' N
 Long 100° 25-00' E 102° 10-00' E
Compilation Scale : 1 : 180 000
Date Released : 15th November 2016
Description : This new edition includes updated joint hydrographic surveys carried out by the littoral States from October 2015 to March 2016 covering One Fathom Bank to Tanjung Keling. In this edition, the survey has enabled the incorporation of 1 metre contour intervals at depths ranging from 10 to 30 metres.
 The existing cell of the same name released on 1st July 2014 will be superseded.

ENC Name : MS3RS2FC
Location : Raleigh Shoal to Fair Channel
Coverage : Lat 01° 06-00' N 02° 18-00' N
 Long 101° 42-00' E 103° 27-00' E
Compilation Scale : 1 : 180 000
Date Released : 15th November 2016
Description : This new edition includes updated joint hydrographic surveys carried out by the littoral States from October 2015 to March 2016 covering Raleigh Shoal to Fair Channel. In this edition, the survey has enabled the incorporation of 1 metre contour intervals at depths ranging from 10 to 30 metres.
 The existing cell of the same name released on 1st July 2014 will be superseded.

II

NEW CHARTS AND PUBLICATIONS

NEW EDITION MALACCA & SINGAPORE STRAITS ENC TO BE RELEASED ON 15TH NOVEMBER 2016

| | | |
|--------------------------|---|---|
| ENC Name | : | MS3IK2EB |
| Location | : | Iyu Kechil to Eastern Bank |
| Coverage | : | Lat 00° 40·00' N 01° 50·00' N Long 103° 05·00' E 104° 50·00' E |
| Compilation Scale | : | 1 : 180 000 |
| Date Released | : | 15 th November 2016 |
| Description | : | This new edition includes updated joint hydrographic surveys carried out by the littoral States from October 2015 to March 2016 covering Iyu Kechil to Eastern Bank. In this edition, the survey has enabled the incorporation of 1 metre contour intervals at depths ranging from 10 to 30 metres. The existing cell of the same name released on 1 st July 2014 will be superseded. |

| | | |
|--------------------------|---|---|
| ENC Name | : | MS4IK2RL |
| Location | : | Iyu Kechil to Raffles Lighthouse |
| Coverage | : | Lat 00° 57·80' N 01° 16·50' N Long 103° 21·00' E 103° 47·00' E |
| Compilation Scale | : | 1 : 45 000 |
| Date Released | : | 15 th November 2016 |
| Description | : | This new edition includes updated joint hydrographic surveys carried out by the littoral States from October 2015 to March 2016 covering Iyu Kechil to Raffles Lighthouse. In this edition, the survey has enabled the incorporation of 1 metre contour intervals at depths ranging from 10 to 30 Metres. The existing cell of the same name released on 1 st July 2014 will be superseded. |

II

NEW CHARTS AND PUBLICATIONS

NEW EDITION MALACCA & SINGAPORE STRAITS ENC TO BE RELEASED ON 15TH NOVEMBER 2016

| | | |
|--------------------------|---|--|
| ENC Name | : | MS4BR2JS |
| Location | : | Buffalo Rock to Johor Shoal |
| Coverage | : | Lat 01° 02·00' N 01° 20·00' N Long 103° 36·00' E 104° 03·00' E |
| Compilation Scale | : | 1 : 45 000 |
| Date Released | : | 15 th November 2016 |
| Description | : | This new edition includes updated joint hydrographic surveys carried out by the littoral States from October 2015 to March 2016 covering Buffalo Rock to Johor Shoal. In this edition, the survey has enabled the incorporation of 1 metre contour intervals at depths ranging from 10 to 30 metres. The existing cell of the same name released on 1 st July 2014 will be superseded. |

| | | |
|--------------------------|---|---|
| ENC Name | : | MS4NS2EB |
| Location | : | Nongsa to Eastern Bank |
| Coverage | : | Lat 01° 04·00' N 01° 32·00' N Long 103° 58·00' E 104° 37·00' E |
| Compilation Scale | : | 1 : 45 000 |
| Date Released | : | 15 th November 2016 |
| Description | : | This new edition includes updated joint hydrographic surveys carried out by the littoral States from October 2015 to March 2016 covering Nongsa to Eastern Bank. In this edition, the survey has enabled the incorporation of 1 metre contour intervals at depths ranging from 10 to 30 metres. The existing cell of the same name released on 1 st July 2014 will be superseded. |

II

NEW CHARTS AND PUBLICATIONS

SINGAPORE TIDE TABLES YEAR 2017 PUBLISHED ON 9TH SEPTEMBER 2016

Summary of Publication

This publication contains Tidal Height and Tidal Stream Predictions covering stations in Singapore Port Waters and along the Straits of Malacca and Singapore.

This publication consists of 5 segments.

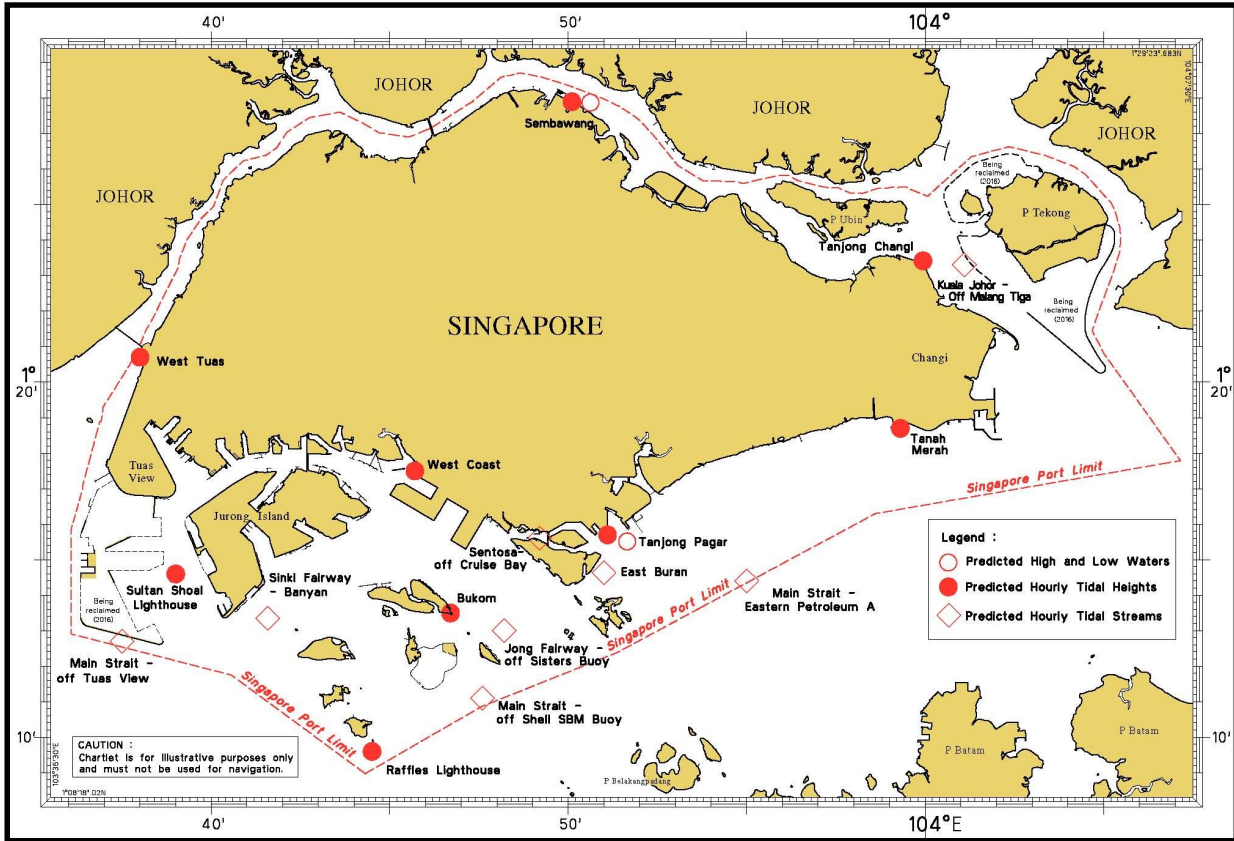


1. **High and Low Water Predictions** at the following stations:
 - a) Tanjong Pagar
 - b) Sembawang
2. **Hourly Tidal Height Predictions** at the following stations:
 - a) West Tuas
 - b) Sultan Shoal Lighthouse
 - c) Raffles Lighthouse
 - d) West Coast
 - e) Bukom
 - f) Tanjong Pagar
 - g) Tanah Merah
 - h) Tanjong Changi
 - i) Sembawang
 - j) Singapore Strait - Horsburgh Lighthouse
3. **Hourly Tidal Stream Predictions** at the following stations:
 - a) Main Strait - off Tuas View
 - b) Sinki Fairway - Banyan
 - c) Jong Fairway - off Sisters Buoy
 - d) Main Strait - off Shell SBM Buoy
 - e) Sentosa - off Cruise Bay
 - f) East Buran
 - g) Main Strait - Eastern Petroleum A
 - h) Kuala Johor - off Malang Tiga
4. **Maximum and Slack Tidal Stream Predictions** at the following stations
 - a) Malacca Strait - off Pulau Iyu Kecil Light
 - b) Singapore Strait - Selat Philip
 - c) Singapore Strait - Karang Banteng (Buffalo Rock)
 - d) Singapore Strait - Horsburgh Lighthouse
5. **Malacca Strait - High and Low Water Predictions** at the following stations:
 - a) Kedah Pier, Pulau Pinang
 - b) Port Dickson
 - c) Kuala Batu Pahat

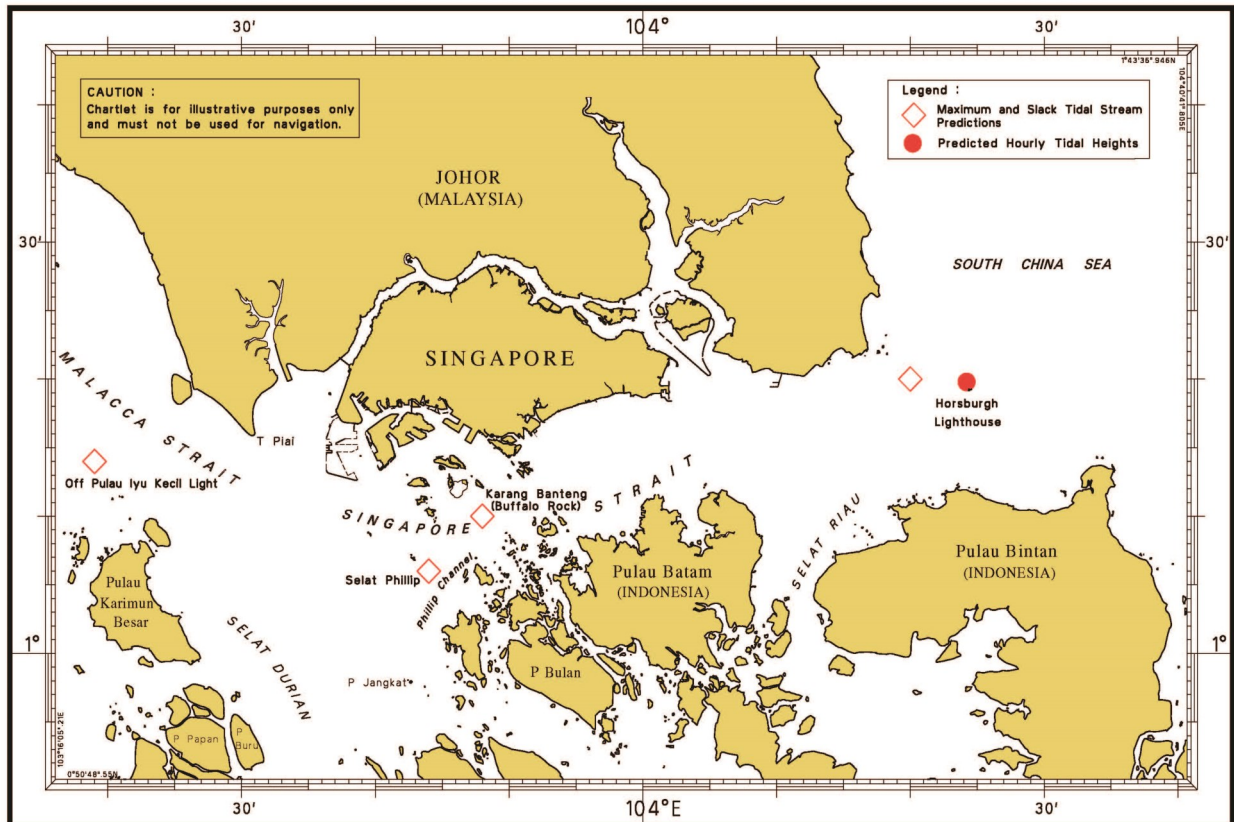
The locations of the above stations are shown in the chartlets below:

II NEW CHARTS AND PUBLICATIONS

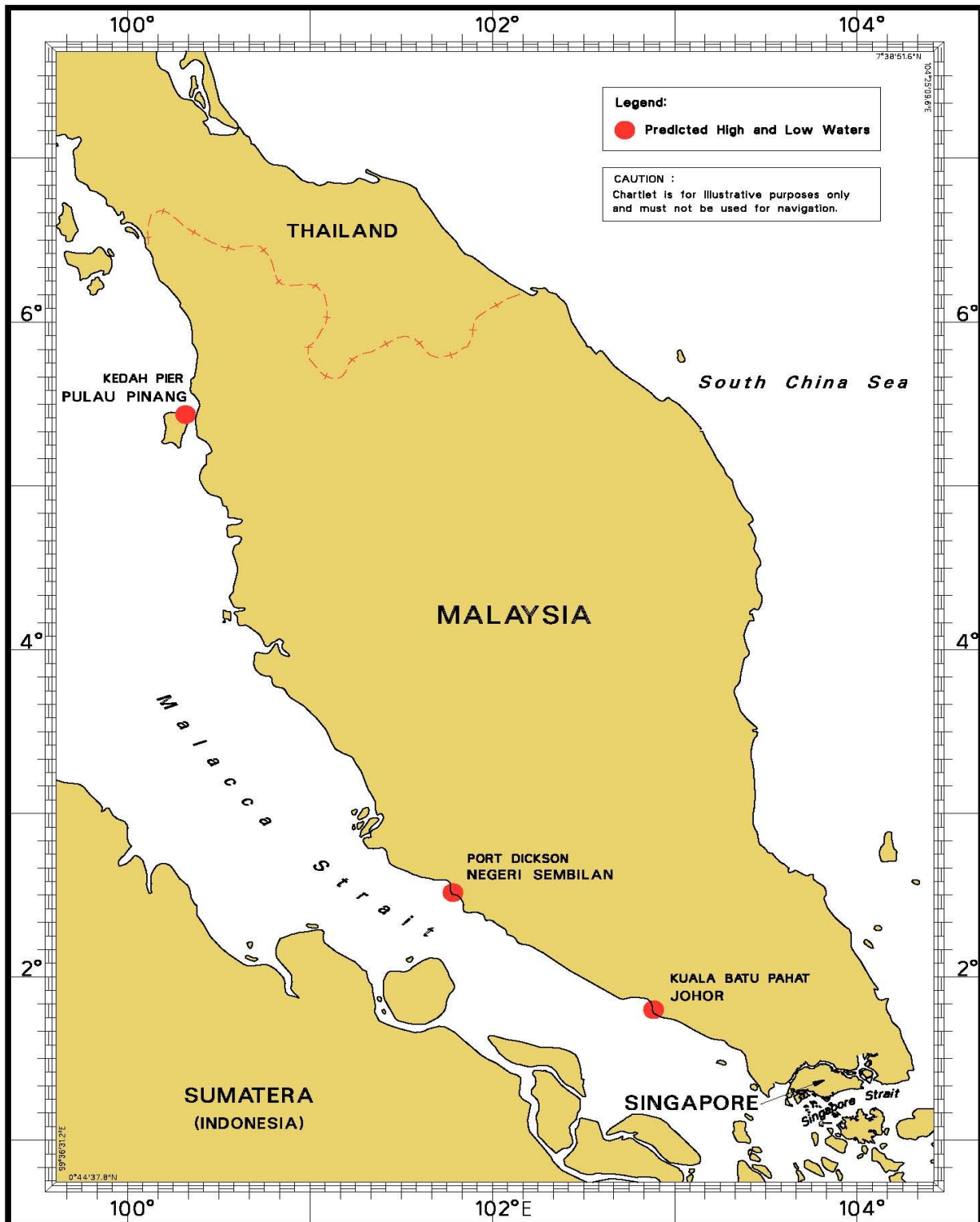
Tidal Prediction Stations within Singapore Port Waters



Tidal Prediction Stations in Straits of Malacca and Singapore



II
NEW CHARTS AND PUBLICATIONS
Tidal Prediction Stations in Malacca Strait



This publication is available from the following Chart Distributors:

1. Chartco (Singapore) Pte Ltd
2. Cornes (Singapore) Pte Ltd
3. E.W. Limer Charts & Publications Pte Ltd
4. Global Navigation Solutions Pte Ltd
5. Motion Smith

(Please refer Page 28 for details)


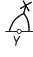
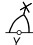
II

NOTICES TO MARINERS AND CHART CORRECTIONS

| | | | |
|-----------------|---|--|-----------------------|
| GSP1/SP1 | 1 Ed 15/02/16 Last NM 56/2016 | (Dual-Badged Chart 4043 Edition 16/6/2016) | NM 71/2016 |
| Amend | designation of buoy to, BC5 | | 1°26·41'N 104°01·38'E |
| | | (Maritime and Port Authority of Singapore) | NM 72/2016 |
| Insert |  Fl.Y.8s, TK-MB-7 | | 1°20·71'N 104°04·21'E |
| |  Fl.Y.8s, TK-MB-8 | | 1°20·83'N 104°04·06'E |
| 201 | 5 Ed 15/08/14 Last NM 61/2016 | (Indonesian Notice No 37/463-464/16) | NM 73/2016 |
| Insert |  | (a) | 1°09·78'N 103°25·50'E |
| |  Al.Oc.BuY.3s , close N of: | (a) | above |
| 202 | 8 Ed 15/09/16 | (Indonesian Notice No 37/463-464/16) | NM 73/2016 |
| Insert |  | (a) | 1°09·78'N 103°25·50'E |
| |  Al.Oc.BuY.3s , close N of: | (a) | above |
| 500 | 7 Ed 26/09/13 Last NM 62/2016 | (Indonesian Notice No 37/463-464/16) | NM 73/2016 |
| Insert |  | (a) | 1°09·78'N 103°25·50'E |
| |  Al.Oc.BuY.3s , close N of: | (a) | above |
| 502 | 7 Ed 01/09/15 Last NM 51/2016 | (Maritime and Port Authority of Singapore) | NM 72/2016 |
| Insert |  Fl.Y.8s, TK-MB-7 | | 1°20·71'N 104°04·21'E |
| |  Fl.Y.8s, TK-MB-8 | | 1°20·83'N 104°04·06'E |
| | | (Malaysia Marine Department Notice No. 86/2016) | NM 74/2016 |
| Insert |  Fl.Y.5s | | 1°21·14'N 104°15·44'E |
| |  Fl.Y.5s | | 1°20·96'N 104°14·43'E |
| |  Fl.Y.5s | | 1°21·96'N 104°14·40'E |

II

NOTICES TO MARINERS AND CHART CORRECTIONS

| | | | | |
|---------------|--|--|-----------|-------------------|
| 503 | 5 Ed 15/08/14 Last NM 63/2016 | (Malaysia Marine Department Notice No. 86/2016) | | NM 74/2016 |
| Insert |  Fl.Y.5s | | 1°21·14'N | 104°15·44'E |
| |  Fl.Y.5s | | 1°20·96'N | 104°14·43'E |
| |  Fl.Y.5s | | 1°21·96'N | 104°14·40'E |

II
TEMPORARY AND PRELIMINARY NOTICES

NIL

III
NAVIGATIONAL INFORMATION

***(NM 75/2016) SINGAPORE PORT MARINE NOTICES/CIRCULARS**

The Port Marine Notices/Circulars shortlisted below would be of particular interest to Mariners. Details and complete list of Port Marine Notices/Circulars are available at this link:

<http://www.mpa.gov.sg/web/portal/home/port-of-singapore/circulars-and-notices>

| PMN No. | Subject |
|----------------|---|
| 104/2016 | Caisson towing operations at Tuas reclamation area |
| 106/2016 | Repair of submarine cable off Tuas View extension, Johor Strait |
| 107/2016 | Reclamation work at Pulau Tekong |
| 108/2016 | Mooring and unmooring of vessels off Pulau Tekong |
| 109/2016 | Reclamation work at western part of Tuas View extension |
| 113/2016 | Reclamation work off Temasek Fairway, west of Jurong Island |
| 114/2016 | Mooring and unmooring of vessels off Jurong Island, off Temasek Fairway |

*Source: Maritime and Port Authority of Singapore

III
AMENDMENTS TO PUBLICATIONS

*(NM 76/2016) UPDATING OF PUBLICATION "SINGAPORE PORT INFORMATION 2016/2017"

LEAST DEPTH OF ANCHORAGES

1. Page 104 & 105

Amend the following:

| No. | Anchorage | Depth (m) | Latitude (N) Longitude (E) |
|-----|--|---|-------------------------------|
| 1 | Changi Barge Temporary Holding (ACBTH) | 5.0 | 1°20-670' 104°02-989' |
| 2 | Changi General Purposes (ACGP) | 18.3 | 1°18-998' 104°04-140' |
| | | 12.0 | 1°19-992' 104°03-171' |
| 5 | Eastern Bunkering B (AEBB) | 29.5 | 1°16-942' 103°59-844' |
| 11 | Eastern Bunkering C (AEBC) | 22.9 | 1°16-595' 103°55-590' |
| | | (High spot of 21.5m exists approximately 307° x 386m from Forward Buoy) | 1°16-628' 103°55-305' |
| 14 | Eastern (AEW) (10m shoal) | 7.2 | 1°15-305' 103°52-332' |
| | (East of 10m shoal) | 10.5 | 1°15-734' 103°53-285' |
| | (South of 15m shoal) | 12.9 | 1°15-626' 103°53-792' |
| 16 | Eastern Holding C (AEHC) | 6.8 | 1°14-974' 103°51-950' |
| 31 | Sudong Holding (ASH) | 23.1 | 1°12-048' 103°39-977' |
| 32 | Very Large Crude Carrier (AVLCC) | 22.6 | 1°13-562' 103°39-177' |
| | | (High spot of 21.1m exists approximately 241° x 659m from Temasek Buoy) | 1°13-609' 103°39-189' |

III AMENDMENTS TO PUBLICATIONS

CONTROLLING DEPTHS OF NAVIGATIONAL CHANNELS AND FAIRWAYS

2. Page 109

Amend the following:

| LOCATIONS | | DEPTHS (m) | REMARKS |
|---------------------|-------------------------------|--|---|
| West Jurong Channel | | 12.0 | Note: A high spot of 11.6m exists. (approximately 052° x 428m from Pesek Buoy) |
| Sinki Fairway | Selat Sinki (dredged channel) | 18.1 | Note: A high spot of 11.5m (rock) exists. (approximately 198° x 615m from Pandan Beacon) |
| | Selat Pandan | 14.4 | Note: (Depth 14.4m at Sawa Buoy) |
| East Jurong Channel | Deep water channel | 16.5 (E Cyrene Buoy to Seraya Buoy) | Note: (14.8m high spot off Pusing Buoy) (14.9m high spot off Seraya Buoy) |
| | Out bound channel | 12.9 | |
| Jong Fairway | | 16.5 | Note: A high spot of 15.2m exists. (approximately 315° x 510m from First Bukom Beacon) |

DEPTHS OF RIVERS AND BASINS

3. Page 111

Insert the following:

| LOCATIONS | DEPTHS (m) | REMARKS |
|-------------|---------------|---------|
| Sakra Basin | 11.4m | |

Amend the following:

| LOCATIONS | DEPTHS (m) | REMARKS |
|---------------|---------------|---------|
| Temasek Basin | 16.4m | |

III
AMENDMENTS TO PUBLICATIONS

CHARACTERISTICS OF AIDS TO NAVIGATION

4. Page 156

APPROACHES TO TANJONG BELUNGKOR

Amend the following:

| Name of Beacon/ Buoy | Position Lat.N Long.E Deg Min | Structure, Colour & Shape | Light Characteristic | Owner |
|---------------------------------|--|--|---------------------------------|--------------|
| BC5 Buoy | 01°26·409' 104°01·382' | Double black cones point downward topmark on yellow black pillar | Q(6)W+LFI.W.15s | - |

5. Page 158

Pulau Tekong

Insert the following:

| Name of Beacon/ Buoy | Position Lat.N Long.E Deg Min | Structure, Colour & Shape | Light Characteristic | Owner |
|---------------------------------|--|--|---------------------------------|--------------|
| TK-MB-7 | 01°20·711' 104°04·205' | Yellow drum | Fl.Y.8s | Santarli |
| TK-MB-8 | 01°20·834' 104°04·060' | Yellow drum | Fl.Y.8s | Santarli |

WHARVES AND BERTHS

6. Page 164

12 JURONG ISLAND (EXXONMOBIL ASIA PACIFIC PTE LTD)(1°16·8'N, 103°41·5'E)

Amend the following:

| Berth | Length of Berth Box | Max LOA | Depth Alongside (Year Surveyed) | Controlling Depth in Approaches |
|---------------------|--------------------------------|----------------|--|--|
| Solid Handling Pier | 252m | 180m | 11·5m (2016) | 12.1m |

III
AMENDMENTS TO PUBLICATIONS

WHARVES AND BERTHS

7. Page 166

20 JURONG ISLAND (SINGAPORE REFINING CO PTE LTD)(1°17·6'N, 103°43·0'E)**Amend** the following:

| Berth | Length of Berth Box | LOA of Vessel | Depth Alongside (Year Surveyed) | Controlling Depth in Approaches |
|--------------|----------------------------|----------------------|--|--|
| 3 | 192m | 45m - 160m | 10·9m (2016) | 12·1m |

*Source: Maritime and Port Authority of Singapore

IV REPRINT OF RADIO NAVIGATIONAL WARNINGS

The following Radio Navigational Warnings have been shortlisted, as they would be of particular interest to mariners.

TT175

VESSELS IN EAST JOHOR STRAIT ARE ADVISED TO NAVIGATE WITH PARTICULAR ALERTNESS AND CAUTION WHEN NEAR PROJECT AREAS OFF PULAU TEKONG, CHANGI AND MALANG PAPAN AS SHALLOW WATER AREA EXIST. VESSELS ARE REMINDED TO PROCEED AT SAFE SPEED AND MAINTAIN A PROPER LOOKOUT, PARTICULARLY FOR TUGS AND BARGES NAVIGATING NEAR THE PROJECT AREAS AND PASSENGER FERRIES CROSSING BETWEEN CHANGI AND PULAU TEKONG AND VICINITY OF PASIR GUDANG.

TT273

ALL VESSELS ARE ADVISED TO NAVIGATE WITH CAUTION, COMPLY WITH THE INTERNATIONAL COLLISION REGULATIONS, MAINTAIN VHF RADIO WATCH AND LISTEN TO TRAFFIC INFORMATION WHEN NAVIGATING IN THE SINGAPORE STRAIT AND PORT WATERS. MARINERS ARE ALSO ADVISED TO KEEP A GOOD LOOKOUT OF FREQUENT FERRIES CROSSING THE SINGAPORE STRAIT.

TT356

TAKONG BEACON Q(6)+LFL.15S IN POSITION LAT 01-05.891'N LONG 103-43.167'E IS REPORTED DIMLY LIT. ALL VESSELS PASSING THE VICINITY ARE ADVISED TO NAVIGATE WITH EXTRA CAUTION.

TT357

TEKONG 3 BUOY IN POSITION LAT 01-23.350'N LONG 01-05.891'E IS REPORTED UNLIT. ALL VESSELS PASSING THE VICINITY ARE ADVISED TO NAVIGATE WITH EXTRA CAUTION.

TT359

CABLESHIP 'ASEAN PROTECTOR' WILL BE CARRYING OUT SUBMARINE CABLE REPAIR OPERATIONS AT THE FOLLOWING CO-ORDINATES:

| | | | |
|----------|----|-------------|--------------|
| WAYPOINT | 1 | 01-17.158'N | 103-36.957'E |
| TO | 2 | 01-16.597'N | 103-36.351'E |
| TO | 3 | 01-15.776'N | 103-36.134'E |
| TO | 4 | 01-14.888'N | 103-36.068'E |
| TO | 5 | 01-13.392'N | 103-35.931'E |
| TO | 6 | 01-10.969'N | 103-35.703'E |
| TO | 7 | 01-10.869'N | 103-35.648'E |
| TO | 8 | 01-10.814'N | 103-35.574'E |
| TO | 9 | 01-10.770'N | 103-35.399'E |
| TO | 10 | 01-10.766'N | 103-35.301'E |
| TO | 11 | 01-10.885'N | 103-34.189'E |
| TO | 12 | 01-11.059'N | 103-32.913'E |

VESSEL ARE REQUESTED TO KEEP A LOOKOUT AND KEEP CLEAR OF THE OPERATIONS AREA.

TT363

MARINERS ARE REMINDED NOT TO ANCHOR IN ALL AREAS IN THE TSS OF THE STRAITS OF MALACCA AND SINGAPORE AS WELL AS BETWEEN THE LANDWARD LIMITS OF THE TSS AND APPROACHES TO THE PORTS. VESSELS ENTERING ANY PORT IN ANY LITTORAL STATES ARE TO ANCHOR IN THE ANCHORAGES DESIGNATED BY THE RESPECTIVE LITTORAL STATES ONLY.

TT961

VESSELS INTENDING TO CROSS THE TRAFFIC SEPERATION SCHEME (TSS) OR PRECAUTIONARY AREAS IN THE SINGAPORE STRAIT DURING HOURS OF DARKNESS ARE RECOMMENDED TO DISPLAY THE NIGHT SIGNALS CONSISTING OF 3 ALL ROUND GREEN LIGHTS IN A VERTICAL LINE AS DETAILED IN MARITIME AND PORT AUTHORITY OF SINGAPORE'S PORT MARINE CIRCULAR, 02 OF 2011 DATED 30 MAY 2011.

SR123

SEA ROBBERIES ARE REPORTED IN THE SINGAPORE STRAIT. ALL VESSELS ARE REMINDED TO MAINTAIN A PROPER LOOK-OUT AND REPORT ANY SUSPICIOUS CRAFT TO VTIS SINGAPORE.

ISSUED BY SINGAPORE PORT OPERATIONS CONTROL CENTRE (as at 30th OCT 2016)

V
EXTRACT OF ADMIRALTY NOTICES TO MARINERS
FOR DUAL-BADGED CHARTS

These notices can also be accessed directly from UKHO Website:

<http://www.admiralty.co.uk/maritime-safety-information/admiralty-notices-to-mariners>

5246 MALAYSIA - Peninsular Malaysia, West Coast - Approaches to Pelabuhan Tanjung Pelepas - Buoy.

Source: Malaysian Notice 8/167/16

Chart 4038 [previous update 4636/16] WGS84 DATUM

Insert  **Fl.Y.5s MDC-LPJ**

1°16'·01N., 103°32'·90E.

Updated to Admiralty Notices to Mariners No. 43 of 2016 dated 27th Oct 2016

SINGAPORE ENC DISTRIBUTORS

| ENC DISTRBUTOR | ADDRESS | TEL/FAX/EMAIL/WEBSITE |
|--|---|---|
| C-MAP Norway AS | Hovlandsveien 52, 4374, Egersund Norway | Tel: +47 51 46 4700 Fax: +47 51 46 4701 Email: enc@c-map.com Website: http://www.c-map.com |
| Chartworld GmbH | Atlantic Haus, Zirkusweg 1 D-20359 Hamburg, Germany | Tel: +49 40 853 58 6942 Fax: +49 40 853 58 6949 Email: sales@chartworld.com |
| Chartworld Asia Pacific Pte Ltd | Frontech Centre 07-01 15 Jalan Kilang Barat Singapore 159357 | Tel: +65 6513 3500 Website: http://www.chartworld.com http://www.ecdis-as-a-service.com |
| Global Navigation Solutions Pte Ltd | 2 Boon Leat Terrace #05-02/03/04, Harbourside Building 2 Singapore 119844 | Tel: +65 62704060 Fax: +65 62763858 Email: sg.info@gnsworldwide.com Website: www.gnsworldwide.com |
| Japan Hydrographic Association (Electronic Charts Division) | Daiichi Sogo Bldg, 6F 1-6-6, Hanedakuko, Ota-ku Tokyo 144-0041 Japan | Tel: +81 3 5708 7093 Fax: +81 3 5708 7094 Email: shimizu-6kj@jha.jp Website: http://www.jha.or.jp/en/jha/ |
| Maritime Information Systems (MARIS) | 52, Telok Blangah Road #01-06 Telok Blangah House Singapore 058809 | Tel: +65 6276 1472 Fax: +65 6276 1473 Email: support@maris.sg Website: http://www.maris.no |
| Maritime Information System AS (MARIS) | Danholmen 25, 3128 Notteroy Norway | Tel: +47 33 30 42 50 Fax: +47 33 30 42 51 Email: sales@maris.no Website: http://www.maris.no |
| Motion Smith | 15 Jalan Kilang Barat #08-01/05 Frontech Centre Singapore 159357 | Tel: +65 6220 5098 Fax: +65 6225 4902 Email: sales@motsmith.com Website: http://www.motsmith.com |
| PRIMAR STAVANGER | Lervigsveien 36, P.O Box 60 N-4001 Stavanger, Norway | Tel: +47 51 93 9500 Fax: +47 51 93 9501 Email: sales@ecc.no Website: http://www.primar.no |
| Transas Marine Pacific Pte Ltd | Cyber Centre 16/18 Jalan Kilang Barat Off Jalan Bukit Merah Singapore 159358 | Tel: +65 6271 0200 Fax: +65 62717300 Email: navigation.asia@transas.com Website: http://www.transas.com |
| The United Kingdom Hydrographic Office | Admiralty Way, Taunton Somerset, TA1 2DN United Kingdom | Tel: +44 1823 33 7900 Fax: +44 1823 28 4077 Email: ENCS.SalesReports@ukho.gov.uk Website: http://www.ukho.gov.uk |

**Chart Distributors for the Maritime and Port Authority of Singaporean
Charts and Publications**

Please approach any of the Chart Distributors to purchase the Singaporean Charts and Publications

| CHART DISTRIBUTORS | ADDRESS | TEL/FAX/EMAIL/WEBSITE |
|---|--|--|
| Chartco (Singapore) Pte Ltd | 896 Dunearn Road #03-05 Sime Darby Centre Singapore 589472 | Tel: +65 6545 9880 Ext 65285 Fax: +65 6545 8892 Email: leslie.khoo@chartco.com Website: http://www.chartco.com |
| Cornes (Singapore) Pte Ltd | 10 Anson Road #23-06/6A International Plaza Singapore 079903 | Tel: +65 6223 8320 Fax: +65 6223 8321 Email: sales9850@cspl.sg Website: http://www.cornes-charts.com |
| E.W. Liner Charts & Publications Pte Ltd | 100, Pasir Panjang Road #05-10 Singapore 118518 | Tel: +65 6323 0773 Fax: +65 6323 0775 Email: sales@ewliner.com Website: http://www.ewliner.com |
| Global Naigation Solutions Pte Ltd | 2 Boon Leat Terrace #05-02/03/04, Harbourside Building 2 Singapore 119844 | Tel: +65 6270 4060 (After office hours: +65 9632 5268) Fax: +65 6276 3858 Email: sg.info@gnsworldwide.com Website: http://www.gnsworldwide.com |
| Motion Smith | 15 Jalan Kilang Barat #08-01/05 Frontech Centre Singapore 159357 | Tel: +65 6220 5098 (After office hours: +65 8163 9993) Fax: +65 225 4902 Email: sales@motsmith.com Website: http://www.motsmith.com |

HYDROGRAPHIC NOTE - Instructions

1. Mariners are requested to notify the Chief Hydrographer, Maritime and Port Authority of Singapore, when new or suspected dangers to navigation are discovered, changes are observed in aids to navigation or where corrections to nautical publications may be necessary. Reports, which cannot be confirmed or are lacking in certain details should not be withheld.
2. Any ambiguities of time, positioning and depth should be stressed and any firm expectation of being able to check the information provided on a following voyage should be mentioned.
3. Mariners using satellite position fixing systems, eg. GPS, should provide details of equipment and datum used (where applicable). Where bearings (true or magnetic) are taken visually or by radar to fix a position, it should include more than two objects in order to provide a check on its accuracy. A position may also be defined by bearing and distance from a conspicuous object eg. beacon, lighthouse etc.
4. The note should include a tracing or a digital image of the chart used and the details should be clearly marked.
5. Echo sounders frequently register greater depths than the advertised maximum depth for the equipment, eg. a trace appearing at 50 metres may be in fact be 550 metres or even 1050 metres for equipment whose maximum depth is 500 metres. Erroneous depths caused by 2nd transmission error can usually be recognised by the following:
 - (a) the tracing being weaker than normal for the depth registered,
 - (b) the trace appearing to pass through the transmission line,
 - (c) the feathery nature of the trace.
6. Upon receipt of a hydrographic note, a Notice to Mariners may be issued. The sender's vessel or name is quoted as the source unless the same information is also received in foreign Notices to Mariners.
7. Reports of shoals, uncharted dangers and defects in aids to navigation may also be made to the appropriate Singapore Port Operations Control Centre on VHF Channels 10, 12, 14, 68 or 73.

HYDROGRAPHIC NOTE

To:

Chief Hydrographer
Maritime and Port Authority of Singapore
7B Keppel Road #20-00 Tanjong Pagar Complex
Singapore 089055

Tel : (65) 6325 2027
Fax : (65) 6226 1076
Email : hydrographic@mpa.gov.sg

Sender's Contact Details :

Date :
Name of Vessel :
Address of Sender :
Tel : Fax :
Email :

Nature of Observation :

General Location :
Subject :
Position : Lat. Long.
Charts Used :
Date & Time of Observation :
Details :
Attachment :

Equipment Used :

Type of Position Fixing : GPS / DGPS Others :
Type of Echo Sounder :

Name and Signature :

Ship's/Company's Stamp :