



## SINGAPOREAN NOTICES TO MARINERS

SECTION	CONTENT	Page
I	Affected Charts & Publications	1
II	New Charts & Publications	3
	Notices to Mariners and Chart Corrections	12
	Temporary and Preliminary Notices	13
III	Navigational Information	14
	Amendments to Publications	15
IV	Reprint of Maritime Safety Information	17
V	Extract of Admiralty Notices to Mariners for Dual-Badged Charts	19

The monthly Notices to Mariners contain information required to keep charts and publications published by the Hydrographic Department, Maritime and Port Authority of Singapore up-to-date.

Mariners are requested to notify the Chief Hydrographer, Maritime and Port Authority of Singapore, immediately of the discovery of new or suspected dangers to navigation, observed changes to aids to navigation and ways Singaporean Charts and Publications can be improved. The Hydrographic Note on the back page should be used for this purpose.

Detailed information of charts and publications (coverage of charts, latest editions and distributors) are available on the Maritime and Port Authority Website: [www.mpa.gov.sg](http://www.mpa.gov.sg)

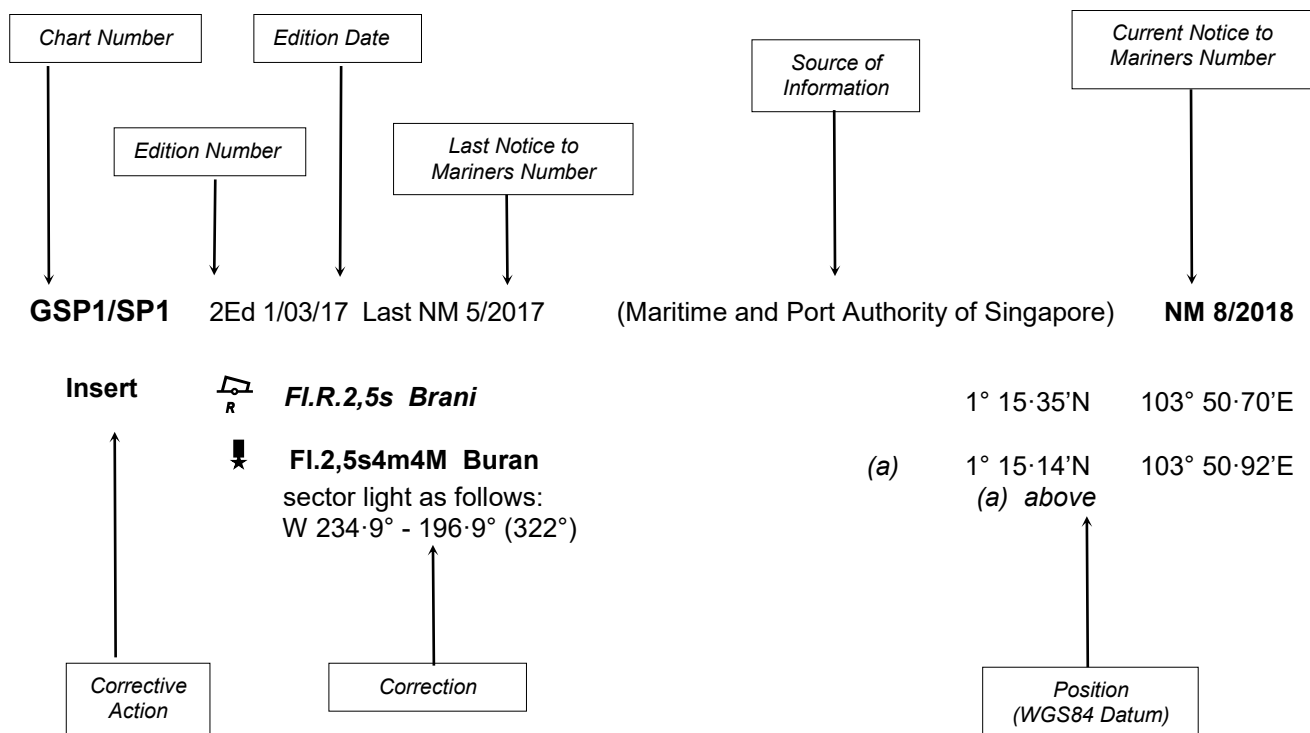
- [Singaporean Notice to Mariners](#)
- [Singaporean Charts](#)
- [Dual-Badged Charts](#)
- [Singapore ENC](#)
- [Malacca and Singapore Straits ENC](#)
- [Singapore Port Information](#)
- [Singapore Tide Tables](#)

### Contact information:

Hydrographic Department  
Maritime and Port Authority of Singapore  
7B Keppel Road  
#20-00 Tanjong Pagar Complex  
Singapore 089055  
Tel : (65) 6325 2027  
Fax : (65) 6226 1076  
Email : [hydrographic@mpa.gov.sg](mailto:hydrographic@mpa.gov.sg)

## EXPLANATION OF FORMAT

The elements of a typical chart correction are explained below.



### Notes:

- Notice to Mariners number followed by:  
**T** indicates a Temporary Notice (eg. **NM 9T/2018**).  
**P** indicates a Preliminary Notice (eg. **NM 10P/2018**).
- Bearings are true reckoned clockwise from 000° to 359°; those relating to lights are from seaward.
- Heights and elevations are above Mean High Water Springs.

I  
**AFFECTED CHARTS AND PUBLICATIONS**

**INDEX OF AFFECTED CHARTS**

<b>DESCRIPTION</b>	<b>NOTICE NO.</b>	<b>PAGE NO.</b>
New Charts and Publications	-	3 to 11
Singaporean Chart GSP1/SP1	*87	12
Singaporean Chart 200	88	12
Temporary and Preliminary Notices	89P	13
Singapore Port Marine Notices/Circulars	*90	14
Amendments to Publications	*91	15, 16
Reprint of Maritime Safety Information	-	17, 18
Extract of Admiralty Notices to Mariners for Dual-Badged Charts	-	19 to 23

\*Source: Maritime and Port Authority of Singapore

I  
**AFFECTED CHARTS AND PUBLICATIONS**

**INDEX OF NOTICES**

<b>NOTICE NO.</b>	<b>DESCRIPTION</b>	<b>PAGE NO.</b>
-	New Charts and Publications	3 to 11
*87	Singaporean Chart GSP1/SP1	12
88	Singaporean Chart 200	12
89P	Temporary and Preliminary Notices	13
*90	Singapore Port Marine Notices/Circulars	14
*91	Amendments to Publications	15, 16
-	Reprint of Maritime Safety Information	17, 18
-	Extract of Admiralty Notices to Mariners for Dual-Badged Charts	19 to 23

\*Source: Maritime and Port Authority of Singapore

## II NEW CHARTS AND PUBLICATIONS

### NEW EDITION DUAL BADGED CHARTS TO BE PUBLISHED ON 27<sup>TH</sup> DECEMBER 2018

<b>Chart Number</b>	:	4038
<b>Title</b>	:	Malaysia and Singapore Johor Strait - Western Part
<b>Coverage</b>	:	Lat 01° 10-80' N      01° 28-70' N Long 103° 28-60' E      103° 40-70' E
<b>Scale</b>	:	1 : 30 000
<b>Date Published</b>	:	27 <sup>th</sup> December 2018
<b>Size of Chart</b>	:	750.6 x 1100.2 mm
<b>Description</b>	:	This new edition includes updated submarine cables, bathymetry and topography details covering western part of Johor Strait.
		The existing chart of the same number published on 25 <sup>th</sup> February 2016 will be superseded.

---

<b>Chart Number</b>	:	4040
<b>Title</b>	:	Singapore, Indonesia and Malaysia Tuas View to Pulau Sakijang Bendera (S. John's Island)
<b>Coverage</b>	:	Lat 01° 07-40' N      01° 19-60' N Long 103° 34-10' E      103° 51-90' E
<b>Scale</b>	:	1 : 30 000
<b>Date Published</b>	:	27 <sup>th</sup> December 2018
<b>Size of Chart</b>	:	1100.6 x 749.5 mm
<b>Description</b>	:	This new edition includes updated submarine cables, bathymetry and topography details covering Tuas View to Pualu Sakijang Bendera (S. John's Island)
		The existing chart of the same number published on 4 <sup>th</sup> May 2017 will be superseded.

---

## II NEW CHARTS AND PUBLICATIONS

### NEW EDITION DUAL BADGED CHARTS TO BE PUBLISHED ON 27<sup>TH</sup> DECEMBER 2018

<b>Chart Number</b>	:	4041
<b>Title</b>	:	Singapore and Indonesia Pulau Sebarok to Changi
<b>Coverage</b>	:	Lat 01° 07·40' N      01° 19·60' N Long 103° 46·90' E      104° 04·70' E
<b>Scale</b>	:	1 : 30 000
<b>Date Published</b>	:	27 <sup>th</sup> December 2018
<b>Size of Chart</b>	:	1100.6 x 749.6 mm
<b>Description</b>	:	This new edition includes updated submarine cables, bathymetry and topography details covering Pulau Sebarok to Changi.
		The existing chart of the same number published on 4 <sup>th</sup> May 2017 will be superseded.

---

<b>Chart Number</b>	:	4043
<b>Title</b>	:	Malaysia and Singapore Kuala Johor and Sungai Johor
<b>Coverage</b>	:	Lat 01° 16·10' N      01° 34·00' N Long 103° 57·90' E      104° 10·00' E
<b>Scale</b>	:	1 : 30 000
<b>Date Published</b>	:	27 <sup>th</sup> December 2018
<b>Size of Chart</b>	:	748.1 x 1099.6 mm
<b>Description</b>	:	This new edition includes updated submarine cables, bathymetry and topography details covering Kuala Johor and Sungai Johor.
		The existing chart of the same number published on 15 <sup>th</sup> June 2017 will be superseded.

---

## II NEW CHARTS AND PUBLICATIONS

### NEW EDITION DUAL BADGED CHARTS TO BE PUBLISHED ON 27<sup>TH</sup> DECEMBER 2018

<b>Chart Number</b>	:	4044
<b>Title</b>	:	Singapore and Malaysia Johor Strait - Eastern Part
<b>Coverage</b>	:	Lat 01° 19·00' N      01° 31·20' N Long 103° 45·60' E      104° 03·40' E
<b>Scale</b>	:	1 : 30 000
<b>Date Published</b>	:	27 <sup>th</sup> December 2018
<b>Size of Chart</b>	:	1100.5 x 749.5 mm
<b>Description</b>	:	This new edition includes updated submarine cables, bathymetry and topography details covering Eastern Part of Johor Strait.
		The existing chart of the same number published on 15 <sup>th</sup> June 2017 will be superseded.

---

## II NEW CHARTS AND PUBLICATIONS

### NEW EDITION SINGAPORE ENC TO BE RELEASED ON 27<sup>TH</sup> DECEMBER 2018

<b>ENC Name</b>	:	SG5C4038
<b>Location</b>	:	Johor Strait - Western Part
<b>Coverage</b>	:	Lat 01° 13·70' N      01° 31·20' N Long 103° 34·10' E      103° 46·34' E
<b>Compilation Scale</b>	:	1 : 22 000
<b>Date Released</b>	:	27 <sup>th</sup> December 2018
<b>Description</b>	:	This new edition includes updated submarine cables, bathymetry and topography details covering western part of Johor Strait.  The existing cell of the same name released on 17 <sup>th</sup> July 2017 will be superseded.

<b>ENC Name</b>	:	SG5C4041
<b>Location</b>	:	Pulau Sebarok to Changi
<b>Coverage</b>	:	Lat 01° 07·400' N      01° 19·600' N Long 103° 45·600' E      104° 04·700' E
<b>Compilation Scale</b>	:	1 : 22 000
<b>Date Released</b>	:	27 <sup>th</sup> December 2018
<b>Description</b>	:	This new edition includes updated submarine cables, bathymetry and topography details covering Pulau Sebarok to Changi.  The existing cell of the same name released on 17 <sup>th</sup> July 2017 will be superseded.

<b>ENC Name</b>	:	SG5C4043
<b>Location</b>	:	Kuala Johor
<b>Coverage</b>	:	Lat 01° 16·10' N      01° 27·50' N Long 103° 59·80' E      104° 10·00' E
<b>Compilation Scale</b>	:	1 : 22 000
<b>Date Released</b>	:	27 <sup>th</sup> December 2018
<b>Description</b>	:	This new edition includes updated submarine cables, bathymetry and topography details covering Kuala Johor.  The existing cell of the same name released on 17 <sup>th</sup> July 2017 will be superseded.



## II NEW CHARTS AND PUBLICATIONS

### NEW EDITION SINGAPORE ENC TO BE RELEASED ON 27<sup>TH</sup> DECEMBER 2018

<b>ENC Name</b>	:	SG5C4044
<b>Location</b>	:	Johor Strait - Eastern Part
<b>Coverage</b>	:	Lat 01° 16·10' N      01° 27·50' N Long 103° 59·80' E      104° 10·00' E
<b>Compilation Scale</b>	:	1 : 22 000
<b>Date Released</b>	:	27 <sup>th</sup> December 2018
<b>Description</b>	:	This new edition includes updated submarine cables, bathymetry and topography details covering Eastern Part of Johor Strait.  The existing cell of the same name released on 17 <sup>th</sup> July 2017 will be superseded.

<b>ENC Name</b>	:	SG54044A
<b>Location</b>	:	Serangoon Harbour
<b>Coverage</b>	:	Lat 01° 22·80' N      01° 24·70' N Long 103° 56·700' E      103° 59·60' E
<b>Compilation Scale</b>	:	1 : 12 000
<b>Date Released</b>	:	27 <sup>th</sup> December 2018
<b>Description</b>	:	This new edition includes updated submarine cables, bathymetry and topography details covering Serangoon Harbour.  The existing cell of the same name released on 17 <sup>th</sup> July 2017 will be superseded.

<b>ENC Name</b>	:	SG54044B
<b>Location</b>	:	Pelabuhan Johor (Johor Port)
<b>Coverage</b>	:	Lat 01° 25·20' N      01° 27·86' N Long 103° 51·60' E      103° 55·70' E
<b>Compilation Scale</b>	:	1 : 12 000
<b>Date Released</b>	:	27 <sup>th</sup> December 2018
<b>Description</b>	:	This new edition includes updated submarine cables, bathymetry and topography details covering Pelabuhan Johor (Johor Port)  The existing cell of the same name released on 17 <sup>th</sup> July 2017 will be superseded.

## II NEW CHARTS AND PUBLICATIONS

### NEW EDITION SINGAPORE ENC TO BE RELEASED ON 27<sup>TH</sup> DECEMBER 2018

<b>ENC Name</b>	:	SG54044C
<b>Location</b>	:	Sembawang
<b>Coverage</b>	:	Lat 01° 27·50' N      01° 29·10' N Long 103° 48·90' E      103° 50·50' E
<b>Compilation Scale</b>	:	1 : 8 000
<b>Date Released</b>	:	27 <sup>th</sup> December 2018
<b>Description</b>	:	This new edition includes updated submarine cables, bathymetry and topography details covering Sembawang  The existing cell of the same name released on 17 <sup>th</sup> July 2017 will be superseded.

---

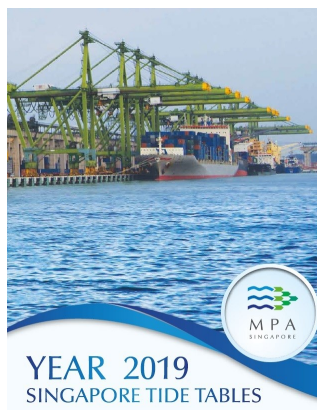
## II NEW CHARTS AND PUBLICATIONS

### SINGAPORE TIDE TABLES YEAR 2019 PUBLISHED ON 15<sup>TH</sup> SEPTEMBER 2018

#### Summary of Publication

This publication contains Tidal Height and Tidal Stream Predictions covering stations in Singapore Port Waters and along the Straits of Malacca and Singapore.

This publication consists of 5 segments.



**1. High and Low Water Predictions** at the following stations:

- a) Tanjong Pagar
- b) Sembawang

**2. Hourly Tidal Height Predictions** at the following stations:

- a) West Tuas
- b) Sultan Shoal Lighthouse
- c) Raffles Lighthouse
- d) West Coast
- e) Bukom
- f) Tanjong Pagar
- g) Tanah Merah
- h) Tanjong Changi
- i) Sembawang
- j) Singapore Strait - Horsburgh Lighthouse

**3. Hourly Tidal Stream Predictions** at the following stations:

- a) Main Strait - off Tuas View
- b) Sinki Fairway - Banyan
- c) Jong Fairway - off Sisters Buoy
- d) Main Strait - off Shell SBM Buoy
- e) Sentosa - off Cruise Bay
- f) East Buran
- g) Main Strait - Eastern Petroleum A
- h) Kuala Johor - off Malang Tiga

**4. Maximum and Slack Tidal Stream Predictions** at the following stations:

- a) Malacca Strait - off Pulau Iyu Kecil Light
- b) Singapore Strait - Selat Phillip
- c) Singapore Strait - Karang Banteng (Buffalo Rock)
- d) Singapore Strait - Horsburgh Lighthouse

**5. Malacca Strait - High and Low Water Predictions** at the following stations:

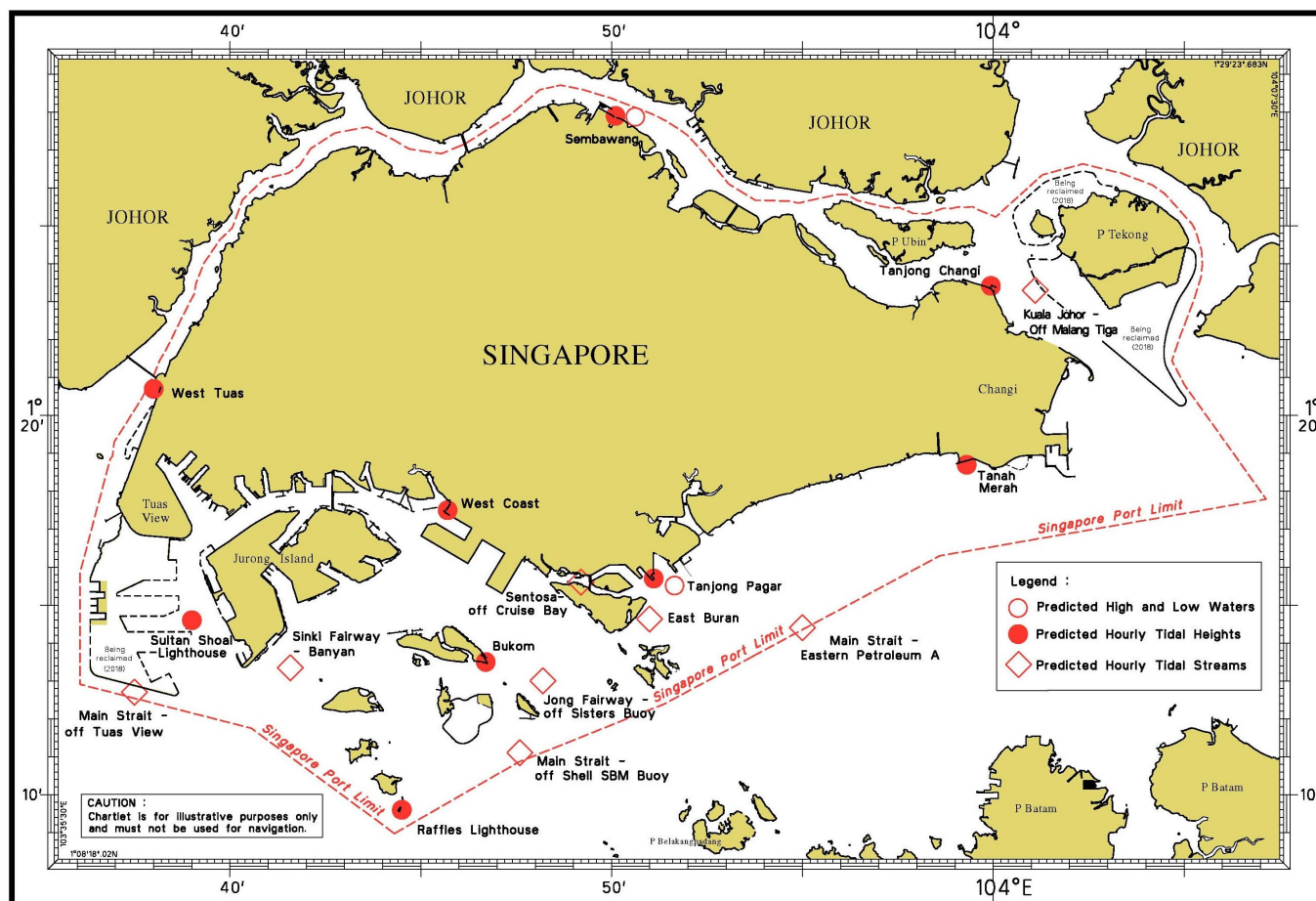
- a) Kedah Pier, Pulau Pinang
- b) Port Dickson
- c) Kuala Batu Pahat

The locations of the above stations are shown in the chartlets below:

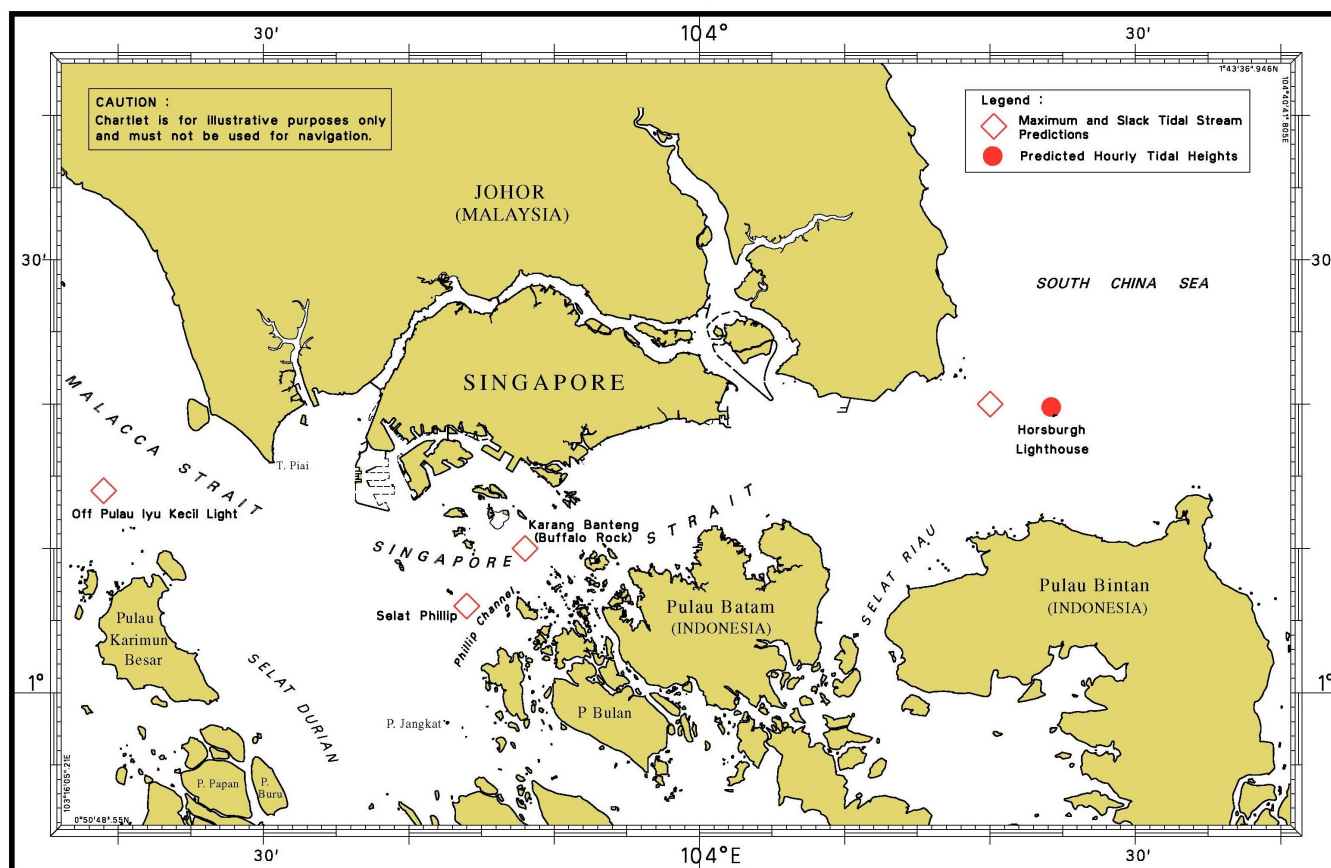
## II

## NEW CHARTS AND PUBLICATIONS

## Tidal Prediction Stations within Singapore Port Waters

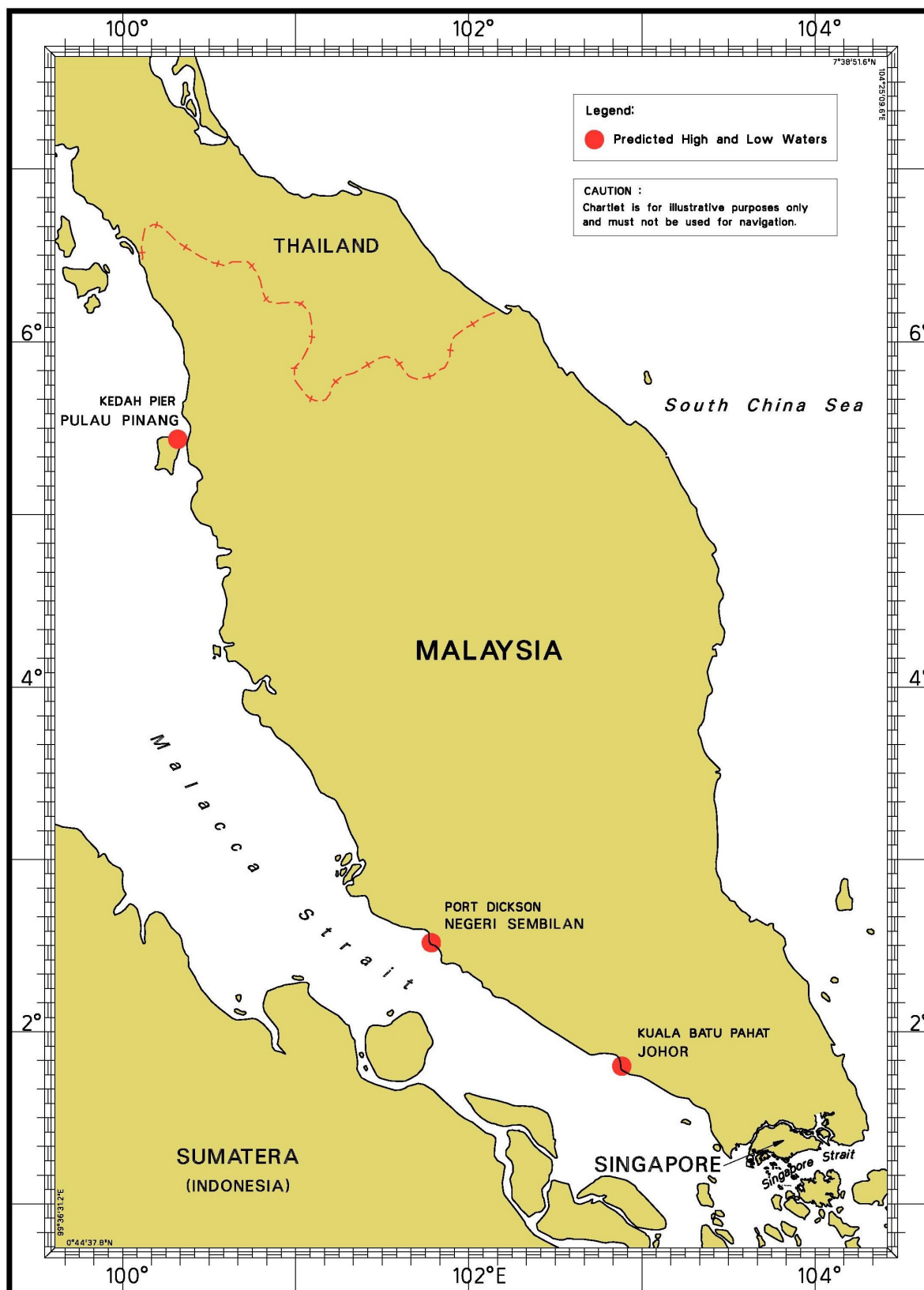


## Tidal Prediction Stations in Straits of Malacca and Singapore



## II NEW CHARTS AND PUBLICATIONS

### Tidal Prediction Stations In Malacca Strait




This publication can be purchased from any of the MPA appointed Chart Distributors.

Information on the MPA appointed Chart Distributors can be found from the following link:

<http://www.mpa.gov.sg/web/portal/home/media-centre/publications/singapore-tide-tables>

## II

## NOTICES TO MARINERS AND CHART CORRECTIONS

<b>GSP1/SP1</b>	3 Ed 15/1/18 Last NM 72/2018	(Maritime and Port Authority of Singapore)	<b>NM 87/2018</b>
<b>Delete</b>	radar beacon, AIS, at light-beacon	1°24·10'N 1°22·97'N	103°59·34'E 103°57·92'E
<hr/>			
<b>200</b>	4 Ed 1/9/15 Last NM 43/2018	(Royal Malaysian Navy Notice No. 7/149/2018)	<b>NM 88/2018</b>
<b>Delete</b>	former limit of anchorage, pecked line, joining:	(a) 2°47·47'N (b) 2°50·52'N (c) 2°48·64'N (d) 2°47·46'N (e) 2°48·06'N (f) 2°46·70'N (g) 2°47·47'N	101°15·18'E 101°15·78'E 101°19·11'E 101°19·09'E 101°16·88'E 101°16·88'E 101°15·18'E
<b>Insert</b>	legend,  <i>Lay Up</i> , within: maritime limit, pecked line, joining:	(a) - (g) above (a) 2°46·70'N (b) 2°47·45'N (c) 2°47·00'N (d) 2°46·70'N (e) 2°46·70'N	101°19·02'E 101°19·02'E 101°19·92'E 101°19·92'E 101°19·02'E
<b>Insert</b>	legend, <b>Bunkering Area</b> , within: maritime limit, pecked line, joining:	(a) - (e) above (a) 2°46·70'N (b) 2°48·59'N (c) 2°47·45'N (d) 2°46·70'N (e) 2°46·70'N	101°16·80'E 101°16·80'E 101°19·02'E 101°19·02'E 101°16·80'E
	legend, <b>Ship to Ship Transfer Area</b> , within:	(a) - (e) above	

## II

**TEMPORARY AND PRELIMINARY NOTICES****(NM 89P/2017)****SEA-ME-WE 3 (SMW3) CABLE NETWORK  
SUBMARINE CABLE DIVERSION OFF TUAS**

- Description** : Submarine cable diversion for the SEA-ME-WE 3 cable will be carried out along the Singapore Strait Routeing System off Sultan Shoal Lighthouse and in the Singapore Strait (Main Strait). (STRAITREP Sector 7).
- Survey Vessel and Call Sign** : **Asean Protector (9VYR5)**
- Survey Period** : From 5th November 2018 to 5th March 2019. 24 hours daily.

1. The co-ordinates of the working route are tabulated below:

No.	Co-ordinates (WGS84)	
	Latitude (N)	Longitude (E)
1	1° 12.581'	103° 36.772'
2	1° 12.538'	103° 36.742'
3	1° 11.979'	103° 35.934'
4	1° 11.979'	103° 35.212'
5	1° 11.925'	103° 35.119'
6	1° 11.831'	103° 35.065'
7	1° 11.088'	103° 34.881'
8	1° 06.811'	103° 32.049'
9	1° 01.514'	103° 32.845'
10	1° 01.165'	103° 32.898'

2. The submarine cable diversion will entail pre-trenching works, locating of out service cable crossings, rock cutting works and cable laying operations.
3. Charts affected: Singaporean GSP1/SP1, 202, 500, 501, Dual-Badged BA4030, BA4038 and BA4040.
4. Mariners are advised to navigate with caution and give a wide berth.
5. Navigational warning broadcast will be promulgated by Singapore VTIS on VHF CH 09, CH 73 and NAVTEX. Mariners are to maintain a listening watch.

Source : ASEAN Cables Pte Ltd

### III NAVIGATIONAL INFORMATION

**(NM 90/2018)****SINGAPORE PORT MARINE NOTICES/CIRCULARS**

The Port Marine Notices/Circulars shortlisted below would be of particular interest to Mariners. Details and complete list of Port Marine Notices/Circulars are available at this link:

<http://www.mpa.gov.sg/web/portal/home/port-of-singapore/circulars-and-notice>

<b>PMN No.</b>	<b>Subject</b>
93/2018	Anchoring of vessels off Tuas View Extension
94/2018	Reclamation work at Pulau Tekong
95/2018	Mooring and unmooring of vessels off Pulau Tekong
96/2018	Publication of New Edition Dual Badged Charts 4030, 4031, 4032, 4033, 4034, 4035, 4036 and 4037
97/2018	Kusu Pilgrimage Season 2018
98/2018	Road access to Marina South Pier during Kusu Pilgrimage Season 2018
99/2018	Works at Selat Chermin
100/2018	Reclamation work at Tuas View, off Temasek Fairway
101/2018	Mooring and unmooring of vessels at Tuas Finger One project area
102/2018	Marine soil investigation works near Pulau Sudong

---

Source: Maritime and Port Authority of Singapore



### III AMENDMENTS TO PUBLICATIONS

\*(NM 91/2018) UPDATING OF PUBLICATION “SINGAPORE PORT INFORMATION 2018/2019”

#### LEAST DEPTH OF ANCHORAGES

1. Page 104

**Amend** the following:

No.	Anchorage	Depth (m)	Latitude (N) Longitude (E)
16	Eastern Holding C (AEHC)	6.6	1°14.974' 103°51.950'

2. Page 105

**Amend** the following:

No.	Anchorage	Depth (m)	Latitude (N) Longitude (E)
17	Western Quarantine and Immigration (AWQI)	11.2	1°12.988' 103°49.817'

#### CONTROLLING DEPTHS OF NAVIGATIONAL CHANNELS AND FAIRWAYS

3. Page 109

**Amend** the following:

LOCATIONS		DEPTHS (m)	REMARKS
Sinki Fairway	Selat Sinki (dredged channel)	18.2	Note: A high spot of 11.5m (rock) exists (approximately 198° x 615m from Pandan Beacon)
	Selat Pandan	14.5	<b>Note: A high spot of 14.5m exists (approximately 052° x 596m from Sawa Buoy)</b>
East Jurong Channel	Deep Water Channel	16.5 (E Cyrene Buoy to Seraya Buoy)	Note: (14.8m high spot off Pusing Buoy) (14.9m high spot off Seraya Buoy)
	Outbound channel	12.5	-

### III AMENDMENTS TO PUBLICATIONS

#### CHARACTERISTICS OF AIDS TO NAVIGATION

4. Page 149

#### Serangoon Harbour

Amend the following:

Name Of Beacon/Buoy	Position Lat. N Long. E	Structure, Colour & Shape	Light Characteristic	Owner
Loyang Beacon	01°22'·974' 103°57'·915'	<b>Red mast on red piles</b>	DirFl(2)WRG. 10s6m10-8M G128°-129°(1°) W129°-133°(4°) R133°-135°(2°)	MPA
Malang Papan Beacon	01°24'·102' 103°59'·338'	<b>Green triangle on green mast on concrete base</b>	Fl.G.5s6m5M	MPA

Source: Maritime and Port Authority of Singapore

## IV

### REPRINT OF MARITIME SAFETY INFORMATION

The following Maritime Safety Information have been shortlisted, as they would be of particular interest to mariners.

#### TT175

VESSELS IN EAST JOHOR STRAIT ARE ADVISED TO NAVIGATE WITH PARTICULAR ALERTNESS AND CAUTION WHEN NEAR THE PROJECT AREAS OFF PULAU TEKONG, CHANGI AND MALANG PAPAN AS SHALLOW WATER AREAS EXIST. VESSELS ARE REMINDED TO PROCEED AT A SAFE SPEED AND MAINTAIN A PROPER LOOKOUT, PARTICULARLY FOR TUGS AND BARGES NAVIGATING NEAR THE PROJECT AREAS AND PASSENGER FERRIES CROSSING BETWEEN CHANGI AND PULAU TEKONG AND VICINITY OF PASIR GUDANG.

#### TT273

ALL VESSELS ARE ADVISED TO NAVIGATE WITH CAUTION, COMPLY WITH THE COLREGS, MAINTAIN VHF RADIO WATCH AND LISTEN TO TRAFFIC INFORMATION WHEN NAVIGATING IN THE SINGAPORE STRAIT AND PORT WATERS. MARINERS ARE ALSO ADVISED TO KEEP A GOOD LOOKOUT OF FREQUENT FERRIES CROSSING THE SINGAPORE STRAIT.

#### TT363

MARINERS ARE REMINDED NOT TO ANCHOR IN ALL AREAS IN THE TSS, INCLUDING PRECAUTIONARY AREAS OF THE STRAITS OF MALACCA AND SINGAPORE AS WELL AS BETWEEN THE LANDWARD LIMITS OF THE TSS AND APPROACHES TO THE PORTS. VESSELS ENTERING ANY PORT IN ANY LITTORAL STATES ARE TO ANCHOR IN THE ANCHORAGES DESIGNATED BY THE RESPECTIVE LITTORAL STATES ONLY.

#### TT399

VESSELS ARRIVING TO SINGAPORE OR TRANSITING THROUGH THE STRAIT ARE RECOMMENDED TO UPDATE THEIR DESTINATION ACCURATELY IN THE AIS TO ENHANCE SITUATIONAL AWARENESS FOR OTHER TRAFFIC IN THE VICINITY. EXAMPLE: SG-PEBGB FOR PILOT EASTERN BOARDING GROUND BRAVO.

#### TT418

WEST BOUND DEEP DRAFT VESSELS AND VLCCS ARE REMINDED TO COMPLY WITH THE RULES OF VESSELS NAVIGATING THROUGH THE STRAITS OF MALACCA AND SINGAPORE (SOMS). THEY SHALL ALLOW FOR AN UKC OF AT LEAST 3.5 METRES AT ALL TIMES DURING THE ENTIRE PASSAGE THROUGH THE SOMS AND AS FAR AS IT IS SAFE & PRACTICABLE, PROCEED AT A SPEED OF NOT MORE THAN 12 KTS OVER THE GROUND IN THE WESTBOUND LANE OF THE SINGAPORE STRAIT (BETWEEN SOUTH OF ST JOHN'S ISLAND & RAFFLES LIGHTHOUSE).

THEY ARE ADVISED TO BROADCAST, 8 HOURS BEFORE ENTERING THE TSS, NAVIGATIONAL INFORMATION GIVING NAME, DEADWEIGHT, DRAUGHT, SPEED AND TIMES OF PASSING HORSBURGH LIGHTHOUSE AND RAFFLES LIGHTHOUSE.

#### TT426

ALL MARINERS ARE REMINDED TO NAVIGATE WITH CAUTION IN THE PRECAUTIONARY AREAS AND TSS, MAINTAIN A GOOD LOOKOUT FOR CROSSING TRAFFIC. VESSELS INTENDING TO CROSS THE TSS SHALL DO SO ONLY WHEN IT IS SAFE AND SHALL AT ALL TIMES COMPLY WITH THE COLLISION REGULATIONS.

#### TT430 (AMENDED ON 05 OCT 0115Z)

THE FOLLOWING ATONS AIS/RACONS ARE TEMPORARILY REMOVED FOR UPGRADING.  
ATONS WITH AIS TEMPORARILY REMOVED FOR UPGRADING:

1. ANGLER BUOY
2. BANYAN BEACON
3. MALANG PAPAN BEACON
4. RASU BUOY
5. RAFFLES LIGHTHOUSE
6. SAKIJANG BEACON
7. SELEGI BEACON

MARINERS ARE ADVISED TO NAVIGATE WITH CAUTION.

#### TT440

A NUMBER OF UNKNOWN VESSELS ARE OBSERVED ANCHORED IN THE TSS/PRECAUTIONARY AREA SOUTH OF TG. RAMUNIA AT APPROXIMATE POSITION 1°17'91"N 104°14'92"E. ALL VESSELS ARE ADVISED TO KEEP A GOOD LOOKOUT AND PROCEED WITH CAUTION WHEN PASSING THIS AREA IN THE SINGAPORE STRAIT.

**IV**  
**REPRINT OF MARITIME SAFETY INFORMATION**

TT465

DGPS SERVICE AT HORSBURGH LIGHTHOUSE (REFERENCE STATION 130/131) IN POSITION 1°19·8'N 104°24·34'E IS UNAVAILABLE. MARINERS ARE ADVISED TO USE ALTERNATE REFERENCE STATION AT RAFFLES LIGHTHOUSE (REFERENCE STATION 132/133).

TT961

VESSELS INTENDING TO CROSS THE TRAFFIC SEPERATION SCHEME (TSS) OR PRECAUTIONARY AREAS IN THE SINGAPORE STRAIT DURING THE HOURS OF DARKNESS ARE RECOMMENDED TO DISPLAY THE NIGHT SIGNALS CONSISTING OF 3 ALL ROUND GREEN LIGHTS IN A VERTICAL LINE AS DETAILED IN THE MARITIME AND PORT AUTHORITY OF SINGAPORE'S PORT MARINE CIRCULAR, 04 OF 2013 DATED 7 MAY 2013.

SR123

SEA ROBBERIES ARE REPORTED IN THE SINGAPORE STRAIT. ALL VESSELS TO REPORT ANY SUSPICIOUS CRAFT TO VTIS SINGAPORE.

ALL VESSELS IN THE VICINITY ARE REQUESTED TO KEEP A SHARP LOOKOUT, RENDER NECESSARY ASSISTANCE, AND REPORT ANY SIGHTINGS TO MRSC JOHOR OR NEAREST COASTAL MALAYSIAN AUTHORITIES FOR FURTHER INSTRUCTION.

---

ISSUED BY SINGAPORE PORT OPERATIONS CONTROL CENTRE (as at 28<sup>th</sup> Oct 2018)

**V**  
**EXTRACT OF ADMIRALTY NOTICES TO MARINERS**  
**FOR DUAL-BADGED CHARTS**

**These notices can also be accessed directly from UKHO Website:**

<https://www.admiralty.co.uk/maritime-safety-information/admiralty-notices-to-mariners>

**4705 SINGAPORE - Radar beacons.**

Source: Maritime and Port Authority of Singapore

*Note:* Automatic Identification System (AIS) remains unchanged. This update is included in New Editions 4031, 4032, 4034 and 4035 published 20 September 2018.

**Chart 4040 [ previous update 4443/18 ] WGS84 DATUM**

Delete	radar beacon, Racon (G), at light-beacon	1°14·84'N	103°42·08'E
	radar beacon, Racon (M), at light-beacon	1°15·30'N	103°45·54'E

**4706 (P) SINGAPORE - Radar beacons.**

Source: Maritime and Port Authority of Singapore

1.	<b>Update</b>	<b>Feature</b>	<b>Position</b>
	Delete	radar beacon, Racon (M), at light-beacon	1°15·30'N 103°45·54'E
		radar beacon, Racon (G), at light-beacon	1°14·84'N 103°42·08'E

- Automatic Identification System (AIS) remains unchanged.
- This update is included in New Editions 4031, 4032, 4034 and 4035 published 20 September 2018.
- Charts 4040 and 3833 have been updated by Notice to Mariners.

**Charts affected - 8175 - 8176**

**4713 (P) SINGAPORE - Light.**

Source: Maritime and Port Authority of Singapore

- The sectors at Semakau light (1°12·59'N 103°46·66'E) have been amended as follows:  
 G 16·0° - 16·5° (0·5°)  
 W 16·5° - 17·5° (1·0°)  
 R 17·5° - 19·0° (1·5°)
- This changes will be included in a New Editions of Charts 4035 and 4036 to be published 20 September 2018. (WGS84 DATUM)

**Charts affected - 4039 - 4040 - 8176**

**V**  
**EXTRACT OF ADMIRALTY NOTICES TO MARINERS**  
**FOR DUAL-BADGED CHARTS**

These notices can also be accessed directly from UKHO Website:

<https://www.admiralty.co.uk/maritime-safety-information/admiralty-notices-to-mariners>

**4806 SINGAPORE STRAIT - Wreck.**

Source: Maritime and Port Authority of Singapore

**Chart 4039** [ *previous update 4443/18* ] WGS84 DATUM

Insert		1°08·92'N	103°44·10'E
--------	---	-----------	-------------

**Chart 4040** [ *previous update 4705/18* ] WGS84 DATUM

Insert		1°08·92'N	103°44·10'E
--------	---	-----------	-------------

**4845 SINGAPORE - Breakwater, Light - beacons.**

Source: Maritime and Port Authority of Singapore

**Chart 4041** [ *previous update 4443/18* ] WGS84 DATUM

Insert	breakwater, single firm line, joining:	(a) 1°18·63'N	103°59·21'E
		(b) 1°18·68'N	103°59·37'E

	FI.Y.2·5s4m7M TMFT-1	(a) above
---	----------------------	-----------

	FI.Y.2·5s4m7M TMFT-3	(b) above
---	----------------------	-----------

**Chart 4043** [ *previous update 4443/18* ] WGS84 DATUM

Insert	breakwater, single firm line, joining:	(a) 1°18·63'N	103°59·21'E
		(b) 1°18·68'N	103°59·37'E

	FI.Y.2·5s4m7M TMFT-1	(a) above
---	----------------------	-----------

	FI.Y.2·5s4m7M TMFT-3	(b) above
---	----------------------	-----------

**V**  
**EXTRACT OF ADMIRALTY NOTICES TO MARINERS**  
**FOR DUAL-BADGED CHARTS**

These notices can also be accessed directly from UKHO Website:

<https://www.admiralty.co.uk/maritime-safety-information/admiralty-notices-to-mariners>

**4971 SINGAPORE STRAIT - Buoyage.**

Source: Malaysian Department, Malaysia Notice 121/18

**Chart 4042** [ previous update 4927/18 ] WGS84 DATUM





Insert

 <b>FI(2)G.6s SPJ E1</b>	1°19·17'N	104°08·50'E
 <b>FI(2)R.6s SPJ E2</b>	1°18·95'N	104°08·39'E
 <b>FI.R.5s SPJ E3</b>	1°19·26'N	104°08·00'E
 <b>FI.G.2s SPJ W1</b>	1°19·24'N	104°06·48'E
 <b>FI.R.2s SPJ W2</b>	1°19·45'N	104°06·31'E
 <b>FI(2)G.10s SPJ W3</b>	1°19·63'N	104°07·14'E
 <b>FI(2)R.10s SPJ W4</b>	1°19·94'N	104°07·13'E

**4971 SINGAPORE STRAIT - Buoyage. (continued)**

**Chart 4043** [ previous update 4927/18 ] WGS84 DATUM

Insert

 <b>FI(2)R.6s SPJ E2</b>	1°18·95'N	104°08·39'E
 <b>FI.R.5s SPJ E3</b>	1°19·26'N	104°08·00'E
 <b>FI.G.2s SPJ W1</b>	1°19·24'N	104°06·48'E
 <b>FI.R.2s SPJ W2</b>	1°19·45'N	104°06·31'E
 <b>FI(2)G.10s SPJ W3</b>	1°19·63'N	104°07·14'E
 <b>FI(2)R.10s SPJ W4</b>	1°19·94'N	104°07·13'E

**4925(P) SINGAPORE STRAIT - Breakwater.**

Source: Maritime and Port Authority of Singapore

1.

<b>Update</b>	<b>Feature</b>	<b>Position</b>
Insert	breakwater, single firm line, joining:	1°18·68'N 103°59·37'E 1°18·63'N 103°59·21'E

**Charts affected - 8177**

**V**  
**EXTRACT OF ADMIRALTY NOTICES TO MARINERS**  
**FOR DUAL-BADGED CHARTS**

**These notices can also be accessed directly from UKHO Website:**

<https://www.admiralty.co.uk/maritime-safety-information/admiralty-notices-to-mariners>

**5063(P) SINGAPORE STRAIT - Breakwater.**

Source: Maritime and Port Authority of Singapore and 33Below

1. A submarine cable has been laid joining the following positions:

1°18·64'N 104°00·15'E  
 1°18·33'N 104°00·39'E  
 1°16·63'N 104°03·22'E  
 1°16·19'N 104°03·23'E  
 1°15·13'N 104°03·81'E  
 1°14·98'N 104°04·37'E  
 1°14·54'N 104°04·52'E  
 1°13·69'N 104°06·06'E  
 1°13·62'N 104°06·76'E  
 1°13·94'N 104°07·96'E  
 1°13·82'N 104°08·41'E  
 1°13·22'N 104°08·69'E  
 1°12·89'N 104°11·16'E  
 1°13·21'N 104°13·37'E  
 1°12·82'N 104°14·18'E  
 1°12·84'N 104°15·03'E  
 1°13·62'N 104°16·97'E  
 1°13·86'N 104°17·42'E  
 1°13·92'N 104°18·34'E  
 1°14·25'N 104°19·50'E  
 (WGS84 DATUM)

**Charts affected - 4041 - 4042 - 4043**

---

Updated to Admiralty Notices to Mariners No. 43 of 2018 dated 25<sup>th</sup> October 2018



## **HYDROGRAPHIC NOTE - Instructions**

1. Mariners are requested to notify the Chief Hydrographer, Maritime and Port Authority of Singapore, when new or suspected dangers to navigation are discovered, changes are observed in aids to navigation or where corrections to nautical publications may be necessary. Reports, which cannot be confirmed or are lacking in certain details should not be withheld.
2. Any ambiguities of time, positioning and depth should be stressed and any firm expectation of being able to check the information provided on a following voyage should be mentioned.
3. Mariners using satellite position fixing systems, eg. GPS, should provide details of equipment and datum used (where applicable). Where bearings (true or magnetic) are taken visually or by radar to fix a position, it should include more than two objects in order to provide a check on its accuracy. A position may also be defined by bearing and distance from a conspicuous object eg. beacon, lighthouse etc.
4. The note should include a tracing or a digital image of the chart used and the details should be clearly marked.
5. Echo sounders frequently register greater depths than the advertised maximum depth for the equipment, eg. a trace appearing at 50 metres may be in fact be 550 metres or even 1050 metres for equipment whose maximum depth is 500 metres. Erroneous depths caused by 2nd transmission error can usually be recognised by the following:
  - (a) the tracing being weaker than normal for the depth registered,
  - (b) the trace appearing to pass through the transmission line,
  - (c) the feathery nature of the trace.
6. Upon receipt of a hydrographic note, a Notice to Mariners may be issued. The sender's vessel or name is quoted as the source unless the same information is also received in foreign Notices to Mariners.
7. Reports of shoals, uncharted dangers and defects in aids to navigation may also be made to the appropriate Singapore Port Operations Control Centre on VHF Channels 10, 12, 14, 68 or 73.

## HYDROGRAPHIC NOTE

To:

Chief Hydrographer  
Maritime and Port Authority of Singapore  
7B Keppel Road #20-00 Tanjong Pagar Complex  
Singapore 089055

Tel : (65) 6325 2027  
Fax : (65) 6226 1076  
Email : [hydrographic@mpa.gov.sg](mailto:hydrographic@mpa.gov.sg)

### **Sender's Contact Details** :

Date : .....

Name of Vessel : .....

Address of Sender : .....

Tel : ..... Fax : .....

Email : .....

### **Nature of Observation** :

General Location : .....

Subject : .....

Position : Lat. .... Long. ....

Charts Used : .....

Date & Time of Observation : .....

Details : .....

.....

.....

Attachment : .....

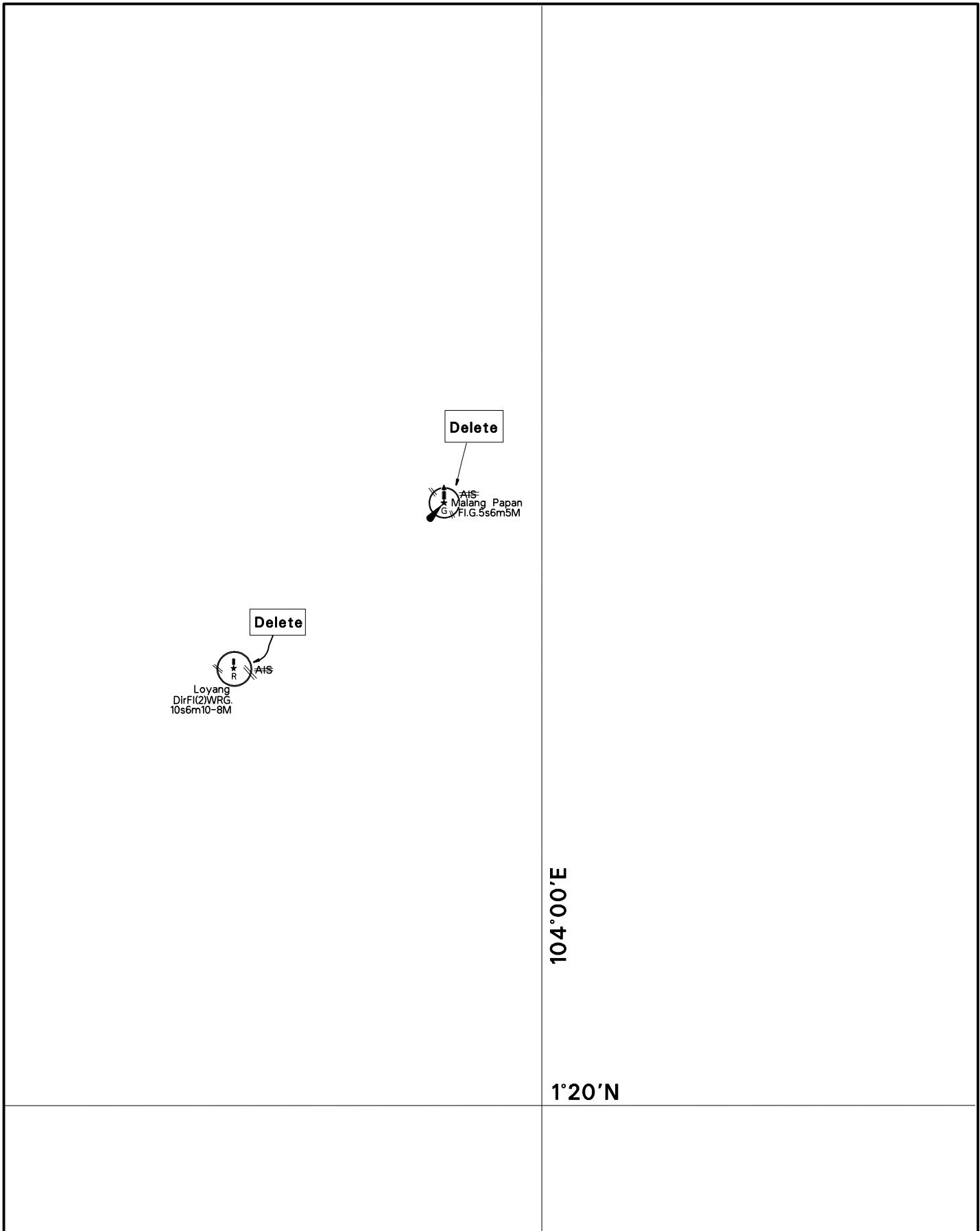
### **Equipment Used** :

Type of Position Fixing : ..... GPS / DGPS ..... Others : .....

Type of Echo Sounder : .....

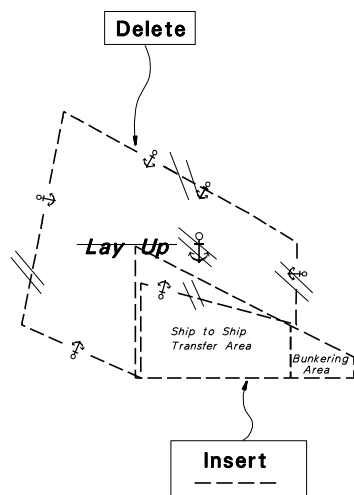
Name and Signature : .....

Ship's/Company's Stamp : .....



CORRECTION NO.	SNM EDN NO.	LAST CORR N O.	CHART NO.	Location on Chart		
						X
87	11/2018	72/2018	GSP1/SP1			

Caution: some computer printers might distort the tracings.  
Users are advised to check and, if necessary, adjust settings on the printer



2°40'N

101°20'E

CORRECTION NO.	SNM EDN NO.	LAST CORRNO NO.	CHART NO.	Location on Chart		
					X	
88	11/2018	43/2018	200			

Caution: some computer printers might distort the tracings.  
Users are advised to check and, if necessary, adjust settings on the printer