



29 September 06

Dear Chart Users

**ANNOUNCEMENT:**  
**SINGAPORE NOTICES TO MARINERS (SNMs) THROUGH ELECTRONIC SERVICES**

Thank you very much for responding to our customer survey that was conducted in May and June 2006. The results of the survey show the welcome of obtaining SNMs through electronic means. This would allow you to access the SNM at your own time and convenience.

2 From the customer survey results, we found out that most users preferred to download the SNM electronically. Hence with effect from 01 January 2007, we will cease to provide hardcopies of the SNM. Please visit our website to download the latest monthly and earlier SNMs edition at <http://www.mpa.gov.sg/infocentre/publications/noticesmari.htm> Latest monthly editions of the SNM will be posted on the web by the 1st of each calendar month.

3 If you require monthly updates of SNM via email or have any enquires regarding SNM, please write to Helena, at [Helena\\_L\\_W\\_LU@mpa.gov.sg](mailto:Helena_L_W_LU@mpa.gov.sg) or Sandra at [Sandra\\_S\\_H\\_WEE@mpa.gov.sg](mailto:Sandra_S_H_WEE@mpa.gov.sg).

Thank you for your support.

Hydrographic Department  
Maritime and Port Authority of Singapore



## SINGAPOREAN NOTICES TO MARINERS

---

	<b>CONTENT</b>	<b>Page</b>
I	Index of Charts & Publications	183
II	New Publications	186
	Notices to Mariners and Chart Corrections	189
	Temporary and Preliminary Notices	191
III	Navigational Information	192
	Amendments to Publications	200
IV	Reprint of Radio Navigational Warnings	202
V	Reprint of Admiralty Notices to Mariners for Dual Badged Charts	203

---

**The monthly Notices to Mariners contain corrective information affecting charts published by the Hydrographic Department, Maritime and Port Authority of Singapore. The information contained in these Notices should be updated on the charts affected. Notices under Section II apply only to the particular Singaporean Chart(s) indicated.**

---

Mariners are requested to notify the Chief Hydrographer, Maritime and Port Authority of Singapore, immediately on the discovery of new dangers or suspected dangers to navigation and of changes or defects in aids to navigation. See Hydrographic Note on back page.

These notices can be accessed from the MPA webpage:

<http://www.mpa.gov.sg/infocentre/publications/noticesmari.htm>

Copies of these notices can also be obtained free from the Hydrographic Department, Maritime and Port Authority of Singapore or from our Chart Agent, Motion Smith telephone number (65) 62205098.

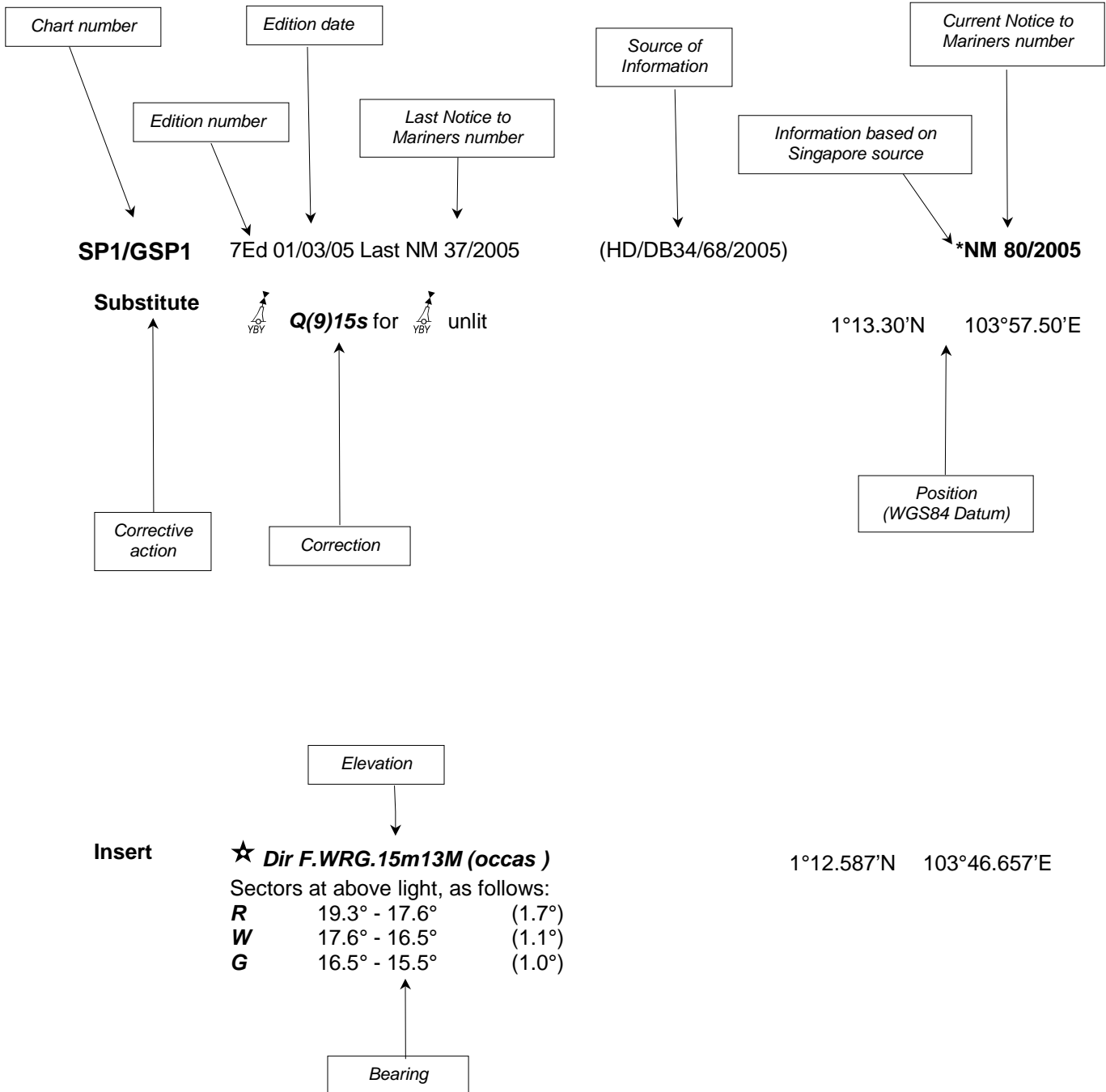
Hydrographic Department  
Maritime and Port Authority of Singapore  
P.O. Box 313  
PSA Building Post Office  
Singapore 911141

Tel : (65) 6375 1550

Fax : (65) 6278 7646

## EXPLANATION OF FORMAT

The elements of a typical chart correction are explained below.



**Notes:**

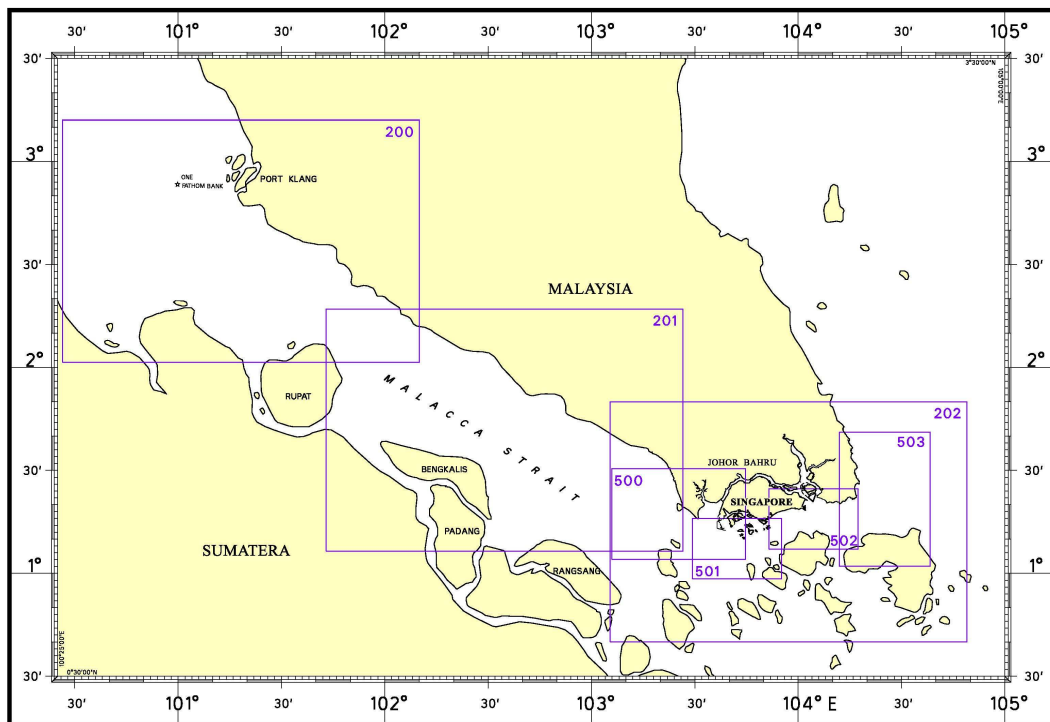
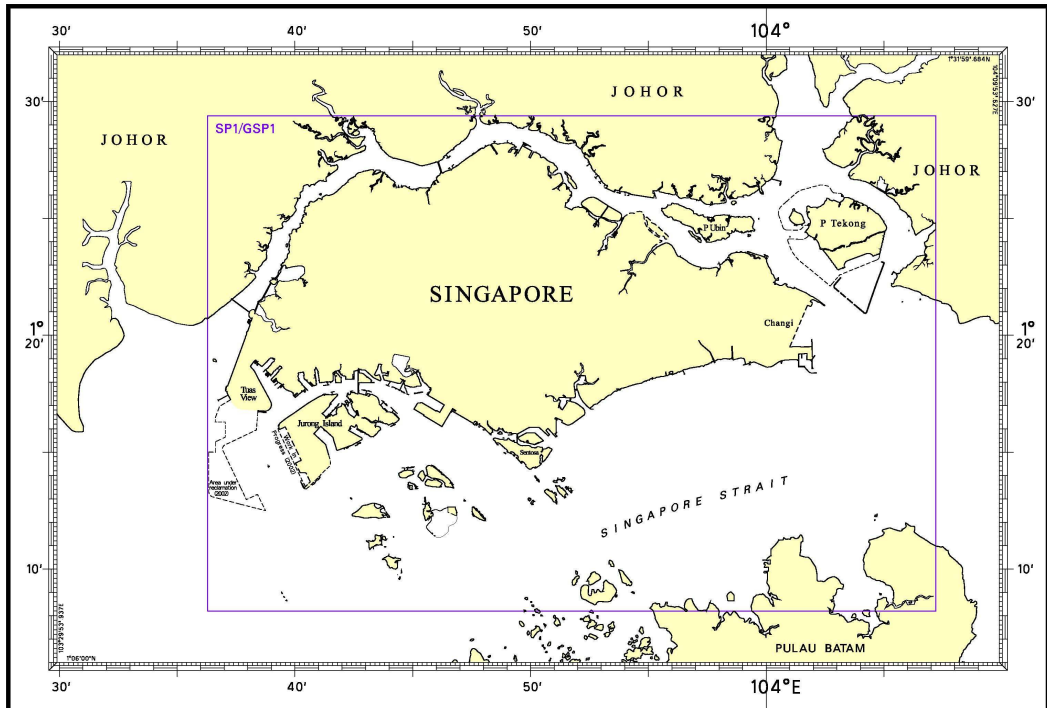
- a) Notice to Mariners number followed by:
  - T** indicates a Temporary Notice (eg. **\*NM 80T/2005**).
  - P** indicates a Preliminary Notice (eg. **\*NM 80P/2005**).
- b) Bearings are referred to True Compass in degrees clockwise from 000° to 359°. Bearings related to lights are from seaward.
- c) Heights and elevations are above Mean High Water Springs.

## I

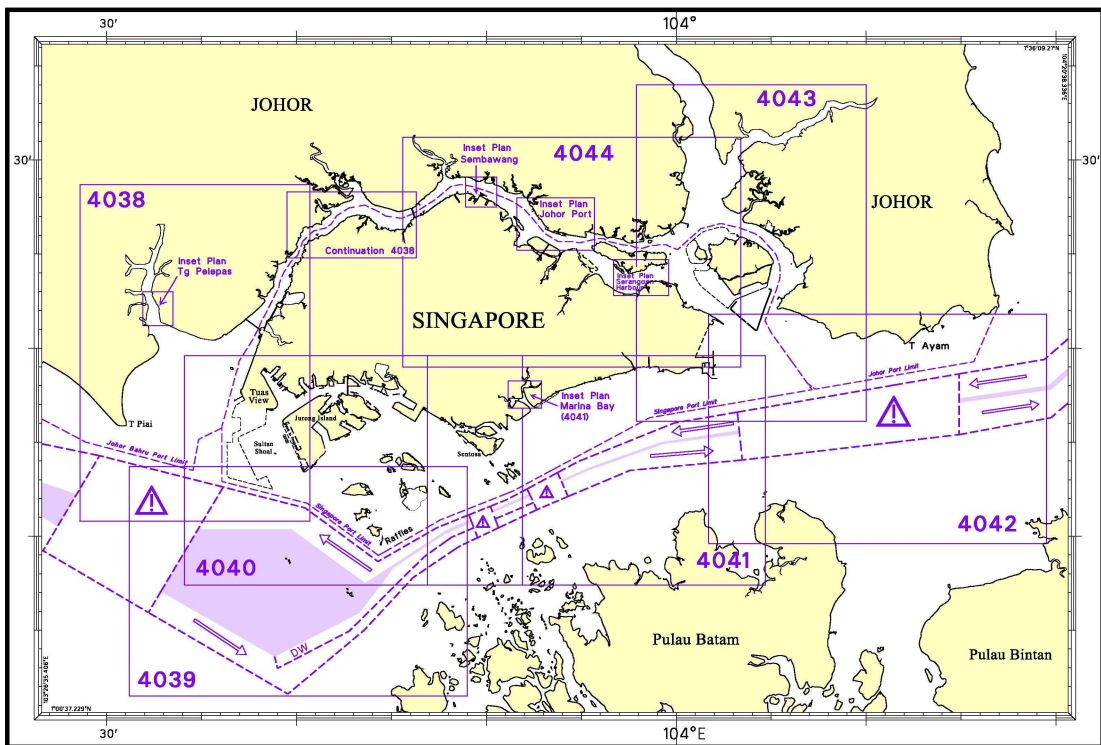
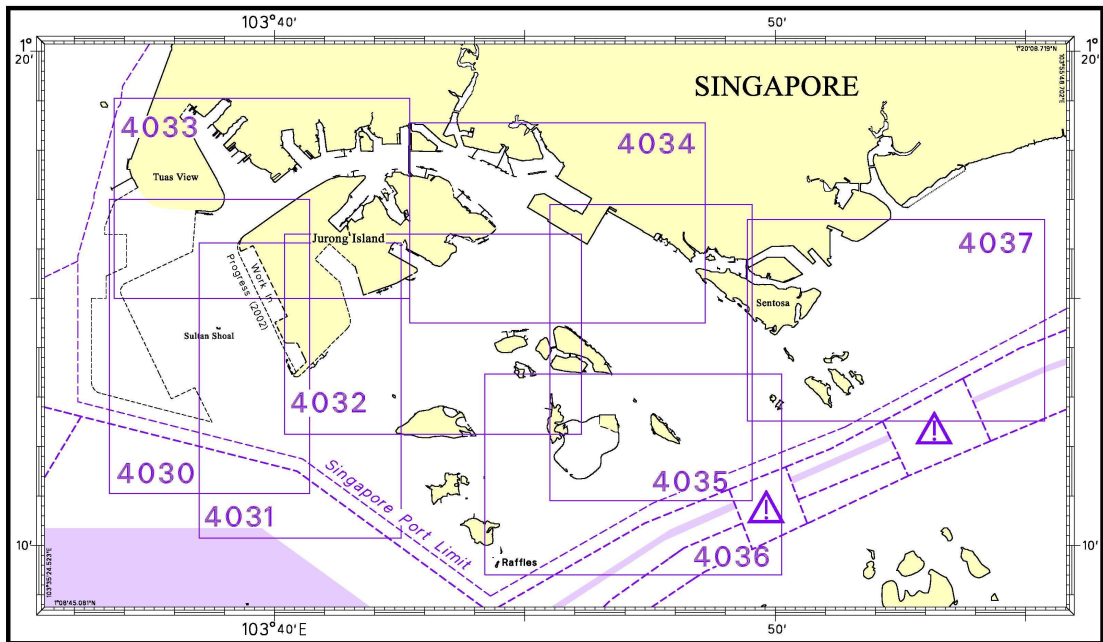
## INDEX OF CHARTS AND PUBLICATIONS

NOTICES	DESCRIPTION	PAGE	NOTICES	DESCRIPTION	PAGE
	INDEX OF SINGAPOREAN CHARTS	184	*134	Construction of Bridge across Selat Chermin	195
	INDEX OF DUAL BADGED CHARTS	185	*135	Reclamation of Tuas View Extension	196
	New Edition SINGAPOREAN CHARTS	186	*136	Construction of Causeway and Bridge	197
	New Edition DUAL BADGED CHARTS	186	*137	Installation of Cofferdams and Dredging works off Pasir Panjang	199
	New Edition SINGAPORE ELECTRONIC NAVIGATIONAL CHARTS	188	*138	Updating of publication "SINGAPORE PORT INFORMATION - 2006/2007 EDITION"	200
*122	SP1/GSP1	189			
*123	SP1/GSP1	189			
*124	SP1/GSP1	189			
*125	SP1/GSP1	189			
*126	SP1/GSP1	189			
*127	201	189			
	202	190			
*128	502	190			
*129T	SP1/GSP1	191			
*130T	SP1/GSP1	191			
*131	Construction of Vopak - Banyan Jetty 3 & 4 at Banyan Basin	192			
*132	Reclamation at Sakra Basin, Jurong Island	193			
*133	Construction of Marine Jetties at Jurong Island (Pulau Seraya)	194			

I  
**INDEX OF CHARTS AND PUBLICATIONS**  
INDEX OF SINGAPOREAN CHARTS



I  
**INDEX OF CHARTS AND PUBLICATIONS**  
INDEX OF DUAL BADGED CHARTS



## II NEW PUBLICATIONS

### NEW EDITION SINGAPOREAN CHART 202 TO BE PUBLISHED ON 19 OCTOBER 2006

**Chart No.** : 202  
**Title** : Singapore Strait  
**Coverage** : Lat 0° 40.00' N 1° 50.00' N  
                   Long 103° 05.34' E 104° 48.89' E  
**Scale** : 1:200 000  
**Date Published** : 19 October 2006  
**Remarks** : This new edition includes new surveys, submarine cables and anchorages.  
                   This new edition supersedes the earlier edition published on 15 November  
                   2004.

---

### NEW EDITION SINGAPOREAN CHART PUBLISHED ON 21 SEPTEMBER 2006

**Chart No.** : 501  
**Title** : Singapore Strait – Western Part  
**Coverage** : Lat 0° 58.36' N 0° 16.00' N  
                   Long 103° 29.17' E 103° 55.05' E  
**Scale** : 1:50 000  
**Date Published** : 21 September 2006  
**Remarks** : This new edition includes new surveys covering Temasek, Sinki, Southern  
                   and East Keppel Fairways and Raffles Shoal. New submarine cables and  
                   Nipa Transit Anchorage are also included. This new edition supersedes the  
                   earlier edition published on 15 September 2003.

---

### NEW EDITION DUAL BADGED CHART PUBLISHED ON 21 SEPTEMBER 2006

**Chart No.** : 4040  
**Title** : Tuas View to Pulau Sakijang Bendera (S John's Island)  
**Coverage** : Lat 1° 07.40' N 1° 19.60' N  
                   Long 103° 34.10' E 103° 51.90' E  
**Scale** : 1:30 000  
**Date Published** : 21 September 2006  
**Remarks** : This new edition includes new surveys covering Temasek, Sinki and East  
                   Keppel Fairways, West Jurong Channel and Raffles Shoal. This new edition  
                   supersedes the earlier edition published on 1 December 2005.

---

## II NEW PUBLICATIONS

### NEW EDITION DUAL BADGED CHARTS PUBLISHED IN AUGUST 2006

**Chart No.** : 4030  
**Title** : Port of Singapore – West Jurong Anchorages and Temasek Fairway  
**Coverage** : Lat 1° 11.05' N 1° 17.00' N  
 Long 103° 36.70' E 103° 40.70' E  
**Scale** : 1:10 000  
**Date Published** : 10 August 2006  
**Remarks** : This new edition includes new surveys covering Temasek Fairway and West Jurong Channel. This new edition supersedes the earlier edition published on 22 January 2004.

**Chart No.** : 4031  
**Title** : Port of Singapore – Western Approaches to Jurong Island  
**Coverage** : Lat 1° 10.15' N 1° 16.12' N  
 Long 103° 38.50' E 103° 42.53' E  
**Scale** : 1:10 000  
**Date Published** : 10 August 2006  
**Remarks** : This new edition includes new surveys covering Raffles Shoal, Selat Pauh, Southern Island Firing Area, Temasek Fairway, VLCC Jetties and Banyan Basin. This new edition supersedes the earlier edition published on 22 January 2004.

**Chart No.** : 4032  
**Title** : Port of Singapore – Sinki Fairway  
**Coverage** : Lat 1° 12.25' N 1° 16.30' N  
 Long 103° 40.20' E 103° 46.13' E  
**Scale** : 1:10 000  
**Date Published** : 10 August 2006  
**Remarks** : This new edition includes new surveys covering Selat Pauh, Southern Island Firing Area, VLCC Jetties, Banyan Basin and Selat Sinki. This new edition supersedes the earlier edition published on 22 January 2004.

**Chart No.** : 4038  
**Title** : Malaysia and Singapore, Johor Strait, Western Part.  
 Plan A, Town Reach (Scale 1:30 000)  
 Plan B, Malaysia, Pelabuhan Tanjung Pelepas (Scale 1:15 000)  
**Coverage** : Lat 1° 10.80' N 1° 28.70' N  
 Long 103° 28.60' E 103° 40.70' E  
**Scale** : 1:30 000  
**Date Published** : 17 August 2006  
**Remarks** : This new edition includes new surveys covering Temasek Fairway, Sinki Fairway and Raffles Shoal. This new edition supersedes the earlier edition published on 17 November 2005.

**Charts are available from** : Motion Smith  
 76 Shenton Way #01-01  
 Singapore 079119  
 Tel : (65) 6220 5098  
 (After office hours, Pager No.9304 4156, 9304 4159).  
 Fax : (65) 6225 4902  
 Email : sales@motsmith.com  
 Internet Website : <http://www.motsmith.com>

**II**  
**NEW PUBLICATIONS**

**NEW EDITION OF THE SINGAPORE ELECTRONIC NAVIGATIONAL CHARTS (ENC) COVERING DUAL BADGED CHARTS 4030, 4031, 4032 WERE RELEASED ON 10 AUG 2006 AND 4038 ON 17 AUG 2006.**





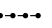
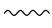
For more information:

Please contact Ms Jenny Goh/Siti at Tel: 6375 1575/6 or visit our website:

<http://www.mpa.gov.sg/portdevelopment/services/enc.htm>

---

**II**  
**NOTICES TO MARINERS AND CHART CORRECTIONS**

<b>SP1/GSP1</b>	8Ed 30/03/06 Last NM 117/2006	(HD/Job No. 153C/2005)	<b>*NM 122/2006</b>
<b>Delete</b>	 Wk		1°13.36'N 103°50.95'E
		(HD/HY Code C00108506)	<b>*NM 123/06</b>
<b>Delete</b>	 Obstn		1°15.99'N 103°47.91'E
	 Wks		1°15.79'N 103°48.16'E
		(HD/HE025/113/2006)	<b>*NM 124/06</b>
<b>Insert</b>	Legend, " <b>Disused</b> " for Busing Beacon and		1°14.20'N 103°44.31'E
<b>Substitute</b>	Legend, " <b>W</b> " for "G" Busing Beacon		
		(HD/HE025/123/2006)	<b>*NM 125/06</b>
<b>Relocate</b>	 <b>Fl.G.2s, Laba</b> (1°21.51'N, 103°38.30'E)		1°21.22'N 103°38.12'E
		(HD/Job No. 79C/2006)	<b>*NM 126/06</b>
<b>Insert</b>	Gas Pipeline,  , joining		1°29.06'N 103°48.10'E 1°28.93'N 103°48.07'E 1°28.21'N 103°47.68'E 1°27.77'N 103°47.44'E 1°27.71'N 103°47.49'E
<hr/>			
<b>201</b>	2Ed 15/09/03 Last NM 98/2006	(HD/HY Code L00900506)	<b>*NM 127/06</b>
<b>Insert</b>	Submarine Cable buried,  , joining:		
	Chart Border		1°09.06'N 103°26.45'E 1°12.28'N 103°21.01'E 1°16.05'N 103°02.95'E 1°38.19'N 102°31.31'E 1°44.82'N 102°15.28'E 1°44.03'N 102°13.32'E 1°44.90'N 102°02.21'E 1°48.39'N 101°54.29'E 1°45.05'N 101°52.16'E 1°42.91'N 101°52.21'E 1°35.92'N 101°54.82'E

**II**  
**NOTICES TO MARINERS AND CHART CORRECTIONS**

	1°35.57'N	101°54.71'E
	1°35.48'N	101°54.29'E
	1°40.61'N	101°47.55'E
	1°41.98'N	101°43.95'E
Chart Border	1°41.97'N	101°42.91'E

---

**202**                      4Ed 15/11/04 Last NM 106/2006                      (HD/HY Code L00900506)                      **\*NM 127/06**

**Insert**

Submarine Cable buried,  , joining:	1°08.55'N	103°55.34'E
	1°09.83'N	103°55.33'E
	1°10.78'N	103°53.17'E
	1°07.28'N	103°46.03'E
	1°06.47'N	103°45.87'E
	1°01.50'N	103°40.00'E
	1°01.44'N	103°38.95'E
	1°12.28'N	103°21.01'E
Chart Border	1°15.36'N	103°05.34'E

---

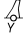

**502**                      3Ed 25/10/05 Last NM 115/2006                      (HD/HY Code A00103506)                      **\*NM 128/06**

**Insert**

Depth <b>16<sub>4</sub></b> and extend 20m contour to enclose	1°12.99'N	103°51.60'E
---	-----------	-------------

---

**II**  
**TEMPORARY AND PRELIMINARY NOTICES**

<b>SP1/GSP1</b>	8Ed 30/03/06 Last NM 117/2006	(HD/HE025/108/2006)	<b>*NM 129T/06</b>
<b>Insert</b>	 <b>Fl.Y.2s, P Busing 'A'</b>		1°14.33'N 103°44.17'E
		(HD/HE025/109/2006)	<b>*NM 130T/06</b>
<b>Insert</b>	 <b>Fl.Y.6s, P Busing 'C'</b>		1°14.13'N 103°44.18'E

---

### III NAVIGATIONAL INFORMATION

#### \* (NM 131/2006) CONSTRUCTION OF VOPAK – BANYAN JETTY 3 & 4 AT BANYAN BASIN

Applicable to : Mariners operating at Banyan Basin, Jurong Island

Date : With effect from 07 August 2006 to 06 February 2007

Location : Banyan Basin, within a working area for jetty construction works bounded by the following co-ordinates (please see plan attached)

#### Working Area

#### WGS 84 Datum

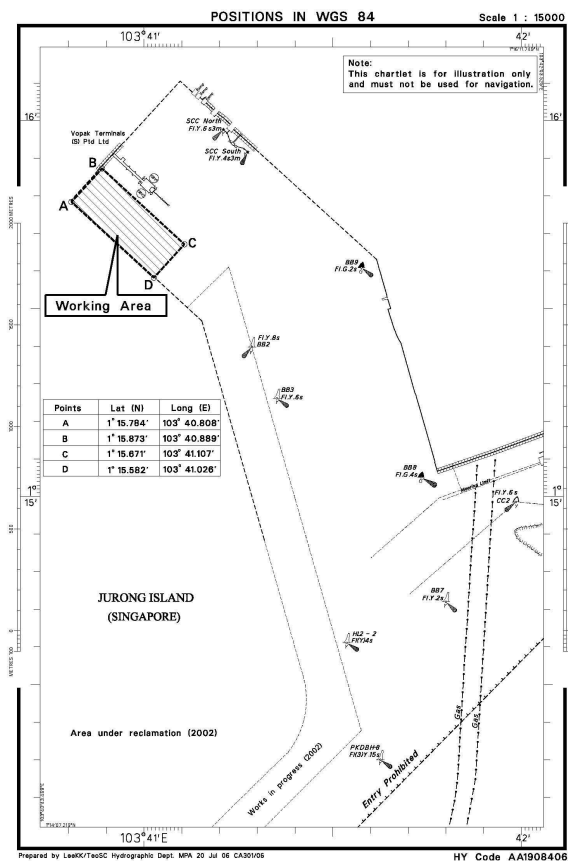
<u>Point</u>	<u>Latitude (N)</u>	<u>Longitude (E)</u>
A	1°15.784'	103°40.808'
B	1°15.873'	103°40.889'
C	1°15.671'	103°41.107'
D	1°15.582'	103°41.026'

Working Hours : 24 hours daily including Sundays and Public Holidays.

Caution : **When in the vicinity of the working area, mariners are reminded to:**

- (a) navigate with caution;
- (b) maintain a proper lookout;
- (c) proceed at safe speed;
- (d) maintain a listening watch on CHF Channel 22/68; and
- (e) for assistance, communicate with Sinki Control on VHF Channel 68.

Source : Port Marine Notice No. 106 of 2006 dated 1 August 2006.



### III NAVIGATIONAL INFORMATION

#### \* (NM 132/2006) RECLAMATION AT SAKRA BASIN, JURONG ISLAND

Applicable to : Mariners operating at the western part of Singapore waters.

Date : With effect from 09 August 2006 to 07 February 2007

Location : Sakra Basin within the working areas bounded by the following coordinates (please see plan attached):

#### Working Area

#### WGS 84 Datum

<u>Point</u>	<u>Latitude (N)</u>	<u>Longitude (E)</u>
1	01°16.009'	103°42.318'
2	01°15.844'	103°42.609'
3	01°15.792'	103°42.677'
4	01°15.659'	103°42.912'
5	01°15.548'	103°42.850'

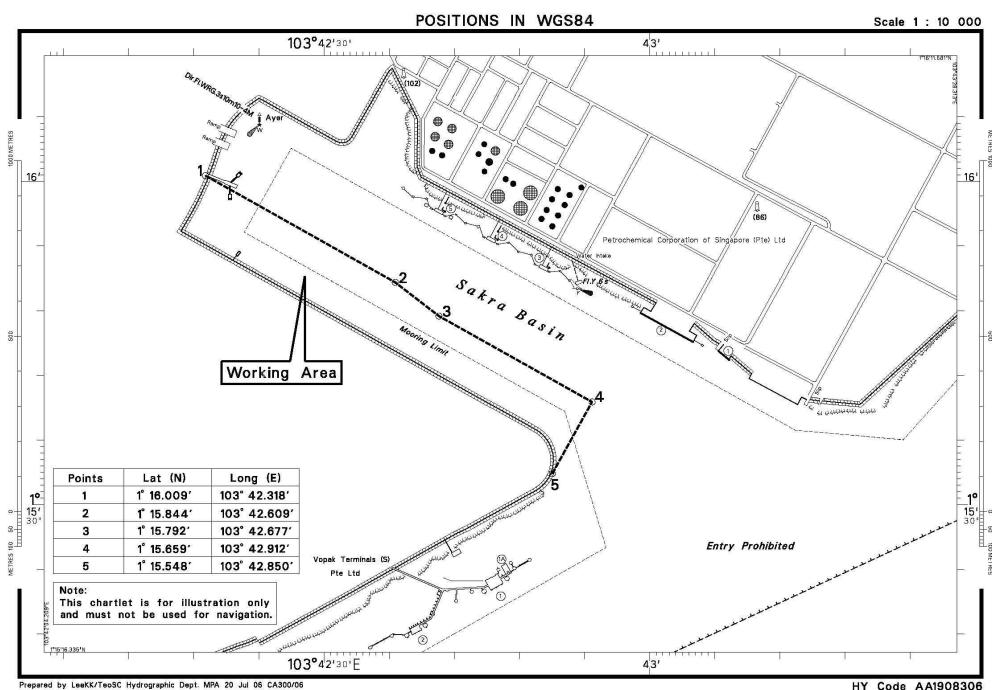
And from Point 5 back to Point 1, along the coastline.

Working Hours : 24 hours daily including Sundays and Public Holidays.

Caution : **When in the vicinity of the working area, mariners are reminded to:**

- (a) keep well clear and not to enter the working area;**
- (b) maintain a proper look-out;**
- (c) proceed at a safe speed & navigate with caution;**
- (d) maintain a listening watch on VHF Channel 22/68; and**
- (e) for assistance, communicate with Sinki Control on VHF Channel 68.**

Source : Port Marine Notice No. 108 of 2006 dated 2 August 2006.



### III NAVIGATIONAL INFORMATION

#### \* (NM 133/2006) CONSTRUCTION OF MARINE JETTIES AT JURONG ISLAND (PULAU SERAYA)

Applicable to : Mariners operating at East Jurong Channel.

Date : With effect from 31 August 2006 to 01 March 2007.

Location : At Jurong Island, Seraya (between SRC and Seraya Power Station Terminals) within a working area bounded by the following co-ordinates (please see plan attached):

#### Working Area

##### WGS 84 Datum

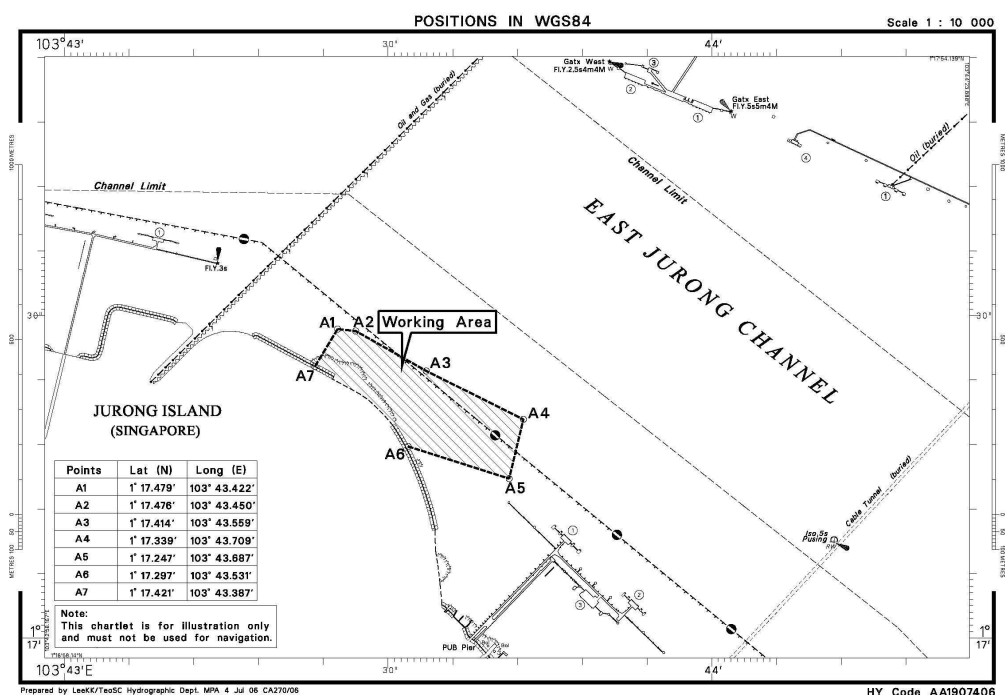
Point	Latitude (N)	Longitude (E)
A1	1°17.479'	103°43.422'
A2	1°17.476'	103°43.450'
A3	1°17.414'	103°43.559'
A4	1°17.339'	103°43.709'
A5	1°17.247'	103° 43.687'
A6	1°17.297'	103°43.531'
A7	1°17.421'	103°43.387'

Working Hours : 24 hours daily including Sundays and Public Holidays.

Caution : **When in the vicinity of the working area, mariners are reminded to:**

- keep well clear and not to enter the working area;
- maintain a proper lookout;
- proceed at a safe speed;
- maintain a listening watch on VHF Channel 22/68; and
- communicate with Jurong Control on VHF Channel 22 for assistance, if required.

Source : Port Marine Notice No. 116 of 2006 dated 24 August 2006.



### III NAVIGATIONAL INFORMATION

**\* (NM 134/2006) CONSTRUCTION OF BRIDGE ACROSS SELAT CHERMIN  
(KEPPEL BAY DRIVE TO PULAU KEPPEL) AND BREAKWATER AT PULAU KEPPEL**

Applicable to : Mariners operating in Cruise Bay

Date : With effect from 29 August 2006 to 26 February 2007

Location : At Selat Chermin, from Keppel Bay Drive to Pulau Keppel within a working area bounded by the following co-ordinates (see plan attached):

Working Area

<u>Point</u>	<u>WGS 84 Datum</u>	
	<u>Latitude (N)</u>	<u>Longitude (E)</u>
1	1°15.777'	103°48.649'
2	1°15.770'	103°48.592'
3	1°15.797'	103°48.588'
4	1°15.813'	103°48.593'
5	1°15.870'	103°48.522'
6	1°15.876'	103°48.545'
7	1°15.831'	103°48.601'
8	1°15.848'	103°48.611'
9	1°15.854'	103°48.647'
10	1°15.884'	103°48.661'
11	1°15.899'	103°48.672'
12	1°15.910'	103°48.690'
13	1°15.914'	103°48.704'
14	1°15.983'	103°48.668'
15	1°15.830'	103°48.945'
16	1°15.812'	103°48.940'
17	1°15.838'	103°48.893'
18	1°15.787'	103°48.804'
19	1°15.908'	103°48.600'
20	1°15.870'	103°48.592'
21	1°15.866'	103°48.611'
22	1°15.900'	103°48.618'

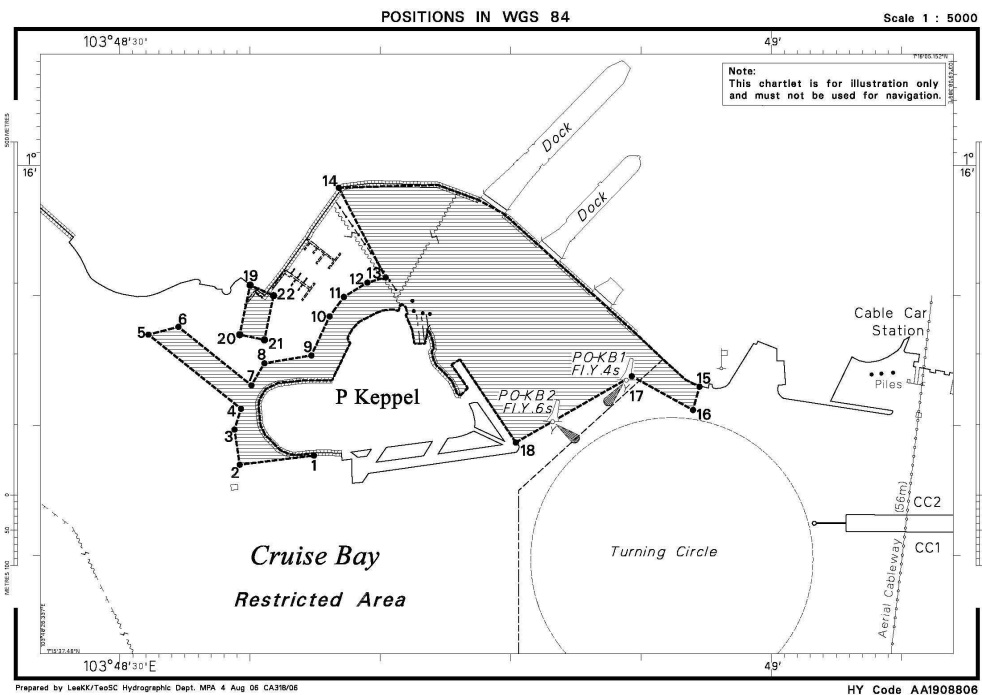
Working Hours : 24 hours daily including Sundays and Public Holidays.

Caution : **When in the vicinity of the working area, mariners are reminded to:**

- (a) keep well clear and not to enter the working area;**
- (b) maintain a proper lookout;**
- (c) proceed at a safe speed;**
- (d) navigate with caution; and**
- (e) communicate with Cruise Bay Control on VHF Channel 05, if assistance is required.**

Source : Port Marine Notice No. 118 of 2006 dated 29 August 2006.  
(Previous Port Marine Notice No. 55 of 2006 dated 13 April 2006 is cancelled.)

### III NAVIGATIONAL INFORMATION



**\* (NM 135/2006) RECLAMATION OF TUAS VIEW EXTENSION: STAGES 1, 2, 3 & 4**

- Applicable to : Mariners operating in the western part of Singapore waters  
This is a repetition of Port Marine Notice No. 31 of 2006. The work period is extended.
- Date : With effect from 06 September 2006 to 05 March 2007.
- Location : Off Tuas View, within a working area bounded by the following co-ordinates (please see plan attached) :

Working Area

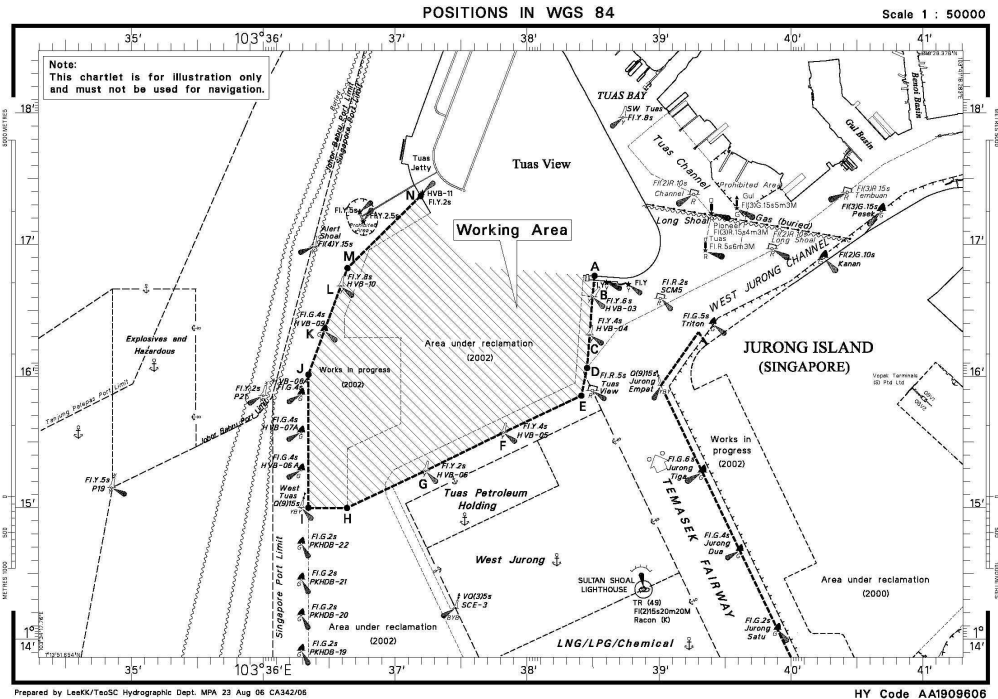
Point	WGS 84 Datum		Marker Buoy/Light Characteristics
	Latitude (N)	Longitude (E)	
A	1°16.762'	103°38.512'	--
B	1°16.603'	103°38.496'	Yellow Pillar/FI Y 6s
C	1°16.313'	103°38.475'	Yellow Pillar/FI Y 4s
D	1°16.062'	103°38.455'	--
E	1°15.851'	103°38.412'	--
F	1°15.570'	103°37.820'	Yellow Pillar/FI Y 4s
G	1°15.280'	103°37.230'	Yellow Pillar/FI Y 2s
H	1°14.997'	103°36.635'	--
I	1°14.997'	103°36.342'	--
J	1°16.011'	103°36.342'	--
K	1°16.345'	103°36.463'	Green Conical/FI G 4s
L	1°16.683'	103°36.588'	Yellow Pillar/FI Y 8s
M	1°16.821'	103°36.638'	--
N	1°17.369'	103°37.194'	Yellow Trestle/FI Y 2s

Working Hours : 24 hours daily including Sundays and Public Holidays.

### III NAVIGATIONAL INFORMATION

Caution : **When in the vicinity of the working area, mariners are reminded to:**  
**(a) keep well clear and not to enter the working area;**  
**(b) maintain a proper look-out;**  
**(c) proceed at a safe speed;**  
**(d) maintain a listening watch on VHF Channel 68; and**  
**(e) for assistance, communicate with Jurong Control on VHF Channel 22.**

Source : Port Marine Notice No. 119 of 2006 dated 29 August 2006.



**\* (NM 136/2006) CONSTRUCTION OF:**  
**(a) CAUSEWAY ACROSS PULAU PUNGGOL BARAT AND PULAU PUNGGOL TIMUR; AND**  
**(b) BRIDGE ACROSS PULAU PUNGGOL BARAT AND MAINLAND (SELETAR)**

Applicable to : Mariners operating at East Jurong Channel.

Date : With effect from 06 September 2006 to 07 March 2007.

Location : At Sungai Seletar, Pulau Punggol Barat and Pulau Punggol Timur within a working area bounded by the following co-ordinates (see plan attached):

Working Area A

WGS 84 Datum

Point	Latitude (N)	Longitude (E)
1	01° 25.427'	103° 51.957'
2	01° 25.463'	103° 51.935'
3	01° 25.616'	103° 52.145'
4	01° 25.584'	103° 52.173'

### III NAVIGATIONAL INFORMATION

#### Working Area B

#### WGS 84 Datum

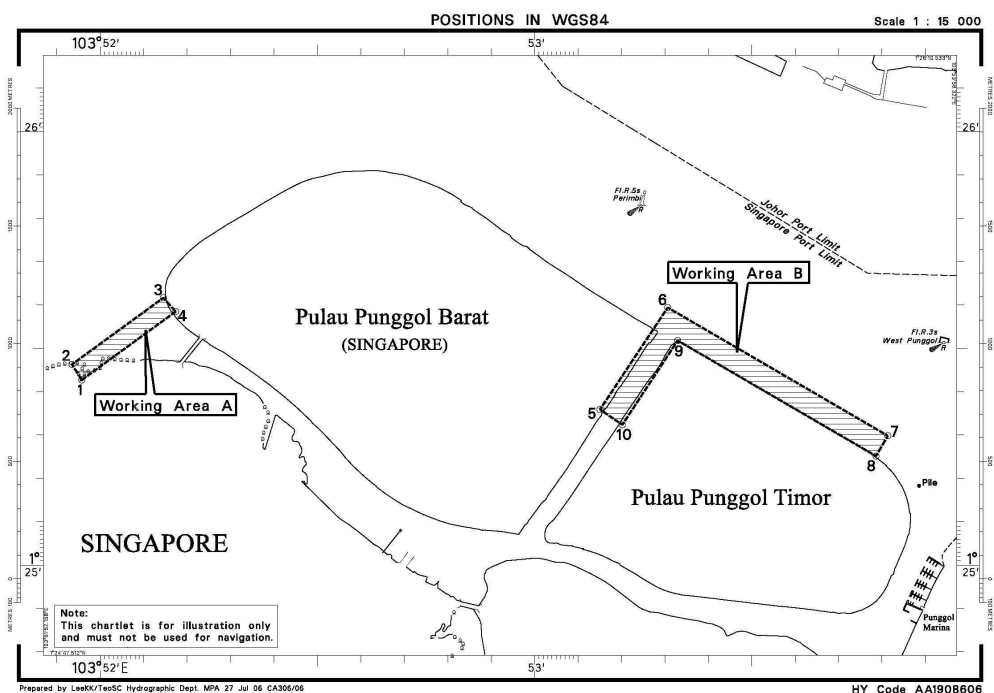
<u>Point</u>	<u>Latitude (N)</u>	<u>Longitude (E)</u>
5	1° 25.359'	103° 53.151'
6	1° 25.594'	103° 53.307'
7	1° 25.298'	103° 53.813'
8	1° 25.251'	103° 53.786'
9	1° 25.518'	103° 53.330'
10	1° 25.324'	103° 53.202'

Working Hours : 24 hours daily including Sundays and Public Holidays.

Caution : **When in the vicinity of the working area, mariners are reminded to:**

- (a) keep well clear and not to enter the working area;
- (b) maintain a proper lookout;
- (c) proceed at a safe speed;
- (d) navigate with caution; and
- (e) communicate with Sembawang Control on VHF Channel 21, if assistance is required.

Source : Port Marine Notice No. 120 of 2006 dated 30 August 2006.



### III NAVIGATIONAL INFORMATION

#### \* (NM 137/2006) INSTALLATION OF COFFERDAMS AND DREDGING WORKS OFF PASIR PANJANG

Applicable to : Mariners operating in the West Keppel Fairway

Date : With effect from 15 September 2006 to 28 February 2007.

Location : Marine construction and dredging works will be carried out off the coast of Pasir Panjang, next to Labrador Park within the working area bounded by the following co-ordinates (please see plan attached):

#### Working Area

#### WGS 84 Datum

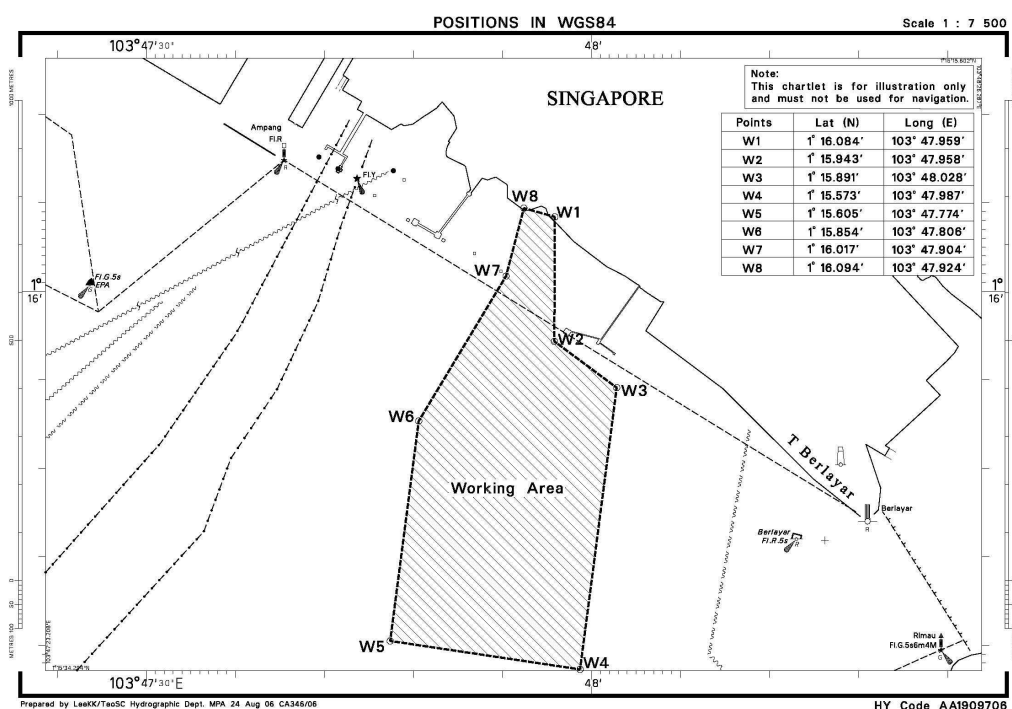
<u>Point</u>	<u>Latitude (N)</u>	<u>Longitude (E)</u>
W1	1°16.084'	103°47.959'
W2	1°15.943'	103°47.958'
W3	1°15.891'	103°47.028'
W4	1°15.573'	103°47.987'
W5	1°15.605'	103°47.774'
W6	1°15.854'	103°47.806'
W7	1°16.017'	103°47.904'
W8	1°16.094'	103°47.924'

Working Hours : 24 hours daily Including Sundays and Public Holidays.

Caution : **When in the vicinity of the working area, mariners are reminded to:**

- (a) keep well clear and not to enter the safety working zone of the barges and dredgers;
- (b) maintain a proper lookout;
- (c) proceed at a safe speed; and
- (d) communicate with West Control on VHF 68 for assistance, if required

Source : Port Marine Notice No. 123 of 2006 dated 8 September 2006.



**III**  
**AMENDMENTS TO PUBLICATIONS**

**\*(NM 138/2006) UPDATING OF PUBLICATION "SINGAPORE PORT INFORMATION 2006/2007 EDITION"**

1 Page 113

**WEST JOHOR STRAIT**

Amend the following:

Name of Beacon / Buoy	Position	
	Lat. N Long. E Deg Min	Position Lat. N Long. E Deg Min
Laba Buoy	Delete 01 21.508	<b><i>Insert</i></b> <b><i>01 21.221</i></b>
	103 38.303	<b><i>103 38.116</i></b>

Source: HD/HE025/123/2006

2 Page 122

**SINKI FAIRWAY (Cont/)**

Amend the following:

Name of Beacon / Buoy	Position		Structure Colour & Shape
	Lat. N Long. E Deg Min		
Busing Beacon	01 14.200	Delete Green cone on green masonry cone frustum	<b><i>Insert</i></b> <b><i>White cone on white masonry cone frustum</i></b>
	103 44.305		
			Light Characteristic
		Delete Unlit	<b><i>Insert</i></b> <b><i>Disused</i></b>

Source: HD/HE025/113/2006

**III**  
**AMENDMENTS TO PUBLICATIONS**

3 Page 147 - Item 7

**PASIR PANJANG TERMINAL (PSA Corporation Ltd) (1°17.2'N, 103°46.1'E)**

Amend the following:

Berth	Depth Alongside (Year Surveyed)	
	Delete	<i>Insert</i>
P04	14.8m (2006)	<b>15.0m (2006)</b>
P07	14.3m (2006)	<b>15.0m (2006)</b>

Source: HD/HY Codes C00107806 &amp; C00107906

4 Page 153 - Item 19

**JURONG ISLAND (PETROCHEMICAL CORPORATION OF SINGAPORE)  
(1°15.9'N, 103°43.0'E)**

Amend the following:

Berth	Depth Alongside (Year Surveyed)	
	Delete	<i>Insert</i>
1 (Unloading)	2.7m (2000)	<b>1.8m (2006)</b>
2 (Solids)	8.4m (2000)	<b>6.8m (2006)</b>
3 (Liquid)	8.1m (2000)	<b>7.7m (2006)</b>
4 (Liquid)	10.8m (2000)	<b>10.8m (2006)</b>
5 (Liquid)	11.4m (2006)	<b>10.8m (2006)</b>

Insert the following:

Berth	Length of Berth	Depth Alongside (Year Surveyed)
<b>Barge Wharf</b>	<b>117m</b>	<b>3.0m (2006)</b>

Source: HD/HY Code E00109706

**IV**  
**REPRINT OF RADIO NAVIGATIONAL WARNINGS**

Nil

**V**  
**REPRINT OF ADMIRALTY NOTICES TO MARINERS**  
**FOR DUAL BADGED CHARTS**

Nil

**MPA ELECTRONIC NAVIGATIONAL CHARTS (ENC) DISTRIBUTORS**

Please approach any of the appointed distributors to purchase the Singapore ENC.

<b>PERSON TO CONTACT</b>	<b>ADDRESS</b>	<b>TELEPHONE/FAX NO./EMAIL/WEBSITE</b>
Mr Chong Chee Meng General Manager	DPM (Singapore) Pte Ltd 1 Maritime Square, #09-72 Harbour Front Centre, Singapore 099253	Tel. No.: +65 6270 4060 Fax No.: +65 6276 3858 Email: <a href="mailto:sales@dpmsingapore.com.sg">sales@dpmsingapore.com.sg</a> Website: <a href="http://www.dpmsingapore.com.sg">http://www.dpmsingapore.com.sg</a>
Ms Shirley Koh	Kelvin Hughes (S) Pte Ltd 8 Pandan Avenue #02-00, Singapore 609384	Tel. No.: +65 6545 9880 ext.12 Fax No.: +65 6545 8892 Email: <a href="mailto:shirley.koh@khsing.com">shirley.koh@khsing.com</a> Website: <a href="http://www.kelvinhughes.co.uk">http://www.kelvinhughes.co.uk</a>
Mr Philip Loh Sales Manager	Motion Smith 76 Shenton Way #01-01, Singapore 079119	Tel. No.: +65 6220 5098 Fax No.: +65 6225 4902 Email: <a href="mailto:sales@motsmith.com">sales@motsmith.com</a> Website: <a href="http://www.motsmith.com">http://www.motsmith.com</a>
Mr Choy Kum Weng Director	Vector Services Pte Ltd 2 Maritime Square #04-12B SPI Building, Singapore 099255	Tel. No.: +65 6278 7212 Fax No.: +65 6278 7212 Email: <a href="mailto:kwchoy@pacific.net.sg">kwchoy@pacific.net.sg</a>
Mr Looi Keen Wai Regional Sales Manager	Transas Marine Pacific Pte Ltd 750C Chai Chee Road, Technopark@Chai Chee, #04-07 Singapore 469003	Tel. No.: +65 6443 3061 Fax No.: +65 6443 3025 Email: <a href="mailto:looi@transas.com.sg">looi@transas.com.sg</a> Website: <a href="http://www.transas.com.sg">www.transas.com.sg</a>
Mr George Arts President	Marine Press of Canada 640 Rue St-Paul Ouest, Suite 300 Montreal (QC) Canada, H3C1L9	Tel. No.: (514) 866-8342 Fax No.: (514) 866-9050 Email: <a href="mailto:sales@marinepress.com">sales@marinepress.com</a> Website: <a href="http://www.marinepress.com">www.marinepress.com</a>
Mr Thomas Wilde Superintendent	HanseNautic GmbH Bade & Hornig, Eckardt & Messtorff Herrengaben 31 D-20459 Hamburg, Germany	Tel. No.: +49 40 374 811-32 Fax No.: +49 40 366 400 Email: <a href="mailto:info@HanseNautic.com">info@HanseNautic.com</a> Website: <a href="http://www.HanseNautic.com">http://www.HanseNautic.com</a>
Ms Verena Borsos Manager	SevenCs AG + Co. KG Ruhrstrasse 90, D-22761 Hamburg, Germany	Tel. No.: +49 40 853 58 6940 Fax No.: +49 40 853 58 6949 Email: <a href="mailto:sales@chartworld.com">sales@chartworld.com</a> Website: <a href="http://www.sevencs.com">http://www.sevencs.com</a>
Mr K. Shimiz ENC Manager	Japan Hydrographic Association ENC Service Division 5-3-3 Tsukiji, Chuo-ku Tokyo 104-0045, Japan	Tel. No.: +81 3 3543 0752 Fax No.: +81 3 3543 0695 Email: <a href="mailto:enc-support@jha.jp">enc-support@jha.jp</a> Website: <a href="http://www.jha.jp.com">http://www.jha.jp.com</a>
Mr Jester-Kim Foreign Business Department Manager	E_MLX Co. Ltd Ssangyong Research No.2 Lab Sinseong-Dong 100 Yusong-Gu, Daejoen 305-804, Korea (ROK)	Tel. No.: +82 42 865 1893 Fax No.: +82 42 865 1884 Email: <a href="mailto:Jester-kim@emlx.co.kr">Jester-kim@emlx.co.kr</a>
Mr C G Kim	Korean Ocean Development Co. Ltd 2ND Fl, Dongbang Bldg, 25-4, 4 Ga Jungang-Dong, Jung-Gu, Busan, South Korea	Tel. No.: +82 514 66 0760 Fax No.: +82 514 65 9345 Email: <a href="mailto:sales@chartkorea.com">sales@chartkorea.com</a> Website: <a href="http://chartkorea.com">http://chartkorea.com</a>
Mr Kjell Nodland	C-Map Norway A/S P.O Box 212, N-4371 Egersund, Norway	Tel No.: +47 514 64 700 Fax No: +47 514 64 701 Email: <a href="mailto:market@c-map.no">market@c-map.no</a> Website: <a href="http://www.c-map.no">http://www.c-map.no</a>

Ms Marianne Barstad	PRIMAR STAVANGER Lervigsveien 36, P.O Box 60, N-4001 Stavanger, Norway	Tel. No.: +47 51 93 9500 Fax No.: +47 51 93 9501 Email: <a href="mailto:sales@primar.org">sales@primar.org</a> Website: <a href="http://www.primar-stavanger.org">http://www.primar-stavanger.org</a>
Mr Roar Moe International Marketing Coordinator	Maritime Information System AS (MARIS) Danholmen 25, No.3115 Tonsberg, Norway	Tel. No.: +47 33 30 42 50 Fax No.: +47 33 30 42 51 Email: <a href="mailto:roar.moe@maris.no">roar.moe@maris.no</a> Website: <a href="http://www.maris.no">http://www.maris.no</a>
Mr Andy Criddle Regional Sales Manager	United Kingdom Hydrographic Office Admiralty Way, Taunton, Somerset TA1 2DN United Kingdom	Tel. No.: +44 (0)1823 337900 Fax No.: +44 (0)1823 284077 Email: <a href="mailto:vargroup@ukho.gov.uk">vargroup@ukho.gov.uk</a> & <a href="mailto:andrew.criddle@ukho.gov.uk">andrew.criddle@ukho.gov.uk</a> Website: <a href="http://www.ukho.gov.uk">www.ukho.gov.uk</a>

---

**CHART AGENT FOR MARITIME AND PORT AUTHORITY OF SINGAPORE (MPA) PUBLICATIONS**

**Agent's name** : Motion Smith  
**Address** : 76 Shenton Way # 01-01  
Singapore 079119  
**Telephone** : (65) 6220 5098  
: (After Office hours: Pager No. 9304 4156, 9304 4159)  
**Fax No.** : (65) 6225 4902  
**E-mail** : [sales@motsmith.com](mailto:sales@motsmith.com)  
**Website** : <http://www.motsmith.com>

---

## HYDROGRAPHIC NOTE - Instructions

1. Mariners are requested to notify the Chief Hydrographer, Maritime and Port Authority of Singapore, when new or suspected dangers to navigation are discovered, changes are observed in aids to navigation or where corrections to nautical publications may be necessary. Reports which cannot be confirmed or are lacking in certain details should not be withheld.
2. Any ambiguities of time, positioning and depth should be stressed and any firm expectation of being able to check the information provided on a following voyage should be mentioned.
3. Mariners using satellite position fixing systems, eg. GPS, should provide details of equipment and datum used (where applicable). Where bearings (true or magnetic) are taken visually or by radar to fix a position, it should include more than two objects in order to provide a check on its accuracy. A position may also be defined by bearing and distance from a conspicuous object eg. beacon, lighthouse etc.
4. The note should include a tracing or a digital image of the chart used and the details should be clearly marked.
5. Echo sounders frequently register greater depths than the advertised maximum depth for the equipment, eg. a trace appearing at 50 metres may be in fact be 550 metres or even 1050 metres for equipment whose maximum depth is 500 metres. Erroneous depths caused by 2nd transmission error can usually be recognised by the following:
  - (a) the tracing being weaker than normal for the depth registered,
  - (b) the trace appearing to pass through the transmission line,
  - (c) the feathery nature of the trace.
6. An acknowledgement of receipt will be sent. When a Notice to Mariners is issued, the sender's vessel or name is quoted as the source unless the same information is also received in foreign Notices to Mariners.
7. Reports of shoals, uncharted dangers and defects in aids to navigation may also be made to the appropriate Singapore Port Operations Control Station on VHF Channels 10, 12, 14, 68 or 73.

**HYDROGRAPHIC NOTE**

To:

Chief Hydrographer  
Hydrographic Department  
Maritime and Port Authority of Singapore  
460 Alexandra Road #20-00 PSA Building  
Singapore 119963

Tel : (65) 6375 1550 or (65) 6375 1551  
Fax : (65) 6278 7646  
Email : [hydrographic@mpa.gov.sg](mailto:hydrographic@mpa.gov.sg)

**Sender's Contact Details** :

Date : .....  
Name of Vessel : .....  
Address of Sender : .....  
Tel : ..... Fax : .....  
Email : .....

**Nature of Observation** :

General Location : .....  
Subject : .....  
Position : Lat. .... Long. ....  
Charts Used : .....  
Date & Time of Observation : .....  
Details : .....  
.....  
.....  
Attachment : .....

**Equipment Used** :

Type of Position Fixing : GPS / DGPS Others : .....  
Type of Echo Sounder : .....

Name and Signature : .....

Ship's / Company's tamp : .....