



SINGAPOREAN NOTICES TO MARINERS

SECTION	CONTENT	Page
I	Index of Charts & Publications	185
II	New Publications	190
	Notices to Mariners and Chart Corrections	193
	Temporary and Preliminary Notices	194
III	Navigational Information	196
	Amendments to Publications	198
IV	Reprint of Radio Navigational Warnings	199
V	Reprint of Admiralty Notices to Mariners for Dual Badged Charts	200

The monthly Notices to Mariners contain corrective information affecting charts published by the Hydrographic Department, Maritime and Port Authority of Singapore. The information contained in these Notices should be updated on the charts affected. Notices under Section II apply only to the particular Singaporean Chart(s) indicated.

Mariners are requested to notify the Chief Hydrographer, Maritime and Port Authority of Singapore, immediately on the discovery of new dangers or suspected dangers to navigation and of changes or defects in aids to navigation. See Hydrographic Note on back page.

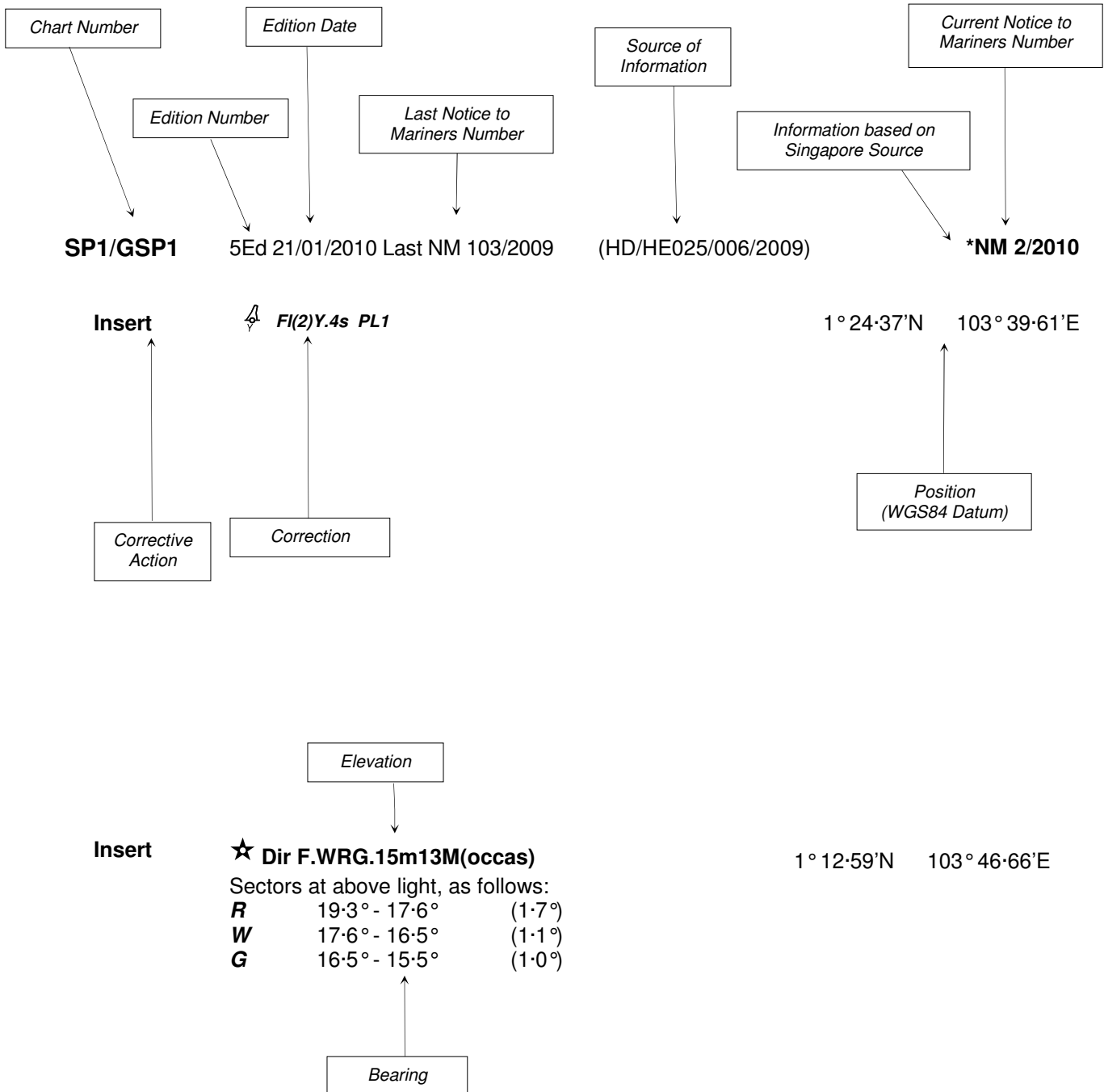
The monthly Singaporean Notices to Mariners can be accessed directly from the MPA website:
[http://www.mpa.gov.sg/sites/port_and_shipping/circulars_and_notices/singapore_notices_to_mariners\(ntm\).page](http://www.mpa.gov.sg/sites/port_and_shipping/circulars_and_notices/singapore_notices_to_mariners(ntm).page)

This service is offered free of charge.

Hydrographic Department
 Maritime and Port Authority of Singapore
 460 Alexandra Road
 PSA Building #20-00
 Singapore 119963
 Tel: (65) 6375 1227
 Fax: (65) 6278 7646

EXPLANATION OF FORMAT

The elements of a typical chart correction are explained below.



Notes:

- a) Notice to Mariners number followed by:
T indicates a Temporary Notice (eg. ***NM 1T/2010**).
P indicates a Preliminary Notice (eg. ***NM 3P/2010**).
- b) Bearings are true reckoned clockwise from 000° to 359° ; those relating to lights are from seaward.
- c) Heights and elevations are above Mean High Water Springs.

I
INDEX OF CHARTS AND PUBLICATIONS

INDEX OF AFFECTED CHARTS

DESCRIPTION	NOTICE NO.	PAGE NO.
Index of Singaporean Charts	-	187
Index of Dual Badged Charts	-	188
Index of Singapore Electronic Navigational Chart (ENC)	-	189
New Publication "SINGAPORE TIDE TABLES YEAR 2011"	-	190
New Edition Dual Badged Charts	-	191
New Edition Singaporean Charts and New Editions of Singapore Electronic Navigational Charts (ENC)	-	192
Singaporean Chart SP1/GSP1	*87, *88	193
Singaporean Chart 200	89	193
Singaporean Chart 502	*90	193
Temporary and Preliminary Notices	*91T	194, 195
Port Marine Notices	*92	196
Singaporean Print-On-Demand (POD) Charts	*93	196
54 th UNB-OMG / UNH-CCOM Multibeam Sonar Training Course Singapore	*94	197
Amendments to Publications	*95	198
Reprint of Radio Navigational Warnings	-	199
Reprint of Admiralty Notices to Mariners for Dual Badged Charts	-	200 to 204
Singapore Electronic Navigational Chart (ENC) Distributors	-	205
Agents for the Maritime and Port Authority of Singapore Nautical Charts and Publications	-	206

*Denotes information are based on Singaporean source.

I
INDEX OF CHARTS AND PUBLICATIONS

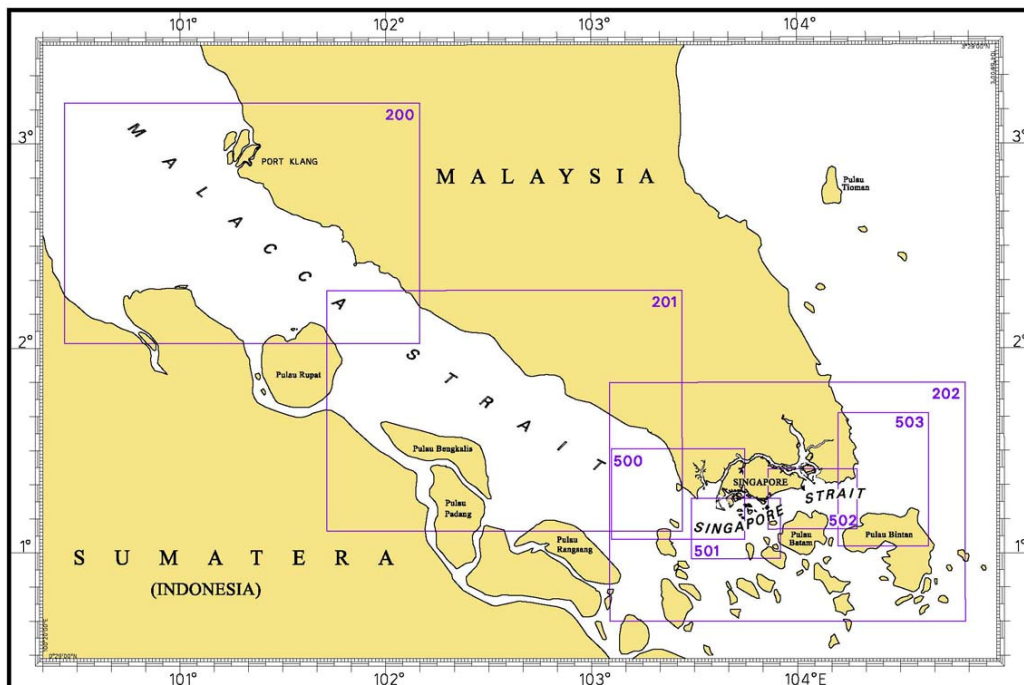
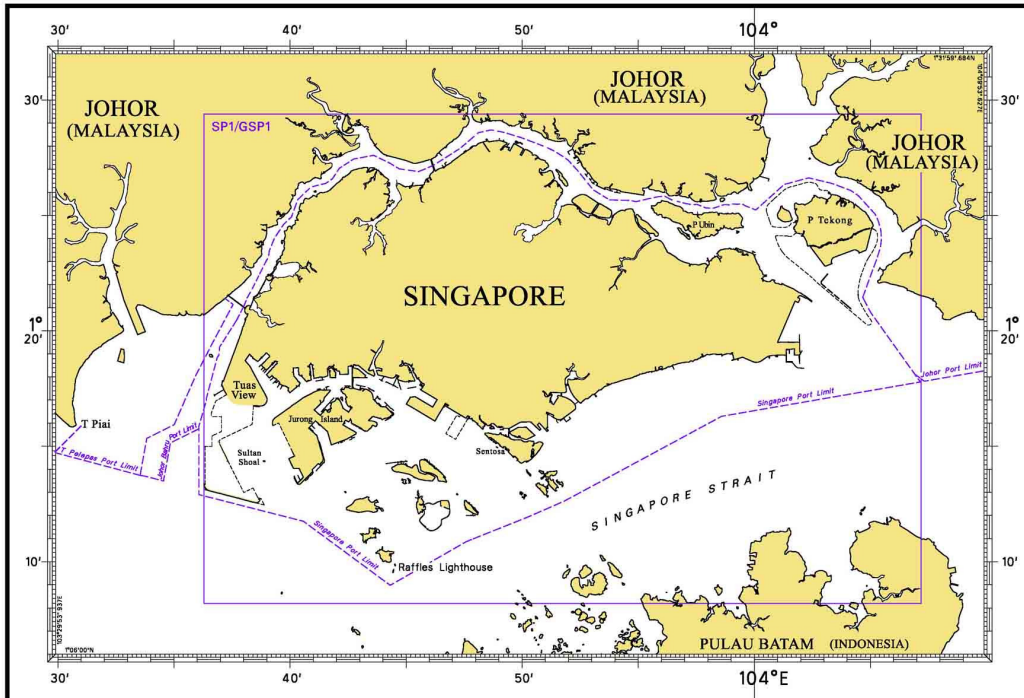
INDEX OF NOTICES

NOTICE NO.	DESCRIPTION	PAGE NO.
-	Index of Singaporean Charts	187
-	Index of Dual Badged Charts	188
-	Index of Singapore Electronic Navigational Chart (ENC)	189
-	New Publication "SINGAPORE TIDE TABLES YEAR 2011"	190
-	New Edition Dual Badged Charts	191
-	New Edition Singaporean Charts and New Editions of Singapore Electronic Navigational Charts (ENC)	192
*87, *88	Singaporean Chart SP1/GSP1	193
89	Singaporean Chart 200	193
*90	Singaporean Chart 502	193
*91T	Temporary and Preliminary Notices	194, 195
*92	Port Marine Notices	196
*93	Singaporean Print-On-Demand (POD) Charts	196
*94	54 th UNB-OMG / UNH-CCOM Multibeam Sonar Training Course Singapore	197
*95	Amendments to Publications	198
-	Reprint of Radio Navigational Warnings	199
-	Reprint of Admiralty Notices to Mariners for Dual Badged Charts	200 to 204
-	Singapore Electronic Navigational (ENC) Distributors	205
-	Agents for the Maritime and Port Authority of Singapore Charts and Publications	206

* Denotes information are based on Singaporean source.

I INDEX OF CHARTS AND PUBLICATIONS

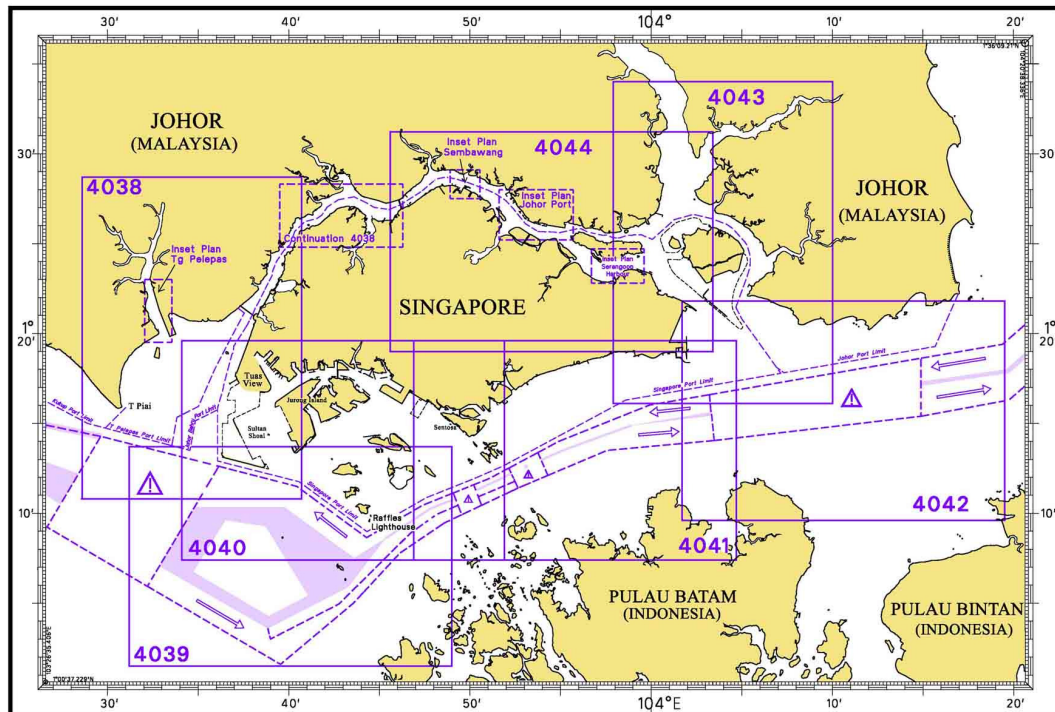
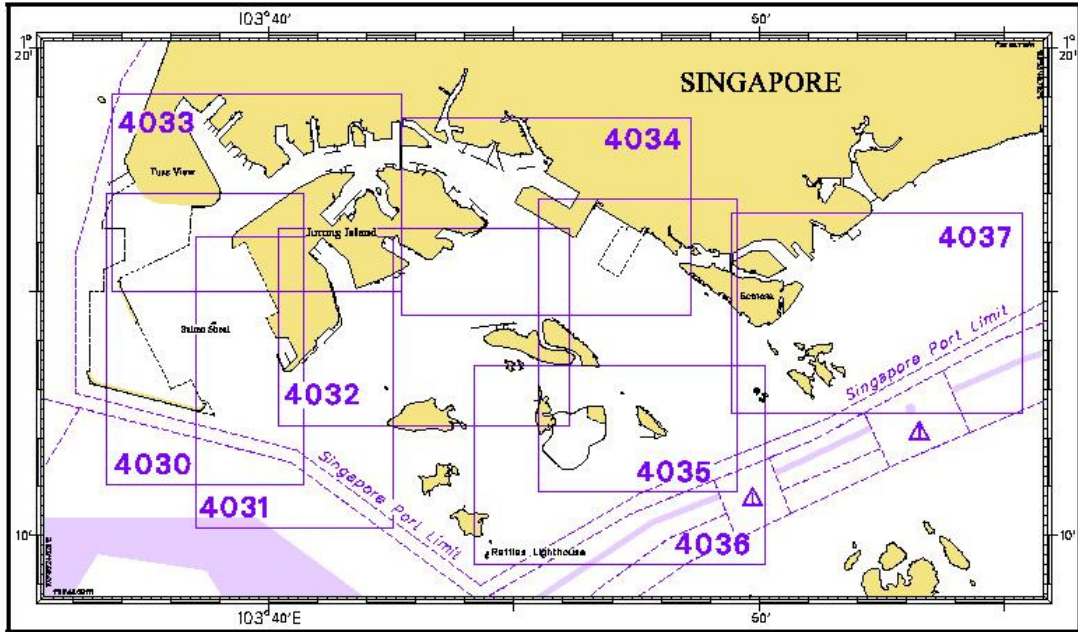
INDEX OF SINGAPOREAN CHARTS



Notes:
 Updated SINGAPOREAN Charts are available through our Print-On-Demand (POD) Chart Service. For more information, refer to Section III – Navigational Information and these charts can be purchased from our authorised Chart Agents:
 DPM (Singapore) Pte Ltd, E.W. Liner Charts & Publications Pte Ltd and Motion Smith.

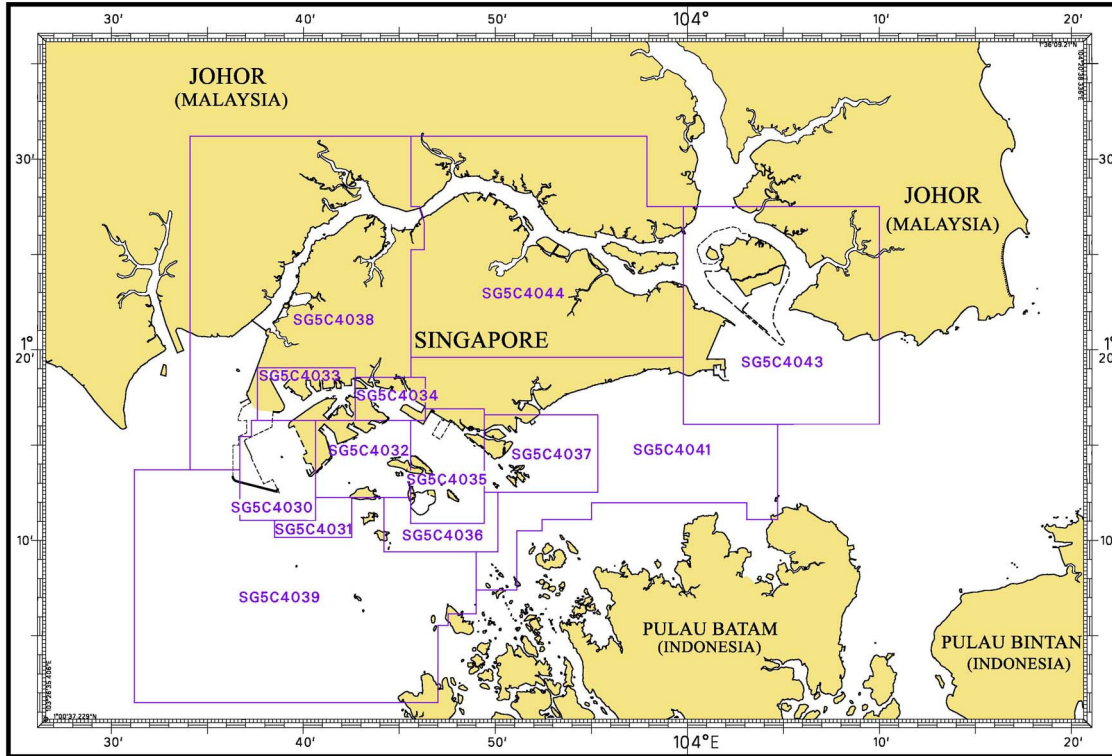
I INDEX OF CHARTS AND PUBLICATIONS

INDEX OF DUAL BADGED CHARTS



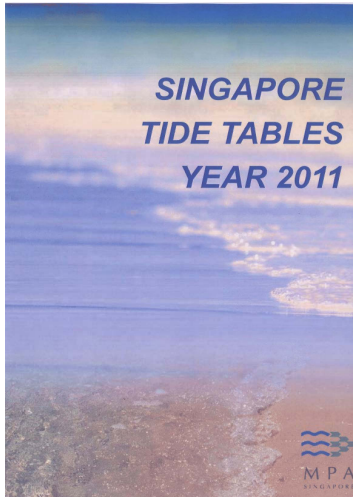
I
INDEX OF CHARTS AND PUBLICATIONS
INDEX OF SINGAPORE ELECTRONIC NAVIGATIONAL CHART (ENC)

INDEX OF SINGAPORE ENC



ENC Name	ENC Title	Latitude	Longitude
SG5C4030	West Jurong Anchorages and Temasek Fairway	1°11'050"N 1°16'300"N	103°36'700"E 103°40'640"E
SG5C4031	Western Approaches to Jurong Island	1°10'150"N 1°12'250"N	103°38'500"E 103°42'530"E
SG5C4032	Sinki Fairway	1°12'250"N 1°16'300"N	103°40'640"E 103°45'580"E
SG5C4033	Tuas Bay, West Jurong Channel and Pesek Basin	1°16'300"N 1°19'050"N	103°37'600"E 103°42'700"E
SG5C4034	East Jurong Channel, Pasir Panjang Terminal and West Keppel Fairway	1°16'300"N 1°18'550"N	103°42'700"E 103°46'356"E
SG5C4035	Western Anchorages, Jong Fairway and Cruise Bay	1°10'900"N 1°16'900"N	103°45'580"E 103°49'425"E
SG5C4036	Raffles Lighthouse to The Sisters	1°09'400"N 1°12'520"N	103°44'200"E 103°50'130"E
SG5C4037	Keppel Harbour, Tanjong Pagar Terminal and Approaches	1°12'520"N 1°16'590"N	103°49'425"E 103°55'340"E
SG5C4038	Johor Strait – Western Part	1°13'700"N 1°31'200"N	103°34'100"E 103°46'300"E
SG5C4039	Western Approaches to Main Strait	1°01'500"N 1°13'700"N	103°31'200"E 103°49'000"E
SG5C4041	Pulau Sebarok to Changi	1°07'400"N 1°19'600"N	103°45'600"E 104°04'700"E
SG5C4043	Kuala Johor and Sungai Johor	1°16'100"N 1°27'500"N	103°59'800"E 104°10'000"E
SG5C4044	Johor Strait – Eastern Part	1°19'600"N 1°31'200"N	103°45'600"E 103°59'800"E

II NEW PUBLICATIONS



SINGAPORE TIDE TABLES YEAR 2011

Summary of Publication

- (a) This 239-page book contains Tidal Height and Tidal Stream Predictions covering stations in Singapore Port waters and selected stations along the Malacca and Singapore Straits.

The predictions consist of 5 main segments to facilitate easy reference:

- High and Low Water Predictions
 - Hourly Tidal Height Predictions
 - Hourly Tidal Stream Predictions
 - Maximum and Slack Tidal Stream Predictions
 - Malacca Strait – High and Low Water Predictions
- (b) The presentation of the predictions is enhanced with colour codes so as to differentiate the various states of tidal heights, eg falling or rising tide and tidal stream directions. Moon phases, eg full and new moon, are also included in each calendar month to complement the prediction values.
- (c) The tidal heights are given in metres above Chart Datum (CD). The CD is the datum of soundings shown on the Singaporean Charts and Dual Badged Charts covering the area. A table showing the various tidal levels eg. Mean High Water Springs, Mean Low Water Springs etc, at various stations with reference to CD is also included in this publication.

To Whom Will It Be Useful?

Mariners, shipping community, port users and other interested users.

Frequency of Publication

Annually.

Cost of Publication

To be advised by Chart Agents.

Order Enquires:

This publication is available from the following Chart Agents:

- 1) DPM (Singapore) Pte Ltd
- 2) E.W. Liner Charts & Publications Pte Ltd
- 3) Motion Smith

(Please refer to Page 206 for details.)

II NEW PUBLICATIONS

NEW EDITION DUAL BADGED CHARTS PUBLISHED ON 30TH SEPTEMBER 2010

Chart Number	:	4034
Title	:	Port of Singapore – East Jurong Channel, Pasir Panjang Terminal and West Keppel Fairway
Coverage	:	Lat 01°14.50'N 01°18.55'N Long 103°42.70'E 103°48.60'E
Scale	:	1: 10 000
Date Published	:	30 th September 2010
Size of Chart	:	1094.3 X 746.3 mm
Remarks	:	This new edition includes updated surveys covering these areas : <ul style="list-style-type: none"> • Pasir Panjang Basin • Off Pasir Panjang Ferry Terminal • Tanjong Penjuru – Vopak Terminal Jetty • Jurong Island (Pulau Seraya) – Oiltanking Singapore Ltd • Portion of Sungei Pandan

The existing chart of the same number published on 8th April 2010 is superseded.

Chart Number	:	4035
Title	:	Port of Singapore – Western Anchorage, Jong Fairway and Cruise Bay
Coverage	:	Lat 01°10.90'N 01°16.90'N Long 103°45.50'E 103°49.54'E
Scale	:	1: 10 000
Date Published	:	30 th September 2010
Size of Chart	:	749.4 X 1105.7 mm
Remarks	:	This new edition includes updated surveys covering these areas : <ul style="list-style-type: none"> • Off Pasir Panjang Ferry Terminal • West of Pulau Sebarok • Shell SBM Area • South of Semakau Dumping Ground • West of Brani Causeway

The existing chart of the same number published on 8th April 2010 is superseded.

II NEW PUBLICATIONS

NEW EDITION SINGAPOREAN CHART TO BE PUBLISHED ON 7TH OCTOBER 2010

Chart Number	:	500
Title	:	Malacca and Singapore Straits Pulau Pisang To Raffles Lighthouse
Coverage	:	Lat 1° 04.05' N 01° 30.50' N Long 103° 05.80' E 103° 44.61' E
Scale	:	1 : 75 000
Date Published	:	7 th October 2010
Size of chart	:	959.8 x 649.9 mm
Remarks	:	This new edition includes updated coastlines of Jurong Island, new submarine cables and as laid positions of the Natuna pipelines with the 500m corridor bathymetry.

The existing chart of the same number published on 30th August 2007 is superseded.

Chart Number	:	201
Title	:	Malacca Strait – Tanjung Keling To Western Entrance Of Singapore Strait
Coverage	:	Lat 1° 06.43' N 02° 16.99' N Long 101° 42.91' E 103° 26.45' E
Scale	:	1 : 200 000
Date Published	:	7 th October 2010
Size of chart	:	960.0 x 650.0 mm
Remarks	:	This new edition includes new submarine cables and updated bathymetry.

The existing chart of the same number published on 5th October 2007 is superseded.





NEW EDITIONS OF THE SINGAPORE ELECTRONIC NAVIGATIONAL CHARTS (ENC) (RELEASE 2010) WERE RELEASED ON 30TH SEPTEMBER 2010.

For more information:

Please contact Ms Jenny Goh/Siti at Tel: 6375 1575/6 or visit our website:

[http://www.mpa.gov.sg/sites/port_and_shipping/port/charts_tidal_information_and_hydrography/charts/Singapore_electronic_navigational_chart\(enc\).page](http://www.mpa.gov.sg/sites/port_and_shipping/port/charts_tidal_information_and_hydrography/charts/Singapore_electronic_navigational_chart(enc).page)

II
NOTICES TO MARINERS AND CHART CORRECTIONS

SP1/GSP1	5Ed 21/01/10 Last NM 77/2010	(HD/HE025/83/2010)	* NM 87/2010
Move	 FI.R.2s SCM5 from:		1°16-59'N 103°39-01'E
	to:		1°16-53'N 103°39-02'E
Insert	dashed line working limit joining	(Port Marine Notice No. 103/2010)	* NM 88/2010
	to		1°16-97'N 103°42-15'E
	Works in Progress (2010) centred on		1°17-06'N 103°42-36'E
			1°16-89'N 103°42-31'E
<hr/>			
200	2Ed 30/11/05 Last NM 79/2010	(Peninsular Malaysia Marine Dept. Notice No. 70/2010)	NM 89/2010
Insert	 FI.G.5s4m8M Kuala Langat		2°48-07'N 101°24-10'E
Delete	 FI.G.4s9m5M		2°48-07'N 101°24-18'E
Insert	 FI.5s8m8M Bambek		2°32-60'N 101°40-70'E
<hr/>			
502	4Ed 29/09/08 Last NM 59/2010	(HD/HY/A00103210)	* NM 90/2010
Substitute	depth 12₂ for 12₇		1°16-43'N 103°54-72'E
<hr/>			

II TEMPORARY AND PRELIMINARY NOTICES

*(NM 91T/2010) DREDGING IN THE WEST BOUND LANE OF THE TRAFFIC SEPARATION SCHEME IN THE SINGAPORE STRAIT

Purpose

Dredging operations will be carried out in the westbound lane of the Traffic Separation Scheme.

Date

1st October 2010 until 1st December 2012 (26 months).

Duration

24 hours operations daily with effect 1st October 2010.

Working Area

West bound lane of the Traffic Separation Scheme, within an area bounded by the following co-ordinates (please see chart attached):

WGS 84 Datum		
Points	Lat. (N)	Long. (E)
1	1°14.897'	103°58.121'
2	1°16.217'	104°01.630'
3	1°16.097'	104°01.674'
4	1°14.684'	103°58.200'

Vessels

Vessels involved in the operations will display the appropriate day / night signals and will maintain listening watch on VHF Ch 12 and VHF Ch 14.

Navigational Broadcast

Navigational warning broadcast will be promulgated by (VTIS) on VHF CH 09 and NAVTEX to inform vessels of the dredging operation. Mariners are to maintain a listening watch for the above safety information.

Caution

Mariners are advised to:

- (a) Navigate with caution and proceed at safe speed when approaching the area; and
- (b) Keep well clear of the working vessels.

Charts affected: SP1/GSP1, 202, 502 & 4041

Source: PENTA-OCEAN/KOON/HYUNDAI/VAN OORD JOINT VENTURE
HD/DB67/12/2010

III NAVIGATIONAL INFORMATION

*(NM 92/2010) PORT MARINE NOTICES

The following PMNs have been shortlisted, as they would be of particular interest to mariners.

These notices can be accessed directly from MPA website:

http://www.mpa.gov.sg/sites/port_and_shipping/circulars_and_notices/port_marine_notices.page

PMN No.	Subject
102/2010	Underwater Drilling and Blasting works at Pasir Panjang Fairway.
103/2010	Reclamation at Ayer Chawan Basin, Jurong Island.
106/2010	Construction of Lighter Wharf and ancillary facilities at Marina South.
107/2010	Construction of International Cruise Terminal.
109/2010	Dredging works off Pasir Panjang Terminal.
110/2010	Construction works at Sembawang Shipyard.
113/2010	Dredging works at East Keppel Fairway.
114/2010	Construction works at Loyang Offshore Base.
115/2010	Construction of sea wall at Marina Wharf.
120/2010	Construction works and shore restoration at Pulau Tekong.

*(NM 93/2010) SINGAPOREAN PRINT-ON-DEMAND (POD) CHARTS

Print-On-Demand (POD) Charts are the most up-to-date paper nautical charts printed for navigational use. These nautical charts are produced in accordance with the International Hydrographic Organisation (IHO) charting specifications. These official nautical charts are continually updated to the latest Notices to Mariners before they are printed and sold to users.

These POD Charts include SP1/GSP1, 200, 201, 202, 500, 501, 502 and 503.

BENEFITS TO OUR CUSTOMERS

Convenience

Customers need not make numerous hand corrections to the nautical charts before use. In addition the updated POD Charts are more accurate and reliable than offset printed charts with hand corrections.

Clarity

Clarity in the presentation of updated information as compared to lithographic printed charts, where in some cases there are several overlapping corrections over existing information.

Coverage

The POD Charts cover the Malacca and Singapore Straits, from One Fathom Bank to Horsburgh Lighthouse.

III
NAVIGATIONAL INFORMATION

*(NM 94/2010) **54th UNIVERSITY OF NEW BRUNSWICK – Ocean Mapping Group /
UNIVERSITY OF NEW HAMPSHIRE – Center for Coastal and Ocean Mapping
Multibeam Sonar Training Course Singapore**

The Course

This six-day, 36-lecture course is designed to provide a theoretical and practical background in marine swath survey technology and techniques for hydrographic surveys, continental shelf boundary delimitation, offshore engineering, harbour dredging, fisheries habitat, route survey and scientific research, and provides overviews of:

- the technology and problems associated with shallow water multibeam surveys,
- processing and visualization techniques designed to address the complexities of swath mapping,
- constraints on using swath bathymetry to produce highest quality data.

When

22nd – 27th Nov 2010

Where

Grand Ballroom 1, Furama City Centre Hotel,
60 Eu Tong Sen Street, Singapore 059804
<http://www.furama.com/citycentre/>

For more information:

Please contact Mr Lee Weng Choy at email wlee@mpa.gov.sg

Tel: +65 6375 1220

Fax: +65 6278 7646 or

Mr Muhammad Nor Azmi Bin Aman at email Md_Nor_Azmi_Bin_Aman@mpa.gov.sg

Tel: +65 6375 1543

Fax: +65 6278 7646

or visit our website:

http://www.mpa.gov.sg/sites/images/pdf_capture/mbc54info_v7_fields_distributed.pdf

III AMENDMENTS TO PUBLICATIONS

***(NM 95/2010) UPDATING OF PUBLICATION "SINGAPORE PORT INFORMATION 2010/2011"**

1. Page 114

**CHARACTERISTICS OF AIDS TO NAVIGATION
WEST JURONG CHANNEL**

Name of Beacon/Buoy	Position	
	Lat. N	Long. E
	Delete	Insert
SCM5 Buoy	01 16.589 103 39.013	01 16.529 103 39.015

Source: HD/HE025/83/2010

2. Page 148 – Item 16

JURONG ISLAND (EXXONMOBIL ASIA PACIFIC PTE LTD) (1°16.8'N, 103°41.5'E)

Insert the following :

Berth	Length of Berth		Depth Alongside (Year Surveyed)	
	Delete	Insert	Delete	Insert
Barge Wharf (Uploading)	100m	252m	5.0m(2009)	5.9m(2010)

Source: HD/HY/E00100810

3. Page 153 – Item 32

**WHARVES AND BERTHS
TANJONG PENJURU - SHELL TANKER JETTY (SHELL REFINERY) (1°17.4'N, 103°44.7'E)**

Berth	Depth Alongside (Year Surveyed)	
	Delete	Insert
Jetty	10.4m (2007)	10.3m (2010)

Source: HD/HY/H00101210

IV
REPRINT OF RADIO NAVIGATIONAL WARNINGS

TT173

VESSELS IN EAST JOHOR STRAIT ARE ADVISED TO NAVIGATE WITH CAUTION WHEN NEAR THE PROJECT AREAS OFF PULAU TEKONG, CHANGI AND MALANG PAPAN AS SHALLOW WATER AREAS EXIST. VESSELS ARE ADVISED TO KEEP LOOKOUT FOR TUGS AND BARGES NAVIGATING NEAR THE PROJECT AREAS AND PASSENGER FERRIES CROSSING BETWEEN CHANGI AND PULAU TEKONG AND VICINITY OF PASIR GUDANG.

TT619

DREDGER QUEEN OF PENTA OCEAN IS CONDUCTING DREDGING OPERATIONS IN POSITIONS BOUNDED BY COORDINATES:

01°15.827' N 103°57.737' E

01°14.865' N 103°58.134' E

01°13.298' N 103°54.401' E

01°13.884' N 103°54.131' E

VESSELS ARE ADVISED TO PROCEED AT SAFE SPEED AND TO GIVE A WIDE BERTH.

TT753

A SMALL WOODEN CARGO BOAT 10M IN LENGTH SUNK AT 01°15.73'N 103°32.1'E.

TT884

SALVAGE OPS UNDERWAY IN 01°13.4'N 103°57.75'E. ALL SHIPS ARE REQUESTED TO GIVE A WIDE BERTH OF AT LEAST 5 CABLES WHEN PASSING THE AREA.

TT886

SAFE WATER MARK LFL.10S(RW) MARKED THE ENTRANCE INTO DWR IS MISSING.

TT899

CABLE SHIP 'ASEAN RESTORER' IS CARRYING OUT CABLE REPAIRS OPERATIONS AT 01°08.6166'N 103°27.6122'E AND THE WORKING AREA IS AT THE EDGE OF TSS OF EAST BOUND LANE AND OFF PULAU KARIMUM. VESSELS ARE ADVISED TO KEEP A LOOKOUT AND GIVE WIDE BERTH.

SR154

THERE WAS A REPORT OF AN UNIDENTIFIED VESSEL SUNK SOUTHWEST OF HORSBURGH AT POSITION 01°16.12'N 104°21.5'E. VESSELS IN THE VICINITY ARE ADVISED TO KEEP A LOOKOUT AND REPORT SIGHTING TO SPOCC.

ISSUED BY SINGAPORE PORT OPERATIONS CONTROL CENTRE (as at 26th September 2010)

V
**REPRINT OF ADMIRALTY NOTICES TO MARINERS
 FOR DUAL BADGED CHARTS**

These notices can be accessed directly from UKHO Website:

<http://www.ukho.gov.uk/ProductsandServices/MaritimeSafety/Pages/NMPublic.aspx>

4182* SINGAPORE – Singapore Strait – Pulau Batam – Cautionary notes.

Source: UKHO

Chart 4039 [*previous update 3314/10*] WGS84 DATUM

Insert the accompanying block, showing amendments to cautionary notes, centred on: 1° 02'·77N., 103° 47'·57E.

Chart 4041 [*previous update 3774/10*] WGS84 DATUM

Insert the accompanying block, showing amendments to cautionary notes, centred on: 1° 18'·93N., 103° 52'·18E.

Chart 4042 [*previous update 3314/10*] WGS84 DATUM

Insert the accompanying block, showing amendments to cautionary notes, centred on: 1° 10'· 50N., 104° 06'·38E.

4183* SINGAPORE – Tuas View and East Jurong Channel – Fuel Oil Unloading Jetty and Pasir Panjang Terminal – Jetty. Dredged area. Depths. Rock.

Source: Maritime and Port Authority of Singapore

Chart 4030 [*previous update 3774/10*] WGS84 DATUM

Insert the accompanying block, showing a new jetty, dredged area and amendments to depths, centred on: 1° 16'· 620N., 103° 38'·745E.

Chart 4033 [*previous update 3774/10*] WGS84 DATUM

Insert the accompanying block, showing a new jetty, dredged area and amendments to depths, centred on: 1° 16'· 620N., 103° 38'·745E.

Chart 4034 [*previous update 3774/10*] WGS84 DATUM

Substitute  (14₅) for  (14₇) 1° 17'· 481N., 103° 45'·581E.

4521* SINGAPORE – Jong Fairway – Pulau Bukom Eastwards – Light-beacon.

Light List Vol. F, 2009/10, 1690.1

Source: UKHO

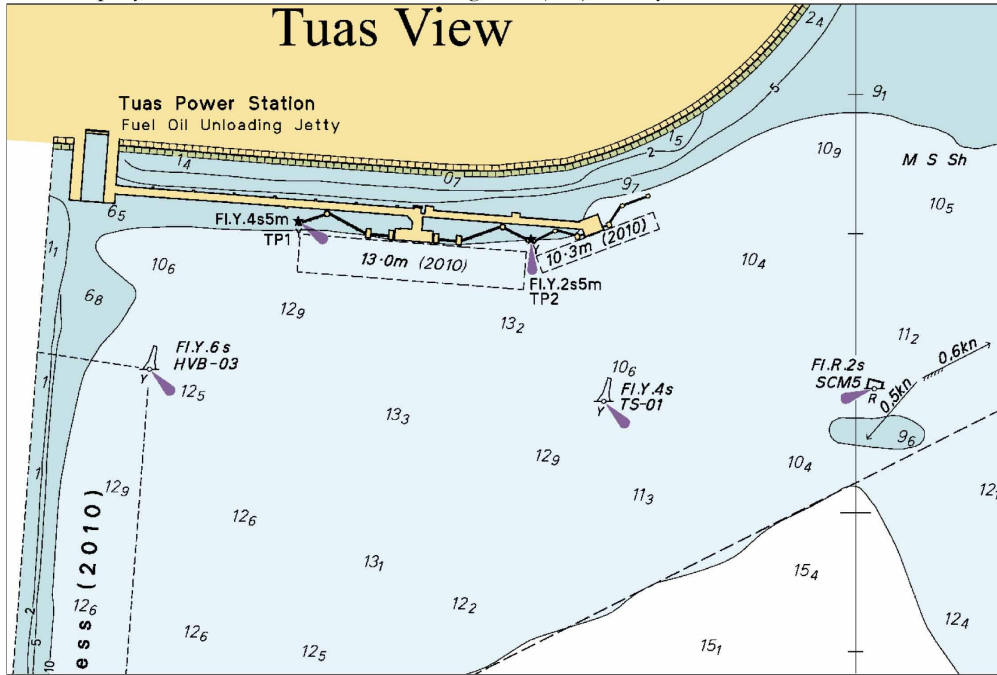
Chart 4035 [*previous update 3774/10*] WGS84 DATUM

Move  **Q(6)+LFl.15s4m5M Second Bukom**, from: 1° 14'· 161N., 103° 46'·455E.
 to: 1° 14'· 172N., 103° 46'·452E.

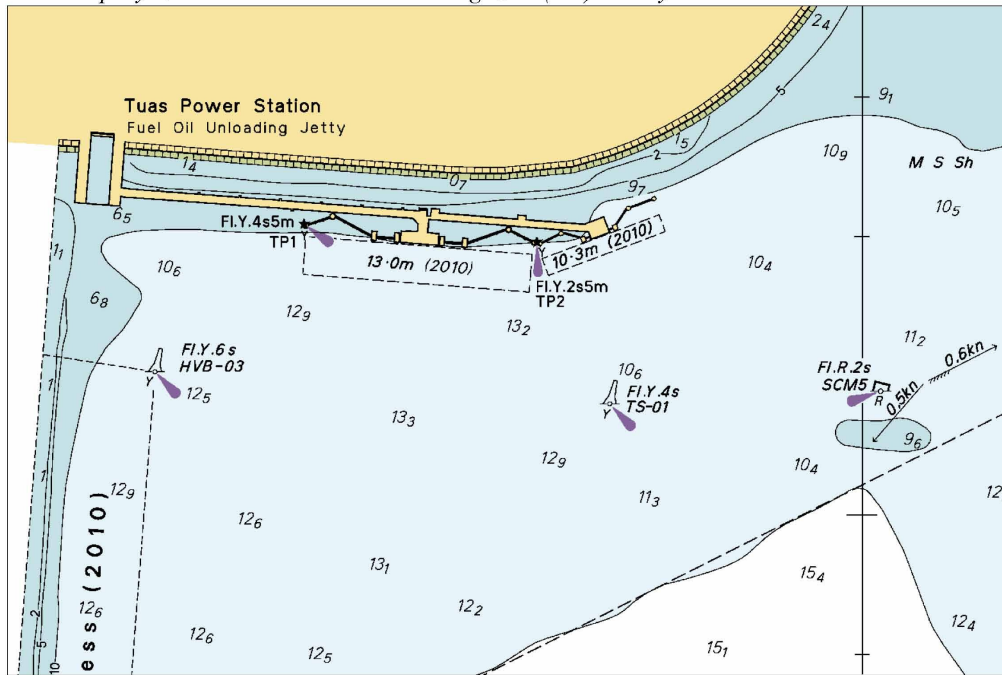
Updated to Admiralty Notices to Mariners Edition No. 39 of 2010 dated 30th September 2010.

V
REPRINT OF ADMIRALTY NOTICES TO MARINERS
FOR DUAL BADGED CHARTS

To accompany Notice to Mariners 4183/10. Image Size (mm) 88.7 by 131.6

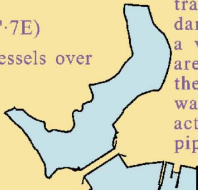


To accompany Notice to Mariners 4183/10. Image Size (mm) 88.6 by 132.2



V
**REPRINT OF ADMIRALTY NOTICES TO MARINERS
 FOR DUAL BADGED CHARTS**

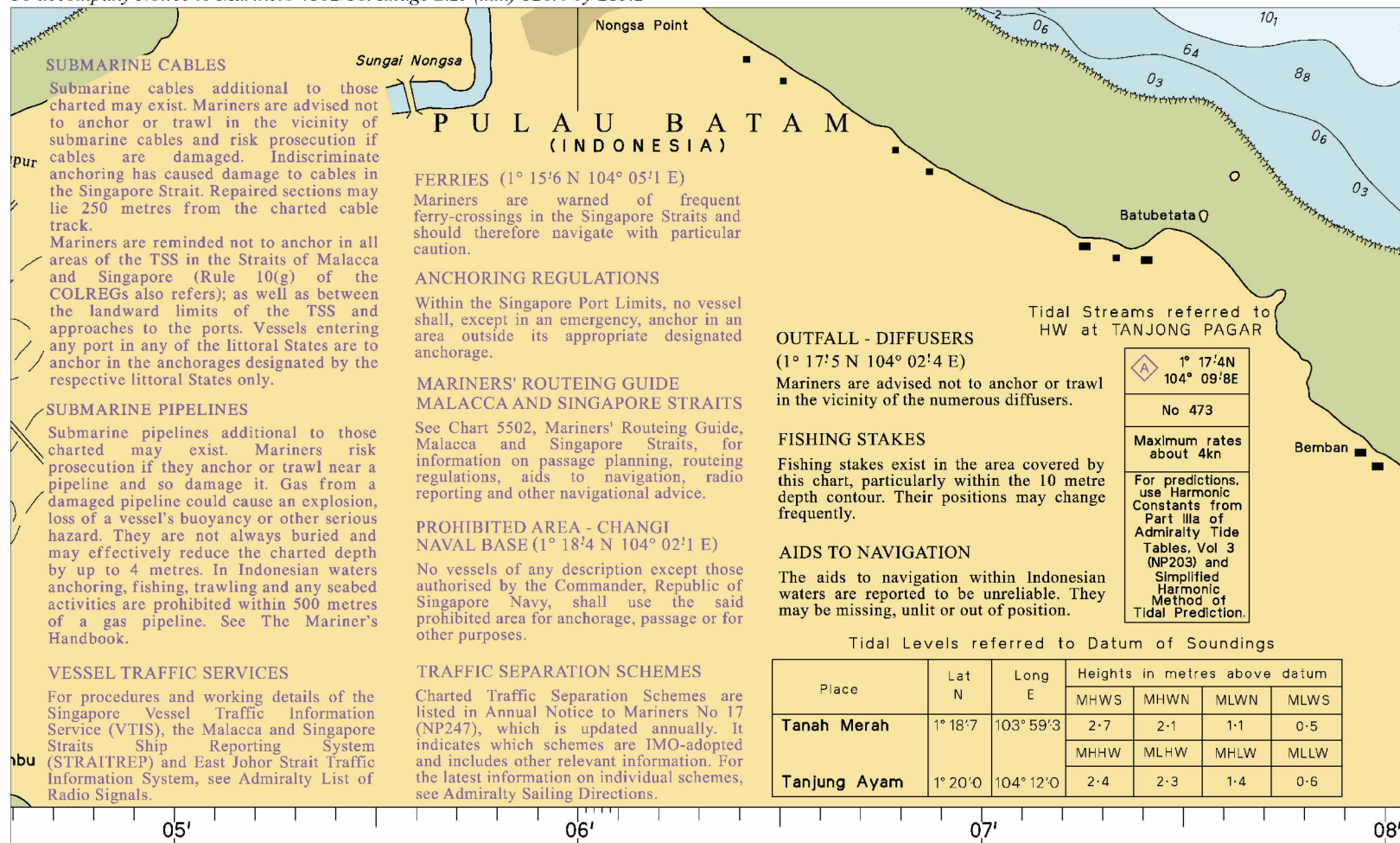
To accompany Notice to Mariners 4182/10. Image Size (mm) 92.7 by 144.9

1'	52'	53'
<p>RESTRICTED AREA (1°18'·2N, 103°59'·1E) Entry into this area is prohibited to all vessels over 15 metres high.</p> <p>FERRIES Mariners are warned of frequent ferry crossings in the Singapore Strait and should therefore navigate with particular caution:-</p> <p>(a) In the Main Strait (1°12'·1N 103°51'·6E) (b) In the approaches to Sisters Fairway (1°12'·8N 103°50'·7E) south west of P. Sakijang Bendera. (c) In the entrance of East Keppel Fairway. (1°13'·1N 103°52'·9E) (d) In the approaches to Tanah Merah Ferry Terminal (1°14'·2N 103°59'·0E ; 1°15'·2N 103°59'·0E & 1°17'·0N 103°58'·8E)</p> <p>RESTRICTED AREA (1°17'·2N 103°58'·7E) Entry into this area is prohibited to all vessels over 49 metres high.</p>	<p>SUBMARINE CABLES Submarine cables additional to those charted may exist. Mariners are advised not to anchor or trawl in the vicinity of submarine cables and risk prosecution if cables are damaged. Indiscriminate anchoring has caused damage to cables in the Singapore Strait. Repaired sections may lie 250 metres from the charted cable track. Mariners are reminded not to anchor in all areas of the TSS in the Straits of Malacca and Singapore (Rule 10(g) of the COLREGs also refers); as well as between the landward limits of the TSS and approaches to the ports. Vessels entering any port in any of the littoral States are to anchor in the anchorages designated by the respective littoral States only.</p> <p>SUBMARINE PIPELINES Submarine pipelines additional to those charted may exist. Mariners risk prosecution if they anchor or trawl near a pipeline and so damage it. Gas from a damaged pipeline could cause an explosion, loss of a vessel's buoyancy or other serious hazard. They are not always buried and may effectively reduce the charted depth by up to 4 metres. In Indonesian waters anchoring, fishing, trawling and any seabed activities are prohibited within 500 metres of a gas pipeline. See The Mariner's Handbook.</p>	

Block for Chart No 4041

V
REPRINT OF ADMIRALTY NOTICES TO MARINERS
FOR DUAL BADGED CHARTS

To accompany Notice to Mariners 4182/10. Image Size (mm) 128.4 by 215.2



Block for Chart No 4042

V
REPRINT OF ADMIRALTY NOTICES TO MARINERS
FOR DUAL BADGED CHARTS

To accompany Notice to Mariners 4182/10. Image Size (mm) 130 by 187.9

<p>MARINERS' ROUTEING GUIDE MALACCA AND SINGAPORE STRAITS</p> <p>See Chart 5502, Mariners' Routing Guide, Malacca and Singapore Straits, for information on passage planning, routeing regulations, aids to navigation, radio reporting and other navigational advice.</p> <p>TRAFFIC SEPARATION SCHEMES</p> <p>Charted Traffic Separation Schemes are listed in Annual Notice to Mariners No 17, which is updated annually. It indicates which schemes are IMO-adopted and includes other relevant information. For the latest information on individual schemes, see Admiralty Sailing Directions.</p> <p>TRAFFIC CROSSING (1°12'·2N 103°32'·6E; 1°08'·8N 103°45'·7E)</p> <p>Mariners are warned that vessels including VLCCs entering and leaving Singapore Port and Pelabuhan Tanjung Pelepas, are likely to cross the traffic lanes in these areas; within Singapore Main Strait they may be constrained in their manoeuvrability.</p> <p>VESSEL REPORTING</p> <p>For details of the following vessel traffic services and reporting systems, see Admiralty List of Radio Signals:</p> <ul style="list-style-type: none"> -Singapore Vessel Traffic Information Service (VTIS) -Malacca and Singapore Straits Ship Reporting System (STRAITREP) -Port Operations. <p>ANCHORING REGULATIONS</p> <p>Within the Singapore Port Limit, no vessel shall, except in an emergency, anchor in an area outside its appropriate designated anchorage.</p> <p>FISHING STAKES</p> <p>Fishing stakes exist in the area covered by this chart, particularly within the 10 metre depth contour. Their positions are frequently changed.</p>	<p>PRECAUTIONARY AREA - SINKI FAIRWAY (1°13'·3N 103°40'·9E)</p> <p>Mariners are to navigate with caution as there may be vessels berthing or unberthing at the VLCC jetties (1°13'·6N 103°40'·9E), or deep draught vessels navigating against the recommended traffic flow. For further details, see Admiralty Sailing Directions.</p> <p>ENTRY PROHIBITED</p> <p>All vessels are prohibited from entering, transiting, anchoring or mooring within these areas unless specific approval has been obtained from the Port Master.</p> <p>RESTRICTED AREA (1°13'·2N 103°42'·9E)</p> <p>No unauthorised vessel shall enter or remain within this area whenever military manoeuvres are conducted.</p> <p>NIPA TRANSIT ANCHORAGE (1°07'·1N 103°37'·5E)</p> <p>This anchorage is for the emergency anchoring of vessels including damaged vessels proceeding for repairs prior to entry into a shipyard or similar matters. Refer to IMO documents SN/Circ.238 and COLREG.2/Circ.54/Add.2 for more details.</p> <p>SUDONG EXPLOSIVES ANCHORAGE (1°10'·9N 103°42'·2E)</p> <p>Entry into this area is prohibited to all vessels over 47 metres high.</p> <p>AIDS TO NAVIGATION</p> <p>The aids to navigation within Indonesian waters are reported to be unreliable. They may be missing, unlit or out of position.</p>	<p>SUBMARINE CABLES</p> <p>Submarine cables additional to those charted may exist. Mariners are advised not to anchor or trawl in the vicinity of submarine cables and risk prosecution if cables are damaged. Indiscriminate anchoring has caused damage to cables in the Singapore Strait. Repaired sections may lie 250 metres from the charted cable track.</p> <p>Mariners are reminded not to anchor in all areas of the TSS in the Straits of Malacca and Singapore (Rule 10(g) of the COLREGs also refers); as well as between the landward limits of the TSS and approaches to the ports. Vessels entering any port in any of the littoral States are to anchor in the anchorages designated by the respective littoral States only.</p> <p>SUBMARINE PIPELINES</p> <p>Submarine pipelines additional to those charted may exist. Mariners risk prosecution if they anchor or trawl near a pipeline and so damage it. Gas from a damaged pipeline could cause an explosion, loss of a vessel's buoyancy or other serious hazard. They are not always buried and may effectively reduce the charted depth by up to 4 metres. In Indonesian waters anchoring, fishing, trawling and any seabed activities are prohibited within 500 metres of a gas pipeline. See The Mariner's Handbook.</p> <p>JONG FAIRWAY (1° 13'·0N 103° 47'·7E)</p> <p>Jong Fairway is a two-way traffic channel. The general direction of travel follows the direction of the fairway. Mariners navigating in Jong Fairway are to navigate with caution as there may be vessels berthing/unberthing at Pulau Sebarok, Pulau Bukom, or joining the fairway from the adjoining anchorages. For further details, see Admiralty Sailing Directions.</p>																									
20000 Feet	<p>Tidal Levels referred to Datum of Soundings</p> <table border="1"> <thead> <tr> <th rowspan="2">Place</th> <th rowspan="2">Lat N</th> <th rowspan="2">Long E</th> <th colspan="4">Heights in metres above datum</th> </tr> <tr> <th>MHWS</th> <th>MHWN</th> <th>MLWN</th> <th>MLWS</th> </tr> </thead> <tbody> <tr> <td>Raffles</td> <td>1°09'·6</td> <td>103°44'·5</td> <td>2·9</td> <td>2·1</td> <td>1·2</td> <td>0·4</td> </tr> <tr> <td>Bukom</td> <td>1°13'·5</td> <td>103°46'·7</td> <td>2·8</td> <td>2·1</td> <td>1·1</td> <td>0·4</td> </tr> </tbody> </table>	Place	Lat N	Long E	Heights in metres above datum				MHWS	MHWN	MLWN	MLWS	Raffles	1°09'·6	103°44'·5	2·9	2·1	1·2	0·4	Bukom	1°13'·5	103°46'·7	2·8	2·1	1·1	0·4	02'
Place	Lat N				Long E	Heights in metres above datum																					
		MHWS	MHWN	MLWN		MLWS																					
Raffles	1°09'·6	103°44'·5	2·9	2·1	1·2	0·4																					
Bukom	1°13'·5	103°46'·7	2·8	2·1	1·1	0·4																					

Block for Chart No 4039

SINGAPORE ELECTRONIC NAVIGATIONAL CHART (ENC) DISTRIBUTORS

Please approach any of the appointed distributors to purchase the Singapore ENC.

DISTRIBUTOR	ADDRESS	TELEPHONE/FAX NO./EMAIL/WEBSITE
DPM (Singapore) Pte Ltd	1 Maritime Square, #09-72 HarbourFront Centre, Singapore 099253	Tel. No.: +65 6270 4060 Fax No.: +65 6276 3858 Email: sales@dpsmsingapore.com.sg Website: http://www.dpsmsingapore.com.sg
Motion Smith	15 Jalan Kilang Barat #08-01/05 Frontech Centre Singapore 159357	Tel. No.: +65 6220 5098 Fax No.: +65 6225 4902 Email: sales@motsmith.com Website: http://www.motsmith.com
Transas Marine Pacific Pte Ltd	Cyber Centre 16 & 18 Jalan Kilang Barat Singapore 159358	Tel. No.: +65 6271 0200 Fax No.: +65 6271 7300 Email: dominic@transas.com.sg Website: http://www.transas.com.sg
Vector Services Pte Ltd	15 West Coast Highway, #02-14A Pasir Panjang Building Singapore 117861	Tel. No.: +65 6777 3602 Fax No.: +65 6777 9203 Email: kwchoy@pacific.net.sg
ChartWorld GmbH	Ruhrstrasse 90, D-22761 Hamburg, Germany	Tel. No.: +49 40 853 58 6942 Fax No.: +49 40 853 58 6949 Email: sales@chartworld.com Website : http://www.chartworld.com
Japan Hydrographic Association Electronic Charts Division	Daiichi Sogo Bldg, 6F 1-6-6, Hanedakuko, Ota-ku, Tokyo 144-0041, Japan	Tel. No.: +81 3 5708 7093 Fax No.: +81 3 5708 7094 Email: shimizu-6kj@jha.jp Website: http://www.jha.or.jp/en/jha/
Jeppesen Norway A/S	P.O Box 212 , N-4371 Egersund, Norway	Tel No.: +47 514 64 700 Fax No: +47 514 64 701 Email: license.marine@jeppesen.com Website : http://www.jeppesen.com
PRIMAR STAVANGER	Lervigsveien 36, P.O Box 60, N-4001 Stavanger, Norway	Tel. No.: +47 51 93 9500 Fax No.: +47 51 93 9501 Email: sales@ecc.no Website : http://www.primar.no
United Kingdom Hydrographic Office	Admiralty Way, Taunton, Somerset TA1 2DN United Kingdom	Tel. No.: +44 1823 337900 Fax No.: +44 1823 284077 Emails: ENC.SalesReports@ukho.gov.uk Website: http://www.ukho.gov.uk

Agents for the Maritime and Port Authority of Singapore Nautical Charts and Publications

Agent's Name : **DPM (Singapore) Pte Ltd**
Address : 1 Maritime Square #09-72, HarbourFront Centre,
Singapore 099253
Telephone : (65) 6270 4060
Fax No. : (65) 6276 3858
E-mail : sales@dpmsingapore.com.sg
Internet Web Site : <http://www.dpmsingapore.com.sg>

Agent's Name : **E.W. Liner Charts & Publications Pte Ltd**
Address : 102F, Pasir Panjang Road, #08-01, Citilink Warehouse Complex,
Singapore 118530
Telephone : (65) 6323 0773
Fax No. : (65) 6323 0775
E-mail : ewliner@singnet.com.sg
Internet Web Site : <http://www.ewliner.com>

Agent's Name : **Motion Smith**
Address : 15 Jalan Kilang Barat
#08-01/05 Frontech Centre,
Singapore 159357
Telephone : (65) 6220 5098
: (After office hours: 8163 9993)
Fax No. : (65) 6225 4902
E-mail : sales@motsmith.com
Internet Web Site : <http://www.motsmith.com>

HYDROGRAPHIC NOTE - Instructions

1. Mariners are requested to notify the Chief Hydrographer, Maritime and Port Authority of Singapore, when new or suspected dangers to navigation are discovered, changes are observed in aids to navigation or where corrections to nautical publications may be necessary. Reports, which cannot be confirmed or are lacking in certain details should not be withheld.
2. Any ambiguities of time, positioning and depth should be stressed and any firm expectation of being able to check the information provided on a following voyage should be mentioned.
3. Mariners using satellite position fixing systems, eg. GPS, should provide details of equipment and datum used (where applicable). Where bearings (true or magnetic) are taken visually or by radar to fix a position, it should include more than two objects in order to provide a check on its accuracy. A position may also be defined by bearing and distance from a conspicuous object eg. beacon, lighthouse etc.
4. The note should include a tracing or a digital image of the chart used and the details should be clearly marked.
5. Echo sounders frequently register greater depths than the advertised maximum depth for the equipment, eg. a trace appearing at 50 metres may be in fact be 550 metres or even 1050 metres for equipment whose maximum depth is 500 metres. Erroneous depths caused by 2nd transmission error can usually be recognised by the following:
 - (a) the tracing being weaker than normal for the depth registered,
 - (b) the trace appearing to pass through the transmission line,
 - (c) the feathery nature of the trace.
6. Upon receipt of a hydrographic note, a Notice to Mariners may be issued. The sender's vessel or name is quoted as the source unless the same information is also received in foreign Notices to Mariners.
7. Reports of shoals, uncharted dangers and defects in aids to navigation may also be made to the appropriate Singapore Port Operations Control Centre on VHF Channels 10, 12, 14, 68 or 73.

HYDROGRAPHIC NOTE

To:

Chief Hydrographer
Hydrographic Department
Maritime and Port Authority of Singapore
460 Alexandra Road PSA Building #20-00
Singapore 119963

Tel : (65) 6375 1227
Fax : (65) 6278 7646
Email : hydrographic@mpa.gov.sg

Sender's Contact Details :

Date :

Name of Vessel :

Address of Sender :

Tel : Fax :

Email :

Nature of Observation :

General Location :

Subject :

Position : Lat. Long.

Charts Used :

Date & Time of Observation :

Details :

.....

.....

.....

Attachment :

Equipment Used :

Type of Position Fixing : GPS / DGPS Others :

Type of Echo Sounder :

Name and Signature :

Ship's/Company's Stamp :