



SINGAPOREAN NOTICES TO MARINERS

SECTION	CONTENT	Page
I	Index of Charts & Publications	176
II	New Publications	179
	Notices to Mariners and Chart Corrections	184
	Temporary and Preliminary Notices	185
III	Navigational Information	188
	Amendments to Publications	189
IV	Reprint of Radio Navigational Warnings	190
V	Reprint of Admiralty Notices to Mariners for Dual Badged Charts	191

The monthly Notices to Mariners contain corrective information affecting charts published by the Hydrographic Department, Maritime and Port Authority of Singapore. The information contained in these Notices should be updated on the charts affected. Notices under Section II apply only to the particular Singaporean Chart(s) indicated.

Mariners are requested to notify the Chief Hydrographer, Maritime and Port Authority of Singapore, immediately on the discovery of new dangers or suspected dangers to navigation and of changes or defects in aids to navigation. See Hydrographic Note on back page.

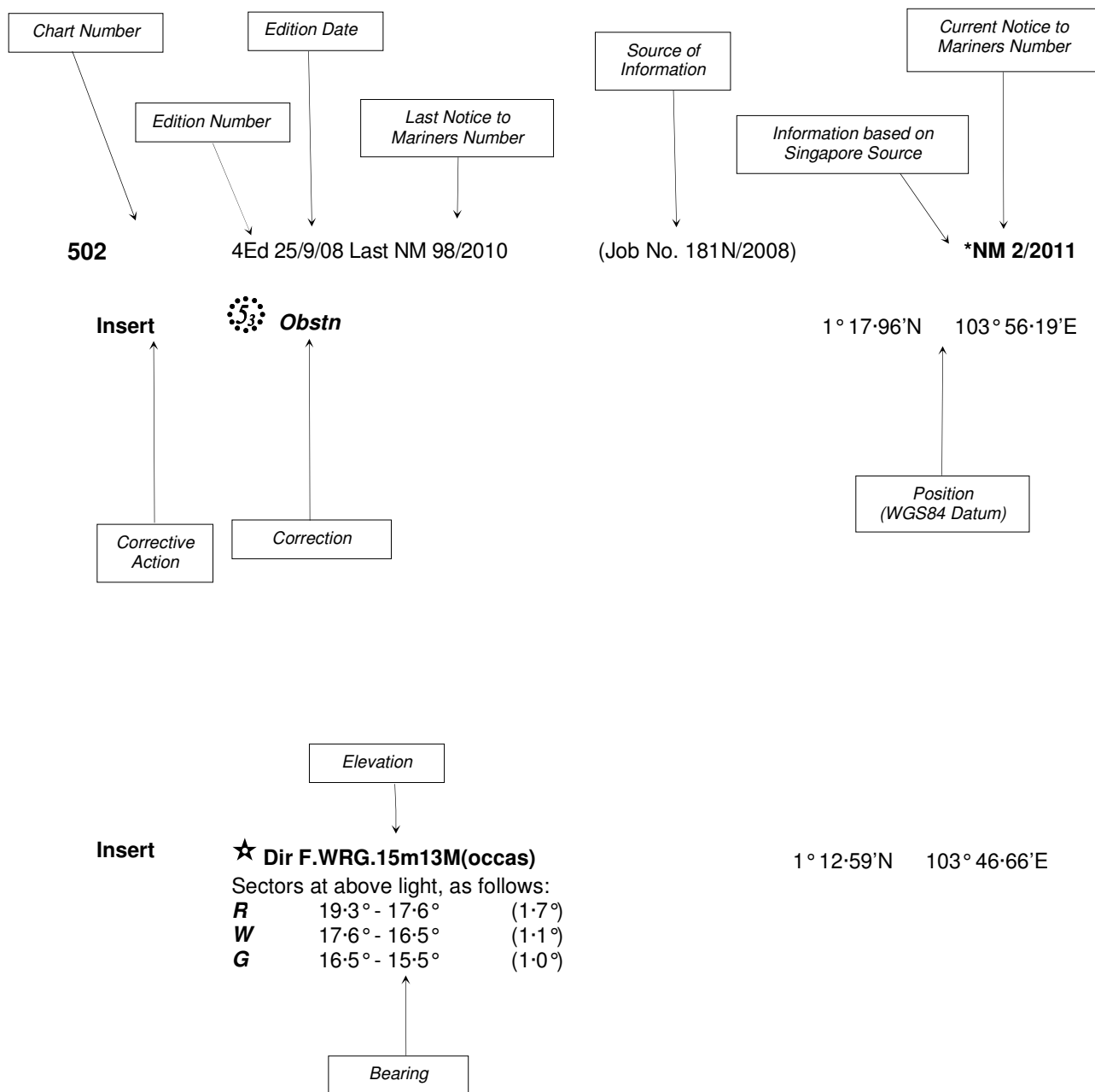
The monthly Singaporean Notices to Mariners can be accessed directly from the MPA website:
[http://www.mpa.gov.sg/sites/port_and_shipping/circulars_and_notices/singapore_notices_to_mariners\(ntm\).page](http://www.mpa.gov.sg/sites/port_and_shipping/circulars_and_notices/singapore_notices_to_mariners(ntm).page)

This service is offered free of charge.

Hydrographic Department
Maritime and Port Authority of Singapore
460 Alexandra Road
PSA Building #20-00
Singapore 119963
Tel: (65) 6375 1227
Fax: (65) 6278 7646

EXPLANATION OF FORMAT

The elements of a typical chart correction are explained below.



Notes:

- a) Notice to Mariners number followed by:
T indicates a Temporary Notice (eg. ***NM 3T/2011**).
P indicates a Preliminary Notice (eg. ***NM 4P/2011**).
- b) Bearings are true reckoned clockwise from 000° to 359°; those relating to lights are from seaward.
- c) Heights and elevations are above Mean High Water Springs.

I
INDEX OF CHARTS AND PUBLICATIONS

INDEX OF AFFECTED CHARTS

DESCRIPTION	NOTICE NO.	PAGE NO.
Index of Singaporean Charts	-	176
Index of Dual Badged Charts	-	177
Index of Singapore Electronic Navigational Chart (ENC)	-	178
New Edition Singaporean Charts	-	179
New Edition Dual Badged Charts	-	179, 180
Singapore Tide Tables 2012	-	181 to 183
Singaporean Chart SP1/GSP1	*81, *82	184
Temporary and Preliminary Notices	*83T, 84T, 85P, 86T	185 to 187
Port Marine Notices	*87	188
Singaporean Print-On-Demand (POD) Charts	*88	188
Amendments to Publications	*89	189
Reprint of Radio Navigational Warnings	-	190
Reprint of Admiralty Notices to Mariners for Dual Badged Charts	-	191 to 194
Singapore Electronic Navigational Chart (ENC) Distributors	-	195
Chart Agents for the Maritime and Port Authority of Singapore Nautical Charts and Publications	-	195

*Denotes information are based on Singaporean source.

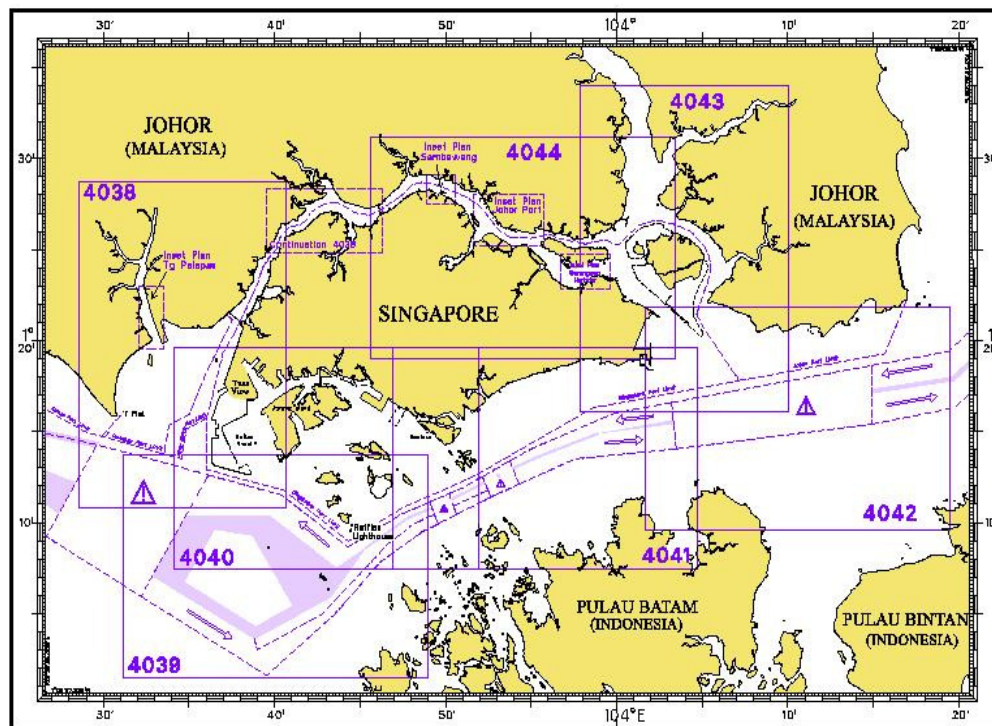
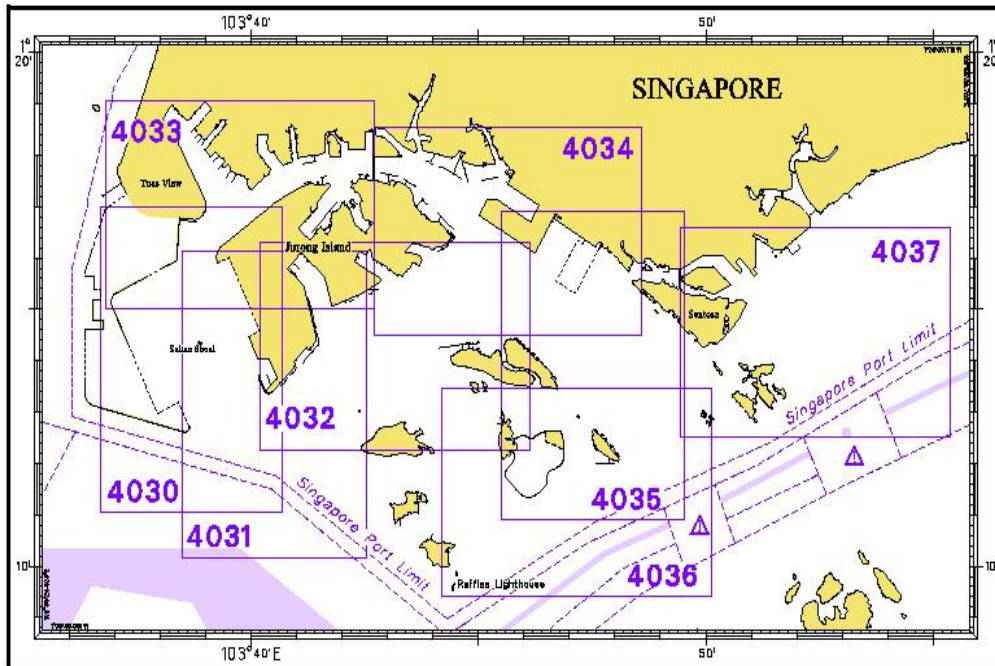
I
INDEX OF CHARTS AND PUBLICATIONS

INDEX OF NOTICES

NOTICE NO.	DESCRIPTION	PAGE NO.
-	Index of Singaporean Charts	176
-	Index of Dual Badged Charts	177
-	Index of Singapore Electronic Navigational Chart (ENC)	178
-	New Edition Singaporean Charts	179
-	New Edition Dual Badged Charts	179, 180
-	Singapore Tide Tables 2012	181 to 183
*81, *82	Singaporean Chart SP1/GSP1	184
*83T, 84T, 85P, 86T	Temporary and Preliminary Notices	185 to 187
*87	Port Marine Notices	188
*88	Singaporean Print-On-Demand (POD) Charts	188
*89	Amendments to Publications	189
-	Reprint of Radio Navigational Warnings	190
-	Reprint of Admiralty Notices to Mariners for Dual Badged Charts	191 to 194
-	Singapore Electronic Navigational Chart (ENC) Distributors	195
-	Chart Agents for the Maritime and Port Authority of Singapore Nautical Charts and Publications	195

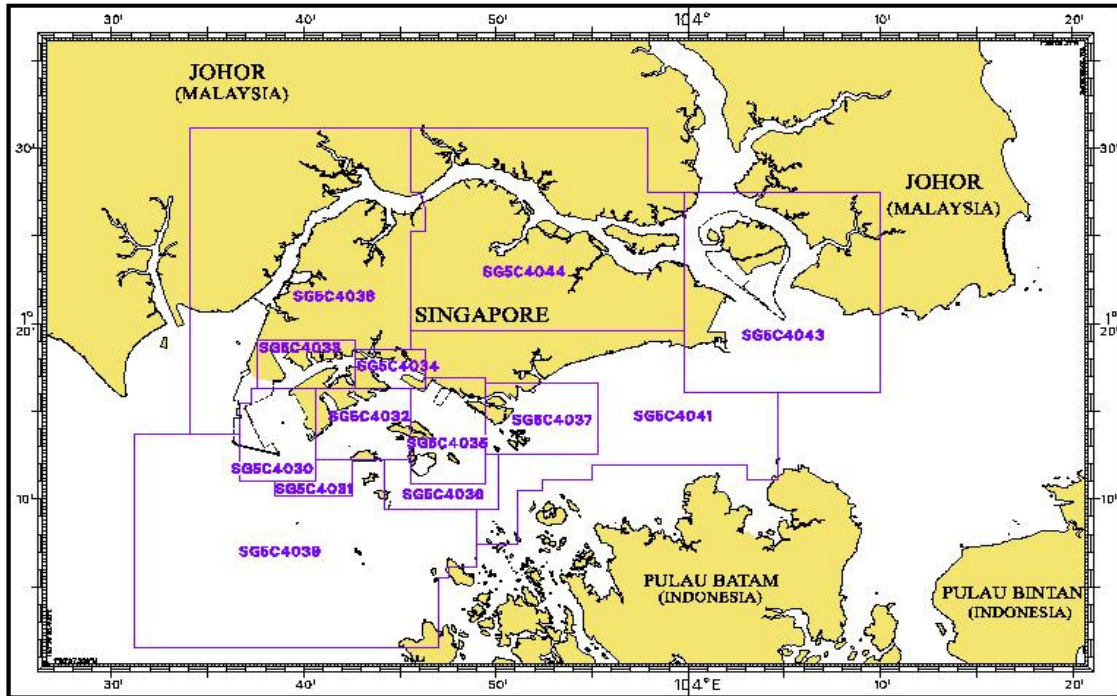
* Denotes information are based on Singaporean source.

I
INDEX OF CHARTS AND PUBLICATIONS
INDEX OF DUAL BADGED CHARTS



I INDEX OF CHARTS AND PUBLICATIONS

INDEX OF SINGAPORE ELECTRONIC NAVIGATIONAL CHART (ENC)



COVERAGE OF SINGAPORE ELECTRONIC NAVIGATIONAL CHART (ENC)

ENC Name	ENC Coverage	ENC Edition (Release 2010.1)
SG5C4030	West Jurong Anchorages and Temasek Fairway	4 th Edition (28/10/2010)
SG5C4031	Western Approaches to Jurong Island	4 th Edition (28/10/2010)
SG5C4032	Sinki Fairway	6 th Edition (27/04/2011)
SG5C4033	Tuas Bay, West Jurong Channel and Pesek Basin	4 th Edition (28/10/2010)
SG5C4034	East Jurong Channel, Pasir Panjang Terminal and West Keppel Fairway	9 th Edition (29/09/2011)
SG5C4035	Western Anchorages, Jong Fairway and Cruise Bay	10 th Edition (29/09/2011)
SG5C4036	Raffles Lighthouse to The Sisters	5 th Edition (27/04/2011)
SG5C4037	Keppel Harbour, Tanjong Pagar Terminal and Approaches	5 th Edition (27/04/2011)
SG5C4038	Johor Strait – Western Part	4 th Edition (28/10/2010)
SG5C4039	Western Approaches to Main Strait	4 th Edition (11/08/2011)
SG5C4041	Pulau Sebarok to Changi	5 th Edition (11/08/2011)
SG5C4043	Kuala Johor and Sungai Johor	6 th Edition (28/07/2011)
SG5C4044	Johor Strait – Eastern Part	6 th Edition (28/07/2011)

II NEW PUBLICATIONS

NEW EDITION SINGAPOREAN CHARTS PUBLISHED ON 22ND SEPTEMBER 2011

Chart Number : 200
Title : Malacca Strait – Port Klang To Tanjung Keling
Coverage : Lat 02°01'48"N 03°11'99"N
 Long 100°26'36"E 102°09'91"E
Scale : 1: 200 000
Date Published : 22nd September 2011
Size of Chart : 960·0 x 650·0 mm
Remarks : This new edition includes 40 Ntm corrections, new submarine cables, contours and depths extracted from BA Chart 3946. The existing chart of the same number published on 30th November 2005 is superseded.

Chart Number : 502
Title : Singapore Strait – Eastern Part
Coverage : Lat 01°07'00"N 01°24'61"N
 Long 103°51'43"E 104°17'31"E
Scale : 1: 50 000
Date Published : 22nd September 2011
Size of Chart : 960·0 x 649·2 mm
Remarks : This new edition includes new submarine cables and data from latest surveys covering the following areas:

- Eastern Anchorages
- Eastern Special Purposes D Anchorage
- Changi General Purposes Anchorage
- Johor Shoal
- Eastern Fairway
- East Keppel Fairway
- South of Pulau Tekong
- Around west of Pulau Batam
- South of Batu Berhanti

 : The existing chart of the same number published on 25th September 2008 is superseded.

NEW EDITION DUAL BADGED CHARTS PUBLISHED ON 29TH SEPTEMBER 2011

Chart Number : 4034
Title : Port of Singapore – East Jurong Channel, Pasir Panjang Terminal and West Keppel Fairway
Coverage : Lat 01°14'50"N 01°18'55"N
 Long 103°42'70"E 103°48'60"E
Scale : 1: 10 000
Date Published : 29th September 2011
Size of Chart : 1094·3 x 746·3 mm
Remarks : This new edition includes latest surveys covering the following areas:

- Pasir Panjang Basin
- Pasir Panjang Terminal
- East Jurong Channel – area around buoy W3
- Tanjong Penjuru – Chevron Jetties
- Portion of Sungei Pandan

 : The existing chart of the same number published on 14th April 2011 is superseded.

II NEW PUBLICATIONS

NEW EDITION DUAL BADGED CHARTS PUBLISHED ON 29TH SEPTEMBER 2011

Chart Number : 4035
Title : Port of Singapore – Western Anchorages, Jong Fairway and Cruise Bay
Coverage : Lat 01°10-90'N 01°16-90'N
Long 103°45-50'E 103°49-54'E
Scale : 1: 10 000
Date Published : 29th September 2011
Size of Chart : 749·4 x 1105·7 mm
Remarks : This new edition includes latest surveys covering the following areas:

- Shell SBM Area
- Area West of Pulau Sebarok
- East Jurong Channel – area around buoy W3
- Approaches to Berths P18 – P22 of Pasir Panjang Terminal
- Selat Chermin

The existing chart of the same number published on 14th April 2011 is superseded.

II NEW PUBLICATIONS

PUBLICATION OF SINGAPORE TIDE TABLES YEAR 2012

Summary of Publication

This 251-page book contains Tidal Height and Tidal Stream Predictions covering stations in Singapore port waters and along the Malacca and Singapore Straits.

A new Tidal Stream Predictions station (Main Strait – off Tuas View) is included in the publication. This publication consist of 5 main segments to facilitate easy reference.

1. **High and Low Water Predictions** at the following stations:
 - a) Tanjong Pagar
 - b) Sembawang

2. **Hourly Tidal Height Predictions** at the following stations:
 - a) Tuas
 - b) Raffles Lighthouse
 - c) West Coast
 - d) Bukom
 - e) Tanjong Pagar
 - f) Tanah Merah
 - g) Tanjong Changi
 - h) Sembawang
 - i) Singapore Strait - Horsburgh Lighthouse

3. **Hourly Tidal Stream Predictions** at the following stations:
 - a) **Main Strait – off Tuas View**
 - b) Jong Fairway – Sisters Buoy
 - c) Main Strait – off Gusong Boarding Ground (formerly Gusong Beacon)
 - d) Sentosa
 - e) East Buran
 - f) Main Strait – Eastern Petroleum A
 - g) Kuala Johor – off Malang Tiga

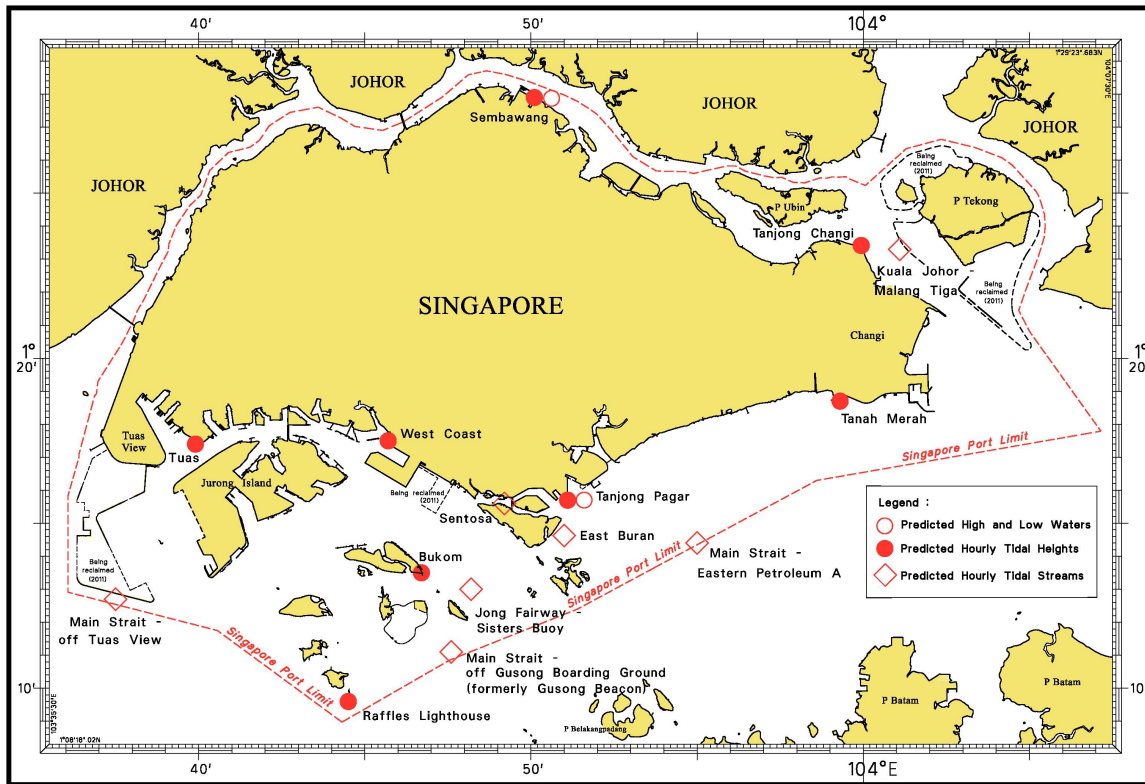
4. **Maximum and Slack Tidal Stream Predictions** at the following stations:
 - a) Malacca Strait – Off The Brothers Light
 - b) Singapore Strait – Selat Phillip
 - c) Singapore Strait – Karang Banteng (Buffalo Rock)
 - d) Singapore Strait - Horsburgh Lighthouse

5. **Malacca Strait – High and Low Water Predictions** at the following stations:
 - a) Kedah Pier, Pulau Pinang
 - b) Port Dickson
 - c) Kual Batu Pahat

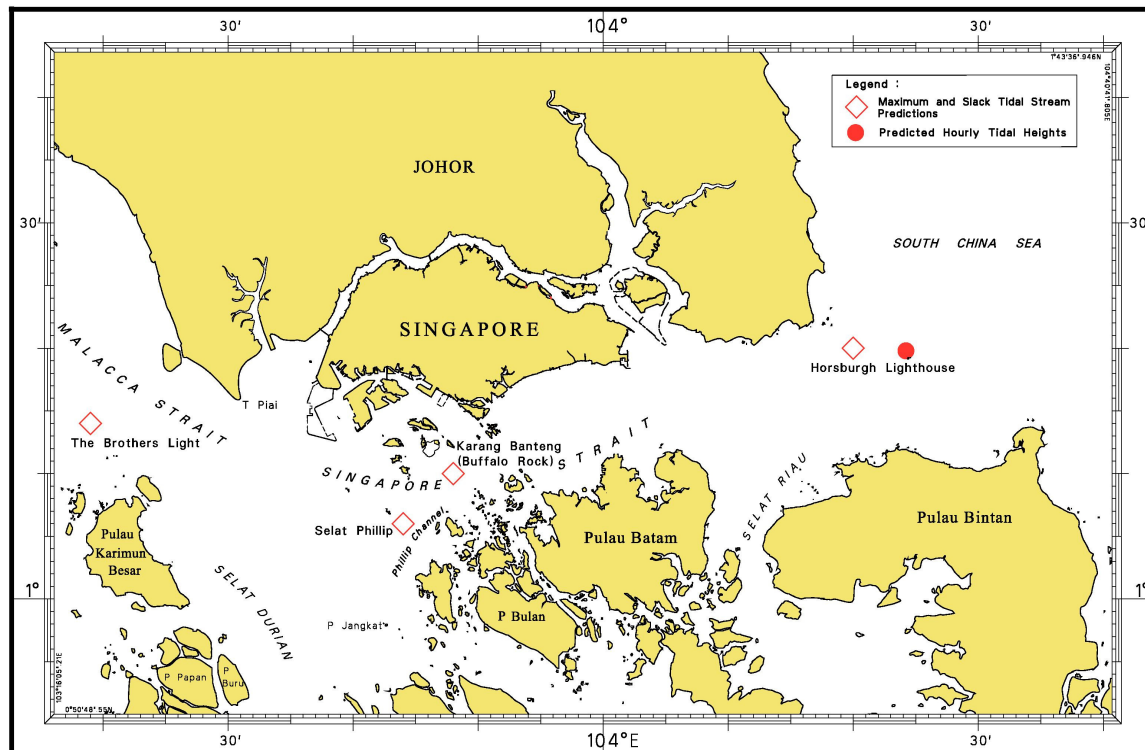
The locations of the above stations are shown in the chartlets below:

II NEW PUBLICATIONS

Tidal Prediction Stations within Singapore port waters



Tidal Prediction Stations in Malacca and Singapore Straits



II NEW PUBLICATIONS

Tidal Prediction Stations in Malacca Strait





This publication is available from the following Chart Agents:

1. DPM (Singapore) Pte Ltd
2. E.W. Limer Charts & Publications Pte Ltd
3. Motion Smith

(Please refer Page 195 for details)

II
NOTICES TO MARINERS AND CHART CORRECTIONS

SP1/GSP1	6 Ed 27/1/11 Last NM 73/2011	(HD/HY/C00105211)	*NM 81/2011
Insert	 Obstn		1°14·35'N 103°49·65'E
		(HD/HE025/74/11)	*NM 82/2011
Insert			1°12·94'N 103°44·76'E

II TEMPORARY AND PRELIMINARY NOTICES

(NM *83T/2011) INSTALLATION OF TEMPORARY BUOY AT SELAT PAUH

Mariners are advised that a temporary yellow pillar light buoy has been installed at Selat Pauh. The details are as follows:

1. Name : DSO 'B1'
2. Position : Lat 1°12'95"N Long 103°44'43"E
3. Light Characteristics : Fl.Y.4s

Remarks : The buoy was installed on 23rd August 2011 and the duration of its usage is for a period of 4 months.

Charts affected : GSP1/SP1, 202, 500, 501, 4032, 4036, 4039 and 4040.

Source : HD/HE025/58/2011

(NM 84T/2011) REPLACEMENT OF BUOYS AT MV B OCEANIC WRECK

Mariners are advised that an isolated danger mark light buoy has been replaced by a cardinal buoy on the MV B Oceanic wreck. The details are as follows :

1. Name : North Cardinal Mark
2. Position : Lat 1°24'95"N Long 103°08'01"E
3. Light Characteristic : Q.Fl
4. Name : East Cardinal Mark
5. Position : Lat 1°24'71"N Long 103°08'32"E
6. Light Characteristic : Q.Fl(3)10s
7. Name : West Cardinal Mark
8. Position : Lat 1°24'63"N Long 103°07'84"E
9. Light Characteristic : Q.Fl(9)15s

Remarks : As salvage work is being conducted in the area, Mariners are advised to navigate with caution when in the vicinity.

Charts affected : 201, 202 and 500.

Source : Marine Department Peninsular Malaysia Notice to Mariners No. 61T and 62T/2011.

II TEMPORARY AND PRELIMINARY NOTICES

(NM 85P/2011) WORKING AREA ESTABLISHED OFF THE COAST OF PENGERANG, JOHOR

This is to notify that a working area has been established for dredging and reclamation works for the development of an Independent Deepwater Terminal off the coast of Pengerang, district of Kota Tinggi Johor, within the Pasir Gudang port limit and the details are as follows:

	Working Area	
	Latitude	Longitude
1.	1° 20·61'N	104° 09·07'E
2.	1° 18·50'N	104° 08·83'E
3.	1° 18·91'N	104° 11·35'E
4.	1° 20·76'N	104° 11·57'E

Remarks : All vessels are required to keep clear of the working area and to navigate with caution when in the vicinity.

Charts affected : 202, 502, 4042 and 4043.

Source : Marine Department Malaysia, Southern Region, Port Circular No. 9 and 11/2011.

(NM 86T/2011) ASIA SUBMARINE CABLE EXPRESS (ASE) – Pre-Lay Grapnel Run & Route Clearance (PLGR/RC)

Remark : The PLGR/RC shall be executed at Sector 9, in way of the Precautionary Area, and via the Eastbound Lane of the Traffic Separation Scheme (TSS), thence through the eastern entrance of the TSS, Singapore Strait.

Work Vessel : WAKASHIO MARU (Call Sign : 9V6594)

Date of Survey : With effect from 30th October to 8th November 2011.

Operating hours : Daylight hours 0700 to 1900 only

1. The Pre-Lay Grapnel Run and Route Clearance (PLGR/RC) of the submarine cable routes are listed as follows :

RPL No.	(RPL Co-ordinates: WGS84)		Remarks
	Latitude (N)	Longitude (E)	
Point 1	1° 17·04'	104° 02·85'	From Point 1 to Point 2
Point 2	1° 14·41'	104° 05·51'	Point 2 to Point 3
Point 3	1° 16·09'	104° 14·91'	Point 3 to Point 4
Point 4	1° 17·13'	104° 18·97'	Point 4 to Point 5
Point 5	1° 18·75'	104° 22·18'	Point 5 to Point 6
Point 6	1° 27·93'	104° 33·18'	End at Point 6

II
TEMPORARY AND PRELIMINARY NOTICES

2. Charts affected : GSP1, SP1, 202, 502, 4041, 4042 and 4043.
3. Mariners are advised
 - a) to navigate with caution.
 - b) not to anchor or trawl in the vicinity of the cable route.
 - c) to give a wide berth with a minimum safety distance of 250 metres on either side of the work vessel.

Source : HD/DB67/7/2011.

III NAVIGATIONAL INFORMATION

*(NM 87/2011) PORT MARINE NOTICES

The following PMNs have been shortlisted, as they would be of particular interest to mariners.

These notices can be accessed directly from MPA website:

http://www.mpa.gov.sg/sites/port_and_shipping/circulars_and_notices/port_marine_notices.page

PMN No.	Subject
107/2011	Construction of SLNG Terminal at Jurong Island.
108/2011	Underwater drilling and blasting works at Pasir Panjang Fairway,
111/2011	Construction works at Keppel Shipyard.
113/2011	Construction works at Shell, Pulau Bukom Wharf No. 9.
119/2011	Construction works at Sembawang Shipyard.
122/2011	Marine construction works off Marina Barrage.
123/2011	Dredging works off Cyrene Reefs and Jong Fairway.
125/2011	Construction works at Vopak Terminal, Jurong Island.
128/2011	Dredging works off Sembawang Wharves.
129/2011	Construction of wharf at Tuas South.

*(NM 88/2011) SINGAPOREAN PRINT-ON-DEMAND (POD) CHARTS

Print-On-Demand (POD) Charts are the most up-to-date paper nautical charts printed for navigational use. These nautical charts are produced in accordance with the International Hydrographic Organisation (IHO) charting specifications. These official nautical charts are continually updated to the latest Notices to Mariners before they are printed and sold to users.

These POD Charts include SP1/GSP1, 200, 201, 202, 500, 501, 502 and 503.

BENEFITS TO OUR CUSTOMERS

Convenience

Customers need not make numerous hand corrections to the nautical charts before use. In addition the updated POD Charts are more accurate and reliable than offset printed charts with hand corrections.

Clarity

Clarity in the presentation of updated information as compared to lithographic printed charts, where in some cases there are several overlapping corrections over existing information.

Coverage

The POD Charts cover the Malacca and Singapore Straits, from One Fathom Bank to Horsburgh Lighthouse.

III
AMENDMENTS TO PUBLICATIONS

***(NM 89/2011) UPDATING OF PUBLICATION "SINGAPORE PORT INFORMATION 2010/2011"**

1. Page 96

DEPTHS OF NAVIGATIONAL CHANNELS AND FAIRWAYS

Insert the following:

LOCATIONS	DEPTHS (m)		REMARKS
	Delete	Insert	
Temasek Fairway	14.8	15.3	

Source: Berth List dated 5th September 2011

2. Page 151

WHARVES AND BERTHS

JURONG ISLAND (PETROCHEMICAL CORPORATION OF SINGAPORE)(1°15.9'N, 103°43.0'E)

Insert the following:

Berth	Depth Alongside (Year Surveyed)	
	Delete	Insert
No. 3 (Liquid)	7.7m (2006)	10.0m (2011)

Source: HD/HY Code E00102811

3. Page 159 – Item 44a

Insert the following:

JURONG ISLAND (STOLTHAVEN TERMINAL JETTY)(1°16.6'N, 103°39.8'E)

Berth	Length of Berth	Depth Alongside (Year Surveyed)	Controlling Depth In Approaches
1 (OST1)	203.5m	35.5m	-

Source: Berth List and HD/HY/H00101711

IV
REPRINT OF RADIO NAVIGATIONAL WARNINGS

The following Radio Navigational Warnings have been shortlisted, as they would be of particular interest to mariners.

TT173

VESSELS IN EAST JOHOR STRAIT ARE ADVISED TO NAVIGATE WITH CAUTION WHEN NEAR THE PROJECT AREAS OFF PULAU TEKONG, CHANGI AND MALANG PAPAN AS SHALLOW WATER AREAS EXIST. VESSELS ARE ADVISED TO KEEP LOOKOUT FOR TUGS AND BARGES NAVIGATING NEAR THE PROJECT AREAS AND PASSENGER FERRIES CROSSING BETWEEN CHANGI AND PULAU TEKONG AND VICINITY OF PASIR GUDANG.

TT619

DREDGER "ANDROMEDA V" IS CONDUCTING DREDGING OPERATIONS IN COORDINATES:

01°14.890' N 103°58.120' E

01°16.210' N 104°01.630' E

01°16.090' N 104°01.670' E

01°14.680' N 103°58.200' E

VESSELS ARE TO KEEP CLEAR OF THE WORKING VESSEL.

TT753

A SMALL WOODEN CARGO BOAT 10M IN LENGTH SUNK AT 01°15.73'N 103°32.10'E.

TT884

SALVAGE OPERATIONS UNDERWAY IN 01°13.40'N 103°57.75'E. ALL SHIPS ARE REQUESTED TO GIVE A WIDE BERTH OF AT LEAST 5 CABLES WHEN PASSING THE AREA.

TT908

DANGER TO NAVIGATION

2 TUGBOATS ARE REPORTED SUNK AT 01°19.63'N 104°19.28'E

TT931

VESSELS NAVIGATING IN THE SINGAPORE STRAIT ARE REQUESTED NOT TO DIRECT THEIR HIGH INTENSITY SEARCHLIGHTS SKYWARD IN THE VICINITY OF CHANGI AIRPORT TO AVOID DISRUPTION TO AIR NAVIGATION.

TT961

VESSELS INTENDING TO CROSS THE TRAFFIC SEPERATION SCHEME(TSS) OR PRECAUTIONARY AREAS IN THE SINGAPORE STRAIT DURING THE HOURS OF DARKNESS ARE RECOMMENDED TO DISPLAY THE NIGHT SIGNALS CONSISTING OF 3 ALL-ROUND GREEN LIGHTS IN A VERTICAL LINE WITH EFFECT FROM 1ST JULY 2011 AT 0000HRS UTC (0800HRS SINGAPORE LOCAL TIME) AS DETAILED IN MARITIME AND PORT AUTHORITY OF SINGAPORE'S PORT MARINE CIRCULAR, 02 OF 2011 DATED 30 MAY 2011.

TT981

THREE CONTAINERS ARE REPORTED OVERBOARD AT APPROXIMATE POSITION 01°29.15N 104°29.37E. VESSELS IN THE VICINITY ARE ADVISED TO KEEP A SHARP LOOKOUT AND NAVIGATE WITH CAUTION.

SR154

AN UNIDENTIFIED VESSEL REPORTED SUNK SOUTH WEST OF HORSBURGH AT 01°16.12'N 104°21.50'E.

ISSUED BY SINGAPORE PORT OPERATIONS CONTROL CENTRE (as at 25th September 2011)

V
**REPRINT OF ADMIRALTY NOTICES TO MARINERS
 FOR DUAL BADGED CHARTS**

These notices can be accessed directly from UKHO Website:

<http://www.ukho.gov.uk/ProductsandServices/MaritimeSafety/Pages/NMPublic.aspx>

3954* SINGAPORE – P. Takong Kecil Southwards and Changi Naval Base Eastwards – light-beacons. Radar beacon. Beacon. Depths.

Light List Vol.F, 2010/11, 1694.2

ALRS Vol. 2, 2010/11: 86270

Source: Maritime and Port Authority of Singapore

Chart 4039 [*previous update New Edition 11/08/2011*] WGS84 DATUM




Insert	 Q(6)+LFl.15s8m9M Takong radar beacon, Racon (TK), at light-beacon	(a)	1° 05'·90N., 103° 43'·20E. (a) above
Substitute	 (collapsed) for  Q(6)+LFl.15s8m9M Takong (collapsed)		1° 05'·90N., 103° 43'·24E.

Chart 4042 [*previous update New Edition 17/02/2011*] WGS84 DATUM

Insert	the accompanying block, showing amendments to depths, centred on:		1° 18'·89N., 104° 03'·17E.
	depth 20 ₉	(a)	1° 18'·37N., 104° 06'·01E.
Delete	depth 22 ₂ , close NW of:		(a) above
	depth 21		1° 18'·31N., 104° 06'·12E.

Chart 4043 [*previous update New Edition 28/07/2011*] WGS84 DATUM

Substitute	depth 15 ₆ for depth 16 ₁		1° 19'·79N., 104° 03'·49E.
	depth 17 ₄ for depth 18		1° 19'·75N., 104° 03'·72E.

4215* SINGAPORE STRAIT – Indonesia – P. Nipa North-westwards – Light-beacon

Light List Vol.F, 2010/11, 1692

Source: Indonesian Notice 29/252/11

Chart 4039 [*previous update 3954/11*] WGS84 DATUM

Amend	range of light-beacon to, 7M		1° 09'·17N., 103° 39'·37E.
-------	------------------------------	--	----------------------------

Chart 4040 [*previous update New Edition 11/08/2011*] WGS84 DATUM

Amend	range of light-beacon to, 7M		1° 09'·17N., 103° 39'·37E.
-------	------------------------------	--	----------------------------

4304* SINGAPORE – Jurong Island – Selat Pandan Northwards and Temasek Fairway – Works. Buoyage. Radio reporting point. Depths.

Source: Maritime and Port Authority of Singapore

Note: This update has been included in a New Edition of Chart 4034 published 29 September 2011.

Chart 4032 [*previous update 3810/11*] WGS84 DATUM

Insert	the accompanying block, showing new works and buoyage, centred on:		1° 15'·880N., 103° 43'·600E.
--------	--------------------------------------------------------------------	--	------------------------------

V
**REPRINT OF ADMIRALTY NOTICES TO MARINERS
 FOR DUAL BADGED CHARTS**

4304* SINGAPORE – Jurong Island – Selat Pandan Northwards and Temasek Fairway – Works. Buoyage. Radio reporting point. Depths. Contd.

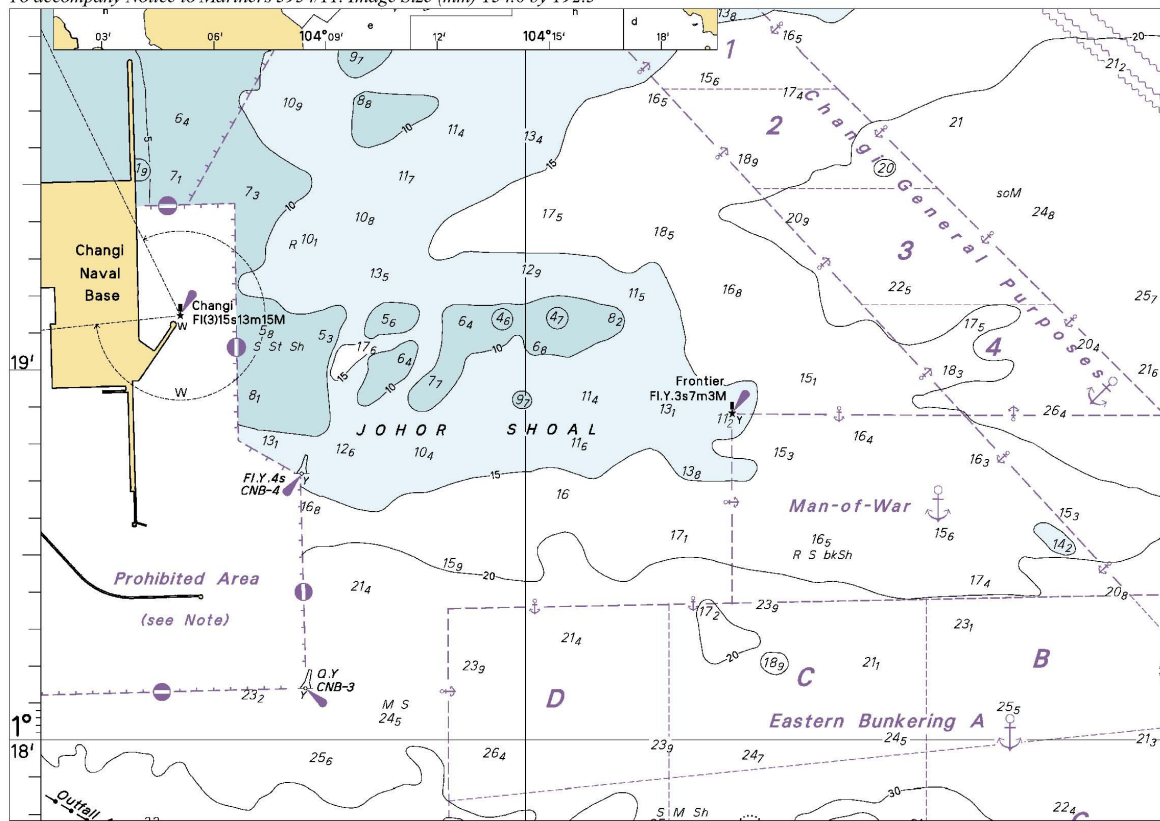
Chart 4040 [previous update 4215/11] WGS84 DATUM

- | | | |
|--------|-----------------------------------------------------------------------------------------------------------------------|------------------------------------------------------------------|
| Insert | the accompanying block, showing new works and buoyage and reporting point, centred on:
depth 15₆ | 1° 15'·80N., 103° 43'·75E.

(a) 1° 15'·59N., 103° 38'·75E. |
| Delete | depth 14₈ enclosed by 15m contour, close E of: | (a) above |

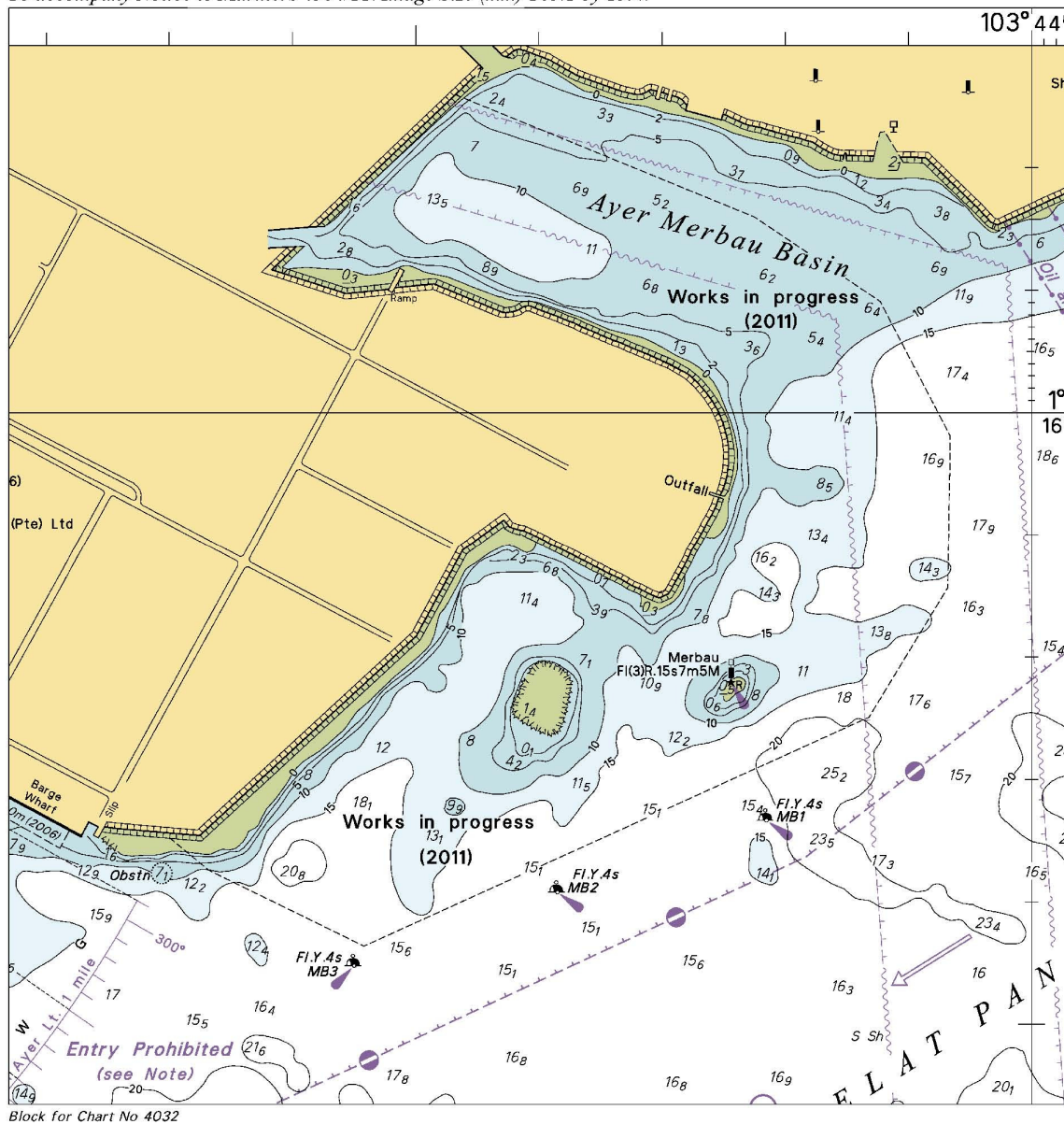
Updated to Admiralty Notices to Mariners Edition No. 39 of 2011 dated 29th September 2011.

To accompany Notice to Mariners 3954/11. Image Size (mm) 134.6 by 192.5



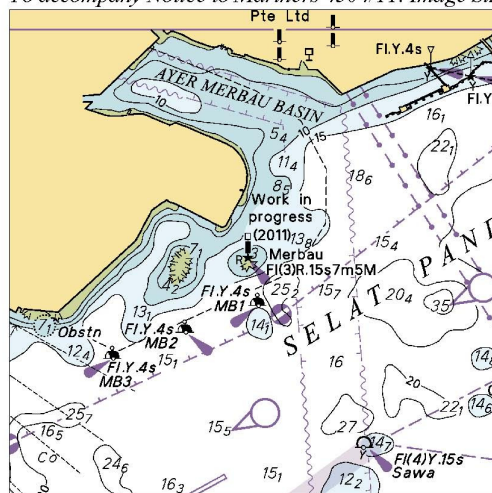
V
REPRINT OF ADMIRALTY NOTICES TO MARINERS
FOR DUAL BADGED CHARTS

To accompany Notice to Mariners 4304/11. Image Size (mm) 165.1 by 159.7



V
REPRINT OF ADMIRALTY NOTICES TO MARINERS
FOR DUAL BADGED CHARTS

To accompany Notice to Mariners 4304/11. Image Size (mm) 68.4 by 68.8



Block for Chart No 4040

SINGAPORE ELECTRONIC NAVIGATIONAL CHART (ENC) DISTRIBUTORS

Please approach any of the appointed distributors to purchase the Singapore ENC.

DISTRIBUTOR	ADDRESS	TELEPHONE/FAX NO./EMAIL/WEBSITE
DPM (Singapore) Pte Ltd	1 Maritime Square, #09-72 HarbourFront Centre, Singapore 099253	Tel. No.: +65 6270 4060 Fax No.: +65 6276 3858 Email: sales@dpsmsingapore.com.sg Website: http://www.dpsmsingapore.com.sg
MARIS Information Systems (MARIS)	52 Telok Blangah Road #01-06 Telok Blangah House Singapore 058809	Tel. No.: +65 6276 1472 Fax No.: +65 6276 1473 Email: support@maris.sg Website: http://www.maris.no
Maritime Information Systems AS (MARIS)	Danholmen 25, 3128 Notteroy, Norway	Tel. No.: +47 33 30 42 50 Fax No.: +47 33 30 42 51 Email: sales@maris.no Website: http://www.maris.no
Motion Smith	15 Jalan Kilang Barat #08-01/05 Frontech Centre Singapore 159357	Tel. No.: +65 6220 5098 Fax No.: +65 6225 4902 Email: sales@motsmith.com Website: http://www.motsmith.com
Transas Marine Pacific Pte Ltd	Cyber Centre 16 & 18 Jalan Kilang Barat Singapore 159358	Tel. No.: +65 6271 0200 Fax No.: +65 6271 7300 Email: dominic@transas.com.sg Website: http://www.transas.com.sg
Vector Services Pte Ltd	15 West Coast Highway, #02-14A Pasir Panjang Building Singapore 117861	Tel. No.: +65 6777 3602 Fax No.: +65 6777 9203 Email: kwchoy@pacific.net.sg
ChartWorld GmbH	Ruhrstrasse 90, D-22761 Hamburg, Germany	Tel. No.: +49 40 853 58 6942 Fax No.: +49 40 853 58 6949 Email: sales@chartworld.com Website : http://www.chartworld.com
Japan Hydrographic Association Electronic Charts Division	Daiichi Sogo Bldg, 6F 1-6-6, Hanedakuko, Ota-ku, Tokyo 144-0041, Japan	Tel. No.: +81 3 5708 7093 Fax No.: +81 3 5708 7094 Email: shimizu-6kj@jha.jp Website: http://www.jha.or.jp/en/jha/
Jeppesen Norway A/S	P.O Box 212 , N-4371 Egersund, Norway	Tel No.: +47 514 64 700 Fax No: +47 514 64 701 Email: license.marine@jeppesen.com Website : http://www.jeppesen.com
PRIMAR STAVANGER	Lervigsveien 36, P.O Box 60, N-4001 Stavanger, Norway	Tel. No.: +47 51 93 9500 Fax No.: +47 51 93 9501 Email: sales@ecc.no Website : http://www.primar.no
United Kingdom Hydrographic Office	Admiralty Way, Taunton, Somerset TA1 2DN United Kingdom	Tel. No.: +44 1823 337900 Fax No.: +44 1823 284077 Email: ENC.SalesReports@ukho.gov.uk Website: http://www.ukho.gov.uk

**Chart Agents for the Maritime and Port Authority of Singapore
Nautical Charts and Publications**

Please approach any of the appointed chart agent to purchase the Singapore Nautical Charts and Publications.

CHART AGENT	ADDRESS	TELEPHONE/FAX NO./EMAIL/WEBSITE
DPM (Singapore) Pte Ltd	1 Maritime Square, #09-72 HarbourFront Centre, Singapore 099253	Tel. No.: +65 6270 4060 Fax No.: +65 6276 3858 Email: sales@dpsmsingapore.com.sg Website: http://www.dpsmsingapore.com.sg
E.W. Liner Charts & Publications Pte Ltd	102F, Pasir Panjang Road, #08-01, Citilink Warehouse Complex, Singapore 118530	Tel. No.: +65 6323 0773 Fax No.: +65 6323 0775 Email: ewliner@singnet.com.sg Website: http://www.ewliner.com
Motion Smith	15 Jalan Kilang Barat #08-01/05 Frontech Centre Singapore 159357	Tel. No.: +65 6220 5098 (After office hours: +65 8163 9993) Fax No.: +65 6225 4902 Email: sales@motsmith.com Website: http://www.motsmith.com

HYDROGRAPHIC NOTE - Instructions

1. Mariners are requested to notify the Chief Hydrographer, Maritime and Port Authority of Singapore, when new or suspected dangers to navigation are discovered, changes are observed in aids to navigation or where corrections to nautical publications may be necessary. Reports, which cannot be confirmed or are lacking in certain details should not be withheld.
2. Any ambiguities of time, positioning and depth should be stressed and any firm expectation of being able to check the information provided on a following voyage should be mentioned.
3. Mariners using satellite position fixing systems, eg. GPS, should provide details of equipment and datum used (where applicable). Where bearings (true or magnetic) are taken visually or by radar to fix a position, it should include more than two objects in order to provide a check on its accuracy. A position may also be defined by bearing and distance from a conspicuous object eg. beacon, lighthouse etc.
4. The note should include a tracing or a digital image of the chart used and the details should be clearly marked.
5. Echo sounders frequently register greater depths than the advertised maximum depth for the equipment, eg. a trace appearing at 50 metres may be in fact be 550 metres or even 1050 metres for equipment whose maximum depth is 500 metres. Erroneous depths caused by 2nd transmission error can usually be recognised by the following:
 - (a) the tracing being weaker than normal for the depth registered,
 - (b) the trace appearing to pass through the transmission line,
 - (c) the feathery nature of the trace.
6. Upon receipt of a hydrographic note, a Notice to Mariners may be issued. The sender's vessel or name is quoted as the source unless the same information is also received in foreign Notices to Mariners.
7. Reports of shoals, uncharted dangers and defects in aids to navigation may also be made to the appropriate Singapore Port Operations Control Centre on VHF Channels 10, 12, 14, 68 or 73.

HYDROGRAPHIC NOTE

To:

Chief Hydrographer
Maritime and Port Authority of Singapore
460 Alexandra Road PSA Building #20-00
Singapore 119963

Tel : (65) 6375 1227
Fax : (65) 6278 7646
Email : hydrographic@mpa.gov.sg

Sender's Contact Details :

Date :

Name of Vessel :

Address of Sender :

Tel : Fax :

Email :

Nature of Observation :

General Location :

Subject :

Position : Lat. Long.

Charts Used :

Date & Time of Observation :

Details :

.....

.....

Attachment :

Equipment Used :

Type of Position Fixing : GPS / DGPS Others :

Type of Echo Sounder :

Name and Signature :

Ship's/Company's Stamp :