



SINGAPOREAN NOTICES TO MARINERS

SECTION	CONTENT	Page
I	Index of Charts & Publications	1
II	New Publications	6
	Notices to Mariners and Chart Corrections	10
	Temporary and Preliminary Notices	11
III	Navigational Information	12
	Amendments to Publications	14
IV	Reprint of Radio Navigational Warnings	15
V	Extract of Admiralty Notices to Mariners for Dual Badged Charts	16

The monthly Notices to Mariners contain corrective information affecting charts published by the Hydrographic Department, Maritime and Port Authority of Singapore. The information contained in these Notices should be updated on the charts affected. Notices under Section II apply only to the particular Singaporean Chart(s) indicated.

Mariners are requested to notify the Chief Hydrographer, Maritime and Port Authority of Singapore, immediately on the discovery of new dangers or suspected dangers to navigation and of changes or defects in aids to navigation. See Hydrographic Note on back page.

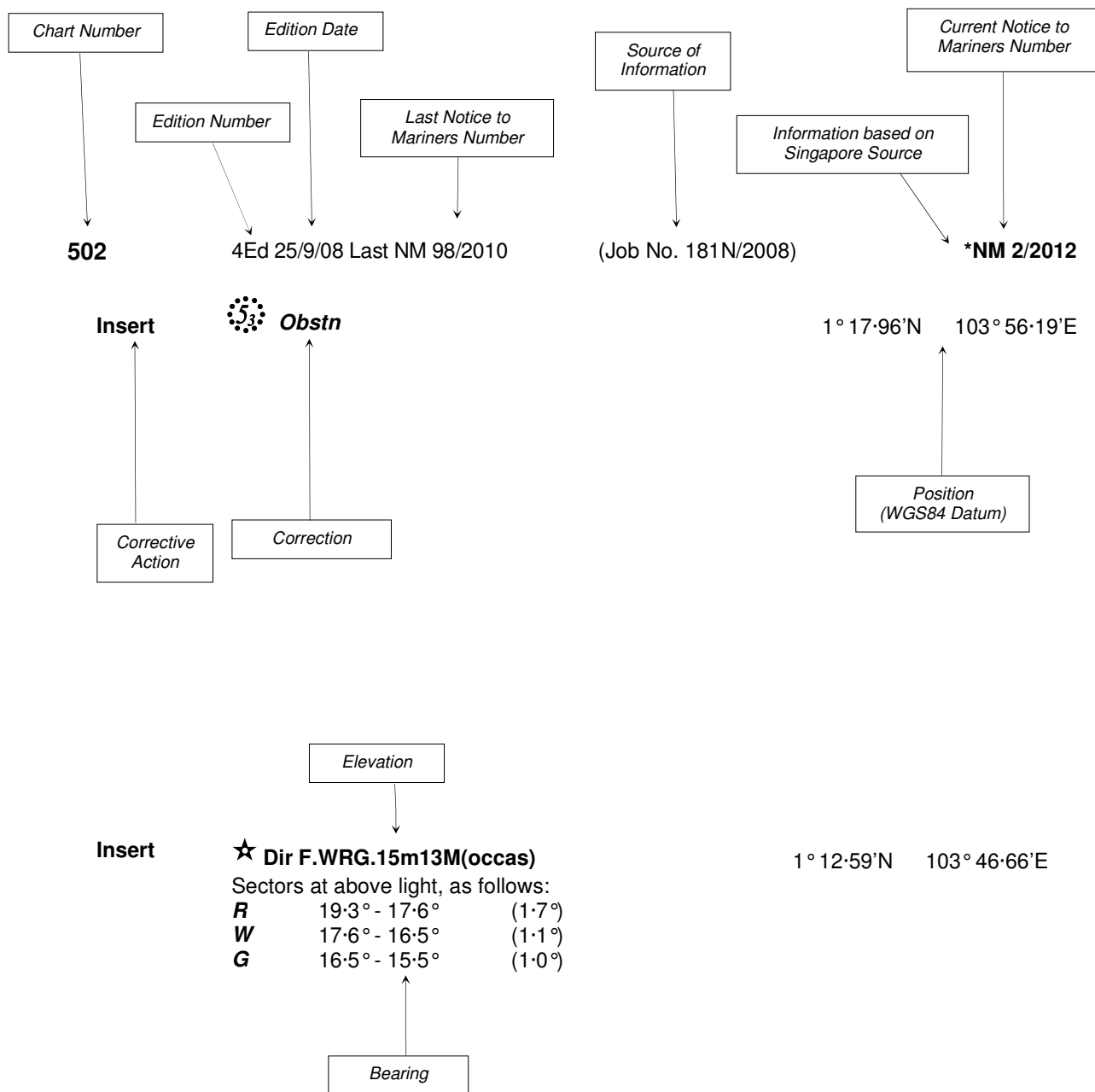
The monthly Singaporean Notices to Mariners can be accessed directly from the MPA website:
[http://www.mpa.gov.sg/sites/port_and_shipping/circulars_and_notices/singapore_notices_to_mariners\(ntm\).page](http://www.mpa.gov.sg/sites/port_and_shipping/circulars_and_notices/singapore_notices_to_mariners(ntm).page)

This service is offered free of charge.

Hydrographic Department
Maritime and Port Authority of Singapore
460 Alexandra Road
PSA Building #20-00
Singapore 119963
Tel: (65) 6375 1227
Fax: (65) 6278 7646

EXPLANATION OF FORMAT

The elements of a typical chart correction are explained below.



Notes:

- a) Notice to Mariners number followed by:
T indicates a Temporary Notice (eg. ***NM 3T/2012**).
P indicates a Preliminary Notice (eg. ***NM 4P/2012**).
- b) Bearings are true reckoned clockwise from 000° to 359°; those relating to lights are from seaward.
- c) Heights and elevations are above Mean High Water Springs.

I
INDEX OF CHARTS AND PUBLICATIONS

INDEX OF AFFECTED CHARTS

DESCRIPTION	NOTICE NO.	PAGE NO.
Index of Singaporean Charts	-	3
Index of Dual Badged Charts	-	4
Index of Singapore Electronic Navigational Chart (ENC)	-	5
New Edition Dual Badged Charts	-	6
Singapore Tide Tables 2013	-	7 to 9
Singaporean Chart GSP1, SP1	*80, *81, *82	10
Singaporean Chart 500	*80	10
Singaporean Chart 501	*80	10
Temporary and Preliminary Notices	*83T	11
Singapore Port Marine Notices	*84	12
Malaysia Port Circulars	85	12
Singaporean Print-On-Demand (POD) Charts	*86	12, 13
Amendments to Publications	*87	14
Reprint of Radio Navigational Warnings	-	15
Extract of Admiralty Notices to Mariners for Dual Badged Charts	-	16
Singapore Electronic Navigational Chart (ENC) Distributors	-	17
Chart Agents for the Maritime and Port Authority of Singapore Nautical Charts and Publications	-	18

*Denotes information are based on Singaporean source.

I
INDEX OF CHARTS AND PUBLICATIONS

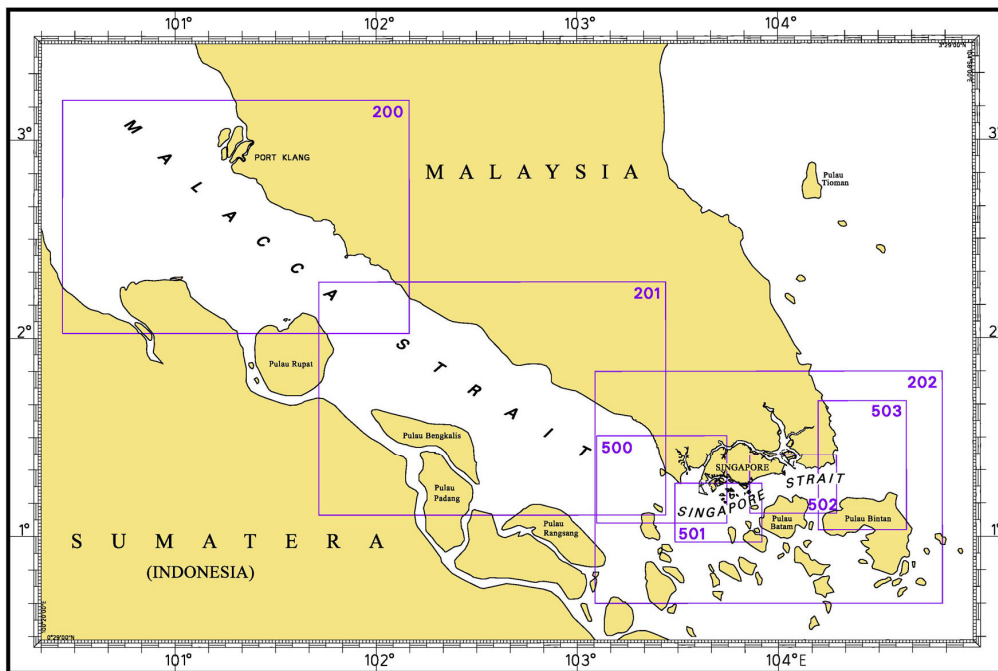
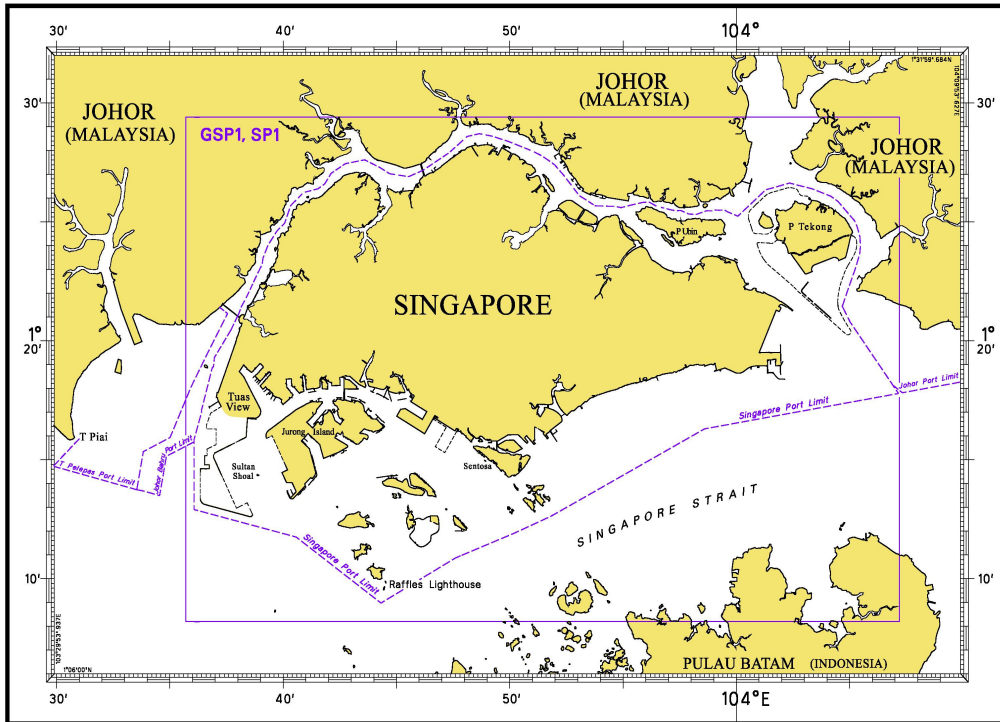
INDEX OF NOTICES

NOTICE NO.	DESCRIPTION	PAGE NO.
-	Index of Singaporean Charts	3
-	Index of Dual Badged Charts	4
-	Index of Singapore Electronic Navigational Chart (ENC)	5
-	New Edition Dual Badged Charts	6
-	Singapore Tide Tables 2013	7 to 9
*80, *81, *82	Singaporean Chart GSP1, SP1	10
*80	Singaporean Chart 500	10
*80	Singaporean Chart 501	10
*83T	Temporary and Preliminary Notices	11
*84	Singapore Port Marine Notices	12
85	Malaysia Port Circulars	12
*86	Singaporean Print-On-Demand (POD) Charts	12, 13
*87	Amendments to Publications	14
-	Reprint of Radio Navigational Warnings	15
-	Extract of Admiralty Notices to Mariners for Dual Badged Charts	16
-	Singapore Electronic Navigational Chart Distributors	17
-	Chart Agents for the Maritime and Port Authority of Singapore Nautical Charts and Publications	18

* Denotes information are based on Singaporean source.

I INDEX OF CHARTS AND PUBLICATIONS

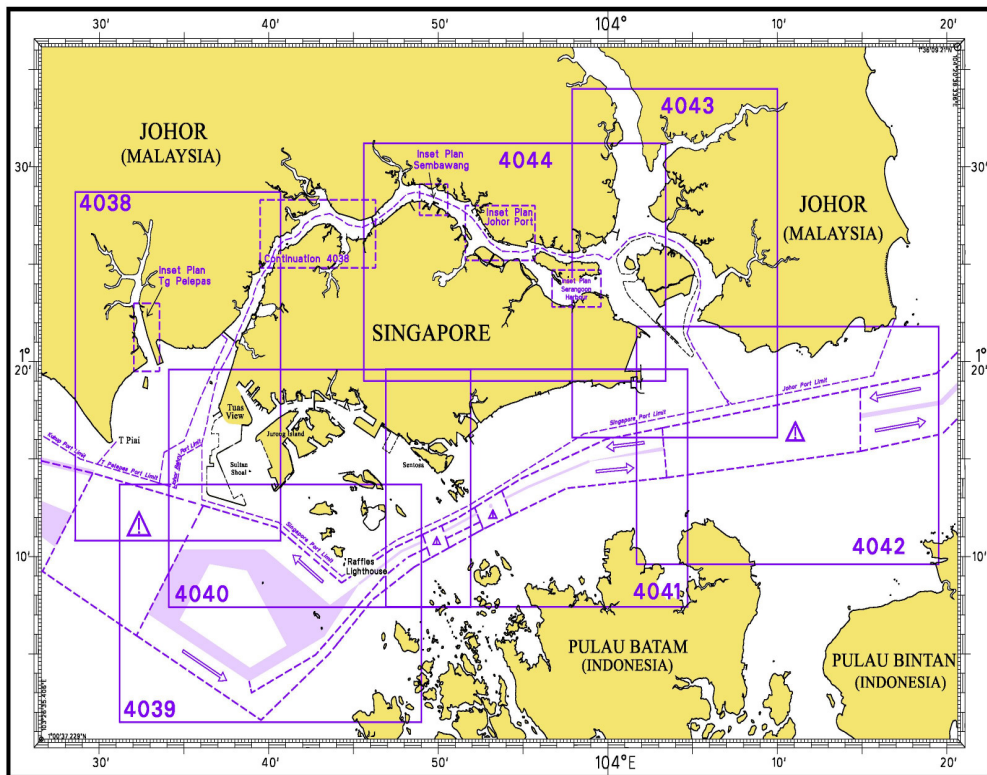
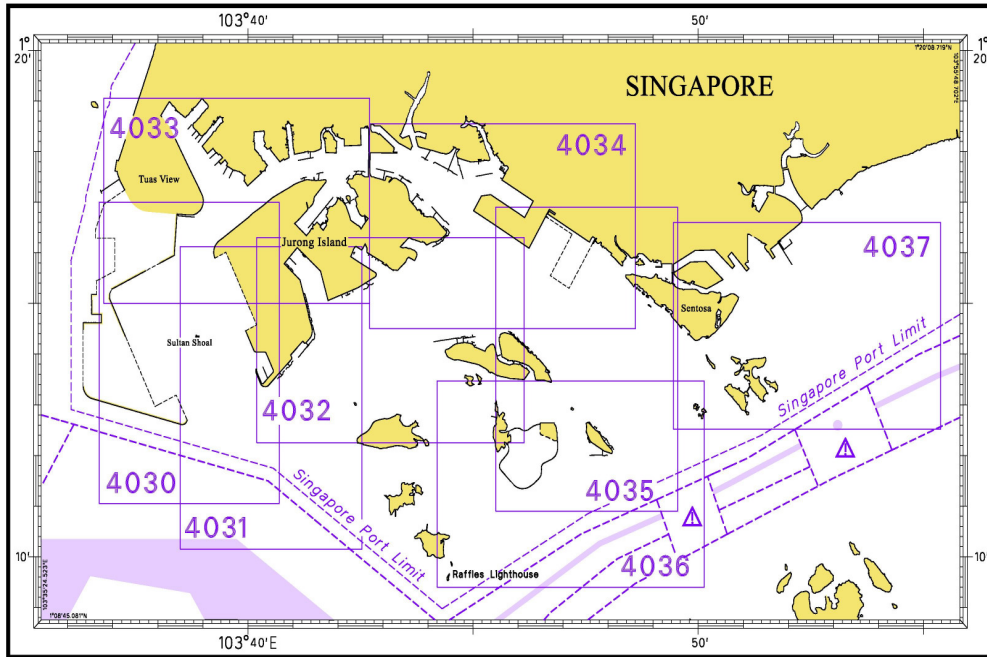
INDEX OF SINGAPOREAN CHARTS



Notes:
 Updated SINGAPOREAN Charts are available through our Print-On-Demand (POD) Chart Service. For more information, refer to Section III – Navigational Information. These charts can be purchased from our authorised Chart Agents.

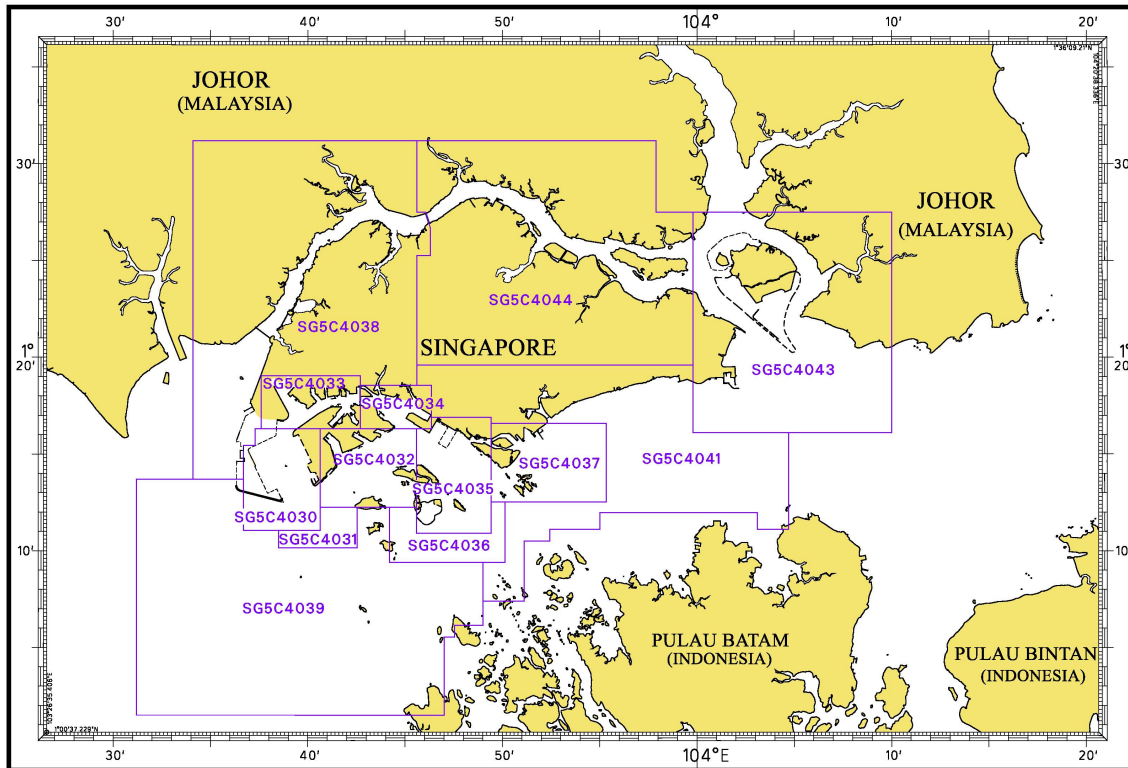
I
INDEX OF CHARTS AND PUBLICATIONS

INDEX OF DUAL BADGED CHARTS



I INDEX OF CHARTS AND PUBLICATIONS

INDEX OF SINGAPORE ELECTRONIC NAVIGATIONAL CHART (ENC)



COVERAGE OF SINGAPORE ELECTRONIC NAVIGATIONAL CHART (ENC)

ENC Name	ENC Coverage	ENC Edition
SG5C4030	West Jurong Anchorages and Temasek Fairway	5 th Edition (3/05/2012)
SG5C4031	Western Approaches to Jurong Island	5 th Edition (3/05/2012)
SG5C4032	Sinki Fairway	7 th Edition (3/05/2012)
SG5C4033	Tuas Bay, West Jurong Channel and Pesek Basin	5 th Edition (3/05/2012)
SG5C4034	East Jurong Channel, Pasir Panjang Terminal and West Keppel Fairway	10 th Edition (3/05/2012)
SG5C4035	Western Anchorages, Jong Fairway and Cruise Bay	12 th Edition (27/09/2012)
SG5C4036	Raffles Lighthouse to The Sisters	6 th Edition (3/05/2012)
SG5C4037	Keppel Harbour, Tanjong Pagar Terminal and Approaches	6 th Edition (3/05/2012)
SG5C4038	Johor Strait – Western Part	5 th Edition (3/05/2012)
SG5C4039	Western Approaches to Main Strait	5 th Edition (3/05/2012)
SG5C4041	Pulau Sebarok to Changi	6 th Edition (3/05/2012)
SG5C4043	Kuala Johor and Sungai Johor	8 th Edition (16/08/2012)
SG5C4044	Johor Strait – Eastern Part	8 th Edition (16/08/2012)

II NEW PUBLICATIONS

NEW EDITION DUAL BADGED CHART PUBLISHED ON 27TH SEPTEMBER 2012

Chart Number : 4035
Title : Port of Singapore – Western Anchorages, Jong Fairway and Cruise Bay
Coverage : Lat 01°10·90'N 01°16·90'N
Long 103°45·50'E 103°49·54'E
Scale : 1: 10 000
Date Published : 27th September 2012
Size of Chart : 749.4 x 1105.7 mm
Remarks : This new edition includes updated surveys covering these areas :

- Shell SBM Area
- Area west of Pulau Sebarok
- Area around Pulau Bukom
- Area south of the Spoil Ground
- Jong Fairway
- East Jurong Channel

The existing chart of the same number published on 29th September 2011 is superseded.

II NEW PUBLICATIONS

SINGAPORE TIDE TABLES YEAR 2013 PUBLISHED ON 1ST SEPTEMBER 2012

Summary of Publication

This 251-page book contains Tidal Height and Tidal Stream Predictions covering stations in Singapore port waters and along the Malacca and Singapore Straits.

This publication consists of 5 segments.

1. **High and Low Water Predictions** at the following stations:
 - a) Tanjong Pagar
 - b) Sembawang

2. **Hourly Tidal Height Predictions** at the following stations:
 - a) Tuas
 - b) Raffles Lighthouse
 - c) West Coast
 - d) Bukom
 - e) Tanjong Pagar
 - f) Tanah Merah
 - g) Tanjong Changi
 - h) Sembawang
 - i) Singapore Strait - Horsburgh Lighthouse

3. **Hourly Tidal Stream Predictions** at the following stations:
 - a) Main Strait – off Tuas View
 - b) Jong Fairway – Sisters Buoy
 - c) Main Strait – off Gusong Boarding Ground (formerly Gusong Beacon)
 - d) Sentosa
 - e) East Buran
 - f) Main Strait – Eastern Petroleum A
 - g) Kuala Johor – off Malang Tiga

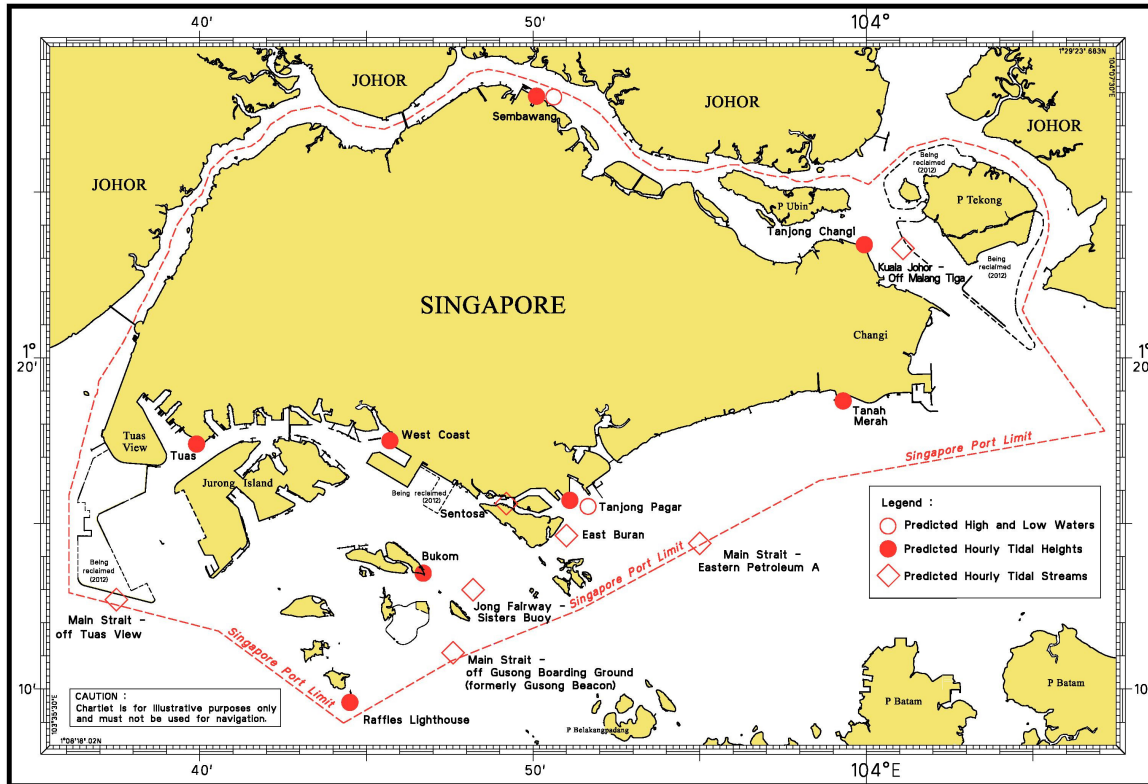
4. **Maximum and Slack Tidal Stream Predictions** at the following stations:
 - a) Malacca Strait – Off The Brothers Light
 - b) Singapore Strait – Selat Phillip
 - c) Singapore Strait – Karang Banteng (Buffalo Rock)
 - d) Singapore Strait - Horsburgh Lighthouse

5. **Malacca Strait – High and Low Water Predictions** at the following stations:
 - a) Kedah Pier, Pulau Pinang
 - b) Port Dickson
 - c) Kuala Batu Pahat

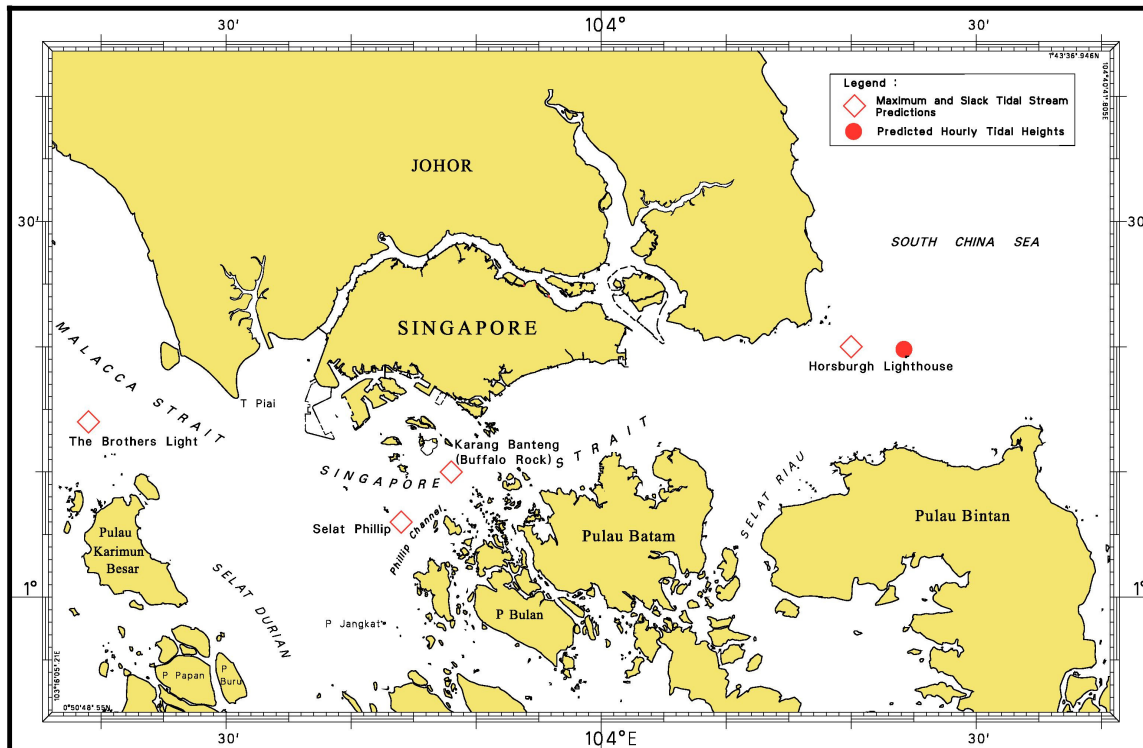
The locations of the above stations are shown in the chartlets below:

II NEW PUBLICATIONS

Tidal Prediction Stations within Singapore port waters



Tidal Prediction Stations in Malacca and Singapore Straits



II NEW PUBLICATIONS

Tidal Prediction Stations in Malacca Strait







This publication is available from the following Chart Agents:

1. DPM (Singapore) Pte Ltd
2. E.W. Limer Charts & Publications Pte Ltd
3. Motion Smith

(Please refer Page 18 for details)

II
NOTICES TO MARINERS AND CHART CORRECTIONS

GSP1/SP1	7 Ed 3/05/12 Last NM 73/2012	(Port Marine Notice No. 129/2012)	*NM 80/2012
Insert	dashed line joining		1°14·41'N 103°39·97'E 1°14·32'N 103°39·78'E
Delete	dashed line joining		1°14·32'N 103°39·78'E 1°14·01'N 103°39·93'E 1°13·96'N 103°40·13'E 1°13·96'N 103°40·31'E 1°13·80'N 103°40·38'E 1°13·85'N 103°40·48'E
		(HD/Job No. 40N/2012)	*NM 81/2012
Insert	 <i>Wk</i>		1°14·97'N 103°38·94'E
		(HD/HE025/105/2012)	*NM 82/2012
Substitute	 FI(2)10s11m5M Banyan with symbol Racon, legend ' AIS ' and radar reflector for 		1°13·35'N 103°41·58'E
		(HD/HE025/106/2012)	
Delete	 <i>Fl. Y. 5s Banyan</i>		1°13·33'N 103°41·59'E
<hr/>			
500	6 Ed 7/10/10 Last NM 35/2012	(Port Marine Notice No. 129/2012)	*NM 80/2012
Insert	dashed line joining		1°14·41'N 103°39·97'E 1°14·32'N 103°39·78'E
Delete	dashed line joining		1°14·32'N 103°39·78'E 1°14·01'N 103°39·93'E 1°13·96'N 103°40·13'E 1°13·96'N 103°40·31'E 1°13·80'N 103°40·38'E 1°13·85'N 103°40·48'E
<hr/>			
501	6 Ed 3/05/12	(Port Marine Notice No. 129/2012)	*NM 80/2012
Insert	dashed line joining		1°14·41'N 103°39·97'E 1°14·32'N 103°39·78'E
Delete	dashed line joining		1°14·32'N 103°39·78'E 1°14·01'N 103°39·93'E 1°13·96'N 103°40·13'E 1°13·96'N 103°40·31'E 1°13·80'N 103°40·38'E 1°13·85'N 103°40·48'E

II
TEMPORARY AND PRELIMINARY NOTICES

***(NM 83T/2012) New positions of Helios 2 and Helios 3 Buoys**

Purpose : To make way for the construction of secondary SLNG Terminal at Jurong Island.

Date of work : With effect from 30th September 2012 to 29th March 2013.
(The working period has been extended)

Operating hours : Daily, including Sundays and Public Holidays .

1. The new position co-ordinates of buoys Helios 2 and Helios 3 are as follows :

Position	(Co-ordinates: WGS84)	
	Latitude (N)	Longitude (E)
Helios 2	1° 13·91'	103° 40·37'
Helios 3	1° 13·72'	103° 40·51'

2. **Charts affected :** 4030, 4031, 4038, 4039 and 4040.

3. **Caution :** Mariners are advised to navigate with caution.

Source : HD/HE025/58 & 59/2012.
Port Marine Notice No. 130/2012.

III NAVIGATIONAL INFORMATION

***(NM 84/2012) SINGAPORE PORT MARINE NOTICES**

The following Port Marine Notices have been shortlisted, as they would be of particular interest to mariners.

These notices can be accessed directly from MPA website:

http://www.mpa.gov.sg/sites/port_and_shipping/circulars_and_notices/port_marine_notices.page

PMN No.	Subject
125/2012	Dredging works off Pulau Bukom.
126/2012	Soil investigation works off Tuas View.
127/2012	Soil investigation works off Temasek Fairway, Jurong Island.
128/2012	Dredging works at Mencast foreshore off Sungei Jurong.
129/2012	Reclamation of Jurong Island Phase 4 and construction of jetty off Temasek Fairway.
130/2012	Construction of secondary SLNG Terminal at Jurong Island.
131/2012	Soil investigation works off Temasek Fairway, Jurong Island.

(NM 85/2012) MALAYSIA PORT CIRCULARS

The following Port Circulars have been shortlisted, as they would be of particular interest to mariners.

These notices can be accessed directly from Malaysia website:

<http://www.marine.gov.my>

PC No.	Subject
25/2012	Installation of silt curtains in the waters of Town Reach in the West Johor Strait - Working duration extended with additional working vessels.

***(NM 86/2012) SINGAPOREAN PRINT-ON-DEMAND (POD) CHARTS**

Print-On-Demand (POD) Charts are the most up-to-date paper nautical charts printed for navigational use. These nautical charts are produced in accordance with the International Hydrographic Organisation (IHO) chart specifications. These official nautical charts are continually updated to the latest Notices to Mariners before they are printed and sold to users.

These POD Charts include GSP1, SP1, 200, 201, 202, 500, 501, 502 and 503.

BENEFITS TO OUR CUSTOMERS

Convenience

Customers need not make numerous hand corrections to the nautical charts before use. In addition the updated POD Charts are more accurate and reliable than offset printed charts with hand corrections.

III
NAVIGATIONAL INFORMATION

Clarity

Clarity in the presentation of updated information as compared to lithographic printed charts, where in some cases there are several overlapping corrections over existing information.

Coverage

The POD Charts cover the Malacca and Singapore Straits, from One Fathom Bank to Horsburgh Lighthouse.

III AMENDMENTS TO PUBLICATIONS

***(NM 87/2012) UPDATING OF PUBLICATION "SINGAPORE PORT INFORMATION 2012/2013"**

1. Page 81

**PORT HEALTH CLEARANCE PROCEDURES FOR VESSELS ARRIVING SINGAPORE
OUTWARD HEALTH CLEARANCE**

Amend the following:

- 10 For further information on Port Health matters, Masters, owners and agents may contact the Port Health Office through **VHF Channel 74** or at:

Source: HD/BD67/14/2012

2. Page 136

CHARACTERISTICS OF AIDS TO NAVIGATION - SINKI FAIRWAY

Insert the following:

Name of Beacon	Position Lat. N Long. E Deg Min	Structure, colour & Shape	Light Characteristic	Owner
Banyan Beacon	01°13.345' 103°41.583'	Double black spheres, on black tubular tower with red horizontal band pivoted at base, with radar reflector and AIS, Buoyant beacon	Fl(2)10s11m5M	MPA

Source: HD/HE025/105/2012

Delete the following:

Name of Beacon/Buoy	Position Lat. N Long. E Deg Min	Structure, colour & Shape	Light Characteristic	Owner
Banyan Beacon	01°13.346' 103°41.584'	Beacon damaged	-	MPA
Banyan Buoy	01°13.325' 103°41.586'	Yellow Pillar	Fl.Y.5s	MPA

Source: HD/HE025/106/2012

3. Page 146

CHARACTERISTICS OF AIDS TO NAVIGATION - SERANGOON HARBOUR

Amend the following:

Name of Buoy	Position Lat. N Long. E Deg Min	Structure, colour & Shape	Light Characteristic	Owner
SOPS-1 Buoy	01°23.148' 103°58.048'	Yellow Pillar	Fl.Y.4s	Singapore Offshore Petroleum Services

Source: Landmark Survey dated 5th April 2012.

IV
REPRINT OF RADIO NAVIGATIONAL WARNINGS

The following Radio Navigational Warnings have been shortlisted, as they would be of particular interest to mariners.

TT022 (AMENDED 060130Z)

A COASTER VESSEL WAS REPORTED SUNK IN POSITION 01°10'80"N 103°34'00"E.
VESSELS ARE TO GIVE A WIDE BERTH AND NAVIGATE WITH CAUTION.

TT058

BUFFALO ROCK ISOLATED DANGER BUOY FL(2)5S AT POSITION 01°09'90"N 103°48'10"E . TOP MARK IS MISSING AND REPORTED UNLIT.

TT059

BATU BERHANTI BUOY FL(2)5S AT POSITION 01°11'76"N 103°52'51"E IN THE SINGAPORE STRAIT REPORTED UNLIT.

TT060

KUDA BUOY FL(Y)4S AT POSITION 01°11.48'N 103°42.22'E IS REPORTED UNLIT.

TT063

RACON DELTA BUOY Q(6)LF15S IN POSITION 01°03'78"N 103°38'77"E IS REPORTED UNLIT.

TT173

VESSELS IN EAST JOHOR STRAIT ARE ADVISED TO NAVIGATE WITH CAUTION WHEN NEAR THE PROJECT AREAS OFF PULAU TEKONG, CHANGI AND MALANG PAPAN AS SHALLOW WATER AREAS EXIST. VESSELS ARE ADVISED TO KEEP LOOKOUT FOR TUGS AND BARGES NAVIGATING NEAR THE PROJECT AREAS AND PASSENGER FERRIES CROSSING BETWEEN CHANGI AND PULAU TEKONG AND VICINITY OF PASIR GUDANG.

TT931

VESSELS NAVIGATING IN THE SINGAPORE STRAIT ARE REQUESTED NOT TO DIRECT THEIR HIGH INTENSITY SEARCHLIGHTS SKYWARD IN THE VICINITY OF CHANGI AIRPORT TO AVOID DISRUPTION TO AIR NAVIGATION.

TT961

VESSELS INTENDING TO CROSS THE TRAFFIC SEPARATION SCHEME(TSS) OR PRECAUTIONARY AREAS IN THE SINGAPORE STRAIT DURING THE HOURS OF DARKNESS ARE RECOMMENDED TO DISPLAY THE NIGHT SIGNALS CONSISTING OF 3 ALL-ROUND GREEN LIGHTS IN A VERTICAL LINE WITH EFFECT FROM 1ST JULY 2011 AT 0000UTC (0800SGT) AS DETAILED IN MARITIME AND PORT AUTHORITY OF SINGAPORE'S PORT MARINE CIRCULAR, 02 OF 2011 DATED 30 MAY 2011.

ISSUED BY SINGAPORE PORT OPERATIONS CONTROL CENTRE (as at 23rd September 2012)

V
**EXTRACT OF ADMIRALTY NOTICES TO MARINERS
 FOR DUAL BADGED CHARTS**

These notices can also be accessed directly from UKHO Website:

<http://www.ukho.gov.uk/ProductsandServices/MaritimeSafety/Pages/NMPublic.aspx>

4043* SINGAPORE – West Jurong Channel – TMUC Terminal Westwards – Light-beacons.

Light List Vol. F, 2011/12, 1685.2, 1685.21

Source: Maritime and Port Authority of Singapore

Chart 4030 [*previous update 2951/12*] WGS84 DATUM

Insert		Fl.Y.6s TPU-N1	1° 16'·646N., 103° 39'·880E.
		Fl.Y.6s TPU-N2	1° 16'·637N., 103° 39'·866E.

Chart 4033 [*previous update 3486/12*] WGS84 DATUM

Insert		Fl.Y.6s TPU-N1	1° 16'·646N., 103° 39'·880E.
		Fl.Y.6s TPU-N2	1° 16'·637N., 103° 39'·866E.

4171* SINGAPORE – West Jurong Channel – Tuas Bay – Obstruction. Berths. Dredged areas. Coastline. Depths

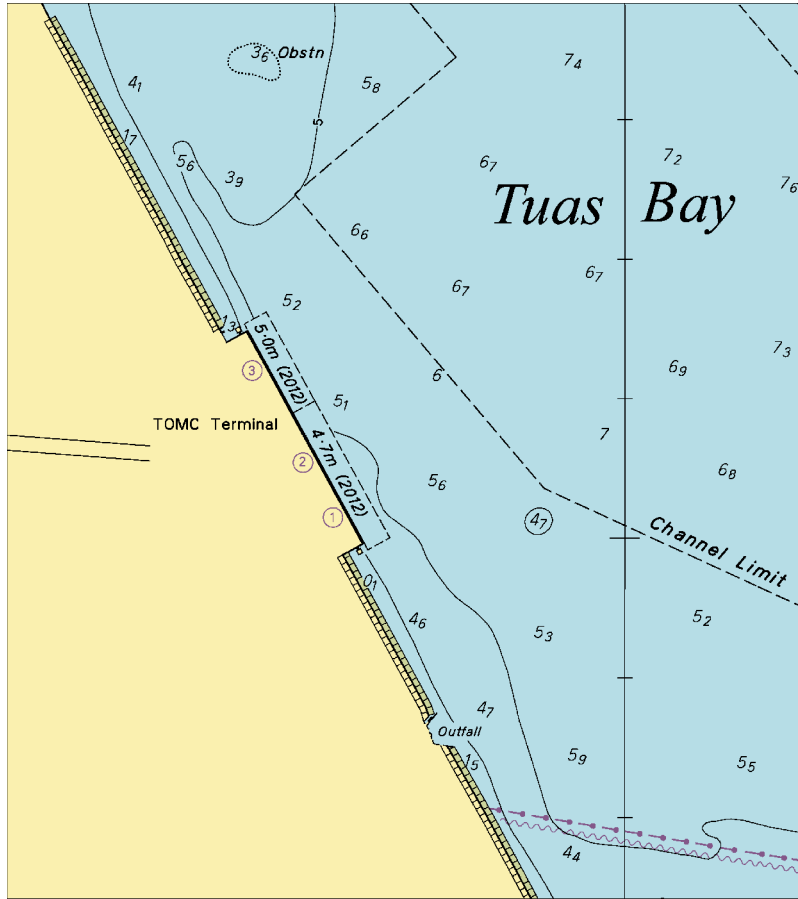
Source: Maritime and Port Authority of Singapore

Chart 4033 [*previous update 4043/12*] WGS84 DATUM

Insert	the accompanying block, showing new obstruction, berths, dredged areas and amendments to coastline and depths, centred on:	1° 17'·570N., 103° 38'·845E.
--------	--	------------------------------

Updated to Admiralty Notices to Mariners Edition No. 39 of 2012 dated 27th September 2012.

To accompany Notice to Mariners 4171/12. Image Size (mm) 118.3 by 105.6



Block for Chart No 4033

MPA ENC DISTRIBUTORS

CONTACT PERSON/ DESIGNATION	ADDRESS	TELEPHONE/FAX NO./EMAIL/WEBSITE
ChartWorld GmbH	Ruhrstrasse 90, 22761 Hamburg, Germany	Tel. No.: +49 40 853 58 6942 Fax No.: +49 40 853 58 6949 Email: sales@chartworld.com
ChartWorld Asia Pacific Pte Ltd.	Frontech Centre 07-01, 15 Jalan Kilang Barat, Singapore 159357	Tel No.: +65 65133500 Website : http://www.chartworld.com
DPM (Singapore) Pte Ltd	1 Maritime Square, #09-72 HarbourFront Centre, Singapore 099253	Tel. No.: +65 6270 4060 Fax No.: +65 6276 3858 Email: sales@dpmsingapore.com.sg Website: http://www.dpmsingapore.com.sg
Maritime Information Systems (MARIS)	52, Telok Blangah Road #01-06, Telok Blangah House, Singapore 058809	Tel. No.: +65 6276 1472 Fax No.: +65 6276 1473 Email: : support@maris.sg Website: http://www.maris.no
Maritime Information Systems AS (MARIS)	Danholmen 25, 3128 Notteroy, Norway	Tel. No.: +47 33 30 42 50 Fax No.: +47 33 30 42 51 Email: : sales@maris.no Website: http://www.maris.no
Motion Smith	15 Jalan Kilang Barat #08-01/05 Frontech Centre, Singapore 159357	Tel. No.: +65 6220 5098 Fax No.: +65 6225 4902 Email: sales@motsmith.com Website: http://www.motsmith.com
Transas Marine Pacific Pte Ltd	Cyber Centre 16 & 18 Jalan Kilang Barat Singapore 159358	Tel. No.: +65 6271 0200 Fax No.: +65 6271 7300 Email: dominic@transas.com.sg Website: http://www.transas.com.sg
Vector Services Pte Ltd	196 Pandan Loop, #06-29 Pantech Business Hub Singapore 128384	Tel. No.: +65 6777 3602 Fax No.: +65 6777 9203 Email: kwchoy@pacific.net.sg
Japan Hydrographic Association Electronic Charts Division	Daiichi Sogo Bldg, 6F 1-6-6, Hanedakuko, Ota-ku Tokyo 144-0041, Japan	Tel. No.: +81 3 5708 7093 Fax No.: +81 3 5708 7094 Email: shimizu-6kj@jha.jp Website: http://www.jha.or.jp/en/jha/
Jeppesen Norway AS	P.O Box 212 , N-4371 Egersund, Norway	Tel No.: +47 51 46 4700 Fax No: +47 51 46 4701 Email: license.marine@jeppesen.com Website : http://www.jeppesen.com/marine
PRIMAR STAVANGER	Lervigsveien 36, P.O Box 60, N-4001 Stavanger, Norway	Tel. No.: +47 51 93 9500 Fax No.: +47 51 93 9501 Email: sales@ecc.no Website : http://www.primar.no
The United Kingdom Hydrographic Office	Admiralty Way, Taunton, Somerset, TA1 2DN United Kingdom	Tel. No.: +44 1823 33 7900 Fax No.: +44 1823 28 4077 Emails: ENC.SalesReports@ukho.gov.uk Website: http://www.ukho.gov.uk

Chart Agents for the Maritime and Port Authority of Singapore
Nautical Charts and Publications

Please approach any of the appointed chart agent to purchase the Singapore Nautical Charts and Publications.

CHART AGENT	ADDRESS	TELEPHONE/FAX NO./EMAIL/WEBSITE
DPM (Singapore) Pte Ltd	1 Maritime Square, #09-72 HarbourFront Centre, Singapore 099253	Tel. No.: +65 6270 4060 Fax No.: +65 6276 3858 Email: sales@dpmsingapore.com.sg Website: http://www.dpmsingapore.com.sg
E.W. Liner Charts & Publications Pte Ltd	102F, Pasir Panjang Road, #08-01, Citilink Warehouse Complex, Singapore 118530	Tel. No.: +65 6323 0773 Fax No.: +65 6323 0775 Email: ewliner@singnet.com.sg Website: http://www.ewliner.com
Motion Smith	15 Jalan Kilang Barat #08-01/05 Frontech Centre Singapore 159357	Tel. No.: +65 6220 5098 (After office hours:+65 8163 9993) Fax No.: +65 6225 4902 Email: sales@motsmith.com Website: http://www.motsmith.com

HYDROGRAPHIC NOTE - Instructions

1. Mariners are requested to notify the Chief Hydrographer, Maritime and Port Authority of Singapore, when new or suspected dangers to navigation are discovered, changes are observed in aids to navigation or where corrections to nautical publications may be necessary. Reports, which cannot be confirmed or are lacking in certain details should not be withheld.
2. Any ambiguities of time, positioning and depth should be stressed and any firm expectation of being able to check the information provided on a following voyage should be mentioned.
3. Mariners using satellite position fixing systems, eg. GPS, should provide details of equipment and datum used (where applicable). Where bearings (true or magnetic) are taken visually or by radar to fix a position, it should include more than two objects in order to provide a check on its accuracy. A position may also be defined by bearing and distance from a conspicuous object eg. beacon, lighthouse etc.
4. The note should include a tracing or a digital image of the chart used and the details should be clearly marked.
5. Echo sounders frequently register greater depths than the advertised maximum depth for the equipment, eg. a trace appearing at 50 metres may be in fact be 550 metres or even 1050 metres for equipment whose maximum depth is 500 metres. Erroneous depths caused by 2nd transmission error can usually be recognised by the following:
 - (a) the tracing being weaker than normal for the depth registered,
 - (b) the trace appearing to pass through the transmission line,
 - (c) the feathery nature of the trace.
6. Upon receipt of a hydrographic note, a Notice to Mariners may be issued. The sender's vessel or name is quoted as the source unless the same information is also received in foreign Notices to Mariners.
7. Reports of shoals, uncharted dangers and defects in aids to navigation may also be made to the appropriate Singapore Port Operations Control Centre on VHF Channels 10, 12, 14, 68 or 73.

HYDROGRAPHIC NOTE

To:

Chief Hydrographer
Maritime and Port Authority of Singapore
460 Alexandra Road PSA Building #20-00
Singapore 119963

Tel : (65) 6375 1227
Fax : (65) 6278 7646
Email : hydrographic@mpa.gov.sg

Sender's Contact Details :

Date :
Name of Vessel :
Address of Sender :
Tel : Fax :
Email :

Nature of Observation :

General Location :
Subject :
Position : Lat. Long.
Charts Used :
Date & Time of Observation :
Details :
.....
.....
Attachment :

Equipment Used :

Type of Position Fixing : GPS / DGPS Others :
Type of Echo Sounder :

Name and Signature :

Ship's/Company's Stamp :