



SINGAPOREAN NOTICES TO MARINERS

SECTION	CONTENT	Page
I	Index of Charts & Publications	1
II	New Publications	6
	Notices to Mariners and Chart Corrections	11
	Temporary and Preliminary Notices	12
III	Navigational Information	13
	Amendments to Publications	14
IV	Reprint of Radio Navigational Warnings	16
V	Extract of Admiralty Notices to Mariners for Dual Badged Charts	17

The monthly Notices to Mariners contain corrective information affecting charts published by the Hydrographic Department, Maritime and Port Authority of Singapore. The information contained in these Notices should be updated on the charts affected. Notices under Section II apply only to the particular Singaporean Chart(s) indicated.

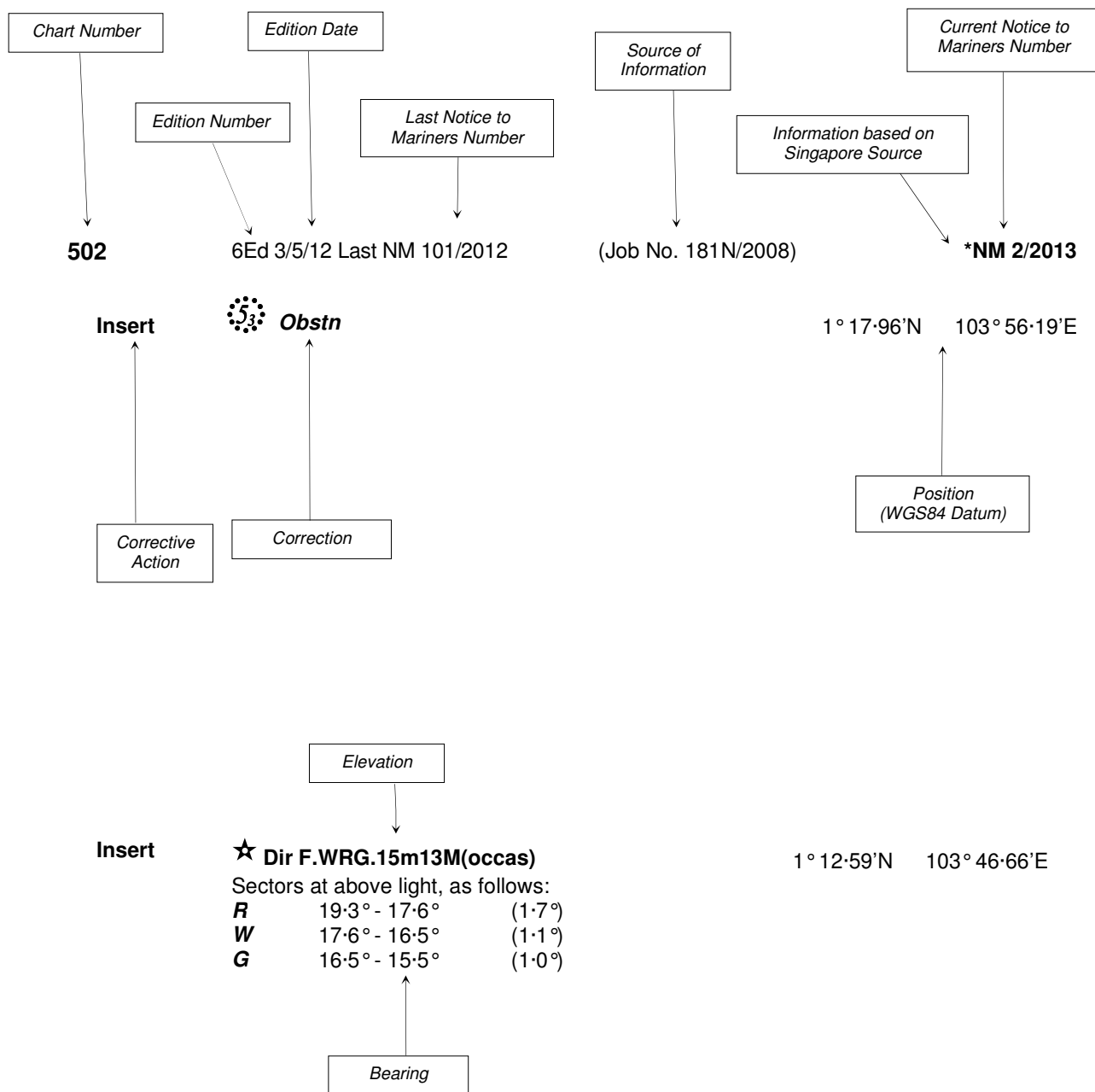
Mariners are requested to notify the Chief Hydrographer, Maritime and Port Authority of Singapore, immediately on the discovery of new dangers or suspected dangers to navigation and of changes or defects in aids to navigation. See Hydrographic Note on back page.

The monthly Singaporean Notices to Mariners can be accessed directly from the MPA website:
[www.mpa.gov.sg/sites/port_and_shipping/circulars_and_notices/singapore_notices_to_mariners\(ntm\).page](http://www.mpa.gov.sg/sites/port_and_shipping/circulars_and_notices/singapore_notices_to_mariners(ntm).page)

Hydrographic Department
Maritime and Port Authority of Singapore
460 Alexandra Road
#20-00 PSA Building
Singapore 119963
Tel: (65) 6375 1227
Fax: (65) 6278 7646

EXPLANATION OF FORMAT

The elements of a typical chart correction are explained below.



Notes:

- a) Notice to Mariners number followed by:
T indicates a Temporary Notice (eg. ***NM 3T/2013**).
P indicates a Preliminary Notice (eg. ***NM 4P/2013**).
- b) Bearings are true reckoned clockwise from 000° to 359°; those relating to lights are from seaward.
- c) Heights and elevations are above Mean High Water Springs.

I
INDEX OF CHARTS AND PUBLICATIONS

INDEX OF AFFECTED CHARTS

DESCRIPTION	NOTICE NO.	PAGE NO.
Index of Singaporean Charts	-	3
Index of Dual Badged Charts	-	4
Index of Singapore Electronic Navigational Chart (ENC)	-	5
New Edition Dual Badged Charts	-	6
New Edition Singaporean Charts	-	7
Singapore Tide Tables Year 2014	-	8 to 10
Singaporean Chart GSP1/SP1	*85, 86	11
Singaporean Chart 501	86	11
Singaporean Chart 502	*85, 86	11
Temporary and Preliminary Notices	*87T	12
Singapore Port Marine Notices	*88	13
Singaporean Print-On-Demand (POD) Charts	*89	13
Amendments to Publications	*90	14, 15
Reprint of Radio Navigational Warnings	-	16
Extract of Admiralty Notices to Mariners for Dual Badged Charts	-	17
Singapore Electronic Navigational Chart (ENC) Distributors	-	18
Chart Agents for the Maritime and Port Authority of Singapore Nautical Charts and Publications	-	19

*Denotes information are based on Singaporean source.

I
INDEX OF CHARTS AND PUBLICATIONS

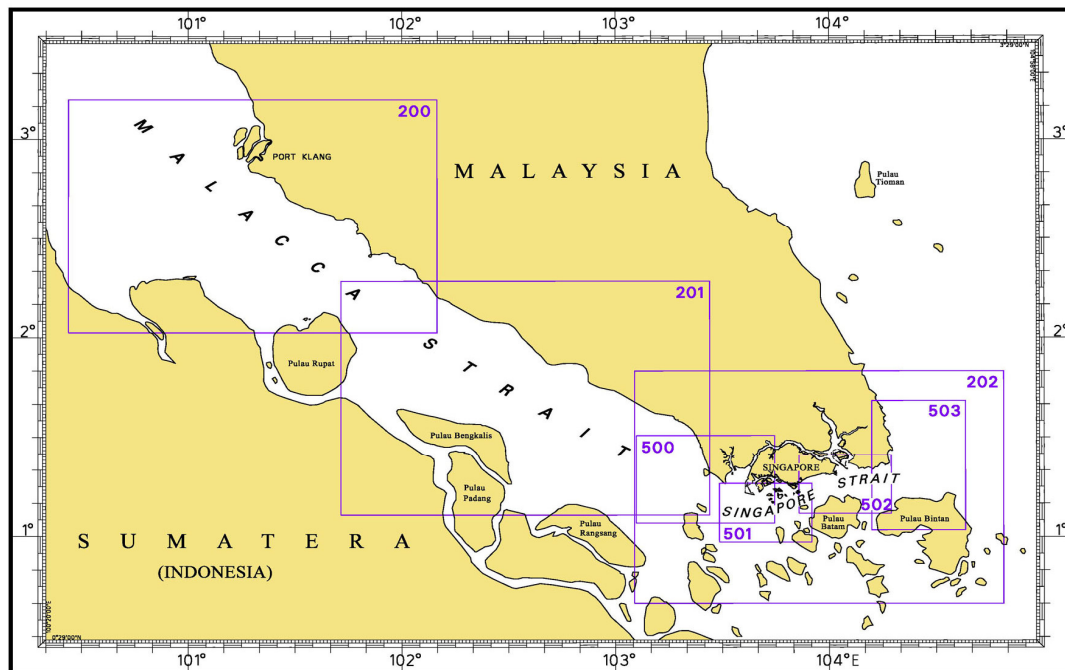
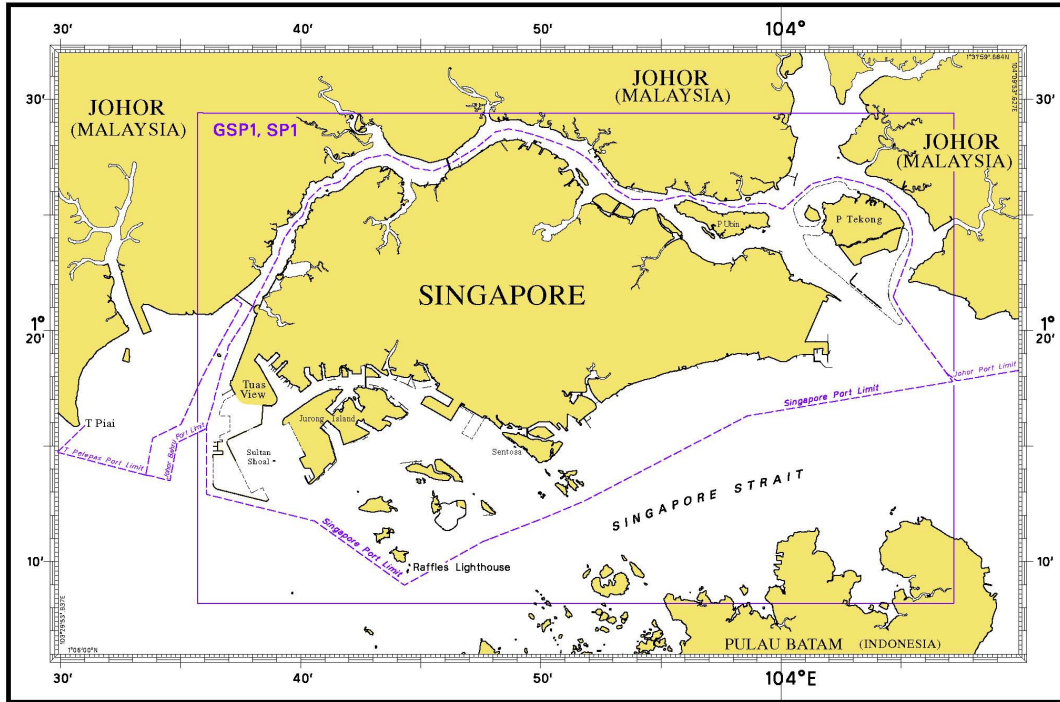
INDEX OF NOTICES

NOTICE NO.	DESCRIPTION	PAGE NO.
-	Index of Singaporean Charts	3
-	Index of Dual Badged Charts	4
-	Index of Singapore Electronic Navigational Chart (ENC)	5
-	New Edition Dual Badged Charts	6
-	New Edition Singaporean Charts	7
-	Singapore Tide Tables Year 2014	8 to 10
*85, 86	Singaporean Chart GSP1/SP1	11
86	Singaporean Chart 501	11
*85, 86	Singaporean Chart 502	11
*87T	Temporary and Preliminary Notices	12
*88	Singapore Port Marine Notices	13
*89	Singaporean Print-On-Demand (POD) Charts	13
*90	Amendments to Publications	14, 15
-	Reprint of Radio Navigational Warnings	16
-	Extract of Admiralty Notices to Mariners for Dual Badged Charts	17
-	Singapore Electronic Navigational Chart (ENC) Distributors	18
-	Chart Agents for the Maritime and Port Authority of Singapore Nautical Charts and Publications	19

* Denotes information are based on Singaporean source.

I INDEX OF CHARTS AND PUBLICATIONS

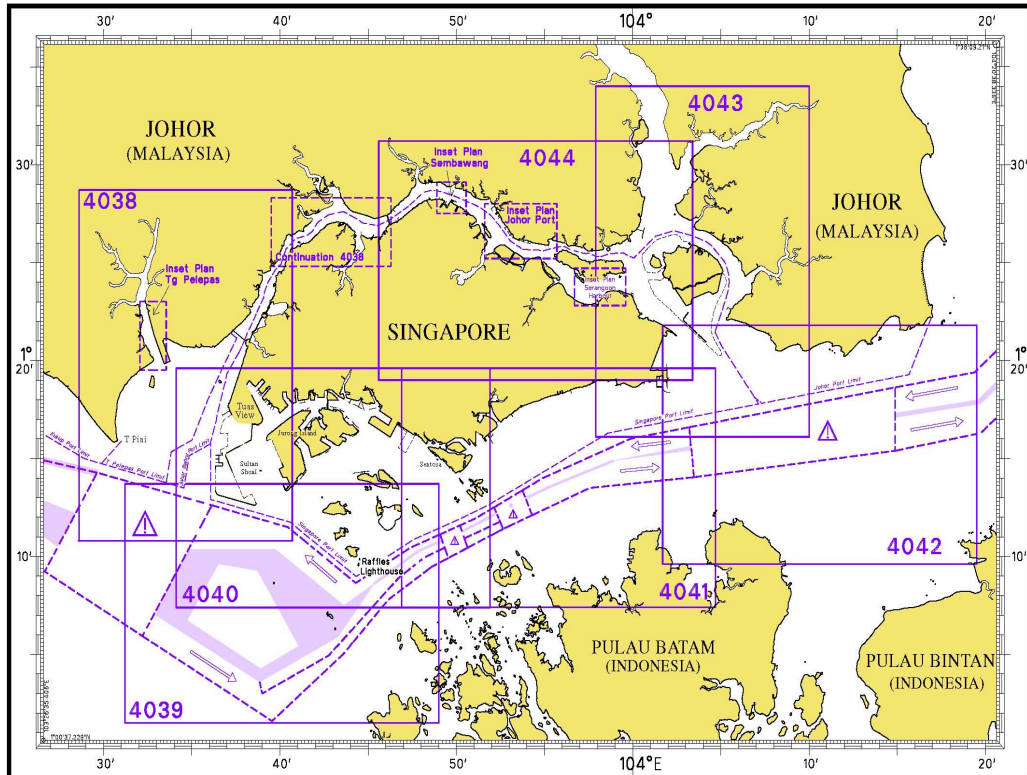
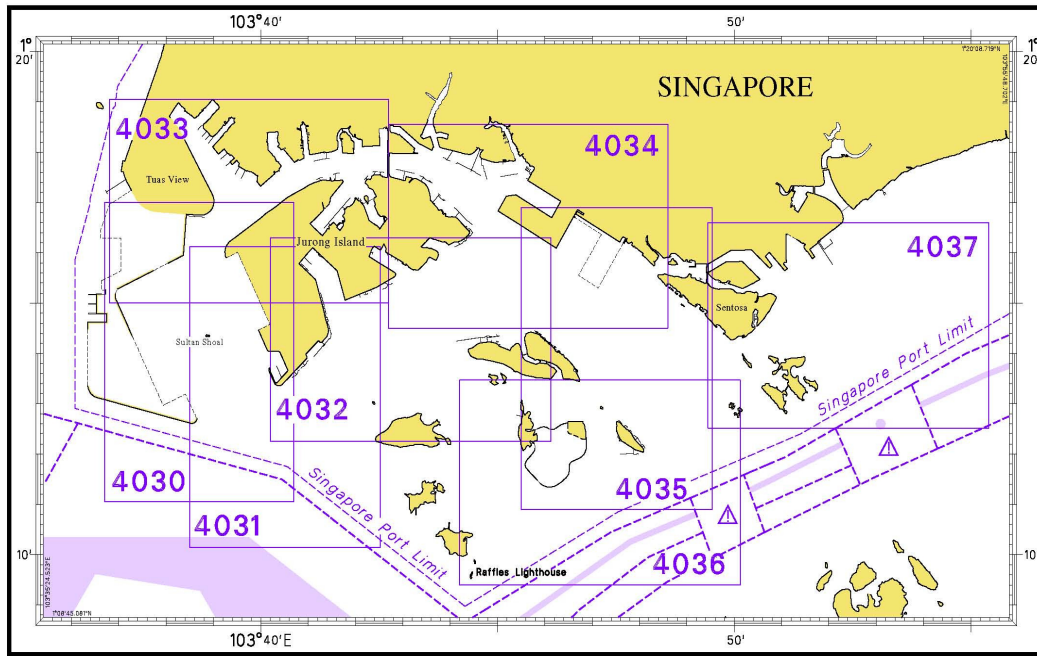
INDEX OF SINGAPOREAN CHARTS



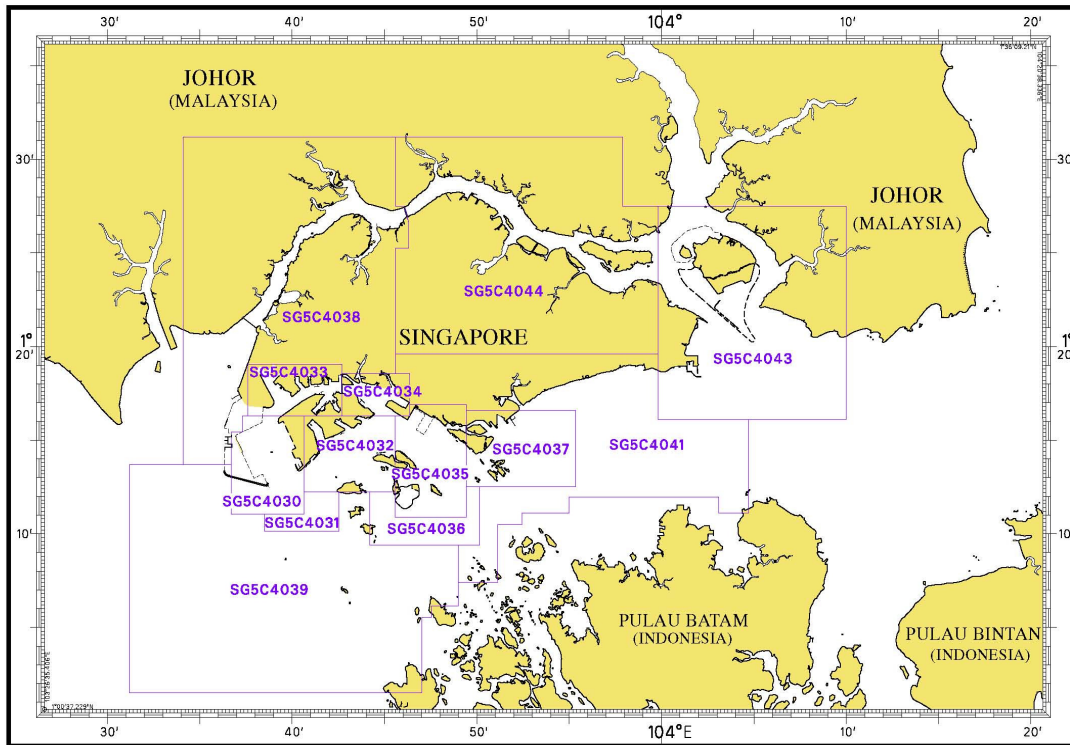
Notes:
Updated SINGAPOREAN Charts are available through our Print-On-Demand (POD) Chart Service. For more information, refer to Section III – Navigational Information. These charts can be purchased from our authorised Chart Agents.

I
INDEX OF CHARTS AND PUBLICATIONS

INDEX OF DUAL BADGED CHARTS



I
INDEX OF CHARTS AND PUBLICATIONS
INDEX OF SINGAPORE ELECTRONIC NAVIGATIONAL CHART (ENC)



COVERAGE OF SINGAPORE ELECTRONIC NAVIGATIONAL CHART (ENC)

ENC Name	ENC Coverage	ENC Edition
SG5C4030	West Jurong Anchorages and Temasek Fairway	5 th Edition (3/05/2012)
SG5C4031	Western Approaches to Jurong Island	5 th Edition (3/05/2012)
SG5C4032	Sinki Fairway	7 th Edition (3/05/2012)
SG5C4033	Tuas Bay, West Jurong Channel and Pesek Basin	5 th Edition (3/05/2012)
SG5C4034	East Jurong Channel, Pasir Panjang Terminal and West Keppel Fairway	11 th Edition (11/04/2013)
SG5C4035	Western Anchorages, Jong Fairway and Cruise Bay	14 th Edition (26/09/2013)
SG5C4036	Raffles Lighthouse to The Sisters	6 th Edition (3/05/2012)
SG5C4037	Keppel Harbour, Tanjong Pagar Terminal and Approaches	7 th Edition (25/04/2013)
SG5C4038	Johor Strait – Western Part	6 th Edition (26/09/2013)
SG5C4039	Western Approaches to Main Strait	5 th Edition (3/05/2012)
SG5C4041	Pulau Sebarok to Changi	7 th Edition (9/05/2013)
SG5C4043	Kuala Johor and Sungai Johor	9 th Edition (29/08/2013)
SG5C4044	Johor Strait – Eastern Part	9 th Edition (29/08/2013)

II NEW PUBLICATIONS

NEW EDITION DUAL BADGED CHARTS PUBLISHED ON 26TH SEPTEMBER 2013

Chart Number : 4035
Title : Port of Singapore
 Western Anchorages, Jong Fairway and Cruise Bay
Coverage : Lat 01° 10'·90 N 01° 16'·90 N
 Long 103° 45'·50 E 103° 49'·54 E
Scale : 1: 10 000
Date Published : 26th September 2013
Size of Chart : 749·4 x 1105·7 mm
Descriptions : This new edition includes changes to depths from the latest surveys covering south and west of Pasir Panjang Terminal, north of Pulau Bukom, west of Pulau Sebarok, Shell SBM and south of Semakau spoil ground.

The existing chart of the same number published on 27th September 2012 is superseded.

Chart Number : 4038
Title : Malaysia and Singapore
 Johor Strait, Western Part
Coverage : Lat 01° 10'·80 N 01° 28'·70 N
 Long 103° 28'·60 E 103° 40'·70 E
Scale : 1: 30 000
Date Published : 26th September 2013
Size of Chart : 750·6 x 1100·2 mm
Descriptions : This new edition includes a **new inset plan covering Tuas Mega Yard** and changes to depths from the latest surveys covering Temasek Fairway, West Jurong Channel, Tuas Anchorages, Sudong Anchorage, west and south of Tuas View extension.

The existing chart of the same number published on 5th August 2010 is superseded.

II NEW PUBLICATIONS

NEW EDITION SINGAPOREAN CHARTS PUBLISHED ON 26TH SEPTEMBER 2013

Chart Number : 202
Title : Singapore Strait
Coverage : Lat 00° 40' 00 N 01° 50' 00 N
 Long 103° 05' 34 E 104° 48' 89 E
Scale : 1: 200 000
Date Published : 26th September 2013
Size of Chart : 960·0 x 644·7 mm
Descriptions : This new edition includes changes to depths from the latest surveys covering Singapore waters, submarine cables, updated coastlines of Tuas View Extension, Jurong Island, Marina South and Pulau Tekong.

The existing chart of the same number published on 24th September 2009 is superseded.

Chart Number : 500
Title : Malacca and Singapore Straits
 Pulau Pisang To Raffles Lighthouse
Coverage : Lat 01° 04' 05 N 01° 30' 50 N
 Long 103° 05' 80 E 103° 44' 61 E
Scale : 1: 75 000
Date Published : 26th September 2013
Size of Chart : 959·8 x 649·9 mm
Descriptions : This new edition includes changes to depths from the latest surveys covering Temasek and Sinki Fairways, Raffles Shoal, updated coastlines of Jurong Island and submarine cables.

The existing chart of the same number published on 7th October 2010 is superseded.

II NEW PUBLICATIONS

SINGAPORE TIDE TABLES YEAR 2014 PUBLISHED ON 4TH SEPTEMBER 2013

Summary of Publication

This 263-page book contains Tidal Height and Tidal Stream Predictions covering stations in Singapore port waters and along the Malacca and Singapore Straits. Two new stations namely Sultan Shoal and Banyan are included in this publication which consists of 5 segments.

1. **High and Low Water Predictions** at the following stations:
 - a) Tanjong Pagar
 - b) Sembawang

2. **Hourly Tidal Height Predictions** at the following stations:
 - a) **Sultan Shoal**
 - b) Raffles Lighthouse
 - c) West Coast
 - d) Bukom
 - e) Tanjong Pagar
 - f) Tanah Merah
 - g) Tanjong Changi
 - h) Sembawang
 - i) Singapore Strait – Horsburgh Lighthouse

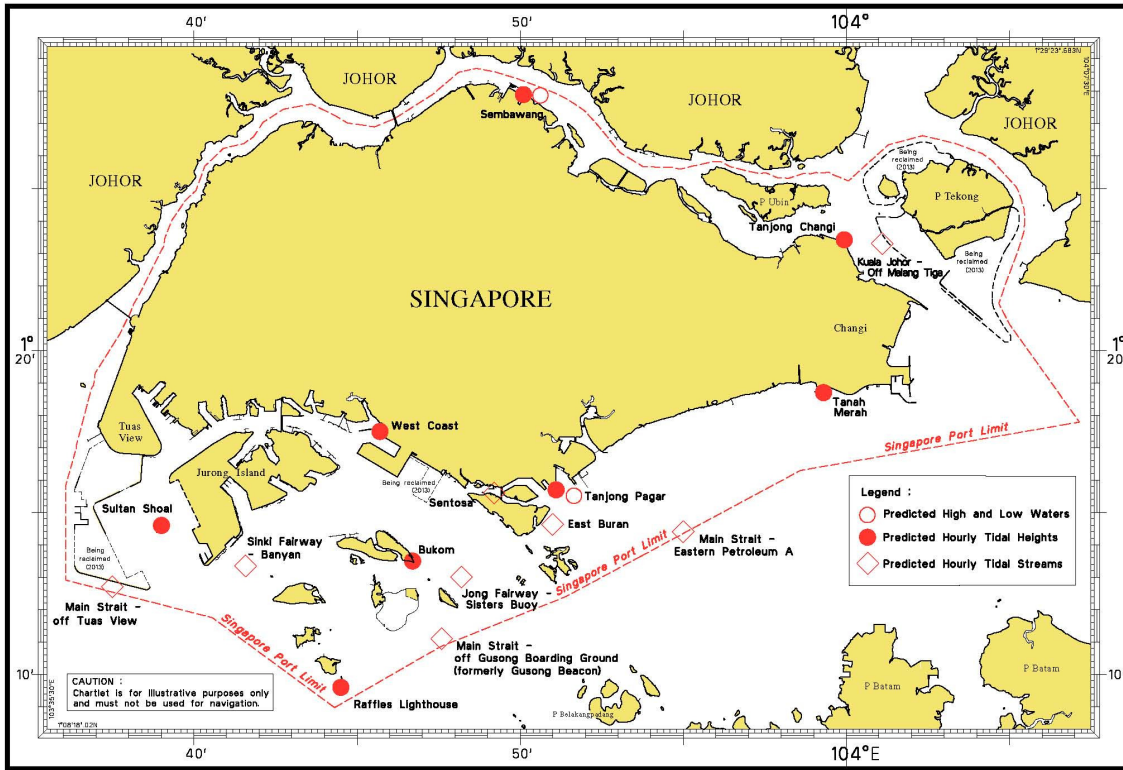
3. **Hourly Tidal Stream Predictions** at the following stations:
 - a) Main Strait – Off Tuas View
 - b) **Sinki Fairway – Banyan**
 - c) Jong Fairway – Sisters Buoy
 - d) Main Strait – Off Gusong Boarding Ground (formerly Gusong Beacon)
 - e) Sentosa
 - f) East Buran
 - g) Main Strait – Eastern Petroleum A
 - h) Kuala Johor – off Malang Tiga

4. **Maximum and Slack Tidal Stream Predictions** at the following stations:
 - a) Malacca Strait – Off The Brothers Light
 - b) Singapore Strait – Selat Phillip
 - c) Singapore Strait – Karang Banteng (Buffalo Rock)
 - d) Singapore Strait – Horsburgh Lighthouse

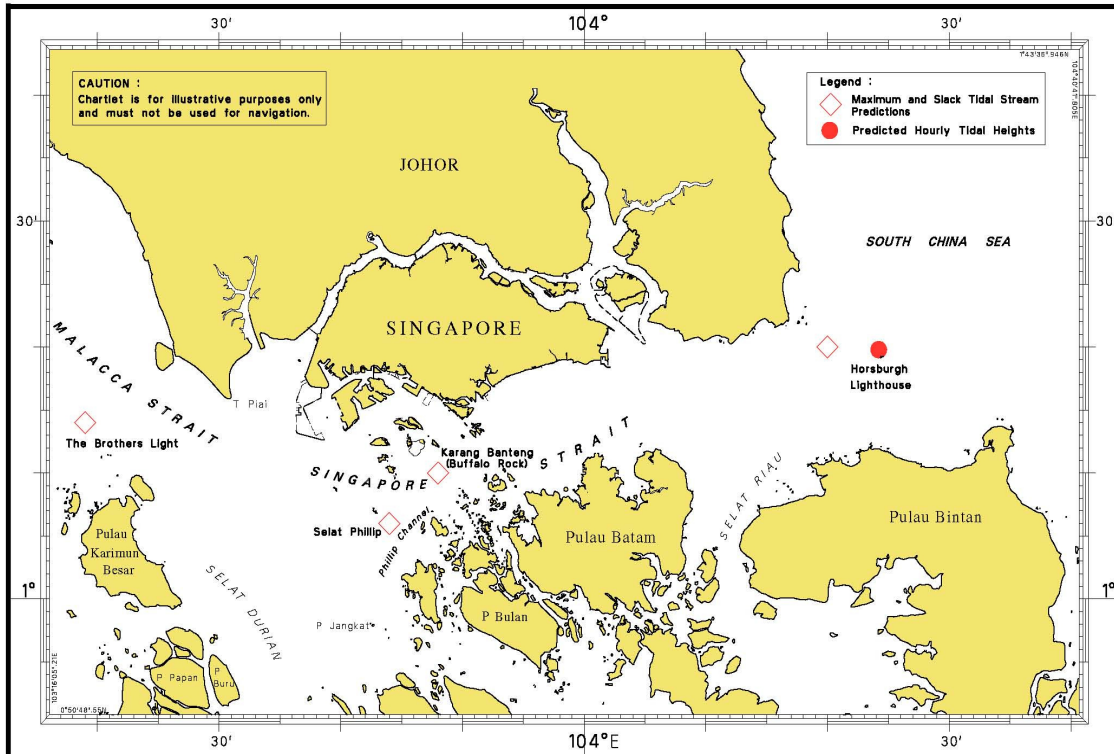
5. **Malacca Strait – High and Low Water Predictions** at the following stations:
 - a) Kedah Pier, Pulau Pinang
 - b) Port Dickson
 - c) Kuala Batu Pahat

The locations of the above stations are shown in the chartlets below:

II NEW PUBLICATIONS Tidal Prediction Stations within Singapore port waters



Tidal Prediction Stations in Malacca and Singapore Straits



II NEW PUBLICATIONS Tidal Prediction Stations in Malacca Strait



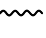
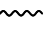


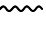


This publication is available from the following Chart Agents:

1. Cornes Singapore Pte Ltd
2. DPM (Singapore) Pte Ltd
3. E.W. Liner Charts & Publications Pte Ltd
4. Kelvin Hughes (Singapore) Pte Ltd
5. Motion Smith

Please refer Page 19 for details.

II
NOTICES TO MARINERS AND CHART CORRECTIONS

GSP1/SP1	8 Ed 16/05/13 Last NM 79/2013	(HD/HE025/194 & 195/2013)	*NM 85/2013
Insert	 Fl.Y.2s (sync) TK-MB1	1° 20·27'N	104° 04·73'E
	 Fl.Y.2s (sync) TK-MB2	1° 20·39'N	104° 04·59'E
		(Indonesian NM No. 31/355-2013)	NM 86/2013
Insert	'  ' joining from :	1° 08·36'N (shore)	103° 55·14'E
		1° 08·33'N	103° 55·07'E
		1° 08·92'N	103° 54·83'E
		1° 09·13'N	103° 54·33'E
		1° 09·14'N	103° 53·98'E
		1° 09·21'N (shore)	103° 53·63'E
<hr/>			
501	6 Ed 3/05/12 Last NM 40/2013	(Indonesian NM No. 31/355-2013)	NM 86/2013
Insert	'  ' joining from :	1° 08·39'N (border)	103° 55·05'E
		1° 08·92'N	103° 54·83'E
		1° 09·13'N	103° 54·33'E
		1° 09·14'N	103° 53·98'E
		1° 09·21'N (shore)	103° 53·63'E
<hr/>			
502	6 Ed 3/05/12 Last NM 52/2013	(HD/HE025/194 & 195/2013)	*NM 85/2013
Insert	 Fl.Y.2s (sync) TK-MB1	1° 20·27'N	104° 04·73'E
	 Fl.Y.2s (sync) TK-MB2	1° 20·39'N	104° 04·59'E
		(Indonesian NM No. 31/355-2013)	NM 86/2013
Insert	'  ' joining from :	1° 08·36'N (shore)	103° 55·14'E
		1° 08·33'N	103° 55·07'E
		1° 08·92'N	103° 54·83'E
		1° 09·13'N	103° 54·33'E
		1° 09·14'N	103° 53·98'E
		1° 09·21'N (shore)	103° 53·63'E

II
TEMPORARY AND PRELIMINARY NOTICES

***(NM 87T/2013) Tompok Utara light beacon collapsed.**

Collapsed upper structure of Tompok Utara light beacon has been found submerged close to its charted position at 1°27.76' N 104°27.02' E.
A temporary isolated danger buoy has been established at position 1°27.78' N 104°27.19' E with light character FI(2)10s.

Remark : Mariners are advised to navigate with caution.

Charts affected : 202 and 503

Source : HD/Job No. 128N/2013
 (Notices to Mariners No. 6/62T/2013 is cancelled)
 (Repetition of Notices to Mariners No. 9A/84T/2013)

III NAVIGATIONAL INFORMATION

***(NM 88/2013) SINGAPORE PORT MARINE NOTICES**

The following Port Marine Notices have been shortlisted, as they would be of particular interest to mariners.

These notices can be accessed directly from MPA website:
www.mpa.gov.sg/sites/port_and_shipping/circulars_and_notices/port_marine_notices.page

PMN No.	Subject
115/2013	Repair of floating sea barrier off Poyan Reservoir, east of Tuas Checkpoint bridge.
116/2013	Construction of jetty at "LUBPARK" Shared Facility, off Tuas View Extension, West Johor Strait.
117/2013	Soil investigation works off Tuas View.
118/2013	Construction of Floating Sea Barrier at Sentosa Cove.
119/2013	Reclamation work at Tuas View Extension.
120/2013	Dredging works off Sembawang Wharves.
126/2013	Soil investigation works off Pulau Sebarok.
128/2013	Dredging work at Keppel Shipyard Benoi Road, off West Jurong Channel.

***(NM 89/2013) SINGAPOREAN PRINT-ON-DEMAND (POD) CHARTS**

Print-On-Demand (POD) Charts are the most up-to-date paper nautical charts printed for navigational use. These nautical charts are produced in accordance with the International Hydrographic Organisation (IHO) chart specifications. These official nautical charts are continually updated to the latest Notices to Mariners before they are printed and sold to users.

These POD Charts include 200, 201, 202, 500, 501, 502 and 503.

BENEFITS TO OUR CUSTOMERS

Convenience

Customers need not make numerous hand corrections to the nautical charts before use. In addition the updated POD Charts are more accurate and reliable than offset printed charts with hand corrections.

Clarity

Clarity in the presentation of updated information as compared to lithographic printed charts, where in some cases there are several overlapping corrections over existing information.

Coverage

The POD Charts cover the Malacca and Singapore Straits, from One Fathom Bank to Horsburgh Lighthouse.

III AMENDMENTS TO PUBLICATIONS

***(NM 90/2013) UPDATING OF PUBLICATION "SINGAPORE PORT INFORMATION 2012/2013"**

1. Page 162 – Item 9

WHARVES AND BERTHS

MARINA SOUTH (MARINA BAY CRUISE CENTRE)(1°15.9'N, 103°51.6'E)

Amend the following:

Berth	Length of Berth	Depth Alongside (Year Surveyed)
1	373m	11.4m (2013)
2	396m	11.4m (2013)

Source: HD/HY Code A00104313

2. Page 166 – Item 23

JURONG ISLAND (OILTANKING SINGAPORE)(1°16.8'N, 103°44.1'E)

Amend the following:

Berth	Length of Berth	Max LOA	Depth Alongside (Year Surveyed)	Controlling Depth In Approaches
1	140m	116m	14.5m (2013)	13.3m
3	124m	103m	14.3m (2013)	13.3m

Source: HD/HY Code H00101513

3. Page 181 – Item 15

DOCKS AND REPAIR BERTHS

SEMBAWANG SHIPYARD (SEMBAWANG SHIPYARD PTE LTD)(1°27.9'N, 103°49.5'E)

Berth	Length of Berth	Depth Alongside (Year Surveyed)	Controlling Depth In Approaches
8	350m	8.6m (2013)	10.7m
9	240m	8.6m (2013)	10.5m
10/11	250m	6.3m (2012)	8.7m
Finger Pier 12	350m	7.4m (2012)	10.8m
12A	250m	7.0m (2012)	9.9m
14	250m	8.8m (2012)	9.9m
16	220m	7.4m (2013)	9.9m

Berthing facilities total 2026m

Service Pier*

17	230m	10.2m (2013)	11.3m
18	190m	10.6m (2012)	11.3m
19	170m	12.0m (2011)	-
20	290m	11.6m (2013)	11.4m
22	311m	10.7m (2013)	-
23	253m	11.2m (2013)	-

*Wharf length includes the mooring dolphins at each length.

Source: Berth List dated 16.9.2013

III
AMENDMENTS TO PUBLICATIONS

UPDATING OF PUBLICATION “SINGAPORE PORT INFORMATION 2012/2013”

4. Page 182

TUAS – SEMCORP MARINE TUAS SHIPYARD(1°15.1’N, 103°36.6’E)

Berth	Length of Berth	Depth Alongside (Year Surveyed)	Controlling Depth In Approaches
YST 01	187m	12.0m (2013)	15.0m
YST 02	363m	9.0m (2013)	15.0m
YST 03	363m	9.0m (2013)	15.0m
YST 05	363m	9.0m (2013)	15.0m
YST 06	0-83m	9.1m (2013)	15.0m
	83-363m	15.0m (2013)	
YST 07	0-43m	9.0m (2013)	15.0m
	43-363m	15.0m (2013)	
YST 08	0-43m	9.0m (2013)	15.0m
	43-363m	15.0m (2013)	
YST 09	0-43m	9.1m (2013)	15.0m
	43-363m	15.0m (2013)	
YST 10	0-43m	9.0m (2013)	15.0m
	43-363m	15.0m (2013)	
YST 11	363m	15.0m (2013)	15.0m
YST 12	363m	9.0m (2013)	15.0m

Source: Berth List dated 16.9.2013

IV
REPRINT OF RADIO NAVIGATIONAL WARNINGS

The following Radio Navigational Warnings have been shortlisted, as they would be of particular interest to mariners.

TT112

GERITA BEACON Fl(2)10S IN POSITION LAT 01°13.417'N LONG 103°43.483'E IS REPORTED DAMAGED. VESSELS TO NAVIGATE WITH CAUTION.

TT117

BUFFALO ROCK BUOY Fl(2)5S IN THE DEEP WATER ROUTE OF SINGAPORE STRAIT IN POSITION 01°09.85'N 103°48.10'E IS UNLIT.

TT118

HALF SUBMERGED WRECK AND DANGER TO NAVIGATION IS MARKED BY ISOLATED DANGER BUOY AT POSITION LAT 01°26.460'N LONG 104°25.830'E. MARINERS ARE ADVISED TO NAVIGATE WITH CAUTION WHEN IN THE VICINITY.

TT173

VESSELS IN EAST JOHOR STRAIT ARE ADVISED TO NAVIGATE WITH CAUTION WHEN NEAR THE PROJECT AREAS OFF PULAU TEKONG, CHANGI AND MALANG PAPAN AS SHALLOW WATER AREAS EXIST. VESSELS ARE ADVISED TO KEEP LOOKOUT FOR TUGS AND BARGES NAVIGATING NEAR THE PROJECT AREAS AND PASSENGER FERRIES CROSSING BETWEEN CHANGI AND PULAU TEKONG AND VICINITY OF PASIR GUDANG.

TT961

VESSELS INTENDING TO CROSS THE TRAFFIC SEPARATION SCHEME(TSS) OR PRECAUTIONARY AREAS IN THE SINGAPORE STRAIT DURING THE HOURS OF DARKNESS ARE RECOMMENDED TO DISPLAY THE NIGHT SIGNALS CONSISTING OF 3 ALL-ROUND GREEN LIGHTS IN A VERTICAL LINE WITH EFFECT FROM 1ST JULY 2011 AT 010000UTC (0800SGT) AS DETAILED IN MARITIME AND PORT AUTHORITY OF SINGAPORE'S PORT MARINE CIRCULAR, 02 OF 2011 DATED 30 MAY 2011.

ISSUED BY SINGAPORE PORT OPERATIONS CONTROL CENTRE (as at 29th September 2013)

V
**EXTRACT OF ADMIRALTY NOTICES TO MARINERS
 FOR DUAL BADGED CHARTS**

These notices can also be accessed directly from UKHO Website:
www.ukho.gov.uk/ProductsandServices/MaritimeSafety/Pages/NMPublic.aspx

3844 SINGAPORE – Sultan Shoal Lighthouse West-north-westwards and Jurong Island - Jetties. Dredged areas. Dredged depths. Berths. Dolphin. Coastline. Depths. Works. Buoyage. Maritime limit.

Source: Maritime and Port Authority of Singapore

Chart 4030 [*previous update 3013/13*] WGS84 DATUM

Insert	the accompanying block A, showing new jetties, dredged areas, dredged depths, berths and dolphin and amendments to coastline and depths, centred on:	1° 13'·730N., 103° 40'·420E.
	the accompanying block B, showing new buoyage and amendments to works and depths, centred on:	1° 14'·950N., 103° 37'·790E.

Chart 4031 [*previous update 3438/13*] WGS84 DATUM

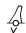
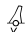
Insert	the accompanying block, showing new jetties, dredged areas, dredged depths, berths and dolphin and amendments to coastline and depths, centred on:	1° 13'·700N., 103° 40'·300E.
Delete	 <i>Fl.Y.8s BB2</i>	1° 15'·397N., 103° 41'·314E.
	 <i>Fl.Y.6s BB3</i>	1° 15'·257N., 103° 41'·353E.
	maritime limit, pecked line, and associated legend, Works in progress (2012), joining:	1° 15'·444N., 103° 41'·160E. (shore) 1° 15'·479N., 103° 41'·277E. 1° 15'·255N., 103° 41'·340E. 1° 15'·221N., 103° 41'·223E. (shore)

Chart 4032 [*previous update 3438/13*] WGS84 DATUM

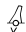
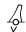
Delete	 <i>Fl.Y.8s BB2</i>	1° 15'·397N., 103° 41'·314E.
	 <i>Fl.Y.6s BB3</i>	1° 15'·257N., 103° 41'·353E.
	maritime limit, pecked line, and associated legend, Works in progress (2012), joining:	1° 15'·444N., 103° 41'·160E. (shore) 1° 15'·479N., 103° 41'·277E. 1° 15'·255N., 103° 41'·340E. 1° 15'·221N., 103° 41'·223E. (shore)

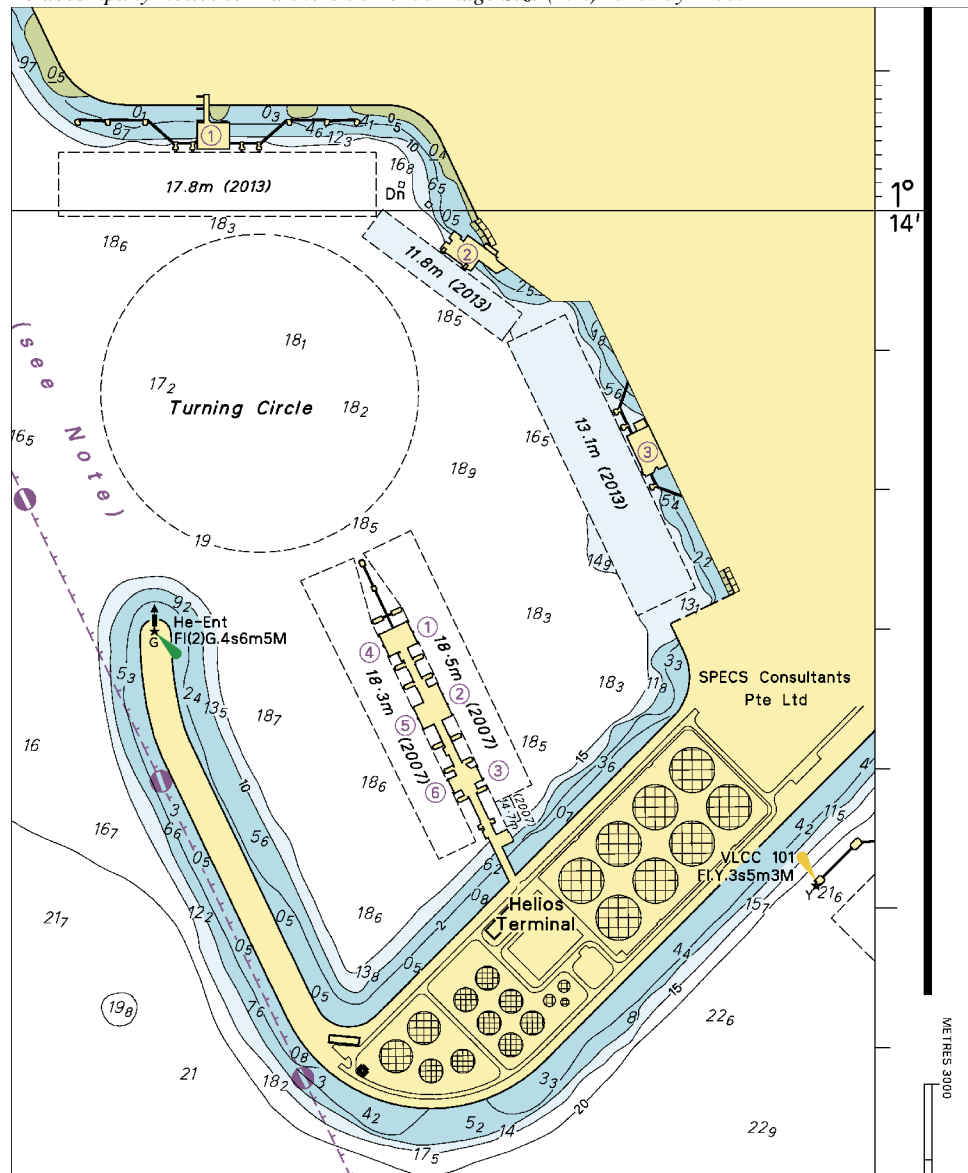
Chart 4033 [*previous update 2811/13*] WGS84 DATUM

Amend	dredged depth to, 11.0m (2013) , centred on:	1° 17'·634N., 103° 42'·411E.
-------	---	------------------------------

Chart 4040 [*previous update 3438/13*] WGS84 DATUM

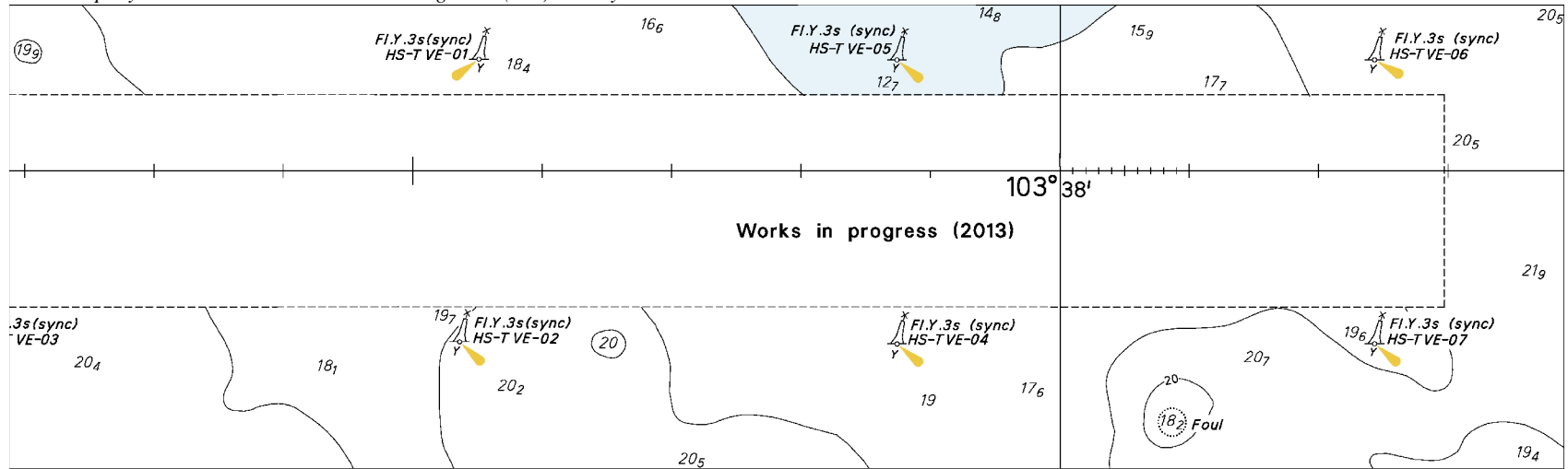
Insert	the accompanying block, showing new buoyage and amendments to works and depths, centred on:	1° 15'·05N., 103° 37'·60E.
--------	---	----------------------------

To accompany Notice to Mariners 3844/13. Image Size (mm) 154.6 by 127.6



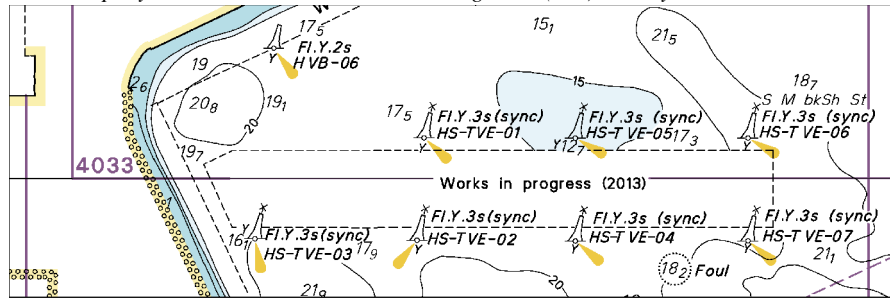
Block A for Chart No 4030

To accompany Notice to Mariners 3844/13. Image Size (mm) 66.5 by 222.9



Block B for Chart No 4030

To accompany Notice to Mariners 3844/13. Image Size (mm) 38.6 by 117.4



Block for Chart No 4040

MPA ENC DISTRIBUTORS

ENC DISTRIBUTOR	ADDRESS	TELEPHONE/FAX NO./EMAIL/WEBSITE
<p>ChartWorld GmbH</p> <p>ChartWorld Asia Pacific Pte Ltd.</p>	<p>Atlantic Haus, Zirkusweg 1 D-20359 Hamburg Germany</p> <p>Frontech Centre 07-01, 15 Jalan Kilang Barat, Singapore 159357</p>	<p>Tel. No.: +49 40 853 58 6942 Fax No.: +49 40 853 58 6949 Email: sales@chartworld.com</p> <p>Tel No.: +65 6513 3500</p> <p>Website : http://www.chartworld.com http://www.ecdis-as-a-service.com</p>
<p>DPM (Singapore) Pte Ltd</p>	<p>2 Boon Leat Terrace, #05-02/03 Harbourside 2, Singapore 119844</p>	<p>Tel. No.: +65 6270 4060 Fax No.: +65 6276 3858 Email: sales@dpmsingapore.com.sg Website:http://www.dpmsingapore.com.sg</p>
<p>Maritime Information Systems (MARIS)</p> <p>Maritime Information Systems AS (MARIS)</p>	<p>52, Telok Blangah Road #01-06, Telok Blangah House, Singapore 058809</p> <p>Danholmen 25, 3128 Notteroy, Norway</p>	<p>Tel. No.: +65 6276 1472 Fax No.: +65 6276 1473 Email: : support@maris.sg Website: http://www.maris.no</p> <p>Tel. No.: +47 33 30 42 50 Fax No.: +47 33 30 42 51 Email: : sales@maris.no Website: http://www.maris.no</p>
<p>Motion Smith</p>	<p>15 Jalan Kilang Barat #08-01/05 Frontech Centre, Singapore 159357</p>	<p>Tel. No.: +65 6220 5098 Fax No.: +65 6225 4902 Email: sales@motsmith.com Website: http://www.motsmith.com</p>
<p>Transas Marine Pacific Pte Ltd</p>	<p>Cyber Centre 16/18 Jalan Kilang Barat Off Jalan Bukit Merah Singapore 159358</p>	<p>Tel. No.: +65 6271 0200 Fax No.: +65 6271 7300 Email: navigation.asia@transas.com Website: http://www.transas.com</p>
<p>Japan Hydrographic Association (Electronic Charts Division)</p>	<p>Daiichi Sogo Bldg, 6F 1-6-6, Hanedakuko, Ota-ku Tokyo 144-0041, Japan</p>	<p>Tel. No.: +81 3 5708 7093 Fax No.: +81 3 5708 7094 Email: shimizu-6ki@jha.jp Website: http://www.jha.or.jp/en/jha/</p>
<p>Jeppesen Norway AS</p>	<p>P.O Box 212 , N-4371 Egersund, Norway</p>	<p>Tel No.: +47 51 46 4700 Fax No: +47 51 46 4701 Email: license.marine@jeppesen.com Website : http://www.jeppesen.com/marine</p>
<p>PRIMAR STAVANGER</p>	<p>Lervigsveien 36, P.O Box 60, N-4001 Stavanger, Norway</p>	<p>Tel. No.: +47 51 93 9500 Fax No.: +47 51 93 9501 Email: sales@ecc.no Website : http://www.primar.no</p>
<p>The United Kingdom Hydrographic Office</p>	<p>Admiralty Way, Taunton, Somerset, TA1 2DN United Kingdom</p>	<p>Tel. No.: +44 1823 33 7900 Fax No.: +44 1823 28 4077 Emails: ENC.SalesReports@ukho.gov.uk Website: http://www.ukho.gov.uk</p>

Chart Agents for the Maritime and Port Authority of Singapore
Nautical Charts and Publications

Please approach any of the appointed chart agents to purchase the Singapore Nautical Charts and Publications.

CHART AGENT	ADDRESS	TELEPHONE/FAX NO./EMAIL/WEBSITE
Cornes (Singapore) Pte Ltd	10 Anson Road #23-06/6A International Plaza Singapore 079903	Tel. No.: +65 6223 8320 Fax No.: +65 6223 8321 Email: sales9850@cspl.sg Website: http://www.cornes-charts.com
DPM (Singapore) Pte Ltd	2 Boon Leat Terrace, #05-02/03 Harbourside 2, Singapore 119844	Tel. No.: +65 6270 4060 Fax No.: +65 6276 3858 Email: sales@dpmsingapore.com.sg Website: http://www.dpmsingapore.com.sg
E.W. Liner Charts & Publications Pte Ltd	102F, Pasir Panjang Road, #08-01, Citilink Warehouse Complex, Singapore 118530	Tel. No.: +65 6323 0773 Fax No.: +65 6323 0775 Email: ewliner@singnet.com.sg Website: http://www.ewliner.com
Kelvin Hughes (Singapore) Pte Ltd	896 Dunearn Road #03-05 Sime Darby Centre Singapore 589472	Tel. No.: +65 6545 9880 Fax No.: +65 6545 8892 Email: leslie.khoo@kelvinhughes.com.sg Website: http://www.kelvinhughes.com
Motion Smith	15 Jalan Kilang Barat #08-01/05 Frontech Centre Singapore 159357	Tel. No.: +65 6220 5098 (After office hours:+65 8163 9993) Fax No.: +65 6225 4902 Email: sales@motsmith.com Website: http://www.motsmith.com

HYDROGRAPHIC NOTE - Instructions

1. Mariners are requested to notify the Chief Hydrographer, Maritime and Port Authority of Singapore, when new or suspected dangers to navigation are discovered, changes are observed in aids to navigation or where corrections to nautical publications may be necessary. Reports, which cannot be confirmed or are lacking in certain details should not be withheld.
2. Any ambiguities of time, positioning and depth should be stressed and any firm expectation of being able to check the information provided on a following voyage should be mentioned.
3. Mariners using satellite position fixing systems, eg. GPS, should provide details of equipment and datum used (where applicable). Where bearings (true or magnetic) are taken visually or by radar to fix a position, it should include more than two objects in order to provide a check on its accuracy. A position may also be defined by bearing and distance from a conspicuous object eg. beacon, lighthouse etc.
4. The note should include a tracing or a digital image of the chart used and the details should be clearly marked.
5. Echo sounders frequently register greater depths than the advertised maximum depth for the equipment, eg. a trace appearing at 50 metres may be in fact be 550 metres or even 1050 metres for equipment whose maximum depth is 500 metres. Erroneous depths caused by 2nd transmission error can usually be recognised by the following:
 - (a) the tracing being weaker than normal for the depth registered,
 - (b) the trace appearing to pass through the transmission line,
 - (c) the feathery nature of the trace.
6. Upon receipt of a hydrographic note, a Notice to Mariners may be issued. The sender's vessel or name is quoted as the source unless the same information is also received in foreign Notices to Mariners.
7. Reports of shoals, uncharted dangers and defects in aids to navigation may also be made to the appropriate Singapore Port Operations Control Centre on VHF Channels 10, 12, 14, 68 or 73.

HYDROGRAPHIC NOTE

To:

Chief Hydrographer
Maritime and Port Authority of Singapore
460 Alexandra Road PSA Building #20-00
Singapore 119963

Tel : (65) 6375 1227
Fax : (65) 6278 7646
Email : hydrographic@mpa.gov.sg

Sender's Contact Details :

Date :

Name of Vessel :

Address of Sender :

Tel : Fax :

Email :

Nature of Observation :

General Location :

Subject :

Position : Lat. Long.

Charts Used :

Date & Time of Observation :

Details :

.....

.....

Attachment :

Equipment Used :

Type of Position Fixing : GPS / DGPS Others :

Type of Echo Sounder :

Name and Signature :

Ship's/Company's Stamp :