



SINGAPOREAN NOTICES TO MARINERS

SECTION	CONTENT	Page
I	Affected Charts & Publications	1
II	New Charts & Publications	3
	Notices to Mariners and Chart Corrections	8
	Temporary and Preliminary Notices	9
III	Navigational Information	10
	Amendments to Publications	11
IV	Reprint of Maritime Safety Information	16
V	Extract of Admiralty Notices to Mariners for Dual-Badged Charts	18

The monthly Notices to Mariners contain information required to keep charts and publications published by the Hydrographic Department, Maritime and Port Authority of Singapore up-to-date.

Mariners are requested to notify the Chief Hydrographer, Maritime and Port Authority of Singapore, immediately of the discovery of new or suspected dangers to navigation, observed changes to aids to navigation and ways Singaporean Charts and Publications can be improved. The Hydrographic Note on the back page should be used for this purpose.

Detailed information of charts and publications (coverage of charts, latest editions and distributors) are available on the Maritime and Port Authority Website: www.mpa.gov.sg

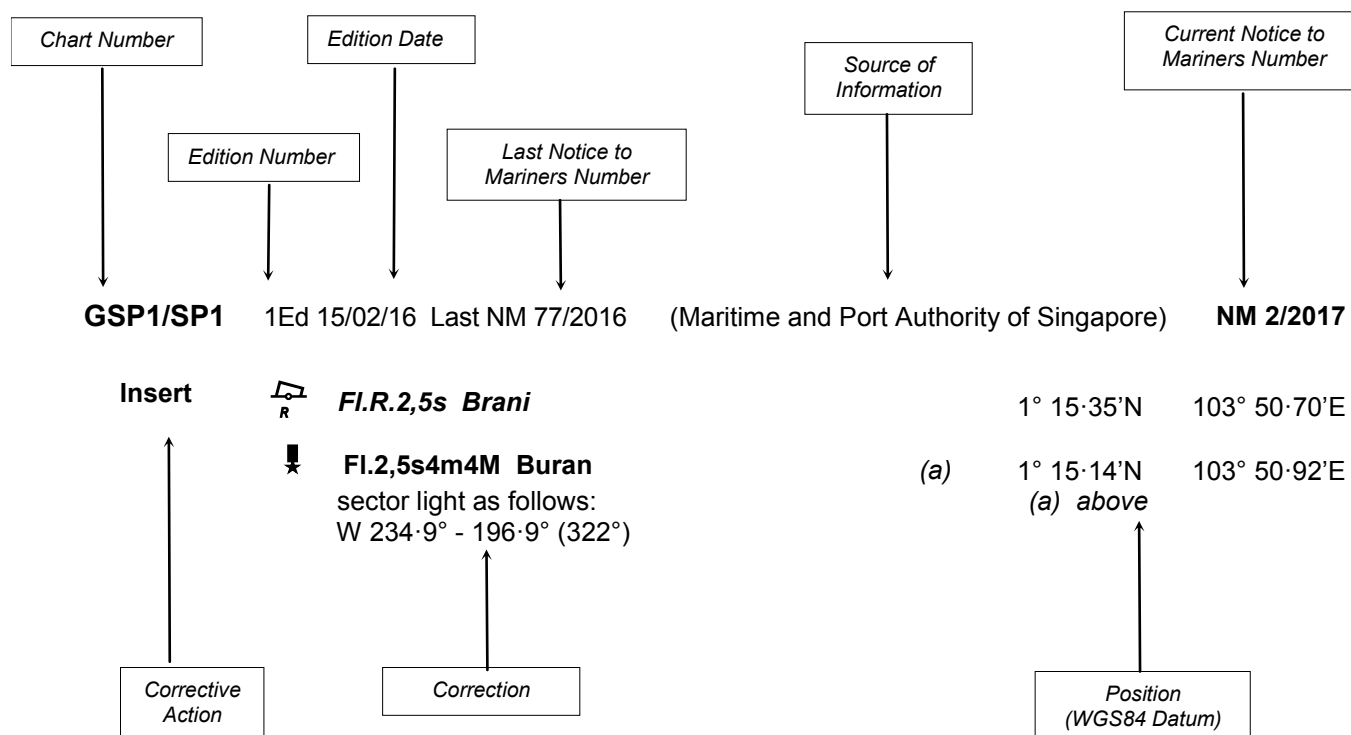
- [Singaporean Notice to Mariners](#)
- [Singaporean Charts](#)
- [Dual-Badged Charts](#)
- [Singapore ENC](#)
- [Malacca and Singapore Straits ENC](#)
- [Singapore Port Information](#)
- [Singapore Tide Tables](#)

Contact information:

Hydrographic Department
Maritime and Port Authority of Singapore
7B Keppel Road
#20-00 Tanjong Pagar Complex
Singapore 089055
Tel : (65) 6325 2027
Fax : (65) 6226 1076
Email : hydrographic@mpa.gov.sg

EXPLANATION OF FORMAT

The elements of a typical chart correction are explained below.



Notes:

a) Notice to Mariners number followed by:

T indicates a Temporary Notice (eg. **NM 3T/2017**).

P indicates a Preliminary Notice (eg. **NM 4P/2017**).

b) Bearings are true reckoned clockwise from 000° to 359°; those relating to lights are from seaward.

c) Heights and elevations are above Mean High Water Springs.

I
AFFECTED CHARTS AND PUBLICATIONS

INDEX OF AFFECTED CHARTS

DESCRIPTION	NOTICE NO.	PAGE NO.
New Charts and Publications	-	3, 4
Singapore Tide Tables 2018	-	5 to 7
Singaporean Chart GSP1/SP1	*88, *89, *90	8
Singaporean Chart 202	91	8
Singaporean Chart 502	*88	8
Singaporean Chart 503	91	8
Temporary and Preliminary Notices	-	9
Singapore Port Marine Notices/Circulars	*92	10
Amendments to Publications	*93	11 to 15
Reprint of Maritime Safety Information	-	16, 17
Extract of Admiralty Notices to Mariners for Dual-Badged Charts	-	18 to 20

*Source: Maritime and Port Authority of Singapore

I
AFFECTED CHARTS AND PUBLICATIONS

INDEX OF NOTICES

NOTICE NO.	DESCRIPTION	PAGE NO.
-	New Charts and Publications	3, 4
-	Singapore Tide Tables 2018	5 to 7
*88, *89, *90	Singaporean Chart GSP1/SP1	8
91	Singaporean Chart 202	8
*88	Singaporean Chart 502	8
91	Singaporean Chart 503	8
-	Temporary and Preliminary Notices	9
*92	Singapore Port Marine Notices/Circulars	10
*93	Amendments to Publications	11 to 15
-	Reprint of Maritime Safety Information	16, 17
-	Extract of Admiralty Notices to Mariners for Dual-Badged Charts	18 to 20

*Source: Maritime and Port Authority of Singapore

II NEW CHARTS AND PUBLICATIONS

NEW EDITION SINGAPOREAN CHARTS PUBLISHED ON 15TH SEPTEMBER 2017

Chart Number	:	201
Title	:	Malacca Strait Tanjung Keling to Western Entrance of Singapore Strait
Coverage	:	Lat 01° 06·43' N 02° 16·99' N Long 101° 42·91' E 103° 26·45' E
Scale	:	1 : 200 000
Date to be published	:	15 th September 2017
Size of Chart	:	960.0 x 650.0 mm
Description	:	This new edition includes new submarine cables and updated bathymetry details.

The existing chart of the same number published on 15th August 2014 has been superseded.

Chart Number	:	500
Title	:	Malacca and Singapore Straits Pulau Pisang To Raffles Lighthouse
Coverage	:	Lat 01° 04·05' N 01° 30·50' N Long 103° 05·80' E 103° 44·61' E
Scale	:	1 : 75 000
Date to be published	:	15 th September 2017
Size of Chart	:	959.8 x 649.9 mm
Description	:	This new edition includes updates covering Temasek Fairway and Sinki Fairway, Raffles Shoal, updated coastlines of Jurong Island and submarine cables.

The existing chart of the same number published on 26th September 2013 has been superseded.

II NEW CHARTS AND PUBLICATIONS

PORT APPROACH GUIDES FOR SINGAPORE TO BE PUBLISHED ON 26TH OCTOBER 2017

Chart Number	:	8285
Title	:	Port Approach Guide Singapore, Johor Strait - Eastern Part
Coverage	:	Lat 01° 18·77' N 01° 31·20' N Long 103° 45·60' E 104° 05·08' E
Scale	:	1 : 35 000
Date to be published	:	26 th October 2017
Size of Chart	:	1032.0 x 654.0 mm
Description	:	Port Approach Guides are single, port scale charts containing essential planning information for a single port. Taken from existing Admiralty charts and publications. It provides comprehensive information to assist mariners in their Singapore port entry and exit quicker and easier.

The full range of Admiralty Port Approach Guides is available from the Admiralty Chart agents. To find an Admiralty Chart agent, please visit:

<http://admiralty.co.uk/how-to-buy>

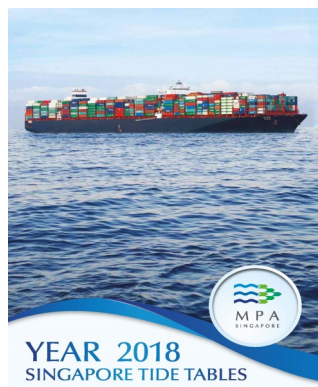
II NEW CHARTS AND PUBLICATIONS

SINGAPORE TIDE TABLES YEAR 2018 PUBLISHED ON 11TH SEPTEMBER 2017

Summary of Publication

This publication contains Tidal Height and Tidal Stream Predictions covering stations in Singapore Port Waters and along the Straits of Malacca and Singapore.

This publication consists of 5 segments.



1. High and Low Water Predictions at the following stations:

- a) Tanjong Pagar
- b) Sembawang

2. Hourly Tidal Height Predictions at the following stations:

- a) West Tuas
- b) Sultan Shoal Lighthouse
- c) Raffles Lighthouse
- d) West Coast
- e) Bukom
- f) Tanjong Pagar
- g) Tanah Merah
- h) Tanjong Changi
- i) Sembawang
- j) Singapore Strait - Horsburgh Lighthouse

3. Hourly Tidal Stream Predictions at the following stations:

- a) Main Strait - off Tuas View
- b) Sinki Fairway - Banyan
- c) Jong Fairway - off Sisters Buoy
- d) Main Strait - off Shell SBM Buoy
- e) Sentosa - off Cruise Bay
- f) East Buran
- g) Main Strait - Eastern Petroleum A
- h) Kuala Johor - off Malang Tiga

4. Maximum and Slack Tidal Stream Predictions at the following stations:

- a) Malacca Strait - off Pulau Iyu Kecil Light
- b) Singapore Strait - Selat Phillip
- c) Singapore Strait - Karang Banteng (Buffalo Rock)
- d) Singapore Strait - Horsburgh Lighthouse

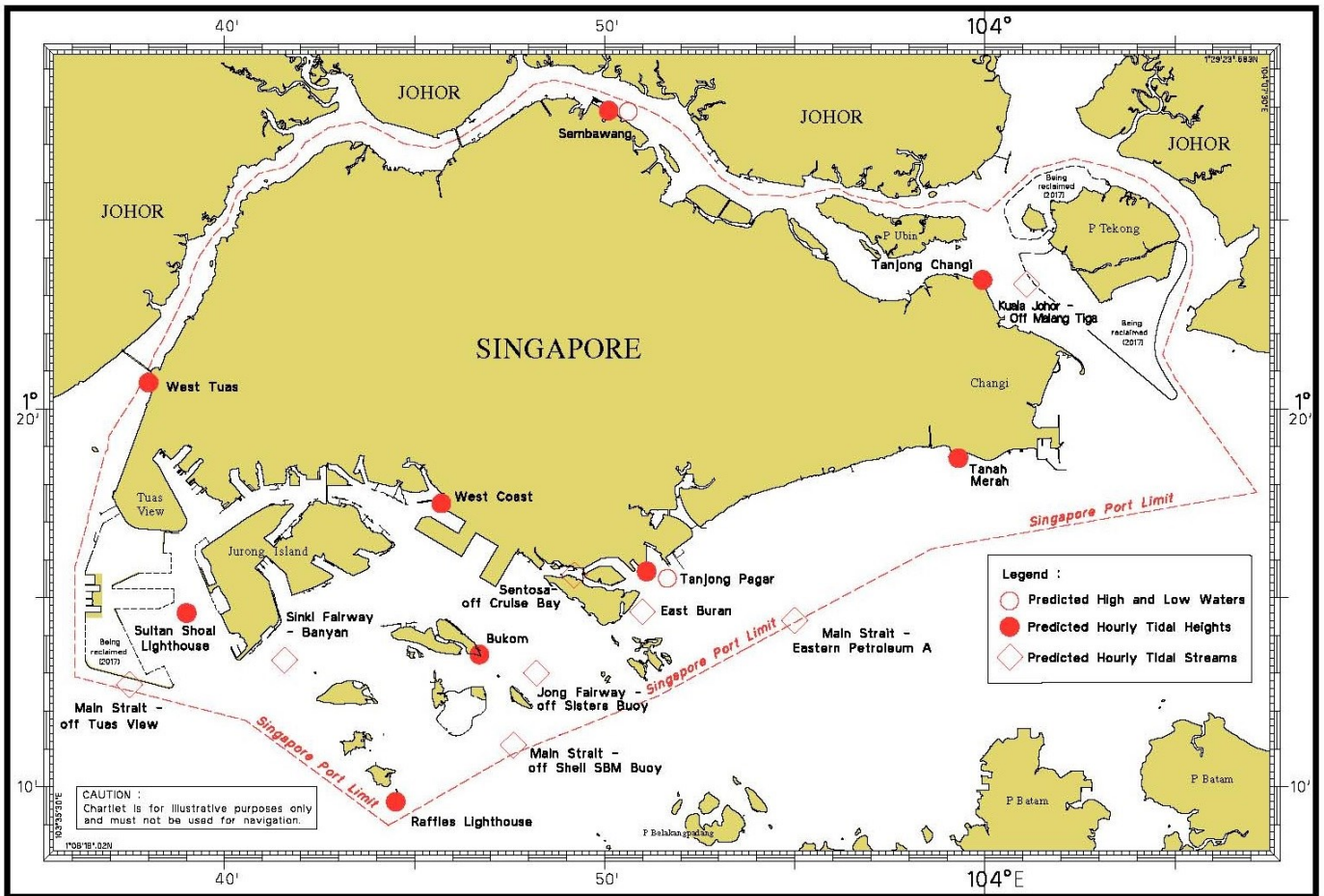
5. Malacca Strait - High and Low Water Predictions at the following stations:

- a) Kedah Pier, Pulau Pinang
- b) Port Dickson
- c) Kuala Batu Pahat

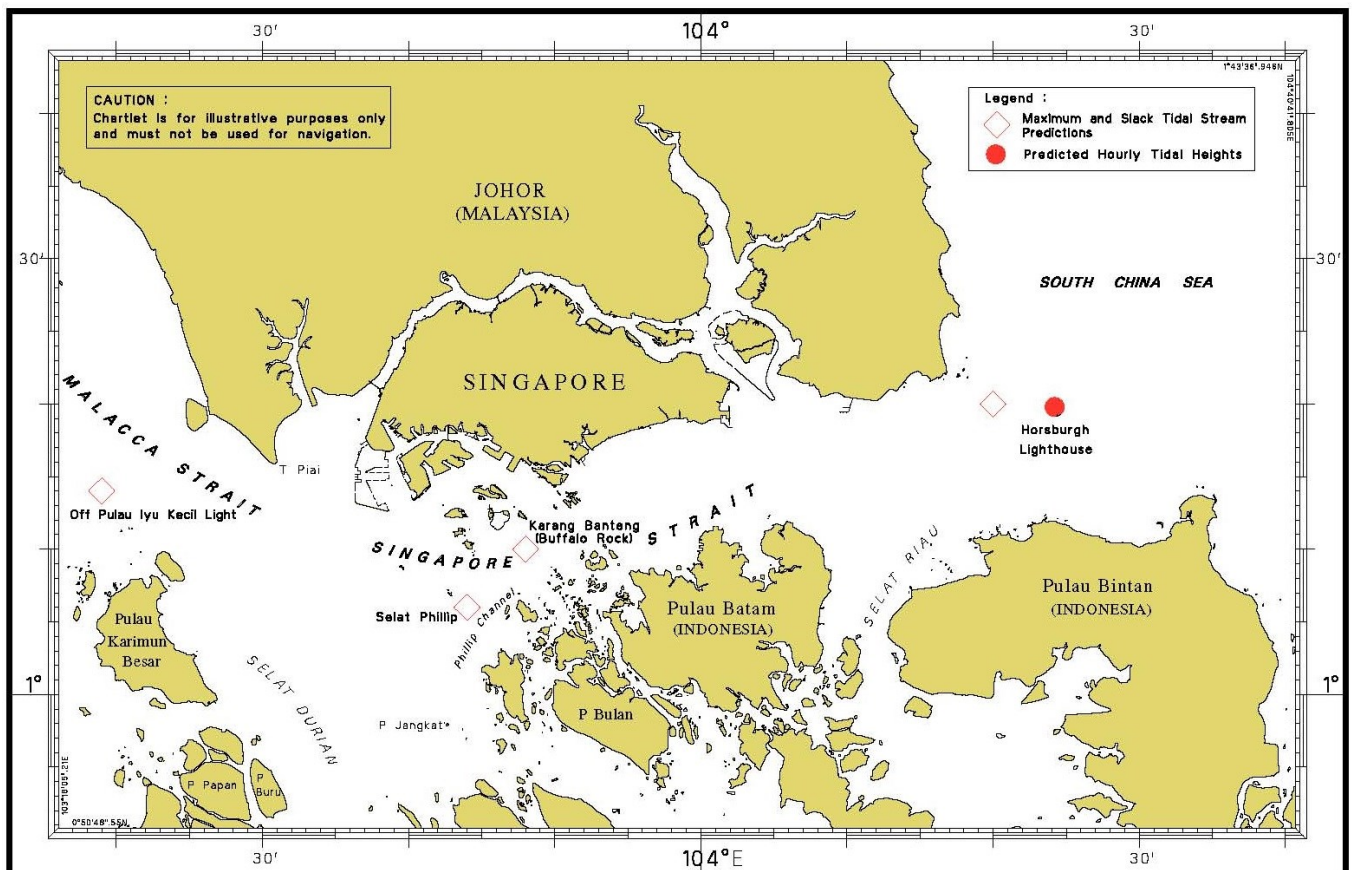
The locations of the above stations are shown in the chartlets below:

II NEW CHARTS AND PUBLICATIONS

Tidal Prediction Stations within Singapore Port Waters

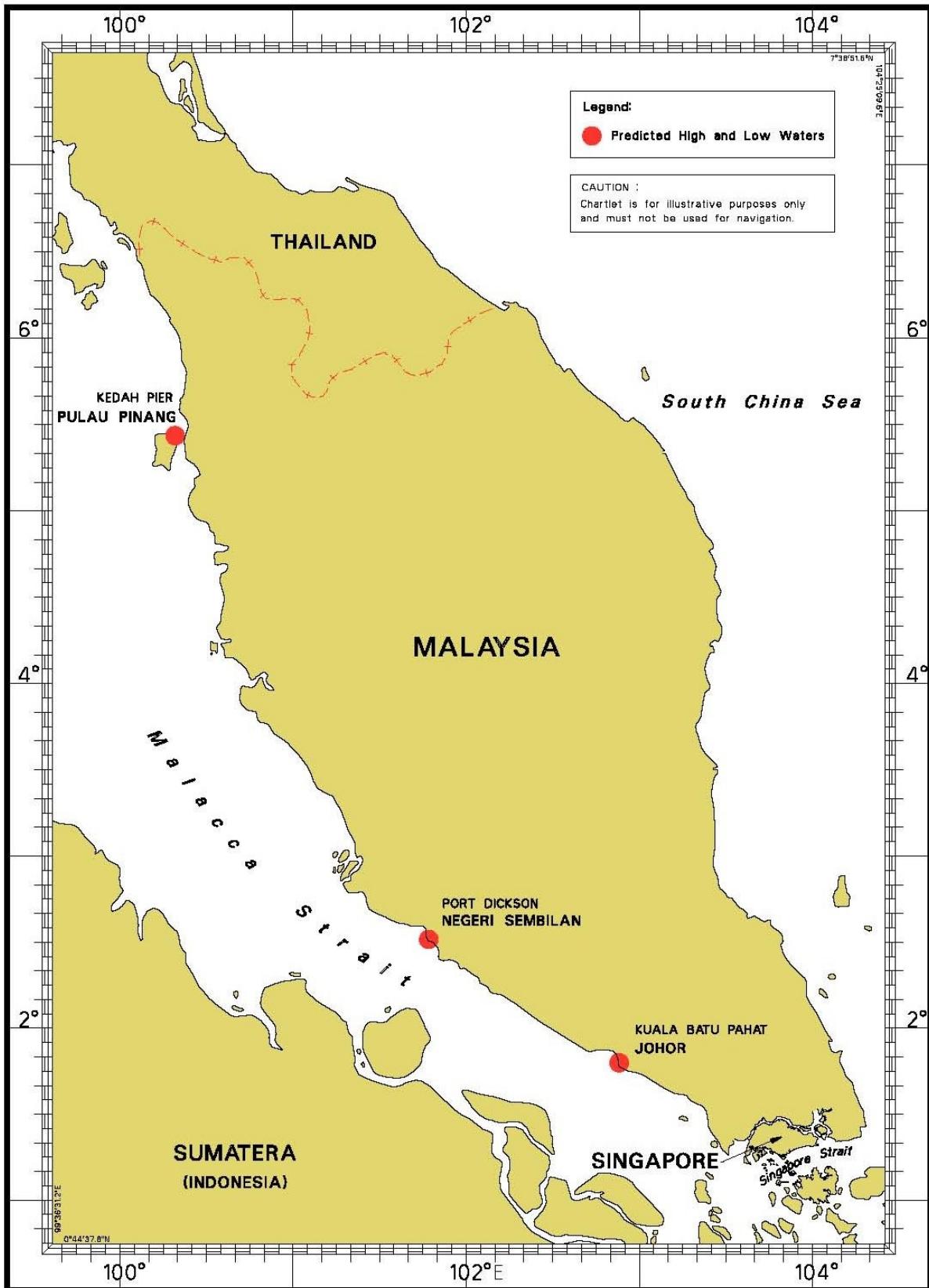


Tidal Prediction Stations in Straits of Malacca and Singapore



**II
NEW CHARTS AND PUBLICATIONS**

Tidal Prediction Stations In Malacca Strait




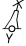
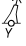


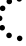
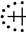
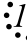
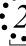
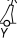
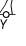
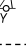
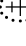
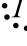

This publication can be purchased from any of the MPA appointed Chart Distributors.

Information on the MPA appointed Chart Distributors can be found from the following link:

<http://www.mpa.gov.sg/web/portal/home/publications/singapore-tide-tables>

II

NOTICES TO MARINERS AND CHART CORRECTIONS

GSP1/SP1	2 Ed 1/03/17 Last NM 80/2017	(Maritime and Port Authority of Singapore)		NM 88/2017
Insert	 Fl.Y.4s HY-W2		1° 18·59'N	104° 00·38'E
	 Fl.Y.4s HY-W3		1° 18·36'N	104° 00·79'E
	 Fl.Y.4s HY-W4		1° 18·44'N	104° 00·99'E
		(Maritime and Port Authority of Singapore)		NM 89/2017
Insert	 CC Fl.G.2s		1° 23·57'N	103° 59·12'E
		(Maritime and Port Authority of Singapore)		NM 90/2017
Delete	 Obstn		1° 24·16'N	103° 59·06'E
	 Obstn		1° 23·47'N	103° 59·87'E
<hr/>				
202	8 Ed 15/09/16 Last NM 82/2017	(Admiralty Notice No. 34/4243/2015)		NM 91/2017
Replace	 with  Wk		1° 27·99'N	104° 24·57'E
Delete	 Wk		1° 27·29'N	104° 24·61'E
<hr/>				
502	7 Ed 1/09/15 Last NM 80/2017	(Maritime and Port Authority of Singapore)		NM 88/2017
Insert	 Fl.Y.4s HY-W2		1° 18·59'N	104° 00·38'E
	 Fl.Y.4s HY-W3		1° 18·36'N	104° 00·79'E
	 Fl.Y.4s HY-W4		1° 18·44'N	104° 00·99'E
<hr/>				
503	5 Ed 15/08/14 Last NM 59/2017	(Admiralty Notice No. 34/4243/2015)		NM 91/2017
Replace	 with  Wk		1° 27·99'N	104° 24·57'E
Delete	 Wk		1° 27·29'N	104° 24·61'E
<hr/>				

II
TEMPORARY AND PRELIMINARY NOTICES

NIL

III NAVIGATIONAL INFORMATION

***(NM 92/2017) SINGAPORE PORT MARINE NOTICES/CIRCULARS**

The Port Marine Notices/Circulars shortlisted below would be of particular interest to Mariners. Details and complete list of Port Marine Notices/Circulars are available at this link:

<http://www.mpa.gov.sg/web/portal/home/port-of-singapore/circulars-and-notices>

PMN No.	Subject
120/2017	Update on the implementation of the Ballast Water Management Convention (BWMC), 2004
127/2017	Construction of jetties off Jurong Island Causeway
128/2017	Construction of temporary jetty and roll on roll off (RORO) ramp in Tuas View Basin and Tuas Staging Ground
PMC No.	Subject
10/2017	Oil spill response & vessel rates in Singapore
11/2017	Non renewal of bunkering licenses - Panoil Petroleum Pte Ltd and Universal Energy Pte Ltd
12/2017	Concessionary port due rates for (A) vessels carrying out repair works at MPA specified shipyards and (B) offshore support vessels without cargo operations at MPA specified offshore marine facilities

*Source: Maritime and Port Authority of Singapore

III
AMENDMENTS TO PUBLICATIONS

***(NM 93/2017) UPDATING OF PUBLICATION “SINGAPORE PORT INFORMATION 2016/2017”**

1. Page 40 and 41

REPORTING SECTORS

Eastern Sector

Delete the following:

Points	Positions		Remarks
	Latitude	Longitude	
1a	1°20·354'N	104°01·362'E	
1b	1°19·997'N	104°02·693'E	
1c	1°19·997'N	104°03·060'E	
1d	1°18·783'N	104°04·258'E	
1e	1°17·449'N	104°05·206'E	
1f	1°16·910'N	104°02·100'E	
1g	1°16·296'N	103°58·599'E	
1h	1°12·318'N	103°51·201'E	
1i	1°14·394'N	103°51·202'E	
1j	1°13·918'N	103°51·398'E	
1k	1°14·686'N	103°52·199'E	
1l	1°15·054'N	103°51·761'E	
1m	1°16·159'N	103°51·639'E	
	thence along the coastline		
1a	1°20·354'N	104°01·362'E	

Insert the following:

Points	Positions		Remarks
	Latitude	Longitude	
1a	1°20·354'N	104°01·362'E	
1b	1°19·997'N	104°02·693'E	
1c	1°19·997'N	104°03·060'E	
1d	1°18·783'N	104°04·258'E	
1e	1°17·449'N	104°05·206'E	
1f	1°16·910'N	104°02·100'E	
1g	1°16·296'N	103°58·599'E	
1h	1°12·396'N	103°51·397'E	
1i	1°12·898'N	103°50·963'E	
1j	1°13·337'N	103°50·587'E	

III
AMENDMENTS TO PUBLICATIONS

Eastern Sector (continued)

Insert the following:

Points	Positions		Remarks
	Latitude	Longitude	
1k	1°13·714'N	103°50·367'E	
1l	1°13·978'N	103°50·186'E	
1m	1°14·273'N	103°49·955'E	
	thence along the coastline		
1n	1°15·142'N	103°50·918'E	
1o	1°15·037'N	103°51·766'E	
1p	1°15·409'N	103°51·727'E	
1q	1°15·702'N	103°52·126'E	
1r	1°16·196'N	103°51·773'E	
	thence along the coastline		
1a	1°20·354'N	104°01·362'E	

Keppel Harbour Sector

Delete the following:

Points	Positions		Remarks
	Latitude	Longitude	
2a	1°16·159'N	103°51·639'E	
2b	1°15·054'N	103°51·761'E	
2c	1°14·686'N	103°52·199'E	
2d	1°13·918'N	103°51·398'E	
2e	1°15·105'N	103°50·908'E	
	thence along the coastline		
2a	1°16·159'N	103°51·639'E	

Insert the following:

Points	Positions		Remarks
	Latitude	Longitude	
2a	1°15·611'N	103°49·464'E	
2b	1°15·784'N	103°49·446'E	
	thence along the coastline		
2c	1°16·196'N	103°51·773'E	
2d	1°15·702'N	103°52·126'E	
2e	1°15·409'N	103°51·727'E	
2f	1°15·037'N	103°51·766'E	

III AMENDMENTS TO PUBLICATIONS

Keppel Harbour Sector (continued)

Insert the following:

Points	Positions		Remarks
	Latitude	Longitude	
2g	1°15-142'N	103°50-918'E	
2h	1°15-190'N	103°50-793'E	
2i	1°15-237'N	103°49-541'E	
2j	1°15-418'N	103°50-411'E	
	thence along the coastline		
2a	1°15-611'N	103°49-464'E	

Cruise Bay Sector

Delete the following:

Points	Positions		Remarks
	Latitude	Longitude	
3a	1°15-556'N	103°48-416'E	
3b	1°15-737'N	103°48-311'E	
	thence along the coastline		
3a	1°15-556'N	103°48-416'E	

Insert the following:

Points	Positions		Remarks
	Latitude	Longitude	
3a	1°15-594'N	103°48-425'E	
3b	1°15-756'N	103°48-323'E	
	thence along the coastline		
3a	1°15-594'N	103°48-425'E	

Western Sector

Delete the following:

Points	Positions		Remarks
	Latitude	Longitude	
4a	1°15-105'N	103°50-908'E	
4b	1°14-394'N	103°51-202'E	
4c	1°12-318'N	103°51-201'E	
4d	1°10-855'N	103°47-558'E	
4e	1°08-973'N	103°44-313'E	
4f	1°11-541'N	103°40-845'E	

III AMENDMENTS TO PUBLICATIONS

Western Sector (continued)

Delete the following:

Points	Positions		Remarks
	Latitude	Longitude	
4g	1°13·973'N	103°44·434'E	
4h	1°14·201'N	103°44·980'E	
4i	1°14·465'N	103°45·786'E	
4j	1°14·345'N	103°47·118'E	
4k	1°15·556'N	103°48·416'E	
	thence along the coastline		
4a	1°15·105'N	103°50·908'E	

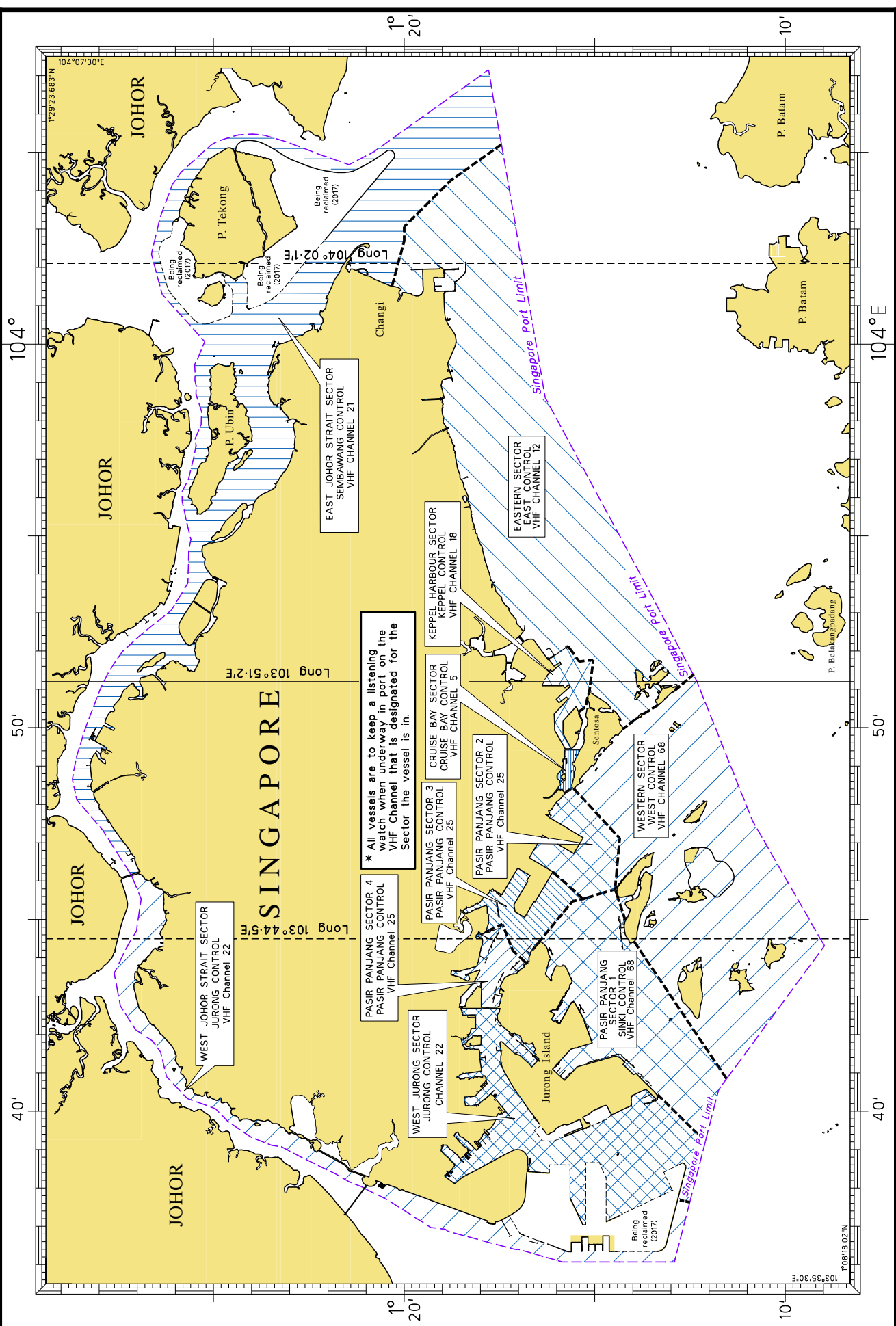
Insert the following:

Points	Positions		Remarks
	Latitude	Longitude	
4a	1°15·594'N	103°48·425'E	
	thence along the coastline		
4b	1°14·273'N	103°49·955'E	
4c	1°13·978'N	103°50·186'E	
4d	1°13·714'N	103°50·367'E	
4e	1°13·337'N	103°50·587'E	
4f	1°12·898'N	103°50·963'E	
4g	1°12·396'N	103°51·397'E	
	thence along the Singapore Port Limit		
4h	1°11·541'N	103°40·845'E	
4i	1°13·973'N	103°44·434'E	
	thence along the coastline		
4j	1°14·201'N	103°44·980'E	
4k	1°14·465'N	103°45·786'E	
4l	1°14·345'N	103°47·118'E	
4m	1°15·594'N	103°48·425'E	

2. Page 47

Replace chartlet on page 47 with the following:

REPORTING SECTORS



III AMENDMENTS TO PUBLICATIONS

CHARACTERISTICS OF AIDS TO NAVIGATION

3. Page 152

EASTERN APPROACHES TO JOHOR STRAIT (Cont/)

Insert the following:

Name Of Beacon/Buoy	Position Lat. N Long. E	Structure, Colour & Shape	Light Characteristic	Owner
CC Beacon	01°23-574' 103°59-123'	Green pillar with green conical topmark	Fl.G.2s	MPA

4. Page 157

CHANGI EAST

Insert the following:

Name Of Beacon/Buoy	Position Lat. N Long. E	Structure, Colour & Shape	Light Characteristic	Owner
HY-W2 Buoy	01°18-591' 104°00-382'	Yellow pillar with 'X' topmark	Fl.Y.4s (sync)	HDEC
HY-W3 Buoy	01°18-356' 104°00-789'	Yellow pillar with 'X' topmark	Fl.Y.4s (sync)	HDEC
HY-W4 Buoy	01°18-437' 104°00-985'	Yellow pillar with 'X' topmark	Fl.Y.4s (sync)	HDEC

*Source: Maritime and Port Authority of Singapore

IV REPRINT OF MARITIME SAFETY INFORMATION

The following Maritime Safety Information have been shortlisted, as they would be of particular interest to mariners.

TT175

VESSELS IN EAST JOHOR STRAIT ARE ADVISED TO NAVIGATE WITH PARTICULAR ALERTNESS AND CAUTION WHEN NEAR PROJECT AREAS OFF PULAU TEKONG, CHANGI AND MALANG PAPAN AS SHALLOW WATER AREA EXIST. VESSELS ARE REMINDED TO PROCEED AT SAFE SPEED AND MAINTAIN A PROPER LOOKOUT, PARTICULARLY FOR TUGS AND BARGES NAVIGATING NEAR THE PROJECT AREAS AND PASSENGER FERRIES CROSSING BETWEEN CHANGI AND PULAU TEKONG AND VICINITY OF PASIR GUDANG.

TT273

ALL VESSELS ARE ADVISED TO NAVIGATE WITH CAUTION, COMPLY WITH THE INTERNATIONAL COLLISION REGULATIONS AND MAINTAIN VHF RADIO WATCH AND LISTEN TO TRAFFIC INFORMATION WHEN NAVIGATING IN THE SINGAPORE STRAIT AND PORT WATERS. MARINERS ARE ALSO ADVISED TO KEEP A GOOD LOOKOUT OF FREQUENT FERRIES CROSSING THE SINGAPORE STRAIT.

TT363

MARINERS ARE REMINDED NOT TO ANCHOR IN ALL AREAS IN THE TSS OF THE STRAITS OF MALACCA AND SINGAPORE AS WELL AS BETWEEN THE LANDWARD LIMITS OF THE TSS AND APPROACHES TO THE PORTS. VESSELS ENTERING ANY PORT IN ANY LITTORAL STATES ARE TO ANCHOR IN THE ANCHORAGES DESIGNATED BY THE RESPECTIVE LITTORAL STATES ONLY.

TT389

NIPAH NORTH CARDINAL BEACON AT LATITUDE 01°10'40"N LONGITUDE 103°39'74"E IS REPORTED UNLIT.

TT398 (AMENDED 230440UTC JUN 2017)

A VESSEL HAD SUNK AT LOCATION LATITUDE 1°25'915"N LONGITUDE 104°27'389"E IN THE APPROACHES TO THE WEST BOUND LANE OF THE MIDDLE CHANNEL, NORTH EAST OFF HORSBURGH LIGHTHOUSE. THE LEAST DEPTH AT THE LOCATION IS 12.6M. AN AIS-EQUIPPED ISOLATED DANGER BUOY WITH LIGHT CHARACTERISTICS FL(2)10S HAS BEEN INSTALLED AT POSITION LATITUDE 1°26'224"N LONGITUDE 104°27'585"E IN THE APPROACHES TO THE WEST BOUND LANE OF THE MIDDLE CHANNEL.

AN UNAUTHORISED AND INAPPROPRIATELY POSITIONED ISOLATED DANGER BUOY WITH LIGHT CHARACTERISTICS FL(2)10S IS LOCATED AT POSITION LATITUDE 1°25'897"N LONGITUDE 104°27'391"E.

MARINERS ARE ADVISED TO NAVIGATE WITH CAUTION AND GIVE A WIDE BERTH.

TT399

VESSELS ARRIVING TO SINGAPORE OR TRANSITING THROUGH THE STRAIT ARE RECOMMENDED TO UPDATE THEIR DESTINATION ACCURATELY IN THE AIS TO ENHANCE SITUATION AWARENESS FOR OTHER TRAFFIC IN THE VICINITY, EXAMPLE TO INDICATE SG-PEBGB.

TT412

SAFE WATER MARK BUOY LFI.10S AT 1°03'03"N 103°39'00"E IS REPORTED UNLIT.

TT418

WEST BOUND DEEP DRAFT VESSELS AND VLCCS ARE REMINDED TO COMPLY WITH THE RULES OF VESSELS NAVIGATING THROUGH THE STRAITS OF MALACCA AND SINGAPORE (SOMS). THEY SHALL ALLOW FOR AN UKC OF AT LEAST 3.5 METRES AT ALL TIMES DURING THE ENTIRE PASSAGE THROUGH THE SOMS AND AS FAR AS IT IS SAFE & PRACTICABLE, PROCEED AT A SPEED OF NOT MORE THAN 12 KTS OVER THE GROUND IN THE WESTBOUND LANE OF THE SINGAPORE STRAIT (BETWEEN SOUTH OF ST JOHN'S ISLAND & RAFFLES LIGHTHOUSE.)

THEY ARE ADVISED TO BROADCAST, 8 HOURS BEFORE ENTERING THE TSS, NAVIGATIONAL INFORMATION GIVING NAME, DEADWEIGHT, DRAUGHT, SPEED AND TIMES OF PASSING HORSBURGH LIGHTHOUSE AND RAFFLES LIGHTHOUSE.

IV
REPRINT OF MARITIME SAFETY INFORMATION

TT425 (AMENDED 230914UTC)

BATU BERHENTI BUOY FL(2)5S WAS REMOVED FOR MAINTENANCE. VESSELS ADVISED TO NAVIGATE WITH CAUTION.

TT426

ALL MARINERS ARE REMINDED TO NAVIGATE WITH CAUTION IN THE PRECAUTIONARY AREAS OF THE SINGAPORE STRAIT TSS AND TO MAINTAIN A GOOD LOOKOUT FOR CROSSING TRAFFIC. VESSEL INTENDING TO CROSS THE TSS SHALL DO SO ONLY WHEN IT IS SAFE AND SHALL AT ALL TIMES COMPLY WITH THE COLLISION REGULATIONS

TT961

VESSELS INTENDING TO CROSS THE TRAFFIC SEPERATION SCHEME (TSS) OR PRECAUTIONARY AREAS IN THE SINGAPORE STRAIT DURING THE HOURS OF DARKNESS ARE RECOMMENDED TO DISPLAY THE NIGHT SIGNALS CONSISTING OF 3 ALL ROUND GREEN LIGHTS IN A VERTICAL LINE AS DETAILED IN THE MARITIME AND PORT AUTHORITY OF SINGAPORE'S PORT MARINE CIRCULAR, 04 OF 2013 DATED 7 MAY 2013.

SR123

SEA ROBBERIES ARE REPORTED IN THE SINGAPORE STRAIT. ALL VESSELS ARE REMINDED TO MAINTAIN A PROPER LOOK-OUT AND REPORT ANY SUSPICIOUS CRAFT TO VTIS SINGAPORE.

SR 399 (AMENDED 080420UTC)

REPORT OF PIRACY ATTACKI IN POSITION 2°03·55'N 104°59·28'E ON 07 SEPT 2017 AT 2103UTC. VESSELS PASSING THE VICINITY ARE REQUESTED TO MAINTAIN ANTI-PIRACY WATCH AND LOOK OUT FOR SUSPICIOUS FAST MOVING CRAFT APPROACHING THEIR VESSELS.

SR400

PAN PAN PAN

ALL SHIPS (AMENDED IN 130700UTC)

A VESSEL WAS REPORTED CAPSIZED IN POSITION LAT 1°11·1'N LONG 103°49·87'E ON 13 SEP 2017 AT ABOUT 0045LT. 03 PERSONS ARE REPORTED MISSING.

ALL VESSELS PASSING THE VICINITY ARE REQUESTED TO KEEP A SHARP LOOKOUT, RENDER NECESSARY ASSISTANCE AND REPORT ANY SIGHTINGS OF SURVIVORS TO SINGAPORE VTIS ON VHF CH14.

ISSUED BY SINGAPORE PORT OPERATIONS CONTROL CENTRE (as at 24th September 2017)

V
EXTRACT OF ADMIRALTY NOTICES TO MARINERS
FOR DUAL-BADGED CHARTS

These notices can also be accessed directly from UKHO Website:

<https://www.admiralty.co.uk/maritime-safety-information/admiralty-notices-to-mariners>

4118 SINGAPORE - Port of Singapore - East Jurong Channel - NM Block.

Source: Maritime and Port Authority of Singapore

Chart 4034 [previous update 3537/17] WGS84 DATUM

Insert the accompanying block, centred on: 1°17·4'N 103°43·7'E

4102 MALAYSIA - Peninsular Malaysia, East Coast - Johor - NM Block.

Source: ENC MY6B6129 and Maritime and Port Authority of Singapore

Chart 4043 [previous update 3985/17] WGS84 DATUM

Insert the accompanying block, centred on: 1°26·4'N 104°00·7'E

Chart 4044 [previous update 3985/17] WGS84 DATUM

Insert the accompanying block, centred on: 1°26·4'N 104°00·7'E

4130(P) SINGAPORE - Port of Singapore - East Jurong Channel - Dredged depths. Berth. Dredged area. Jetty.

Source: Maritime and Port Authority of Singapore

1.

	Update	Feature	Position
	Insert	limit of dredged area, pecked line, joining:	(a) 1°17·42'N 103°43·64'E (b) 1°17·34'N 103°43·77'E (c) 1°17·32'N 103°43·76'E (d) 1°17·39'N 103°43·63'E
		dredged depth, 14·1m , within: berth number, 22 jetty, single firm line, joining:	(a) - (d) above 1°17·35'N 103°43·74'E 1°17·38'N 103°43·62'E (existing jetty) 1°17·31'N 103°43·75'E
	Amend	dredged depth to, 15·2m , centred on: dredged depth to, 13·8m , centred on: dredged depth to, 15·0m , centred on: dredged depth to, 16·0m , centred on:	1°17·38'N 103°43·58'E 1°17·42'N 103°43·50'E 1°17·44'N 103°43·57'E 1°17·52'N 103°43·43'E

Chart affected - 8175

V
EXTRACT OF ADMIRALTY NOTICES TO MARINERS
FOR DUAL-BADGED CHARTS

4579 SINGAPORE STRAIT - Keppel Harbour - Outer Shoal and Marina South - Dredged depths. Obstruction.

Source: Maritime and Port Authority of Singapore

Chart 4037 [previous update 2929/17] WGS84 DATUM

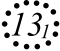
Amend	dredged depth to, 11·2m (2017) , centred on:	1°15·970'N	103°51·684'E
	dredged depth to, 11·5m (2017) , centred on:	1°15·922'N	103°51·604'E

Delete	 <i>Obstn</i>	1°14·993'N	103°51·818'E
--------	--	------------	--------------

Chart 4040 [previous update 4016/17] WGS84 DATUM

Delete	 <i>Obstn</i>	1°14·99'N	103°51·82'E
--------	--	-----------	-------------

Chart 4041 [previous update 3538/17] WGS84 DATUM

Delete	 <i>Obstn</i>	1°14·99'N	103°51·82'E
--------	--	-----------	-------------


4581 SINGAPORE - Serangoon Harbour - Automatic Identification Systems. Obstructions.

Source: Maritime and Port Authority of Singapore

Chart 4043 [previous update 4102/17] WGS84 DATUM

Insert	Automatic Identification System, AIS , at light-beacon	1°24·50'N	103°59·50'E
		1°22·97'N	103°57·92'E


Replace	 <i>Obstn</i> with  Obstn	1°23·50'N	103°58·27'E
---------	--	-----------	-------------

Delete	 <i>Obstn</i>	1°24·16'N	103°59·06'E
--------	--	-----------	-------------

	 <i>Obstn</i>	1°23·47'N	103°59·88'E
--	--	-----------	-------------

Chart 4044 (Panel A, Serangoon Harbour) [previous update 4102/17] WGS84 DATUM

Insert	Automatic Identification System, AIS , at light-beacon	1°24·496'N	103°59·498'E
		1°22·974'N	103°57·915'E





Replace	 <i>Obstn</i> with  Obstn	1°23·498'N	103°58·266'E
---------	--	------------	--------------

Delete	 <i>Obstn</i>	1°24·147'N	103°59·078'E
--------	--	------------	--------------

V
EXTRACT OF ADMIRALTY NOTICES TO MARINERS
FOR DUAL-BADGED CHARTS

4581 SINGAPORE - Serangoon Harbour - Automatic Identification Systems. Obstructions. (continued)

Chart 4044 [previous update 4102/17] WGS84 DATUM

Insert	Automatic Identification System, AIS , at light-beacon	1°24·50'N 1°22·97'N	103°59·50'E 103°57·92'E
Replace	 <i>Obstn</i> with  <i>Obstn</i>	1°23·50'N	103°58·27'E
Delete	 <i>Obstn</i>	1°24·16'N	103°59·06'E
	 <i>Obstn</i>	1°23·47'N	103°59·88'E

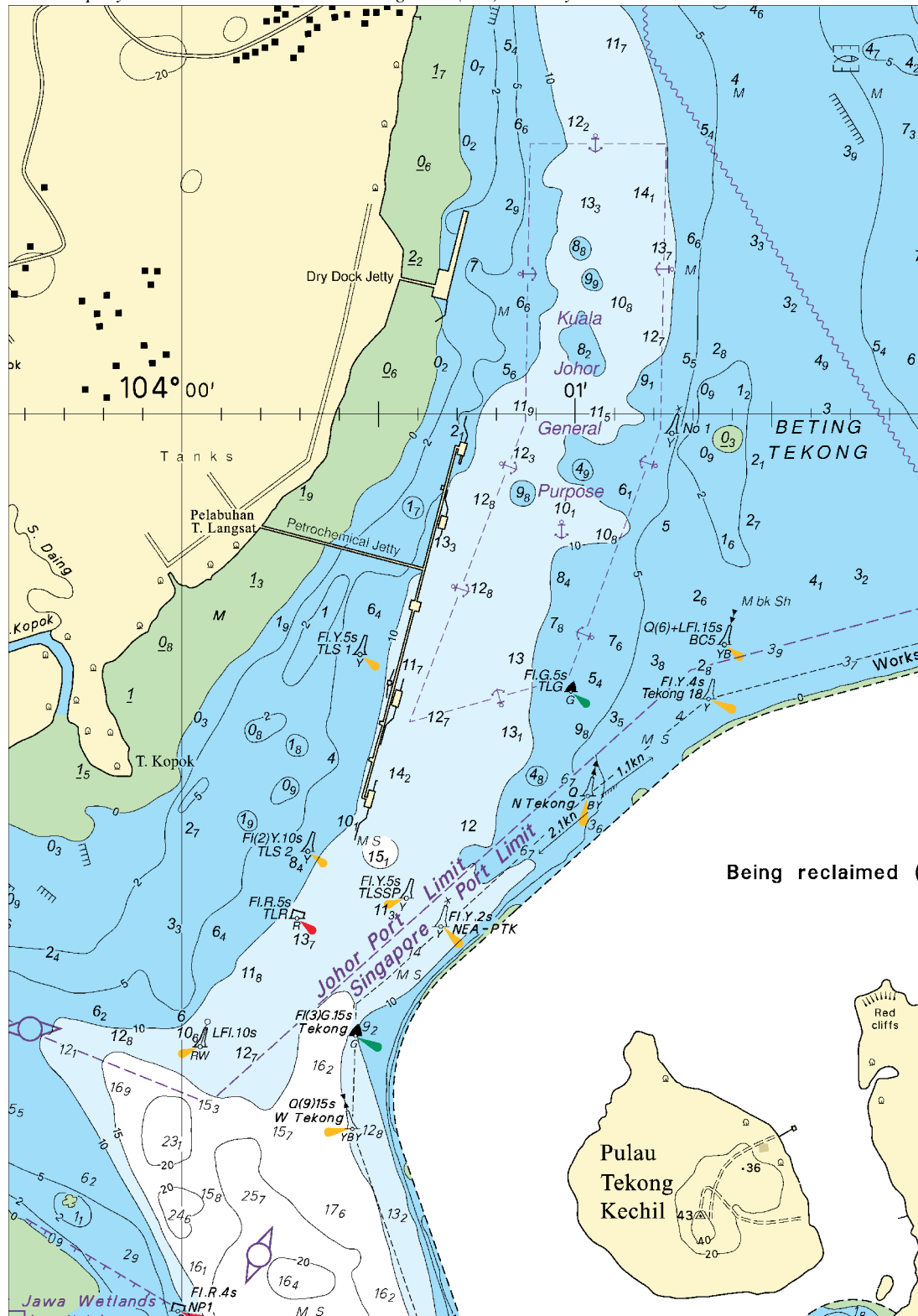
4587(P) SINGAPORE - Keppel Harbour - Marina South - Dredged depths.

Source: Maritime and Port Authority of Singapore

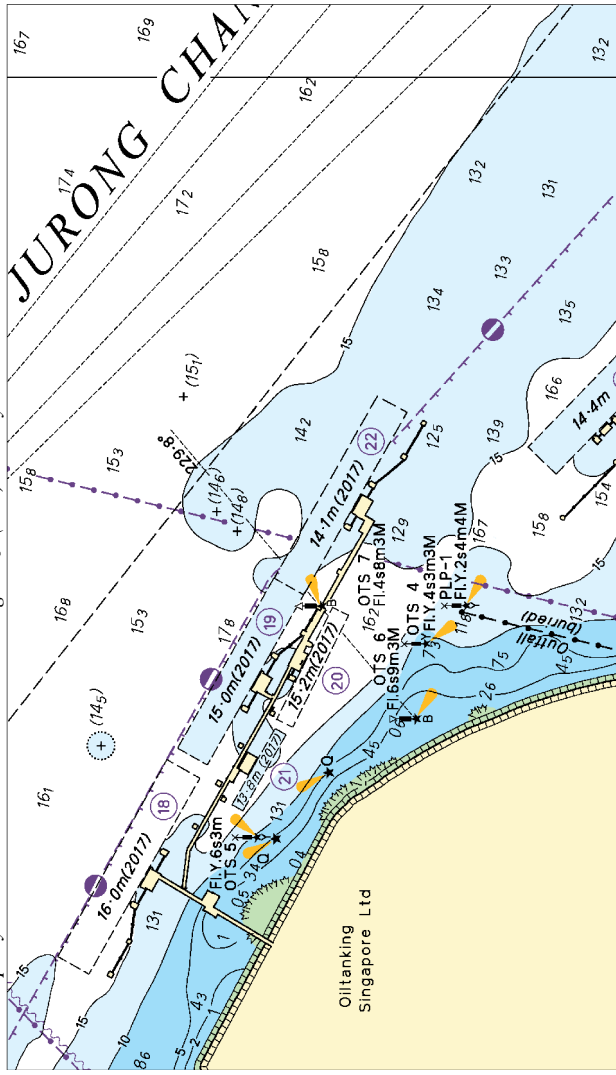
1.	Update	Feature	Position
	Amend	dredged depth to, 11·2m (2017) , centred on: dredged depth to, 11·5m (2017) , centred on:	1°15·98'N 103°51·68'E 1°15·93'N 103°51·60'E

Charts affected - 8177

Updated to Admiralty Notices to Mariners No. 39 of 2017 dated 28th September 2017



To accompany Notice to Mariners 4118/17. Image Size (mm) 80.9 by 140.9



Block for Chart No 4034

HYDROGRAPHIC NOTE - Instructions

1. Mariners are requested to notify the Chief Hydrographer, Maritime and Port Authority of Singapore, when new or suspected dangers to navigation are discovered, changes are observed in aids to navigation or where corrections to nautical publications may be necessary. Reports, which cannot be confirmed or are lacking in certain details should not be withheld.
2. Any ambiguities of time, positioning and depth should be stressed and any firm expectation of being able to check the information provided on a following voyage should be mentioned.
3. Mariners using satellite position fixing systems, eg. GPS, should provide details of equipment and datum used (where applicable). Where bearings (true or magnetic) are taken visually or by radar to fix a position, it should include more than two objects in order to provide a check on its accuracy. A position may also be defined by bearing and distance from a conspicuous object eg. beacon, lighthouse etc.
4. The note should include a tracing or a digital image of the chart used and the details should be clearly marked.
5. Echo sounders frequently register greater depths than the advertised maximum depth for the equipment, eg. a trace appearing at 50 metres may be in fact be 550 metres or even 1050 metres for equipment whose maximum depth is 500 metres. Erroneous depths caused by 2nd transmission error can usually be recognised by the following:
 - (a) the tracing being weaker than normal for the depth registered,
 - (b) the trace appearing to pass through the transmission line,
 - (c) the feathery nature of the trace.
6. Upon receipt of a hydrographic note, a Notice to Mariners may be issued. The sender's vessel or name is quoted as the source unless the same information is also received in foreign Notices to Mariners.
7. Reports of shoals, uncharted dangers and defects in aids to navigation may also be made to the appropriate Singapore Port Operations Control Centre on VHF Channels 10, 12, 14, 68 or 73.

HYDROGRAPHIC NOTE

To:

Chief Hydrographer
Maritime and Port Authority of Singapore
7B Keppel Road #20-00 Tanjong Pagar Complex
Singapore 089055

Tel : (65) 6325 2027
Fax : (65) 6226 1076
Email : hydrographic@mpa.gov.sg

Sender's Contact Details :

Date :

Name of Vessel :

Address of Sender :

Tel : Fax :

Email :

Nature of Observation :

General Location :

Subject :

Position : Lat. Long.

Charts Used :

Date & Time of Observation :

Details :

Attachment :

Equipment Used :

Type of Position Fixing : GPS / DGPS Others :

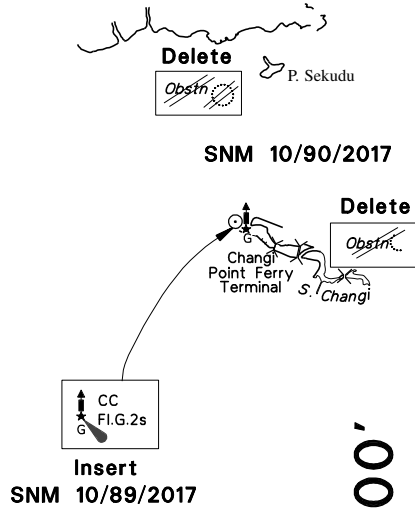
Type of Echo Sounder :

Name and Signature :

Ship's/Company's Stamp :

NOTICES TO MARINERS TRACINGS

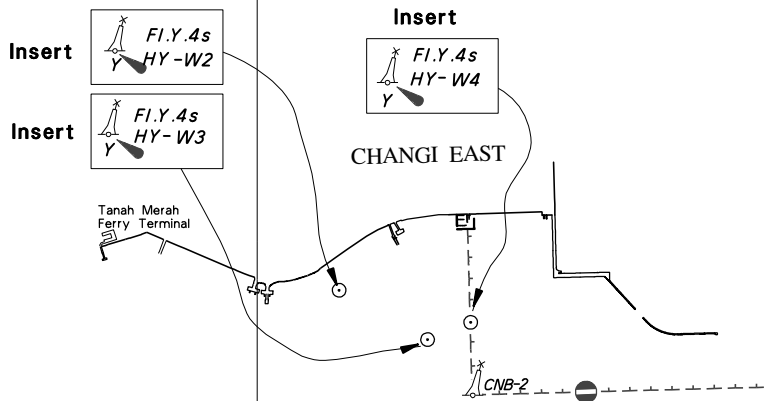
1°25'



104° 00'

1°20'

SNM 10/88/2017



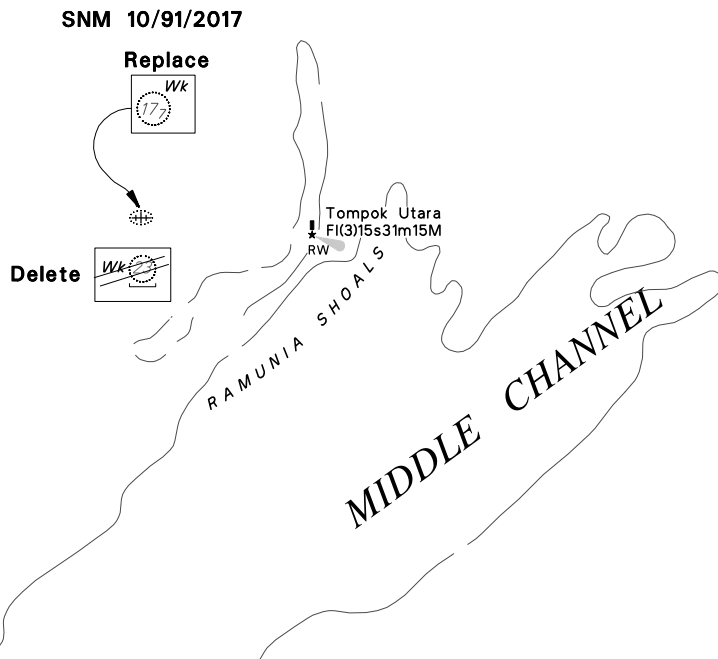
CORRECTION NO.	SNM EDN NO.	LAST CORR NO.	CHART NO.	Location on Chart		
						X
88, 89, 90	10/2017	80/2017	GSP1/SP1			

Caution: some computer printers might distort the tracings.
Users are advised to check and, if necessary, adjust settings on the printer

NOTICES TO MARINERS TRACINGS

1°40'

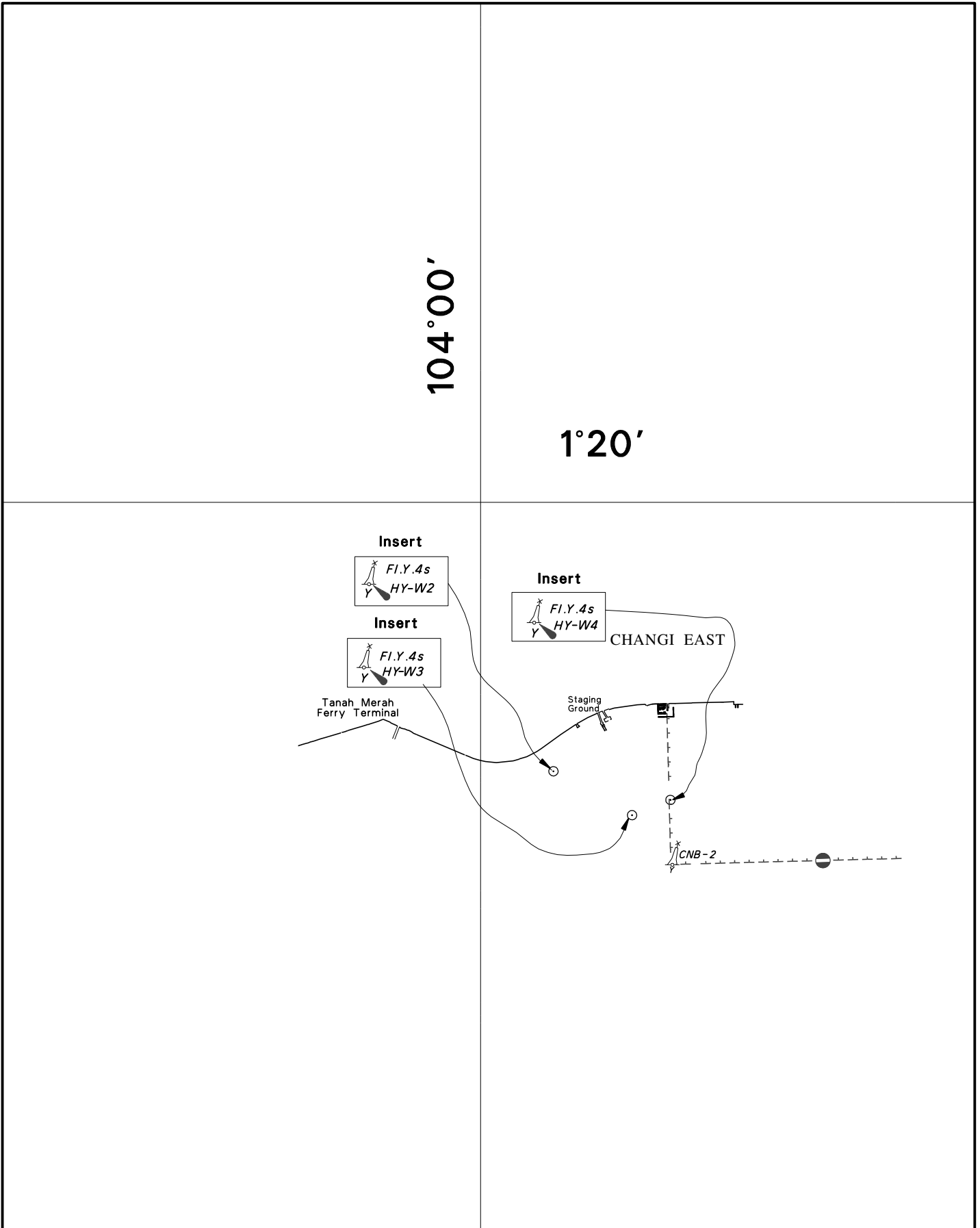
104°40'



CORRECTION NO.	SNM EDN NO.	LAST CORR NO.	CHART NO.	Location on Chart		
91	10/2017	82/2017	202			X

Caution: some computer printers might distort the tracings.
Users are advised to check and, if necessary, adjust settings on the printer

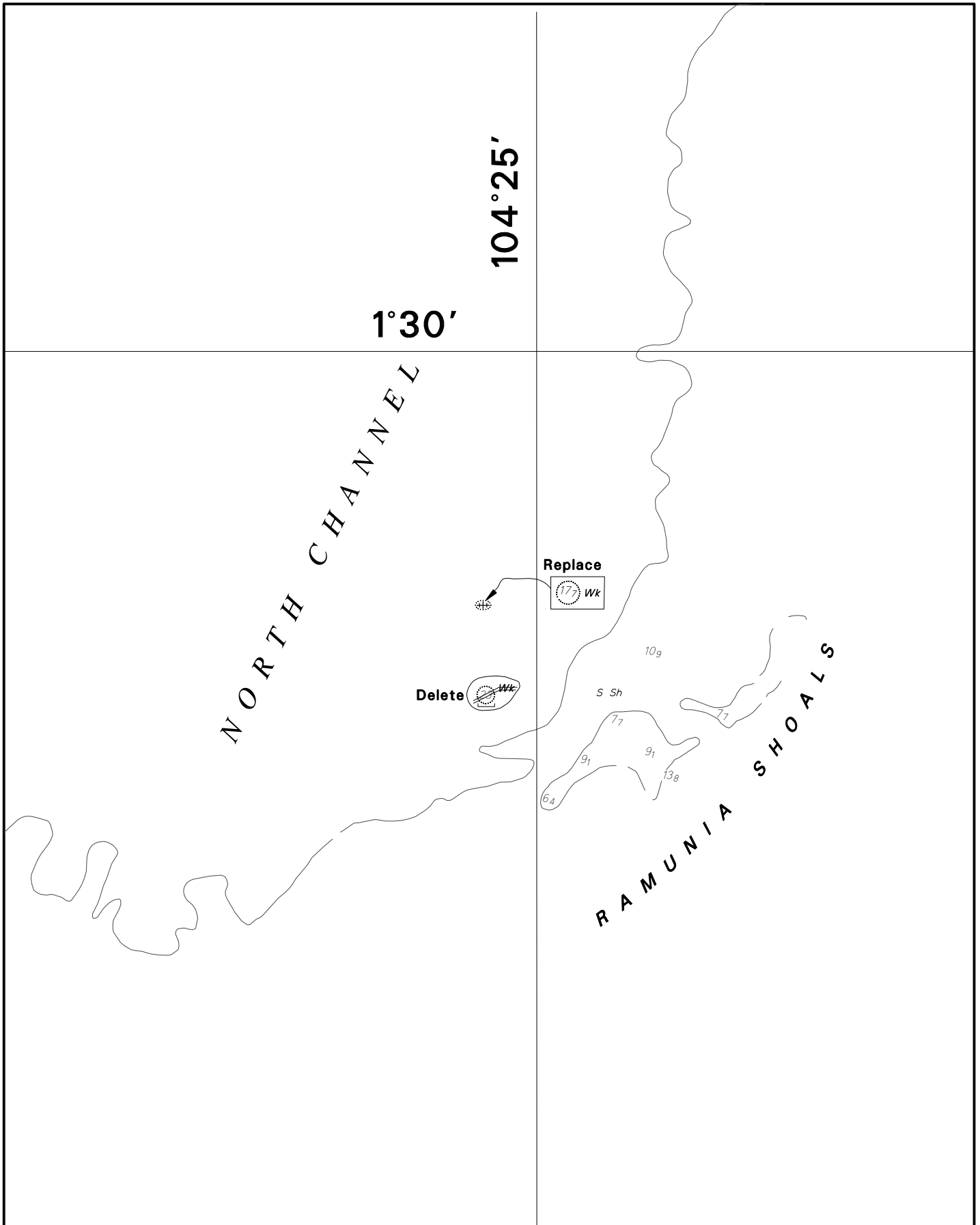
NOTICES TO MARINERS TRACINGS



CORRECTION NO.	SNM EDN NO.	LAST CORRNO NO.	CHART NO.	Location on Chart		
88	10/2017	80/2017	502	X		

Caution: some computer printers might distort the tracings.
 Users are advised to check and, if necessary, adjust settings on the printer

NOTICES TO MARINERS TRACINGS



CORRECTION NO.	SNM EDN NO.	LAST CORR NO.	CHART NO.	Location on Chart		
					X	
91	10/2017	59/2017	503			

Caution: some computer printers might distort the tracings.
 Users are advised to check and, if necessary, adjust settings on the printer