



## SINGAPOREAN NOTICES TO MARINERS

SECTION	CONTENT	Page
I	Affected Charts & Publications	1
II	New Charts & Publications	3
	Notices to Mariners and Chart Corrections	13
	Temporary and Preliminary Notices	14
III	Navigational Information	15
	Amendments to Publications	16
IV	Reprint of Maritime Safety Information	20
V	Extract of Admiralty Notices to Mariners for Dual-Badged Charts	22

The monthly Notices to Mariners contain information required to keep charts and publications published by the Hydrographic Department, Maritime and Port Authority of Singapore up-to-date.

Mariners are requested to notify the Chief Hydrographer, Maritime and Port Authority of Singapore, immediately of the discovery of new or suspected dangers to navigation, observed changes to aids to navigation and ways Singaporean Charts and Publications can be improved. The Hydrographic Note on the back page should be used for this purpose.

Detailed information of charts and publications (coverage of charts, latest editions and distributors) are available on the Maritime and Port Authority Website: [www.mpa.gov.sg](http://www.mpa.gov.sg)

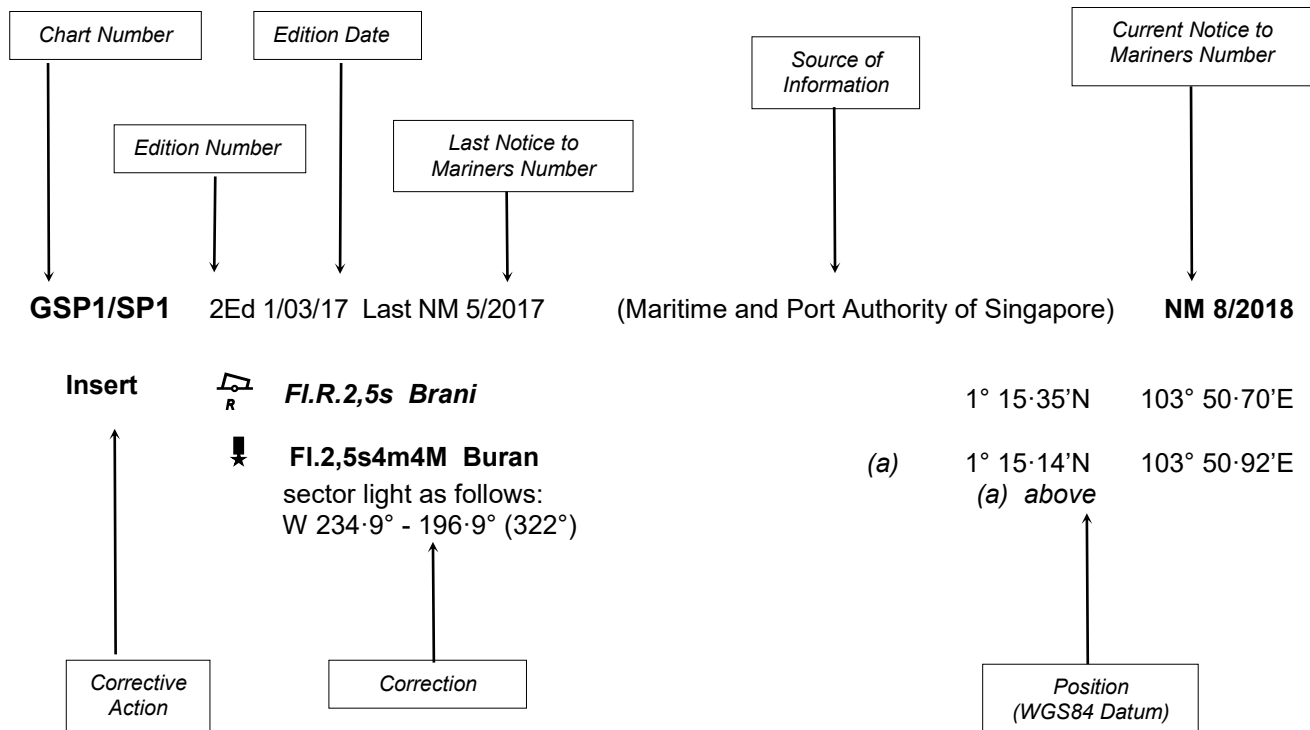
- [Singaporean Notice to Mariners](#)
- [Singaporean Charts](#)
- [Dual-Badged Charts](#)
- [Singapore ENC](#)
- [Malacca and Singapore Straits ENC](#)
- [Singapore Port Information](#)
- [Singapore Tide Tables](#)

### Contact information:

Hydrographic Department  
Maritime and Port Authority of Singapore  
7B Keppel Road  
#20-00 Tanjong Pagar Complex  
Singapore 089055  
Tel : (65) 6325 2027  
Fax : (65) 6226 1076  
Email : [hydrographic@mpa.gov.sg](mailto:hydrographic@mpa.gov.sg)

## EXPLANATION OF FORMAT

The elements of a typical chart correction are explained below.



### Notes:

- Notice to Mariners number followed by:  
**T** indicates a Temporary Notice (eg. **NM 9T/2018**).  
**P** indicates a Preliminary Notice (eg. **NM 10P/2018**).
- Bearings are true reckoned clockwise from 000° to 359°; those relating to lights are from seaward.
- Heights and elevations are above Mean High Water Springs.

I  
**AFFECTED CHARTS AND PUBLICATIONS**

**INDEX OF AFFECTED CHARTS**

DESCRIPTION	NOTICE NO.	PAGE NO.
New Charts and Publications	-	3 to 12
Singaporean Chart GSP1/SP1	*79, 80	13
Singaporean Chart 202	*81, 82	13
Singaporean Chart 502	80	13
Temporary and Preliminary Notices	-	14
Singapore Port Marine Notices/Circulars	*83	15
Amendments to Publications	*84, *85, *86	16 to 19
Reprint of Maritime Safety Information	-	20, 21
Extract of Admiralty Notices to Mariners for Dual-Badged Charts	-	22

\*Source: Maritime and Port Authority of Singapore

I  
**AFFECTED CHARTS AND PUBLICATIONS**

**INDEX OF NOTICES**

<b>NOTICE NO.</b>	<b>DESCRIPTION</b>	<b>PAGE NO.</b>
-	New Charts and Publications	3 to 12
*79, 80	Singaporean Chart GSP1/SP1	13
*81, 82	Singaporean Chart 202	13
80	Singaporean Chart 502	13
-	Temporary and Preliminary Notices	14
*83	Singapore Port Marine Notices/Circulars	15
*84, *85, *86	Amendments to Publications	16 to 19
-	Reprint of Maritime Safety Information	20, 21
-	Extract of Admiralty Notices to Mariners for Dual-Badged Charts	22

\*Source: Maritime and Port Authority of Singapore

## II NEW CHARTS AND PUBLICATIONS

### NEW EDITION DUAL BADGED CHARTS PUBLISHED ON 20<sup>TH</sup> SEPTEMBER 2018

<b>Chart Number</b>	:	4030
<b>Title</b>	:	Port of Singapore West Jurong Anchorages and Temasek Fairway
<b>Coverage</b>	:	Lat 01° 11·05' N      01° 17·00' N Long 103° 36·70' E      103° 40·70' E
<b>Scale</b>	:	1 : 10 000
<b>Date Published</b>	:	20 <sup>th</sup> September 2018
<b>Size of Chart</b>	:	742.0 x 1096.5 mm
<b>Description</b>	:	This new edition includes updated submarine cables, bathymetry and topography details covering West Jurong Anchorages and Temasek Fairway.  The existing chart of the same number published on 2 <sup>nd</sup> March 2017 has been superseded.

---

<b>Chart Number</b>	:	4031
<b>Title</b>	:	Port of Singapore Western Approaches to Jurong Island
<b>Coverage</b>	:	Lat 01° 10·15' N      01° 16·12' N Long 103° 38·50' E      103° 42·53' E
<b>Scale</b>	:	1 : 10 000
<b>Date Published</b>	:	20 <sup>th</sup> September 2018
<b>Size of Chart</b>	:	747.5 x 1100.2 mm
<b>Description</b>	:	This new edition includes updated submarine cables, bathymetry and topography details covering Western Approaches to Jurong Island.  The existing chart of the same number published on 2 <sup>nd</sup> March 2017 has been superseded.

---

## II NEW CHARTS AND PUBLICATIONS

### NEW EDITION DUAL BADGED CHARTS PUBLISHED ON 20<sup>TH</sup> SEPTEMBER 2018

<b>Chart Number</b>	:	4032
<b>Title</b>	:	Port of Singapore Sinki Fairway
<b>Coverage</b>	:	Lat 01° 12·25' N      01° 16·30' N Long 103° 40·20' E      103° 46·13' E
<b>Scale</b>	:	1 : 10 000
<b>Date Published</b>	:	20 <sup>th</sup> September 2018
<b>Size of Chart</b>	:	1100.0 x 746.4 mm
<b>Description</b>	:	This new edition includes updated submarine cables, bathymetry and topography details covering Sinki Fairway.  The existing chart of the same number published on 4 <sup>th</sup> August 2016 has been superseded.

---

<b>Chart Number</b>	:	4033
<b>Title</b>	:	Port of Singapore Tuas Bay, West Jurong Channel and Pesek Basin
<b>Coverage</b>	:	Lat 01° 15·00' N      01° 19·05' N Long 103° 36·80' E      103° 42·70' E
<b>Scale</b>	:	1 : 10 000
<b>Date Published</b>	:	20 <sup>th</sup> September 2018
<b>Size of Chart</b>	:	1094.4 x 746.4 mm
<b>Description</b>	:	This new edition includes updated submarine cables, bathymetry and topography details covering Tuas Bay, West Jurong Channel and Pesek Basin.  The existing chart of the same number published on 17 <sup>th</sup> March 2016 has been superseded.

---

## II NEW CHARTS AND PUBLICATIONS

### NEW EDITION DUAL BADGED CHARTS PUBLISHED ON 20<sup>TH</sup> SEPTEMBER 2018

<b>Chart Number</b>	:	4034
<b>Title</b>	:	Port of Singapore East Jurong Channel, Pasir Panjang Terminal and West Keppel Fairway
<b>Coverage</b>	:	Lat 01° 14·50' N      01° 18·55' N Long 103° 42·70' E      103° 48·60' E
<b>Scale</b>	:	1 : 10 000
<b>Date Published</b>	:	20 <sup>th</sup> September 2018
<b>Size of Chart</b>	:	1094.3 x 746.3 mm
<b>Description</b>	:	This new edition includes updated submarine cables, bathymetry and topography details covering East Jurong Channel, Pasir Panjang Terminal and West Keppel Fairway.  The existing chart of the same number published on 4 <sup>th</sup> August 2016 has been superseded.

---

<b>Chart Number</b>	:	4035
<b>Title</b>	:	Port of Singapore Western Anchorages, Jong Fairway and Cruise Bay
<b>Coverage</b>	:	Lat 01° 10·90' N      01° 16·90' N Long 103° 45·50' E      103° 49·54' E
<b>Scale</b>	:	1 : 10 000
<b>Date Published</b>	:	20 <sup>th</sup> September 2018
<b>Size of Chart</b>	:	749.4 x 1105.7 mm
<b>Description</b>	:	This new edition includes updated submarine cables, bathymetry and topography details covering Western Anchorage, Jong Fairway and Cruise Bay.  The existing chart of the same number published on 6 <sup>th</sup> April 2017 has been superseded.

---

## II NEW CHARTS AND PUBLICATIONS

### NEW EDITION DUAL BADGED CHARTS PUBLISHED ON 20<sup>TH</sup> SEPTEMBER 2018

<b>Chart Number</b>	:	4036
<b>Title</b>	:	Port of Singapore Raffles Lighthouse to The Sisters
<b>Coverage</b>	:	Lat 01° 09·40' N      01° 13·47' N Long 103° 44·20' E      103° 50·13' E
<b>Scale</b>	:	1 : 10 000
<b>Date Published</b>	:	20 <sup>th</sup> September 2018
<b>Size of Chart</b>	:	1100.0 x 750.1 mm
<b>Description</b>	:	This new edition includes updated submarine cables, bathymetry and topography details covering Raffles Lighthouse to The Sisters.
		The existing chart of the same number published on 6 <sup>th</sup> April 2017 has been superseded.

---

<b>Chart Number</b>	:	4037
<b>Title</b>	:	Port of Singapore Keppel Harbour, Tanjong Pagar Terminal and Approaches
<b>Coverage</b>	:	Lat 01° 12·52' N      01° 16·59' N Long 103° 49·40' E      103° 55·34' E
<b>Scale</b>	:	1 : 10 000
<b>Date Published</b>	:	20 <sup>th</sup> September 2018
<b>Size of Chart</b>	:	747.5 x 1100.2 mm
<b>Description</b>	:	This new edition includes updated submarine cables, bathymetry and topography details covering Keppel Harbour, Tanjong Pagar Terminal and Approaches.
		The existing chart of the same number published on 6 <sup>th</sup> April 2017 has been superseded.

---

## II NEW CHARTS AND PUBLICATIONS

### NEW EDITION SINGAPORE ENC RELEASED ON 20<sup>TH</sup> SEPTEMBER 2018

<b>ENC Name</b>	:	SG5C4030
<b>Location</b>	:	West Jurong Anchorages and Temasek Fairway
<b>Coverage</b>	:	Lat 01° 11·050' N      01° 16·300' N Long 103° 36·700' E      103° 40·640' E
<b>Compilation Scale</b>	:	1 : 8 000
<b>Date Released</b>	:	20 <sup>th</sup> September 2018
<b>Description</b>	:	This new edition includes updated submarine cables, bathymetry and topography details covering West Jurong Anchorages and Temasek Fairway.  The existing cell of the same name released on 2 <sup>nd</sup> March 2017 has been superseded.

<b>ENC Name</b>	:	SG5C4031
<b>Location</b>	:	Western Approaches to Jurong Island
<b>Coverage</b>	:	Lat 01° 10·150' N      01° 12·250' N Long 103° 38·500' E      103° 42·530' E
<b>Compilation Scale</b>	:	1 : 8 000
<b>Date Released</b>	:	20 <sup>th</sup> September 2018
<b>Description</b>	:	This new edition includes updated submarine cables, bathymetry and topography details covering Western Approaches to Jurong Island.  The existing cell of the same name released on 17 <sup>th</sup> March 2016 has been superseded.

<b>ENC Name</b>	:	SG5C4032
<b>Location</b>	:	Sinki Fairway
<b>Coverage</b>	:	Lat 01° 12·250' N      01° 16·300' N Long 103° 40·640' E      103° 45·580' E
<b>Compilation Scale</b>	:	1 : 8 000
<b>Date Released</b>	:	20 <sup>th</sup> September 2018
<b>Description</b>	:	This new edition includes updated submarine cables, bathymetry and topography details covering Sinki Fairway.  The existing cell of the same name released on 4 <sup>th</sup> August 2016 has been superseded.

## II NEW CHARTS AND PUBLICATIONS

### NEW EDITION SINGAPORE ENC RELEASED ON 20<sup>TH</sup> SEPTEMBER 2018

<b>ENC Name</b>	:	SG5C4033
<b>Location</b>	:	Tuas Bay, West Jurong Channel and Pesek Basin
<b>Coverage</b>	:	Lat 01° 16·300' N      01° 19·050' N Long 103° 38·000' E      103° 42·700' E
<b>Compilation Scale</b>	:	1 : 8 000
<b>Date Released</b>	:	20 <sup>th</sup> September 2018
<b>Description</b>	:	This new edition includes updated submarine cables, bathymetry and topography details covering Tuas Bay, West Jurong Channel and Pesek Basin.  The existing cell of the same name released on 17 <sup>th</sup> March 2016 has been superseded.

<b>ENC Name</b>	:	SG5C4034
<b>Location</b>	:	East Jurong Channel, Pasir Panjang Terminal and West Keppel Fairway
<b>Coverage</b>	:	Lat 01° 16·300' N      01° 18·550' N Long 103° 42·700' E      103° 46·360' E
<b>Compilation Scale</b>	:	1 : 8 000
<b>Date Released</b>	:	20 <sup>th</sup> September 2018
<b>Description</b>	:	This new edition includes updated submarine cables, bathymetry and topography details covering East Jurong Channel, Pasir Panjang Terminal and West Keppel Fairway.  The existing cell of the same name released on 4 <sup>th</sup> August 2016 has been superseded.

<b>ENC Name</b>	:	SG5C4035
<b>Location</b>	:	West Jurong Anchorages, Jong Fairway and Cruise Bay
<b>Coverage</b>	:	Lat 01° 10·900' N      01° 16·900' N Long 103° 45·580' E      103° 49·425' E
<b>Compilation Scale</b>	:	1 : 8 000
<b>Date Released</b>	:	20 <sup>th</sup> September 2018
<b>Description</b>	:	This new edition includes updated submarine cables, bathymetry and topography details covering West Jurong Anchorages, Jong Fairway and Cruise Bay.  The existing cell of the same name released on 6 <sup>th</sup> April 2017 has been superseded.

## II NEW CHARTS AND PUBLICATIONS

### NEW EDITION SINGAPORE ENC RELEASED ON 20<sup>TH</sup> SEPTEMBER 2018

<b>ENC Name</b>	:	SG5C4036
<b>Location</b>	:	Raffles Lighthouse to The Sisters
<b>Coverage</b>	:	Lat 01° 09·400' N      01° 12·520' N Long 103° 44·200' E      103° 50·130' E
<b>Compilation Scale</b>	:	1 : 8 000
<b>Date Released</b>	:	20 <sup>th</sup> September 2018
<b>Description</b>	:	This new edition includes updated submarine cables, bathymetry and topography details covering Raffles Lighthouse to The Sisters.  The existing cell of the same name released on 6 <sup>th</sup> April 2017 has been superseded.

---

<b>ENC Name</b>	:	SG5C4037
<b>Location</b>	:	Keppel Harbour, Tanjong Pagar Terminal and Approaches
<b>Coverage</b>	:	Lat 01° 12·520' N      01° 16·590' N Long 103° 49·425' E      103° 55·340' E
<b>Compilation Scale</b>	:	1 : 8 000
<b>Date Released</b>	:	20 <sup>th</sup> September 2018
<b>Description</b>	:	This new edition includes updated submarine cables, bathymetry and topography details covering Keppel Harbour, Tanjong Pagar Terminal and Approaches.  The existing cell of the same name released on 6 <sup>th</sup> April 2017 has been superseded.

---

## II NEW CHARTS AND PUBLICATIONS

### SINGAPORE TIDE TABLES YEAR 2019 PUBLISHED ON 15<sup>TH</sup> SEPTEMBER 2018

#### Summary of Publication

This publication contains Tidal Height and Tidal Stream Predictions covering stations in Singapore Port Waters and along the Straits of Malacca and Singapore.

This publication consists of 5 segments.



**1. High and Low Water Predictions** at the following stations:

- a) Tanjong Pagar
- b) Sembawang

**2. Hourly Tidal Height Predictions** at the following stations:

- a) West Tuas
- b) Sultan Shoal Lighthouse
- c) Raffles Lighthouse
- d) West Coast
- e) Bukom
- f) Tanjong Pagar
- g) Tanah Merah
- h) Tanjong Changi
- i) Sembawang
- j) Singapore Strait - Horsburgh Lighthouse

**3. Hourly Tidal Stream Predictions** at the following stations:

- a) Main Strait - off Tuas View
- b) Sinki Fairway - Banyan
- c) Jong Fairway - off Sisters Buoy
- d) Main Strait - off Shell SBM Buoy
- e) Sentosa - off Cruise Bay
- f) East Buran
- g) Main Strait - Eastern Petroleum A
- h) Kuala Johor - off Malang Tiga

**4. Maximum and Slack Tidal Stream Predictions** at the following stations:

- a) Malacca Strait - off Pulau Iyu Kecil Light
- b) Singapore Strait - Selat Phillip
- c) Singapore Strait - Karang Banteng (Buffalo Rock)
- d) Singapore Strait - Horsburgh Lighthouse

**5. Malacca Strait - High and Low Water Predictions** at the following stations:

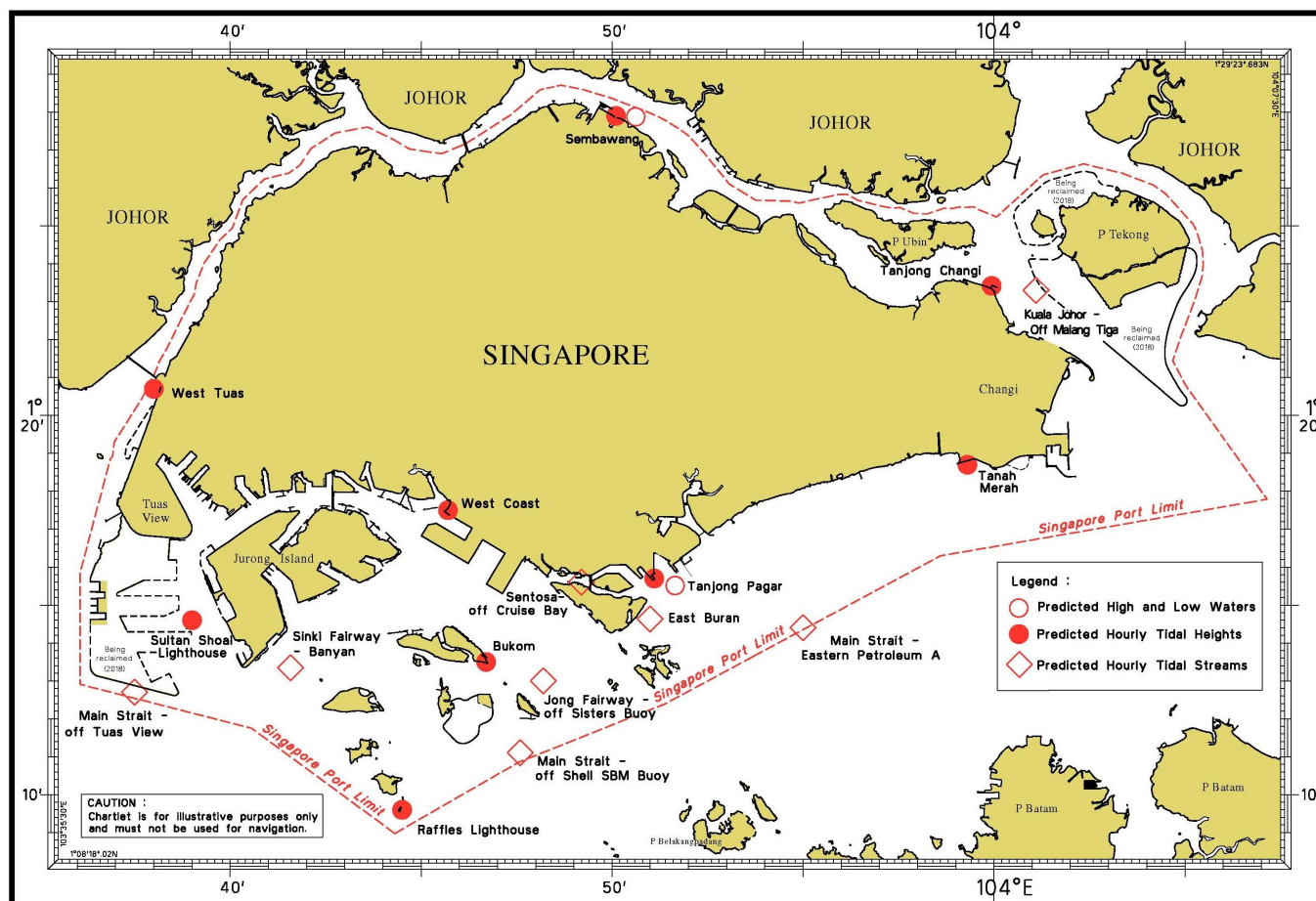
- a) Kedah Pier, Pulau Pinang
- b) Port Dickson
- c) Kuala Batu Pahat

The locations of the above stations are shown in the chartlets below:

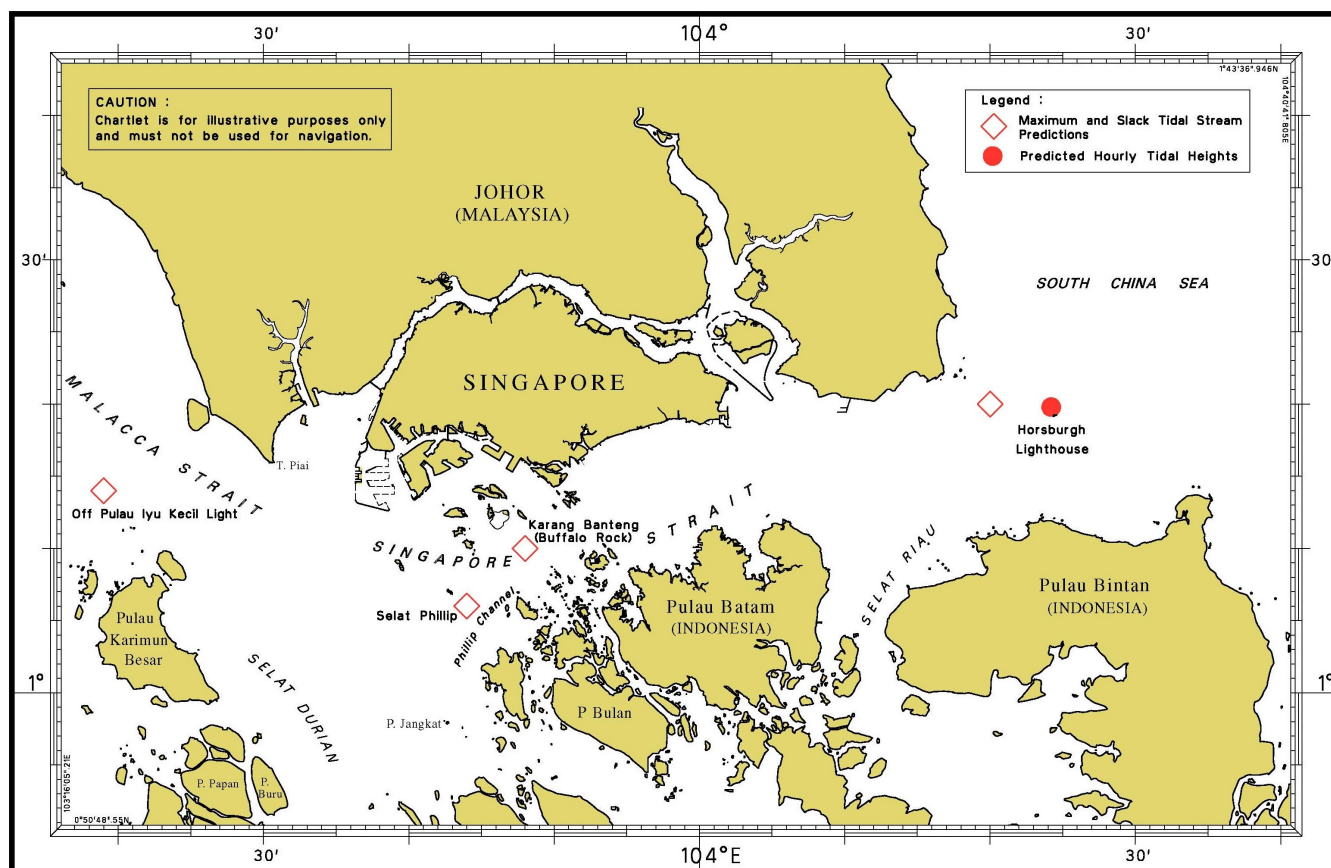
## II

## NEW CHARTS AND PUBLICATIONS

## Tidal Prediction Stations within Singapore Port Waters

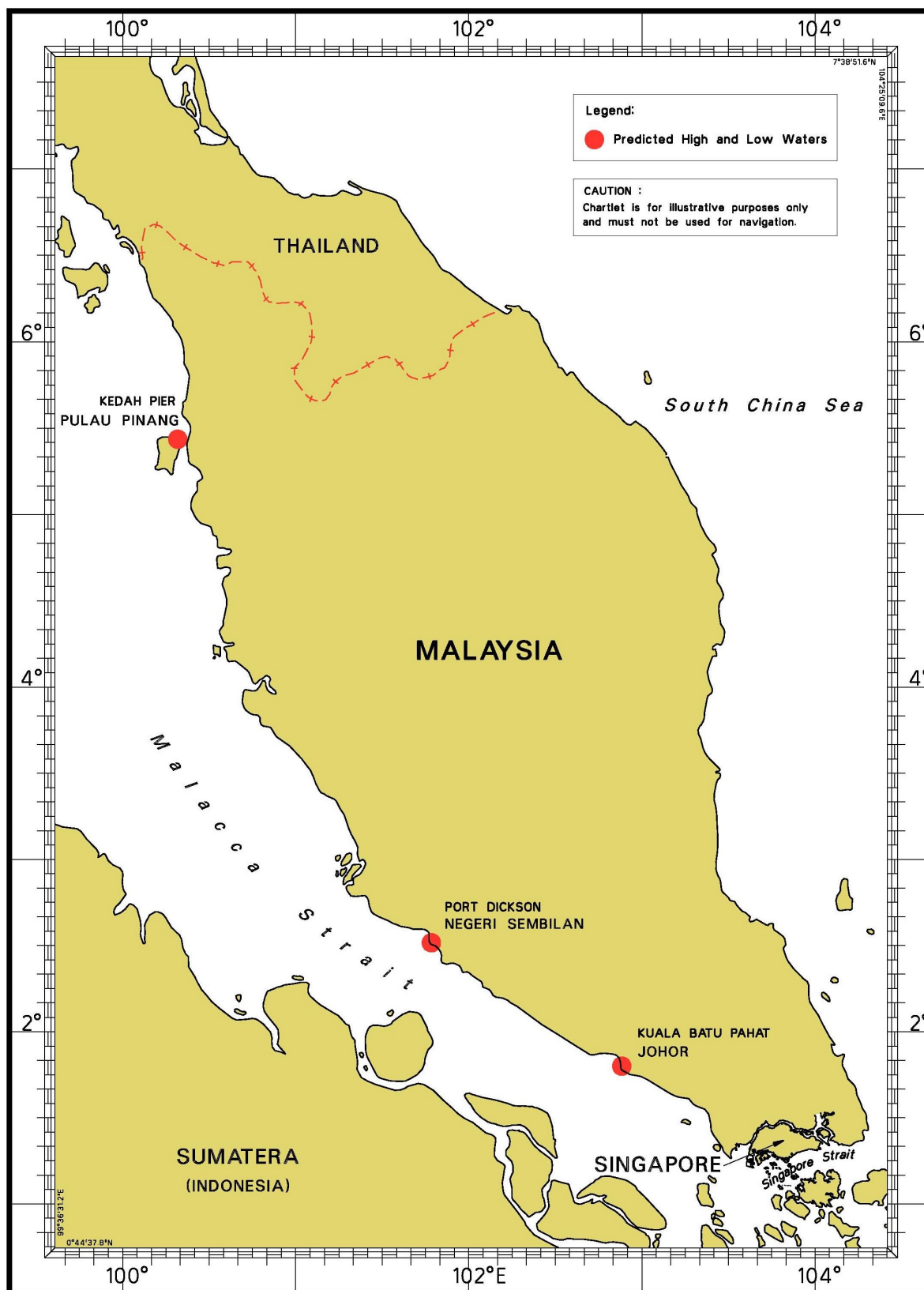


## Tidal Prediction Stations in Straits of Malacca and Singapore



## II NEW CHARTS AND PUBLICATIONS

### Tidal Prediction Stations In Malacca Strait





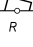





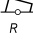
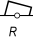

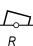


This publication can be purchased from any of the MPA appointed Chart Distributors.

Information on the MPA appointed Chart Distributors can be found from the following link:

<http://www.mpa.gov.sg/web/portal/home/media-centre/publications/singapore-tide-tables>

## II

### NOTICES TO MARINERS AND CHART CORRECTIONS

<b>GSP1/SP1</b>	3 Ed 15/1/18 Last NM 72/2018	(Maritime and Port Authority of Singapore)	<b>NM 79/2018</b>
<b>Move</b>	 <b>Fl.Y.4s</b>	from:	1°14·29'N 103°38·55'E
		to:	1°14·40'N 103°38·76'E
	 <b>Fl.Y.4s</b>	from:	1°14·28'N 103°37·94'E
		to:	1°14·40'N 103°37·40'E
		(Malaysia Marine Department Notice No. 121/2018)	<b>NM 80/2018</b>
<b>Insert</b>	 <b>Fl.R.5s SPJ E3</b>	1°19·26'N	104°08·00'E
	 <b>Fl.G.2s SPJ W1</b>	1°19·24'N	104°06·48'E
	 <b>Fl.R.2s SPJ W2</b>	1°19·45'N	104°06·31'E
	 <b>Fl(2)G.10s SPJ W3</b>	1°19·63'N	104°07·14'E
	 <b>Fl(2)R.10s SPJ W4</b>	1°19·94'N	104°07·13'E
<hr/>			
<b>202</b>	8 Ed 15/9/16 Last NM 68/2018	(Maritime and Port Authority of Singapore)	<b>NM 81/2018</b>
		<i>Note:</i> Former notice 113(T)/2017 is cancelled	
<b>Delete</b>	legend, Racon(O), at lighthouse	1°19·81'N	104°24·34'E
		(Admiralty Notice No. 36/4233/18)	<b>NM 82/2018</b>
<b>Amend</b>	light to, <b>Fl.R.6s</b>	0°48·54'N	104°36·85'E
<hr/>			
<b>502</b>	7 Ed 1/9/15 Last NM 69/2018	(Malaysia Marine Department Notice No. 121/2018)	<b>NM 80/2018</b>
<b>Insert</b>	 <b>Fl(2)G.6s SPJ E1</b>	1°19·17'N	104°08·50'E
	 <b>Fl(2)R.6s SPJ E2</b>	1°18·95'N	104°08·34'E
	 <b>Fl.R.5s SPJ E3</b>	1°19·26'N	104°08·00'E
	 <b>Fl.G.2s SPJ W1</b>	1°19·24'N	104°06·48'E
	 <b>Fl.R.2s SPJ W2</b>	1°19·45'N	104°06·31'E
	 <b>Fl(2)G.10s SPJ W3</b>	1°19·63'N	104°07·14'E
	 <b>Fl(2)R.10s SPJ W4</b>	1°19·94'N	104°07·13'E

**II**  
**TEMPORARY AND PRELIMINARY NOTICES**

NIL

### III NAVIGATIONAL INFORMATION

(NM 83/2018)

**SINGAPORE PORT MARINE NOTICES/CIRCULARS**

The Port Marine Notices/Circulars shortlisted below would be of particular interest to Mariners. Details and complete list of Port Marine Notices/Circulars are available at this link:

<http://www.mpa.gov.sg/web/portal/home/port-of-singapore/circulars-and-notice>

**PMN No.****Subject**

89/2018

Marine soil investigation works near Banyan Basin

90/2018

Construction of jetties off Jurong Island Causeway

91/2018

Construction of shore ramp and replacement of submarine cables at the entrance of Sungai Sembawang

92/2018

Operation of temporary jetty and RoRo ramp off east of Tuas View

---

Source: Maritime and Port Authority of Singapore

### III AMENDMENTS TO PUBLICATIONS

\*(NM 84/2018) UPDATING OF PUBLICATION "SINGAPORE PORT INFORMATION 2018/2019"

#### CHARACTERISTICS OF AIDS TO NAVIGATION

1. Page 132

#### TUAS VIEW EXTENSION

Delete the following:

Name Of Beacon/Buoy	Position Lat. N Long. E	Structure, Colour & Shape	Light Characteristic	Owner
F2-DDJV-5 Buoy	01°14'289' 103°38'551'	Yellow Pillar with 'X' topmark	Fl.Y.4s	Santarli
F2-DDJV-6 Buoy	01°14'284' 103°37'942'	Yellow Pillar with 'X' topmark	Fl.Y.4s	Santarli

Insert the following:

Name Of Beacon/Buoy	Position Lat. N Long. E	Structure, Colour & Shape	Light Characteristic	Owner
F3-PHBJV-1 Buoy	01°14'398' 103°37'399'	Yellow Pillar with 'X' topmark	Fl.Y.4s (sync)	Penta Ocean JV
F3-PHBJV-2 Buoy	01°14'398' 103°38'755'	Yellow Pillar with 'X' topmark	Fl.Y.4s (sync)	Penta Ocean JV

2. Page 133

#### TUAS VIEW EXTENSION

Amend the following:

Name Of Beacon/Buoy	Position Lat. N Long. E	Structure, Colour & Shape	Light Characteristic	Owner
PKHDB-21 Buoy	01°14'424' 103°36'266'	Green conical	Fl.G.2s	Xinsha Holding Pte Ltd

### III AMENDMENTS TO PUBLICATIONS

3. Page 142

**APPROACHES TO SHELL SBM**

Amend the following:

Name Of Beacon/Buoy	Position Lat. N Long. E	Structure, Colour & Shape	Light Characteristic	Owner
Semakau Light	01°12'587' 103°46'657'	Sector light on top of Generator Building at Semakau Island (Centre of white light is 17.04°)	<b>DirF.WRG.15m13M (occas).</b> <b>DirF.WRG.15m4M (Day)</b> <b>G 16·0° - 16·5° (0·5°)</b> <b>W 16·5° - 17·5° (1·0°)</b> <b>R 17·5° - 19·0° (1·5°)</b>	Shell Eastern Petroleum Pte Ltd

**WHARVES AND BERTHS**

4. Page 162

**18 JURONG ISLAND - BANYAN BASIN (UT SINGAPORE SERVICES PTE LTD)**  
**(1°14·5'N, 103°41·5'E)**

Amend the following:

Berth	Length of Berth Box	Depth Alongside (Year Surveyed)	Controlling Depth In Approaches
OMU 1	380m	<b>23·8 (2018)</b>	22·6m
OMU 2	380m	<b>23·6 (2018)</b>	22·6m
OMU 3	230m	<b>22·8 (2018)</b>	From East 15·0m ; From West 20·7m
OMU 11	430m	<b>17·6m (2018)</b>	From East 15·0m ; From West 16·6m
OMU 12			
OMU 13			

5. Page 164

**24 JURONG ISLAND (PETROCHEMICAL CORPORATION OF SINGAPORE)**  
**(1°15·9'N, 103°43·0'E)**

Amend the following:

Berth	Length of Berth Box	Depth Alongside (Year Surveyed)	Controlling Depth In Approaches
OPCS6	285m	<b>14·2 (2018)</b>	12·9m

### III AMENDMENTS TO PUBLICATIONS

6. Page 203

#### MARITIME AND PORT AUTHORITY OF SINGAPORE NAUTICAL CHARTS AND PUBLICATIONS DISTRIBUTORS

**Amend** the following:

Chart Distributor : Motion Smith  
 Address : **6 Jurong Pier Road**  
                   **Singapore 619158**  
 Telephone : (65) 6220 5098  
 Fax : (65) 6225 4902  
 Email : sales@motsmith.com  
 Internet Website : http://www.motsmith.com

7. Page 205

#### MPA APPOINTED ELECTRONIC NAVIGATIONAL CHART (ENC) DISTRIBUTORS

**Amend** the following:

DISTRIBUTOR	ADDRESS	TELEPHONE/FAX NO./EMAIL/ WEBSITE
Motion Smith	<b>6 Jurong Pier Road</b> <b>Singapore 619158</b>	Tel. No.: +65 6220 5098 Fax No.: +65 6225 4902 Email: sales@motsmith.com Website: http://www.motsmith.com

\*Source: Maritime and Port Authority of Singapore

#### \*(NM 85/2018) UPDATING OF PUBLICATION “SINGAPORE TIDE TABLES 2018”

#### DISTRIBUTOR FOR THE MARITIME AND PORT AUTHORITY OF SINGAPORE PUBLICATIONS

1. Page 275

**Amend** the following:

Chart Distributor : Motion Smith  
 Address : **6 Jurong Pier Road**  
                   **Singapore 619158**  
 Telephone : (65) 6220 5098  
 Fax : (65) 6225 4902  
 Email : sales@motsmith.com  
 Internet Website : http://www.motsmith.com

\*Source: Maritime and Port Authority of Singapore

**III**  
**AMENDMENTS TO PUBLICATIONS**

**\*(NM 86/2018) UPDATING OF PUBLICATION “SINGAPORE TIDE TABLES 2019”**

**DISTRIBUTOR FOR THE MARITIME AND PORT AUTHORITY OF SINGAPORE PUBLICATIONS**

1. Page 275

**Amend** the following:

Chart Distributor	: Motion Smith
Address	: <b>6 Jurong Pier Road</b> <b>Singapore 619158</b>
Telephone	: (65) 6220 5098
Fax	: (65) 6225 4902
Email	: sales@motsmith.com
Internet Website	: <a href="http://www.motsmith.com">http://www.motsmith.com</a>

\*Source: Maritime and Port Authority of Singapore

## IV

### REPRINT OF MARITIME SAFETY INFORMATION

The following Maritime Safety Information have been shortlisted, as they would be of particular interest to mariners.

#### TT175

VESSELS IN EAST JOHOR STRAIT ARE ADVISED TO NAVIGATE WITH PARTICULAR ALERTNESS AND CAUTION WHEN NEAR THE PROJECT AREAS OFF PULAU TEKONG, CHANGI AND MALANG PAPAN AS SHALLOW WATER AREAS EXIST. VESSELS ARE REMINDED TO PROCEED AT A SAFE SPEED AND MAINTAIN A PROPER LOOKOUT, PARTICULARLY FOR TUGS AND BARGES NAVIGATING NEAR THE PROJECT AREAS AND PASSENGER FERRIES CROSSING BETWEEN CHANGI AND PULAU TEKONG AND VICINITY OF PASIR GUDANG.

#### TT273

ALL VESSELS ARE ADVISED TO NAVIGATE WITH CAUTION, COMPLY WITH THE COLREGS, MAINTAIN VHF RADIO WATCH AND LISTEN TO TRAFFIC INFORMATION WHEN NAVIGATING IN THE SINGAPORE STRAIT AND PORT WATERS. MARINERS ARE ALSO ADVISED TO KEEP A GOOD LOOKOUT OF FREQUENT FERRIES CROSSING THE SINGAPORE STRAIT.

#### TT363

MARINERS ARE REMINDED NOT TO ANCHOR IN ALL AREAS IN THE TSS, INCLUDING PRECAUTIONARY AREAS OF THE STRAITS OF MALACCA AND SINGAPORE AS WELL AS BETWEEN THE LANDWARD LIMITS OF THE TSS AND APPROACHES TO THE PORTS. VESSELS ENTERING ANY PORT IN ANY LITTORAL STATES ARE TO ANCHOR IN THE ANCHORAGES DESIGNATED BY THE RESPECTIVE LITTORAL STATES ONLY.

#### TT399

VESSELS ARRIVING TO SINGAPORE OR TRANSITING THROUGH THE STRAIT ARE RECOMMENDED TO UPDATE THEIR DESTINATION ACCURATELY IN THE AIS TO ENHANCE SITUATIONAL AWARENESS FOR OTHER TRAFFIC IN THE VICINITY. EXAMPLE: SG-PEBGB FOR PILOT EASTERN BOARDING GROUND BRAVO.

#### TT418

WEST BOUND DEEP DRAFT VESSELS AND VLCCS ARE REMINDED TO COMPLY WITH THE RULES OF VESSELS NAVIGATING THROUGH THE STRAITS OF MALACCA AND SINGAPORE (SOMS). THEY SHALL ALLOW FOR AN UKC OF AT LEAST 3.5 METRES AT ALL TIMES DURING THE ENTIRE PASSAGE THROUGH THE SOMS AND AS FAR AS IT IS SAFE & PRACTICABLE, PROCEED AT A SPEED OF NOT MORE THAN 12 KTS OVER THE GROUND IN THE WESTBOUND LANE OF THE SINGAPORE STRAIT (BETWEEN SOUTH OF ST JOHN'S ISLAND & RAFFLES LIGHTHOUSE).

THEY ARE ADVISED TO BROADCAST, 8 HOURS BEFORE ENTERING THE TSS, NAVIGATIONAL INFORMATION GIVING NAME, DEADWEIGHT, DRAUGHT, SPEED AND TIMES OF PASSING HORSBURGH LIGHTHOUSE AND RAFFLES LIGHTHOUSE.

#### TT426

ALL MARINERS ARE REMINDED TO NAVIGATE WITH CAUTION IN THE PRECAUTIONARY AREAS AND TSS, MAINTAIN A GOOD LOOKOUT FOR CROSSING TRAFFIC. VESSELS INTENDING TO CROSS THE TSS SHALL DO SO ONLY WHEN IT IS SAFE AND SHALL AT ALL TIMES COMPLY WITH THE COLLISION REGULATIONS.

#### TT430 (AMENDED ON 23 AUG 2018 0130Z)

THE FOLLOWING ATONS AIS/RACONS ARE TEMPORARILY REMOVED FOR UPGRADING.

ATONS WITH AIS TEMPORARILY REMOVED FOR UPGRADING:

1. ANGLER BUOY
2. BANYAN BEACON
3. MALANG PAPAN BEACON
4. RASU BUOY
5. RAFFLES LIGHTHOUSE
6. SAKIJANG BEACON
7. SELEGI BEACON

ATONS WITH RACON TEMPORARILY REMOVED FOR UPGRADING:

1. CYRENE BEACON
2. HORSBURGH LIGHTHOUSE
3. SEREBUT BEACON

MARINERS ARE ADVISED TO NAVIGATE WITH CAUTION.

## IV

### REPRINT OF MARITIME SAFETY INFORMATION

TT437

ALL VESSELS IN SEMBAWANG WHARVES LOCATION ARE TO CHECK YOUR COSPAS-SARSAT SYSTEM AND ENSURE THAT 121.5MHZ IS NOT TRANSMITTED. PLEASE STOP EMITTING YOUR 121.5MHZ DISTRESS ALERT IF YOU ARE NOT IN DISTRESS TO PREVENT INTERFERENCE TO AIRSPACE FREQUENCY.

TT440

A NUMBER OF UNKNOWN VESSELS ARE OBSERVED ANCHORED IN THE TSS/PRECAUTIONARY AREA SOUTH OF TG. RAMUNIA AT APPROXIMATE POSITION 1°17'91"N 104°14'92"E. ALL VESSELS ARE ADVISED TO KEEP A GOOD LOOKOUT AND PROCEED WITH CAUTION WHEN PASSING THIS AREA IN THE SINGAPORE STRAIT.

TT465

DGPS SERVICE AT HORSBURGH LIGHTHOUSE (REFERENCE STATION 130/131) IN POSITION 1°19'8"N 104°24'34"E IS UNAVAILABLE. MARINERS ARE ADVISED TO USE ALTERNATE REFERENCE STATION AT RAFFLES LIGHTHOUSE (REFERENCE STATION 132/133).

TT490

BATU BERHANTI BUOY FL(2)5s IN CHARTED POSITION 01°11'76"N 103°52'61"E IS REPORTED DRIFTED OUT OF POSITION. ALL VESSELS ARE ADVISED TO NAVIGATE WITH EXTRA CAUTION.

TT961

VESSELS INTENDING TO CROSS THE TRAFFIC SEPERATION SCHEME (TSS) OR PRECAUTIONARY AREAS IN THE SINGAPORE STRAIT DURING THE HOURS OF DARKNESS ARE RECOMMENDED TO DISPLAY THE NIGHT SIGNALS CONSISTING OF 3 ALL ROUND GREEN LIGHTS IN A VERTICAL LINE AS DETAILED IN THE MARITIME AND PORT AUTHORITY OF SINGAPORE'S PORT MARINE CIRCULAR, 04 OF 2013 DATED 7 MAY 2013.

SR123

SEA ROBBERIES ARE REPORTED IN THE SINGAPORE STRAIT. ALL VESSELS TO REPORT ANY SUSPICIOUS CRAFT TO VTIS SINGAPORE.

ALL VESSELS IN THE VICINITY ARE REQUESTED TO KEEP A SHARP LOOKOUT, RENDER NECESSARY ASSISTANCE, AND REPORT ANY SIGHTINGS TO MRSC JOHOR OR NEAREST COASTAL MALAYSIAN AUTHORITIES FOR FURTHER INSTRUCTION.

---

ISSUED BY SINGAPORE PORT OPERATIONS CONTROL CENTRE (as at 27<sup>th</sup> Sep 2018)

**V**  
**EXTRACT OF ADMIRALTY NOTICES TO MARINERS**  
**FOR DUAL-BADGED CHARTS**

**These notices can also be accessed directly from UKHO Website:**

<https://www.admiralty.co.uk/maritime-safety-information/admiralty-notices-to-mariners>

**4443 MISCELLANEOUS UPDATES TO CHARTS**

Source: UKHO

<i>Chart</i>	<i>Previous Update</i>	<i>Details</i>
4038	4079/18	Replace existing note MARINERS' ROUTEING GUIDE MALACCA AND SINGAPORE STRAITS with accompanying note, MARINERS' ROUTEING GUIDES MALACCA AND SINGAPORE STRAITS, centred on 1°28·50'N, 103°38·71'E
4039	4079/18	Replace existing note with accompanying note, MARINERS' ROUTEING GUIDES MALACCA AND SINGAPORE STRAITS, centred on 1°03·61'N, 103°46·58'E
4040	4079/18	Replace existing note with accompanying note, MARINERS' ROUTEING GUIDES MALACCA AND SINGAPORE STRAITS, centred on 1°19·41'N, 103°46·59'E
4041	4079/18	Replace existing note with accompanying note, MARINERS' ROUTEING GUIDES MALACCA AND SINGAPORE STRAITS, centred on 1°17·40'N, 103°47·81'E
4042	4079/18	Replace existing note with accompanying note, MARINERS' ROUTEING GUIDES MALACCA AND SINGAPORE STRAITS, centred on 1°10·97'N, 104°04·96'E
4043	4079/18	Replace existing note with accompanying note, MARINERS' ROUTEING GUIDES MALACCA AND SINGAPORE STRAITS, centred on 1°28·41'N, 104°08·17'E

---

Updated to Admiralty Notices to Mariners No. 39 of 2018 dated 27<sup>th</sup> September 2018

*To accompany Notice to Mariners 4443/2018*

*On Chart 4038*

MARINERS' ROUTEING GUIDES  
MALACCA AND SINGAPORE STRAITS  
See Mariners' Routeing Guides, 5525 Malacca Strait, 5524 Singapore Strait – Western Part and 5527 Singapore Strait – Eastern Part, for information on passage planning, routeing regulations, aids to navigation, radio reporting and other navigational advice.

*To accompany Notice to Mariners 4443/2018*

*On Chart 4039*

MARINERS' ROUTEING GUIDES  
MALACCA AND SINGAPORE STRAITS  
See Mariners' Routeing Guides, 5525 Malacca Strait, 5524 Singapore Strait – Western Part and 5527 Singapore Strait – Eastern Part, for information on passage planning, routeing regulations, aids to navigation, radio reporting and other navigational advice.

*To accompany Notice to Mariners 4443/2018*

*On Chart 4040*

MARINERS' ROUTEING GUIDES  
MALACCA AND SINGAPORE STRAITS  
See Mariners' Routeing Guides, 5525 Malacca Strait, 5524 Singapore Strait – Western Part and 5527 Singapore Strait – Eastern Part, for information on passage planning, routeing regulations, aids to navigation, radio reporting and other navigational advice.

*To accompany Notice to Mariners 4443/2018*

*On Chart 4041*

MARINERS' ROUTEING GUIDES  
MALACCA AND SINGAPORE STRAITS  
See Mariners' Routeing Guides, 5525 Malacca Strait, 5524 Singapore Strait – Western Part and 5527 Singapore Strait – Eastern Part, for information on passage planning, routeing regulations, aids to navigation, radio reporting and other navigational advice.

*To accompany Notice to Mariners 4443/2018*

*On Chart 4042*

MARINERS' ROUTEING GUIDES  
MALACCA AND SINGAPORE STRAITS  
See Mariners' Routeing Guides, 5525 Malacca Strait, 5524 Singapore Strait – Western Part and 5527 Singapore Strait – Eastern Part, for information on passage planning, routeing regulations, aids to navigation, radio reporting and other navigational advice.

*To accompany Notice to Mariners 4443/2018*

*On Chart 4043*

MARINERS' ROUTEING GUIDES  
MALACCA AND SINGAPORE STRAITS  
See Mariners' Routeing Guides, 5525 Malacca Strait,  
5524 Singapore Strait – Western Part and 5527  
Singapore Strait – Eastern Part, for information on  
passage planning, routeing regulations, aids to  
navigation, radio reporting and other navigational  
advice.

## **HYDROGRAPHIC NOTE - Instructions**

1. Mariners are requested to notify the Chief Hydrographer, Maritime and Port Authority of Singapore, when new or suspected dangers to navigation are discovered, changes are observed in aids to navigation or where corrections to nautical publications may be necessary. Reports, which cannot be confirmed or are lacking in certain details should not be withheld.
2. Any ambiguities of time, positioning and depth should be stressed and any firm expectation of being able to check the information provided on a following voyage should be mentioned.
3. Mariners using satellite position fixing systems, eg. GPS, should provide details of equipment and datum used (where applicable). Where bearings (true or magnetic) are taken visually or by radar to fix a position, it should include more than two objects in order to provide a check on its accuracy. A position may also be defined by bearing and distance from a conspicuous object eg. beacon, lighthouse etc.
4. The note should include a tracing or a digital image of the chart used and the details should be clearly marked.
5. Echo sounders frequently register greater depths than the advertised maximum depth for the equipment, eg. a trace appearing at 50 metres may be in fact be 550 metres or even 1050 metres for equipment whose maximum depth is 500 metres. Erroneous depths caused by 2nd transmission error can usually be recognised by the following:
  - (a) the tracing being weaker than normal for the depth registered,
  - (b) the trace appearing to pass through the transmission line,
  - (c) the feathery nature of the trace.
6. Upon receipt of a hydrographic note, a Notice to Mariners may be issued. The sender's vessel or name is quoted as the source unless the same information is also received in foreign Notices to Mariners.
7. Reports of shoals, uncharted dangers and defects in aids to navigation may also be made to the appropriate Singapore Port Operations Control Centre on VHF Channels 10, 12, 14, 68 or 73.

## HYDROGRAPHIC NOTE

To:

Chief Hydrographer  
Maritime and Port Authority of Singapore  
7B Keppel Road #20-00 Tanjong Pagar Complex  
Singapore 089055

Tel : (65) 6325 2027  
Fax : (65) 6226 1076  
Email : [hydrographic@mpa.gov.sg](mailto:hydrographic@mpa.gov.sg)

### **Sender's Contact Details** :

Date : .....

Name of Vessel : .....

Address of Sender : .....

Tel : ..... Fax : .....

Email : .....

### **Nature of Observation** :

General Location : .....

Subject : .....

Position : Lat. .... Long. ....

Charts Used : .....

Date & Time of Observation : .....

Details : .....

.....

.....

Attachment : .....

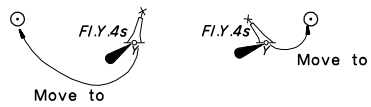
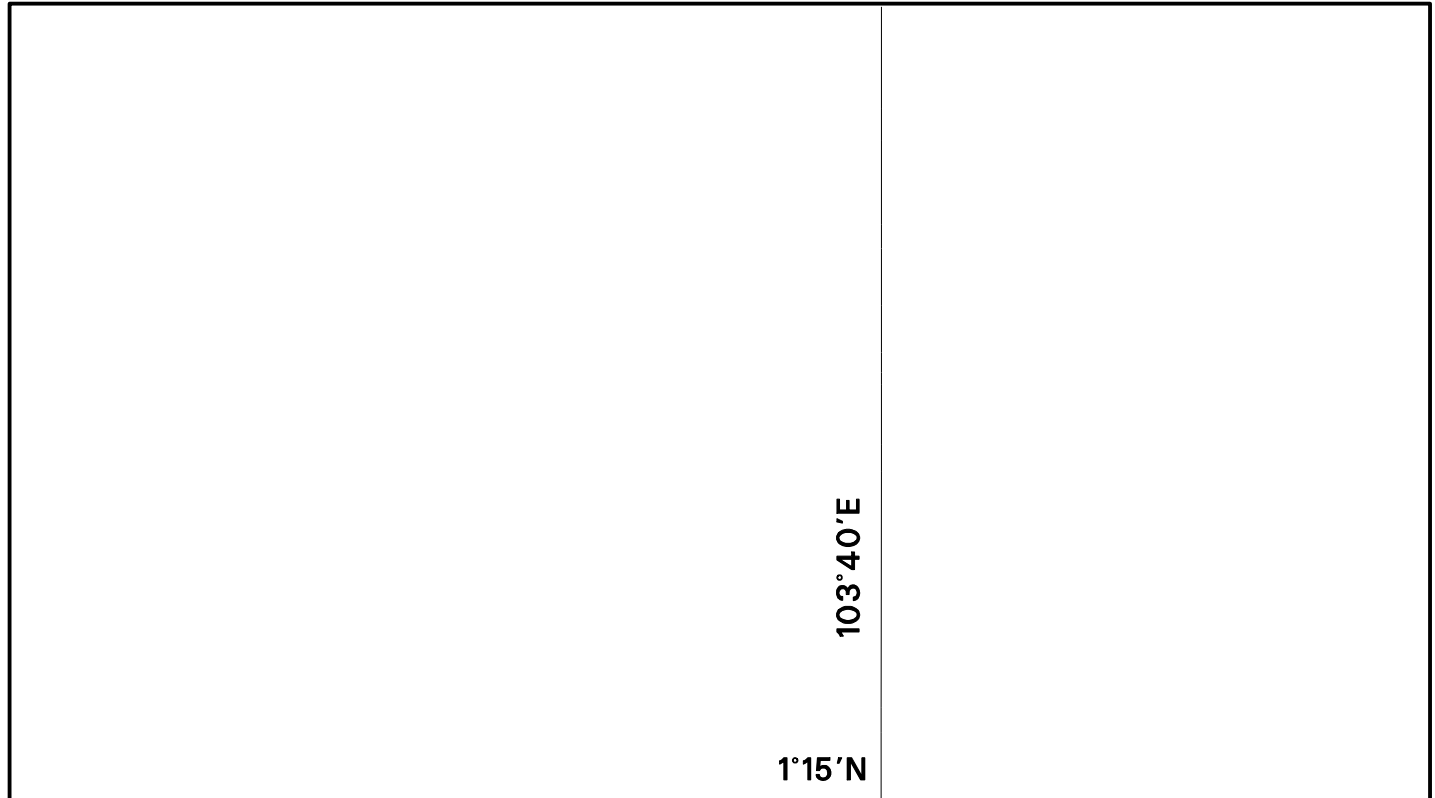
### **Equipment Used** :

Type of Position Fixing : ..... GPS / DGPS ..... Others : .....

Type of Echo Sounder : .....

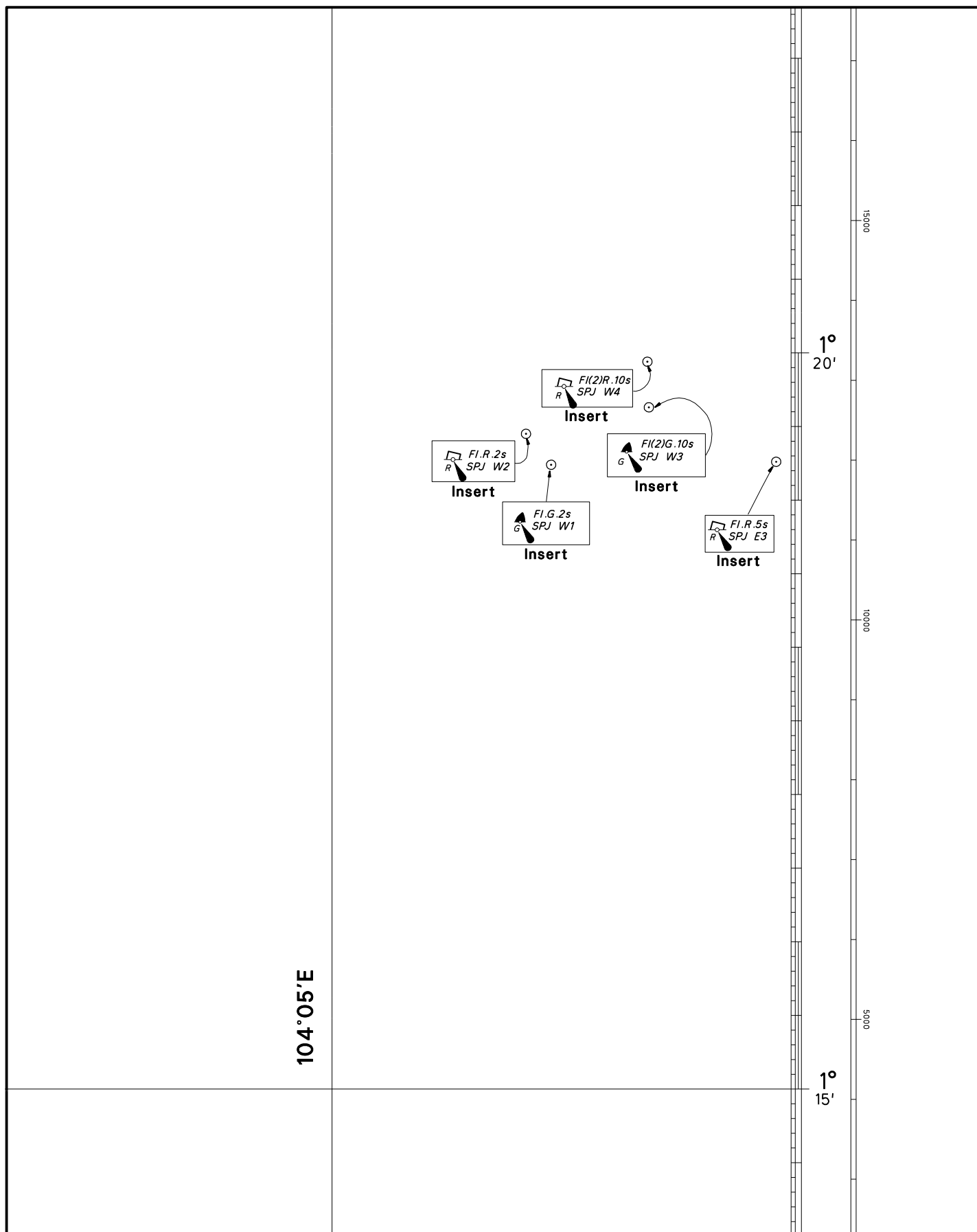
Name and Signature : .....

Ship's/Company's Stamp : .....



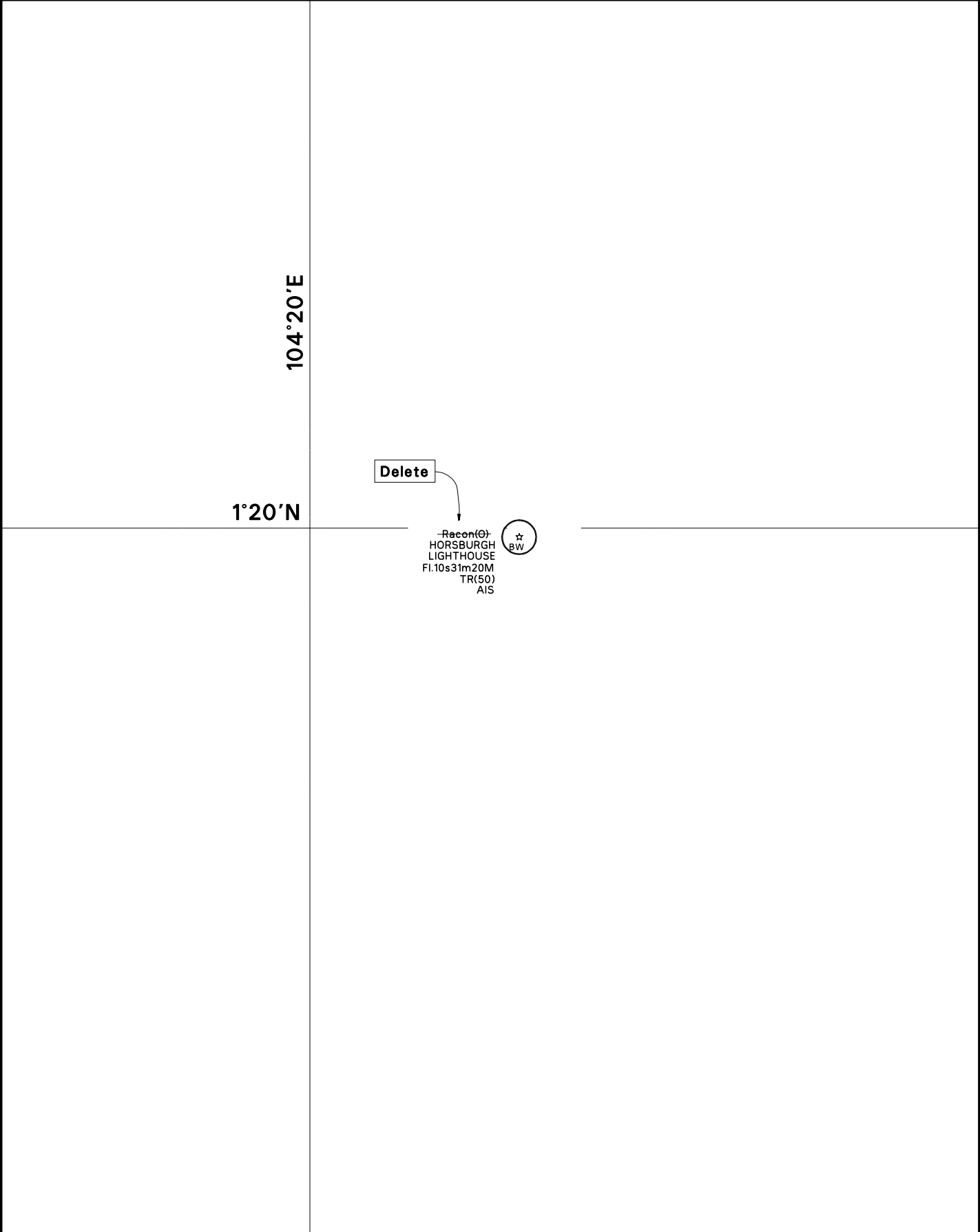
CORRECTION NO.	SNM EDN NO.	LAST CORR N O.	CHART NO.	Location on Chart		
79	10/2018	72/2018	GSP1/SP1	X		

Caution: some computer printers might distort the tracings.  
Users are advised to check and, if necessary, adjust settings on the printer



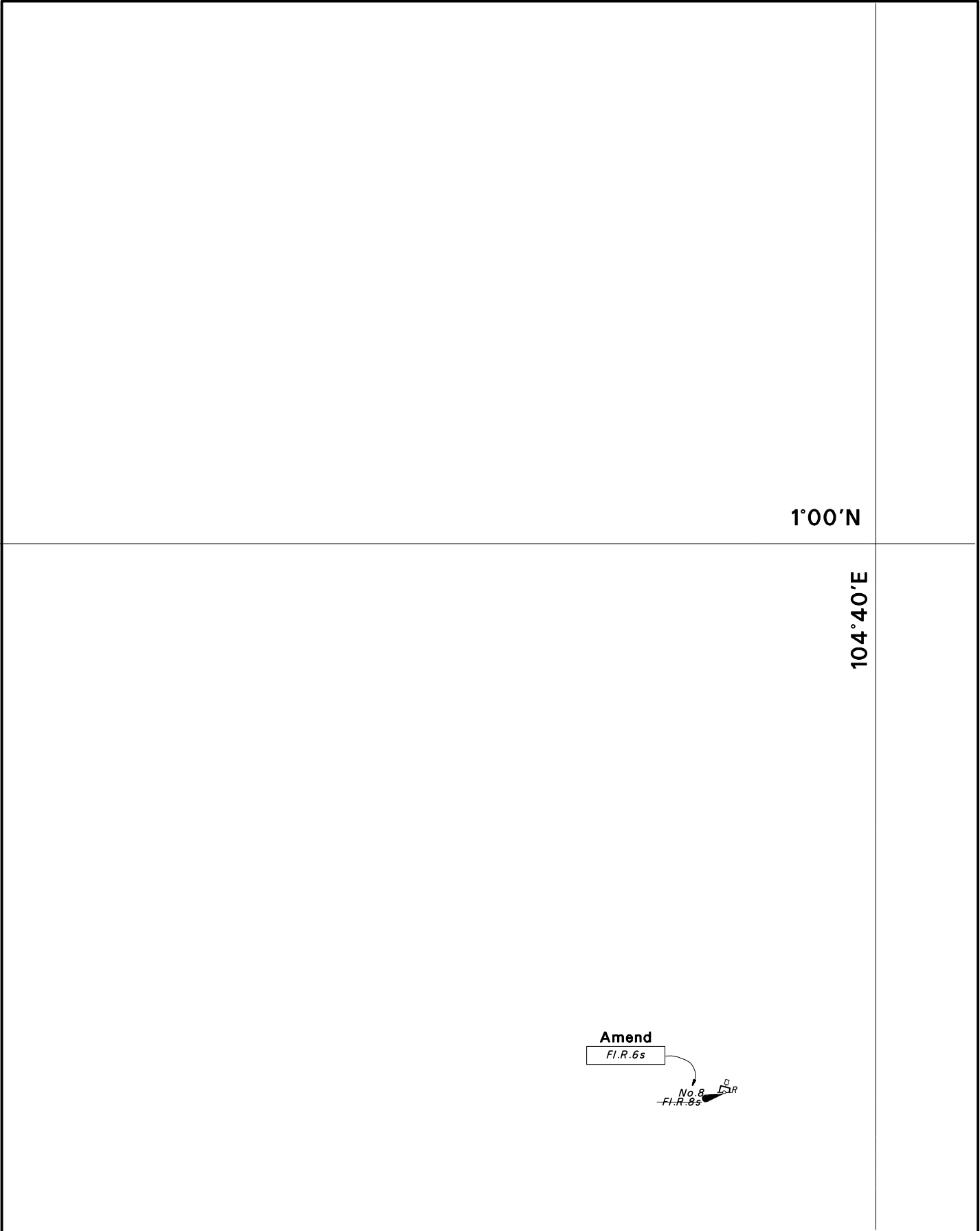
CORRECTION NO.	SNM EDN NO.	LAST CORRNO NO.	CHART NO.	Location on Chart		
80	10/2018	79/2018	GSP1/SP1			X

Caution: some computer printers might distort the tracings.  
Users are advised to check and, if necessary, adjust settings on the printer



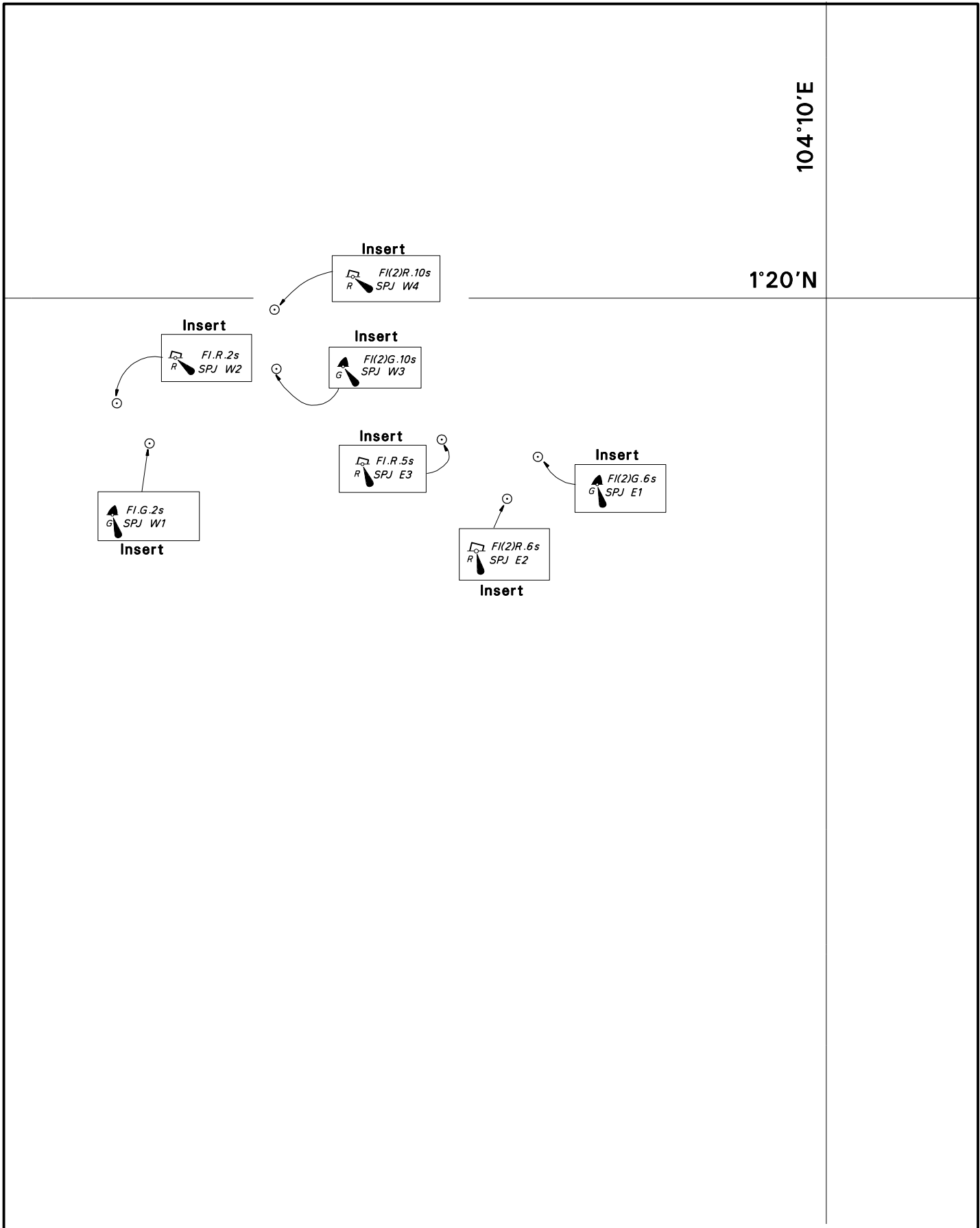
CORRECTION NO.	SNM EDN NO.	LAST CORR N NO.	CHART NO.	Location on Chart		
81	10/2018	68/2018	202			X

Caution: some computer printers might distort the tracings.  
Users are advised to check and, if necessary, adjust settings on the printer



CORRECTION NO.	SNM EDN NO.	LAST CORR N NO.	CHART NO.	Location on Chart		
82	10/2018	81/2018	202			X

Caution: some computer printers might distort the tracings.  
Users are advised to check and, if necessary, adjust settings on the printer



CORRECTION NO.	SNM EDN NO.	LAST CORR N O.	CHART NO.	Location on Chart		
80	10/2018	69/2018	502			X

Caution: some computer printers might distort the tracings.  
Users are advised to check and, if necessary, adjust settings on the printer