



## SINGAPOREAN NOTICES TO MARINERS

SECTION	CONTENT	Page
I	Affected Charts & Publications	1
II	New Charts & Publications	3
	Notices to Mariners and Chart Corrections	9
	Temporary and Preliminary Notices	10
III	Navigational Information	11
	Amendments to Publications	12
IV	Reprint of Maritime Safety Information	13
V	Extract of Admiralty Notices to Mariners for Dual-Badged Charts	15

The monthly Notices to Mariners contain information required to keep charts and publications published by the Hydrographic Division, Maritime and Port Authority of Singapore up-to-date.

Mariners are requested to notify the Chief Hydrographer, Maritime and Port Authority of Singapore, immediately of the discovery of new or suspected dangers to navigation, observed changes to aids to navigation and ways Singaporean Charts and Publications can be improved. The Hydrographic Note on the back page should be used for this purpose.

Detailed information of charts and publications (coverage of charts, latest editions and distributors) are available on the Maritime and Port Authority Website: [www.mpa.gov.sg](http://www.mpa.gov.sg)

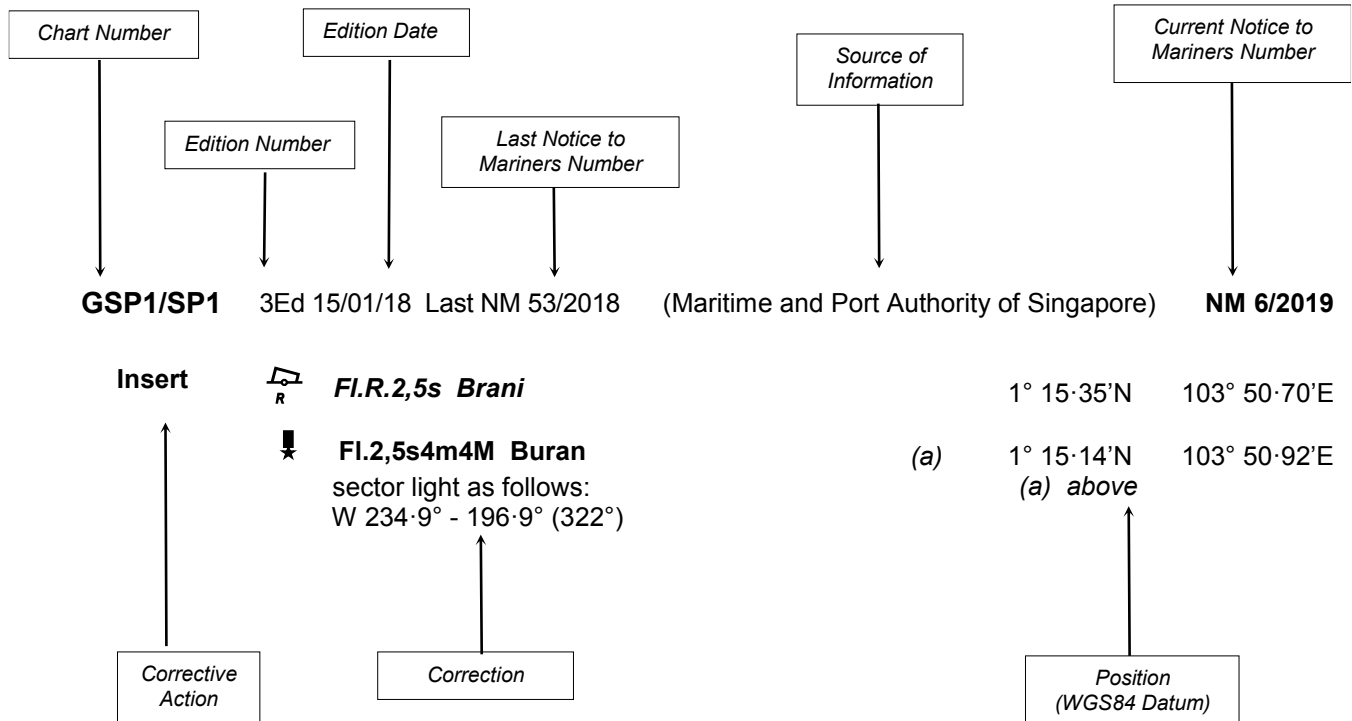
- [Singaporean Notice to Mariners](#)
- [Singaporean Charts](#)
- [Dual-Badged Charts](#)
- [Singapore ENC](#)
- [Malacca and Singapore Straits ENC](#)
- [Singapore Port Information](#)
- [Singapore Tide Tables](#)

### Contact information:

Hydrographic Division  
Maritime and Port Authority of Singapore  
7B Keppel Road  
#20-00 Tanjong Pagar Complex  
Singapore 089055  
Tel : (65) 6325 2027  
Fax : (65) 6226 1076  
Email : [hydrographic@mpa.gov.sg](mailto:hydrographic@mpa.gov.sg)

## EXPLANATION OF FORMAT

The elements of a typical chart correction are explained below.



### Notes:

a) Notice to Mariners number followed by:

**T** indicates a Temporary Notice (eg. **NM 9T/2019**).

**P** indicates a Preliminary Notice (eg. **NM 10P/2019**).

b) Bearings are true reckoned clockwise from 000° to 359°; those relating to lights are from seaward.

c) Heights and elevations are above Mean High Water Springs.

I  
**AFFECTED CHARTS AND PUBLICATIONS**

**INDEX OF AFFECTED CHARTS**

<b>DESCRIPTION</b>	<b>NOTICE NO.</b>	<b>PAGE NO.</b>
New Charts and Publications	-	3 - 8
Temporary and Preliminary Notices	-	10
Singapore Port Marine Notices/Circulars	*101	11
Amendments to Publications	-	12
Reprint of Maritime Safety Information	-	13 - 14
Extract of Admiralty Notices to Mariners for Dual-Badged Charts	-	15 - 16

\*Source: Maritime and Port Authority of Singapore

I  
**AFFECTED CHARTS AND PUBLICATIONS**

**INDEX OF NOTICES**

<b>NOTICE NO.</b>	<b>DESCRIPTION</b>	<b>PAGE NO.</b>
-	New Charts and Publications	3 - 8
-	Temporary and Preliminary Notices	10
*101	Singapore Port Marine Notices/Circulars	11
-	Amendments to Publications	12
-	Reprint of Maritime Safety Information	13 - 14
-	Extract of Admiralty Notices to Mariners for Dual-Badged Charts	15 - 16

\*Source: Maritime and Port Authority of Singapore

## II

## NEW CHARTS AND PUBLICATIONS

NEW EDITION SINGAPOREAN CHARTS PUBLISHED ON 12<sup>TH</sup> SEPTEMBER 2019

<b>Chart Number</b>	:	502
<b>Title</b>	:	Singapore Strait - Eastern Part
<b>Coverage</b>	:	Lat 01° 07·00' N      01° 24·61' N Long 103° 51·43' E      104° 17·31' E
<b>Scale</b>	:	1 : 50 000
<b>Date to be Published</b>	:	12 <sup>th</sup> September 2019
<b>Size of Chart</b>	:	960.0 x 649.2 mm
<b>Description</b>	:	This new edition includes changes to submarine cables and bathymetry details.  The existing chart of the same number published on 1 <sup>st</sup> September 2015 has been superseded.

## II

## NEW CHARTS AND PUBLICATIONS

NEW EDITION DUAL BADGED CHARTS PUBLISHED ON 12<sup>TH</sup> SEPTEMBER 2019

<b>Chart Number</b>	:	4039
<b>Title</b>	:	Indonesia, Singapore and Malaysia Western Approaches to Main Strait
<b>Coverage</b>	:	Lat 01° 01·50' N      01° 13·70' N Long 103° 31·20' E      103° 49·00' E
<b>Scale</b>	:	1 : 30 000
<b>Date to be Published</b>	:	12 <sup>th</sup> September 2019
<b>Size of Chart</b>	:	1100.7 x 749.5 mm
<b>Description</b>	:	This new edition includes changes to anchorages, bathymetry and topographic details.
		The existing chart of the same number published on 4 <sup>th</sup> May 2017 has been superseded.

<b>Chart Number</b>	:	4041
<b>Title</b>	:	Singapore and Indonesia Pulau Sebarok to Changi
<b>Coverage</b>	:	Lat 01° 07·40' N      01° 19·60' N Long 103° 46·90' E      104° 04·70' E
<b>Scale</b>	:	1 : 30 000
<b>Date to be Published</b>	:	12 <sup>th</sup> September 2019
<b>Size of Chart</b>	:	1100.6 x 749.5 mm
<b>Description</b>	:	This new edition includes changes to anchorages, bathymetry and topographic details.
		The existing chart of the same number published on 27 <sup>th</sup> December 2018 has been superseded.

<b>Chart Number</b>	:	4042
<b>Title</b>	:	Indonesia, Singapore and Malaysia Changi to Pulau Mungging and Tanjung Buntan to Tanjung Tondang
<b>Coverage</b>	:	Lat 01° 09·55' N      01° 21·75' N Long 104° 01·70' E      104° 19·50' E
<b>Scale</b>	:	1 : 30 000
<b>Date to be Published</b>	:	12 <sup>th</sup> September 2019
<b>Size of Chart</b>	:	1100.6 x 749.5 mm
<b>Description</b>	:	This new edition includes changes to submarine cables, bathymetry and topographic details.
		The existing chart of the same number published on 15 <sup>th</sup> June 2017 has been superseded.

## II

## NEW CHARTS AND PUBLICATIONS

NEW EDITION SINGAPORE ENC RELEASED ON 12<sup>TH</sup> SEPTEMBER 2019

**ENC Name** : SG5C4039

**Location** : Western Approaches to Main Strait

**Coverage** : Lat 01° 01·50' N 01° 13·70' N  
Long 103° 31·20' E 103° 49·00' E

**Compilation Scale** : 1 : 22 000

**Date Released** : 12<sup>th</sup> September 2019

**Description** : This new edition includes changes to anchorages and bathymetry details.

The existing cell of the same name released on 17<sup>th</sup> July 2017 has been superseded.

**ENC Name** : SG5C4041

**Location** : Pulau Sebarok to Changi

**Coverage** : Lat 01° 07·40' N 01° 19·60' N  
Long 103° 45·60' E 104° 04·70' E

**Compilation Scale** : 1 : 22 000

**Date Released** : 12<sup>th</sup> September 2019

**Description** : This new edition includes changes to bathymetry details.

The existing cell of the same name released on 27<sup>th</sup> December 2018 has been superseded.

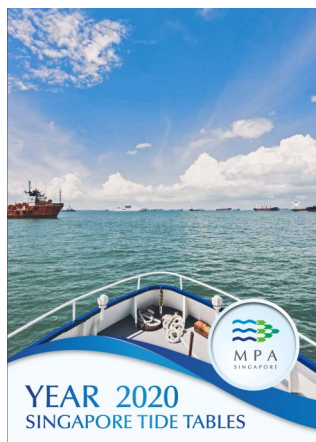
## II

## NEW CHARTS AND PUBLICATIONS

SINGAPORE TIDE TABLES YEAR 2020 PUBLISHED ON 30<sup>TH</sup> SEPTEMBER 2019**Summary of Publication**

This publication contains Tidal Height and Tidal Stream Predictions covering stations in Singapore Port Waters and along the Straits of Malacca and Singapore.

This publication consists of 5 segments.



**1. High and Low Water Predictions** at the following stations:

- a) Tanjong Pagar
- b) Sembawang

**2. Hourly Tidal Height Predictions** at the following stations:

- a) West Tuas
- b) Sultan Shoal Lighthouse
- c) Raffles Lighthouse
- d) West Coast
- e) Bukom
- f) Tanjong Pagar
- g) Tanah Merah
- h) Tanjong Changi
- i) Sembawang
- j) Singapore Strait - Horsburgh Lighthouse

**3. Hourly Tidal Stream Predictions** at the following stations:

- a) Main Strait - off Tuas View
- b) Sinki Fairway - Banyan
- c) Jong Fairway - off Sisters Buoy
- d) Main Strait - off Shell SBM Buoy
- e) Sentosa - off Cruise Bay
- f) East Buran
- g) Main Strait - Eastern Petroleum A
- h) Kuala Johor - off Malang Tiga

**4. Maximum and Slack Tidal Stream Predictions** at the following stations:

- a) Malacca Strait - off Pulau Iyu Kecil Light
- b) Singapore Strait - Selat Phillip
- c) Singapore Strait - Karang Banteng (Buffalo Rock)
- d) Singapore Strait - Horsburgh Lighthouse

**5. Malacca Strait - High and Low Water Predictions** at the following stations:

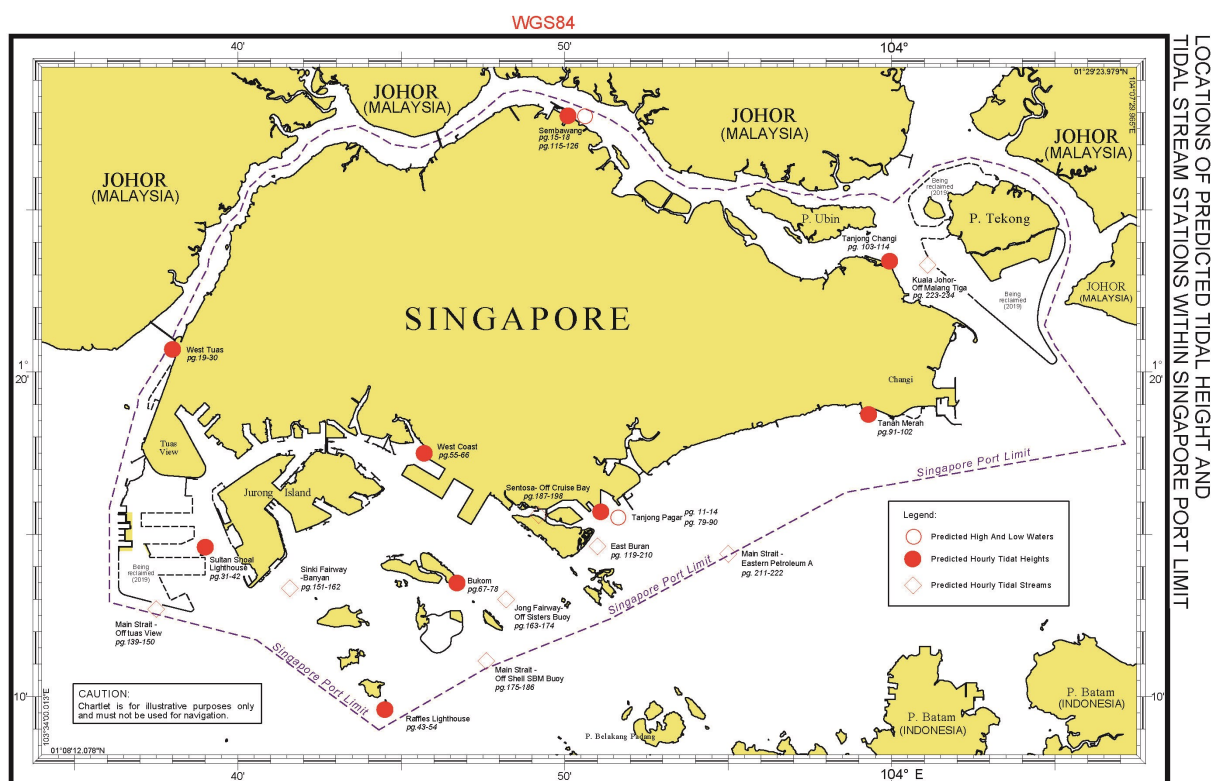
- a) Kedah Pier, Pulau Pinang
- b) Port Dickson
- c) Kuala Batu Pahat

The locations of the above stations are shown in the chartlets below:

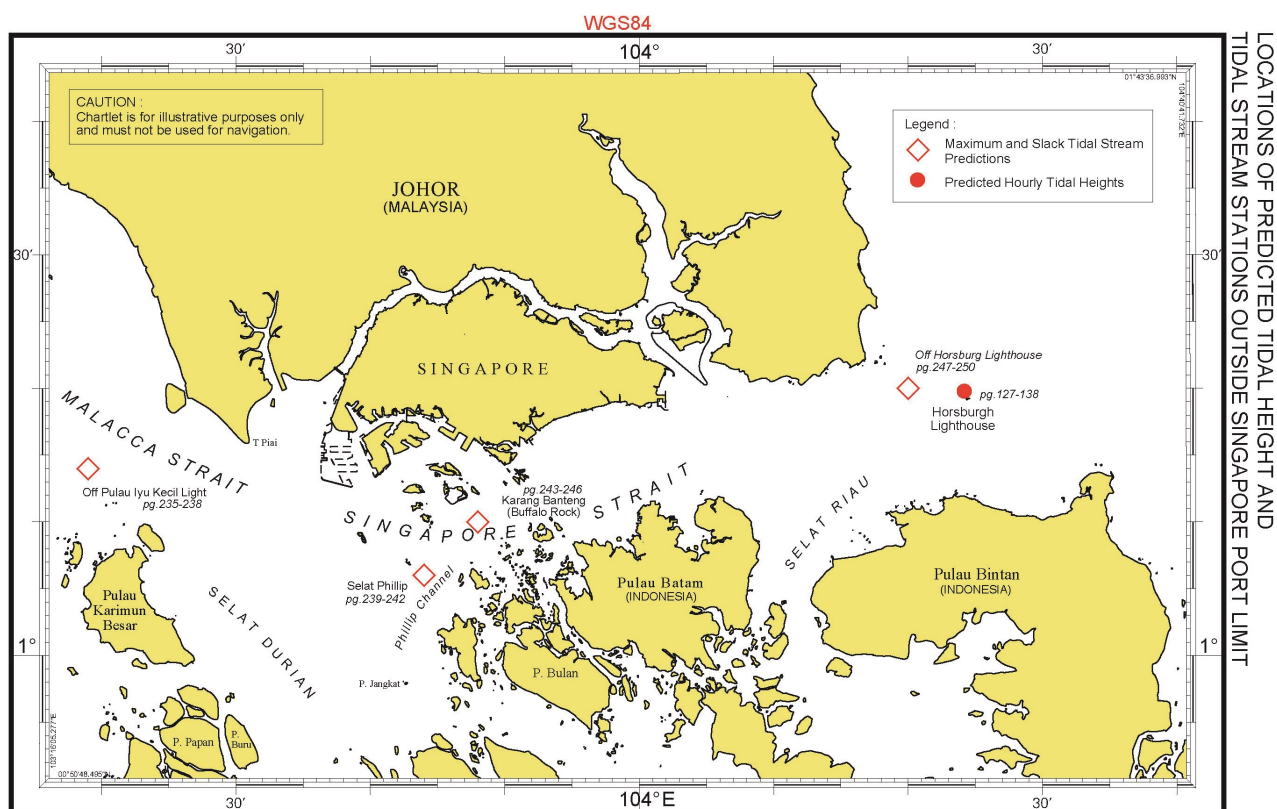


## II NEW CHARTS AND PUBLICATIONS

### Tidal Prediction Stations within Singapore Port Waters



### Tidal Prediction Stations in Straits of Malacca and Singapore



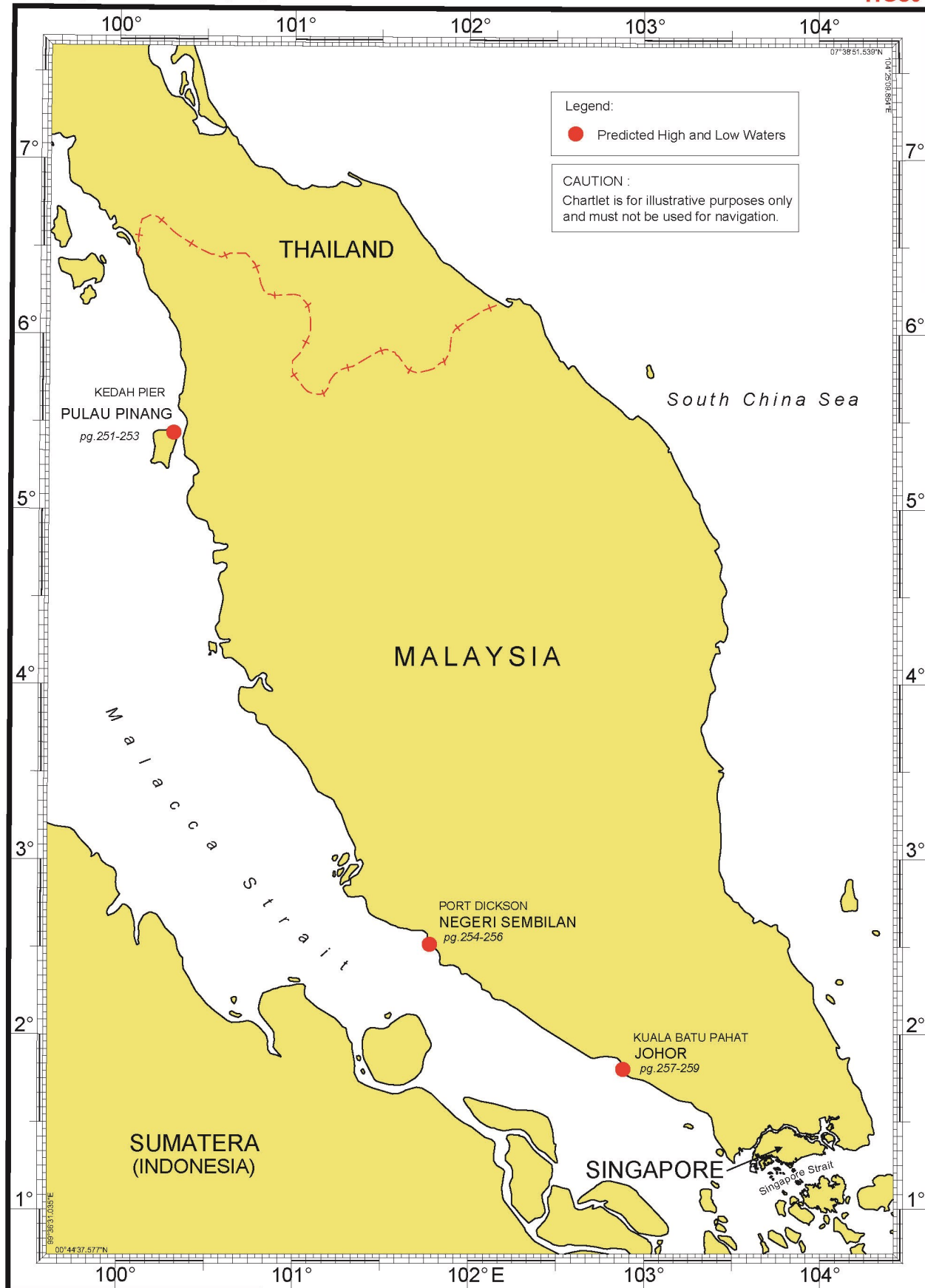
## II

### NEW CHARTS AND PUBLICATIONS

#### Tidal Prediction Stations In Malacca Strait

LOCATIONS OF PREDICTED TIDAL HEIGHT STATIONS  
ALONG THE MALACCA STRAIT

WGS84



**II**  
**NOTICES TO MARINERS AND CHART CORRECTIONS**

NIL

**II**  
**TEMPORARY AND PRELIMINARY NOTICES**

NIL

### III NAVIGATIONAL INFORMATION

\*(NM 101/2019)

**SINGAPORE PORT MARINE NOTICES/CIRCULARS**

The Port Marine Notices/Circulars shortlisted below would be of particular interest to Mariners. Details and complete list of Port Marine Notices/Circulars are available at this link:

<http://www.mpa.gov.sg/web/portal/home/port-of-singapore/circulars-and-notices>

**PMN No.****Subject**

77/2019	Dredging works in Temasek Fairway
78/2019	Removal of jetty and installation of mono piles at Pulau Sebarok
80/2019	Installation of floating sea barrier off Changi East
81/2019	Installation of floating sea barrier off PA Water-Venture (Pasir Ris)
82/2019	Dredging works off Sultan Shoal Lighthouse
83/2019	Works at Tuas Western Coast
85/2019	Reduced visibility in the Singapore Strait and Port Waters
86/2019	Haze alert - 24-hours PSI level 101 to 200

---

\*Source: Maritime and Port Authority of Singapore

**III**  
**AMENDMENTS TO PUBLICATIONS**

NIL

## IV

**REPRINT OF MARITIME SAFETY INFORMATION**

The following Maritime Safety Information have been shortlisted, as they would be of particular interest to mariners.

TT175

VESSELS IN EAST JOHOR STRAIT ARE ADVISED TO NAVIGATE WITH PARTICULAR ALERTNESS AND CAUTION WHEN NEAR THE PROJECT AREAS OFF PULAU TEKONG, CHANGI AND MALANG PAPAN AS SHALLOW WATER AREAS EXIST. VESSELS ARE REMINDED TO PROCEED AT A SAFE SPEED AND MAINTAIN A PROPER LOOK-OUT, PARTICULARLY FOR TUGS AND BARGES NAVIGATING NEAR THE PROJECT AREAS AND PASSENGER FERRIES CROSSING BETWEEN CHANGI AND PULAU TEKONG AND VICINITY OF PASIR GUDANG.

TT273

ALL VESSELS ARE ADVISED TO NAVIGATE WITH CAUTION, COMPLY WITH THE COLREGS, MAINTAIN VHF RADIO WATCH AND LISTEN TO TRAFFIC INFORMATION WHEN NAVIGATING IN THE SINGAPORE STRAIT AND PORT WATERS. MARINERS ARE ALSO ADVISED TO KEEP A GOOD LOOKOUT OF FREQUENT FERRIES CROSSING THE SINGAPORE STRAIT.

TT363 (AMENDED ON 140821UTC APR 2019).

MARINERS ARE REMINDED NOT TO ANCHOR IN ALL AREAS IN THE TSS, INCLUDING PRECAUTIONARY AREAS OF THE STRAITS OF MALACCA AND SINGAPORE AS WELL AS BETWEEN THE LANDWARD LIMITS OF THE TSS AND APPROACHES TO THE PORTS. VESSELS ENTERING ANY PORT IN ANY LITTORAL STATES ARE TO ANCHOR IN THE ANCHORAGES DESIGNATED BY THE RESPECTIVE LITTORAL STATES. MARINERS ARE ALSO REMINDED THAT EVERY CARE SHOULD BE TAKEN TO AVOID ANCHORING IN THE VICINITY OF SUBMARINE CABLES OR PIPELINES.

TT399

VESSELS ARRIVING TO SINGAPORE OR TRANSITING THROUGH THE STRAIT ARE RECOMMENDED TO UPDATE THEIR DESTINATION ACCURATELY IN THE AIS TO ENHANCE SITUATIONAL AWARENESS FOR OTHER TRAFFIC IN THE VICINITY. EG: SG-PEBGB FOR PILOT EASTERN BOARDING GROUND BRAVO.

TT418

WEST BOUND DEEP DRAFT VESSELS AND VLCCS ARE REMINDED TO COMPLY WITH THE RULES OF VESSELS NAVIGATING THROUGH THE STRAITS OF MALACCA AND SINGAPORE (SOMS). THEY SHALL ALLOW FOR AN UKC OF AT LEAST 3.5 METRES AT ALL TIMES DURING THE ENTIRE PASSAGE THROUGH THE SOMS AND AS FAR AS IT IS SAFE AND PRACTICABLE, PROCEED AT A SPEED OF NOT MORE THAN 12 KTS OVER THE GROUND IN THE WESTBOUND LANE OF THE SINGAPORE STRAIT (BETWEEN SOUTH OF ST JOHN'S ISLAND & RAFFLES LIGHTHOUSE). THEY ARE ADVISED TO BROADCAST, 8 HOURS BEFORE ENTERING THE TSS, NAVIGATIONAL INFORMATION GIVING NAME, DEADWEIGHT, DRAUGHT, SPEED AND TIMES OF PASSING HORSBURGH LIGHTHOUSE AND RAFFLES LIGHTHOUSE.

TT426

ALL MARINERS ARE REMINDED TO NAVIGATE WITH CAUTION IN THE PRECAUTIONARY AREAS AND TSS, MAINTAIN A GOOD LOOKOUT FOR CROSSING TRAFFIC. VESSELS INTENDING TO CROSS THE TSS SHALL DO SO ONLY WHEN IT IS SAFE AND SHALL AT ALL TIMES COMPLY WITH THE COLREGS.

TT440

A NUMBER OF UNKNOWN VESSELS ARE OBSERVED ANCHORED IN THE TSS/PRECAUTIONARY AREA SOUTH OF TG. RAMUNIA AT APPROXIMATE POSITION LAT 01° 17.91'N LONG 104° 14.92'E. ALL VESSELS ARE ADVISED TO KEEP A GOOD LOOK OUT AND PROCEED WITH CAUTION WHEN PASSING THIS AREA IN THE SINGAPORE STRAIT.

TT527

RACON DELTA RADAR SIGNAL TRANSMISSION IN POSITION LAT 01° 03.60'N LONG 103° 38.85'E IS REPORTED NOT WORKING. ALL VESSELS ARE ADVISED TO NAVIGATE WITH EXTRA CAUTION.

TT552 (AMENDED 291100UTC SEP 2019).

A TEMPORARY EXCLUSION ZONE HAS BEEN ESTABLISHED FOR WRECK REMOVAL OPERATIONS ON THE SUNKEN VESSEL THORCO CLOUD IN THE EASTBOUND LANE OF THE SINGAPORE STRAIT. OPERATION AREA IS ABOUT 1.7NM NE OF BATU BERHANTI BEACON AND INVOLVED WRECK REMOVAL VESSEL HONG BANG 6 (3FFP8).

THE 24 HOURS OPERATIONS ARE SCHEDULED FROM 18 JUN TO 30 SEP 2019. THE 400M WIDE WORKING AREA WILL BE MARKED BY THE FOLLOWING BUOYS (WGS84):

LAT (N)	LONG (E)	CARDINAL MARK	LIGHT (WHITE), RANGE (NM)
01° 12.258'N	103° 53.919'E	TC1 WEST	Q(9)10S, 6 NM
01° 12.488'N	103° 54.100'E	TC2 NORTH	Q, 6 NM
01° 13.051'N	103° 55.042'E	TC3 NORTH	Q, 6 NM – NOT IN POSITION
01° 12.270'N	103° 54.156'E	TC4 SOUTH	Q(6)+LFL10S, 6 NM
01° 12.801'N	103° 55.040'E	TC5 SOUTH	Q(6)+LFL10S, 6 NM

CHARTS AFFECTED: SP1/GSP1, 202, 502, BA4037 AND BA4041. MARINERS ARE ADVISED TO NAVIGATE WITH CAUTION AND KEEP CLEAR OF WORKING AREA.

## IV

### REPRINT OF MARITIME SAFETY INFORMATION

TT562

LAYING OF SUBSEA PIPELINE AT WEST JURONG CHANNEL AND PESEK BASIN FROM 20 JUN 2019 TO 30 OCT 2019. VESSELS ARE ADVISED TO NAVIGATE WITH CAUTION AND PROCEED AT SAFE SPEED IN THE AREA. PLEASE REFER TO PMN 059 OF 2019.

TT574

BANYAN BEACON AT LAT 01° 13.346'N LONG 103° 41.585'E IS UNLIT AND DAMAGED AND ISO DANGER BUOY HAVE BEEN INSTALLED AT LAT 01° 13.319'N LONG 103° 41.561'E. MARINERS ARE ADVISED TO NAVIGATE WITH CAUTION.

TT579

CONDUCTING OF SURVEY WORKS BOUNDED BY THE FOLLOWING COORDINATES FROM 10 SEP 2019 TO 03 NOV 2019.

A	01° 20.28'N	104° 24.29'E
B	01° 20.28'N	104° 24.79'E
C	01° 19.63'N	104° 24.79'E
D	01° 19.63'N	104° 24.13'E
E	01° 20.14'N	104° 24.13'E

VESSELS PASSING IN THE VICINITY ARE ADVISED TO GIVE A WIDE BERTH AND NAVIGATE WITH CAUTION.

TT580

TK (Takong KL) Isolated Danger buoy in position Lat 01° 05.8'N Long 103° 43.6'E unlit. MARINERS ARE ADVISED TO NAVIGATE WITH CAUTION.

TT581

REPORTS OF REDUCED VISIBILITY IN THE SINGAPORE STRAIT AND PORT WATERS DUE TO HAZE. ALL VESSELS ARE TO NAVIGATE WITH EXTRA CAUTION.

TT582

CABLE VESSEL ASEAN PROTECTOR IS CARRYING OUT CABLE LAYING WORKS FROM SOUTH OF TUAS VIEW EXTENSION AND INTO THE TSS AND PRECAUTIONARY AREA OF SECTOR 7 (VTIS WEST) OF THE SINGAPORE STRAIT FROM 30 SEP 2019 to 26 MAR 2020. VESSELS ARE ADVISED TO NAVIGATE WITH CAUTION, PROCEED AT SAFE SPEED AND KEEP WELL CLEAR OF THE CABLE VESSEL

TT583

BATU BERHANTI BUOY FL(2)5S AT POSITION LAT 01-11.76N LONG 103-52.51E IS REPORTED MISSING. MARINERS ARE ADVISED TO NAVIGATE WITH EXTRA CAUTION.

TT961

VESSELS INTENDING TO CROSS THE TRAFFIC SEPARATION SCHEME (TSS) OR PRECAUTIONARY AREAS IN THE SINGAPORE STRAIT DURING THE HOURS OF DARKNESS ARE RECOMMENDED TO DISPLAY THE NIGHT SIGNALS CONSISTING OF 3 ALL ROUND GREEN LIGHTS IN A VERTICAL LINE AS DETAILED IN THE MARITIME AND PORT AUTHORITY OF SINGAPORE'S PORT MARINE CIRCULAR, 04 OF 2013 DATED 7 MAY 2013.

SR123 (AMENDED ON 170105UTC APR 2019).

ALL VESSELS ARE ADVISED TO MAINTAIN A CONSTANT VISUAL AND RADAR WATCH FOR SMALL CRAFT AND REPORT ANY SUSPICIOUS ACTIVITIES IN THE SINGAPORE STRAIT TO VTIS SINGAPORE.

---

ISSUED BY SINGAPORE PORT OPERATIONS CONTROL CENTRE (as at 30<sup>th</sup> September 2019)



## V

# EXTRACT OF ADMIRALTY NOTICES TO MARINERS FOR DUAL-BADGED CHARTS

These notices can also be accessed directly from UKHO Website:

<http://www.admiralty.co.uk/maritime-safety-information/admiralty-notices-to-mariners>

## 4778\* SINGAPORE - Buoyage. Legends. Works.

Source: Maritime and Port Authority of Singapore

**Chart 4030** [ *previous update 3492/19* ] WGS84 DATUM

Delete maritime limit, pecked line, joining:

1° 15·705'N, 103° 38·709'E  
1° 15·706'N, 103° 38·851'E  
1° 15·273'N, 103° 39·026'E  
1° 15·160'N, 103° 39·130'E  
(a) 1° 14·633'N, 103° 39·342'E  
1° 14·419'N, 103° 39·370'E  
1° 13·164'N, 103° 39·876'E  
1° 13·030'N, 103° 39·515'E  
1° 13·116'N, 103° 39·482'E



*Fl.Y.5s HSPBV-MB3*

1° 15·570'N, 103° 38·467'E



*Fl.Y.5s HSPBV-MB3A*

1° 15·570'N, 103° 38·639'E



*Fl(2)R.7s F2-DDJV-3B*

(a) above

legend, Works in progress (2018), centred on:

1° 14·460'N, 103° 39·293'E

1° 13·334'N, 103° 39·638'E

**Chart 4031** [ *previous update 2586/19* ] WGS84 DATUM

Delete maritime limit, pecked line, joining:

1° 15·705'N, 103° 38·709'E  
1° 15·706'N, 103° 38·851'E  
1° 15·273'N, 103° 39·026'E  
1° 15·160'N, 103° 39·130'E  
(a) 1° 14·633'N, 103° 39·342'E  
1° 14·419'N, 103° 39·370'E  
1° 13·164'N, 103° 39·876'E  
1° 13·030'N, 103° 39·515'E  
1° 13·116'N, 103° 39·482'E



*Fl.Y.5s HSPBV-MB3A*

1° 15·570'N, 103° 38·639'E



*Fl(2)R.7s F2-DDJV-3B*

(a) above

legend, Works in progress (2018), centred on:

1° 14·460'N, 103° 39·293'E

1° 13·334'N, 103° 39·638'E

**Chart 4032** [ *previous update 3557/19* ] WGS84 DATUM

Replace *NW Sudong, with* *Fl(2)G.6s NW Sudong*

1° 13·149'N, 103° 43·026'E

**Chart 4033** [ *previous update 3492/19* ] WGS84 DATUM

Delete maritime limit, pecked line, joining:

1° 15·705'N, 103° 38·709'E  
1° 15·706'N, 103° 38·851'E  
1° 15·273'N, 103° 39·026'E  
1° 15·160'N, 103° 39·130'E  
1° 15·000'N, 103° 39·194'E

**V**  
**EXTRACT OF ADMIRALTY NOTICES TO MARINERS**  
**FOR DUAL-BADGED CHARTS**

These notices can also be accessed directly from UKHO Website:

<http://www.admiralty.co.uk/maritime-safety-information/admiralty-notices-to-mariners>

Delete  *Fl.Y.5s HSPBV-MB3* 1° 15.570'N, 103° 38.467'E  
 *Fl.Y.5s HSPBV-MB3A* 1° 15.570'N, 103° 38.639'E

**4755(T)/19 SINGAPORE - Submarine cable. Works. Buoyage.**

Source: Maritime and Port Authority of Singapore Notice 5/88(T)/19

1. Cable works are taking place within an area bounded by the following positions:

1°28.59'N, 103°48.15'E

1°28.14'N, 103°48.18'E

1°28.21'N, 103°48.57'E

1°28.70'N, 103°48.66'E

2. \*The following light-bouys have been moved:

**Designation**

**New Position**

*Denman Shoal*

1°28.56'N, 103°48.48'E

*Senoko A*

1°28.59'N, 103°48.52'E

3. Mariners are advised to navigate with caution in the area and consult the local port authorities for the latest information.

4. Former Notice 1332(T)/19 is cancelled.

\*Indicates new or revised entry.

(WGS84 DATUM)

**Chart affected - 4044**

**4768(P)/19 SINGAPORE - Works. Buoy.**

Source: Maritime and Port Authority of Singapore Notices 5/34-35/19

1. The works area joining the following positions has been removed:

1°13.70'N, 103°39.66'E

1°13.16'N, 103°39.88'E

1°13.03'N, 103°39.52'E

1°13.12'N, 103°39.48'E

2. The NW Sudong buoy in position 1°13.15'N, 103°43.03'E is now lit and has a characteristic of *Fl(2)G.6s*

3. Charts 4030, 4031, 4032 and 4040 will be updated by Notice to Mariners.

These changes will be included in a New Edition of Chart 4039 to be published late 2019.

(WGS84 DATUM)

**Chart affected - 4039**

---

Update to Admiralty Notices to Mariners No. 39 of 2019 dated 26<sup>th</sup> September 2019

## **HYDROGRAPHIC NOTE - Instructions**

1. Mariners are requested to notify the Chief Hydrographer, Maritime and Port Authority of Singapore, when new or suspected dangers to navigation are discovered, changes are observed in aids to navigation or where corrections to nautical publications may be necessary. Reports, which cannot be confirmed or are lacking in certain details should not be withheld.
2. Any ambiguities of time, positioning and depth should be stressed and any firm expectation of being able to check the information provided on a following voyage should be mentioned.
3. Mariners using satellite position fixing systems, eg. GPS, should provide details of equipment and datum used (where applicable). Where bearings (true or magnetic) are taken visually or by radar to fix a position, it should include more than two objects in order to provide a check on its accuracy. A position may also be defined by bearing and distance from a conspicuous object eg. beacon, lighthouse etc.
4. The note should include a tracing or a digital image of the chart used and the details should be clearly marked.
5. Echo sounders frequently register greater depths than the advertised maximum depth for the equipment, eg. a trace appearing at 50 metres may be in fact be 550 metres or even 1050 metres for equipment whose maximum depth is 500 metres. Erroneous depths caused by 2nd transmission error can usually be recognised by the following:
  - (a) the tracing being weaker than normal for the depth registered,
  - (b) the trace appearing to pass through the transmission line,
  - (c) the feathery nature of the trace.
6. Upon receipt of a hydrographic note, a Notice to Mariners may be issued. The sender's vessel or name is quoted as the source unless the same information is also received in foreign Notices to Mariners.
7. Reports of shoals, uncharted dangers and defects in aids to navigation may also be made to the appropriate Singapore Port Operations Control Centre on VHF Channels 10, 12, 14, 68 or 73.

## HYDROGRAPHIC NOTE

To:

Chief Hydrographer  
Maritime and Port Authority of Singapore  
7B Keppel Road #20-00 Tanjong Pagar Complex  
Singapore 089055

Tel : (65) 6325 2027  
Fax : (65) 6226 1076  
Email : [hydrographic@mpa.gov.sg](mailto:hydrographic@mpa.gov.sg)

### **Sender's Contact Details** :

Date : .....

Name of Vessel : .....

Address of Sender : .....

Tel : ..... Fax : .....

Email : .....

### **Nature of Observation** :

General Location : .....

Subject : .....

Position : Lat. .... Long. ....

Charts Used : .....

Date & Time of Observation : .....

Details : .....  
.....  
.....

Attachment : .....

### **Equipment Used** :

Type of Position Fixing : ..... GPS / DGPS ..... Others : .....

Type of Echo Sounder : .....

Name and Signature : .....

Ship's/Company's Stamp : .....