



## SINGAPOREAN NOTICES TO MARINERS

SECTION	CONTENT	Page
I	Affected Charts & Publications	1
II	New Charts and Publications	3
	Notices to Mariners and Chart Corrections	10
	Temporary and Preliminary Notices	11
III	Navigational Information	13
	Amendments to Publications	14
IV	Reprint of Maritime Safety Information	15
V	Extract of Admiralty Notices to Mariners for Dual-Badged Charts	17

The monthly Notices to Mariners contain information required to keep charts and publications published by the Hydrographic Division, Maritime and Port Authority of Singapore up-to-date.

Mariners are requested to notify the Chief Hydrographer, Maritime and Port Authority of Singapore, immediately of the discovery of new or suspected dangers to navigation, observed changes to aids to navigation and ways Singaporean Charts and Publications can be improved. The Hydrographic Note on the back page should be used for this purpose.

Detailed information of charts and publications (coverage of charts, latest editions and distributors) are available on the Maritime and Port Authority Website: [www.mpa.gov.sg](http://www.mpa.gov.sg)

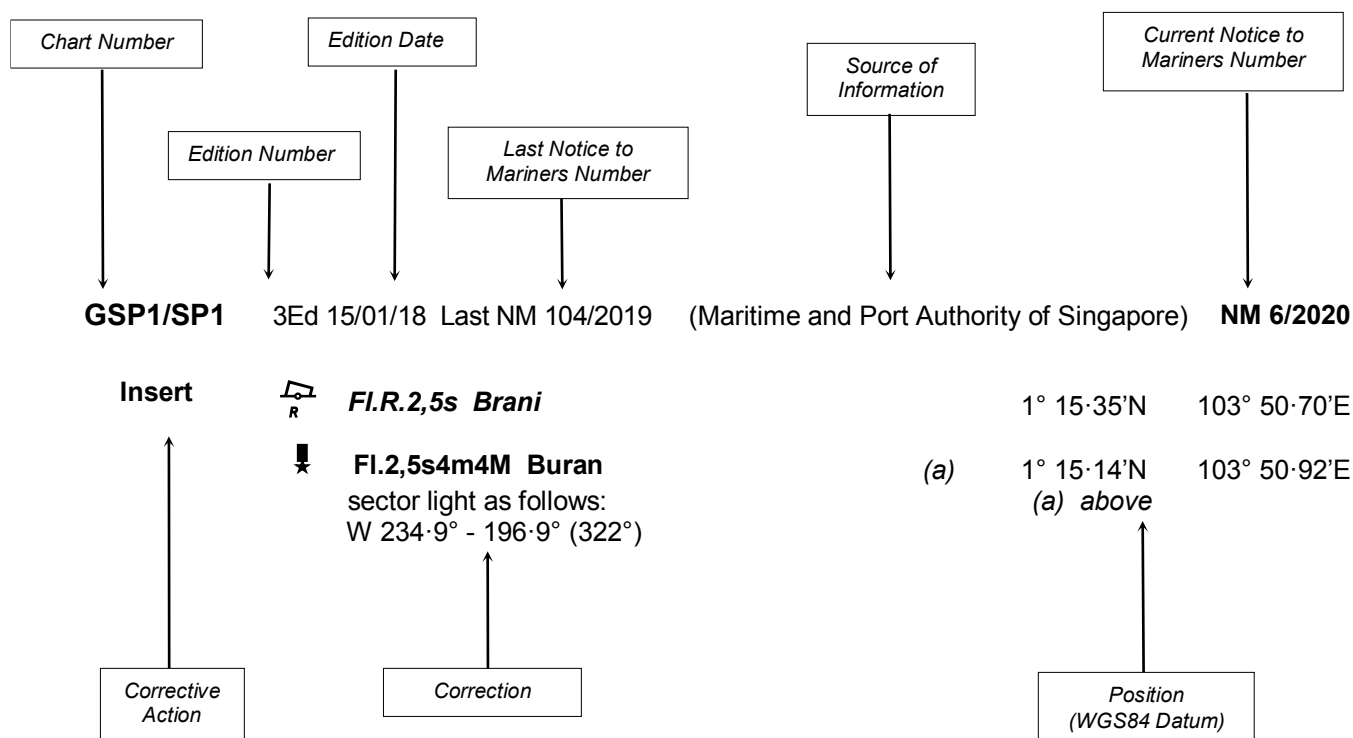
- [Singaporean Notice to Mariners](#)
- [Singaporean Charts](#)
- [Dual-Badged Charts](#)
- [Singaporean ENC](#)
- [Malacca and Singapore Straits ENC](#)
- [Singapore Port Information](#)
- [Singapore Tide Tables](#)

### Contact information:

Hydrographic Division  
Maritime and Port Authority of Singapore  
7B Keppel Road  
#20-00 Tanjong Pagar Complex  
Singapore 089055  
Tel : (65) 6325 2027  
Fax : (65) 6226 1076  
Email : [hydrographic@mpa.gov.sg](mailto:hydrographic@mpa.gov.sg)

## EXPLANATION OF FORMAT

The elements of a typical chart correction are explained below.



### Notes:

- a) Notice to Mariners number followed by:  
**T** indicates a Temporary Notice (eg. **NM 9T/2020**).  
**P** indicates a Preliminary Notice (eg. **NM 10P/2020**).
- b) Bearings are true reckoned clockwise from 000° to 359°; those relating to lights are from seaward.
- c) Heights and elevations are above Mean High Water Springs.
- d) # indicates where amendments are made.
- e) \* indicates source from Maritime and Port Authority of Singapore.

I  
**AFFECTED CHARTS AND PUBLICATIONS**

**INDEX OF NOTICES**

<b>DESCRIPTION</b>	<b>NOTICE NO.</b>	<b>PAGE NO.</b>
New Charts and Publications	-	3 - 9
Singaporean Chart GSP1/SP1	*64, *65	10
Singaporean Chart 500	66	10
Singaporean Chart 502	67	10
Singaporean Chart 503	67	10
Temporary and Preliminary Notices	*68	11 - 12
Singapore Port Marine Notices/Circulars	*69	13
Amendments to Publications	*70	14
Reprint of Maritime Safety Information	-	15 - 16
Extract of Admiralty Notices to Mariners for Dual-Badged Charts	-	17 - 19

\*Source : Maritime and Port Authority of Singapore

I  
**AFFECTED CHARTS AND PUBLICATIONS**

**INDEX OF NOTICES**

<b>NOTICE NO.</b>	<b>DESCRIPTION</b>	<b>PAGE NO.</b>
-	New Charts and Publications	3 - 9
*64, *65	Singaporean Chart GSP1/SP1	10
66	Singaporean Chart 500	10
67	Singaporean Chart 502	10
67	Singaporean Chart 503	10
*68	Temporary and Preliminary Notices	11 - 12
*69	Singapore Port Marine Notices/Circulars	13
*70	Amendments to Publications	14
-	Reprint of Maritime Safety Information	15 - 16
-	Extract of Admiralty Notices to Mariners for Dual-Badged Charts	17 - 19

\*Source : Maritime and Port Authority of Singapore

## II

### NEW CHARTS AND PUBLICATIONS

#### SINGAPORE TIDE TABLES YEAR 2021 PUBLISHED ON 15<sup>TH</sup> SEPTEMBER 2020

##### Summary of Publication

This publication contains Tidal Height and Tidal Stream Predictions covering stations in Singapore Port Waters and along the Straits of Malacca and Singapore.



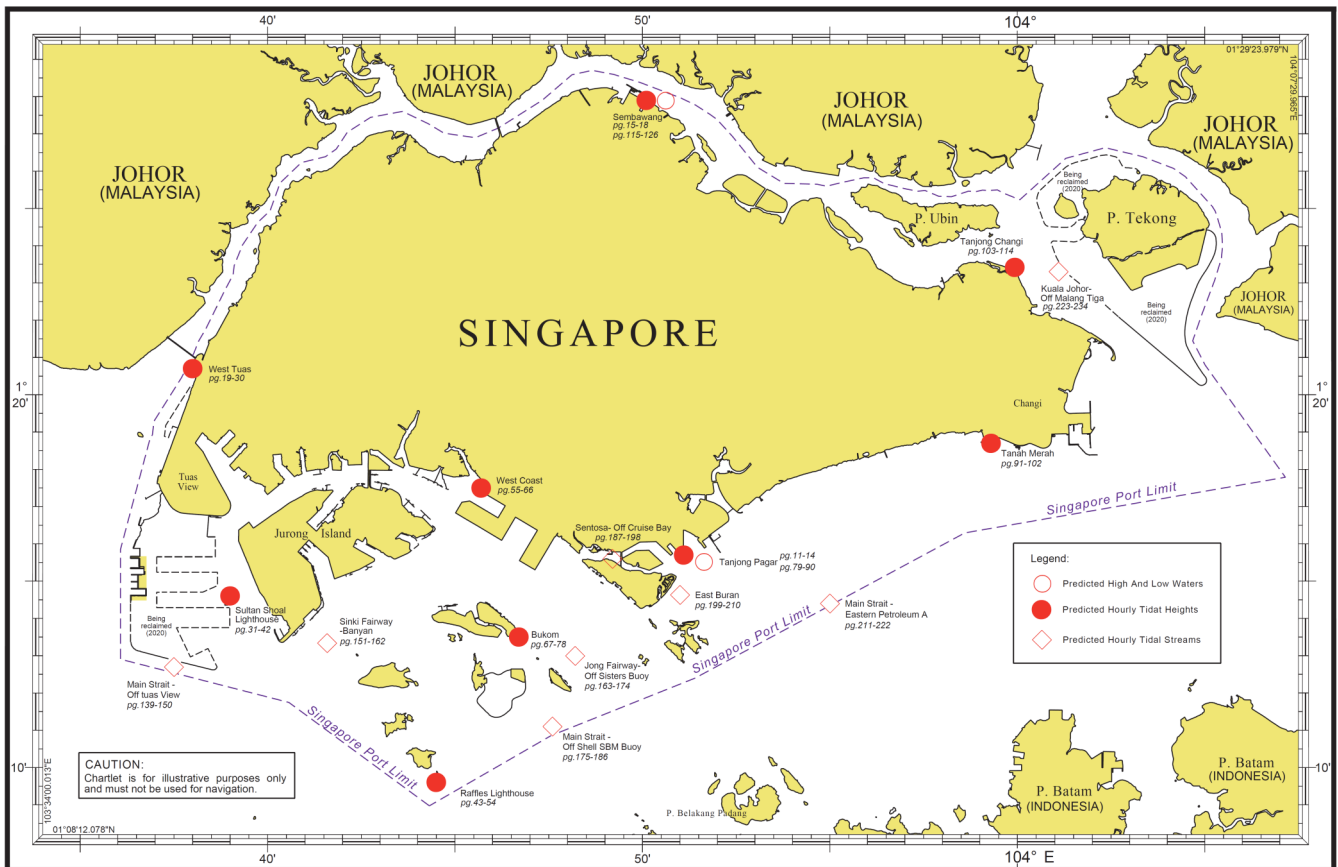
This publication consists of 5 segments.

1. **High and Low Water Predictions** at the following stations:
  - a) Tanjong Pagar
  - b) Sembawang
2. **Hourly Tidal Height Predictions** at the following stations:
  - a) West Tuas
  - b) Sultan Shoal Lighthouse
  - c) Raffles Lighthouse
  - d) West Coast
  - e) Bukom
  - f) Tanjong Pagar
  - g) Tanah Merah
  - h) Tanjong Changi
  - i) Sembawang
  - j) Singapore Strait - Horsburgh Lighthouse
3. **Hourly Tidal Stream Predictions** at the following stations:
  - a) Main Strait - off Tuas View
  - b) Sinki Fairway - Banyan
  - c) Jong Fairway - off Sisters Buoy
  - d) Main Strait - off Shell SBM Buoy
  - e) Sentosa - off Cruise Bay
  - f) East Buran
  - g) Main Strait - Eastern Petroleum A
  - h) Kuala Johor - off Malang Tiga
4. **Maximum and Slack Tidal Stream Predictions** at the following stations:
  - a) Malacca Strait - off Pulau Iyu Kecil Light
  - b) Singapore Strait - Selat Phillip
  - c) Singapore Strait - Karang Banteng (Buffalo Rock)
  - d) Singapore Strait - Horsburgh Lighthouse
5. **Malacca Strait - High and Low Water Predictions** at the following stations:
  - a) Kedah Pier, Pulau Pinang
  - b) Port Dickson
  - c) Kuala Batu Pahat

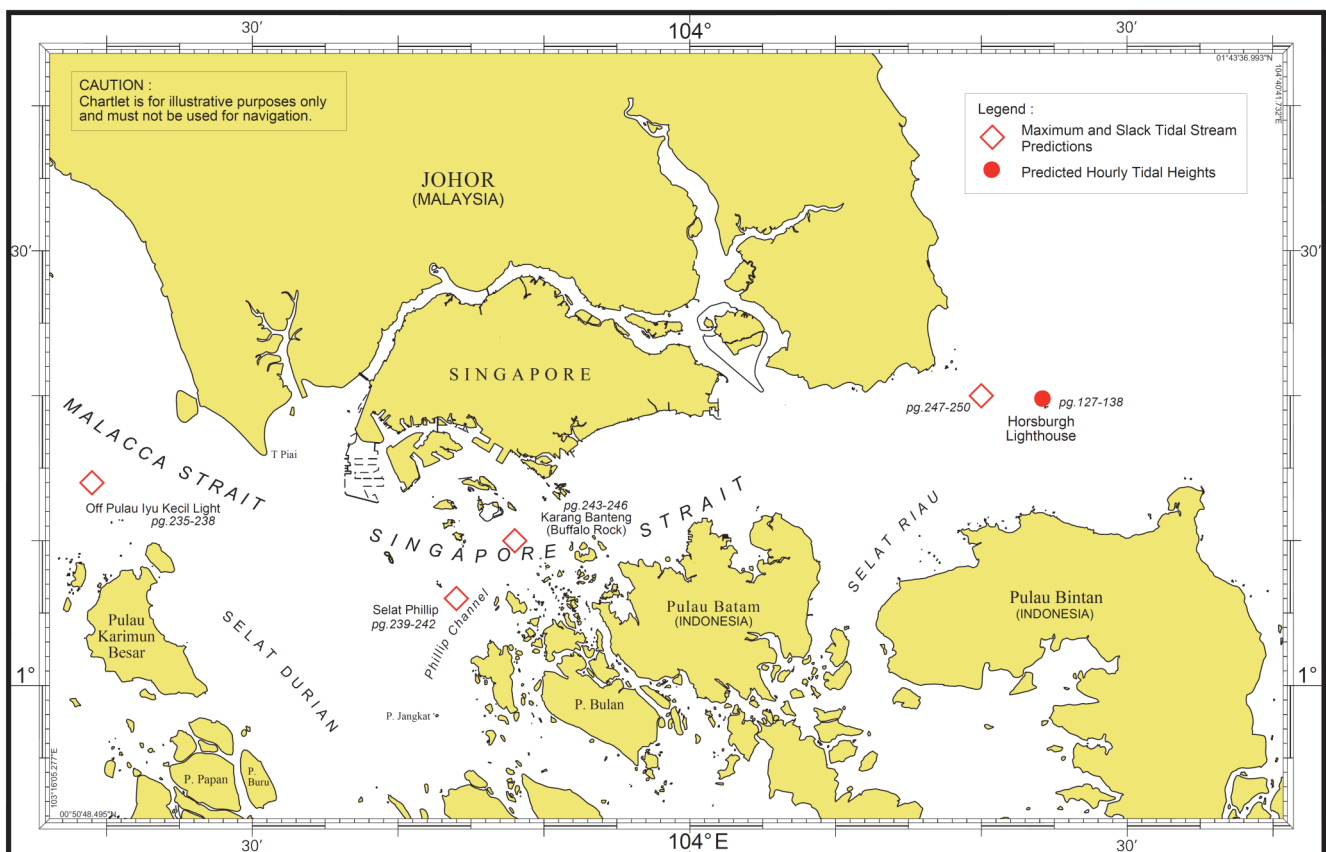
The locations of the above stations are shown in the chartlets below:

## II NEW CHARTS AND PUBLICATIONS

### Tidal Prediction Stations within Singapore Port Waters

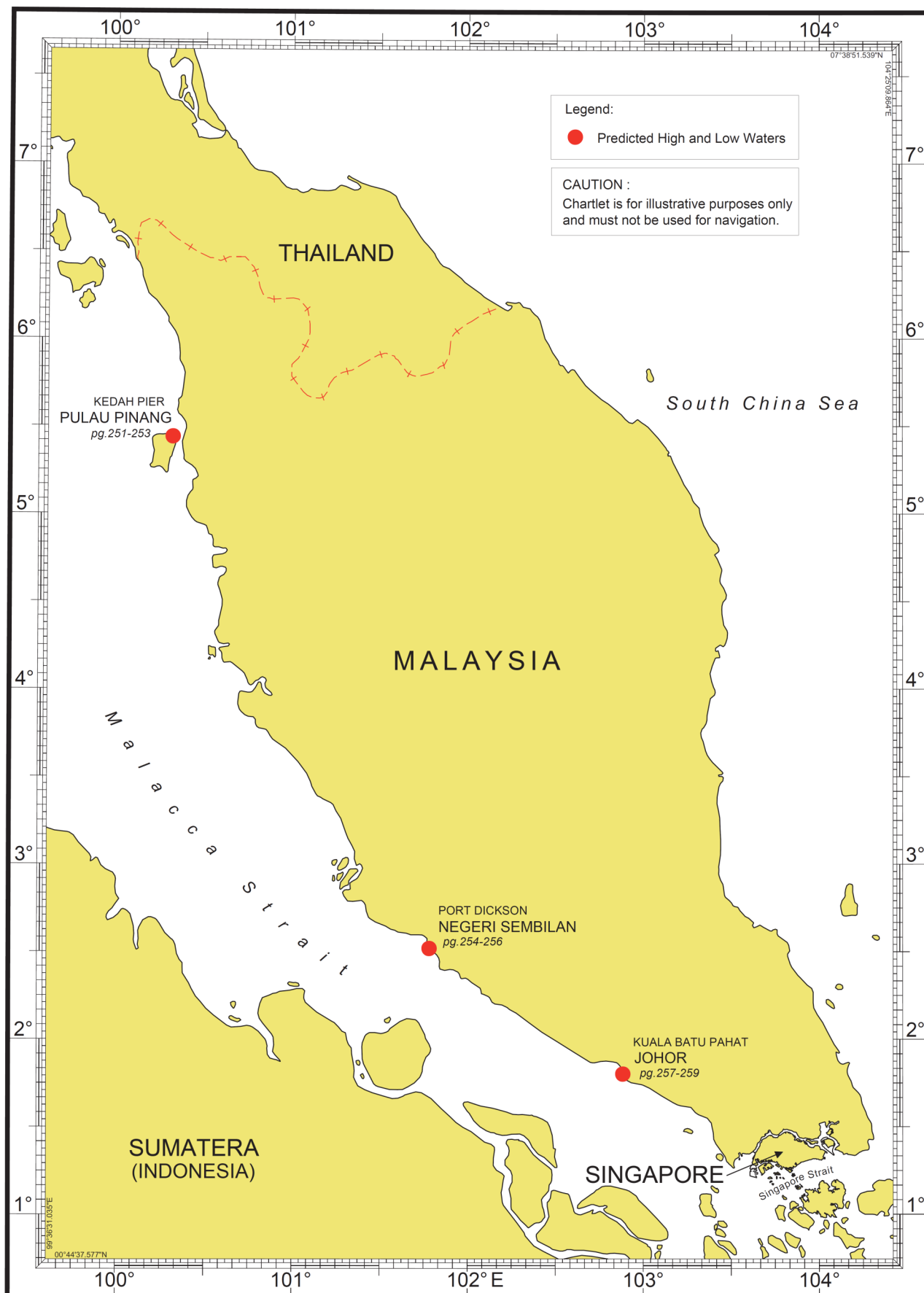


### Tidal Prediction Stations within Straits of Malacca and Singapore



## II NEW CHARTS AND PUBLICATIONS

### Tidal Prediction Stations In Malacca Strait



## II

## NEW CHARTS AND PUBLICATIONS

NEW EDITION DUAL BADGED CHARTS TO BE PUBLISHED ON 8<sup>TH</sup> OCTOBER 2020

<b>Chart Number</b>	: 4033
<b>Title</b>	: Port of Singapore Tuas Bay, West Jurong Channel and Pesek Basin
<b>Coverage</b>	: Lat      01° 15·00' N                      01° 19·05' N Long    103° 36·80' E                      103° 42·70' E
<b>Scale</b>	: 1 : 10 000
<b>Date to be Published</b>	: 8 <sup>th</sup> October 2020
<b>Size of Chart</b>	: 1094.4 x 746.4 mm
<b>Description</b>	: This new edition includes changes to aids to navigation, topography west of Jurong Island, working area off Temasek Fairway, new cable tunnel and pipeline of West Jurong Channel, updated surveys covering Temasek Fairway, West Jurong Channel, Tuas View Reclamation and Pesek Basin.

The existing chart of the same number published on 20<sup>th</sup> September 2018 will be superseded.

NEW EDITION DUAL BADGED CHARTS TO BE PUBLISHED ON 22<sup>ND</sup> OCTOBER 2020

<b>Chart Number</b>	: 4035
<b>Title</b>	: Port of Singapore Western Anchorages, Jong Fairway and Cruise Bay
<b>Coverage</b>	: Lat      01° 10·90' N                      01° 16·90' N Long    103° 45·50' E                      103° 49·54' E
<b>Scale</b>	: 1 : 10 000
<b>Date to be Published</b>	: 22 <sup>nd</sup> October 2020
<b>Size of Chart</b>	: 749.4 x 1105.7 mm
<b>Description</b>	: This new edition includes changes to aids to navigation, vertical clearance for Cruise Bay, shoreline east of Pulau Sebarok and Pulau Bukom, dredged depths of berths around Pasir Panjang and Pulau Bukom, updated surveys covering East Jurong Channel, Sinki Fairway, Jong Fairway, Southern Fairway, Pasir Panjang, Pulau Bukom, Selat Pauh, portion of Western Anchorage, south of Pulau Semakau and Pulau Sebarok.

The existing chart of the same number published on 20<sup>th</sup> September 2018 will be superseded.

<b>Chart Number</b>	: 4036
<b>Title</b>	: Port of Singapore Raffles Lighthouse to The Sisters
<b>Coverage</b>	: Lat      01° 09·40' N                      01° 13·47' N Long    103° 44·20' E                      103° 50·13' E
<b>Scale</b>	: 1 : 10 000
<b>Date to be Published</b>	: 22 <sup>nd</sup> October 2020
<b>Size of Chart</b>	: 1100.0 x 750.1 mm
<b>Description</b>	: This new edition includes changes to aids to navigation, shoreline east of Pulau Sebarok, dredged depths of berths around Pulau Sebarok, updated surveys covering, Jong Fairway, Southern Fairway, south of Pulau Bukom, Selat Pauh, south of Raffles Reserved Anchorage, west and south of Pulau Semakau, south of Pulau Sebarok, Pulau Satumu and Main Strait.

The existing chart of the same number published on 20<sup>th</sup> September 2018 will be superseded.



## II

### NEW CHARTS AND PUBLICATIONS

**Chart Number** : 4037

**Title** : Port of Singapore  
Keppel Harbour, Tanjong Pagar Terminal and approaches

**Coverage** : Lat 01° 12·52' N 01° 16·59' N  
Long 103° 49·40' E 103° 55·34' E

**Scale** : 1 : 10 000

**Date to be Published** : 22<sup>nd</sup> October 2020

**Size of Chart** : 1101.8 x 750.1 mm

**Description** : This new edition includes changes to aids to navigation, dredged depth of berth at Marina Bay Cruise centre, updated surveys covering East Keppel Fairway, Southern Fairway, Buran Channel, south of Marina South, East Holding A Anchorage and west bound lane of Traffic Separation Scheme.

The existing chart of the same number published on 20<sup>th</sup> September 2018 will be superseded.

#### NEW EDITION DUAL BADGED CHARTS TO BE PUBLISHED ON 29<sup>TH</sup> OCTOBER 2020

**Chart Number** : 4030

**Title** : Port of Singapore  
West Jurong Anchorages and Temasek Fairway

**Coverage** : Lat 01° 11·05' N 01° 17·00' N  
Long 103° 36·70' E 103° 40·70' E

**Scale** : 1 : 10 000

**Date to be Published** : 29<sup>th</sup> October 2020

**Size of Chart** : 742.0 x 1096.5 mm

**Description** : This new edition includes changes to aids to navigation, topography west of Jurong Island, reclamation profile, working area, new berth and submarine cables off Tuas View Extension, updated surveys covering Tuas View Extension, Temasek Fairway and westbound lane of the Traffic Separation Scheme.

The existing chart of the same number published on 20<sup>th</sup> September 2018 will be superseded.

**Chart Number** : 4031

**Title** : Port of Singapore  
Western Approaches to Jurong Island

**Coverage** : Lat 01° 10·15' N 01° 16·12' N  
Long 103° 38·50' E 103° 42·53' E

**Scale** : 1 : 10 000

**Date to be Published** : 29<sup>th</sup> October 2020

**Size of Chart** : 747.6 x 1100.2 mm

**Description** : This new edition includes changes to aids to navigation, topography west of Jurong Island, reclamation profile, working area, new berth and submarine cables off Tuas View Extension, updated surveys covering Tuas view Extension, Temasek Fairway, portion of Sinki Fairway and westbound lane of the Traffic Separation Scheme.

The existing chart of the same number published on 20<sup>th</sup> September 2018 will be superseded.

## II

### NEW CHARTS AND PUBLICATIONS

#### NEW EDITION SINGAPORE ENC TO BE RELEASED ON 8<sup>TH</sup> OCTOBER 2020

<b>ENC Name</b>	: SG5C4033
<b>Location</b>	: Tuas Bay, West Jurong Channel and Pesek Basin
<b>Coverage</b>	: Lat      01° 16·300' N              01° 19·050' N Long    103° 38·000' E              103° 42·700' E
<b>Compilation Scale</b>	: 1 : 8 000
<b>Date to be Released</b>	: 8 <sup>th</sup> October 2020
<b>Description</b>	: This new edition includes changes to aids to navigation, topography west of Jurong Island, new pipeline of West Jurong Channel, updated surveys covering West Jurong Channel and Pesek Basin.
	The existing cell of the same name released on 20 <sup>th</sup> September 2018 will be superseded.

---

#### NEW EDITION SINGAPORE ENC TO BE RELEASED ON 22<sup>ND</sup> OCTOBER 2020

<b>ENC Name</b>	: SG5C4035
<b>Location</b>	: Western Anchorages, Jong Fairway and Cruise Bay
<b>Coverage</b>	: Lat      01° 10·900' N              01° 16·900' N Long    103° 45·580' E              103° 49·425' E
<b>Compilation Scale</b>	: 1 : 8 000
<b>Date to be Released</b>	: 22 <sup>nd</sup> October 2020
<b>Description</b>	: This new edition includes changes to aids to navigation, vertical clearance for Cruise Bay, shoreline east of Pulau Sebarok and Pulau Bukom, dredged depths of berths around Pasir Panjang and Pulau Bukom, updated surveys covering East Jurong Channel, Sinki Fairway, Jong Fairway, Southern Fairway, Pasir Panjang, Pulau Bukom, Selat Pauh, portion of Western Anchorage, south of Pulau Semakau and Pulau Sebarok.
	The existing cell of the same name released on 20 <sup>th</sup> September 2018 will be superseded.

---

<b>ENC Name</b>	: SG5C4036
<b>Location</b>	: Raffles Lighthouse to The Sisters
<b>Coverage</b>	: Lat      01° 09·400' N              01° 12·520' N Long    103° 44·200' E              103° 50·130' E
<b>Compilation Scale</b>	: 1 : 8 000
<b>Date to be Released</b>	: 22 <sup>nd</sup> October 2020
<b>Description</b>	: This new edition includes changes to aids to navigation, updated surveys covering Southern Fairway, south of Pulau Bukom, south of Raffles Reserved Anchorage, west and south of Pulau Semakau, Pulau Satumu and Main Strait.
	The existing cell of the same name released on 20 <sup>th</sup> September 2018 will be superseded.

## II

### NEW CHARTS AND PUBLICATIONS

**ENC Name** : SG5C4037

**Location** : Keppel Harbour, Tanjong Pagar Terminal and Approaches

**Coverage** : Lat 01° 12'520" N 01° 16'590" N  
Long 103° 49'425" E 103° 55'340" E

**Compilation Scale** : 1 : 8 000

**Date to be Released** : 22<sup>nd</sup> October 2020

**Description** : This new edition includes changes to aids to navigation, dredged depth of berth at Marina Bay Cruise centre, updated surveys covering East Keppel Fairway, Southern Fairway, Buran Channel, south of Marina South, East Holding A Anchorage and west bound lane of Traffic Separation Scheme.

The existing cell of the same name released on 20<sup>th</sup> September 2018 will be superseded.

#### NEW EDITION SINGAPORE ENC TO BE RELEASED ON 29<sup>TH</sup> OCTOBER 2020

**ENC Name** : SG5C4030

**Location** : Western Jurong Anchorages and Temasek Fairway

**Coverage** : Lat 01° 11'050" N 01° 16'300" N  
Long 103° 36'700" E 103° 40'640" E

**Compilation Scale** : 1 : 8 000

**Date to be Released** : 29<sup>th</sup> October 2020

**Description** : This new edition includes changes to aids to navigation, topography west of Jurong Island, reclamation profile, working area, new berth and submarine cables off Tuas View Extension, updated surveys covering Tuas View Extension, Temasek Fairway and westbound lane of the Traffic Separation Scheme.

The existing cell of the same name released on 20<sup>th</sup> September 2018 will be superseded.

**ENC Name** : SG5C4031

**Location** : Western Approaches to Jurong Island

**Coverage** : Lat 1° 10'150" N 01° 12'250" N  
Long 103° 38'500" E 103° 42'530" E

**Compilation Scale** : 1 : 8 000



**Date to be Released** : 29<sup>th</sup> October 2020

**Description** : This new edition includes changes to aids to navigation, updated surveys covering westbound lane of the Traffic Separation Scheme.

The existing cell of the same name released on 20<sup>th</sup> September 2018 will be superseded.

## II

### NOTICES TO MARINERS AND CHART CORRECTIONS

<b>GSP1/SP1</b>	4 Ed 15/02/20 Last NM 55/2020	(Maritime and Port Authority of Singapore)	<b>NM 64/2020</b>
<b>Insert</b>	 <i>Obstn</i>	1°20'22'N	104°02'06'E
		(Maritime and Port Authority of Singapore)	<b>NM 65/2020</b>
<b>Insert</b>	submarine pipeline,  , joining:	1°18'02'N	103°41'55'E
		1°17'72'N	103°41'70'E
		1°17'66'N	103°41'74'E
		1°17'61'N	103°41'76'E
		1°17'48'N	103°41'86'E
		1°17'21'N	103°42'04'E
<hr/>			
<b>500</b>	8 Ed 15/09/20 Last NM 46/2020	(Admiralty Notice No. 40/4669/20)	<b>NM 66/2020</b>
<b>Insert</b>	depth, $1_5$ , and extend 2m contour NW to enclose	(a) 1°18'50'N	103°26'69'E
	depth, $0_6$ , and extend 2m contour NW to enclose	(b) 1°18'06'N	103°26'71'E
<b>Delete</b>	depth, $4$ , close W of:	(a) above	
	depth, $2_1$ , close SW of:	(b) above	
<b>Replace</b>	depth, $3_4$ , with depth, $0_8$ , extend 2m contour E to enclose	1°20'20'N	103°26'00'E
<hr/>			
<b>502</b>	8 Ed 12/09/19 Last NM 57/2020	(Indonesian Notice to Mariners Notice No. 35/429/2020)	<b>NM 67/2020</b>
<b>Insert</b>	limit of anchorage area, pecked line, joining:	1°07'00'N	104°10'33'E
		(chart border)	
		1°08'26'N	104°11'69'E
		1°08'26'N	104°12'14'E
		1°07'00'N	104°11'91'E
		(chart border)	
<hr/>			
<b>503</b>	5 Ed 15/08/14 Last NM 58/2020	(Indonesian Notice to Mariners Notice No. 35/429/2020)	<b>NM 67/2020</b>
<b>Insert</b>	limit of anchorage area, pecked line, joining:	1°08'26'N	104°11'89'E
		(chart border)	
		1°08'26'N	104°12'14'E
		1°06'87'N	104°11'89'E
		(chart border)	

## II

## TEMPORARY AND PRELIMINARY NOTICES

**\*(NM 68P/2020) WEST JURONG CHANNEL - JURONG ISLAND - SUBSEA PIPELINE**

1. A subsea pipeline has been laid joining the following positions:

1°18·021'N,	103°41·549'E
1°17·722'N,	103°41·703'E
1°17·661'N,	103°42·736'E
1°17·614'N,	103°41·765'E
1°17·476'N,	103°41·859'E
1°17·211'N,	103°42·042'E
2. These changes will be included in the New Edition Dual-badged BA4033 to be published on 8 October 2020, and next New Edition of Dual-badged BA4040.

*Note: Former Notice 20P/2020 has been cancelled.*

---

Source : Maritime and Port Authority of Singapore

## II

**TEMPORARY AND PRELIMINARY NOTICES****Cancelled Temporary and Preliminary Notices**

<i>No. of Notice</i>	<i>Subject</i>	<i>Charts affected</i>
20P/2020	West Jurong Channel - Jurong Island - Subsea Pipeline	Singaporean GSP1/SP1, 202, 500 Dual-Badged BA4033 and BA4040

### III NAVIGATIONAL INFORMATION

\*(NM 69/2020)

#### SINGAPORE PORT MARINE NOTICES / CIRCULARS

The Port Marine Notices/Circulars shortlisted below would be of particular interest to Mariners. Details and complete list of Port Marine Notices/Circulars are available at this link:

<https://www.mpa.gov.sg/web/portal/home/port-of-singapore/circulars-and-notices>

#### PMC No.

#### Subject

35/2020

Advisory for Marine Service Providers attending to vessels at anchorages and terminals in the Port of Singapore

36/2020

Enhancement to crew change for cargo ships in the Port of Singapore

#### PMN No.

#### Subject

56/2020

Jetty repair works in Banyan Basin

59/2020

Construction of jetty at West Jurong Channel

60/2020

Marine soil investigation works at West Jurong Channel

---

\*Source: Maritime and Port Authority of Singapore

### III AMENDMENTS TO PUBLICATIONS

\*(NM 70/2020) UPDATING OF PUBLICATION “SINGAPORE PORT INFORMATION 2020/2021”

#### CHARACTERISTICS OF AIDS TO NAVIGATION

1. Page 135

##### **WEST JURONG CHANNEL**

Insert the following:

<b>Name of Beacon/ Buoy</b>	<b>Position Lat. N Long. E Deg Min</b>	<b>Structure, Colour &amp; Shape</b>	<b>Light Characteristic</b>	<b>Owner</b>
MB1 buoy	01°17·672' 103°42·647'	Yellow pillar with 'X' topmark	Fl.Y.3s(sync)	PCG
MB2 buoy	01°17·886' 103°42·647'	Yellow pillar with 'X' topmark	Fl.Y.3s(sync)	PCG

2. Page 144

##### **BURAN CHANNEL**

Amend the following:

<b>Name of Beacon/ Buoy</b>	<b>Position Lat. N Long. E Deg Min</b>	<b>Structure, Colour &amp; Shape</b>	<b>Light Characteristic</b>	<b>Owner</b>
PCG A Buoy	01°14·431' 103°50·453'	<b>Red can topmark on red can with one broad green horizontal band</b>	Fl(2+1)R.12s(sync)	PCG
PCG B Buoy	01°14·493' 103°50·514'	<b>Green conical topmark on green conical with one broad red horizontal band</b>	Fl(2+1)G.12s(sync)	PCG



## IV

**REPRINT OF MARITIME SAFETY INFORMATION**

The following Maritime Safety Information have been shortlisted, as they would be of particular interest to mariners.

## TT175

VESSELS IN EAST JOHOR STRAIT ARE ADVISED TO NAVIGATE WITH PARTICULAR ALERTNESS AND CAUTION WHEN NEAR THE PROJECT AREAS OFF PULAU TEKONG, CHANGI AND MALANG PAPAN AS SHALLOW WATER AREAS EXIST. VESSELS ARE REMINDED TO PROCEED AT A SAFE SPEED AND MAINTAIN A PROPER LOOK-OUT, PARTICULARLY FOR TUGS AND BARGES NAVIGATING NEAR THE PROJECT AREAS AND PASSENGER FERRIES CROSSING BETWEEN CHANGI AND PULAU TEKONG AND VICINITY OF PASIR GUDANG.

## TT273

ALL VESSELS ARE ADVISED TO NAVIGATE WITH CAUTION, COMPLY WITH THE COLREGS, MAINTAIN VHF RADIO WATCH AND LISTEN TO TRAFFIC INFORMATION WHEN NAVIGATING IN THE SINGAPORE STRAIT AND PORT WATERS. MARINERS ARE ALSO ADVISED TO KEEP A GOOD LOOKOUT OF FREQUENT FERRIES CROSSING THE SINGAPORE STRAIT.

## TT363 (AMENDED ON 140821UTC APRIL 2019).

MARINERS ARE REMINDED NOT TO ANCHOR IN ALL AREAS IN THE TSS, INCLUDING PRECAUTIONARY AREAS OF THE STRAITS OF MALACCA AND SINGAPORE AS WELL AS BETWEEN THE LANDWARD LIMITS OF THE TSS AND APPROACHES TO THE PORTS. VESSELS ENTERING ANY PORT IN ANY LITTORAL STATES ARE TO ANCHOR IN THE ANCHORAGES DESIGNATED BY THE RESPECTIVE LITTORAL STATES. MARINERS ARE ALSO REMINDED THAT EVERY CARE SHOULD BE TAKEN TO AVOID ANCHORING IN THE VICINITY OF SUBMARINE CABLES OR PIPELINES.

## TT399

VESSELS ARRIVING TO SINGAPORE OR TRANSITING THROUGH THE STRAIT ARE RECOMMENDED TO UPDATE THEIR DESTINATION ACCURATELY IN THE AIS TO ENHANCE SITUATIONAL AWARENESS FOR OTHER TRAFFIC IN THE VICINITY. EG: SG-PEBGB FOR PILOT EASTERN BOARDING GROUND BRAVO.

## TT418

WEST BOUND DEEP DRAFT VESSELS AND VLCCS ARE REMINDED TO COMPLY WITH THE RULES OF VESSELS NAVIGATING THROUGH THE STRAITS OF MALACCA AND SINGAPORE (SOMS). THEY SHALL ALLOW FOR AN UKC OF AT LEAST 3.5 METRES AT ALL TIMES DURING THE ENTIRE PASSAGE THROUGH THE SOMS AND AS FAR AS IT IS SAFE AND PRACTICABLE, PROCEED AT A SPEED OF NOT MORE THAN 12 KTS OVER THE GROUND IN THE WESTBOUND LANE OF THE SINGAPORE STRAIT (BETWEEN SOUTH OF ST JOHN'S ISLAND & RAFFLES LIGHTHOUSE). THEY ARE ADVISED TO BROADCAST, 8 HOURS BEFORE ENTERING THE TSS, NAVIGATIONAL INFORMATION GIVING NAME, DEADWEIGHT, DRAUGHT, SPEED AND TIMES OF PASSING HORSBURGH LIGHTHOUSE AND RAFFLES LIGHTHOUSE.

## TT426

ALL MARINERS ARE REMINDED TO NAVIGATE WITH CAUTION IN THE PRECAUTIONARY AREAS AND TSS, MAINTAIN A GOOD LOOKOUT FOR CROSSING TRAFFIC. VESSELS INTENDING TO CROSS THE TSS SHALL DO SO ONLY WHEN IT IS SAFE AND SHALL AT ALL TIMES COMPLY WITH THE COLREGS.

## TT440

A NUMBER OF UNKNOWN VESSELS ARE OBSERVED ANCHORED IN THE TSS/PRECAUTIONARY AREA SOUTH OF TG. RAMUNIA AT APPROXIMATE POSITION LAT 01°17'91"N LONG 104°14'92"E. ALL VESSELS ARE ADVISED TO KEEP A GOOD LOOK OUT AND PROCEED WITH CAUTION WHEN PASSING THIS AREA IN THE SINGAPORE STRAIT.

## TT621(AMENDED ON 291430UTC MAY 2020).

OUTER SHOAL BEACON HAS BEEN TEMPORARILY REMOVED FOR REPAIR AND MAINTENANCE ON 29 MAY 2020. IT HAS BEEN REPLACED BY A GREEN CONICAL BUOY WITH LIGHT CHARACTERISTICS FL.G.5S AT POSITION LAT 01°15'012"N LONG 103°51'776"E. ALL VESSELS ARE TO NAVIGATE WITH CAUTION.

## TT641 (AMENDED ON 181430UTC MAY 2020).

CONTAINER VESSEL SHAHRAZ/EPBR2 WAS REPORTED GROUNDED AT BATU BERHANTI, APPROX POSITION LAT 01°11'283"N LONG 103°52'867"E ON 101905UTC MAY 2020. ALL VESSELS ARE ADVISED TO KEEP WELL CLEAR WHEN PASSING THE VICINITY.

## TT642

ALL MARINERS NAVIGATING THROUGH THE STRAIT OF SINGAPORE ARE REMINDED TO MAINTAIN CLOSE AND CONTINUOUS MONITORING OF VESSELS POSITION. IN DETERMINING RISK OF GROUNDING, DIFFERENT METHODS OF POSITION FIXING SHOULD ALSO BE USED AS MEANS OF CROSS-CHECKING.

## TT643

THERE IS REPORT OF CONCENTRATION OF FISHING VESSELS OBSERVED IN THE EASTBOUND TRAFFIC LANE IN THE VICINITY BETWEEN BUFFALO ROCK AND BATU BERHANTI. ALL VESSELS ARE ADVISED TO PROCEED AT A SAFE SPEED, KEEP A SHARP LOOK OUT AND NAVIGATE WITH EXTREME CAUTION AT ALL TIME.

## IV

### REPRINT OF MARITIME SAFETY INFORMATION

The following Maritime Safety Information have been shortlisted, as they would be of particular interest to mariners.

TT663

ISOLATED DANGER MARK BUOY MARKING THE WRECK OF PUTRI SEA IN POSITION LAT 01°17.88'N LONG 104°07.24'E, IS REPORTED MISSING. ALL VESSELS ARE ADVISED TO NAVIGATE WITH CAUTION AND MAINTAIN A GOOD LOOKOUT.

TT672

CONDUCTING OF SURVEY WORKS BOUNDED BY THE FOLLOWING COORDINATES FROM 5 SEP 2020 TO 30 NOV 2020.

A	1°19.63'N	104°24.13'E
B	1°20.14'N	104°24.13'E
C	1°20.28'N	104°24.29'E
D	1°20.28'N	104°24.51'E
E	1°20.06'N	104°24.78'E
F	1°19.63'N	104°24.73'E

VESSELS PASSING IN THE VICINITY ARE ADVISED TO GIVE A WIDE BERTH AND NAVIGATE WITH CAUTION.

TT680

REPORT OF PETTY THEFT ON 230001LT SEP 2020 IN POSITION LAT 01°15.40'N LONG 104°05.05'E. ALL VESSELS PASSING THE VICINITY ARE REQUESTED TO MAINTAIN A GOOD ANTI PIRACY WATCH.

TT961

VESSELS INTENDING TO CROSS THE TRAFFIC SEPARATION SCHEME (TSS) OR PRECAUTIONARY AREAS IN THE SINGAPORE STRAIT DURING THE HOURS OF DARKNESS ARE RECOMMENDED TO DISPLAY THE NIGHT SIGNALS CONSISTING OF 3 ALL ROUND GREEN LIGHTS IN A VERTICAL LINE AS DETAILED IN THE MARITIME AND PORT AUTHORITY OF SINGAPORE'S PORT MARINE CIRCULAR, 04 OF 2013 DATED 7 MAY 2013.

SR123 (AMENDED ON 100800UTC JUNE 2020).

SEA ROBBERIES ARE REPORTED IN THE SINGAPORE STRAIT. MARINERS ARE TO MAINTAIN A CONSTANT VISUAL AND RADAR WATCH FOR SMALL CRAFT AND REPORT ANY SUSPICIOUS ACTIVITIES IN THE SINGAPORE STRAIT TO VTIS SINGAPORE.

---

ISSUED BY SINGAPORE PORT OPERATIONS CONTROL CENTRE (as at 30<sup>th</sup> Sep 2020)

**V**  
**EXTRACT OF ADMIRALTY NOTICES TO MARINERS**  
**FOR DUAL-BADGED CHARTS**

These notices can also be accessed directly from UKHO Website:

<http://www.admiralty.co.uk/maritime-safety-information/admiralty-notices-to-mariners>

**4459 SINGAPORE - Buoyage.**

Source: Maritime and Port Authority of Singapore


**Chart 4034** [ *previous update 2599/20* ] WGS84 DATUM

Delete	 Fl.Y.10s AZ4	1°15·225'N	103°48·576'E
--------	--	------------	--------------

**Chart 4035** [ *previous update 3437/20* ] WGS84 DATUM

Delete	 Fl.Y.10s AZ4	1°15·225'N	103°48·576'E
--------	--	------------	--------------

	 Fl.Y.6s AZ2	1°15·034'N	103°48·967'E
--	---	------------	--------------

	 Fl.Y.8s AZ3	1°14·989'N	103°48·937'E
--	---	------------	--------------


**4476 SINGAPORE STRAIT - Wrecks.**

Source: Joint Hydrographic Survey of the Strait of Malacca and Singapore

**Chart 4030** [ *previous update 4002/20* ] WGS84 DATUM

Delete	 Wk	1°11·237'N	103°37·430'E
--------	--	------------	--------------

**Chart 4038** [ *previous update 4002/20* ] WGS84 DATUM

Replace	 Wk, with  Wk	1°11·25'N	103°35·42'E
---------	---	-----------	-------------

Delete	 Wk	1°11·24'N	103°37·43'E
--------	--	-----------	-------------

**Chart 4039** [ *previous update 3145/20* ] WGS84 DATUM

Replace	 Wk, with  Wk	1°11·25'N	103°35·42'E
---------	---	-----------	-------------

Delete	 Wk	1°11·24'N	103°37·43'E
--------	--	-----------	-------------

**Chart 4040** [ *previous update 4002/20* ] WGS84 DATUM

Replace	 Wk, with  Wk	1°11·25'N	103°35·42'E
---------	---	-----------	-------------

Delete	 Wk	1°11·24'N	103°37·43'E
--------	--	-----------	-------------

**V**  
**EXTRACT OF ADMIRALTY NOTICES TO MARINERS**  
**FOR DUAL-BADGED CHARTS**

These notices can also be accessed directly from UKHO Website:

<http://www.admiralty.co.uk/maritime-safety-information/admiralty-notices-to-mariners>

**4481 SINGAPORE - Light-beacon.**

Source: Maritime and Port Authority of Singapore

**Chart 4036** [ *previous update 1252/20* ] WGS84 DATUM

Insert		Oc(2)Y.8s JTC-R1	1°12·965'N	103°49·844'E
--------	---	------------------	------------	--------------

**Chart 4037** [ *previous update 3457/20* ] WGS84 DATUM

Insert		Oc(2)Y.8s JTC-R1	1°12·965'N	103°49·844'E
--------	---	------------------	------------	--------------

**4516 SINGAPORE - Mooring buoy.**

Source: Maritime and Port Authority of Singapore

**Chart 4032** [ *previous update 4002/20* ] WGS84 DATUM

Delete			1°13·526'N	103°45·256'E
--------	--	--	------------	--------------

**Chart 4039** [ *previous update 4476/20* ] WGS84 DATUM

Delete			1°13·53'N	103°45·26'E
--------	---	--	-----------	-------------

**Chart 4040** [ *previous update 4476/20* ] WGS84 DATUM

Delete			1°13·53'N	103°45·26'E
--------	---	--	-----------	-------------

**4519 SINGAPORE - Landmarks. Legend.**

Source: Maritime and Port Authority of Singapore

**Chart 4041** [ *previous update 4486/20* ] WGS84 DATUM

Insert	limit of tunnel, pecked line, joining:	1°16·88'N	103°52·49'E
		1°16·75'N	103°52·32'E
		and	
		1°16·86'N	103°52·52'E
		1°16·72'N	103°52·32'E
	legend, <i>Tunnel (buried)</i> , centred on:	1°16·91'N	103°52·56'E

**4492(P)/20 SINGAPORE - Depths.**

Source: UKHO

1. Depths less than charted are reported to exist within the General Purpose anchorage area (1°15·41'N, 103°34·02'E) and the Explosives and Hazardous Cargoes anchorage area (1°16·19'N, 103°35·17'E.)
2. Mariners are advised to navigate with caution in the area.
3. Charts will be updated when full details are available.  
(WGS84 DATUM)

**Charts affected - 4038 - 4040**

## V

## EXTRACT OF ADMIRALTY NOTICES TO MARINERS FOR DUAL-BADGED CHARTS

These notices can also be accessed directly from UKHO Website:

<http://www.admiralty.co.uk/maritime-safety-information/admiralty-notices-to-mariners>

### 4481 SINGAPORE - Light-beacon.

Source: Maritime and Port Authority of Singapore

#### Chart 4032 [ previous update 4516/20 ] WGS84 DATUM

Amend	dredged depth to, 10·5m (2019), centred on:	1°14·280'N	103°45·423'E
	dredged depth to, 5·5m (2020), centred on:	1°14·290'N	103°45·562'E
	dredged depth to, 13·0m (2019), centred on:	1°14·438'N	103°45·843'E
	dredged depth to, 13·1m (2019), centred on:	1°14·391'N	103°45·916'E
	dredged depth to, 16·4m (2019), centred on:	1°14·317'N	103°46·009'E
	dredged depth to, 13·6m (2019), centred on:	1°14·237'N	103°46·102'E
	dredged depth to, 8·3m (2019), centred on:	1°13·635'N	103°45·355'E

#### Chart 4035 [ previous update 4459/20 ] WGS84 DATUM

Amend	dredged depth to, 5·5m (2020), centred on:	1°14·289'N	103°45·562'E
	dredged depth to, 13·0m (2019), centred on:	1°14·438'N	103°45·846'E
	dredged depth to, 13·1m (2019), centred on:	1°14·391'N	103°45·917'E
	dredged depth to, 16·4m (2019), centred on:	1°14·316'N	103°46·011'E
	dredged depth to, 13·6m (2019), centred on:	1°14·224'N	103°46·117'E
	dredged depth to, 16·5m (2019), centred on:	1°14·144'N	103°46·226'E
	dredged depth to, 12·9m (2019), centred on:	1°14·050'N	103°46·320'E
	dredged depth to, 11·9m (2019), centred on:	1°13·974'N	103°46·400'E
	dredged depth to, 11·1m (2019), centred on:	1°13·879'N	103°46·495'E
	dredged depth to, 8·8m (2019), centred on:	1°13·819'N	103°46·553'E
	dredged depth to, 10·9m (2019), centred on:	1°13·760'N	103°46·609'E
	dredged depth to, 15·5m (2019), centred on:	1°13·674'N	103°46·690'E
	dredged depth to, 6·1m (2019), centred on:	1°13·643'N	103°46·672'E
	dredged depth to, 5·9m (2019), centred on:	1°13·672'N	103°46·645'E
	dredged depth to, 2·9m (2019), centred on:	1°13·688'N	103°46·628'E

### 4676(T)/20 MALAYSIA - Peninsular Malaysia, East Coast - Buoy.

Source: Marine Department, Malaysia Notice 143(T)/20

1. The PGI-6 special light-buoy, Fl. Y. 5s, in position 1°19·58'N, 104°09·80'E is reported destroyed.
2. Mariners are advised to navigate with caution in the area.  
(WGS84 DATUM)

**Charts affected - 4042 - 4043**

---

Updated to Notices to Mariners No. 40 of 2020 dated 01 October 2020

## **HYDROGRAPHIC NOTE - Instructions**

1. Mariners are requested to notify the Chief Hydrographer, Maritime and Port Authority of Singapore, when new or suspected dangers to navigation are discovered, changes are observed in aids to navigation or where corrections to nautical publications may be necessary. Reports, which cannot be confirmed or are lacking in certain details should not be withheld.
2. Any ambiguities of time, positioning and depth should be stressed and any firm expectation of being able to check the information provided on a following voyage should be mentioned.
3. Mariners using satellite position fixing systems, eg. GPS, should provide details of equipment and datum used (where applicable). Where bearings (true or magnetic) are taken visually or by radar to fix a position, it should include more than two objects in order to provide a check on its accuracy. A position may also be defined by bearing and distance from a conspicuous object eg. beacon, lighthouse etc.
4. The note should include a tracing or a digital image of the chart used and the details should be clearly marked.
5. Echo sounders frequently register greater depths than the advertised maximum depth for the equipment, eg. a trace appearing at 50 metres may be in fact be 550 metres or even 1050 metres for equipment whose maximum depth is 500 metres. Erroneous depths caused by 2nd transmission error can usually be recognised by the following:
  - (a) the tracing being weaker than normal for the depth registered,
  - (b) the trace appearing to pass through the transmission line,
  - (c) the feathery nature of the trace.
6. Upon receipt of a hydrographic note, a Notice to Mariners may be issued. The sender's vessel or name is quoted as the source unless the same information is also received in foreign Notices to Mariners.
7. Reports of shoals, uncharted dangers and defects in aids to navigation may also be made to the appropriate Singapore Port Operations Control Centre on VHF Channels 10, 12, 14, 68 or 73.

## HYDROGRAPHIC NOTE

To:

Chief Hydrographer  
Maritime and Port Authority of Singapore  
7B Keppel Road #20-00 Tanjong Pagar Complex  
Singapore 089055

Tel : (65) 6325 2027  
Fax : (65) 6226 1076  
Email : [hydrographic@mpa.gov.sg](mailto:hydrographic@mpa.gov.sg)

### **Sender's Contact Details** :

Date : .....

Name of Vessel : .....

Address of Sender : .....

Tel : ..... Fax : .....

Email : .....

### **Nature of Observation** :

General Location : .....

Subject : .....

Position : Lat. .... Long. ....

Charts Used : .....

Date & Time of Observation : .....

Details : .....

.....

.....

Attachment : .....

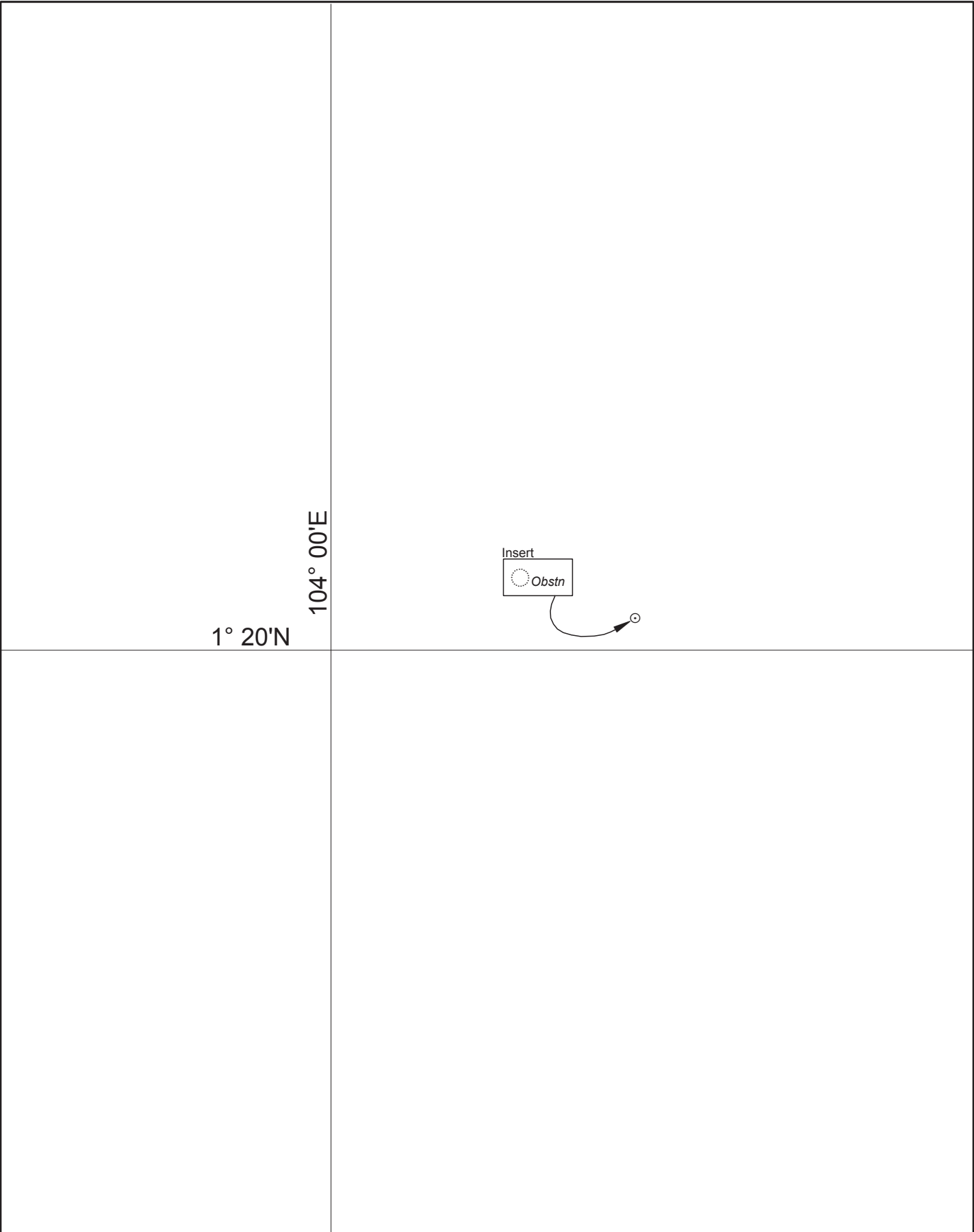
### **Equipment Used** :

Type of Position Fixing : GPS / DGPS Others : .....

Type of Echo Sounder : .....

Name and Signature : .....

Ship's/Company's Stamp : .....



CORRECTION NO.	SNM EDN NO.	LAST CORR N NO.	CHART NO.	Location on Chart		
64	10/2020	55/2020	GSP1/SP1			X

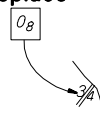
Caution : some computer printers might distort the tracings.  
Users are advised to check and, if necessary, adjust settings on the printer



103° 40'E

Caution : some computer printers might distort the tracings.  
Users are advised to check and, if necessary, adjust settings on the printer

Replace

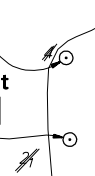


Insert

15

Insert

06

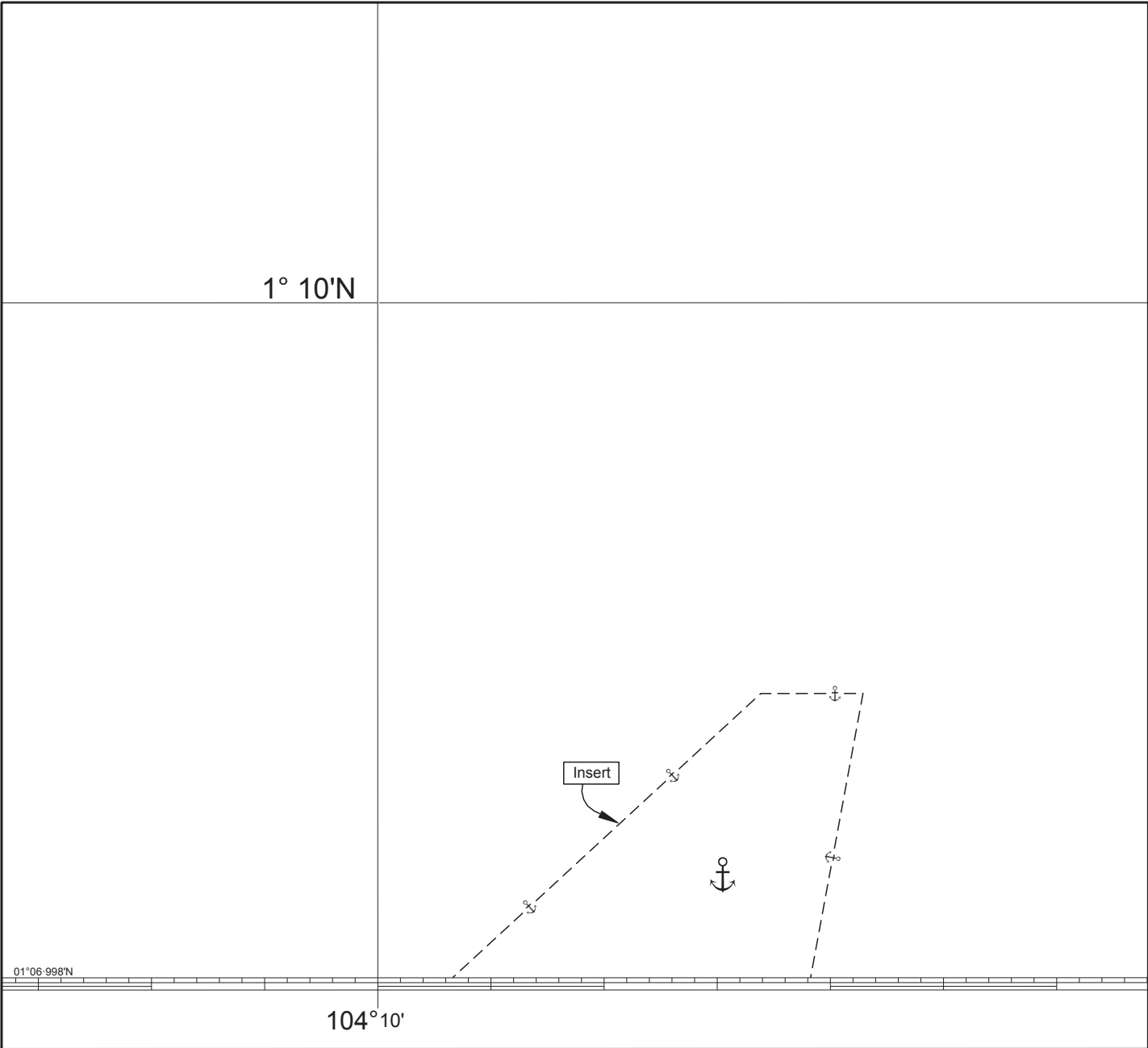


103°25'E

1°15'N

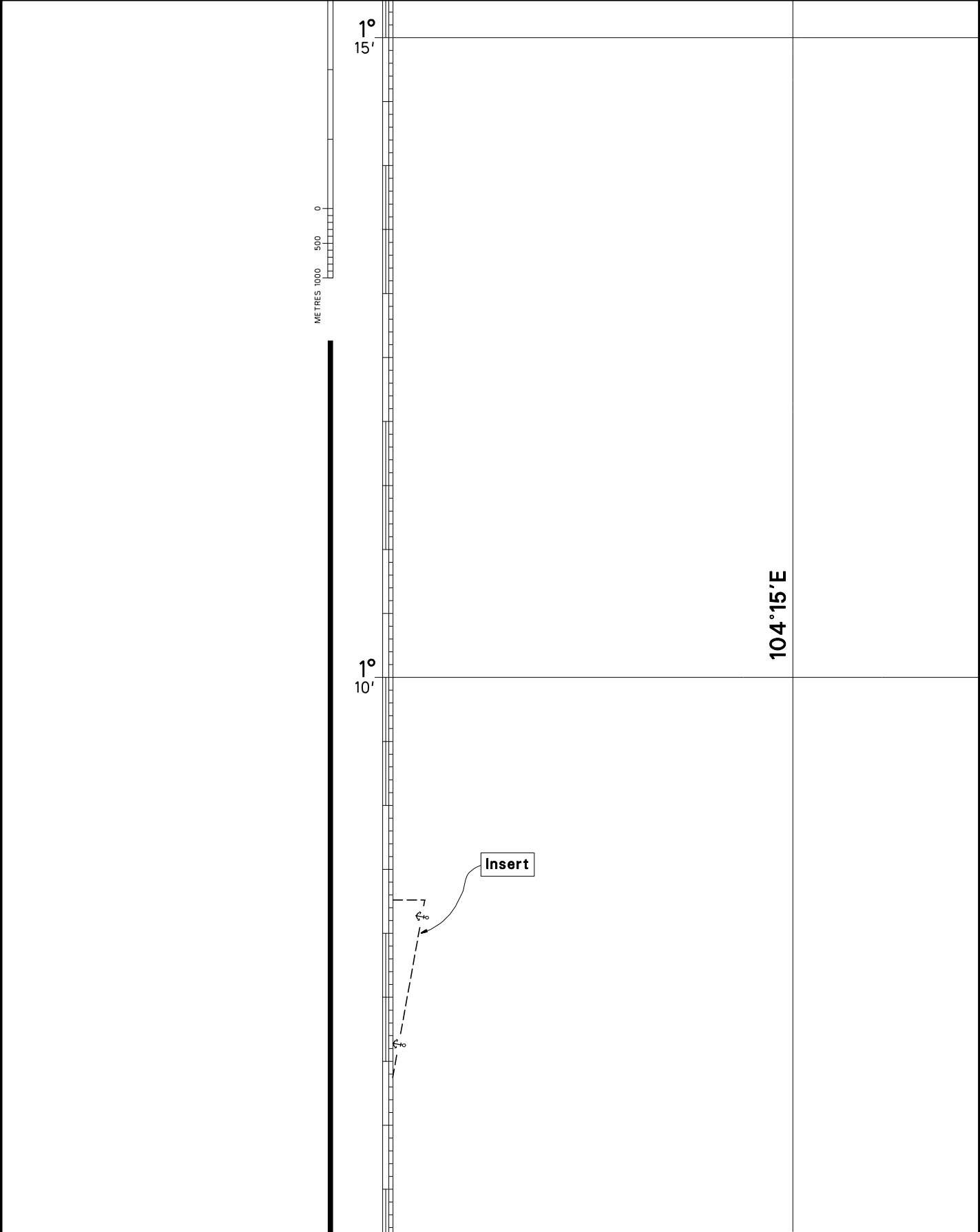
CORRECTION NO.	SNM EDN NO.	LAST CORR N NO.	CHART NO.	Location on Chart		
66	10/2020	46/2020	500		X	

Caution: some computer printers might distort the tracings.  
Users are advised to check and, if necessary, adjust settings on the printer



CORRECTION NO.	SNM EDN NO.	LAST CORR N NO.	CHART NO.	Location on Chart		
67	10/2020	57/2020	502			X

Caution : some computer printers might distort the tracings.  
Users are advised to check and, if necessary, adjust settings on the printer



CORRECTION NO.	SNM EDN NO.	LAST CORR N O.	CHART NO.	Location on Chart		
67	10/2020	58/2020	503	X		

Caution: some computer printers might distort the tracings.  
Users are advised to check and, if necessary, adjust settings on the printer