



---

## SINGAPOREAN NOTICES TO MARINERS

---

	<b>CONTENT</b>	<b>Page</b>
I	Index of Charts & Publications	109
II	New Publications	110
	Notices to Mariners and Chart Corrections	111
	Temporary and Preliminary Notices	112
III	Navigational Information	113
	Amendments to Publications	115
IV	Reprint of Radio Navigational Warnings	116
V	Reprint of Admiralty Notices to Mariners for Dual Badged Charts	117

---

**The monthly Notices to Mariners contain corrective information affecting charts published by the Hydrographic Department, Maritime and Port Authority of Singapore. The information contained in these Notices should be inserted on the charts affected. Notices under Section II apply only to the particular Singaporean Chart(s) indicated.**

---

These notices can be accessed from the MPA webpage:

<http://www.mpa.gov.sg/infocentre/publications/noticesmari.htm>. Copies of these notices can also be obtained free from the Hydrographic Department, Maritime and Port Authority of Singapore or from Motion Smith telephone number (65) 62205098.

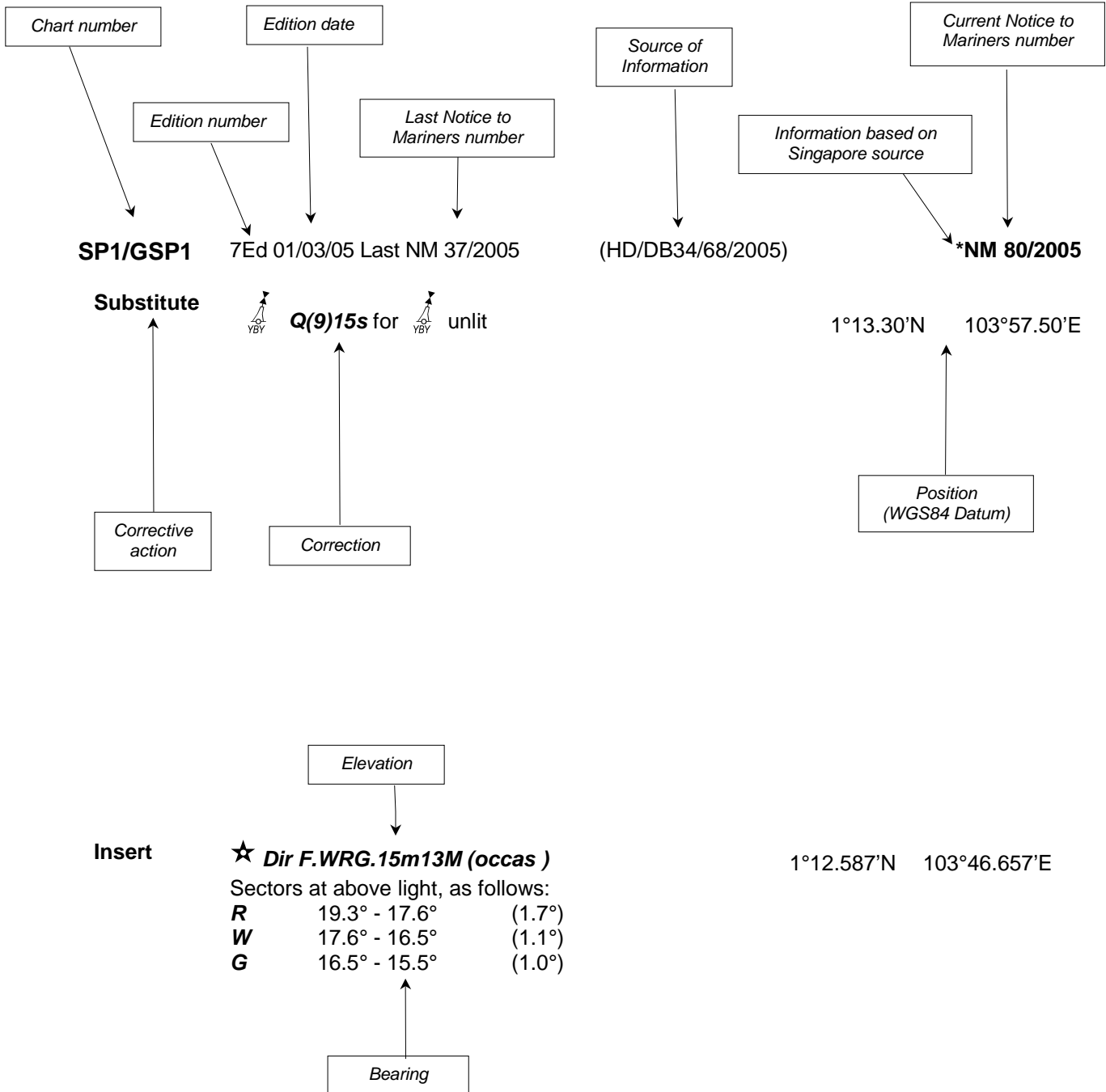
Mariners are requested to notify the Chief Hydrographer, Maritime and Port Authority of Singapore, immediately on the discovery of new dangers or suspected dangers to navigation and of changes or defects in aids to navigation.

Hydrographic Department  
Maritime and Port Authority of Singapore  
P.O. Box 313  
PSA Building Post Office  
Singapore 911141

Tel : (65) 63751550  
Fax : (65) 62787646

## EXPLANATION OF FORMAT

The elements of a typical chart correction are explained below.



**Notes:**

- a) Notice to Mariners number followed by:
  - T** indicates a Temporary Notice (eg. \*NM 80T/2005).
  - P** indicates a Preliminary Notice (eg. \*NM 80P/2005).
- b) Bearings are referred to True Compass in degrees clockwise from 000° to 359°. Bearings related to lights are from seaward.
- c) Heights and elevations are above Mean High Water Spring.

## I

## INDEX OF CHARTS AND PUBLICATIONS

NOTICES	DESCRIPTION	PAGE	NOTICES	DESCRIPTION	PAGE
*84	SP1/GSP1	111			
*85	202	111			
	500	111			
	501	111			
*86	Construction of bridge across Selat Chermin	113			
*87	Dredging and construction works at Pulau Sebarok	114			
*88	Updating of publication "SINGAPORE PORT INFORMATION EDITION 2004"	115			

**II**  
**NEW PUBLICATIONS**

Nil

**II**  
**NOTICES TO MARINERS AND CHART CORRECTIONS**

**SP1/GSP1**      7Ed 01/03/05 Last NM 79/2005      (HD/DB67/8/2005)      **\*NM 84/2005**

**Delete**

Jurong Control  (69)

1°18.43'N

103°43.24'E

---

**202**      4Ed 15/11/04 Last NM 78/2005      (HD/DB67/9/2005)      **\*NM 85/2005**

**Insert**

 **Wk(SD)**

1°11.53'N

103°32.48'E

(Previous NM 8/66T/2005 is cancelled)

---

**500**      4Ed 15/08/05 Last NM 75/2005      (HD/DB67/9/2005)      **\*NM 85/2005**

**Insert**

 **Wk(SD)**

1°11.53'N

103°32.48'E

(Previous NM 8/66T/2005 is cancelled)

---

**501**      3Ed 15/09/03 Last NM 64/2005      (HD/DB67/9/2005)      **\*NM 85/2005**

**Insert**

 **Wk(SD)**

1°11.53'N

103°32.48'E

(Previous NM 8/66T/2005 is cancelled)

---

**II**  
**TEMPORARY AND PRELIMINARY NOTICES**

Nil

### III NAVIGATIONAL INFORMATION

#### \*(NM 86/2005) CONSTRUCTION OF BRIDGE ACROSS SELAT CHERMIN (KEPPEL BAY DRIVE TO PULAU KEPPEL)

Date : With effect from 25 August 2005 to 25 February 2006.

Location : At Selat Chermin, from Keppel Bay Drive to Pulau Keppel within a working area bounded by the following coordinates (See attached chartlet).

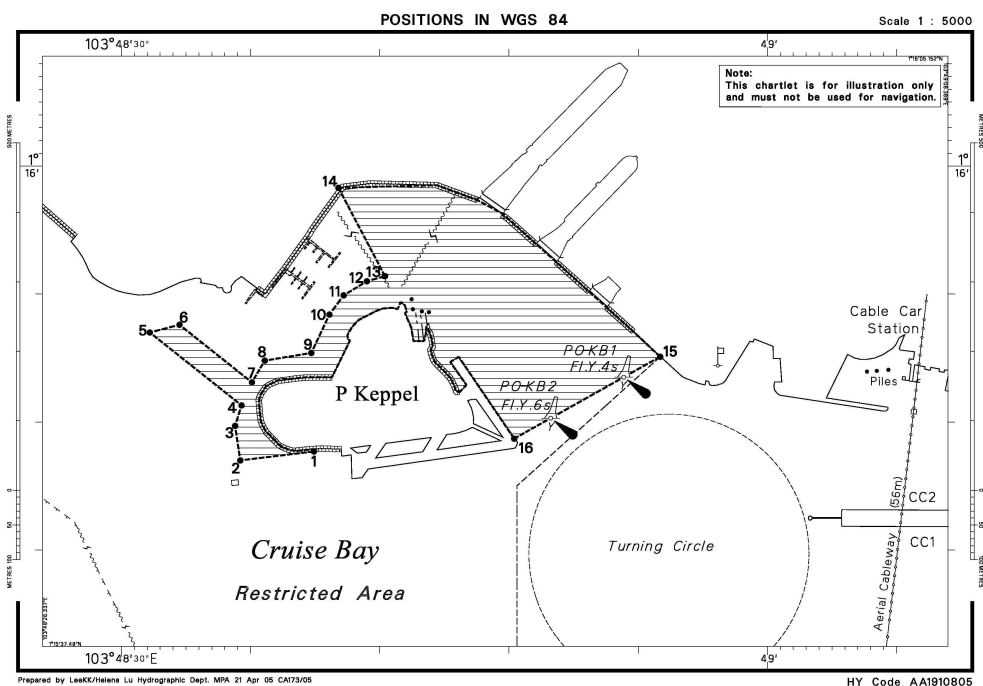
Point	Latitude (N)	Longitude (E)	Point	Latitude (N)	Longitude (E)
1	01°15.777'	103°48.649'	9	01°15.854'	103°48.647'
2	01°15.770'	103°48.592'	10	01°15.884'	103°48.661'
3	01°15.797'	103°48.588'	11	01°15.899'	103°48.672'
4	01°15.813'	103°48.593'	12	01°15.910'	103°48.690'
5	01°15.870'	103°48.522'	13	01°15.914'	103°48.704'
6	01°15.876'	103°48.545'	14	01°15.983'	103°48.668'
7	01°15.831'	103°48.601'	15	01°15.851'	103°48.917'
8	01°15.848'	103°48.611'	16	01°15.787'	103°48.804'

Name of Marker Buoys	Latitude (N)	Longitude (E)	Buoy and Light Characteristic
PO - KB1	01°15.835'	103°48.889'	Yellow pillar, Fl.Y.4s
PO - KB2	01°15.803'	103°48.832'	Yellow pillar, Fl.Y.6s

Working hours : 24 hours daily including Sundays and Public Holidays.

Source : Port Marine Notice No. 100 of 2005, dated 17 Aug 05.

Charts affected : SP1, GSP1, 4035, 4040 & 4041.



### III NAVIGATIONAL INFORMATION

#### \*(NM 87/2005) DREDGING AND CONSTRUCTION WORKS AT PULAU SEBAROK

Date : With effect from 1 September 2005 to 1 March 2006.

Location : Southwest of Pulau Sebarok, within the working area bounded by the following coordinates (See attached chartlet).

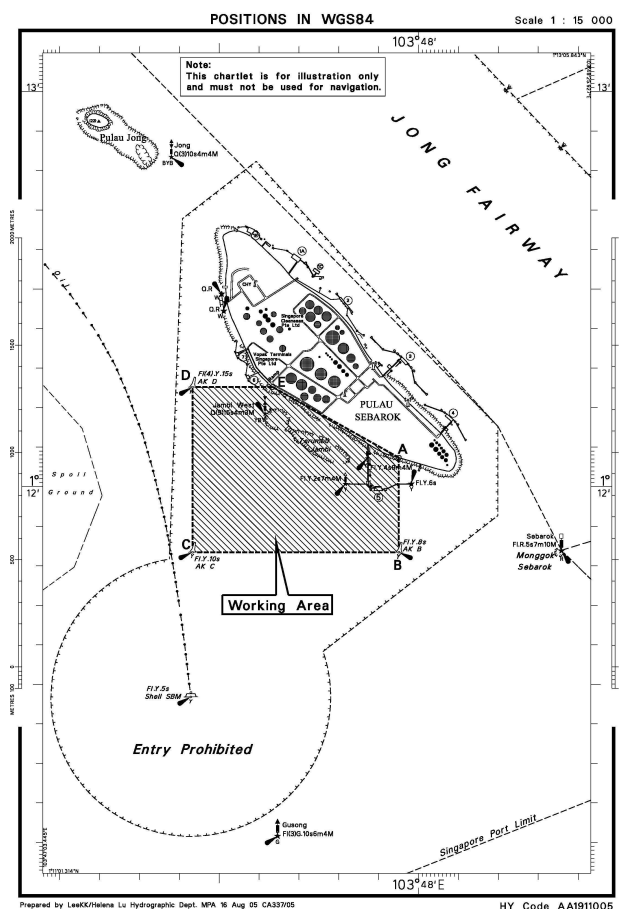
Point	Latitude (N)	Longitude (E)
A	01°12.073'	103°47.950'
B	01°11.834'	103°47.950'
C	01°11.834'	103°47.433'
D	01°12.252'	103°47.433'
E	01°12.252'	103°47.634'

Name of Marker Buoys	Latitude (N)	Longitude (E)	Buoy and Light Characteristic
AK B	01°11.834'	103°47.950'	Yellow pillar, Fl.Y.8s
AK C	01°11.834'	103°47.433'	Yellow pillar, Fl.Y.10s
AK D	01°12.252'	103°47.433'	Yellow pillar, Fl(4)Y.15s

Working hours : 24 hours daily including Sundays and Public Holidays.

Source : Port Marine Notice No. 105 of 2005 dated 24 Aug 2005.

Charts affected : SP1, GSP1, 4035, 4036, 4040 & 4041.



**III**  
**AMENDMENTS TO PUBLICATIONS**

**\*(NM 88/2005) UPDATING OF PUBLICATION "SINGAPORE PORT INFORMATION EDITION 2004"**

1 Page 93

Item no. 22 Pasir Panjang Holding Anchorage.

Amend geographical positions to read as shown below:

- |                             |                             |
|-----------------------------|-----------------------------|
| 1. 01°16.449'N 103°46.803'E | 3. 01°15.765'N 103°46.790'E |
| 2. 01°16.230'N 103°47.113'E | 4. 01°15.938'N 103°46.501'E |

2 Page 96

Item no. 6 Pasir Panjang Fairway.

Amend geographical positions to read as shown below:

- |                             |                             |
|-----------------------------|-----------------------------|
| 1. 01°16.053'N 103°46.309'E | 5. 01°16.169'N 103°47.071'E |
| 2. 01°16.689'N 103°46.686'E | 6. 01°16.230'N 103°47.113'E |
| 3. 01°16.177'N 103°47.416'E | 7. 01°16.449'N 103°46.803'E |
| 4. 01°15.977'N 103°47.446'E | 8. 01°15.938'N 103°46.501'E |

Source: Port Marine Circular No. 19 of 2005 dated 26 Jul 05.

3 Page 133

Item no. 27 - PULAU BUKOM (SHELL REFINERY) (1°14.0'N, 103°46.1'E)

Amend the following:

Berth	Length of Berth		Depth Alongside (Year Surveyed)		Source
	Delete	Insert	Delete	Insert	
8	240m	<i>275m</i>	13.8m (2001)	<i>16.2m (2005)</i>	HY Code C00112505
9	170m	<i>158m</i>			HD/DB67/10-2005
11			5.5m (2001)	<i>5.5m (2005)</i>	F00104505
12			13.0m (2001)	<i>13.2m (2005)</i>	HY Code C00112205

---

**IV**  
**REPRINT OF RADIO NAVIGATIONAL WARNINGS**

Nil

**V**  
**REPRINT OF ADMIRALTY NOTICES TO MARINERS**  
**FOR DUAL BADGED CHARTS**

**NEW EDITIONS OF ADMIRALTY CHARTS AND PUBLICATIONS**

**Admiralty Charts published 8 September 2005**

<i>Chart</i>	<i>Title and other remarks</i>	<i>Scale</i>	<i>Folio</i>	<i>Catalogue page</i>
4035	Port of Singapore, Western Anchorage, Jong Fairway and Cruise Bay.  <i>This chart is published jointly by the UK Hydrographic Office and the Maritime and Port Authority of Singapore. Includes changes to depths throughout and new berths on Pasir Panjang. The limits of Pasir Panjang Fairway and Holding Anchorage have also been changed.</i>	1:10,000	45	80
4036	Port of Singapore, Raffles Lighthouse to The Sisters.  <i>This chart is published jointly by the UK Hydrographic Office and the Maritime and Port Authority of Singapore. Includes changes to depths throughout</i>	1:10,000	45	80

**ADMIRALTY CHARTS AND PUBLICATIONS PERMANENTLY WITHDRAWN**

<i>Charts to be WITHDRAWN</i>	<i>Main Title</i>	<i>On publication of New Edition</i>
4035	Port of Singapore, Western Anchorage, Jong Fairway and Cruise Bay.	4035
4036	Port of Singapore, Raffles Lighthouse to The Sisters.	4036

V  
**REPRINT OF ADMIRALTY NOTICES TO MARINERS  
 FOR DUAL BADGED CHARTS**

**4094/05 \* SINGAPORE STRAIT — Indonesia — Pulau Batam — North West Coast — Pulau Dangas, Northwards and North-westwards — Legends.**

Source: Boskalis International Pte.Ltd

**Chart 4041** [previous update 3710/05 ] WGS84 DATUM

Insert legend, *Less water reported (2002)*, centred on: 1° 09' .40N. , 103° 55' .20E.  
 1° 09' .55N. , 103° 56' .90E.

**4271/05 \* SINGAPORE — Jurong Island — Sinki Fairway Southwards — Legend.**

Source: Maritime and Port Authority of Singapore DBNM 24/05

**Chart 4030** [previous update 1228/05 ] WGS84 DATUM

Amend legend to, *Sudong Bunkering A*, centred on: 1° 11' .920N. , 103° 40' .600E.

**4272/05 \* SINGAPORE — Jurong Island South and North East Coasts and Pasir Panjang Holding Anchorage and Fairway — Anchorage area. Jetty. Fairway. Depths. Coastline. Berths. Legend. Dredged depths. Dredged areas.**

Source: Maritime and Port Authority of Singapore DBNM 22-23 & 25-27/05

**Chart 4031** [previous update 3937/05 ] WGS84 DATUM

Amend dredged depth to, *14.5m (2005)*, centred on: 1° 15' .115N. , 103° 42' .101E.  
 dredged depth to, *13.2m (2005)*, centred on: 1° 15' .160N. , 103° 42' .225E.  
 legend to, SembCorp Utilities Pte Ltd, centred on: 1° 15' .250N. , 103° 42' .200E.

**Chart 4032** [previous update 3937/05 ] WGS84 DATUM

Amend dredged depth to, *14.5m (2005)*, centred on: 1° 15' .115N. , 103° 42' .101E.  
 dredged depth to, *13.2m (2005)*, centred on: 1° 15' .160N. , 103° 42' .225E.  
 legend to, SembCorp Utilities Pte Ltd, centred on: 1° 15' .250N. , 103° 42' .200E.

**Chart 4034** [previous update 2370/05 ] WGS84 DATUM

Insert the accompanying block A, showing amendments to jetty, dredged areas and depths centred on: 1° 17' .10N. , 103° 43' .81E.  
 the accompanying block B, showing amendments to anchorage area, fairway limits, berths, dredged areas and depths centred on: 1° 16' .17N. , 103° 46' .65E.

**Chart 4040** [previous update 3937/05 ] WGS84 DATUM

Insert the accompanying block showing amendments to anchorage area, fairway limits and jetty centred on: 1° 16' .4N. , 103° 45' .3E.

**V**  
**REPRINT OF ADMIRALTY NOTICES TO MARINERS**  
**FOR DUAL BADGED CHARTS**

**4275/05 \* SINGAPORE STRAIT — Indonesia — Pulau Batam North-eastwards — Depths.**

Source: Boskalis International Pte Ltd

**Chart 4042** [previous update 714/05 ] WGS84 DATUM

Insert	depth 29 <sub>2</sub> enclosed by 30m contour	(a) 1° 13' .38N. , 104° 07' .48E.
Delete	depth 35, close S of:	(a) above


**4277/05 SINGAPORE STRAIT — Malaysia and Indonesia — Nipa Transit area — Wreck. Depths. Legend.**

Source: DG Seacomm, Indonesian Charts 347 & 348, & Indonesian Notice 26/251/05

**Chart 4038** [previous update 3709/05 ] WGS84 DATUM

Insert		1° 11' .67N. , 103° 32' .76E.
--------	---	-------------------------------

**Chart 4039** [previous update 2548/05 ] WGS84 DATUM

Insert		1° 11' .67N. , 103° 32' .76E.
	depth 14 <sub>1</sub> enclosed by 15m contour	1° 10' .11N. , 103° 38' .77E.
	depth 17 <sub>3</sub> enclosed by 20m contour	(a) 1° 08' .18N. , 103° 38' .54E.
	depth 17 <sub>7</sub> enclosed by 20m contour	1° 08' .12N. , 103° 40' .00E.
	depth 17 enclosed by 20m contour	1° 07' .73N. , 103° 39' .82E.
	depth 6 <sub>9</sub> and extend 10m contour NE to enclose	(b) 1° 07' .68N. , 103° 41' .32E.
	depth 19 <sub>3</sub> enclosed by 20m contour	1° 05' .28N. , 103° 40' .97E.
	depth 26 <sub>5</sub> and extend 30m contour E to enclose	1° 05' .28N. , 103° 42' .29E.
	legend, <i>Less water reported (2004)</i> , centred on:	1° 02' .90N. , 103° 42' .80E.
		1° 02' .05N. , 103° 43' .30E.
Delete	depth 19 <sub>6</sub> enclosed by 20m contour, close NE of:	(a) above
	depth 8 <sub>2</sub> , close SW of:	(b) above

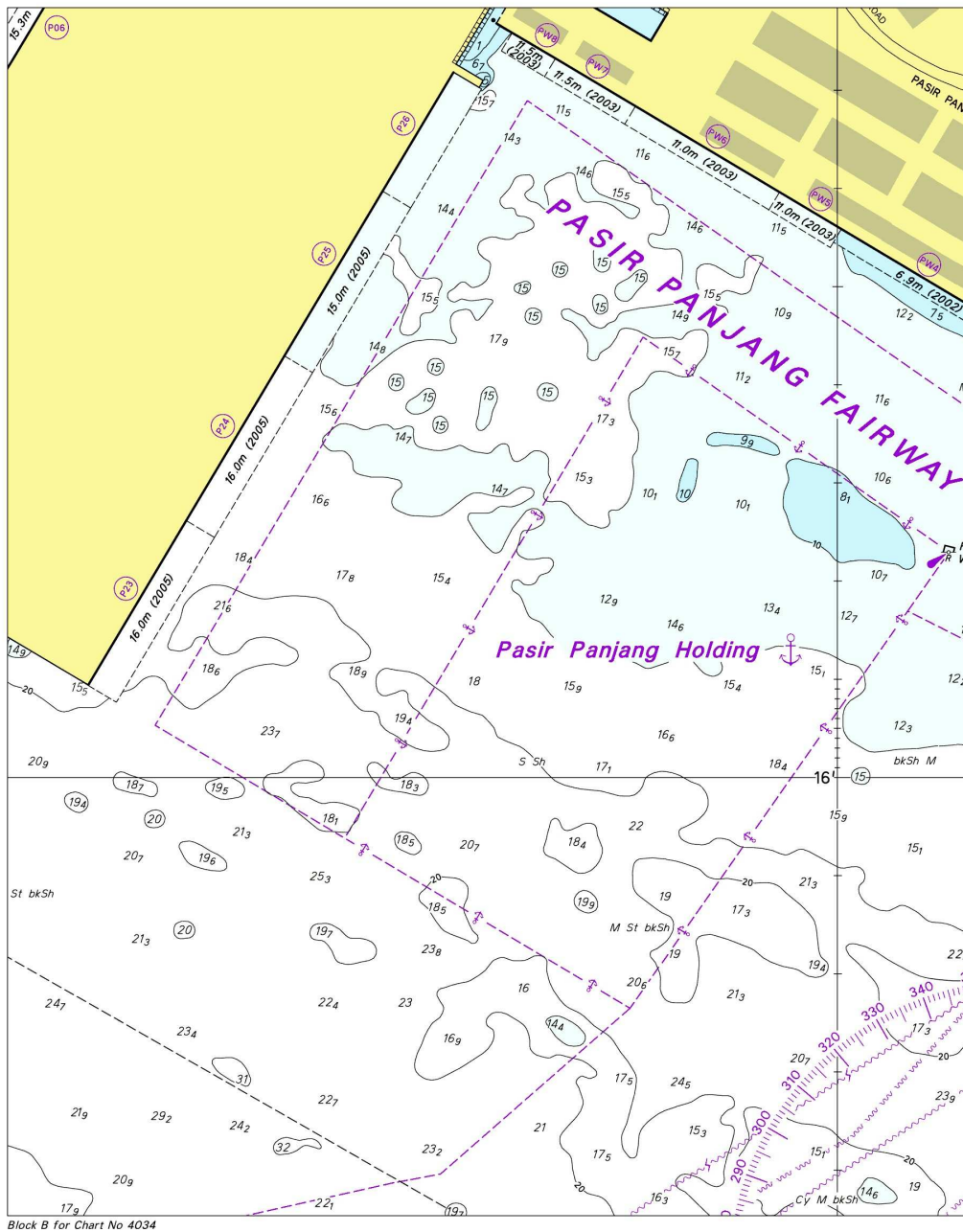
**Chart 4040** [previous update 4272/05 ] WGS84 DATUM

Insert	depth 14 <sub>1</sub> enclosed by 15m contour	1° 10' .11N. , 103° 38' .77E.
	depth 17 <sub>3</sub> enclosed by 20m contour	(a) 1° 08' .18N. , 103° 38' .54E.
	depth 17 <sub>7</sub> enclosed by 20m contour	1° 08' .12N. , 103° 40' .00E.
	depth 17 enclosed by 20m contour	1° 07' .73N. , 103° 39' .82E.
	depth 6 <sub>9</sub> and extend 10m contour NE to enclose	(b) 1° 07' .68N. , 103° 41' .32E.
Delete	depth 19 <sub>6</sub> enclosed by 20m contour, close NE of:	(a) above
	depth 8 <sub>2</sub> , close SW of:	(b) above



**V**  
**REPRINT OF ADMIRALTY NOTICES TO MARINERS**  
**FOR DUAL BADGED CHARTS**

**NOTE:** This block correction is for illustration only. The actual block correction can be obtained from the Admiralty Notices to Mariners Weekly Edition 37 of 2005 or from web site : [http://www.ukho.gov.uk/wnm/2005/week37\\_4267-4367/chart4034nm4272.pdf](http://www.ukho.gov.uk/wnm/2005/week37_4267-4367/chart4034nm4272.pdf)



Updated to Admiralty Notices to Mariners Edition No. 37 of 2005 dated 15 September.

**MPA ENC DISTRIBUTORS**

Please approach any of the appointed distributors to purchase the Singapore ENC.

<b>PERSON TO CONTACT</b>	<b>ADDRESS</b>	<b>TEL/FAX NO.</b>
Mr Chong Chee Meng General Manager	DPM (Singapore) Pte Ltd 1 Maritime Square, #09-72 Harbour Front Centre, Singapore 099253 Email: <a href="mailto:sales@dpmsingapore.com.sg">sales@dpmsingapore.com.sg</a> Website: <a href="http://www.dpmsingapore.com.sg">http://www.dpmsingapore.com.sg</a>	Tel. No.: +65 6270 4060 Fax No.: +65 6276 3858
Mr Hamzah bin Akhbar CAMS Manager	Kelvin Hughes(S) Pte Ltd 8 Pandan Avenue #02-00, Singapore 609384 Email: <a href="mailto:hamzah.akhbar@khsing.com">hamzah.akhbar@khsing.com</a> Website: <a href="http://www.kelvinhughes.co.uk">http://www.kelvinhughes.co.uk</a>	Tel. No.: +65 6545 9880 ext.24 Fax No.: +65 6545 8892
Mr Philip Loh Sales Manager	Motion Smith 76 Shenton Way #01-01, Singapore 079119 Email: <a href="mailto:sales@motsmith.com">sales@motsmith.com</a> Website: <a href="http://www.motsmith.com">http://www.motsmith.com</a>	Tel. No.: +65 6220 5098 Fax No.: +65 6225 4902
Mr Looi Keen Wai Regional Sales Manager	Transas Marine Pacific Pte Ltd 750C Chai Chee Road, Technopark@Chai Chee #04-07, Singapore 469003 Emails: <a href="mailto:looi@transas.com.sg">looi@transas.com.sg</a> Website: <a href="http://www.transas.com.sg">www.transas.com.sg</a>	Tel. No.: +65 6443 3061 Fax No.: +65 6443 3025
Mr Choy Kum Weng Manager	Vector Services Pte Ltd 2 Maritime Square #04-12B SP1 Building, Singapore 099255 Email: <a href="mailto:kwchoy@pacific.net.sg">kwchoy@pacific.net.sg</a>	Tel. No.: +65 6278 7212 Fax No.: +65 6278 7212
Mr George Arts President	Marine Press of Canada Nautical Charts, Books & Services Software & ENC's 640 Rue St-Paul Ouest, Suite 300 Montreal (QC) Canada, H3C1L9 Emails : <a href="mailto:sales@marinepress.com">sales@marinepress.com</a> Website: <a href="http://www.marinepress.com">www.marinepress.com</a>	Tel. No.: (514) 866-8342 Fax No.: (514) 866-9050
Mr Thomas Wilde Superintendent	HanseNautic GmbH Bade & Hornig, Eckardt & Messtorff Herrngraben 31 D-20459 Hamburg, Germany Email: <a href="mailto:info@HanseNautic.com">info@HanseNautic.com</a> Website : <a href="http://www.HanseNautic.com">http://www.HanseNautic.com</a>	Tel. No.: +49 40 374 811-32 Fax No.: +49 40 366 400
Mr Daniel Schwarzwaelder Sales Manager	SevenCs AG + Co. KG Ruhrstrasse 90, D-22761 Hamburg, Germany Email: <a href="mailto:sales@chartworld.com">sales@chartworld.com</a> Website : <a href="http://www.sevencs.com">www.sevencs.com</a>	Tel. No.: +49 40 853 58 6940 Fax No.: +49 40 853 58 6949
Mr Tadahiko KATSURA	Japan Hydrographic Association ENC Service Division 5-3-3 Tsukiji, Chuo-ku Tokyo 104-0045, Japan Emails: <a href="mailto:enc-support@jha.jp">enc-support@jha.jp</a> Website: <a href="http://www.jha.jp">www.jha.jp</a>	Tel. No.: +81 3 3543 0752 Fax No.: +81 3 3543 0695
Mr Sea-Young Rhee Foreign Marketing Manager	E_MLX Co. Ltd Ssangyong Research No.2 Lab Sinseong-Dong 100 Yusong-Gu, Daejoen 305-804, Korea (ROK) Email: <a href="mailto:syrhee@emlx.co.kr">syrhee@emlx.co.kr</a>	Tel. No.: +82 42 865 1883 Fax No.: +82 42 865 1884
Mr C G Kim	Korean Ocean Development Co. Ltd 2ND Fl, Dongbang Bldg, 25-4, 4 Ga Jungang-Dong, Jung-Gu, Busan, South Korea Email: <a href="mailto:sales@chartkorea.com">sales@chartkorea.com</a> Website: <a href="http://chartkorea.com">http://chartkorea.com</a>	Tel. No.: +82 514 66 0760 Fax No.: +82 514 65 9345

Mr Kjell Nodland	C-Map Norway A/S P.O Box 212 , N-4371 Egersund, Norway Email: <a href="mailto:market@c-map.no">market@c-map.no</a> Website : <a href="http://www.c-map.no">http://www.c-map.no</a>	Tel No.: +47 514 64 700 Fax No: +47 514 64 701
Mr Roar Moe International Marketing Coordinator	Maritime Information System AS (MARIS) Danholmen 25, No.3115 Tonsberg, Norway Emails: <a href="mailto:roar.moe@maris.no">roar.moe@maris.no</a> Website: <a href="http://www.maris.no">http://www.maris.no</a>	Tel. No.: +47 33 30 42 50 Fax No.: +47 33 30 42 51
Ms Marianne Barstad	PRIMAR STAVANGER Lervigsveien 36, P.O Box 60, N-4001 Stavanger, Norway Email: <a href="mailto:sales@primar.org">sales@primar.org</a> Website: <a href="http://www.primar-stavanger.org">http://www.primar-stavanger.org</a>	Tel. No.: +47 51 93 9500 Fax No.: +47 51 93 9501

---

**AGENT FOR MARITIME AND PORT AUTHORITY OF SINGAPORE (MPA) PUBLICATIONS**

**Agent's name** : Motion Smith  
**Address** : 76 Shenton Way # 01-01  
Singapore 079119  
**Telephone** : (65) 6220 5098  
: (After Office hours: Pager No. 930 44156, 930 44159)  
**Fax No.** : (65) 6225 4902  
**Email** : [sales@motsmith.com](mailto:sales@motsmith.com)  
**Internet Web Site** : <http://www.motsmith.com>

---

## HYDROGRAPHIC NOTE - Instructions

1. Mariners are requested to notify the Chief Hydrographer, Maritime and Port Authority of Singapore, when new or suspected dangers to navigation are discovered, changes are observed in aids to navigation or where corrections to nautical publications may be necessary. Reports which cannot be confirmed or are lacking in certain details should not be withheld.
2. Any ambiguities of time, positioning and depth should be stressed and any firm expectation of being able to check the information provided on a following voyage should be mentioned.
3. Mariners using satellite position fixing systems, eg. GPS, should provide details of equipment and datum used (where applicable). Where bearings (true or magnetic) are taken visually or by radar to fix a position, it should include more than two objects in order to provide a check on its accuracy. A position may also be defined by bearing and distance from a conspicuous object eg. beacon, lighthouse etc.
4. The note should include a tracing or a digital image of the chart used and the details should be clearly marked.
5. Echo sounders frequently register greater depths than the advertised maximum depth for the equipment, eg. a trace appearing at 50 metres may be in fact be 550 metres or even 1050 metres for equipment whose maximum depth is 500 metres. Erroneous depths caused by 2nd transmission error can usually be recognised by the following:
  - (a) the tracing being weaker than normal for the depth registered,
  - (b) the trace appearing to pass through the transmission line,
  - (c) the feathery nature of the trace.
6. An acknowledgement of receipt will be sent. When a Notice to Mariners is issued, the sender's vessel or name is quoted as the source unless the same information is also received in foreign Notices to Mariners.
7. Reports of shoals, uncharted dangers and defects in aids to navigation may also be made to the appropriate Singapore Port Operations Control Station on VHF Channels 10, 12, 14, 68 or 73.

**HYDROGRAPHIC NOTE**

To:

Chief Hydrographer  
Hydrographic Department  
Maritime and Port Authority of Singapore  
460 Alexandra Road #20-00 PSA Building  
Singapore 119963

Tel: (65) 63751550 or (65) 63751551  
Fax: (65) 62787646  
Email address: [hydrographic@mpa.gov.sg](mailto:hydrographic@mpa.gov.sg)

**Sender's Contact Details:**

Date: .....  
Name of Vessel: .....  
Address of Sender: .....  
Tel: . ..... Fax: .....  
Email Address: .....

**Nature of Observation:**

General Location: .....  
Subject: .....  
Position: Lat ..... Long .....  
Charts Used: .....  
Date & Time of Observation: .....  
Details: .....  
.....  
.....  
Attachment: .....

**Equipment Used:**

GPS / DGPS  
Type of Position Fixing: ..... Others: .....  
Type of Echo Sounder: .....  
Name and Signature: .....

Ship' s / Company's stamp: .....