



## SINGAPOREAN NOTICES TO MARINERS

SECTION	CONTENT	Page
I	Affected Charts & Publications	1
II	New Charts & Publications	2
	Notices to Mariners and Chart Corrections	8
	Temporary and Preliminary Notices	9
	Cancelled Temporary and Preliminary Notices	10
III	Navigational Information	11
	Amendments to Publications	12
IV	Reprint of Maritime Safety Information	13
V	Extract of Admiralty Notices to Mariners for Dual-Badged Charts	15

The monthly Notices to Mariners contain information required to keep charts and publications published by the Hydrographic Division, Maritime and Port Authority of Singapore up-to-date.

Mariners are requested to notify the Chief Hydrographer, Maritime and Port Authority of Singapore, immediately of the discovery of new or suspected dangers to navigation, observed changes to aids to navigation and ways Singaporean Charts and Publications can be improved. The Hydrographic Note on the back page should be used for this purpose.

Detailed information of charts and publications (coverage of charts, latest editions and distributors) are available on the Maritime and Port Authority Website: [www.mpa.gov.sg](http://www.mpa.gov.sg)

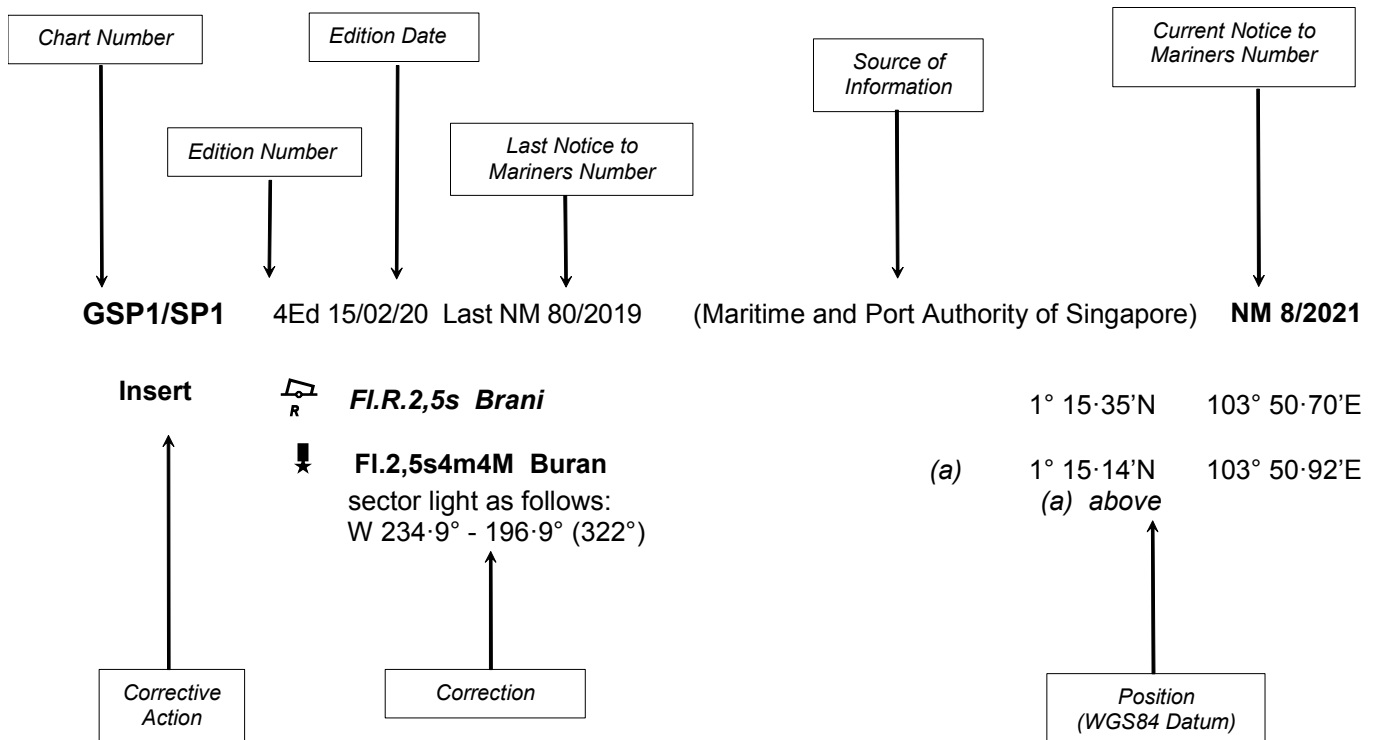
- [Singaporean Notice to Mariners](#)
- [Singaporean Charts](#)
- [Dual-Badged Charts](#)
- [Singapore ENC](#)
- [Malacca and Singapore Straits ENC](#)
- [Singapore Port Information](#)
- [Singapore Tide Tables](#)

### Contact information:

Hydrographic Division  
Maritime and Port Authority of Singapore  
7B Keppel Road  
#20-00 Tanjong Pagar Complex  
Singapore 089055  
Tel : 1800 272 7777 / (65) 6272 7777  
Fax : (65) 6226 1076  
Email : [hydrographic@mpa.gov.sg](mailto:hydrographic@mpa.gov.sg)

## EXPLANATION OF FORMAT

The elements of a typical chart correction are explained below.



### Notes:

- Notice to Mariners number followed by:
  - T** indicates a Temporary Notice (eg. **NM 9T/2021**).
  - P** indicates a Preliminary Notice (eg. **NM 10P/2021**).
- Bearings are true reckoned clockwise from 000° to 359°; those relating to lights are from seaward.
- Heights and elevations are above Mean High Water Springs.
- # indicates where amendments are made.
- \* indicates source from Maritime and Port Authority of Singapore.

I  
**AFFECTED CHARTS AND PUBLICATIONS**

**INDEX OF NOTICES**

<b>NOTICE NO.</b>	<b>DESCRIPTION</b>	<b>PAGE NO.</b>
-	New Charts and Publications	2 - 7
*92, *93	Singaporean Chart GSP1/SP1	8
94	Singaporean Chart 200	8
*92	Singaporean Chart 202	8
-	Temporary and Preliminary Notices	9 - 10
*95	Singapore Port Marine Notices/Circulars	11
*96	Amendments to Publications	12
-	Reprint of Maritime Safety Information	13 - 14
-	Extract of Admiralty Notices to Mariners for Dual-Badged Charts	15 -16

\*Source: Maritime and Port Authority of Singapore

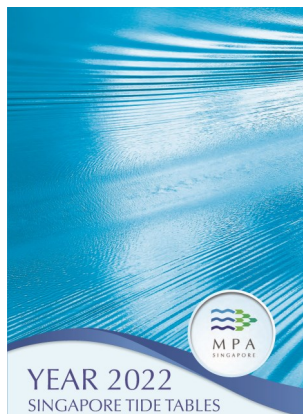
## II

## NEW CHARTS AND PUBLICATIONS

SINGAPORE TIDE TABLES YEAR 2022 HAS BEEN PUBLISHED ON 15<sup>TH</sup> SEPTEMBER 2021

## Summary of Publication

This publication contains Tidal Height and Tidal Stream Predictions covering stations in Singapore Port Waters and along the Straits of Malacca and Singapore.



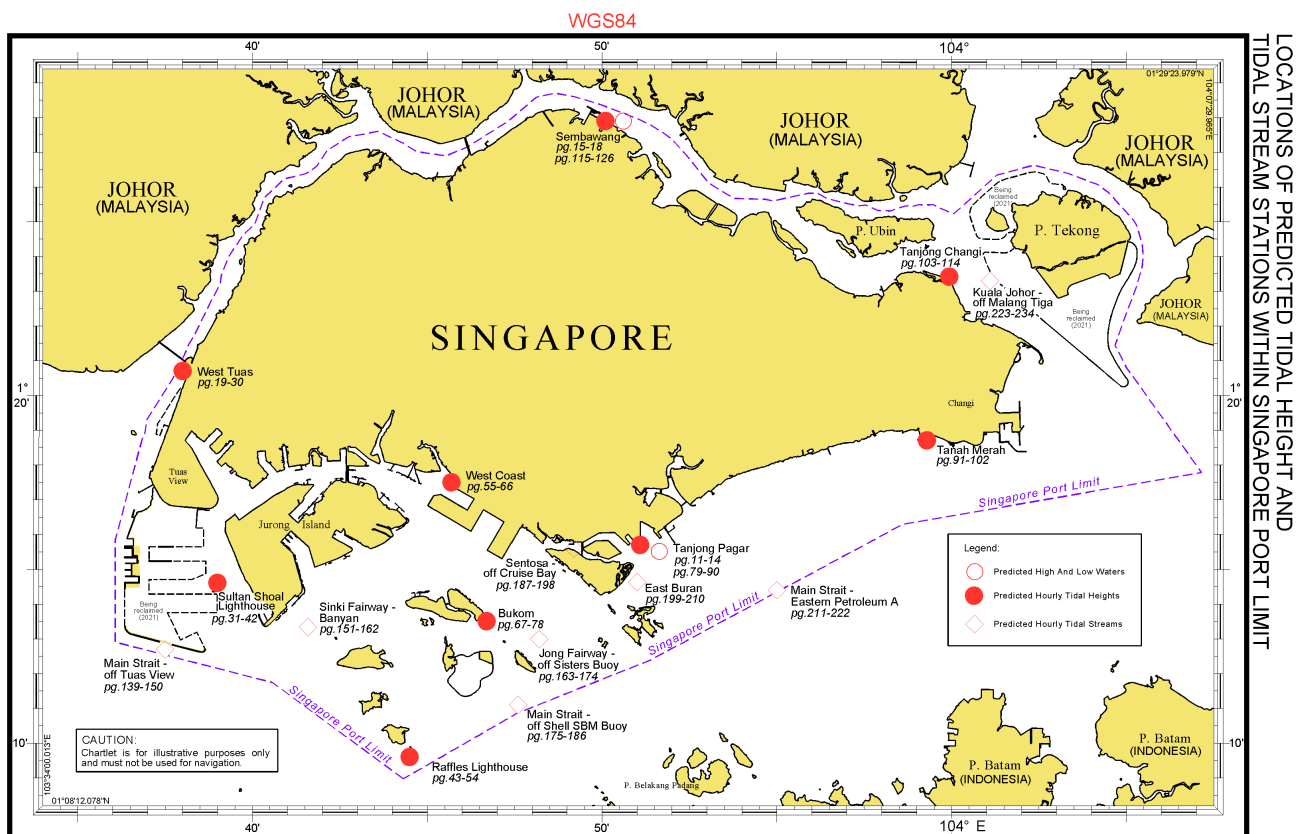
This publication consists of 5 segments.

1. **High and Low Water Predictions** at the following stations:
  - a) Tanjong Pagar
  - b) Sembawang
2. **Hourly Tidal Height Predictions** at the following stations:
  - a) West Tuas
  - b) Sultan Shoal Lighthouse
  - c) Raffles Lighthouse
  - d) West Coast
  - e) Bukom
  - f) Tanjong Pagar
  - g) Tanah Merah
  - h) Tanjong Changi
  - i) Sembawang
  - j) Singapore Strait - Horsburgh Lighthouse
3. **Hourly Tidal Stream Predictions** at the following stations:
  - a) Main Strait - off Tuas View
  - b) Sinki Fairway - Banyan
  - c) Jong Fairway - off Sisters Buoy
  - d) Main Strait - off Shell SBM Buoy
  - e) Sentosa - off Cruise Bay
  - f) East Buran
  - g) Main Strait - Eastern Petroleum A
  - h) Kuala Johor - off Malang Tiga
4. **Maximum and Slack Tidal Stream Predictions** at the following stations:
  - a) Malacca Strait - off Pulau Iyu Kecil Light
  - b) Singapore Strait - Selat Phillip
  - c) Singapore Strait - Karang Banteng (Buffalo Rock)
  - d) Singapore Strait - Horsburgh Lighthouse
5. **Malacca Strait - High and Low Water Predictions** at the following stations:
  - a) Kedah Pier, Pulau Pinang
  - b) Port Dickson
  - c) Kuala Batu Pahat

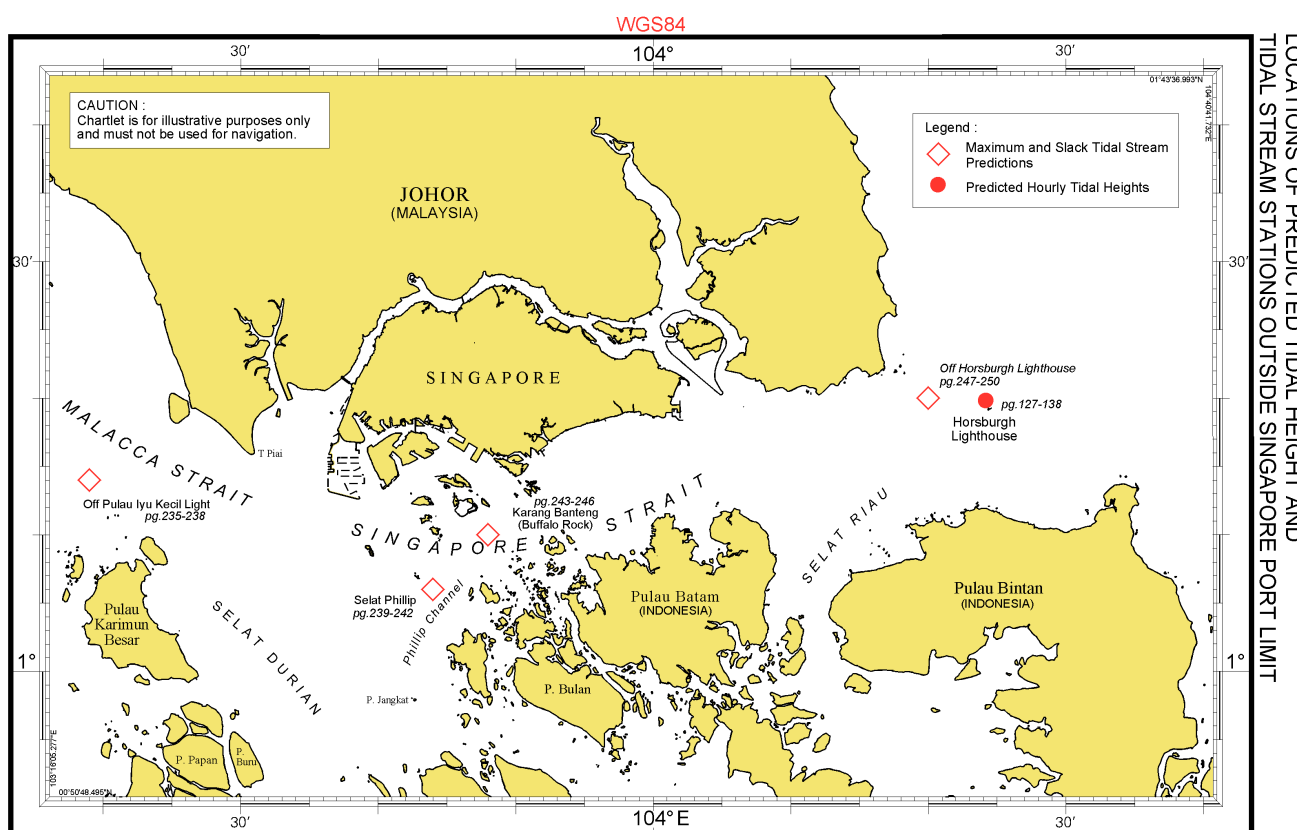
The locations of the above stations are shown in the chartlets below:

## II NEW CHARTS AND PUBLICATIONS

### Tidal Prediction Stations within Singapore Port Waters



### Tidal Prediction Stations within Straits of Malacca and Singapore



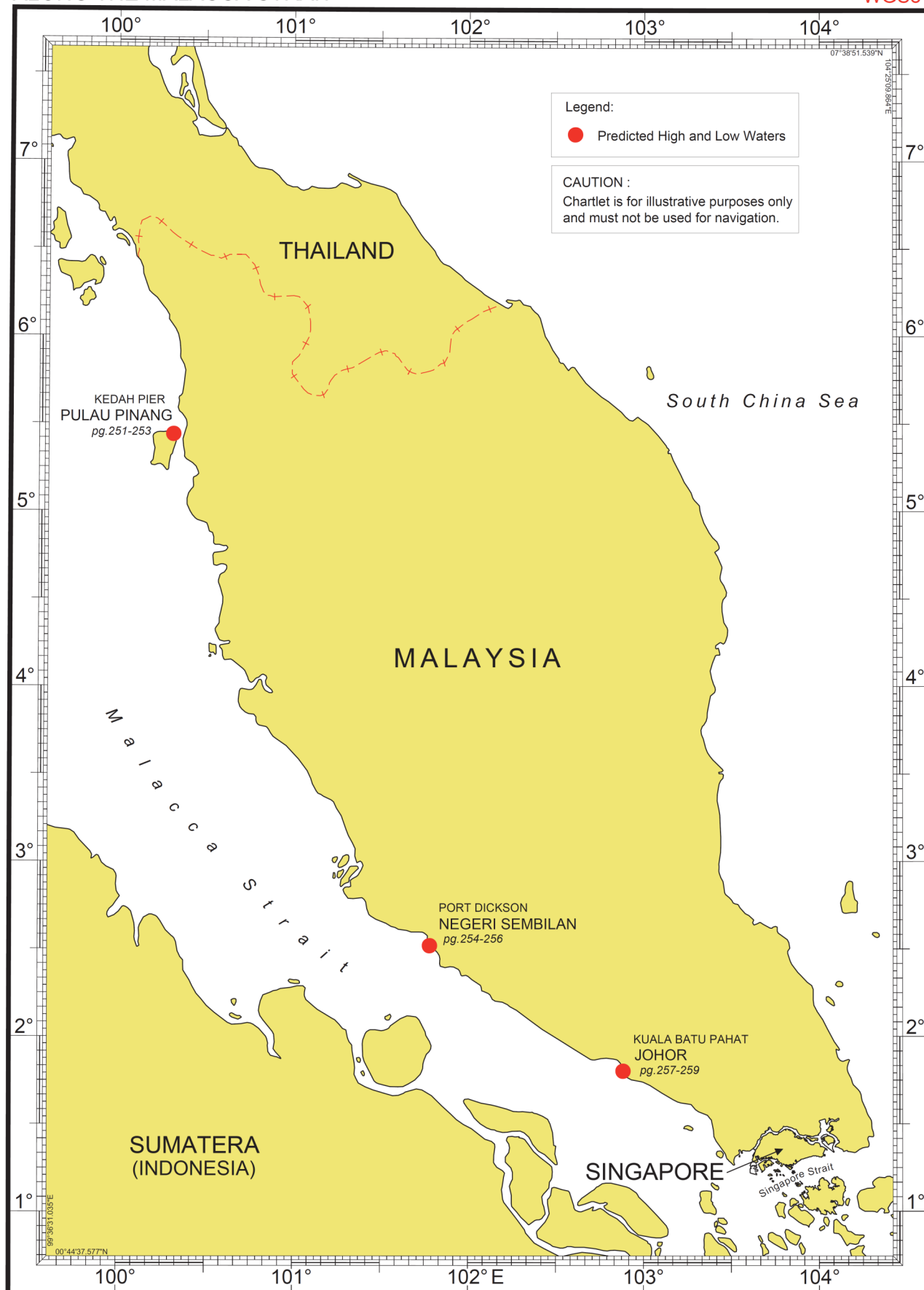
## II

### NEW CHARTS AND PUBLICATIONS

#### Tidal Prediction Stations In Malacca Strait

LOCATIONS OF PREDICTED TIDAL HEIGHT STATIONS  
ALONG THE MALACCA STRAIT

WGS84



## II

## NEW CHARTS AND PUBLICATIONS

NEW EDITION SINGAPOREAN CHARTS TO BE PUBLISHED ON 15<sup>TH</sup> OCTOBER 2021

<b>Chart Number</b>	: 502
<b>Title</b>	: Singapore Strait - Eastern Part
<b>Coverage</b>	: Lat      01° 07·00' N      01° 24·61' N Long    103° 51·43' E      104° 17·31' E
<b>Scale</b>	: 1 : 50 000
<b>Date to be Published</b>	: 15 <sup>th</sup> October 2021
<b>Size of Chart</b>	: 960.0 x 649.2 mm
<b>Description</b>	: This new edition includes updated surveys, changes to topography, aids to navigation and submarine cables.
	The existing chart of the same number published on 12 <sup>th</sup> September 2019 will be superseded.

NEW EDITION DUAL - BADGED CHARTS TO BE PUBLISHED ON 28<sup>TH</sup> OCTOBER 2021

<b>Chart Number</b>	: 4038
<b>Title</b>	: Malaysia and Singapore Johor Strait - Western Part
<b>Coverage</b>	: Lat      01° 10·80' N      01° 28·70' N Long    103° 28·60' E      103° 40·70' E
<b>Scale</b>	: 1 : 30 000
<b>Date to be Published</b>	: 28 <sup>th</sup> October 2021
<b>Size of Chart</b>	: 750.6 x 1100.2 mm
<b>Description</b>	: This new edition includes updated surveys, changes to topography, aids to navigation, and submarine cables.
	The existing chart of the same number published on 15 <sup>th</sup> August 2019 will be superseded.

## II

## NEW CHARTS AND PUBLICATIONS

NEW EDITION DUAL - BADGED CHARTS TO BE PUBLISHED ON 18<sup>TH</sup> NOVEMBER 2021

**Chart Number** : 4039

**Title** : Western Approaches to Main Strait

**Coverage** : Lat 01° 01·50' N 01° 13·70' N  
Long 103° 31·20' E 103° 49·00' E

**Scale** : 1 : 30 000

**Date to be Published** : 18<sup>th</sup> November 2021

**Size of Chart** : 1100.7 x 749.5 mm

**Description** : This new edition includes updated surveys, changes to topography, aids to navigation and submarine cables.

The existing chart of the same number published on 12<sup>th</sup> September 2019 will be superseded.

**Chart Number** : 4040

**Title** : Tuas View to Pulau Sakijang Bendera  
(S. John's Island)

**Coverage** : Lat 01° 07·40' N 01° 19·60' N  
Long 103° 34·10' E 103° 51·90' E

**Scale** : 1 : 30 000

**Date to be Published** : 18<sup>th</sup> November 2021

**Size of Chart** : 1100.6 x 749.5 mm

**Description** : This new edition includes updated surveys, changes to topography, aids to navigation, and submarine cables.

The existing chart of the same number published on 15<sup>th</sup> August 2019 will be superseded.

## II

## NEW CHARTS AND PUBLICATIONS

NEW EDITION SINGAPORE ENC TO BE PUBLISHED ON 28<sup>TH</sup> OCTOBER 2021

**Chart Number** : SG5C4038

**Title** : Johor Strait - Western Part

**Coverage** : Lat 01° 13·70' N 01° 31·20' N  
Long 103° 34·10' E 103° 46·30' E

**Compilation Scale** : 1 : 22 000

**Date Released** : 28<sup>th</sup> October 2021

**Description** : This new edition includes updated surveys, changes to topography, aids to navigation, and submarine cables.

The existing chart of the same number published on 20<sup>th</sup> August 2021 will be superseded.

NEW EDITION SINGAPORE ENC TO BE PUBLISHED ON 18<sup>TH</sup> NOVEMBER 2021

**Chart Number** : SG5C4039

**Title** : Western Approaches to Main Strait

**Coverage** : Lat 01° 01·50' N 01° 13·70' N  
Long 103° 31·20' E 103° 49·00' E

**Compilation Scale** : 1 : 22 000

**Date Released** : 18<sup>th</sup> November 2021

**Description** : This new edition includes updated surveys, changes to topography, aids to navigation, and submarine cables.

The existing chart of the same number published on 20<sup>th</sup> August 2021 will be superseded.

## II NOTICES TO MARINERS AND CHART CORRECTIONS

<b>GSP1/SP1</b>	5 Ed 15/01/21	Last NM 81/2021	(Maritime and Port Authority of Singapore)	<b>*NM 92/2021</b>
<b>Insert</b>	the accompanying block, centred on:			1°18·8'N      104°01·6'E
			(Maritime and Port Authority of Singapore)	<b>*NM 93/2021</b>

*Obstn*

1°17·33'N      103°40·76'E

<b>200</b>	4 Ed 1/09/15	Last NM 75/2021	(Royal Malaysian Navy No. 8/151(T)/2021)	<b>NM 94/2021</b>
<b>Insert</b>	legend, (Ru)			2°48·08'N      101°24·26'E

<b>202</b>	8 Ed 15/09/16	Last NM 90/2021	(Maritime and Port Authority of Singapore)	<b>*NM 92/2021</b>
<b>Insert</b>	the accompanying block, centred on:			1°19·2'N      104°01·7'E

**II**  
**TEMPORARY AND PRELIMINARY NOTICES**

**NIL**

**II**  
**TEMPORARY AND PRELIMINARY NOTICES**

**Cancelled Temporary and Preliminary Notices**

**NIL**

### III NAVIGATIONAL INFORMATION

\*(NM 95/2021)

**SINGAPORE PORT MARINE NOTICES / CIRCULARS**

The Port Marine Notices/Circulars shortlisted below would be of particular interest to Mariners. Details and complete list of Port Marine Notices/Circulars are available at this link:

<http://www.mpa.gov.sg/web/portal/home/port-of-singapore/circulars-and-notices>

**PMC No.****Subject**

037/2021

Revision to the number of persons onboard pleasure craft in the Port of Singapore

**PMN No.****Subject**

063/2021

Anchoring of vessels at Tuas Extension off AVLCC

064/2021

Construction of new jetty off Police Coast Guard Base (Lim Chu Kang)

065/2021

Reclamation works at Pulau Tekong

066/2021

Mooring and unmooring of vessels off Pulau Tekong

---

\*Source: Maritime and Port Authority of Singapore

### III AMENDMENTS TO PUBLICATIONS

\*(NM 96/2021) UPDATING OF PUBLICATION “SINGAPORE PORT INFORMATION 2020/2021”

#### LEAST DEPTHS OF ANCHORAGES

1. Page 105

#### B WESTERN SECTOR

Amend the following:

No.	Anchorage	Depth (m)	Latitude (N) Longitude (E)
21	Western Petroleum B (AWPB)	19·2	1°14·037' 103°48·398'

#### CHARACTERISTICS OF AIDS TO NAVIGATION

2. Page 133

#### TUAS VIEW EXTENSION

Amend the following:

Name Of Beacon / Buoy	Position Lat. N Long. E Deg Min	Structure, Colour & Shape	Light Characteristic	Owner
TVE 1 Buoy	01°12·508' 103°38·867'	Double black cones topmark bases together on black yellow black pillar	VQ(3)5s	MPA

#### WHARVES AND BERTH

3. Page 161

#### 24 JURONG ISLAND - SAKRA BASIN (PETROCHEMICAL CORPORATION OF SINGAPORE) (1°15·9'N, 103°43·0'E)

Amend the following:

Berth	Length of Berth Box	Max LOA	Depth Alongside (Year Surveyed)	Controlling Depth In Approaches
OPCS1	41m	41m	1·5m (2021)	2·5m
OPCS3	130m	130m	10·0m (2021)	10·0m
OPCS4	140m	140m	11·8m (2021)	12·0m
OPCS5	140m	140m	11·9m (2021)	11·9m
OPCS6	285m	259m	14·2m (2021)	14·2m
OPCBA	117m	100m	3·0m (2021)	3·0m

### III AMENDMENTS TO PUBLICATIONS

\*(NM 96/2021) UPDATING OF PUBLICATION “SINGAPORE PORT INFORMATION 2020/2021”

#### WHARVES AND BERTH

4. Page 166

#### 37 PULAU SEBAROK (SINGAPORE PETROLEUM CO LTD) (1°12·6'N, 103°47·9'E)

Amend the following:

Berth	Length of Berth Box	Max LOA	Depth Alongside (Year Surveyed)	Controlling Depth In Approaches
OSE1A	357m	<b>274·5m</b>	17·1m (2001)	16·6m

5. Page 172

#### 50 MARINA SOUTH – (MARINA BAY CRUISE CENTRE SINGAPORE) (1°15·9'N 103°51·6'E)

Amend the following:

Berth	Length of Berth Box	Max LOA	Depth Alongside (Year Surveyed)	Controlling Depth In Approaches
CM01	373m	335m	11·2m <b>(2021)</b>	11·5m
CM02	396m	360m	11·2m <b>(2021)</b>	11·3m

---

\*Source: Maritime and Port Authority of Singapore

## IV

### REPRINT OF MARITIME SAFETY INFORMATION

The following Maritime Safety Information have been shortlisted, as they would be of particular interest to mariners.

#### TT175

VESSELS IN EAST JOHOR STRAIT ARE ADVISED TO NAVIGATE WITH PARTICULAR ALERTNESS AND CAUTION WHEN NEAR THE PROJECT AREAS OFF PULAU TEKONG, CHANGI AND MALANG PAPAN AS SHALLOW WATER AREAS EXIST. VESSELS ARE REMINDED TO PROCEED AT A SAFE SPEED AND MAINTAIN A PROPER LOOK-OUT, PARTICULARLY FOR TUGS AND BARGES NAVIGATING NEAR THE PROJECT AREAS AND PASSENGER FERRIES CROSSING BETWEEN CHANGI AND PULAU TEKONG AND VICINITY OF PASIR GUDANG.

#### TT273

ALL VESSELS ARE ADVISED TO NAVIGATE WITH CAUTION, COMPLY WITH THE COLREGS, MAINTAIN VHF RADIO WATCH AND LISTEN TO TRAFFIC INFORMATION WHEN NAVIGATING IN THE SINGAPORE STRAIT AND PORT WATERS. MARINERS ARE ALSO ADVISED TO KEEP A GOOD LOOKOUT OF FREQUENT FERRIES CROSSING THE SINGAPORE STRAIT.

#### TT363 (AMENDED ON 140821UTC APRIL 2019).

MARINERS ARE REMINDED NOT TO ANCHOR IN ALL AREAS IN THE TSS, INCLUDING PRECAUTIONARY AREAS OF THE STRAITS OF MALACCA AND SINGAPORE AS WELL AS BETWEEN THE LANDWARD LIMITS OF THE TSS AND APPROACHES TO THE PORTS. VESSELS ENTERING ANY PORT IN ANY LITTORAL STATES ARE TO ANCHOR IN THE ANCHORAGES DESIGNATED BY THE RESPECTIVE LITTORAL STATES. MARINERS ARE ALSO REMINDED THAT EVERY CARE SHOULD BE TAKEN TO AVOID ANCHORING IN THE VICINITY OF SUBMARINE CABLES OR PIPELINES.

#### TT399

VESSELS ARRIVING TO SINGAPORE OR TRANSITING THROUGH THE STRAIT ARE RECOMMENDED TO UPDATE THEIR DESTINATION ACCURATELY IN THE AIS TO ENHANCE SITUATIONAL AWARENESS FOR OTHER TRAFFIC IN THE VICINITY. EG: SG-PEBGB FOR PILOT EASTERN BOARDING GROUND BRAVO.

#### TT418

WEST BOUND DEEP DRAFT VESSELS AND VLCCS ARE REMINDED TO COMPLY WITH THE RULES OF VESSELS NAVIGATING THROUGH THE STRAITS OF MALACCA AND SINGAPORE (SOMS). THEY SHALL ALLOW FOR AN UKC OF AT LEAST 3.5 METRES AT ALL TIMES DURING THE ENTIRE PASSAGE THROUGH THE SOMS AND AS FAR AS IT IS SAFE AND PRACTICABLE, PROCEED AT A SPEED OF NOT MORE THAN 12 KTS OVER THE GROUND IN THE WESTBOUND LANE OF THE SINGAPORE STRAIT (BETWEEN SOUTH OF ST JOHN'S ISLAND & RAFFLES LIGHTHOUSE). THEY ARE ADVISED TO BROADCAST, 8 HOURS BEFORE ENTERING THE TSS, NAVIGATIONAL INFORMATION GIVING NAME, DEADWEIGHT, DRAUGHT, SPEED AND TIMES OF PASSING HORSBURGH LIGHTHOUSE AND RAFFLES LIGHTHOUSE.

#### TT426

ALL MARINERS ARE REMINDED TO NAVIGATE WITH CAUTION IN THE PRECAUTIONARY AREAS AND TSS, MAINTAIN A GOOD LOOKOUT FOR CROSSING TRAFFIC. VESSELS INTENDING TO CROSS THE TSS SHALL DO SO ONLY WHEN IT IS SAFE AND SHALL AT ALL TIMES COMPLY WITH THE COLREGS.

#### TT642

ALL MARINERS NAVIGATING THROUGH THE STRAIT OF SINGAPORE ARE REMINDED TO MAINTAIN CLOSE AND CONTINUOUS MONITORING OF VESSELS POSITION. IN DETERMINING RISK OF GROUNDING, DIFFERENT METHODS OF POSITION FIXING SHOULD ALSO BE USED AS MEANS OF CROSS-CHECKING.

#### TT643

THERE IS REPORT OF CONCENTRATION OF FISHING VESSELS OBSERVED IN THE EASTBOUND TRAFFIC LANE IN THE VICINITY BETWEEN BUFFALO ROCK AND BATU BERHANTI. ALL VESSELS ARE ADVISED TO PROCEED AT A SAFE SPEED, KEEP A SHARP LOOK OUT AND NAVIGATE WITH EXTREME CAUTION AT ALL TIME.

## IV

## REPRINT OF MARITIME SAFETY INFORMATION

TT761

CABLE VESSEL ASEAN PROTECTOR AND ASSISTED BY GUARD BOATS ARE CARRYING CABLE RETRIEVAL WORKS IN THE SINGAPORE STRAIT OF VTIS SECTOR 7 FROM SOUTH OF TUAS VIEW EXTENSION WEST BOUND LANE, THROUGH TSS PRECAUTIONARY AREA AND TO SOUTH OF EAST BOUND LANE, FROM 11 AUG 2021 TO 18 SEP 2021. VESSELS ARE ADVISED TO NAVIGATE WITH CAUTION, PROCEED AT SAFE SPEED AND KEEP WELL CLEAR OF THE CABLE VESSEL.

TT762

SAFE WATER MARKS/BUOY AT APPROXIMATE POSITION 01-02.99N, 103-39.03E IS REPORTED UNLIT ON 18 AUGUST 2021 2300UTC. ALL VESSELS ARE TO NAVIGATE WITH CAUTION.

TT765

CONDUCTING OF RECLAMATION WORKS BOUNDED BY THE FOLLOWING COORDINATES FROM 1 SEP 2021.

1	1°19·63'N	104°24·08'E
2	1°20·05'N	104°24·08'E
3	1°20·28'N	104°24·51'E
4	1°20·26'N	104°24·59'E
5	1°20·18'N	104°24·70'E
6	1°20·06'N	104°24·78'E
7	1°19·88'N	104°24·84'E
8	1°19·68'N	104°24·83'E
9	1°19·63'N	104°24·80'E

VESSELS PASSING IN THE VICINITY ARE ADVISED TO GIVE A WIDE BERTH AND NAVIGATE WITH CAUTION

TT767

CABLE VESSEL "TENEO" AND ASSISTED BY GUARD BOATS "SUEANN" ARE CARRYING CABLE POST LAY INSPECTION AND BURIAL WORKS IN THE SINGAPORE STRAIT OF VTIS SECTOR 9 FROM SOUTH OF PJSB CROSS WEST BOUND LANE, THROUGH EAST BOUND LANE AND TOWARDS NORTH EAST OF HORSBURGH, FROM 22 SEP 2021 TO 5 OCT 2021. VESSELS ARE ADVISED TO NAVIGATE WITH CAUTION, PROCEED AT SAFE SPEED AND KEEP WELL CLEAR OF THE CABLE VESSEL.

TT768

THERE IS A REPORT OF AN UNAUTHORISED BOARDING ON 17 SEPTEMBER 2021 AT 2304LT IN POSITION LAT 01-16.92N LONG 104-19.00E. MARINERS ARE ADVISED TO KEEP A GOOD LOOK OUT AND MAINTAIN ANTI-PIRACY WATCH.

TT769

THERE IS A REPORT OF AN UNAUTHORISED BOARDING ON 18 SEPTEMBER 2021 AT 0245LT IN POSITION LAT 01-17.2N LONG 104-19.9E. MARINERS ARE ADVISED TO KEEP A GOOD LOOK OUT AND MAINTAIN ANTI-PIRACY WATCH.

TT961

VESSELS INTENDING TO CROSS THE TRAFFIC SEPARATION SCHEME (TSS) OR PRECAUTIONARY AREAS IN THE SINGAPORE STRAIT DURING THE HOURS OF DARKNESS ARE RECOMMENDED TO DISPLAY THE NIGHT SIGNALS CONSISTING OF 3 ALL ROUND GREEN LIGHTS IN A VERTICAL LINE AS DETAILED IN THE MARITIME AND PORT AUTHORITY OF SINGAPORE'S PORT MARINE CIRCULAR, 04 OF 2013 DATED 7 MAY 2013.

SR123 (AMENDED ON 100800UTC JUNE 2020)

SEA ROBBERIES ARE REPORTED IN THE SINGAPORE STRAIT. MARINERS ARE TO MAINTAIN A CONSTANT VISUAL AND RADAR WATCH FOR SMALL CRAFT AND REPORT ANY SUSPICIOUS ACTIVITIES IN THE SINGAPORE STRAIT TO VTIS SINGAPORE.

---

ISSUED BY SINGAPORE PORT OPERATIONS CONTROL CENTRE (as at 30<sup>th</sup> September 2021)

**V**  
**EXTRACT OF ADMIRALTY NOTICES TO MARINERS**  
**FOR DUAL-BADGED CHARTS**


These notices can also be accessed directly from UKHO Website:

<http://www.admiralty.co.uk/maritime-safety-information/admiralty-notices-to-mariners>





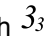
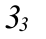


**3495\* SINGAPORE - Buoyage. Depths. Obstructions. Wrecks.**

Source: Maritime and Port Authority of Singapore

**Chart 4030** [ *previous update 2832/21* ] WGS84 DATUM

<b>Insert</b>	 Fl. Y. 4s	1°16'637"N	103°39'856'E
		1°16'656"N	103°39'889'E

**Chart 4033** [ *previous update 3064/21* ] WGS84 DATUM

<b>Insert</b>	 Fl. Y. 4s	1°16'656"N	103°39'889'E
		1°16'637"N	103°39'856'E
		1°18'173"N	103°38'856'E
<b>Replace</b>	 Wk, with  Wk	1°18'254"N	103°38'455'E
	depth,  , with depth 	1°17'848"N	103°38'741'E
<b>Delete</b>	 Obstn	1°18'033"N	103°38'647'E
	 Obstn	1°17'987"N	103°38'671'E

**3593 MALAYSIA - Peninsular Malaysia, East Coast - NM Block.**

Source: Malaysian Notice 6/122/21

**Chart 4042** [ *previous update New Edition 13/05/2021* ] WGS84 DATUM

<b>Insert</b>	the accompanying block, centred on:	1°19'7"N	104°11'6"E
---------------	-------------------------------------	----------	------------

**V**  
**EXTRACT OF ADMIRALTY NOTICES TO MARINERS**  
**FOR DUAL-BADGED CHARTS**

These notices can also be accessed directly from UKHO Website:

<http://www.admiralty.co.uk/maritime-safety-information/admiralty-notices-to-mariners>

**3801(P) SINGAPORE - Restricted area.**

Source: Maritime and Port Authority of Singapore

1. The restricted area, entry prohibited, has been extended westwards and is now bounded by the following positions:

1° 18·60'N, 104° 00·81'E

1° 18·10'N, 104° 00·81'E

1° 18·14'N, 104° 02·41'E

1° 19·49'N, 104° 02·37'E

1° 19·48'N, 104° 01·95'E

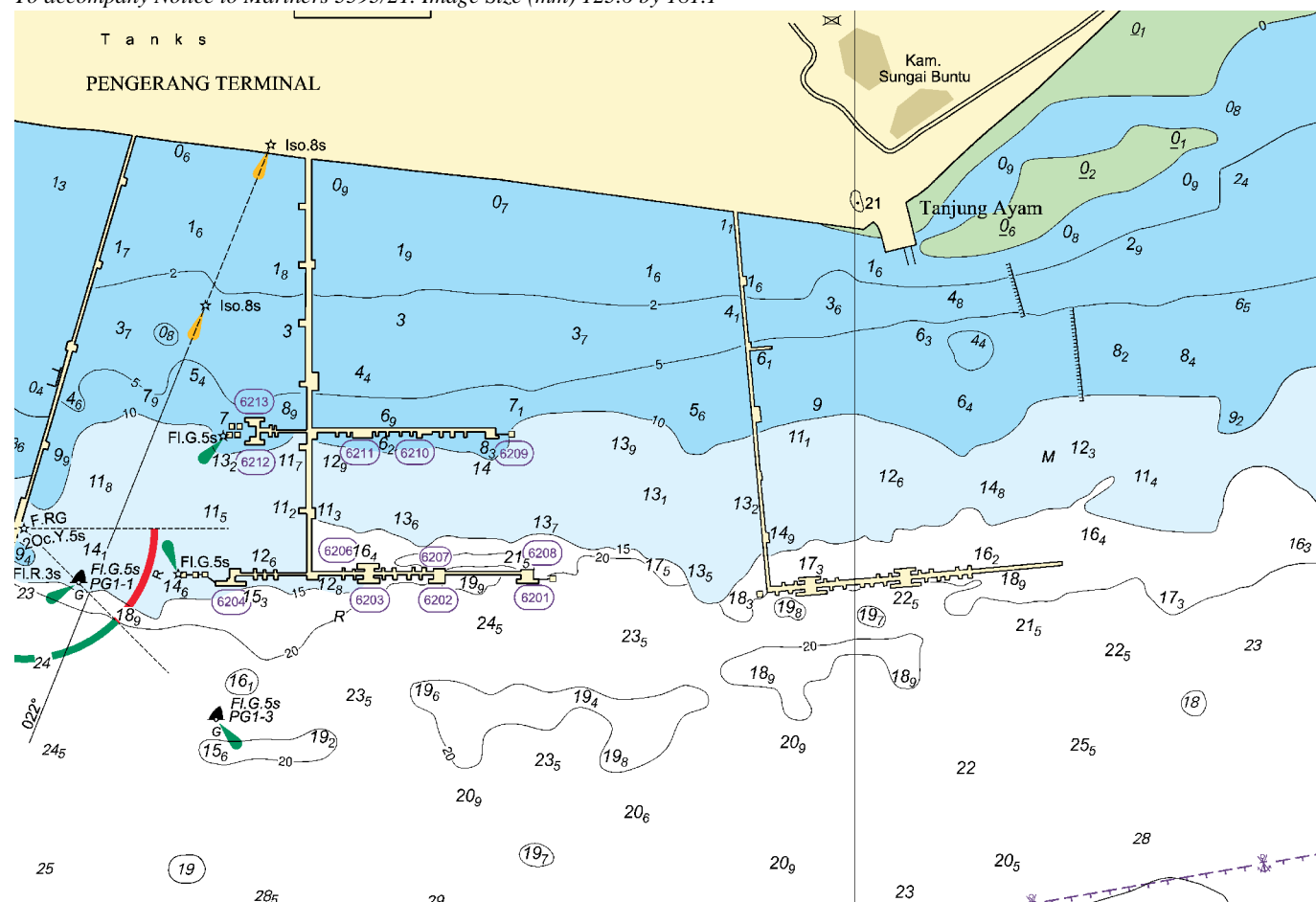
2. Charts 4041, 4043, and 8177 will be updated when full details are available.  
(WGS84 DATUM)

**Charts affected - 4041 - 4043 - 8177**

---

Updated to Admiralty Notices to Mariners no. 39 of 2021 dated 30<sup>th</sup> September 2021

To accompany Notice to Mariners 3593/21. Image Size (mm) 123.6 by 181.1



Block for Chart No 4042

## **HYDROGRAPHIC NOTE - Instructions**

1. Mariners are requested to notify the Chief Hydrographer, Maritime and Port Authority of Singapore, when new or suspected dangers to navigation are discovered, changes are observed in aids to navigation or where corrections to nautical publications may be necessary. Reports, which cannot be confirmed or are lacking in certain details should not be withheld.
2. Any ambiguities of time, positioning and depth should be stressed and any firm expectation of being able to check the information provided on a following voyage should be mentioned.
3. Mariners using satellite position fixing systems, eg. GPS, should provide details of equipment and datum used (where applicable). Where bearings (true or magnetic) are taken visually or by radar to fix a position, it should include more than two objects in order to provide a check on its accuracy. A position may also be defined by bearing and distance from a conspicuous object eg. beacon, lighthouse etc.
4. The note should include a tracing or a digital image of the chart used and the details should be clearly marked.
5. Echo sounders frequently register greater depths than the advertised maximum depth for the equipment, eg. a trace appearing at 50 metres may be in fact be 550 metres or even 1050 metres for equipment whose maximum depth is 500 metres. Erroneous depths caused by 2nd transmission error can usually be recognised by the following:
  - (a) the tracing being weaker than normal for the depth registered,
  - (b) the trace appearing to pass through the transmission line,
  - (c) the feathery nature of the trace.
6. Upon receipt of a hydrographic note, a Notice to Mariners may be issued. The sender's vessel or name is quoted as the source unless the same information is also received in foreign Notices to Mariners.
7. Reports of shoals, uncharted dangers and defects in aids to navigation may also be made to the appropriate Singapore Port Operations Control Centre on VHF Channels 10, 12, 14, 68 or 73.

## HYDROGRAPHIC NOTE

To:

Chief Hydrographer  
Maritime and Port Authority of Singapore  
7B Keppel Road #20-00 Tanjong Pagar Complex  
Singapore 089055

Tel : 1800 272 7777 / (65) 6272 7777  
Fax : (65) 6226 1076  
Email : [hydrographic@mpa.gov.sg](mailto:hydrographic@mpa.gov.sg)

### **Sender's Contact Details** :

Date : .....

Name of Vessel : .....

Address of Sender : .....

Tel : ..... Fax : .....

Email : .....

### **Nature of Observation** :

General Location : .....

Subject : .....

Position : Lat. .... Long. ....

Charts Used : .....

Date & Time of Observation : .....

Details : .....

.....

.....

Attachment : .....

### **Equipment Used** :

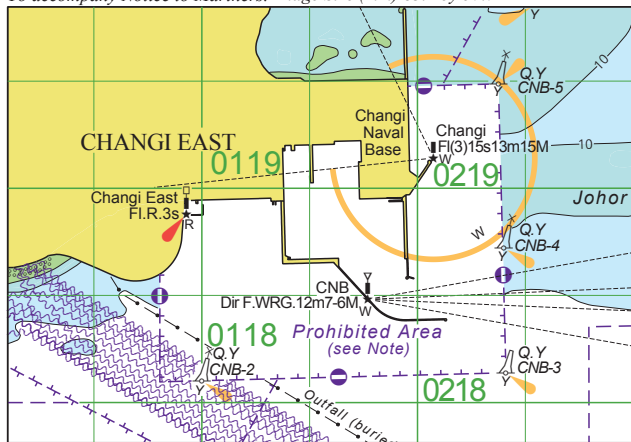
Type of Position Fixing : ..... GPS / DGPS ..... Others : .....

Type of Echo Sounder : .....

Name and Signature : .....

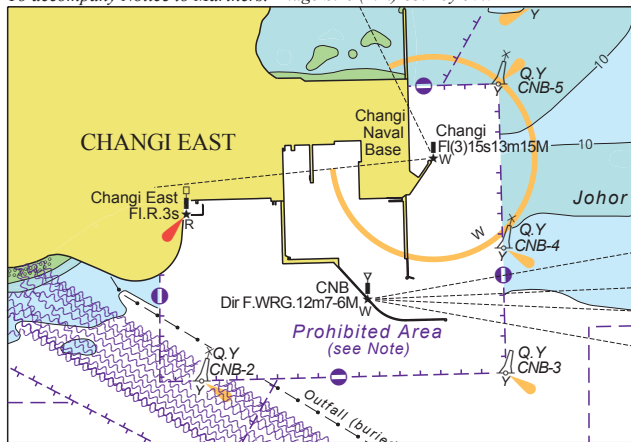
Ship's/Company's Stamp : .....

To accompany Notice to Mariners. Image Size (mm) 83.1 by 57.7



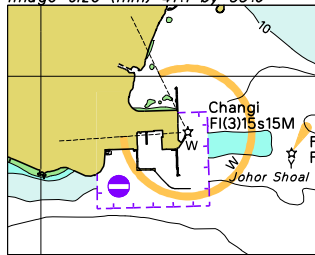
Block For Chart No. GSP1

To accompany Notice to Mariners. Image Size (mm) 83.1 by 57.7



Block For Chart No. SP1

To accompany Notices to Mariners  
Image size (mm) 41.1 by 33.0



Block for Chart No. 202

1°20'N

Obstn

Location on Chart

---

X

Caution : some computer printers might distort the tracings.  
Users are advised to check and, if necessary, adjust settings on the printer