



SINGAPOREAN NOTICES TO MARINERS

	CONTENT	Page
I	Index of Charts & Publications	167
II	New Publications	170
	Notices to Mariners and Chart Corrections	172
	Temporary and Preliminary Notices	175
III	Navigational Information	176
	Amendments to Publications	177
IV	Reprint of Radio Navigational Warnings	179
V	Reprint of Admiralty Notices to Mariners for Dual Badged Charts	180

The monthly Notices to Mariners contain corrective information affecting charts published by the Hydrographic Department, Maritime and Port Authority of Singapore. The information contained in these Notices should be updated on the charts affected. Notices under Section II apply only to the particular Singaporean Chart(s) indicated.

Mariners are requested to notify the Chief Hydrographer, Maritime and Port Authority of Singapore, immediately on the discovery of new dangers or suspected dangers to navigation and of changes or defects in aids to navigation. See Hydrographic Note on back page.

These notices can be accessed from the MPA webpage:

<http://www.mpa.gov.sg/infocentre/publications/noticesmari.htm>

Copies of these notices can also be obtained free from the Hydrographic Department, Maritime and Port Authority of Singapore or from our Chart Agent, Motion Smith telephone number (65) 62205098.

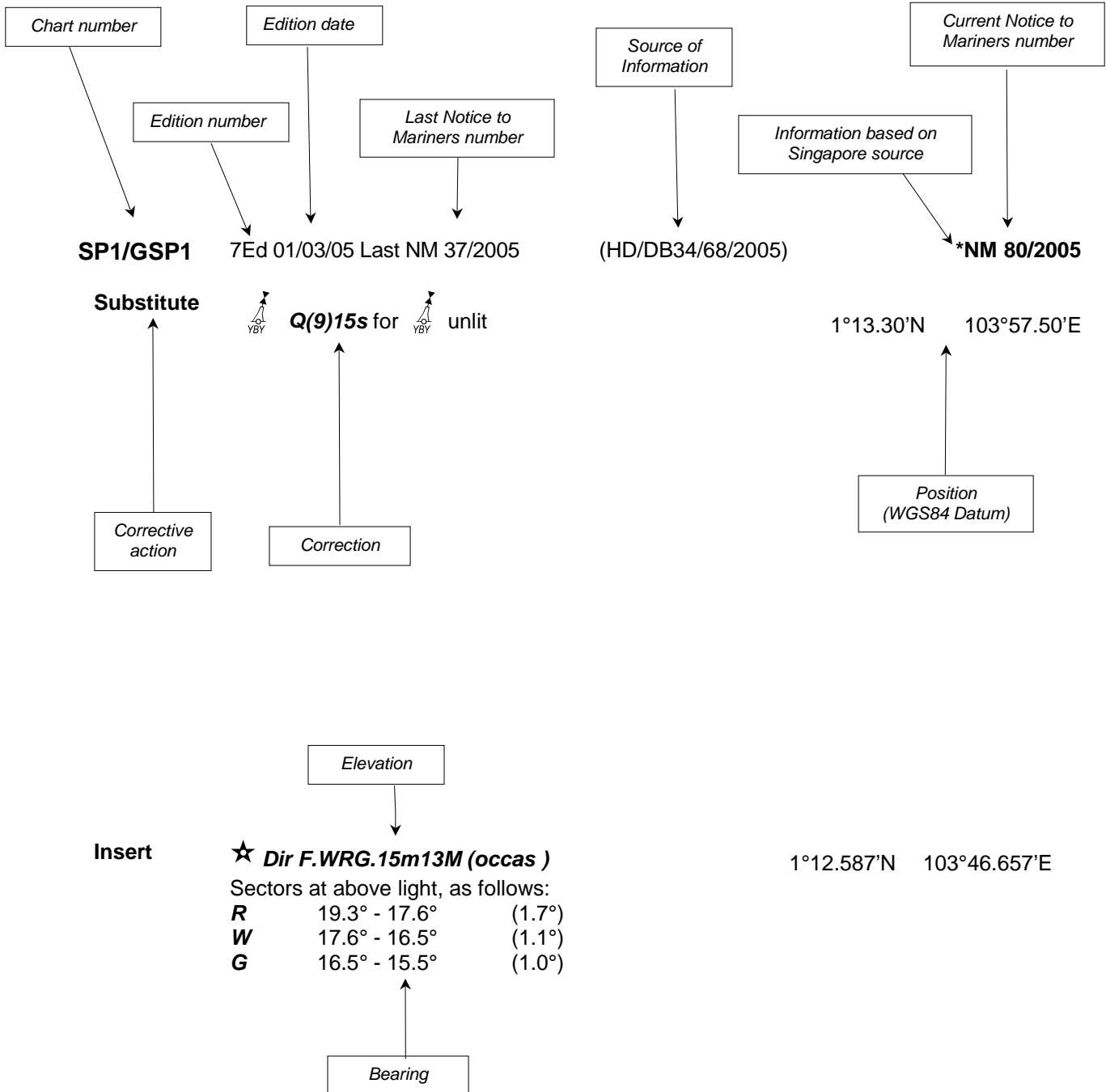
Hydrographic Department
Maritime and Port Authority of Singapore
P.O. Box 313
PSA Building Post Office
Singapore 911141

Tel : (65) 6375 1550

Fax : (65) 6278 7646

EXPLANATION OF FORMAT

The elements of a typical chart correction are explained below.



Notes:

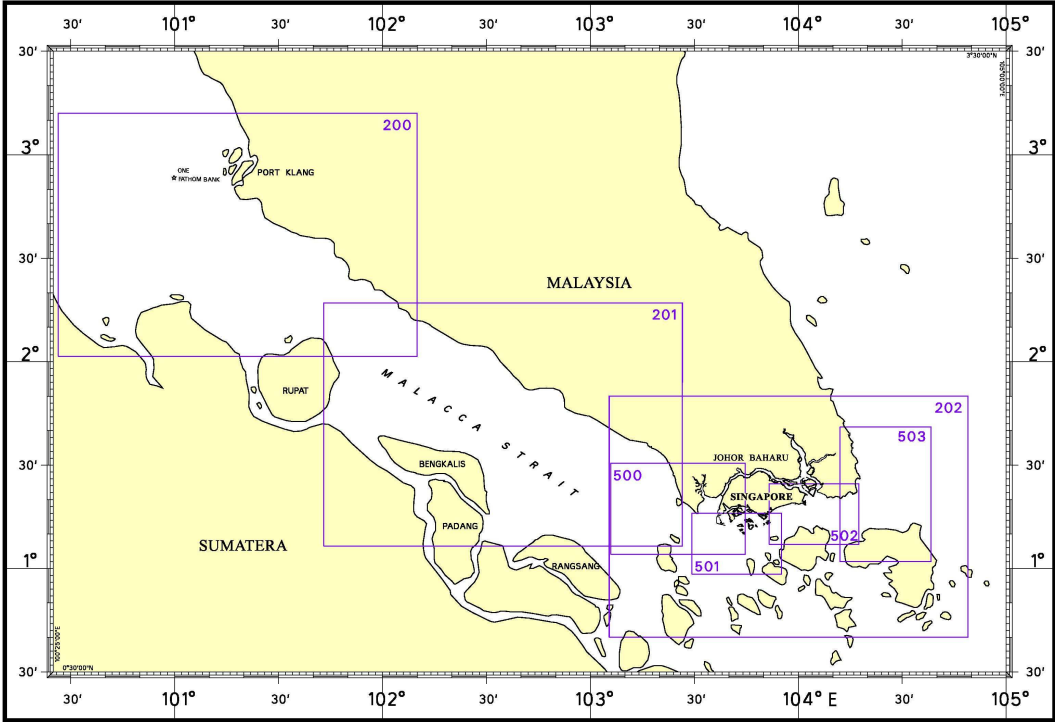
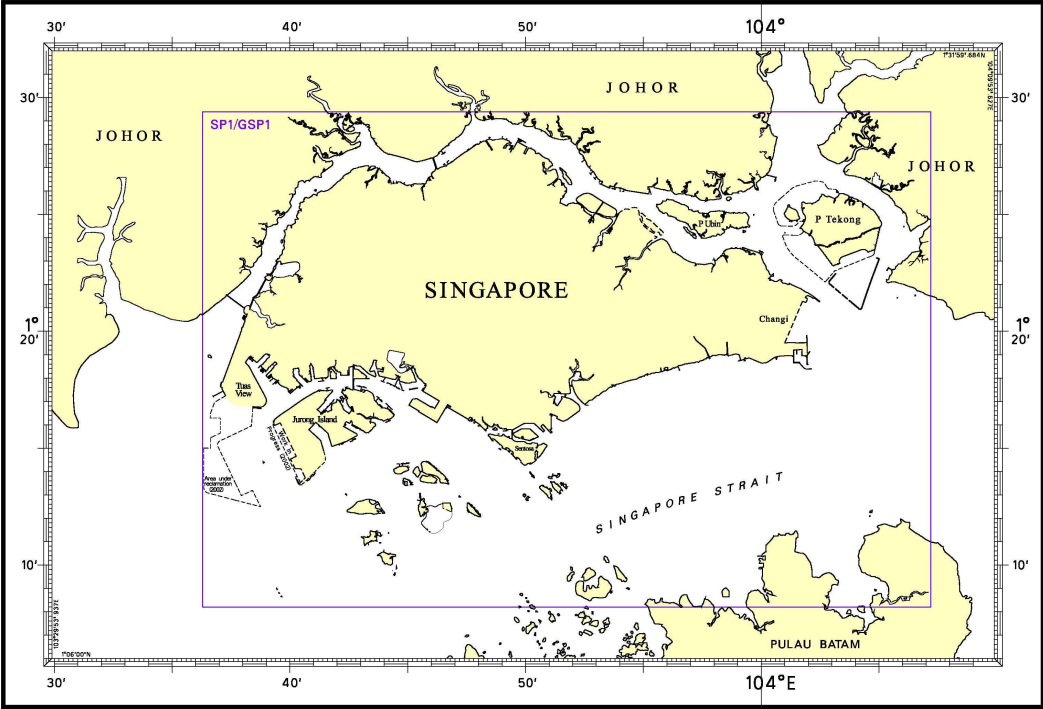
- a) Notice to Mariners number followed by:
 - T** indicates a Temporary Notice (eg. ***NM 80T/2005**).
 - P** indicates a Preliminary Notice (eg. ***NM 80P/2005**).
- b) Bearings are referred to True Compass in degrees clockwise from 000° to 359°. Bearings related to lights are from seaward.
- c) Heights and elevations are above Mean High Water Springs.

I

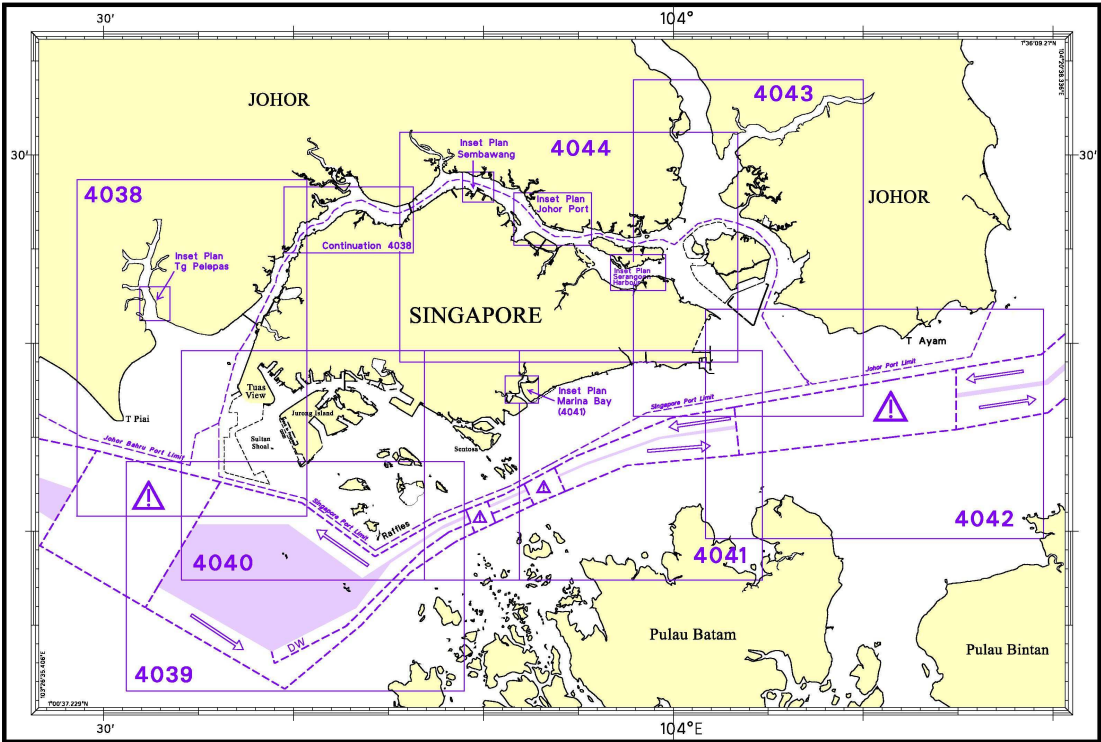
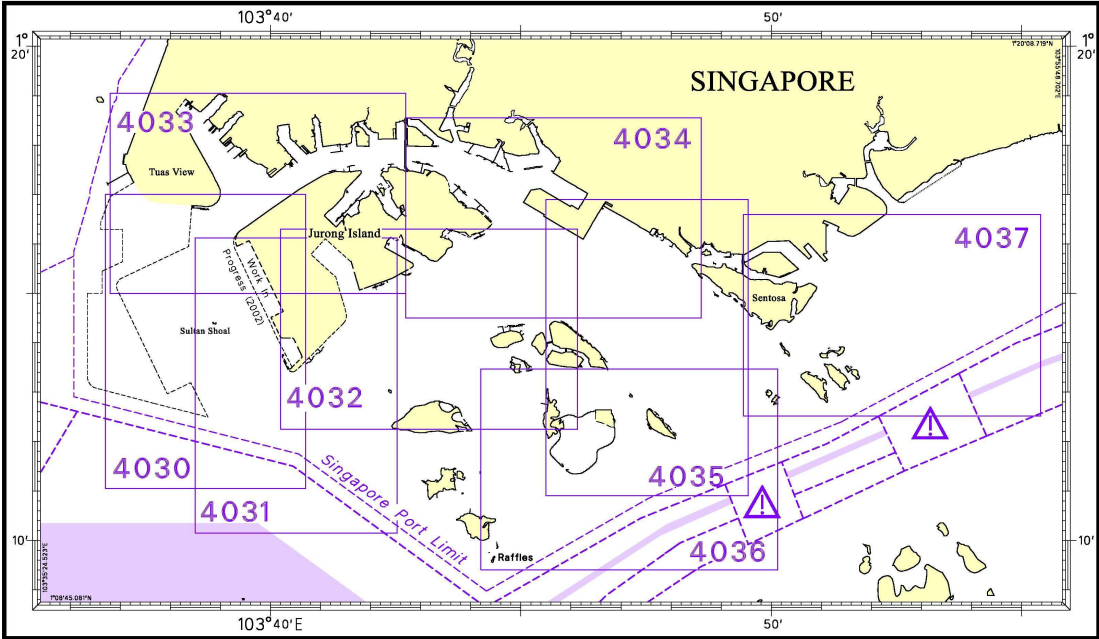
INDEX OF CHARTS AND PUBLICATIONS

NOTICES	DESCRIPTION	PAGE	NOTICES	DESCRIPTION	PAGE
	INDEX OF SINGAPOREAN CHARTS	168			
	INDEX OF DUAL BADGED CHARTS	169			
	New Editions SINGAPORE ELECTRONIC NAVIGATIONAL CHARTS	170			
	New Edition SINGAPOREAN CHART	170			
	New Editions DUAL BADGED CHARTS	170			
*111	SP1/GSP1	172			
*112	SP1/GSP1	172			
*113	SP1/GSP1	172			
*114	SP1/GSP1 502	172 174			
*115	SP1/GSP1 502	172 174			
*116	SP1/GSP1	172			
*117	SP1/GSP1	173			
*118	500	173			
*119	503	174			
*120	Reclamation in Pulau Ular	176			
*121	Updating of publication "SINGAPORE PORT INFORMATION - 2006/2007 EDITION"	177			

I
INDEX OF CHARTS AND PUBLICATIONS
INDEX OF SINGAPOREAN CHARTS



I
INDEX OF CHARTS AND PUBLICATIONS
INDEX OF DUAL BADGED CHARTS



II NEW PUBLICATIONS

NEW EDITIONS OF THE SINGAPORE ELECTRONIC NAVIGATIONAL CHARTS (ENC) COVERING DUAL BADGED CHARTS 4030, 4031, 4032 WERE RELEASED ON 10 AUG 2006 AND 4038 ON 17 AUG 2006.

For more information:

Please contact Ms Jenny Goh/Siti at Tel: 6375 1575/6 or visit our website:

<http://www.mpa.gov.sg/portdevelopment/services/enc.htm>

NEW EDITION SINGAPOREAN CHART TO BE PUBLISHED ON 21 SEPTEMBER 2006

Chart No. : 501
Title : Singapore Strait – Western Part
Coverage : Lat 0° 58.36' N 0° 16.00' N
 Long 103° 29.17' E 103° 55.05' E
Scale : 1:50 000
Date Published : 21 September 2006
Remarks : This new edition includes new surveys covering Raffles Shoal, Temasek, Sinki, Southern and East Keppel Fairway. New submarine cables and Nipa Transit Anchorage are also included. This new edition supersedes the earlier edition published on 15 September 2003.

NEW EDITION DUAL BADGED CHART TO BE PUBLISHED IN 21 SEPTEMBER 2006

Chart No. : 4040
Title : Tuas View to Pulau Sakijang Bendera (S John's Island)
Coverage : Lat 1° 07.40' N 1° 19.60' N
 Long 103° 34.10' E 103° 51.90' E
Scale : 1:30 000
Date Published : 21 September 2006
Remarks : This new edition includes new surveys covering West Jurong Channel, Raffles Shoal, Temasek, Sinki and East Keppel Fairway. This new edition supersedes the earlier edition published on 1 December 2005.







NEW EDITIONS DUAL BADGED CHARTS PUBLISHED IN AUGUST 2006

Chart No. : 4030
Title : Port of Singapore – West Jurong Anchorages and Temasek Fairway
Coverage : Lat 1° 11.05' N 1° 17.00' N
 Long 103° 36.70' E 103° 40.70' E
Scale : 1:10 000
Date Published : 10 August 2006
Remarks : This new edition includes new surveys covering Temasek Fairway and West Jurong Channel. This new edition supersedes the earlier edition published on 22 January 2004.

II NEW PUBLICATIONS

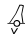
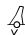
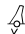
- Chart No.** : 4031
Title : Port of Singapore – Western Approaches to Jurong Island
Coverage : Lat 1° 10.15' N 1° 16.12' N
 Long 103° 38.50' E 103° 42.53' E
Scale : 1:10 000
Date Published : 10 August 2006
Remarks : This new edition includes new surveys covering Raffles Shoal, Selat Pauh, Southern Island Firing Area, Temasek Fairway, VLCC Jetties and Banyan Basin. This new edition supersedes the earlier edition published on 22 January 2004.
- Chart No.** : 4032
Title : Port of Singapore – Sinki Fairway
Coverage : Lat 1° 12.25' N 1° 16.30' N
 Long 103° 40.20' E 103° 46.13' E
Scale : 1:10 000
Date Published : 10 August 2006
Remarks : This new edition includes new surveys covering Selat Pauh, Southern Island Firing Area, VLCC Jetties, Banyan Basin and Selat Sinki. This new edition supersedes the earlier edition published on 22 January 2004.
- Chart No.** : 4038
Title : Malaysia and Singapore, Johor Strait, Western Part.
 Plan A, Town Reach (Scale 1:30 000)
 Plan B, Malaysia, Pelabuhan Tanjung Pelepas (Scale 1:15 000)
Coverage : Lat 1° 10.80' N 1° 28.70' N
 Long 103° 28.60' E 103° 40.70' E
Scale : 1:30 000
Date Published : 17 August 2006
Remarks : This new edition includes new surveys covering Temasek Fairway, Sinki Fairway and Raffles Shoal. This new edition supersedes the earlier edition published on 17 November 2005.
- Charts are available from** : Motion Smith
 76 Shenton Way #01-01
 Singapore 079119
 Tel : (65) 6220 5098
 (After office hours, Pager No.9304 4156, 9304 4159).
 Fax : (65) 6225 4902
 Email : sales@motsmith.com
 Internet Website : <http://www.motsmith.com>
-

II
NOTICES TO MARINERS AND CHART CORRECTIONS

SP1/GSP1	8Ed 30/03/06 Last NM 94/2006	(HD/HE025/100/2006)	*NM 111/2006
Insert	 FI.R.4s, NP 1		1°24.70'N 103°59.99'E
Delete	 FI.Y.4s	(HD/HE025/104/2006)	*NM 112/2006
Delete	 Obstn	(HD/HY Code C00100806)	* NM 113/2006
Delete	 Obstn	(HD/Job No. 51N/2006)	* NM 114/2006
Insert	 Wk		1°17.04'N 103°53.99'E
	 Wk		1°17.19'N 103°54.42'E
Insert	 FI(2)G.10s, Chenting	(HD/HY Code AA1007006)	* NM 116/2006
	 FI(3)G.10s, Gedong		1°22.50'N 103°38.75'E
			1°24.92'N 103°40.10'E


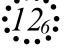
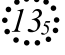

II NOTICES TO MARINERS AND CHART CORRECTIONS

(Port Marine Notices
No. 93 of 2006)* **NM 117/2006**

Insert	Limit of working area bounded by:	1°14.15'N	103°45.03'E
		1°14.19'N	103°45.08'E
		1°14.12'N	103°45.25'E
		1°14.07'N	103°45.28'E
		1°13.92'N	103°45.54'E
		1°13.93'N	103°45.58'E
		1°13.87'N	103°45.65'E
		1°13.84'N	103°45.65'E
		1°13.53'N	103°45.77'E
		1°13.38'N	103°45.79'E
		1°13.37'N	103°45.56'E
		1°13.53'N	103°45.22'E
		1°13.62'N	103°45.09'E
		1°13.71'N	103°44.86'E
		1°13.69'N	103°44.72'E
		1°13.89'N	103°44.61'E
	Legend, Works in progress (2006) centred at:	1°13.64'N	103°45.26'E
	 Fl(4)Y.15s, Ular 1	1°13.38'N	103°45.79'E
	 Fl.Y.4s, Ular 2	1°13.37'N	103°45.56'E
	 Fl.Y.8s, Ular 3	1°13.69'N	103°44.72'E

500	4Ed 15/08/05 Last NM 106/2006	(Royal Malaysian Navy MNM Edn 9/119/2003)	NM 118/2006
Insert	Limit of spoil ground in the vicinity of Permatang Panjang Pecked line joining positions:	1°20.19'N	103°08.30'E
		1°19.40'N	103°07.50'E
		1°21.09'N	103°05.80'E
		Legend Spoil Ground centred at:	1°20.85'N
Delete	Limit of spoil ground in the vicinity of Permatang Panjang Pecked line joining positions:	1°20.19'N	103°08.30'E
		1°20.39'N	103°07.50'E
		1°21.60'N	103°05.80'E
		Legend Spoil Ground centred at:	1°21.48'N

II
NOTICES TO MARINERS AND CHART CORRECTIONS

502	3Ed 25/10/05 Last NM 83/2006	(HD/Job No. 51N/2006)	* NM 114/2006
Delete	 Obstn		1°16.10'N 103°54.88'E
		(HD/HY Code A00110306)	* NM 115/2006
Insert	 Wk		1°17.04'N 103°53.99'E
	 Wk		1°17.19'N 103°54.42'E
<hr style="border-top: 1px dashed black;"/>			
503	2Ed 15/09/04 Last NM 91/2006	(HD/HE025/101/2006)	* NM 119/2006
Relocate			1°19.71'N 104°24.31'E
	(1°19.74'N, 104°24.19'E) (Previous NM 4/39/1992 is superseded)		
<hr style="border-top: 1px dashed black;"/>			

II
TEMPORARY AND PRELIMINARY NOTICES

Nil

III NAVIGATIONAL INFORMATION

* (NM 120/2006) RECLAMATION IN PULAU ULAR

Applicable to : Mariners operating at the western part of Singapore Waters.

Date : With effect from 12 July to 11 January 2007.

Location : At Pulau Ular, Pulau Busing and Pulau Bukom Kechil, within a working area bounded by the following co-ordinates (please see plan attached):

Working Area

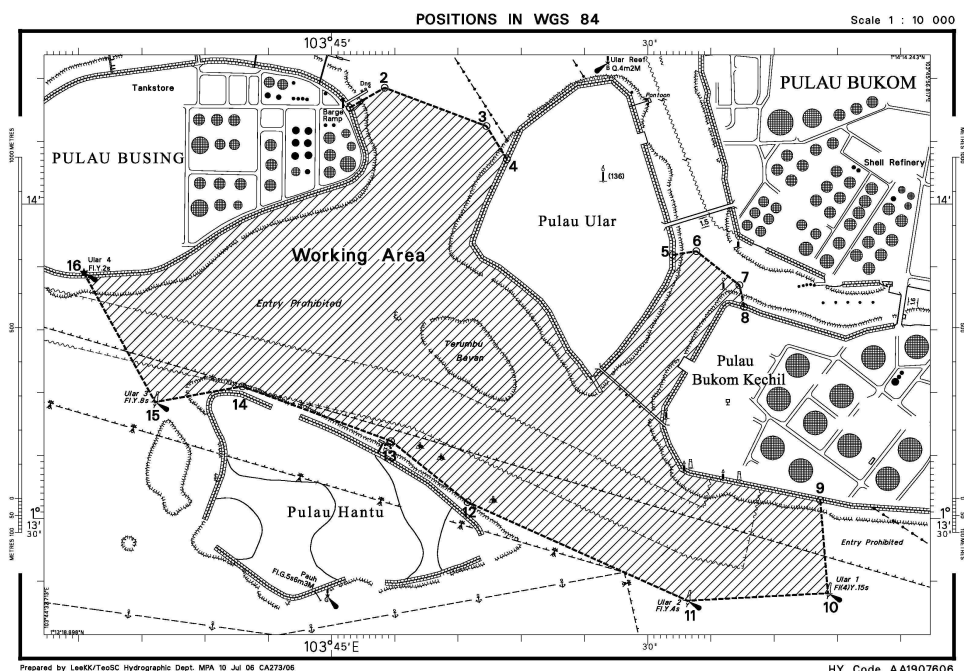
WGS 84 Datum			
<u>Point</u>	<u>Latitude (N)</u>	<u>Longitude (E)</u>	<u>Name/Buoy/Light Characteristics</u>
1	1°14.153'	103°45.029'	
2	1°14.185'	103°45.084'	
3	1°14.124'	103°45.245'	
4	1°14.071'	103°45.277'	
5	1°13.919'	103°45.540'	
6	1°13.925'	103°45.577'	
7	1°13.871'	103°45.645'	
8	1°13.836'	103°45.653'	
9	1°13.529'	103°45.773'	
10	1°13.381'	103°45.785'	Ular 1/Yellow Pillar/FI(4)Y.15s
11	1°13.369'	103°45.563'	Ular 2/Yellow Pillar/FI.Y.4s
12	1°13.526'	103°45.215'	
13	1°13.623'	103°45.094'	
14	1°13.710'	103°44.859'	
15	1°13.685'	103°44.721'	Ular 3/Yellow Pillar/FI.Y.8s
16	1°13.891'	103°44.608'	Ular 4/Yellow Trestle/FI.Y.2s

Working Hours : 24 hours daily including Sundays and Public Holidays.

Source : Port Marine Notice No. 93 of 2006 dated 11 July 2006.

(Previous SNM No. 3/36/06 is superseded.)

(Previous PMN No. 13 of 2006 dated 6 Feb 2006 is superseded.)



III
AMENDMENTS TO PUBLICATIONS

***(NM 121/2006) UPDATING OF PUBLICATION "SINGAPORE PORT INFORMATION 2006/2007 EDITION"**

1 Page 113

WEST JOHOR STRAIT

Insert the following:

Name of Beacon / Buoy	Position Lat. N Long. E Deg Min	Structure Colour & Shape	Light Characteristic	Owner
Chenting Buoy	01 22.496 103 38.750	Green conical	FI(2)G.10s	MPA
Gedong Buoy	01 24.918 103 40.100	Green conical	FI(3)G.10s	MPA

Source: HD/HY Code AA1007006

2 Page 136

KUALA JOHOR APPROACHES

Insert the following:

Name of Beacon / Buoy	Position Lat. N Long. E Deg Min	Structure Colour & Shape	Light Characteristic	Owner
NP 1 Buoy	01 24.700 103 59.990	Red Can	FI.R.4s	MPA

Source: HD/HE025/100/2006

3 Page 147 - Item 7

PASIR PANJANG TERMINAL (PSA Corporation Ltd) (1°17.2'N, 103°46.1'E)

Insert the following:

Berth	Length of Berth	Depth Alongside (Year Surveyed)	Controlling Depth In Approaches
P07	326m	14.3m (2006)	-

Source: HD/HY Code C00104706

III
AMENDMENTS TO PUBLICATIONS

4 Page 154 - Item 22

JURONG ISLAND (OILTANKING (S) LTD) (1°16.8'N, 103°44.1'E)

Insert the following:

Berth	Length of Berth	Depth Alongside (Year Surveyed)	Controlling Depth In Approaches
<i>MJ18</i>	<i>297m</i>	<i>15.8m (2006)</i>	<i>13.9m</i>
<i>MJ19</i>	<i>258m</i>	<i>14.5m (2006)</i>	<i>12.9m</i>

Source: HD/HY Code H00102606

5 NAVIGATIONAL CHANNELS – CONTROLLING DEPTHS

Page 107 – Item 3

Amend the following :

S No.	Locations	Controlling Depth (m)	
		Delete	<i>Insert</i>
3	East Johor Strait – Sembawang Shipyard to Ordnance Reach	9.8	<i>9.2</i>

Source: HD/Job No. 79C/2006

IV
REPRINT OF RADIO NAVIGATIONAL WARNINGS

Nil

V
REPRINT OF ADMIRALTY NOTICES TO MARINERS
FOR DUAL BADGED CHARTS

Nil

MPA ELECTRONIC NAVIGATIONAL CHARTS (ENC) DISTRIBUTORS

Please approach any of the appointed distributors to purchase the Singapore ENC.

PERSON TO CONTACT	ADDRESS	TELEPHONE/FAX NO./EMAIL/WEBSITE
Mr Chong Chee Meng General Manager	DPM (Singapore) Pte Ltd 1 Maritime Square, #09-72 Harbour Front Centre, Singapore 099253	Tel. No.: +65 6270 4060 Fax No.: +65 6276 3858 Email: sales@dpmsingapore.com.sg Website: http://www.dpmsingapore.com.sg
Ms Shirley Koh	Kelvin Hughes (S) Pte Ltd 8 Pandan Avenue #02-00, Singapore 609384	Tel. No.: +65 6545 9880 ext.12 Fax No.: +65 6545 8892 Email: shirley.koh@khsing.com Website: http://www.kelvinhughes.co.uk
Mr Philip Loh Sales Manager	Motion Smith 76 Shenton Way #01-01, Singapore 079119	Tel. No.: +65 6220 5098 Fax No.: +65 6225 4902 Email: sales@motsmith.com Website: http://www.motsmith.com
Mr Choy Kum Weng Manager	Vector Services Pte Ltd 2 Maritime Square #04-12B SPI Building, Singapore 099255	Tel. No.: +65 6278 7212 Fax No.: +65 6278 7212 Email: kwchoy@pacific.net.sg
Mr Looi Keen Wai Regional Sales Manager	Transas Marine Pacific Pte Ltd 750C Chai Chee Road, Technopark@Chai Chee, #04-07 Singapore 469003	Tel. No.: +65 6443 3061 Fax No.: +65 6443 3025 Email: looi@transas.com.sg Website: www.transas.com.sg
Mr George Arts President	Marine Press of Canada 640 Rue St-Paul Ouest, Suite 300 Montreal (QC) Canada, H3C1L9	Tel. No.: (514) 866-8342 Fax No.: (514) 866-9050 Email: sales@marinepress.com Website: www.marinepress.com
Mr Thomas Wilde Superintendent	HanseNautic GmbH Bade & Hornig, Eckardt & Messtorff Herrengarten 31 D-20459 Hamburg, Germany	Tel. No.: +49 40 374 811-32 Fax No.: +49 40 366 400 Email: info@HanseNautic.com Website: http://www.HanseNautic.com
Mr Daniel Schwarzwaelder Sales Manager	SevenCs AG + Co. KG Ruhrstrasse 90, D-22761 Hamburg, Germany	Tel. No.: +49 40 853 58 6940 Fax No.: +49 40 853 58 6949 Email: sales@chartworld.com Website: http://www.sevencs.com
Mr K. Shimiz ENC Manager	Japan Hydrographic Association ENC Service Division 5-3-3 Tsukiji, Chuo-ku Tokyo 104-0045, Japan	Tel. No.: +81 3 3543 0752 Fax No.: +81 3 3543 0695 Email: enc-support@jha.jp Website: http://www.jha.jp.com
Mr Jester-Kim Foreign Business Department Manager	E_MLX Co. Ltd Ssangyong Research No.2 Lab Sinseong-Dong 100 Yusong-Gu, Daejeon 305-804, Korea (ROK)	Tel. No.: +82 42 865 1893 Fax No.: +82 42 865 1884 Email: Jester-kim@emlx.co.kr
Mr C G Kim	Korean Ocean Development Co. Ltd 2ND Fl, Dongbang Bldg, 25-4, 4 Ga Jungang-Dong, Jung-Gu, Busan, South Korea	Tel. No.: +82 514 66 0760 Fax No.: +82 514 65 9345 Email: sales@chartkorea.com Website: http://chartkorea.com
Mr Kjell Nodland	C-Map Norway A/S P.O Box 212, N-4371 Egersund, Norway	Tel No.: +47 514 64 700 Fax No: +47 514 64 701 Email: market@c-map.no Website: http://www.c-map.no

Ms Marianne Barstad	PRIMAR STAVANGER Lervigsveien 36, P.O Box 60, N-4001 Stavanger, Norway	Tel. No.: +47 51 93 9500 Fax No.: +47 51 93 9501 Email: sales@primar.org Website: http://www.primar-stavanger.org
Mr Roar Moe International Marketing Coordinator	Maritime Information System AS (MARIS) Danholmen 25, No.3115 Tonsberg, Norway	Tel. No.: +47 33 30 42 50 Fax No.: +47 33 30 42 51 Email: roar.moe@maris.no Website: http://www.maris.no
Mr Andy Criddle Regional Sales Manager	United Kingdom Hydrographic Office Admiralty Way, Taunton, Somerset TA1 2DN United Kingdom	Tel. No.: +44 (0)1823 337900 Fax No.: +44 (0)1823 284077 Email: vargroup@ukho.gov.uk & andrew.criddle@ukho.gov.uk Website: www.ukho.gov.uk

CHART AGENT FOR MARITIME AND PORT AUTHORITY OF SINGAPORE (MPA) PUBLICATIONS

Agent's name : Motion Smith
Address : 76 Shenton Way # 01-01
Singapore 079119
Telephone : (65) 6220 5098
: (After Office hours: Pager No. 9304 4156, 9304 4159)
Fax No. : (65) 6225 4902
E-mail : sales@motsmith.com
Website : <http://www.motsmith.com>

HYDROGRAPHIC NOTE - Instructions

1. Mariners are requested to notify the Chief Hydrographer, Maritime and Port Authority of Singapore, when new or suspected dangers to navigation are discovered, changes are observed in aids to navigation or where corrections to nautical publications may be necessary. Reports which cannot be confirmed or are lacking in certain details should not be withheld.
2. Any ambiguities of time, positioning and depth should be stressed and any firm expectation of being able to check the information provided on a following voyage should be mentioned.
3. Mariners using satellite position fixing systems, eg. GPS, should provide details of equipment and datum used (where applicable). Where bearings (true or magnetic) are taken visually or by radar to fix a position, it should include more than two objects in order to provide a check on its accuracy. A position may also be defined by bearing and distance from a conspicuous object eg. beacon, lighthouse etc.
4. The note should include a tracing or a digital image of the chart used and the details should be clearly marked.
5. Echo sounders frequently register greater depths than the advertised maximum depth for the equipment, eg. a trace appearing at 50 metres may be in fact be 550 metres or even 1050 metres for equipment whose maximum depth is 500 metres. Erroneous depths caused by 2nd transmission error can usually be recognised by the following:
 - (a) the tracing being weaker than normal for the depth registered,
 - (b) the trace appearing to pass through the transmission line,
 - (c) the feathery nature of the trace.
6. An acknowledgement of receipt will be sent. When a Notice to Mariners is issued, the sender's vessel or name is quoted as the source unless the same information is also received in foreign Notices to Mariners.
7. Reports of shoals, uncharted dangers and defects in aids to navigation may also be made to the appropriate Singapore Port Operations Control Station on VHF Channels 10, 12, 14, 68 or 73.

HYDROGRAPHIC NOTE

To:

Chief Hydrographer
Hydrographic Department
Maritime and Port Authority of Singapore
460 Alexandra Road #20-00 PSA Building
Singapore 119963

Tel : (65) 6375 1550 or (65) 6375 1551
Fax : (65) 6278 7646
Email : hydrographic@mpa.gov.sg

Sender's Contact Details :

Date :
Name of Vessel :
Address of Sender :
Tel : Fax :
Email :

Nature of Observation :

General Location :
Subject :
Position : Lat. Long.
Charts Used :
Date & Time of Observation :
Details :
.....
.....
Attachment :

Equipment Used :

Type of Position Fixing : GPS / DGPS Others :
Type of Echo Sounder :

Name and Signature :

Ship's / Company's tamp :