



## SINGAPOREAN NOTICES TO MARINERS

---

	<b>CONTENT</b>	<b>Page</b>
I	Index of Charts & Publications	163
II	New Publications	166
	Notices to Mariners and Chart Corrections	168
	Temporary and Preliminary Notices	171
III	Navigational Information	172
	Amendments to Publications	173
IV	Reprint of Radio Navigational Warnings	175
V	Reprint of Admiralty Notices to Mariners for Dual Badged Charts	176

---

The monthly Notices to Mariners contain corrective information affecting charts published by the Hydrographic Department, Maritime and Port Authority of Singapore. The information contained in these Notices should be updated on the charts affected. Notices under Section II apply only to the particular Singaporean Chart(s) indicated.

---

Mariners are requested to notify the Chief Hydrographer, Maritime and Port Authority of Singapore, immediately on the discovery of new dangers or suspected dangers to navigation and of changes or defects in aids to navigation. See Hydrographic Note on back page.

The monthly Singaporean Notices to Mariners can be accessed directly from the MPA website:

<http://www.mpa.gov.sg/> > Circulars & Notices > Singaporean NTM

or

<http://www.mpa.gov.sg/infocentre/publications/noticesmari.htm>

This service is offered free of charge.

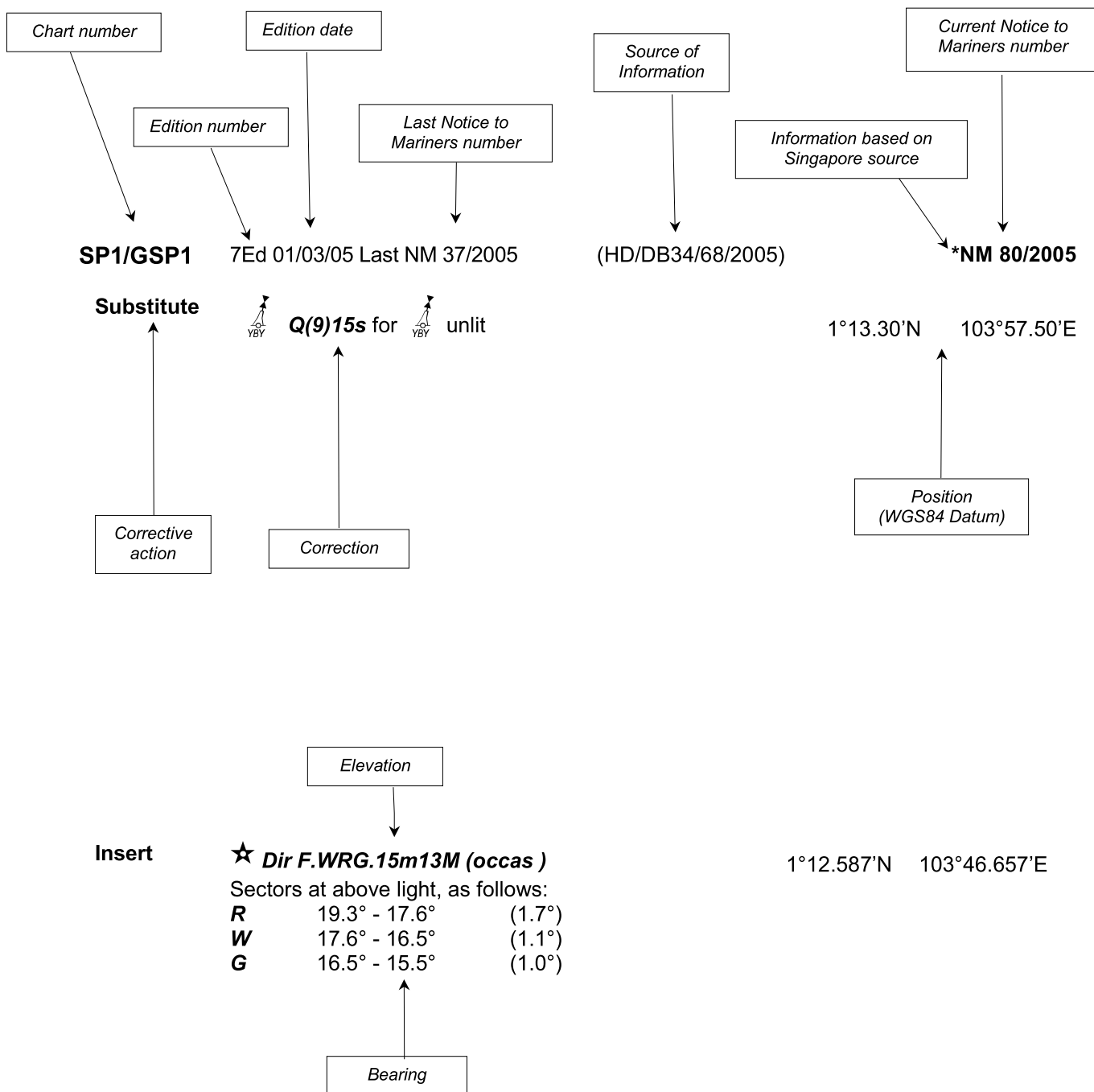
Hydrographic Department  
Maritime and Port Authority of Singapore  
460 Alexandra Road PSA Building #20-00  
Singapore 119963

Tel : (65) 6375 1227

Fax : (65) 6278 7646

## EXPLANATION OF FORMAT

The elements of a typical chart correction are explained below.



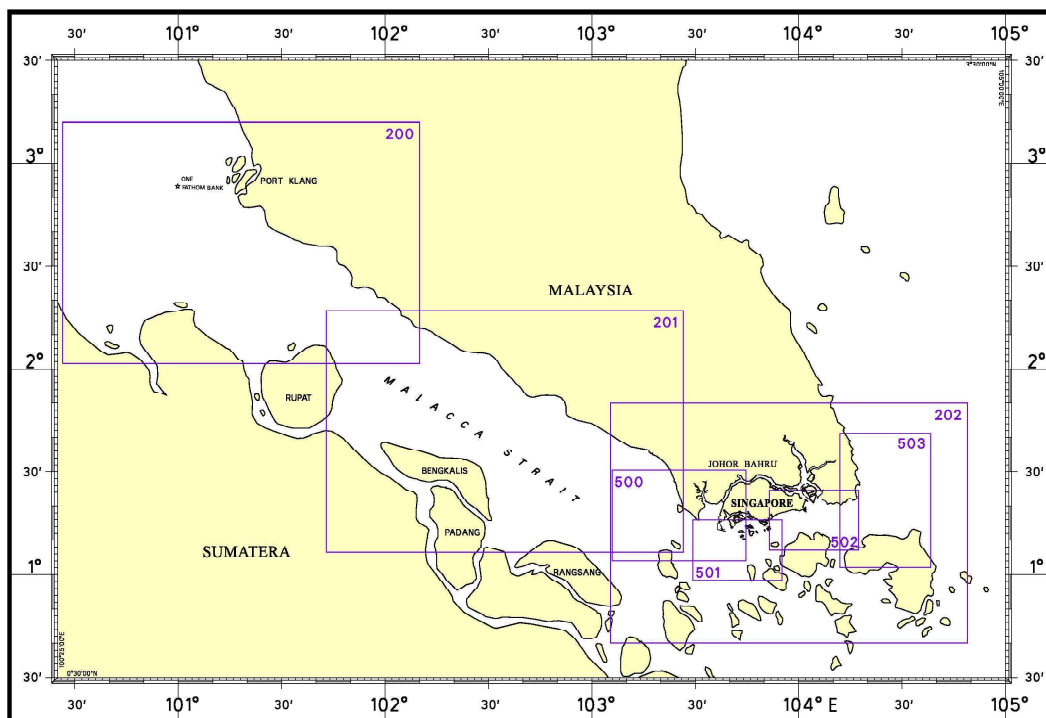
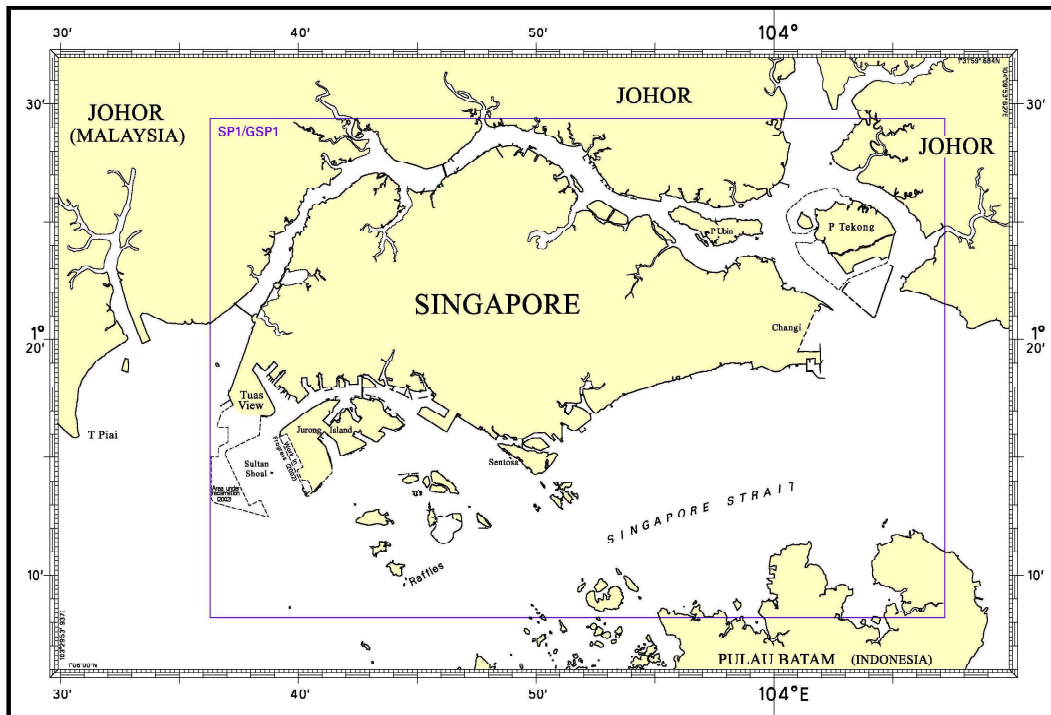
**Notes:**

- a) Notice to Mariners number followed by:  
**T** indicates a Temporary Notice (eg. **\*NM 80T/2005**).  
**P** indicates a Preliminary Notice (eg. **\*NM 80P/2005**).
- b) Bearings are referred to True Compass in degrees clockwise from 000° to 359°. Bearings related to lights are from seaward.
- c) Heights and elevations are above Mean High Water Springs.

I  
INDEX OF CHARTS AND PUBLICATIONS

NOTICES	DESCRIPTION	PAGE	NOTICES	DESCRIPTION	PAGE
	INDEX OF SINGAPOREAN CHARTS	164	*90	Updating of Publication "SINGAPORE PORT INFORMATION 2006/2007 EDITION"	173
	INDEX OF DUAL BADGED CHARTS	165			
	New Edition SINGAPOREAN CHARTS	166			
	New Edition DUAL BADGED CHARTS	167			
*77	SP1/GSP1	168			
	501	169			
78	200	168			
79	200	168			
80	201	168			
	202	168			
81	201	168			
*82	202	168			
83	202	168			
	501	169			
84	202	169			
	501	169			
*85	501	170			
	502	170			
86T	200	171			
*87T	202	171			
	501	171			
*88T	202	171			
	501	171			
*89	Port Marine Notices	172			

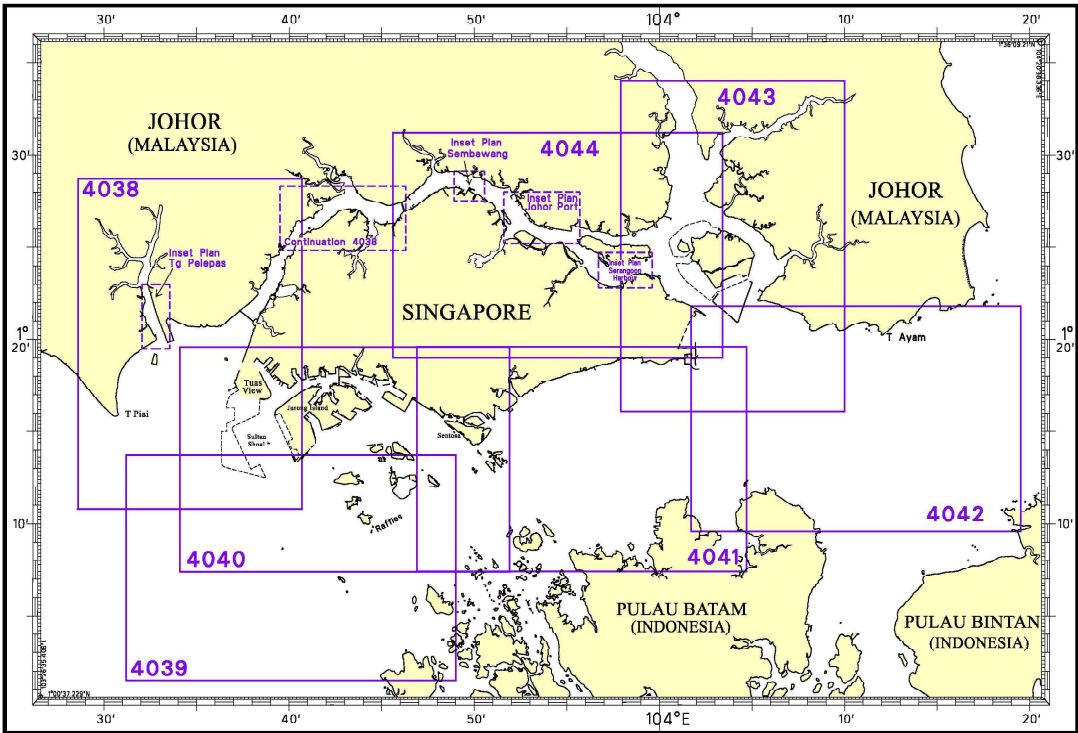
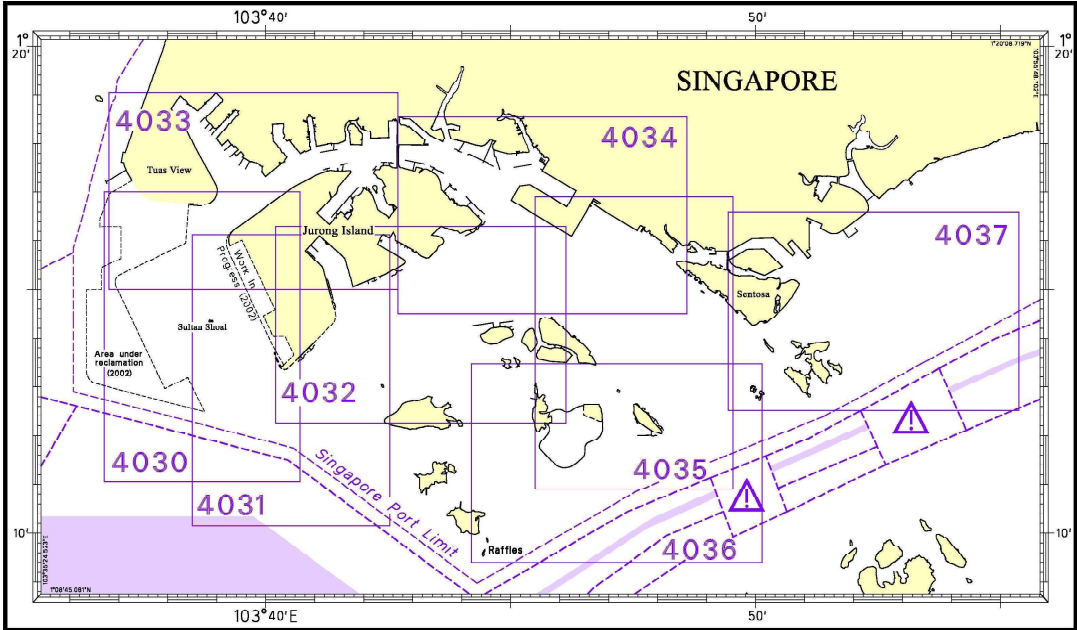
I  
**INDEX OF CHARTS AND PUBLICATIONS**  
INDEX OF SINGAPOREAN CHARTS



**Notes:**

Updated SINGAPOREAN Charts (excluding Charts SP1/GSP1 and 503) are available through our Print On Demand (POD) chart service and can be purchased from our authorised Chart Agents: Motion Smith and Hong Yunn Sea Professional Co., Ltd.

I  
**INDEX OF CHARTS AND PUBLICATIONS**  
INDEX OF DUAL BADGED CHARTS



## II NEW PUBLICATIONS

### NEW EDITION SINGAPOREAN CHARTS PUBLISHED ON 19 JULY 2007

**Chart No.** : SP1  
**Title** : Anchorages and Aids to Navigation  
**Coverage** : Lat 1°08.20' N 1°29.40' N  
                   Long 103°36.10' E 104°07.20' E  
**Scale** : 1 : 60 000  
**Date Published** : 19 July 2007  
**Size of chart** : 973.9 x 651.2 mm  
**Remarks** : This new edition includes new topography, working area, submarine cables and depth contours covering the entire chart. The Tidal Prediction for Tanjong Pagar is also included on the back page of the Chart. This new edition supersedes the earlier edition published on 3 January 2007.

**Chart No.** : GSP1  
**Title** : Anchorages and Aids to Navigation (with area reference)  
**Coverage** : Lat 1°08.20' N 1°29.40' N  
                   Long 103°36.10' E 104°07.20' E  
**Scale** : 1 : 60 000  
**Date Published** : 19 July 2007  
**Size of chart** : 973.9 x 651.2 mm  
**Remarks** : This new edition includes new topography, working area, submarine cables and depth contours covering the entire chart. The Tidal Prediction for Tanjong Pagar is also included on the back page of the Chart. This new edition supersedes the earlier edition published on 3 January 2007.

### NEW EDITION SINGAPOREAN CHARTS PUBLISHED ON 30 AUGUST 2007

**Chart No.** : 500  
**Title** : Malacca and Singapore Straits  
                   Pulau Pisang To Raffles Lighthouse  
**Coverage** : Lat 1°04.05' N 1°30.50' N  
                   Long 103°05.80' E 103°44.61' E  
**Scale** : 1:75 000  
**Date Published** : 30 August 2007  
**Size of chart** : 959.8 X 649.9 mm  
**Remarks** : The new edition includes updated surveys covering approaches to Temasek and Sinki Fairways, Raffles Shoal, new topography and new jetties of Jurong Island. The existing chart of the same number published on 15 Aug 2005 is superseded.

### NEW EDITION SINGAPOREAN CHARTS TO BE PUBLISHED ON 5 OCTOBER 2007

**Chart No.** : 201  
**Title** : Malacca Strait – Tanjung Keling to Western Entrance of Singapore Strait  
**Coverage** : Lat 1°06.43'N 2°16.99' N  
                   Long 101°42.91'E 103°26.45' E  
**Scale** : 1 : 200 000  
**Date Published** : 5 October 2007  
**Size of chart** : 960.0 X 650.00 mm  
**Remarks** : This new edition includes new submarine cables and anchorages. This new edition supersedes the earlier edition published on 15 September 2003.

## II NEW PUBLICATIONS

### NEW EDITION DUAL BADGED CHARTS PUBLISHED ON 5 JULY 2007







**Chart No** : 4034  
**Title** : Port of Singapore – East Jurong Channel, Pasir Panjang Terminal and West Keppel Fairway  
**Coverage** Lat 1° 14.50' N 1° 18.55' N  
 Long 103° 42.70' E 103° 48.60' E  
**Scale** : 1 : 10 000  
**Date Published** : 5 July 2007  
**Size of chart** : 1094.3 x 746.3 mm  
**Remarks** : This new edition includes updated surveys covering new jetties at North East of Jurong Island, Sinki Fairway, West Keppel Fairway, Pasir Panjang Terminal Berths P24 to P26, Pasir Panjang Wharves Berths P03 to P08 and mooring area for harbour crafts. The existing chart of the same number published on 10 November 2005 is superseded.

**Chart No** : 4035  
**Title** : Port of Singapore – Western Anchorage, Jong Fairway and Cruise Bay  
**Coverage** Lat 1° 10.90' N 1° 16.90' N  
 Long 103° 45.50' E 103° 49.54' E  
**Scale** : 1 : 10 000  
**Date Published** : 5 July 2007  
**Size of chart** : 749.4 x 1105.7 mm  
**Remarks** : This new edition includes updated surveys covering Sinki Fairway, West Keppel Fairway, Pasir Panjang Terminal Berths P24 to P26, Pasir Panjang Wharves Berths P03 to P08, South West of Sentosa, Pulau Sebarok and North of Pulau Bukom. The existing chart of the same number published on 8 September 2005 is superseded.

**Chart No** : 4036  
**Title** : Port of Singapore – Raffles Lighthouse To The Sisters  
**Coverage** Lat 1° 09.40' N 1° 13.47' N  
 Long 103° 44.20' E 103° 50.13' E  
**Scale** : 1 : 10 000  
**Date Published** : 5 July 2007  
**Size of chart** : 1100.0 x 750.1 mm  
**Remarks** : This new edition includes updated surveys covering Pulau Sebarok and a few areas in the Main Strait. The existing chart of the same number published on 8 September 2005 is superseded.

**Chart No** : 4043  
**Title** : Malaysia and Singapore – Kuala Johor and Sungai Johor  
**Coverage** Lat 1° 16.10' N 1° 34.00' N  
 Long 103° 57.90' E 104° 10.00' E  
**Scale** : 1 : 10 000  
**Date Published** : 5 July 2007  
**Size of chart** : 748.1 x 1099.6 mm  
**Remarks** : This new edition includes updated surveys covering Kuala Johor, Eastern Anchorages, Changi East and approaches to Sungai Santi. Abandoned submarine cables are also included. The existing chart of the same number published on 26 September 2002 is superseded.


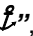
**II**  
**NOTICES TO MARINERS AND CHART CORRECTIONS**

<b>SP1/GSP1</b>	2 Ed 19/07/07 Last NM 71/2007	(HD/DB67/005/2007)	<b>*NM 77/2007</b>
<b>Relocate</b>	 Gusong, FI(3)G.10s6m4M (1°11.12'N ,103°47.65'E)		1°11.08'N 103°47.64'E
<hr/>			
<b>200</b>	2Ed 30/11/05 Last NM 72/2007	(Marine Dept. Peninsular Malaysia NTM 27/2007)	<b>NM 78/2007</b>
<b>Substitute</b>	Light, <b>FI(2)G.10s3m5M</b> for FI(2)R.10s3m5M		2°23.49'N 101°58.31'E
		(DGST Indon NM 214/2007)	<b>NM 79/2007</b>
<b>Insert</b>	 <b>FI(2)10s43m20M</b>		2°52.17'N 100°41.08'E
<hr/>			
<b>201</b>	2Ed 15/09/03 Last NM 54/2007	(DGST Indon NM 214/2007)	<b>NM 80/2007</b>
<b>Insert</b>	 <b>FI.5s18m12M</b>		1°09.98'N 103°23.33'E
		(DGST Indon NM 229/2007)	<b>NM 81/2007</b>
<b>Substitute</b>	Light, <b>FI.16m11M</b> for Q.13m11M		1°41.49'N 101°47.04'E
<hr/>			
<b>202</b>	5Ed 19/10/06 Last NM 73/2007	(DGST Indon NM 214/2007)	<b>NM 80/2007</b>
<b>Insert</b>	 <b>FI.5s18m12M</b>		1°09.98'N 103°23.33'E
		(HD/DB67/005/2007)	<b>*NM 82/2007</b>
<b>Relocate</b>	 FI(3)G.10s4M (1°11.03'N ,103°47.66'E)		1°11.08'N 103°47.64'E
		(DGST Indon NM 216/2007)	<b>NM 83/2007</b>
<b>Insert</b>	 <b>FI.4s18m12M</b>		1°07.73'N 103°41.97'E

## II NOTICES TO MARINERS AND CHART CORRECTIONS

(DGST Indon NM 226/2007)

**NM 84/2007**

<b>Delete</b>	maritime limit, pecked line, joining:	1°00.20'N	103°30.30'E
		1°03.03'N	103°32.05'E
	legend and symbol, "Anchorage Area  "	1°04.88'N	103°28.60'E
<b>Insert</b>	maritime limit, pecked line, joining:	1°03.03'N	103°32.05'E
		0°59.70'N	103°32.17'E
		1°00.20'N	103°30.30'E
	legend, " <b>Ship-To-Ship</b>  , centred on:	1°04.61'N	103°28.720'E

**501**      4Ed 21/09/06 Last NM 59/2007      (HD/DB67/005/2007)      **\*NM 77/2007**

<b>Relocate</b>	 Gusong, FI(3)G.10s6m4M (1°11.12'N ,103°47.64'E)	1°11.08'N	103°47.64'E

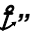
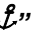
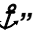
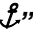
(DGST Indon NM 216/2007)

**NM 83/2007**

<b>Insert</b>	 <b>Fl.4s18m12M</b>	1°07.73'N	103°41.97'E
---------------	--	-----------	-------------

(DGST Indon NM 226/2007)

**NM 84/2007**

<b>Insert</b>	maritime limit, pecked line, joining:	1°03.03'N	103°32.05'E
		0°59.70'N	103°32.17'E
		1°00.20'N	103°30.30'E
		(limit of anchorage area)	
	maritime limit, pecked line, joining:	1°04.87'N	103°30.78'E
		1°03.00'N	103°29.17'E
	maritime limit, pecked line, joining:	1°03.64'N	103°29.72'E
		1°01.99'N	103°31.41'E
	maritime limit, pecked line, joining:	1°03.93'N	103°31.43'E
		1°02.81'N	103°30.58'E
	legends, centred on:		
	<b>"Transshipment</b>  "	1°04.90'N	103°30.11'E
	<b>"Gas Tanker</b>  "	1°03.77'N	103°30.58'E
	<b>"Floating Storage</b>  "	1°02.91'N	103°31.31'E
	<b>"Chemical Tankers</b>  "	1°01.53'N	103°30.14'E

II  
NOTICES TO MARINERS AND CHART CORRECTIONS

*"Bunker Service ⚓"* 1°00.70'N 103°31.39'E

(HD/HY Code A00110707) \***NM 85/2007**

Insert  *Obstn* 1°13.99'N 103°54.42'E

---

**502** 3Ed 25/10/05 Last NM 61/2007 (HD/HY Code A00110707) \***NM 85/2007**

Insert  *Obstn* 1°13.99'N 103°54.42'E

---

**II**  
**TEMPORARY AND PRELIMINARY NOTICES**

**200**            2Ed 30/11/05 Last NM 72/2007            (Marine Dept. Peninsular Malaysia NTM 26/2007)            **NM 86T/2007**

**Insert**            legend "***Collapsed***" against Kuala Langat Light Beacon            2°48.07'N            101°24.18'E

---

**202**            5Ed 19/10/06 Last NM 73/2007            (HD/DB67/005/2007)            **\*NM 87T/2007**

**Insert**            legend, "***Collapsed***" against Takong Light Beacon            1°05.90'N            103°43.25'E

(HD/DB67/006/2007)            **\*NM 88T/2007**

**Insert**             **Q(6)+LFl. 15s**            1°05.90'N            103°43.30'E

---

**501**            4Ed 21/09/06 Last NM 59/2007            (HD/DB67/005/2007)            **\*NM 87T/2007**

**Insert**            legend, "***Collapsed***" against Takong Light Beacon            1°05.90'N            103°43.25'E

(HD/DB67/006/2007)            **\*NM 88T/2007**

**Insert**             **Q(6)+LFl. 15s**            1°05.90'N            103°43.30'E

---

**III**  
**NAVIGATIONAL INFORMATION**

**\*(NM 89/2007) PORT MARINE NOTICES**

These notices can be accessed directly from MPA website:

[http://www.mpa.gov.sg/circulars\\_and\\_notices/portmarine\\_notices/pm\\_notices.htm](http://www.mpa.gov.sg/circulars_and_notices/portmarine_notices/pm_notices.htm)

<b>PMN No.</b>	<b>Subject</b>
84/2007	Dredging works at Sinki Fairway.
85/2007	Construction of staging ground at Marina South.
86/2007	Dredging and Marine construction works at Sungei Punggol, Pulau Punggol Barat and Pulau Punggol Timur.
90/2007	Dredging and construction works for container berths and stacking yards at Pasir Panjang Terminal (Phases C06 to C10).
100/2007	Rock-filling operations in West Keppel Fairway.
107/2007	Marine jetty construction works at Pulau Busing.
108/2007	Reclamation at Pulau Ular. (Revision of PMN No. 23/2007)

---

**III**  
**AMENDMENTS TO PUBLICATIONS**

**\*(NM 90/2007) UPDATING OF PUBLICATION "SINGAPORE PORT INFORMATION 2006/2007 EDITION"**

1 Page 124

**APPROACHES TO SHELL SBM**

Amend the following:

Name of Beacon / Buoy	Position	
	Lat. N	Long. E
	Deg Min	
Gusong Beacon	Delete	<i>Insert</i>
	01 11.119 103 47.645	<b>01 11.080</b> <b>103 47.640</b>

Source: HD/DB67/005/2007

2 Page 127

**KEPPEL HARBOUR**

Amend the following:

Name of Beacon / Buoy	Position	
	Lat. N	Long. E
	Deg Min	
Renggis Buoy	Delete	<i>Insert</i>
	01 15.586 103 48.934	<b>01 15.626</b> <b>103 48.841</b>

Source: HD/HE025/090/2007

3 Page 156 - Item 29

PULAU BUKOM (SHELL REFINERY) (1°14.0'N, 103°46.1'E)

Amend the following:

Berth	Depth Alongside (Year Surveyed)	
	Delete	<i>Insert</i>
Shell SBM	24.3m (2005)	<b>24.5m (2007)</b>

Source: HD/HY Code F00111307

**III**  
**AMENDMENTS TO PUBLICATIONS**

4 Page 156 - Item 30

WOODLANDS (SHELL REFINERY) (1°27.2'N, 103°46.5'E)

Amend the following:

Berth	Depth Alongside (Year Surveyed)		Controlling Depth In Approaches	
	Delete	<i>Insert</i>	Delete	<i>Insert</i>
Woodlands Oil Pier	7.7m (2000)	<b><i>7.7m (2007)</i></b>	-	<b><i>7.7m</i></b>

Source: HD/HY Code M00103307

---

**IV**  
**REPRINT OF RADIO NAVIGATIONAL WARNINGS**

Nil

V  
**REPRINT OF ADMIRALTY NOTICES TO MARINERS  
 FOR DUAL BADGED CHARTS**

These notices can be accessed directly from UKHO Website:

<http://www.ukho.gov.uk/amd/weeklyNms.asp>

**3384 \* SINGAPORE - Marina South Eastwards and T. Berlayar Westwards – Obstruction. Wrecks.**

Source: Maritime and Port Authority of Singapore

**Chart 4037** [previous update New Edition 24/05/2007] WGS84 DATUM

Insert  *Obstn* 1° 16'·243N., 103° 53'·463E.

**Chart 4040** [previous update 2857/07] WGS84 DATUM

Substitute  *Wk* for  *Wk* 1° 15'·76N., 103° 48'·02E.

**Chart 4041** [previous update New Edition 24/05/2007] WGS84 DATUM

Substitute  *Wk* for  *Wk* 1° 15'·76N., 103° 48'·02E.

**3385 \* SINGAPORE - Jurong Island Southwards and Terumbu Pempang Laut – Light. Works. Legends.  
 Buoyage.**


Light List Vol. F, 2006/07, 1686

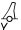
Source: Maritime and Port Authority of Singapore


**Chart 4031** [previous update 2857/07] WGS84 DATUM

Insert maritime limit, pecked line joining: (a) 1° 14'·573N., 103° 41'·407E.  
 (b) 1° 14'·611N., 103° 41'·537E.  
 (c) 1° 14'·300N., 103° 41'·626E.  
 (d) 1° 13'·769N., 103° 41'·145E.  
 (e) 1° 13'·923N., 103° 40'·992E.

legend, Works in progress (2007), orientated SW/NE, centred on: 1° 14'·145N., 103° 41'·438E.

 *FI.Y.4s, HL-2* (b) above





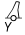
 *FI.Y.2s, HL-4* 1° 13'·863N., 103° 41'·230E.

Move  *FI(3)Y.15s, PKDBH-8*, from: 1° 14'·376N., 103° 41'·575E.  
 to:  
 legend, *Entry Prohibited* (see Note), from: (c) above  
 to: 1° 14'·285N., 103° 41'·619E.  
 to: 1° 14'·361N., 103° 41'·706E.

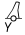


Delete former maritime limit, pecked line, and associated legend,  
 Works in progress (2002), within: (a)-(e) above

**Chart 4032** [previous update 2857/07] WGS84 DATUM

**V**  
**REPRINT OF ADMIRALTY NOTICES TO MARINERS**  
**FOR DUAL BADGED CHARTS**

Insert	maritime limit, pecked line joining:	(a) 1° 14'573N., 103° 41'407E. (b) 1° 14'611N., 103° 41'537E. (c) 1° 14'300N., 103° 41'626E. (d) 1° 13'769N., 103° 41'145E. (e) 1° 13'923N., 103° 40'992E.
	legend, Works in progress (2007), orientated SW/NE, centred on:	1° 14'145N., 103° 41'438E.
	 <i>Fl.Y.4s, HL-2</i>	(b) above
	 <i>Fl.Y.2s, HL-4</i>	1° 13'863N., 103° 41'230E.
Substitute	 <i>Fl(3)G.15s8m8M Sinki</i> for  <i>Fl(3)G.15s8m7M Sinki</i>	1° 14'048N., 103° 43'309E.
Move	 <i>Fl(3)Y.15s, PKDBH-8</i> , from: to: legend, <i>Entry Prohibited (see Note)</i> , from: to:	1° 14'376N., 103° 41'575E. (c) above 1° 14'285N., 103° 41'619E. 1° 14'361N., 103° 41'706E.
Delete	former maritime limit, pecked line, and associated legend, Works in progress (2002), within:	(a)-(e) above

**Chart 4040** [previous update 3384/07] WGS84 DATUM

Insert	maritime limit, pecked line joining:	(a) 1° 14'57N., 103° 41'41E. (b) 1° 14'61N., 103° 41'54E. (c) 1° 14'30N., 103° 41'63E. (d) 1° 13'77N., 103° 41'15E. (e) 1° 13'92N., 103° 40'99E.
	legend, Works in progress (2007), orientated SW/NE, centred on:	1° 14'15N., 103° 41'44E.
	 <i>Fl.Y.4s, HL-2</i>	(b) above
	 <i>Fl.Y.2s, HL-4</i>	1° 13'86N., 103° 41'23E.
Amend	legend, <i>Entry Prohibited (see Note)</i> , centred on: range of light to, 8M	1° 13'37N., 103° 40'77E. 1° 14'05N., 103° 43'31E.
Move	 <i>Fl(3)Y.15s, PKDBH-8</i> , from: to:	1° 14'38N., 103° 41'58E. (c) above
Delete	former maritime limit, pecked line, within: former legend, <i>Entry Prohibited (see Note)</i> , centred on:	(a)-(e) above 1° 14'10N., 103° 41'40E.

Updated to Admiralty Notices to Mariners Edition No. 34 of 2007 dated 23 August 2007.

**SINGAPORE ELECTRONIC NAVIGATIONAL CHARTS (ENC) DISTRIBUTORS**

Please approach any of the appointed distributors to purchase the Singapore ENC.

<b>CONTACT PERSON/ DESIGNATION</b>	<b>ADDRESS</b>	<b>TELEPHONE/FAX NO./EMAIL/WEBSITE</b>
Mr Chong Chee Meng General Manager	DPM (Singapore) Pte Ltd 1 Maritime Square, #09-72 Harbour Front Centre, Singapore 099253	Tel. No.: +65 6270 4060 Fax No.: +65 6276 3858 Email: <a href="mailto:sales@dpmsingapore.com.sg">sales@dpmsingapore.com.sg</a> Website: <a href="http://www.dpmsingapore.com.sg">http://www.dpmsingapore.com.sg</a>
Mr Hamzah Akhbar MDS Branch Manager	Kelvin Hughes(S) Pte Ltd 8 Pandan Avenue #02-00, Singapore 609384	Tel. No.: +65 6545 9880 ext.24 Fax No.: +65 6545 8892 Email: <a href="mailto:hamzah.akhbar@khsing.com">hamzah.akhbar@khsing.com</a> Website: <a href="http://www.kelvinhughes.co.uk">http://www.kelvinhughes.co.uk</a>
Mr Philip Loh Sales Manager	Motion Smith 76 Shenton Way #01-01, Singapore 079119	Tel. No.: +65 6220 5098 Fax No.: +65 6225 4902 Email: <a href="mailto:sales@motsmith.com">sales@motsmith.com</a> Website: <a href="http://www.motsmith.com">http://www.motsmith.com</a>
Mr Looi Keen Wai Regional Sales Manager	Transas Marine Pacific Pte Ltd 750C Chai Chee Road, Technopark@Chai Chee, #04-07 Singapore 469003	Tel. No.: +65 6443 3061 Fax No.: +65 6443 3025 Email: <a href="mailto:looi@transas.com.sg">looi@transas.com.sg</a> Website: <a href="http://www.transas.com.sg">http://www.transas.com.sg</a>
Mr Choy Kum Weng Director	Vector Services Pte Ltd 15 West Coast Highway, #02-14A Pasir Panjang Building Singapore 117861	Tel. No.: +65 6777 3602 Fax No.: +65 6777 9203 Email: <a href="mailto:kwchoy@pacific.net.sg">kwchoy@pacific.net.sg</a>
Mr George Arts President	Marine Press of Canada 640 Rue St-Paul Ouest, Suite 300 Montreal (QC) Canada, H3C1L9	Tel. No.: (514) 866-8342 Fax No.: (514) 866-9050 Email : <a href="mailto:sales@marinepress.com">sales@marinepress.com</a> Website: <a href="http://www.marinepress.com">http://www.marinepress.com</a>
Mr Thomas Wilde Superintendent	HanseNautic GmbH Bade & Hornig, Eckardt & Messtorff Herrengaben 31 D-20459 Hamburg, Germany	Tel. No.: +49 40 374 811-32 Fax No.: +49 40 366 400 Email: <a href="mailto:wilde@hansenautic.de">wilde@hansenautic.de</a> Website : <a href="http://www.HanseNautic.com">http://www.HanseNautic.com</a>
Ms Verena Borsos Manager	SevenCs AG + Co. KG Ruhrstrasse 90, D-22761 Hamburg, Germany	Tel. No.: +49 40 853 58 6940 Fax No.: +49 40 853 58 6949 Email: <a href="mailto:sales@chartworld.com">sales@chartworld.com</a> Website : <a href="http://www.sevencs.com">http://www.sevencs.com</a>
Mr Keiji Shimizu ENC Manager	Japan Hydrographic Association ENC Service Division 5-3-3 Tsukiji, Chuo-ku Tokyo 104-0045, Japan	Tel. No.: +81 3 3543 0752 Fax No.: +81 3 3543 0695 Email: <a href="mailto:enc-support@jha.jp">enc-support@jha.jp</a> Website: <a href="http://www.jha.jp.com">http://www.jha.jp.com</a>
Mr Jester-Kim Foreign Business Department Manager	E_MLX Co. Ltd Ssangyong Research No.2 Lab Sinseong-Dong 100 Yusong-Gu, Daejoen 305-804, Korea (ROK)	Tel. No.: +82 42 865 1893 Fax No.: +82 42 865 1884 Email: <a href="mailto:Jester-kim@emlx.co.kr">Jester-kim@emlx.co.kr</a>
Mr C G Kim Managing Director	Korean Ocean Development Co. Ltd 2ND Fl, Dongbang Bldg, 25-4, 4 Ga Jungang-Dong, Jung-Gu, Busan, South Korea	Tel. No.: +82 514 66 0760 Fax No.: +82 514 65 9345 Email: <a href="mailto:sales@chartkorea.com">sales@chartkorea.com</a> Website: <a href="http://www.chartkorea.com">http://www.chartkorea.com</a>

**SINGAPORE ELECTRONIC NAVIGATIONAL CHARTS (ENC) DISTRIBUTORS**  
Please approach any of the appointed distributors to purchase the Singapore ENC.

<b>CONTACT PERSON/ DESIGNATION</b>	<b>ADDRESS</b>	<b>TELEPHONE/FAX NO./EMAIL/WEBSITE</b>
Mr Kjell Nodland	C-Map Norway A/S P.O Box 212 , N-4371 Egersund, Norway	Tel No.: +47 514 64 700 Fax No.: +47 514 64 701 Email: <a href="mailto:market@c-map.no">market@c-map.no</a> Website : <a href="http://www.c-map.no">http://www.c-map.no</a>
Mr Roar Moe International Marketing Coordinator	Maritime Information System AS (MARIS) Danholmen 25, No.3115 Tonsberg, Norway	Tel. No.: +47 33 30 42 50 Fax No.: +47 33 30 42 51 Email: <a href="mailto:roar.moe@maris.no">roar.moe@maris.no</a> Website: <a href="http://www.maris.no">http://www.maris.no</a>
Ms Eva Hegland Sales, order and distributor support.	PRIMAR STAVANGER Lervigsveien 36, P.O Box 60, N-4001 Stavanger, Norway	Tel. No.: +47 51 93 9500 Fax No.: +47 51 93 9501 Email: <a href="mailto:sales@primar.org">sales@primar.org</a> Website : <a href="http://www.primar-stavanger.org">http://www.primar-stavanger.org</a>
Mr Andy Criddle Regional Sales Manager	United Kingdom Hydrographic Office Admiralty Way, Taunton, Somerset TA1 2DN United Kingdom	Tel. No.: +44 (0)1823 337900 Fax No.: +44 (0)1823 284077 Emails: <a href="mailto:vargroup@ukho.gov.uk">vargroup@ukho.gov.uk</a> & <a href="mailto:andrew.criddle@ukho.gov.uk">andrew.criddle@ukho.gov.uk</a> Website: <a href="http://www.ukho.gov.uk">http://www.ukho.gov.uk</a>

**CHART AGENTS FOR MARITIME AND PORT AUTHORITY OF SINGAPORE (MPA) PUBLICATIONS**

**Agent's name** : MOTION SMITH  
**Address** : 76 Shenton Way # 01-01  
Singapore 079119  
**Telephone** : (65) 6220 5098  
: (After Office hours: Pager No. 9304 4156, 9304 4159)  
**Fax No.** : (65) 6225 4902  
**E-mail** : [sales@motsmith.com](mailto:sales@motsmith.com)  
**Website** : <http://www.motsmith.com>

**Agent's name** : HONG YUNN SEA PROFESSIONAL CO., LTD  
**Address** : 198 Ta Tong 1<sup>st</sup> Road, Kaohsiung 800,  
Taiwan  
**Telephone** : 886-7-2217367  
**Fax No.** : 886-7-2818180  
**E-mail** : [kimchang@hongyunn.com.tw](mailto:kimchang@hongyunn.com.tw)  
**Website** : <http://www.hongyunn.com.tw>

## HYDROGRAPHIC NOTE - Instructions

1. Mariners are requested to notify the Chief Hydrographer, Maritime and Port Authority of Singapore, when new or suspected dangers to navigation are discovered, changes are observed in aids to navigation or where corrections to nautical publications may be necessary. Reports, which cannot be confirmed or are lacking in certain details should not be withheld.
2. Any ambiguities of time, positioning and depth should be stressed and any firm expectation of being able to check the information provided on a following voyage should be mentioned.
3. Mariners using satellite position fixing systems, eg. GPS, should provide details of equipment and datum used (where applicable). Where bearings (true or magnetic) are taken visually or by radar to fix a position, it should include more than two objects in order to provide a check on its accuracy. A position may also be defined by bearing and distance from a conspicuous object eg. beacon, lighthouse etc.
4. The note should include a tracing or a digital image of the chart used and the details should be clearly marked.
5. Echo sounders frequently register greater depths than the advertised maximum depth for the equipment, eg. a trace appearing at 50 metres may be in fact be 550 metres or even 1050 metres for equipment whose maximum depth is 500 metres. Erroneous depths caused by 2nd transmission error can usually be recognised by the following:
  - (a) the tracing being weaker than normal for the depth registered,
  - (b) the trace appearing to pass through the transmission line,
  - (c) the feathery nature of the trace.
6. An acknowledgement of receipt will be sent. When a Notice to Mariners is issued, the sender's vessel or name is quoted as the source unless the same information is also received in foreign Notices to Mariners.
7. Reports of shoals, uncharted dangers and defects in aids to navigation may also be made to the appropriate Singapore Port Operations Control Station on VHF Channels 10, 12, 14, 68 or 73.

**HYDROGRAPHIC NOTE**

To:

Chief Hydrographer  
Hydrographic Department  
Maritime and Port Authority of Singapore  
460 Alexandra Road PSA Building #20-00  
Singapore 119963

Tel : (65) 6375 1227  
Fax : (65) 6278 7646  
Email : [hydrographic@mpa.gov.sg](mailto:hydrographic@mpa.gov.sg)

**Sender's Contact Details** :

Date : .....  
Name of Vessel : .....  
Address of Sender : .....  
Tel : ..... Fax : .....  
Email : .....

**Nature of Observation** :

General Location : .....  
Subject : .....  
Position : Lat. .... Long. ....  
Charts Used : .....  
Date & Time of Observation : .....  
Details : .....  
.....  
.....  
Attachment : .....

**Equipment Used** :

Type of Position Fixing : ..... GPS / DGPS ..... Others : .....  
Type of Echo Sounder : .....

Name and Signature : .....

Ship's/Company's stamp : .....