



## SINGAPOREAN NOTICES TO MARINERS

---

SECTION	CONTENT	Page
I	Index of Charts & Publications	189
II	New Publications	194
	Notices to Mariners and Chart Corrections	196
	Temporary and Preliminary Notices	198
III	Navigational Information	199
	Amendments to Publications	201
IV	Reprint of Radio Navigational Warnings	202
V	Reprint of Admiralty Notices to Mariners for Dual Badged Charts	203

---

The monthly Notices to Mariners contain corrective information affecting charts published by the Hydrographic Department, Maritime and Port Authority of Singapore. The information contained in these Notices should be updated on the charts affected. Notices under Section II apply only to the particular Singaporean Chart(s) indicated.

---

Mariners are requested to notify the Chief Hydrographer, Maritime and Port Authority of Singapore, immediately on the discovery of new dangers or suspected dangers to navigation and of changes or defects in aids to navigation. See Hydrographic Note on back page.

The monthly Singaporean Notices to Mariners can be accessed directly from the MPA website:

<http://www.mpa.gov.sg/> > Circulars & Notices > Singaporean NTM

or

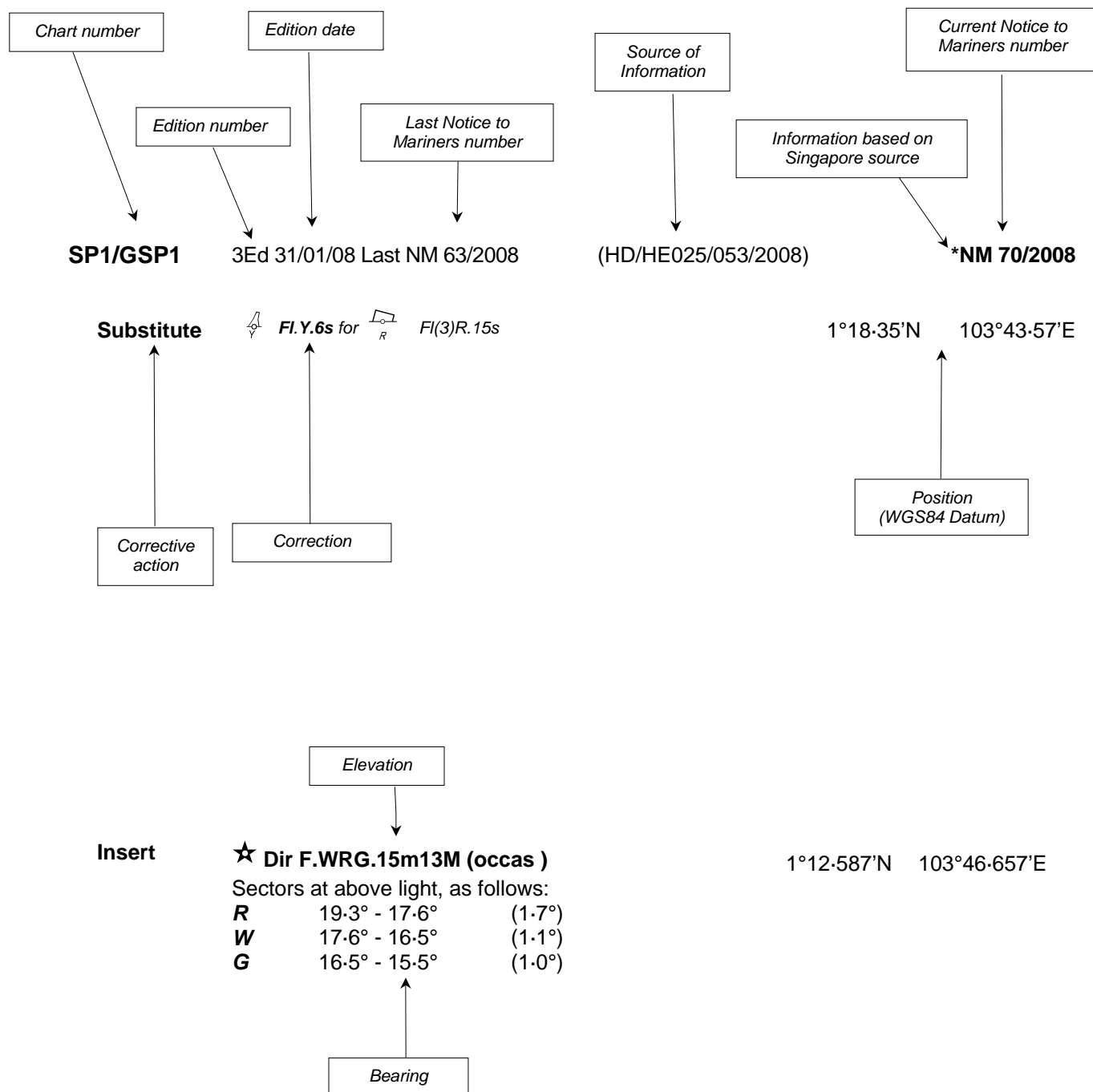
<http://www.mpa.gov.sg/infocentre/publications/noticesmari.htm>

This service is offered free of charge.

Hydrographic Department  
Maritime and Port Authority of Singapore  
460 Alexandra Road  
PSA Building #20-00  
Singapore 119963  
Tel: (65) 6375 1227  
Fax: (65) 6278 7646

## EXPLANATION OF FORMAT

The elements of a typical chart correction are explained below.



**Notes:**

- a) Notice to Mariners number followed by:
  - T** indicates a Temporary Notice (eg. **\*NM 80T/2008**).
  - P** indicates a Preliminary Notice (eg. **\*NM 80P/2008**).
- b) Bearings are referred to True Compass in degrees clockwise from 000° to 359°. Bearings related to lights are from seaward.
- c) Heights and elevations are above Mean High Water Springs.

I  
INDEX OF CHARTS AND PUBLICATIONS

DESCRIPTIONS	NOTICES NO	PAGE NO
Index of Singaporean Charts	-	191
Index of Dual Badged Charts	-	192
Index of Singapore Electronic Navigational Charts (ENC)	-	193
New Publication "SINGAPORE TIDE TABLES YEAR 2009"	-	194
New Edition Singaporean Charts	-	195
Singaporean Chart GSP1/SP1	*121, *122, *123, 124	196
Singaporean Chart 200	125, 126	196
Singaporean Chart 202	*121, 127	196
Singaporean Chart 501	*121	196
Singaporean Chart 502	124, 127	197
Port Marine Notices	*128	199
Laying of operation (Asia America Gateway) Submarine cable - Singapore (Changi Ferry Terminal) to Singapore Strait Eastwards	*129	199
Singaporean Print on Demand (POD) Charts	*130	200

\* Denotes information are based on Singapore source.

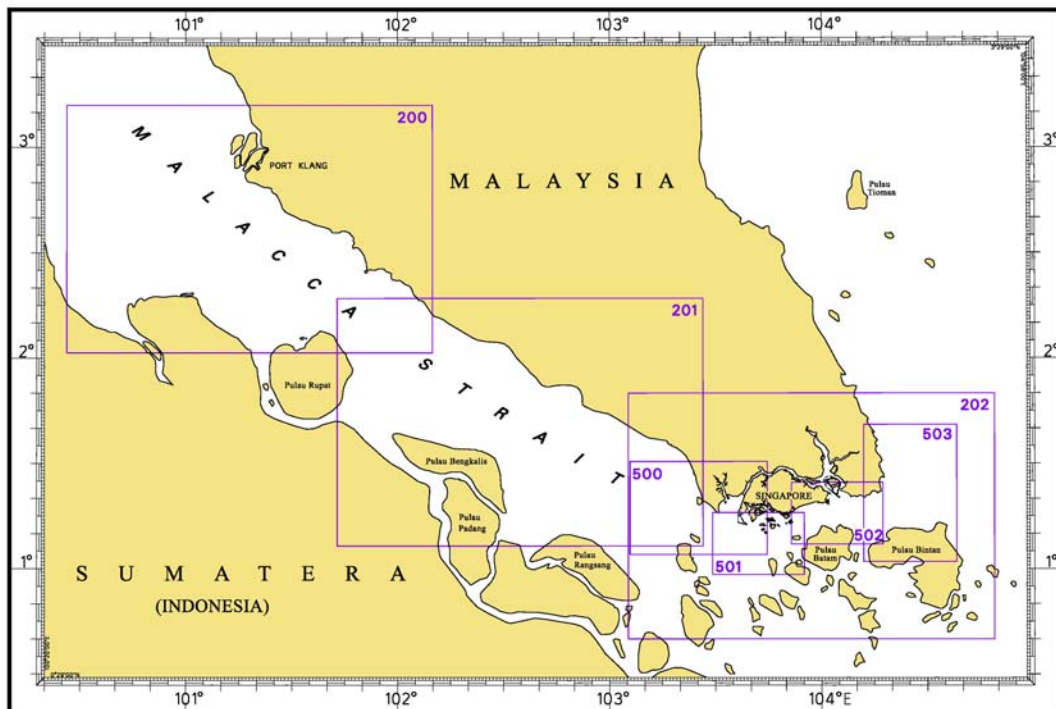
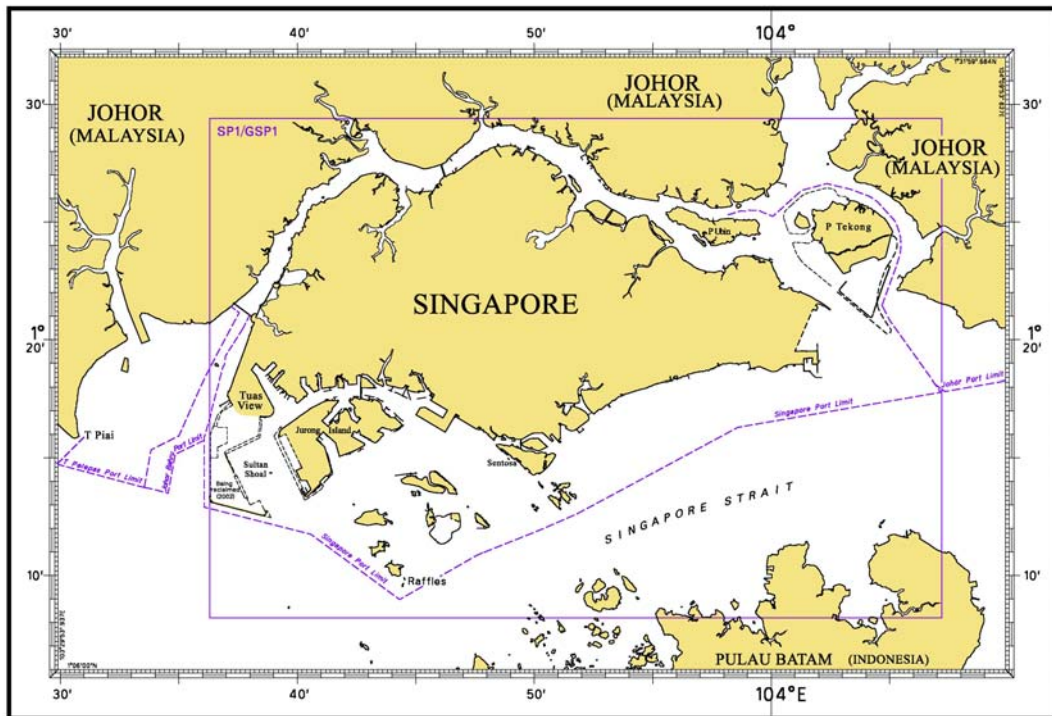
## INDEX OF CHARTS AND PUBLICATIONS

NOTICES NO	DESCRIPTION	PAGE NO	NOTICES NO	DESCRIPTION	PAGE NO
	Index of Singaporean Charts	191			
	Index of Dual Badged Charts	192			
	Index of Singapore Electronic Navigational Charts (ENC)	193			
	New Publication "SINGAPORE TIDE TABLES 2009"	194			
	New Edition Singaporean Charts	195			
*121	SP1/GSP1	196			
	202	196			
	501	196			
*122	SP1/GSP1	196			
*123	SP1/GSP1	196			
124	SP1/GSP1	196			
	502	197			
125	200	196			
126	200	196			
127	202	196			
	502	197			
*128	Port Marine Notices	199			
*129	Laying of operation (Asia America Gateway) Submarine Cable - Singapore Changi Ferry Terminal to Singapore Strait Eastwards	199			
*130	Singaporean Print on Demand (POD) Charts	200			

\* Denotes information are based on Singapore source.

# I INDEX OF CHARTS AND PUBLICATIONS

## INDEX OF SINGAPOREAN CHARTS

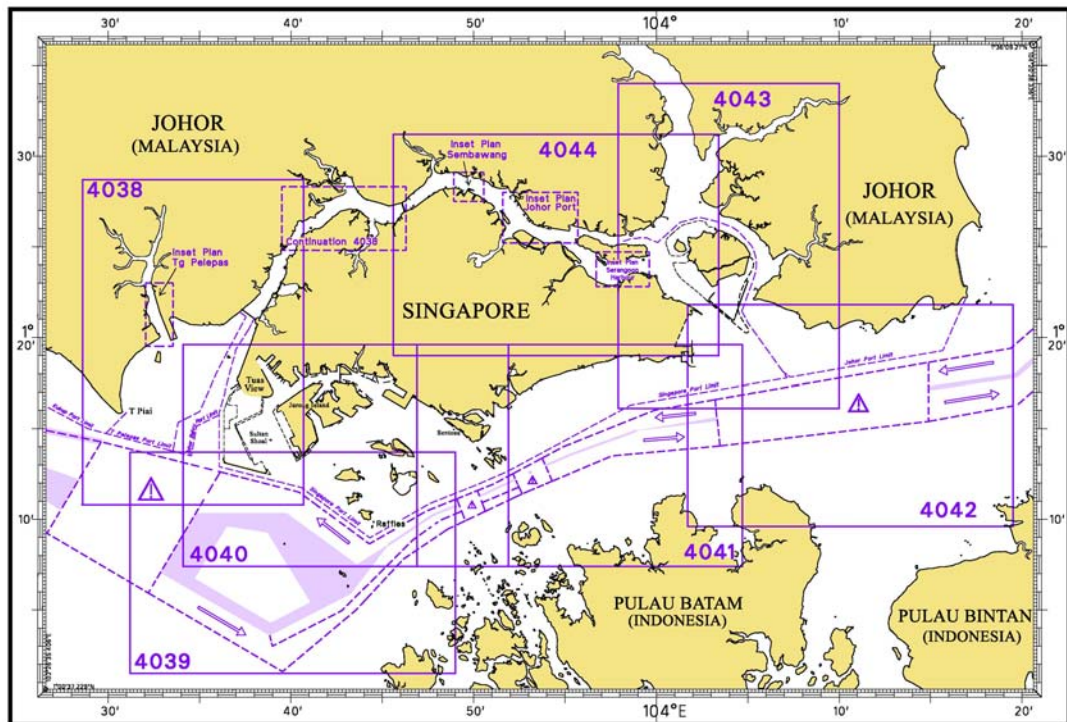
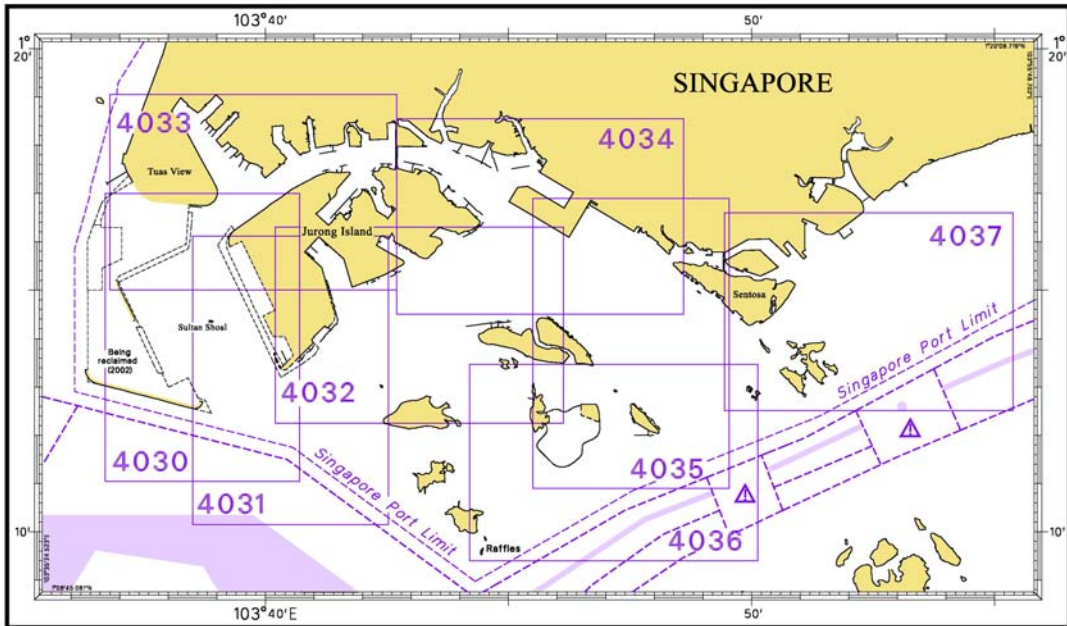


**Notes:**

Updated SINGAPOREAN Charts (excluding Charts SP1/GSP1 and 503) are available through our Print On Demand (POD)(Chart Service). For more information, refer to Section III – Navigational Information and these charts can be purchased from our authorised Chart Agents:

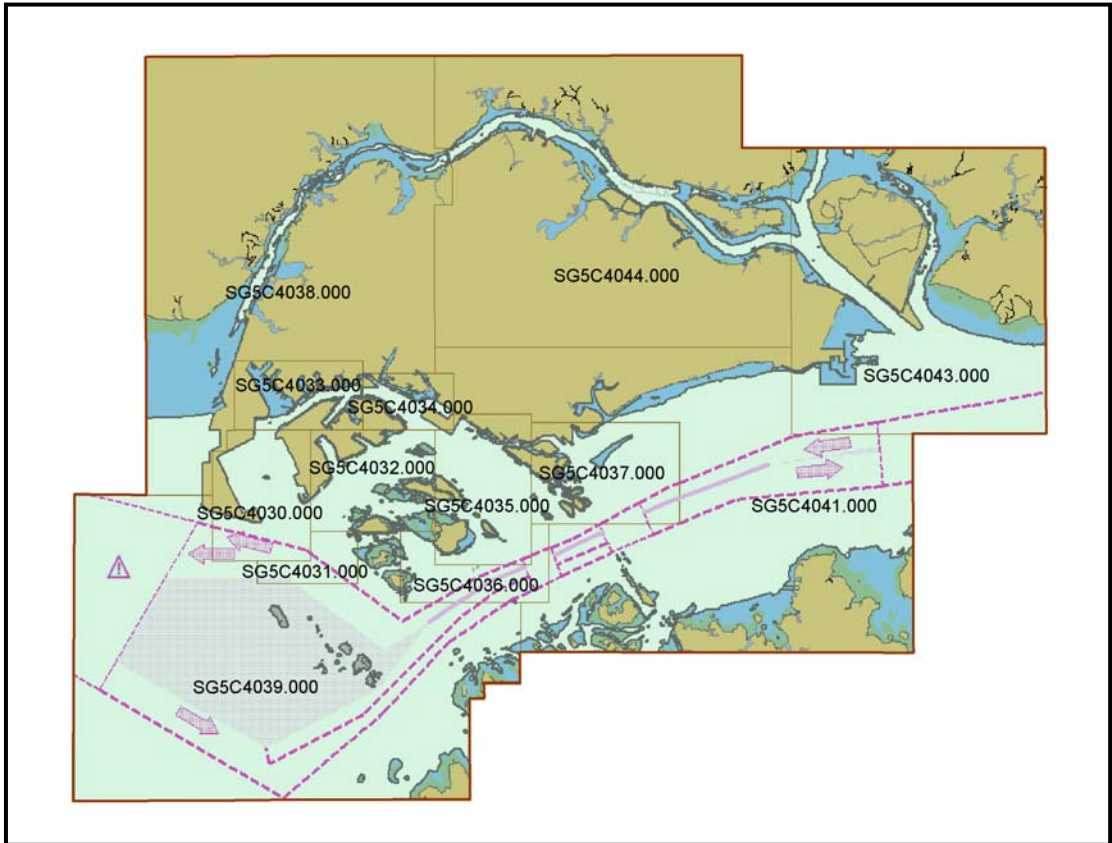
DPM (Singapore) Pte Ltd, E.W. Liner Charts & Publications Pte Ltd and Motion Smith.

# I INDEX OF CHARTS AND PUBLICATIONS



I  
**INDEX OF CHARTS AND PUBLICATIONS**

INDEX OF SINGAPORE ELECTRONIC NAVIGATIONAL CHARTS (ENC)



## II NEW PUBLICATIONS



### **SINGAPORE TIDE TABLES YEAR 2009 PUBLISHED IN SEPTEMBER 2008**

#### **Summary of Publication**

- (a) This 239 page book contains the following information:  
The predictions consist of 5 main segments to facilitate easy reference:
- High and Low Water Predictions
  - Hourly Tidal Height Predictions
  - Hourly Tidal Stream Predictions
  - Maximum and Slack Tidal Stream Predictions
  - Malacca Strait – High and Low Water Predictions
- The predictions cover stations in Singapore and selected stations along the Malacca Strait.
- (b) As in earlier publications, the presentation of the predictions is enhanced with colour codes so as to differentiate the various states of tidal heights, eg falling or rising tide and tidal stream directions. Moon phases, eg full and new moon, are also included in each calendar month to complement the prediction values.
- (c) The Tidal Heights are given in metres above Chart Datum (CD). The CD is the datum of soundings shown on the Singaporean Charts and Dual Badged Charts covering the area. A table showing the various tidal levels eg. Mean High Water Springs, Mean Low Water Springs etc, at various stations with reference to CD is also included in this publication.

#### **To Whom Will It Be Useful?**

Mariners, shipping community, port users and other interested users.

#### **Frequency/Year of Publication**

Annually.

#### **Cost of Publication**

To be advised by Chart Agents.

#### **Order Enquires:**

This publication is available from the following Chart Agents:

- 1) DPM (Singapore) Pte Ltd
  - 2) E.W. Liner Charts & Publications Pte Ltd
  - 3) Motion Smith
- (Please refer to Page 208 for details.)
-

## II NEW PUBLICATIONS

### NEW EDITION SINGAPOREAN CHARTS PUBLISHED ON 25 SEPTEMBER 2008

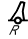
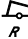
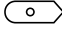






<b>Chart No.</b>	:	502
<b>Title</b>	:	Singapore Strait - Eastern Part
<b>Coverage</b>	:	Lat 1° 07.00'N 1° 24.61' N Long 103° 51.43'E 104° 17.31'E
<b>Scale</b>	:	1: 50 000 (WGS84 Datum)
<b>Date Published</b>	:	25 September 2008
<b>Size of chart</b>	:	960.0 x 649.2 mm
<b>Remarks</b>	:	This new edition includes new submarine cables and updated surveys covering : <ul style="list-style-type: none"> <li>• Eastern Anchorage</li> <li>• Eastern Bunkering Anchorages</li> <li>• Eastern Special Purposes D Anchorage</li> <li>• Changi General Purposes &amp; Man-of-War Anchorage</li> <li>• Eastern Fairway</li> <li>• East Keppel Fairway</li> <li>• Area South of Pulau Tekong</li> <li>• Cable Corridor Area</li> </ul>

This new edition supersedes the earlier edition published on 25 October 2005.

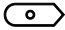




<b>Chart No.</b>	:	503
<b>Title</b>	:	Eastern Approaches And Entrance To Singapore Strait
<b>Coverage</b>	:	Lat 1° 02.00'N 1° 41.06' N Long 104° 11.89'E 104° 38.17'E
<b>Scale</b>	:	1: 75 000 (WGS84 Datum)
<b>Date Published</b>	:	25 September 2008
<b>Size of chart</b>	:	649.9 x 960.0 mm
<b>Remarks</b>	:	This new edition includes new submarine cables.

This new edition supersedes the earlier edition published on 15 September 2004.

## II NOTICES TO MARINERS AND CHART CORRECTIONS

<b>SP1/GSP1</b>	3Ed 31/01/08 Last 108/2008	(HD/HE025/106/2008)	<b>*NM 121/2008</b>
<b>Insert</b>	Legend '(collapsed)'		1°11-12'N 103°47-65'E
		(HD/HE025/113/2008)	<b>*NM 122/2008</b>
<b>Relocate</b>	 <b>Fl.R.2,5s Senoko A</b> from position		1°28-54'N 103°48-54'E
	to		1°28-57'N 103°48-50'E
		(HD/HE025/114/2008)	<b>*NM 123/2008</b>
<b>Relocate</b>	 <b>Fl.R.5s Denman Shoal</b> from position		1°28-50'N 103°48-31'E
	to		1°28-55'N 103°48-46'E
		(Admiralty Notices 34/4617/2008)	<b>NM 124/2008</b>
<b>Substitute</b>	 for #		1°10-65'N 103°56-60'E
<hr/>			
<b>200</b>	2Ed 30/11/05 Last 109/2008	(Admiralty Notices 31/4221/2008)	<b>NM 125/2008</b>
<b>Insert</b>	 <b>Fl.3s10m11M</b>		2°34-14'N 101°43-90'E
		(Admiralty Notices 34/4579/2008)	<b>NM 126/2008</b>
<b>Substitute</b>	++ <b>PA</b> for  <b>PA</b>		2°10-00'N 101°39-70'E
<hr/>			
<b>202</b>	5Ed 19/10/06 Last 112/2008	(HD/HE025/106/2008)	<b>*NM 121/2008</b>
<b>Insert</b>	Legend '(collapsed)'		1°11-08'N 103°47-64'E
		(Admiralty Notices 31/4091/2008)	<b>NM 127/2008</b>
<b>Insert</b>			1°08-74'N 104°11-91'E
<b>Delete</b>	 <b>Fl(2)R</b>		1°07-57'N 104°10-50'E
	 <b>Fl(2)G</b>		1°07-68'N 104°10-37'E
<b>Substitute</b>	 for ++		1°07-47'N 104°12-16'E
<hr/>			
<b>501</b>	4Ed 21/09/06 Last 114/2008	(HD/HE025/106/2008)	<b>*NM 121/2008</b>
<b>Insert</b>	Legend '(collapsed)'		1°11-12'N 103°47-65'E

**II**  
**NOTICES TO MARINERS AND CHART CORRECTIONS**

<b>502</b>	3Ed 25/10/05 Last 99/2008	(Admiralty Notices 34/4617/2008)	<b>NM 124/2008</b>
<b>Insert</b>			1°10-65'N 103°56-60'E
		(Admiralty Notices 31/4091/2008)	<b>NM 127/2008</b>
<b>Insert</b>			1°08-74'N 104°11-91'E
<b>Delete</b>	 <i>Fl(2)R.5s</i>		1°07-58'N 104°10-48'E
	 <i>Fl(2)G.5s</i>		1°07-69'N 104°10-36'E
<b>Substitute</b>	 for ++		1°07-47'N 104°12-27'E

---

**II**  
**TEMPORARY AND PRELIMINARY NOTICES**

Nil

### III NAVIGATIONAL INFORMATION

#### \*(NM 128/2008) PORT MARINE NOTICES

The following PMNs have been shortlisted, as they would be of particular interest to mariners.

These notices can be accessed directly from MPA website:

[http://www.mpa.gov.sg/circulars\\_and\\_notices/portmarine\\_notices/pm\\_notices.htm](http://www.mpa.gov.sg/circulars_and_notices/portmarine_notices/pm_notices.htm)

PMN No.	Subject
134/2008	Reclamation at Pasir Panjang Terminal and Pasir Panjang Wharves.
140/2008	Sand Mining at Area 1 and Dumping at (i) Jurong Island LNG Project (ii) Pasir Panjang Terminal Project Working Areas.
144/2008	A) Maintenance dredging works at Tanjong Pagar, Keppel and Brani Terminals. B) Upgrading of Berth K12 at Keppel Terminal. C) Demolition of existing concrete ramp at Berth T03 Tanjong Pagar Terminal.
149/2008	Reinstatement works for staging ground at Marina East.

#### \*(NM 129/2008) LAYING OF OPERATION (ASIA AMERICA GATEWAY) SUBMARINE CABLE – SINGAPORE (CHANGI FERRY TERMINAL) TO SINGAPORE STRAIT EASTWARDS

**Date :** This is an extension of Singapore Notice to Mariner No. 8/117/2008.  
The working period is extended from 1 May 08 to 31 December 08.

- Cable laying and associated operations are in progress between the following positions (in WGS84) :

1°22-321'N	104°00-356'E
1°22-280'N	104°00-688'E
1°22-328'N	104°00-758'E
1°22-313'N	104°01-672'E
1°21-435'N	104°02-705'E
1°18-874'N	104°05-717'E
1°17-570'N	104°06-601'E
1°17-041'N	104°07-424'E
1°17-232'N	104°09-523'E
1°18-665'N	104°14-879'E
1°18-840'N	104°15-000'E
1°19-347'N	104°17-771'E
1°19-411'N	104°18-742'E
1°22-061'N	104°22-479'E
1°21-968'N	104°23-236'E
1°22-790'N	104°24-246'E
1°24-737'N	104°26-744'E
1°26-615'N	104°29-053'E
1°29-656'N	104°31-762'E
1°31-656'N	104°33-064'E
1°34-125'N	104°33-356'E
1°49-995'N	104°37-614'E

### III NAVIGATIONAL INFORMATION

2. Charts affected : GSP1, SP1, 202, 502 and 503
3. Mariners are advised
  - (a) to navigate with caution
  - (b) not to anchor or trawl in the vicinity of the cable route.

Source : HD/DB67/018/2008

---

#### \*(NM 130/2008) SINGAPOREAN PRINT ON DEMAND (POD) CHARTS

**Print On Demand (POD)** Charts are the most up-to-date paper nautical charts printed for navigational use. These nautical charts are produced in accordance with the International Hydrographic Organisation (IHO) charting specifications. These official nautical charts are continually updated to the latest Notices to Mariners before they are printed and sold to users.

These POD Charts include 200, 201, 202, 500, 501, 502.

#### BENEFITS TO OUR CUSTOMERS

##### **Convenience**

Customers need not make numerous hand corrections to the nautical charts before use. In addition the updated POD Charts are more accurate and reliable than offset printed charts with hand corrections.

##### **Clarity**

Clarity in the presentation of updated information as compared to lithographic printed charts, where in some cases there are several overlapping corrections over existing information.

##### **Coverage**

The POD Charts cover the Malacca and Singapore Straits, from One Fathom Bank to Horsburgh Lighthouse.

---

**III  
AMENDMENTS TO PUBLICATIONS**

Nil

**IV**  
**REPRINT OF RADIO NAVIGATIONAL WARNINGS**

Nil

V  
**REPRINT OF ADMIRALTY NOTICES TO MARINERS  
 FOR DUAL BADGED CHARTS**

These notices can be accessed directly from UKHO Website:

<http://www.ukho.gov.uk/amd/weeklyNms.asp>

**4247\* SINGAPORE – Jurong Island – Sinki Fairway – Universal Terminals – Depths.**

Source: Maritime and Port Authority of Singapore

**Chart 4031** [ *previous update New Edition 22/05/2008* ] WGS84 DATUM

Insert the accompanying block, showing amendments to depths, centred on: 1° 13'.95N., 103° 41'.53E.

**Chart 4032** [ *previous update 4086/08* ] WGS84 DATUM

Insert the accompanying block, showing amendments to depths, centred on: 1° 13'.81N., 103° 41'.54E.


**4334\* SINGAPORE – Tuas View Southwards – Buoyage.**

Source: Maritime and Port Authority of Singapore

Note : This update has been included in a New Edition of Chart 4040 published 24 July 2008

**Chart 4038** [ *previous update 1182/08* ] WGS84 DATUM

Delete  *Fl.G.2s* PKHDB-19 1° 13'.91N., 103° 36'.29E.

 *Fl.G.2s* PKHDB-20 1° 14'.19N., 103° 36'.29E.

**4335\* SINGAPORE – Johor Strait – Western part – Town Reach – Horseshoe Reef North-eastwards – Depths.**

Source: Maritime and Port Authority of Singapore

**Chart 4038 (Panel A, Town Reach)** [ *previous update 4334/08* ] WGS84 DATUM

Insert depth  $3_7$  enclosed by 5m contour 1° 26'.96N., 103° 42'.44E.

depth  $5_4$  (a) 1° 26'.89N., 103° 42'.38E.

depth  $3_1$  (b) 1° 26'.80N., 103° 42'.38E.

depth  $7$  1° 26'.86N., 103° 42'.28E.

Delete depth  $6_2$ , adjacent to : (a) above

depth  $3_8$ , close SW of : (b) above

depth  $11_4$  and associated 10m contour 1° 26'.85N., 103° 42'.23E.

**4336\* SINGAPORE – Keppel Harbour – Brani Terminal – Berths B1, B2, B4, B5, B7 and B9 – Keppel Terminal - Berths K21, K22 and K23 – Dredged depths.**

Source: Maritime and Port Authority of Singapore

**Chart 4037** [ *previous update 3664/08* ] WGS84 DATUM

Amend Dredged depth to, 11.2m(2007), centred on: 1° 15'.663N., 103° 49'.534E.

Dredged depth to, 10.7m(2007), centred on: 1° 15'.724N., 103° 49'.641E.

Dredged depth to, 13.1m(2007), centred on: 1° 15'.831N., 103° 49'.905E.

**V**  
**REPRINT OF ADMIRALTY NOTICES TO MARINERS**  
**FOR DUAL BADGED CHARTS**

Dredged depth to, <i>12.7m(2007)</i> , centred on:	1° 15'.838N., 103° 50'.080E.
Dredged depth to, <i>14.5m(2007)</i> , centred on:	1° 15'.663N., 103° 50'.363E.
Dredged depth to, <i>12.1m(2007)</i> , centred on:	1° 15'.431N., 103° 50'.499E.
Dredged depth to, <i>9.6m(2007)</i> , centred on:	1° 15'.901N., 103° 49'.690E.
Dredged depth to, <i>9.7m(2007)</i> , centred on:	1° 15'.846N., 103° 49'.593E.
Dredged depth to, <i>9.9m(2008)</i> , centred on:	1° 15'.799N., 103° 49'.513E.

**4391 INDONESIA – Sumatera – Pulau Batam – Teluk Jodoh – Batuampar – Buoy.**

Source: Indonesian Notice 25/210/08

**Chart 4041** [ *previous update New Edition 24/07/2008* ] WGS84 DATUM

Delete



F.I.R No.4

1° 10'.06N., 103° 59'.73E.

**4617 SINGAPORE STRAIT – Main Strait South – eastwards – Pulau Sambu North – eastwards – Moored storage tanker. Foul.**

Source: Indonesian Chart 44 &amp; JANHIDROS

**Chart 4041** [ *previous update 4391/08* ] WGS84 DATUM

Substitute



Kapal Timbun Stasioner Platinum for #

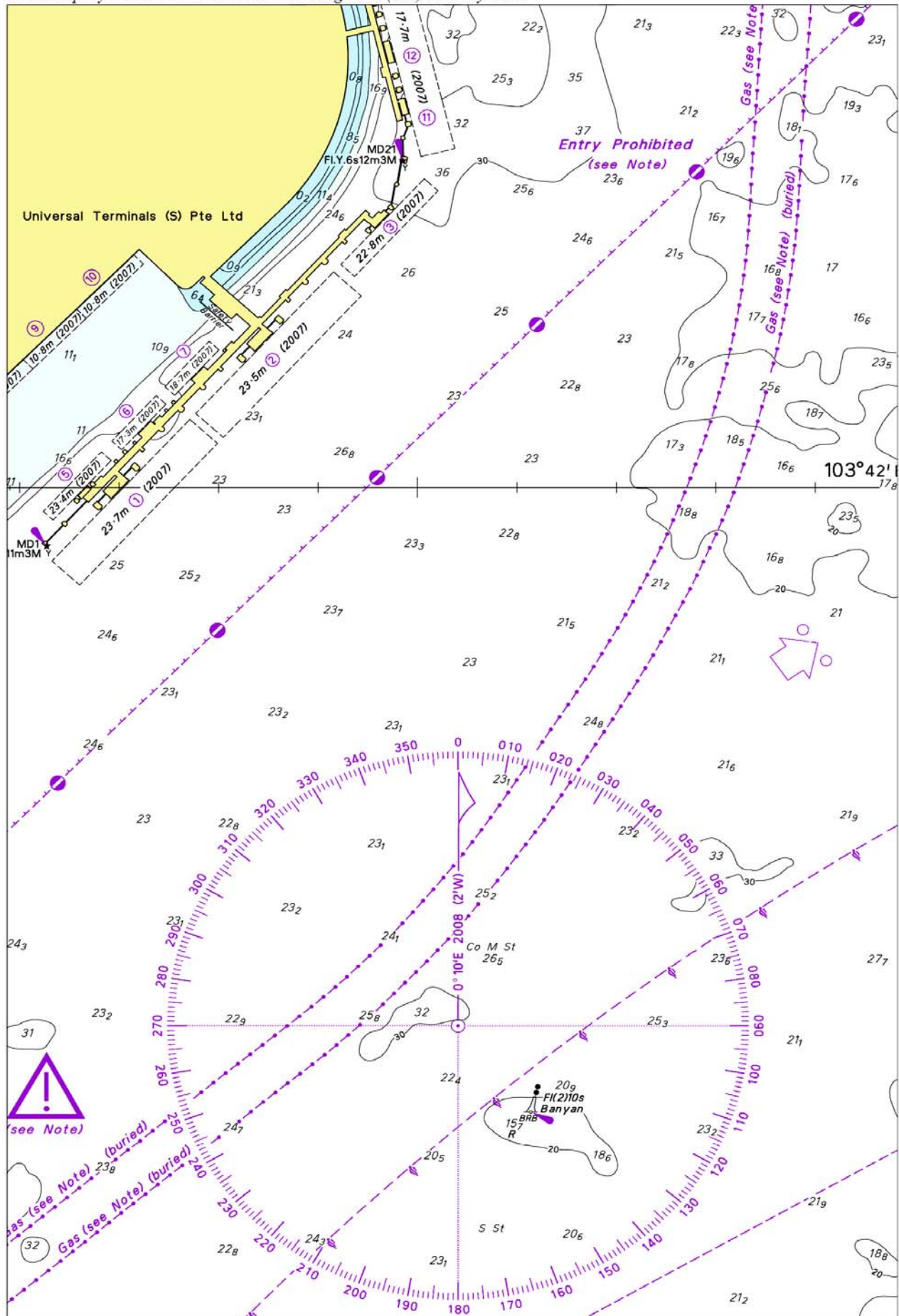
1° 10'.65N., 103° 56'.60E.

Updated to Admiralty Notices to Mariners Edition No. 35 of 2008 dated 28 August 2008.



V  
REPRINT OF ADMIRALTY NOTICES TO MARINERS  
FOR DUAL BADGED CHARTS

To accompany Notice to Mariners 4247/08. Image Size (mm) 260.3 by 166.1



Block for Chart No 4032

**SINGAPORE ELECTRONIC NAVIGATIONAL CHARTS (ENC) DISTRIBUTORS**  
Please approach any of the appointed distributors to purchase the Singapore ENC.

<b>CONTACT PERSON/ DESIGNATION</b>	<b>ADDRESS</b>	<b>TELEPHONE/FAX NO./EMAIL/WEBSITE</b>
Mr Chong Chee Meng General Manager	DPM (Singapore) Pte Ltd 1 Maritime Square, #09-72 Harbour Front Centre, Singapore 099253	Tel. No.: +65 6270 4060 Fax No.: +65 6276 3858 Email: <a href="mailto:sales@dpmsingapore.com.sg">sales@dpmsingapore.com.sg</a> Website: <a href="http://www.dpmsingapore.com.sg">http://www.dpmsingapore.com.sg</a>
Mr Hamzah Akhbar MDS Branch Manager	Kelvin Hughes(S) Pte Ltd 8 Pandan Avenue #02-00, Singapore 609384	Tel. No.: +65 6545 9880 ext.24 Fax No.: +65 6545 8892 Email: <a href="mailto:hamzah.akhbar@khsing.com">hamzah.akhbar@khsing.com</a> Website: <a href="http://www.kelvinhughes.co.uk">http://www.kelvinhughes.co.uk</a>
Mr Looi Keen Wai Regional Sales Manager	Maritime Information Systems (MARIS) 52, Telok Blangah Road #01-06, Telok Blangah Centre, Singapore 058809	Tel. No.: +65 6276 1472 Fax No.: +65 6276 1473 Email: <a href="mailto:support@maris.sg">support@maris.sg</a> Website: <a href="http://www.maris.no">http://www.maris.no</a>
Ms Kathrine Bjaroy Marketing Coordinator	Maritime Information System AS (MARIS) Danholmen 25, 3128 Notteroy, Norway	Tel. No.: +47 33 30 42 50 Fax No.: +47 33 30 42 51 Email: <a href="mailto:roar.moe@maris.no">roar.moe@maris.no</a> Website: <a href="http://www.maris.no">http://www.maris.no</a>
Mr Bernard Wong Sales Manager	Motion Smith 15 Jalan Kilang Barat #08-01/05 Frontech Centre Singapore 159357	Tel. No.: +65 6220 5098 Fax No.: +65 6225 4902 Email: <a href="mailto:sales@motsmith.com">sales@motsmith.com</a> Website: <a href="http://www.motsmith.com">http://www.motsmith.com</a>
Mr Dominic Oliver	Transas Marine Pacific Pte Ltd 750C Chai Chee Road, #04-07, Technopark@Chai Chee, Singapore 469003	Tel. No.: +65 6443 3061 Fax No.: +65 6443 3025 Email: <a href="mailto:dominic@transas.com.sg">dominic@transas.com.sg</a> Website: <a href="http://www.transas.com.sg">http://www.transas.com.sg</a>
Mr Choy Kum Weng Director	Vector Services Pte Ltd 15 West Coast Highway, #02-14A Pasir Panjang Building Singapore 117861	Tel. No.: +65 6777 3602 Fax No.: +65 6777 9203 Email: <a href="mailto:kwchoy@pacific.net.sg">kwchoy@pacific.net.sg</a>
Mr George Arts President	Marine Press of Canada 640 Rue St-Paul Ouest, Suite 300 Montreal (QC) Canada, H3C1L9	Tel. No.: (514) 866-8342 Fax No.: (514) 866-9050 Email : <a href="mailto:sales@marinepress.com">sales@marinepress.com</a> Website: <a href="http://www.marinepress.com">http://www.marinepress.com</a>
Mr Thomas Wilde Superintendent	HanseNautic GmbH Bade & Hornig, Eckardt & Messtorff Herrengaben 31 D-20459 Hamburg, Germany	Tel. No.: +49 40 374 811-32 Fax No.: +49 40 366 400 Email: <a href="mailto:wilde@hansenautic.de">wilde@hansenautic.de</a> Website : <a href="http://www.HanseNautic.com">http://www.HanseNautic.com</a>
Ms Verena Borsos Manager	SevenCs AG + Co. KG Ruhrstrasse 90, D-22761 Hamburg, Germany	Tel. No.: +49 40 853 58 6940 Fax No.: +49 40 853 58 6949 Email: <a href="mailto:sales@chartworld.com">sales@chartworld.com</a> Website : <a href="http://www.sevencs.com">http://www.sevencs.com</a>
Mr Keiji Shimizu General Manager	Japan Hydrographic Association Electronic Charts Division Daiichi Sogo Bldg, 6F 1-6-6, Hanedakuko, Ota-ku, Tokyo 144-0041, Japan	Tel. No.: +81 3 5708 7093 Fax No.: +81 3 5708 7094 Email: <a href="mailto:enc-support@jha.jp">enc-support@jha.jp</a> Website: <a href="http://www.jha.jp">http://www.jha.jp</a>

**SINGAPORE ELECTRONIC NAVIGATIONAL CHARTS (ENC) DISTRIBUTORS**  
Please approach any of the appointed distributors to purchase the Singapore ENC.

<b>CONTACT PERSON/ DESIGNATION</b>	<b>ADDRESS</b>	<b>TELEPHONE/FAX NO./EMAIL/WEBSITE</b>
Mr Jester-Kim Foreign Business Department Manager	E_MLX Co. Ltd Ssangyong Research No.2 Lab Sinseong-Dong 100 Yusong-Gu, Daejoen 305-804, Korea (ROK)	Tel. No.: +82 42 865 1893 Fax No.: +82 42 865 1884 Email: <a href="mailto:Jester-kim@emlx.co.kr">Jester-kim@emlx.co.kr</a>
Mr C G Kim Managing Director	Korean Ocean Development Co. Ltd 2ND Fl, Dongbang Bldg, 25-4, 4 Ga Jungang-Dong, Jung-Gu, Busan, South Korea	Tel. No.: +82 514 66 0760 Fax No.: +82 514 65 9345 Email: <a href="mailto:sales@chartkorea.com">sales@chartkorea.com</a> Website: <a href="http://www.chartkorea.com">http://www.chartkorea.com</a>
Mr Kjell Nodland	Jeppesen Norway A/S P.O Box 212 , N-4379 Egersund, Norway	Tel No.: +47 514 64 700 Fax No: +47 514 64 701 Email: <a href="mailto:enc@c-map.no">enc@c-map.no</a> Website : <a href="http://www.c-map.no">http://www.c-map.no</a>
Ms Eva Hegland Sales, order and distributor support.	PRIMAR STAVANGER Lervigsveien 36, P.O Box 60, N-4001 Stavanger, Norway	Tel. No.: +47 51 93 9500 Fax No.: +47 51 93 9501 Email: <a href="mailto:sales@primar.org">sales@primar.org</a> Website : <a href="http://www.primar-stavanger.org">http://www.primar-stavanger.org</a>
Mrs Christine Trickett Product Manager	United Kingdom Hydrographic Office Admiralty Way, Taunton, Somerset TA1 2DN United Kingdom	Tel. No.: +44 (0)1823 337900 Fax No.: +44 (0)1823 284077 Emails: <a href="mailto:vargroup@ukho.gov.uk">vargroup@ukho.gov.uk</a> & <a href="mailto:christine.trickett@ukho.gov.uk">christine.trickett@ukho.gov.uk</a> Website: <a href="http://www.ukho.gov.uk">http://www.ukho.gov.uk</a>

### Agents for the Maritime and Port Authority of Singapore Publications

**Agent's name** : **DPM (Singapore) Pte Ltd**  
**Address** : 1 Maritime Square #09-72, HarbourFront Centre,  
Singapore 099253  
**Telephone** : (65) 6270 4060  
**Fax No.** : (65) 6276 3858  
**E-mail** : [sales@dpmsingapore.com.sg](mailto:sales@dpmsingapore.com.sg)  
**Internet Web Site** : <http://www.dpmsingapore.com.sg>

**Agent's name** : **E.W. Liner Charts & Publications Pte Ltd**  
**Address** : 102F, Pasir Panjang Road, #08-01, Citilink Warehouse Complex,  
Singapore 118530  
**Telephone** : (65) 6323 0773  
**Fax No.** : (65) 6323 0775  
**E-mail** : [ewliner@singnet.com.sg](mailto:ewliner@singnet.com.sg)  
**Internet Web Site** : <http://www.ewliner.com>

**Agent's name** : **Motion Smith**  
**Address** : 15 Jalan Kilang Barat  
#08-01/05 Frontech Centre,  
Singapore 159357  
**Telephone** : (65) 6220 5098  
: (After office hours: 8163 9993)  
**Fax No.** : (65) 6225 4902  
**E-mail** : [sales@motsmith.com](mailto:sales@motsmith.com)  
**Internet Web Site** : <http://www.motsmith.com>

## HYDROGRAPHIC NOTE - Instructions

1. Mariners are requested to notify the Chief Hydrographer, Maritime and Port Authority of Singapore, when new or suspected dangers to navigation are discovered, changes are observed in aids to navigation or where corrections to nautical publications may be necessary. Reports, which cannot be confirmed or are lacking in certain details should not be withheld.
2. Any ambiguities of time, positioning and depth should be stressed and any firm expectation of being able to check the information provided on a following voyage should be mentioned.
3. Mariners using satellite position fixing systems, eg. GPS, should provide details of equipment and datum used (where applicable). Where bearings (true or magnetic) are taken visually or by radar to fix a position, it should include more than two objects in order to provide a check on its accuracy. A position may also be defined by bearing and distance from a conspicuous object eg. beacon, lighthouse etc.
4. The note should include a tracing or a digital image of the chart used and the details should be clearly marked.
5. Echo sounders frequently register greater depths than the advertised maximum depth for the equipment, eg. a trace appearing at 50 metres may be in fact be 550 metres or even 1050 metres for equipment whose maximum depth is 500 metres. Erroneous depths caused by 2nd transmission error can usually be recognised by the following:
  - (a) the tracing being weaker than normal for the depth registered,
  - (b) the trace appearing to pass through the transmission line,
  - (c) the feathery nature of the trace.
6. An acknowledgement of receipt will be sent. When a Notice to Mariners is issued, the sender's vessel or name is quoted as the source unless the same information is also received in foreign Notices to Mariners.
7. Reports of shoals, uncharted dangers and defects in aids to navigation may also be made to the appropriate Singapore Port Operations Control Station on VHF Channels 10, 12, 14, 68 or 73.

## HYDROGRAPHIC NOTE

To:

Chief Hydrographer  
Hydrographic Department  
Maritime and Port Authority of Singapore  
460 Alexandra Road PSA Building #20-00  
Singapore 119963

Tel : (65) 6375 1227  
Fax : (65) 6278 7646  
Email : [hydrographic@mpa.gov.sg](mailto:hydrographic@mpa.gov.sg)

**Sender's Contact Details** :

Date : .....

Name of Vessel : .....

Address of Sender : .....

Tel : ..... Fax : .....

Email : .....

**Nature of Observation** :

General Location : .....

Subject : .....

Position : Lat. .... Long. ....

Charts Used : .....

Date & Time of Observation : .....

Details : .....

.....

.....

Attachment : .....

**Equipment Used** :

Type of Position Fixing : ..... GPS / DGPS ..... Others : .....

Type of Echo Sounder : .....

Name and Signature : .....

Ship's/Company's stamp : .....