



SINGAPOREAN NOTICES TO MARINERS

SECTION	CONTENT	Page
I	Index of Charts & Publications	172
II	New Publications	175
	Notices to Mariners and Chart Corrections	177
	Temporary and Preliminary Notices	179
III	Navigational Information	180
	Amendments to Publications	182
IV	Reprint of Radio Navigational Warnings	183
V	Reprint of Admiralty Notices to Mariners for Dual Badged Charts	184

The monthly Notices to Mariners contain corrective information affecting charts published by the Hydrographic Department, Maritime and Port Authority of Singapore. The information contained in these Notices should be updated on the charts affected. Notices under Section II apply only to the particular Singaporean Chart(s) indicated.

Mariners are requested to notify the Chief Hydrographer, Maritime and Port Authority of Singapore, immediately on the discovery of new dangers or suspected dangers to navigation and of changes or defects in aids to navigation. See Hydrographic Note on back page.

The monthly Singaporean Notices to Mariners can be accessed directly from the MPA website:
[http://www.mpa.gov.sg/sites/port_and_shipping/circulars_and_notices/singapore_notices_to_mariners\(ntm\).page](http://www.mpa.gov.sg/sites/port_and_shipping/circulars_and_notices/singapore_notices_to_mariners(ntm).page)

This service is offered free of charge.

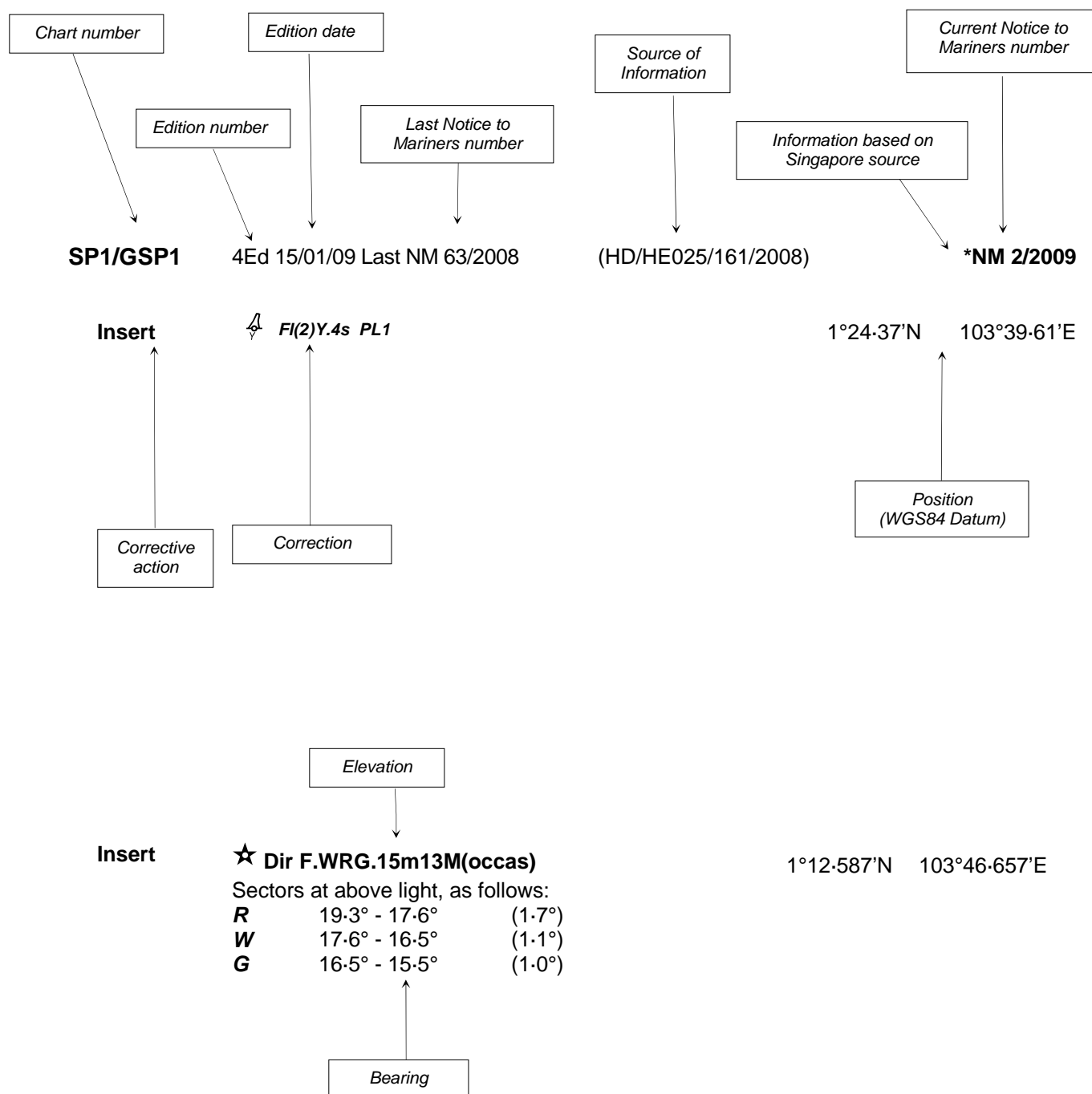
The Chief Hydrographer of
Maritime and Port Authority of Singapore
wishes all users of Singaporean and Dual Badged
Charts

“SELAMAT HARI RAYA AIDILFITRI”

Hydrographic Department
Maritime and Port Authority of Singapore
460 Alexandra Road
PSA Building #20-00
Singapore 119963
Tel: (65) 6375 1227
Fax: (65) 6278 7646

EXPLANATION OF FORMAT

The elements of a typical chart correction are explained below.



Notes:

- Notice to Mariners number followed by:
T indicates a Temporary Notice (eg. ***NM 1T/2009**).
P indicates a Preliminary Notice (eg. ***NM 1P/2009**).
- Bearings are true reckoned clockwise from 000° to 359° ; those relating to lights are from seaward.
- Heights and elevations are above Mean High Water Springs.

I
INDEX OF CHARTS AND PUBLICATIONS

DESCRIPTION	NOTICE NO.	PAGE NO.
Index of Singaporean Charts	-	172
Index of Dual Badged Charts	-	173
Index of Singapore Electronic Navigational Charts (ENC)	-	174
New Edition Singaporean Charts	-	175
New Edition Dual Badged Charts	-	176
Singaporean Chart SP1/GSP1	*85	177
Singaporean Chart 201	86, 89P	177, 179
Singaporean Chart 202	86, 87, 90P	177, 179
Singaporean Chart 500	86	177
Singaporean Chart 502	87, *88	177, 178
Singaporean Chart 503	87	178
Temporary and Preliminary Notices	89P, 90P	179
Port Marine Notices	*91	180
Cable Laying and Repair Operations for Submarine Cables - Singapore (Changi Ferry Terminal) to Singapore Strait Eastwards	*92	180
Singaporean Print On Demand (POD) Charts	*93	181
3 rd ECDIS Conference and Exhibition (IEC 2009)	*94	181
Updating of Publication "SINGAPORE PORT INFORMATION 2008/2009 EDITION"	*95	182
Reprint of Radio Navigational Warnings	-	183
Reprint of Admiralty Notices to Mariners for Dual Badged Charts	-	184
Singapore Electronic Navigational Charts (ENC) Distributors	-	188

* Denotes information are based on Singapore source.

I

INDEX OF CHARTS AND PUBLICATIONS

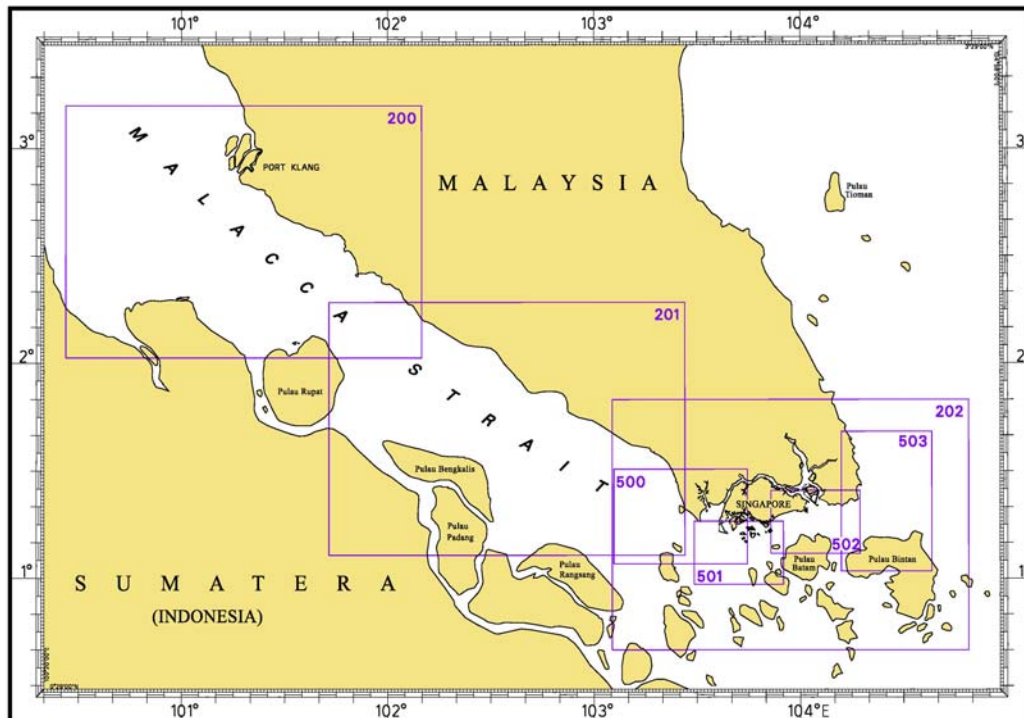
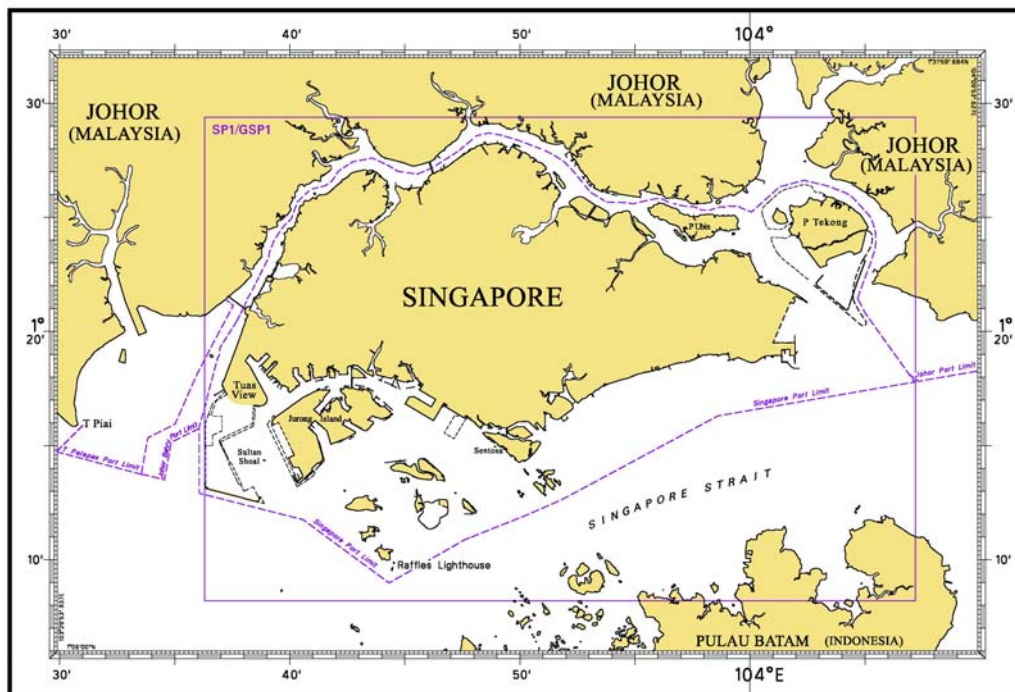
NOTICE NO.	DESCRIPTION	PAGE NO.	NOTICE NO.	DESCRIPTION	PAGE NO.
-	Index of Singaporean Charts	172	-	Reprint of Admiralty Notices to Mariners for Dual Badged Charts	184
-	Index of Dual Badged Charts	173	-	Singapore Electronic Navigational Charts (ENC) Distributors	188
-	Index of Singapore Electronic Navigational Charts (ENC)	174			
-	New Edition Singaporean Charts	175			
-	New Edition Dual Badged Charts	176			
*85	SP1/GSP1	177			
86	201, 202, 500	177			
87	202, 502, 503	177, 178			
*88	502	178			
89P	201	179			
90P	202	179			
*91	Port Marine Notices	180			
*92	Cable Laying and Repair Operations for Submarine Cables - Singapore (Changi Ferry Terminal) to Singapore Strait Eastwards	180			
*93	Singaporean Print On Demand (POD) Charts	181			
*94	3 rd International ECDIS Conference and Exhibition (IEC 2009)	181			
*95	Updating of Publication "SINGAPORE PORT INFORMATION 2008/2009 EDITION"	182			
-	Reprint of Radio Navigational Warnings	183			

* Denotes information are based on Singapore source.

I

INDEX OF CHARTS AND PUBLICATIONS

INDEX OF SINGAPOREAN CHARTS



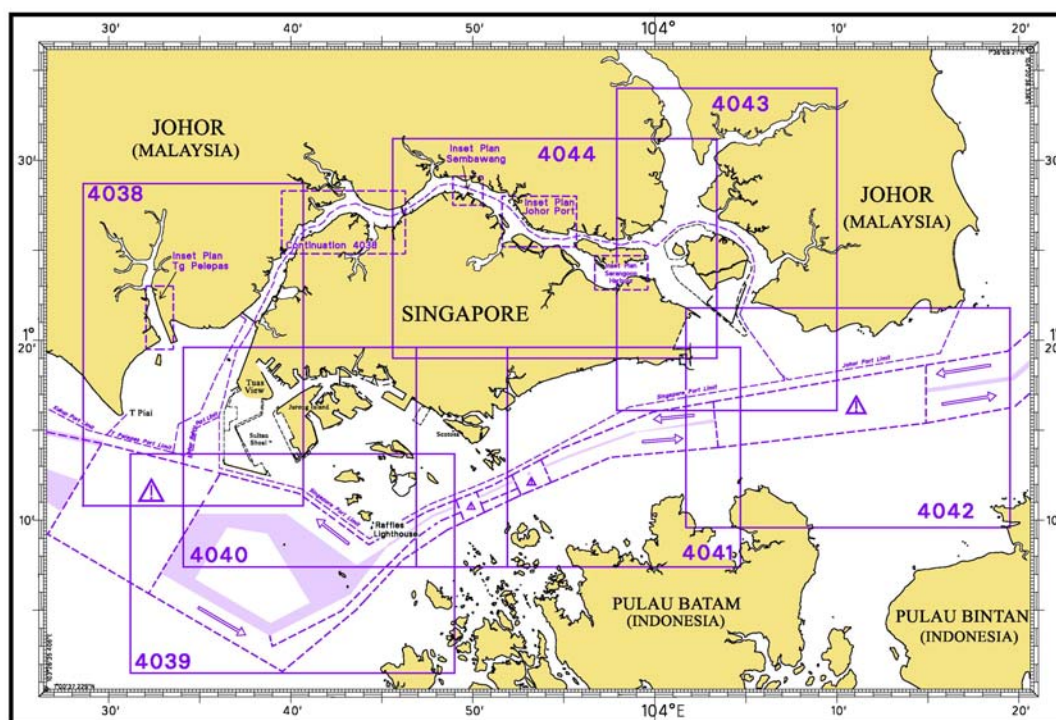
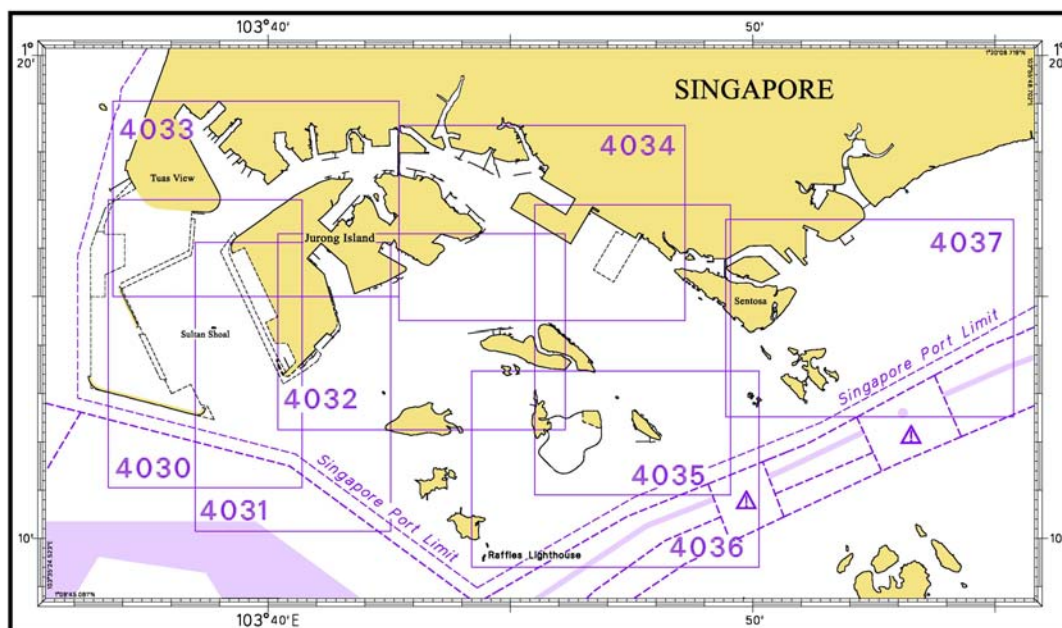
Notes:

Updated SINGAPOREAN Charts (excluding Charts SP1/GSP1) are available through our Print On Demand (POD) Chart Service. For more information, refer to Section III – Navigational Information and these charts can be purchased from our authorised Chart Agents:
DPM (Singapore) Pte Ltd, E.W. Liner Charts & Publications Pte Ltd and Motion Smith.

I

INDEX OF CHARTS AND PUBLICATIONS

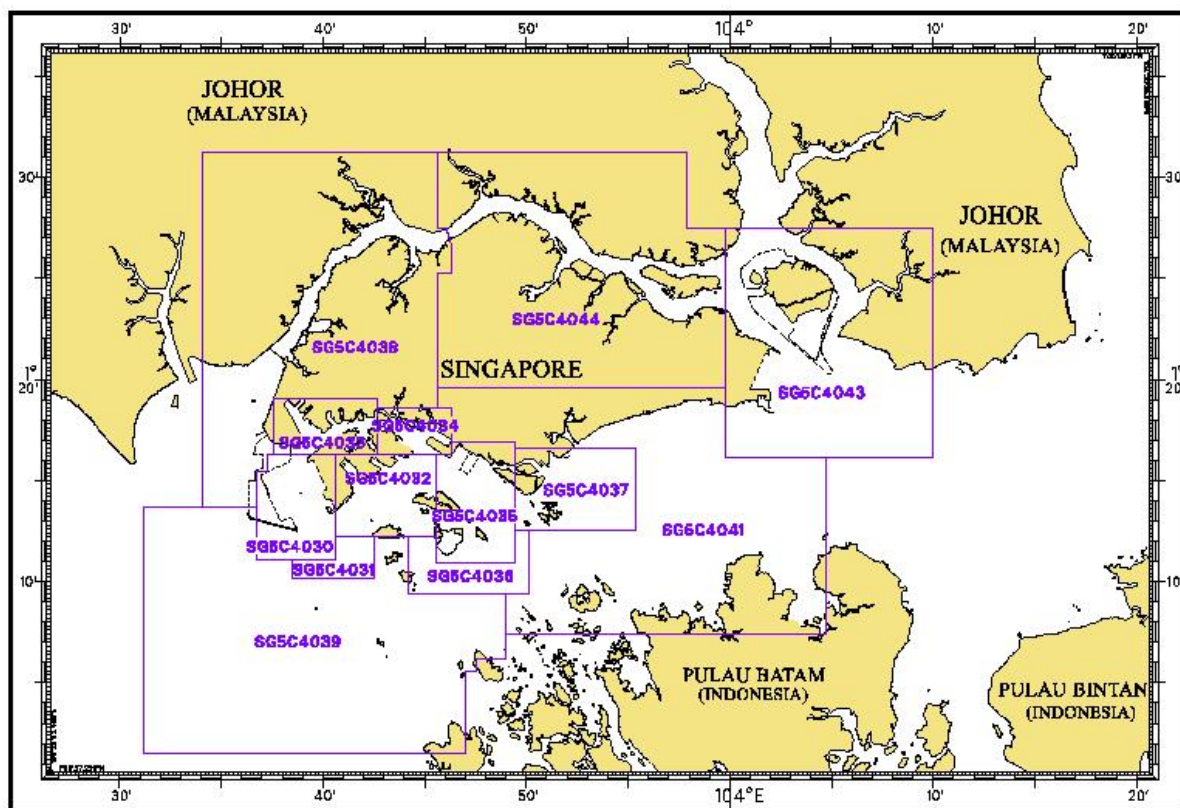
INDEX OF DUAL BADGED CHARTS



I

INDEX OF CHARTS AND PUBLICATIONS

INDEX OF SINGAPORE ELECTRONIC NAVIGATIONAL CHARTS (ENC)



II NEW PUBLICATIONS

NEW EDITION SINGAPOREAN CHARTS TO BE PUBLISHED ON 24TH SEPTEMBER 2009

Chart Number	:	202
Title	:	Singapore Strait
Coverage	:	Lat 0° 40.00' N 1° 49.99' N Long 103° 05.33' E 104° 48.89' E
Scale	:	1: 200 000
Date Published	:	24th September 2009
Size of Chart	:	960.0 x 644.7 mm
Remarks	:	This new edition includes: - <ul style="list-style-type: none"> • New submarine cables. • New coastline of Tuas View Extension, Jurong Island, Pulau Busing, Pulau Ular and Pulau Bukom Kechil • New reclamation profile for Pulau Tekong and Pasir Panjang. • Updated surveys covering Dual Badged Charts 4039, 4040, 4041 and 4043 published on 23rd July 2009.

This new edition supersedes the earlier edition published on 19th October 2006.

Chart Number	:	501
Title	:	Singapore Strait – Western Part
Coverage	:	Lat 0° 58.36'N 0° 16.00' N Long 103° 29.17'N 103° 55.05' N
Scale	:	1: 50 000
Date Published	:	24th September 2009
Size of Chart	:	960.0 x 649.9 mm
Remarks	:	This new edition includes: - <ul style="list-style-type: none"> • New submarine cables. • As laid positions of the Natuna pipelines and the 500metre corridor. • New coastline of Jurong Island, Pulau Busing, Pulau Ular and Pulau Bukom Kechil. • Updated surveys covering Dual Badged Charts 4039, 4040 and 4041 published on 23rd July 2009.

This new edition supersedes the earlier edition published on 21th September 2006.

II NEW PUBLICATIONS

NEW EDITION DUAL BADGED CHARTS TO BE PUBLISHED ON 8TH OCTOBER 2009



Chart Number	:	4034
Title	:	Port of Singapore – East Jurong Channel, Pasir Panjang Terminal and West Keppel Fairway
Coverage	:	Lat 01° 14-50'N 01° 18-55' N Long 103° 42-70'E 103° 48-60' E
Scale	:	1: 10 000
Date Published	:	8th October 2009
Size of Chart	:	1094.3 x 746.3 mm
Remarks	:	This new edition includes: - <ul style="list-style-type: none"> • Northern part of Damar Laut Basin • Entrance to Sungei Jurong • Pasir Panjang Terminal Berths P13 to P15 • Off Tanjong Penjuru • Approaches to Pasir Panjang Reclamation Area • Selat Sinki and Selat Pandan • Ayer Merbau Basin • West Keppel Fairway



This existing chart of the same number published on 19th February 2009 is superseded.



Chart Number	:	4035
Title	:	Port of Singapore – Western Anchorages, Jong Fairway and Cruise Bay
Coverage	:	Lat 01° 10-90'N 01° 16-90' N Long 103° 45-50'E 103° 49-54' E
Scale	:	1: 10 000
Date Published	:	8th October 2009
Size of Chart	:	749.4 x 1105.7 mm
Remarks	:	This new edition includes: - <ul style="list-style-type: none"> • Cruise Bay • Shell SBM Area • West Keppel Fairway • Southern Fairway • Approaches to Pasir Panjang Reclamation Area • Part of the Singapore Main Strait

This existing chart of the same number published on 19th February 2009 is superseded.



II NOTICES TO MARINERS AND CHART CORRECTIONS


SP1/GSP1	4Ed 15/01/09 Last NM 73/2009	(HD/HE025/86/2009)	*NM 85/2009	
Delete	 Fl.Y.6s Shimizu 1		1°25.66'N	103°53.59'E
		(HD/HE025/87/2009)		
Delete	 Fl.Y.6s Shimizu 2		1°25.22'N	103°53.90'E

201	3Ed 5/10/07 Last NM 76/2009	(Admiralty Notice 35/4582/2009)	NM 86/2009
Insert		1°15.72'N	103°19.84'E
Delete	 24h Wk	1°15.89'N	103°19.80'E

202	5Ed 19/10/06 Last NM 78/2009	(Admiralty Notice 35/4582/2009)	NM 86/2009
Insert		1°15.72'N	103°19.84'E
Delete	 24 Wk	1°15.89'N	103°19.80'E

		(Peninsular Malaysia Marine Dept. Notice 73/2008)	NM 87/2009
Insert	limit of anchoring prohibited TTTTX TTTT, joining :	1°18-41'N 1°19-40'N 1°19-89'N 1°20-58'N 1°19-97'N 1°19-26'N 1°18-85'N 1°18-41'N	104°13-46'E 104°19-39'E 104°19-92'E 104°19-32'E 104°15-99'E 104°15-68'E 104°13-32'E 104°13-46'E

500	5Ed 30/08/07 Last NM 73/2009	(Admiralty Notice 35/4582/2009)	NM 86/2009
Insert		1°15.72'N	103°19.84'E
Delete	 24 ₂ Wk	1°15.89'N	103°19.80'E



502	4Ed 25/09/08 Last NM 79/2009	(Peninsular Malaysia Marine Dept. Notice 73/2008)	NM 87/2009
Insert	limit of anchoring prohibited TTTT  TTTT , joining :	1°18-41'N 104°13-46'E 1°19-05'N 104°17-31'E (Chart border)	

II NOTICES TO MARINERS AND CHART CORRECTIONS

1°20.21'N 104°17.31'E
(Chart border)
1°19.97'N 104°15.99'E
1°19.26'N 104°15.68'E
1°18.85'N 104°13.32'E
1°18.41'N 104°13.46'E

(HD/HY/A00102304)

***NM 88/2009**

Substitute  *Wk* for  *Wk*

1°14.68'N 103°52.64'E

503

3Ed 25/09/08 Last NM 79/2008

(Peninsular Malaysia Marine Dept.
Notice 73/2008)**NM 87/2009****Insert**

limit of anchoring prohibited ~~TTTT~~  ~~TTTT~~, joining :

1°18.41'N 104°13.46'E
1°19.40'N 104°19.39'E
1°19.89'N 104°19.92'E
1°20.58'N 104°19.32'E
1°19.97'N 104°15.99'E
1°19.26'N 104°15.68'E
1°18.85'N 104°13.32'E
1°18.41'N 104°13.46'E

II TEMPORARY AND PRELIMINARY NOTICES

201 3Ed 5/10/07 Last NM 76/2009 (Admiralty Notice 35/4563(P)/2009) **NM 89P/2009**

Insert An islet, Pulau Bakau, exists in position 0°55.15'N 103°42.83'E
(Undetermined Datum)

202 5Ed 19/10/06 Last NM 78/2009 (Admiralty Notice 35/4564(P)/2009) **NM 90P/2009**

Insert A dolphin exists in position 1°14.13'N 102°10.01'E
(Undetermined Datum)

III NAVIGATIONAL INFORMATION

*(NM 91/2009) PORT MARINE NOTICES

The following PMNs and PMCs have been shortlisted, as they would be of particular interest to mariners.

These notices can be accessed directly from MPA website:

http://www.mpa.gov.sg/sites/port_and_shipping/circulars_and_notices/port_marine_notices.page

PMN No.	Subject
93/2009	Extension works at Tuas Power Station Jetty.
97/2009	Reclamation work at Tuas View Extension.
99/2009	Ferry route between West Coast ECC Jetty (WCECC) and Pulau Ular Ferry Terminal (PUFT).
104/2009	Dredging and Marine construction works at Sungei Serangoon.
105/2009	A) Maintenance dredging works at Tanjong Pagar, Keppel and Brani Terminals. B) Upgrading of Berth K12 at Keppel Terminal.
112/2009	Sand mining at East Keppel fairway.

*(NM 92/2009) CABLE LAYING AND REPAIR OPERATIONS FOR SUBMARINE CABLES – SINGAPORE (CHANGI FERRY TERMINAL) TO SINGAPORE STRAIT EASTWARDS

Date : With effect from 31 July 09 to 30 September 09.

1. Cable laying and repair operations are in progress in the following area (in WGS84) :

1°17-800'N	104°06-647'E to
1°17-546'N	104°06-785'E to
1°17-419'N	104°06-514'E to
1°17-625'N	104°06-411'E

2. Charts affected : SP1/GSP1, 202, 502
3. Mariners are advised
 - (a) to navigate with caution
 - (b) not to anchor or trawl in the vicinity of the cable route

Source : HD/DB67/5/2009 and HD/DB67/6/2009

III NAVIGATIONAL INFORMATION

*(NM 93/2009) SINGAPOREAN PRINT ON DEMAND (POD) CHARTS

Print On Demand (POD) Charts are the most up-to-date paper nautical charts printed for navigational use. These nautical charts are produced in accordance with the International Hydrographic Organisation (IHO) charting specifications. These official nautical charts are continually updated to the latest Notices to Mariners before they are printed and sold to users.

These POD Charts include 200, 201, 202, 500, 501, 502, 503.

BENEFITS TO OUR CUSTOMERS

Convenience

Customers need not make numerous hand corrections to the nautical charts before use. In addition the updated POD Charts are more accurate and reliable than offset printed charts with hand corrections.

Clarity

Clarity in the presentation of updated information as compared to lithographic printed charts, where in some cases there are several overlapping corrections over existing information.

Coverage

The POD Charts cover the Malacca and Singapore Straits, from One Fathom Bank to Horsburgh Lighthouse.

*(NM 94/2009) **3RD INTERNATIONAL ECDIS CONFERENCE AND EXHIBITION (IEC 2009)**

The Conference

New legislation to mandate the carriage of Electronic Chart Display Information System (ECDIS) has huge implications for the shipping industry but also significant opportunities for safer, more efficient, more cost-effective fleet operations. In addition, ECDIS are increasingly offering more and more features and functionality that far exceed basic navigation. The IEC 09 will enable you to learn how to get the most from your fleet's transition to ECDIS and e-Navigation and discover what ECDIS has to offer beyond regulatory compliance and its core navigational benefits.

When

19th – 21st Oct 2009

Where

The Regent Singapore

For more information and to register, please see the attached IEC Final Announcement and visit <http://www.ecdis09.com>

III AMENDMENTS TO PUBLICATIONS

***(NM 95/2009) UPDATING OF PUBLICATION “SINGAPORE PORT INFORMATION 2008/2009 EDITION”**

1. Page 144 – Item 16.1

JURONG ISLAND (EXXONMOBIL ASIA PACIFIC PTE LTD) (1°16.0'N, 103°42.3'E)

Insert the following :

Berth	Depth Alongside (Year Surveyed)	
	Delete	Insert
Barge Wharf (Uploading)	4.7m(2008)	5.0m(2009)

Source : HD/HY Code E00104609

2. Page 147 – Item 27

SENOKO POWER STATION (SENOKO POWER LTD (1°28.0'N, 103°47.7'E)

Insert the following :

Berth	Length of Berth		Depth Alongside (Year Surveyed)	
	Delete	Insert	Delete	Insert
Jetty	328m	302m	10.0m	11.5m(2009)

Source : HD/HY Code M00103809

3. Page 148 – Item 29

PULAU BUKOM (SHELL REFINERY) (1°14.0'N, 103°46.1'E)

Insert the following :

Berth	Depth Alongside (Year Surveyed)	
	Delete	Insert
Shell SBM	24.6m(2009)	24.5(2009)

Source : HD/HY Code F00106409

IV
REPRINT OF RADIO NAVIGATIONAL WARNINGS

TT173

VSLs IN EAST JOHOR STRAIT ARE ADVISED TO NAVIGATE WITH CAUTION WHEN NEAR THE PROJECT AREAS OFF PU.TEKONG, PU.SERANGOON, CHANGI AND MALANG PAPAN AS SHALLOW WATER AREAS EXIST. VSLs ARE ADVISED TO KEEP LOOKOUT FOR TUGS AND BARGES NAVIGATING NEAR THE PROJECT AREAS AND PASSENGER FERRIES CROSSING BETWEEN CHANGI AND PULAU TEKONG AND VICINITY OF PASIR GUDANG.

TT611

A SHIP REPORTED LOSING HER PORT ANCHOR AND 12 SHACKLES OF ANCHOR CHAIN, IN APROX POSN 01°11.55'N 103°52.52'E, OFF BATU BERHENTI BEACON.

TT619

DREDGER GERARDUS MERCATOR/QUEEN OF PENTA OCEAN IS CONDUCTING DREDGING OPERATIONS IN POSITIONS BOUNDED BY COORDINATES:

01°15.827' N 103°57.737' E

01°14.865' N 103°58.134' E

01°13.298' N 103°54.401' E

01°13.884' N 103°54.131' E

VESSELS ARE ADVISED TO PROCEED AT SAFE SPEED AND TO GIVE A WIDE BERTH.

TT753

A SMALL WOODEN CARGO BOAT 10M IN LENGTH SUNK AT 01°15.73'N 103°32.1'E.

SR123

SEA ROBBERIES REPORTED IN THE SINGAPORE STRAITS, MARINERS ARE ADVISED TO TAKE PRECAUTIONS AND INCREASE LOOK-OUT FOR SUSPICIOUS SMALL FAST MOVING CRAFT APPROACHING THEIR VESSELS. MARINERS ARE TO MAINTAIN ANTI-PIRACY WATCH WHEN PASSING THROUGH THE AREA.

SR140 (AMENDED ON 030250Z)

NUMEROUS REPORTS OF SEA ROBBERY IN THE VICINITY OF PULAU TIOMAN, SOUTH OF PULAU AUR AND OFF HELEN MAR REEF.

LATEST INCIDENT ON 02 AUG 09 0130HRS AT 02°51.65'N 105°06.12'E AND ON 11 JUL 09 1800 UTC IN THE SINGAPORE STRAIT TSS OFF RAFFLES LT HSE.

SR144

REPORT OF ATEMPTED SEA ROBBERY ON 15 AUG 09 0345LT AT POSN 01°18.9'N 104°16.19'E.

MARINERS ARE ADVISED TO TAKE PRECAUTIONS AND INCREASE LOOK-OUT FOR SUSPICIOUS SMALL FAST CRAFT APPROACHING THEIR VESSELS AND MAINTAIN ANTI-PIRACY WATCH WHEN PASSING THROUGH THE AREA.

ISSUED BY SINGAPORE PORT OPERATIONS CONTROL CENTRE
(as at 23 August 2009)

V
**REPRINT OF ADMIRALTY NOTICES TO MARINERS
 FOR DUAL BADGED CHARTS**

These notices can be accessed directly from UKHO Website:

<http://www.ukho.gov.uk/ProductsandServices/MaritimeSafety/Pages/NMPublic.aspx>

4211* SINGAPORE – Keppel Harbour, Jurong Island, Raffles Shoal, East Jurong Channel, Main Strait and North of Changi – Depths. Obstruction. Buoyage. Coastline. Dredged depths. Works. Berth.

Source: Maritime and Port Authority of Singapore

Chart 4030 [previous update 2418/09] WGS84 DATUM

Insert depth **21₆** (a) 1° 11'.941N., 103° 38'.441E.

Delete depth **20₇**, 85m NW of : (a) above

Chart 4031 [previous update 1793/09] WGS84 DATUM

Insert  **Fl.G.2s BB9** 1° 15'.609N., 103° 41'.576E.

Chart 4032 [previous update 3353/09] WGS84 DATUM

Insert  **Fl.G.2s BB9** 1° 15'.609N., 103° 41'.576E.

Chart 4034 [previous update 3353/09] WGS84 DATUM

Insert the accompanying block, showing amendments to coastline, dredged depth, depth, buoyage, works and berth, centred on : 1° 16'.710N., 103° 45'.100E.

Substitute  **Fl.Y.5s OVPJ** for  **Fl.Y.5s OVPJ** 1° 17'.946N., 103° 43'.898E.

Chart 4036 [previous update 3353/09] WGS84 DATUM

Substitute  **Obstn** for  **Obstn** 1° 11'.123N., 103° 47'.648E.

Chart 4037 [previous update New Edition 21/05/2009] WGS84 DATUM

Insert  **MS 34** 1° 16'.327N., 103° 52'.145E.

Amend dredged depth to, **15.0m (2009)**, centred on : 1° 15'.660N., 103° 50'.366E.
 dredged depth to, **15.0m (2009)**, centred on : 1° 15'.540N., 103° 50'.491E.
 dredged depth to, **12.4m (2009)**, centred on : 1° 15'.431N., 103° 50'.496E.
 dredged depth to, **14.2m (2009)**, centred on : 1° 15'.708N., 103° 50'.790E.
 dredged depth to, **12.0m (2009)**, centred on : 1° 16'.038N., 103° 49'.992E.
 dredged depth to, **13.6m (2009)**, centred on : 1° 16'.096N., 103° 51'.104E.
 dredged depth to, **13.6m (2009)**, centred on : 1° 15'.936N., 103° 51'.105E.

Chart 4038 [previous update 3731/09] WGS84 DATUM

Insert depth **21₆** (a) 1° 11'.94N., 103° 38'.44E.

Delete depth **20₇**, close NNW of : (a) above

Source: Malaysia Notice 86/09

Insert limit of restricted area, ~~TTTT~~~~TTTT~~, joining :

1° 18'.89N., 104° 13'.46E.
1° 19'.28N., 104° 15'.75E.
1° 19'.97N., 104° 16'.06E.
1° 20'.55N., 104° 19'.31E.
1° 20'.34N., 104° 19'.50E.
(E border)
1° 19'.52N., 104° 19'.50E.
(E border)
1° 19'.42N., 104° 19'.39E.
1° 18'.48N., 104° 13'.58E.

Substitute depth 11_1 for depth 12_5

1° 17'.332N., 103° 40'.770E.

1° 16'.500N., 103° 44'.410E.
1° 18'.496N., 103° 42'.907E.
1° 18'.498N., 103° 42'.814E.

1° 15'.820N., 103° 50'.890E.

Insert  ***Fl.Y.6s MBB1***
 ***Fl.Y.6s MBB2***

1° 16'.72N., 103° 52'.43E.
1° 16'.75N., 103° 52'.49E.

1° 20'.20N., 103° 33'.00E.
1° 21'.47N., 103° 32'.63E.
1° 19'.54N., 103° 33'.35E.
1° 20'.49N., 103° 32'.99E.

V

REPRINT OF ADMIRALTY NOTICES TO MARINERS FOR DUAL BADGED CHARTS

Chart 4038 [previous update 4211/09] WGS84 DATUM

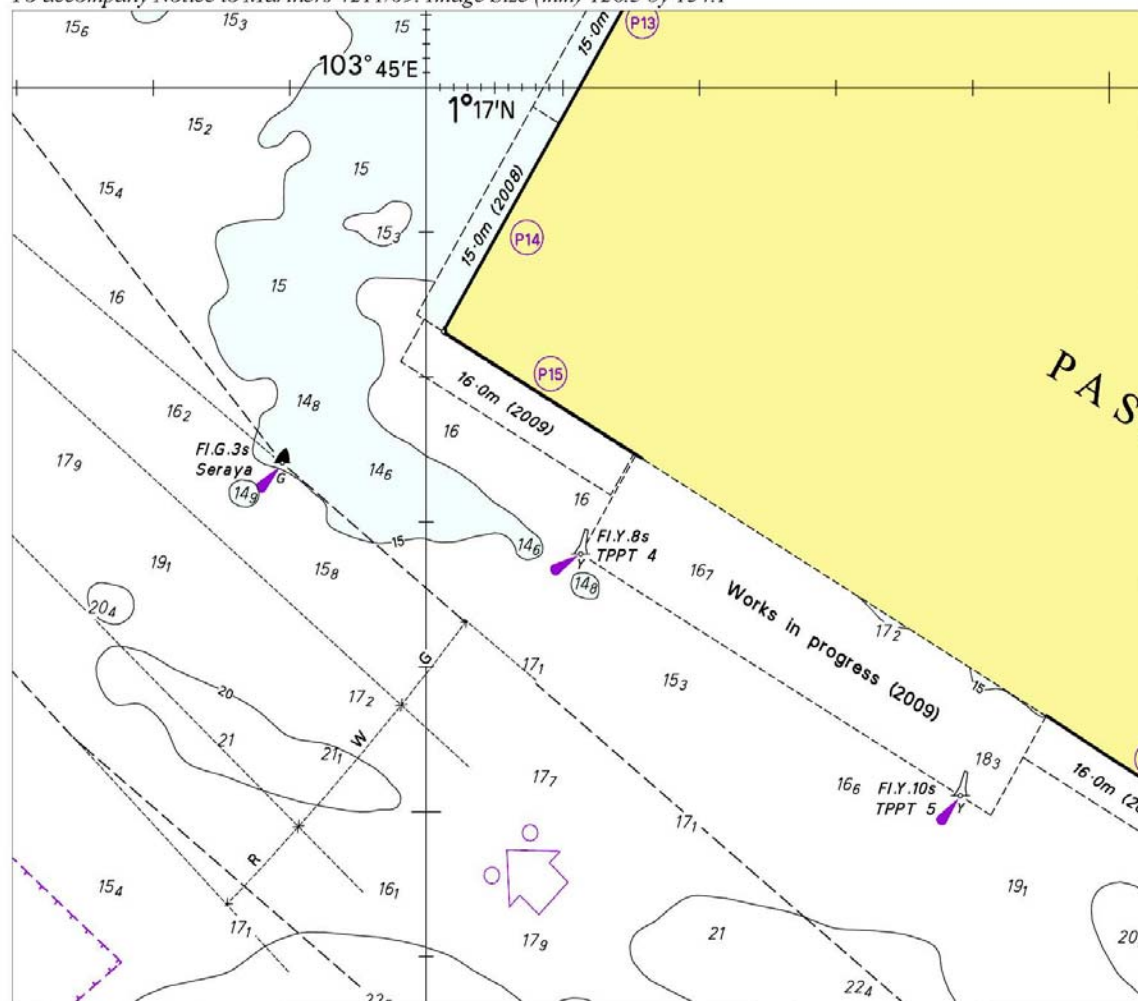
Insert legend, **Less water reported (2009)**, orientated N/S, centred on:
Amend legend to, **16.0m (2009)**, centred on:

1° 18'.90N., 103° 33'.06E.
1° 21'.45N., 103° 32'.64E.
1° 18'.57N., 103° 33'.39E.
1° 16'.60N., 103° 32'.84E.
1° 20'.32N., 103° 33'.08E.

legend to, **17.0m (2009)**, centred on:

Updated to Admiralty Notices to Mariners Edition No. 35 of 2009 dated 27 August 2009.

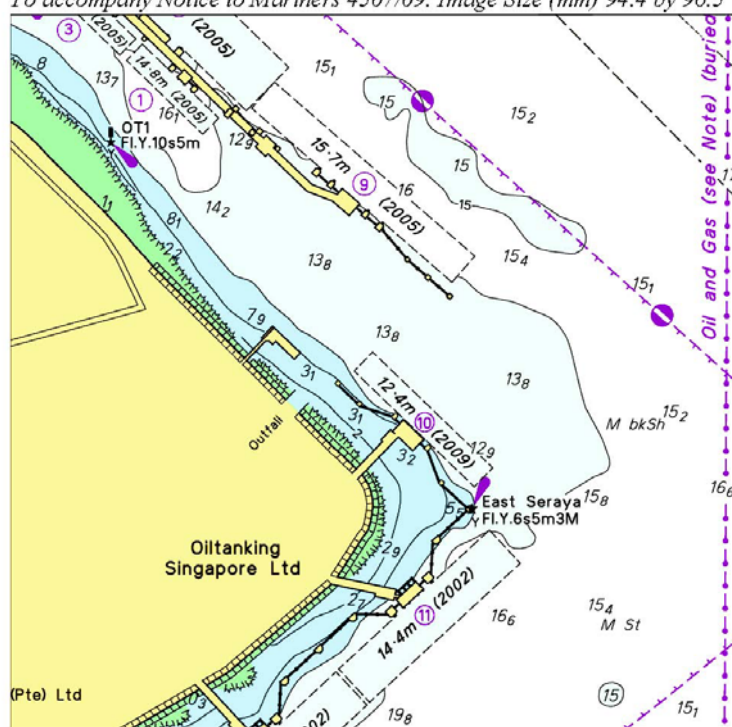
To accompany Notice to Mariners 4211/09. Image Size (mm) 126.3 by 154.1



Block for Chart No 4034

V
**REPRINT OF ADMIRALTY NOTICES TO MARINERS
 FOR DUAL BADGED CHARTS**

To accompany Notice to Mariners 4507/09. Image Size (mm) 94.4 by 96.5



Block for Chart No 4034

SINGAPORE ELECTRONIC NAVIGATIONAL CHARTS (ENC) DISTRIBUTORS
Please approach any of the appointed distributors to purchase the Singapore ENC.

CONTACT PERSON	ADDRESS	TELEPHONE/FAX NO./EMAIL/WEBSITE
Mr Chong Chee Meng	DPM (Singapore) Pte Ltd 1 Maritime Square, #09-72 Harbour Front Centre, Singapore 099253	Tel. No.: +65 6270 4060 Fax No.: +65 6276 3858 Email: sales@dpmsingapore.com.sg Website: http://www.dpmsingapore.com.sg
Mr Hamzah Akhbar	Kelvin Hughes(S) Pte Ltd 8 Pandan Avenue #02-00, Singapore 609384	Tel. No.: +65 6545 9880 ext.24 Fax No.: +65 6545 8892 Email: hamzah.akhbar@khsing.com Website: http://www.kelvinhughes.co.uk
Mr Looi Keen Wai	Maritime Information Systems (MARIS) 52, Telok Blangah Road #01-06, Telok Blangah Centre, Singapore 058809	Tel. No.: +65 6276 1472 Fax No.: +65 6276 1473 Email: support@maris.sg Website: http://www.maris.no
Ms Kathrine Bjaroy	Maritime Information System AS (MARIS) Danholmen 25, 3128 Notteroy, Norway	Tel. No.: +47 33 30 42 50 Fax No.: +47 33 30 42 51 Email: roar.moe@maris.no Website: http://www.maris.no
Mr Dave Chow En Wai	Motion Smith 15 Jalan Kilang Barat #08-01/05 Frontech Centre Singapore 159357	Tel. No.: +65 6220 5098 Fax No.: +65 6225 4902 Email: sales@motsmith.com Website: http://www.motsmith.com
Mr Dominic Oliver	Transas Marine Pacific Pte Ltd 750C Chai Chee Road, #04-07, Technopark@Chai Chee, Singapore 469003	Tel. No.: +65 6443 3061 Fax No.: +65 6443 3025 Email: dominic@transas.com.sg Website: http://www.transas.com.sg
Mr Choy Kum Weng	Vector Services Pte Ltd 15 West Coast Highway, #02-14A Pasir Panjang Building Singapore 117861	Tel. No.: +65 6777 3602 Fax No.: +65 6777 9203 Email: kwchoy@pacific.net.sg
Mr George Arts	Marine Press of Canada 640 Rue St-Paul Ouest, Suite 300 Montreal (QC) Canada, H3C1L9	Tel. No.: (514) 866-8342 Fax No.: (514) 866-9050 Email : sales@marinepress.com Website: http://www.marinepress.com
Mr Thomas Wilde	HanseNautic GmbH Bade & Hornig, Eckardt & Messtorff Herrengarten 31 D-20459 Hamburg, Germany	Tel. No.: +49 40 374 811-32 Fax No.: +49 40 366 400 Email: wilde@hansenautic.de Website : http://www.HanseNautic.com
Ms Verena Borsos	SevenCs AG + Co. KG Ruhrstrasse 90, D-22761 Hamburg, Germany	Tel. No.: +49 40 853 58 6940 Fax No.: +49 40 853 58 6949 Email: sales@chartworld.com Website : http://www.sevencs.com
Mr Keiji Shimizu	Japan Hydrographic Association Electronic Charts Division Daiichi Sogo Bldg, 6F 1-6-6, Hanedakuko, Ota-ku, Tokyo 144-0041, Japan	Tel. No.: +81 3 5708 7093 Fax No.: +81 3 5708 7094 Email: enc-support@jha.jp Website: http://www.jha.jp

SINGAPORE ELECTRONIC NAVIGATIONAL CHARTS (ENC) DISTRIBUTORS
Please approach any of the appointed distributors to purchase the Singapore ENC.

CONTACT PERSON	ADDRESS	TELEPHONE/FAX NO./EMAIL/WEBSITE
Mr Jester-Kim	E_MLX Co. Ltd Ssangyong Research No.2 Lab Sinseong-Dong 100 Yusong-Gu, Daejeon 305-804, Korea (ROK)	Tel. No.: +82 42 865 1893 Fax No.: +82 42 865 1884 Email: Jester-kim@emlx.co.kr
Mr C G Kim	Korean Ocean Development Co. Ltd 2ND Fl, Dongbang Bldg, 25-4, 4 Ga Jungang-Dong, Jung-Gu, Busan, South Korea	Tel. No.: +82 514 66 0760 Fax No.: +82 514 65 9345 Email: sales@chartkorea.com Website: http://www.chartkorea.com
Mr Kjell Nodland	Jeppesen Norway A/S P.O Box 212 , N-4379 Egersund, Norway	Tel No.: +47 514 64 700 Fax No: +47 514 64 701 Email: enc@c-map.no Website : http://www.c-map.no
Ms Eva Hegland	PRIMAR STAVANGER Lervigsveien 36, P.O Box 60, N-4001 Stavanger, Norway	Tel. No.: +47 51 93 9500 Fax No.: +47 51 93 9501 Email: sales@primar.org Website : http://www.primar-stavanger.org
Mrs Christine Trickett	United Kingdom Hydrographic Office Admiralty Way, Taunton, Somerset TA1 2DN United Kingdom	Tel. No.: +44 (0)1823 337900 Fax No.: +44 (0)1823 284077 Emails: vargroup@ukho.gov.uk & christine.trickett@ukho.gov.uk Website: http://www.ukho.gov.uk

**Agents for the Maritime and Port Authority of Singapore
Nautical Charts and Publications**

Agent's name : **DPM (Singapore) Pte Ltd**
Address : 1 Maritime Square #09-72, HarbourFront Centre,
Singapore 099253
Telephone : (65) 6270 4060
Fax No. : (65) 6276 3858
E-mail : sales@dpmsingapore.com.sg
Internet Web Site : http://www.dpmsingapore.com.sg

Agent's name : **E.W. Liner Charts & Publications Pte Ltd**
Address : 102F, Pasir Panjang Road, #08-01, Citilink Warehouse Complex,
Singapore 118530
Telephone : (65) 6323 0773
Fax No. : (65) 6323 0775
E-mail : ewliner@singnet.com.sg
Internet Web Site : http://www.ewliner.com

Agent's name : **Motion Smith**
Address : 15 Jalan Kilang Barat
#08-01/05 Frontech Centre,
Singapore 159357
Telephone : (65) 6220 5098
: (After office hours: 8163 9993)
Fax No. : (65) 6225 4902
E-mail : sales@motsmith.com
Internet Web Site : http://www.motsmith.com

HYDROGRAPHIC NOTE - Instructions

1. Mariners are requested to notify the Chief Hydrographer, Maritime and Port Authority of Singapore, when new or suspected dangers to navigation are discovered, changes are observed in aids to navigation or where corrections to nautical publications may be necessary. Reports, which cannot be confirmed or are lacking in certain details should not be withheld.
2. Any ambiguities of time, positioning and depth should be stressed and any firm expectation of being able to check the information provided on a following voyage should be mentioned.
3. Mariners using satellite position fixing systems, eg. GPS, should provide details of equipment and datum used (where applicable). Where bearings (true or magnetic) are taken visually or by radar to fix a position, it should include more than two objects in order to provide a check on its accuracy. A position may also be defined by bearing and distance from a conspicuous object eg. beacon, lighthouse etc.
4. The note should include a tracing or a digital image of the chart used and the details should be clearly marked.
5. Echo sounders frequently register greater depths than the advertised maximum depth for the equipment, eg. a trace appearing at 50 metres may be in fact be 550 metres or even 1050 metres for equipment whose maximum depth is 500 metres. Erroneous depths caused by 2nd transmission error can usually be recognised by the following:
 - (a) the tracing being weaker than normal for the depth registered,
 - (b) the trace appearing to pass through the transmission line,
 - (c) the feathery nature of the trace.
6. An acknowledgement of receipt will be sent. When a Notice to Mariners is issued, the sender's vessel or name is quoted as the source unless the same information is also received in foreign Notices to Mariners.
7. Reports of shoals, uncharted dangers and defects in aids to navigation may also be made to the appropriate Singapore Port Operations Control Centre on VHF Channels 10, 12, 14, 68 or 73.

HYDROGRAPHIC NOTE

To:

Chief Hydrographer
Hydrographic Department
Maritime and Port Authority of Singapore
460 Alexandra Road PSA Building #20-00
Singapore 119963

Tel : (65) 6375 1227
Fax : (65) 6278 7646
Email : hydrographic@mpa.gov.sg

Sender's Contact Details :

Date :

Name of Vessel :

Address of Sender :

Tel : Fax :

Email :

Nature of Observation :

General Location :

Subject :

Position : Lat. Long.

Charts Used :

Date & Time of Observation :

Details :

.....

.....

Attachment :

Equipment Used :

Type of Position Fixing : GPS / DGPS Others :

Type of Echo Sounder :

Name and Signature :

Ship's/Company's stamp :

Join us in Singapore from 19-21 October and find out all you need to know about recent and future technological advancements, regulatory changes, training and the proven benefits of effective implementation of ECDIS.



To find out more and to register online, visit the IEC website: **www.ecdis09.com**



3RD INTERNATIONAL ECDIS CONFERENCE AND EXHIBITION

Register online at:

www.ecdis09.com

2012 Mandatory Carriage of ECDIS: Are You Ready?

IEC 09: ECDIS - Beyond Navigation Discover All Your Fleet Needs to Know

19-21 October 2009, The Regent, Singapore



Co-organised by the Maritime and Port Authority of Singapore and UKHO, IEC 09 invites the international shipping community to take part in a series of essential debates, keynote speeches and panel sessions which will provide a practical guide to the transition towards ECDIS mandation and assess the impact and benefits of ECDIS beyond its traditional navigation capabilities.

BEYOND NAVIGATION...



Session 1: What's New for ECDIS?

For over ten years, ECDIS has been a talking point within the industry, but take up has been limited. So just what's changed to make the IMO confident enough to mandate it? We look at significant developments in both systems and charts over the last three years and set the scene for the international shipping industry's transformation from paper to e-Navigation.

Session 2: ECDIS: Time to Get Serious

With less than 20% of SOLAS class vessels fitted with ECDIS, just when will shipping companies have to start taking ECDIS mandation seriously? What are the risks and rewards of action now? What do you need to know to make the right decision about when to switch your fleet? Just how much of a transformation might it be? We discuss

opportunities and benefits of an early transition to e-Navigation versus the 'wait and see' approach.

Session 3: ECDIS: Your Business Partner

More and more shipping companies are finding the switch to e-Navigation can be a trigger for greater cost efficiencies, better charter rates and more professional, more highly skilled crews. How should you think about e-Navigation? As a cost reduction opportunity? Could you use technology to transform the effectiveness of fleet operations? Can e-Navigation really give you better financial results? The safety case has been made but is there a business case for ECDIS?

Session 4: Training for ECDIS

Recent high profile incidents have raised the issue of training both in terms of systems and also

ENCs. What is available in terms of training? What are the training considerations when transitioning from paper to e-Navigation? What's available? What's needed? What do you need to know to manage it well and what are the implications of getting it wrong?

Session 5: ECDIS: Beyond Navigation

ECDIS has provided e-Navigation but that is just the tip of the iceberg. Increasingly systems are offering more and more features and functionality that far exceed basic navigation. Just what does the future hold? How will our bridge systems of the future compare to today? How can you future-proof your fleet and make the most of your ECDIS investment?

Register online at: www.ecdis09.com

All internationally-renowned experts in their field, speakers at IEC09 have been drawn from across the industry and represent ship owners and managers, regulators, Flag States, industry bodies and ECDIS manufacturers, as well as the IHB, IMO and training institutions.

Confirmed speakers include:

Captain Peter Brandt, Navigation Superintendent
Stolt Tankers

Captain Dave Elliott, Marine Superintendent
Arklow Shipping

Captain Raja Ray, Senior Manager
Eagle Tankers

Sean Crowley, Electrical & Automation Manager
Stolt Tankers

Captain Sriram Rajagopal
Anglo Eastern Shipmanagement
(Hong Kong)

David Patraiko, Director of Projects
Nautical Institute

Dr Parry Oei, Chief Hydrographer
Maritime and Port Authority of S'pore

Ong Hua Siong, Assistant Director
Maritime and Port Authority of S'pore

Rear Admiral Ian Moncrieff, UK National
Hydrographer, Deputy CEO
United Kingdom Hydrographic Office

Mike Robinson, CEO
United Kingdom Hydrographic Office
Captain Robert Ward, Director
IHB

Gurpreet S Singhot, Head Operational Safety
Section Maritime Safety Division
IMO

Gerry Larson-Fedde, Director General
Norwegian Hydrographic Service
Peter Mantel, Business Development Manager
Transas

Bhupesh Gandhi, Director
Maris Asia Pacific

Michael J Casey, VP Geospatial Systems
IIC Technologies Inc

JJ Kim, CEO
G-MLX

Captain Satinder Viridi, Senior Lecturer
Captain Gopala Krishnan, Senior Lecturer
Singapore Maritime Academy

Zakirul Bhuiyan, Senior Lecturer Maritime
Simulation
Warsash Maritime Academy

Christian Fellingner, Account Manager
Caris Asia Pacific