



M P A
S I N G A P O R E

SINGAPOREAN NOTICES TO MARINERS

SECTION	CONTENT	Page
I	Index of Charts & Publications	168
II	New Publications	171
	Notices to Mariners and Chart Corrections	174
	Temporary and Preliminary Notices	176
III	Navigational Information	177
	Amendments to Publications	178
IV	Reprint of Radio Navigational Warnings	180
V	Reprint of Admiralty Notices to Mariners for Dual Badged Charts	181

The monthly Notices to Mariners contain corrective information affecting charts published by the Hydrographic Department, Maritime and Port Authority of Singapore. The information contained in these Notices should be updated on the charts affected. Notices under Section II apply only to the particular Singaporean Chart(s) indicated.

Mariners are requested to notify the Chief Hydrographer, Maritime and Port Authority of Singapore, immediately on the discovery of new dangers or suspected dangers to navigation and of changes or defects in aids to navigation. See Hydrographic Note on back page.

The monthly Singaporean Notices to Mariners can be accessed directly from the MPA website:
[http://www.mpa.gov.sg/sites/port_and_shipping/circulars_and_notices/singapore_notices_to_mariners\(ntm\).page](http://www.mpa.gov.sg/sites/port_and_shipping/circulars_and_notices/singapore_notices_to_mariners(ntm).page)

This service is offered free of charge.

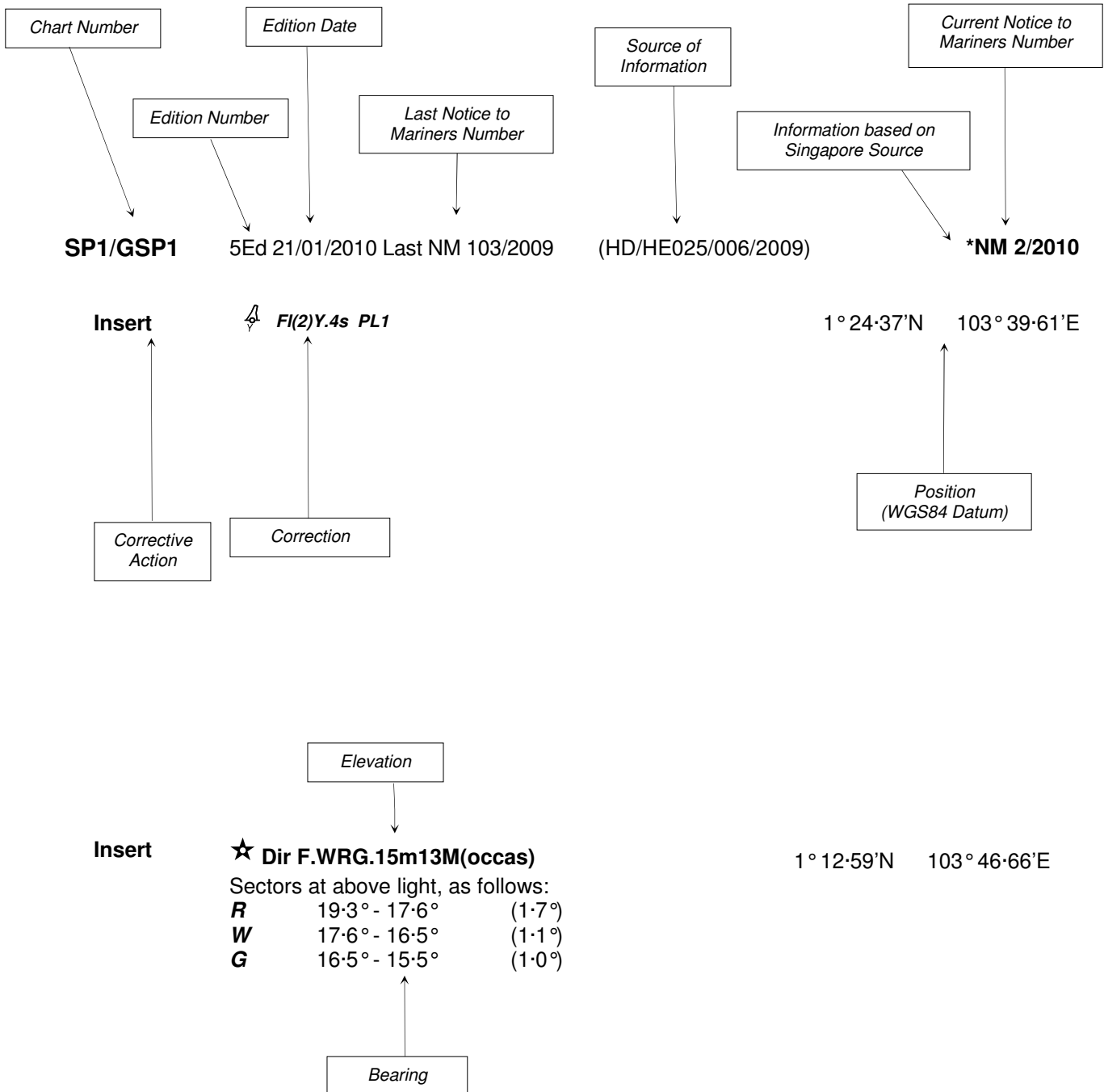
The Chief Hydrographer of
 Maritime and Port Authority of Singapore
 wishes all users of Singaporean and Dual Badged
 Charts

SELAMAT HARI RAYA AIDILFITRI

Hydrographic Department
 Maritime and Port Authority of Singapore
 460 Alexandra Road
 PSA Building #20-00
 Singapore 119963
 Tel: (65) 6375 1227
 Fax: (65) 6278 7646

EXPLANATION OF FORMAT

The elements of a typical chart correction are explained below.



Notes:

- a) Notice to Mariners number followed by:
T indicates a Temporary Notice (eg. ***NM 1T/2010**).
P indicates a Preliminary Notice (eg. ***NM 3P/2010**).
- b) Bearings are true reckoned clockwise from 000° to 359° ; those relating to lights are from seaward.
- c) Heights and elevations are above Mean High Water Springs.

I
INDEX OF CHARTS AND PUBLICATIONS

INDEX OF AFFECTED CHARTS

DESCRIPTION	NOTICE NO.	PAGE NO.
Index of Singaporean Charts	-	168
Index of Dual Badged Charts	-	169
Index of Singapore Electronic Navigational Chart (ENC)	-	170
New Publication "SINGAPORE TIDE TABLES YEAR 2011"	-	171
New Edition Dual Badged Charts	-	172, 173
Singaporean Chart SP1/GSP1	*74, 75, 76, *77	174
Singaporean Chart 200	78, 79	174
Singaporean Chart 202	80, *81, 82	175
Temporary and Preliminary Notices	83T	176
Port Marine Notices	*84	177
Singaporean Print-On-Demand (POD) Charts	*85	177
Amendments to Publications	*86	178, 179
Reprint of Radio Navigational Warnings	-	180
Reprint of Admiralty Notices to Mariners for Dual Badged Charts	-	181, 182
Singapore Electronic Navigational Chart (ENC) Distributors	-	183
Agents for the Maritime and Port Authority of Singapore Nautical Charts and Publications	-	184

*Denotes information are based on Singaporean source.

I
INDEX OF CHARTS AND PUBLICATIONS

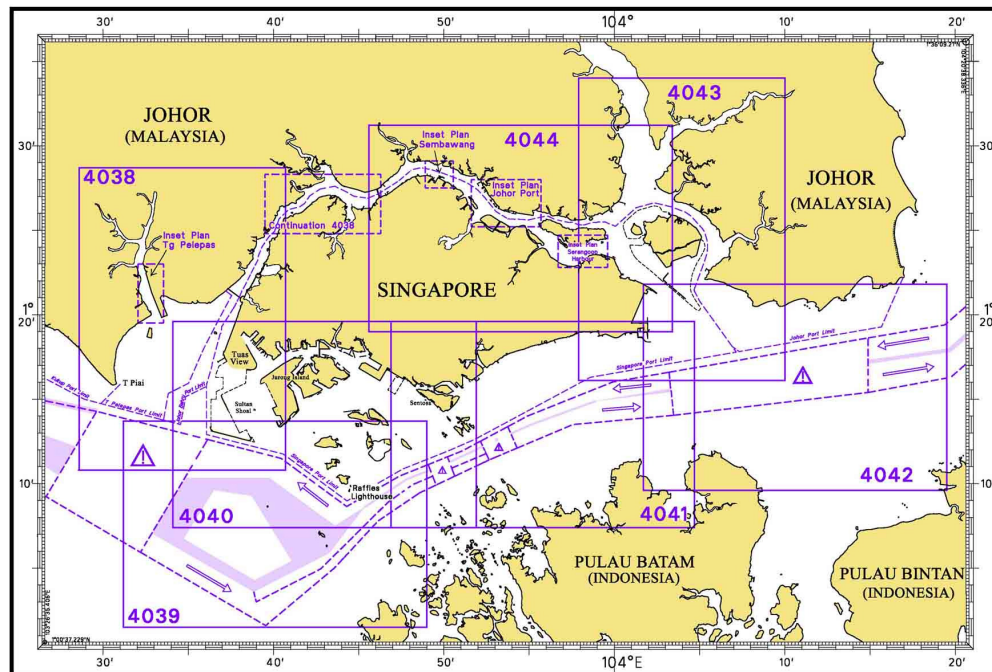
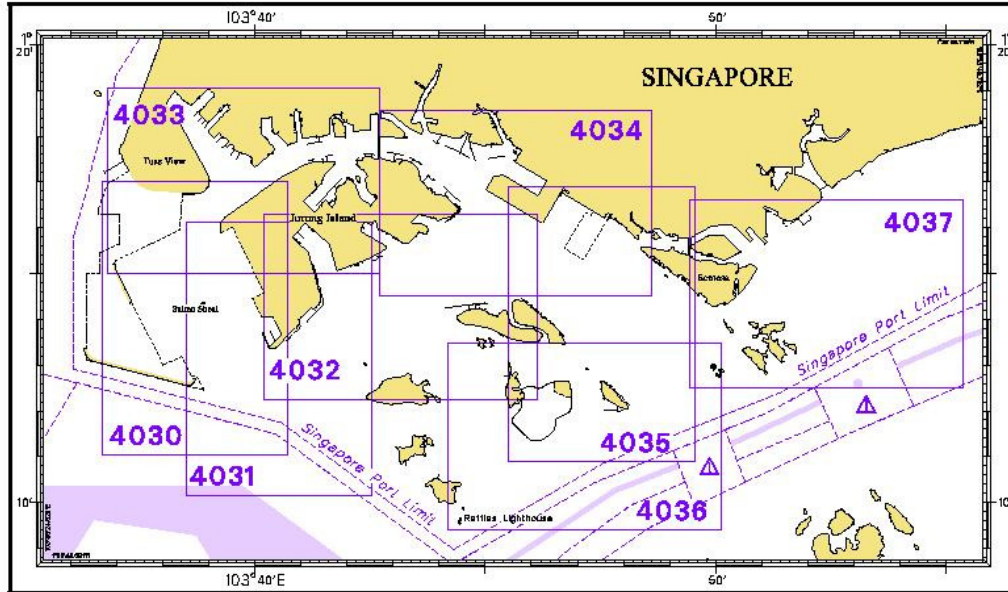
INDEX OF NOTICES

NOTICE NO.	DESCRIPTION	PAGE NO.
-	Index of Singaporean Charts	168
-	Index of Dual Badged Charts	169
-	Index of Singapore Electronic Navigational Chart (ENC)	170
-	New Publication "SINGAPORE TIDE TABLES YEAR 2011"	171
-	New Edition Dual Badged Charts	172, 173
*74, 75, 76, *77	Singaporean Chart SP1/GSP1	174
78, 79	Singaporean Chart 200	174
80, *81, 82	Singaporean Chart 202	175
83T	Temporary and Preliminary Notices	176
*84	Port Marine Notices	177
*85	Singaporean Print-On-Demand (POD) Charts	177
*86	Amendments to Publications	178, 179
-	Reprint of Radio Navigational Warnings	180
-	Reprint of Admiralty Notices to Mariners for Dual Badged Charts	181, 182
-	Singapore Electronic Navigational (ENC) Distributors	183
-	Agents for the Maritime and Port Authority of Singapore Charts and Publications	184

* Denotes information are based on Singaporean source.

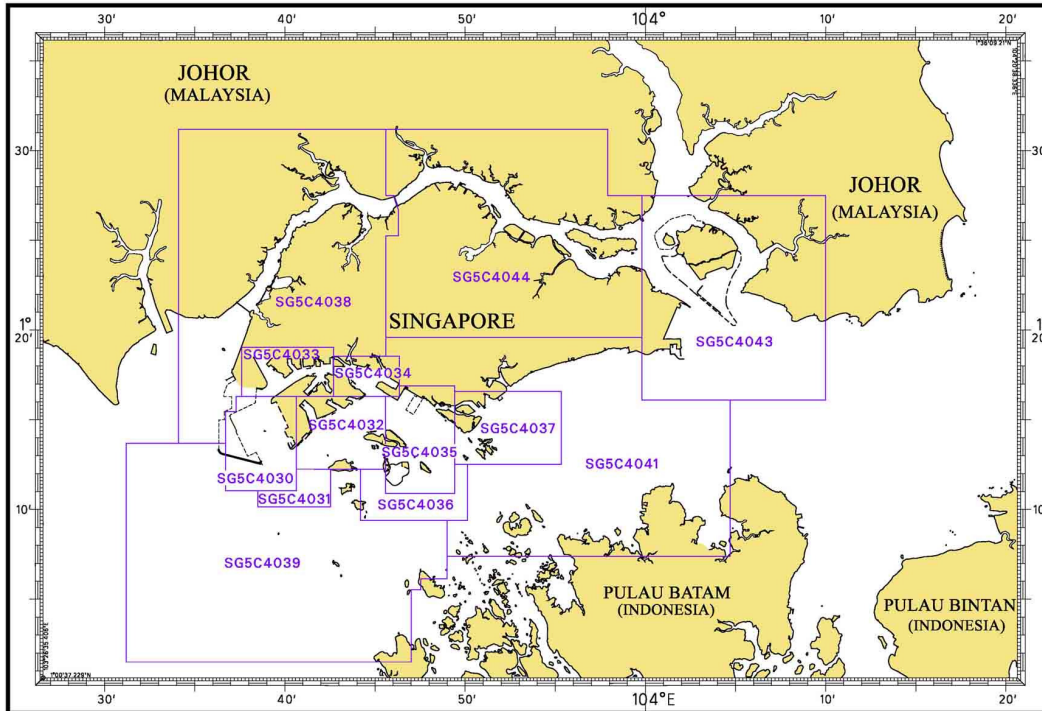
I
INDEX OF CHARTS AND PUBLICATIONS

INDEX OF DUAL BADGED CHARTS



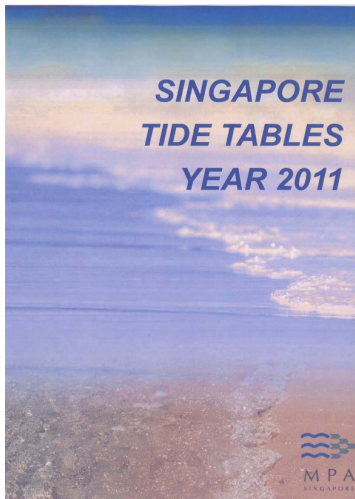
I
INDEX OF CHARTS AND PUBLICATIONS
INDEX OF SINGAPORE ELECTRONIC NAVIGATIONAL CHART (ENC)

INDEX OF SINGAPORE ENC



ENC Name	ENC Title	Latitude	Longitude
SG5C4030	West Jurong Anchorages and Temasek Fairway	1°11'050"N 1°16'300"N	103°36'700"E 103°40'640"E
SG5C4031	Western Approaches to Jurong Island	1°10'150"N 1°12'250"N	103°38'500"E 103°42'530"E
SG5C4032	Sinki Fairway	1°12'250"N 1°16'300"N	103°40'640"E 103°45'580"E
SG5C4033	Tuas Bay, West Jurong Channel and Pesek Basin	1°16'300"N 1°19'050"N	103°37'600"E 103°42'700"E
SG5C4034	East Jurong Channel, Pasir Panjang Terminal and West Keppel Fairway	1°16'300"N 1°18'550"N	103°42'700"E 103°46'356"E
SG5C4035	Western Anchorages, Jong Fairway and Cruise Bay	1°10'900"N 1°16'900"N	103°45'580"E 103°49'425"E
SG5C4036	Raffles Lighthouse to The Sisters	1°09'400"N 1°12'520"N	103°44'200"E 103°50'130"E
SG5C4037	Keppel Harbour, Tanjong Pagar Terminal and Approaches	1°12'520"N 1°16'590"N	103°49'425"E 103°55'340"E
SG5C4038	Johor Strait – Western Part	1°13'700"N 1°31'200"N	103°34'100"E 103°46'300"E
SG5C4039	Western Approaches to Main Strait	1°01'500"N 1°13'700"N	103°31'200"E 103°49'000"E
SG5C4041	Pulau Sebarok to Changi	1°07'400"N 1°19'600"N	103°45'600"E 104°04'700"E
SG5C4043	Kuala Johor and Sungai Johor	1°16'100"N 1°27'500"N	103°59'800"E 104°10'000"E
SG5C4044	Johor Strait – Eastern Part	1°19'600"N 1°31'200"N	103°45'600"E 103°59'800"E

II NEW PUBLICATIONS



SINGAPORE TIDE TABLES YEAR 2011

Summary of Publication

- (a) This 239-page book contains Tidal Height and Tidal Stream Predictions covering stations in Singapore Port waters and selected stations along the Malacca and Singapore Straits.

The predictions consist of 5 main segments to facilitate easy reference:

- High and Low Water Predictions
 - Hourly Tidal Height Predictions
 - Hourly Tidal Stream Predictions
 - Maximum and Slack Tidal Stream Predictions
 - Malacca Strait – High and Low Water Predictions
- (b) The presentation of the predictions is enhanced with colour codes so as to differentiate the various states of tidal heights, eg falling or rising tide and tidal stream directions. Moon phases, eg full and new moon, are also included in each calendar month to complement the prediction values.
- (c) The tidal heights are given in metres above Chart Datum (CD). The CD is the datum of soundings shown on the Singaporean Charts and Dual Badged Charts covering the area. A table showing the various tidal levels eg. Mean High Water Springs, Mean Low Water Springs etc, at various stations with reference to CD is also included in this publication.

To Whom Will It Be Useful?

Mariners, shipping community, port users and other interested users.

Frequency of Publication

Annually.

Cost of Publication

To be advised by Chart Agents.

Order Enquires:

This publication is available from the following Chart Agents:

- 1) DPM (Singapore) Pte Ltd
- 2) E.W. Liner Charts & Publications Pte Ltd
- 3) Motion Smith

(Please refer to Page 184 for details.)

II NEW PUBLICATIONS

NEW EDITION DUAL BADGED CHARTS PUBLISHED ON 5TH AUGUST 2010

Chart Number	:	4038
Title	:	Singapore and Malaysia Johor Strait, Western Part
Coverage	:	Lat 01°10.80'N 01°28.70'N Long 103°28.60'E 103°40.70'E
Scale	:	1: 30 000
Date Published	:	5 th August 2010
Size of Chart	:	750.6 X 1100.2 mm
Remarks	:	This new edition includes updated surveys covering these areas : <ul style="list-style-type: none"> • Temasek Fairway • West Jurong Channel • Approaches to Sinki Fairway • Tuas Anchorages • Sudong Anchorage • West of Tuas View

The existing chart of the same number published on 17th August 2006 is superseded.

Chart Number	:	4040
Title	:	Singapore, Indonesia and Malaysia Tuas View to Pulau Sakijang Bendera (S. John's Island)
Coverage	:	Lat 01°07.40'N 01°19.60'N Long 103°34.10'E 103°51.90'E
Scale	:	1: 30 000
Date Published	:	5 th August 2010
Size of Chart	:	1100.6 X 749.5 mm
Remarks	:	This new edition includes updated surveys covering these areas : <ul style="list-style-type: none"> • Temasek Fairway • West Jurong Channel • East Jurong Channel • Approaches to Sinki Fairway • Sudong Anchorages • Shell SBM Area • Selat Pauh • Buran Channel

The existing chart of the same number published on 23rd July 2009 is superseded.

II NEW PUBLICATIONS

NEW EDITION DUAL BADGED CHARTS TO BE PUBLISHED ON 30TH SEPTEMBER 2010





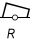







Chart Number	:	4034
Title	:	Port of Singapore – East Jurong Channel, Pasir Panjang Terminal and West Keppel Fairway
Coverage	:	Lat 01°14.50'N 01°18.55'N Long 103°42.70'E 103°48.60'E
Scale	:	1: 10 000
Date Published	:	30 th September 2010
Size of Chart	:	1094.3 X 746.3 mm
Remarks	:	This new edition includes updated surveys covering these areas : <ul style="list-style-type: none"> • Pasir Panjang Basin • Off Pasir Panjang Ferry Terminal • Tanjong Penjuru – Vopak Terminal Jetty • Jurong Island (Pulau Seraya) – Oiltanking Singapore Ltd • Portion of Sungei Pandan

The existing chart of the same number published on 8th April 2010 is superseded.

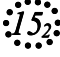
Chart Number	:	4035
Title	:	Port of Singapore – Western Anchorage, Jong Fairway and Cruise Bay
Coverage	:	Lat 01°10.90'N 01°16.90'N Long 103°45.50'E 103°49.54'E
Scale	:	1: 10 000
Date Published	:	30 th September 2010
Size of Chart	:	749.4 X 1105.7 mm
Remarks	:	This new edition includes updated surveys covering these areas : <ul style="list-style-type: none"> • Off Pasir Panjang Ferry Terminal • West of Pulau Sebarok • Shell SBM Area • South of Semakau Dumping Ground • West of Brani Causeway

The existing chart of the same number published on 8th April 2010 is superseded.

II NOTICES TO MARINERS AND CHART CORRECTIONS

SP1/GSP1	5Ed 21/01/10 Last NM 57/2010	(HD/HE025/50/2010)	* NM 74/2010
Insert	 FI(2)Y.4s W1		1°15'38"N 103°48'17"E
		(Peninsular Malaysia Marine Dept. Notice No. 67/2010)	NM 75/2010
Insert	 FI(2)R.5s Neville Rock		1°26'65"N 104°02'74"E
Delete	 FI(2)R.5s8m5M		1°26'65"N 104°02'63"E
		(Peninsular Malaysia Marine Dept. Notice No. 68/2010)	NM 76/2010
Insert	 FI.R.3s Puteri Harbour		1°24'80"N 103°39'79"E
		(HD/HE025/59/2010)	* NM 77/2010
Delete	 FI.R.2s UF1		1°13'98"N 103°44'13"E
		(HD/HE025/60/2010)	
	 FI.G.4s UF2		1°13'90"N 103°44'11"E
		(HD/HE025/61/2010)	
	 FI.G.8s UF3		1°13'82"N 103°44'37"E
		(HD/HE025/62/2010)	
	 FI.R.4s UF4		1°13'85"N 103°44'56"E
		(HD/HE025/63/2010)	
	 FI.G.6s UF5		1°13'73"N 103°44'79"E
<hr/>			
200	2Ed 30/11/05 Last NM 22/2010	(Admiralty Notice 32/3915/2010)	NM 78/2010
Substitute	 Q for  Q.12m11M		2°40'75"N 101°06'53"E
		(Peninsular Malaysia Marine Dept. Notice 57/2010)	NM 79/2010
Insert	 (PA)		2°30'96"N 101°46'18"E

II
NOTICES TO MARINERS AND CHART CORRECTIONS

202	6Ed 24/09/09 Last NM 58/2010	(Admiralty Notice 31/Vol F Edition 2009/10)	NM 80/2010
Move	★ LFl.8s13m10M from to	0°44·79'N 0°45·00'N	103°35·15'E 103°35·00'E
		(HD/HY/DB67/10/2010)	*NM 81/2010
Move	 Wk Rep PA from: to:	1°26·00'N 1°26·40'N	104°38·50'E 104°40·00'E
		(Indonesian Notice 30/307/2010)	NM 82/2010
Substitute	Fl.R.3s for <i>Fl.3s</i>	0°51·33'N	104°24·32'E

III NAVIGATIONAL INFORMATION

*(NM 84/2010) PORT MARINE NOTICES

The following PMNs have been shortlisted, as they would be of particular interest to mariners.

These notices can be accessed directly from MPA website:

http://www.mpa.gov.sg/sites/port_and_shipping/circulars_and_notices/port_marine_notices.page

PMN No.	Subject
83/2010	Dredging works at East Keppel Fairway.
87/2010	Reclamation work at Tuas View extension.
92/2010	Reclamation of Jurong Island Phase 4 and Tuas View Extension.
97/2010	Construction of Container Berth and Stacking Yard on Jurong Island.

*(NM 85/2010) SINGAPOREAN PRINT-ON-DEMAND (POD) CHARTS

Print-On-Demand (POD) Charts are the most up-to-date paper nautical charts printed for navigational use. These nautical charts are produced in accordance with the International Hydrographic Organisation (IHO) charting specifications. These official nautical charts are continually updated to the latest Notices to Mariners before they are printed and sold to users.

These POD Charts include SP1/GSP1, 200, 201, 202, 500, 501, 502 and 503.

BENEFITS TO OUR CUSTOMERS

Convenience

Customers need not make numerous hand corrections to the nautical charts before use. In addition the updated POD Charts are more accurate and reliable than offset printed charts with hand corrections.

Clarity

Clarity in the presentation of updated information as compared to lithographic printed charts, where in some cases there are several overlapping corrections over existing information.

Coverage

The POD Charts cover the Malacca and Singapore Straits, from One Fathom Bank to Horsburgh Lighthouse.

III
AMENDMENTS TO PUBLICATIONS

***(NM 86/2010) UPDATING OF PUBLICATION “SINGAPORE PORT INFORMATION 2010/2011”**

1. Page 152 – Item 30

WHARVES AND BERTHS
PULAU BUKOM (SHELL REFINERY) (1°14.0'N, 103°46.1'E)

Insert the following :

	Least Depth (Year Surveyed)	
	Delete	Insert
Single Buoy Mooring	24.5m (2009)	24.6m (2009)

Source: HD/HY Code F00109609

2. Page 159 – Item 47

TUAS POWER STATION – FUEL OIL UNLOADING JETTY (1°16.7'N, 103°38.8'E)

Insert the following :

	Least Depth (Year Surveyed)	
	Delete	Insert
Fuel Oil Unloading Jetty	13.0m (2007)	13.0m (2010)

Source: HD/HY Code G00108710

3. Page 181

MPA APPOINTED ELECTRONIC NAVIGATIONAL CHART (ENC) DISTRIBUTORS

Delete the following:

DISTRIBUTOR	ADDRESS	TELEPHONE/FAX/EMAIL/WEBSITE
Kelvin Hughes(S) Pte Ltd	8 Pandan Avenue #02-00, Singapore 609384	Tel. No.: +65 6545 9880 ext.24 Fax No.: +65 6545 8892 Email: hamzah.akhbar@khsing.com Website: http://www.kelvinhughes.co.uk
Maritime Information Systems (MARIS)	52, Telok Blangah Road #01-06, Telok Blangah Centre, Singapore 058809	Tel. No.: +65 6276 1472 Fax No.: +65 6276 1473 Email: support@maris.sg Website: http://www.maris.no
Maritime Information System AS (MARIS)	Danholmen 25, 3128 Notteroy, Norway	Tel. No.: +47 33 30 42 50 Fax No.: +47 33 30 42 51 Email: roar.moe@maris.no Website: http://www.maris.no
Marine Press of Canada	640 Rue St-Paul Ouest, Suite 300 Montreal (QC) Canada, H3C1L9	Tel. No.: (514) 866 8342 Fax No.: (514) 866 9050 Email : sales@marinepress.com Website: http://www.marinepress.com

III
AMENDMENTS TO PUBLICATIONS

DISTRIBUTOR	ADDRESS	TELEPHONE/FAX/EMAIL/WEBSITE
HanseNautic GmbH Bade & Hornig, Eckardt & Messtorff	Herrengaben 31 D-20459 Hamburg, Germany	Tel. No.: +49 40 374 811-32 Fax No.: +49 40 366 400 Email: wilde@hansenautic.de Website : http://www.HanseNautic.com
E_MLX Co. Ltd	Ssangyong Research No.2 Lab Sinseong-Dong 100 Yusong-Gu, Daejoen 305-804, Korea (ROK)	Tel. No.: +82 42 865 1893 Fax No.: +82 42 865 1884 Email: Jester-kim@emlx.co.kr
Korean Ocean Development Co. Ltd	2ND Fl, Dongbang Bldg, 25-4, 4 Ga Jungang-Dong, Jung-Gu, Busan, South Korea	Tel. No.: +82 514 66 0760 Fax No.: +82 514 65 9345 Email: sales@chartkorea.com Website: http://www.chartkorea.com

Source: Termination of ENC Distributors.

IV
REPRINT OF RADIO NAVIGATIONAL WARNINGS

TT173

VESSELS IN EAST JOHOR STRAIT ARE ADVISED TO NAVIGATE WITH CAUTION WHEN NEAR THE PROJECT AREAS OFF PULAU TEKONG, CHANGI AND MALANG PAPAN AS SHALLOW WATER AREAS EXIST. VESSELS ARE ADVISED TO KEEP LOOKOUT FOR TUGS AND BARGES NAVIGATING NEAR THE PROJECT AREAS AND PASSENGER FERRIES CROSSING BETWEEN CHANGI AND PULAU TEKONG AND VICINITY OF PASIR GUDANG.

TT619

DREDGER QUEEN OF PENTA OCEAN IS CONDUCTING DREDGING OPERATIONS IN POSITIONS BOUNDED BY COORDINATES:

01°15.827' N 103°57.737' E

01°14.865' N 103°58.134' E

01°13.298' N 103°54.401' E

01°13.884' N 103°54.131' E

VESSELS ARE ADVISED TO PROCEED AT SAFE SPEED AND TO GIVE A WIDE BERTH.

TT753

A SMALL WOODEN CARGO BOAT 10M IN LENGTH SUNK AT 01°15.73'N 103°32.1'E.

TT883

CABLE SHIP 'ASEAN RESTORER' IS CARRYING OUT CABLE REPAIRS OPERATIONS AT THE FOLLOWING CO-ORDINATES:

A) 01°26.30'N 104°27.50'E

B) 01°26.40'N 104°27.60'E

C) 01°26.45'N 104°27.70'E

D) 01°22.00'N 104°27.60'E

VESSELS ARE ADVISED TO KEEP A LOOKOUT AND GIVE A WIDE BERTH.

TT884

SALVAGE OPS UNDERWAY IN 01°13.4'N 103°57.75'E. ALL SHIPS ARE REQUESTED TO GIVE A WIDE BERTH OF AT LEAST 5 CABLES WHEN PASSING THE AREA.

TT885

THE DIFFERENTIAL GLOBAL NAVIGATION SATELLITE SYSTEM REFERENCE SERVICE AT RAFFLES LIGHTHOUSE HAS BEEN UPGRADED AND OPERATIONAL.

TT886

SAFE WATER MARK LFL.10S(RW) MARKED THE ENTRANCE INTO DWR IS MISSING.

TT888

CS 'TYCO DURABLE' IS CARRYING OUT CABLE REPAIRS OPERATIONS AT THE FOLLOWING CO-ORDINATES:

01°17.9'N 104°10.5'E

01°18.9'N 104°15.1'E

01°21.2'N 104°21.3'E

01°26.6'N 104°26.95'E

VESSELS ARE ADVISED TO KEEP LOOKOUT AND GIVE A WIDE BERTH.

TT890

BATU BERHANTI BUOY FL(2)5s AT POSITION 01°11.76'N 103°52.51'E IS UNLIT.

SR154

THERE WAS A REPORT OF AN UNIDENTIFIED VESSEL SUNK SOUTHWEST OF HORSBURGH AT POSITION 01°16.12'N 104°21.5'E. VESSELS IN THE VICINITY ARE ADVISED TO KEEP A LOOKOUT AND REPORT SIGHTING TO SPOCC.

ISSUED BY SINGAPORE PORT OPERATIONS CONTROL CENTRE (as at 29th August 2010)

V
**REPRINT OF ADMIRALTY NOTICES TO MARINERS
 FOR DUAL BADGED CHARTS**

These notices can be accessed directly from UKHO Website:

<http://www.ukho.gov.uk/ProductsandServices/MaritimeSafety/Pages/NMPublic.aspx>

**3774* SINGAPORE – West Jurong Channel and West Keppel Fairway North-eastwards and Southwards -
 Buoyage. Maritime limits.**

Source: Maritime and Port Authority of Singapore

Note: This update will be included in a New Edition of Chart 4040 published 5 August 2010.

Chart 4030 [*previous update New Edition 25/03/2010*] WGS84 DATUM

Move  **FI(2)R.10s Long Shoal**, from 1° 16'·962N., 103° 39'·856E.
 to: 1° 16'·910N., 103° 39'·767E.

Chart 4033 [*previous update 2228/10*] WGS84 DATUM

Move  **FI(2)R.10s Long Shoal**, from : 1° 16'·962N., 103° 39'·856E.
 to: 1° 16'·910N., 103° 39'·767E.

Chart 4034 [*previous update 3041/10*] WGS84 DATUM

Insert Maritime limit, pecked line, joining: (a) 1° 15'· 717N., 103° 47'·669E.



(b) 1° 16'· 030N., 103° 47'·694E.

(c) 1° 16'· 153N., 103° 47'·663E.

1° 16'· 278N., 103° 47'·737E.

Move  **FI.R.8s PKH V3**, from: 1° 15'· 955N., 103° 47'·66E.
 to: (b) above

 **FI(2)R.5s PKH V5**, from: (d) 1° 16'· 148N., 103° 47'·656E.
 to: (c) above

Delete former maritime limit, pecked line, joining: (a) above
(d) above
1° 16'· 185N., 103° 47'·675E.
(shore)

Chart 4035 [*previous update 3314/10*] WGS84 DATUM



Insert maritime limit, pecked line, joining: (a) 1° 15'· 717N., 103° 47'·669E.



(b) 1° 16'· 030N., 103° 47'·694E.

(c) 1° 16'· 153N., 103° 47'·663E.

1° 16'· 278N., 103° 47'·737E.

Substitute  **FI.Y.4s ADCP 3** for  **FI.Y.4s ADCP 3** 1° 14'· 319N., 103° 46'·290E.



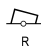
Move  **FI.R.8s PKH V3**, from: 1° 15'· 955N., 103° 47'·661E.
 to: (b) above

 **FI(2)R.5s PKH V5**, from: (d) 1° 16'· 148N., 103° 47'·656E.
 to: (c) above

Delete former maritime limit, pecked line, joining: (a) above
(d) above
1° 16'· 185N., 103° 47'·675E.
(shore)

V
**REPRINT OF ADMIRALTY NOTICES TO MARINERS
 FOR DUAL BADGED CHARTS**

Chart 4041 [*previous update 3314/10*] WGS84 DATUM

Insert	maritime limit, pecked line, joining:	(a)	1° 15'· 72N., 103° 47'·67E. ()
		(b)	1° 16'· 03N., 103° 47'·69E.
		(c)	1° 16'· 15N., 103° 47'·66E. ()
			1° 16'· 27N., 103° 47'·73E.
Move	 FI.R.8s PKH V3 , from:		1° 15'· 95N., 103° 47'·66E.
	to:		(b) above
Delete	former maritime limit, pecked line, joining:		(a) above
			(c) above
			1° 16'· 19N., 103° 47'·68E. (shore)

Updated to Admiralty Notices to Mariners Edition No. 34 of 2010 dated 26th August 2010.

SINGAPORE ELECTRONIC NAVIGATIONAL CHART (ENC) DISTRIBUTORS

Please approach any of the appointed distributors to purchase the Singapore ENC.

DISTRIBUTOR	ADDRESS	TELEPHONE/FAX NO./EMAIL/WEBSITE
DPM (Singapore) Pte Ltd	1 Maritime Square, #09-72 HarbourFront Centre, Singapore 099253	Tel. No.: +65 6270 4060 Fax No.: +65 6276 3858 Email: sales@dpmsingapore.com.sg Website: http://www.dpmsingapore.com.sg
Motion Smith	15 Jalan Kilang Barat #08-01/05 Frontech Centre Singapore 159357	Tel. No.: +65 6220 5098 Fax No.: +65 6225 4902 Email: sales@motsmith.com Website: http://www.motsmith.com
Transas Marine Pacific Pte Ltd	Cyber Centre 16 & 18 Jalan Kilang Barat Singapore 159358	Tel. No.: +65 6271 0200 Fax No.: +65 6271 7300 Email: dominic@transas.com.sg Website: http://www.transas.com.sg
Vector Services Pte Ltd	15 West Coast Highway, #02-14A Pasir Panjang Building Singapore 117861	Tel. No.: +65 6777 3602 Fax No.: +65 6777 9203 Email: kwchoy@pacific.net.sg
ChartWorld GmbH	Ruhrstrasse 90, D-22761 Hamburg, Germany	Tel. No.: +49 40 853 58 6942 Fax No.: +49 40 853 58 6949 Email: sales@chartworld.com Website : http://www.chartworld.com
Japan Hydrographic Association Electronic Charts Division	Daiichi Sogo Bldg, 6F 1-6-6, Hanedakuko, Ota-ku, Tokyo 144-0041, Japan	Tel. No.: +81 3 5708 7093 Fax No.: +81 3 5708 7094 Email: shimizu-6kj@jha.jp Website: http://www.jha.or.jp/en/jha/
Jeppesen Norway A/S	P.O Box 212 , N-4371 Egersund, Norway	Tel No.: +47 514 64 700 Fax No: +47 514 64 701 Email: license.marine@jeppesen.com Website : http://www.jeppesen.com/marine
PRIMAR STAVANGER	Lervigsveien 36, P.O Box 60, N-4001 Stavanger, Norway	Tel. No.: +47 51 93 9500 Fax No.: +47 51 93 9501 Email: sales@ecc.no Website : http://www.primar.no
United Kingdom Hydrographic Office	Admiralty Way, Taunton, Somerset TA1 2DN United Kingdom	Tel. No.: +44 1823 337900 Fax No.: +44 1823 284077 Emails: ENC.SalesReports@ukho.gov.uk Website: http://www.ukho.gov.uk

Agents for the Maritime and Port Authority of Singapore Nautical Charts and Publications

Agent's Name : **DPM (Singapore) Pte Ltd**
Address : 1 Maritime Square #09-72, HarbourFront Centre,
Singapore 099253
Telephone : (65) 6270 4060
Fax No. : (65) 6276 3858
E-mail : sales@dpmsingapore.com.sg
Internet Web Site : <http://www.dpmsingapore.com.sg>

Agent's Name : **E.W. Liner Charts & Publications Pte Ltd**
Address : 102F, Pasir Panjang Road, #08-01, Citilink Warehouse Complex,
Singapore 118530
Telephone : (65) 6323 0773
Fax No. : (65) 6323 0775
E-mail : ewliner@singnet.com.sg
Internet Web Site : <http://www.ewliner.com>

Agent's Name : **Motion Smith**
Address : 15 Jalan Kilang Barat
#08-01/05 Frontech Centre,
Singapore 159357
Telephone : (65) 6220 5098
: (After office hours: 8163 9993)
Fax No. : (65) 6225 4902
E-mail : sales@motsmith.com
Internet Web Site : <http://www.motsmith.com>

HYDROGRAPHIC NOTE - Instructions

1. Mariners are requested to notify the Chief Hydrographer, Maritime and Port Authority of Singapore, when new or suspected dangers to navigation are discovered, changes are observed in aids to navigation or where corrections to nautical publications may be necessary. Reports, which cannot be confirmed or are lacking in certain details should not be withheld.
2. Any ambiguities of time, positioning and depth should be stressed and any firm expectation of being able to check the information provided on a following voyage should be mentioned.
3. Mariners using satellite position fixing systems, eg. GPS, should provide details of equipment and datum used (where applicable). Where bearings (true or magnetic) are taken visually or by radar to fix a position, it should include more than two objects in order to provide a check on its accuracy. A position may also be defined by bearing and distance from a conspicuous object eg. beacon, lighthouse etc.
4. The note should include a tracing or a digital image of the chart used and the details should be clearly marked.
5. Echo sounders frequently register greater depths than the advertised maximum depth for the equipment, eg. a trace appearing at 50 metres may be in fact be 550 metres or even 1050 metres for equipment whose maximum depth is 500 metres. Erroneous depths caused by 2nd transmission error can usually be recognised by the following:
 - (a) the tracing being weaker than normal for the depth registered,
 - (b) the trace appearing to pass through the transmission line,
 - (c) the feathery nature of the trace.
6. Upon receipt of a hydrographic note, a Notice to Mariners may be issued. The sender's vessel or name is quoted as the source unless the same information is also received in foreign Notices to Mariners.
7. Reports of shoals, uncharted dangers and defects in aids to navigation may also be made to the appropriate Singapore Port Operations Control Centre on VHF Channels 10, 12, 14, 68 or 73.

HYDROGRAPHIC NOTE

To:

Chief Hydrographer
Hydrographic Department
Maritime and Port Authority of Singapore
460 Alexandra Road PSA Building #20-00
Singapore 119963

Tel : (65) 6375 1227
Fax : (65) 6278 7646
Email : hydrographic@mpa.gov.sg

Sender's Contact Details :

Date :

Name of Vessel :

Address of Sender :

Tel : Fax :

Email :

Nature of Observation :

General Location :

Subject :

Position : Lat. Long.

Charts Used :

Date & Time of Observation :

Details :

.....

.....

.....

Attachment :

Equipment Used :

Type of Position Fixing : GPS / DGPS Others :

Type of Echo Sounder :

Name and Signature :

Ship's/Company's Stamp :