



## SINGAPOREAN NOTICES TO MARINERS

---

SECTION	CONTENT	Page
I	Index of Charts & Publications	154
II	New Publications	157
	Notices to Mariners and Chart Corrections	164
	Temporary and Preliminary Notices	165
III	Navigational Information	166
	Amendments to Publications	167
IV	Reprint of Radio Navigational Warnings	168
V	Reprint of Admiralty Notices to Mariners for Dual Badged Charts	170

---

**The monthly Notices to Mariners contain corrective information affecting charts published by the Hydrographic Department, Maritime and Port Authority of Singapore. The information contained in these Notices should be updated on the charts affected. Notices under Section II apply only to the particular Singaporean Chart(s) indicated.**

---

Mariners are requested to notify the Chief Hydrographer, Maritime and Port Authority of Singapore, immediately on the discovery of new dangers or suspected dangers to navigation and of changes or defects in aids to navigation. See Hydrographic Note on back page.

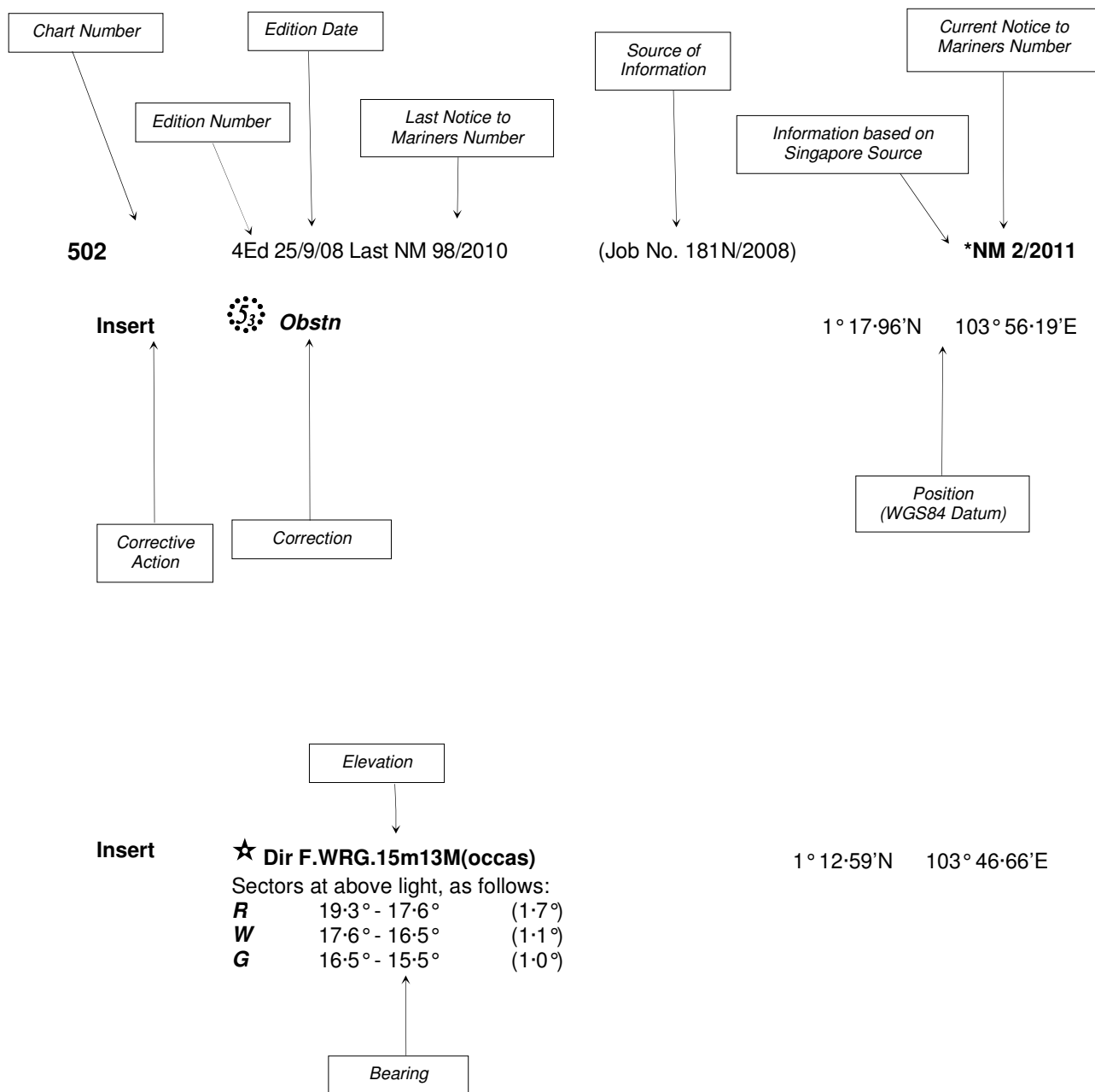
The monthly Singaporean Notices to Mariners can be accessed directly from the MPA website:  
[http://www.mpa.gov.sg/sites/port\\_and\\_shipping/circulars\\_and\\_notices/singapore\\_notices\\_to\\_mariners\(ntm\).page](http://www.mpa.gov.sg/sites/port_and_shipping/circulars_and_notices/singapore_notices_to_mariners(ntm).page)

This service is offered free of charge.

Hydrographic Department  
Maritime and Port Authority of Singapore  
460 Alexandra Road  
PSA Building #20-00  
Singapore 119963  
Tel: (65) 6375 1227  
Fax: (65) 6278 7646

## EXPLANATION OF FORMAT

The elements of a typical chart correction are explained below.



Notes:

- a) Notice to Mariners number followed by:  
**T** indicates a Temporary Notice (eg. **\*NM 3T/2011**).  
**P** indicates a Preliminary Notice (eg. **\*NM 4P/2011**).
- b) Bearings are true reckoned clockwise from 000° to 359°; those relating to lights are from seaward.
- c) Heights and elevations are above Mean High Water Springs.

I  
INDEX OF CHARTS AND PUBLICATIONS

INDEX OF AFFECTED CHARTS

DESCRIPTION	NOTICE NO.	PAGE NO.
Index of Singaporean Charts	-	154
Index of Dual Badged Charts	-	155
Index of Singapore Electronic Navigational Chart (ENC)	-	156
New Edition Dual Badged Charts	-	157 to 160
New Edition Singaporean Charts	-	158, 159
Singapore Tide Tables 2012	-	161 to 163
Singaporean Chart SP1/GSP1	72, 73	164
Singaporean Chart 202	73, *74	164
Singaporean Chart 500	73, *74	164
Singaporean Chart 501	73, *74	164
Singaporean Chart 502	72	164
Temporary and Preliminary Notices	* 75T, 76T, 77T	165
Port Marine Notices	*78	166
Singaporean Print-On-Demand (POD) Charts	*79	166
Amendments to Publications	*80	167
Reprint of Radio Navigational Warnings	-	168, 169
Reprint of Admiralty Notices to Mariners for Dual Badged Charts	-	170 to 172
Singapore Electronic Navigational Chart (ENC) Distributors	-	173
Chart Agents for the Maritime and Port Authority of Singapore Nautical Charts and Publications	-	173

\*Denotes information are based on Singaporean source.

I  
INDEX OF CHARTS AND PUBLICATIONS

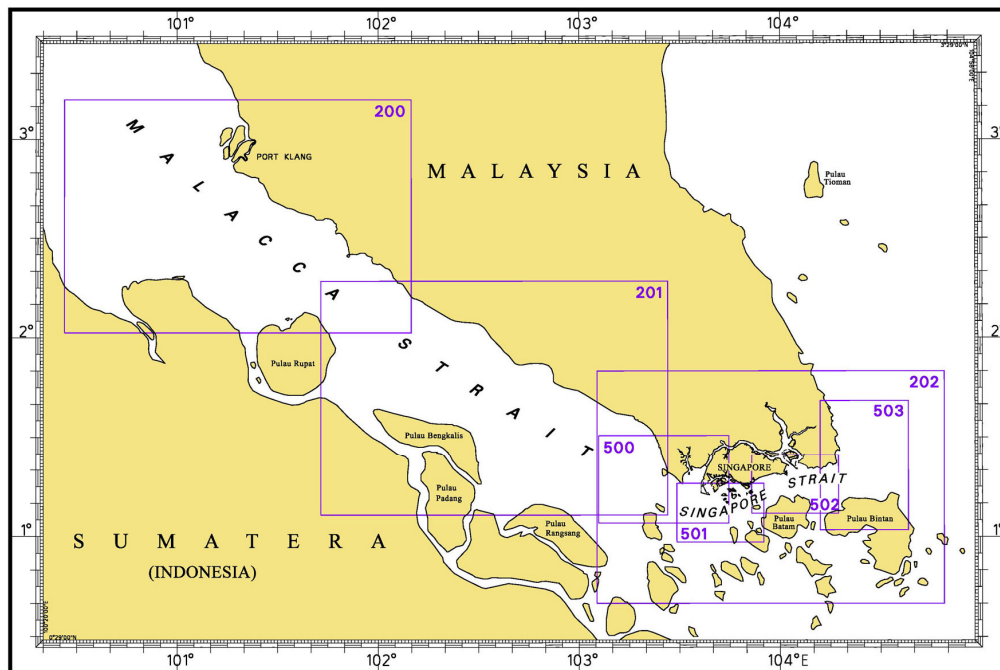
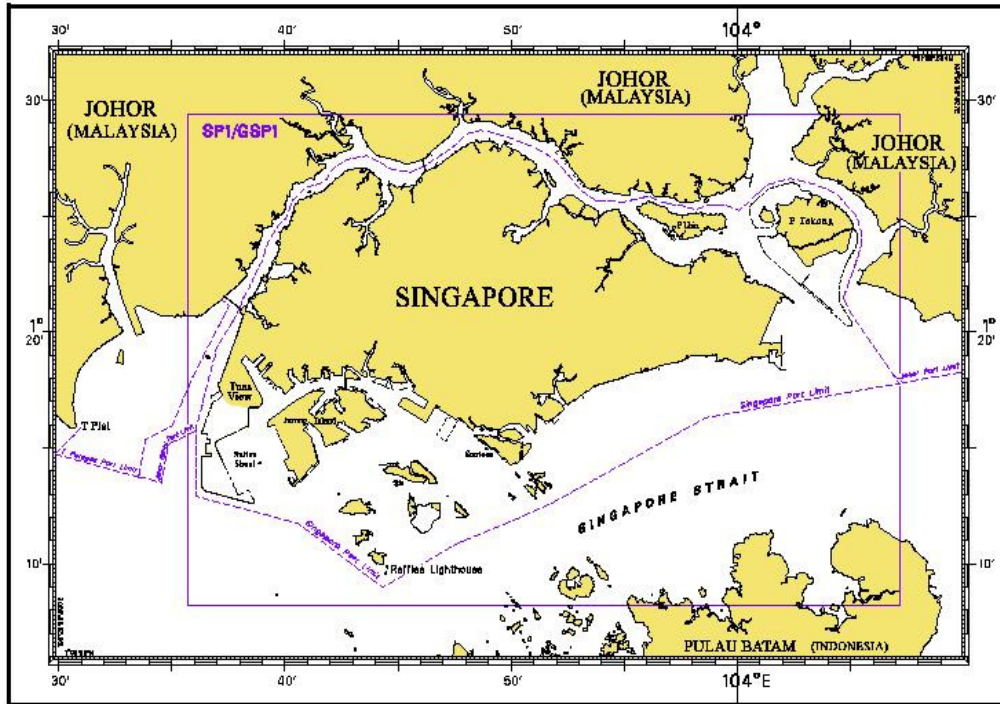
INDEX OF NOTICES

NOTICE NO.	DESCRIPTION	PAGE NO.
-	Index of Singaporean Charts	154
-	Index of Dual Badged Charts	155
-	Index of Singapore Electronic Navigational Chart (ENC)	156
-	New Edition Dual Badged Charts	157 to 160
-	New Edition Singaporean Charts	158, 159
-	Singapore Tide Tables 2012	161 to 163
72, 73	Singaporean Chart SP1/GSP1	162
73, *74	Singaporean Chart 202	162
73, *74	Singaporean Chart 500	162
73, *74	Singaporean Chart 501	162
72	Singaporean Chart 502	162
* 75T, 76T, 77T,	Temporary and Preliminary Notices	165
*78	Port Marine Notices	166
*79	Singaporean Print-On-Demand (POD) Charts	166
*80	Amendments to Publications	167
-	Reprint of Radio Navigational Warnings	168, 169
-	Reprint of Admiralty Notices to Mariners for Dual Badged Charts	170 to 172
-	Singapore Electronic Navigational Chart (ENC) Distributors	173
-	Chart Agents for the Maritime and Port Authority of Singapore Nautical Charts and Publications	173

\* Denotes information are based on Singaporean source.

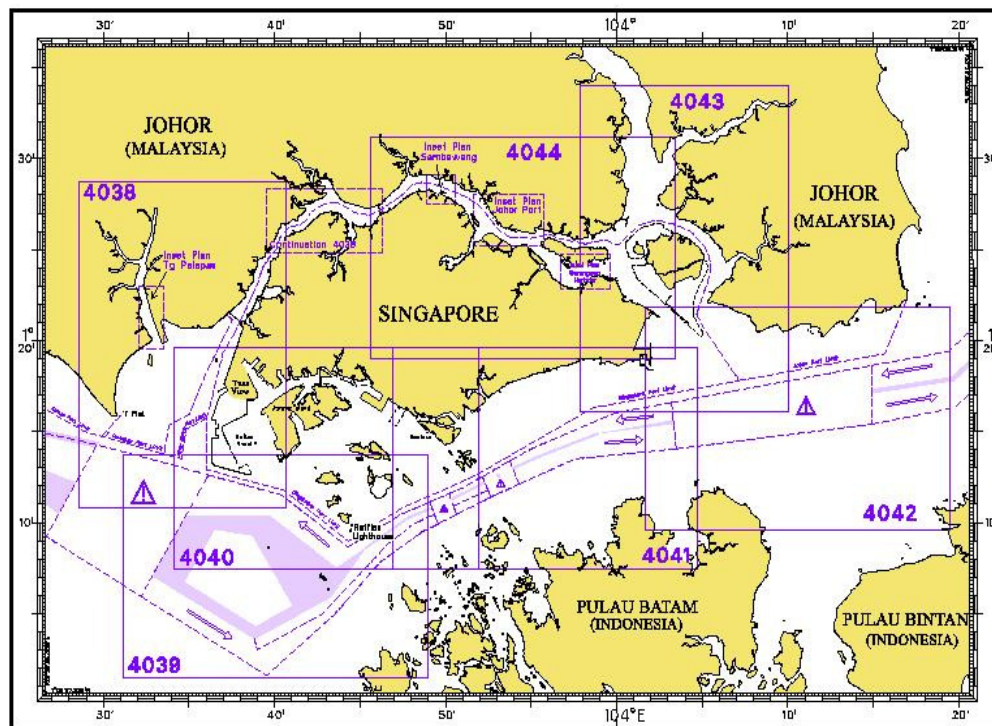
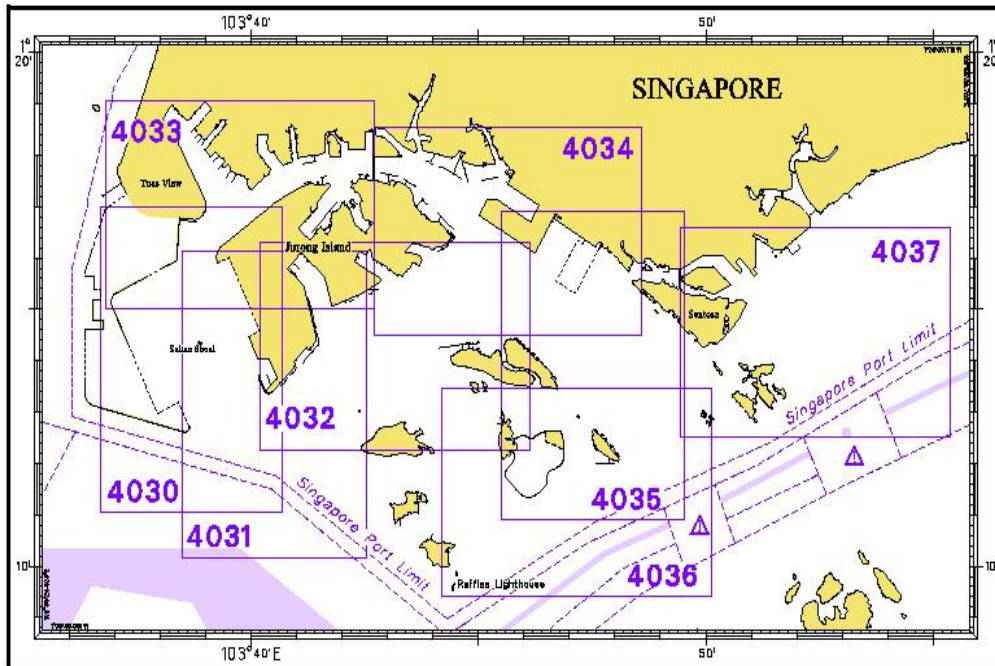
# I INDEX OF CHARTS AND PUBLICATIONS

## INDEX OF SINGAPOREAN CHARTS



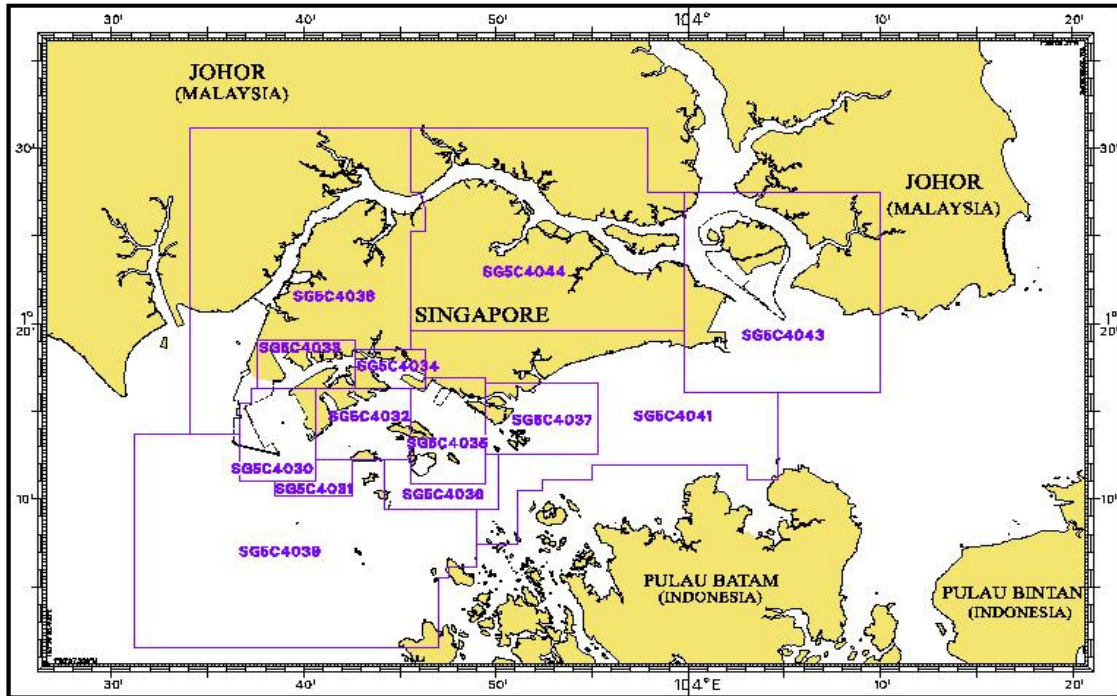
Notes:  
 Updated SINGAPOREAN Charts are available through our Print-On-Demand (POD) Chart Service. For more information, refer to Section III – Navigational Information and these charts can be purchased from our authorised Chart Agents:  
 DPM (Singapore) Pte Ltd, E.W. Liner Charts & Publications Pte Ltd and Motion Smith.

I  
**INDEX OF CHARTS AND PUBLICATIONS**  
**INDEX OF DUAL BADGED CHARTS**



I  
INDEX OF CHARTS AND PUBLICATIONS

**INDEX OF SINGAPORE ELECTRONIC NAVIGATIONAL CHART (ENC)**



**INDEX OF SINGAPORE ENC**

ENC Name	ENC Title	Latitude	Longitude
SG5C4030	West Jurong Anchorages and Temasek Fairway	1°11'050"N 1°16'300"N	103°36'700"E 103°40'640"E
SG5C4031	Western Approaches to Jurong Island	1°10'150"N 1°12'250"N	103°38'500"E 103°42'530"E
SG5C4032	Sinki Fairway	1°12'250"N 1°16'300"N	103°40'640"E 103°45'580"E
SG5C4033	Tuas Bay, West Jurong Channel and Pesek Basin	1°16'300"N 1°19'050"N	103°37'600"E 103°42'700"E
SG5C4034	East Jurong Channel, Pasir Panjang Terminal and West Keppel Fairway	1°16'300"N 1°18'550"N	103°42'700"E 103°46'356"E
SG5C4035	Western Anchorages, Jong Fairway and Cruise Bay	1°10'900"N 1°16'900"N	103°45'580"E 103°49'425"E
SG5C4036	Raffles Lighthouse to The Sisters	1°09'400"N 1°12'520"N	103°44'200"E 103°50'130"E
SG5C4037	Keppel Harbour, Tanjong Pagar Terminal and Approaches	1°12'520"N 1°16'590"N	103°49'425"E 103°55'340"E
SG5C4038	Johor Strait – Western Part	1°13'700"N 1°31'200"N	103°34'100"E 103°46'300"E
SG5C4039	Western Approaches to Main Strait	1°01'500"N 1°13'700"N	103°31'200"E 103°49'000"E
SG5C4041	Pulau Sebarok to Changi	1°07'400"N 1°19'600"N	103°45'600"E 104°04'700"E
SG5C4043	Kuala Johor and Sungai Johor	1°16'100"N 1°27'500"N	103°59'800"E 104°10'000"E
SG5C4044	Johor Strait – Eastern Part	1°19'600"N 1°31'200"N	103°45'600"E 103°59'800"E

## II NEW PUBLICATIONS

### NEW EDITION DUAL BADGED CHARTS PUBLISHED ON 11<sup>TH</sup> AUGUST 2011

<b>Chart Number</b>	:	4039
<b>Title</b>	:	Indonesia, Singapore and Malaysia Western Approaches To Main Strait
<b>Coverage</b>	:	Lat 01°01'50'N 01°13'70'N Long 103°31'20'E 103°49'00'E
<b>Scale</b>	:	1: 30 000
<b>Date Published</b>	:	11 <sup>th</sup> August 2011
<b>Size of Chart</b>	:	1100.7 x 749.5 mm
<b>Remarks</b>	:	This new edition includes updated surveys covering these areas : <ul style="list-style-type: none"> <li>• South of Tuas View Extension</li> <li>• Shell SBM area</li> <li>• Jong Fairway</li> <li>• Sudong Anchorages</li> <li>• Selat Pauh Anchorage</li> <li>• Sinki Fairway</li> </ul>

The chart of the same number published on 23<sup>rd</sup> July 2009 is superseded.

<b>Chart Number</b>	:	4040
<b>Title</b>	:	Indonesia, Singapore and Malaysia Tuas View To Pulau Sakijang Bendera (S. John's Island)
<b>Coverage</b>	:	Lat 01°07'40'N 01°19'60'N Long 103°34'10'E 103°51'90'E
<b>Scale</b>	:	1: 30 000
<b>Date Published</b>	:	11 <sup>th</sup> August 2011
<b>Size of Chart</b>	:	1100.6 X 749.5 mm
<b>Remarks</b>	:	This new edition includes updated surveys covering these areas : <ul style="list-style-type: none"> <li>• West of Tuas Reclamation</li> <li>• Temasek Fairway</li> <li>• West Jurong Channel</li> <li>• East Jurong Channel</li> <li>• Sudong Anchorages</li> <li>• Shell SBM area</li> <li>• Jong Fairway</li> <li>• Portion of East Keppel Fairway</li> </ul>

The chart of the same number published on 5<sup>th</sup> August 2010 is superseded.

## II NEW PUBLICATIONS

### NEW EDITION DUAL BADGED CHARTS PUBLISHED ON 11<sup>TH</sup> AUGUST 2011

<b>Chart Number</b>	:	4041
<b>Title</b>	:	Singapore and Indonesia Pulau Sebarok To Changi
<b>Coverage</b>	:	Lat 01°07'40'N 01°19'60'N Long 103°46'90'E 104°04'70'E
<b>Scale</b>	:	1: 30 000
<b>Date Published</b>	:	11 <sup>th</sup> August 2011
<b>Size of Chart</b>	:	1100.6 x 749.5 mm
<b>Remarks</b>	:	This new edition includes updated surveys covering these areas :

- Area along East Coast
- Approaches to the Eastern Anchorages
- Eastern Anchorages
- Eastern Fairway
- Eastern Corridor
- Portion of East Keppel Fairway
- Buran Channel
- Jong Fairway
- Shell SBM area

The chart of the same number published on 23<sup>rd</sup> July 2009 is superseded.

### NEW EDITION SINGAPOREAN CHARTS TO BE PUBLISHED ON 22<sup>ND</sup> SEPTEMBER 2011

<b>Chart Number</b>	:	200
<b>Title</b>	:	Malacca Strait – Port Klang To Tanjung Keling
<b>Coverage</b>	:	Lat 02°01'48'N 03°11'99'N Long 100°26'36'E 102°09'91'E
<b>Scale</b>	:	1: 200 000
<b>Date Published</b>	:	22 <sup>nd</sup> September 2011
<b>Size of Chart</b>	:	960.0 x 650.0 mm
<b>Remarks</b>	:	This new edition includes new submarine cables, 40 NM corrections and new contours and depths from BA Chart 3946. The existing chart of the same number published on 30 <sup>th</sup> November 2005 will be superseded.

## II NEW PUBLICATIONS

### NEW EDITION SINGAPOREAN CHARTS TO BE PUBLISHED ON 22<sup>ND</sup> SEPTEMBER 2011

<b>Chart Number</b>	:	502
<b>Title</b>	:	Singapore Strait – Eastern Part
<b>Coverage</b>	:	Lat 01°07'00"N 01°24'61"N Long 103°51'43"E 104°17'31"E
<b>Scale</b>	:	1: 50 000
<b>Date Published</b>	:	22 <sup>nd</sup> September 2011
<b>Size of Chart</b>	:	960·0 x 649·2 mm
<b>Remarks</b>	:	This new edition includes new submarine cables and updated surveys covering these areas: <ul style="list-style-type: none"> <li>• Eastern Anchorages</li> <li>• Eastern Special Purposes D Anchorage</li> <li>• Changi General Purposes Anchorage</li> <li>• Johor Shoal</li> <li>• Eastern Fairway</li> <li>• East Keppel Fairway</li> <li>• South of Pulau Tekong</li> <li>• Around west of Pulau Batam</li> <li>• South of Batu Berhanti</li> </ul>
	:	The existing chart of the same number published on 25 <sup>th</sup> September 2008 will be superseded.

---

### NEW EDITION DUAL BADGED CHARTS TO BE PUBLISHED ON 29<sup>TH</sup> SEPTEMBER 2011

<b>Chart Number</b>	:	4034
<b>Title</b>	:	Port of Singapore – East Jurong Channel, Pasir Panjang Terminal and West Keppel Fairway
<b>Coverage</b>	:	Lat 01°14'50"N 01°18'55"N Long 103°42'70"E 103°48'60"E
<b>Scale</b>	:	1: 10 000
<b>Date Published</b>	:	29 <sup>th</sup> September 2011
<b>Size of Chart</b>	:	1094·3 x 746·3 mm
<b>Remarks</b>	:	This new edition includes updated surveys covering these areas : <ul style="list-style-type: none"> <li>• Pasir Panjang Basin</li> <li>• Pasir Panjang Terminal</li> <li>• East Jurong Channel – area around buoy W3</li> <li>• Tanjong Penjuru – Chevron Jetties</li> <li>• Portion of Sungei Pandan</li> </ul>

The existing chart of the same number published on 14<sup>th</sup> April 2011 will be superseded.

---

## II NEW PUBLICATIONS

### NEW EDITION DUAL BADGED CHARTS TO BE PUBLISHED ON 29<sup>TH</sup> SEPTEMBER 2011

<b>Chart Number</b>	:	4035
<b>Title</b>	:	Port of Singapore – Western Anchorages, Jong Fairway and Cruise Bay
<b>Coverage</b>	:	Lat 01°10-90'N 01°16-90'N Long 103°45-50'E 103°49-54'E
<b>Scale</b>	:	1: 10 000
<b>Date Published</b>	:	29 <sup>th</sup> September 2011
<b>Size of Chart</b>	:	749·4 x 1105·7 mm
<b>Remarks</b>	:	This new edition includes updated surveys covering these areas :

- Shell SBM Area
- Area West of Pulau Sebarok
- East Jurong Channel – area around buoy W3
- Area approaching Berths P18 – P22 of Pasir Panjang Terminal
- Selat Chermin

The existing chart of the same number published on 14<sup>th</sup> April 2011 will be superseded.

---

## II NEW PUBLICATIONS

### PUBLICATION OF SINGAPORE TIDE TABLES YEAR 2012

#### Summary of Publication

This 251-page book contains Tidal Height and Tidal Stream Predictions covering stations in Singapore port waters and along the Malacca and Singapore Straits.

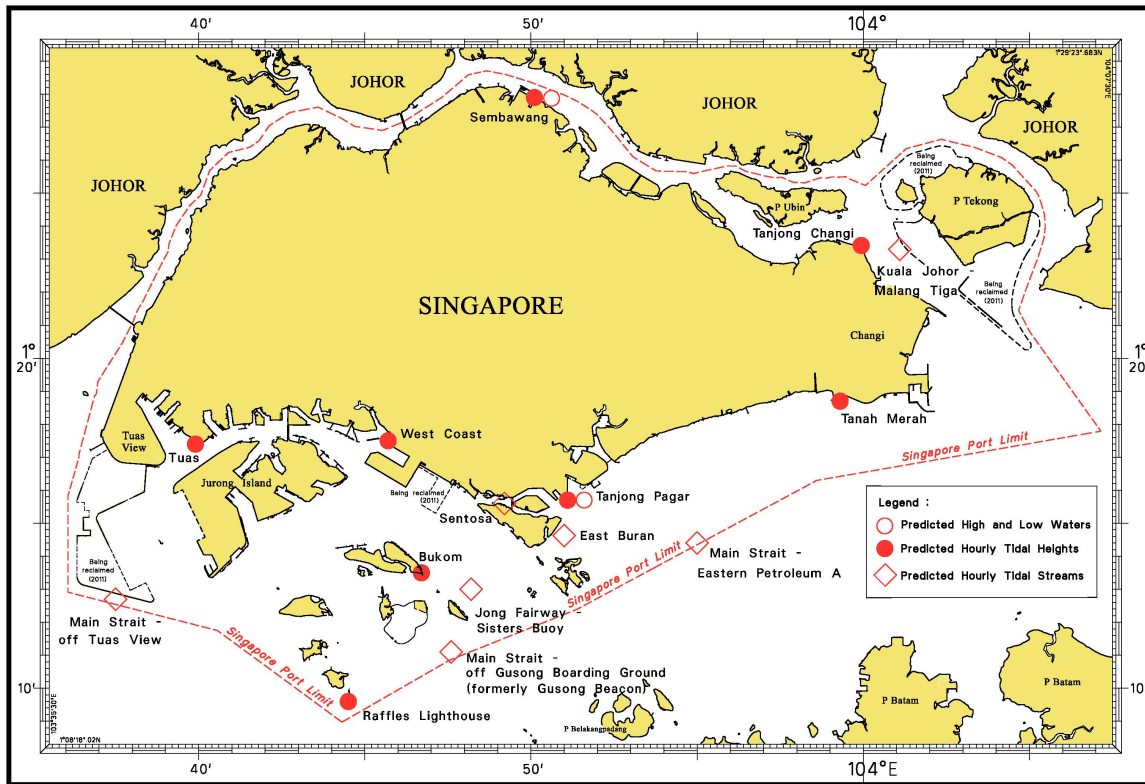
The predictions consist of 5 main segments to facilitate easy reference:

1. **High and Low Water Predictions** at the following stations:
  - a) Tanjong Pagar
  - b) Sembawang
  
2. **Hourly Tidal Height Predictions** at the following stations:
  - a) Tuas
  - b) Raffles Lighthouse
  - c) West Coast
  - d) Bukom
  - e) Tanjong Pagar
  - f) Tanah Merah
  - g) Tanjong Changi
  - h) Sembawang
  - i) Singapore Strait - Horsburgh Lighthouse
  
3. **Hourly Tidal Stream Predictions** at the following stations:
  - a) Jong Fairway – Sisters Buoy
  - b) Main Strait – off Gusong Boarding Ground (formerly Gusong Beacon)
  - c) Sentosa
  - d) East Buran
  - e) Main Strait – Eastern Petroleum A
  - f) Kuala Johor – off Malang Tiga
  
4. **Maximum and Slack Tidal Stream Predictions** at the following stations:
  - a) Malacca Strait – Off The Brothers Light
  - b) Singapore Strait – Selat Phillip
  - c) Singapore Strait – Karang Banteng (Buffalo Rock)
  - d) Singapore Strait - Horsburgh Lighthouse
  
5. **Malacca Strait – High and Low Water Predictions** at the following stations:
  - a) Kedah Pier, Pulau Pinang
  - b) Port Dickson
  - c) Kual Batu Pahat

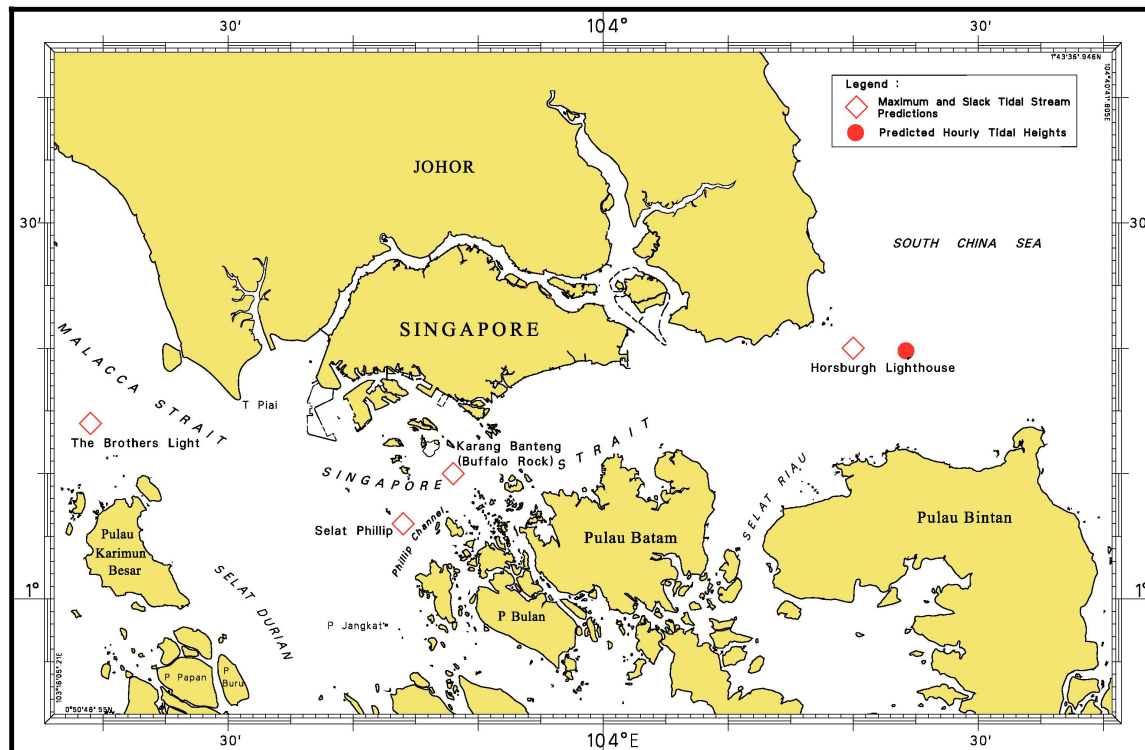
The locations of the above stations are shown in the chartlets below:

## II NEW PUBLICATIONS

### Tidal Prediction Stations within Singapore port waters



### Tidal Prediction Stations in Malacca and Singapore Straits



## II NEW PUBLICATIONS

### Tidal Prediction Stations in Malacca Strait



This publication is available from the following Chart Agents:

1. DPM (Singapore) Pte Ltd
2. E.W. Limer Charts & Publications Pte Ltd
3. Motion Smith

(Please refer Page 173 for details)

## II NOTICES TO MARINERS AND CHART CORRECTIONS

<b>SP1/GSP1</b>	6 Ed 27/1/11 Last NM 68/2011	(Admiralty Notice 34/3756/2011)	<b>NM 72/2011</b>
<b>Insert</b>	 <b>LFl.10s</b>	1°10·21'N	103°59·32'E
<b>Delete</b>	 <b>LFl.10s</b>	1°10·19'N	103°58·62'E
		(Indonesian NM 29/252/2011)	<b>NM 73/2011</b>
<b>Substitute</b>	<b>Fl.3s14m7M</b> for Fl.3s16m13M	1°09·17'N	103°39·37'E
<hr/>			
<b>202</b>	6 Ed 24/9/09 Last NM 60/2011	(HD/DB67/5/2011)	<b>*NM 74/2011</b>
<b>Insert</b>	symbol for racon and legend ' <b>Racon(TK)</b> ' at	1°05·90'N	103°43·20'E
		(Indonesian NM 29/252/2011)	<b>NM 73/2011</b>
<b>Substitute</b>	<b>Fl.3s14m7M</b> for Fl.3s16m13M	1°09·17'N	103°39·37'E
<hr/>			
<b>500</b>	6 Ed 7/10/10 Last NM 59/2011	(HD/DB67/5/2011)	<b>*NM 74/2011</b>
<b>Insert</b>	symbol for racon and legend ' <b>Racon(TK)</b> ' at	1°05·90'N	103°43·20'E
		(Indonesian NM 29/252/2011)	<b>NM 73/2011</b>
<b>Substitute</b>	<b>Fl.3s14m7M</b> for Fl.3s16m13M	1°09·17'N	103°39·37'E
<hr/>			
<b>501</b>	5 Ed 24/9/09 Last NM 59/2011	(HD/DB67/5/2011)	<b>*NM 74/2011</b>
<b>Insert</b>	symbol for racon and legend ' <b>Racon(TK)</b> ' at	1°05·90'N	103°43·20'E
		(Indonesian NM 29/252/2011)	<b>NM 73/2011</b>
<b>Substitute</b>	<b>Fl.3s14m7M</b> for Fl.3s16m13M	1°09·17'N	103°39·37'E
<hr/>			
<b>502</b>	4 Ed 25/9/08 Last NM 46/2011	(Admiralty Notice 34/3756/2011)	<b>NM 72/2011</b>
<b>Insert</b>	 <b>LFl.10s</b>	1°10·21'N	103°59·32'E
<b>Delete</b>	 <b>LFl.10s</b>	1°10·19'N	103°58·62'E

## II TEMPORARY AND PRELIMINARY NOTICES

### **\*(NM 75T/2011) TEMPORARY REMOVAL OF BUOY OFF PULAU PUNGGOL TIMOR**

Mariners are advised that a mooring buoy is temporarily removed at the following location:

1. Name : B3
2. Position : Lat 1°25'50"N Long 103°53'60"E
3. Type : Mooring Buoy
4. Light Characteristics : Fl.Y.2s

**Remarks :** Mariners are advised to navigate with caution when in the vicinity.

**Charts affected:** SP1/GSP1, 4044

**Source :** Maritime and Port Authority of Singapore, Port Marine Notice No. 93/2011.

---

### **(NM 76T/2011) TEMPORARY BUOY MARKING AT TANJUNG RHU PORT KLANG**

Mariners are advised that an isolated danger mark light buoy is temporarily established at the following location:

1. Name : Tanjung Rhu, Port Klang
2. Position : Lat 2°50'28"N Long 101°16'91"E
3. Type : Isolated Danger Buoy
4. Light Characteristics : Fl(2)W.5s

**Remarks :** Mariners are advised to navigate with caution when in the vicinity.

**Charts affected:** 200

**Source :** Marine Department Peninsular Malaysia Notice to Mariners No. 50T/2011.

---

### **(NM 77T/2011) REPLACEMENT OF BUOY AND SALVAGE WORK AT MV B OCEANIC WRECK**

Mariners are advised that an isolated danger mark light buoy has been replaced by a cardinal buoy on the MV B Oceanic wreck. The details are as follows:

1. Name : North Cardinal Mark
2. Position : Lat 1°24'73"N Long 103°07'90"E
3. Name : East Cardinal Mark
4. Position : Lat 1°24'71"N Long 103°08'32"E

**Remarks :** As salvage work is being conducted in the area, Mariners are advised to navigate with caution when in the vicinity.

**Charts affected:** 201, 202 and 500

**Source :** Marine Department Peninsular Malaysia Notice to Mariners No. 54T/2011.

### III NAVIGATIONAL INFORMATION

**\*(NM 78/2011) PORT MARINE NOTICES**

The following PMNs have been shortlisted, as they would be of particular interest to mariners.

These notices can be accessed directly from MPA website:

[http://www.mpa.gov.sg/sites/port\\_and\\_shipping/circulars\\_and\\_notices/port\\_marine\\_notices.page](http://www.mpa.gov.sg/sites/port_and_shipping/circulars_and_notices/port_marine_notices.page)

<b>PMN No.</b>	<b>Subject</b>
100/2011	Sensor Deployment and Testing at Selat Pauh Anchorage.
101/2011	Construction of Changi East Finger Extension.
103/2011	Mooring and unmooring of vessels at mooring buoys off Ayer Merbau, Jurong Island.
105/2011	Construction of sea water intake structure off Jurong Island.

**\*(NM 79/2011) SINGAPOREAN PRINT-ON-DEMAND (POD) CHARTS**

Print-On-Demand (POD) Charts are the most up-to-date paper nautical charts printed for navigational use. These nautical charts are produced in accordance with the International Hydrographic Organisation (IHO) charting specifications. These official nautical charts are continually updated to the latest Notices to Mariners before they are printed and sold to users.

These POD Charts include SP1/GSP1, 200, 201, 202, 500, 501, 502 and 503.

**BENEFITS TO OUR CUSTOMERS**

**Convenience**

Customers need not make numerous hand corrections to the nautical charts before use. In addition the updated POD Charts are more accurate and reliable than offset printed charts with hand corrections.

**Clarity**

Clarity in the presentation of updated information as compared to lithographic printed charts, where in some cases there are several overlapping corrections over existing information.

**Coverage**

The POD Charts cover the Malacca and Singapore Straits, from One Fathom Bank to Horsburgh Lighthouse.

**III**  
**AMENDMENTS TO PUBLICATIONS**

**\*(NM 80/2011) UPDATING OF PUBLICATION "SINGAPORE PORT INFORMATION 2010/2011"**

1. Page 143

**WHARVES AND BERTHS**

**PASIR PANJANG TERMINAL (PSA SINGAPORE TERMINALS)(1°17.2'N, 103°46.1'E)**

Insert the following:

Berth	Length of Berth	*Maintained Depth	Controlling Depth in Approaches
P01	364m	15.0m	15.0m
P02	364m	15.0m	15.0m
P03	364m	15.0m	15.0m
P04	363m	15.0m	15.0m
P05	364m	15.0m	15.0m
P06	326m	15.0m	15.0m
P07	326m	15.0m	15.0m
P08	326m	15.0m	15.0m
P09	326m	15.0m	15.0m
P10	326m	15.0m	15.0m
P11	328m	15.0m	15.0m
P12	394m	15.0m	15.0m
P13	308m	15.0m	15.0m
P14	308m	15.0m	15.0m
P15	332m	16.0m	15.7m
P16	326m	16.0m	15.6m
P17	326m	16.0m	15.8m
P18	326m	16.0m	-
P19	326m	16.0m	16.3m
P20	326m	16.0m	16.3m
P21	360m	16.0m	16.6m
P22	360m	16.0m	16.6m
P23	360m	16.0m	18.1m
P24	360m	16.0m	15.7m
P25	260m	15.0m	15.0m
	100m	16.0m	16.0m
P26	139m	15.0m	15.0m

**Caution Note:**

\*Maintained depths at Pasir Panjang Terminal berths are generally maintained but silting is liable to occur.

Source: HY Code AA1702611

**IV**  
**REPRINT OF RADIO NAVIGATIONAL WARNINGS**

The following Radio Navigational Warnings have been shortlisted, as they would be of particular interest to mariners.

TT173

VESSELS IN EAST JOHOR STRAIT ARE ADVISED TO NAVIGATE WITH CAUTION WHEN NEAR THE PROJECT AREAS OFF PULAU TEKONG, CHANGI AND MALANG PAPAN AS SHALLOW WATER AREAS EXIST. VESSELS ARE ADVISED TO KEEP LOOKOUT FOR TUGS AND BARGES NAVIGATING NEAR THE PROJECT AREAS AND PASSENGER FERRIES CROSSING BETWEEN CHANGI AND PULAU TEKONG AND VICINITY OF PASIR GUDANG.

TT619

DREDGER "ANDROMEDA V" IS CONDUCTING DREDGING OPERATIONS IN COORDINATES:

01°14.890' N 103°58.120' E

01°16.210' N 104°01.630' E

01°16.090' N 104°01.670' E

01°14.680' N 103°58.200' E

VESSELS ARE TO KEEP CLEAR OF THE WORKING VESSEL.

TT753

A SMALL WOODEN CARGO BOAT 10M IN LENGTH SUNK AT 01°15.73'N 103°32.10'E.

TT884

SALVAGE OPERATIONS UNDERWAY IN 01°13.40'N 103°57.75'E. ALL SHIPS ARE REQUESTED TO GIVE A WIDE BERTH OF AT LEAST 5 CABLES WHEN PASSING THE AREA.

TT908

DANGER TO NAVIGATION

2 TUGBOATS ARE REPORTED SUNK AT 01°19.63'N 104°19.28'E

TT931

VESSELS NAVIGATING IN THE SINGAPORE STRAIT ARE REQUESTED NOT TO DIRECT THEIR HIGH INTENSITY SEARCHLIGHTS SKYWARD IN THE VICINITY OF CHANGI AIRPORT TO AVOID DISRUPTION TO AIR NAVIGATION.

TT953

RACON DELTA Q(6) FL 15 SECS AT POSITION LAT 01°03.590'N LONG 103°38.860'E IS REPORTED UNLIT.

TT959

BUFFALO ISOLATED DANGER BUOY FL(2)5s IN 01°09.90'N 103°48.10'E REPORTED UNLIT

TT961

VESSELS INTENDING TO CROSS THE TRAFFIC SEPERATION SCHEME(TSS) OR PRECAUTIONARY AREAS IN THE SINGAPORE STRAIT DURING THE HOURS OF DARKNESS ARE RECOMMENDED TO DISPLAY THE NIGHT SIGNALS CONSISTING OF 3 ALL-ROUND GREEN LIGHTS IN A VERTICAL LINE WITH EFFECT FROM 1ST JULY 2011 AT 0000HRS UTC (0800HRS SINGAPORE LOCAL TIME) AS DETAILED IN MARITIME AND PORT AUTHORITY OF SINGAPORE'S PORT MARINE CIRCULAR, 02 OF 2011 DATED 30 MAY 2011.

TT970

SAFE WATER BUOY LFI .10s IN POSITION 01°03.03'N 103°39.0'E HAS BEEN REMOVED

TT971

TK ISOLATED DANGER BUOY FI(2)5s IN POSITION 01°05.75'N 103°43.60'E HAD BEEN REMOVED FOR MAINTENANCE

**IV**  
**REPRINT OF RADIO NAVIGATIONAL WARNINGS**

TT972

CABLE SHIP 'LODBROG' IS CARRYING OUT CABLE REPAIRS OPERATIONS AT THE FOLLOWING POSITION:

A: 01°18.18'N 104°10.74'E

B: 01°18.57'N 104°11.70'E

C: 01°19.11'N 104°15.02'E

D: 01°18.84'N 104°15.10'E

E: 01°18.33'N 104°12.00'E

F: 01°17.96'N 104°10.80'E

VESSELS ARE ADVISED TO KEEP A LOOKOUT AND GIVE A WIDE BERTH.

TT975

BATU BERHANTI BUOY AT POSITION 01°11.76'N 103°52.51'E FL(2) 5SECS IS REMOVED FOR MAINTAINENCE.

TT976

CABLE SHIP 'LODBROG' IS CARRYING OUT CABLE REPAIRS OPERATIONS AT THE FOLLOWING POSITION:

A: 01°17.700'N 104°09.175'E

B: 01°18.600'N 104°11.700'E

C: 01°20.000'N 104°19.685'E

D: 01°19.700'N 104°11.800'E

E: 01°18.000'N 104°11.300'E

F: 01°17.430'N 104°09.245'E

VESSELS ARE ADVISED TO KEEP A LOOKOUT AND GIVE A WIDE BERTH.

SR154

AN UNIDENTIFIED VESSEL REPORTED SUNK SOUTH WEST OF HORSBURGH AT 01°16.12'N 104°21.50'E.

SR184 (AMENDED 270140UTC)

DANGER TO NAVIGATION

A BARGE WAS REPORTED CAPSIZED IN POSITION 01°24.45'N 104°20.16'E. 4 CREW ON BOARD HAD BEEN RESCUED. VESSEL ARE ADVISED TO KEEP A LOOKOUT AND NAVIGATE WITH CAUTION.

ISSUED BY SINGAPORE PORT OPERATIONS CONTROL CENTRE (as at 21<sup>st</sup> August 2011)

V  
**REPRINT OF ADMIRALTY NOTICES TO MARINERS  
 FOR DUAL BADGED CHARTS**

**These notices can be accessed directly from UKHO Website:**

<http://www.ukho.gov.uk/ProductsandServices/MaritimeSafety/Pages/NMPublic.aspx>

**3414\* SINGAPORE – Main Strait – P.Satumu Southwards – Buoy.**

Source: Maritime and Port Authority of Singapore

Note: This update will be included in New Editions of Charts 4039 and 4040 to be published 11 August 2011.

**Chart 4036** [ previous update New Edition 28/04/2011 ] WGS84 DATUM

Insert  **Fl.Y.2s Satumu 1** 1° 09'·436N., 103° 44'·403E.

**3567\* SINGAPORE – Keppel Harbour – Tanjong Pagar Terminal Southwards and North-eastwards – Marina South Pier Southwards – Depth. Obstructions Rock.**

Source: Maritime and Port Authority of Singapore

**Chart 4037** [ previous update 3258/11 ] WGS84 DATUM

Substitute Depth **18<sub>s</sub>** for depth **19<sub>t</sub>** 1° 15'·459N., 103° 50'·971E.

 **Obstn** for  **Obstn** (a) 1° 16'·167N., 103° 51'·348E.

Delete  **Obstn**, close NNE of: (a) above

 with seabed type, *R* 1° 15'·932N., 103° 51'·867E.

**3630\* SINGAPORE – Jurong Island North-westwards – West Jurong Channel – Berths. Dredged areas. Coastline. Depths. Restricted area.**

Source: Maritime and Port Authority of Singapore

**Chart 4030** [ previous update 2940/11 ] WGS84 DATUM

Insert the accompanying block, showing new berths, dredged areas and amendments to coastline, depths and restricted area, centred on: 1° 16'·790N., 103° 40'·041E.

**Chart 4033** [ previous update 1074/11 ] WGS84 DATUM

Insert the accompanying block, showing new berths, dredged areas and amendments to coastline, depths and restricted area, centred on: 1° 16'·822N., 103° 40'·025E.

**3756\* INDONESIA – Sumatera – Pulau Batam – Batuampar Westwards and Tg Butan South-eastwards – Buoyage.**

Source: Maritime and Port Authority of Singapore

**Chart 4041** [ previous update New Edition 11/08/2011 ] WGS84 DATUM

Insert  **LFl.10s** 1° 10'·21N., 103° 59'·32E.

Delete former  **LFl.10s** 1° 10'·19N., 103° 58'·62E.

V  
**REPRINT OF ADMIRALTY NOTICES TO MARINERS  
 FOR DUAL BADGED CHARTS**

**3810\* SINGAPORE – Sinki Fairway – Pulau Salu North-westwards – Buoy. Beacon. Light-beacon. Automatic Identification System.**




Light List Vol. F, 2010/11, 1685.78

ALRS Vol. 2, 2011/12:(32/11)




Source: Maritime and Port Authority of Singapore

Note: This update has been included in New Editions of Charts 4039 and 4040 published 11 August 2011.

**Chart 4031** [ *previous update 2940/11* ] WGS84 DATUM

Insert	 <b>Fl.Y.5s Banyan</b>	(a)	1° 13' .325N., 103° 41' .586E.
Substitute	 Banyan for  Fl(2)10s11m5M Banyan, Radar reflector and associated Automatic Identification System, AIS, close N of:		(a) <i>above</i>

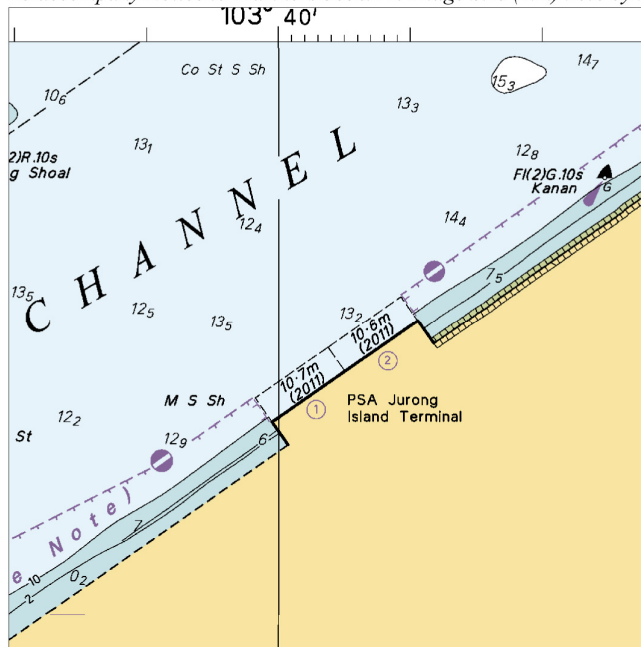
**Chart 4032** [ *previous update 2940/11* ] WGS84 DATUM

Insert	 <b>Fl.Y.5s Banyan</b>	(a)	1° 13' .325N., 103° 41' .586E.
Substitute	 Banyan for  Fl(2)10s11m5M Banyan, Radar reflector and associated Automatic Identification System, AIS, close N of:		(a) <i>above</i>

Updated to Admiralty Notices to Mariners Edition No. 34 of 2011 dated 25<sup>th</sup> August 2011.

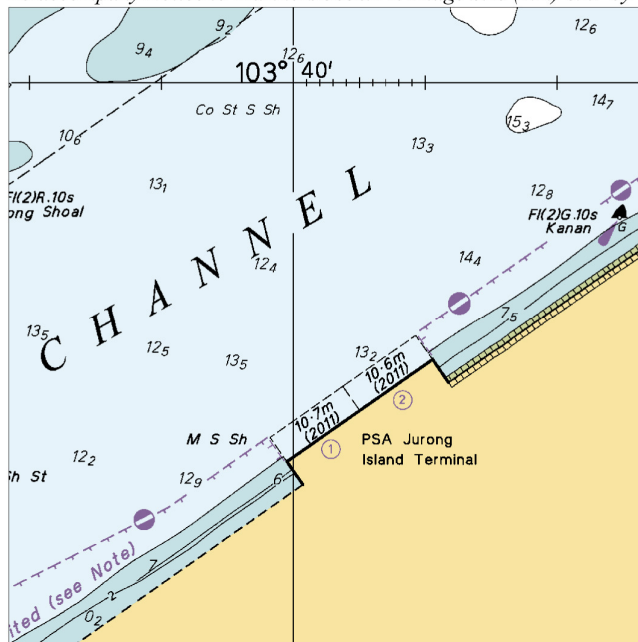
**V**  
**REPRINT OF ADMIRALTY NOTICES TO MARINERS**  
**FOR DUAL BADGED CHARTS**

*To accompany Notice to Mariners 3630/11. Image Size (mm) 90.4 by 90.4*



Block for Chart No 4030

*To accompany Notice to Mariners 3630/11. Image Size (mm) 89.7 by 89.7*



Block for Chart No 4033

**SINGAPORE ELECTRONIC NAVIGATIONAL CHART (ENC) DISTRIBUTORS**

Please approach any of the appointed distributors to purchase the Singapore ENC.

DISTRIBUTOR	ADDRESS	TELEPHONE/FAX NO./EMAIL/WEBSITE
DPM (Singapore) Pte Ltd	1 Maritime Square, #09-72 HarbourFront Centre, Singapore 099253	Tel. No.: +65 6270 4060 Fax No.: +65 6276 3858 Email: sales@dpsmsingapore.com.sg Website: http://www.dpmsingapore.com.sg
MARIS Information Systems (MARIS)	52 Telok Blangah Road #01-06 Telok Blangah House Singapore 058809	Tel. No.: +65 6276 1472 Fax No.: +65 6276 1473 Email: support@maris.sg Website: http://www.maris.no
Maritime Information Systems AS (MARIS)	Danholmen 25, 3128 Notteroy, Norway	Tel. No.: +47 33 30 42 50 Fax No.: +47 33 30 42 51 Email: sales@maris.no Website: http://www.maris.no
Motion Smith	15 Jalan Kilang Barat #08-01/05 Frontech Centre Singapore 159357	Tel. No.: +65 6220 5098 Fax No.: +65 6225 4902 Email: sales@motsmith.com Website: http://www.motsmith.com
Transas Marine Pacific Pte Ltd	Cyber Centre 16 & 18 Jalan Kilang Barat Singapore 159358	Tel. No.: +65 6271 0200 Fax No.: +65 6271 7300 Email: dominic@transas.com.sg Website: http://www.transas.com.sg
Vector Services Pte Ltd	15 West Coast Highway, #02-14A Pasir Panjang Building Singapore 117861	Tel. No.: +65 6777 3602 Fax No.: +65 6777 9203 Email: kwchoy@pacific.net.sg
ChartWorld GmbH	Ruhrstrasse 90, D-22761 Hamburg, Germany	Tel. No.: +49 40 853 58 6942 Fax No.: +49 40 853 58 6949 Email: sales@chartworld.com Website : http://www.chartworld.com
Japan Hydrographic Association Electronic Charts Division	Daiichi Sogo Bldg, 6F 1-6-6, Hanedakuko, Ota-ku, Tokyo 144-0041, Japan	Tel. No.: +81 3 5708 7093 Fax No.: +81 3 5708 7094 Email: shimizu-6kj@jha.jp Website: http://www.jha.or.jp/en/jha/
Jeppesen Norway A/S	P.O Box 212 , N-4371 Egersund, Norway	Tel No.: +47 514 64 700 Fax No: +47 514 64 701 Email: license.marine@jeppesen.com Website : http://www.jeppesen.com
PRIMAR STAVANGER	Lervigsveien 36, P.O Box 60, N-4001 Stavanger, Norway	Tel. No.: +47 51 93 9500 Fax No.: +47 51 93 9501 Email: sales@ecc.no Website : http://www.primar.no
United Kingdom Hydrographic Office	Admiralty Way, Taunton, Somerset TA1 2DN United Kingdom	Tel. No.: +44 1823 337900 Fax No.: +44 1823 284077 Email: ENC.SalesReports@ukho.gov.uk Website: http://www.ukho.gov.uk

**Chart Agents for the Maritime and Port Authority of Singapore  
Nautical Charts and Publications**

Please approach any of the appointed chart agent to purchase the Singapore Nautical Charts and Publications.

CHART AGENT	ADDRESS	TELEPHONE/FAX NO./EMAIL/WEBSITE
DPM (Singapore) Pte Ltd	1 Maritime Square, #09-72 HarbourFront Centre, Singapore 099253	Tel. No.: +65 6270 4060 Fax No.: +65 6276 3858 Email: sales@dpsmsingapore.com.sg Website: http://www.dpmsingapore.com.sg
E.W. Liner Charts & Publications Pte Ltd	102F, Pasir Panjang Road, #08-01, Citilink Warehouse Complex, Singapore 118530	Tel. No.: +65 6323 0773 Fax No.: +65 6323 0775 Email: ewliner@singnet.com.sg Website: http://www.ewliner.com
Motion Smith	15 Jalan Kilang Barat #08-01/05 Frontech Centre Singapore 159357	Tel. No.: +65 6220 5098 (After office hours: +65 8163 9993) Fax No.: +65 6225 4902 Email: sales@motsmith.com Website: http://www.motsmith.com

## HYDROGRAPHIC NOTE - Instructions

1. Mariners are requested to notify the Chief Hydrographer, Maritime and Port Authority of Singapore, when new or suspected dangers to navigation are discovered, changes are observed in aids to navigation or where corrections to nautical publications may be necessary. Reports, which cannot be confirmed or are lacking in certain details should not be withheld.
2. Any ambiguities of time, positioning and depth should be stressed and any firm expectation of being able to check the information provided on a following voyage should be mentioned.
3. Mariners using satellite position fixing systems, eg. GPS, should provide details of equipment and datum used (where applicable). Where bearings (true or magnetic) are taken visually or by radar to fix a position, it should include more than two objects in order to provide a check on its accuracy. A position may also be defined by bearing and distance from a conspicuous object eg. beacon, lighthouse etc.
4. The note should include a tracing or a digital image of the chart used and the details should be clearly marked.
5. Echo sounders frequently register greater depths than the advertised maximum depth for the equipment, eg. a trace appearing at 50 metres may be in fact be 550 metres or even 1050 metres for equipment whose maximum depth is 500 metres. Erroneous depths caused by 2nd transmission error can usually be recognised by the following:
  - (a) the tracing being weaker than normal for the depth registered,
  - (b) the trace appearing to pass through the transmission line,
  - (c) the feathery nature of the trace.
6. Upon receipt of a hydrographic note, a Notice to Mariners may be issued. The sender's vessel or name is quoted as the source unless the same information is also received in foreign Notices to Mariners.
7. Reports of shoals, uncharted dangers and defects in aids to navigation may also be made to the appropriate Singapore Port Operations Control Centre on VHF Channels 10, 12, 14, 68 or 73.

## HYDROGRAPHIC NOTE

To:

Chief Hydrographer  
Maritime and Port Authority of Singapore  
460 Alexandra Road PSA Building #20-00  
Singapore 119963

Tel : (65) 6375 1227  
Fax : (65) 6278 7646  
Email : [hydrographic@mpa.gov.sg](mailto:hydrographic@mpa.gov.sg)

### **Sender's Contact Details** :

Date : .....

Name of Vessel : .....

Address of Sender : .....

Tel : ..... Fax : .....

Email : .....

### **Nature of Observation** :

General Location : .....

Subject : .....

Position : Lat. .... Long. ....

Charts Used : .....

Date & Time of Observation : .....

Details : .....

.....

.....

Attachment : .....

### **Equipment Used** :

Type of Position Fixing : ..... GPS / DGPS ..... Others : .....

Type of Echo Sounder : .....

Name and Signature : .....

Ship's/Company's Stamp : .....