



## SINGAPOREAN NOTICES TO MARINERS

---

SECTION	CONTENT	Page
I	Index of Charts & Publications	1
II	New Publications	6
	Notices to Mariners and Chart Corrections	12
	Temporary and Preliminary Notices	13
III	Navigational Information	14
	Amendments to Publications	15
IV	Reprint of Radio Navigational Warnings	16
V	Extract of Admiralty Notices to Mariners for Dual Badged Charts	17

---

**The monthly Notices to Mariners contain corrective information affecting charts published by the Hydrographic Department, Maritime and Port Authority of Singapore. The information contained in these Notices should be updated on the charts affected. Notices under Section II apply only to the particular Singaporean Chart(s) indicated.**

---

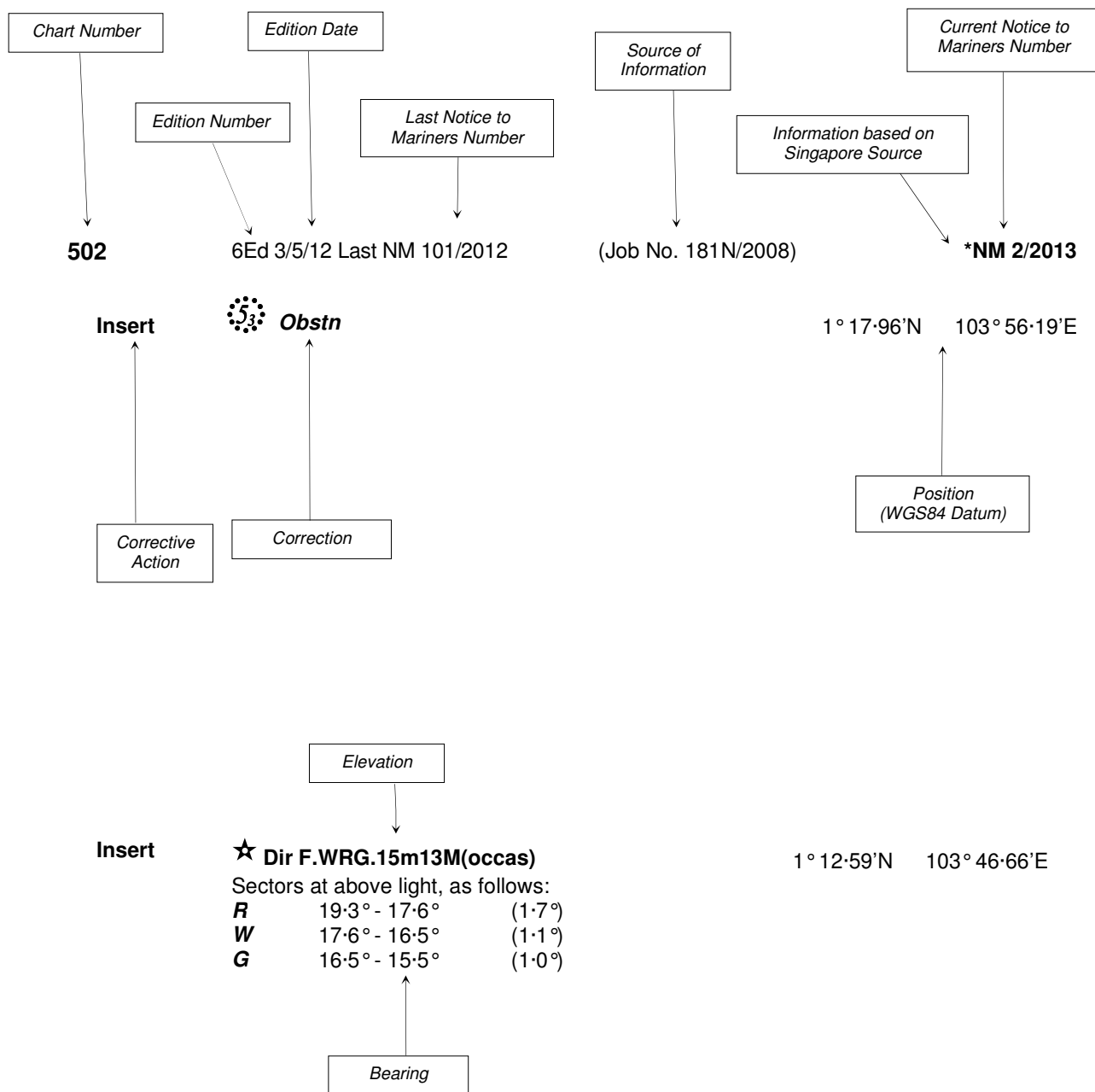
Mariners are requested to notify the Chief Hydrographer, Maritime and Port Authority of Singapore, immediately on the discovery of new dangers or suspected dangers to navigation and of changes or defects in aids to navigation. See Hydrographic Note on back page.

The monthly Singaporean Notices to Mariners can be accessed directly from the MPA website:  
[www.mpa.gov.sg/sites/port\\_and\\_shipping/circulars\\_and\\_notices/singapore\\_notices\\_to\\_mariners\(ntm\).page](http://www.mpa.gov.sg/sites/port_and_shipping/circulars_and_notices/singapore_notices_to_mariners(ntm).page)

Hydrographic Department  
Maritime and Port Authority of Singapore  
460 Alexandra Road  
#20-00 PSA Building  
Singapore 119963  
Tel: (65) 6375 1227  
Fax: (65) 6278 7646

## EXPLANATION OF FORMAT

The elements of a typical chart correction are explained below.



**Notes:**

- a) Notice to Mariners number followed by:  
**T** indicates a Temporary Notice (eg. **\*NM 3T/2013**).  
**P** indicates a Preliminary Notice (eg. **\*NM 4P/2013**).
- b) Bearings are true reckoned clockwise from 000° to 359°; those relating to lights are from seaward.
- c) Heights and elevations are above Mean High Water Springs.

I  
INDEX OF CHARTS AND PUBLICATIONS

INDEX OF AFFECTED CHARTS

DESCRIPTION	NOTICE NO.	PAGE NO.
Index of Singaporean Charts	-	3
Index of Dual Badged Charts	-	4
Index of Singapore Electronic Navigational Chart (ENC)	-	5
New Edition Dual Badged Charts	-	6, 7
New Edition Singaporean Charts	-	8
Singapore Tide Tables Year 2014	-	9 to 11
Singaporean Chart GSP1/SP1	*79	12
Singaporean Chart 201	80	12
Singaporean Chart 202	80	12
Singaporean Chart 500	80	12
Temporary and Preliminary Notices	-	13
Singapore Port Marine Notices	*81	14
Singaporean Print-On-Demand (POD) Charts	*82	14
Amendments to Publications	*83	15
Reprint of Radio Navigational Warnings	-	16
Extract of Admiralty Notices to Mariners for Dual Badged Charts	-	17
Singapore Electronic Navigational Chart (ENC) Distributors	-	18
Chart Agents for the Maritime and Port Authority of Singapore Nautical Charts and Publications	-	19

\*Denotes information are based on Singaporean source.

I  
INDEX OF CHARTS AND PUBLICATIONS

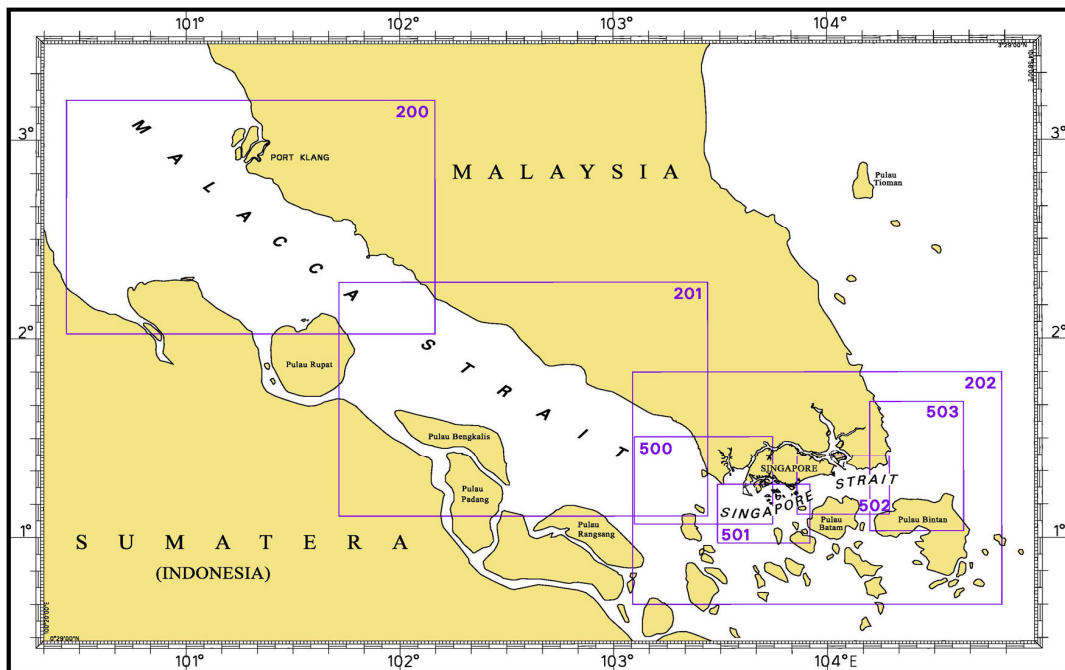
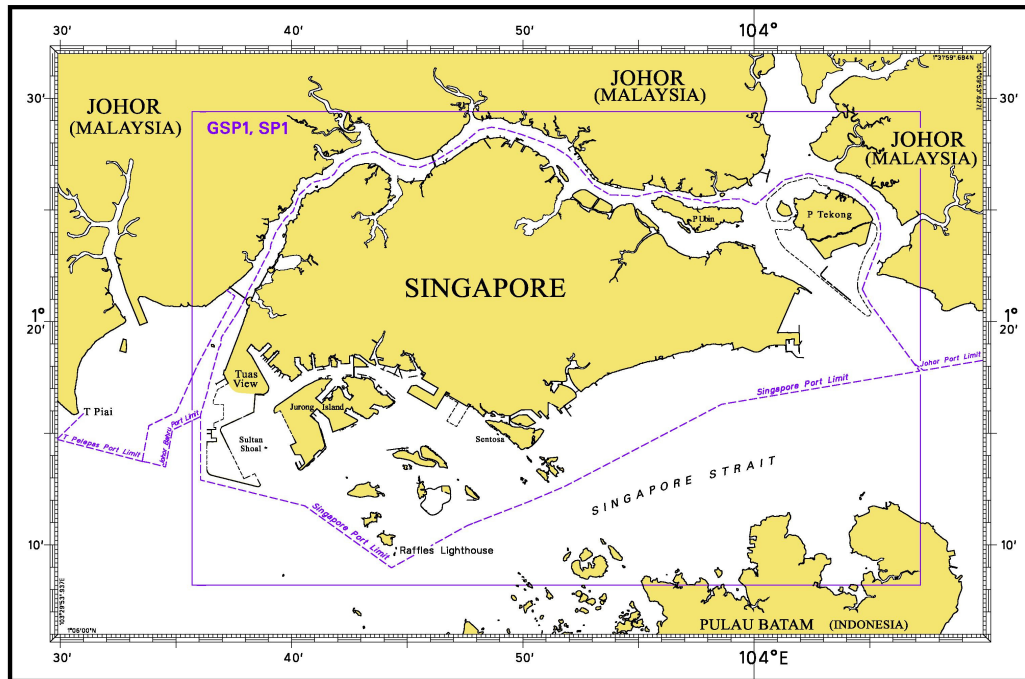
INDEX OF NOTICES

NOTICE NO.	DESCRIPTION	PAGE NO.
-	Index of Singaporean Charts	3
-	Index of Dual Badged Charts	4
-	Index of Singapore Electronic Navigational Chart (ENC)	5
-	New Edition Dual Badged Charts	6, 7
-	New Edition Singaporean Charts	8
-	Singapore Tide Tables Year 2014	9 to 11
*79	Singaporean Chart GSP1/SP1	12
80	Singaporean Chart 201	12
80	Singaporean Chart 202	12
80	Singaporean Chart 500	12
-	Temporary and Preliminary Notices	13
*81	Singapore Port Marine Notices	14
*82	Singaporean Print-On-Demand (POD) Charts	14
*83	Amendments to Publications	15
-	Reprint of Radio Navigational Warnings	16
-	Extract of Admiralty Notices to Mariners for Dual Badged Charts	17
-	Singapore Electronic Navigational Chart (ENC) Distributors	18
-	Chart Agents for the Maritime and Port Authority of Singapore Nautical Charts and Publications	19

\* Denotes information are based on Singaporean source.

# I INDEX OF CHARTS AND PUBLICATIONS

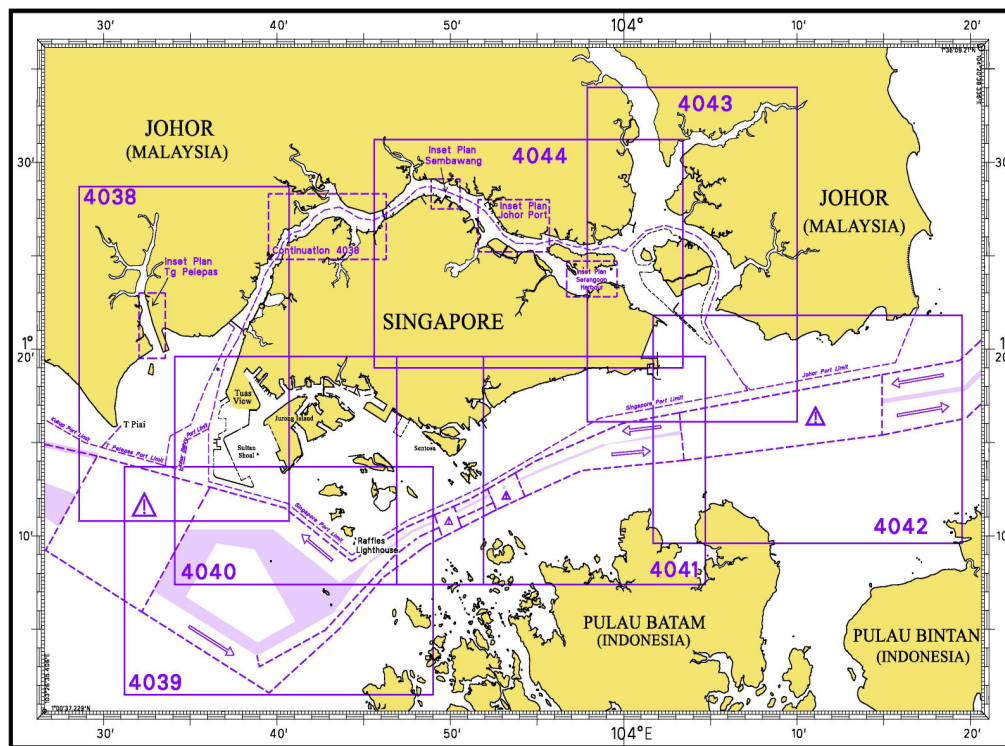
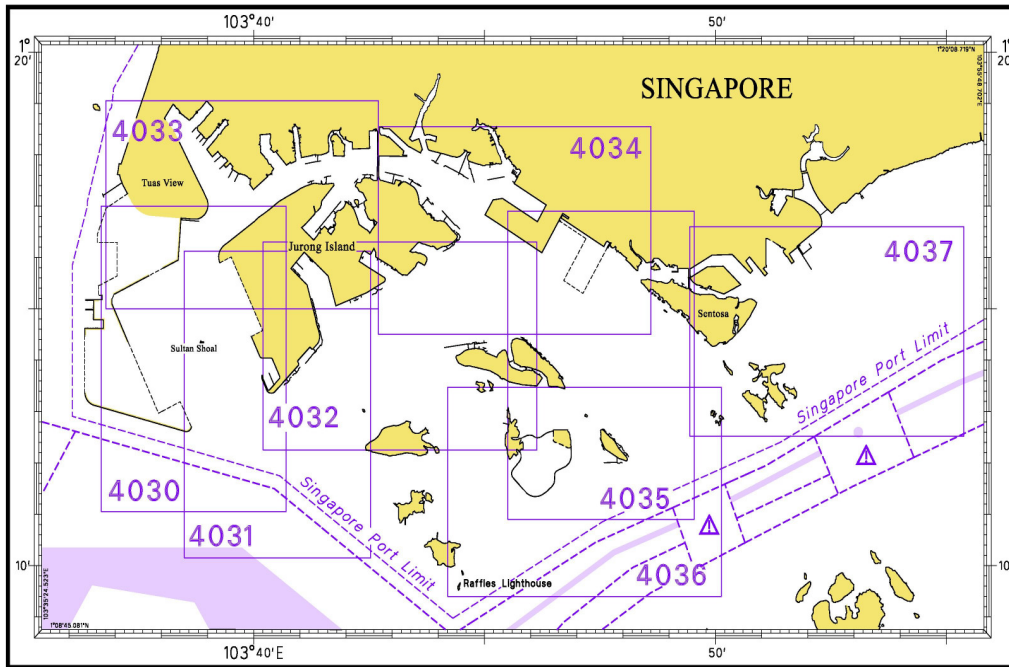
## INDEX OF SINGAPOREAN CHARTS



Notes:  
Updated SINGAPOREAN Charts are available through our Print-On-Demand (POD) Chart Service. For more information, refer to Section III – Navigational Information. These charts can be purchased from our authorised Chart Agents.

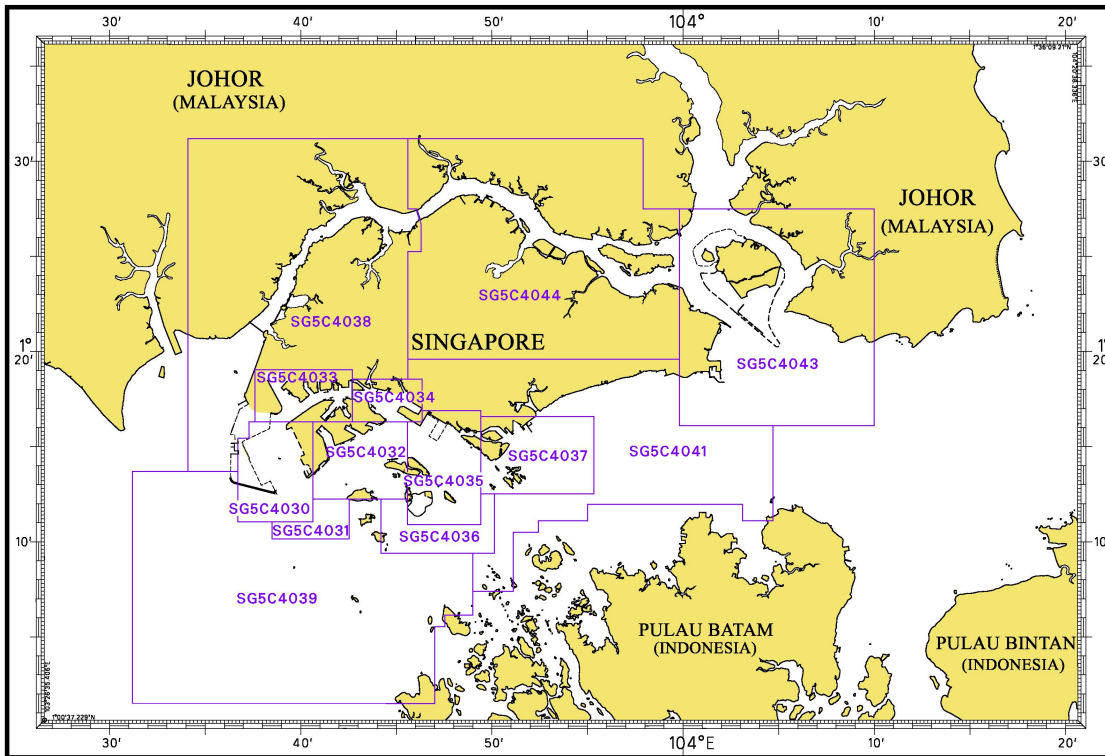
I  
**INDEX OF CHARTS AND PUBLICATIONS**

**INDEX OF DUAL BADGED CHARTS**



# I INDEX OF CHARTS AND PUBLICATIONS

## INDEX OF SINGAPORE ELECTRONIC NAVIGATIONAL CHART (ENC)



## COVERAGE OF SINGAPORE ELECTRONIC NAVIGATIONAL CHART (ENC)

ENC Name	ENC Coverage	ENC Edition
SG5C4030	West Jurong Anchorages and Temasek Fairway	5 <sup>th</sup> Edition (3/05/2012)
SG5C4031	Western Approaches to Jurong Island	5 <sup>th</sup> Edition (3/05/2012)
SG5C4032	Sinki Fairway	7 <sup>th</sup> Edition (3/05/2012)
SG5C4033	Tuas Bay, West Jurong Channel and Pesek Basin	5 <sup>th</sup> Edition (3/05/2012)
SG5C4034	East Jurong Channel, Pasir Panjang Terminal and West Keppel Fairway	11 <sup>th</sup> Edition (11/04/2013)
SG5C4035	Western Anchorages, Jong Fairway and Cruise Bay	13 <sup>th</sup> Edition (25/04/2013)
SG5C4036	Raffles Lighthouse to The Sisters	6 <sup>th</sup> Edition (3/05/2012)
SG5C4037	Keppel Harbour, Tanjong Pagar Terminal and Approaches	7 <sup>th</sup> Edition (25/04/2013)
SG5C4038	Johor Strait – Western Part	5 <sup>th</sup> Edition (3/05/2012)
SG5C4039	Western Approaches to Main Strait	5 <sup>th</sup> Edition (3/05/2012)
SG5C4041	Pulau Sebarok to Changi	7 <sup>th</sup> Edition (9/05/2013)
SG5C4043	Kuala Johor and Sungai Johor	9 <sup>th</sup> Edition (29/08/2013)
SG5C4044	Johor Strait – Eastern Part	9 <sup>th</sup> Edition (29/08/2013)

## II NEW PUBLICATIONS

### NEW EDITION DUAL BADGED CHARTS PUBLISHED ON 29<sup>TH</sup> AUGUST 2013

**Chart Number** : 4043  
**Title** : Malaysia and Singapore  
 Kuala Johor and Sungai Johor  
**Coverage** : Lat 01° 16'·10 N 01° 34'·00 N  
 Long 103° 57'·90 E 104° 10'·00 E  
**Scale** : 1: 30 000  
**Date Published** : 29<sup>th</sup> August 2013  
**Size of Chart** : 748·1 x 1099·6 mm  
**Descriptions** : This new edition includes changes to depths from the latest surveys covering areas around Pulau Tekong, Kuala Johor, north of Pulau Ubin, cable corridor off Tanah Merah and the eastern anchorages.

The existing chart of the same number published on 16<sup>th</sup> August 2012 is superseded.

---

**Chart Number** : 4044  
**Title** : Singapore and Malaysia  
 Johor Strait, Eastern Part  
**Coverage** : Lat 01° 19'·00 N 01° 31'·20 N  
 Long 103° 45'·60 E 104° 03'·40 E  
**Scale** : 1: 30 000  
**Date Published** : 29<sup>th</sup> August 2013  
**Size of Chart** : 1100·5 x 749·5 mm  
**Descriptions** : This new edition includes changes to depths from the latest surveys covering areas at Sembawang Shipyard, Dockyard Reach, north of Pulau Ubin, north of Pulau Tekong and Kuala Johor.

The existing chart of the same number published on 16<sup>th</sup> August 2012 is superseded.

---

## II NEW PUBLICATIONS

### NEW EDITION DUAL BADGED CHARTS TO BE PUBLISHED ON 26<sup>TH</sup> SEPTEMBER 2013

**Chart Number** : 4035  
**Title** : Port of Singapore  
 Western Anchorages, Jong Fairway and Cruise Bay  
**Coverage** : Lat 01° 10' 90 N 01° 16' 90 N  
 Long 103° 45' 50 E 103° 49' 54 E  
**Scale** : 1: 10 000  
**Date Published** : 26<sup>th</sup> September 2013  
**Size of Chart** : 749.4 x 1105.7 mm  
**Descriptions** : This new edition includes changes to depths from the latest surveys covering south and west of Pasir Panjang Terminal, north of Pulau Bukom, west of Pulau Sebarok, Shell SBM and south of Semakau spoil ground.

The existing chart of the same number published on 27<sup>th</sup> September 2012 will be superseded.

---

**Chart Number** : 4038  
**Title** : Malaysia and Singapore  
 Johor Strait, Western Part  
**Coverage** : Lat 01° 10' 80 N 01° 28' 70 N  
 Long 103° 28' 60 E 103° 40' 70 E  
**Scale** : 1: 30 000  
**Date Published** : 26<sup>th</sup> September 2013  
**Size of Chart** : 750.6 x 1100.2 mm  
**Descriptions** : This new edition includes a **new inset plan covering Tuas Mega Yard** and changes to depths from the latest surveys covering Temasek Fairway, West Jurong Channel, Tuas Anchorages, Sudong Anchorage, west and south of Tuas View extension.

The existing chart of the same number published on 5<sup>th</sup> August 2010 will be superseded.

---

## II NEW PUBLICATIONS

### NEW EDITION SINGAPOREAN CHARTS TO BE PUBLISHED ON 26<sup>TH</sup> SEPTEMBER 2013

**Chart Number** : 202  
**Title** : Singapore Strait  
**Coverage** : Lat 00° 40' 00 N 01° 50' 00 N  
 Long 103° 05' 34 E 104° 48' 89 E  
**Scale** : 1: 200 000  
**Date Published** : 26<sup>th</sup> September 2013  
**Size of Chart** : 960.0 x 644.7 mm  
**Descriptions** : This new edition includes changes to depths from the latest surveys covering Singapore waters, submarine cables, updated coastlines of Tuas View Extension, Jurong Island, Marina South and Pulau Tekong.

The existing chart of the same number published on 24<sup>th</sup> September 2009 will be superseded.

---

**Chart Number** : 500  
**Title** : Malacca and Singapore Straits  
 Pulau Pisang To Raffles Lighthouse  
**Coverage** : Lat 01° 04' 05 N 01° 30' 50 N  
 Long 103° 05' 80 E 103° 44' 61 E  
**Scale** : 1: 75 000  
**Date Published** : 26<sup>th</sup> September 2013  
**Size of Chart** : 959.8 x 649.9 mm  
**Descriptions** : This new edition includes changes to depths from the latest surveys covering Temasek and Sinki Fairways, Raffles Shoal, updated coastlines of Jurong Island and submarine cables.

The existing chart of the same number published on 7<sup>th</sup> October 2010 will be superseded.

---

## II NEW PUBLICATIONS

### SINGAPORE TIDE TABLES YEAR 2014 TO BE PUBLISHED ON 4<sup>TH</sup> SEPTEMBER 2013

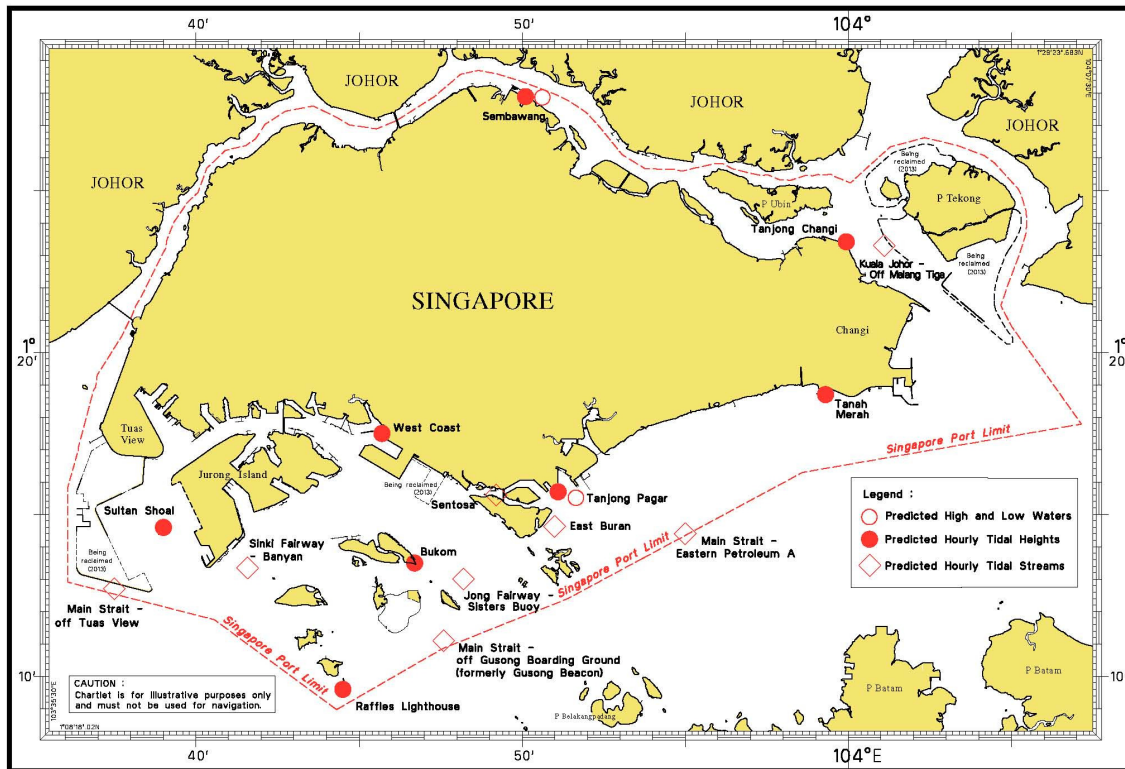
#### Summary of Publication

This 263-page book contains Tidal Height and Tidal Stream Predictions covering stations in Singapore port waters and along the Malacca and Singapore Straits. Two new stations namely Sultan Shoal and Banyan are included in this publication which consists of 5 segments.

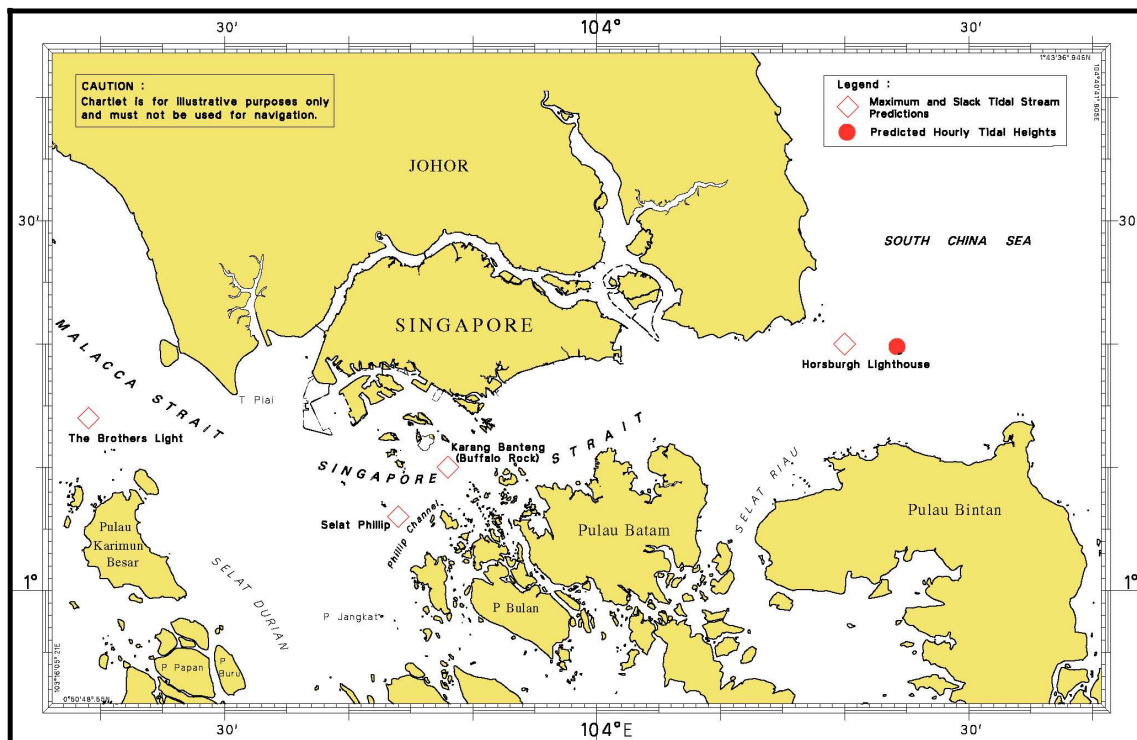
1. **High and Low Water Predictions** at the following stations:
  - a) Tanjong Pagar
  - b) Sembawang
  
2. **Hourly Tidal Height Predictions** at the following stations:
  - a) **Sultan Shoal**
  - b) Raffles Lighthouse
  - c) West Coast
  - d) Bukom
  - e) Tanjong Pagar
  - f) Tanah Merah
  - g) Tanjong Changi
  - h) Sembawang
  - i) Singapore Strait – Horsburgh Lighthouse
  
3. **Hourly Tidal Stream Predictions** at the following stations:
  - a) Main Strait – Off Tuas View
  - b) **Sinki Fairway – Banyan**
  - c) Jong Fairway – Sisters Buoy
  - d) Main Strait – Off Gusong Boarding Ground (formerly Gusong Beacon)
  - e) Sentosa
  - f) East Buran
  - g) Main Strait – Eastern Petroleum A
  - h) Kuala Johor – off Malang Tiga
  
4. **Maximum and Slack Tidal Stream Predictions** at the following stations:
  - a) Malacca Strait – Off The Brothers Light
  - b) Singapore Strait – Selat Phillip
  - c) Singapore Strait – Karang Banteng (Buffalo Rock)
  - d) Singapore Strait – Horsburgh Lighthouse
  
5. **Malacca Strait – High and Low Water Predictions** at the following stations:
  - a) Kedah Pier, Pulau Pinang
  - b) Port Dickson
  - c) Kuala Batu Pahat

The locations of the above stations are shown in the chartlets below:

## II NEW PUBLICATIONS Tidal Prediction Stations within Singapore port waters



## Tidal Prediction Stations in Malacca and Singapore Straits



## II NEW PUBLICATIONS Tidal Prediction Stations in Malacca Strait




This publication is available from the following Chart Agents:


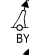
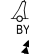
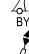

1. Cornes Singapore Pte Ltd
2. DPM (Singapore) Pte Ltd
3. E.W. Liner Charts & Publications Pte Ltd
4. Kelvin Hughes (Singapore) Pte Ltd
5. Motion Smith

Please refer Page 19 for details.




## II NOTICES TO MARINERS AND CHART CORRECTIONS

<b>GSP1/SP1</b>	8 Ed 16/05/13 Last NM 75/2013	(HD/HE025/102/2013)	<b>*NM 79/2013</b>
<b>Insert</b>	 <b>Fl.Y.2s</b>		1° 18·74'N 104° 00·87'E




---

<b>201</b>	4 Ed 7/10/10 Last NM 61/2013	(Marine Department Malaysia Notice No. 83/2013)	<b>NM 80/2013</b>
<b>Delete</b>	#		1° 24·66'N 103° 07·97'E
	 Q		1° 27·20'N 103° 02·70'E
	 Q		1° 26·50'N 103° 05·00'E
	 Q		1° 26·00'N 103° 06·50'E
	 Q		1° 25·30'N 103° 08·20'E
	 Q(3)		1° 24·70'N 103° 09·10'E

---

<b>202</b>	6 Ed 24/09/09 Last NM 35/2013	(Marine Department Malaysia Notice No. 83/2013)	<b>NM 80/2013</b>
<b>Delete</b>	#		1° 24·66'N 103° 07·97'E
	 Q		1° 26·00'N 103° 06·50'E
	 Q		1° 25·30'N 103° 08·20'E
	 Q(3)		1° 24·70'N 103° 09·10'E

---

<b>500</b>	6 Ed 7/10/10 Last NM 19/2013	(Marine Department Malaysia Notice No. 83/2013)	<b>NM 80/2013</b>
<b>Delete</b>	#		1° 24·66'N 103° 07·97'E
	 Q		1° 26·00'N 103° 06·50'E
	 Q		1° 25·30'N 103° 08·20'E
	 Q(3)		1° 24·70'N 103° 09·10'E

---

**II**  
**TEMPORARY AND PRELIMINARY NOTICES**

NIL

### III NAVIGATIONAL INFORMATION

**\*(NM 81/2013) SINGAPORE PORT MARINE NOTICES**

The following Port Marine Notices have been shortlisted, as they would be of particular interest to mariners.

These notices can be accessed directly from MPA website:  
[www.mpa.gov.sg/sites/port\\_and\\_shipping/circulars\\_and\\_notices/port\\_marine\\_notices.page](http://www.mpa.gov.sg/sites/port_and_shipping/circulars_and_notices/port_marine_notices.page)

<b>PMN No.</b>	<b>Subject</b>
106/2013	Sensor deployment and testing at Selat Pauh Anchorage.
107/2013	Construction of new AVA Jetty off Pasir Ris, Serangoon Harbour.

**\*(NM 82/2013) SINGAPOREAN PRINT-ON-DEMAND (POD) CHARTS**

Print-On-Demand (POD) Charts are the most up-to-date paper nautical charts printed for navigational use. These nautical charts are produced in accordance with the International Hydrographic Organisation (IHO) chart specifications. These official nautical charts are continually updated to the latest Notices to Mariners before they are printed and sold to users.

These POD Charts include 200, 201, 202, 500, 501, 502 and 503.

**BENEFITS TO OUR CUSTOMERS**

**Convenience**

Customers need not make numerous hand corrections to the nautical charts before use. In addition the updated POD Charts are more accurate and reliable than offset printed charts with hand corrections.

**Clarity**

Clarity in the presentation of updated information as compared to lithographic printed charts, where in some cases there are several overlapping corrections over existing information.

**Coverage**

The POD Charts cover the Malacca and Singapore Straits, from One Fathom Bank to Horsburgh Lighthouse.

**III**  
**AMENDMENTS TO PUBLICATIONS**

**\*(NM 83/2013) UPDATING OF PUBLICATION "SINGAPORE PORT INFORMATION 2012/2013"**

1. Page 155 – Item 1

**WHARVES AND BERTHS**

**TANJONG PAGAR TERMINAL (PSA SINGAPORE TERMINALS)(1°16.0'N, 103°51.0'E)**

Amend the following:

Berth	Length of Berth	Depth Alongside (Year Surveyed)	Controlling Depth In Approaches
T5	364m	14.8m (2013)	14.8m
T6	350m	13.6m (2013)	13.6m

Source: HD/HY Code B00102313 and B00102013

2. Page 156 – Item 2

**KEPPEL TERMINAL (PSA SINGAPORE TERMINALS)(1°16.0'N, 103°50.0'E)**

Amend the following:

Berth	Length of Berth	Depth Alongside (Year Surveyed)	Controlling Depth In Approaches
K11	136m	14.2m (2013)	15.0m

Source: HD/HY Code B00102013

3. Page 164 – Item 15

**JURONG ISLAND (EXXONMOBIL ASIA PACIFIC PTE LTD)(1°16.8'N, 103°41.5'E)**

Amend the following:

Berth	Length of Berth	Max LOA	Depth Alongside (Year Surveyed)	Controlling Depth In Approaches
Solid Handling Pier	200m	200m	8.5m (2013)	-
	252m	-	11.6m (2013)	-

Source: HD/HY Code E00104213

**IV**  
**REPRINT OF RADIO NAVIGATIONAL WARNINGS**

The following Radio Navigational Warnings have been shortlisted, as they would be of particular interest to mariners.

TT106

NP 1 BUOY FL.R.4S AT POSITION LAT 01° 24.70'N LONG 103° 59.99'E WAS REPORTED ADRIFT.

TT112

GERITA BEACON FI(2)10S IN POSITION LAT 01°13.417'N LONG 103°43.483'E IS REPORTED DAMAGED. VESSELS TO NAVIGATE WITH CAUTION.

TT114

BATU BERHANTI ISOLATED DANGER BUOY FL (2) 5S IS REMOVED FOR MAINTENANCE, VESSELS TO NAVIGATE WITH CAUTION.

TT117

BUFFALO ROCK BUOY FL(2)5S IN THE DEEP WATER ROUTE OF SINGAPORE STRAIT IN POSITION 01°09.85'N 103°48.10'E IS UNLIT.

TT118

HALF SUBMERGED WRECK AND DANGER TO NAVIGATION IS MARKED BY ISOLATED DANGER BUOY AT POSITION LAT 01°26.460'N LONG 104°25. 830'E. MARINERS ARE ADVISED TO NAVIGATE WITH CAUTION WHEN IN THE VICINITY.

TT173

VESSELS IN EAST JOHOR STRAIT ARE ADVISED TO NAVIGATE WITH CAUTION WHEN NEAR THE PROJECT AREAS OFF PULAU TEKONG, CHANGI AND MALANG PAPAN AS SHALLOW WATER AREAS EXIST. VESSELS ARE ADVISED TO KEEP LOOKOUT FOR TUGS AND BARGES NAVIGATING NEAR THE PROJECT AREAS AND PASSENGER FERRIES CROSSING BETWEEN CHANGI AND PULAU TEKONG AND VICINITY OF PASIR GUDANG.

TT961

VESSELS INTENDING TO CROSS THE TRAFFIC SEPARATION SCHEME(TSS) OR PRECAUTIONARY AREAS IN THE SINGAPORE STRAIT DURING THE HOURS OF DARKNESS ARE RECOMMENDED TO DISPLAY THE NIGHT SIGNALS CONSISTING OF 3 ALL-ROUND GREEN LIGHTS IN A VERTICAL LINE WITH EFFECT FROM 1ST JULY 2011 AT 010000UTC (0800SGT) AS DETAILED IN MARITIME AND PORT AUTHORITY OF SINGAPORE'S PORT MARINE CIRCULAR, 02 OF 2011 DATED 30 MAY 2011.

SR 225 (AMENDED 130001Z)

REPORT SIGHTING OF A CAPSIZED WOODEN CRAFT AT LAT 01°14.05'N LONG 104°09.61'E. THE TIP OF THE BOW AND THE ROOF OF THE WHEELHOUSE ARE VISIBLE ABOVE WATER. ALL VESSELS PASSING THE VICINITY ARE REQUESTED TO KEEP A GOOD LOOKOUT, NAVIGATE WITH CAUTION AND REPORT TO SINGAPORE VTIS ON VHF CHANNEL 10 OR VHF CHANNEL 14.

---

ISSUED BY SINGAPORE PORT OPERATIONS CONTROL CENTRE (as at 25<sup>th</sup> August 2013)

V  
**EXTRACT OF ADMIRALTY NOTICES TO MARINERS  
 FOR DUAL BADGED CHARTS**

These notices can also be accessed directly from UKHO Website:

[www.ukho.gov.uk/ProductsandServices/MaritimeSafety/Pages/NMPublic.aspx](http://www.ukho.gov.uk/ProductsandServices/MaritimeSafety/Pages/NMPublic.aspx)

**3438 SINGAPORE – Jurong Island – Banyan Basin, Sungei Jurong and Keppel Harbour – Marina South Southwards – Dredged depths. Wreck.**

Source: Maritime and Port Authority of Singapore

**Chart 4031** [ *previous update 3013/13* ] WGS84 DATUM

Amend dredged depth to, **15.9m (2013)**, centred on: 1° 15'·352N., 103° 41'·240E.

**Chart 4032** [ *previous update 3013/13* ] WGS84 DATUM

Amend dredged depth to, **15.9m (2013)**, centred on: 1° 15'·352N., 103° 41'·240E.

**Chart 4034** [ *previous update 2448/13* ] WGS84 DATUM

Amend dredged depth to, **6.3m (2013)**, centred on: 1° 18'·360N., 103° 43'·574E.

**Chart 4037** [ *previous update 3013/13* ] WGS84 DATUM

Replace  Wk with  Wk 1° 15'·867N., 103° 51'·779E.

**Chart 4040** [ *previous update 3013/13* ] WGS84 DATUM

Replace  Wk with  Wk 1° 15'·87N., 103° 51'·78E.

**Chart 4041** [ *previous update 3013/13* ] WGS84 DATUM

Replace  Wk with  Wk 1° 15'·87N., 103° 51'·78E.

**3808 SINGAPORE – Town Reach – Buoy.**

Source: Maritime and Port Authority of Singapore

**Chart 4038 (panel A, Town Reach)** [ *previous update 3013/13* ] WGS84 DATUM

Move  **FL.Y.4s NEA-LCK**, from: 1° 27'·57N., 103° 43'·59E.  
 to: 1° 27'·37N., 103° 43'·52E.

---

Updated to Admiralty Notices to Mariners Edition No. 35 of 2013 dated 29<sup>th</sup> August 2013.

## MPA ENC DISTRIBUTORS

ENC DISTRIBUTOR	ADDRESS	TELEPHONE/FAX NO./EMAIL/WEBSITE
ChartWorld GmbH	Atlantic Haus, Zirkusweg 1 D-20359 Hamburg Germany	Tel. No.: +49 40 853 58 6942 Fax No.: +49 40 853 58 6949 Email: <a href="mailto:sales@chartworld.com">sales@chartworld.com</a>
ChartWorld Asia Pacific Pte Ltd.	Frontech Centre 07-01, 15 Jalan Kilang Barat, Singapore 159357	Tel No.: +65 6513 3500  Website : <a href="http://www.chartworld.com">http://www.chartworld.com</a> <a href="http://www.ecdis-as-a-service.com">http://www.ecdis-as-a-service.com</a>
DPM (Singapore) Pte Ltd	2 Boon Leat Terrace, #05-02/03 Harbourside 2, Singapore 119844	Tel. No.: +65 6270 4060 Fax No.: +65 6276 3858 Email: <a href="mailto:sales@dpmsingapore.com.sg">sales@dpmsingapore.com.sg</a> Website: <a href="http://www.dpmsingapore.com.sg">http://www.dpmsingapore.com.sg</a>
Maritime Information Systems (MARIS)	52, Telok Blangah Road #01-06, Telok Blangah House, Singapore 058809	Tel. No.: +65 6276 1472 Fax No.: +65 6276 1473 Email: : <a href="mailto:support@maris.sg">support@maris.sg</a> Website: <a href="http://www.maris.no">http://www.maris.no</a>
Maritime Information Systems AS (MARIS)	Danholmen 25, 3128 Notteroy, Norway	Tel. No.: +47 33 30 42 50 Fax No.: +47 33 30 42 51 Email: : <a href="mailto:sales@maris.no">sales@maris.no</a> Website: <a href="http://www.maris.no">http://www.maris.no</a>
Motion Smith	15 Jalan Kilang Barat #08-01/05 Frontech Centre, Singapore 159357	Tel. No.: +65 6220 5098 Fax No.: +65 6225 4902 Email: <a href="mailto:sales@motsmith.com">sales@motsmith.com</a> Website: <a href="http://www.motsmith.com">http://www.motsmith.com</a>
Transas Marine Pacific Pte Ltd	Cyber Centre 16/18 Jalan Kilang Barat Off Jalan Bukit Merah Singapore 159358	Tel. No.: +65 6271 0200 Fax No.: +65 6271 7300 Email: <a href="mailto:navigation.asia@transas.com">navigation.asia@transas.com</a> Website: <a href="http://www.transas.com">http://www.transas.com</a>
Japan Hydrographic Association (Electronic Charts Division)	Daiichi Sogo Bldg, 6F 1-6-6, Hanedakuko, Ota-ku Tokyo 144-0041, Japan	Tel. No.: +81 3 5708 7093 Fax No.: +81 3 5708 7094 Email: <a href="mailto:shimizu-6ki@jha.jp">shimizu-6ki@jha.jp</a> Website: <a href="http://www.jha.or.jp/en/jha/">http://www.jha.or.jp/en/jha/</a>
Jeppesen Norway AS	P.O Box 212 , N-4371 Egersund, Norway	Tel No.: +47 51 46 4700 Fax No: +47 51 46 4701 Email: <a href="mailto:license.marine@jeppesen.com">license.marine@jeppesen.com</a> Website : <a href="http://www.jeppesen.com/marine">http://www.jeppesen.com/marine</a>
PRIMAR STAVANGER	Lervigsveien 36, P.O Box 60, N-4001 Stavanger, Norway	Tel. No.: +47 51 93 9500 Fax No.: +47 51 93 9501 Email: <a href="mailto:sales@ecc.no">sales@ecc.no</a> Website : <a href="http://www.primar.no">http://www.primar.no</a>
The United Kingdom Hydrographic Office	Admiralty Way, Taunton, Somerset, TA1 2DN United Kingdom	Tel. No.: +44 1823 33 7900 Fax No.: +44 1823 28 4077 Emails: <a href="mailto:ENC.SalesReports@ukho.gov.uk">ENC.SalesReports@ukho.gov.uk</a> Website: <a href="http://www.ukho.gov.uk">http://www.ukho.gov.uk</a>

**Chart Agents for the Maritime and Port Authority of Singapore**  
**Nautical Charts and Publications**

Please approach any of the appointed chart agents to purchase the Singapore Nautical Charts and Publications.

<b>CHART AGENT</b>	<b>ADDRESS</b>	<b>TELEPHONE/FAX NO./EMAIL/WEBSITE</b>
Cornes (Singapore) Pte Ltd	10 Anson Road #23-06/6A International Plaza Singapore 079903	Tel. No.: +65 6223 8320 Fax No.: +65 6223 8321 Email: sales9850@cspl.sg Website: <a href="http://www.cornes-charts.com">http://www.cornes-charts.com</a>
DPM (Singapore) Pte Ltd	2 Boon Leat Terrace, #05-02/03 Harbourside 2, Singapore 119844	Tel. No.: +65 6270 4060 Fax No.: +65 6276 3858 Email: sales@dpmsingapore.com.sg Website: <a href="http://www.dpmsingapore.com.sg">http://www.dpmsingapore.com.sg</a>
E.W. Liner Charts & Publications Pte Ltd	102F, Pasir Panjang Road, #08-01, Citilink Warehouse Complex, Singapore 118530	Tel. No.: +65 6323 0773 Fax No.: +65 6323 0775 Email: ewliner@singnet.com.sg Website: <a href="http://www.ewliner.com">http://www.ewliner.com</a>
Kelvin Hughes (Singapore) Pte Ltd	896 Dunearn Road #03-05 Sime Darby Centre Singapore 589472	Tel. No.: +65 6545 9880 Fax No.: +65 6545 8892 Email: leslie.khoo@kelvinhughes.com.sg Website: <a href="http://www.kelvinhughes.com">http://www.kelvinhughes.com</a>
Motion Smith	15 Jalan Kilang Barat #08-01/05 Frontech Centre Singapore 159357	Tel. No.: +65 6220 5098 (After office hours:+65 8163 9993) Fax No.: +65 6225 4902 Email: sales@motsmith.com Website: <a href="http://www.motsmith.com">http://www.motsmith.com</a>

## HYDROGRAPHIC NOTE - Instructions

1. Mariners are requested to notify the Chief Hydrographer, Maritime and Port Authority of Singapore, when new or suspected dangers to navigation are discovered, changes are observed in aids to navigation or where corrections to nautical publications may be necessary. Reports, which cannot be confirmed or are lacking in certain details should not be withheld.
2. Any ambiguities of time, positioning and depth should be stressed and any firm expectation of being able to check the information provided on a following voyage should be mentioned.
3. Mariners using satellite position fixing systems, eg. GPS, should provide details of equipment and datum used (where applicable). Where bearings (true or magnetic) are taken visually or by radar to fix a position, it should include more than two objects in order to provide a check on its accuracy. A position may also be defined by bearing and distance from a conspicuous object eg. beacon, lighthouse etc.
4. The note should include a tracing or a digital image of the chart used and the details should be clearly marked.
5. Echo sounders frequently register greater depths than the advertised maximum depth for the equipment, eg. a trace appearing at 50 metres may be in fact be 550 metres or even 1050 metres for equipment whose maximum depth is 500 metres. Erroneous depths caused by 2nd transmission error can usually be recognised by the following:
  - (a) the tracing being weaker than normal for the depth registered,
  - (b) the trace appearing to pass through the transmission line,
  - (c) the feathery nature of the trace.
6. Upon receipt of a hydrographic note, a Notice to Mariners may be issued. The sender's vessel or name is quoted as the source unless the same information is also received in foreign Notices to Mariners.
7. Reports of shoals, uncharted dangers and defects in aids to navigation may also be made to the appropriate Singapore Port Operations Control Centre on VHF Channels 10, 12, 14, 68 or 73.

## HYDROGRAPHIC NOTE

To:

Chief Hydrographer  
Maritime and Port Authority of Singapore  
460 Alexandra Road PSA Building #20-00  
Singapore 119963

Tel : (65) 6375 1227  
Fax : (65) 6278 7646  
Email : [hydrographic@mpa.gov.sg](mailto:hydrographic@mpa.gov.sg)

### **Sender's Contact Details** :

Date : .....

Name of Vessel : .....

Address of Sender : .....

Tel : ..... Fax : .....

Email : .....

### **Nature of Observation** :

General Location : .....

Subject : .....

Position : Lat. .... Long. ....

Charts Used : .....

Date & Time of Observation : .....

Details : .....

.....

.....

Attachment : .....

### **Equipment Used** :

Type of Position Fixing : ..... GPS / DGPS ..... Others : .....

Type of Echo Sounder : .....

Name and Signature : .....

Ship's/Company's Stamp : .....