



SINGAPOREAN NOTICES TO MARINERS

SECTION	CONTENT	Page
I	Index of Charts & Publications	3
II	New Publications	9
	Notices to Mariners and Chart Corrections	15
	Temporary and Preliminary Notices	16
III	Navigational Information	17
	Amendments to Publications	18
IV	Reprint of Radio Navigational Warnings	20
V	Extract of Admiralty Notices to Mariners for Dual-Badged Charts	21

The monthly Notices to Mariners contain corrective information affecting charts published by the Hydrographic Department, Maritime and Port Authority of Singapore. The information contained in these Notices should be updated on the charts affected. Notices under Section II apply only to the particular Singaporean Chart(s) indicated.

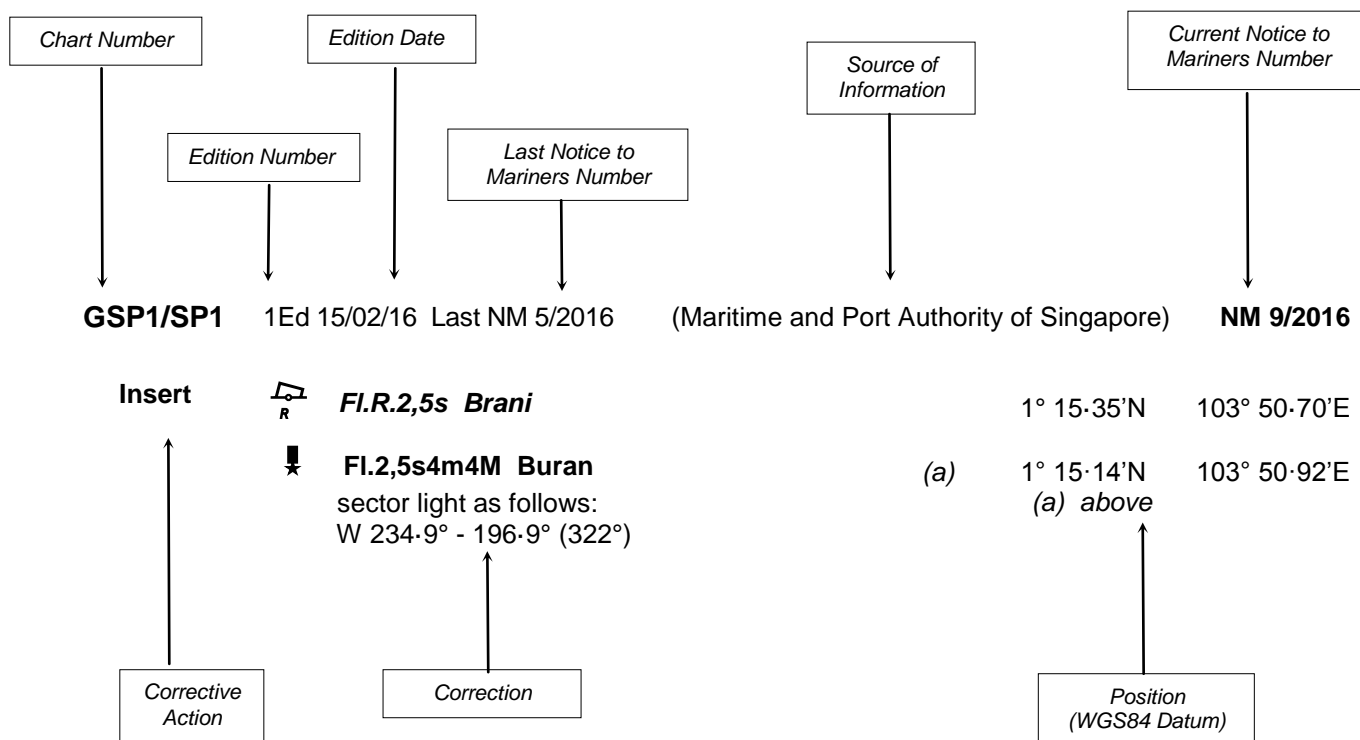
Mariners are requested to notify the Chief Hydrographer, Maritime and Port Authority of Singapore, immediately on the discovery of new dangers or suspected dangers to navigation and of changes or defects in aids to navigation. See Hydrographic Note on back page.

The monthly Singaporean Notices to Mariners can be accessed directly from the MPA website:
<http://www.mpa.gov.sg/web/portal/home/port-of-singapore/circulars-and-notices/singapore-notices-to-mariners-ntm>

Hydrographic Department
Maritime and Port Authority of Singapore
7B Keppel Road
#20-00 Tanjong Pagar Complex
Singapore 089055
Tel: (65) 6325 2027
Fax: (65) 6226 1076
Email: hydrographic@mpa.gov.sg

EXPLANATION OF FORMAT

The elements of a typical chart correction are explained below.



Notes:

- Notice to Mariners number followed by:
T indicates a Temporary Notice (eg. **NM 3T/2016**).
P indicates a Preliminary Notice (eg. **NM 4P/2016**).
- Bearings are true reckoned clockwise from 000° to 359° ; those relating to lights are from seaward.
- Heights and elevations are above Mean High Water Springs.

I
INDEX OF CHARTS AND PUBLICATIONS

INDEX OF AFFECTED CHARTS

DESCRIPTION	NOTICE NO.	PAGE NO.
Index of Singaporean Charts	-	3, 4
Index of Dual-Badged Charts	-	5 to 7
Index of Singapore Electronic Navigational Chart (ENC)	-	8
New Edition Dual Badged Chart	-	9
New Edition Singapore ENC	-	10
New Edition Singaporean Charts	-	11
Singapore Tide Tables 2017	-	12 to 14
Singaporean Chart 201	61	15
Singaporean Chart 500	61, 62	15
Singaporean Chart 501	62	15
Singaporean Chart 503	63	15
Temporary and Preliminary Notices	-	16
Singapore Port Marine Notices/Circulars	*64	17
Singaporean Print-On-Demand (POD) Charts	*65	17
Amendments to Publications	*66	18, 19
Reprint of Radio Navigational Warnings	-	20
Extract of Admiralty Notices to Mariners for Dual-Badged Charts	-	21
Singapore Electronic Navigational Chart (ENC) Distributors	-	22
Chart Distributors for the Maritime and Port Authority of Singapore Nautical Charts and Publications	-	23

*Source: Maritime and Port Authority of Singapore

I
INDEX OF CHARTS AND PUBLICATIONS

INDEX OF NOTICES

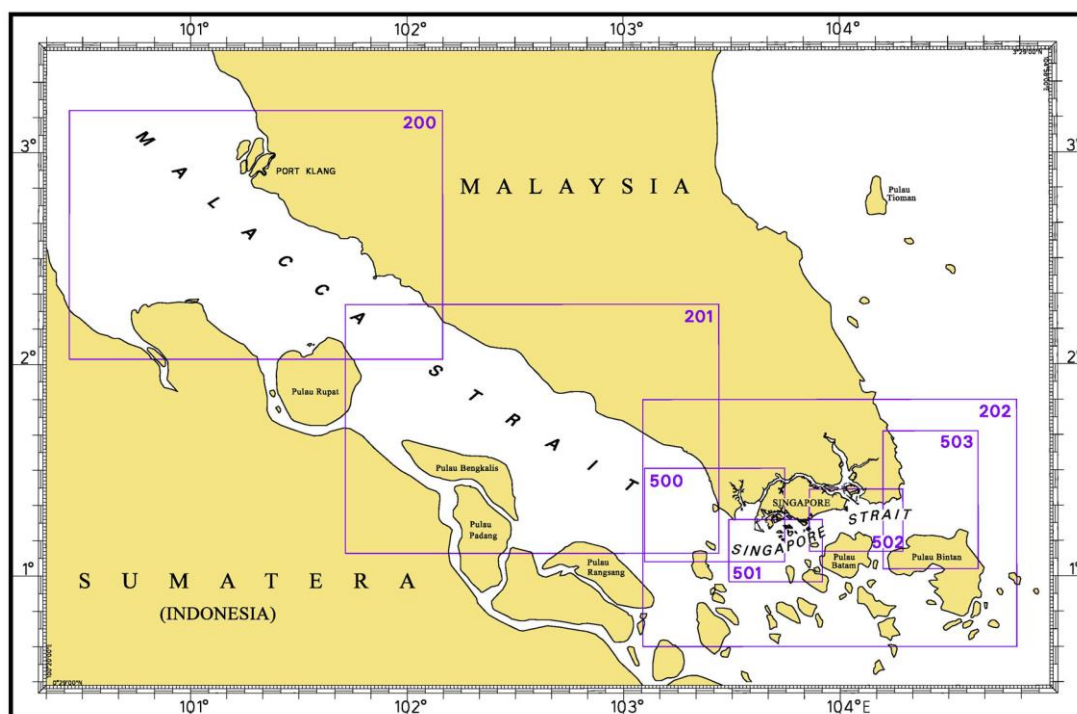
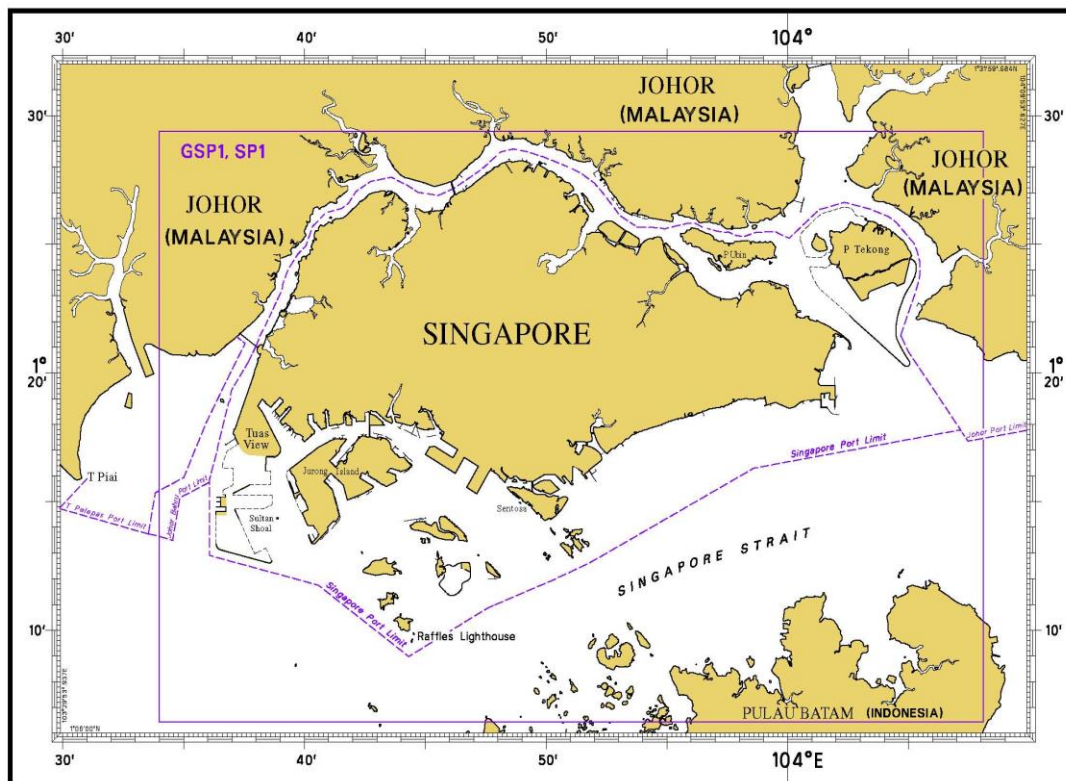
NOTICE NO.	DESCRIPTION	PAGE NO.
-	Index of Singaporean Charts	3, 4
-	Index of Dual-Badged Charts	5 to 7
-	Index of Singapore Electronic Navigational Chart (ENC)	8
-	New Edition Dual Badged Chart	9
-	New Edition Singapore ENC	10
-	New Edition Singaporean Charts	11
-	Singapore Tide Tables 2017	12 to 14
61	Singaporean Chart 201	15
61, 62	Singaporean Chart 500	15
62	Singaporean Chart 501	15
63	Singaporean Chart 503	15
-	Temporary and Preliminary Notices	16
*64	Singapore Port Marine Notices/Circulars	17
*65	Singaporean Print-On-Demand (POD) Charts	17
*66	Amendments to Publications	18, 19
-	Reprint of Radio Navigational Warnings	20
-	Extract of Admiralty Notices to Mariners for Dual-Badged Charts	21
-	Singapore Electronic Navigational Chart (ENC) Distributors	22
-	Chart Distributors for the Maritime and Port Authority of Singapore Nautical Charts	23

* Source: Maritime and Port Authority of Singapore

I

INDEX OF CHARTS AND PUBLICATIONS

INDEX OF SINGAPOREAN CHARTS



Notes:

Updated Singaporean Charts are available through our Print-On-Demand (POD) Chart Service. For more information, refer to Section III – Navigational Information. These charts can be purchased from our Chart Distributors.

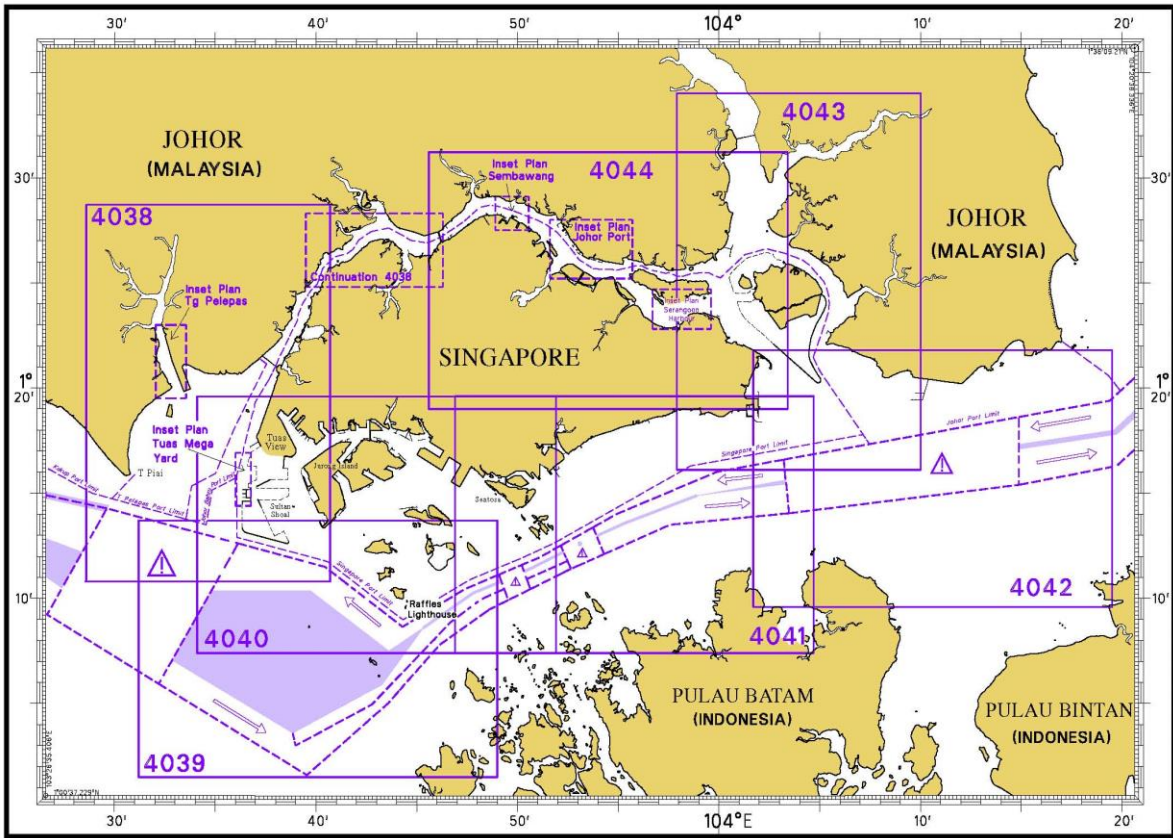
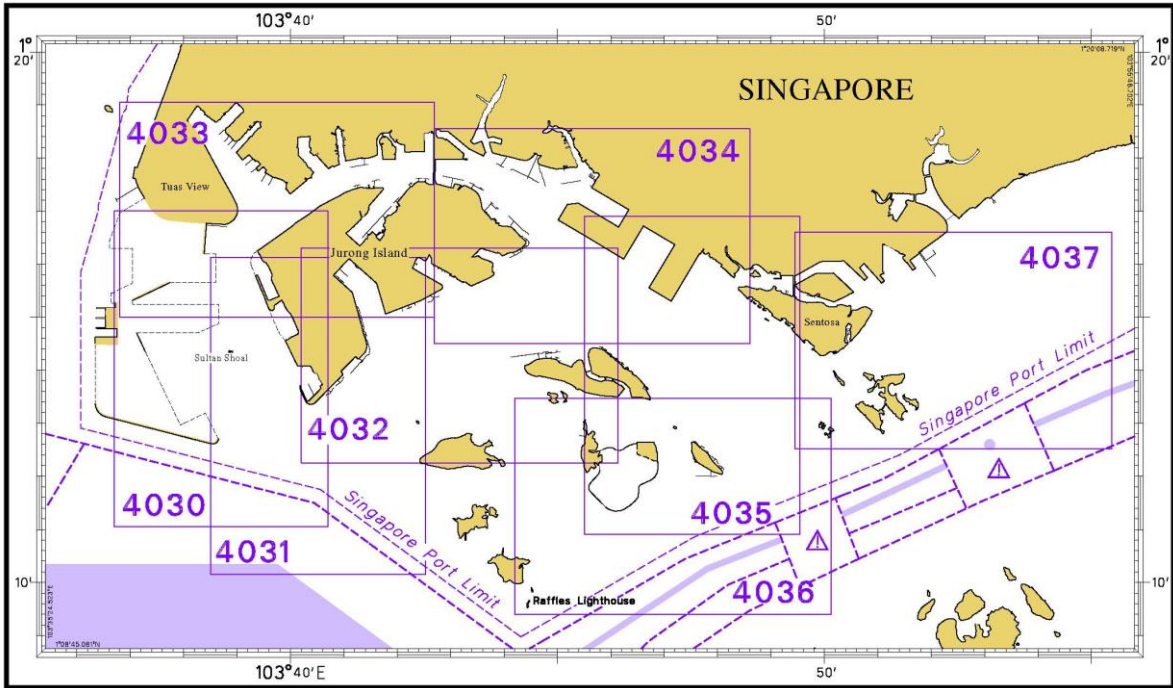
I
INDEX OF CHARTS AND PUBLICATIONS

SINGAPOREAN CHARTS

Chart No.	Chart Title	Scale 1:	Date Published of Latest Edition
GSP1	Anchorage and Aids to Navigation (with Area Reference)	65 000	15/02/2016
SP1	Anchorage and Aids to Navigation	65 000	15/02/2016
200	Malacca Strait - Port Klang to Tanjung Keling	200 000	01/09/2015
201	Malacca Strait - Tanjung Keling to Western Entrance of Singapore Strait	200 000	15/08/2014
202	Singapore Strait	200 000	26/09/2013
500	Malacca and Singapore Straits – Pulau Pisang to Raffles Lighthouse	75 000	26/09/2013
501	Singapore Strait – Western Part	50 000	01/09/2015
502	Singapore Strait - Eastern Part	50 000	01/09/2015
503	South China Sea - Eastern Approaches and Entrance to Singapore Strait	75 000	15/08/2014
-	Charts for Small Craft – Singapore Port Waters and Approaches	10 000 to 200 000	January 2016
1	Symbols Abbreviations Terms and S-57 Objects used on Singapore Nautical and Electronic Navigational Charts. Available at MPA website: http://www.mpa.gov.sg/web/portal/home/publications/charts-symbols-and-abbreviations	-	28/07/2011

I
INDEX OF CHARTS AND PUBLICATIONS

DUAL-BADGED CHARTS



I
INDEX OF CHARTS AND PUBLICATIONS

Chart No.	Chart Title	Scale 1:	Date Published of Latest Edition
4030	Port of Singapore West Jurong Anchorages and Temasek Fairway	10 000	17/03/2016
4031	Port of Singapore Western Approaches to Jurong Island	10 000	17/03/2016
4032	Port of Singapore Sinki Fairway	10 000	04/08/2016
4033	Port of Singapore Tuas Bay, West Jurong Channel and Pesek Basin	10 000	17/03/2016
4034	Port of Singapore East Jurong Channel, Pasir Panjang Terminal and West Keppel Fairway	10 000	04/08/2016
4035	Port of Singapore Western Anchorages, Jong Fairway and Cruise Bay	10 000	28/05/2015
4036	Port of Singapore Raffles Lighthouse to The Sisters	10 000	28/05/2015
4037	Port of Singapore Keppel Harbour, Tanjong Pagar Terminal and Approaches	10 000	28/05/2015
4038	Malaysia and Singapore Johor Strait – Western Part	30 000	25/02/2016
4039	Indonesia, Singapore and Malaysia Western Approaches to Main Strait	30 000	24/04/2014
4040	Singapore, Indonesia and Malaysia Tuas View to Pulau Sakijang Bendera (S. John's Island)	30 000	27/08/2015
4041	Singapore and Indonesia Pulau Sebarok to Changi	30 000	27/08/2015

I
INDEX OF CHARTS AND PUBLICATIONS

DUAL- BADGED CHARTS

Chart No.	Chart Title	Scale 1:	Date Published of Latest Edition
4042	Indonesia, Malaysia and Singapore Changi to Pulau Mungging and Tanjung Buntan to Tanjung Tondang	30 000	24/04/2014
4043	Malaysia and Singapore Kuala Johor and Sungai Johor	30 000	16/06/2016
4044	Singapore and Malaysia Johor Strait - Eastern Part	30 000	16/06/2016

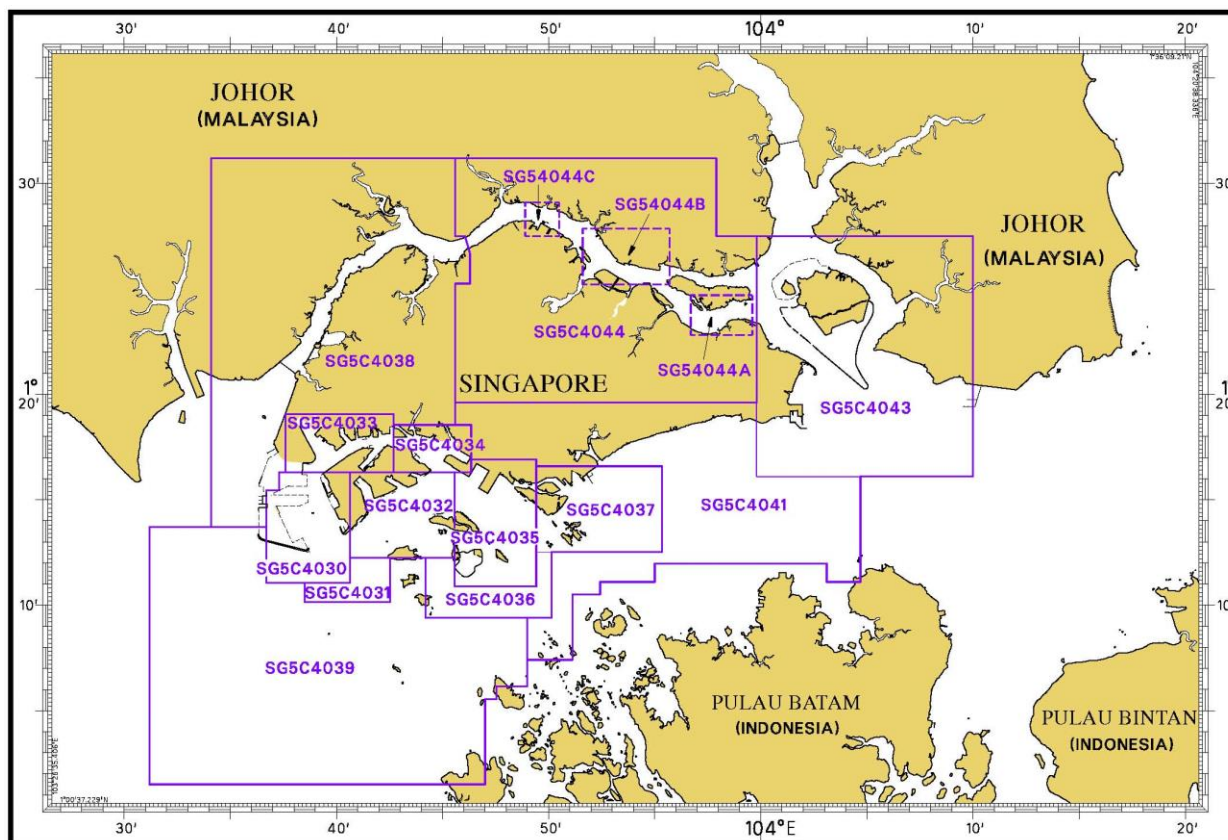
SINGAPOREAN PUBLICATIONS

Item	Title	Date Published of Latest Edition
1	Singapore Tide Tables Year 2016	09/09/2015
2	Singapore Port Information 2016/2017	04/01/2016

I

INDEX OF CHARTS AND PUBLICATIONS

INDEX OF SINGAPORE ELECTRONIC NAVIGATIONAL CHART (ENC)



SINGAPORE ELECTRONIC NAVIGATIONAL CHART (ENC)

ENC Name	ENC Coverage	ENC Edition
SG5C4030	West Jurong Anchorages and Temasek Fairway	9 th Edition (17/03/2016)
SG5C4031	Western Approaches to Jurong Island	8 th Edition (17/03/2016)
SG5C4032	Sinki Fairway	11 th Edition (4/08/2016)
SG5C4033	Tuas Bay, West Jurong Channel and Pesek Basin	9 th Edition (17/03/2016)
SG5C4034	East Jurong Channel, Pasir Panjang Terminal and West Keppel Fairway	14 th Edition (4/08/2016)
SG5C4035	Western Anchorages, Jong Fairway and Cruise Bay	18 th Edition (4/08/2016)
SG5C4036	Raffles Lighthouse to The Sisters	9 th Edition (28/05/2015)
SG5C4037	Keppel Harbour, Tanjong Pagar Terminal and Approaches	9 th Edition (28/05/2015)
SG5C4038	Johor Strait – Western Part	9 th Edition (25/02/2016)
SG5C4039	Western Approaches to Main Strait	8 th Edition (27/08/2015)
SG5C4041	Pulau Sebarok to Changi	9 th Edition (27/08/2015)
SG5C4043	Kuala Johor	12 th Edition (16/06/2016)
SG5C4044	Johor Strait – Eastern Part	12 th Edition (16/06/2016)
SG54044A	Serangoon Harbour	3 rd Edition (16/06/2016)
SG54044B	Pelabuhan Johor (Johor Port)	3 rd Edition (16/06/2016)
SG54044C	Sembawang	3 rd Edition (16/06/2016)

The latest edition of the Singapore ENC covering Singapore Waters and their approaches can be found in our monthly Singaporean Notices to Mariners at MPA website: <http://www.mpa.gov.sg/web/portal/home/port-of-singapore/port-operations/charts-tidal-information-aids-to-navigation-hydrography/nautical-charts/singapore-electronic-navigational-chart-enc>

II NEW PUBLICATIONS

NEW EDITION DUAL BADGED CHART PUBLISHED ON 4TH AUGUST 2016

Chart Number	:	4032
Title	:	Port of Singapore Sinki Fairway
Coverage	:	Lat 01° 12·25' N 01° 16·30' N Long 103° 40·20' E 103° 46·13' E
Scale	:	1 : 10 000
Date Published	:	4 th August 2016
Size of Chart	:	1100.0 x 746.4 mm
Remarks	:	This new edition includes updated bathymetric and topographic surveys covering portion of Banyan Basin, East Jurong Channel, West Keppel Fairway, Sinki Fairway, north of Pulau Busing, around Terumbu Pempang Laut, Terumbu Pempang Tengah, Terumbu Pempang Darat, around Pulau Hantu, around Terumbu Bemban and Terumbu Raya.

The existing chart of the same number published on 15th May 2014 has been superseded.

Chart Number	:	4034
Title	:	Port of Singapore East Jurong Channel, Pasir Panjang Terminal and West Keppel Fairway
Coverage	:	Lat 01° 14·50' N 01° 18·55' N Long 103° 42·70' E 103° 48·60' E
Scale	:	1 : 10 000
Date Published	:	4 th August 2016
Size of Chart	:	1094.3 x 746.3 mm
Remarks	:	This new edition includes updated surveys covering East Jurong Channel, Pasir Panjang Terminal Berths P26 to P41, West Keppel Fairway and north of Pulau Bukom, Sinki Fairway and Selat Pandan.

The existing chart of the same number published on 28th May 2015 has been superseded.

II NEW PUBLICATIONS

NEW EDITION SINGAPORE ENC RELEASED ON 4TH AUGUST 2016

ENC Name : SG5C4032
Location : Sinki Fairway
Coverage : Lat 01° 12' 250' N 01° 16' 300' N
 Long 103° 40' 640' E 103° 45' 580' E
Compilation Scale : 1: 8 000
Date Released : 4th August 2016
Descriptions : This new edition includes updated bathymetric and topographic surveys covering portion of Banyan Basin, East Jurong Channel, Sinki Fairway, north of Pulau Busing, West Keppel Fairway, around Terumbu Pempang Laut, Terumbu Pempang Tengah, Terumbu Pempang Darat and Pulau Hantu.

The existing cell of the same name released on 7th May 2015 has been superseded.

ENC Name : SG5C4034
Location : East Jurong Channel, Pasir Panjang Terminal and West Keppel Fairway
Coverage : Lat 01° 16' 300' N 01° 18' 550' N
 Long 103° 42' 700' E 103° 46' 360' E
Compilation Scale : 1: 8 000
Date Released : 4th August 2016
Descriptions : This new edition includes updated surveys covering East Jurong Channel and vicinity off Retan Darat Channel.

The existing cell of the same name released on 28th May 2015 has been superseded.

II NEW PUBLICATIONS

NEW EDITION SINGAPOREAN CHART TO BE PUBLISHED ON 15th SEPTEMBER 2016

Chart Number	:	202
Title	:	Singapore Strait
Coverage	:	Lat 00° 40·00' N 01° 50·00' N Long 103° 05·34' E 104° 48·89' E
Scale	:	1 : 200 000
Date Published	:	15 th September 2016
Size of Chart	:	960.0 x 644.7 mm
Remarks	:	This new edition includes surveys, submarine cables, updated coastline at Tuas View Extension, Jurong Island, Pasir Panjang, Pulau Tekong and Changi Finger pier.

The existing chart of the same number published on 26th September 2013 will be superseded.

II NEW PUBLICATION

SINGAPORE TIDE TABLES YEAR 2017 TO BE PUBLISHED ON 9TH SEPTEMBER 2016

Summary of Publication



This publication contains Tidal Height and Tidal Stream Predictions covering stations in Singapore Port Waters and along the Straits of Malacca and Singapore.

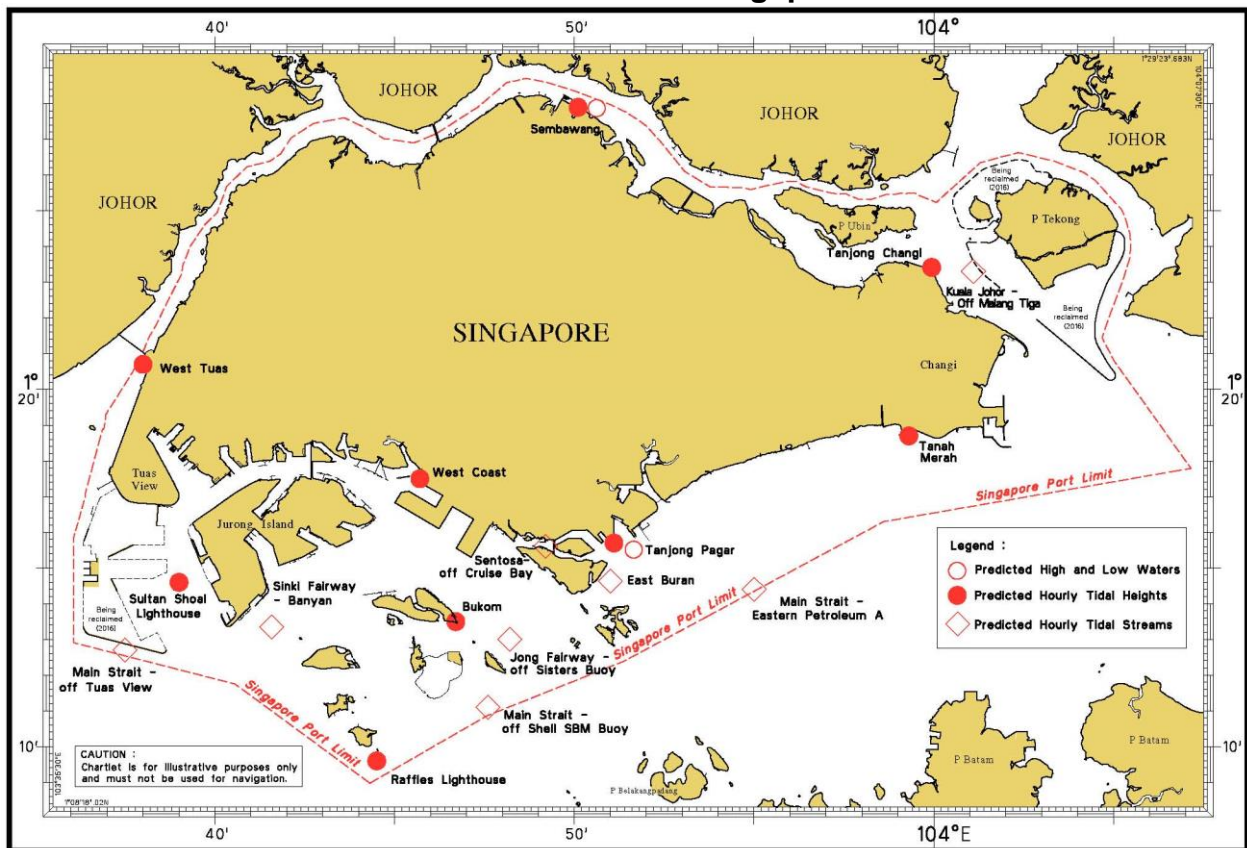
This publication consists of 5 segments.

1. **High and Low Water Predictions** at the following stations:
 - a) Tanjong Pagar
 - b) Sembawang
2. **Hourly Tidal Height Predictions** at the following stations:
 - a) West Tuas
 - b) Sultan Shoal Lighthouse
 - c) Raffles Lighthouse
 - d) West Coast
 - e) Bukom
 - f) Tanjong Pagar
 - g) Tanah Merah
 - h) Tanjong Changi
 - i) Sembawang
 - j) Singapore Strait – Horsburgh Lighthouse
3. **Hourly Tidal Stream Predictions** at the following stations:
 - a) Main Strait – off Tuas View
 - b) Sinki Fairway – Banyan
 - c) Jong Fairway – off Sisters Buoy
 - d) Main Strait – off Shell SBM Buoy
 - e) Sentosa – off Cruise Bay
 - f) East Buran
 - g) Main Strait – Eastern Petroleum A
 - h) Kuala Johor – off Malang Tiga
4. **Maximum and Slack Tidal Stream Predictions** at the following stations:
 - a) Malacca Strait – off Pulau Iyu Kecil Light
 - b) Singapore Strait – Selat Phillip
 - c) Singapore Strait – Karang Banteng (Buffalo Rock)
 - d) Singapore Strait – Horsburgh Lighthouse
5. **Malacca Strait – High and Low Water Predictions** at the following stations:
 - a) Kedah Pier, Pulau Pinang
 - b) Port Dickson
 - c) Kuala Batu Pahat

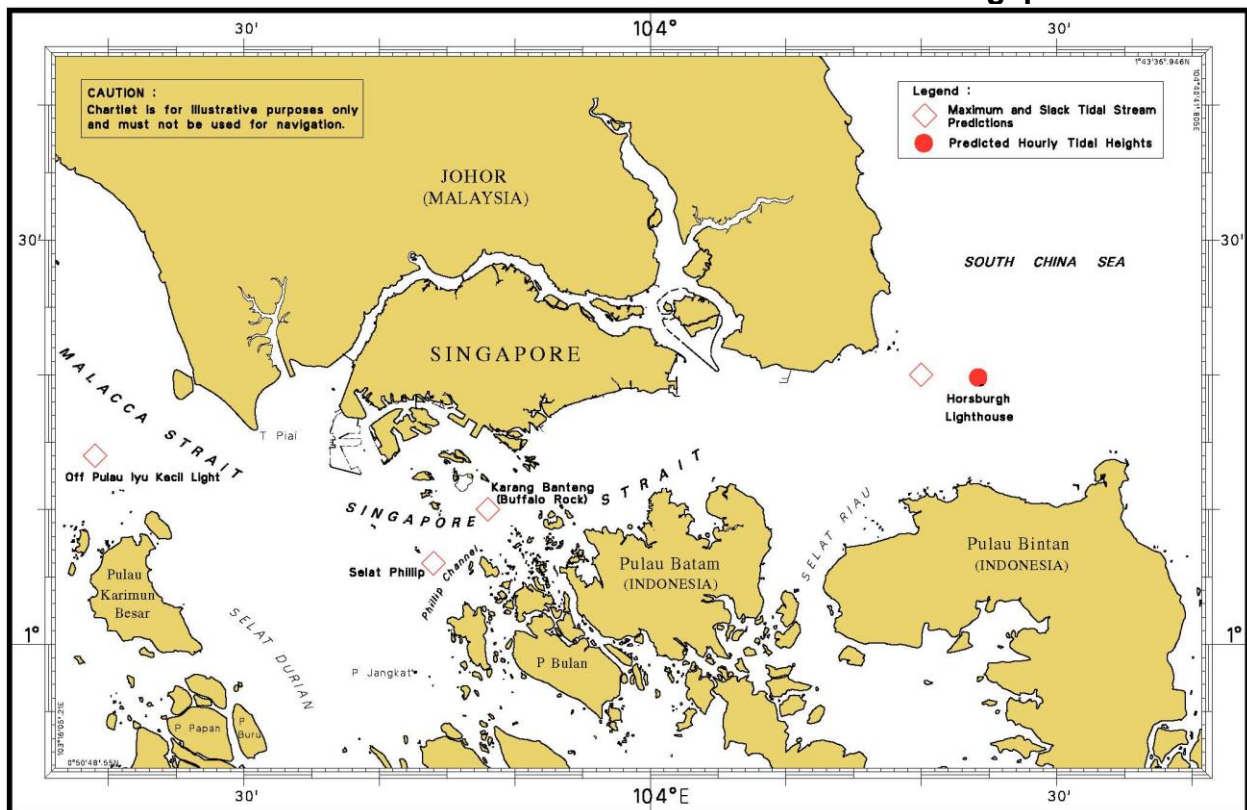
The locations of the above stations are shown in the chartlets below:

II NEW PUBLICATION

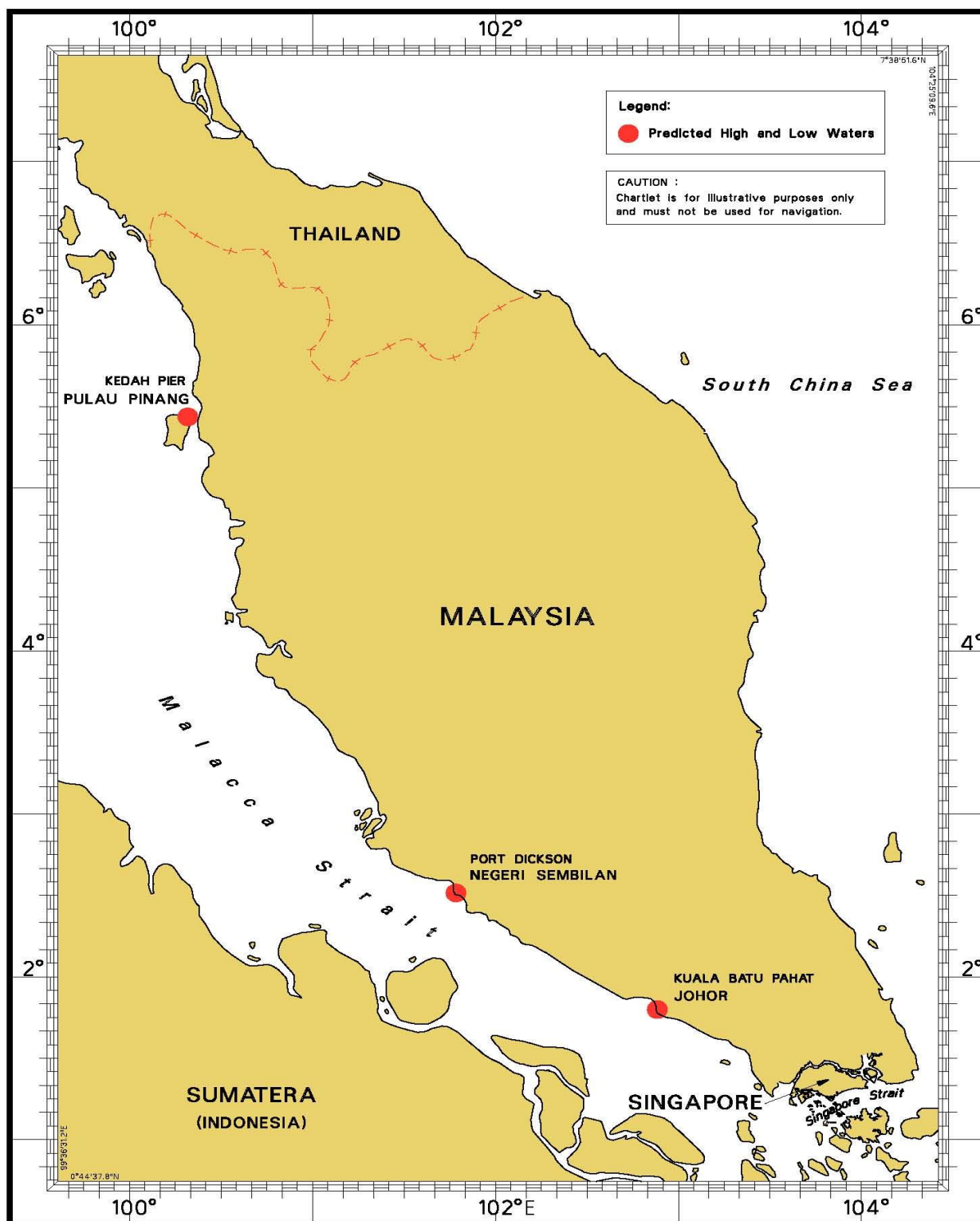
Tidal Prediction Stations within Singapore Port Waters



Tidal Prediction Stations in Straits of Malacca and Singapore



II NEW PUBLICATION Tidal Prediction Stations in Malacca Strait




This publication is available from the following Chart Distributors:

1. Chartco (Singapore) Pte Ltd
2. Cornes (Singapore) Pte Ltd
3. E.W. Liner Charts & Publications Pte Ltd
4. Global Navigation Solutions Pte Ltd
5. Motion Smith

(Please refer Page 23 for details)

II NOTICES TO MARINERS AND CHART CORRECTIONS

201	5Ed 15/08/14 Last NM 86/2015	Indonesian Chart 13A	NM 61/2016
Insert	depth, δ_9 , enclosed by 10m contour	1°07.98'N 103°16.12'E	
<hr/>			
500	7Ed 26/09/13 Last NM 7/2016	Indonesian Chart 13A	NM 61/2016
Insert	depth, δ_9 , enclosed by 10m contour	1°07.98'N 103°16.12'E	
Insert	depth, I_{42} , enclosed by 20m approximate contour	1°04.83'N 103°16.20'E	
	Indonesian Notice No. 32/377/2016	NM 62/2016	
Replace	radar beacon, Racon(K) with radar beacon, Racon(TK)	1°05.90'N 103°43.20'E	
<hr/>			
501	7Ed 01/09/15 Last NM 24/2016	Indonesian Notice No. 32/377/2016	NM 62/2016
Replace	radar beacon, Racon(K) with radar beacon, Racon(TK)	1°05.90'N 103°43.20'E	
<hr/>			
503	5Ed 15/08/14 Last NM 32/2016	Indonesian Chart 42	NM 63/2016
Insert		1°13.98'N 104°32.03'E	
<hr/>			

II
TEMPORARY AND PRELIMINARY NOTICES

NIL

III NAVIGATIONAL INFORMATION

*(NM 64/2016) SINGAPORE PORT MARINE NOTICES/CIRCULARS

The Port Marine Notices/Circulars shortlisted below would be of particular interest to mariners. Details and complete list of Port Marine Notices/Circulars are available at this link: <http://www.mpa.gov.sg/web/portal/home/port-of-singapore/circulars-and-notice>

PMN No.	Subject
86/2016	Dredging works at Temasek Fairway
87/2016	Maintenance dredging work in Sungei Pandan

*(NM 65/2016) SINGAPOREAN PRINT-ON-DEMAND (POD) CHARTS

Print-On-Demand (POD) Charts are the most up-to-date paper nautical charts printed for navigational use. These nautical charts are produced in accordance with the International Hydrographic Organisation (IHO) chart specifications. All Singaporean Charts are continually updated to the latest Notices to Mariners before they are printed and sold to users.

These POD Charts include GSP1, SP1, 200, 201, 202, 500, 501, 502 and 503.

BENEFITS TO OUR CUSTOMERS

Convenience

Customers need not make numerous hand corrections to the nautical charts before use. In addition the updated POD Charts are more accurate and reliable than offset printed charts with hand corrections.

Clarity

Clarity in the presentation of updated information as compared to non-POD printed charts, where in some cases there are several overlapping corrections over existing information.

Coverage

The POD Charts cover the Straits of Malacca and Singapore, from One Fathom Bank to Horsburgh Lighthouse.

*Source: Maritime and Port Authority of Singapore

III AMENDMENTS TO PUBLICATIONS

*(NM 66/2016) UPDATING OF PUBLICATION “SINGAPORE PORT INFORMATION 2016/2017”

LEAST DEPTHS OF ANCHORAGES

1. Page 104

B WESTERN SECTOR

Amend the following:

No.	Anchorage	Depth (m)	Latitude (N) Longitude (E)
19	Western Petroleum A (AWPA)	20.6	1°14.165' 103°48.266'

CONTROLLING DEPTHS OF NAVIGATIONAL CHANNELS AND FAIRWAYS

2. Page 109

Amend the following:

LOCATIONS		DEPTHS (m)	REMARKS
Approaches to VLCC Berth Universal Terminal (in Sinki Fairway)		21.3	
Sinki Fairway	Selat Sinki (dredged channel)	18.1	Note: A high spot of 11.4m exists (approximately 200.2° x 616m from Pandan Beacon)
	Selat Pandan	14.4	Note: A high spot of 14.8m exists (approximately 291.2° x 469m from Pandan Beacon)

WHARVES AND BERTHS

3. Page 168 and 169

JURONG TERMINAL (JURONG PORT PTE LTD) (1°18.3'N, 103°43.1'E)

Amend the following:

Berth	Length of Berth Box	Max LOA	Depth Alongside (Year Surveyed)	Controlling Depth In Approaches
J4	184m	-	12.6m (2016)	13.2m
J4A	120m	-	13.3m (2016)	12.1m
J6	183m	-	9.2m (2016)	13.2m
J7	183m	-	9.8m (2016)	13.2m
J12A	160m	-	10.8m (2016)	12.0m

III AMENDMENTS TO PUBLICATIONS

4. Page 169

JURONG TERMINAL (PULAU DAMAR LAUT) (JURONG PORT PTE LTD)
(1°18.1'N, 103°42.9'E)

Amend the following:

Berth	Length of Berth Box	Max LOA	Depth Alongside (Year Surveyed)	Controlling Depth In Approaches
J22	189m	-	12.3m (2016)	13.2m
J23	215m	-	12.4m (2016)	13.2m
J25	312m	-	12.4m (2016)	12.8m

5. Page 207

MPA APPOINTED ELECTRONIC NAVIGATIONAL CHART (ENC) DISTRIBUTORS

Delete the following:

DISTRIBUTOR	ADDRESS	TELEPHONE/FAX NO./EMAIL/WEBSITE
Jeppesen Norway AS	P.O Box 212 , N-4371 Egersund Norway	Tel: +47 51 46 4700 Fax: +47 51 46 4701 Email: license.marine@jeppesen.com Website : http://www.jeppesen.com/marine

Insert the following:

DISTRIBUTOR	ADDRESS	TELEPHONE/FAX NO./EMAIL/WEBSITE
C-MAP Norway AS	Hovlandsveien 52, 4374 Egersund, Norway	Tel: +47 51 46 4700 Fax: +47 51 46 4701 Email: enc@c-map.com Website : http://www.c-map.com

*Source: Maritime and Port Authority of Singapore

IV REPRINT OF RADIO NAVIGATIONAL WARNINGS

The following Radio Navigational Warnings have been shortlisted, as they would be of particular interest to mariners.

TT175

VESSELS IN EAST JOHOR STRAIT ARE ADVISED TO NAVIGATE WITH PARTICULAR ALERTNESS AND CAUTION WHEN NEAR THE PROJECT AREAS OFF PULAU TEKONG, CHANGI AND MALANG PAPAN AS SHALLOW WATER AREAS EXIST. VESSELS ARE REMINDED TO PROCEED AT A SAFE SPEED AND MAINTAIN A PROPER LOOK-OUT, PARTICULARLY FOR TUGS AND BARGES NAVIGATING NEAR THE PROJECT AREAS AND PASSENGER FERRIES CROSSING BETWEEN CHANGI AND PULAU TEKONG AND VICINITY OF PASIR GUDANG.

TT273

ALL VESSELS ARE ADVISED TO NAVIGATE WITH CAUTION, COMPLY WITH THE INTERNATIONAL COLLISION REGULATIONS, MAINTAIN VHF RADIO WATCH AND LISTEN TO TRAFFIC INFORMATION WHEN NAVIGATING IN THE SINGAPORE STRAIT AND PORT WATERS. MARINERS ARE ALSO ADVISED TO KEEP A GOOD LOOKOUT OF FREQUENT FERRIES CROSSING THE SINGAPORE STRAIT.

TT349

REPORT OF SUNKEN WOODEN BOAT ON 23 AUG 2016 AT 0900HRS IN POSITION LAT 01-15.89N LONG 104-00.72E IN THE WESTBOUND LANE OF SINGAPORE TSS. VESSELS IN THE VICINITY ARE ADVISED TO NAVIGATE WITH CAUTION.

TT350

REPORTS ON VISIBILITY IN THE SINGAPORE STRAIT AND PORT WATERS ARE REDUCED BY HAZE. VISIBILITY RANGE IS LESS THAN 5 NAUTICAL MILES. ALL VESSELS ARE ADVISED TO NAVIGATE WITH EXTRA CAUTION.

TT351

CS ASEAN EXPLORER WILL CARRY OUT CABLE FAULT REPAIR ON JAKABARE SEG B4 AND B5 OPN1 CABLE SYSTEM IN THE TSS WESTBOUND LANE SOUTH OF PSBG (VTIS EAST SECTOR) FROM 30 AUG 2016 TO 7 SEP 2016

POSITION OF COORDINATES:

POINT 1	01-17.065'N	104-08.873'E	
POINT 2	01-16.606'N	104-09.590'E	
POINT 3	01-16.980'N	104-09.324'E	EST. FAULT LOCATION
X	01-18.500'N	104-09.700'E	STANDBY OUTSIDE TSS FOR THE NIGHT

ALL VESSELS ARE ADVISED TO KEEP A SHARP LOOKOUT. NAVIGATE WITH CAUTION AND GIVE A WIDE BERTH WHEN PASSING THE OPERATION AREA.

TT961

VESSELS INTENDING TO CROSS THE TRAFFIC SEPARATION SCHEME (TSS) OR PRECAUTIONARY AREAS IN THE SINGAPORE STRAIT DURING THE HOURS OF DARKNESS ARE RECOMMENDED TO DISPLAY THE NIGHT SIGNALS CONSISTING OF 3 ALL ROUND GREEN LIGHTS IN A VERTICAL LINE AS DETAILED IN MARITIME AND PORT AUTHORITY OF SINGAPORE'S PORT MARINE CIRCULAR, 02 OF 2011 DATED 30 MAY 2011.

SR123 (AMENDED ON 200330Z)

SEA ROBBERIES ARE REPORTED IN THE SINGAPORE STRAIT, ALL VESSELS ARE REMINDED TO MAINTAIN A PROPER LOOK-OUT AND REPORT ANY SUSPICIOUS CRAFT TO VTIS SINGAPORE.

ISSUED BY SINGAPORE PORT OPERATIONS CONTROL CENTRE (as at 30th Aug 2016)

V
EXTRACT OF ADMIRALTY NOTICES TO MARINERS
FOR DUAL-BADGED CHARTS

These notices can also be accessed directly from UKHO Website:

<http://www.admiralty.co.uk/maritime-safety-information/admiralty-notices-to-mariners>

3935* SINGAPORE - Johor Strait and Tanjong Gul - Buoyage. Floating dock.


Source: Maritime and Port Authority of Singapore

Chart 4033 [*previous update New Edition 17/03/2016*] WGS84 DATUM

Amend designation of floating dock to, *Floating Dock 4* 1° 17'·597N., 103° 40'·441E..

Chart 4038 [*previous update New Edition 25/02/2016*] WGS84 DATUM

Insert  **Fl. Y.6s Hyflx-1** 1° 18'·23N., 103° 37'·22E.

 **Fl. Y.4s Hyflx-2** 1° 18'·06N., 103° 37'·13E.

Replace  *Fl(2)Y.8s PL3* with  **Fl(2)Y.8s PL3** 1° 21'·86N., 103° 38'·44E.

Delete  *Fl(2+1)G.10s Merawang* 1° 19'·30N., 103° 37'·01E.

Chart 4040 [*previous update 3314/16*] WGS84 DATUM

Insert  **Fl. Y.6s Hyflx-1** 1° 18'·23N., 103° 37'·22E.

 **Fl. Y.4s Hyflx-2** 1° 18'·06N., 103° 37'·13E.

Delete  *Fl(2+1)G.10s Merawang* 1° 19'·30N., 103° 37'·01E.

Updated to Admiralty Notices to Mariners Edition No. 34 of 2016 dated 25th Aug 2016

SINGAPORE ENC DISTRIBUTORS

ENC DISTRIBUTOR	ADDRESS	TEL/FAX /EMAIL/WEBSITE
C-MAP Norway AS	Hovlandsveien 52, 4374 Egersund, Norway	Tel: +47 51 46 4700 Fax: +47 51 46 4701 Email: enc@c-map.com Website : http://www.c-map.com
ChartWorld GmbH	Atlantic Haus, Zirkusweg 1 D-20359 Hamburg Germany	Tel: +49 40 853 58 6942 Fax: +49 40 853 58 6949 Email: sales@chartworld.com
ChartWorld Asia Pacific Pte Ltd.	Frontech Centre 07-01 15 Jalan Kilang Barat Singapore 159357	Tel: +65 6513 3500 Website: http://www.chartworld.com http://www.ecdis-as-a-service.com
Global Navigation Solutions Pte Ltd	2 Boon Leat Terrace #05-02/03/04, Harbourside Building 2 Singapore 119844	Tel: +65 6270 4060 Fax: +65 6276 3858 Email: sg.info@gnsworldwide.com Website: www.gnsworldwide.com
Japan Hydrographic Association (Electronic Charts Division)	Daiichi Sogo Bldg, 6F 1-6-6, Hanedakuko, Ota-ku Tokyo 144-0041, Japan	Tel: +81 3 5708 7093 Fax: +81 3 5708 7094 Email: shimizu-6kj@jha.jp Website: http://www.jha.or.jp/en/jha/
Maritime Information Systems (MARIS)	52, Telok Blangah Road #01-06 Telok Blangah House Singapore 058809	Tel: +65 6276 1472 Fax: +65 6276 1473 Email: : support@maris.sg Website: http://www.maris.no
Maritime Information Systems AS (MARIS)	Danholmen 25, 3128 Notteroy Norway	Tel: +47 33 30 42 50 Fax: +47 33 30 42 51 Email: : sales@maris.no Website: http://www.maris.no
Motion Smith	15 Jalan Kilang Barat #08-01/05 Frontech Centre Singapore 159357	Tel: +65 6220 5098 Fax: +65 6225 4902 Email: sales@motsmith.com Website: http://www.motsmith.com
PRIMAR STAVANGER	Lervigsveien 36, P.O Box 60 N-4001 Stavanger, Norway	Tel: +47 51 93 9500 Fax: +47 51 93 9501 Email: sales@ecc.no Website :http://www.primar.no
Transas Marine Pacific Pte Ltd	Cyber Centre 16/18 Jalan Kilang Barat Off Jalan Bukit Merah Singapore 159358	Tel: +65 6271 0200 Fax: +65 6271 7300 Email: navigation.asia@transas.com Website: http://www.transas.com
The United Kingdom Hydrographic Office	Admiralty Way, Taunton Somerset, TA1 2DN United Kingdom	Tel: +44 1823 33 7900 Fax: +44 1823 28 4077 Emails: ENCS.SalesReports@ukho.gov.uk Website: http://www.ukho.gov.uk

Chart Distributors for the Maritime and Port Authority of Singapore
Nautical Charts and Publications

Please approach any of the Chart Distributors to purchase the Singapore Nautical Charts and Publications.

CHART DISTRIBUTORS	ADDRESS	TEL/FAX/EMAIL/WEBSITE
Chartco (Singapore) Pte Ltd	896 Dunearn Road #03-05 Sime Darby Centre Singapore 589472	Tel: +65 6545 9880 Ext 65285 Fax: +65 6545 8892 Email: leslie.khoo@chartco.com Website: http://www.chartco.com
Cornes (Singapore) Pte Ltd	10 Anson Road #23-06/6A International Plaza Singapore 079903	Tel: +65 6223 8320 Fax: +65 6223 8321 Email: sales9850@cspl.sg Website: http://www.cornes-charts.com
E.W. Liner Charts & Publications Pte Ltd	100, Pasir Panjang Road #05-10 Singapore 118518	Tel: +65 6323 0773 Fax: +65 6323 0775 Email: sales@ewliner.com Website: http://www.ewliner.com
Global Navigation Solutions Pte Ltd	2 Boon Leat Terrace #05-02/03/04, Harbourside Building 2 Singapore 119844	Tel: +65 6270 4060 (After office hours: +65 9632 5268) Fax: +65 6276 3858 Email: sg.info@gnsworldwide.com Website: www.gnsworldwide.com
Motion Smith	15 Jalan Kilang Barat #08-01/05 Frontech Centre Singapore 159357	Tel: +65 6220 5098 (After office hours: +65 8163 9993) Fax: +65 6225 4902 Email: sales@motsmith.com Website: http://www.motsmith.com

HYDROGRAPHIC NOTE - Instructions

1. Mariners are requested to notify the Chief Hydrographer, Maritime and Port Authority of Singapore, when new or suspected dangers to navigation are discovered, changes are observed in aids to navigation or where corrections to nautical publications may be necessary. Reports, which cannot be confirmed or are lacking in certain details should not be withheld.
2. Any ambiguities of time, positioning and depth should be stressed and any firm expectation of being able to check the information provided on a following voyage should be mentioned.
3. Mariners using satellite position fixing systems, eg. GPS, should provide details of equipment and datum used (where applicable). Where bearings (true or magnetic) are taken visually or by radar to fix a position, it should include more than two objects in order to provide a check on its accuracy. A position may also be defined by bearing and distance from a conspicuous object eg. beacon, lighthouse etc.
4. The note should include a tracing or a digital image of the chart used and the details should be clearly marked.
5. Echo sounders frequently register greater depths than the advertised maximum depth for the equipment, eg. a trace appearing at 50 metres may be in fact be 550 metres or even 1050 metres for equipment whose maximum depth is 500 metres. Erroneous depths caused by 2nd transmission error can usually be recognised by the following:
 - (a) the tracing being weaker than normal for the depth registered,
 - (b) the trace appearing to pass through the transmission line,
 - (c) the feathery nature of the trace.
6. Upon receipt of a hydrographic note, a Notice to Mariners may be issued. The sender's vessel or name is quoted as the source unless the same information is also received in foreign Notices to Mariners.
7. Reports of shoals, uncharted dangers and defects in aids to navigation may also be made to the appropriate Singapore Port Operations Control Centre on VHF Channels 10, 12, 14, 68 or 73.

HYDROGRAPHIC NOTE

To:

Chief Hydrographer
Maritime and Port Authority of Singapore
7B Keppel Road #20-00 Tanjong Pagar Complex
Singapore 089055

Tel : (65) 6325 2027
Fax : (65) 6226 1076
Email : hydrographic@mpa.gov.sg

Sender's Contact Details :

Date :

Name of Vessel :

Address of Sender :

Tel : Fax :

Email :

Nature of Observation :

General Location :

Subject :

Position : Lat. Long.

Charts Used :

Date & Time of Observation :

Details :

.....

.....

Attachment :

Equipment Used :

Type of Position Fixing : GPS / DGPS Others :

Type of Echo Sounder :

Name and Signature :

Ship's/Company's Stamp :