



SINGAPOREAN NOTICES TO MARINERS

SECTION	CONTENT	Page
I	Affected Charts & Publications	1
II	New Charts & Publications	3
	Notices to Mariners and Chart Corrections	13
	Temporary and Preliminary Notices	16
III	Navigational Information	19
	Amendments to Publications	20
IV	Reprint of Maritime Safety Information	23
V	Extract of Admiralty Notices to Mariners for Dual-Badged Charts	25

The monthly Notices to Mariners contain information required to keep charts and publications published by the Hydrographic Department, Maritime and Port Authority of Singapore up-to-date.

Mariners are requested to notify the Chief Hydrographer, Maritime and Port Authority of Singapore, immediately of the discovery of new or suspected dangers to navigation, observed changes to aids to navigation and ways Singaporean Charts and Publications can be improved. The Hydrographic Note on the back page should be used for this purpose.

Detailed information of charts and publications (coverage of charts, latest editions and distributors) are available on the Maritime and Port Authority Website: www.mpa.gov.sg

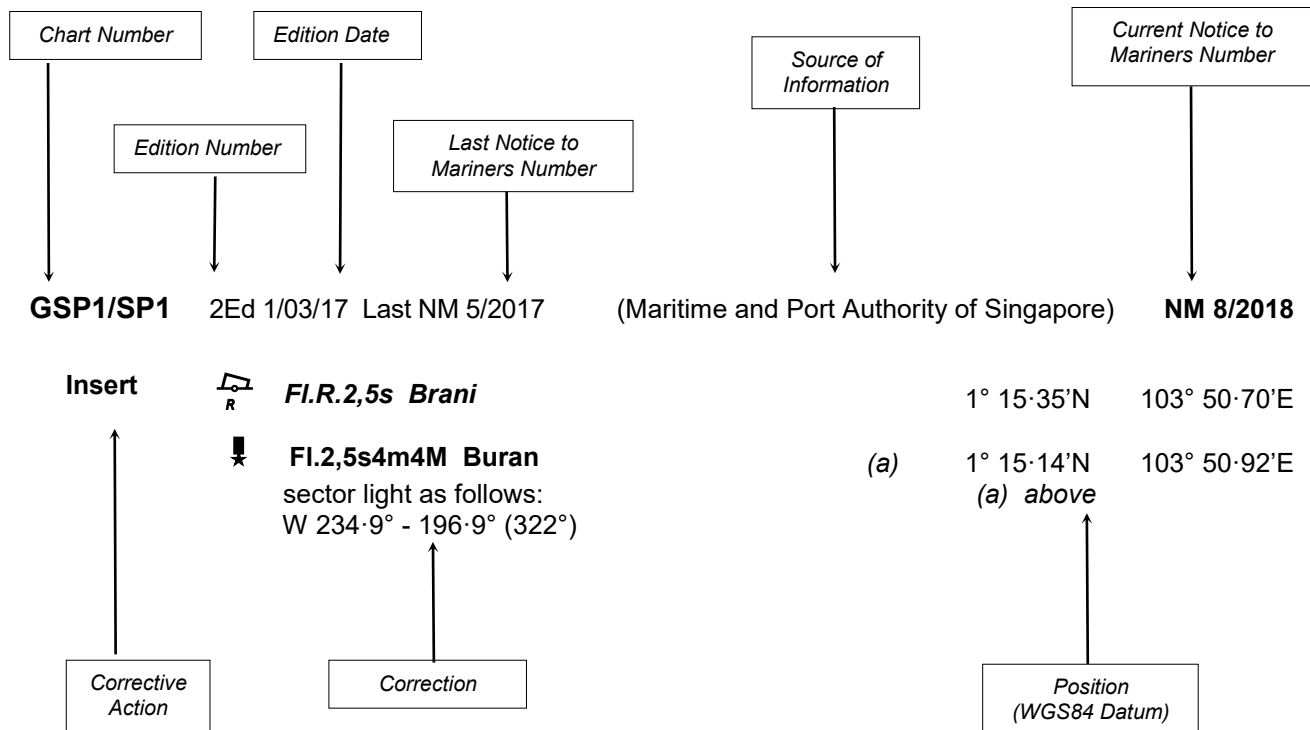
- [Singaporean Notice to Mariners](#)
- [Singaporean Charts](#)
- [Dual-Badged Charts](#)
- [Singapore ENC](#)
- [Malacca and Singapore Straits ENC](#)
- [Singapore Port Information](#)
- [Singapore Tide Tables](#)

Contact information:

Hydrographic Department
Maritime and Port Authority of Singapore
7B Keppel Road
#20-00 Tanjong Pagar Complex
Singapore 089055
Tel : (65) 6325 2027
Fax : (65) 6226 1076
Email : hydrographic@mpa.gov.sg

EXPLANATION OF FORMAT

The elements of a typical chart correction are explained below.



Notes:

- Notice to Mariners number followed by:
T indicates a Temporary Notice (eg. **NM 9T/2018**).
P indicates a Preliminary Notice (eg. **NM 10P/2018**).
- Bearings are true reckoned clockwise from 000° to 359°; those relating to lights are from seaward.
- Heights and elevations are above Mean High Water Springs.

I
AFFECTED CHARTS AND PUBLICATIONS

INDEX OF AFFECTED CHARTS

DESCRIPTION	NOTICE NO.	PAGE NO.
New Charts and Publications	-	3 to 12
Singaporean Chart GSP1/SP1	*67, 68, 69, *70, *71, *72	13
Singaporean Chart 202	*67, 68	13
Singaporean Chart 500	*67, *70, *71	14
Singaporean Chart 501	*67, *70, *71, *72	14
Singaporean Chart 502	68, 69	14
Singaporean Chart 503	68, *71	15
Temporary and Preliminary Notices	73P, *74P, *75P, *76P	16 to 18
Singapore Port Marine Notices/Circulars	*77	19
Amendments to Publications	*78	20 to 22
Reprint of Maritime Safety Information	-	23, 24
Extract of Admiralty Notices to Mariners for Dual-Badged Charts	-	25 to 27

*Source: Maritime and Port Authority of Singapore

I
AFFECTED CHARTS AND PUBLICATIONS

INDEX OF NOTICES

NOTICE NO.	DESCRIPTION	PAGE NO.
-	New Charts and Publications	3 to 12
*67, 68, 69, *70, *71, *72	Singaporean Chart GSP1/SP1	13
*67, 68	Singaporean Chart 202	13
*67, *70, *71	Singaporean Chart 500	14
*67, *70, *71, *72	Singaporean Chart 501	14
68, 69	Singaporean Chart 502	14
68, *71	Singaporean Chart 503	15
73P, *74P, *75P, *76P	Temporary and Preliminary Notices	16 to 18
*77	Singapore Port Marine Notices/Circulars	19
*78	Amendments to Publications	20 to 22
-	Reprint of Maritime Safety Information	23, 24
-	Extract of Admiralty Notices to Mariners for Dual-Badged Charts	25 to 27

*Source: Maritime and Port Authority of Singapore

II NEW CHARTS AND PUBLICATIONS

NEW EDITION DUAL BADGED CHARTS TO BE PUBLISHED ON 20TH SEPTEMBER 2018

Chart Number	:	4030
Title	:	Port of Singapore West Jurong Anchorages and Temasek Fairway
Coverage	:	Lat 01° 11·05' N 01° 17·00' N Long 103° 36·70' E 103° 40·70' E
Scale	:	1 : 10 000
Date Published	:	20 th September 2018
Size of Chart	:	742.0 x 1096.5 mm
Description	:	This new edition includes updated submarine cables, bathymetry and topography details covering West Jurong Anchorages and Temasek Fairway. The existing chart of the same number published on 2 nd March 2017 will be superseded.

Chart Number	:	4031
Title	:	Port of Singapore Western Approaches to Jurong Island
Coverage	:	Lat 01° 10·15' N 01° 16·12' N Long 103° 38·50' E 103° 42·53' E
Scale	:	1 : 10 000
Date Published	:	20 th September 2018
Size of Chart	:	747.5 x 1100.2 mm
Description	:	This new edition includes updated submarine cables, bathymetry and topography details covering Western Approaches to Jurong Island. The existing chart of the same number published on 2 nd March 2017 will be superseded.

II NEW CHARTS AND PUBLICATIONS

NEW EDITION DUAL BADGED CHARTS TO BE PUBLISHED ON 20TH SEPTEMBER 2018

Chart Number	:	4032
Title	:	Port of Singapore Sinki Fairway
Coverage	:	Lat 01° 12-25' N 01° 16-30' N Long 103° 40-20' E 103° 46-13' E
Scale	:	1 : 10 000
Date Published	:	20 th September 2018
Size of Chart	:	1100.0 x 746.4 mm
Description	:	This new edition includes updated submarine cables, bathymetry and topography details covering Sinki Fairway. The existing chart of the same number published on 4 th August 2016 will be superseded.

Chart Number	:	4033
Title	:	Port of Singapore Tuas Bay, West Jurong Channel and Pesek Basin
Coverage	:	Lat 01° 15-00' N 01° 19-05' N Long 103° 36-80' E 103° 42-70' E
Scale	:	1 : 10 000
Date Published	:	20 th September 2018
Size of Chart	:	1094.4 x 746.4 mm
Description	:	This new edition includes updated submarine cables, bathymetry and topography details covering Tuas Bay, West Jurong Channel and Pesek Basin. The existing chart of the same number published on 17 th March 2016 will be superseded.

II NEW CHARTS AND PUBLICATIONS

NEW EDITION DUAL BADGED CHARTS TO BE PUBLISHED ON 20TH SEPTEMBER 2018

Chart Number	:	4034
Title	:	Port of Singapore East Jurong Channel, Pasir Panjang Terminal and West Keppel Fairway
Coverage	:	Lat 01° 14·50' N 01° 18·55' N Long 103° 42·70' E 103° 48·60' E
Scale	:	1 : 10 000
Date Published	:	20 th September 2018
Size of Chart	:	1094.3 x 746.3 mm
Description	:	This new edition includes updated submarine cables, bathymetry and topography details covering East Jurong Channel, Pasir Panjang Terminal and West Keppel Fairway. The existing chart of the same number published on 4 th August 2016 will be superseded.

Chart Number	:	4035
Title	:	Port of Singapore Western Anchorages, Jong Fairway and Cruise Bay
Coverage	:	Lat 01° 10·90' N 01° 16·90' N Long 103° 45·50' E 103° 49·54' E
Scale	:	1 : 10 000
Date Published	:	20 th September 2018
Size of Chart	:	749.4 x 1105.7 mm
Description	:	This new edition includes updated submarine cables, bathymetry and topography details covering Western Anchorage, Jong Fairway and Cruise Bay. The existing chart of the same number published on 6 th April 2017 will be superseded.

II NEW CHARTS AND PUBLICATIONS

NEW EDITION DUAL BADGED CHARTS TO BE PUBLISHED ON 20TH SEPTEMBER 2018

Chart Number	:	4036
Title	:	Port of Singapore Raffles Lighthouse to The Sisters
Coverage	:	Lat 01° 09·40' N 01° 13·47' N Long 103° 44·20' E 103° 50·13' E
Scale	:	1 : 10 000
Date Published	:	20 th September 2018
Size of Chart	:	1100.0 x 750.1 mm
Description	:	This new edition includes updated submarine cables, bathymetry and topography details covering Raffles Lighthouse to The Sisters. The existing chart of the same number published on 6 th April 2017 will be superseded.

Chart Number	:	4037
Title	:	Port of Singapore Keppel Harbour, Tanjong Pagar Terminal and Approaches
Coverage	:	Lat 01° 12·52' N 01° 16·59' N Long 103° 49·40' E 103° 55·34' E
Scale	:	1 : 10 000
Date Published	:	20 th September 2018
Size of Chart	:	747.5 x 1100.2 mm
Description	:	This new edition includes updated submarine cables, bathymetry and topography details covering Keppel Harbour, Tanjong Pagar Terminal and Approaches. The existing chart of the same number published on 6 th April 2017 will be superseded.

II NEW CHARTS AND PUBLICATIONS

NEW EDITION SINGAPORE ENC TO BE RELEASED ON 20TH SEPTEMBER 2018

ENC Name	:	SG5C4030
Location	:	West Jurong Anchorages and Temasek Fairway
Coverage	:	Lat 01° 11·050' N 01° 16·300' N Long 103° 36·700' E 103° 40·640' E
Compilation Scale	:	1 : 8 000
Date Released	:	20 th September 2018
Description	:	This new edition includes updated submarine cables, bathymetry and topography details covering West Jurong Anchorages and Temasek Fairway. The existing cell of the same name released on 2 nd March 2017 will be superseded.

ENC Name	:	SG5C4031
Location	:	Western Approaches to Jurong Island
Coverage	:	Lat 01° 10·150' N 01° 12·250' N Long 103° 38·500' E 103° 42·530' E
Compilation Scale	:	1 : 8 000
Date Released	:	20 th September 2018
Description	:	This new edition includes updated submarine cables, bathymetry and topography details covering Western Approaches to Jurong Island. The existing cell of the same name released on 17 th March 2016 will be superseded.

ENC Name	:	SG5C4032
Location	:	Sinki Fairway
Coverage	:	Lat 01° 12·250' N 01° 16·300' N Long 103° 40·640' E 103° 45·580' E
Compilation Scale	:	1 : 8 000
Date Released	:	20 th September 2018
Description	:	This new edition includes updated submarine cables, bathymetry and topography details covering Sinki Fairway. The existing cell of the same name released on 4 th August 2016 will be superseded.

II NEW CHARTS AND PUBLICATIONS

NEW EDITION SINGAPORE ENC TO BE RELEASED ON 20TH SEPTEMBER 2018

ENC Name	:	SG5C4033
Location	:	Tuas Bay, West Jurong Channel and Pesek Basin
Coverage	:	Lat 01° 16·300' N 01° 19·050' N Long 103° 38·000' E 103° 42·700' E
Compilation Scale	:	1 : 8 000
Date Released	:	20 th September 2018
Description	:	This new edition includes updated submarine cables, bathymetry and topography details covering Tuas Bay, West Jurong Channel and Pesek Basin. The existing cell of the same name released on 17 th March 2016 will be superseded.

ENC Name	:	SG5C4034
Location	:	East Jurong Channel, Pasir Panjang Terminal and West Keppel Fairway
Coverage	:	Lat 01° 16·300' N 01° 18·550' N Long 103° 42·700' E 103° 46·360' E
Compilation Scale	:	1 : 8 000
Date Released	:	20 th September 2018
Description	:	This new edition includes updated submarine cables, bathymetry and topography details covering East Jurong Channel, Pasir Panjang Terminal and West Keppel Fairway. The existing cell of the same name released on 4 th August 2016 will be superseded.

ENC Name	:	SG5C4035
Location	:	West Jurong Anchorages, Jong Fairway and Cruise Bay
Coverage	:	Lat 01° 10·900' N 01° 16·900' N Long 103° 45·580' E 103° 49·425' E
Compilation Scale	:	1 : 8 000
Date Released	:	20 th September 2018
Description	:	This new edition includes updated submarine cables, bathymetry and topography details covering West Jurong Anchorages, Jong Fairway and Cruise Bay. The existing cell of the same name released on 6 th April 2017 will be superseded.

II NEW CHARTS AND PUBLICATIONS

NEW EDITION SINGAPORE ENC TO BE RELEASED ON 20TH SEPTEMBER 2018

ENC Name	:	SG5C4036
Location	:	Raffles Lighthouse to The Sisters
Coverage	:	Lat 01° 09·400' N 01° 12·520' N Long 103° 44·200' E 103° 50·130' E
Compilation Scale	:	1 : 8 000
Date Released	:	20 th September 2018
Description	:	This new edition includes updated submarine cables, bathymetry and topography details covering Raffles Lighthouse to The Sisters. The existing cell of the same name released on 6 th April 2017 will be superseded.

ENC Name	:	SG5C4037
Location	:	Keppel Harbour, Tanjong Pagar Terminal and Approaches
Coverage	:	Lat 01° 12·520' N 01° 16·590' N Long 103° 49·425' E 103° 55·340' E
Compilation Scale	:	1 : 8 000
Date Released	:	20 th September 2018
Description	:	This new edition includes updated submarine cables, bathymetry and topography details covering Keppel Harbour, Tanjong Pagar Terminal and Approaches. The existing cell of the same name released on 6 th April 2017 will be superseded.

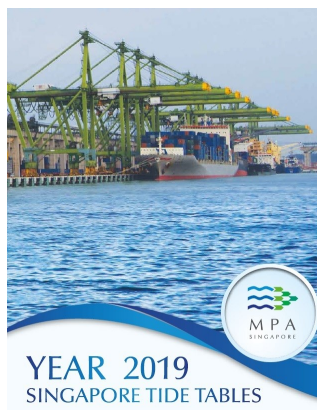
II NEW CHARTS AND PUBLICATIONS

SINGAPORE TIDE TABLES YEAR 2019 TO BE PUBLISHED ON 15TH SEPTEMBER 2018

Summary of Publication

This publication contains Tidal Height and Tidal Stream Predictions covering stations in Singapore Port Waters and along the Straits of Malacca and Singapore.

This publication consists of 5 segments.



1. High and Low Water Predictions at the following stations:

- a) Tanjong Pagar
- b) Sembawang

2. Hourly Tidal Height Predictions at the following stations:

- a) West Tuas
- b) Sultan Shoal Lighthouse
- c) Raffles Lighthouse
- d) West Coast
- e) Bukom
- f) Tanjong Pagar
- g) Tanah Merah
- h) Tanjong Changi
- i) Sembawang
- j) Singapore Strait - Horsburgh Lighthouse

3. Hourly Tidal Stream Predictions at the following stations:

- a) Main Strait - off Tuas View
- b) Sinki Fairway - Banyan
- c) Jong Fairway - off Sisters Buoy
- d) Main Strait - off Shell SBM Buoy
- e) Sentosa - off Cruise Bay
- f) East Buran
- g) Main Strait - Eastern Petroleum A
- h) Kuala Johor - off Malang Tiga

4. Maximum and Slack Tidal Stream Predictions at the following stations:

- a) Malacca Strait - off Pulau Iyu Kecil Light
- b) Singapore Strait - Selat Phillip
- c) Singapore Strait - Karang Banteng (Buffalo Rock)
- d) Singapore Strait - Horsburgh Lighthouse

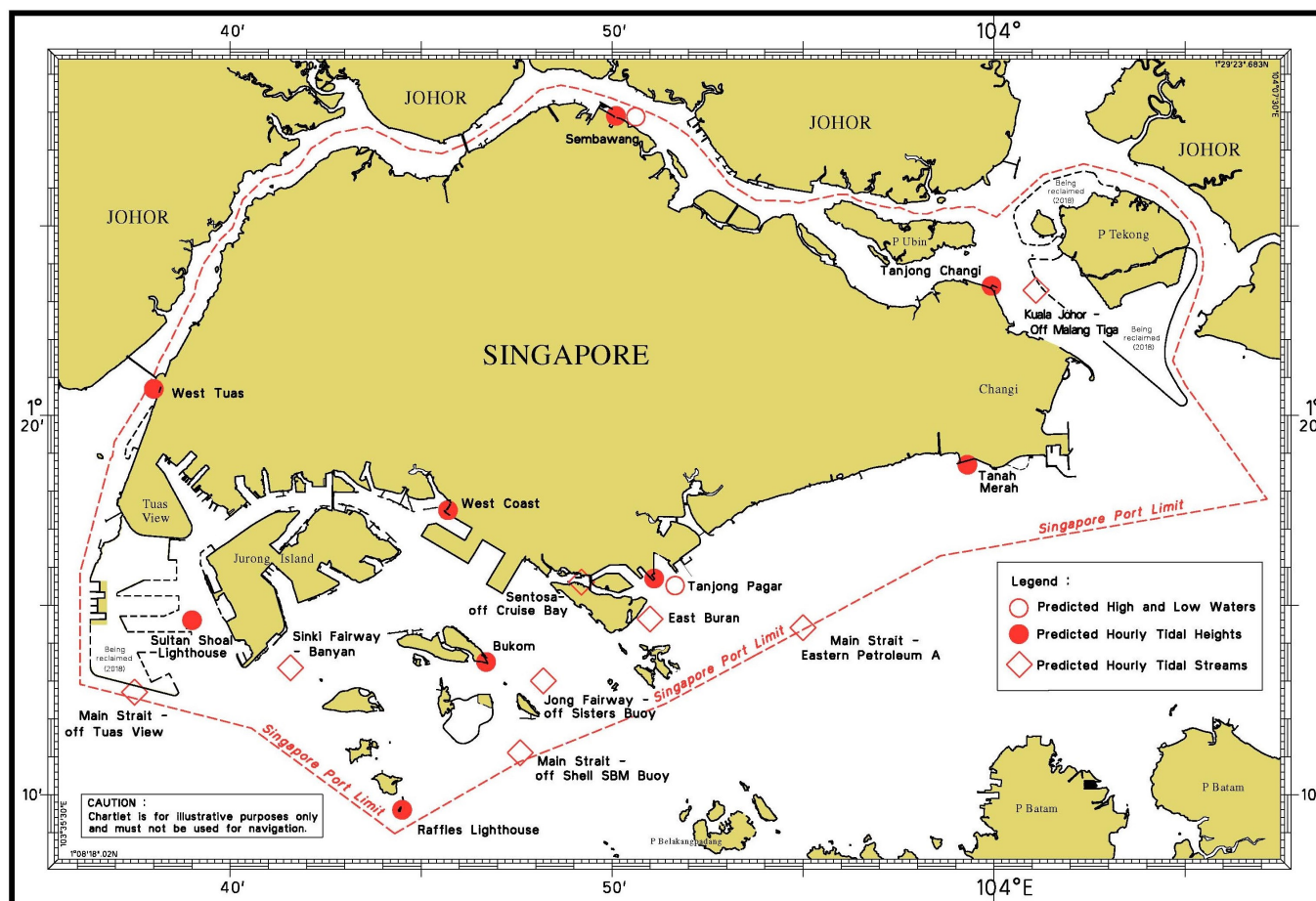
5. Malacca Strait - High and Low Water Predictions at the following stations:

- a) Kedah Pier, Pulau Pinang
- b) Port Dickson
- c) Kuala Batu Pahat

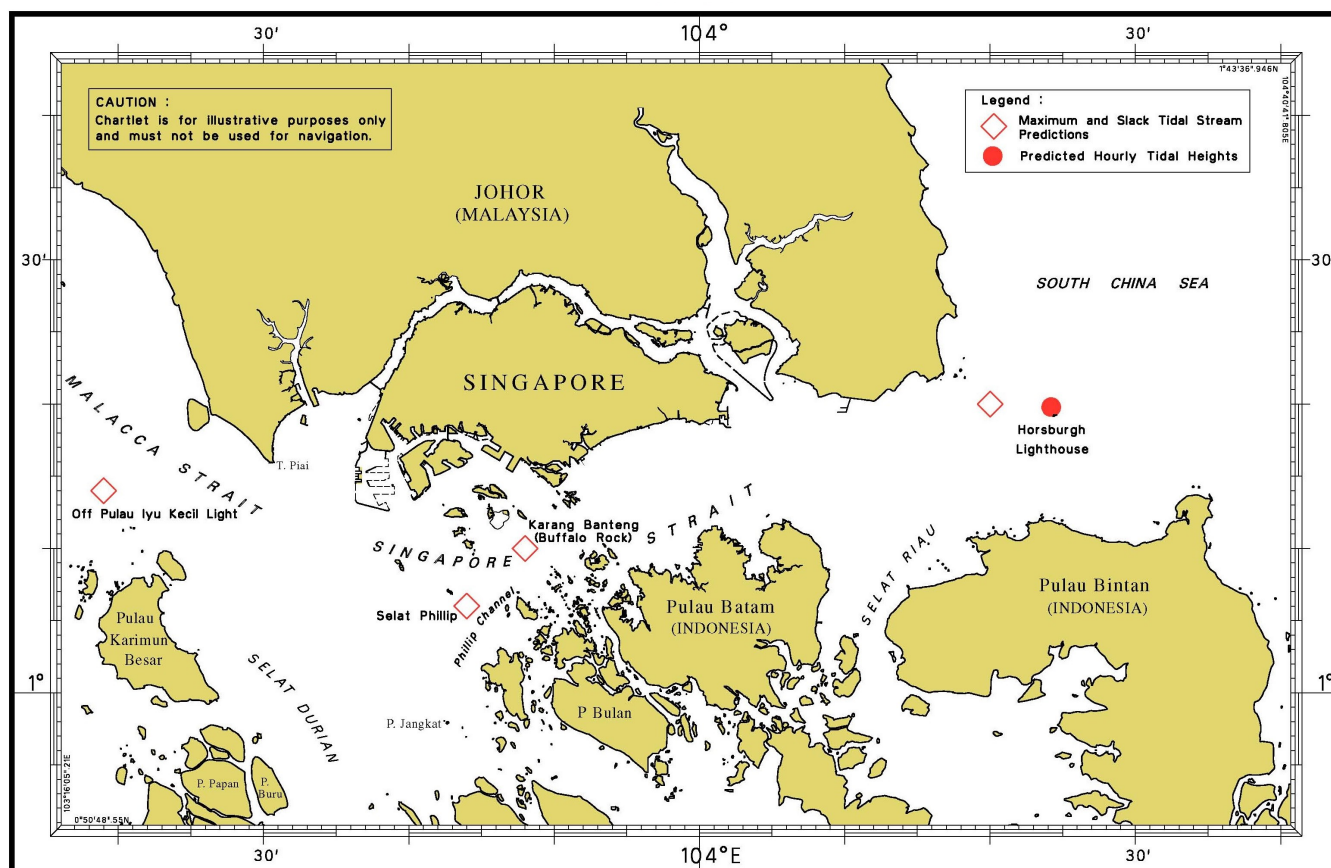
The locations of the above stations are shown in the chartlets below:

II NEW CHARTS AND PUBLICATIONS

Tidal Prediction Stations within Singapore Port Waters

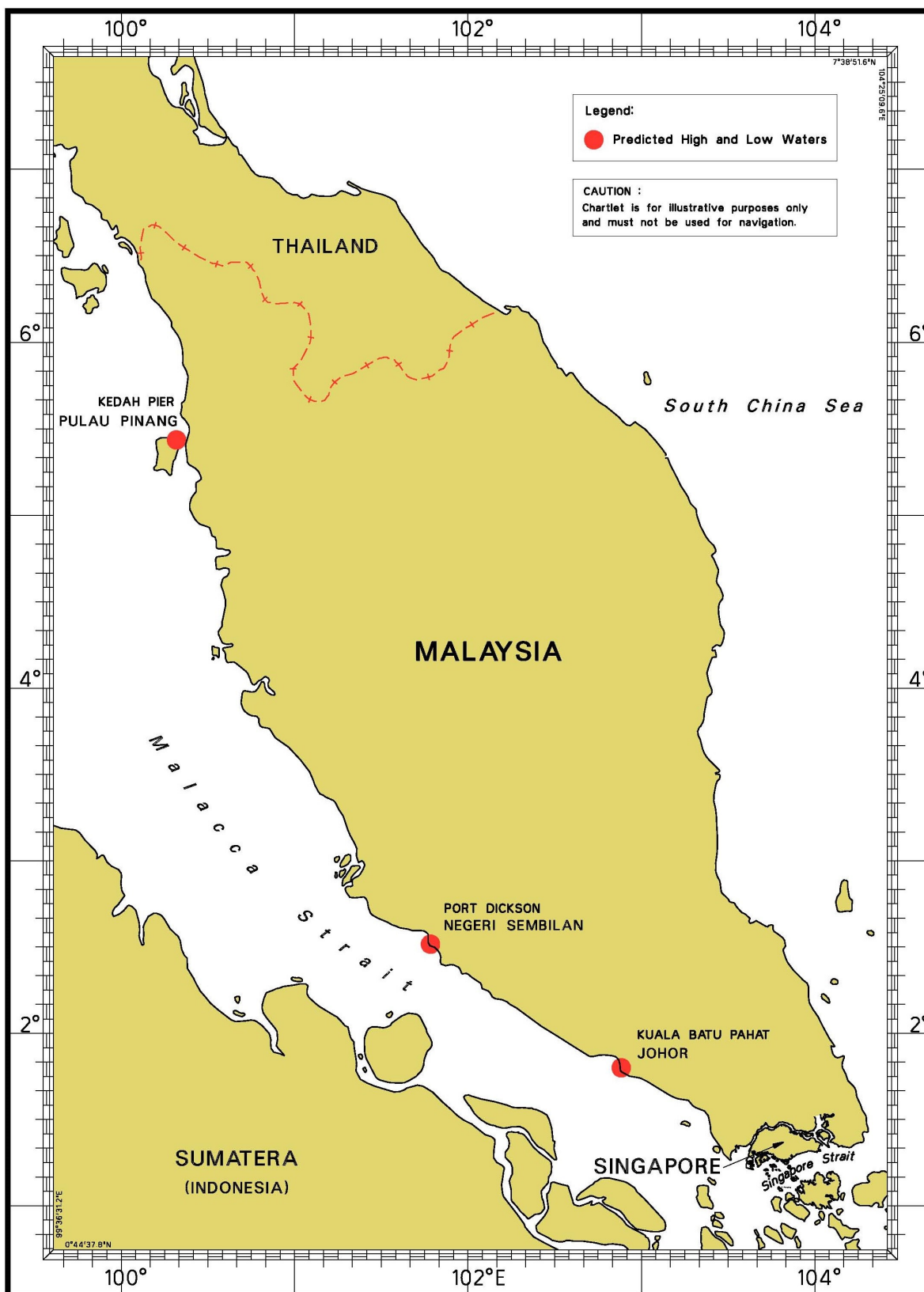


Tidal Prediction Stations in Straits of Malacca and Singapore



II NEW CHARTS AND PUBLICATIONS

Tidal Prediction Stations In Malacca Strait






This publication can be purchased from any of the MPA appointed Chart Distributors.

Information on the MPA appointed Chart Distributors can be found from the following link:

<http://www.mpa.gov.sg/web/portal/home/media-centre/publications/singapore-tide-tables>




II

NOTICES TO MARINERS AND CHART CORRECTIONS

GSP1/SP1	3 Ed 15/1/18 Last NM 63/2018	(Maritime and Port Authority of Singapore)	NM 67/2018
Insert	 <i>Wk</i>	1°08·92'N (Malaysia Marine Department Notice No. 93/2018)	103°44·10'E NM 68/2018
Move	① <i>West Pilot Boarding Ground</i> from:	1°17·77'N	104°08·04'E
	to:	1°17·55'N	104°07·75'E
	(Malaysia Marine Department Notice No. 99/2018)		NM 69/2018
Delete	 <i>Setapa Fl(3)G.5s</i>	1°20·00'N (Maritime and Port Authority of Singapore)	104°07·93'E NM 70/2018
Insert	the accompanying block centred on :	1°13·88'N (Maritime and Port Authority of Singapore)	103°38·11'E NM 71/2018
	<i>Note:</i> Former notice 112(T)/2017 and 115(T)/2017 is cancelled		
Delete	radar beacon, Racon(G), at light-beacon	1°14·83'N	103°42·09'E
	legend, Racon(M), at light-beacon	1°15·30'N	103°45·54'E
	(Maritime and Port Authority of Singapore)		NM 72/2018
Amend	sectors at light as follows: G 16·0° - 16·5° (0·5°) W 16·5° - 17·5° (1·0°) R 17·5° - 19·0° (1·5°)	1°12·59'N	103°46·66'E
<hr/>			
202	8 Ed 15/9/16 Last NM 33/2018	(Maritime and Port Authority of Singapore)	NM 67/2018
Insert	 <i>Wk</i>	1°08·92'N (Malaysia Marine Department Notice No. 93/2018)	103°44·10'E NM 68/2018
Move	① <i>West Pilot</i> from:	1°17·77'N	104°08·04'E
	to:	1°17·55'N	104°07·75'E
Delete	① <i>East Pilot</i>	1°19·35'N	104°15·63'E
Insert	① <i>East Pilot (A)</i>	1°19·58'N	104°17·50'E
	① <i>East Pilot (B)</i>	1°18·22'N	104°12·33'E

II

NOTICES TO MARINERS AND CHART CORRECTIONS

500	8 Ed 15/9/17 Last NM 62/2018	(Maritime and Port Authority of Singapore)	NM 67/2018
Insert	 Wk	1°08·92'N (Maritime and Port Authority of Singapore)	103°44·10'E NM 70/2018
Insert	the accompanying block centred on :	1°14·51'N (Maritime and Port Authority of Singapore)	103°38·76'E NM 71/2018
<i>Note: Former notice 112(T)/2017 is cancelled</i>			
Delete	radar beacon, Racon(G), at light-beacon	1°14·83'N	103°42·09'E
<hr/>			
501	7 Ed 1/9/15 Last NM 63/2018	(Maritime and Port Authority of Singapore)	NM 67/2018
Insert	 Wk	1°08·92'N (Maritime and Port Authority of Singapore)	103°44·10'E NM 70/2018
Insert	the accompanying block centred on :	1°14·70'N (Maritime and Port Authority of Singapore)	103°38·50'E NM 71/2018
<i>Note: Former notice 112(T)/2017 is cancelled</i>			
Delete	radar beacon, Racon(G), at light-beacon	1°14·83'N (Maritime and Port Authority of Singapore)	103°42·09'E NM 72/2018
Amend	sectors at light as follows: G 16·0° - 16·5° (0·5°) W 16·5° - 17·5° (1·0°) R 17·5° - 19·0° (1·5°)	1°12·59'N	103°46·66'E
<hr/>			
502	7 Ed 1/9/15 Last NM 63/2018	(Malaysia Marine Department Notice No. 93/2018)	NM 68/2018
Move	① <i>West Pilot Boarding Ground</i> from:	1°17·77'N	104°08·04'E
	to:	1°17·55'N	104°07·75'E
Delete	① <i>East Pilot Boarding Ground</i>	1°19·35'N	104°15·63'E
Insert	① <i>East Pilot Boarding Ground (B)</i>	1°18·22'N	104°12·33'E
	(Malaysia Marine Department Notice No. 99/2018)		NM 69/2018
Delete	 <i>Fl(3)G.5s Setapa</i>	1°20·00'N	104°07·93'E
<hr/>			

II

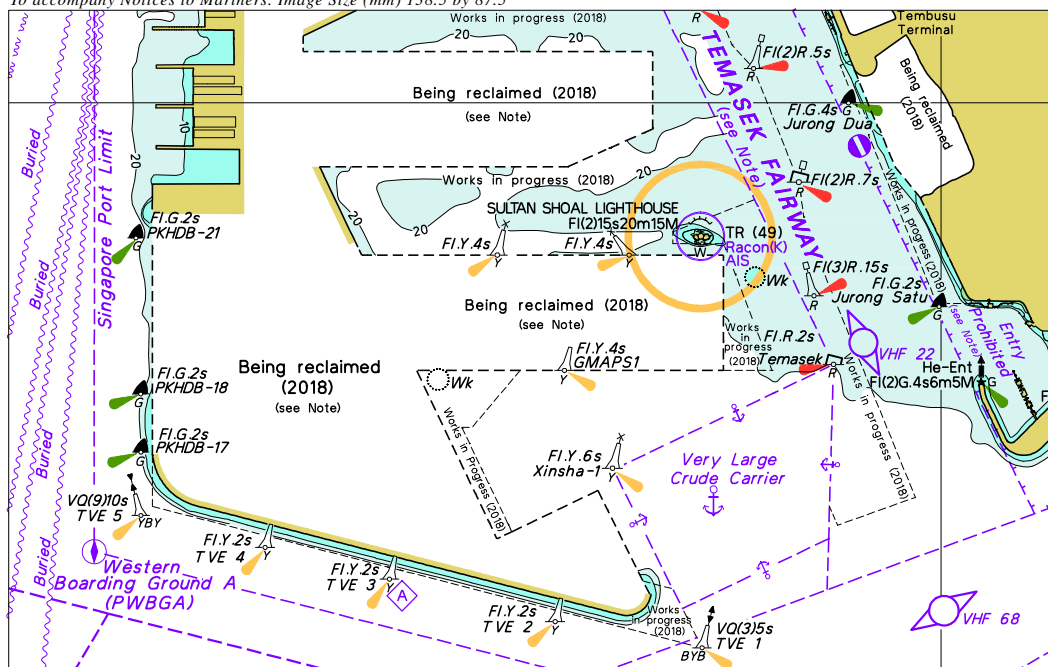
NOTICES TO MARINERS AND CHART CORRECTIONS

503	5 Ed 15/8/14 Last NM 33/2018	(Malaysia Marine Department Notice No. 93/2018)	NM 68/2018
Delete	① <i>East Pilot Boarding Ground</i>	1°19·35'N	104°15·63'E
Insert	① <i>East Pilot Boarding Ground (A)</i>	1°19·58'N	104°17·50'E
	① <i>East Pilot Boarding Ground (B)</i>	1°18·22'N	104°12·33'E
	(Maritime and Port Authority of Singapore)		NM 71/2018
	<i>Note:</i> Former notice 113(T)/2017 is cancelled		
Delete	legend, Racon(O), at lighthouse	1°19·81'N	104°24·34'E

[illegible]

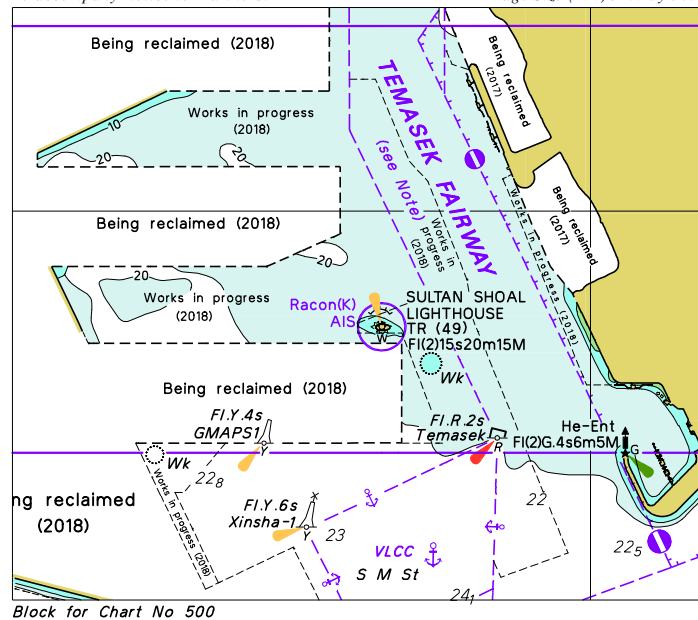
Block for Chart No. GSP1

To accompany Notices to Mariners. Image Size (mm) 138.5 by 87.5

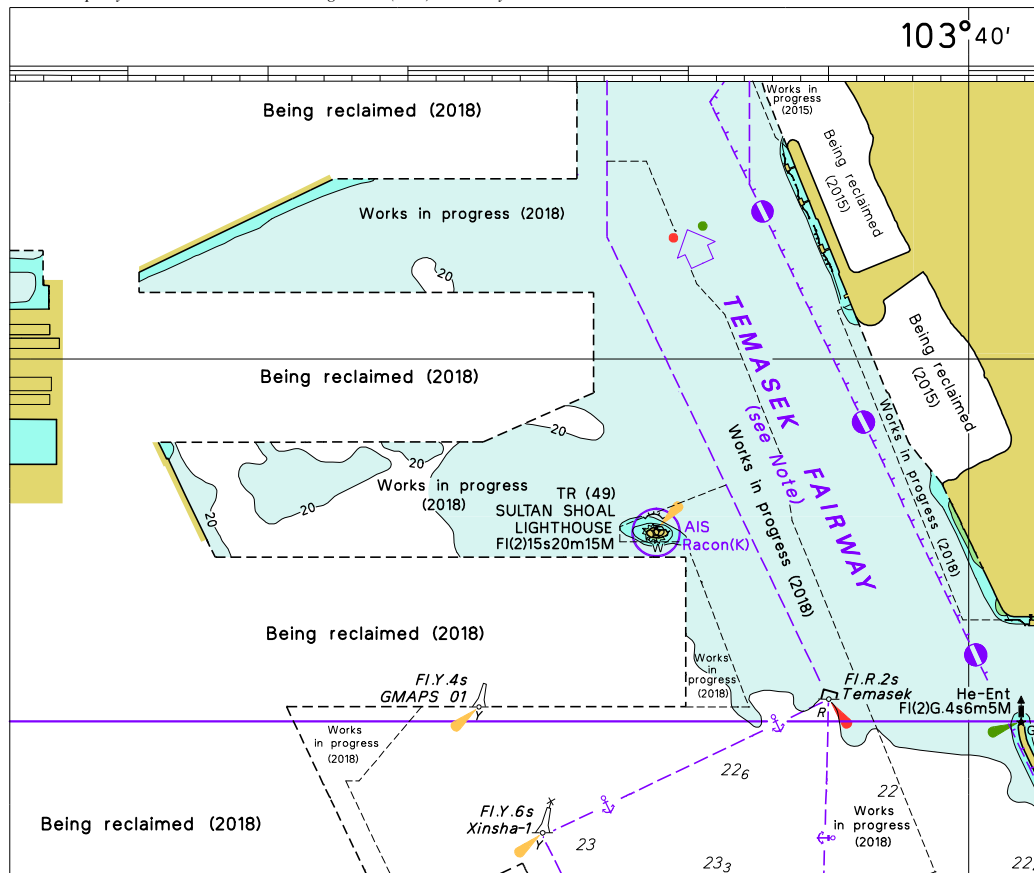


Block for Chart No. SP1

Image Size (mm) 91.6 by 78.4



To accompany Notice to Mariners. Image Size (mm) 136.7 by 114.6



Block for Chart 501

II

TEMPORARY AND PRELIMINARY NOTICES

(NM 73P/2018)

SEAX CABLE EXCHANGE - 1 (SEAX-1) SUBMARINE CABLE - TANAH MERAH
CABLE LANDING TO SOUTH CHINA SEA

1. The SEAX-1 submarine cable has been laid joining the following positions:

Segment 1:

1°18·66'N 103°59·92'E
 1°18·33'N 104°00·18'E
 1°16·96'N 104°02·41'E
 1°16·53'N 104°02·89'E
 1°16·27'N 104°03·06'E
 1°14·36'N 104°03·23'E
 1°14·21'N 104°03·48'E
 1°14·27'N 104°04·80'E
 1°14·43'N 104°05·26'E
 1°13·94'N 104°06·04'E
 1°14·04'N 104°07·81'E
 1°14·56'N 104°08·25'E
 1°14·83'N 104°12·58'E
 1°14·56'N 104°15·47'E
 1°16·16'N 104°19·95'E
 1°18·59'N 104°22·91'E
 1°20·26'N 104°23·79'E
 1°21·39'N 104°25·29'E
 1°21·64'N 104°26·14'E
 1°28·67'N 104°35·38'E
 1°30·05'N 104°34·66'E
 1°38·41'N 104°37·47'E
 1°41·92'N 104°32·75'E
 1°50·01'N 104°33·57'E

Segment 2:

1°13·94'N 104°06·04'E
 1°13·78'N 104°06·34'E
 1°13·47'N 104°06·51'E
 1°13·32'N 104°06·90'E
 1°12·77'N 104°07·20'E
 1°12·40'N 104°08·47'E
 1°11·08'N 104°08·25'E
 1°10·83'N 104°08·46'E
 1°10·06'N 104°08·47'E
 1°10·04'N 104°08·32'E

II

TEMPORARY AND PRELIMINARY NOTICES

Segment 3:

1°13·94'N,104°06·04'E

1°13·89'N,104°06·20'E

1°13·89'N,104°06·26'E

2. This changes will be included in the next New Edition Singaporean and Dual Badged Charts.
3. Charts Affected: Singaporean GSP1/SP1, 202, 502, 503 Dual Badged 4040, 4041, 4043 and 4040

Source : NEXT Generation Provider Pte Ltd

II

TEMPORARY AND PRELIMINARY NOTICES

(NM 74P/2018)

OUTER SHOAL BEACON RE-ESTABLISHED

- Description** :
1. Outer Shoal Beacon with light characteristics Fl.G.5s8m5M has been re-established at position 1°15'008"N 103°51'803'E.
 2. Former notice 55T/2018 has been cancelled
 3. This change will be included in the next New Edition Singaporean and Dual Badged Charts.

Charts Affected : Singaporean GSP1/SP1, 501, 502, Dual Badged 4037, 4040 and 4041

Source : Maritime and Port Authority of Singapore

(NM 75P/2018)

RAFFLES LIGHTHOUSE RACON RE-ESTABLISHED

- Description** :
1. Raffles Lighthouse, Racon O has been re-established
 2. Former notice 114T/2017 has been cancelled

Charts Affected : Singaporean GSP1/SP1, 202, 500, 501, Dual-Badged Charts 4036, 4039 and 4040.

Source : Maritime and Port Authority of Singapore

(NM 76P/2018)

SULTAN SHOAL LIGHTHOUSE RACON RE-ESTABLISHED

- Description** :
1. Sultan Shoal Lighthouse, Racon K has been re-established
 2. Former notice 116T/2017 has been cancelled

Charts Affected : Singaporean GSP1/SP1, 202, 500, 501, Dual-Badged Charts 4030, 4031, 4038 and 4040.

Source : Maritime and Port Authority of Singapore

III NAVIGATIONAL INFORMATION

*(NM 77/2018)

SINGAPORE PORT MARINE NOTICES/CIRCULARS

The Port Marine Notices/Circulars shortlisted below would be of particular interest to Mariners. Details and complete list of Port Marine Notices/Circulars are available at this link:

<http://www.mpa.gov.sg/web/portal/home/port-of-singapore/circulars-and-notices>

PMN No.**Subject**

78/2018

Works off west of Jurong Island

79/2018

Reclamation work off Changi East

82/2018

Works at Tuas Terminal Phase 1

84/2018

Shore protection works at Changi Creek

85/2018

Removal of Jetty and installation of mono piles at Pulau Sebarok

*Source: Maritime and Port Authority of Singapore

III AMENDMENTS TO PUBLICATIONS

*(NM 78/2018) UPDATING OF PUBLICATION “SINGAPORE PORT INFORMATION 2018/2019”

CHARACTERISTICS OF AIDS TO NAVIGATION

1. Page 132

TUAS VIEW EXTENSION

Amend the following:

Name Of Beacon/Buoy	Position Lat. N Long. E	Structure, Colour & Shape	Light Characteristic	Owner
GMAPS 01 Buoy	01°13·752' 103°38·253'	Yellow Pillar	Fl.Y.4s	GMAPS

2. Page 136

SINKI FAIRWAY

Delete the following:

Name Of Beacon/Buoy	Position Lat. N Long. E	Structure, Colour & Shape	Light Characteristic	Owner
MD 1	01°13·937' 103°41·127'	Yellow/Yellow tabular tower on dolphin 4m	Fl.Y.4s11m3M	-

Insert the following:

Name Of Beacon/Buoy	Position Lat. N Long. E	Structure, Colour & Shape	Light Characteristic	Owner
MD 0	01°13·925' 103°41·113'	Yellow/Yellow tabular tower on dolphin 4m	Fl.Y.4s11m3M	-

III AMENDMENTS TO PUBLICATIONS

3. Page 137

SINKI FAIRWAY

Amend the following:

Name Of Beacon/Buoy	Position Lat. N Long. E	Structure, Colour & Shape	Light Characteristic	Owner
Serebut Beacon	01°14·833' 103°42·088'	Red can on red metal tubular tower on piles.	Fl(2)R.10s9m10M	MPA

EAST JURONG CHANNEL

Amend the following:

Name Of Beacon/Buoy	Position Lat. N Long. E	Structure, Colour & Shape	Light Characteristic	Owner
Cyrene Beacon	01°15·300' 103°45·538'	Red concrete framework tower. AIS	Fl.R.2,5s8m10M	MPA

4. Page 146

EAST KEPPEL FAIRWAY

Amend the following:

Name Of Beacon/Buoy	Position Lat. N Long. E	Structure, Colour & Shape	Light Characteristic	Owner
Outer Shoal Beacon	01°15·008' 103°51·803'	Green triangle on green tabular tower pivoted at base, Buoyant Beacon	Fl.G.5s8m5M	MPA

III AMENDMENTS TO PUBLICATIONS

5. Page 156

NAME OF LIGHTHOUSES

Amend the following:

Name Of Beacon/Buoy	Position Lat. N Long. E	Structure, Colour & Shape	Light Characteristic	Owner
Horsburgh Lighthouse	01°19·814' 103°24·337'	White round tower, with black bands, 29m. Radar Reflector. AIS	Fl.W.10s31m20M	MPA

WHARVES AND BERTHS

6. Page 160

18 JURONG ISLAND - (SLNG TERMINAL)(1°14·0'N, 103°40·2'E)

Amend the following:

Berth	Length of Berth Box	Depth Alongside (Year Surveyed)	Controlling Depth In Approaches
OSLN 3	400m	13·5 (2018)	15·5m

Page 162

18 JURONG ISLAND - BANYAN BASIN (UT SINGAPORE SERVICES PTE LTD) (1°14·5'N, 103°41·5'E)

Amend the following:

Berth	Length of Berth Box	Depth Alongside (Year Surveyed)	Controlling Depth In Approaches
OMU 5	160m	23·8 (2018)	11·0m
OMU 6	128m	17·4 (2018)	11·0m
OMU 7	122m	19·0 (2018)	10·9m
OMU 8	169m	10·6m (2018)	11·0m
OMU 9	141m	10·8m (2018)	11·0m
OMU 10	156m	10·8m (2018)	10·9m
OMU 15	105m	10·7m (2018)	10·7m
OMU 16	105m	11·0m (2018)	10·7m
OMU 17	116m	10·6m (2018)	10·7m

*Source: Maritime and Port Authority of Singapore

IV

REPRINT OF MARITIME SAFETY INFORMATION

The following Maritime Safety Information have been shortlisted, as they would be of particular interest to mariners.

TT175

VESSELS IN EAST JOHOR STRAIT ARE ADVISED TO NAVIGATE WITH PARTICULAR ALERTNESS AND CAUTION WHEN NEAR THE PROJECT AREAS OFF PULAU TEKONG, CHANGI AND MALANG PAPAN AS SHALLOW WATER AREAS EXIST. VESSELS ARE REMINDED TO PROCEED AT A SAFE SPEED AND MAINTAIN A PROPER LOOKOUT, PARTICULARLY FOR TUGS AND BARGES NAVIGATING NEAR THE PROJECT AREAS AND PASSENGER FERRIES CROSSING BETWEEN CHANGI AND PULAU TEKONG AND VICINITY OF PASIR GUDANG.

TT273

ALL VESSELS ARE ADVISED TO NAVIGATE WITH CAUTION, COMPLY WITH THE COLREGS, MAINTAIN VHF RADIO WATCH AND LISTEN TO TRAFFIC INFORMATION WHEN NAVIGATING IN THE SINGAPORE STRAIT AND PORT WATERS. MARINERS ARE ALSO ADVISED TO KEEP A GOOD LOOKOUT OF FREQUENT FERRIES CROSSING THE SINGAPORE STRAIT.

TT363

MARINERS ARE REMINDED NOT TO ANCHOR IN ALL AREAS IN THE TSS, INCLUDING PRECAUTIONARY AREAS OF THE STRAITS OF MALACCA AND SINGAPORE AS WELL AS BETWEEN THE LANDWARD LIMITS OF THE TSS AND APPROACHES TO THE PORTS. VESSELS ENTERING ANY PORT IN ANY LITTORAL STATES ARE TO ANCHOR IN THE ANCHORAGES DESIGNATED BY THE RESPECTIVE LITTORAL STATES ONLY.

TT399

VESSELS ARRIVING TO SINGAPORE OR TRANSITING THROUGH THE STRAIT ARE RECOMMENDED TO UPDATE THEIR DESTINATION ACCURATELY IN THE AIS TO ENHANCE SITUATIONAL AWARENESS FOR OTHER TRAFFIC IN THE VICINITY. EXAMPLE: SG-PEBGB FOR PILOT EASTERN BOARDING GROUND BRAVO.

TT418

WEST BOUND DEEP DRAFT VESSELS AND VLCCS ARE REMINDED TO COMPLY WITH THE RULES OF VESSELS NAVIGATING THROUGH THE STRAITS OF MALACCA AND SINGAPORE (SOMS). THEY SHALL ALLOW FOR AN UKC OF AT LEAST 3.5 METRES AT ALL TIMES DURING THE ENTIRE PASSAGE THROUGH THE SOMS AND AS FAR AS IT IS SAFE & PRACTICABLE, PROCEED AT A SPEED OF NOT MORE THAN 12 KTS OVER THE GROUND IN THE WESTBOUND LANE OF THE SINGAPORE STRAIT (BETWEEN SOUTH OF ST JOHN'S ISLAND & RAFFLES LIGHTHOUSE).

THEY ARE ADVISED TO BROADCAST, 8 HOURS BEFORE ENTERING THE TSS, NAVIGATIONAL INFORMATION GIVING NAME, DEADWEIGHT, DRAUGHT, SPEED AND TIMES OF PASSING HORSBURGH LIGHTHOUSE AND RAFFLES LIGHTHOUSE.

TT426

ALL MARINERS ARE REMINDED TO NAVIGATE WITH CAUTION IN THE PRECAUTIONARY AREAS AND TSS, MAINTAIN A GOOD LOOKOUT FOR CROSSING TRAFFIC. VESSELS INTENDING TO CROSS THE TSS SHALL DO SO ONLY WHEN IT IS SAFE AND SHALL AT ALL TIMES COMPLY WITH THE COLLISION REGULATIONS.

TT430 (AMENDED ON 23 AUG 2018 0130Z)

THE FOLLOWING ATONS AIS/RACONS ARE TEMPORARILY REMOVED FOR UPGRADING.

ATONS WITH AIS TEMPORARILY REMOVED FOR UPGRADING:

1. ANGLER BUOY
2. BANYAN BEACON
3. MALANG PAPAN BEACON
4. RASU BUOY
5. RAFFLES LIGHTHOUSE
6. SAKIJANG BEACON
7. SELEGI BEACON

ATONS WITH RACON TEMPORARILY REMOVED FOR UPGRADING:

1. CYRENE BEACON
2. HORSBURGH LIGHTHOUSE
3. SEREBUT BEACON

MARINERS ARE ADVISED TO NAVIGATE WITH CAUTION.

IV

REPRINT OF MARITIME SAFETY INFORMATION

TT437

ALL VESSELS IN SEMBAWANG WHARVES LOCATION ARE TO CHECK YOUR COSPAS-SARSAT SYSTEM AND ENSURE THAT 121.5MHZ IS NOT TRANSMITTED. PLEASE STOP EMITTING YOUR 121.5MHZ DISTRESS ALERT IF YOU ARE NOT IN DISTRESS TO PREVENT INTERFERENCE TO AIRSPACE FREQUENCY.

TT440

A NUMBER OF UNKNOWN VESSELS ARE OBSERVED ANCHORED IN THE TSS/PRECAUTIONARY AREA SOUTH OF TG. RAMUNIA AT APPROXIMATE POSITION 1°17'91"N 104°14'92"E. ALL VESSELS ARE ADVISED TO KEEP A GOOD LOOKOUT AND PROCEED WITH CAUTION WHEN PASSING THIS AREA IN THE SINGAPORE STRAIT.

TT465

DGPS SERVICE AT HORSBURGH LIGHTHOUSE (REFERENCE STATION 130/131) IN POSITION 1°19'8"N 104°24'34"E IS UNAVAILABLE. MARINERS ARE ADVISED TO USE ALTERNATE REFERENCE STATION AT RAFFLES LIGHTHOUSE (REFERENCE STATION 132/133).

TT961

VESSELS INTENDING TO CROSS THE TRAFFIC SEPERATION SCHEME (TSS) OR PRECAUTIONARY AREAS IN THE SINGAPORE STRAIT DURING THE HOURS OF DARKNESS ARE RECOMMENDED TO DISPLAY THE NIGHT SIGNALS CONSISTING OF 3 ALL ROUND GREEN LIGHTS IN A VERTICAL LINE AS DETAILED IN THE MARITIME AND PORT AUTHORITY OF SINGAPORE'S PORT MARINE CIRCULAR, 04 OF 2013 DATED 7 MAY 2013.

SR123

SEA ROBBERIES ARE REPORTED IN THE SINGAPORE STRAIT. ALL VESSELS TO REPORT ANY SUSPICIOUS CRAFT TO VTIS SINGAPORE.

ALL VESSELS IN THE VICINITY ARE REQUESTED TO KEEP A SHARP LOOKOUT, RENDER NECESSARY ASSISTANCE, AND REPORT ANY SIGHTINGS TO MRSC JOHOR OR NEAREST COASTAL MALAYSIAN AUTHORITIES FOR FURTHER INSTRUCTION.

ISSUED BY SINGAPORE PORT OPERATIONS CONTROL CENTRE (as at 26th Aug 2018)

V
EXTRACT OF ADMIRALTY NOTICES TO MARINERS
FOR DUAL-BADGED CHARTS


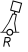
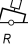
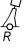
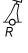
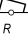
These notices can also be accessed directly from UKHO Website:

<https://www.admiralty.co.uk/maritime-safety-information/admiralty-notices-to-mariners>

4079 SINGAPORE - NM Blocks. Buoyage. Fairway. Maritime Limits. Wreck.

Source: Maritime and Port Authority of Singapore

Chart 4030 [previous update 2436/18] WGS84 DATUM

Insert	maritime limit, pecked line, joining:		1°15·705'N	103°38·709'E
			1°15·706'N	103°38·851'E
			1°15·273'N	103°39·026'E
			1°15·160'N	103°39·130'E
		(a)	1°14·633'N	103°39·342'E
			1°14·419'N	103°39·370'E
			1°13·164'N	103°39·876'E
			1°13·030'N	103°39·515'E
			1°13·116'N	103°39·482'E
		 Fl.R.4s F2-DDJV-3	1°15·440'N	103°38·871'E
		 Fl(2)R.5s F2-DDJV-3A	1°15·160'N	103°39·129'E
		 Fl(2)R.7s F2-DDJV-3B	(a) above	
		 Fl(3)R.15s F2-DDJV-4	1°14·096'N	103°39·413'E
Delete	former	 Fl.R.4s F2-DDJV-3	1°15·440'N	103°38·709'E
		 Fl(3)R.15s F2-DDJV-4	1°14·548'N	103°39·133'E
		symbol can mooring buoy, Fl(5)Y.20s DDJV-MB-3	1°14·456'N	103°38·345'E
		symbol can mooring buoy, Fl(5)Y.20s DDJV-MB-4	1°14·457'N	103°38·517'E

V
EXTRACT OF ADMIRALTY NOTICES TO MARINERS
FOR DUAL-BADGED CHARTS

These notices can also be accessed directly from UKHO Website:

<https://www.admiralty.co.uk/maritime-safety-information/admiralty-notices-to-mariners>

4079 SINGAPORE - NM Blocks. Buoyage. Fairway. Maritime Limits. Wreck. (continued)

Source: Maritime and Port Authority of Singapore

Chart 4031 [previous update 2436/18] WGS84 DATUM








Insert	maritime limit, pecked line, joining:		1°15·705'N	103°38·709'E
			1°15·706'N	103°38·851'E
			1°15·273'N	103°39·026'E
			1°15·160'N	103°39·130'E
		(a)	1°14·633'N	103°39·342'E
			1°14·419'N	103°39·370'E
			1°13·164'N	103°39·876'E
			1°13·030'N	103°39·515'E
			1°13·116'N	103°39·482'E
		 Fl.R.4s F2-DDJV-3	1°15·440'N	103°38·871'E
		 Fl(2)R.5s F2-DDJV-3A	1°15·160'N	103°39·129'E
		 Fl(2)R.7s F2-DDJV-3B	(a) above	
		 Fl(3)R.15s F2-DDJV-4	1°14·096'N	103°39·413'E
Delete	former	 Fl.R.4s F2-DDJV-3	1°15·440'N	103°38·709'E
		 Fl(3)R.15s F2-DDJV-4	1°14·548'N	103°39·133'E
		symbol can mooring buoy, Fl(5)Y.20s DDJV-MB-4	1°14·457'N	103°38·517'E

Chart 4033 [previous update 2436/18] WGS84 DATUM

insert	the accompanying block, centred on:		1°15·9'N	103°38·8'E
	maritime limit, pecked line, joining:		1°15·396'N	103°38·976'E
			1°15·273'N	103°39·026'E
			1°15·160'N	103°39·130'E
			1°15·000'N	103°39·194'E
		 Fl(2)R.5s F2-DDJV-3A	1°15·160'N	103°39·129'E

V
EXTRACT OF ADMIRALTY NOTICES TO MARINERS
FOR DUAL-BADGED CHARTS

These notices can also be accessed directly from UKHO Website:

<https://www.admiralty.co.uk/maritime-safety-information/admiralty-notices-to-mariners>

4079 SINGAPORE - NM Blocks. Buoyage. Fairway. Maritime Limits. Wreck. (continued)

Source: Maritime and Port Authority of Singapore

Chart 4037 [*previous update 115/18*] WGS84 DATUM

Delete		1°13·512'N	103°51·678'E
--------	---	------------	--------------

Chart 4038 [*previous update 3597/18*] WGS84 DATUM

insert	the accompanying block, centred on:	1°14·6'N	103°39·0'E
--------	-------------------------------------	----------	------------

Chart 4039 [*previous update 2941/18*] WGS84 DATUM

Insert	maritime limit, pecked line, joining:	1°13·70'N	103°39·66'E
		1°13·16'N	103°39·88'E
		1°13·03'N	103°39·52'E
		1°13·12'N	103°39·48'E

Chart 4040 [*previous update 3597/18*] WGS84 DATUM


insert	the accompanying block, centred on:	1°14·7'N	103°39·1'E
Delete		1°13·51'N	103°51·68'E

Chart 4041 [*previous update 1597/18*] WGS84 DATUM

Delete		1°13·51'N	103°51·68'E
--------	---	-----------	-------------

4057 MALAYSIA - Peninsular Malaysia, East Coast - Buoy.

Source: Marine Department, Malaysia Notice 99/18

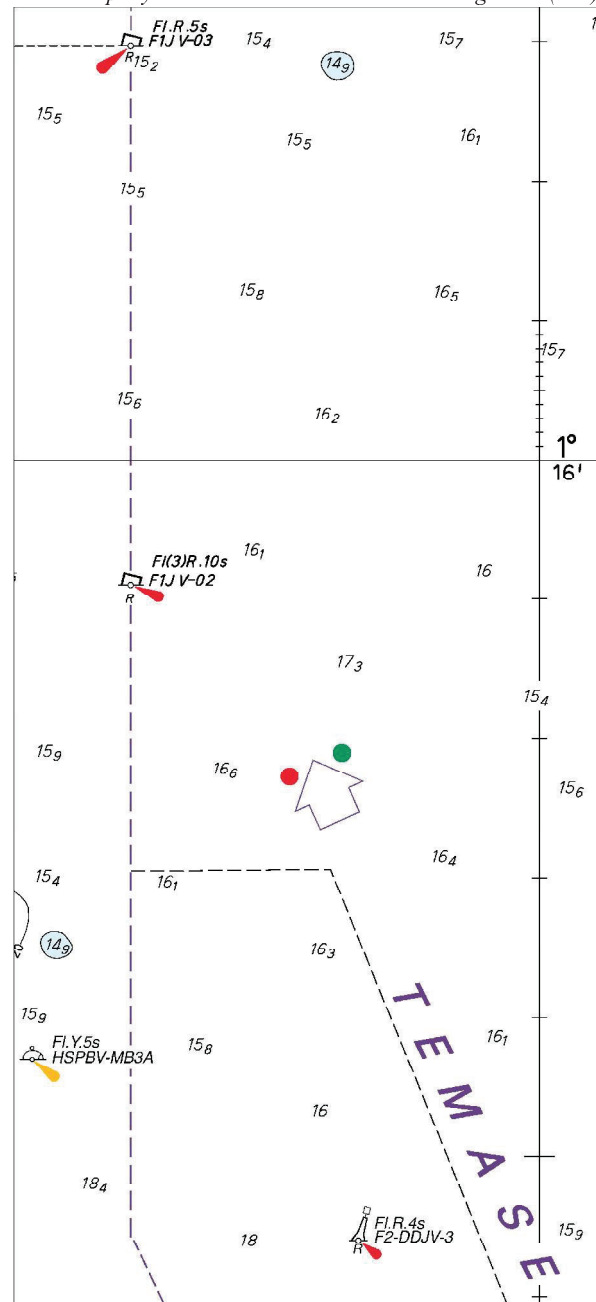
Chart 4042 [*previous update 1597/18*] WGS84 DATUM

Delete	 Fl(3)G.5s Setapa	1°20·00'N	104°07·93'E
--------	--	-----------	-------------

Chart 4043 [*previous update 2950/18*] WGS84 DATUM

Delete	 Fl(3)G.5s Setapa	1°20·00'N	104°07·93'E
--------	--	-----------	-------------

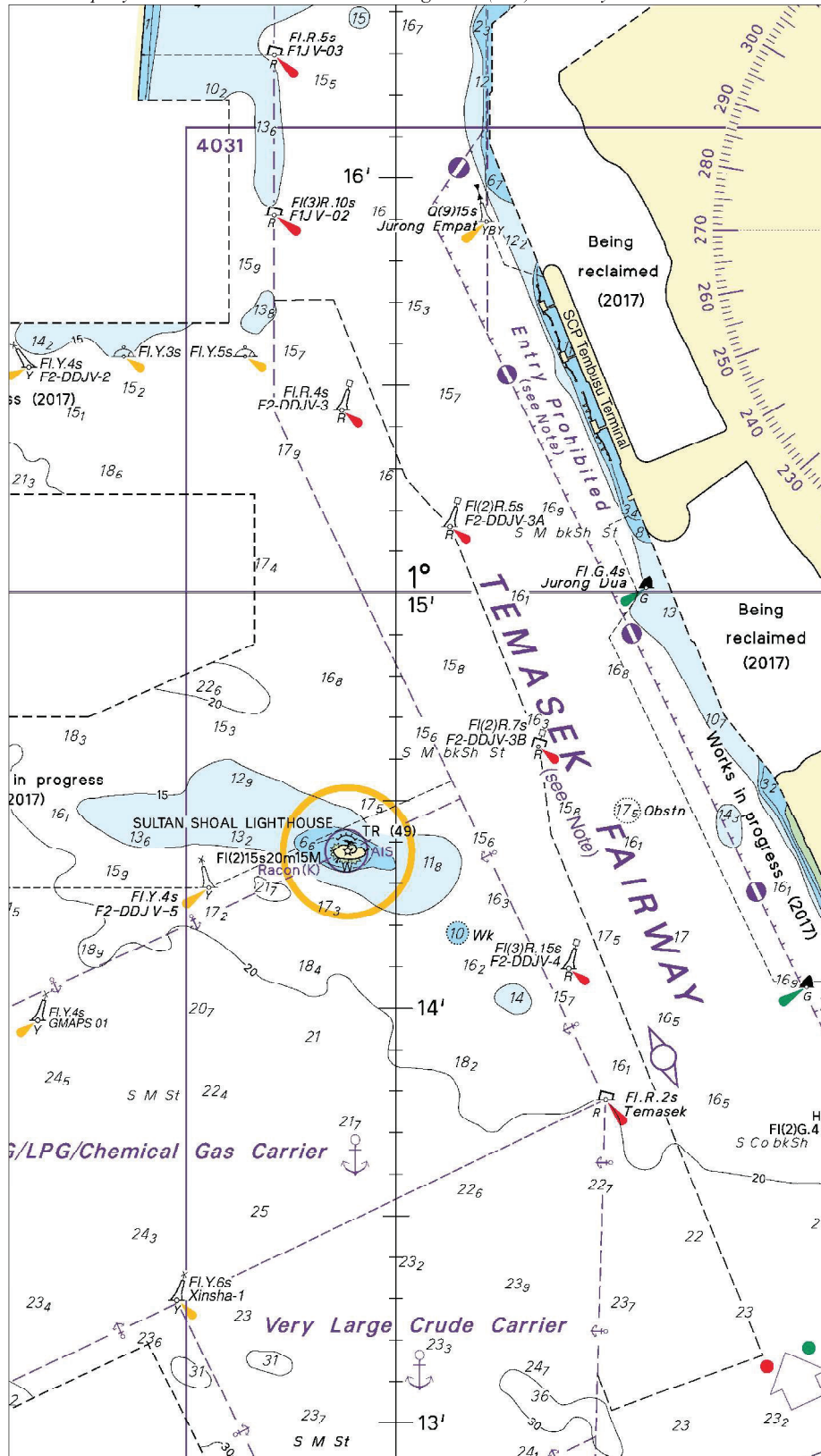
To accompany Notice to Mariners 4079/18. Image Size (mm) 171.7 by 78.6



Block for Chart No 4033

Block for Chart No 4038

To accompany Notice to Mariners 4079/18. Image Size (mm) 215.5 by 121.3



Block for Chart No 4040

HYDROGRAPHIC NOTE - Instructions

1. Mariners are requested to notify the Chief Hydrographer, Maritime and Port Authority of Singapore, when new or suspected dangers to navigation are discovered, changes are observed in aids to navigation or where corrections to nautical publications may be necessary. Reports, which cannot be confirmed or are lacking in certain details should not be withheld.
2. Any ambiguities of time, positioning and depth should be stressed and any firm expectation of being able to check the information provided on a following voyage should be mentioned.
3. Mariners using satellite position fixing systems, eg. GPS, should provide details of equipment and datum used (where applicable). Where bearings (true or magnetic) are taken visually or by radar to fix a position, it should include more than two objects in order to provide a check on its accuracy. A position may also be defined by bearing and distance from a conspicuous object eg. beacon, lighthouse etc.
4. The note should include a tracing or a digital image of the chart used and the details should be clearly marked.
5. Echo sounders frequently register greater depths than the advertised maximum depth for the equipment, eg. a trace appearing at 50 metres may be in fact be 550 metres or even 1050 metres for equipment whose maximum depth is 500 metres. Erroneous depths caused by 2nd transmission error can usually be recognised by the following:
 - (a) the tracing being weaker than normal for the depth registered,
 - (b) the trace appearing to pass through the transmission line,
 - (c) the feathery nature of the trace.
6. Upon receipt of a hydrographic note, a Notice to Mariners may be issued. The sender's vessel or name is quoted as the source unless the same information is also received in foreign Notices to Mariners.
7. Reports of shoals, uncharted dangers and defects in aids to navigation may also be made to the appropriate Singapore Port Operations Control Centre on VHF Channels 10, 12, 14, 68 or 73.

HYDROGRAPHIC NOTE

To:

Chief Hydrographer
Maritime and Port Authority of Singapore
7B Keppel Road #20-00 Tanjong Pagar Complex
Singapore 089055

Tel : (65) 6325 2027
Fax : (65) 6226 1076
Email : hydrographic@mpa.gov.sg

Sender's Contact Details :

Date :

Name of Vessel :

Address of Sender :

Tel : Fax :

Email :

Nature of Observation :

General Location :

Subject :

Position : Lat. Long.

Charts Used :

Date & Time of Observation :

Details :

.....

.....

Attachment :

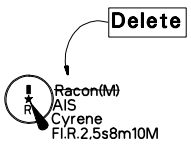
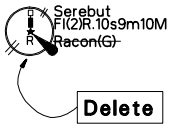
Equipment Used :

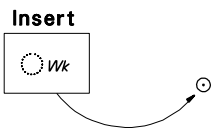
Type of Position Fixing : GPS / DGPS Others :

Type of Echo Sounder :

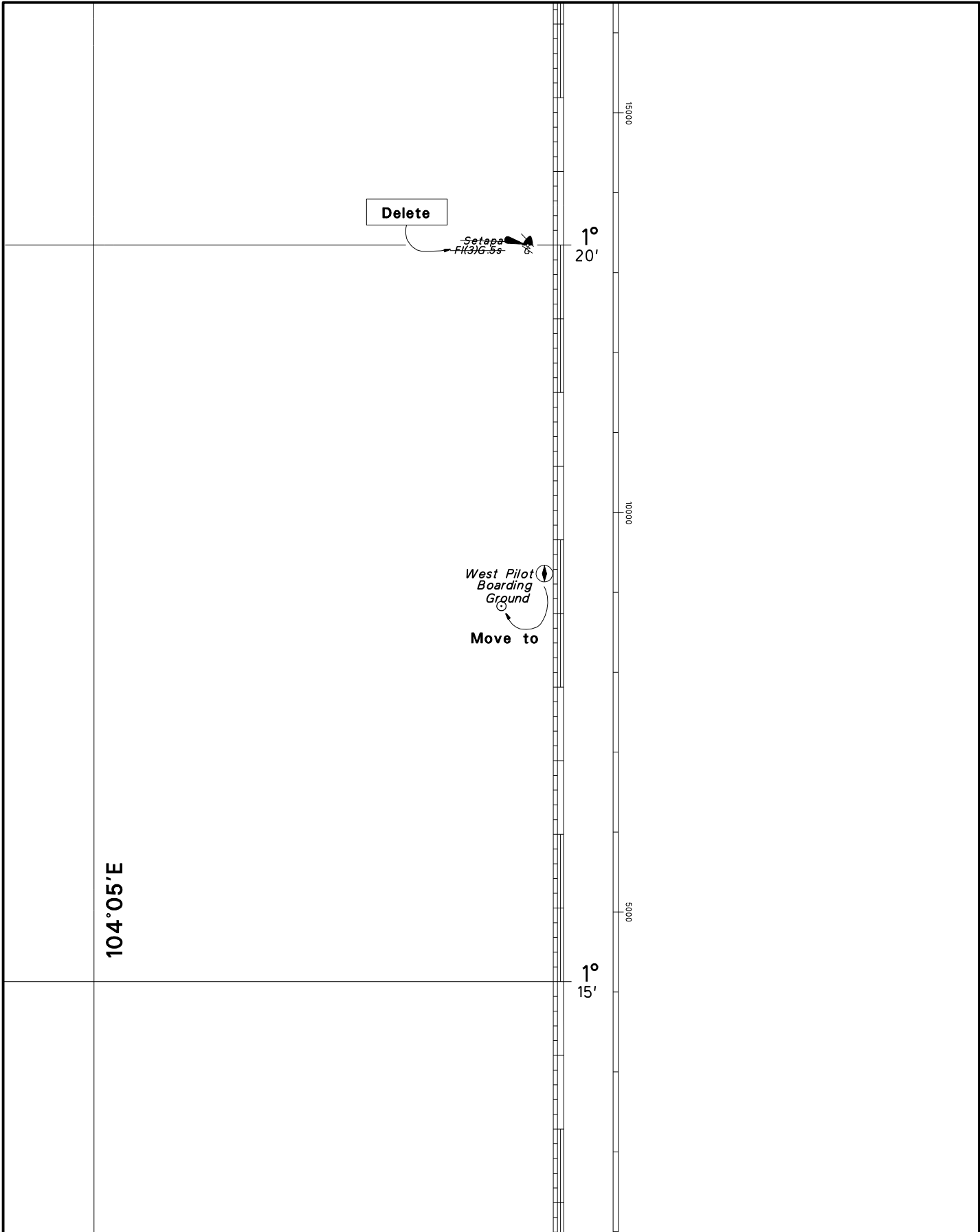
Name and Signature :

Ship's/Company's Stamp :

<div style="position: absolute; top: 10px; right: 10px; transform: rotate(90deg);">103°45'E</div> <div style="position: absolute; bottom: 10px; left: 10px;">1°15'N</div> <div style="position: absolute; top: 50%; left: 50%; transform: translate(-50%, -50%);">  </div>		<div style="position: absolute; top: 10px; right: 10px; transform: rotate(90deg);">103°45'E</div> <div style="position: absolute; bottom: 10px; left: 10px;">1°15'N</div> <div style="position: absolute; top: 50%; left: 50%; transform: translate(-50%, -50%);">  </div>		
CORRECTION NO.	SNM EDN NO.	LAST CORRNO NO.	CHART NO.	Location on Chart
71	9/2018	70/2018	GSP1/SP1	X

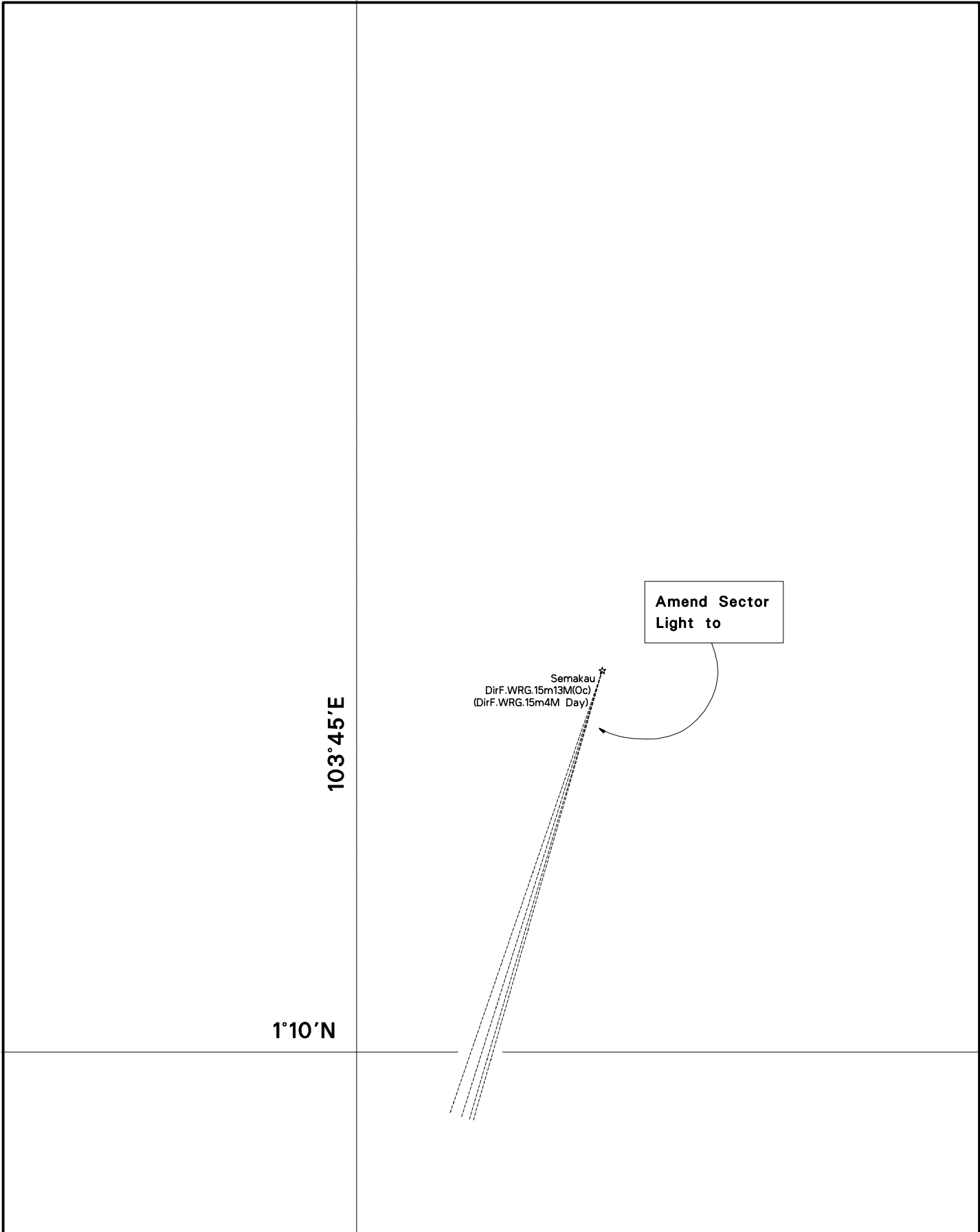
<div style="position: absolute; top: 10px; right: 10px; transform: rotate(90deg);">103°45'E</div> <div style="position: absolute; bottom: 10px; left: 10px;">1°10'N</div> <div style="position: absolute; top: 50%; left: 50%; transform: translate(-50%, -50%);">  </div>		<div style="position: absolute; top: 10px; right: 10px; transform: rotate(90deg);">103°45'E</div> <div style="position: absolute; bottom: 10px; left: 10px;">1°10'N</div>		
CORRECTION NO.	SNM EDN NO.	LAST CORRNO NO.	CHART NO.	Location on Chart
67	9/2018	63/2018	GSP1/SP1	X

Caution: some computer printers might distort the tracings.
Users are advised to check and, if necessary, adjust settings on the printer



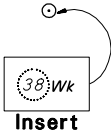
CORRECTION NO.	SNM EDN NO.	LAST CORR N NO.	CHART NO.	Location on Chart		
68, 69/2018	9/2018	67/2018	GSP1/SP1			X

Caution: some computer printers might distort the tracings.
Users are advised to check and, if necessary, adjust settings on the printer



CORRECTION NO.	SNM EDN NO.	LAST CORR N NO.	CHART NO.	Location on Chart		
72	9/2018	71/2018	GSP1/SP1		X	

Caution: some computer printers might distort the tracings.
Users are advised to check and, if necessary, adjust settings on the printer

		<div style="text-align: center;">  </div>		
		<div style="display: flex; justify-content: space-between; align-items: center;"> <div style="writing-mode: vertical-rl; transform: rotate(180deg);">103°40'E</div> <div style="writing-mode: vertical-rl; transform: rotate(180deg);">1°00'N</div> </div>		
CORRECTION NO.	SNM EDN NO.	LAST CORR N NO.	CHART NO.	Location on Chart
67	9/2018	33/2018	202	<div style="display: flex; justify-content: space-between;"> <div>X</div> <div></div> <div></div> </div>

<p>Diagram illustrating corrections to East Pilot (A) and West Pilot. East Pilot (A) is to be inserted, East Pilot (B) is to be deleted, and West Pilot is to be moved to a new position.</p>				104°20'E		
				1°20'N		
CORRECTION NO.	SNM EDN NO.	LAST CORR NO.	CHART NO.	Location on Chart		
68	9/2018	67/2018	202		X	

Caution: some computer printers might distort the tracings.
Users are advised to check and, if necessary, adjust settings on the printer

		103°40'E		
		1°15'N		
		<div><div>Delete</div><div><div><div>U</div><div>R</div></div><div>Serebut RacontG FI(2)R.10M</div></div></div>		
CORRECTION NO.	SNM EDN NO.	LAST CORRNO NO.	CHART NO.	Location on Chart
71	9/2018	67/2018	500	<div><div></div><div></div><div>X</div></div>

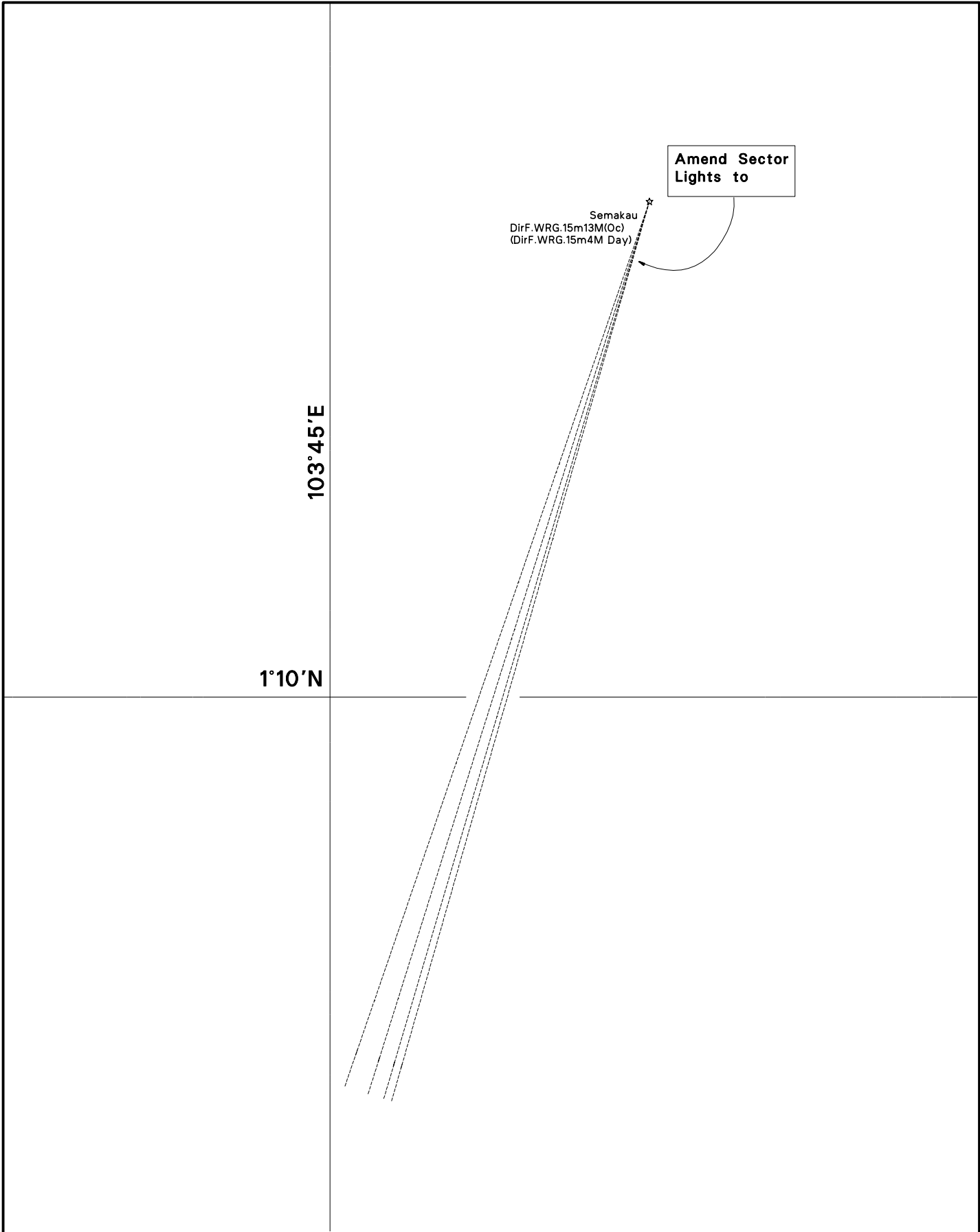
		103°40'E		
		1°10'N		
		<div><div>Insert</div><div><div>39Wk</div></div></div>		
CORRECTION NO.	SNM EDN NO.	LAST CORRNO NO.	CHART NO.	Location on Chart
67	9/2018	62/2018	500	<div><div></div><div></div><div>X</div></div>

Caution: some computer printers might distort the tracings.
Users are advised to check and, if necessary, adjust settings on the printer

				1°10'N		
				103°45'E		
<div>Insert</div> <div><div>38Wk</div></div>						
CORRECTION NO.	SNM EDN NO.	LAST CORR N NO.	CHART NO.	Location on Chart		
67	9/2018	63/2018	501		X	

				1°15'N		
				103°45'E		
<div>Delete</div> <div><div><div>SR</div></div>Serebut FI(2)R.10M Racen(G)</div>						
CORRECTION NO.	SNM EDN NO.	LAST CORR N NO.	CHART NO.	Location on Chart		
71	9/2018	67/2018	501		X	

Caution: some computer printers might distort the tracings.
Users are advised to check and, if necessary, adjust settings on the printer



CORRECTION NO.	SNM EDN NO.	LAST CORR N NO.	CHART NO.	Location on Chart		
					X	
72	9/2018	71/2018	501			

Caution: some computer printers might distort the tracings.
Users are advised to check and, if necessary, adjust settings on the printer

104°15'E

1°20'N

Delete

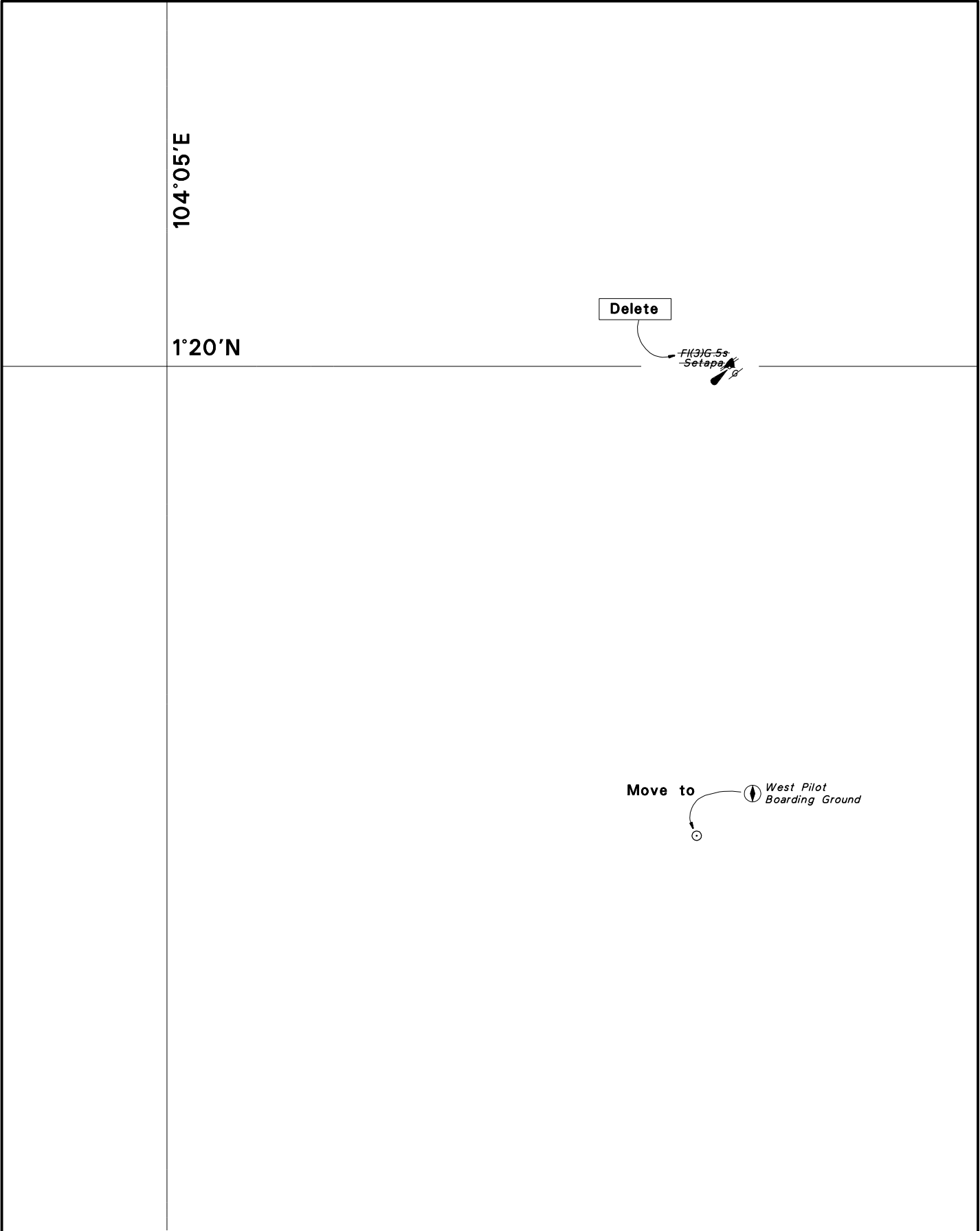
~~East Pilot
Boarding Ground~~

Insert

East Pilot
Boarding Ground (B)

CORRECTION NO.	SNM EDN NO.	LAST CORR N NO.	CHART NO.	Location on Chart		
68	9/2018	63/2018	502			X

Caution: some computer printers might distort the tracings.
Users are advised to check and, if necessary, adjust settings on the printer



CORRECTION NO.	SNM EDN NO.	LAST CORR N NO.	CHART NO.	Location on Chart		
68, 69	9/2018	63/2018	502		X	

Caution: some computer printers might distort the tracings.
Users are advised to check and, if necessary, adjust settings on the printer

<div style="position: relative; width: 100%; height: 100%;"> <div style="position: absolute; top: 10%; left: 30%; font-size: 24px; font-weight: bold;">1°20'N</div> <div style="position: absolute; top: 20%; left: 40%; transform: rotate(-90deg); font-size: 24px; font-weight: bold;">104°15'E</div> <div style="position: absolute; top: 10%; left: 48%; border: 1px solid black; padding: 2px; font-size: 10px;">Delete</div> <div style="position: absolute; top: 15%; left: 62%; border: 1px solid black; padding: 2px; font-size: 8px;"> Insert <i>East Pilot Boarding Ground (A)</i> </div> <div style="position: absolute; top: 18%; left: 11%; border: 1px solid black; padding: 2px; font-size: 8px;"> Insert <i>East Pilot Boarding Ground (B)</i> </div> <div style="position: absolute; top: 15%; left: 36%; font-size: 8px;"> East Pilot Boarding Ground </div> </div>		<div style="display: flex; justify-content: space-between; font-size: 8px; font-weight: bold;"> CORRECTION NO. SNM EDN NO. LAST CORR N NO. CHART NO. </div> <div style="display: flex; justify-content: space-between; font-size: 14px; font-weight: bold; margin-top: 5px;"> 68 9/2018 33/2018 503 </div>		
<div style="display: flex; justify-content: space-between; font-size: 8px; font-weight: bold;"> Location on Chart </div> <div style="display: flex; justify-content: space-between; font-size: 14px; font-weight: bold; margin-top: 5px;"> X </div>				

<div style="position: relative; width: 100%; height: 100%;"> <div style="position: absolute; top: 55%; left: 57%; transform: rotate(-90deg); font-size: 24px; font-weight: bold;">104°25'E</div> <div style="position: absolute; top: 65%; left: 57%; font-size: 24px; font-weight: bold;">1°20'N</div> <div style="position: absolute; top: 64%; left: 38%; border: 1px solid black; padding: 2px; font-size: 10px;">Delete</div> <div style="position: absolute; top: 68%; left: 40%; font-size: 8px;"> Racon(0) Fl.10s31m20M HORSBURGH LIGHTHOUSE TR(50) AIS </div> </div>		<div style="display: flex; justify-content: space-between; font-size: 8px; font-weight: bold;"> CORRECTION NO. SNM EDN NO. LAST CORR N NO. CHART NO. </div> <div style="display: flex; justify-content: space-between; font-size: 14px; font-weight: bold; margin-top: 5px;"> 71 9/2018 68/2018 503 </div>		
<div style="display: flex; justify-content: space-between; font-size: 8px; font-weight: bold;"> Location on Chart </div> <div style="display: flex; justify-content: space-between; font-size: 14px; font-weight: bold; margin-top: 5px;"> X </div>				

Caution: some computer printers might distort the tracings.
 Users are advised to check and, if necessary, adjust settings on the printer