



SINGAPOREAN NOTICES TO MARINERS

	CONTENT	Page
I	Index of Charts & Publications Affected	109
II	Charts Corrections New Charts Publications	110
III	Marine Information	117
IV	Reprints of Radio Navigational Warnings	118
V	Reprint of Admiralty Notices to Mariners for Dual Badged Charts	119

The monthly Notices to Mariners contain corrective information affecting charts published by the Hydrographic Department, Maritime and Port Authority of Singapore. The information contained in these Notices should be inserted on the charts affected. Notices under Section II apply only to the particular Singapore Chart(s) indicated.

Mariners are requested to notify the Chief Hydrographer, Maritime and Port Authority of Singapore, immediately on the discovery of new dangers or suspected dangers to navigation and of changes or defects in aids to navigation.

Copies of these notices can be obtained gratis from the Hydrographic Department, Maritime and Port Authority of Singapore or from Motion Smith. The notices can be access from MPA webpage.

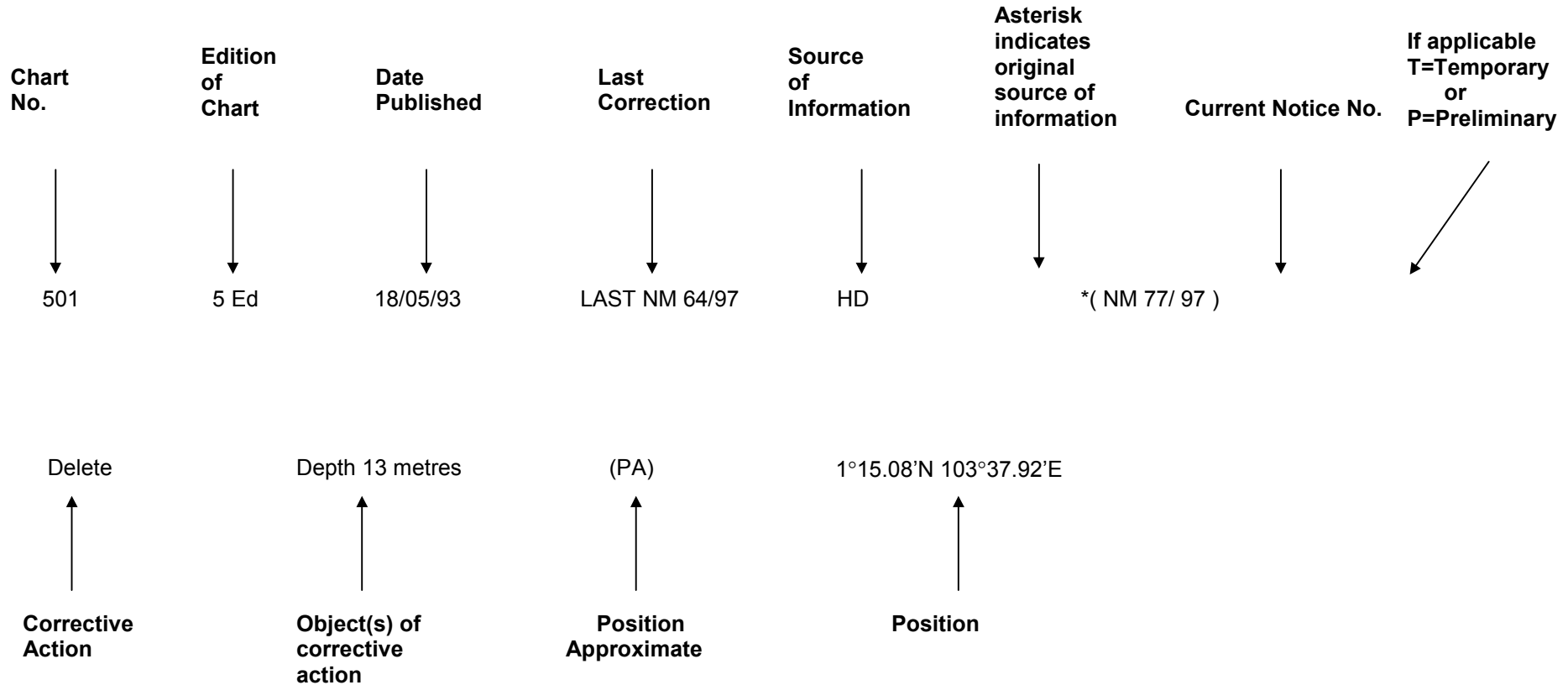
Hydrographic Department
Maritime and Port Authority of Singapore
P.O. Box 313
PSA Building Post Office
Singapore 911141

Tel : (65) 63751600
Fax : (65) 62787646
Webpage : www.mpa.gov.sg/homepage/publications/noticesmari.html
Hot line : (65) 63751550

WILSON CHUA
Chief Hydrographer

EXPLANATION OF FORMAT

The elements of a typical chart correction are explained below.



An asterisk (*) preceding a notice number indicates that the information is based on original Singapore source. The capital letter (T) or (P) denotes Temporary or Preliminary respectively.

Bearings are referred to the True Compass in degrees clockwise from 000° to 359°; those related to lights are from seaward. Heights are above mean sea level; only elevations of lights are above mean higher high water, or mean high water springs, as appropriate

SECTION I
INDEX OF CHARTS AND PUBLICATIONS AFFECTED

NOTICES	SINGAPOREAN CHARTS	PAGE	NOTICES	SINGAPOREAN CHARTS	PAGE
*73	Dual Badged Charts to be published	110			
*74	Singaporean Charts to be permanently withdrawn	112			
*75	New Publication	112			
76	202	113			
	501	113			
	502	115			
77	202	113			
	502	115			
*78	202	113			
	501	113			
*79	501	114			
*80	501	114			
81	501	114			
	502	115			
*82	501	114			
*83P	116	116			
*84	117	117			

**SECTION II
SINGAPORE NOTICES**

***(NM73/2002) DUAL BADGED CHARTS TO BE PUBLISHED ON 26TH SEPTEMBER 2002.**

(Previous NM 8/70P/2002 is cancelled)

NEW CHARTS

CHARTS	TITLE, LIMITS AND OTHER REMARKS	SCALE	PRICE (Excluding GST)
4038	MALAYSIA AND SINGAPORE JOHOR STRAIT - WESTERN PART Lat. 1°10.80'N - Lat. 1°28.70'N Long. 103°28.60'E - Long. 103°40.70'E	1:30 000	S\$45.00
4039	INDONESIA, SINGAPORE AND MALAYSIA WESTERN APPROACHES TO MAIN STRAIT Lat. 1°01.50'N - Lat. 1°13.70'N Long. 103°31.20'E - Long. 103°49.00'E	1:30 000	S\$45.00
4040	SINGAPORE, INDONESIA AND MALAYSIA TUAS VIEW TO PULAU SAKIJANG BENDERA (S. John's Island) Lat. 1°07.40'N - Lat. 1°19.60'N Long. 103°34.10'E - Long. 103°51.90'E	1:30 000	S\$45.00
4041	SINGAPORE AND INDONESIA PULAU SEBAROK TO CHANGI Lat. 1°07.40'N - Lat. 1°19.60'N Long. 103°46.90'E - Long. 104°04.70'E	1:30 000	S\$45.00
4042	INDONESIA, MALAYSIA AND SINGAPORE CHANGI TO PULAU MUNGGING Lat. 1°09.55'N - Lat. 1°21.75'N Long. 104°01.70'E - Long. 104°19.50'E	1:30 000	S\$45.00
4043	MALAYSIA AND SINGAPORE KUALA JOHOR AND SUNGAI JOHOR Lat. 1°16.10'N - Lat. 1°34.00'N Long. 103°57.90'E - Long. 104°10.00'E	1:30 000	S\$45.00
4044	SINGAPORE AND MALAYSIA JOHOR STRAIT EASTERN PART Lat. 1°19.00'N - Lat. 1°31.20'N Long. 103°45.60'E - Long. 104°03.40'E	1:30 000	S\$45.00

The above dual badged charts will be in force from 0000 hours UT 15th October 2002.

**SECTION II
SINGAPORE NOTICES**

NEW EDITION CHARTS

CHARTS	TITLE, LIMITS AND OTHER REMARKS	SCALE	PRICE (Excluding GST)
4030	PORT OF SINGAPORE WEST JURONG ANCHORAGES AND FAIRWAYS Lat. 1°11.05'N - Lat. 1°17.00'N Long. 103°36.70'E - Long. 103°40.70'E	1:10 000	S\$45.00
Remarks:	The new edition chart includes new surveys at West Jurong Channel and northern portion of Temasek Fairway. The existing chart of the same number published on 27/09/01 is obsolete.		
4031	PORT OF SINGAPORE SOUTH JURONG ISLAND AND ITS APPROACHES Lat. 1°10.15'N - Lat. 1°16.12'N Long. 103°38.50'E - Long. 103°42.53'E	1:10 000	S\$45.00
Remarks:	The new edition chart shows new VLCC berths at Jurong Island, changes to the Sinki Traffic Separation Scheme, the new demarcation of Sinki Fairway and new working area at Banyan Basin. The existing chart of the same number published on 27/09/01 is obsolete.		
4032	PORT OF SINGAPORE SINKI FAIRWAY Lat. 1°12.25'N - Lat. 1°16.30'N Long. 103°40.20'E - Long. 103°46.13'E	1:10 000	S\$45.00
Remarks:	The new edition chart shows new VLCC berths at Jurong Island, changes to the Sinki Traffic Separation Scheme, the new demarcation of Sinki Fairway and new working area at Banyan Basin. The existing chart of the same number published on 27/09/01 is obsolete.		

Chart corrections affecting the Dual Badged charts will be published in the Admiralty Notices to Mariners and Singaporean Notices to Mariners.

**SECTION II
SINGAPORE NOTICES**

***(NM74/2002) SINGAPOREAN CHARTS TO BE PERMANENTLY WITHDRAWN ON 15th OCTOBER 2002 AT 0000 HOURS UT.**

(Previous NM No. 8/71P/2002 is cancelled)

CHARTS	MAIN TITLE
100	Singapore Strait, Approaches to Tuas
112	East Johor Strait, Approaches to Sembawang Wharves
113	East Johor Strait, Pulau Ubin to Pulau Seletar
114	East Johor Strait, Serangoon Harbour
300	West Johor Strait and Its Approaches
301	Western Approaches to Singapore
302	Western Approaches to Singapore
303	Approaches to East Johor Strait
304	East Johor Strait

***(NM75/2002) NEW PUBLICATION.**





Title	:	Year 2003 Singapore Tide Tables and Port Information
Content	:	<ul style="list-style-type: none"> a) Daily prediction of tidal heights and tidal streams for 21 stations within the Port of Singapore and Singapore Strait. b) The IMO adopted Routeing System and details of the Traffic Separation Scheme in the Straits of Malacca and Singapore. c) The IMO adopted Mandatory Ship Reporting System in the Straits of Malacca and Singapore. d) Information relating to port operations in the Singapore Port Waters such as; pilotage, port clearance formalities, safety of navigation and certain rules and regulations which are of interest to port users. e) Information on depths in navigational channels, depths at wharves and berths, IALA Maritime Buoyage System, characteristics of aids to navigation, the Singaporean chart catalogue and the Dual Badged Chart catalogue.
Price	:	S\$26.00
(Excluding GST)		

**SECTION II
SINGAPORE NOTICES**

202	3Ed 02/01/02 Last NM 68/2002	HD/DB34/44-02	(NM76/2002)
Insert	Symbol of Radar Reflector on Batu Berhanti light-beacon, Takong light-buoy Takong light-beacon	1°11.08' N 1°05.82' N 1°05.90' N	103°52.98' E 103°43.68' E 103°43.25' E
Substitute	Colour of structure of Helen Mar Reef light- beacon, W for BY	1°07.44' N	103°46.51' E
		BAC 3833	(NM77/2002)
Substitute	Light character LFl.10s for Fl.10s, Safe Water mark light buoy at Batu Ampar	1°10.21' N	103°58.93' E
		HD/Job No. 28N/02	*(NM78/2002)
Substitute	Depth over wreck 10₂ metres for 9 ₃ metres	1°14.18' N	103°39.15' E

501	2Ed 15/11/00 Last NM 68/2002	HD/DB34/44-2002	(NM76/2002)
Insert	Symbol of Radar Reflector on Batu Berhanti light-beacon, Takong light-buoy Takong light-beacon	1°11.08' N 1°05.82' N 1°05.90' N	103°52.98' E 103°43.68' E 103°43.25' E
Substitute	Colour of structure of Helen Mar Reef light- beacon, W for BY	1°07.44' N	103°46.51' E
		HD/Job No.28N/2002	*(NM78/2002)
Substitute	Depth over wreck 10₂ metres for 9 ₃ metres	1°14.18'N	103°39.15'E

**SECTION II
SINGAPORE NOTICES**

		PMN No. 59 of 2002	*(NM79/2002)
Delete	Pecked line joining positions	1°14.00' N	103°41.19' E
		1°14.46' N	103°41.66' E
		1°15.31' N	103°41.36' E
		1°15.32' N	103°41.31' E
Relocate	Yellow  Fl(3)Y.15s (1°14.36'N, 103°41.72' E)	1°14.38' N	103°41.58' E
	Yellow  Fl.Y.2s (1°14.88'N, 103°41.51' E)	1°14.88' N	103°41.43' E
Insert	Pecked line joining positions	1°14.00' N	103°41.19' E
		1°14.38' N	103°41.58' E
		1°15.61' N	103°41.23' E
		1°15.50' N	103°41.11' E
		PMN No. 60 of 2002	*(NM80/2002)
Insert	Pecked line joining positions Green conical light buoy, Fl.G	1°15.09' N	103°41.82' E
		1°15.02' N	103°41.84' E
		1°14.91' N	103°41.59' E
		1°15.91' N	103°41.31' E
		HD/DB34/49/2002	(NM81/2002)
Substitute	Visibility range of light beacon at Pulau Mariam 8M for 4M	1°08.90' N	103°54.38' E
		HD/DB34/48-02	*(NM82/2002)
Delete	 	1°12.10' N	103°44.70' E
		1°12.08' N	103°44.77' E

**SECTION II
SINGAPORE NOTICES**

502	2Ed 15/11/00 Last NM 68/2002	HD/DB34/44-2002	*(NM76/2002)
Insert	Symbol of Radar Reflector on Batu Berhanti light-beacon	1°11.08' N	103°52.98' E
		BAC 3833	(NM77/2002)
Substitute	Light character LFl.10s for Fl.10s of Safe Water mark light buoy at Batu Ampar	1°10.21' N	103°58.93' E
		HD/DB34/49/2002	(NM81/2002)
Substitute	Visibility range of light beacon at Pulau Mariam 8M for 4M	1°09.02' N	103°54.40' E

**SECTION II
TEMPORARY AND PRELIMINARY NOTICES**

***(NM83P/2002) NEW EDITION SINGAPOREAN CHARTS TO BE PUBLISHED SOON.**

CHARTS	TITLE, LIMITS AND OTHER REMARKS	SCALE
SP1	ANCHORAGES AND AIDS TO NAVIGATION Lat. 1°08.20'N - Lat. 1°29.40'N Long. 103°36.10'E - Long. 104°07.20'E	1:60 000
GSP1	ANCHORAGES AND AIDS TO NAVIGATION (WITH AREA REFERENCE) Lat. 1°08.20'N - Lat. 1°29.40'N Long. 103°36.10'E - Long. 104°07.20'E	1:60 000
500	MALACCA AND SINGAPORE STRAITS- PULAU PISANG TO RAFFLES LIGHTHOUSE Lat. 1°04.05'N - Lat. 1°30.50'N Long. 103°05.80'E - Long. 103°44.61'E	1:75 000

**SECTION III
MARINE INFORMATION*****(NM84 /2002) VHF CHANNEL 74 - TO REQUEST FOR IMMIGRATION CLEARANCE**

1 With effect from 1 Sep 2002, all vessels requesting immigration clearance are to call VHF Channel 74 instead of Channel 14.

2 Singapore Immigration & Registration has assigned the following call signs for the respective anchorages, as follows:

- | | | |
|-----|-----------------------|--|
| (a) | “Western Immigration” | { For vessels anchored at Western Quarantine & Immigration Anchorage and Western Petroleum B Anchorage |
| (b) | “Jurong Immigration” | { For vessels anchored at LNG/LPG/Chemical Gas Carrier Anchorage, West Jurong Anchorage and Sudong Special Purpose Anchorage |
| (c) | “Changi Immigration” | { For vessels anchored at Changi General Purposes Anchorage |

3 For clarification and enquiries on immigration matters, please contact the Seamen’s Section at Tel: 63916477/78, Fax: 62936753/8.

SECTION IV
REPRINT OF RADIO NAVIGATIONAL WARNINGS

Nil

**SECTION V
REPRINT OF ADMIRALTY NOTICES TO MARINERS
FOR DUAL BADGED CHART**

ADMIRALTY CHARTS AND PUBLICATIONS TO BE PUBLISHED

REVISED PUBLICATION DATES

Admiralty Charts

<i>Chart</i>	<i>Previously announced Publication Date</i>	<i>Revised Publication Date</i>	<i>Remarks</i>
4038	25 July 2002	-	A revised publication date will be announced in due course.
4039	25 July 2002	-	A revised publication date will be announced in due course.
4040	25 July 2002	-	A revised publication date will be announced in due course.
4041	25 July 2002	-	A revised publication date will be announced in due course.
4042	25 July 2002	-	A revised publication date will be announced in due course.
4043	25 July 2002	-	A revised publication date will be announced in due course.
4044	25 July 2002	-	A revised publication date will be announced in due course.

3066*/02 SINGAPORE STRAIT – Singapore – Pulau Semakau Southwestwards – Mooring buoy

Delete  1°12'.019N., 103°44'.881E.

Chart [*Last correction*]. – 4036 [1967/02]

3067*/02 SINGAPORE STRAIT – Singapore – Jurong Island Southwestwards – Depth

Delete Depth 22₈ m 1°12'.112N., 103°39'.930E.

Chart [*Last correction*]. – 4030 [1968/02] – 4031 [1969/02]

3068*/02 SINGAPORE STRAIT – Singapore – Pulau Sudong Northeastwards – Selat Pauh – Mooring buoy

Insert  BOS-1 1°13',350N., 103°44'.380E.

Chart [*Last correction*]. – 4032 [1968/02]

SECTION V
REPRINT OF ADMIRALTY NOTICES TO MARINERS
FOR DUAL BADGED CHART

3069*/02 SINGAPORE STRAIT – Singapore – Tuas View Southwestwards – Works; Buoyage

Insert	Limit of works area, pecked line, joining:	(a) 1°15'.163N., (existing limit)	103°36'.980E.
		(b) 1°15'.100N.,	103°37'.010E. (scale)
		(c) 1°14'.232N	103°37'.422E. (buoy)
		(d) 1°14'.230N	103°37'.340E.
Delete	Former limit of works area, pecked line, joining	(e) (a) above	
		(f) 1°15'.138N.,	103°36'.930E.

Chart [*Last correction*]. – **4030** (a,c,d,e,f) [3067/02] - **4033** (a,c,e,f) [820/02]

3070*/02 SINGAPORE STRAIT – Singapore – Pulau Damar Laut Basin – Dredged depths

Amend	dredged depth to, 13.3m (2002), centred on:	1°18'.180N.,	103°43'.135E.
	dredged depth to, 13.4m (2002), centred on:	1°18'.255N.,	103°43'.050E.
		1°18'.325N.,	103°42'.970E.

Chart [*Last correction*]. – **4034** [1966/02]

3071*/02 SINGAPORE STRAIT – Singapore – Pulau Sakijang Pelepah - Works

Insert	Limit of works area, pecked line, joining:	(a) 1°13'.449N., (existing limit)	103°51'.401E.
		1°13'.293N.,	103°51'.195E. (shore)
		1°13'.142N.,	103°51'.095E. (shore)
		and	
		1°13'.289N.,	103°50'.986E. (shore)
		(b) 1°13'.474N., (existing limit)	103°51'.029E.
Amend	Legend to, <i>Works in progress</i> (2002), centred on:	1°13'.658N.,	103°51'.133E.
	Former limit of works area, pecked line, joining:	(a) above	
		1°13'.431N.,	103°51'.373E. (shore)
		and	
		1°13'.314N.,	103°51'.181E. (shore)
		1°13'.373N.,	103°51'.078E.
		(b) above	

Chart [*Last correction*]. – **4037** [1971/02]

Source : Weekly Edition 29, dated 18th July 2002

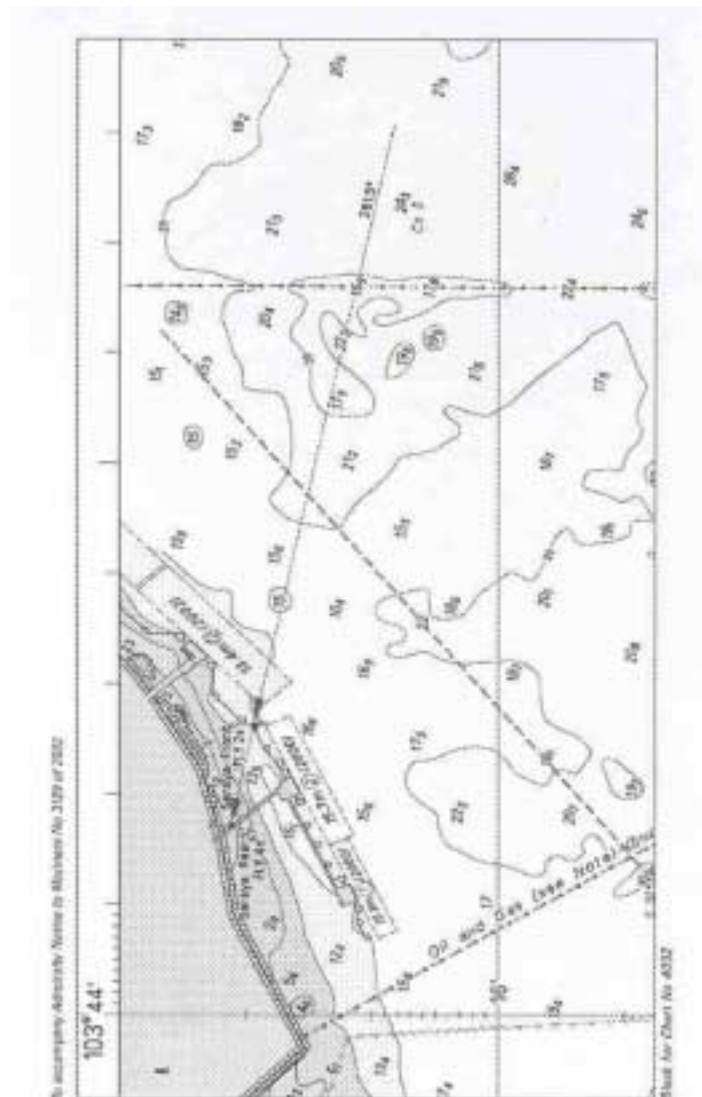
SECTION V
REPRINT OF ADMIRALTY NOTICES TO MARINERS
FOR DUAL BADGED CHART

3129*/02 SINGAPORE STRAIT – Singapore – Jurong Island, East Coast – Jetties: Depths: Works: Light

Insert	the accompanying block, showing amendments to jetties, and depths and works area, centred on:	(a) 1°16'.103N.,	103°44'.405E.
	the accompanying block, showing amendments to jetties, and depths and works area, centred on:	(a) 1°16'.267N.,	103°44'.405E.

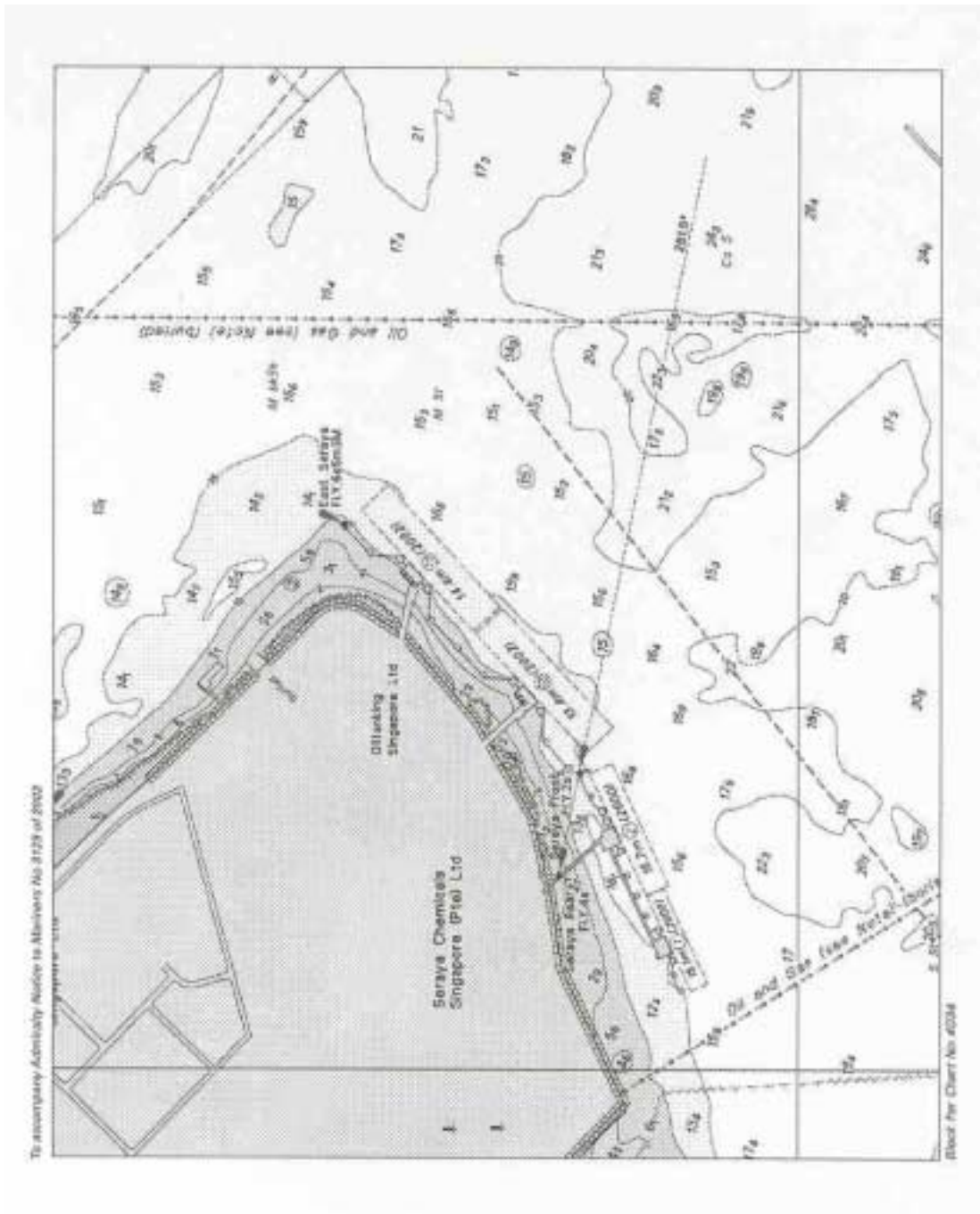
Chart [*Last correction*]. – **4032** (a) [3068/02] – **4034** (b) [3070/02]

NOTE : This block correction is for illustration only. The actual block correction can be obtained from Admiralty Notices to Mariners Weekly Edition 30.



SECTION V REPRINT OF ADMIRALTY NOTICES TO MARINERS FOR DUAL BADGED CHART

NOTE : This block correction is for illustration only. The actual block correction can be obtained from Admiralty Notices to Mariners Weekly Edition 30.



Source: Weekly Edition 30, dated 25th July 2002

HYDROGRAPHIC NOTE

Date

Ref. No

Name of vessel or address of sender:

.....
.....
.....

General locality:

Subject:

Approx.Position: Lat..... Long

Charts affected:.....

Latest Notices to Mariners held

Publications affected (Edition No. and date of latest supplement)

.....
.....

Details:-

.....
.....
.....
.....
.....

Signature of

Observer/Reporter: Ship's stamp

INSTRUCTION

Mariners are requested to notify the Chief Hydrographer, Maritime and Port Authority of Singapore, when new or suspected dangers to navigation are discovered, changes observed in aids to navigation or corrections to nautical publications seem to be necessary.

2. The instructions below should be followed as closely as possible to facilitate easy interpretation of information.
3. A position which is fixed by sextant angles, radar ranges or bearings (true or magnetic) should include more than two objects in order to provide a check on its accuracy. When there is a series of fixes along a ship's track only the method of fixing and the objects used need to be indicated. A position may also be defined by bearing and distance from a conspicuous object eg. beacon, lighthouse etc.
4. A report should include a tracing of the largest scale chart and the details should be marked in red; adequate information must be traced in black ink to enable the amendments to be fitted correctly.
5. The method in which soundings are taken should be stated. In case of echo sounding, the trace should be marked with date, times, depths etc. and forwarded with the report. It is important to state whether the echo sounder is set to register depths below the surface or below the keel; in the latter case the vessel's draught at the time of observation should be given. The make, name and type of set should also be stated.
6. Modern echo sounders frequently register greater depths than the advertised maximum for the set, eg. with a set whose maximum is 500 metres, a trace appearing at 50 metres may in fact be 550 metres or even 1050 metres. Erroneous deep soundings caused by 2nd transmission error can usually be recognised by the following:-
 - (a) the tracing being weaker than normal for the depth registered,
 - (b) the trace appearing to pass through the transmission line,
 - (c) the feathery nature of the trace.
7. Reports which cannot be confirmed or are lacking in certain details should not be withheld. Shortcomings should be stressed and any firm expectation of being able to check the information on a succeeding voyage should be mentioned.
8. Reports of shoal soundings, uncharted dangers and defects in aids to navigation may, at the mariner's discretion, be made by radio to Singapore Port Operations on VHF Channels 12 or 20 or to Chief Hydrographer, Maritime and Port Authority of Singapore, through Singapore Radio, call-sign 9VG, by wireless telegraphy.

Note:-

An acknowledgement of receipt will be sent and the information then used to the best advantage. When a Notice to Mariners is issued the sender's vessel or name is quoted as authority unless the same information is also received in a foreign Notices to Mariners. Further communication should be expected only if the information is of outstanding value or has unusual features.