



SINGAPOREAN NOTICES TO MARINERS

SECTION	CONTENT	Page
I	Affected Charts & Publications	1
II	New Charts & Publications	2
	Notices to Mariners and Chart Corrections	7
	Temporary and Preliminary Notices	8
	Cancelled Temporary and Preliminary Notices	11
III	Navigational Information	12
	Amendments to Publications	13
IV	Reprint of Maritime Safety Information	15
V	Extract of Admiralty Notices to Mariners for Dual-Badged Charts	17

The monthly Notices to Mariners contain information required to keep charts and publications published by the Hydrographic Division, Maritime and Port Authority of Singapore up-to-date.

Mariners are requested to notify the Chief Hydrographer, Maritime and Port Authority of Singapore, immediately of the discovery of new or suspected dangers to navigation, observed changes to aids to navigation and ways Singaporean Charts and Publications can be improved. The Hydrographic Note on the back page should be used for this purpose.

Detailed information of charts and publications (coverage of charts, latest editions and distributors) are available on the Maritime and Port Authority Website: www.mpa.gov.sg

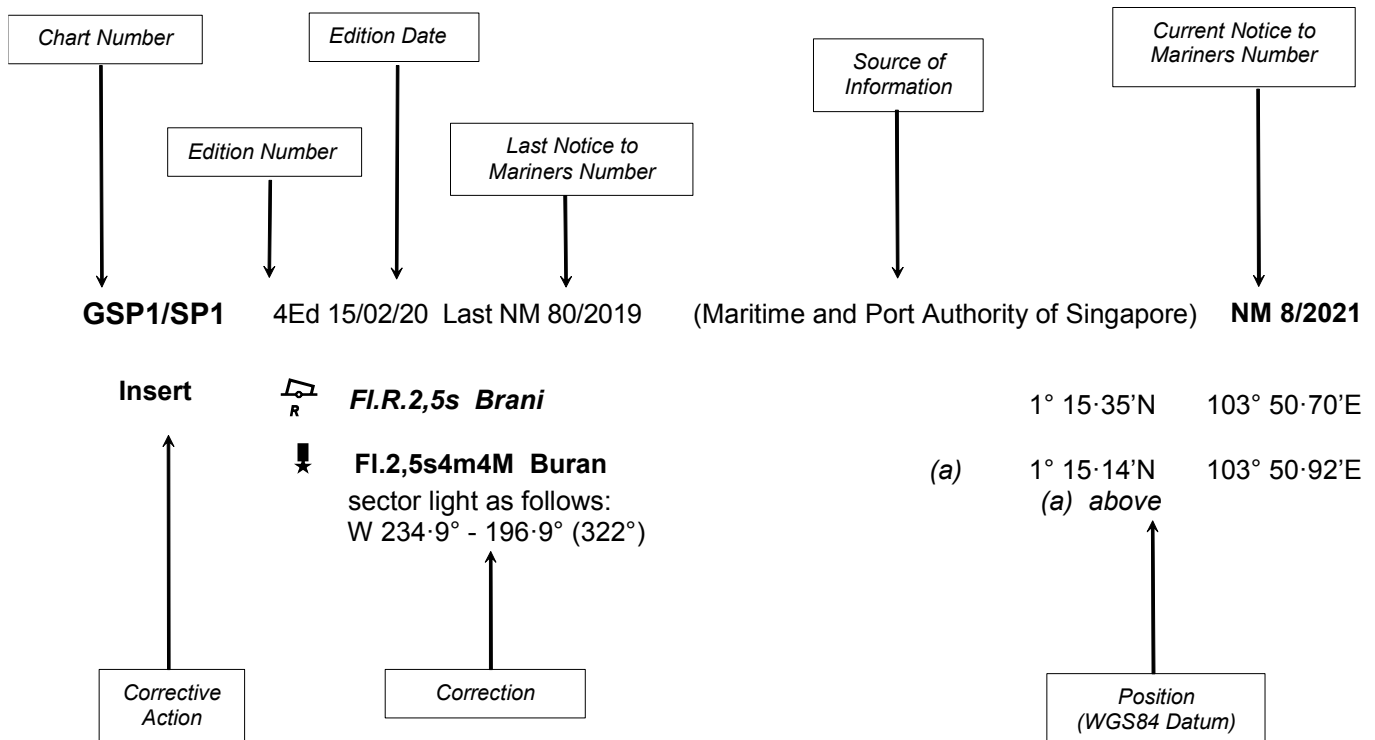
- [Singaporean Notice to Mariners](#)
- [Singaporean Charts](#)
- [Dual-Badged Charts](#)
- [Singapore ENC](#)
- [Malacca and Singapore Straits ENC](#)
- [Singapore Port Information](#)
- [Singapore Tide Tables](#)

Contact information:

Hydrographic Division
Maritime and Port Authority of Singapore
7B Keppel Road
#20-00 Tanjong Pagar Complex
Singapore 089055
Tel : 1800 272 7777 / (65) 6272 7777
Fax : (65) 6226 1076
Email : hydrographic@mpa.gov.sg

EXPLANATION OF FORMAT

The elements of a typical chart correction are explained below.



Notes:

- Notice to Mariners number followed by:
T indicates a Temporary Notice (eg. **NM 9T/2021**).
P indicates a Preliminary Notice (eg. **NM 10P/2021**).
- Bearings are true reckoned clockwise from 000° to 359°; those relating to lights are from seaward.
- Heights and elevations are above Mean High Water Springs.
- # indicates where amendments are made.
- * indicates source from Maritime and Port Authority of Singapore.

I
AFFECTED CHARTS AND PUBLICATIONS

INDEX OF NOTICES

NOTICE NO.	DESCRIPTION	PAGE NO.
-	New Charts and Publications	2 - 6
*79,*80,81	Singaporean Chart GSP1/SP1	7
82	Singaporean Chart 201	7
82	Singaporean Chart 202	7
82	Singaporean Chart 500	7
*80	Singaporean Chart 502	7
*83T,*84P,*85T, 86T,87P	Temporary and Preliminary Notices	8 - 10
*88	Singapore Port Marine Notices/Circulars	12
*89	Amendments to Publications	13 - 14
-	Reprint of Maritime Safety Information	15 - 16
-	Extract of Admiralty Notices to Mariners for Dual-Badged Charts	17

*Source: Maritime and Port Authority of Singapore

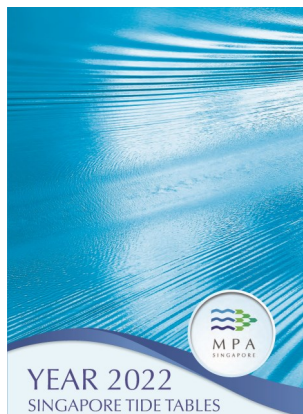
II

NEW CHARTS AND PUBLICATIONS

SINGAPORE TIDE TABLES YEAR 2022 TO BE PUBLISHED ON 15TH SEPTEMBER 2021

Summary of Publication

This publication contains Tidal Height and Tidal Stream Predictions covering stations in Singapore Port Waters and along the Straits of Malacca and Singapore.



This publication consists of 5 segments.

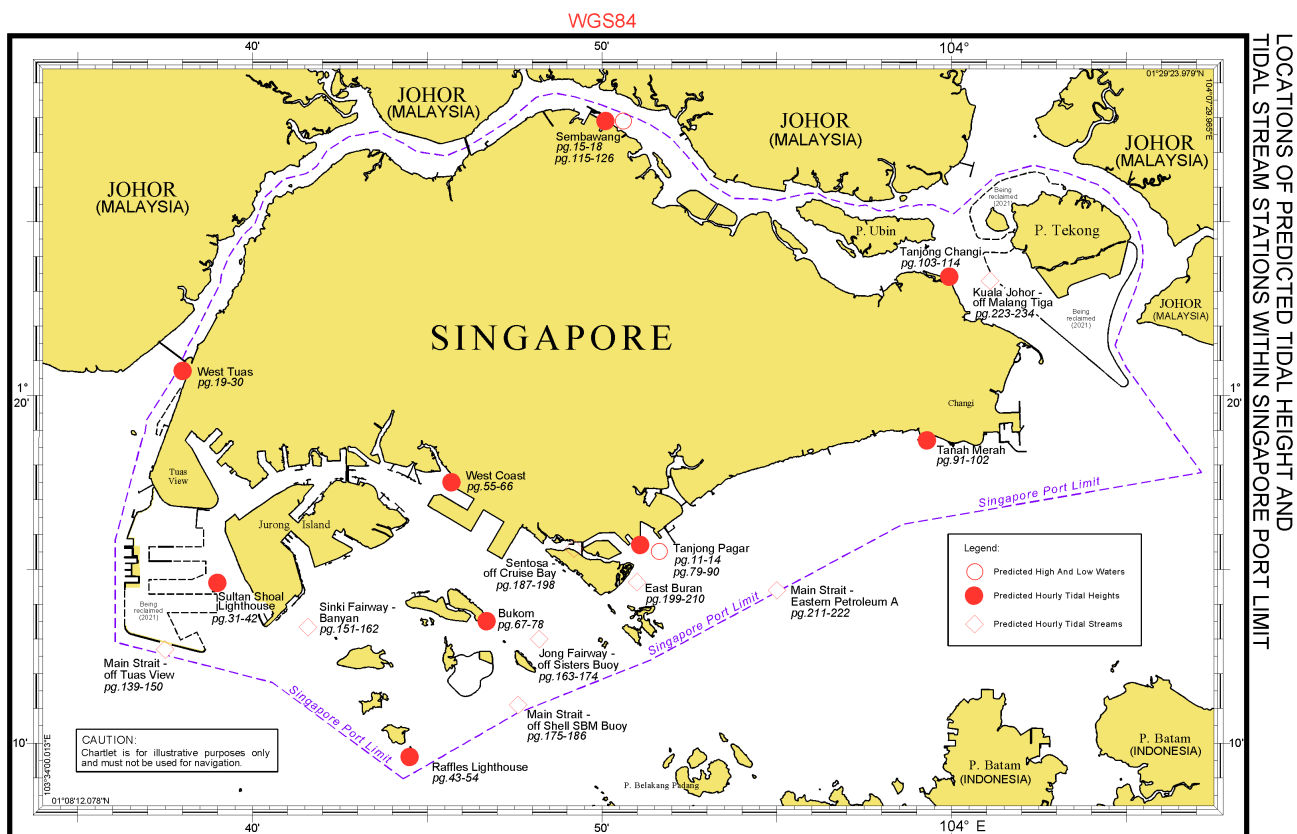
1. **High and Low Water Predictions** at the following stations:
 - a) Tanjong Pagar
 - b) Sembawang
2. **Hourly Tidal Height Predictions** at the following stations:
 - a) West Tuas
 - b) Sultan Shoal Lighthouse
 - c) Raffles Lighthouse
 - d) West Coast
 - e) Bukom
 - f) Tanjong Pagar
 - g) Tanah Merah
 - h) Tanjong Changi
 - i) Sembawang
 - j) Singapore Strait - Horsburgh Lighthouse
3. **Hourly Tidal Stream Predictions** at the following stations:
 - a) Main Strait - off Tuas View
 - b) Sinki Fairway - Banyan
 - c) Jong Fairway - off Sisters Buoy
 - d) Main Strait - off Shell SBM Buoy
 - e) Sentosa - off Cruise Bay
 - f) East Buran
 - g) Main Strait - Eastern Petroleum A
 - h) Kuala Johor - off Malang Tiga
4. **Maximum and Slack Tidal Stream Predictions** at the following stations:
 - a) Malacca Strait - off Pulau Iyu Kecil Light
 - b) Singapore Strait - Selat Phillip
 - c) Singapore Strait - Karang Banteng (Buffalo Rock)
 - d) Singapore Strait - Horsburgh Lighthouse
5. **Malacca Strait - High and Low Water Predictions** at the following stations:
 - a) Kedah Pier, Pulau Pinang
 - b) Port Dickson
 - c) Kuala Batu Pahat

The locations of the above stations are shown in the chartlets below:

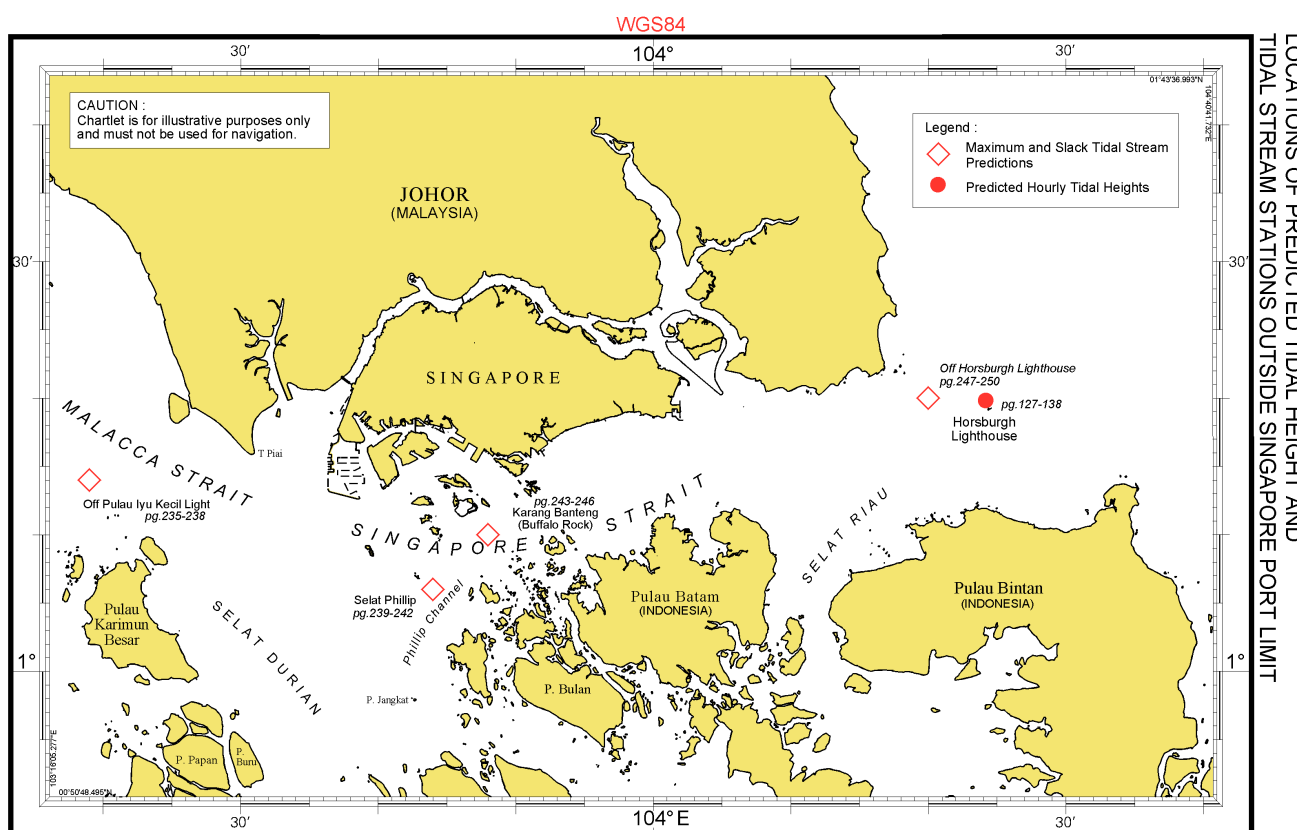
II

NEW CHARTS AND PUBLICATIONS

Tidal Prediction Stations within Singapore Port Waters



Tidal Prediction Stations within Straits of Malacca and Singapore



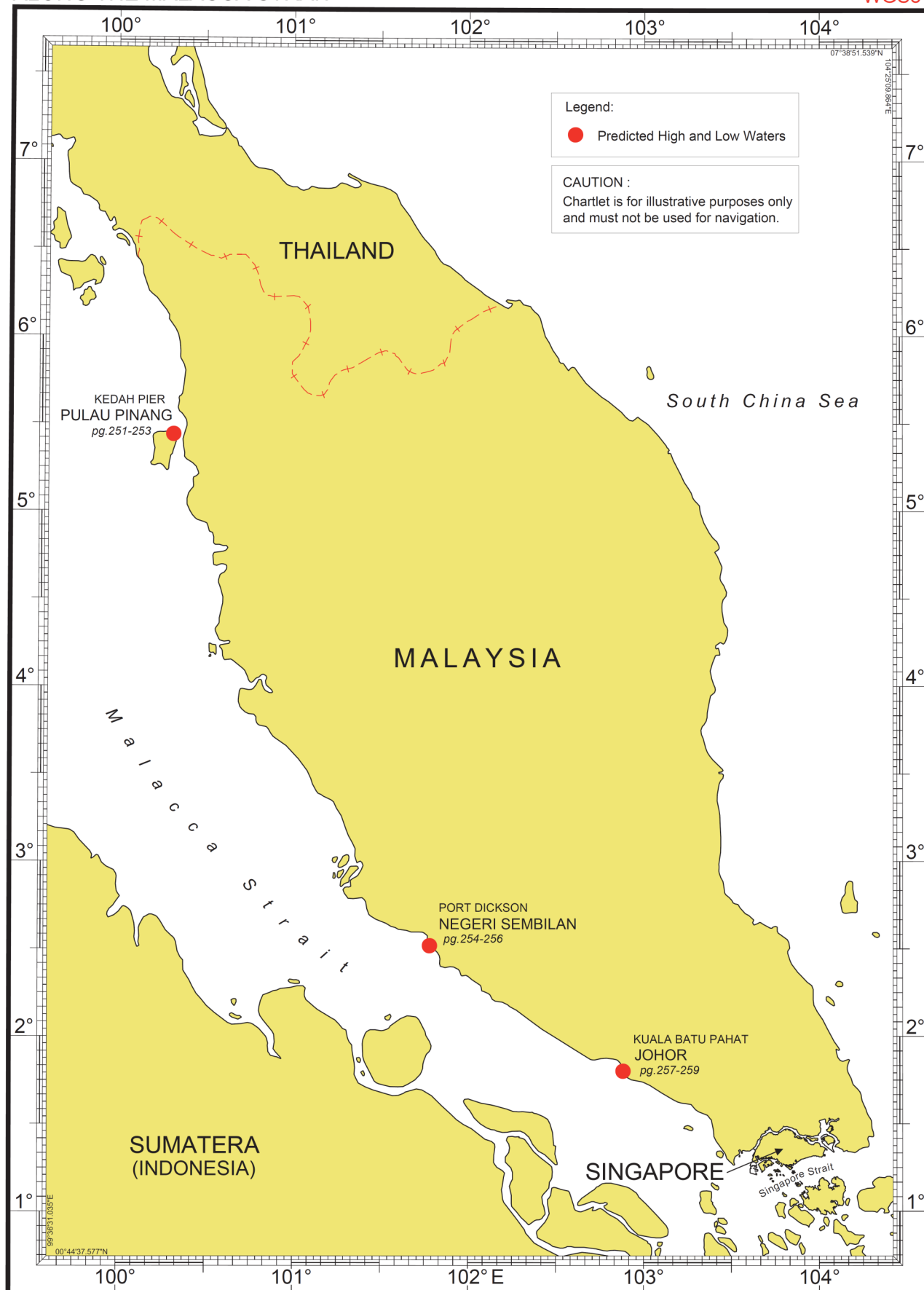
II

NEW CHARTS AND PUBLICATIONS

Tidal Prediction Stations In Malacca Strait

LOCATIONS OF PREDICTED TIDAL HEIGHT STATIONS
ALONG THE MALACCA STRAIT

WGS84



II

NEW CHARTS AND PUBLICATIONS

NEW EDITION SINGAPOREAN CHARTS TO BE PUBLISHED ON 15th OCTOBER 2021

Chart Number	: 502
Title	: Singapore Strait - Eastern Part
Coverage	: Lat 01° 07·00' N 01° 24·61' N Long 103° 51·43' E 104° 17·31' E
Scale	: 1 : 50 000
Date to be Published	: 15 th October 2021
Size of Chart	: 960.0 x 649.2 mm
Description	: This new edition includes updated surveys, changes to topography, aids to navigation and submarine cables. The existing chart of the same number published on 12 th September 2019 will be superseded.

NEW EDITION DUAL BADGED CHARTS TO BE PUBLISHED ON 28TH OCTOBER 2021

Chart Number	: 4038
Title	: Malaysia and Singapore Johor Strait - Western Part
Coverage	: Lat 01° 10·80' N 01° 28·70' N Long 103° 28·60' E 103° 40·70' E
Scale	: 1 : 30 000
Date to be Published	: 28 th October 2021
Size of Chart	: 750.6 x 1100.2 mm
Description	: This new edition includes updated surveys, changes to topography, aids to navigation, and submarine cables. The existing chart of the same number published on 15 th August 2019 will be superseded.

II

NEW CHARTS AND PUBLICATIONS

NEW EDITION SINGAPORE ELECTRONIC NAVIGATIONAL CHARTS (ENC) RELEASED ON 20th AUGUST 2021

1. New edition Singapore ENCs covering Singapore waters and its approaches were released on 20th August 2021. The existing cells of the same name have been superseded.
2. The 16 new edition ENC cells and their respective coverage are as follows:

Cell Name	Coverage
SG5C4030	West Jurong Anchorages and Temasek Fairway
SG5C4031	Western Approaches to Jurong Island
SG5C4032	Sinki Fairway
SG5C4033	Tuas Bay, West Jurong Channel and Pesek Basin
SG5C4034	East Jurong Channel, Pasir Panjang Terminal and West Keppel Fairway
SG5C4035	Western Anchorages, Jong Fairway and Cruise Bay
SG5C4036	Raffles Lighthouse to The Sisters
SG5C4037	Keppel Harbour, Tanjong Pagar Terminal and Approaches
SG5C4038	Johor Strait - Western Part
SG5C4039	Western Approaches to Main Strait
SG5C4041	Pulau Sebarok to Changi
SG5C4043	Kuala Johor and Sungai Johor
SG5C4044	Johor Strait - Eastern Part
SG5C4044A	Serangoon Harbour
SG5C4044B	Pelabuhan Johor (Johor Port)
SG5C4044C	Sembawang

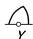
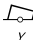





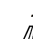





3. The new edition Singapore ENCs can be purchased from any of our Singapore ENC distributors.

Information on our Singapore ENC distributors can be found at the following link:

<https://www.mpa.gov.sg/web/portal/home/port-of-singapore/services/charts-tidal-info-atons-and-hydrography/singapore-electronic-navigational-chart>

II

NOTICES TO MARINERS AND CHART CORRECTIONS

GSP1/SP1	5 Ed 15/01/2021	Last NM 74/2021	(Maritime and Port Authority of Singapore)	*NM 79/2021
Delete	 <i>Fl. Y. 6s</i>	CC3	1°14·97'N	103°41·18'E
Insert	 <i>Fl. Y. 8s</i>	CC3	1°14·97'N	103°42·18'E
		(Maritime and Port Authority of Singapore)		*NM 80/2021
Delete	 <i>Fl. Y. 4s</i>	HY-W2	1°18·59'N	104°00·38'E
	 <i>Fl. Y. 4s</i>	HY-W3	1°18·36'N	104°00·79'E
	 <i>Fl. Y. 4s</i>	HY-W4	1°18·44'N	104°00·99'E
		(Maritime and Port Authority of Singapore)		*NM 81/2021
Insert	 <i>Fl. Y. 5s</i>		1°16·63'N	103°39·46'E
	 <i>Fl(4) Y. 10s</i>		1°16·56'N	103°52·43'E
<hr/>				
201	6 Ed 15/09/2017	Last NM 57/2021	(Indonesia Notices to Mariner No. 34/446/2021)	NM 82/2021
Delete	 <i>Al. Oc. BuY. 3s</i>		1°09·96'N	103°25·46'E
<hr/>				
202	8 Ed 15/09/2016	Last NM 44/2021	(Indonesia Notices to Mariner No. 34/446/2021)	NM 82/2021
Delete	 <i>Al. Oc. BuY. 3s</i>		1°09·95'N	103°25·45'E
<hr/>				
500	8 Ed 15/09/2017	Last NM 32/2021	(Indonesia Notices to Mariner No. 34/446/2021)	NM 82/2021
Delete	 <i>Al. Oc. BuY. 3s</i>		1°09·86'N	103°25·50'E
<hr/>				
502	8 Ed 12/09/2019	Last NM 60/2021	(Maritime and Port Authority of Singapore)	*NM 80/2021
Delete	 <i>Fl. Y. 4s</i>	HY-W2	1°18·59'N	104°00·38'E
	 <i>Fl. Y. 4s</i>	HY-W3	1°18·36'N	104°00·79'E
	 <i>Fl. Y. 4s</i>	HY-W4	1°18·44'N	104°00·99'E

II

TEMPORARY AND PRELIMINARY NOTICES

*(NM 83T/2021) : SINGAPORE - JOHOR STRAIT - LIGHTS

Description: 1. Sector lights in the following positions have been reported unlit:

Name of Beacon/ Buoy	Position Lat. N Long. E	Structure, Colour & Shape	Light Characteristic
North Light (Second Link) Beacon	01°21'029' 103°38'023'	Sector light at Second Link Bridge	DirFl.WRG.2,5s2M G 201°00'-202°30' (1.5°) W 202°30'-210°30' (8°) R 210°30'-212°00' (1.5°)
South Light (Second Link) Beacon	01°21'016' 103°38'013'	Sector light at Second Link Bridge	DirFl.WRG.2,5s3M G 17°30' -19°00' (1.5°) W 19°00' - 29°00' (10°) R 29°00' - 30°30' (1.5°)

2. Mariners are advised to navigate with caution in the area.

Charts affected : Singaporean GSP1/SP1 and Dual-badged BA4038.
ENC affected : SG5C4038

Source: Maritime and Port Authority of Singapore

*(NM 84P/2021) : SINGAPORE - WEST JURONG CHANNEL - BUOYS

Description: 1. Four special purpose buoys have been installed at the following positions:

Name of Beacon/ Buoy	Position Lat. N Long. E	Structure, Colour & Shape	Light Characteristic
JIDP-1 Buoy	01°16'615' 103°39'871'	Yellow pillar with 'X' topmark	Fl.Y.4s (sync)
JIDP-2 Buoy	01°16'637' 103°39'856'	Yellow pillar with 'X' topmark	Fl.Y.4s (sync)
JIDP-3 Buoy	01°16'656' 103°39'883'	Yellow pillar with 'X' topmark	Fl.Y.4s (sync)
JIDP-4 Buoy	01°16'633' 103°39'898'	Yellow pillar with 'X' topmark	Fl.Y.4s (sync)

2. Mariners are advised to keep a vigilant lookout and navigate with caution.

Charts affected : Singaporean GSP1/SP1, Dual-badged BA4030 and BA4033
ENC affected : SG5C4033

Note: Former notice 76P/2021 is cancelled.

Source: Maritime and Port Authority of Singapore

II

TEMPORARY AND PRELIMINARY NOTICES

***(NM 85T/2021) : SINGAPORE - BANYAN BASIN - BUOY**

Description: 1. A special purpose buoy has been installed at following position to facilitate upgrading works at Vopak Terminal.

Name of Beacon/ Buoy	Position Lat. N Long. E	Structure, Colour & Shape	Light Characteristic
VOPAK MD 4 Buoy	01°15·858' 103°41·186'	Yellow pillar with 'X' topmark	Fl(4)Y.10s

2. Mariners are advised to navigate with caution in the area.

Charts affected : Singaporean GSP1/SP1, Dual-badged BA4031 and BA4032.
ENC affected : SG5C4032

Source: Maritime and Port Authority of Singapore

(NM 86T/2021) : MALAYSIA - JOHOR STRAIT - BEACON

Description: 1. Neville Rock beacon at position 1°26·66'N 104°02·64'E had been destroyed.
 2. A port hand buoy have been installed to mark the ruined beacon at position 1°26·67'N 104°02·75'E, with light characteristic *Fl(2)R.5s*.
 3. Mariners are advised to navigate with caution in the area.

Charts affected : Singaporean GSP1/SP1 and Dual-badged BA4043.
ENC affected : SG5C4043

Source: Royal Malaysian Navy Notice No. 07/136(T)/2021

II

TEMPORARY AND PRELIMINARY NOTICES

*(NM 87P/2021) : SINGAPORE - CHANGI EAST - PROHIBITED AREA

Description:

1. The area into which entry is prohibited off Changi East, Changi Naval Base, has been amended, joining the following positions:

(WGS84 Datum)	
Latitude (N)	Longitude (E)
1°19·476'N	104°01·953'E
1°19·487'N	104°02·375'E
1°18·139'N	104°02·410'E
1°18·102'N	104°00·992'E
1°18·097'N	104°00·806'E
1°18·600'N	104°00·806'E

2. These changes will be included in the next edition of Singaporean Charts GSP1/SP1, 202, 502 and Dual-badged Charts BA4041 and BA4043.

Charts affected : Singaporean GSP1/SP1, 202, 502, Dual-badged BA4041 and BA4043
ENC affected : SG5C4043

Source: Infrastructure Protection (Protected Areas) (No. 4) Order 2021 (G.N. No. S 517/2021)

II TEMPORARY AND PRELIMINARY NOTICES

Cancelled Temporary and Preliminary Notices

<i>No. of Notices</i>	<i>Subject</i>	<i>Charts Affected</i>
76P/2021	Installation of buoys off Jurong Island	Singaporean GSP1/SP1, Dual-badged BA4030, BA4033

III NAVIGATIONAL INFORMATION

*(NM 88/2021)

SINGAPORE PORT MARINE NOTICES / CIRCULARS

The Port Marine Notices/Circulars shortlisted below would be of particular interest to Mariners. Details and complete list of Port Marine Notices/Circulars are available at this link:

<http://www.mpa.gov.sg/web/portal/home/port-of-singapore/circulars-and-notice>

PMC No.**Subject**

035/2021

Staying safe when participating in recreational water activities at sea

036/2021

Revision to the number of persons onboard pleasure craft in the Port of Singapore

PMN No.**Subject**

057/2021

Construction of Temporary RORO ramp at Tuas South

058/2021

Works at Tuas Terminal Phase 2

059/2021

Restriction on vessels transiting, anchoring, or remaining in the demarcated area at the Eastern anchorage off Marina Barrage

060/2021

Marine soil investigation off Jurong Shipyard

061/2021

Construction and upgrading of existing barge jetty at Pulau Sebarok

062/2021

Upgrading works at Jurong Port Tank Terminals

*Source: Maritime and Port Authority of Singapore

III AMENDMENTS TO PUBLICATIONS

*(NM 89/2021) UPDATING OF PUBLICATION “SINGAPORE PORT INFORMATION 2020/2021”

CHARACTERISTICS OF AIDS TO NAVIGATION

1. Page 133

TUAS VIEW EXTENSION

Insert the following:

Name of Beacon/ Buoy	Position Lat. N Long. E Deg Min	Structure, Colour & Shape	Light Characteristic	Owner
PUB- PSTWC Buoy	01°18.454' 103°37.170'	Yellow pillar with 'X' topmark	Fl(4)Y.10s	Winsys Technology Pte Ltd

2. Page 135

WEST JURONG CHANNEL

Amend the following:

Name of Beacon/ Buoy	Position Lat. N Long. E Deg Min	Structure, Colour & Shape	Light Characteristic	Owner
JIDP-2 Buoy	[#] 01°16.637' 103°39.856'	Yellow pillar with 'X' topmark	Fl.Y.4s (sync)	PUB

Insert the following:

Name of Beacon/ Buoy	Position Lat. N Long. E Deg Min	Structure, Colour & Shape	Light Characteristic	Owner
PUB-PSJI Buoy	01°16.632' 103°39.460'	Yellow pillar with 'X' topmark	Fl.Y.5s	Winsys Technology Pte Ltd

3. Page 147

APPROACHES TO MARINA RESERVOIR

Insert the following:

Name of Beacon/ Buoy	Position Lat. N Long. E Deg Min	Structure, Colour & Shape	Light Characteristic	Owner
PUB-PSME Buoy	01°16.564' 103°52.428'	Yellow pillar with 'X' topmark	Fl(4)Y.10s	Winsys Technology Pte Ltd

III AMENDMENTS TO PUBLICATIONS

*(NM 89/2021) UPDATING OF PUBLICATION “SINGAPORE PORT INFORMATION 2020/2021”

4. Page 151

CHANGI EAST

Delete the following:

Name of Beacon/ Buoy	Position Lat. N Long. E Deg Min	Structure, Colour & Shape	Light Characteristic	Owner
HY-W2 Buoy	01°18·591' 104°00·382'	Yellow pillar with 'X' topmark	Fl.Y.4s (sync)	HDEC
HY-W3 Buoy	01°18·356' 104°00·789'	Yellow pillar with 'X' topmark	Fl.Y.4s (sync)	HDEC
HY-W4 Buoy	01°18·437' 104°00·985'	Yellow pillar with 'X' topmark	Fl.Y.4s (sync)	HDEC

*Source: Maritime and Port Authority of Singapore

IV

REPRINT OF MARITIME SAFETY INFORMATION

The following Maritime Safety Information have been shortlisted, as they would be of particular interest to mariners.

TT175

VESSELS IN EAST JOHOR STRAIT ARE ADVISED TO NAVIGATE WITH PARTICULAR ALERTNESS AND CAUTION WHEN NEAR THE PROJECT AREAS OFF PULAU TEKONG, CHANGI AND MALANG PAPAN AS SHALLOW WATER AREAS EXIST. VESSELS ARE REMINDED TO PROCEED AT A SAFE SPEED AND MAINTAIN A PROPER LOOK-OUT, PARTICULARLY FOR TUGS AND BARGES NAVIGATING NEAR THE PROJECT AREAS AND PASSENGER FERRIES CROSSING BETWEEN CHANGI AND PULAU TEKONG AND VICINITY OF PASIR GUDANG.

TT273

ALL VESSELS ARE ADVISED TO NAVIGATE WITH CAUTION, COMPLY WITH THE COLREGS, MAINTAIN VHF RADIO WATCH AND LISTEN TO TRAFFIC INFORMATION WHEN NAVIGATING IN THE SINGAPORE STRAIT AND PORT WATERS. MARINERS ARE ALSO ADVISED TO KEEP A GOOD LOOKOUT OF FREQUENT FERRIES CROSSING THE SINGAPORE STRAIT.

TT363 (AMENDED ON 140821UTC APRIL 2019).

MARINERS ARE REMINDED NOT TO ANCHOR IN ALL AREAS IN THE TSS, INCLUDING PRECAUTIONARY AREAS OF THE STRAITS OF MALACCA AND SINGAPORE AS WELL AS BETWEEN THE LANDWARD LIMITS OF THE TSS AND APPROACHES TO THE PORTS. VESSELS ENTERING ANY PORT IN ANY LITTORAL STATES ARE TO ANCHOR IN THE ANCHORAGES DESIGNATED BY THE RESPECTIVE LITTORAL STATES. MARINERS ARE ALSO REMINDED THAT EVERY CARE SHOULD BE TAKEN TO AVOID ANCHORING IN THE VICINITY OF SUBMARINE CABLES OR PIPELINES.

TT399

VESSELS ARRIVING TO SINGAPORE OR TRANSITING THROUGH THE STRAIT ARE RECOMMENDED TO UPDATE THEIR DESTINATION ACCURATELY IN THE AIS TO ENHANCE SITUATIONAL AWARENESS FOR OTHER TRAFFIC IN THE VICINITY. EG: SG-PEBGB FOR PILOT EASTERN BOARDING GROUND BRAVO.

TT418

WEST BOUND DEEP DRAFT VESSELS AND VLCCS ARE REMINDED TO COMPLY WITH THE RULES OF VESSELS NAVIGATING THROUGH THE STRAITS OF MALACCA AND SINGAPORE (SOMS). THEY SHALL ALLOW FOR AN UKC OF AT LEAST 3.5 METRES AT ALL TIMES DURING THE ENTIRE PASSAGE THROUGH THE SOMS AND AS FAR AS IT IS SAFE AND PRACTICABLE, PROCEED AT A SPEED OF NOT MORE THAN 12 KTS OVER THE GROUND IN THE WESTBOUND LANE OF THE SINGAPORE STRAIT (BETWEEN SOUTH OF ST JOHN'S ISLAND & RAFFLES LIGHTHOUSE). THEY ARE ADVISED TO BROADCAST, 8 HOURS BEFORE ENTERING THE TSS, NAVIGATIONAL INFORMATION GIVING NAME, DEADWEIGHT, DRAUGHT, SPEED AND TIMES OF PASSING HORSBURGH LIGHTHOUSE AND RAFFLES LIGHTHOUSE.

TT426

ALL MARINERS ARE REMINDED TO NAVIGATE WITH CAUTION IN THE PRECAUTIONARY AREAS AND TSS, MAINTAIN A GOOD LOOKOUT FOR CROSSING TRAFFIC. VESSELS INTENDING TO CROSS THE TSS SHALL DO SO ONLY WHEN IT IS SAFE AND SHALL AT ALL TIMES COMPLY WITH THE COLREGS.

TT642

ALL MARINERS NAVIGATING THROUGH THE STRAIT OF SINGAPORE ARE REMINDED TO MAINTAIN CLOSE AND CONTINUOUS MONITORING OF VESSELS POSITION. IN DETERMINING RISK OF GROUNDING, DIFFERENT METHODS OF POSITION FIXING SHOULD ALSO BE USED AS MEANS OF CROSS-CHECKING.

TT643

THERE IS REPORT OF CONCENTRATION OF FISHING VESSELS OBSERVED IN THE EASTBOUND TRAFFIC LANE IN THE VICINITY BETWEEN BUFFALO ROCK AND BATU BERHANTI. ALL VESSELS ARE ADVISED TO PROCEED AT A SAFE SPEED, KEEP A SHARP LOOK OUT AND NAVIGATE WITH EXTREME CAUTION AT ALL TIME.

IV

REPRINT OF MARITIME SAFETY INFORMATION

TT761

CABLE VESSEL ASEAN PROTECTOR AND ASSISTED BY GUARD BOATS ARE CARRYING CABLE RETRIEVAL WORKS IN THE SINGAPORE STRAIT OF VTIS SECTOR 7 FROM SOUTH OF TUAS VIEW EXTENSION WEST BOUND LANE, THROUGH TSS PRECAUTIONARY AREA AND TO SOUTH OF EAST BOUND LANE, FROM 11 AUG 2021 TO 18 SEP 2021. VESSELS ARE ADVISED TO NAVIGATE WITH CAUTION, PROCEED AT SAFE SPEED AND KEEP WELL CLEAR OF THE CABLE VESSEL.

TT762

SAFE WATER MARKS/BUOY AT APPROXIMATE POSITION 01-02.99N, 103-39.03E IS REPORTED UNLIT ON 18 AUGUST 2021 2300UTC. ALL VESSELS ARE TO NAVIGATE WITH CAUTION.

TT763

THERE IS A REPORT OF AN UNAUTHORISED BOARDING ON 21 AUGUST 2021 AT 0300LT IN POSITION LAT 01-18.0N LONG 104-14.8E. MARINERS ARE ADVISED TO KEEP A GOOD LOOK OUT AND MAINTAIN ANTI-PIRACY WATCH.

TT764

THERE IS A REPORT OF AN UNAUTHORISED BOARDING ON 20 AUGUST 2021 AT 2220LT IN POSITION LAT 01-15.0N LONG 104-06.5E. MARINERS ARE ADVISED TO KEEP A GOOD LOOK OUT AND MAINTAIN ANTI-PIRACY WATCH.

TT961

VESSELS INTENDING TO CROSS THE TRAFFIC SEPARATION SCHEME (TSS) OR PRECAUTIONARY AREAS IN THE SINGAPORE STRAIT DURING THE HOURS OF DARKNESS ARE RECOMMENDED TO DISPLAY THE NIGHT SIGNALS CONSISTING OF 3 ALL ROUND GREEN LIGHTS IN A VERTICAL LINE AS DETAILED IN THE MARITIME AND PORT AUTHORITY OF SINGAPORE'S PORT MARINE CIRCULAR, 04 OF 2013 DATED 7 MAY 2013.

SR123 (AMENDED ON 100800UTC JUNE 2020)

SEA ROBBERIES ARE REPORTED IN THE SINGAPORE STRAIT. MARINERS ARE TO MAINTAIN A CONSTANT VISUAL AND RADAR WATCH FOR SMALL CRAFT AND REPORT ANY SUSPICIOUS ACTIVITIES IN THE SINGAPORE STRAIT TO VTIS SINGAPORE.

ISSUED BY SINGAPORE PORT OPERATIONS CONTROL CENTRE (as at 31st August 2021)

V
EXTRACT OF ADMIRALTY NOTICES TO MARINERS
FOR DUAL-BADGED CHARTS

These notices can also be accessed directly from UKHO Website:

<http://www.admiralty.co.uk/maritime-safety-information/admiralty-notices-to-mariners>

3064* SINGAPORE - Obstruction.

Source: Maritime and Port Authority of Singapore

Chart 4033 [*previous update 2832/21*] WGS84 DATUM

Insert	 <i>Obstn</i>	1°17.726'N 103°38.732'E
---------------	--	----------------------------

3081* SINGAPORE - Buoyage. Obstruction.

Source: Maritime and Port Authority of Singapore

Chart 4037 [*previous update 2635/21*] WGS84 DATUM

Insert	 <i>Obstn</i>	1°15.807'N 103°51.668'E
---------------	--	----------------------------

 <i>MS41</i>	1°16.379'N 103°52.348'E
---	----------------------------

Chart 4040 [*previous update 2814/21*] WGS84 DATUM

Insert	 <i>Obstn</i>	1°15.81'N 103°51.67'E
---------------	--	--------------------------

Chart 4041 [*previous update 2635/21*] WGS84 DATUM

Insert	 <i>Obstn</i>	1°15.81'N 103°51.67'E
---------------	--	--------------------------

 <i>VP1</i>	1°16.82'N 103°52.80'E
--	--------------------------

Updated to Admiralty Notices to Mariners no. 35 of 2021 dated 2nd September 2021

HYDROGRAPHIC NOTE - Instructions

1. Mariners are requested to notify the Chief Hydrographer, Maritime and Port Authority of Singapore, when new or suspected dangers to navigation are discovered, changes are observed in aids to navigation or where corrections to nautical publications may be necessary. Reports, which cannot be confirmed or are lacking in certain details should not be withheld.
2. Any ambiguities of time, positioning and depth should be stressed and any firm expectation of being able to check the information provided on a following voyage should be mentioned.
3. Mariners using satellite position fixing systems, eg. GPS, should provide details of equipment and datum used (where applicable). Where bearings (true or magnetic) are taken visually or by radar to fix a position, it should include more than two objects in order to provide a check on its accuracy. A position may also be defined by bearing and distance from a conspicuous object eg. beacon, lighthouse etc.
4. The note should include a tracing or a digital image of the chart used and the details should be clearly marked.
5. Echo sounders frequently register greater depths than the advertised maximum depth for the equipment, eg. a trace appearing at 50 metres may be in fact be 550 metres or even 1050 metres for equipment whose maximum depth is 500 metres. Erroneous depths caused by 2nd transmission error can usually be recognised by the following:
 - (a) the tracing being weaker than normal for the depth registered,
 - (b) the trace appearing to pass through the transmission line,
 - (c) the feathery nature of the trace.
6. Upon receipt of a hydrographic note, a Notice to Mariners may be issued. The sender's vessel or name is quoted as the source unless the same information is also received in foreign Notices to Mariners.
7. Reports of shoals, uncharted dangers and defects in aids to navigation may also be made to the appropriate Singapore Port Operations Control Centre on VHF Channels 10, 12, 14, 68 or 73.

HYDROGRAPHIC NOTE

To:

Chief Hydrographer
Maritime and Port Authority of Singapore
7B Keppel Road #20-00 Tanjong Pagar Complex
Singapore 089055

Tel : 1800 272 7777 / (65) 6272 7777
Fax : (65) 6226 1076
Email : hydrographic@mpa.gov.sg

Sender's Contact Details :

Date :

Name of Vessel :

Address of Sender :

Tel : Fax :

Email :

Nature of Observation :

General Location :

Subject :

Position : Lat. Long.

Charts Used :

Date & Time of Observation :

Details :

.....

.....

Attachment :

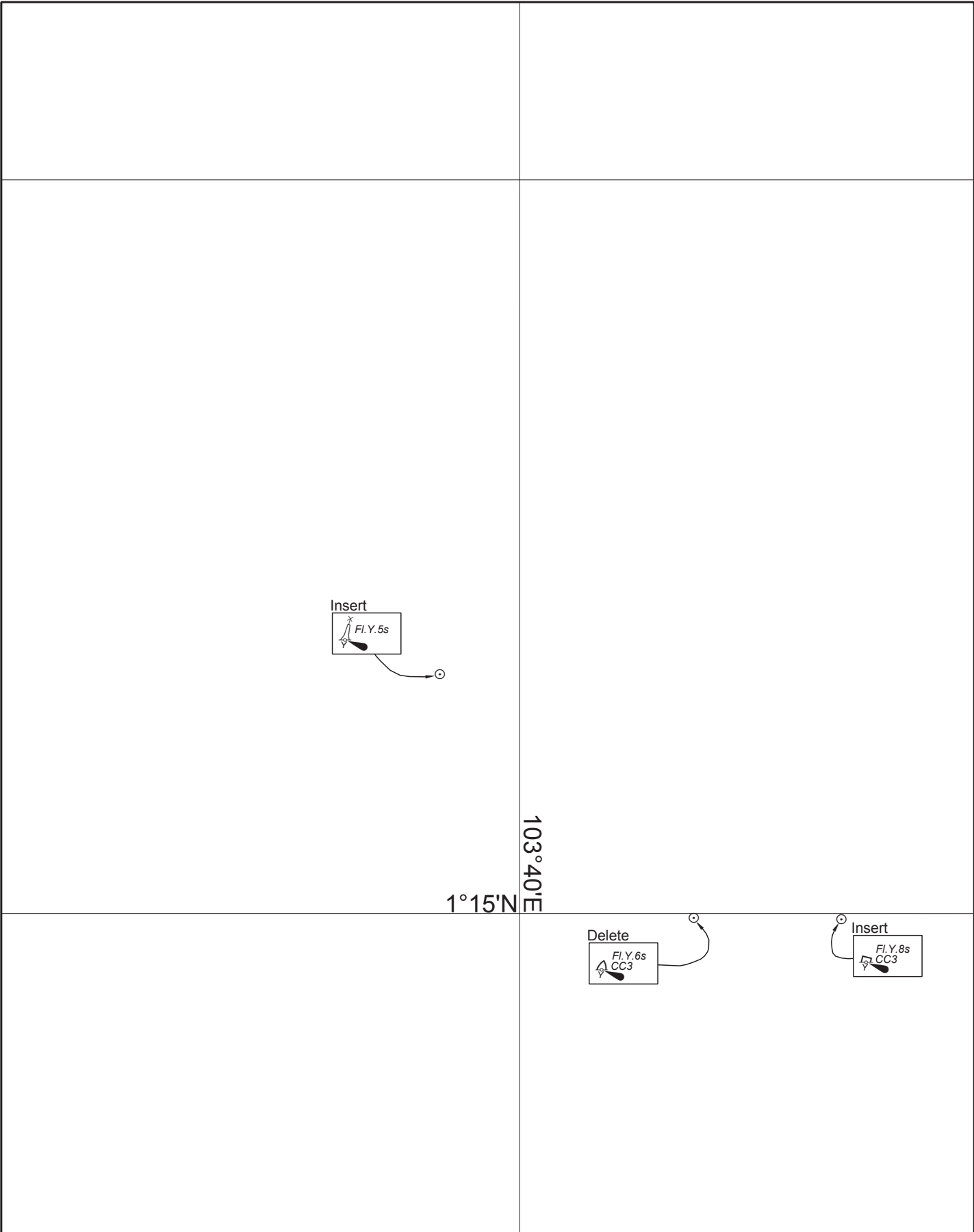
Equipment Used :

Type of Position Fixing : GPS / DGPS Others :

Type of Echo Sounder :

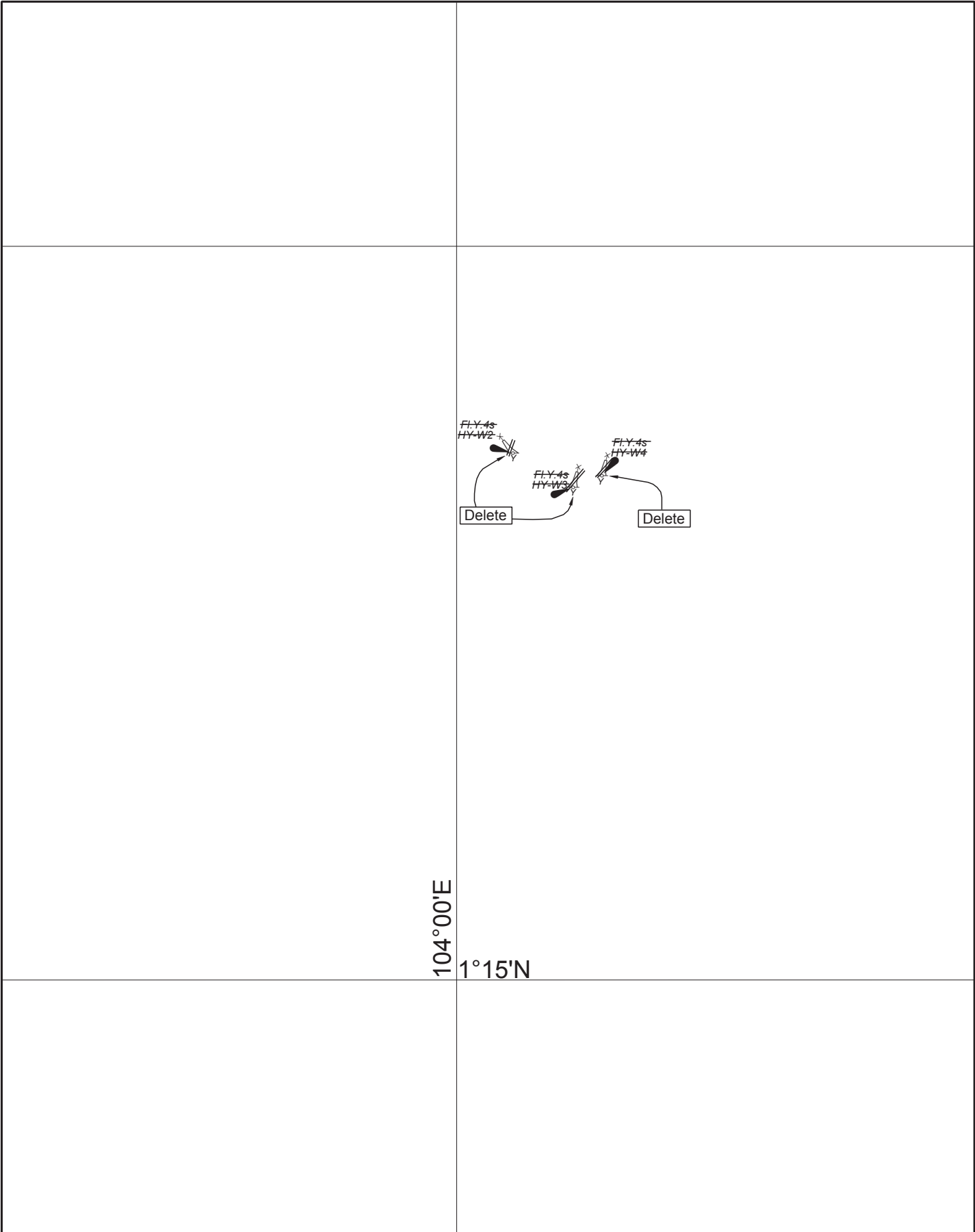
Name and Signature :

Ship's/Company's Stamp :



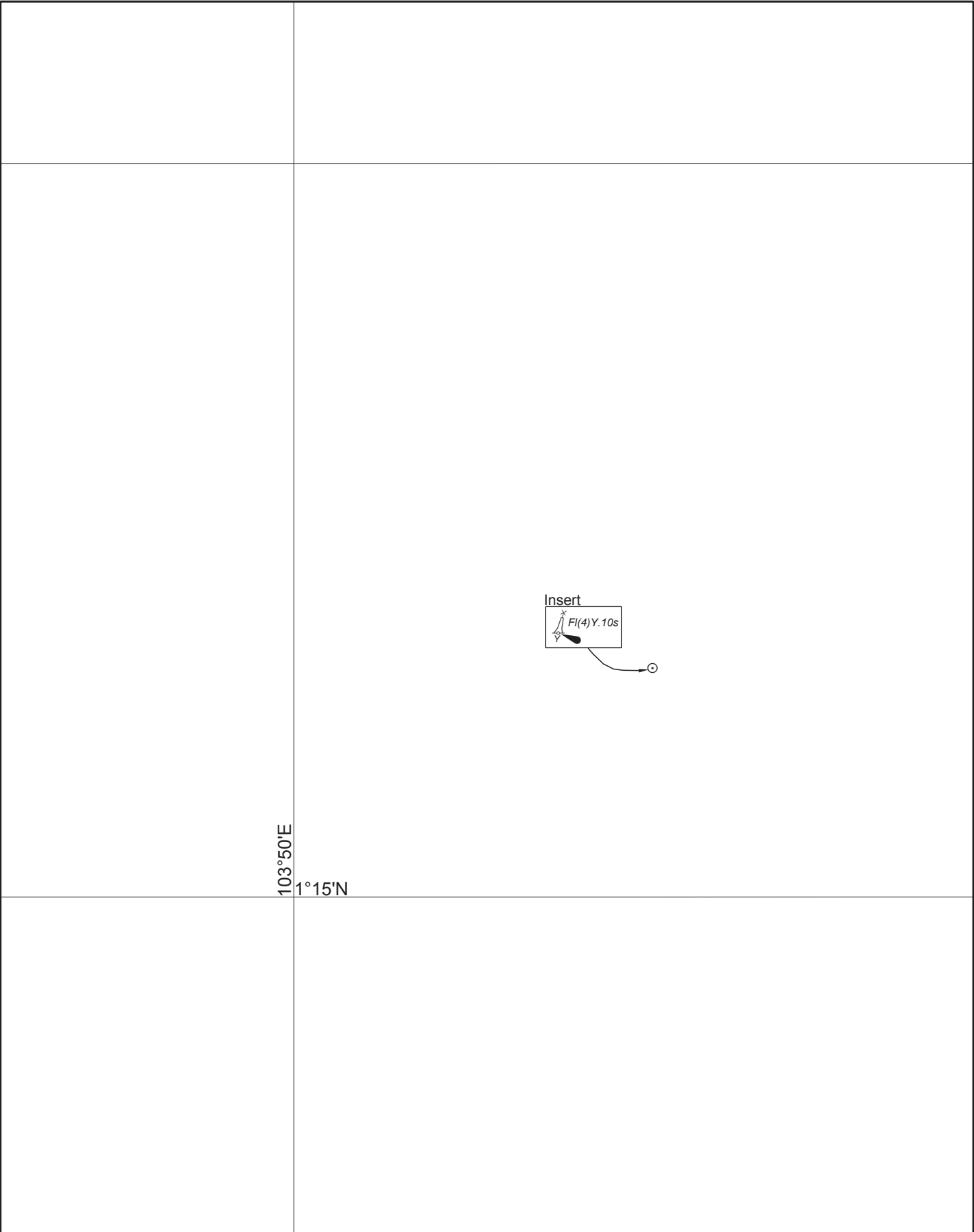
CORRECTION NO.	SNM EDN NO.	LAST CORR N NO.	CHART NO.	Location on Chart		
				X		
79,81 (Sheet 1)	09/2021	74	GSP1/SP1			

Caution : some computer printers might distort the tracings.
Users are advised to check and, if necessary, adjust settings on the printer



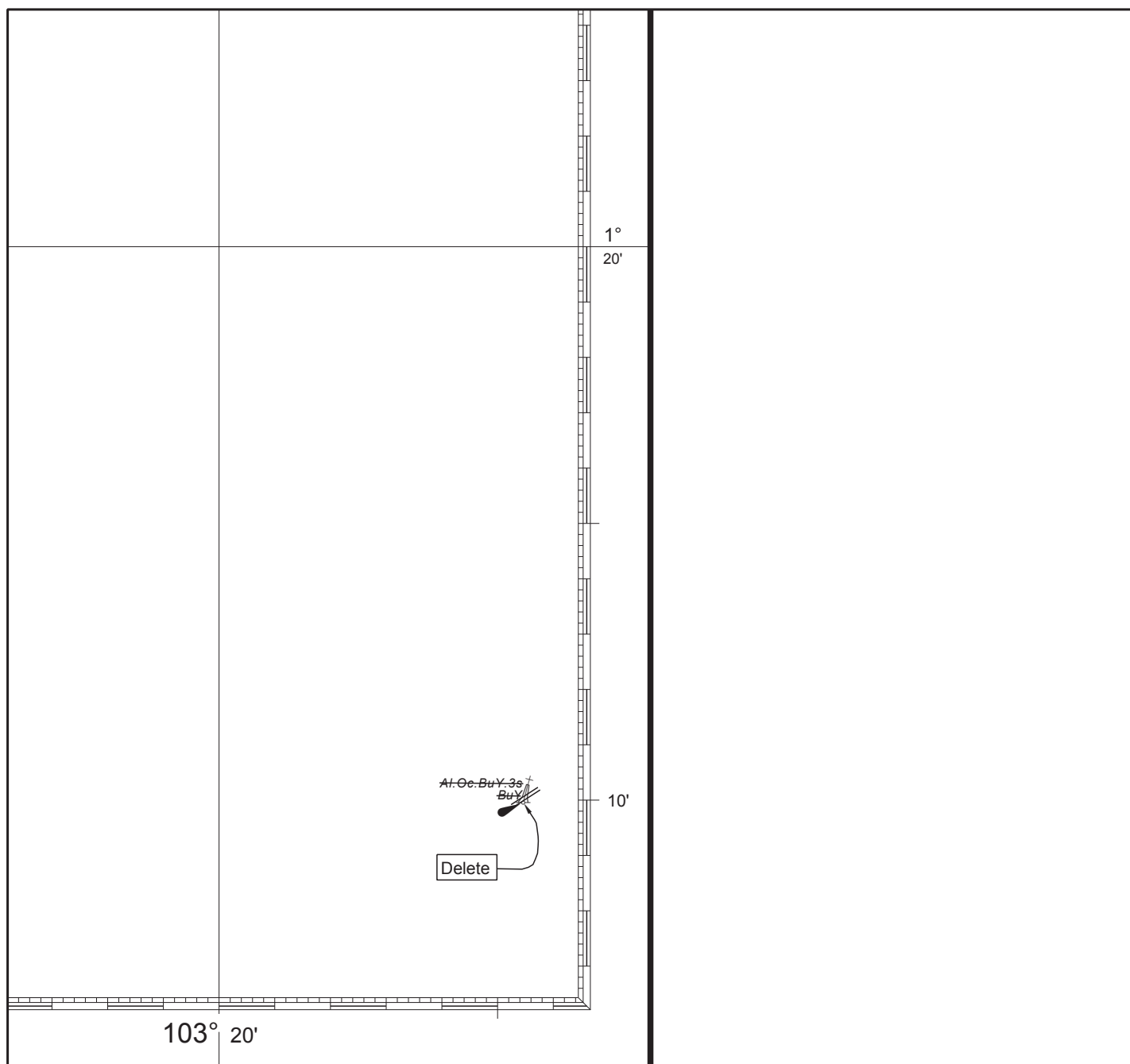
CORRECTION NO.	SNM EDN NO.	LAST CORR N NO.	CHART NO.	Location on Chart		
80	09/2021	79	GSP1/SP1			X

Caution : some computer printers might distort the tracings.
Users are advised to check and, if necessary, adjust settings on the printer



CORRECTION NO.	SNM EDN NO.	LAST CORR N NO.	CHART NO.	Location on Chart		
					X	
81 (Sheet 2)	09/2021	80	GSP1/SP1			

Caution : some computer printers might distort the tracings.
Users are advised to check and, if necessary, adjust settings on the printer



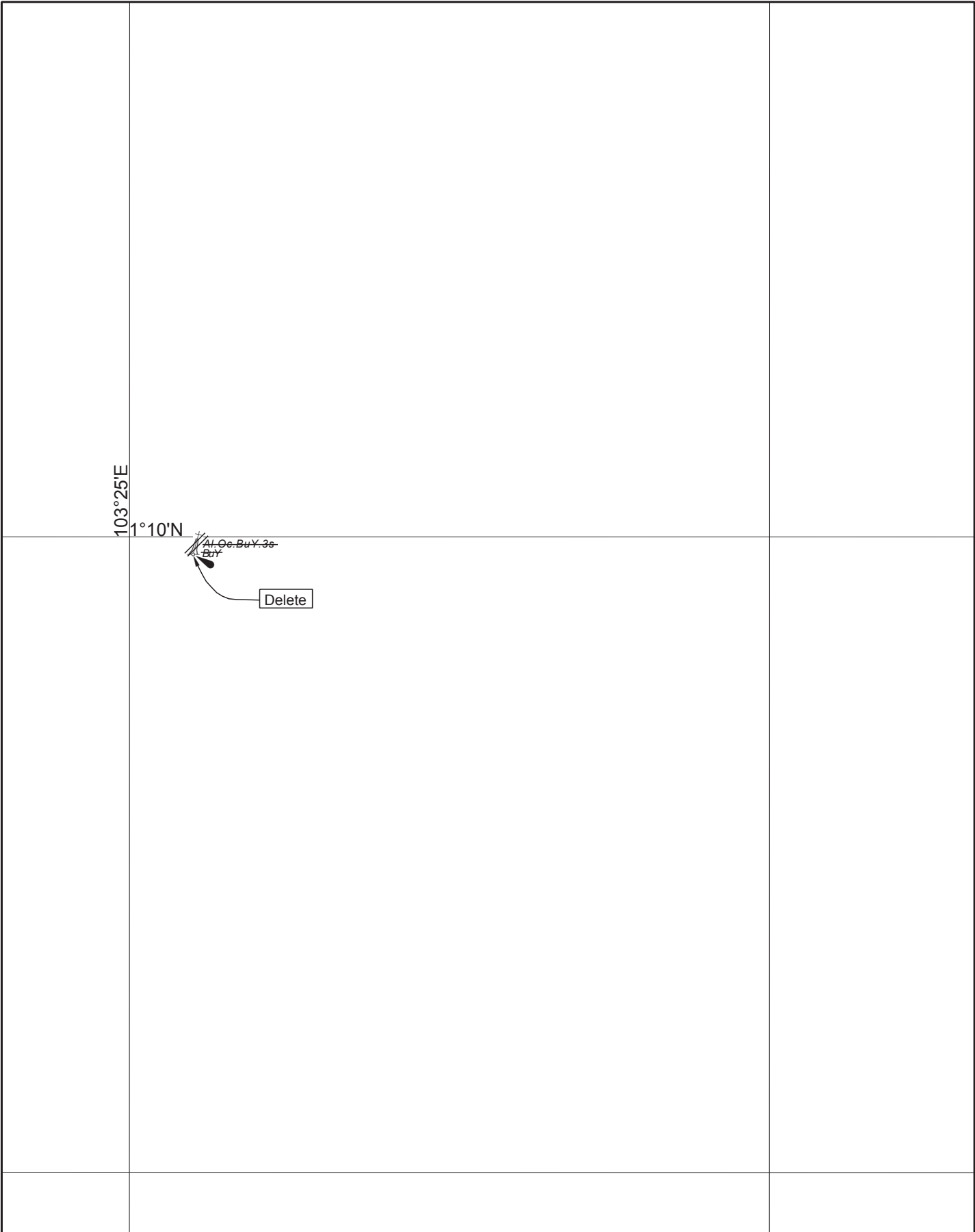
(960.0 x 650.0mm)

201

CORRECTION NO.	SNM EDN NO.	LAST CORR NO.	CHART NO.	Location on Chart		
82	09/2021	57	201			X

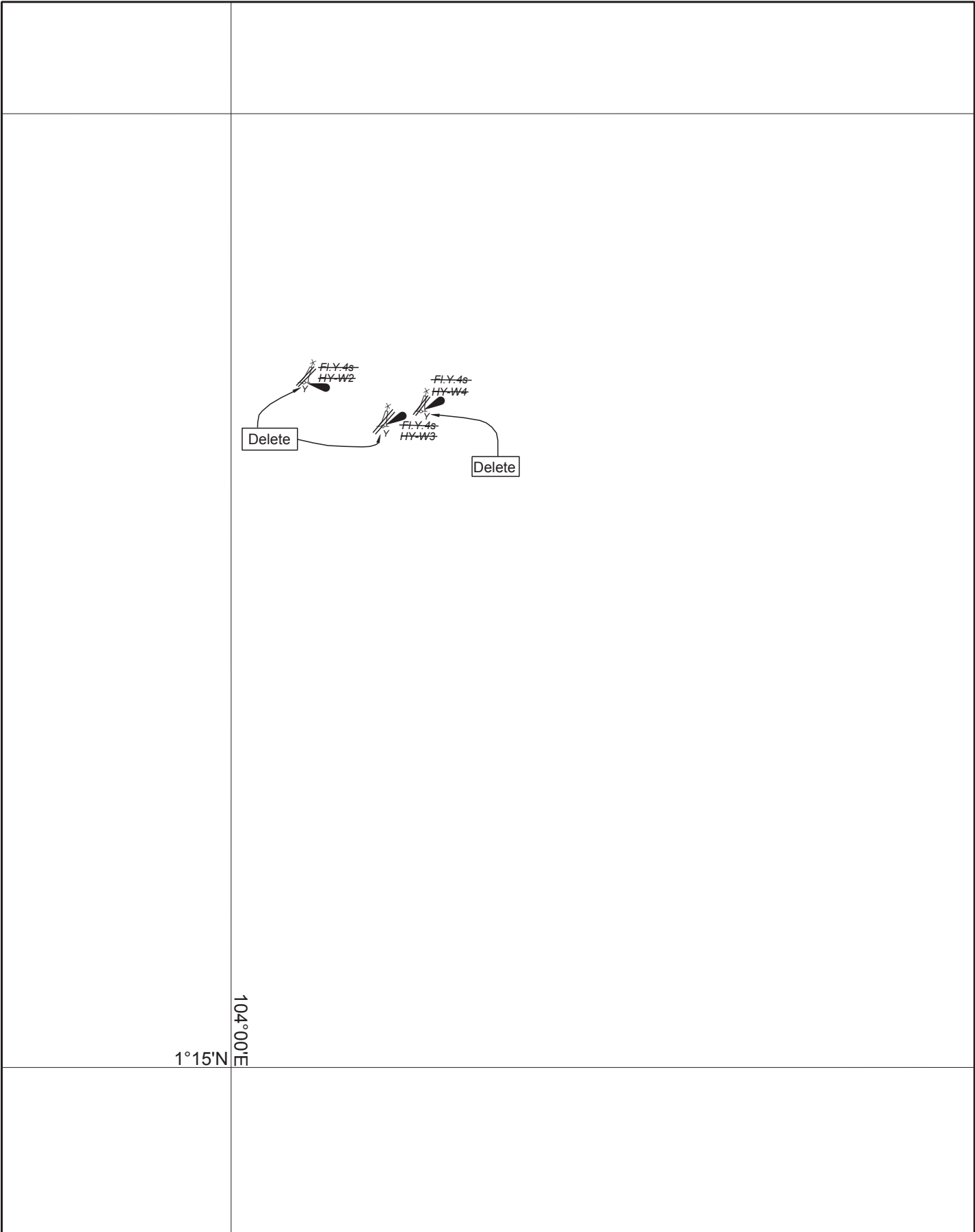
Caution : some computer printers might distort the tracings.
Users are advised to check and, if necessary, adjust settings on the printer

[illegible]



CORRECTION NO.	SNM EDN NO.	LAST CORRNO NO.	CHART NO.	Location on Chart		
					X	
82	09/2021	32	500			

Caution : some computer printers might distort the tracings.
Users are advised to check and, if necessary, adjust settings on the printer



CORRECTION NO.	SNM EDN NO.	LAST CORR N NO.	CHART NO.	Location on Chart		
				X		
80	09/2021	60	502			

Caution : some computer printers might distort the tracings.
Users are advised to check and, if necessary, adjust settings on the printer