



SINGAPOREAN NOTICES TO MARINERS

SECTION	CONTENT	Page
I	Affected Charts & Publications	1
II	New Charts and Publications	2
	Notices to Mariners and Chart Corrections	7
	Temporary and Preliminary Notices	8
	Cancelled Temporary and Preliminary Notices	9
III	Navigational Information	10
	Amendments to Publications	11
IV	Reprint of Maritime Safety Information	14
V	Extract of Admiralty Notices to Mariners for Dual-Badged Charts	16

The monthly Notices to Mariners contain information required to keep charts and publications published by the Hydrographic Division, Maritime and Port Authority of Singapore up-to-date.

Mariners are requested to notify the Chief Hydrographer, Maritime and Port Authority of Singapore, immediately of the discovery of new or suspected dangers to navigation, observed changes to aids to navigation and ways Singaporean Charts and Publications can be improved. The Hydrographic Note on the back page should be used for this purpose.

Detailed information of charts and publications (coverage of charts, latest editions and distributors) are available on the Maritime and Port Authority Website: www.mpa.gov.sg

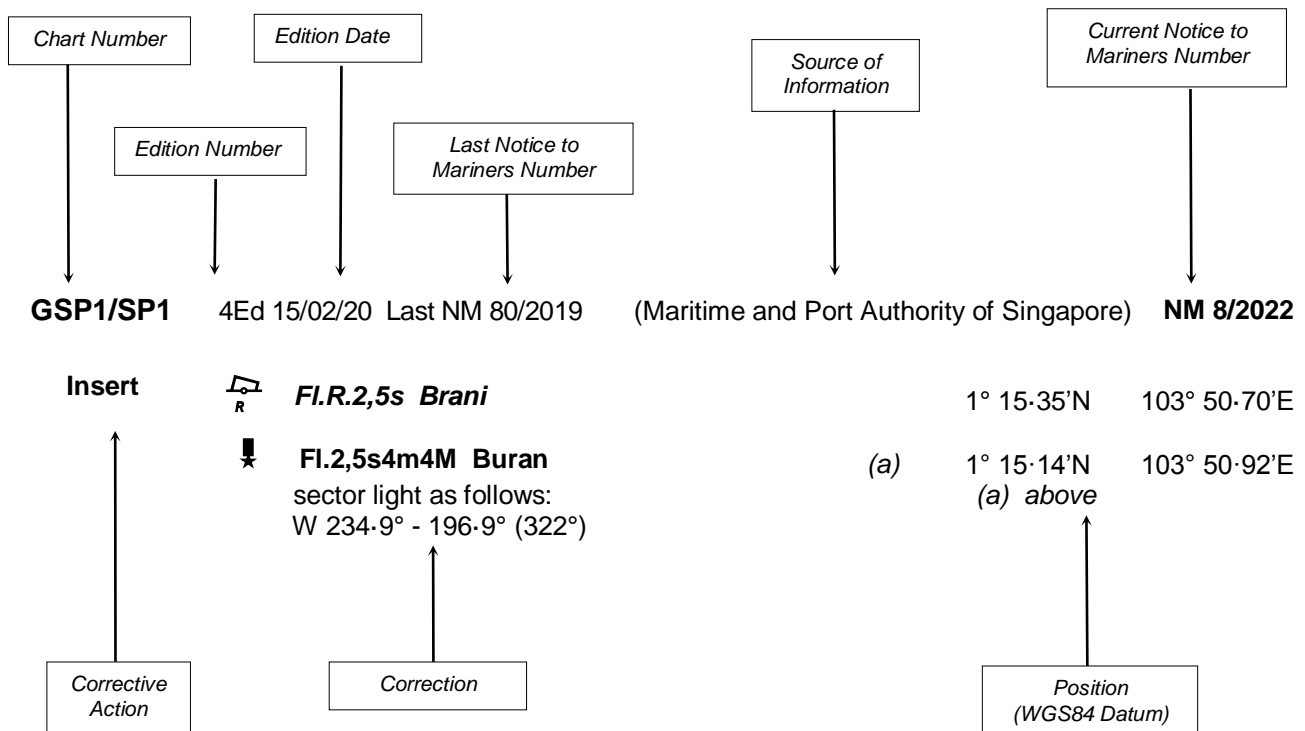
- [Singaporean Notice to Mariners](#)
- [Singaporean Charts](#)
- [Dual-Badged Charts](#)
- [Singapore ENC](#)
- [Malacca and Singapore Straits ENC](#)
- [Singapore Port Information](#)
- [Singapore Tide Tables](#)

Contact information:

Hydrographic Division
Maritime and Port Authority of Singapore
7B Keppel Road
#20-00 Tanjong Pagar Complex
Singapore 089055
Tel : 1800 272 7777 / (65) 6272 7777
Email : hydrographic@mpa.gov.sg

EXPLANATION OF FORMAT

The elements of a typical chart correction are explained below.



Notes:

- Notice to Mariners number followed by:
T indicates a Temporary Notice (eg. **NM 9T/2022**).
P indicates a Preliminary Notice (eg. **NM 10P/2022**).
- Bearings are true reckoned clockwise from 000° to 359°; those relating to lights are from seaward.
- Heights and elevations are above Mean High Water Springs.
- # indicates where amendments are made.
- * indicates source from Maritime and Port Authority of Singapore.

I
AFFECTED CHARTS AND PUBLICATIONS

INDEX OF NOTICES

NOTICE NO.	DESCRIPTION	PAGE NO.
-	New Charts and Publications	2 - 6
-	Temporary and Preliminary Notices	8 - 9
*40	Singapore Port Marine Notices/Circulars	10
*41	Amendments to Publications	11 - 13
-	Reprint of Maritime Safety Information	14 - 15
-	Extract of Admiralty Notices to Mariners for Dual-Badged Charts	16

*Source: Maritime and Port Authority of Singapore

II NEW CHARTS AND PUBLICATIONS

SINGAPORE TIDE TABLES YEAR 2023 TO BE PUBLISHED ON 26TH SEPTEMBER 2022

Summary of Publication

This publication contains Tidal Height and Tidal Stream Predictions covering stations in Singapore Port Waters and along the Straits of Malacca and Singapore.



1. **High and Low Water Predictions** at the following stations:
 - a) Tanjong Pagar
 - b) Sembawang
2. **Hourly Tidal Height Predictions** at the following stations:
 - a) West Tuas
 - b) Sultan Shoal Lighthouse
 - c) Raffles Lighthouse
 - d) West Coast
 - e) Bukom
 - f) Tanjong Pagar
 - g) Tanah Merah
 - h) Tanjong Changi
 - i) Sembawang
 - j) Singapore Strait - Horsburgh Lighthouse
3. **Hourly Tidal Stream Predictions** at the following stations:
 - a) Main Strait - off Tuas View
 - b) Sinki Fairway - Banyan
 - c) Jong Fairway - off Sisters Buoy
 - d) Main Strait - off Shell SBM Buoy
 - e) Sentosa - off Cruise Bay
 - f) East Buran
 - g) Main Strait - Eastern Petroleum A
 - h) Kuala Johor - off Malang Tiga
4. **Maximum and Slack Tidal Stream Predictions** at the following stations:
 - a) Malacca Strait - off Pulau Iyu Kecil Light
 - b) Singapore Strait - Selat Phillip
 - c) Singapore Strait - Karang Banteng (Buffalo Rock)
 - d) Singapore Strait - Horsburgh Lighthouse
5. **Malacca Strait - High and Low Water Predictions** at the following stations:
 - a) Kedah Pier, Pulau Pinang
 - b) Port Dickson
 - c) Kuala Batu Pahat

The locations of the above stations are shown in the chartlets below:

WGS84

JOHOR (MALAYSIA)

JOHOR (MALAYSIA)

JOHOR (MALAYSIA)

JOHOR (MALAYSIA)

JOHOR (MALAYSIA)

SINGAPORE

West Tuas pg.19-30

Tuas View

Jurong Island

Sultan Shoal Lighthouse pg.31-42

Sinki Fairway - Banyan pg.151-162

West Coast pg.55-66

Sentosa off Cruise Bay pg.187-198

Bukom pg.67-78

Jong Fairway - off Sisters Buoy pg.163-174

Main Strait - off Shell SBM Buoy pg.175-186

Raffles Lighthouse pg.43-54

Tanjong Pagar pg.11-14 pg.79-90

East Buraun pg.199-210

Main Strait - Eastern Petroleum A pg.211-222

Tanah Merah pg.91-102

Tanjong Changi pg.103-114

Kuala Johor - off Malang Tiga pg.223-234

P. Ubin

P. Tekong

P. Batam (INDONESIA)

P. Belakang Batam

Legend:

- Predicted High And Low Waters
- Predicted Hourly Tidal Heights
- Predicted Hourly Tidal Streams

CAUTION: Chart is for illustrative purposes only and must not be used for navigation.

Singapore Port Limit

Singapore Port Limit

Singapore Port Limit

1° 20' N

1° 10' N

40° E

50° E

104° E

01°29'23.979"N

103°56'36.63"E

01°10'51.2 078°N

LOCATIONS OF PREDICTED TIDAL HEIGHT AND TIDAL STREAM STATIONS WITHIN SINGAPORE PORT LIMIT

CAUTION :
Chartlet is for illustrative purposes only
and must not be used for navigation.

Legend :

- Maximum and Slack Tidal Stream Predictions
- Predicted Hourly Tidal Heights

Off Horsburgh Lighthouse
pg. 247-250

Horsburgh Lighthouse
pg. 127-138

Off Pulau Iyu Kecil Light
pg. 235-238

Pulau Karimun Besar

P. Papan

P. Bulan

Pulau Batam (INDONESIA)

Pulau Bintan (INDONESIA)

Selat Phillip
pg. 239-242

Philip Channel

Karang Banteng (Buffalo Rock)
pg. 243-246

P. Jangkat

Malacca Strait

Selat Durian

Selat Riau

Johor (MALAYSIA)

Singapore

WGS84

30°

104°

30°

1°

0°59'48.492"E

104°54'36.987"E

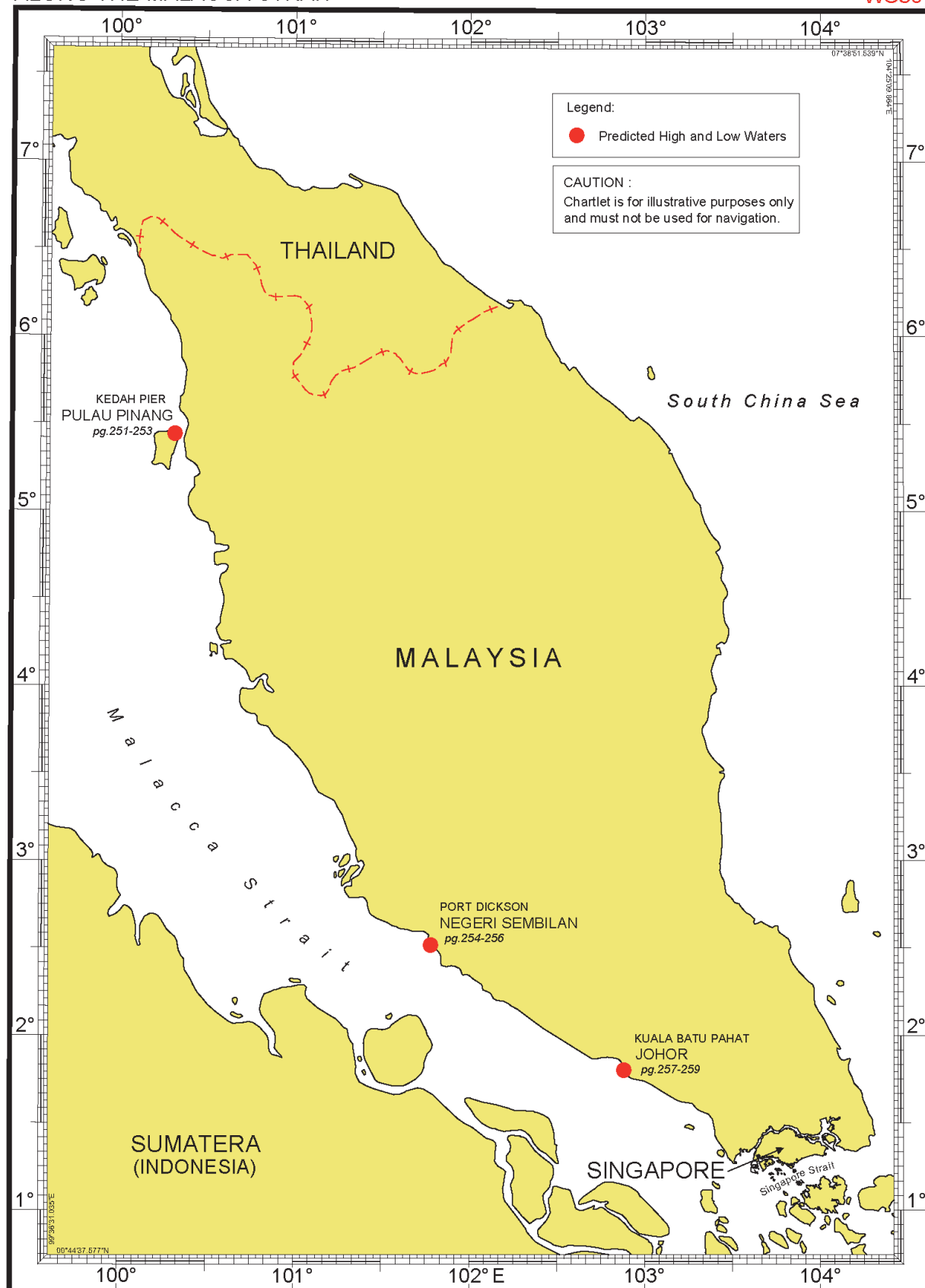
LOCATIONS OF PREDICTED TIDAL HEIGHT AND TIDAL STREAM STATIONS OUTSIDE SINGAPORE PORT LIMIT

II NEW CHARTS AND PUBLICATIONS

Tidal Prediction Stations In Malacca Strait

LOCATIONS OF PREDICTED TIDAL HEIGHT STATIONS
ALONG THE MALACCA STRAIT

WGS84



II NEW CHARTS AND PUBLICATIONS

NEW EDITION DUAL BADGED CHARTS TO BE PUBLISHED ON 15TH SEPTEMBER 2022

Chart Number : 4030

Title : Port of Singapore
West Jurong Anchorages and Temasek Fairway

Coverage : Lat 01° 11·05' N 01° 17·00' N
Long 103° 36·70' E 103° 40·70' E

Scale : 1 : 10 000

Date to be Published : 15th September 2022

Size of Chart : 742.0 x 1096.5 mm

Description : This new edition includes updated surveys, changes to topography, aids to navigation.
The existing chart of the same number published on 29th October 2020 will be superseded.

Chart Number : 4032

Title : Port of Singapore
Sinki Fairway

Coverage : Lat 01° 12·25' N 01° 16·30' N
Long 103° 40·20' E 103° 46·13' E

Scale : 1 : 10 000

Date to be Published : 15th September 2022

Size of Chart : 1100.0 x 746.4 mm

Description : This new edition includes updated surveys, changes to topography, aids to navigation.
The existing chart of the same number published on 5th November 2020 will be superseded.

Chart Number : 4034

Title : Port of Singapore
East Jurong Channel, Pasir Panjang Terminal and West Keppel Fairway

Coverage : Lat 01° 14·50' N 01° 18·55' N
Long 103° 42·70' E 103° 48·60' E

Scale : 1 : 10 000

Date to be Published : 15th September 2022

Size of Chart : 1094.4 x 746.4 mm

Description : This new edition includes updated surveys, changes to topography, aids to navigation,
The existing chart of the same number published on 5th November 2020 will be superseded.

II NEW CHARTS AND PUBLICATIONS

NEW EDITION SINGAPORE ENC TO BE RELEASED ON 15TH SEPTEMBER 2022

ENC Name : SG5C4030

Location : Western Jurong Anchorages and Temasek Fairway

Coverage : Lat 01° 11-050' N 01° 16-300' N
Long 103° 36-700' E 103° 40-640' E

Compilation Scale : 1 : 8 000

Date Released : 15th September 2022

Description : This new edition includes updated surveys, changes to topography, aids to navigation.
The existing cell of the same number released on 29th October 2020 will be superseded.

ENC Name : SG5C4032

Location : Sinki Fairway

Coverage : Lat 01° 12-250' N 01° 16-300' N
Long 103° 40-640' E 103° 45-580' E

Compilation Scale : 1 : 8 000

Date Released : 15th September 2022

Description : This new edition includes updated surveys, changes to topography, aids to navigation.
The existing cell of the same number released on 5th November 2020 will be superseded.

ENC Name : SG5C4034

Location : East Jurong Channel, Pasir Panjang Terminal and West Keppel Fairway

Coverage : Lat 01° 16-300' N 01° 18-550' N
Long 103° 42-700' E 103° 46-360' E

Compilation Scale : 1 : 8 000

Date Released : 15th September 2022

Description : This new edition includes updated surveys, changes to topography, aids to navigation.
The existing cell of the same number released on 5th November 2020 will be superseded.

II
NOTICES TO MARINERS AND CHART CORRECTIONS

NIL

II
TEMPORARY AND PRELIMINARY NOTICES

NIL

II
TEMPORARY AND PRELIMINARY NOTICES

Cancelled Temporary and Preliminary Notices

<i>No. of Notices</i>	<i>Subject</i>	<i>Charts Affected</i>
106T/2021	Maintenance of Banyan beacon	Singaporean GSP1/SP1, 500, 501, Dual Badged BA4031, BA4032, BA4039, BA4040, SG5C4032

III NAVIGATIONAL INFORMATION

*(NM 40/2022)

SINGAPORE PORT MARINE NOTICES / CIRCULARS

The Port Marine Notices/Circulars shortlisted below would be of particular interest to Mariners. Details and complete list of Port Marine Notices/Circulars are available at this link:

<http://www.mpa.gov.sg/web/portal/home/port-of-singapore/circulars-and-notices>

PMC No.	Subject
14/2022	Crew change for cargo ships in the Port of Singapore and application for vaccination
15/2022	Lifting of mandatory maritime declaration of health for vessels arriving in the Port of Singapore
16/2022	Additional provision applicable to fumigated cargo transport unit (UN 3359, IMO Class 9)
17/2022	Resumption of ship inspection for the issuance of ship sanitation certificate (SSC)

PMN No.	Subject
040/2022	Works at Tuas Terminal phase 2
041/2022	Dredging and upgrading works at Jurong Port Berth J9
043/2022	Underwater works South of Pulau Bukom Kechil
044/2022	Testing of Autonomous Underwater Vehicle (AUV) off Tanah Merah Ferry Terminal
046/2022	Construction of temporary cofferdam at west of Pulau Punggol Barat
047/2022	Installation of jetty & floating pontoons at Coney Island

*Source: Maritime and Port Authority of Singapore

III AMENDMENTS TO PUBLICATIONS

*(NM 41/2022) UPDATING OF PUBLICATION “SINGAPORE PORT INFORMATION 2022/2023”

LEAST DEPTHS OF ANCHORAGES

B WESTERN SECTOR

1. Page 105

Amend the following:

No.	Anchorage	Depth (m)	Latitude (N) Longitude (E)
26	Sudong Petroleum Holding (ASPH)	21.8m	1°09·917' 103°43·112'
28	Sudong Special Purpose (ASSPU)	17.7m	1°11·040' 103°42·434'
29	Sudong Holding (ASH)	23.2m	1°12·051' 103°39·978'

CONTROLLING DEPTHS OF NAVIGATIONAL CHANNELS AND FAIRWAYS

2. Page 109

Amend the following:

LOCATIONS		DEPTHS (m)	REMARKS
Sinki Fairway	Selat Sinki (dredged channel)	18·1	Note: A high spot of 11·5m (rock) exists bearing 199 degree(T) x 617m from Pandan Beacon

WHARVES AND BERTHS

3. Page 162

TUAS F2 TERMINAL (1°15·2'N, 103°37·5'E)

Amend the following:

Berth	Length of Berth Box	Max LOA	Depth Alongside (Year Surveyed)	Approach Depth
T204	400m	-	23·0m (2021)	22.9m
T205	400m	-	23·0m (2021)	22.9m
T208	400m	-	23·0m (2019)	22.9m

*Source: Maritime and Port Authority of Singapore

III AMENDMENTS TO PUBLICATIONS

*(NM 41/2022) UPDATING OF PUBLICATION "SINGAPORE PORT INFORMATION 2022/2023"

3. **Page 174**

PULAU SEBAROK (SINGAPORT CLEANSEAS PTE LTD) (1°12·5'N, 103°47·5'E)

Amend the following:

Berth	Length of Berth Box	Max LOA	Depth Alongside (Year Surveyed)	Approach Depth
OSEP1	200m	150m	13.8m (2021)	10.5m

DISTRIBUTORS FOR THE MARITIME AND PORT AUTHORITY OF SINGAPORE PUBLICATIONS

4. **Page 205**

Amend the following:

(previously Motion Smith)

Distributor : **Novaco Navigation Pte Ltd**
 Address : 6, Jurong Pier Road,
 Singapore 619158 (**Operating address**)
 Telephone : **(65) 3163 3253** (After Office hours: (65) 8163 9993)
 Email : **joell@novaco.co.uk**
 Internet Web Site : **<https://novaco.co.uk>**

Distributor : OneOcean Maritime Solutions Pte. Limited
 Address : **230, Victoria Street,**
Level 15, Bugis Junction Towers,
Singapore 188024
 Telephone : (65) 6545 9880
 Email : **Singapore@oneocean.com**
 Internet Web Site : **www.oneocean.com**

*Source: Maritime and Port Authority of Singapore

III

AMENDMENTS TO PUBLICATIONS

MPA APPOINTED ELECTRONIC NAVIGATIONAL CHART (ENC) DISTRIBUTORS

5. Page 206

Delete the following:

Japan Hydrographic Association	Daiichi Sogo Bldg, 6F 1-6-6, Hanedakuko, Ota-ku Tokyo 144-0041, Japan	Tel. No.: +81 3 5708 7093 Fax No.: +81 3 5708 7094 Email: enc-support@jha.jp Website: http://www.jha.or.jp/en/jha/
Motion Smith	6 Jurong Pier Road Singapore 619158	Tel. No.: +65 6220 5098 Fax No.: +65 6225 4902 Email: sales@motsmith.com Website: https://www.motsmith.com

*Source: Maritime and Port Authority of Singapore

IV

REPRINT OF MARITIME SAFETY INFORMATION

The following Maritime Safety Information have been shortlisted, as they would be of particular interest to mariners.

TT418

WEST BOUND DEEP DRAFT VESSELS AND VLCCS ARE REMINDED TO COMPLY WITH THE RULES OF VESSELS NAVIGATING THROUGH THE STRAITS OF MALACCA AND SINGAPORE (SOMS). THEY SHALL ALLOW FOR AN UKC OF AT LEAST 3.5 METRES AT ALL TIMES DURING THE ENTIRE PASSAGE THROUGH THE SOMS AND AS FAR AS IT IS SAFE AND PRACTICABLE, PROCEED AT A SPEED OF NOT MORE THAN 12 KTS OVER THE GROUND IN THE WESTBOUND LANE OF THE SINGAPORE STRAIT (BETWEEN SOUTH OF ST JOHN'S ISLAND & RAFFLES LIGHTHOUSE). THEY ARE ADVISED TO BROADCAST, 8 HOURS BEFORE ENTERING THE TSS, NAVIGATIONAL INFORMATION GIVING NAME, DEADWEIGHT, DRAUGHT, SPEED AND TIMES OF PASSING HORSBURGH LIGHTHOUSE AND RAFFLES LIGHTHOUSE.

TT961

VESSELS INTENDING TO CROSS THE TRAFFIC SEPARATION SCHEME (TSS) OR PRECAUTIONARY AREAS IN THE SINGAPORE STRAIT DURING THE HOURS OF DARKNESS ARE RECOMMENDED TO DISPLAY THE NIGHT SIGNALS CONSISTING OF 3 ALL ROUND GREEN LIGHTS IN A VERTICAL LINE AS DETAILED IN THE MARITIME AND PORT AUTHORITY OF SINGAPORE'S PORT MARINE CIRCULAR, 04 OF 2013 DATED 7 MAY 2013.

TT273

ALL VESSELS ARE ADVISED TO NAVIGATE WITH CAUTION, COMPLY WITH THE COLREGS, MAINTAIN VHF RADIO WATCH AND LISTEN TO TRAFFIC INFORMATION WHEN NAVIGATING IN THE SINGAPORE STRAIT AND PORT WATERS. MARINERS ARE ALSO ADVISED TO KEEP A GOOD LOOKOUT OF FREQUENT FERRIES CROSSING THE SINGAPORE STRAIT.

TT175

VESSELS IN EAST JOHOR STRAIT ARE ADVISED TO NAVIGATE WITH PARTICULAR ALERTNESS AND CAUTION WHEN NEAR THE PROJECT AREAS OFF PULAU TEKONG, CHANGI AND MALANG PAPAN AS SHALLOW WATER AREAS EXIST. VESSELS ARE REMINDED TO PROCEED AT A SAFE SPEED AND MAINTAIN A PROPER LOOK-OUT, PARTICULARLY FOR TUGS AND BARGES NAVIGATING NEAR THE PROJECT AREAS AND PASSENGER FERRIES CROSSING BETWEEN CHANGI AND PULAU TEKONG AND VICINITY OF PASIR GUDANG.

TT865 (Amended 261600H July 22)

BATU BERHENTI BUOY FI (2) 5s AT 01-10.25N 103-49.00E HAS BEEN REMOVED FOR MAINTENANCE. ALL VESSELS NAVIGATING IN THE VICINITY ARE ADVISED TO NAVIGATE WITH CAUTION.

TT863

THERE IS A REPORT OF UNAUTHORISED BOARDING ON 23 JULY 2022 AT 0105H IN POSITION LAT 01-08.75N LONG 103-29.02E.

MARINERS ARE ADVISED TO KEEP A GOOD LOOK OUT AND MAINTAIN ANTI-PIRACY WATCH.

TT765 (Amended 200930H)

CONDUCTING OF RECLAMATION WORKS BOUNDED BY THE FOLLOWING COORDINATES FROM 1 SEP 2021.

1. 01-19.63N 104-24.08E
2. 01-20.05N 104-24.08E
3. 01-20.28N 104-24.51E
4. 01-20.26N 104-24.59E
5. 01-20.18N 104-24.70E
6. 01-20.06N 104-24.78E
7. 01-19.88N 104-24.84E
8. 01-19.68N 104-24.83E
9. 01-19.63N 104-24.80E

VESSELS PASSING IN THE VICINITY ARE ADVISED TO GIVE A WIDE BERTH AND NAVIGATE WITH CAUTION.

IV

REPRINT OF MARITIME SAFETY INFORMATION

The following Maritime Safety Information have been shortlisted, as they would be of particular interest to mariners.

TT643

THERE IS REPORT OF CONCENTRATION OF FISHING VESSELS OBSERVED IN THE EASTBOUND TRAFFIC LANE IN THE VICINITY BETWEEN BUFFALO ROCK AND BATU BERHANTI. ALL VESSELS ARE ADVISED TO PROCEED AT A SAFE SPEED, KEEP A SHARP LOOK OUT AND NAVIGATE WITH EXTREME CAUTION AT ALL TIME.

TT642

ALL MARINERS NAVIGATING THROUGH THE STRAIT OF SINGAPORE ARE REMINDED TO MAINTAIN CLOSE AND CONTINUOUS MONITORING OF VESSEL'S POSITION. IN DETERMINING RISK OF GROUNDING, DIFFERENT METHODS OF POSITION FIXING SHOULD ALSO BE USED AS MEANS OF CROSS-CHECKING.

TT426

ALL MARINERS ARE REMINDED TO NAVIGATE WITH CAUTION IN THE PRECAUTIONARY AREAS AND TSS, MAINTAIN A GOOD LOOKOUT FOR CROSSING TRAFFIC. VESSELS INTENDING TO CROSS THE TSS SHALL DO SO ONLY WHEN IT IS SAFE AND SHALL AT ALL TIMES COMPLY WITH THE COLREGS.

TT399

VESSELS ARRIVING TO SINGAPORE OR TRANSITING THROUGH THE STRAIT ARE RECOMMENDED TO UPDATE THEIR DESTINATION ACCURATELY IN THE AIS TO ENHANCE SITUATIONAL AWARENESS FOR OTHER TRAFFIC IN THE VICINITY. EG: SG-PEBGB FOR PILOT EASTERN BOARDING GROUND BRAVO.

TT363 (AMENDED ON 140821UTC APRIL 2019).

MARINERS ARE REMINDED NOT TO ANCHOR IN ALL AREAS IN THE TSS, INCLUDING PRECAUTIONARY AREAS OF THE STRAITS OF MALACCA AND SINGAPORE AS WELL AS BETWEEN THE LANDWARD LIMITS OF THE TSS AND APPROACHES TO THE PORTS. VESSELS ENTERING ANY PORT IN ANY LITTORAL STATES ARE TO ANCHOR IN THE ANCHORAGES DESIGNATED BY THE RESPECTIVE LITTORAL STATES. MARINERS ARE ALSO REMINDED THAT EVERY CARE SHOULD BE TAKEN TO AVOID ANCHORING IN THE VICINITY OF SUBMARINE CABLES OR PIPELINES.

SR123 (AMENDED ON 100800UTC JUNE 2020).

SEA ROBBERIES ARE REPORTED IN THE SINGAPORE STRAIT. MARINERS ARE TO MAINTAIN A CONSTANT VISUAL AND RADAR WATCH FOR SMALL CRAFT AND REPORT ANY SUSPICIOUS ACTIVITIES IN THE SINGAPORE STRAIT TO VTIS SINGAPORE.

ISSUED BY SINGAPORE PORT OPERATIONS CONTROL CENTRE (as at 27th July 2022)

V

EXTRACT OF ADMIRALTY NOTICES TO MARINERS FOR DUAL BADGED CHARTS

These notices can also be accessed directly from UKHO Website:

<http://www.admiralty.co.uk/maritime-safety-information/admiralty-notices-to-mariners>

2922* SINGAPORE - Depths.

Source: Maritime and Port Authority of Singapore

Chart 4036 [*previous update 1917/22*] WGS84 DATUM

Replace depth, *114*, with depth, *113* 1° 12'·168N., 103° 44'·394E.

Chart 4039 [*previous update 1917/22*] WGS84 DATUM

Insert depth, *113* 1° 12'·17N., 103° 44'·39E.

Chart 4040 [*previous update 2568/22*] WGS84 DATUM

Insert depth, *113* 1° 12'·17N., 103° 44'·39E.

2939* SINGAPORE - NM Block.

Source: Maritime and Port Authority of Singapore

Chart 4044 [*previous update 2620/22*] WGS84 DATUM

Insert the accompanying block, centred on: 1° 27'·6N., 103° 47'·3E.

2940(P)/22 SINGAPORE - Pontoon.

Source: Maritime and Port Authority of Singapore

1.

<i>Update</i>	<i>Feature</i>	<i>Position</i>
Insert	pontoon, single firm line, joining:	1° 27'·61N., 103° 47'·14E. 1° 27'·56N., 103° 47'·17E. 1° 27'·69N., 103° 47'·38E. 1° 27'·70N., 103° 47'·37E. 1° 27'·71N., 103° 47'·39E. 1° 27'·73N., 103° 47'·37E. 1° 27'·72N., 103° 47'·36E. 1° 27'·73N., 103° 47'·35E.

Chart affected - 8285

Updated to Admiralty Notices to Mariners no. 30 of 2022 dated 28th July 2022

HYDROGRAPHIC NOTE - Instructions

1. Mariners are requested to notify the Chief Hydrographer, Maritime and Port Authority of Singapore, when new or suspected dangers to navigation are discovered, changes are observed in aids to navigation or where corrections to nautical publications may be necessary. Reports, which cannot be confirmed or are lacking in certain details, should not be withheld.
2. Any ambiguities of time, positioning and depth should be stressed and any firm expectation of being able to check the information provided on a following voyage should be mentioned.
3. Mariners using satellite position fixing systems, eg. GPS, should provide details of equipment and datum used (where applicable). Where bearings (true or magnetic) are taken visually or by radar to fix a position, it should include more than two objects in order to provide a check on its accuracy. A position may also be defined by bearing and distance from a conspicuous object eg. beacon, lighthouse etc.
4. The note should include a tracing or a digital image of the chart used and the details should be clearly marked.
5. Echo sounders frequently register greater depths than the advertised maximum depth for the equipment, eg. a trace appearing at 50 metres may be in fact be 550 metres or even 1050 metres for equipment whose maximum depth is 500 metres. Erroneous depths caused by 2nd transmission error can usually be recognised by the following:
 - (a) the tracing being weaker than normal for the depth registered,
 - (b) the trace appearing to pass through the transmission line,
 - (c) the feathery nature of the trace.
6. Upon receipt of a hydrographic note, a Notice to Mariners may be issued. The sender's vessel or name is quoted as the source unless the same information is also received in foreign Notices to Mariners.
7. Reports of shoals, uncharted dangers and defects in aids to navigation may also be made to the appropriate Singapore Port Operations Control Centre on VHF Channels 10, 12, 14, 68 or 73.

HYDROGRAPHIC NOTE

To:

Chief Hydrographer
Maritime and Port Authority of Singapore
7B Keppel Road #20-00 Tanjong Pagar Complex
Singapore 089055

Tel : 1800 272 7777 / (65) 6272 7777

Email : hydrographic@mpa.gov.sg

Sender's Contact Details :

Date :

Name of Vessel :

Address of Sender :

Tel : Fax :

Email :

Nature of Observation :

General Location :

Subject :

Position : Lat. Long.

Charts Used :

Date & Time of Observation :

Details :
.....
.....
.....

Attachment :

Equipment Used :

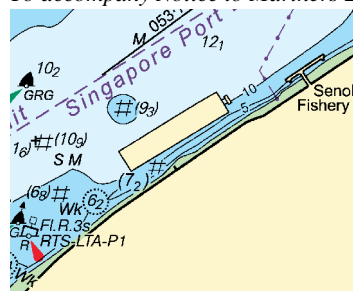
Type of Position Fixing : GPS / DGPS Others :

Type of Echo Sounder :

Name and Signature :

Ship's/Company's Stamp :

To accompany Notice to Mariners 2939/22. Image Size (mm) 37.6 by 45.3



Block for Chart No 4044