



## SINGAPOREAN NOTICES TO MARINERS

SECTION	CONTENT	Page
I	Affected Charts & Publications	1
II	New Charts and Publications	2
	Notices to Mariners and Chart Corrections	5
	Temporary and Preliminary Notices	6
	Cancelled Temporary and Preliminary Notices	7
III	Navigational Information	8
	Amendments to Publications	9
IV	Reprint of Maritime Safety Information	10
V	Extract of Admiralty Notices to Mariners for Dual-Badged Charts	13

The monthly Notices to Mariners contain information required to keep charts and publications published by the Hydrographic Division, Maritime and Port Authority of Singapore up-to-date.

Mariners are requested to notify the Chief Hydrographer, Maritime and Port Authority of Singapore, immediately of the discovery of new or suspected dangers to navigation, observed changes to aids to navigation and ways Singaporean Charts and Publications can be improved. The Hydrographic Note on the back page should be used for this purpose.

Detailed information of charts and publications (coverage of charts, latest editions and distributors) are available on the Maritime and Port Authority of Singapore's Website: [www.mpa.gov.sg](http://www.mpa.gov.sg)

**MPA Telegram Channel:** MPA has launched a Telegram channel for notices and circulars. To stay updated, please subscribe via the following link <https://go.gov.sg/mpa-telegram> or scan the QR code:



<https://go.gov.sg/mpa-telegram>

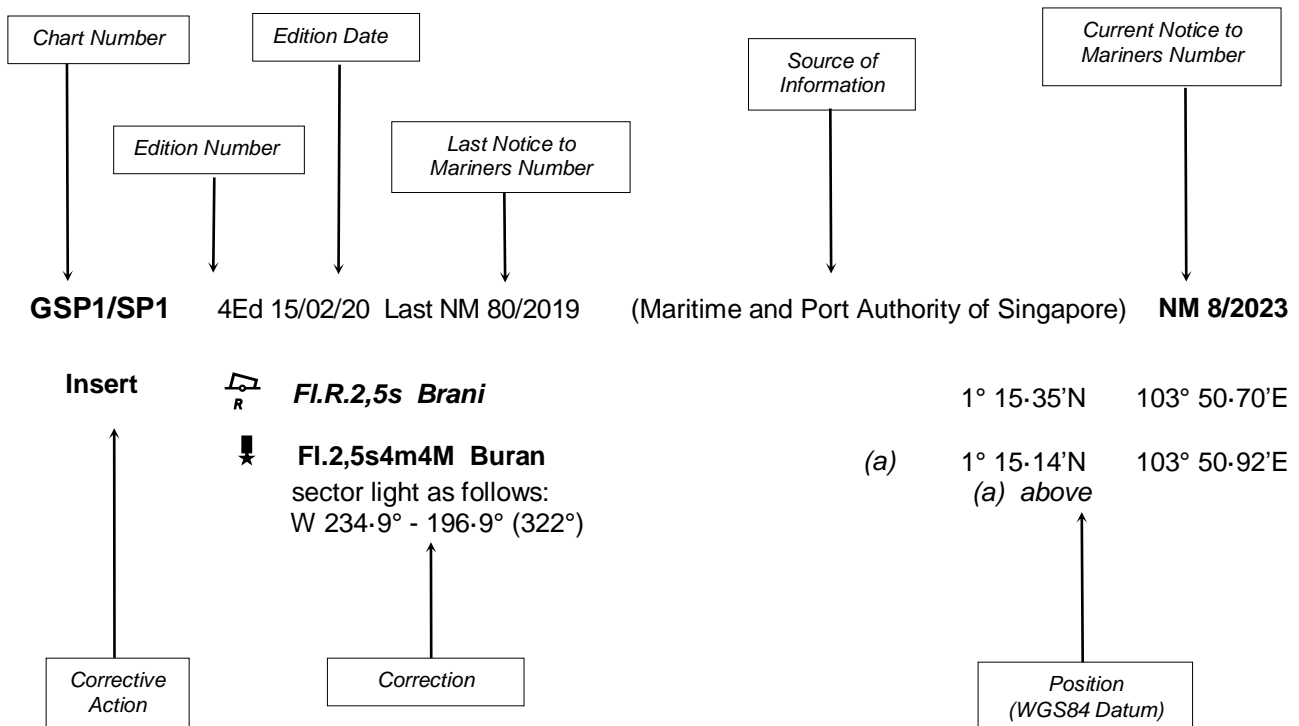
- [Singaporean Notice to Mariners](#)
- [Singaporean Charts](#)
- [Dual-Badged Charts](#)
- [Singapore ENC](#)
- [Malacca and Singapore Straits ENC](#)
- [Singapore Port Information](#)
- [Singapore Tide Tables](#)

### Contact information:

Hydrographic Division  
Maritime and Port Authority of Singapore  
7B Keppel Road  
#20-00 Tanjong Pagar Complex  
Singapore 089055  
Tel : 1800 272 7777 / (65) 6272 7777  
Email : [hydrographic@mpa.gov.sg](mailto:hydrographic@mpa.gov.sg)

## EXPLANATION OF FORMAT

The elements of a typical chart correction are explained below.



### Notes:

- Notice to Mariners number followed by:  
**T** indicates a Temporary Notice (eg. **NM 9T/2023**).  
**P** indicates a Preliminary Notice (eg. **NM 10P/2023**).
- Bearings are true reckoned clockwise from 000° to 359°; those relating to lights are from seaward.
- Heights and elevations are above Mean High Water Springs.
- # indicates where amendments are made.
- \* indicates source from Maritime and Port Authority of Singapore.

I  
**AFFECTED CHARTS AND PUBLICATIONS**

**INDEX OF NOTICES**

<b>NOTICE NO.</b>	<b>DESCRIPTION</b>	<b>PAGE NO.</b>
-	New Charts and Publications	2 - 4
*44	Singaporean Chart GSP1/SP1	5
-	Cancelled Temporary and Preliminary Notices	7
*45	Singapore Port Marine Notices/Circulars	8
*46	Amendments to Publications	9
-	Reprint of Maritime Safety Information	10
-	Extract of Admiralty Notices to Mariners for Dual-Badged Charts	13

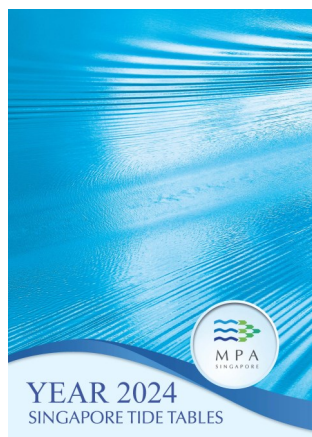
\*Source: Maritime and Port Authority of Singapore

## II NEW CHARTS AND PUBLICATIONS

### SINGAPORE TIDE TABLES YEAR 2024 TO BE PUBLISHED ON 4<sup>TH</sup> SEPTEMBER 2023

#### Summary of Publication

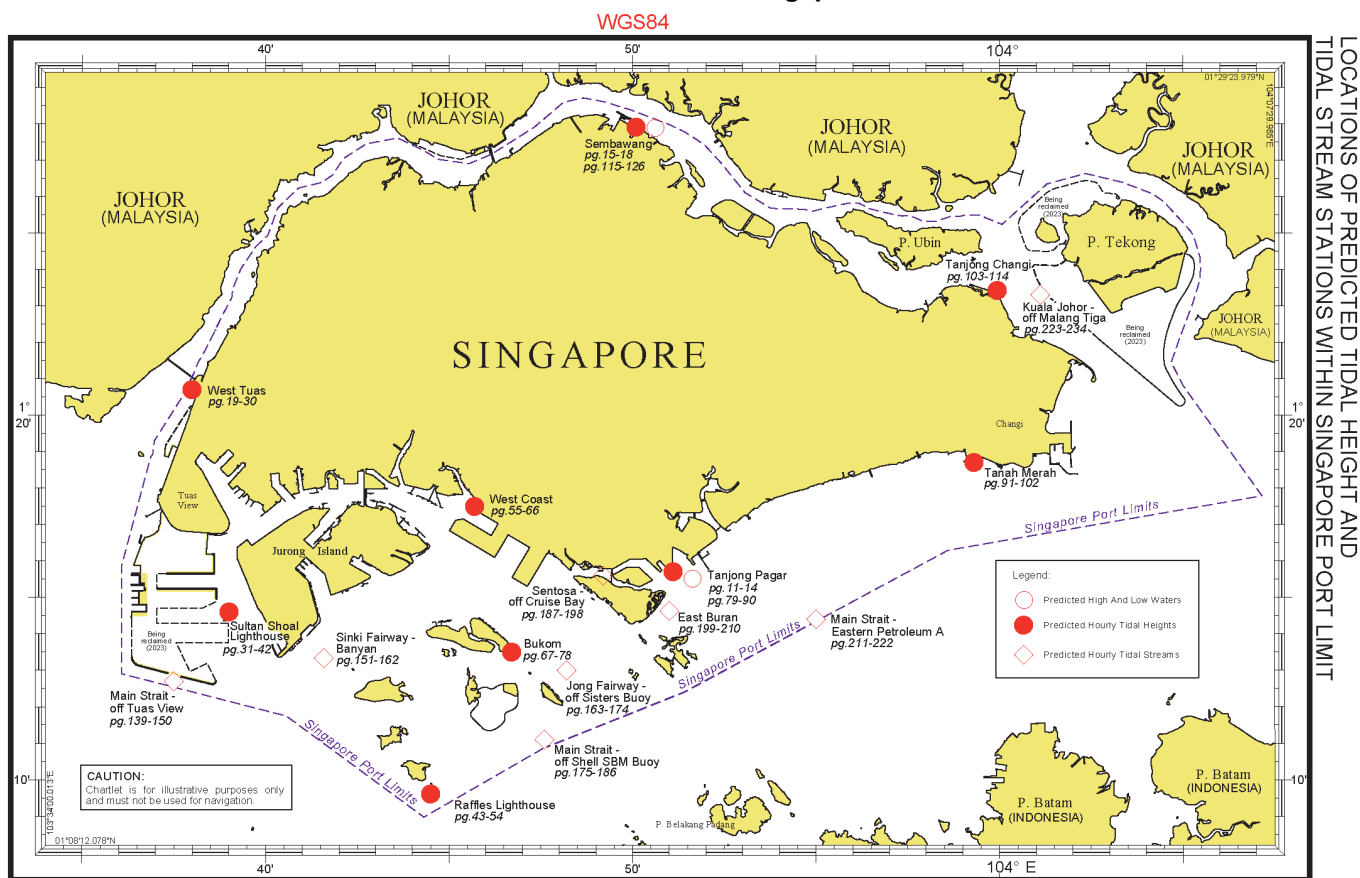
This publication contains Tidal Height and Tidal Stream Predictions covering stations in Singapore Port Waters and along the Straits of Malacca and Singapore.



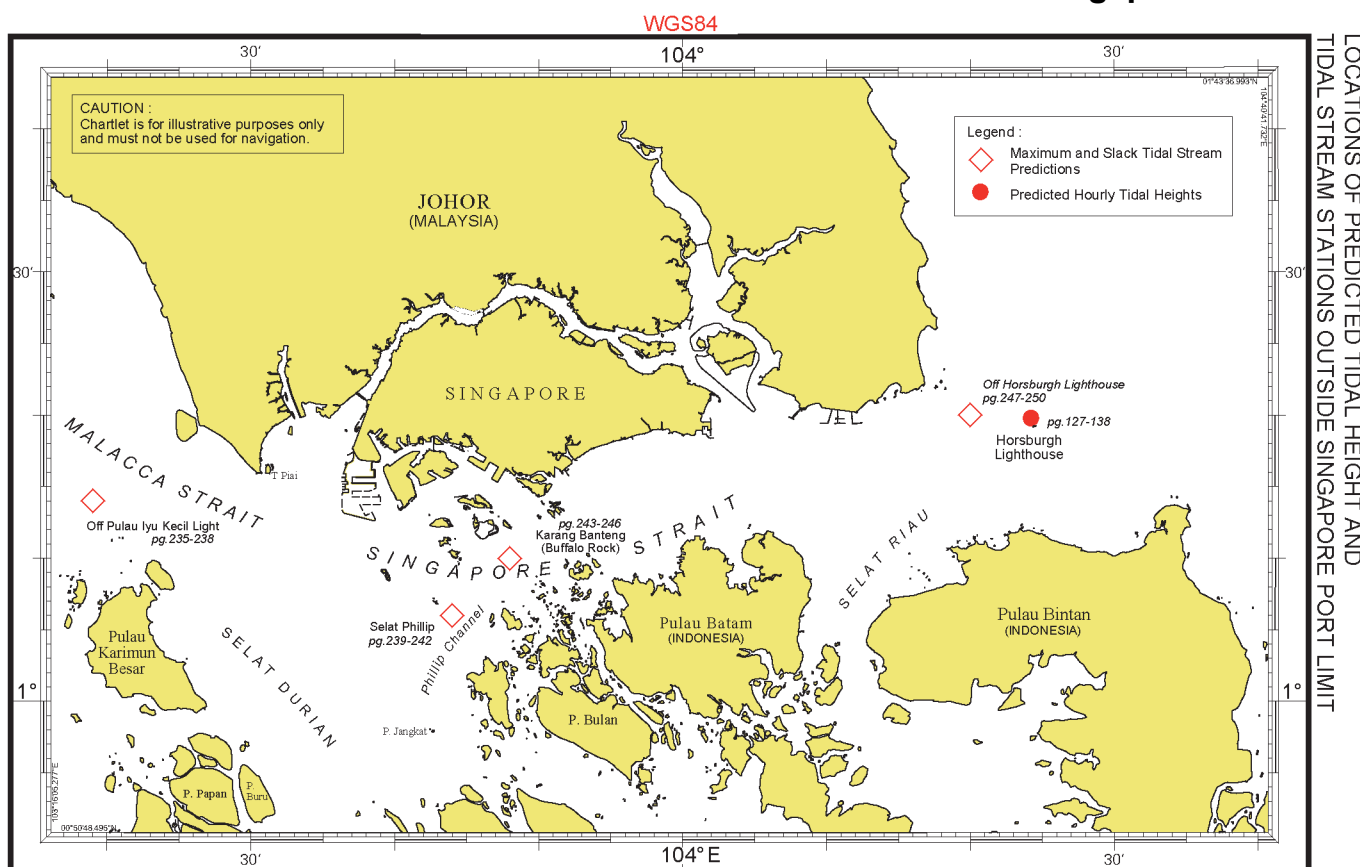
1. **High and Low Water Predictions** at the following stations:
  - a) Tanjong Pagar
  - b) Sembawang
2. **Hourly Tidal Height Predictions** at the following stations:
  - a) West Tuas
  - b) Sultan Shoal Lighthouse
  - c) Raffles Lighthouse
  - d) West Coast
  - e) Bukom
  - f) Tanjong Pagar
  - g) Tanah Merah
  - h) Tanjong Changi
  - i) Sembawang
  - j) Singapore Strait - Horsburgh Lighthouse
3. **Hourly Tidal Stream Predictions** at the following stations:
  - a) Main Strait - off Tuas View
  - b) Sinki Fairway - Banyan
  - c) Jong Fairway - off Sisters Buoy
  - d) Main Strait - off Shell SBM Buoy
  - e) Sentosa - off Cruise Bay
  - f) East Buran
  - g) Main Strait - Eastern Petroleum A
  - h) Kuala Johor - off Malang Tiga
4. **Maximum and Slack Tidal Stream Predictions** at the following stations:

## II NEW CHARTS AND PUBLICATIONS

### Tidal Prediction Stations within Singapore Port Waters



### Tidal Prediction Stations within Straits of Malacca and Singapore

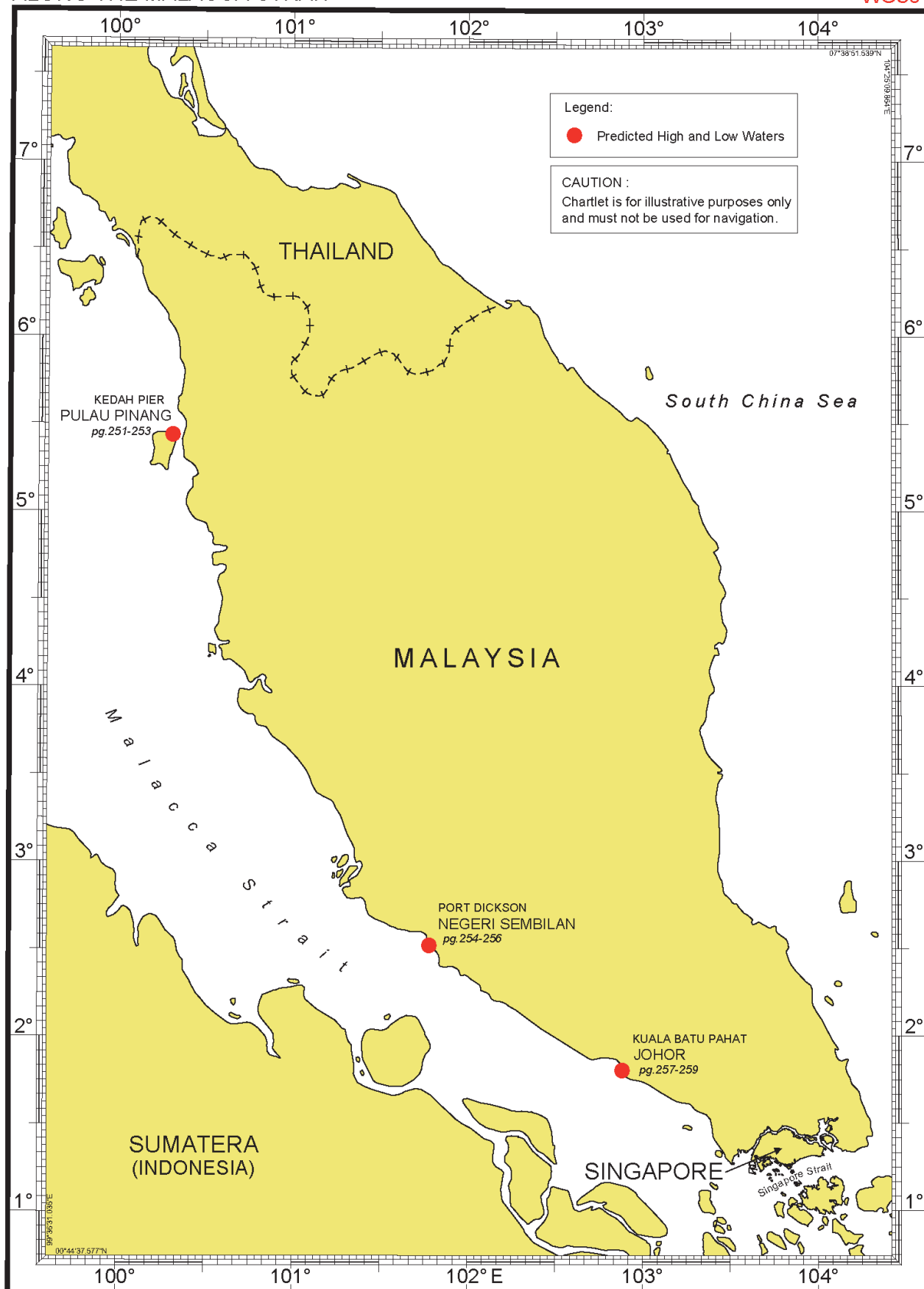


## II NEW CHARTS AND PUBLICATIONS

### Tidal Prediction Stations In Malacca Strait

LOCATIONS OF PREDICTED TIDAL HEIGHT STATIONS  
ALONG THE MALACCA STRAIT

WGS84



**II**  
**NOTICES TO MARINERS AND CHART CORRECTIONS**

**GSP1/SP1** 7 Ed 01/02/23 Last NM 37/2023 (Maritime and Port Authority of Singapore) **\*NM 44/2023**

**Delete**  *Q, North SMK* 1°12'89"N 103°46'04'E

---

\*Source: Maritime and Port Authority of Singapore

**II**  
**TEMPORARY AND PRELIMINARY NOTICES**

**NIL**



**II**  
**TEMPORARY AND PRELIMINARY NOTICES**

**Cancelled Temporary and Preliminary Notices**

<i>No. of Notices</i>	<i>Subject</i>	<i>Charts Affected</i>
9T/2023	Sunken vessel in Sudong Special Purpose (ASSPU) Anchorage	Singaporean GSP1/SP1, 500, 501, Dual Badged BA4031, BA4039, BA4040 Singapore ENC SG5C4031

### III NAVIGATIONAL INFORMATION

#### \*(NM 45/2023) SINGAPORE PORT MARINE NOTICES / CIRCULARS

The Port Marine Notices/Circulars shortlisted below would be of particular interest to Mariners. Details and complete list of Port Marine Notices/Circulars are available at this link:

<http://www.mpa.gov.sg/web/portal/home/port-of-singapore/circulars-and-notices>

#### PMC No. Subject

09/2023 Business continuity plan for haze

---

#### PMN No. Subject

57/2023 Dredging work of Tanjong Penjuru

59/2023 Repair works at Changi Beach

60/2023 Demolition works at Sembawang camp jetty

61/2023 Soil investigation work off AVLCC (Very Large Crude Tanker Anchorage) & Tuas View Extension

63/2023 Underwater works south of Pulau Bukom Kechil and at Shell Single Buoy Mooring

---

\*Source: Maritime and Port Authority of Singapore

### III AMENDMENTS TO PUBLICATIONS

\*(NM 46/2023) UPDATING OF PUBLICATION “SINGAPORE PORT INFORMATION 2022/2023”

#### CHARACTERISTICS OF AIDS TO NAVIGATION

SELAT PAUH (Cont/)

1. Page 145

Delete the following:

Name Of Beacon / Buoy	Position Lat. N Long. E Deg Min	Structure, Colour & Shape	Light Characteristic	Owner
North SMK	01°12·889' 103°46·037'	Double black cones topmark point upward on black	Q.W	SOSB-DIAP CONSORTIUM

---

\*Source: Maritime and Port Authority of Singapore

#### IV

### REPRINT OF MARITIME SAFETY INFORMATION

TT418

WEST BOUND DEEP DRAFT VESSELS AND VLCCS ARE REMINDED TO COMPLY WITH THE RULES OF VESSELS NAVIGATING THROUGH THE STRAITS OF MALACCA AND SINGAPORE (SOMS). THEY SHALL ALLOW FOR AN UKC OF AT LEAST 3.5 METRES AT ALL TIMES DURING THE ENTIRE PASSAGE THROUGH THE SOMS AND AS FAR AS IT IS SAFE AND PRACTICABLE, PROCEED AT A SPEED OF NOT MORE THAN 12 KTS OVER THE GROUND IN THE WESTBOUND LANE OF THE SINGAPORE STRAIT (BETWEEN SOUTH OF ST JOHN'S ISLAND & RAFFLES LIGHTHOUSE). THEY ARE ADVISED TO BROADCAST, 8 HOURS BEFORE ENTERING THE TSS, NAVIGATIONAL INFORMATION GIVING NAME, DEADWEIGHT, DRAUGHT, SPEED AND TIMES OF PASSING HORSBURGH LIGHTHOUSE AND RAFFLES LIGHTHOUSE.

TT961

VESSELS INTENDING TO CROSS THE TRAFFIC SEPARATION SCHEME (TSS) OR PRECAUTIONARY AREAS IN THE SINGAPORE STRAIT DURING THE HOURS OF DARKNESS ARE RECOMMENDED TO DISPLAY THE NIGHT SIGNALS CONSISTING OF 3 ALL ROUND GREEN LIGHTS IN A VERTICAL LINE AS DETAILED IN THE MARITIME AND PORT AUTHORITY OF SINGAPORE'S PORT MARINE CIRCULAR, 04 OF 2013 DATED 7 MAY 2013.

TT273

ALL VESSELS ARE ADVISED TO NAVIGATE WITH CAUTION, COMPLY WITH THE COLREGS, MAINTAIN VHF RADIO WATCH AND LISTEN TO TRAFFIC INFORMATION WHEN NAVIGATING IN THE SINGAPORE STRAIT AND PORT WATERS. MARINERS ARE ALSO ADVISED TO KEEP A GOOD LOOKOUT OF FREQUENT FERRIES CROSSING THE SINGAPORE STRAIT.

TT175

VESSELS IN EAST JOHOR STRAIT ARE ADVISED TO NAVIGATE WITH PARTICULAR ALERTNESS AND CAUTION WHEN NEAR THE PROJECT AREAS OFF PULAU TEKONG, CHANGI AND MALANG PAPAN AS SHALLOW WATER AREAS EXIST. VESSELS ARE REMINDED TO PROCEED AT A SAFE SPEED AND MAINTAIN A PROPER LOOK-OUT, PARTICULARLY FOR TUGS AND BARGES NAVIGATING NEAR THE PROJECT AREAS AND PASSENGER FERRIES CROSSING BETWEEN CHANGI AND PULAU TEKONG AND VICINITY OF PASIR GUDANG.

TT990

CABLE VESSEL "ASEAN PROTECTOR" AND ASSISTED BY SAFETY BOAT "CAHAYA ARISYA" IS CARRYING OUT CABLE LAYING WORKS IN THE SINGAPORE STRAIT FROM PORT LIMITS AT SOUTH OF TUAS VIEW CROSS TSS WESTBOUND LANE TO THE EDGE OF THE TSS EASTBOUND LANE OFF NIPAH PRECAUTIONARY AREA OF VTIS SECTOR 7, FROM 25 JUL 2023 TO 25 SEP 2023. TRANSITTING VESSELS ARE ADVISED TO NAVIGATE WITH CAUTION, PROCEED AT SAFE SPEED AND KEEP WELL CLEAR OF THE CABLE VESSEL.

TT992

THERE IS A REPORT OF UNAUTHORISED BOARDING ON 22 JULY 2023 AT 0515LT IN POSITION LAT 01-08.6N LONG 103-28.4E. MARINERS ARE ADVISED TO KEEP A GOOD LOOK OUT AND MAINTAIN ANTI PIRACY WATCH.

TT991

THERE IS A REPORT OF UNAUTHORISED BOARDING ON 22 JULY 2023 AT 0337LT IN POSITION LAT 01-04.90 LONG 103-43.0E. MARINERS ARE ADVISED TO KEEP A GOOD LOOK OUT AND MAINTAIN ANTI PIRACY WATCH.

## IV

### REPRINT OF MARITIME SAFETY INFORMATION

TT989 (AMENDED 210600Z)

HYDROGRAPHIC VESSEL INVESTIGATOR IS CARRYING OUT SURVEY OPERATIONS IN THE TSS WEST-BOUND LANE AT THE FOLLOWING COORDINATE FROM 17-21 JULY AND 24-28 JULY 2023 AND WILL OPERATE FROM 0900H TO 1600H. VESSELS IN THE VICINITY ARE ADVISED TO KEEP A GOOD LOOKOUT PROCEED AT SAFE SPEED AND NAVIGATE WITH CAUTION.

THE COORDINATES ARE

LOCATION A

1 01-11.9482N 103-39.0548E

2 01-10.1178N 103-43.2703E

3 01-09.2332N 103-43.2698E

4 01-11.2905N 103-39.5465E

LOCATION B

1 01-11.9528N 103-38.6993E

2 01-11.8435N 103-38.6720E

3 01-11.9725N 103-38.1595E

4 01-12.0887N 103-38.1963E

TT933

UNKNOWN YELLOW FLOATING BUOY SIGHTED IN POSITION 01-04.13'N 103-39.00'E. ALL VESSELS NAVIGATING IN THE VICINITY ARE ADVISED TO NAVIGATE WITH CAUTION.

TT926 (AMENDED ON 03 FEB 2023 0932LT)

A WOODEN CRAFT HAS SUNK IN POSITION LAT 01-20.32N LONG 104-03.117E. ALL VESSELS ARE ADVISED TO KEEP WELL CLEAR OF THE NAVIGATIONAL HAZARD.

TT765

CONDUCTING OF RECLAMATION WORKS BOUNDED BY THE FOLLOWING COORDINATES FROM 01 SEP 2021

1. 01-19.63N 104-24.08E

2. 01-20.05N 104-24.08E

3. 01-20.28N 104-24.51E

4. 01-20.26N 104-24.59E

5. 01-20.18N 104-24.70E

6. 01-20.06N 104-24.78E

7. 01-19.88N 104-24.84E

8. 01-19.68N 104-24.83E

9. 01-19.63N 104-24.80E

VESSELS PASSING IN THE VICINITY ARE ADVISED TO GIVE A WIDE BERTH AND NAVIGATE WITH CAUTION.

TT643

THERE IS REPORT OF CONCENTRATION OF FISHING VESSELS OBSERVED IN THE EASTBOUND TRAFFIC LANE IN THE VICINITY BETWEEN BUFFALO ROCK AND BATU BERHANTI. ALL VESSELS ARE ADVISED TO PROCEED AT A SAFE SPEED, KEEP A SHARP LOOK OUT AND NAVIGATE WITH EXTREME CAUTION AT ALL TIME.

TT642

ALL MARINERS NAVIGATING THROUGH THE STRAIT OF SINGAPORE ARE REMINDED TO MAINTAIN CLOSE AND CONTINUOUS MONITORING OF VESSEL-S POSITION. IN DETERMINING RISK OF GROUNDING, DIFFERENT METHODS OF POSITION FIXING SHOULD ALSO BE USED AS MEANS OF CROSS-CHECKING.

TT426

ALL MARINERS ARE REMINDED TO NAVIGATE WITH CAUTION IN THE PRECAUTIONARY AREAS AND TSS, MAINTAIN A GOOD LOOKOUT FOR CROSSING TRAFFIC. VESSELS INTENDING TO CROSS THE TSS SHALL DO SO ONLY WHEN IT IS SAFE AND SHALL AT ALL TIMES COMPLY WITH THE COLREGS.

**IV**  
**REPRINT OF MARITIME SAFETY INFORMATION**

TT399

VESSELS ARRIVING TO SINGAPORE OR TRANSITING THROUGH THE STRAIT ARE RECOMMENDED TO UPDATE THEIR DESTINATION ACCURATELY IN THE AIS TO ENHANCE SITUATIONAL AWARENESS FOR OTHER TRAFFIC IN THE VICINITY. EG: SG-PEBGB FOR PILOT EASTERN BOARDING GROUND BRAVO.

TT363

MARINERS ARE REMINDED NOT TO ANCHOR IN ALL AREAS IN THE TSS ,INCLUDING PRECAUTIONARY AREAS OF THE STRAITS OF MALACCA AND SINGAPORE AS WELL AS BETWEEN THE LANDWARD LIMITS OF THE TSS AND APPROACHES TO THE PORTS. VESSELS ENTERING ANY PORT IN ANY LITTORAL STATES ARE TO ANCHOR IN THE ANCHORAGES DESIGNATED BY THE RESPECTIVE LITTORAL STATES. MARINERS ARE ALSO REMINDED THAT EVERY CARE SHOULD BE TAKEN TO AVOID ANCHORING IN THE VICINITY OF SUBMARINE CABLES OR PIPELINES.

---

ISSUED BY SINGAPORE PORT OPERATIONS CONTROL CENTRE (as at 31<sup>st</sup> July 2023)

## V

# EXTRACT OF ADMIRALTY NOTICES TO MARINERS FOR DUAL BADGED CHARTS



These notices can also be accessed directly from UKHO Website:

<http://www.admiralty.co.uk/maritime-safety-information/admiralty-notices-to-mariners>

## 2317 INDONESIA - Sumatera - NM Blocks. Buoyage. Light-beacons.

Source: Indonesian Chart 49

### Chart 4042 [ *previous update 1547/23* ] WGS84 DATUM

Insert	the accompanying block, centred on:	1° 10'·0N., 104° 13'·3E.
	 Fl.R. 4s	1° 09'·79N., 104° 09'·21E.
Amend	No.4 light-beacon to, Fl.R.2s9m5M	1° 09'·75N., 104° 08'·85E.
	No.3 light-beacon to, Fl.G.3s9m5M	1° 09'·81N., 104° 08'·89E.
Delete	 Fl.R. 4s	1° 09'·81N., 104° 09'·15E.

## 2384 SINGAPORE STRAIT - Legends. NM Block.

Source: Indonesian Notice 43/489/22

### Chart 4031 [ *previous update 1899/23* ] WGS84 DATUM

Amend	legend to, <i>ASINUSA</i> - <i>NTAA</i> , centred on:	1° 10'·208N., 103° 38'·564E.
-------	---	------------------------------

### Chart 4039 [ *previous update 1899/23* ] WGS84 DATUM

Amend	legend to, <i>ASINUSA</i> - <i>NTAA</i> , centred on:	1° 06'·54N., 103° 40'·68E.
		1° 08'·00N., 103° 34'·53E.
		1° 09'·98N., 103° 36'·98E.

### Chart 4040 [ *previous update 1899/23* ] WGS84 DATUM

Amend	legend to, <i>ASINUSA</i> - <i>NTAA</i> , centred on:	1° 07'·60N., 103° 40'·14E.
		1° 08'·38N., 103° 34'·80E.
		1° 09'·97N., 103° 36'·96E.

---

Updated to Admiralty Notices to Mariners no. 28 of 2023 dated 13<sup>th</sup> July 2023

## **HYDROGRAPHIC NOTE - Instructions**

1. Mariners are requested to notify the Chief Hydrographer, Maritime and Port Authority of Singapore, when new or suspected dangers to navigation are discovered, changes are observed in aids to navigation or where corrections to nautical publications may be necessary. Reports, which cannot be confirmed or are lacking in certain details, should not be withheld.
2. Any ambiguities of time, positioning and depth should be stressed and any firm expectation of being able to check the information provided on a following voyage should be mentioned.
3. Mariners using satellite position fixing systems, eg. GPS, should provide details of equipment and datum used (where applicable). Where bearings (true or magnetic) are taken visually or by radar to fix a position, it should include more than two objects in order to provide a check on its accuracy. A position may also be defined by bearing and distance from a conspicuous object eg. beacon, lighthouse etc.
4. The note should include a tracing or a digital image of the chart used and the details should be clearly marked.
5. Echo sounders frequently register greater depths than the advertised maximum depth for the equipment, eg. a trace appearing at 50 metres may in fact be 550 metres or even 1050 metres for equipment whose maximum depth is 500 metres. Erroneous depths caused by 2nd transmission error can usually be recognised by the following:
  - (a) the tracing being weaker than normal for the depth registered,
  - (b) the trace appearing to pass through the transmission line,
  - (c) the feathery nature of the trace.
6. Upon receipt of a hydrographic note, a Notice to Mariners may be issued. The sender's vessel or name is quoted as the source unless the same information is also received in foreign Notices to Mariners.
7. Reports of shoals, uncharted dangers and defects in aids to navigation may also be made to the appropriate Singapore Port Operations Control Centre on VHF Channels 10, 12, 14, 68 or 73.



## HYDROGRAPHIC NOTE

To:  
Chief Hydrographer  
Maritime and Port Authority of Singapore  
7B Keppel Road #20-00 Tanjong Pagar Complex  
Singapore 089055

Tel : 1800 272 7777 / (65) 6272 7777  
Email : [hydrographic@mpa.gov.sg](mailto:hydrographic@mpa.gov.sg)

### **Sender's Contact Details** :

Date : .....

Name of Vessel : .....

Address of Sender : .....

Tel : .....

Email : .....

### **Nature of Observation** :

General Location : .....

Subject : .....

Position : Lat. .... Long. ....

Charts Used : .....

Date & Time of Observation : .....

Details : .....

.....

.....

Attachment : .....

### **Equipment Used** :

Type of Position Fixing : GPS/DGPS Others : .....

Type of Echo Sounder : .....

Name and Signature : .....

Ship's/Company's Stamp : .....

1°15'N

103°45'E



CORRECTION NO.	SNM EDN NO.	LAST CORR N NO.	CHART NO.	Location on Chart		
44	08	35	GSP1/SP1	X		

Caution : some computer printers might distort the tracings.  
Users are advised to check and, if necessary, adjust settings on the printer