



SINGAPOREAN NOTICES TO MARINERS

SECTION	CONTENT	Page
I	Affected Charts & Publications	1
II	New Charts and Publications	2
	Notices to Mariners and Chart Corrections	8
	Temporary and Preliminary Notices	10
	Cancelled Temporary and Preliminary Notices	11
III	Navigational Information	12
	Amendments to Publications	13
IV	Reprint of Maritime Safety Information	14
V	Extract of Admiralty Notices to Mariners for Dual-Badged Charts	16

The monthly Notices to Mariners contain information required to keep charts and publications published by the Hydrographic Division, Maritime and Port Authority of Singapore up-to-date.

Mariners are requested to notify the Chief Hydrographer, Maritime and Port Authority of Singapore, immediately of the discovery of new or suspected dangers to navigation, observed changes to aids to navigation and ways Singaporean Charts and Publications can be improved. The Hydrographic Note on the back page should be used for this purpose.

Detailed information of charts and publications (coverage of charts, latest editions and distributors) are available on the Maritime and Port Authority of Singapore's Website: www.mpa.gov.sg

MPA Telegram Channel: MPA has launched a Telegram channel for notices and circulars. To stay updated, please subscribe via the following link <https://go.gov.sg/mpa-telegram> or scan the QR code:



<https://go.gov.sg/mpa-telegram>

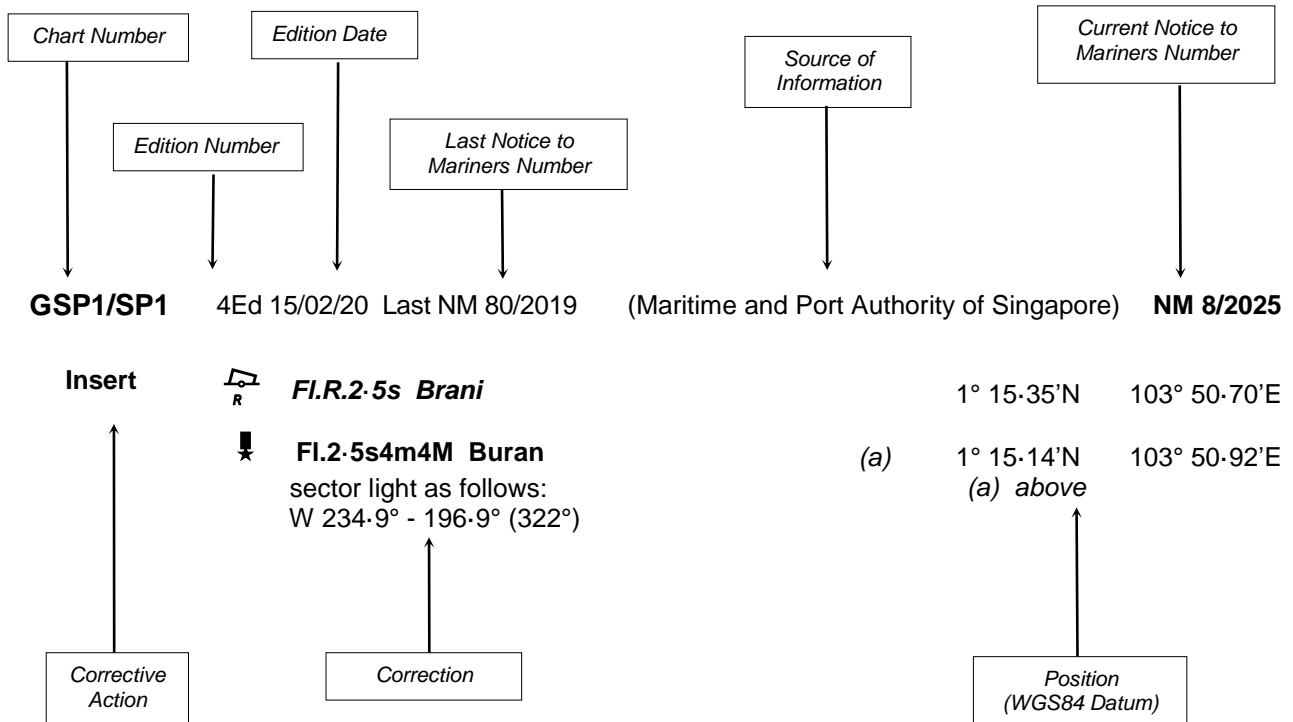
- [Singaporean Notice to Mariners](#)
- [Singaporean Charts](#)
- [Dual-Badged Charts](#)
- [Singapore ENC](#)
- [Malacca and Singapore Straits ENC](#)
- [Singapore Port Information](#)
- [Singapore Tide Tables](#)

Contact information:

Hydrographic Division
Maritime and Port Authority of Singapore
7B Keppel Road
#20-00 Tanjong Pagar Complex
Singapore 089055
Tel : 1800 272 7777 / (65) 6272 7777
Email : hydrographic@mpa.gov.sg

EXPLANATION OF FORMAT

The elements of a typical chart correction are explained below.



Notes:

- Notice to Mariners number followed by:
 - T** indicates a Temporary Notice (eg. **NM 9T/2025**).
 - P** indicates a Preliminary Notice (eg. **NM 10P/2025**).
- Bearings are true reckoned clockwise from 000° to 359°; those relating to lights are from seaward.
- Heights and elevations are above Mean High Water Springs.
- # indicates where amendments are made.
- * indicates source from Maritime and Port Authority of Singapore.

I
AFFECTED CHARTS AND PUBLICATIONS

INDEX OF NOTICES

NOTICE NO.	DESCRIPTION	PAGE NO.
-	New Charts and Publications	2 – 7
*66, *67, *68	Singaporean Chart GSP1/SP1	8
69, 70	Singaporean Chart 201	8
69, 70, 71	Singaporean Chart 202	8
69, 70, 72	Singaporean Chart 500	8
*66	Singaporean Chart 502	9
*73T, 74P	Temporary and Preliminary Notices	10
-	Cancelled Temporary and Preliminary Notices	11
*75	Singapore Port Marine Notices/Circulars	12
*76	Amendments to Publications	13
-	Reprint of Maritime Safety Information	14 – 15
-	Extract of Admiralty Notices to Mariners for Dual-Badged Charts	16 – 19

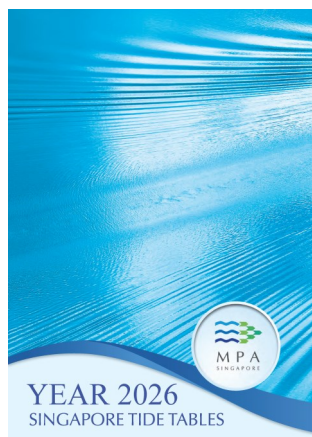
*Source: Maritime and Port Authority of Singapore

II NEW CHARTS AND PUBLICATIONS

SINGAPORE TIDE TABLES YEAR 2026 TO BE PUBLISHED ON 1ST SEPTEMBER 2025

Summary of Publication

This publication contains Tidal Height and Tidal Stream Predictions covering stations in Singapore Port Waters and along the Straits of Malacca and Singapore.



1. High and Low Water Predictions at the following stations:

- a) Tanjong Pagar
- b) Sembawang

2. Hourly Tidal Height Predictions at the following stations:

- a) West Tuas
- b) Sultan Shoal Lighthouse
- c) Raffles Lighthouse
- d) West Coast
- e) Bukom
- f) Tanjong Pagar
- g) Tanah Merah
- h) Tanjong Changi
- i) Sembawang
- j) Singapore Strait - Horsburgh Lighthouse

3. Hourly Tidal Stream Predictions at the following stations:

- a) Main Strait - off Tuas View
- b) Sinki Fairway - Banyan
- c) Jong Fairway - off Sisters Buoy
- d) Main Strait - off Shell SBM Buoy
- e) Sentosa - off Cruise Bay
- f) East Buran
- g) Main Strait - Eastern Petroleum A
- h) Kuala Johor - off Malang Tiga

4. Maximum and Slack Tidal Stream Predictions at the following stations:

- a) Malacca Strait - off Pulau Iyu Kecil Light
- b) Singapore Strait - Selat Phillip
- c) Singapore Strait - Karang Banteng (Buffalo Rock)
- d) Singapore Strait - Horsburgh Lighthouse

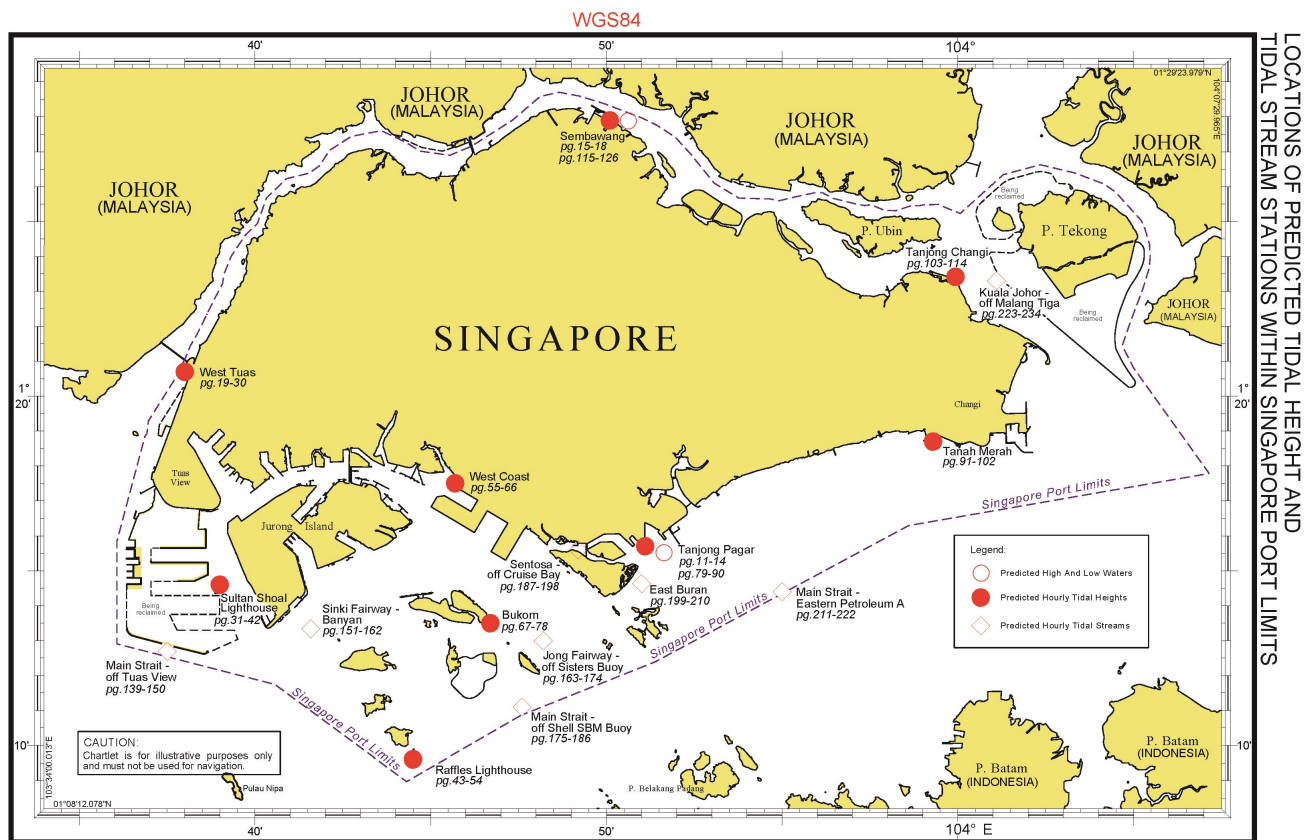
5. Malacca Strait - High and Low Water Predictions at the following stations:

- a) Kedah Pier, Pulau Pinang
- b) Port Dickson
- c) Kuala Batu Pahat

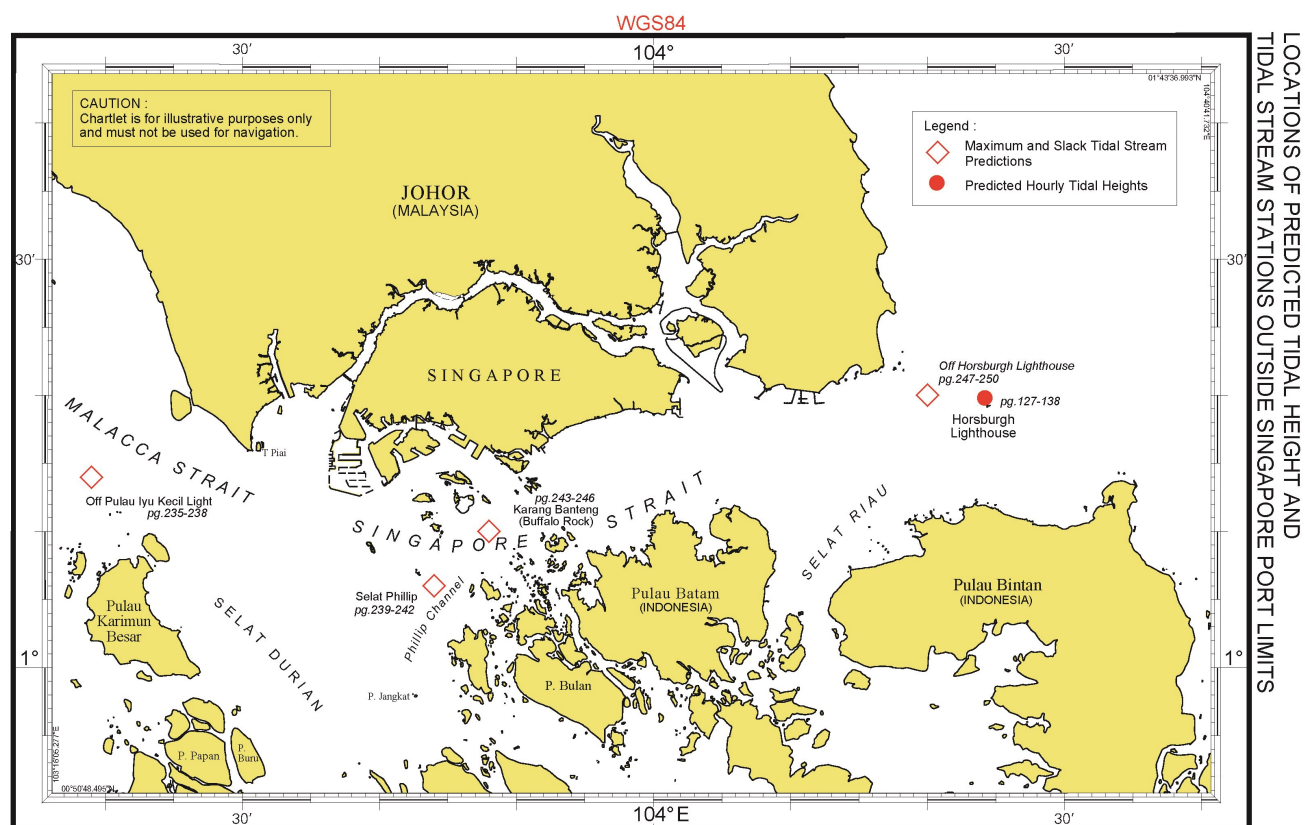
The locations of the above stations are shown in the chartlets below:

II NEW CHARTS AND PUBLICATIONS

Tidal Prediction Stations within Singapore Port Waters



Tidal Prediction Stations within Straits of Malacca and Singapore

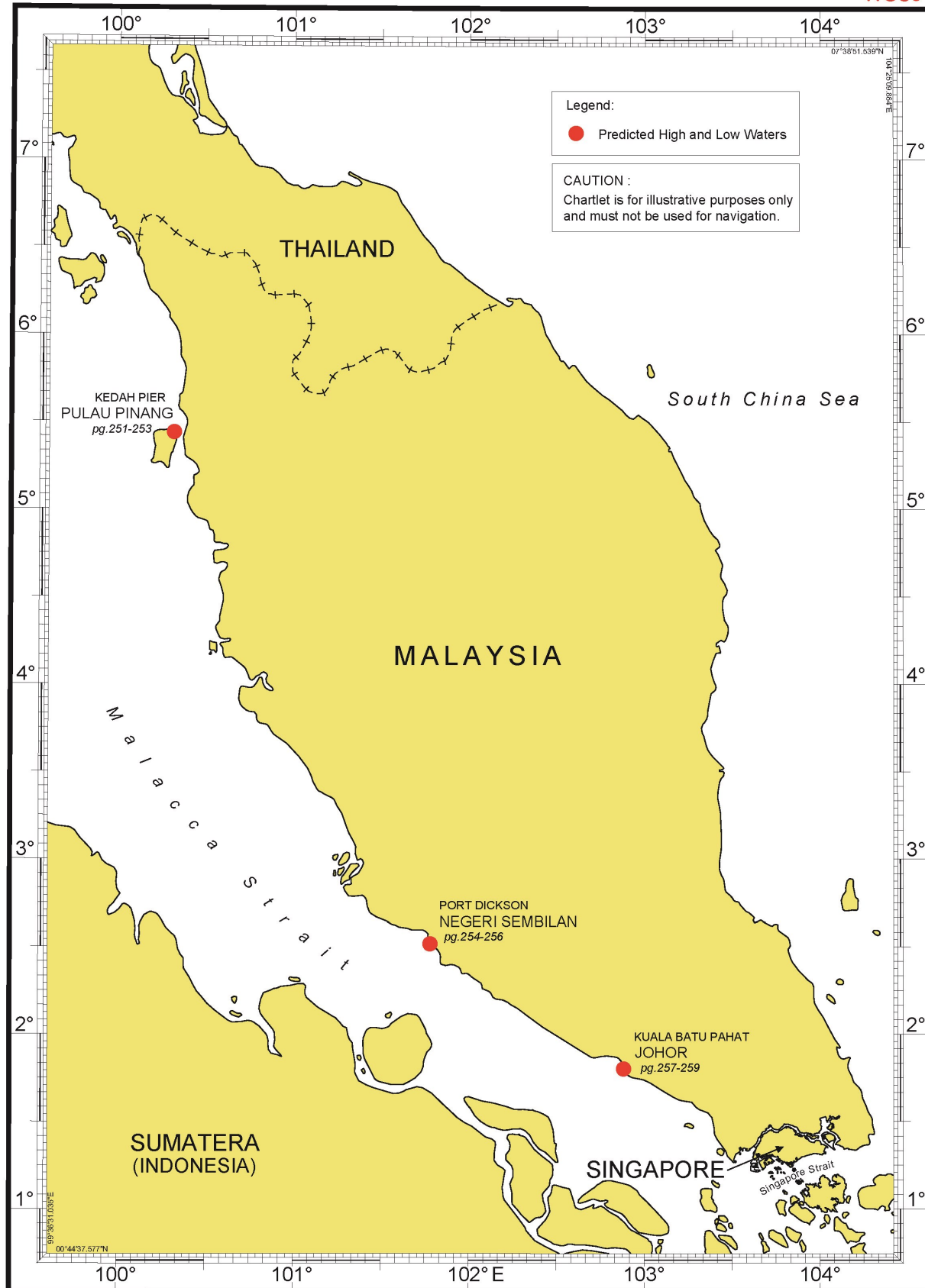


II NEW CHARTS AND PUBLICATIONS

Tidal Prediction Stations In Malacca Strait

LOCATIONS OF PREDICTED TIDAL HEIGHT STATIONS
ALONG THE MALACCA STRAIT

WGS84



II NEW CHARTS AND PUBLICATIONS

NEW EDITION DUAL BADGED CHARTS TO BE PUBLISHED ON 14th AUGUST 2025

Chart Number : 4030

Title : West Jurong Anchorages and Temasek Fairway

Coverage : Lat 01°11·05'N 01°17·00'N
Long 103°36·70'E 103°40·70'E

Compilation Scale : 1 : 10 000

Date to be Published : 14th August 2025

Size of Chart : 742.0 x 1096.5 mm

Description : This new edition includes updated surveys, changes to topography and aids to navigation.

The existing chart of the same number published on 29th Sept 2022 will be superseded.

Chart Number : 4031

Title : Western Approaches to Jurong Island

Coverage : Lat 01°10·15'N 01°16·12'N
Long 103°38·50'E 103°42·53'E

Compilation Scale : 1 : 10 000

Date to be Published : 14th August 2025

Size of Chart : 747.6 x 1100.2 mm

Description : This new edition includes updated surveys, changes to topography and aids to navigation.

The existing chart of the same number published on 29th Oct 2020 will be superseded.

Chart Number : 4033

Title : Tuas Bay, West Jurong Channel and Pesek Basin

Coverage : Lat 01°15·00'N 01°19·05'N
Long 103°36·80'E 103°42·70'E

Compilation Scale : 1 : 10 000

Date to be Published : 14th August 2025

Size of Chart : 1094.4 x 746.4 mm

Description : This new edition includes updated surveys, changes to topography and aids to navigation.

The existing chart of the same number published on 8th Oct 2020 will be superseded.

II NEW CHARTS AND PUBLICATIONS

NEW EDITION SINGAPORE ENC TO BE RELEASED ON 14th AUGUST 2025

ENC Cell : SG5C4030

Location : West Jurong Anchorages and Temasek Fairway

Coverage : Lat 01°11·05'N 01°16·30'N
Long 103°36·70'E 103°40·64'E

Compilation Scale : 1 : 8 000

Date to be Released : 14th August 2025

Description : This new edition includes updated surveys, changes to topography and aids to navigation.

The existing cell of the same number released on 29th Sept 2022 will be superseded.

ENC Cell : SG5C4031

Location : Western Approaches to Jurong Island

Coverage : Lat 01°10·15'N 01°12·25'N
Long 103°42·53'E 103°38·50'E

Compilation Scale : 1 : 8 000

Date to be Released : 14th August 2025

Description : This new edition includes updated surveys, changes to topography and aids to navigation.

The existing cell of the same number released on 20th Aug 2021 will be superseded.

II NEW CHARTS AND PUBLICATIONS

NEW EDITION SINGAPORE ENC TO BE RELEASED ON 14th AUGUST 2025

ENC Cell : SG5C4032

Location : Sinki Fairway

Coverage : Lat 01°12'25"N 01°16'30"N
Long 103°40'64'E 103°42'58'E

Compilation Scale : 1 : 8 000

Date to be Released : 14th August 2025

Description : This new edition includes updated surveys, changes to topography and aids to navigation.

The existing cell of the same number released on 29th Sept 2022 will be superseded.

ENC Cell : SG5C4033

Location : Tuas Bay, West Jurong Channel and Pesek Basin

Coverage : Lat 01°19'05"N 01°16'30"N
Long 103°42'70'E 103°37'60'E

Compilation Scale : 1 : 8 000

Date to be Released : 14th August 2025

Description : This new edition includes updated surveys, changes to topography and aids to navigation.

The existing cell of the same number released on 18th Oct 2022 will be superseded.

II

NOTICES TO MARINERS AND CHART CORRECTIONS


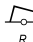
GSP1/SP1 9 Ed 15/01/25 Last NM 57/2025 (Maritime and Port Authority of Singapore) ***NM 66/2025**

Insert  *DHI-CESS-2, Fl.Y.5s* 1°19'16"N 104°03'13"E

(Maritime and Port Authority of Singapore) ***NM 67/2025**

Insert the accompanying block, centred on: 1°21'79"N 103°38'16"E

(Maritime and Port Authority of Singapore) ***NM 68/2025**

Replace  *Simpang, Fl.R.10s* with  *Simpang, Fl.R.10s* 1°27'57"N 103°51'56"E

201 6 Ed 15/09/17 Last NM 58/2025 (Pushidrosal Indonesian Notice No.28/246/2025) **NM 69/2025**

Insert depth, I_6 and extend 5m contour E to enclose 1°11'59"N 103°21'32"E

(Pushidrosal Indonesian Notice No.28/247&248/2025) **NM 70/2025**

Replace  with \times 1°11'52"N 103°20'97"E

202 8 Ed 15/09/16 Last NM 57/2025 (Pushidrosal Indonesian Notice No.28/246/2025) **NM 69/2025**

Insert depth, I_6 and extend 5m contour E to enclose 1°11'59"N 103°21'32"E

(Pushidrosal Indonesian Notice No.28/247&248/2025) **NM 70/2025**

Replace  with \times 1°11'52"N 103°20'97"E

(Pushidrosal Indonesian Notice No.28/245/2025) **NM 71/2025**

Insert depth, I_{54} enclose by 20m contour 0°40'74"N 103°38'47"E

500 8 Ed 15/09/17 Last NM 59/2025 (Pushidrosal Indonesian Notice No.28/246/2025) **NM 69/2025**

Insert depth, I_6 enclose by 2m contour (a) 1°11'59"N 103°21'32"E

Delete depth, I_{42} close S of: (a) above

(Pushidrosal Indonesian Notice No.28/247&248/2025) **NM 70/2025**

Insert \times and extend 10m contour SW to enclose (b) 1°11'52"N 103°20'97"E

Delete  close NE of: (b) above

(Pushidrosal Indonesian Notice No.28/249/2025) **NM 72/2025**

Insert depth, I_6 and extend 5m contour SW to enclose (c) 1°11'68"N 103°21'11"E

Delete depth, 2_9 close NE of: (c) above

II
NOTICES TO MARINERS AND CHART CORRECTIONS

502 9 Ed 15/10/21 Last NM 32/2025 (Maritime and Port Authority of Singapore) ***NM 66/2025**

Insert  *DHI-CESS-2, Fl.Y.5s* 1°19·16'N 104°03·13'E

*Source: Maritime and Port Authority of Singapore

II

TEMPORARY AND PRELIMINARY NOTICES

***(NM 73T/2025) : SPECIAL PURPOSE BUOY HAS BEEN ESTABLISHED OFF KUSU ISLAND**

Description : 1. The following special purpose buoy has been established:

Name of buoy	Position Lat. N Long. E	Structure, Colour & Shape	Light Characteristics
NTU-Kusu	01°13·332' 103°51·798'	Yellow pillar with 'X' topmark	Fl.Y.3s

2. Mariners are advised to navigate with caution.

Chart affected : Singaporean GSP1/SP1, Dual Badged BA4037, BA4040 and BA4041

ENC affected : SG5C4037

(NM 74P/2025) : FIBRE OPTIC CABLE DEPLOYMENT ACTIVITIES FROM BATAM TO JAKARTA

Description : 1. Cable deployment activities are carried out joining the following positions:

1°10·02'N,	104°08·32'E
1°10·00'N,	104°08·47'E
1°12·90'N,	104°09·39'E
1°12·93'N,	104°09·43'E
1°12·96'N,	104°17·35'E
1°14·35'N,	104°24·03'E
1°16·60'N,	104°28·24'E
1°17·43'N,	104°42·35'E
1°17·89'N,	104°43·24'E
1°15·88'N,	104°48·89'E

2. Mariners are advised to navigate with caution.

Chart affected : Singaporean 202, 502 and 503, Dual Badged BA4042

Source : Pushidrosal Indonesian Notice No.25/225P/2025

*Source: Maritime and Port Authority of Singapore

II

TEMPORARY AND PRELIMINARY NOTICES

Cancelled Temporary and Preliminary Notices

NIL

III NAVIGATIONAL INFORMATION

*(NM 75/2025) SINGAPORE PORT MARINE NOTICES / CIRCULARS

The Port Marine Notices/Circulars shortlisted below would be of particular interest to Mariners. Details and complete list of Port Marine Notices/Circulars are available at this link:

<http://www.mpa.gov.sg/web/portal/home/port-of-singapore/circulars-and-notices>

PMC No. Subject

- -

PMN No. Subject

83/2025	Reclamation at Pulau Sudong
85/2025	Supply and delivery of sand at Changi East Deposition Area
87/2025	Deployment and servicing of ADCP / AWAC and Hydrophone
88/2025	Reclamation and marine works at west of Tuas View
89/2025	Submarine Cable System seaward duct installation works at Changi landing point
93/2025	Soil investigation and survey works at Temasek Fairway/Finger 4
94/2025	Demolition and reinstatement of shipyard facilities in Benoi Basin

*Source: Maritime and Port Authority of Singapore

III AMENDMENTS TO PUBLICATIONS

*(NM 76/2025) UPDATING OF PUBLICATION “SINGAPORE PORT INFORMATION 2025”

The Singapore Port Information 2025 including the following updates can be accessed directly from MPA Website:

<https://www.mpa.gov.sg/who-we-are/newsroom-resources/publications/singapore-port-information>

CHARACTERISTICS OF AIDS TO NAVIGATION

1. Page 74

EAST JOHOR STRAIT

Amend the following:

Name Of Beacon / Buoy	Position Lat. N Long. E Deg Min	Structure, Colour & Shape	Light Characteristic	Owner
Simpang Buoy	01°27·573' 103°51·563'	Red can	Fl.R.10s	MPA

2. Page 75

CHANGI EAST

Insert the following:

Name Of Beacon / Buoy	Position Lat. N Long. E Deg Min	Structure, Colour & Shape	Light Characteristic	Owner
DHI-CESS-2 Buoy	01°19·164' 104°03·129'	Yellow pillar with 'X' topmark	Fl.Y.5s	DHI Water & Environment (S) Pte Ltd

*Source: Maritime and Port Authority of Singapore

IV

REPRINT OF MARITIME SAFETY INFORMATION

TT418

WEST BOUND DEEP DRAFT VESSELS AND VLCCS ARE REMINDED TO COMPLY WITH THE RULES OF VESSELS NAVIGATING THROUGH THE STRAITS OF MALACCA AND SINGAPORE (SOMS). THEY SHALL ALLOW FOR AN UKC OF AT LEAST 3.5 METRES AT ALL TIMES DURING THE ENTIRE PASSAGE THROUGH THE SOMS AND AS FAR AS IT IS SAFE AND PRACTICABLE, PROCEED AT A SPEED OF NOT MORE THAN 12 KTS OVER THE GROUND IN THE WESTBOUND LANE OF THE SINGAPORE STRAIT (BETWEEN SOUTH OF ST JOHN'S ISLAND & RAFFLES LIGHTHOUSE). THEY ARE ADVISED TO BROADCAST, 8 HOURS BEFORE ENTERING THE TSS, NAVIGATIONAL INFORMATION GIVING NAME, DEADWEIGHT, DRAUGHT, SPEED AND TIMES OF PASSING HORSBURGH LIGHTHOUSE AND RAFFLES LIGHTHOUSE.

TT961

VESSELS INTENDING TO CROSS THE TRAFFIC SEPARATION SCHEME (TSS) OR PRECAUTIONARY AREAS IN THE SINGAPORE STRAIT DURING THE HOURS OF DARKNESS ARE RECOMMENDED TO DISPLAY THE NIGHT SIGNALS CONSISTING OF 3 ALL ROUND GREEN LIGHTS IN A VERTICAL LINE AS DETAILED IN THE MARITIME AND PORT AUTHORITY OF SINGAPORE'S PORT MARINE CIRCULAR, 04 OF 2013 DATED 7 MAY 2013.

TT273

ALL VESSELS ARE ADVISED TO NAVIGATE WITH CAUTION, COMPLY WITH THE COLREGS ,MAINTAIN VHF RADIO WATCH AND LISTEN TO TRAFFIC INFORMATION WHEN NAVIGATING IN THE SINGAPORE STRAIT AND PORT WATERS. MARINERS ARE ALSO ADVISED TO KEEP A GOOD LOOKOUT OF FREQUENT FERRIES CROSSING THE SINGAPORE STRAIT.

TT175

VESSELS IN EAST JOHOR STRAIT ARE ADVISED TO NAVIGATE WITH PARTICULAR ALERTNESS AND CAUTION WHEN NEAR THE PROJECT AREAS OFF PULAU TEKONG, CHANGI AND MALANG PAPAN AS SHALLOW WATER AREAS EXIST. VESSELS ARE REMINDED TO PROCEED AT A SAFE SPEED AND MAINTAIN A PROPER LOOK-OUT, PARTICULARLY FOR TUGS AND BARGES NAVIGATING NEAR THE PROJECT AREAS AND PASSENGER FERRIES CROSSING BETWEEN CHANGI AND PULAU TEKONG AND VICINITY OF PASIR GUDANG.

TT234

VESSELS ARE ADVISED TO MAINTAIN A VIGILANT ANTI PIRACY WATCH, TAKE PREVENTIVE MEASURES AS PER BEST MANAGEMENT PRACTICE AND WHERE POSSIBLE, POST ADDITIONAL LOOKOUTS AND TURN ON REAR LIGHTING AT POOP DECK.

TT233 (Amended on 05 June 2025)

SOUTH CARDINAL (RACON D) BUOY IN POSITION LAT 01 03.592'N LONG 103 38.855'E WAS REPORTED UNLIT. ALL VESSELS PASSING IN THE VICINITY ARE ADVISED TO NAVIGATE WITH EXTRA CAUTION

TT266 (AMENDED 260155Z)

BATU BERHANTI BUOY FL(2)5S IS REPORTEDLY OUT OF POSITION. ALL VESSELS NAVIGATING IN THE VICINITY ARE ADVISED TO NAVIGATE WITH CAUTION.

TT265

THERE IS A REPORT OF AN ISO TANK REPORTEDLY FALLEN INTO THE WATER IN APPROX POSITION 01-21.38N 103-37.46E. OFF 2ND LINK TUAS. MARINERS ARE ADVISED TO KEEP CLEAR , MAINTAIN A GOOD LOOKOUT, NAVIGATE WITH CAUTION AND REPORT ANY SIGHTING TO SINGAPORE VTIS JURONG CONTROL ON VHF CH 22.

IV

REPRINT OF MARITIME SAFETY INFORMATION

TT264

SURVEY VESSEL GEOMARINE III IS CARRYING OUT SURVEY WORKS IN VTIS SECTOR 7 FROM THE SOUTHERN EDGE OF THE TSS WESTBOUND LANE AT NIPAH AREA TOWARDS THE EDGE OF THE TSS EAST BOUND LANE FROM 24 JUL 2025 TO 30 JUL 2025. TRANSITTING VESSELS ARE ADVISED TO NAVIGATE WITH CAUTION, PROCEED AT SAFE SPEED AND KEEP WELL CLEAR OF THE CABLE VESSEL.

TT201

AN ISOLATED DANGER BUOY FL(2)W.10S AT POSITION LAT 01-18.125'N LONG 103-36.945'E TO MARK A PARTIALLY SUBMERGED DREDGER KSE HITACHI GO HAS BEEN DEPLOYED. A VIRTUAL ATON WITH MMSI NO 995636004 OF THE SAME CHARACTERISTIC HAS ALSO BEEN DEPLOYED IN THE SAME POSITION. ALL VESSELS NAVIGATING IN THE VICINITY ARE ADVISED TO NAVIGATE WITH CAUTION.

TT147 (AMENDED 122200H JAN 25)

A SUNKEN VESSEL "SILVER SINCERE" HAS BEEN REPORTED AT POSITION LAT 01-17.85N LONG 104-22.82E, APPROXIMATELY 217 DEGREES AND 2.5 NM FROM HORSBURGH LIGHTHOUSE. A VIRTUAL ATON (ISOLATED DANGER MARK) WITH MMSI NUMBER 995636002 HAS BEEN ESTABLISHED AT THE SAME LOCATION TO MARK THE SUNKEN VESSEL.

TT643

THERE IS REPORT OF CONCENTRATION OF FISHING VESSELS OBSERVED IN THE EASTBOUND TRAFFIC LANE IN THE VICINITY BETWEEN BUFFALO ROCK AND BATU BERHANTI. ALL VESSELS ARE ADVISED TO PROCEED AT A SAFE SPEED, KEEP A SHARP LOOK OUT AND NAVIGATE WITH EXTREME CAUTION AT ALL TIME.

TT642

ALL MARINERS NAVIGATING THROUGH THE STRAIT OF SINGAPORE ARE REMINDED TO MAINTAIN CLOSE AND CONTINUOUS MONITORING OF VESSEL-S POSITION. IN DETERMINING RISK OF GROUNDING, DIFFERENT METHODS OF POSITION FIXING SHOULD ALSO BE USED AS MEANS OF CROSS-CHECKING.

TT426

ALL MARINERS ARE REMINDED TO NAVIGATE WITH CAUTION IN THE PRECAUTIONARY AREAS AND TSS ,MAINTAIN A GOOD LOOKOUT FOR CROSSING TRAFFIC. VESSELS INTENDING TO CROSS THE TSS SHALL DO SO ONLY WHEN IT IS SAFE AND SHALL AT ALL TIMES COMPLY WITH THE COLREGS.

TT399

VESSELS ARRIVING TO SINGAPORE OR TRANSITING THROUGH THE STRAIT ARE RECOMMENDED TO UPDATE THEIR DESTINATION ACCURATELY IN THE AIS TO ENHANCE SITUATIONAL AWARENESS FOR OTHER TRAFFIC IN THE VICINITY. EG: SG-PEBGB FOR PILOT EASTERN BOARDING GROUND BRAVO.

TT363

MARINERS ARE REMINDED NOT TO ANCHOR IN ALL AREAS IN THE TSS ,INCLUDING PRECAUTIONARY AREAS OF THE STRAITS OF MALACCA AND SINGAPORE AS WELL AS BETWEEN THE LANDWARD LIMITS OF THE TSS AND APPROACHES TO THE PORTS. VESSELS ENTERING ANY PORT IN ANY LITTORAL STATES ARE TO ANCHOR IN THE ANCHORAGES DESIGNATED BY THE RESPECTIVE LITTORAL STATES. MARINERS ARE ALSO REMINDED THAT EVERY CARE SHOULD BE TAKEN TO AVOID ANCHORING IN THE VICINITY OF SUBMARINE CABLES OR PIPELINES.

ISSUED BY SINGAPORE PORT OPERATIONS CONTROL CENTRE (as at 29th July 2025)

V

EXTRACT OF ADMIRALTY NOTICES TO MARINERS FOR DUAL BADGED CHARTS

These notices can also be accessed directly from UKHO Website:

<http://www.admiralty.co.uk/maritime-safety-information/admiralty-notices-to-mariners>

3060* SINGAPORE - Buoy.

Source: Maritime and Port Authority of Singapore

Chart 4030 [*previous update 1586/25*] WGS84 DATUM

Insert  *Fl.Y.3s DHI-TVE-ADCP* 1° 12'·810N., 103° 39'·077E.

Chart 4031 [*previous update 1586/25*] WGS84 DATUM

Insert  *Fl.Y.3s DHI-TVE-ADCP* 1° 12'·810N., 103° 39'·077E.

Chart 4038 [*previous update 2573/25*] WGS84 DATUM

Insert  *Fl.Y.3s DHI-TVE-ADCP* 1° 12'·81N., 103° 39'·08E.

Chart 4039 [*previous update 2660/25*] WGS84 DATUM


Insert  *Fl.Y.3s DHI-TVE-ADCP* 1° 12'·81N., 103° 39'·08E.

Chart 4040 [*previous update 2660/25*] WGS84 DATUM

Insert  *Fl.Y.3s DHI-TVE-ADCP* 1° 12'·81N., 103° 39'·08E.

3095* SINGAPORE - Dredged depth.

Source: Maritime and Port Authority of Singapore

Chart 4034 [*previous update 1248/25*] WGS84 DATUM

Amend dredged depth to, 0·2m (2024), centred on: 1° 18'·482N., 103° 43'·470E.

3108* SINGAPORE - Wreck.

Source: Maritime and Port Authority of Singapore

Note: Former Notice 205(T)/25 is cancelled.

Chart 4030 [*previous update 3060/25*] WGS84 DATUM

Insert  1° 16'·229N., 103° 38'·466E.

Chart 4033 [*previous update 1447/25*] WGS84 DATUM

Insert  1° 16'·229N., 103° 38'·466E.

Chart 4038 [*previous update 3060/25*] WGS84 DATUM

Insert wreck out of position,  1° 16'·23N., 103° 38'·47E.

Chart 4040 [*previous update 3060/25*] WGS84 DATUM

Insert wreck out of position,  1° 16'·23N., 103° 38'·47E.

V

EXTRACT OF ADMIRALTY NOTICES TO MARINERS FOR DUAL BADGED CHARTS

These notices can also be accessed directly from UKHO Website:

<http://www.admiralty.co.uk/maritime-safety-information/admiralty-notices-to-mariners>

3110* SINGAPORE - Buoy.

Source: Maritime and Port Authority of Singapore

Chart 4043 [*previous update New Edition 05/06/2025*] WGS84 DATUM

Insert  *Fl.Y.5s MESN-UBN* 1° 24'·74N., 104° 00'·00E.

Chart 4044 [*previous update 1555/25*] WGS84 DATUM

Insert  *Fl.Y.5s MESN-UBN* 1° 24'·74N., 104° 00'·00E.

3117* SINGAPORE - Dredged depth.

Source: Maritime and Port Authority of Singapore

Chart 4031 [*previous update 3060/25*] WGS84 DATUM

Amend dredged depth to, *14·1m (2024)*, centred on: 1° 15'·111N., 103° 42'·104E.

Chart 4032 [*previous update 1524/25*] WGS84 DATUM

Amend dredged depth to, *14·1m (2024)*, centred on: 1° 15'·111N., 103° 42'·104E.

3080(P)/25 SINGAPORE - Alongside depths. Berths.

Source: Maritime and Port Authority of Singapore

1. Least alongside depths have changed for the following berths:

<i>Berth</i>	<i>Alongside Depth (Year Surveyed)</i>	<i>Position</i>
OS3	10·1m (2025)	1° 13'·880N., 103° 46'·496E.
OS4	11·0m (2025)	1° 13'·975N., 103° 46'·401E.
OS9	12·7m (2025)	1° 14'·392N., 103° 45'·917E.
OS10	15·3m (2025)	1° 13'·676N., 103° 46'·691E.
OS10B	5·2m (2025)	1° 13'·675N., 103° 46'·647E.
OS11	5·3m (2025)	1° 14'·290N., 103° 45'·570E.

2. Mariners are advised to navigate with caution in the area.
(WGS84 DATUM)

Charts affected - 4032 - 4035

3166* SINGAPORE - Buoyage.

Source: Maritime and Port Authority of Singapore

Chart 4030 [*previous update 3108/25*] WGS84 DATUM

Insert  *Fl(4)Y.10s TVE 1* 1° 12'·565N., 103° 38'·627E.

Delete  *VQ(3)5s TVE 1* 1° 12'·508N., 103° 38'·867E.

V

EXTRACT OF ADMIRALTY NOTICES TO MARINERS FOR DUAL BADGED CHARTS


These notices can also be accessed directly from UKHO Website:

<http://www.admiralty.co.uk/maritime-safety-information/admiralty-notices-to-mariners>

3166* SINGAPORE - Buoyage. (continued)

Source: Maritime and Port Authority of Singapore

Chart 4031 [previous update 3117/25] WGS84 DATUM

Insert  FI(4)Y.10s TVE 1 1° 12'·565N., 103° 38'·627E.

Delete  VQ(3)5s TVE 1 1° 12'·508N., 103° 38'·867E.

Chart 4038 [previous update 3108/25] WGS84 DATUM

Insert  FI(4)Y.10s TVE 1 1° 12'·57N., 103° 38'·63E.

Delete  VQ(3)5s TVE 1 1° 12'·51N., 103° 38'·87E.

Chart 4039 [previous update 3060/25] WGS84 DATUM

Insert  FI(4)Y.10s TVE 1 1° 12'·57N., 103° 38'·63E.

Delete  VQ(3)5s TVE 1 1° 12'·51N., 103° 38'·87E.

Chart 4040 [previous update 3108/25] WGS84 DATUM

Insert  FI(4)Y.10s TVE 1 1° 12'·57N., 103° 38'·63E.

Delete  VQ(3)5s TVE 1 1° 12'·51N., 103° 38'·87E.

3192* SINGAPORE - Buoy.

Source: Maritime and Port Authority of Singapore

Chart 4030 [previous update 3166/25] WGS84 DATUM

Insert  Fl.Y.4s F4-POC-02 1° 13'·297N., 103° 39'·414E.

Chart 4031 [previous update 3166/25] WGS84 DATUM

Insert  Fl.Y.4s F4-POC-02 1° 13'·297N., 103° 39'·414E.

Chart 4038 [previous update 3166/25] WGS84 DATUM

Insert  Fl.Y.4s F4-POC-02 1° 13'·30N., 103° 39'·41E.

Chart 4039 [previous update 3166/25] WGS84 DATUM

Insert  Fl.Y.4s F4-POC-02 1° 13'·30N., 103° 39'·41E.

Chart 4040 [previous update 3166/25] WGS84 DATUM

Insert  Fl.Y.4s F4-POC-02 1° 13'·30N., 103° 39'·41E.

V

EXTRACT OF ADMIRALTY NOTICES TO MARINERS FOR DUAL BADGED CHARTS

These notices can also be accessed directly from UKHO Website:

<http://www.admiralty.co.uk/maritime-safety-information/admiralty-notices-to-mariners>

3273* SINGAPORE - Depths.

Source: Maritime and Port Authority of Singapore

Note: This update is included in New Editions 4030 and 4031, to be published 14 August 2025.

Chart 4038 [*previous update 3192/25*] WGS84 DATUM

Replace	depth, 164 , with depth, 163	1° 13'·93N., 103° 40'·06E.
---------	------------------------------	----------------------------

Chart 4040 [*previous update 3192/25*] WGS84 DATUM

Replace	depth, 164 , with depth, 163	1° 13'·93N., 103° 40'·06E.
---------	------------------------------	----------------------------

HYDROGRAPHIC NOTE - Instructions

1. Mariners are requested to notify the Chief Hydrographer, Maritime and Port Authority of Singapore, when new or suspected dangers to navigation are discovered, changes are observed in aids to navigation or where corrections to nautical publications may be necessary. Reports, which cannot be confirmed or are lacking in certain details, should not be withheld.
2. Any ambiguities of time, positioning and depth should be stressed and any firm expectation of being able to check the information provided on a following voyage should be mentioned.
3. Mariners using satellite position fixing systems, eg. GPS, should provide details of equipment and datum used (where applicable). Where bearings (true or magnetic) are taken visually or by radar to fix a position, it should include more than two objects in order to provide a check on its accuracy. A position may also be defined by bearing and distance from a conspicuous object eg. beacon, lighthouse etc.
4. The note should include a tracing or a digital image of the chart used and the details should be clearly marked.
5. Echo sounders frequently register greater depths than the advertised maximum depth for the equipment, eg. a trace appearing at 50 metres may be in fact be 550 metres or even 1050 metres for equipment whose maximum depth is 500 metres. Erroneous depths caused by 2nd transmission error can usually be recognised by the following:
 - (a) the tracing being weaker than normal for the depth registered,
 - (b) the trace appearing to pass through the transmission line,
 - (c) the feathery nature of the trace.
6. Upon receipt of a hydrographic note, a Notice to Mariners may be issued. The sender's vessel or name is quoted as the source unless the same information is also received in foreign Notices to Mariners.
7. Reports of shoals, uncharted dangers and defects in aids to navigation may also be made to the appropriate Singapore Port Operations Control Centre on VHF Channels 10, 12, 14, 68 or 73.

HYDROGRAPHIC NOTE

To:
Chief Hydrographer
Maritime and Port Authority of Singapore
7B Keppel Road #20-00 Tanjong Pagar Complex
Singapore 089055

Tel : 1800 272 7777 / (65) 6272 7777
Email : hydrographic@mpa.gov.sg

Sender's Contact Details :

Date :
Name of Vessel :
Address of Sender :
Tel :
Email :

Nature of Observation :

General Location :
Subject :
Position : Lat. Long.
Charts Used :
Date & Time of Observation :
Details :
.....
.....
Attachment :

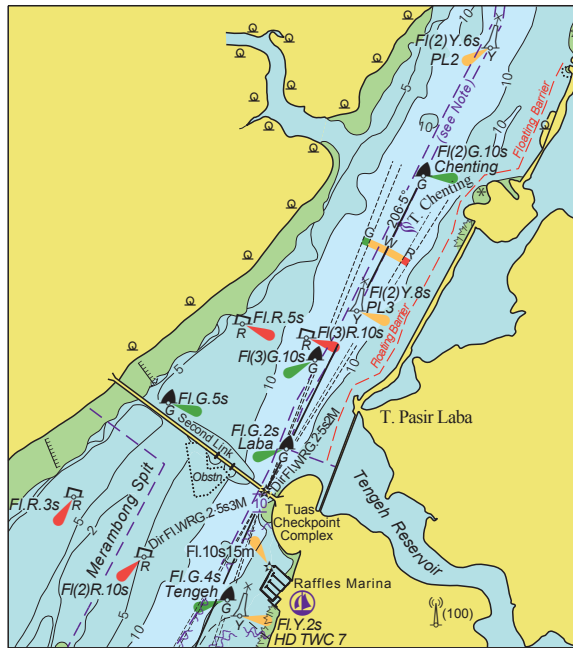
Equipment Used :

Type of Position Fixing : GPS/DGPS Others :
Type of Echo Sounder :

Name and Signature :

Ship's/Company's Stamp :

To accompany Notice to Mariners. Image Size (mm) 75.8 x 84.9

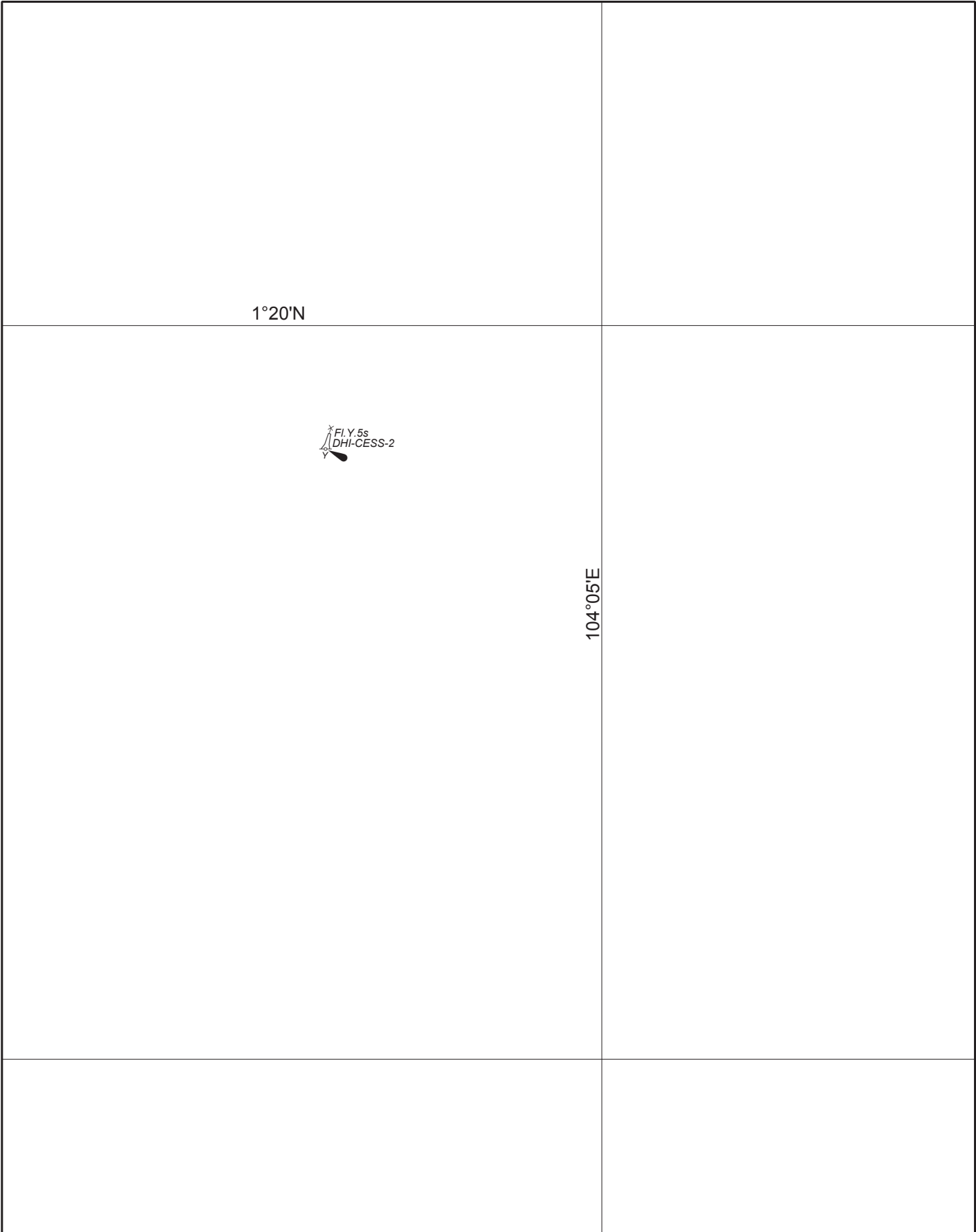


Block for Chart SP1

To accompany Notice to Mariners. Image Size (mm) 75.8 x 84.9

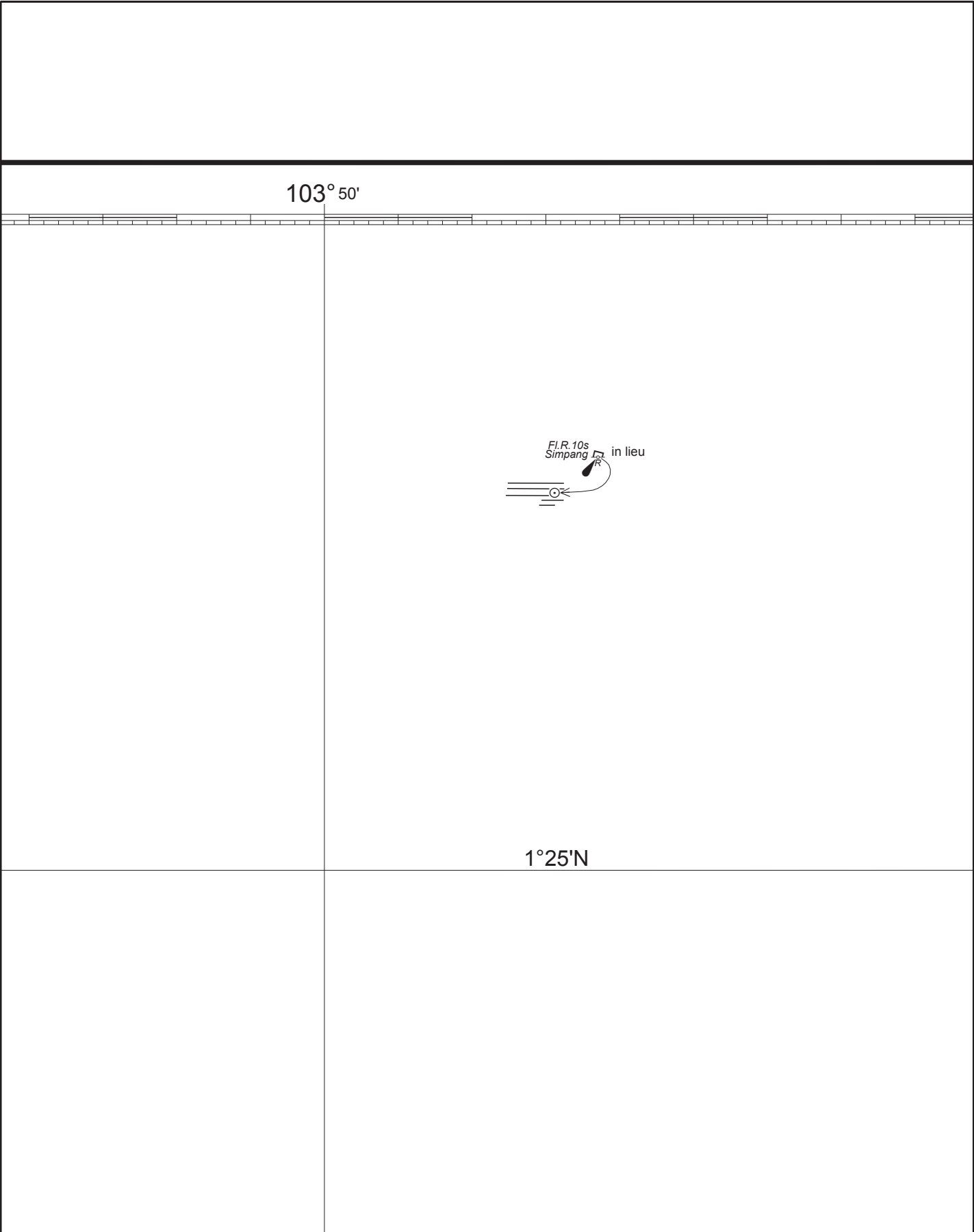


Block for Chart GSP1



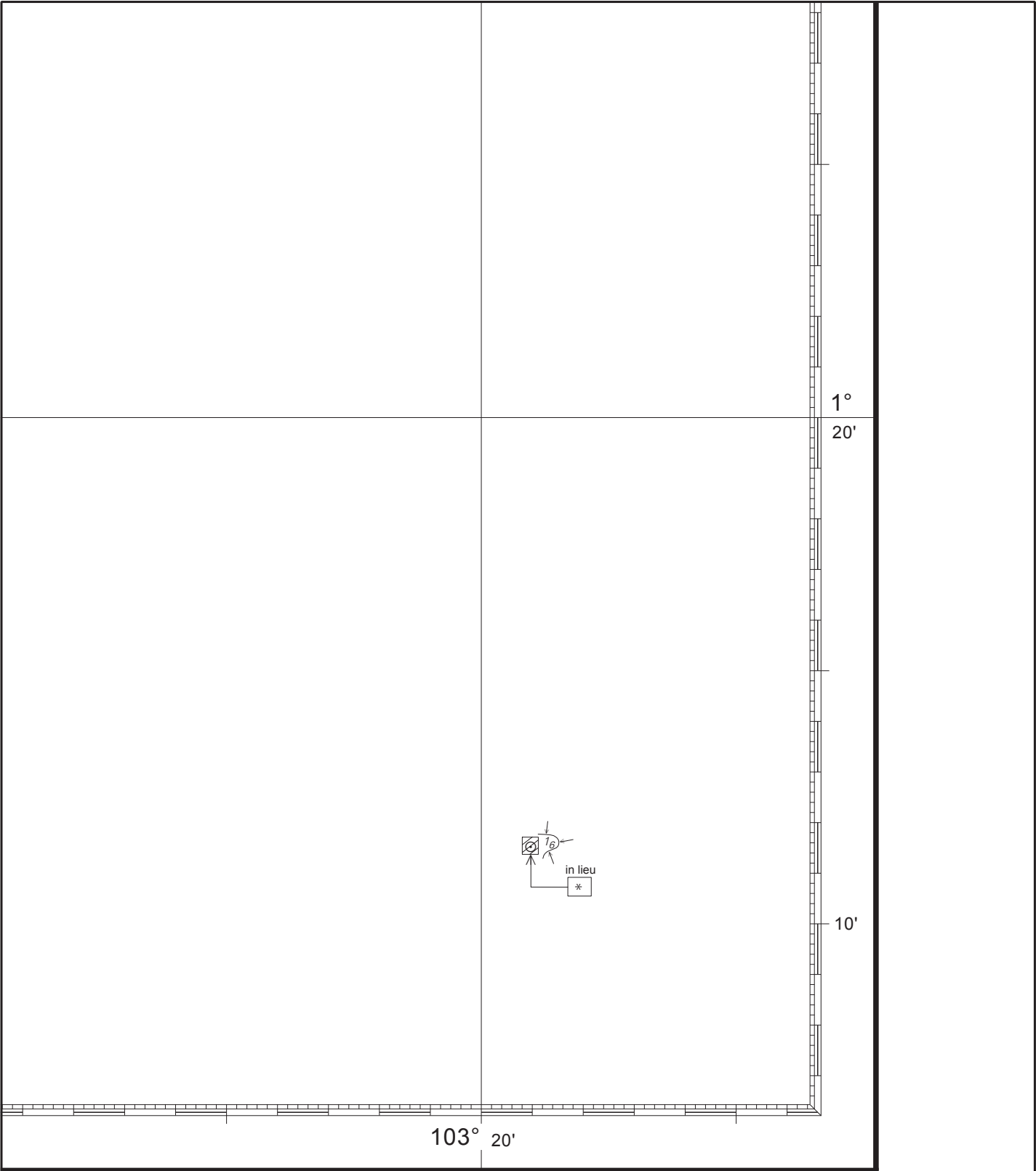
CORRECTION NO.	SNM EDN NO.	LAST CORR N NO.	CHART NO.	Location on Chart		
66	08	57	GSP1/SP1			X

Caution : some computer printers might distort the tracings.
Users are advised to check and, if necessary, adjust settings on the printer



CORRECTION NO.	SNM EDN NO.	LAST CORR N NO.	CHART NO.	Location on Chart		
					X	
68	08	67	GSP1/SP1			

Caution : some computer printers might distort the tracings.
Users are advised to check and, if necessary, adjust settings on the printer



WGS84

(960·0 x 650·0mm)

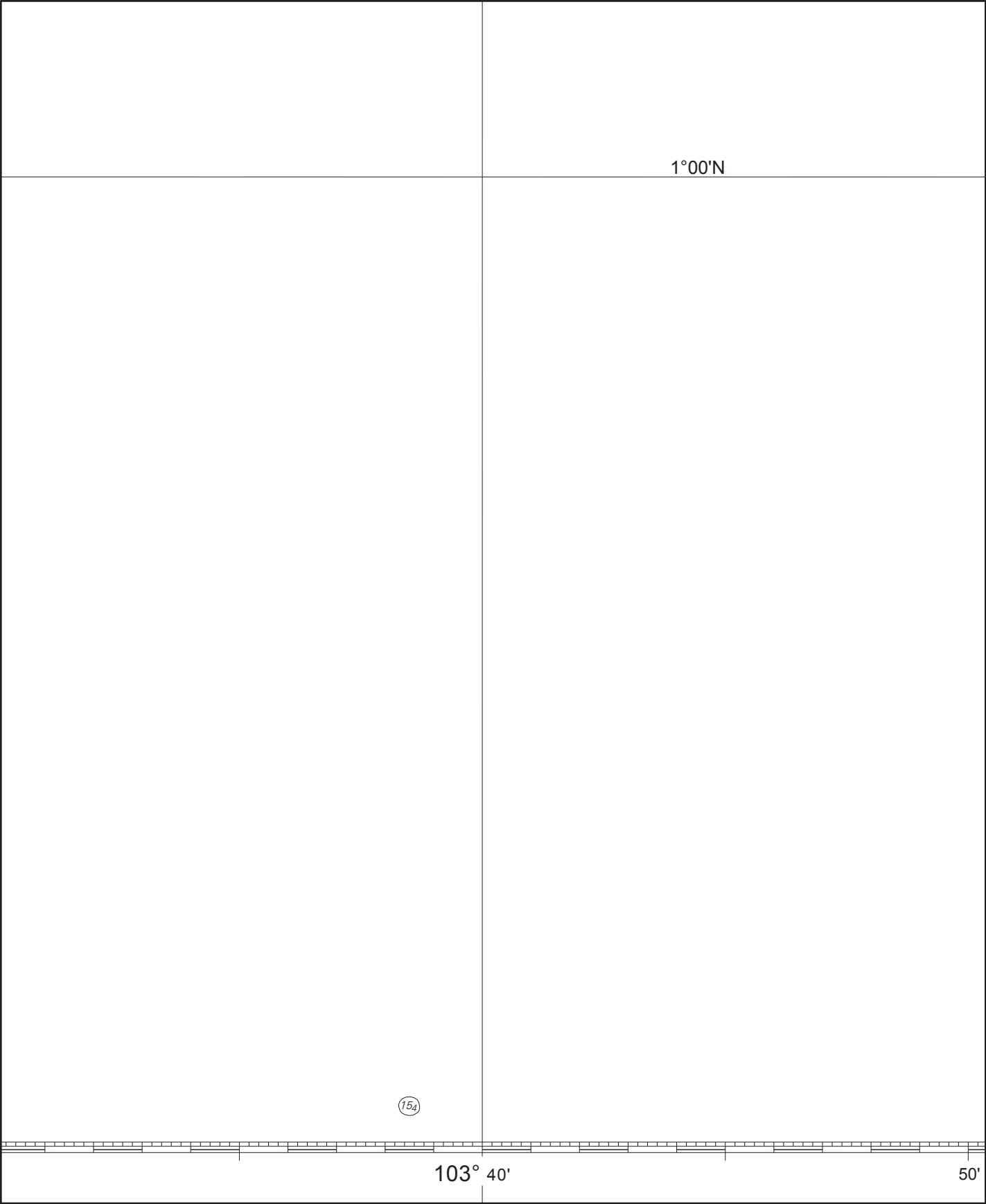
201

CORRECTION NO.	SNM EDN NO.	LAST CORR N NO.	CHART NO.	Location on Chart		
69 & 70	08	58	201			X

Caution : some computer printers might distort the tracings.
Users are advised to check and, if necessary, adjust settings on the printer

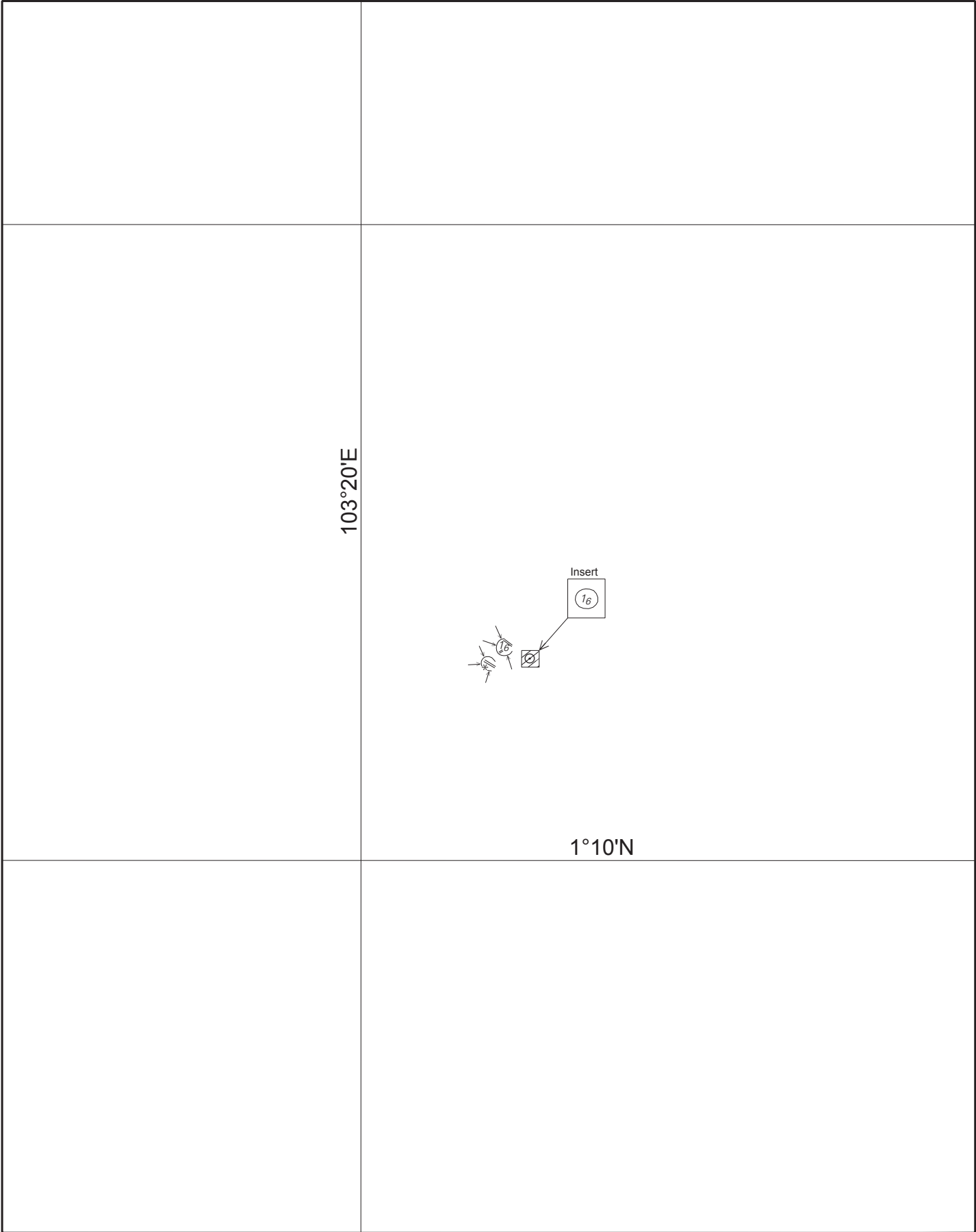
		<div> <div> <div></div> <div> <div></div> <div>6</div> </div> </div> <div>in lieu</div> <div>*</div> </div>		
		<div> <div>103°20'E</div> <div>1°00'N</div> </div>		
CORRECTION NO.	SNM EDN NO.	LAST CORR N NO.	CHART NO.	Location on Chart
69 & 70	08	58	202	<div>X</div>

Caution : some computer printers might distort the tracings.
 Users are advised to check and, if necessary, adjust settings on the printer



CORRECTION NO.	SNM EDN NO.	LAST CORR N NO.	CHART NO.	Location on Chart
71	08	70	202	X

Caution : some computer printers might distort the tracings.
Users are advised to check and, if necessary, adjust settings on the printer



CORRECTION NO.	SNM EDN NO.	LAST CORR N NO.	CHART NO.	Location on Chart		
69, 70 & 72	08	59	500		X	

Caution : some computer printers might distort the tracings.
Users are advised to check and, if necessary, adjust settings on the printer

1°20'N

FI.Y.5s
DHI-CESS-2

104°00'E

CORRECTION NO.	SNM EDN NO.	LAST CORR NO.	CHART NO.	Location on Chart		
					X	
66	08	32	502			

Caution : some computer printers might distort the tracings.
Users are advised to check and, if necessary, adjust settings on the printer